

# South Plainfield OBSERVER

C026\*\*\*\*CR LOT0025A\*\*C026 17 1  
SP PUBLIC LIBRARY  
2484 PLAINFIELD AVE  
S PLAINFIELD, NJ 07080-3531

VOL. 15, NO. 28

Member New Jersey Press Association

60 CENTS

MARCH 16, 2012

## Showcase to Feature Local Talent

Come out and support South Plainfield's local talent at the South Plainfield Cultural Arts Commission fourth annual Talent Showcase on Sunday, March 25 at 2:30 p.m. in Fellowship Hall at Wesley Methodist Church, 1500 Plainfield Ave.

SOUTH PLAINFIELD  
Cultural Arts Commission

There will be an assortment of singers, dancers and musicians performing this year. Admission is free.

## BOE Welcomes New Superintendent



Dr. Stephen Genco

By Jane Dornick

The South Plainfield Board of Education appointed Dr. Stephen Genco superintendent of schools at a special meeting on March 5. Dr. Genco replaces Dr. Gary R. Bowen, who has served as interim superintendent since October 2010.

Genco received a bachelor of science degree in 1987 from West Virginia University and majored in applied sciences. He began his educational career as a science teacher in Wall Township, which included advanced placement and honors chemistry and physics classes. He served in various extra-curricular positions as a head coach and assistant coach for the wrestling, softball and football programs, and was inducted into the Region Six Wrestling Hall of Fame in 2011 for reestablishing the Wall wrestling program.

From 2001-2008, Genco was the principal at both Wall Township High School and Wall Township Intermediate School. In those roles he facilitated the Middle States Accreditation process for the high school and was closely involved in budget planning and developed a waiver program for honors placement which allowed more students to have access to advanced coursework. He also served as assistant principal at Point Pleasant Borough High School from 2000-2001.

Since 2008, Genco served as assistant superintendent for the Jackson Township School District where he utilized his curricular expertise in mathematics and science. During his tenure, Genco directly administered the Human Resources Department, including negotiations, litigation and K-12 professional development while also managing student discipline matters and policies of the district.

He earned a master of arts, education/counseling in 1992 and a master of arts, administration in 2000 from Georgian Court University. Most recently, in 2010, he earned a doctoral degree in educational leadership from Rowan University.

"It is an honor to have been selected for this position. I am eager to learn more about the community of South Plainfield and look forward to developing strong relationships with the faculty, staff, students and larger community," commented Genco. He went on to say, "Through the interview process, it became evident that the Board of Education cares deeply about creating educational opportunities for all students. I believe that the doors open and close every day for our children and they should always be the first ones considered when making decisions. Moreover, it has always been my belief that one of the most important characteristics of an educational leader is to be open to all viewpoints and develop a collective vision for the future. I am confident that we will work together as a team to achieve our goals on behalf of the students we serve."

Bowen replaced former superintendent Jose Negron, who was put on paid administrative leave in September 2010 when his contract was not renewed.

Genco resides in Point Pleasant with his wife, Susan, who is currently superintendent of schools in Cranbury. He is expected to begin his new position on Monday, April 16.



South Plainfield High School Model UN Club delegation in Boston.

## Model UN Takes Students to Boston

By Payal Sindha

The South Plainfield High School Model United Nations (SPMUN) Club embarked on a trip to Massachusetts on February 24 to attend the eleventh annual Boston Invitational Model United Nations Conference hosted by the Boston University International Affairs Association. After months of preparation and research,

the students engaged in over 15 hours of debate with over 1,200 other delegates from all over the world for a weekend of debate and diplomacy. With debate topics ranging from sustainable development and empowerment of women to cyber terrorism and drone systems, the SPMUN Club gained insight on global politics and gained experience on how to be a delegate in the United Nations.

The SPMUN Club that went to Boston included 12 students: Tanya Joshi, Payal Sindha, Albert Vill, Shivani Patel, Christine Geczy, Michael Grzenda, Rajath Kenath, Brian Nguyen, Devang Patel, Zach Goldberg, Kevin Belanger and Chris McNeil; and advisors (history teachers) Miten Shah and Francis Flannery.

After the debate, the students were rewarded with a concert featuring Boston University's a capella group and a social dance for the hard work the students put into the conference. The SPMUN Club also had the chance to stroll in the Boston Common and Public Garden, a beautiful public park located near their hotel. There, they followed the Freedom Trail, a 2.5 mile brick trail that leads walkers to over 16 historical sites in Boston. The members also visited one of the oldest and most prestigious libraries in America, the Cambridge Library, and took a walk through Harvard University's beautiful campus.

Before returning to South Plainfield, the members were rewarded for their hard work and effort throughout the weekend. While all of the students did an exceptional job, a special congratulation goes out to Albert Vill and Zach Goldberg, who received the Best Delegate award; Chris McNeil, who was presented with an Honorable Delegate award; and Payal Sindha and Kevin Belanger, who received a Verbal Accommodation award.

When asked about the experience they gained at the conference, the students struggled to find words that would accurately describe their weekend. SPHS senior and first time Model UN delegate Tanya Joshi stated, "I've always competed in sports, but never in such a prestigious academic competition. Boston Model UN showed me what I am truly capable of doing."

Payal Sindha, also a senior at SPHS, (Continued on page 9)



Call for Entries: Women's History Month Essay Contest

### "Women's Education-Women's Empowerment"

The Women's Committee, for its third straight year, is sponsoring three events promoting Women's History Month in South Plainfield. Women's History Month is a celebration of women's contributions to history, culture and society. The theme of Women's History Month, "Women's Education-Women's Empowerment," is very fitting following the release of a progress report from the

(Continued on page 9)



South Plainfield Girl Scouts marked the 100th anniversary of Girl Scouting with a day-long celebration last Sunday. See next week's issue for full story.



8 04879 18848 3



## Want to stay informed about the business of your Council and BOE?

**FYI****Borough Council & BOE**

Council meetings air on Comcast Channel 96 Mondays at 7 p.m. BOE meetings air on Thursdays at 7 p.m.

To purchase a complete copy of a council or BOE meeting, contact the Observer. (Check Comcast community bulletin board for last minute time changes.)

**council meetings****Meets twice a month on Mondays, \*except where noted.****Borough Hall Council Chambers • Questions? 908-226-7605****Agenda Meeting**

March 19

**Public Meeting**

March 19

All Agenda Meetings begin at 7 p.m. followed immediately by the Public Meeting, unless otherwise noted. Meetings of the Governing Body are held in accordance with the N.J. Open Public Meetings Act (N.J.S.A. 10:4-6 et seq.) in the Council Chambers at 2480 Plainfield Ave.

**planning board****Meets second and fourth Tuesday of the month, \*except where noted.****Borough Hall Council Chambers, 7 p.m. Questions? 908-226-7641**

March 27, April 10, April 24, May 8, May 22, June 12, June 26, July 10, July 23\*, Aug. 14, Aug. 28, Sept. 11, Sept. 25, Oct. 9, Oct. 23, Nov. 13, Nov. 27, Dec. 11

**zoning board of adjustment****Meets first and third Tuesdays of the month, \*except where noted.****Borough Hall Council Chambers, 7 p.m. Questions? 908-226-7641**

March 20, April 3, April 17, May 1, May 15, June 5, June 19, July 3, July 17, Aug. 7, Aug. 21, Sept. 18, Oct. 2, Oct. 16, Nov. 20, Dec. 4, Dec. 18

**board of education****Meets Wednesdays at Roosevelt Administration Gymnasium on Jackson Ave.****Committee of the Whole meetings (begin at 6:00 p.m.) April 4.****Regular Public Meeting (begin at 7:30 p.m.) except where noted\* March 21, April 11****BOE curriculum/technology/student activities****Meets once a month at 4:30 p.m. in 2nd floor conference room,****Roosevelt Administration Building on Jackson Ave.****BOE buildings & grounds****Meets second Monday of the month at 7 p.m., 2nd floor conference room,****Roosevelt Administration Building****cultural arts commission****Meets the third Tuesday of the month at the PAL at 7:30 p.m.**

March 20, April 17, May 15, June 19, July &amp; Aug.-No Meeting, Sept. 18, Oct. 16, Nov. 20, Dec. 18

**library board of trustees****Meets once a month on the second Tuesday, at the library at 7 p.m.**

April 10, May 8, June 12, July 10, Aug. 14, Sept. 11, Oct. 9, Nov. 13, Dec. 11

**recreation commission****Meets once a month on the second Tuesday of the month, except July and August****PAL Building, Maple Ave. 7 p.m. Questions? 908-226-7716**

April 10, May 8, June 12, Sept. 11, Oct. 9, Nov. 13, Dec. 11

**taxpayers advisory group****The Taxpayers Advisory Group (TAG) meets the fourth Tuesday of every month at****Borough Hall, 2480 Plainfield Ave. at 7 p.m. Questions? 908-769-0786.****site plans sub-committee****Meets once a month on the third Tuesday of the month, 7 p.m.**

March 21, April 18, May 16, June 20, July 18, Aug. 15, Sept. 19, Oct. 17, Nov. 21, Dec. 19

**environmental commission****Meets once a month (second Wednesday) Borough Hall Conference Room, 8 p.m.****Questions? 908-226-7621**

April 11, May 9, June 13, July 11, Aug. 8, Sept. 12, Oct. 10, Nov. 14, Dec. 12, Jan. 9

**business advisory group****Meets once a month (first Wednesday) Borough Hall Council Chambers, 6:30 p.m.****(No meetings July and August)****ad hoc alternative truck route committee****To be announced. 7:30 p.m. in the Senior Center Questions? 908-226-7605****South Plainfield OBSERVER**

The South Plainfield Observer is published weekly on Fridays by G&amp;G Graphics Inc.

How to Reach Us



1110 Hamilton Boulevard, Suite 1B, South Plainfield, NJ 07080

Ph: 908-668-0010 • Fax: 908-668-8819

Email: spobsobserver@comcast.net

www.spobsobserver.com

**EDITORIAL**

908-668-0010

**CIRCULATION**

To subscribe to the Observer, call (908) 668-0010

**ADVERTISING**

Display (908) 668-0010

Classified (908) 668-1258

Publisher/Editor-in-Chief ..... Nancy Grennier  
 Associate Publisher ..... Wayne Grennier  
 Art Director/Associate Editor ..... Susan Kaneps  
 Staff Writer/Photographer ..... Patricia Abbott  
 Staff Writer ..... Libby Barksy  
 Contributing Writer ..... Brian Erhardt

Editorial Assistants... Jane Dornick, Jean Fultz  
 Production Assistants.....Barbara Smith,  
 Kelly Stashko, Payal Sindha  
 Contributing Photographers.....Louis Mormile  
 Advertising Sales.....Jane Dornick, Jean Fultz  
 Roxanne Cortese

The South Plainfield Observer (U.S.P.S. 018253) is published weekly, except Thanksgiving week. Second class postage paid at South Plainfield, New Jersey 07080-9998. Postmaster: Forward change of address orders to G&G Graphics Inc. 1110 Hamilton Blvd., Suite 1B, South Plainfield, NJ 07080-2004. Subscription rates \$29.95/year in South Plainfield; \$34.95 year out of town.

**SUBMIT YOUR ARTICLES**

We encourage the submission of stories and photos. To have an article published: Type (double spaced) the article and mail, email or fax. Include name, address and telephone number. **Deadline for submission is Monday, 5 p.m.**

**LETTERS TO THE EDITOR**

Submit letters to the editor by mail, email or fax. Letters should not exceed 200 words. We reserve the right to edit for clarity or length. Letters must include name and phone number, for verification.

To comment on the content or to suggest a story idea, contact the editor at (908) 668-0010.

The publisher is not responsible for typographical errors.

**In My Opinion**

Opinions expressed in this column are not necessarily those of the publisher, nor do we guarantee accuracy.

**To the Editor:**

On behalf of myself and my family, I would like to express our heartfelt thanks and gratitude to the South Plainfield Police Department, Rescue Squad and EMTs who responded to my home on February 2. I would particularly like to thank Officer Born and Officer Courtney for their support and kindness during that difficult time.

A special thanks to Ricky at McCrisky-Gustafson Funeral Home for his wonderful help and support.

**THE THIEME FAMILY****Dear Editor,**

In a few weeks the mayor and council will fire one of the most dedicated, competent public workers South Plainfield has ever had.

Joann Graf was born in South Plainfield 61 years ago. She has dedicated her entire life to make our town a better place to live. In the early eighties she was the first woman elected to the Borough Council. She served as the first woman president of the council. Every time she voted on a law she always looked to see that it benefited the people of South Plainfield. She never voted exclusively down party lines because she was always her own person. She started the Cultural Arts Commission to make sure that every resident had the opportunity to participate and succeed in the arts. Joann was the first woman to serve on the South Plainfield Recreation Commission. Joann ran her own business for decades in South Plainfield. Joann was instrumental in reestablishing the plans to build an alternate route on the south side.

In 2002 Joann was appointed South Plainfield's Senior Center Coordinator. She was spectacular in this job. Every senior became her number one priority, from cooking lunches, to setting up bus transportation, to organizing trips, to arranging activities, to making sure that our seniors were taken care of. In 2008, Joann was asked to become the borough clerk. For almost two years she did both jobs. She has been praised for her job performance and her dedication to South Plainfield. She even finds time to bring communion to people who are not able to make it to church.

Joann has successfully beaten cancer twice in her life. She has met every challenge with a sense of pride

and contentment that make her the dynamic person she truly is. In April Joann will lose her job and her medical coverage when the mayor and council fire her. Their reason is simply because they can. Is this the way a loyal, dedicated resident should be treated? I know the answer; no! What a shame to lose Joann because of her party affiliation. Who wins with this decision? No one! Who loses? Our community!

Joann, you are a caring, warm, loving individual. You will be sorely missed but never forgotten.

**MIKE ENGLISH****To the Roosevelt School Families:**

On behalf of the Roosevelt Student Council and myself, we would like to extend our sincerest thanks for all your support and donations during the February Leukemia/Lymphoma fundraiser, "Pennies for Patients." Your donations have made a positive difference in the lives of children afflicted with leukemia or lymphoma. Roosevelt Elementary School was able to contribute a total amount of \$2,840.70. First prize was tied between Ms. Boschen's kindergarten class and Mr. Bertram's third grade class. Both classes raised \$249 and will receive a pasta party from the Olive Garden as their prize.

This fundraiser helps children with blood cancers in Northern New Jersey by supporting research, advocacy, community service, patient aid and public and professional education. Because of this kind of support, modern treatments have greatly improved cure rates or remission duration for some patients with leukemia and offered more hope than ever before to those affected with blood cancers.

For more information regarding the Leukemia & Lymphoma Society in Northern New Jersey you can call (908) 654-9445. Thanks so much!

**SINCERELY,****MRS. MOSLEY, M. ED, MSW, LCSW  
SENIOR COUNCIL ADVISOR****Dear Editor,**

As a parent, I have a responsibility to do all that I can to protect my children. When I sponsored the state's first anti-bullying law in 2002, I did so for the same reason. It is the most basic duty that I share with parents across the State of New Jersey. And when the opportunity arose to act once again in 2010, I sponsored the Anti-Bullying

**Submit Your Letters to the Editor**

Send your letters to South Plainfield Observer, 1110 Hamilton Blvd., Suite 1B, South Plainfield, NJ 07080, or fax to 908-668-8819, or via email: spobsobserver@comcast.net. **Deadline is Monday, 5 p.m.** Letters must be accompanied by a name and telephone number for verification. Limit letters to no more than 200 words. We reserve the right to refuse a letter, to edit for clarity or length, and to limit the number of letters submitted on the same subject. Submission is not a guarantee of publication. We do not accept anonymous letters. Letters are strictly opinion.

Bill of Rights, a law that transcends party lines and brought Democrats and Republicans together for the sake of our children. The physical and emotional well-being of New Jersey's young people depends on that sort of progress.

Ensuring the welfare of our kids is not a choice. When it comes to drugs and alcohol, obscenity, child abuse, and a whole host of other dangers to our young people, no one is looking the other way. Cases of harassment, intimidation, and bullying in our schools should be no different.

The Anti-Bullying Bill of Rights is more than just words; it is a promise to every child in the state of New Jersey. It is a declaration that we will not condone harassment, nor will we be bystanders in the presence of intimidation. For so many schoolchildren across the state, it is a lifeline.

The bipartisan enactment of this law was symbolic: right knows no party or ideology. The fact of the matter is that, for a student who fears going to class each day due to harassment or the possibility of physical harm, party labels have no significance.

The State of New Jersey has set an example for generations to come in its commitment to stand up for justice and equality for all people. And if there is any single legacy for which our Legislature may be remembered, I would hope it would be its adherence to these principles.

Educating our kids means giving them all the tools they need to succeed, from simple things like pens and notebooks to the more complicated peace of mind that comes with knowing that every adult in the State of New Jersey stands with them against bullying. We owed it to these children to deliver.

**BARBARA BUONO, SENATOR  
18TH LEGISLATIVE DISTRICT**



Brenda Vallecilla

**BRENDA VALLECILLA**

**Attorney At Law**

300 Maple Ave, Suite 201 • South Plainfield  
908-756-2173

Wills/Real Estate/Traffic Tickets/Personal Injury  
Divorce/Child Support/Name Changes

*Mention this ad for FREE consultation*

Call for an appointment; Evenings and Saturdays available

**You're In LUCK!** FREE DELIVERY!

**HAPPY ST. PATRICK'S DAY!**

**Corned Beef Sloppy Joe Platter \$49.95**

*With choice of 2 homemade salads (Serves 8-10)*

**CUSTOMER APPRECIATION DAY**

**Saturday, April 21-Free sampling table! Giveaways! Prizes!**

#1

**HOMETOWN HEROS**

340 Hamilton Blvd. (By the DARE Bldg.)

(908) 755-HERO (4376)

✓ 1<sup>ST</sup> IN QUALITY

✓ 1<sup>ST</sup> IN SERVICE

✓ 1<sup>ST</sup> IN PRICE

Check out our menu at [www.hometownherosdeli.com](http://www.hometownherosdeli.com)

**BRING IN THIS AD & GET**

**ONE DOZEN BAGELS \$5**

**FOR ONLY \$5**

**908-222-4010**

**Designer Bagels & Deli**

**Golden Acres Shopping Center**  
692 Oak Tree Ave., S. Plainfield



**MOHN'S FLORIST**

2325 plainfield ave., so plainfield  
908 561 2808  
[www.mohnsflorist.com](http://www.mohnsflorist.com)

- weddings and receptions
- sympathy designs • everyday floral gifts
- fruit, gourmet, gift baskets
- dish gardens • balloon bouquets

*let us create anything you can imagine....*



## T. Robak Renews Adopt-A-Spot

Terry Robak of T. Robak Associates, LLC has renewed his Adopt-A-Spot agreement with the South Plainfield Clean Business Association for the next two years. He will continue to remove litter from the preserved Open Space parcel on Belmont Avenue between Arlington and Tremont avenues. This forested wetland absorbs stormwater and carbon dioxide and provides shade, oxygen and wildlife habitat. Unfortunately, like most undeveloped land in the borough, it also accumulates litter and attracts illegal dumping.

Robak first decided to adopt this spot in 2010 after participating in the South Plainfield Business Association's adoption of the Lakeview Avenue overpass. He has his crew of four people working on the Belmont Avenue open space site monthly. This has made a big improvement in the area.

The CBA is looking for more adopters of undeveloped areas, such as the vacant lots on Sampton Avenue and Plainfield Avenue, and the head of Belmont Avenue on Metuchen Road.

For more information about the Adopt-A-Spot program, contact the Clean Communities Coordinator at (908) 226-7621.

## Brayden Carr Foundation Plans Annual Fundraiser

In Brayden's Eyes, The Brayden Carr Foundation, will hold its annual fundraiser, "Bray's Run & Fun," on Sunday, April 15 featuring a 5K run and 1.5 mile fun walk followed by a basketball game between the Rutgers men's basketball coaches and alumni versus the South Plainfield PBA.

If you'd like to participate in the run/walk, registration will be held from 8:15 to 9:45 a.m. in the South Plainfield High School gym. Registration fee is \$30 run/pp; \$20 walk per family with children under 14; or \$10 students with ID. Registration includes free admission to the basketball game, or pay \$5 admission at the door. The run/walk starts at 10 a.m. and the basketball game starts at 11 a.m.

Registration forms are available online, at the SPHS athletic and main offices, and at the Middle School. Jointly hosted by the Middle School PTO and the South Plainfield PBA, 100% of the net proceeds benefit kids through various scholarships.

You can also register securely online via PayPal at [braydencarrfoundation.org](http://braydencarrfoundation.org) or send a check or money order along with the registration form to: In Brayden's Eyes, The Brayden Carr Foundation, P.O. Box 129, South Plainfield, N.J. 07080.

## GOP Council Candidates Sought

The South Plainfield Republican Organization will be screening candidates for Borough Council. Please call (908) 753-0247 if you are interested. Deadline is March 20.



The dredging of Spring Lake is now complete.

## Spring Lake Park Work Ends

By Libby Barsky

Patrick McNulty of the Middlesex County Mosquito Commission said goodbye to Spring Lake Park on March 2.

During the past few months, McNulty has removed approximately 50 truckloads of soil as part of the project to rid the lake of the weedy islands that have formed over the years on both sides of the middle bridge. He also removed some of the soil that had accumulated in the stream area closest to the bridge near the approach from the parking lot off Maple Avenue.

The dredging project, which began in January because the cold would lessen the methane gas fumes emanating from the ground, attracted quite a few "regulars" who would stop to watch and talk with McNulty and ask him questions about the work.

"The people were really friendly," said McNulty, who doesn't always receive similar reception at some of the other locations where he has worked. The question most often asked was, "When will the work be finished?"

Planning for a park in that area began in the 1940s, but it was not until Green Acre funds became available in the early 1980s that the county project moved forward. Before the park could become a reality, agreements had to be made between the Middlesex Water Company, whose wells are on the property, and the U.S. Army Corps of Engineers, who had to approve the lake's water flow before DEP approval was given for the project since the lake is in a flood plain.

Spring Lake Park was officially dedicated in March 1983 by the Middlesex County Board of Chosen Freeholders.

## Volunteers Needed For Litter Cleanup Week April 21-28

The South Plainfield Clean Communities Advisory Board will sponsor a borough-wide cleanup the last week in April. The main cleanup event will take place on Saturday, April 21. Volunteers will meet from 9 to 10 a.m. at the Municipal Building, 2480 Plainfield Ave., to collect equipment and cleanup assignments. They will target roadsides, parks, streams and

vacant lots. Residents are welcome to organize a crew, or to come on their own. All volunteers are invited back to Borough Hall at noon for a free pickup picnic.

For more information, call Alice Tempel, the Clean Communities coordinator, at (908) 226-7621, or email [atempel@southplainfieldnj.com](mailto:atempel@southplainfieldnj.com).

**Prudential**  
New Jersey Properties  
Moretti Division

**The Strength of Teamwork,  
the Reputation for Results.**

Andrea Lacerda, Jesse Lacerda  
Sue Espin, Michele Leavy

South Plainfield's Premier Real Estate Team  
225 Maple Ave., South Plainfield, NJ 07080

Bus: (908) 755-5300 ext. 302  
Cell: (908) 578-1166

**The Lacerda Team** [Homes@LacerdaTeam.com](mailto:Homes@LacerdaTeam.com)  
[www.LacerdaTeam.com](http://www.LacerdaTeam.com)

**BUYING ALL COINS, PAPER MONEY, SCRAP GOLD, STERLING SILVER, AND PRECIOUS METALS**

**TOP PRICES PAID**

References Available Upon Request

**We Can Offer the Absolute Best Prices**  
on all your coins, currency & scrap gold.

**I will evaluate your material and provide you with a free VERBAL appraisal (Call for details.)**

Email: [gregheim@njcoinbuyer.com](mailto:gregheim@njcoinbuyer.com)

**GREGORY S. HEIM, LLC**  
Full-Time Coin Dealer and Professional Numismatist  
**908-405-6408**  
**CALL ANYTIME**  
(If no answer, leave message.) I am available for appointments every day of the week from 8AM-8PM.  
[www.njcoinbuyer.com](http://www.njcoinbuyer.com)

LIFE MEMBER: American Numismatic Association, Garden State Numismatic Association, Watchung Hills Coin Club (original member).  
MEMBER: South Plainfield Business Association, Early American Coppers Club, Numismatic Literary Guild, Colonial Coin Collectors Club, NJ Numismatic Society

**You will always receive a base quote on all of the items that I buy (i.e. \$25 & up).**

## Dance Fundraiser to Support Victims of South Plainfield Fire

Unable to shake the sadness she felt from watching news stories of the recent South Plainfield fire that took the lives of a grandmother and four of her seven grandchildren, Liza Aninipot made a vow to help the survivors in the best way she knows how—a Zumba fundraiser.

"I teach practically around the corner from the fire. I can't bring myself to drive in that direction on Clinton, but I felt I needed to do something instead of staying glued to the TV and my computer," said Aninipot, who teaches at Combinations Martial Arts & Fitness Academy on Montrose Avenue just off South Clinton Avenue.

"A Time to Dance" Zumba fundraising event will be held on Sunday, March 18 from 11:30 a.m. to 1:30 p.m. at BUF Health & Human Services, 403 West 7th St. in Plainfield. Minimum donation is \$15 per person. All proceeds will benefit the Clinton Avenue fire victims. A check will be written to The Boyle Memorial Foundation of South Plainfield. Those unable to attend are encouraged to make check donations to The Boyle Memorial Foundation with "Clinton Avenue Fire Victims" and "A Time To Dance Fundraiser" in the memo field. Checks should be dropped off during the fundraising dance-a-thon.

Zumba is a follow-along dance exercise program created by Columbian native Alberto "Beto" Perez while he

was an aerobics instructor in Florida. Aninipot hopes people will come to the fundraiser and try an activity that meshes contemporary dance moves and music with aerobics.

Aninipot, who has been an organizer of New Jersey's largest Zumba fundraising events such as the Party in Pink Susan G. Komen for The Cure Zumba fundraisers and the American Heart Association events coming in April, started emailing and calling nearby Zumba instructors asking for participation. Without hesitation, three nearby dance instructors signed on to the project; Shamida "Mida" Coney, founder of the Zumba with Mida Meetup Group and Zumba teacher at Central Jersey Arts Charter School in Plainfield; Anniely Acosta, a Zumba instructor at LA Fitness in South Plainfield; and Warren Mayorga, a belly dance and Zumba instructor at Curves on Stephenville Parkway in North Edison.

"I'm excited because everyone is volunteering their expertise. BUF Director Sondra Clark is allowing us to use the preschool's facilities for free. All the instructors, including myself, are volunteering. Combinations Martial Arts & Fitness has agreed to be a sponsor. Even our promotional postcard by Red Ibis Hosting was done for free. All this generosity will allow us to show our financial support to the family," Aninipot explained.

## Project Graduation Tickets Now on Sale

The South Plainfield High School PTA will host the annual auction on Saturday, April 28, 6 p.m. (doors open) to 11 p.m. in the SPHS gym. Profits will go towards Project Graduation for the Class of 2012. Price per ticket is \$12.

Call Tracey Hartmann (908) 750-6194 for information regarding tickets and to reserve your table. For information or to make a donation, contact Sharon Miller (908) 754-6461. This is a great event for a very worthwhile cause.

**KC's Korner**

100 Oak Tree Ave. South Plainfield  
908.757.5306

**St. Patrick's Day ~ Saturday, March 17**  
**All-You-Can-Eat**

Cornd Beef & Cabbage Platter \$16.95

Also Serving A La Carte  
Sheperd's Pie • Fish N' Chips • Cornd Beef Sandwich

Lunch Served  
7 Days 12-4pm  
Dinner Served  
Mon 4-8 pm;  
Tue, Thur, Sun 4-9pm,  
Fri & Sat 4-10pm

**Lawncuts** Starting at **\$30**

**Spring is Here!**

## Landscape Design, Lawn Maintenance Installation Services, Power Washing

**\$50 off**

**SPRING CLEANUP**

Now through May 1. Cannot be combined with yearly service contract coupon

**\$30 off** With this ad

**POWER WASHING**

House • Decks • Fences • Patios

**\$25 off** With this ad

**Shrub Pruning & Trimming**

**\$100 Off** With this ad

**INSTALLATION**

New Landscaping  
Valued at \$4,000 or more

**\$25 off** With this ad

**Driveway Sealing**

**\$100 Off** With this ad

**Yearly Service Contract**

**k.bulla**

Property Maintenance, LLC

**732.558.0356**

**C.J. SCOTT Services**

**GUTTER SPECIALISTS**

✓ Cleaned  
✓ Repaired  
✓ Installed

• Roofing & Siding  
• Soffits and Aluminium Trim

Licensed & Insured

Call Chris for  
FREE ESTIMATE & Best Price!  
**732-424-0454**



# events

## Around Town

### Sacred Heart Church Lenten Fish Dinners

March 16, 23 & 30

South Plainfield Knights of Columbus Council #6203 and Sacred Heart Church will sponsor fish dinners on Fridays during Lent; March 16, 23 and 30. Dinners will be served from 5-7 p.m. in the Holy Savior Academy cafeteria (formerly Sacred Heart School), 149 South Plainfield Ave.

The menu features filet of fish (fried, broiled or parmesan), cheese ravioli, manicotti and linguini or pizza, fresh garden salad, rice pilaf, French fries or macaroni and cheese, cole slaw, coffee, tea or cold drink, plus dessert.

Adults, \$9; seniors, \$8; children \$5. Pay at the door. Take out available.

Stations of the Cross will be held in the church at 7 p.m.

### Blood Drive at OLC

March 16

Our Lady of Czestochowa Church is sponsoring a blood drive on Friday, March 16 from 3 to 7:30 p.m. in the parish hall. Donors must be 18 or older.

For more information, call Dawn at (908) 444-8994.

### Elks Corned Beef and Cabbage Dinner

March 17

The South Plainfield Elks Veterans Committee, 1254 New Market Ave., is sponsoring its annual corned beef and cabbage dinner on Saturday, March 17 from 4:30 to 9 p.m. All you can eat, includes soda and dessert, cash bar. Adults, \$12; children, \$5.

For more information, call Lou Peralta at (908) 756-6406.

### Free Medical Review At Smile Pharmacy

March 24

Have you ever wondered about what is the best time of day to take your medication or which pills should or should not be taken together? The answers to these questions will be addressed during a free medication review at Smile Pharmacy, 1110 Hamilton Blvd., (next to the Observer office) on Saturday, March 24 from 9 a.m. to 2 p.m.

The public is invited to attend. Breakfast will be served from 9 to 11 a.m. RSVP by calling (908) 756-3232 ensure adequate time for each patient.

### Franklin School PTO Auction/Raffle

March 24

The Franklin School PTO will hold its annual auction/raffle on Saturday, March 24. Proceeds will be used to fund several school programs.

If you are a business and would like to donate merchandise, a gift certificate or make a monetary donation, call Tara Rocco at (908) 668-1458.

Tickets are now available by calling Jenn at (908) 769-5849 or Tara at (908) 668-1458.

### Girl Scouts Pancake Breakfast

March 25

The South Plainfield Girl Scout Community, in conjunction with the South Plainfield Elks, will host a pancake breakfast on Sunday, March 25 from 8 a.m. until noon. The all-you-can-eat menu will feature pancakes, eggs cooked to order, French toast, bacon, sausage, home fries, toast, juice and coffee. \$6 for adults; \$5 for seniors; \$4 for children 4-12; three and under are free. The lodge is located at 1254 New Market Ave.

For more information, please call Sharon Reuter at (908) 791-1214.

Sunday, March 25 at 2:30 p.m. in Fellowship Hall at Wesley Methodist Church, 1500 Plainfield Ave.

There will be an assortment of singers, dancers and musicians performing this year. Admission is free.

### Columbiettes Spring Fashion Show

March 31

The South Plainfield Columbiettes will host a Spring Fashion Show on Saturday, March 31 from 11 a.m. to 2 p.m. at the Knights of Columbus Hall, 334 Hamilton Blvd.

Casual, business and dressy fashions will be provided by Dress Barn of South Plainfield and will be modeled by members of the organization. Sandwiches, salads, desserts, coffee and different flavored teas. Tickets are \$12.

For tickets, call Kathy at (908) 756-3772 or Nancy at (908) 561-5917.

### Pilgrim Covenant Coffeehouse

March 31

It's not just coffee! Pilgrim Covenant Church, 3121 Park Ave. will hold a coffeehouse on Saturday, March 31 at 7 p.m. Tickets will be sold at the door. Adults, \$7; children (6-11), \$5; children under five are free.

### VFW Country Breakfast

April 1

The VFW on Front Street will host a country breakfast on Sunday, April 1 from 8 to 11 a.m. Come and pick the lucky Easter egg to win a free breakfast!

For more information, call (908) 688-9751.

### — Out of Town —

### Ballet: Romeo And Juliet at Kean

March 16

Kean Stage presents Moscow Festival Ballet's *Romeo and Juliet* and *Chopiniana* on Friday, March 16 at 7:30 p.m. in Kean University's Wilkins Theatre. Tickets: \$30; senior, student or child, \$20.

For tickets, call (908) 737-7469, visit [www.keanstage.com](http://www.keanstage.com) or in person at the theater box office, 1000 Morris Ave. in Union.

### SENIOR CENTER Calendar

**March 17**—St. Patty's Day Luncheon food, entertainment—\$17 p/p, sign up at the Senior Center

**March 21**—Sands Hotel, Atlantic City \$28.50, sign up at the Senior Center

#### MONDAYS

Crocheting ..... 9:30-11:30 am  
Yoga ..... 10:30 am  
Art Class ..... 11:30 am  
Active Seniors ..... 11:45 am

#### TUESDAYS

Bingo ..... 10 am-2 pm  
Ladies Social Group ..... 10 am

#### WEDNESDAYS

Exercise Class ..... 8:45 am  
Shopping ..... 9 am  
Line Dancing ..... 10 am  
Computer.. 10 am, 11:30 am, 1 pm  
Crocheting ..... 1 pm  
Tai Chi ..... 2 pm

#### THURSDAYS

Active Seniors ..... 9:00 am  
Crafts Class ..... 10 am  
Computer.. 10, 11:30 am, 1:30 pm  
Exercise Class ..... 1:15 pm

#### FRIDAYS

Bingo ..... 10 am-2 pm

Senior Center is open daily 8 a.m. to 4 p.m. Closed Saturdays & Sundays.  
(908) 754-1047

### St. Patrick's Day Dinner at St. Francis

March 17

St. Francis Episcopal Church, 400 New Market Rd. in Dunellen, will host its annual St. Patrick's Day dinner on Saturday, March 17 from 5:30 to 7:30 p.m. Corned beef and cabbage, potatoes, carrots and dessert. Tickets: Adults, \$12.50; children under 10, \$7.

Tickets are available now by calling (732) 968-6781.

### Pot Luck Dinner at Temple Shalom

March 17

Temple Shalom of Fanwood/Scotch Plains welcomes the community to participate in a kosher-style potluck dinner on Saturday, March 17 at 6 p.m. and Megillah reading at 7 p.m. Register for dinner in advance at [www.sholomnj.org](http://www.sholomnj.org). Participants are encouraged to come in costume. Temple Shalom is located within the Fanwood Presbyterian Church.

### Sacred Heart Church

149 South Plainfield Ave.  
South Plainfield, NJ

Rev. John Paul  
Alvarado, Pastor

#### Mass Schedule:

Saturday Mass 9:00 a.m., 5:00 p.m.

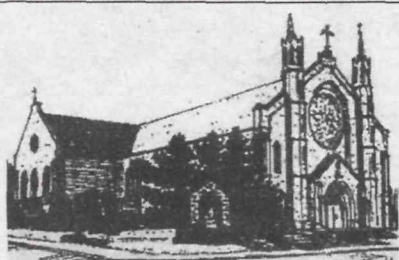
Sunday 9:00, 11:30 a.m.

Daily 9:00 a.m. Tuesday, Wednesday, Friday, Saturday

7:00 p.m. Monday (Church), Thursday (Parish Center Chapel)

Holy Days 6:30 a.m., 9:00 a.m., 7:00 p.m.

Sacrament of Reconciliation—Saturday 10-11:30 a.m. and at other times by appointment



### Lift Chairs from Twin City Pharmacy & Surgical

A Wonderful  
Gift Idea!



Twin City Pharmacy & Surgical partners with Golden Technologies to bring you the best products to enhance your life at home. The Lift Chairs in our store are best-in-class products to give you many years of comfortable and convenient use.

If you have any questions or want to discuss special requirements, please contact us directly and our team of mobility experts will help find the Lift Chair that's right for you. Prices begin at \$799 and we have dozens of fabric choices to choose from.

If qualified, Medicare may cover part of the cost of your lift chair. Your supplemental insurance may also pay a portion. Assignment is not accepted but we will bill on your behalf to assist you in any reimbursement available. This also depends on the type of policy you have and whether or not we are listed as providers for this insurance company. Our staff will be more than happy to assist you in any questions you may have concerning insurance.

Our team of mobility experts will help find the Lift Chair that's right for you.

### Twin City Pharmacy & Surgical

Telephone: 908-755-7696. Fax: 908-755-6003.

1708 Park Ave South Plainfield

Bill Ashnault RPh.—Owner • Sandy Severini—Owner.  
Tom Cassio Jr.—Owner • James Kim RPh.

24 Hour Emergency Care Service—Free Delivery

### Your Health Matters to Us.

#### Free Delivery

Regional Hospice  
& Home care  
provider

• Flu and  
Pneumonia  
Shots

• Major  
medical &  
medicare  
billing  
available

• Hospital beds

• Wheel chairs

• Walkers

• Diabetic,  
Surgical &  
Ostomy  
Supplies

• Wound Care

• Oxygen

## Your Health MATTERS

A Source for Medical/Dental/ Wellness Professionals

The Center for Aesthetic and  
Reconstructive Dentistry, LLC

JOSEPH AIELLO, D.D.S.

### IMPLANT, COSMETIC, & GENERAL DENTISTRY

160 Oak Tree Ave., South Plainfield • (908) 756-3600

#### FREE CONSULTATION

Implant or Invisalign  
with X-ray

May Not Be Combined With Any Other  
Coupons Or Discounts Expires 3-30-12

#### CLEANING, EXAM & X-RAYS

ONLY \$69.99

New Patients Only - Regular Price \$285  
May Not Be Combined With Any Other  
Coupons or Discounts. Expires 3-30-12

\*Most insurance  
accepted. Office  
discount plan  
available\*

### Advanced Chiropractic & Wellness Center



Dr. Norayr Ozbalik, DC  
19 years experience

• Neck pain, back pain, headaches, numbness, tingling,  
weakness & pain in arms and legs • Fibromyalgia • Sciatica  
• Auto accident related injuries • Whiplash  
• Advanced certification on whiplash injuries

904 Oak Tree Avenue, Suite O, South Plainfield

(908) 561-1777 Fax: 908-561-9711

[www.drozbalikchiropractic.com](http://www.drozbalikchiropractic.com)

Most major medical insurance & Medicare accepted

To advertise your  
business in Your  
Health Matters,  
call 908-668-0010.

### CAREGIVER SERVICES

Marisol's Home  
Caregiver Services

Family owned & operated  
Providing affordable  
in-home care, daily or live-in

NJ State licensed, fully insured & bonded

Services include and are not limited  
to:

• Companionship • Meal prep  
• Personal care • Laundry  
• Transportation • Errands  
• Light housekeeping • Medication reminder

Please call for a free  
in-home consultation.

Call (732) 912-9312



For more information, call (908) 889-4900 or visit our website.

## Woodbridge WOWs Open Dance

**March 18**

Woodbridge Widows Or Widowers will hold an open dance on Sunday, March 18 from 7 to 11 p.m. at the Knights of Columbus Hall, Morrissey Ave. in Avenel. Refreshments served. Everyone is welcome. Admission: \$10 members; \$12 guests.

For more information, call (732) 381-3255 or (908) 757-0515.

## Christine Brewer Sings at Enlow Hall

**March 24**

Kean Stage presents Grammy Award winning American soprano, Christine Brewer on Saturday, March 24 at 7:30 p.m. in Kean University's Gene & Shelley Enlow Recital Hall, 215 North Ave. in Hillside. Tickets: \$35; senior, student or child, \$20.

For tickets, call (908) 737-7469, order online at [enlowhall.kean.edu](http://enlowhall.kean.edu), or in person at the box office.

## Temple Sholom Pray & Play

**March 24**

Temple Sholom of Fanwood/Scotch Plains, located in the Fanwood Presbyterian Church at the corner of Martine and LaGrande avenues, invites families with children ages four and under to a Shabbat Pray & Play on Saturday, March 24 at 10 a.m. Interactive 30-minute service features music, maracas, puppets and parachutes. Followed by a free bagel brunch in the playroom. Older siblings are welcome.

For more information, call (908) 889-4900, email [sholom@sholomnj.org](mailto:sholom@sholomnj.org), or visit [www.sholomnj.org](http://www.sholomnj.org).

## Emergency Foot Care Day

**March 24**

Family Foot & Ankle Specialists, 250 Old New Brunswick Rd. in Piscataway, invites those who have no health insurance to come in and be treated by Dr. Peter Wishnie at no cost on Saturday, March 24 from 9 a.m. to 1 p.m. Services include exam, treatment, x-rays, strappings, injections and ingrowns.

For more information, call (732) 968-3833.

## Upscale Singles Dance Party

**March 24**

Steppin' Out Singles is holding an upscale singles dance party on Saturday, March 24 at 8 p.m. at the Woodbridge Hilton Grand Ballroom, 20 Wood Ave. South in Iselin. Ages 40 and up. No jeans/t-shirts/sneakers/shorts. Admission: \$17.

For more information, call (732) 656-1801.

## Blood Donors Needed

**March 24**

The Deutscher Club of Clark is hosting a blood drive in conjunction with The Blood Center of New Jersey on Saturday, March 24. The club is located at 787 Featherbed Lane. Hours of donation are from 8 a.m. to 2 p.m. Each donor will also

receive a \$10 Shop-Rite gift card. The entire process generally takes under one hour. Donors will receive a free cholesterol screening.

For more information or to sign up for this blood drive, call the blood center at 1-800-652-5663, ext. 155.

## Gesang-und Turn-Verein Dinner/Dance

**March 24**

Plainfield Gesang-und Turn-Verein, Inc. will host a dinner/dance on Saturday, March 24 at 6:30 p.m. at Singer Hall, 220 Somerset St. in North Plainfield. Come and join us for a delicious pork roast dinner with lots of different sausages and all the trimmings. Coffee and cake will be served. Music for your dancing pleasure will be provided by the famous Norbert Ludwig band.

Tickets are \$20 for members and \$22 for non-members. For more information, call Victor at (908) 276-8572 or Joan at (908) 647-0819.

# QSAC Rates District "High Performing"

By Libby Barsky

The South Plainfield School District has received an updated evaluation under the Quality Single Accountability Continuum (QSAC) monitoring system. Based on two portions of the recently updated district performance review the evaluation of the district is now designated "high performing." Bari A. Erlichson, chief performance officer of the New Jersey Department of Education, informed Interim Superintendent of Schools Dr. Gary Bowen of the change in a letter dated January 30, 2012.

The updated evaluation took place in January in two of the five areas rated in the district performance review. The April 2009 rating of 75% for Instruction and Program went to 86%; an April 2009 rating of 78% for Governance went to 89%. Instruction and Program includes the curriculum being in alignment with current state board standards including aligning with career technical education and converting to common core standards. Governance includes adopting policies for annual evaluation of all staff, tenured and non-tenured, and using test scores and other data to

analyze the professional development plan with teaching needs.

The new rating brought the instruction and governance areas closer to the earlier ratings of the three other district performance review areas: Fiscal Management, 82%; Operations, 92% and Personnel, 98%, which they held from 2009 through 2012.

"Your district has now satisfied at least 80% of the indicators in all five

areas of the QSAC review process and has been designated 'high performing,'" wrote Erlichson, adding, "Acting Commissioner Cerf has updated the district's placement on the QSAC continuum and will recommend that the State Board of Education certify your school district for a period of three years as providing a thorough and efficient system of education."

## SPEF Raffle Tickets on Sale

The South Plainfield Education Foundation annual 50/50 raffle tickets are now on sale for \$5 each. The drawing will be held on Friday, April 13 at the Education Foundation's Wine Tasting. Cash prizes are a per-

centage of the total sale of tickets.

Tickets will be sold at the Franklin School Auction on Saturday, March 24. They can also be purchased by calling Marge Reedy at (908) 561-5800, ext. 302.

# JOE FASANO

732.752.3555

FREE ESTIMATES

## HEATING & COOLING

*We've got a special attraction for you...*

Ruud Super High Efficiency Air Conditioners and Furnaces - Paired Up For Peak Performance!



# Need New Dentures?

## Cosmetic Dental Associates

**Complimentary Consultation (\$110 value) or Second Opinion**

**Lab On Premises  
Same Day Relines and Repairs  
Implant Dentures**

**Call Us Now!**

Are you embarrassed by loose dentures that slip?  
Uncomfortable with the way your dentures fit?

## Cosmetic Dental Associates

4917 Stelton Rd.  
Hadley Center/S. Plainfield

908-561-5100 • 908-753-9901

[Cosmeticdentistnewbrunswick.com](http://Cosmeticdentistnewbrunswick.com)

- We participate in most insurance plans
- Offer Interest Free Financing Programs
- Emergencies Seen Same Day
- New Patients Welcome

Send Your Community Events to:

[spobserver@comcast.net](mailto:spobserver@comcast.net)



sports

BY GARY LAMPASONA

JUNIOR BASEBALL CLUB

Spring is definitely in the air... **Preseason Work Detail**—Here is the schedule for work detail. Please help us get the complex ready for opening day.

- March 17 at 8 a.m.—Parents of 9 and 10 year olds
- March 24 at 8 a.m.—Parents of 11 and 12 year olds
- March 31 at 8 a.m.—Parents of 13 and 14 year olds
- April 7 at 8 a.m.—Parents of 15, 16, 17 and 18 year olds

**Correction**—Rutgers Certification Class: The lone class is Wednesday, March 21 in the SPJBC clubhouse beginning at 6:45 p.m. Call the baseball club at (908) 754-2090 to register. The fee will be waived for South Plainfield residents. If you are interested in participating on the field with your child's team, a SPJBC membership card and Rutgers certification are a must.

Snack stand sign-up is Wednesday, March 28 from 6 to 8 p.m. in the club-

house. All parents must complete a snack stand duty for each child playing in the SPJBC. Dates and times are on a first come, first served basis; so come early. You can only sign up for yourself. If you cannot attend, your snack stand duty date and time will be assigned.

Be a sponsor for the opening day program. Cheer your player or team on. Check the Parents Handbook or download the form from the handouts section of our website. The deadline is March 31.

Opening Day Countdown... April 14 is only four weeks away.

You can find all this and more information on our website, [www.leaguelineup.com/spjbc](http://www.leaguelineup.com/spjbc).

*"Baseball, it is said, is only a game. True. And the Grand Canyon is only a hole in Arizona. Not all holes, or games, are created equal."*—George F. Will



U-13 ARSENAL

Arsenal Open Spring Season With a Draw

Submitted By Mark Resende

The South Plainfield Soccer Club got their spring season underway this past Sunday, including action that saw the U-13 boys team, Arsenal, play host to Real North Brunswick on Memorial Field. On the next-to-last weekend of winter, game time temperature was a balmy 55 degrees and there wasn't a cloud in the sky—perfect weather for soccer!

Arsenal struck early with a goal by Jason Belanger in the third minute off of a corner kick. They would double their lead to 2-0 in the 17th minute with a strike from Jake Hoffman and that would remain the score through

halftime.

Real North Brunswick came back to take the lead in the second half with three successive goals, one each in the 52nd, 55th and 64th minutes. Arsenal withstood the pressure and came back quickly with a goal of their own in the 66th minute, and the second of the game for Jason Belanger. Both teams battled to the final whistle to earn the 3-3 draw.

A total team effort went into this hard-fought contest. William Arias, Jason Cieszkiewicz, Caleb Kuberiet, Jared Marks, Dylan O'Connor, Alec Pacz, Ricky Pellegrino, Mason Resende,

Edwin Rivas, Elijah Robinson, Kevin Solano, Wallace Truesdale and goalkeeper Nick Plate all played well on this day. Jason Belanger was the "Man of the Match," not only for his two goals but also for the leadership he showed on the field.

Arsenal's head coach is Dave Cieszkiewicz, and his assistant coaches are Greg Hoffman and Steve Belanger. Their next game will be on Sunday, March 18 at 1:15 p.m. at Scotch Plains-Fanwood High School against their long-time nemesis, Vikings. Please come out and support the team and the club. Go Arsenal!

The First Tee of Plainfield/Get Golf Ready

The First Tee of Plainfield will kick off the 2012 season by hosting an annual open house on Saturday, March 31 from 1 p.m. to 5 p.m. Everyone is invited to tour the Plainfield West Nine Golf Course and its practice facility, as well as register for upcoming programs.

The New Jersey PGA and the NJ Golf Foundation will sponsor the event. Members of the PGA and our First Tee of Plainfield professional staff will be providing instruction and discussing our upcoming season's schedule. Food and beverages will be available at no charge.

We want to thank Chick-Fil-A of Menlo Park and Woodbridge for their continuous support of our program and participating in this day. Look for a special appearance by their famous Chick-Fil-A cow at the open house.

Many local groups participated in programs conducted at the facility last season. Some of these groups were students from the Edison, Plainfield, and South Plainfield school systems. Local organizations, including our local YMCA and the Boys and Girls Clubs, are expected to join us. Hopefully, many additional organizations will participate this year.

The First Tee of Plainfield is an affiliate location for The First Tee Metropolitan New York. We are a junior initiative committed to: teaching juniors the game of golf and all its great values; offering youngsters through golf instructions a seamless exposure to life skills values; promoting the game as a family activity; and developing not

only new golfers, but better people.

If you have ever thought about playing golf, then Get Golf Ready is for you. Whether you are a beginner at golf or returning to the game, the Get Golf Ready program is designed to teach you in a few short group lessons. We include everything you'll need to know to step onto a golf course and get out to play with confidence. The Plainfield West Nine Golf Club is a leader in this new PGA of America initiative.

If you know of any group or individuals who want to participate, please pass this information along or contact the Plainfield West Nine Pro Shop at (908) 769-3672. Volunteers are also needed for the event.

Mets and Yankees Baseball Trip

The Club at Ricochet is sponsoring two baseball trips. The first is the Yankees vs. the Cincinnati Reds on Sunday, May 20. Cost is \$70 per person; game time to be determined. Bus will leave from South Plainfield three hours prior to game time.

The second is Mets vs. Chicago Cubs with a tailgate party on Saturday, July 7. Cost is \$70 per person. Bus leaves from The Club at Ricochet

at 4 p.m. The Mets Citifield has group parking in a beautiful park setting that is excellent for tailgating. Anyone who would like to participate should bring an appetizer or dessert to share and their drink of choice. The Club at Ricochet will supply food, tables, chairs, paper goods and utensils for all who participate.

To register for either trip, call Ricochet at (908) 753-2300.

**HAPPY ST. PATRICKS DAY**

follow us on **twitter** @OakTreeWines @BestBeerStore

**OAK TREE** WINE & SPIRITS SERVICE - SELECTION - SAVINGS

facebook **FUNdraiser Wines**

**CARLO ROSSI** ALL TYPES \$9.99 3-L

**LIBERTY CREEK** ALL TYPES \$5.99 1.5L

Santa Margherita Pinot Grigio 750mL	\$19.99	Cupcake Vineyards all types 750mL	\$8.99
Blackstone Wines all types 750 mL	\$7.99	Principato all types 1.5L	\$9.99
Cavit Pinot Grigio 1.5L	\$12.99	Vista Pinot Grigio 1.5L	\$9.99
C.K. Mondavi all types 1.5L	\$10.99	Crane Lake all types 750mL	\$3.99
Beringer White Zinfandel 1.5L	\$8.99	Concha y Toro Fronterra all types 1.5L	\$8.99
Adagio Pinot Grigio 1.5L	\$11.99	Foxmoor all types	\$2.99
Franzia Chilled Red, Blush, Crisp White Refreshing White, Sangria 5L	\$12.99	Ingenook Cabernet, Merlot, Chardonnay, White Zinfandel, Chablis, Blush, Burgundy, Crisp White 3L	\$7.99

**GUINNESS DRAUGHT \$6.99 6-PACK BTLS**

**JAMESON IRISH WHISKY \$26.99 750ML**

**SMITHWICKS IRISH ALE \$6.99 6-PACK BTLS**

Zyr Premium Vodka 750mL	\$27.99	Di Amore Cordials all types 750mL	\$9.99
Beefeater Gin 750mL	\$19.99	Svedka Vodka 1.75L	\$19.99
Admiral Nelson Rum all types 1.75L	\$19.99	Jim Beam 750mL	\$15.99
Duggans Dew Scotch 1.75L	\$24.99	Smirnoff Vodka 80 proof 1.75L	\$19.99
Seagrams 7 Crown 1.75L	\$18.99	Clan MacGregor Scotch 1.75L	\$19.99
Platinum 7X Vodka 1.75L	\$17.99	Jack Daniels Green 1.75L	\$34.99

**Regular/Light ★ Heineken \$19.99 18 Pack Bottles**

**Case 2/12pk Bottles \$26.99**

**KeyStone Light \$15.99 30 pk cans**

**Algora \$19.99 18 pack Bottles**

Busch/Lt 30 pack 12oz cans	\$16.99	Miller Lt/MGD/64 24-pack cans/btles	\$16.99
Labatts Blue 30 pack 12oz cans	\$19.99	Coors/Light 24-pack cans/bottle	\$16.99
New Castle 2/12 pk case bottles	\$23.99	Bud/Lt/55 24 pk cans/bottles	\$16.99
Tecate Cans 24-12oz case	\$16.99	Milwaukee Best/Lt/Ice 30 pk cans	\$15.99
Fosters Lager 2/12 pk Bottles	\$19.99	Molson Ice Loose Case cans	\$19.99

**OakTree Discount Wine & Spirits 902 Oak Tree Ave. South Plainfield, NJ 908-561-0051**

**HOURS SUNDAYS 10am-7pm MON-WED 9am-9pm THU-SAT 9am-10pm**

PRICES VALID 3/15/12 TO 3/18/12

**SPHS South Plainfield High School SPORTS SCHEDULE**

**FRIDAY, MARCH 16**

4pm Fr Baseball-Freehold (H) Sc  
4:15pm V & JV Baseball-Freehold Sc (A) Bus 2:30

**WEDNESDAY, MARCH 21**

4pm Fr Baseball-Nottingham (H) Sc  
4pm V & JV Softball-Bridgewater Raritan (H) Sc  
4:15pm V & JV Baseball-Nottingham Sc (A) Bus 2:30

**SATURDAY, MARCH 17**

11am Fr Baseball-Bridgewater (A) Bus 9:30  
11am V & JV Baseball-Bridgewater (H) Sc

**THURSDAY, MARCH 22**

3:45pm V & JV Softball-Piscataway (A) Bus 2:30

**MONDAY, MARCH 19**

4pm V & JV Softball-Ridge (H) Sc  
4:30pm B V Tennis-Snyder Sc (A) Bus 2:30

**FRIDAY, MARCH 23**

3:45pm BV Track- JFK (H)

**TUESDAY, MARCH 20**

4pm V & JV Baseball-Elizabeth Sc (A) Bus 2:30

**Image is Everything!**

Visit us at 2801 Hamilton Blvd. to see all the products available for your landscape projects. Do it yourself or let the professionals do it for you.

**OPEN 7 DAYS Mon-Fri 7am-5:30pm Call for weekend hours**

**908-822-1000**

**NEW IMAGE Landscaping & Lawn Care** Over 20 Years Experience

**35% OFF ALL SHRUBS**

**We Can Help You Do It Yourself Or We Can Do It For You!**

**LANDSCAPING SUPPLIES & NURSERY**

- Shrubs
- Red, Black, Tan Playground Mulch & Root Mulch
- Topsoil Seed, Erosion Products, Weed Mat, River Red Stone & Stone Dust
- Large Selection of Small Engine Parts & Landscaping Supplies & More

**10% OFF on Paver or Retaining Wall Job**

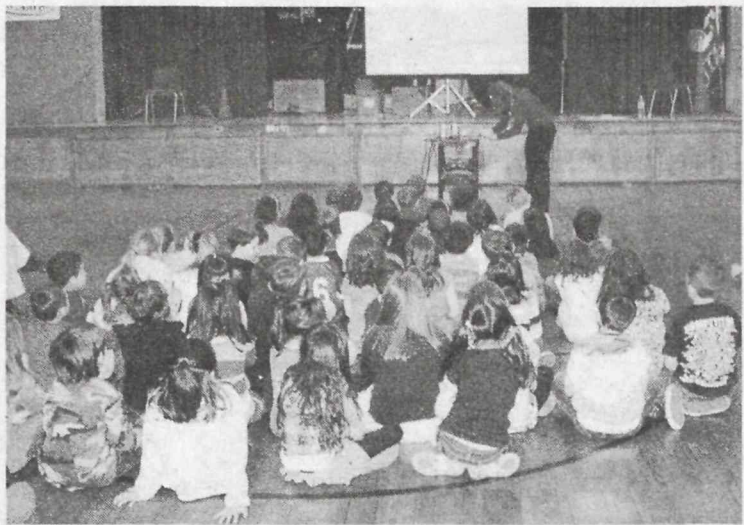
**10% OFF on any Vinyl Fence Job over \$2500**

**NICOLOK PAVERS & RETAINING WALLS**

Contractors Welcome FULLY INSURED FREE ESTIMATES ALL MAJOR CREDIT CARDS ACCEPTED

**Come Visit Us at 2801 Hamilton Blvd. South Plainfield**





Riley School second graders "Skype" with author Elizabeth Raum.

## Riley School Students Skype With Author Elizabeth Raum

Read Across America Day is enjoyed by children throughout the country. Riley School made this year's celebration even more special. Students in the second grade were able to come together and Skype with an author.

Coordinated by computer teacher Desiree Noland with help from Principal Leo Whalen, the students were able to speak with Elizabeth Raum, a New Jersey native known for her non-fiction

work. Raum has branched out to the world of fiction, which she shared with the students at Riley School. Through video conferencing technology, Raum shared her story, *Cedric and the Dragon*. The students were thrilled to be able to hear her story through Skype.

The advent of technology has broadened the classroom for the students and allowed them to connect with people outside of the walls of the school.

## police report

• On Feb. 16 Mary E. Iacone, 25, of Edison was arrested at Kohl's for shoplifting \$236 worth of clothing.

• Yihua Liu, 52, of Green Brook was arrested at Kohl's for shoplifting three pair of running sneakers.

• On Feb. 17 Aisha Saleem, 19, of Piscataway was arrested at Kohl's for shoplifting men's clothing worth \$407.

• The Police Athletic League reported that graffiti had been painted on the eastern side of the PAL building.

• On Feb. 18 Bernette Hobbs-Daniels, 49, of Irvington was arrested for driving on a suspended license and an outstanding warrant.

• Sushim Mitra, 37, of Edison was arrested for driving while intoxicated, re-

fusal to submit to breath testing, careless driving and failure to maintain lamps.

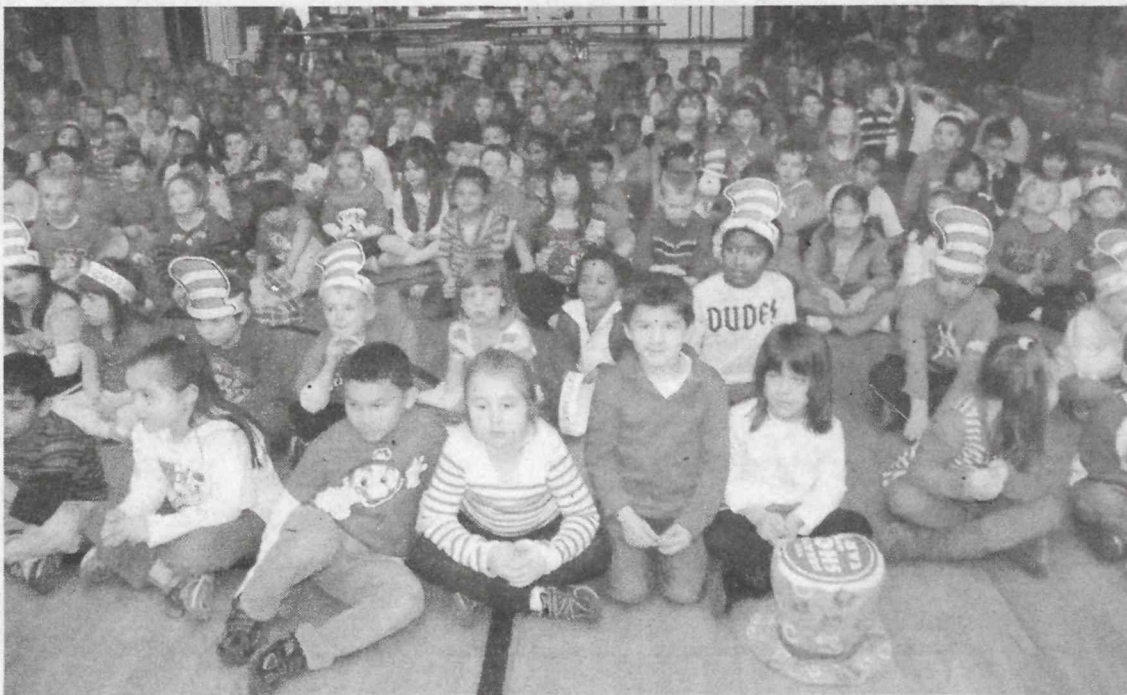
• A South Plainfield Avenue resident reported that their unlocked vehicle had been ransacked. Nothing was taken.

• A Middlesex resident reported the theft of two credit cards from his pants that were in his locker at LA Fitness.

• On Feb. 19 Kandyce N. Peterson, 23, of Piscataway was arrested for driving while intoxicated.

• On Feb. 20 Kenny Moncada, 20, of South Plainfield was arrested for possession of a controlled substance.

• On Feb. 21 a Chambers Street resident reported that the rear window of their vehicle had been smashed.



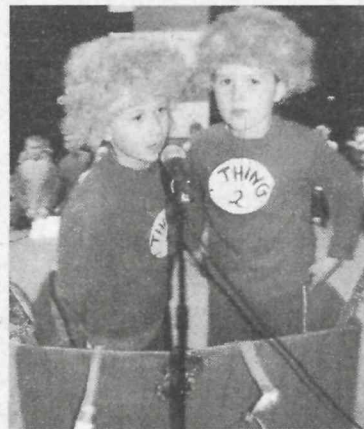
The March 2 Kennedy School assembly celebrated the students' accomplishment of reading 14,000 books.

## Students Read 14,000 Dr. Seuss Books

By Jane Dornick

Kennedy School teacher Cynthia Severino challenged her fourth grade classes at the beginning of the year to read as many Dr. Seuss books as possible and then summarize one of his books. The catch was that the summaries had to be in poetic form, as Dr. Seuss would have written it. Students then put themselves in the poem as a character from one of his books. The children worked in groups and decided how they would perform their poem and what they would wear.

An assembly held on Dr. Seuss' birthday, March 2, to promote the writings and the accomplishment of reading 14,000 books began with the singing of *Dr. Seuss, We Love You*, directed by music teacher Barbara Habeeb. The fourth grade reading classes presented their poems to the student body followed by a slideshow that was put together by teacher Ann Witkowski. The pictures were taken in library class by librarian Laura Zibro and then Witkowski combined them with music.



Students perform their poems.



## For ALL Your Pest Control Needs!



Termites • Bed Bugs • Ants  
Bees / Wasps • Cockroaches  
Raccoons • Mice  
**AND MORE!**

Chris Piazza  
732-207-3012

email: chris@onthespotpestcontrol.com

[www.OnTheSpotPestControl.com](http://www.OnTheSpotPestControl.com)

## Be Cool This Summer!

Call Iarrapino Heating & Cooling  
for a free in-home estimate!

Sales • Service • Installation  
Oil to Gas Conversion  
24 Hr. Emergency Service  
Commercial & Residential Service

Get up to \$3350  
in rebates!

**IARRAPINO**  
Heating & Cooling

732-906-9111

[www.iarrapinoHeatingandCooling.com](http://www.iarrapinoHeatingandCooling.com)



Owner:  
Edward  
Iarrapino

NJ Lic. # 13VH05669200



## Get The Beautiful Smile You Always Wanted



Cosmetic & General Dentistry  
Loay Deifallah, D.D.S.

281 Durham Ave., South Plainfield  
[www.durhamdentalcenter.com](http://www.durhamdentalcenter.com)

13 Wall St., Raritan, NJ  
[www.wsidental.com](http://www.wsidental.com)

Call For Your Appointment at Either Location  
**908-791-0900**

Most Insurance Accepted • Financing Available  
Se Habla Espanol  
Evening & Weekend Hours by Appointment

Call 908-791-0900 to schedule an appointment today!

Exam, Cleaning & X-Rays  
\$69.99 Regular \$255  
New Patients Only. May Not Be Combined  
With Any Other Coupons or Discounts.  
Must Present Coupon. Expires 3/31/12.

Zoom In Office Bleaching  
\$199.99 Regular \$599  
May Not Be Combined With Any Other  
Coupons or Discounts. Must Present  
Coupon. Expires 3/31/12.

**FREE**  
Implant Consultation  
Including X-Ray Regular \$215  
May Not Be Combined With Any Other  
Coupons or Discounts. Must Present  
Coupon. Expires 3/31/12.

## Benefit And Support of The Clinton Avenue Fire Victims

## How You Can Help.

### SEND YOUR MONETARY DONATIONS:

Please make checks payable to: The Boyle Memorial Foundation, a 501 (3) (C) non-profit organization. In the memo portion, put "Clinton Avenue Fire Victims." The Mayor, Council and the Boyle Memorial Foundation will direct these collected funds to the needs and necessities of the fire victims over the next year. Checks should be mailed to: The Borough of South Plainfield, 2480 Plainfield Avenue, South Plainfield, N.J. 07080, Attn. Clinton Ave. Fire Victims, or to each school's main office.

"South Plainfield is a  
close-knit community,  
and in times like these  
we pull together."

—Mayor Matt Anesh

Under New  
Management

Open Hour  
Mon-Sat: 9:30am - 7:00pm  
Sunday: 10:00am - 6:00pm

angel tips  
Nail Spa

Ask  
About  
Our Daily  
Specials

911 Oak Tree Ave. S. Plainfield.

908-561-5443

\$15

**Manicure  
& Pedicure**

New Clients Only

With coupon only. Not to be combined  
with any offer or gift certificate.  
Expires 4/16/2012

\$35

**Spa I Pedicure**  
Hot Stone Leg Massage  
(10 min.)  
Callous Removal

**FREE Manicure & Eyebrow**

With coupon only. Not to be combined  
with any offer or gift certificate.  
Expires 4/16/2012

\$42

**UV Polish Gel  
& Pedicure**

With coupon only. Not to be combined  
with any offer or gift certificate.  
Expires 4/16/2012

\$39

**45min  
Facial**

With coupon only. Not to be combined  
with any offer or gift certificate.  
Expires 4/16/2012

\$35

**Foot Reflexology**  
(45 min.)  
or Ear Candling  
(30 min.)

With coupon only. Not to be combined  
with any offer or gift certificate.  
Expires 4/16/2012

**Wax Special**

Eyebrow Up or Chin \$5/ea  
Under Arm \$8  
Full Leg & Bikini \$25

With coupon only. Not to be combined  
with any offer or gift certificate.  
Expires 4/16/2012

\$65

**Eyelash Extension**

With coupon only. Not to be combined  
with any offer or gift certificate. Expires 4/16/2012

**New Customer  
Special**  
(Any service)

With coupon only. Not to be combined  
with any offer or gift certificate.  
Expires 4/16/2012

**50%  
OFF**

Autoclave Sterilization Same Method Used by Hospital



PUBLIC NOTICE

TAX SALE NOTICE

NOTICE OF SALE OF PROPERTY FOR NONPAYMENT OF TAXES,  
ASSESSMENTS AND/OR OTHER MUNICIPAL LIENS

Public notice is hereby given that I, Kimberly Clifford, Collector of Taxes of the Borough of South Plainfield, in the County of Middlesex, will sell at public auction on, Thursday, March 29, 2012 at the South Plainfield Municipal Complex, Council Chambers, 2480 Plainfield Avenue, South Plainfield, New Jersey, at 10:00 am or at such later time and place to which said sale may then be adjourned, all of the several lots and parcels of land assessed to the respective persons whose names are set opposite each respective parcel as the owner thereof for the total amount of municipal liens chargeable against said lands respectively, in accordance with N.J.S.A. 54:5-1, et seq. as computed to the 29th day of March 2012.

Take further notice that the hereinafter described lands will be sold for the amount of the municipal liens chargeable against each parcel of said land assessed as one parcel, together with interest and costs to the date of sale. Said lands will be sold at the lowest rate of interest bid, not to exceed 18%. Payment for said parcels shall be made prior to the conclusion of the sale in the form of cash, certified check or money order, or parcels will be resold. Separate checks are required for payment of property taxes and for sewer fees and partial payments will not be sufficient to remove these items from the sale. Properties for which there are no purchasers shall be struck off and sold to the Borough of South Plainfield at an interest rate of 18%.

At any time, before the day of the sale, I will accept payment of the amount due on any property with interest and costs. Payments must be in the form of cash, certified check or money order. Industrial Properties may be subject to the Spill Compensation and Control Act (N.J.S.A. 58:10-23.11 et seq.), the Water Pollution Control Act (N.J.S.A. 58:10A-1 et seq.), and the Industrial Site Recovery Act (N.J.S.A. 13:1k-6 et seq.). In addition, the municipality is precluded from issuing a tax sale certificate to any prospective purchaser who is or may be in any way connected to the prior owner or operator of the site. The lands to be sold are described in accordance with the last tax duplicate as follows:

TAX SALE LIST

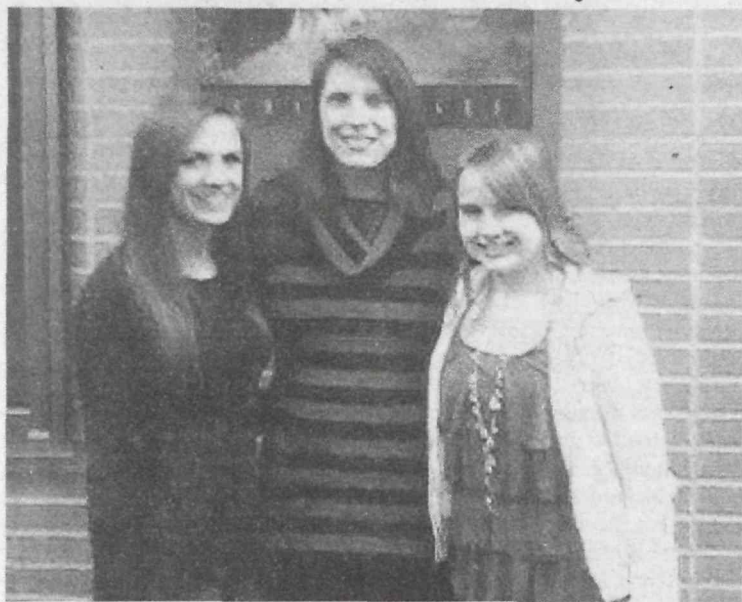
BLOCK	LOT/QUAL	AMOUNT	BLOCK	LOT/QUAL	AMOUNT	BLOCK	LOT/QUAL	AMOUNT			
3	43	STUBBS, JOYCE	425.28	139	19	ROSADO, WILFREDO	238.88	304	5.01	A.STANLEY MUNDY AND COMPANY	9,863.99
6	13	CORDONA, JAIME & MARTHA	425.68	144	14	CHRYSANTHOPOULOS, PAUL & SARA	425.68	306	2	BORN,KIMBERLY& COLVIN,SHANNON ETAL	4,236.22
7	16.02	STANLEY, JIMMY & CAROLYN	425.28	146	4	DRESS, DONALD M. & KULA, LISA A.	425.20	308	12.03	2259 SOUTH CLINTON LLC	544.23
7	27	BENEFICIAL FINANCIAL INC	412.76	148	6	DURAN, NUMA P	1,594.90	308	12.04	2279 SOUTH CLINTON LLC	2,515.05
7	31	KOONCE, MARTIN & VICTORIA	245.97	148	19	BROWN, DANIEL & ANNETTE	425.20	308	12.05	2201-2239 SOUTH CLINTON LLC	23,057.71
7	34	FONTANA, GREGORY & YVONNE	1,197.91	151	12	SMITH, GARY & LISA	238.88	308	39.01	104 SYLVANIA LLC	3,934.60
7	51.01	LOUCAR INC	238.88	152	50	KONE, LACINA & CISSE, AWA	425.68	308	49.\C0001	CHIN, THOMAS W B	426.94
7	51.02	GAMBACORT, LOUIS V.	238.88	152	99	WROTNY, JASON	238.88	308	51.\C0001	SMITH,CHRISTOPHER & CRAIG,MECHELE	424.26
7	65	MILLER, WILLIAM D(V)& DORIS	5,708.30	152	110	LORETTA CONROY FAMILY TRUST	3,180.22	311	50	BARRERA, RICARDO & JULIO & GEORGINA	238.88
7	66	PEDERSEN,ALVIN C & SHIRLEY A.	240.48	152	112	EJIOCHI, GABRIEL E. & MARY ROSE	255.82	311	51	BRELAND, STEPHEN & ALLISON N.	238.88
8	4	BAEZ, NELSON (V) & MAGDA	5,170.30	156	16	MAPA-BAKSH, ALICIA	238.88	313	18	RICHARD, ADRIAN D & DEBRA R	238.88
8	7	DEUTSCHE BANK NATIONAL TRUST CO-TR	425.28	157	34	VALDES, EDGARDO & ALEXIS A	238.88	314	4	TITTLE, SCOTT	426.94
8	11	SAUNDERS, DANYELLE M & ODOM, JOAN S	240.63	159	23	DENTE,RALPH&ANTOINETTA	218.22	314	7	O'NEAL, ERIC & LORETTA	426.94
8	14	CINTRON, BRADLEY	243.96	160	3	COLAPIETRO, JAMES & TRACY	238.88	315	26	SUAREZ, EDWARD & LUZ M.	783.52
9	24	BROWN, SUZANNE P	238.88	165	6	BROOKS, WILLIAM R & ROCHELLE M	1,658.48	315	33	SIMKO, GEORGE AND JUDY	265.96
9	28	SCALERA, BRUCE W.	425.20	167	14	CONNOLLY, SHEILA	1,199.54	315	60.01	GRIFFIN, THOMAS E & MICHELE	424.26
10	7	OFFIONG, ANIEKAN E.	238.88	169	7	VASQUEZ RAMOS, NANCY	238.88	317	8	KOTELSKY,THOMAS J. & DARLENE A.	2,028.35
12	3	DULAC, RICHARD	239.26	169	18	RYAN, DIANE & ROBERT	3,069.95	319	1	LEIGHTON, ROBERTA D.	9,403.64
12	6	INGRAM,NAKIETIA & WILLIAMS, JERMAUL	238.88	170	22	BORSOS, MICHAEL G	238.88	322	2.01	NATT, SHELAH & FREEMAN, VELMON	238.88
12	18	ADAMS, SAMUEL O & ROSE	351.04	172	22	RIDDICK, LINWOOD & MILAGROS	3,127.47	324	4	GRATTA, TRACEY JOAN & THOMAS J	424.26
12	29	ROESCH, RANAE & JOHN R	7,076.22	173	2	SMITH, LAWRENCE W. & LAURA C.	238.88	327	5	BALKARAN, RAMGOOLAM & CHANDRAWATI	426.94
12	35	TRUONG, MYHANH	425.68	173	22	PHILLIPS, STEPHEN C	3,414.28	336	1.03	DAVIS, WILLIAM & ANGIE HUNTER	377.70
14	39	IACULLO LUCILLE	546.06	174	10	DOUGLAS, LOCKSLEY	238.88	337	13	RUIZ, JULIO C. & IRIS	455.71
15	26	MONROE, MICHAEL J. & JOAN M.	2,903.85	175	9	LIMERICK, GLASGOW A. & PATRICIA V.	238.88	338	3	ROSADO, ALEX & MICHELLE	403.41
16	26	CASSETT, CHANDA & MCCOY, CRAIG	426.94	175	14	GOODMAN, JEFFREY A	424.26	338	13	CABRERA, KARINA & RAMOS, SANDRA	425.68
16	31	LICCIARDONE,CAROLE A&DOMINICK&LOUIS	426.94	180	8	LOZADA, FRANCISCO, & DIAZ,BLANCA	238.63	343	8	DAZOS, DEAN J	240.54
18	10	JOHNSON, BRENDA D & WILLIAMS, DONNA	788.87	182	8	CALLEJAS, ANGEL & CRUZ, MYRNA G	425.68	347	8.07	DEANDREA, RICHARD J	112.22
20	4	FIORAVANTI, ADOLPH & JEAN	238.88	184	12	ALVA, MARVIN MONT	424.26	353	3.06	FASANO, LOUIS	1,232.37
20	7	TAKOUKA, TAG O.	425.20	186	4.02	PAULS, SAMUEL J	238.88	363	6	SPAYDER, DAVID E. & BETSY M.	7,639.80
21	2.06	WILSON, RICHARD D & MAUREEN B	2,617.07	188	41	FROSONI, MARK ANTHONY	238.88	372	5	CASTRO, ANGEL & CLAUDIA	417.24
24	18	WILLIS, RODNEY & SHEILA	2,746.09	188	63	HARRY-SCOTT,VICKY & SCOTT, DAVID	238.88	380	4.01	KRYSTOPIK, KENNETH & SUSAN	902.26
24	29	JOSEPH, DIOZY	240.54	189	4	HOFFLER, TANYA	424.26	380	5	KRYSTOPIK, KENNETH L & SUSAN E	5,396.43
24	38	GENTILE, ELLEN M. & ROBERT J.	424.26	192	2	WILLIAMS, DOROTHY	3,219.40	389	16	KRYSTOPIK,SUSAN	21,982.46
25	17	VETUSCHI,MATTHEW & TAMMY	235.01	192	4	MOORE, THOMAS T & EVELINE	4,117.92	390	1	ERRICKSON,F&C.C/O BORO AUTO WRECK.	22,231.97
26	2	MUHAMMAD,SABIR & CLARISE	426.94	193	12	MOORE, JAMES G. & SHARON D.	5,801.45	390	2	ERRICKSON,FRED & CAROL	439.76
32	1	SELLA, MICHAEL G. & KELLY A.	238.88	195	17	GOD'S LIFE CHRISTIAN CENTER	3,487.13	396	2.07	RITCHIE, ARNO & MARY L	238.88
32	6	GONCALVES, LESLIE A	426.94	199	24	GLINA, JANINA	1,505.90	396	2.11	ALEXA, DONALD & TERRY A.	160.32
34	10	YUILL, JOHN F & CATHERINE	3,480.65	199	26	LINCZYK, GLENN T	238.88	400	3	CONTRERAS, JORGE M	426.94
35	4	DAVIS, MELITA M.	3,374.08	200	8	GONZALEZ,FRANK & MARIA	425.68	404.02	27	KERTES, FRANK M.& L.	2,352.25
35	8	COUPLAND, RENEE & RONALD	146.76	200	16	NAZAROW, LYDIA (S)	151.94	406.02	1	TURNER,WAYNE &RAYCENE SMITH TURNER	238.88
37	9	DI PASQUALE, PHYLLIS	425.28	200	17	LEON, CARLOS T & CECILIA	426.94	406.03	12	KAMEL, FRANCES	425.68
37	12	ROMERO, ELMER M & REGINA B	425.75	201	3	TANZOLA, JOHN & KATHERINE M	6,118.67	406.03	18	WEEKS, TRENELL	425.68
38	3	JIMENEZ,MARGARITA& MOLLOGON,JARIO A	238.88	201	6	CHANDLER, JR., A. & PAYNE, K.	238.88	407	22.01	FALATO, TIGHE A. & DEBORAH K.	426.94
40	6	DE LOS SANTOS, GLAUCO	424.26	201	13	ZELIFF, MARK & JOANN	426.94	407	25	RUIZ, CARLOS & OFELIA	238.88
41	13	SUTTON,JEFFREY S. & SUSAN M.	425.68	202	7	DEUTSCHE BANK NATIONAL TRUST CO	238.88	407	41.01	BUTRICO, DAVID & VIRGINIA	238.88
46	13	VAN NAME, MARK & HARRIET	426.94	211	18	CARVALHO, SANDRA & SANTIAGO, MARIO	238.88	409	4	ANTAR REALTY LLC	1,160.93
46	26	KOZAK, JOHN & KAREN	426.94	213	15	FRY, DONALD & DOROTHY	2,377.87	414	1.02	KASCHAK,D.& KORLIZYN,T.& M (S)	3,003.08
50	2	HUNTER, ROBERT & ROBERTA C.	634.34	213	16	D & C INC	1,076.07	415	19	SUDEALL,PETER L & FEELEY-SUDEALL, V	426.94
54	4	SANCHEZ, ROSARIO B. & RENE	4,271.59	219	12	GRAY, HARLAN & ELIZABETH	425.75	420	16	KEDMENEK, STEPHEN J. & VICTORIA M.	426.94
56	13	SANCHEZ, RENE G & VIVIANA	238.88	222	24	BACH, ELIZABETH ANN	426.94	426	1	JDMT PARTNERS LLC	359.68
56	14	BLASEN, YOLANDA	1,690.25	223	11	FERRER,LUIS & ANA FERRER	426.94	427	5	PERRY,JR.,THOMAS C.& MARIA	1,653.15
56	24	RACITI, FRANK & DARLYNE	5,956.00	224	2	ANZALONE, VINCENZO & CONETTA	5,305.87	427	16	DOWLAT, JAIPERSAUD	1,562.14
58	20	JONES, DAVID A.	3,943.25	230	28	SCHMIDT, J B	2,343.83	428	5	CERVATI, LEO & RENATE	2,537.34
58	23	BEVERLEY, DENNIS & KIMBERLY	426.94	231	6	SONION,GINA & CHARLES	238.88	429	1	WEBER, MARION B	598.23
59	7	WERLEIN, CATHLEEN M.	2,841.60	231	17	NEWMAN,STEVEN R & LISA A	425.20	429	2	WEBER, MARION B	426.94
64	6	PENDER, NANCY	161.91	233	11	HOH, ANTONIA J.	379.90	431	6	BARRY, JAMES & LURLENE	238.88
65	8	KRAUS, ROBERT H & SEFEROGLU, HIRON	10,044.52	233	24	O'DONNELL, JOHN	4,958.08	437	6	GUERRA, INEZ	788.87
65	11	DABNEY,WILLIAM&HUGHES-DABNEY,JANINE	3,833.24	238	7	MALAVARCA, KATHYLENE M	425.68	438	3	SORIANO, NELSON A. & ANA F.	1,763.03
66	12	MEMON, RASHID AHMED	238.88	238	9	SOLOBOSKI, JOSEPH & KELLY	257.00	446	1.01	NEW ERA DEVELOPMENT, INC.	3,193.47
71	3	OYOLA, LUIS A & GISELLE E	337.63	242	11	SUTTON,DIANE & WILLIAM B.	426.94	447	5	ADA REALTY	5,606.10
73	1.01	PRETE,PETER & ROSEMARIE	425.91	244	16	GAGLIANO, ELIZABETH	426.94	449	6	A.A. TRUCK RENTING CORP.	13,723.71
74	24	NEALS, THEODORE H	1,671.15	249	41	ROMER, JOSEPH G. & SALLYANNE	2,275.33	449	8	A.A. TRUCK RENTING CORP.	4,422.04
75	7	CECCHETTINI, GINA M.	238.88	254	17.\C0001	PATEL, ASIT R & JAGRUTI	1,576.53	468	4	RICIA REALTY RENTAL GROUP LLC	3,006.54
77	5.01	MITLO, SR, SHAWN	7,150.60	254	18.\C0002	HUNTER, DARNELL JR.	1,891.40	472	3	4315 NEW BRUNSWICK AVE LLC	2,069.41
77	6	KARELEFSKY-BARCA,CELIA & BARCA,JOHN	426.94	254	40	OAK TREE REALTY HOLDINGS, LLC	3,998.40	480	1	NAKASH 200 HELEN STREET LLC	2,839.05
77	32.01	CARSON, STEVEN	425.20	254.01	5	GREENIDGE, OWEN D & DARLENE R	426.94	488	7	GOODWIN, ALICE (S)	4,469.34
82	4	MC CAULEY,BARBARA	426.94	254.03	4	LEO, STEVE	424.26	524	9	STELLAKIS, JOHN & GANIARIS, PETER	426.94
82	19	COCHRANE, BRIAN & LAURIAN	238.88	254.05	6	DEGROOT,MICHAEL & YVONNE	5,874.44	528	43.\C0224	GOVINDAVAJHALA, SUDHAKAR	233.43
91	44	BILAK, LISA	425.83	255	13.03	HARMICH RD.LLC	7,148.34	528	43.\C0336	HARISINGHANI,DILIP & HARRISON,ANITA	1,407.90
94	6	HALO AMERICA LLC	5,615.91	255	14	THE FISHBEIN FAMILY PARTNERSHIP	2,686.01	528	43.\C0413	BEDI, MANISH	238.88
94	30	ANNETTA, NANCY	238.88	258	4	H & F REALTY LLC	217.54	528	43.\C0436		







## SPHS Announces Rotary Students of the Month



Ashley Linick and Katherine Staynings with SPHS Assistant Principal Kelly Richkus.

South Plainfield High School Principal Dr. James Pedersen is pleased to announce the February Rotary Students of the Month.

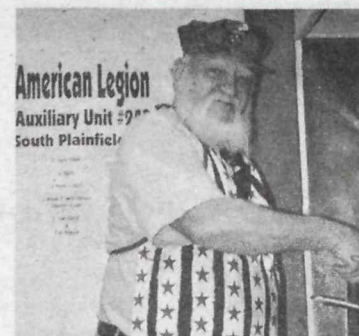
Each month, senior students are nominated for their volunteerism and

community service. The students are recognized at a monthly breakfast organized by the Edison Rotary Club and are eligible for its scholarship.

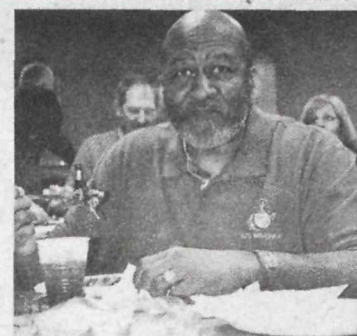
February students of the month are Ashley Linick and Katherine Staynings.

Ashley holds a 4.2 GPA while being actively involved in National Honor Society, Spanish Honor Society, student council, Peer Leaders and cheerleading. She participates in service projects that help raise money for local, national and worldwide charities. Ashley has also volunteered her time as a junior coach for cheerleaders at the Pop Warner level. She attended three leadership conferences throughout her high school career, including the inauguration of President Barack Obama. She was selected to attend the Elk's Leadership Conference in February.

Katherine serves on the executive board of the SPHS Help Darfur Now, is a member of the lacrosse team and volunteers with the local Christ United Methodist Church while maintaining a 3.8 GPA. Katherine has organized and participated in programs to raise awareness and funds for the relief of Darfurian refugees, FISH Program, CROP Walk for Hunger and Christmas Ministry for shut-ins. In addition to Katherine's volunteer work, she participated in the 2011 National Youth Church Conference at Purdue University and has been involved in dance for over 14 years.



Robert Hatton (left) 1st District Vice Commander for J.J. Gardner Detachment of Elizabeth, was kept busy in the kitchen. (Right) E. Lamar Mackson, commandant of J.J. Gardner Detachment, enjoys the meal.



## American Legion Hosts Marine Corps Dinner

By Patricia Abbott

The South Plainfield American Legion Post #243 on Oak Tree Road hosted a spaghetti dinner fundraiser on February 25. The event was sponsored by the J.J. Gardner Detachment of the Marine Corps League. Volunteers seated and served the more than 65 diners who attended. Detachment volunteers also cooked the meal. This was the first time the league sponsored a dinner at the American Legion.

Many members of the Marine Corps League from throughout the area were in attendance as evidenced by the many red jackets and shirts noting their affiliation with the league. Among those on hand were Dick

Frank, Marine Corps League and Borough Council member. Proceeds from the event were donated to a marine whose house burned down on December 24, 2011.

The Marine Corps League was organized by an act of Congress in 1937 as a national organization. In March 1947 a group of former marines in the Plainfield area organized a local charter group and formed a detachment named after Joseph J. Gardner, a Guadalcanal marine. The first meeting was held in March 1947 at the Park Hotel in Plainfield.

Any honorably discharged or active marine is welcome to join. The group is always seeking new members who have served or are currently serving in the Marine Corps.

Keep up with what's going on in your town... subscribe to the *Observer*, delivering the best of South Plainfield since 1997.

## LANDSCAPE SERVICES

Get the  
**Best Results**  
when you advertise  
your business weekly,  
and get the  
**Best Rates**  
we offer.

Call 908-668-0010.

### GRADUATE



#### LAWN CARE LAWN MAINTENANCE LANDSCAPE DESIGN

Mulch Beds • Pavers  
Top Soil • Stone  
Commercial - Residential  
FREE ESTIMATES  
(732) 548-0752  
gradlawncare@yahoo.com

### Silver Creek Landscaping

SOUTH PLAINFIELD

#### BRICK PAVERS • PATIOS & WALKS

• LANDSCAPE PLANTINGS  
• SHRUB & TREE PRUNING  
• HYDRO SEEDING & SOD  
• MULCH / STONE / TOPSOIL  
• RETAINING WALLS  
• RESIDENTIAL & COMMERCIAL  
- FREE ESTIMATES -

908-756-7272



Property Maintenance, LLC

Lawn Maintenance • Landscape Design  
Mulch • Top Soil • Clean Ups  
Power Washing • Driveway Sealing  
Snow Plowing

kbullapm@gmail.com 732.558.0356

## BUSINESS/PROFESSIONAL/SERVICES

### AUTO BODY

#### R&C AUTO BODY

Family Owned & Operated Since 1962  
Expert Color Matching  
24 Hour Towing  
Lifetime Repair Warranty

Lic. No. 00992A

908-757-1933

3330 Park Ave., South Plainfield

### AUTO REPAIR

#### C&R Auto

Mon-Fri 8-5  
Bill & Tom

#### Complete Foreign & Domestic • TIRES

Auto & Truck Repair • Tune Ups  
Oil Changes • Shocks & Suspension  
Air Conditioning • Exhaust Systems  
• Brakes & Front End

235 Hamilton Blvd. South Plainfield

908-754-8313

Fleet Service

### AUTO REPAIR & TOWING

#### MAJESTIC AUTO REPAIR & TOWING

Tired of over paying mechanics and going back for the same problem? Have it repaired correctly the first time!

**\$40 LOCAL TOWING**  
**20% OFF (labor) SENIOR CITIZEN DISCOUNT**  
**15% OFF (labor) SOUTH PLAINFIELD RESIDENTS**  
**15% OFF (labor) FLEET ACCOUNTS**

Specializing in every phase of automotive repair  
Master certified in domestic, European & Asian vehicles

Call LEE or IVAN to schedule your FREE diagnostic

SHOP (908)753-9555 TOWING (908)757-2057

165 West Street South Plainfield (Located off Durham Ave next to Restaurant Depot)

### CONSTRUCTION

References Available  
Fully Insured  
N.L. License #13VH00353600

#### HARTJE CONSTRUCTION COMPANY

Additions • Bathrooms • Kitchens  
• Decks • Windows • Siding

908-754-8921

### GUITAR LESSONS

#### GUITAR LESSONS

Beginner to Advanced

908-822-9702

All Styles

Kenny Campbell

www.kennymusician.com

### INCOME TAX PREPARATION

• Income Tax Preparation & Bookkeeping •

#### Martin H. Alpert

Registered IRS Tax Preparer  
Retired CPA - Quickbooks Pro Advisor

131 Waverly Place

South Plainfield, NJ

HANDICAP ACCESSIBLE

908-208-0586

### MASONRY & PAVING

#### MARK L. DI FRANCESCO PAVING • MASONRY

Driveways • Parking Lots • Seal Coating • Pavers • Wallstone  
Slate • Bluestone • Excavating • Foundations • Block Work  
Cultured Stone • Drainage • Water Proofing

3RD GENERATION IN BUSINESS

908-668-8434

### REAL ESTATE

#### Prudential New Jersey Properties

Cynthia "Guancione" Freund  
Licensed Real Estate Sales Associate



Cell 908-447-6980  
Bus 732-494-7677

3 Amboy Avenue  
Metuchen, NJ 08840

Cynthia.Freund@  
PrudentialNewJersey.com

#### Prudential New Jersey Properties®

Rose Marie Pelton  
REALTOR-ASSOCIATE  
South Plainfield Resident  
For Over 39 Years

908-753-4450 X121  
(732) 653-0322  
Fax 908-753-0136  
RosePelton@att.net

Prudential NJ Properties®

659 Mountain Boulevard, Watchung, NJ 07069



Rose Marie Pelton



#### Barbara Cirigliano

SRES, ASP, REALTOR

"A Proven Professional"  
Weichert's President's Club  
Resident of South Plainfield

Weichert  
Realtors

We Sell More  
Because We Do More

barbarac@weichert.com

(908) 917-9540 (cell)

(908) 561-5400 (office)

55 Stirling Road, Watchung, NJ 07069

### ROOFING

Quality Work At  
Unbeatable Prices  
Walter Podpora  
Roofing

• Gutters • Windows • Siding

(908) 730-9551

131 Delmore Ave.

South Plainfield, NJ 07080

Lic #13VH00534000



# County to Hold Household Hazardous Waste Drop-Off Day

The Middlesex County Division of Solid Waste Management is pleased to announce its Household Hazardous Waste Drop-Off Day scheduled for Sunday, March 18 at the Middlesex County College located at 2600 Woodbridge Ave. in Edison. Please use the Mill Road entrance. The event will take place in Parking Lot #2. The hours are 8 a.m. to 2 p.m.

Household hazardous wastes that are improperly disposed of are identified as a danger to children and animals, a potential cause of ground water and other environmental pollution and a potential threat to garbage collection crews.

"This is a great service that we can provide for our residents to ensure that we protect their safety and care for the environment," said Freeholder H. James Polos, chair of the county Public Safety and Health Committee. "I encourage residents who are beginning their spring cleaning to take advantage of this program."

Acceptable materials include, but are not limited to, pesticides/herbicides, flammable liquids, solvents, pool chemicals, used motor oil, oil filters, paints, batteries, anti-freeze, propane tanks, fluorescent light bulbs including compact fluorescent bulbs (no broken bulbs) and asbestos. Residents wishing

to bring asbestos must pre-register by calling the division, and can only bring up to a maximum of 500 pounds.

Materials not accepted at the drop-off day include alkaline batteries, tires, electronics, explosives/munitions, infectious/medical waste, household medications, appliances/furniture, unknown materials and empty containers. Residents with tires and electronics can contact the division for information regarding separate tire and electronics recycling programs.

The drop-off day is sponsored by the Middlesex County Board of Chosen Freeholders and conducted in cooperation with Middlesex County College. The event is open to residents of Middlesex County and is free of charge. Items should be brought in clearly marked containers.

"The Household Hazardous Waste Drop-off program is one of our most popular and successful programs that really makes a difference," said Freeholder Director Christopher D. Rafano.

For further information, call the Division of Solid Waste Management by calling (732) 745-4170, by emailing solidwaste@co.middlesex.nj.us or by visiting the following web site: www.co.middlesex.nj.us/planningboard/solidwaste.asp.

# CLASSIFIED

## LOCAL CLASSIFIEDS

### HOUSECLEANING

**HOUSECLEANING** - Reliable, experienced, good references. Call (908) 922-1531 or (732) 882-2823.

### FOUND

**FOUND SET OF KEYS**-On Puha St. Call (908) 226-0925.

## CLASSIFIED RATES:

\$15 for three lines; each additional line is \$1. 10% discount for 4 consecutive insertions. Call 908-668-0010.

### GARAGE/MOVING/ESTATE SALE ADS:

\$20 for 2 1/2 inch display ad

**DEADLINE FOR ALL ADS: MONDAY, 5PM**

## STATEWIDE CLASSIFIEDS

### ADOPTION

Are you pregnant? A childless married couple seeks to adopt. Financial security. Expenses paid. Call Christine and Norbert. Ask for Michelle/Adam. 1-800-790-5260.

Pregnant? Consider a loving, courageous adoption plan. FINANCIAL ASSISTANCE, free confidential help, choose from pre-approved families. Photos/updates available. Call Joy: 866-922-3678 or 914-939-1180. www.ForeverFamiliesThroughAdoption.org

Are you pregnant? A childless, happily married, couple seeks to adopt. Will be full-time mom/devoted dad. Financial security. Expenses paid. Shirley and Tony. 1-888-882-8290.

### ADULT COMMUNITIES/REAL ES.

WHITING/MANECSTER-55+ co-op, condo, fee simple. \$30,000 to \$400,000. Ocean County. Must call Irene Keddy 732-779-7621 1-800-677-4033 Crossroads Realty www.crestwoodvillage1234567

### ANNOUNCEMENTS

SOCIAL SECURITY DISABILITY BENEFITS. WIN or Pay Nothing! Start Your Application In Under 60 Seconds. Call Today! Contact Disability Group, Inc. Licensed Attorneys and BBB Accredited. Call 866-970-8473

NEED TO REACH MORE PEOPLE? Place your 25-word classified ad in over 145 NJ newspapers for \$520. Call Diane Trent at 609-406-0600 ext.24, email dtrent@njpa.org or visit www.njpa.org. (Nationwide placement available) Ask About our TRI-BUY package to reach NY, NJ and PA!

100 Percent Guaranteed Omaha Steaks - SAVE 65 percent on the Family Value Collection. NOW ONLY \$49.99 Plus 3 FREE GIFTS and right-to-the-door delivery in a reusable cooler. ORDER TODAY at 1-866-534-3352 or www.OmahaSteaks.com/value98, use code 45069YZ.

**Subscribe! 908-668-0010**

### AUTOS WANTED

DONATE YOUR CAR, TRUCK OR BOAT TO HERITAGE FOR THE BLIND. Free 3 Day Vacation, Tax Deductible, Free Towing, All Paperwork Taken Care Of. 888-438-1090

Honda, Toyota, Nissans, SUVs and Jeeps. All vehicles WANTED. 2001 and UP. Top Cash Paid. 24 hr. CASH Pick-up. Any condition. 732-496-1633

A CAR DONATION HELPS SICK KIDS! DONATE YOUR CAR TO SONGS OF LOVE. Featured on NBC (TODAY SHOW), CNN. Tax-deductible, all kinds of vehicles accepted. SONGSOFLove.ORG 888-909-SONG (7664)

### BUSINESS OPPORTUNITIES

ADVERTISE YOUR BUSINESS HERE! Place your 25 word Classified ad in over 145 newspapers throughout NJ for \$520. Contact Diane Trent 609-406-0600 ext. 24. www.njpa.org

START NOW! OPEN RED HOT DOLLAR, DOLLAR PLUS, MAILBOX, DISCOUNT PARTY DISCOUNT CLOTHING, TEEN STORE, FITNESS CENTER FROM \$51,900 WORLDWIDE! WWW.DRSS18.COM 1-800-518-3064.

### H.WANTED/TRUCK DRIVERS

Regional Drivers-\$2000 Sign On .437 Per Mile Home Weekly, Paid Holidays, Vacations and Safety Bonuses. CDL-A-HazMat 1 Yr OTR. 877-628-3748. www.DriveNCTrans.com

Drivers-FLEXIBLE HOMETIME! Up to \$.42/mile plus \$.02/mile quarterly safety bonus - Daily pay-New trucks-CDL-A, 3 months recent experience required. 800-414-9569. www.drive-knight.com

ATTN: Exp. Reefer Drivers: GREAT PAY/Freight Lanes from Presque Isle, ME. Boston-Leigh, PA. 1-800-277-0212 or www.primeinc.com

### HOME FOR SALE

DELAWARE! One Family Ranch Homes; Peaceful Setting, 55+ Community; Close to Shopping, Beach, Bay & I95; Low 100's; Low Taxes. Call 302-659-5800. www.bonayreshomes.com

### MISCELLANEOUS

ATTEND COLLEGE ONLINE FROM HOME. \*Medical, \*Business, \*Criminal Justice, \*Hospitality. Job placement assistance. Computer available. Financial Aid if qualified. SCHEV certified. Call 888-220-5975 www.CenturaOnline.com

DISH Network. Starting at \$19.99/month PLUS 30 Premium Movie Channels. FREE for 3 Months! SAVE! & Ask About SAME DAY Installation! CALL - 1-866-944-6135

NEED TO REACH THE PRESS? Send us your press release and we will do the rest! Fee. Call Diane Trent at 609-406-0600 ext.24,email dtrent@njpa.org or visit www.njpa.org.

Reach over 1.4 Million Households! Place your 2x2 Display Ad in over 125 NJ weekly newspapers for ONLY \$1300. Call Diane Trent at 609-406-0600 ext.24,email dtrent@njpa.org or visit www.njpa.org. (Nationwide placement available) Ask About our TRI-BUY package to reach NY, NJ and PA!

AIRLINES ARE HIRING. Train for hands on Aviation Career. FAA approved program. Financial aid if qualified. Job placement assistance. CALL Aviation Institute of Maintenance. 877-564-4204

### PUBLIC NOTICES

www.njpublicnotices.com - Subscribe to receive automatic notices: sheriff sales, foreclosures, RFP bids for schools, town meetings, variances, etc.

### WANTED

BUYING ALL Gold and Silver COINS FOR CASH! Also Stamps and Paper Money, Entire Collections, Estates. Travel to your home. Call Marc-Northern NJ 1-800-488-4175

### WATERFRONT PROPERTIES

WATERFRONT LOTS Fantastic Prices \$49,500.00. 10 Lot subdivision. Eastern Shore Virginia Navigable to Chesapeake Bay; Paved roads, Landscaped. WON'T LAST! Ask for Hunting Creek; (443)614-8793.

## LANDSCAPE SERVICES

**Regan LAWN CARE & Landscaping**

For all your lawncare needs:

- Lawn Maintenance
- Clean-ups Spring/Fall
- Shrub Trimming
- Planting
- Lawn Renovation
- Mulch/Topsoil

**2 FREE LAWN CUTS**

Senior Discounts Available

With Signed Full Season Contract (New Customers Only)

Owner Operated Free Estimates:

**732.424.7332**

## BUSINESS/PROFESSIONAL/SERVICES

### CASINO GAMBLING INSTRUCTION

### LEARN WHAT THE CASINOS WON'T TELL YOU

Casino gambling instruction performed at your location by a former professional gambler and author.

I teach my clients how to reduce the casino's edge to the lowest possible margin by using mathematically-correct strategies, regardless of your mathematical ability.

YOU MUST BE 21 YEARS OF AGE OR OLDER. CALL OR GO TO MY WEBSITE FOR MORE INFORMATION.

GREG HEIM • 908-405-6408

www.gamblingtutor4000.com

### CARPET / FLOORING

Carpet \* Area Rugs \* Tile \* Hardwood \* Laminate \* Linoleum

Residential & Commercial

"We'll Bring Our Mobile Store to your Front Door"

**MY WAY CARPET .com**  
**877-MY WAY CARPET**

MyWayCarpet.com **AND FLOORING!** 1-877-699-2922 1-908-757-3470

Repairs \* Restretching \* Binding \* Custom Tile \* Sanding and Refinishing

www.Fine-Ants-Sing.com 0% No interest, No payments for 1 year

### ELECTRICIAN

**On Time Electrical Contractor LLC**

Residential • Industrial • Commercial

No Job Too Small



908-451-3313 On Call 24 hrs.

Fully Insured & Bonded NJ Lic #8854

### MASONRY

### PLUMBING/HEATING

### POOLS

**WAYNE P. SCOTT MASONRY**

Piscataway Family Business 56 Years  
**FREE ESTIMATES**  
Steps • Patios • Walks  
Foundations • Repairs

**10% Spring Discounts**  
NJ State Lic # 13VH00096100  
**732-968-5230**

**MIKE OZERANSKY PLUMBING & HEATING**

South Plainfield, NJ

- Hot Water Heaters
- Additions/Repairs
- Gas Conversions
- New Homes
- Free Estimates

Call 908-222-3444

Fully Insured/Bonded



NJ State Lic #6461

License #8741



**Professional Plumbing, Heating & Cooling, Inc.**

(908) 561-1941

South Plainfield, NJ

**FRANK MCCARTHY**

*Celebrating 25 Years in Business*

**McCarthy Contractors**  
**Complete Pool Maintenance & Repair**

Pools~Ponds~Water Features

We sell & install safety covers and do liner changes

**SALES AND SERVICE**  
Blaise McCarthy

Member of NSPA • 20 Years Exp.

Fully Licensed & Insured • SOUTH PLAINFIELD

**Schedule your pool closing now! (908) 756-3120**

### ROOFING

### TREE SERVICE

### TREE/SHRUB

### WINDOWS & MORE

**CELEBRATING 50 YEARS**  
Since 1960

**J.T. PENYAK ROOFING**

908-753-4222  
www.penyakroofing.com

3571 KENNEDY ROAD  
SO. PLAINFIELD, NJ 07080

**SHINE**

**Complete Tree Service**  
Landscaping  
Lawn Care  
Firewood

Free Estimates • Fully Insured  
**24 Hour Emergency Service**



We Accept Credit Cards!  
www.ShineLandTree.com

(908) 822-8808

**DISCH TREE EXPERTS**

MEMBER



120 FT. CRANE RENTAL

**Professional Tree & Shrub Care**

Plant • Feed • Prune • Spray  
Year Round Tree Program  
Land Clearing • Firewood  
Tree & Stump Removal

Fully Insured, Free Estimates

**24 HR EMERGENCY SERVICE**

**BILL DISCH • PRESIDENT**

(732)968-5830 • (732)803-7086 (cell)

**MW**

**FREDERICKSON**

**WINDOWS PLUS**

**RESIDENTIAL SERVICES**

- ◆ VINYL SIDING
- ◆ WINDOWS & DOORS
- ◆ SEAMLESS GUTTERS
- ◆ GUTTER GUARDS
- ◆ CUSTOM DECKS

(732) 213-8295 • (866) 355-9393



## Free Financial Aid Workshops at MCC

Five free workshops on the financial aid process in New Jersey will be held at Middlesex County College (MCC) this spring. They will take place at the college's main Edison campus, New Brunswick Center and the Perth Amboy Center.

"Applying for financial aid for college can sometimes be a confusing

process," said Marla Brinson, dean of enrollment and student support services at MCC. "These workshops are designed to help high school students become familiar with the procedure, promote parental involvement in the college application process, and help students apply for financial aid in a timely manner."

Students should bring a copy of their own and their parents' 2011 federal income tax return, including all pages and schedules.

The workshops are funded by a State of New Jersey Higher Education Student Assistance Authority grant.

Bilingual assistance is provided at all locations. The sessions will take place at Perth Amboy Center, Saturday, March 24 and April 21 at 9 a.m.; New Brunswick Center, Wednesday, April 4 and 18 at 6 p.m.; and the Edison Campus, Saturday, April 14 at 9 a.m.

To register for a workshop, please call the location that is convenient for you: New Brunswick (732) 745-8866; Perth Amboy (732) 324-0700; or Edison (732) 906-3450.

## SPHS Business Ed Teacher Receives Tenure Certificate

By Libby Barsky

South Plainfield High School teacher Susan McAndrews received tenure at the February Board of Education meeting. She teaches finance, accounting and business law in the high school Business Department.

McAndrews, is a Montclair State University graduate, taught for 14 years in Cranford and Wallington School District when Interim Assistant Superintendent of Schools, Dr. Frank Cocchiola, was the superintendent there.

She and her husband owned Gerard Steel Corporation in the Harris Steel complex in South Plainfield. After her husband's death, she returned to teaching at the high school.

Another addition to the Business Department will be a Cooperative Education program, which was approved by the Board of Education to be added to the high school's curriculum for the 2012/2013 school year. The program is part of the State Plan for Career and Technical Education whereby the career education teacher prepares students to be ready for job placement.

Former teacher Dee Falato retired in 2010 after 23 years as the Career Education teacher. Since then, the district has not offered the class. The board did not announce who the new teacher will be.

**HOMETOWN HEROS**  
**SEND-A-PLATTER**

We will send to any home a beautifully arranged and wrapped Assorted Sandwich Tray with two of our homemade salads-Any Day-Any Time. **\$49.95** Serves 8-10

**908-755-HERO (4376)**  
www.hometownherosdeli.com

## Obituaries

### Margaret Mary (Speno) Anderson, 90

Margaret Mary (Speno) Anderson died on Thursday, March 8 at Genesis Eldercare-The Woodlands in Plainfield.

Born in Auburn, N.Y., Margaret was a former resident of Berkeley Heights and Scotch Plains prior to settling in Oxford in the late 1970s.

She had assisted her husband for many years at their business, E. Anderson Lawn Mower Service Shop of Scotch Plains.

She enjoyed knitting, working on ceramics, spending time with her family and, more importantly, spending time with her grandchildren.

Her husband, Eugene, died October 1, 2003.

Margaret leaves behind three sons, Allen and wife Cathy of Piscataway, Brian and wife Patricia of South Plainfield and Philip of Scotch Plains. She will be missed by four grandchildren, Allison and husband Eric Dobos and their son Kyle, Mark and wife Yulia Anderson and their son Sergio; Dawn Anderson and longtime companion David Summers and Paul Anderson. Also surviving is a sister, Carolyn McKinley of Washington State.

Funeral services were held at McCriskin-Gustafson Home For Funerals.

In lieu of flowers, donations may be made to the Karen Ann Quinlan Memorial Foundation, 99 Sparta Ave., Newton, N.J. 07860, in support of their butterfly release.

### Antoinette Recifo, 97

Antoinette Recifo of South Plainfield passed away on Sunday, March 11 at Jersey Shore University Medical Center.

Born in Brooklyn on November 29, 1914 to Louis and Bella D'Amico, she lived in New York City prior to moving to South Plainfield in 1957.

Mrs. Recifo was a homemaker.

She was predeceased by her husband, Frank J. Recifo, Sr., in 1974

and also by five siblings.

Antoinette is survived by three sons, Charles Recifo of South Plainfield, Louis Recifo of Somerset and Frank J. Recifo, Jr. of Neptune; two daughters, Rose Vichman of Cocoa, Fla. and Elizabeth Cortazzo of Edison. She is also survived by seven grandchildren and eight great-grandchildren.

Funeral services were held at South Plainfield Funeral Home.

In lieu of flowers, donations may be sent in her honor to St. Jude Children's Research Hospital, 501 St. Jude Place, Memphis, Tenn. 38105.

### Roman Kravetsky, 88

Roman Kravetsky, beloved husband, father, grandfather, brother and uncle, died peacefully on Saturday, March 3.

A resident of South Plainfield for 86 years, Roman moved to Jackson, Wyo. to be near several of his loving children and grandchildren.

Roman, a decorated World War II veteran, served in the U.S. Army and earned two Bronze Star Medals and the Purple Heart. Upon returning from the war, he worked as a truck driver for Moore's Trucking in Piscataway until his retirement.

Roman was predeceased by his wife, Mary, and by a daughter, Marianne (Ken) VanOstenbridge.

Mr. Kravetsky will be sadly missed by three sons, Roman, Stanley (Lisa) and Joseph (Janet); two daughters, Frances (Pat) Dalugdug and Romana (Allan) Morton; eight grandchildren, Michelle, James, Joseph, Jacob, Matthew, Jessica, Luke and Stephen; two great-grandchildren, Jayden and Trace; a sister, Frances (Sylvester) Zavitski; and six brothers, Stanley, Alfred, Charles, Frederick, Edmund and Alfonse.

At his request, a private funeral service will be held in Jackson, Wyo.



Roman Kravetsky



Volunteers from the Sisterhood of Congregation Beth Israel in Scotch Plains with prepared gift boxes with groggers, treats and traditional hamentashen cookies delivered to the entire congregation before the Jewish holiday of Purim on February 26. Pounds of hamentashen were also donated to Jewish and non-Jewish residents of AristaCare at Cedar Oaks, a nursing home in South Plainfield, through the Jewish Federation's Chaplaincy Program. Pictured with Purim gift boxes are (from left) Audrey Grossman and Robin Sabony, co-chairs of Congregation Beth Israel's Purim outreach project.

**KAPE**  
INSURANCE AGENCY

Your neighborhood agent since 1961

**510 Hamilton Blvd.**  
**So. Plainfield, NJ 07080**

**908-757-6666 FAX 908-561-0032**  
**www.kapeinsurance.com**

**Business - Auto - Home**

**It's a Winner!**

Charlie and Debbie Kurland of Hometown Heros deliver dinner to Junior Journalist winner Courtney Marko pictured with mom Kristy and cousin Conner.

## LEGAL NOTICES

### LEGAL NOTICE

#### MIDDLESEX COUNTY, NEW JERSEY

Take notice that in accordance with N.J.S.A. 39:4-56.6, application has been made to the Chief Administrator of the Motor Vehicle Commission, Trenton, New Jersey, to receive title papers authorizing the sale for a 2000 Mercedes, VIN/Identification Number 4JGAB54E2YA166555. Objections, if any, should be made immediately in writing to the Chief Administrator of the Motor Vehicle Commission, Special Title Unit, P.O. Box 017, Trenton, New Jersey, 08666-0017.

\$80.00

March 16, 23, 30, 2012

### LEGAL NOTICE

#### MIDDLESEX COUNTY, NEW JERSEY

Take notice that in accordance with N.J.S.A. 39:4-56.6, application has been made to the Chief Administrator of the Motor Vehicle Commission, Trenton, New Jersey, to receive title papers authorizing the sale for a 1993 Nissan, VIN/Identification Number JNIEB31F4PU503976. Objections, if any, should be made immediately in writing to the Chief Administrator of the Motor Vehicle Commission, Special Title Unit, P.O. Box 017, Trenton, New Jersey, 08666-0017.

\$80.00

March 16, 23, 30, 2012

### LEGAL NOTICE

#### BOROUGH OF SOUTH PLAINFIELD COUNTY OF MIDDLESEX, NEW JERSEY CONTRACTS AWARDED FOR PROFESSIONAL SERVICES

Notice is hereby given that pursuant to the Local Public Contracts Law of New Jersey, (N.J.S.A. 40A:11-1 et seq) the awarding of the contracts for "Professional Services" without competitive bidding must be publicly advertised within 10 days of the date approved. A Professional Service contract for Appraisal Services was approved at the March 5, 2012 public meeting of the South Plainfield Mayor and Council. The firm of Sterling DiSanto & Associates, 145 West End Ave, PO Box 977, Somerville, NJ 08876 was appointed for 2012.

Joann L. Graf, RMC  
Municipal Clerk

\$29.45

March 16, 2012

Search public notices  
on the web:  
[www.publicnoticeads.com](http://www.publicnoticeads.com)



2456 Plainfield Avenue  
South Plainfield, NJ 07080  
(908) 756-2800  
Michael L. Castoral, Manager, NJ Lic. No. 4305  
[www.southplainfieldfuneralhome.com](http://www.southplainfieldfuneralhome.com)



"OUR FAMILY CARING  
FOR YOUR FAMILY  
SINCE 1949"

- Pre-planning
- Bereavement Support Group
- Proud member of Veterans & Family
- Memorial Care

www.mccriskinfuneralhome.com

**McCriskin-Gustafson**  
"An Independent, Family Owned  
& Operated Funeral Home"

**HOME FOR FUNERALS, LLC**

**(908) 561-8000**  
2425 Plainfield Ave., South Plainfield, NJ 07080

**PRE ARRANGEMENTS • S/S MEDICAID PROTECTION • CREMATION SERVICES**  
**GREEN BURIALS**

James A. Gustafson, Pres./Mgr. • N.J. Lic. No. 4205  
Richard W. McCriskin II, Vice-Pres./Dir. • N.J. Lic. No. 4564

Richard W. McCriskin, Dir. • N.J. Lic. No. 3147  
William C. McCriskin, Dir. • N.J. Lic. No. 3382