

**Next Week:**

**Labor Day  
Parade**

*Don't miss a beat in South Plainfield... subscribe! Call 908-668-0010*

**SOUTH PLAINFIELD PUBLIC LIBRARY**

C026\*\*\*\*CR LOT0001A\*\*C026 19 1\*\*\*  
SP PUBLIC LIBRARY  
2484 PLAINFIELD AVE  
S PLAINFIELD, NJ 07080-3531

# South Plainfield **Observer**

**VOL. 15, NO. 2**

Member New Jersey Press Association

**60 CENTS**

**SEPTEMBER 9, 2011**

## **9-11 MEMORIAL SERVICE**

*South Plainfield Town Observance*

*Monument Park – Sunday, September 11 – 12:45 pm*



*Community Event*

*Honoring the innocent lives lost on that tragic day*

**9 – 11 – 01**





**Want to stay informed about the business of your Council and BOE?**

**FYI**

**Borough Council & BOE**

Council meetings air on Comcast Channel 96 Mondays at 7 p.m. BOE meetings air on Thursdays at 7 p.m.

To purchase a complete copy of a council or BOE meeting, contact the Observer. (Check Comcast community bulletin board for last minute time changes.)

**council meetings**

Meets twice a month on Mondays, \*except where noted.  
Borough Hall Council Chambers • Questions? 908-226-7605

**Agenda Meeting**  
September 19  
October 3

**Public Meeting**  
September 19  
October 3

All Agenda Meetings begin at 7 p.m. followed immediately by the Public Meeting, unless otherwise noted. Meetings of the Governing Body are held in accordance with the N.J. Open Public Meetings Act (N.J.S.A. 10:4-6 et seq.) in the Council Chambers at 2480 Plainfield Ave.

**planning board**

Meets second and fourth Tuesday of the month, \*except where noted.  
Borough Hall Council Chambers, 7 p.m. Questions? 908-226-7641  
Sept. 13, Sept. 27, Oct. 11, 25, Nov. 1, \* Dec. 13\*

**zoning board of adjustment**

Meets second and fourth Thursday of the month, \*except where noted.  
Borough Hall Council Chambers, 7 p.m. Questions? 908-226-7641  
Sept. 22, Oct. 13, Oct. 27, Nov. 10\*, Dec. 8\*

**board of education**

Meets Wednesdays at Roosevelt Administration Gymnasium on Jackson Ave.  
Committee of the Whole meetings (begin at 6:00 p.m.)  
Sept. 14, Oct. 12, Nov. 9, Dec. 14, Jan. 11, Feb. 8, March 14 and April 4.  
Regular Public Meeting (begin at 7:30 p.m.) Sept. 21, Oct. 19, Nov. 16, Dec. 21, Jan. 18, Feb. 15, March 21 and April 11.

**BOE curriculum/technology/student activities**

Meets once a month on Wednesdays at 4 p.m. in 2nd floor conference room,  
Roosevelt Administration Building on Jackson Ave.

**BOE buildings & grounds**

Meets second Monday of the month at 7 p.m., 2nd floor conference room,  
Roosevelt Administration Building

**cultural arts commission**

Meets the third Tuesday of the month at the PAL at 7:30 p.m.  
Sept. 20, Oct. 18, Nov. 15, Dec. 20

**library board of trustees**

Meets once a month on the second Tuesday, at the library at 7 p.m.  
Sept. 13, Oct. 11, Nov. 8, Dec. 13

**recreation commission**

Meets once a month on the second Tuesday of the month, except July and August  
PAL Building, Maple Ave. 7 p.m. Questions? 908-226-7716  
Sept. 13, Oct. 11, Nov. 8, Dec. 13

**taxpayers advisory group**

The Taxpayers Advisory Group (TAG) meets the fourth Tuesday of every month at  
Borough Hall, 2480 Plainfield Ave. at 7 p.m. Questions? 908-769-0786.

**site plans sub-committee**

Meets once a month on the third Tuesday of the month, 7 p.m.  
Sept. 20, Oct. 18, Nov. 15, Dec. 20

**environmental commission**

Meets once a month (second Wednesday) Borough Hall Conference Room, 8 p.m.  
Questions? 908-226-7621

**business advisory group**

Meets once a month (first Wednesday) Borough Hall Council Chambers, 5 p.m.

**ad hoc alternative truck route committee**

To be announced. 7:30 p.m. in the Senior Center Questions? 908-226-7605

# In My Opinion

Opinions expressed in this column are not necessarily those of the publisher, nor do we guarantee accuracy.

Dear Editor,

As the chair of the committee working on the memorial ceremony honoring the tenth anniversary of 9/11, I'd like to invite everyone to our event on Sunday in Monument Park.

The ceremony will begin at 12:45 p.m., and at 1 p.m. South Plainfield will join communities across the nation when sirens are sounded by our emergency-service personnel to honor the lives that were taken on that day in September 10 years ago.

The ceremony will include several officials from our area, and just last week I was notified that Lieutenant Governor Kim Guadagno has accepted our invitation from the many she received and will come to South Plainfield to mark the tenth anniversary of this tragedy.

Many of the volunteer groups in town have joined with us to make this a memorable and meaningful day of reflection. I hope that many of you will be able to attend.

**VERY TRULY YOURS,  
COUNCILMAN ALEX BARLETTA**

To the Editor:

I wish to take a moment to acknowledge some outstanding individuals during this time of transition. The first person I want to talk about is Al Czech. I have had the pleasure of meeting Mr. Czech as my athletic director many years ago while I was a student athlete at South Plainfield High School. He was full of energy and truly cared about all of his athletes and all of the sports. As time went on, he became the principal of Kennedy School and helped the students to flourish there. His energy and kindness became legendary. I was very fortunate to then work as a teacher under Mr. Czech at the Middle School. I was able to learn a great many things from him that helped me improve my teaching in the classroom, my coaching in sports, and gave me great insight into becoming an administrator. Then Mr. Czech brought his boundless energy and creativity to the students, parents and staff of Riley School. He now has come full circle and has returned to the athletic director position to help in a time of need. This was not easy,

but he was comforted in the fact that many capable administrators, whom he has worked closely with over the years, were willing to fill his seat.

Mr. Czech left very large shoes to fill. To fill that void, and to the blessing of Riley School, Leo Whalen has committed to becoming the principal at Riley. Mr. Whalen comes with years of educational experience and know-how. He has been with our district over eight years. His passion for education and his love of children will serve Riley students, parents and staff extremely well.

With Riley School in very capable hands, a void at Grant School had been created. It was with great sadness and disappointment that the staff and parents must say goodbye to Mr. Whalen. A vacancy was created, but not easily filled. The need of an experienced administrator who knows the district and has worked at various levels would be a top priority. The parents and staff have extremely high expectations, as they should.

Fortunately someone else has decided to step up and fill that void. It is with great enthusiasm that Grant School welcomes Mrs. Ellen Decker-Lorys, another outstanding administrator who has the energy, passion and integrity that Grant School deserves. I personally am very excited to partner with Mrs. Decker-Lorys to keep Grant School moving forward. Mr. Whalen has done great things for Grant School, and I am confident that she will continue his hard work and devotion in a positive direction.

Sadness now falls upon the staff, students and parents of Franklin School. With a staff as dedicated as any other staff to the students and parents of South Plainfield, Franklin School deserves someone with experience in our district. Who will fill that void as principal? It will not be easy to replace someone as dedicated to her job as Mrs. Decker-Lorys. I feel that no better candidate exists than Ralph Errico. We have numerous other very capable administrators, even current teachers who have their certification, but Mr. Errico has proven himself over the last six years as an assistant principal at the high school. With three excellent administrators, Mrs.

**Submit Your Letters to the Editor**

Send your letters to South Plainfield Observer, 1110 Hamilton Blvd., Suite 1B, South Plainfield, NJ 07080, or fax to 908-668-8819, or via email: spobserver@comcast.net. **Deadline is Monday, 5 p.m.** Letters must be accompanied by a name and telephone number for verification. Limit letters to no more than 200 words. We reserve the right to refuse a letter, to edit for clarity or length, and to limit the number of letters submitted on the same subject. Submission is not a guarantee of publication. We do not accept anonymous letters. Letters are strictly opinion.

Kelly Richkus, Mr. Joe Cirigliano and Dr. James Pederson and many very capable teachers ready to become administrators, the high school will be left in good hands.

Thank you for your time. May God bless our entire community and all of her civil servants, who work tirelessly without pay, in hopes that our children and citizens will continue to lead the way into the 21st century.

**ROBERT RICHKUS,  
ASSISTANT PRINCIPAL  
GRANT SCHOOL**

To the Editor:

To ensure America never forgets the price that terrorism exacted in the 9/11 attacks, the U.S. Senate recently approved legislation that asks all Americans to join together in a national Moment of Remembrance on September 11 and I am glad that so many New Jersey communities have agreed to join our effort.

For one minute, everyone in our country should stop and remember the victims of the worst terrorist attack on American soil.

The Moment of Remembrance will occur at the same time across the country: 1 p.m. Eastern Daylight Time, noon in the central time zone, 11 a.m. in the mountain zone and 10 a.m. Pacific Daylight Time.

Governments and businesses, churches and railways, fire and police departments and others are called on to ring bells and sound sirens as we observe this Moment of Remembrance. During these 60 seconds, the only sounds heard across our country should be this patriotic chorus as we remember the victims and confirm our determination to

(Continued on page 10)

**South Plainfield Observer**

The South Plainfield Observer is published weekly on Fridays by G&G Graphics Inc.

How to Reach Us



1110 Hamilton Boulevard, Suite 1B, South Plainfield, NJ 07080  
Ph: 908-668-0010 • Fax: 908-668-8819  
Email: spobserver@comcast.net  
www.spobserver.com

**EDITORIAL**  
908-668-0010

**CIRCULATION**  
To subscribe to the Observer  
call (908) 668-0010

**ADVERTISING**  
Display (908) 668-0010  
Classified (908) 668-1258

Publisher/Editor-in-Chief..... Nancy Grennier  
Associate Publisher..... Wayne Grennier  
Art Director/Associate Editor..... Susan Kaneps  
Staff Writer/Photographer..... Patricia Abbott  
Staff Writer..... Libby Barksy  
Editorial Assistants.. Jane Dornick, Jean Fultz  
Production Assistants..... Barbara Smith,  
Kelly Stashko,  
Contributing Photographers..... Louis Mormile  
Don Hunsinger  
Advertising Sales..... Jane Dornick, Jean Fultz  
Roxanne Cortese

The South Plainfield Observer (U.S.P.S. 018253) is published weekly, except Thanksgiving week. Second class postage paid at South Plainfield, New Jersey 07080-9998. Postmaster: Forward change of address orders to G&G Graphics Inc. 1110 Hamilton Blvd., Suite 1B, South Plainfield, NJ 07080-2004. Subscription rates \$29.95/year in South Plainfield; \$34.95 year out of town.

**SUBMIT YOUR ARTICLES**

We encourage the submission of stories and photos. To have an article published: Type (double spaced) the article and mail, email or fax. Include name, address and telephone number. **Deadline for submission is Monday, 5 p.m.**

**LETTERS TO THE EDITOR**

Submit letters to the editor by mail, email or fax. Letters should not exceed 200 words. We reserve the right to edit for clarity or length. Letters must include name and phone number, for verification.

To comment on the content or to suggest a story idea, contact the editor at (908) 668-0010.

The publisher is not responsible for typographical errors.

**For ALL Your Pest Control Needs!**

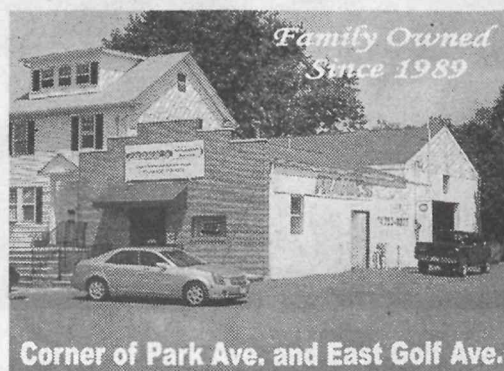


Termites • Bed Bugs • Ants  
Bees / Wasps • Cockroaches  
Raccoons • Mice  
**AND MORE!**

Chris Piazza  
732-207-3012

email: chris@onthespotpestcontrol.com

**www.OnTheSpotPestControl.com**



Corner of Park Ave. and East Golf Ave.

**1st Time Customers receive  
\$5 off on a Lube, Oil, and  
Filter Service or \$20 off any  
service over \$100.00**

**FRANK'S**  
1521 Park Avenue  
South Plainfield  
**franksautomotiveservice.com**

## Ask Your Neighbor...

Where to go for a job done right.

"The past 22 years spent helping our neighbors with their cars, has taught us a few things about who's the boss." We offer a full service automotive repair facility based here in our community and answerable to you. Not some corporate office somewhere. Give us a call. We think you'll like the way we do things!

**We're proud to guarantee our work in writing for  
18 Months or 18,000 miles.**

**Automotive Service**  
**908-753-0277**

**BRING IN THIS AD & GET  
ONE DOZEN  
BAGELS \$5  
FOR ONLY \$5**  
Wow!  
908-222-4010  
**Designer  
Bagels & Deli**  
Golden Acres Shopping Center  
692 Oak Tree Ave., S. Plainfield





The South Plainfield Historical Society held the annual quilt raffle at the Labor Day Parade. Charlie Kostner helps the winner, Shirley Doguski, display the quilt.

## Franklin School Principal Moves to Grant School

Libby Barsky

Long time fifth grade teacher, Ellen Decker-Lorys, is now the principal of Grant School, which houses all the fifth and sixth grades in the district. Decker-Lorys, who has been principal of Franklin Elementary for four years, replaces former Grant School principal Leo Whalen who transferred to Riley School when Principal Al Czech was named athletic director in July.

After graduating from The College of New Jersey in 1984, Decker-Lorys began her career as a fifth grade teacher at Roosevelt School, and she taught there for 18 years (teaching

fourth grade one year) until 2003. From 1986 to 2003 she was the school coordinator of the three-day, two-night environmental studies trip to the New Jersey School of Conservation (in Stokes State Forest).

After receiving a master of arts degree with honors in educational administration and supervision in 2006, Decker-Lorys continued her career as vice principal of the middle school and then received a certificate of tenure as principal of Franklin School in 2009.

Ann Smith, secretary at Franklin School, endorsed her boss by saying, "She's a wonderful person," and added, "This will be Franklin School's loss."

## Fall II Classes at Middlesex County College Begin September 26

It's not too late to start college. At Middlesex County College, a special "Fall II" program of accelerated courses begins September 26. Courses are offered day, evening, and through the internet.

"At Middlesex, we're here to help you succeed," said Aretha Watson, director of admissions and assistant dean of enrollment and student support

services. "We know you have a busy schedule so we offer flexible programs, with two separate Fall terms; we offer the traditional 15-week semester, as well as a shorter term for select classes. This is the perfect opportunity to take a class in an area that interests you, or to start your college career. We have classes offered at our Edison campus, the New Brunswick and Perth Amboy

## NEWS FROM THE LIBRARY BOARD OF TRUSTEES

### Library Director Announces Retirement

By Libby Barsky

Sunnie Randolph, director of the South Plainfield Public Library, announced her intention to retire on March 31, 2012 at the August 16 meeting of the Library Board of Trustees.

After announcing the date of her departure, Randolph spoke of the need to organize and preserve over 50 years of library board reports, board meetings and payroll records according to state directives. President Marty Tannenbaum of Innovative Document Imaging LLC of East Brunswick, a company founded in 2001 and specializing in digital conversion of paper documents and bound materials, prepared a proposal to digitize 56,000 pages of library documents, at a cost of \$7,920. Because there are many requests for information from past editions of the *South Plainfield Observer*, the IDI proposal also included a separate estimate to digitize the past 10 years of the *South Plainfield Observer* at a cost of \$3,750.

The board is expected to vote on the proposal at its next meeting.

Library Board Trustee Robert Bengivenga, head of the buildings and grounds committee, reported on the status of leasing a portion of Walgreen's for future library space. Bengivenga said that the negotiations were stalled with Walgreen's Corporate. According to Bengivenga, the corporation is still deciding how large of a space they want to retain of their present site.

Bengivenga asked the board to have architect Bob Longo, as well as

Joe DeAndrea, submit bids on plans for the library in the leased Walgreen's space.

Noting that librarian's pay has failed to keep up with inflation and its increases have occurred at a slower pace than the salaries earned by teachers and other professionals, the New Jersey Library Association has recommended a minimum/maximum salary

guideline based on the population the district serves. In an area where the population is between 15,000 to 49,999, the NJLA guidelines recommends a maximum salary for the library director at \$125,000. However not all members of the Board agreed to follow that guideline and voted to reduce the amount of the maximum salary for the director to \$110,000.

## Town-Wide Curbside Pickup Schedule

There will be a borough-wide storm cleanup beginning September 12. Heavily impacted flood areas such as New Market Ave will be picked up prior to the start of District 1. This cleanup will replace the previously scheduled fall bulk-pickup. The storm cleanup will take place over seven weeks. Corresponding brochures will be mailed shortly.

Week 1 begins September 12th for District 1  
Week 2 begins September 19th for District 2  
Week 3 begins September 26th for District 3  
Week 4 begins October 3rd for District 4  
Week 5 begins October 17th for District 5

## Recycle Your Documents at Paper Shredding Event

Residents will have the opportunity to recycle old documents and confidential files safely and securely. Come to the mobile paper shredding event for all Middlesex County residents on Saturday, Oct. 1. The event will take place from 9 a.m. to 12 p.m. (or when the shredding truck is filled-whichever comes first) in the South Plainfield Senior Center parking lot at 90 Maple Ave.

Residents may bring old files, receipts, bills, financial statements or any other document that contain confidential personal information to be shredded. The maximum amount allowed is five file boxes or 100 pounds

per person. Items not accepted are hardcover books, newspapers, photographs, x-rays and bulk mail. There is no need to remove paper clips, staples or paperboard binder covers.

This free service is sponsored by the Middlesex County Board of Chosen Freeholders in conjunction with the Borough of South Plainfield for county residents. No businesses, please.

For any questions regarding this year's paper shredding, email the Middlesex County Division of Solid Waste Management at [solidwaste@co.middlesex.nj.us](mailto:solidwaste@co.middlesex.nj.us) or call (732) 745-4170.

**Prudential**  
New Jersey Properties  
Moretti Division

**The Strength of Teamwork,  
the Reputation for Results.**

Andrea Lacerda, Jesse Lacerda  
Sue Espin, Michele Leavy

*South Plainfield's Premier Real Estate Team*  
225 Maple Ave., South Plainfield, NJ 07080

Bus: (908) 755-5300 ext. 302  
Cell: (908) 578-1166

*The Lacerda Team* [Homes@LacerdaTeam.com](mailto:Homes@LacerdaTeam.com)  
[www.LacerdaTeam.com](http://www.LacerdaTeam.com)

**KAPE**  
INSURANCE AGENCY

Your neighborhood agent since 1961

510 Hamilton Blvd.  
So. Plainfield, NJ 07080

908-757-6666 FAX 908-561-0032  
[www.kapeinsurance.com](http://www.kapeinsurance.com)

Business - Auto - Home

**Trusted  
Choice**

**LARRAPINO**  
Heating & Cooling

Commercial & Residential  
Air Conditioning & Heating  
Sales - Service - Installation

Owner: Edward Larrapino  
NJ Lic. # 13VH0566920

**95% AFUE**  
90,000 BTU  
Lennox Furnace  
**13 Seer**  
3-Ton Lennox  
Condenser  
Starting at \$3,900  
(After Rebates)  
SPACE PAKS

**Call today  
for a no  
obligation  
Free  
Estimate!**  
732-906-9111

Get \$ 500 Federal Tax Credit  
up to \$ 400 Warm Advantage Rebate  
up to \$ 500 Cool Advantage Rebate  
up to \$1,350 LENNOX REBATE (Exp. 8/26/10)  
up to \$ 900 Gas Rebate for ETown Customers  
up to \$3,650 TOTAL SAVINGS!

12 Month Financing Available with Payments/Deferred Interest\*  
\*Interest free if paid within one year. Requires minimum monthly payments.

FUJITSU  
facebook

**BUYING ALL COINS, PAPER MONEY, SCRAP GOLD,  
STERLING SILVER, AND PRECIOUS METALS**

**TOP  
PRICES  
PAID**

References  
Available  
Upon  
Request

**We Can Offer the  
Absolute  
Best Prices**  
on all your coins, currency & scrap gold.

My top dollar offer is made up front! All transactions are strictly confidential and performed in a professional, straightforward manner. I have over 33 years of experience buying and selling collectibles. I am a member of the South Plainfield Business Association, and my family has been residents of South Plainfield for almost 10 years.

**I will evaluate your material and provide you with a free VERBAL appraisal (Call for details)**

**GREGORY S. HEIM, LLC**  
Full-Time Coin Dealer and  
Professional Numismatist  
**908-405-6408**  
**CALL ANYTIME**  
(If no answer, leave message.) I am available  
for appointments every day of the week from 8AM-8PM  
[www.njcoinbuyer.com](http://www.njcoinbuyer.com)

Email: [gregheim@njcoinbuyer.com](mailto:gregheim@njcoinbuyer.com)

- 10K-22K unwanted gold jewelry and scrap gold.
- ALL UNITED STATES COINS
- 1935 and before Silver Dollars
- 1964 and before United States 90% silver dimes, quarters, and halves
- 1965-1970 United States 40% silver half dollars
- 1958 and before cents (aka "wheaties" and Indian Head cents)
- All U.S. paper currency (e.g. Silver certificates, gold certificates & Red Seal \$2 bills)
- All foreign coins and paper money

You will always receive a base quote on all of the items that I buy (i.e. \$25 & up).

- Gold, Platinum, Palladium & Silver Bullion
- Sterling silver (forks, knives, spoons, trays, etc.) as long as it is marked "sterling" or "0.925"
- United States & Foreign Proof Sets, Mint Sets, and Commemorative sets (government and non-government issued)
- Quality, Vintage Sportscards (generally 1975 and before) & selected sports memorabilia

LIFE MEMBER: American Numismatic Association, Garden State Numismatic Association, Watchung Hills Coin Club (original member).  
MEMBER: Early American Coppers Club, Numismatic Literary Guild, Colonial Coin Collectors Club, NJ Numismatic Society



# events

## Around Town

### Wesley Rally Day Celebration

September 11

Wesley United Methodist Church, 1500 Plainfield Ave., will kick off its 2011-2012 church school season with a Rally Day service in the sanctuary on Sunday, Sept. 11 at 10:30 a.m. followed by a picnic, fellowship and games on the church lawn. In case of inclement weather, the picnic will be held in the church Fellowship Hall. Everyone is invited. No reservations are necessary. The event is free. Church school classes begin on September 18 at 10:30 a.m. Children ages pre-school through high school are welcome in our church school and there is no membership requirement.

### VFW to Hold Country Breakfast

September 11

The South Plainfield VFW will hold the first country breakfast of the season on Sunday, Sept. 11 from 8 until 11 a.m. Come in, relax, see old friends and enjoy a tasty breakfast.

For more information, call (908) 668-9751.

### SPHS Athletic Booster Club Meeting

September 13

South Plainfield High School Athletic Booster Club will hold a meeting on Tuesday, Sept. 13 at 6:15 p.m. before the "Meet the Coaches Night" in the high school cafeteria.

All parents/guardians of SPHS student-athletes are encouraged to attend this meeting and find out

what the club does to support them and the athletic programs.

### Meet The Coaches Night at SPHS

September 13

South Plainfield High School Athletic Booster Club will sponsor "Meet The Coaches Night" on Tuesday, Sept. 13 at 7 p.m. in the high school cafeteria. All parents/guardians are encouraged to attend. Coffee and dessert will be provided.

Also, visit our table to join the Athletic Booster Club. Membership is only \$5 and helps support our student-athletes.

### Sacred Heart Parish Golf Outing

September 14

Save the date! Sacred Heart Parish will hold its second annual golf outing at Cranbury Golf Course in West Windsor on Wednesday, Sept. 14 with a 9 a.m. shotgun start.

For information, email [plorance@churchofthesacredheart.net](mailto:plorance@churchofthesacredheart.net).

### St. Stephen Annual International Festival

September 16-18

St. Stephen, located at 609 Lane Ave., will hold its annual International Festival September 16-18. Hours are Friday, 4 to 11 p.m.; Saturday, 11 a.m. to 11 p.m. and Sunday, 2 to 8 p.m. The festival offers foods from four different cuisines: Middle Eastern, Greek, Slavic and American entrees and desserts.

The kid's korner section features two semi-trailers of boardwalk games, a castle bounce house, face painting,

crafts and apple decorating.

For questions, email [saintstephenchurch609@gmail.com](mailto:saintstephenchurch609@gmail.com) or call (908) 756-0410.

### Don't Cook Friday Spaghetti Dinner

September 16

The South Plainfield Knights of Columbus Council #6203 will hold their annual "Don't Cook Friday" spaghetti dinner on Friday, Sept. 16 at the council hall located at 334 Hamilton Blvd. from 4 to 7:30 p.m. Price is \$8 for adults, \$7 for seniors and \$4 for children.

Take out dinners are also available.

### Senior Center Picnic

September 29

The South Plainfield Senior Center picnic will be held on Thursday, Sept. 29 at the senior center from 12 to 4 p.m. Delicious food. Catering by Elmer's: chicken, fries, onion rings, corn on the cob, coffee and dessert. Entertainment by Ian Gallagher.

Tickets are \$15. Don't miss out—sign up at the senior center.

### 1961 Class Reunion

October 1

South Plainfield High School Class of 1961 will host their 50th reunion on Saturday, Oct. 1 at the Hilton Garden Inn at Raritan Center in Edison.

For information, email Brenda Belardo Ribar at [class1961sphs@gmail.com](mailto:class1961sphs@gmail.com).

### Send Your Community Events to:

[spobserver@comcast.net](mailto:spobserver@comcast.net)

### UNICO Celebrates 41st Anniversary

October 15

Plainfields' UNICO will celebrate its 41st anniversary of the Unification of Italy on Saturday, Oct. 15 from 6:30 to 11 p.m. at the Senior Center located at 90 Maple Ave.

Entertainment by Marianna Giancarla Biribin and Steve Berger.

\$25 donation per person includes Italian food and soft drinks; BYOB.

For tickets, call Robert Bengivenga at (908) 753-0247 or Renato Biribin at (908) 561-6685. No tickets will be sold at the door.

### — Out of Town —

### BBQ and Barchu At Beth Israel

September 9

Congregation Beth Israel, located at 18 Shalom Way in Scotch Plains, will hold its second annual BBQ & Barchu, today at 6 p.m. Dinner on the synagogue's outdoor patio, followed by communal singing to welcome the Sabbath. Family-friendly services for Friday night will begin at 7:30 p.m. A dessert reception will conclude the evening. The event is open to the community. Dinner cost: \$20 for adults and \$12 for children under 12.

For more information, contact the synagogue office at (908) 889-1830.

### Singles Dance Party

September 10

Steppin' Out Singles is hosting an upscale singles dance party on Sat-

### SENIOR CENTER Calendar

ANNUAL SENIOR PICNIC  
September 29, 1-3 p.m.—\$15

GERMANFEST  
October 27, 8 a.m.-6 p.m.—\$60

HUNTERDON HILLS  
December 8, 4:30-9:30 p.m.—\$60

#### MONDAYS

Crocheting ..... 9:30 am  
Yoga ..... 10:30 am  
Art Class ..... 11:30 am

#### TUESDAYS

Bingo ..... 10 am-2 pm  
Ladies Group ..... 10 am

#### WEDNESDAYS

Aerobics ..... 8:45 am  
Shopping ..... 9 am  
Computer.. 10 am, 11:30 am, 1 pm  
Crocheting ..... 1 pm  
Tai Chi ..... 2 pm

#### THURSDAYS

Active Seniors ..... 8:45 am  
Crafts Class ..... 10 am  
Computer.. 10 am, 11:30 am, 1 pm  
Exercise Class ..... 1:15 pm

#### FRIDAYS

Bingo ..... 10 am-2 pm

#### \*\*BACK BY POPULAR DEMAND!\*\*

Looking for members 55 or older to join our Billiards Club. Ladies are welcome. If you enjoy shooting pool, stop in the senior center to sign up. It's fun and FREE!

Daily Activities: Morning coffee, pool, cards, board games, art, yoga and crafts.

Call (908) 754-1047 for more info or visit [www.southplainfieldnj.com](http://www.southplainfieldnj.com)

Senior Center is open daily 8 a.m. to 4 p.m. Closed Saturdays & Sundays.

urday, Sept. 10 at 8 p.m. at Westin Princeton at Forrestal Village. Ages 40 and up; no jeans/tshirts/sneakers/shorts. Admission is \$17.

For more information, call (732)

## Your Health MATTERS

A Source for Medical/Dental/Wellness Professionals

### Lift Chairs from Twin City Pharmacy & Surgical

A Wonderful Gift Idea!



Twin City Pharmacy & Surgical partners with Golden Technologies to bring you the best products to enhance your life at home. The Lift Chairs in our store are best-in-class products to give you many years of comfortable and convenient use.

If you have any questions or want to discuss special requirements, please contact us directly and our team of mobility experts will help find the Lift Chair that's right for you. Prices begin at \$799 and we have dozens of fabric choices to choose from.

If qualified, Medicare may cover part of the cost of your lift chair. Your supplemental insurance may also pay a portion. Assignment is not accepted but we will bill on your behalf to assist you in any reimbursement available. This also depends on the type of policy you have and whether or not we are listed as providers for this insurance company. Our staff will be more than happy to assist you in any questions you may have concerning insurance.

### Twin City Pharmacy & Surgical

Telephone: 908-755-7696. Fax: 908-755-6003.

1708 Park Ave South Plainfield

Bill Ashnault RPh.—Owner • Sandy Severini—Owner.  
Tom Cassio Jr.—Owner • James Kim RPh.

24 Hour Emergency Care Service—Free Delivery

### Your Health Matters to Us.

Free Delivery

Regional Hospice & Home care provider

- Flu and Pneumonia Shots
- Major medical & Medicare billing available
- Hospital beds
- Wheel chairs
- Walkers
- Diabetic, Surgical & Ostomy Supplies
- Wound Care
- Oxygen

### Your Health MATTERS

Your Source for Medical/Dental/Wellness Professionals

To advertise your business in Your Health Matters, call 908-668-0010.

### CAREGIVER SERVICES

Marisol's Home Caregiver Services

Family owned & operated  
Providing affordable in-home care, daily or live-in

NJ State licensed, fully insured & bonded

Services include and are not limited to:

- Companionship
- Meal prep
- Personal care
- Laundry
- Transportation
- Errands
- Light housekeeping
- Medication reminder

Please call for a free in-home consultation.

Call (732) 912-9312

### The Center for Aesthetic and Reconstructive Dentistry, LLC

JOSEPH AIELLO, D.D.S.

\*Most insurance accepted. Office discount plan available\*

### IMPLANT, COSMETIC, & GENERAL DENTISTRY

160 Oak Tree Ave., South Plainfield • (908) 756-3600

FREE CONSULTATION  
Implant or Invisalign with X-ray

May Not Be Combined With Any Other Coupons Or Discounts Expires 10-31-11

CLEANING, EXAM & X-RAYS ONLY \$69.99

New Patients Only - Regular Price \$285  
May Not Be Combined With Any Other Coupons Or Discounts Expires 10-31-11

### Advanced Chiropractic & Wellness Center



Dr. Norayr Ozbalik, D.C.  
19 years experience

- Neck pain, back pain, headaches, numbness, tingling, weakness & pain in arms and legs • Fibromyalgia • Sciatica
- Auto accident related injuries • Whiplash
- Advanced certification on whiplash injuries

904 Oak Tree Avenue, Suite O, South Plainfield

(908) 561-1777 Fax: 908-561-9711

[www.drozbalichiropractic.com](http://www.drozbalichiropractic.com)

Most major medical insurance & Medicare accepted

### DURHAM DENTAL CENTER

COSMETIC & GENERAL DENTISTRY

281 Durham Avenue, South Plainfield (908) 791-0900

EXAM & CLEANING X-RAYS ONLY \$79.99 REGULAR \$255

DURHAM DENTAL CENTER

MAY NOT BE COMBINED WITH ANY OTHER COUPONS OR DISCOUNTS. NEW PATIENTS ONLY. EXPIRES 11-18-2011

Dr. Loay Deifallah, DDS • Most Insurance Accepted • Se Habla Espanol

ZOOM IN OFFICE BLEACHING ONLY \$199.99 REGULAR \$599

DURHAM DENTAL CENTER

MAY NOT BE COMBINED WITH ANY OTHER COUPONS OR DISCOUNTS. NEW PATIENTS ONLY. EXPIRES 11-18-2011



# events

## Around Town

656-1801.

### POW/MIA NJ Dog Tag Discussion

September 10

The POW/MIA NJ Dog Tag Project will present a discussion on Saturday, Sept. 10 at 1 p.m., at the New Jersey Vietnam Veterans' Memorial Foundation about its mission to return dog tags found in Vietnam. The presentation will include sharing stories of dog tag returns and discussing how you can help.

Admission: adults-\$5, seniors and students-\$3; children 10 or younger-free and veterans of military service and active military personnel-free.

For more information on the memorial or museum, please call (732) 335-0033 or visit njvwmf.org.

### International Festival At Our Lady of Fatima

September 10

Our Lady of Fatima Church will hold an International Festival on Saturday, Sept. 10 from 5 to 11 p.m. in the parish education and recreation centers located at 499 New Market Rd. Admission: adults (11 yrs. and up) \$10; children (4-10) \$5; 3 and under are free. Enjoy international foods, cultural exhibits, multi-cultural entertainment, activities for children, raffles, music and dancing.

For information, contact Roberta Maurer at (732) 245-9124 or e-mail RebaSpec@optonline.net.

### UNICO Ellis Island Trip Announced

September 10

UNICO Raritan Chapter is planning an outing to Ellis Island on Saturday, Sept. 10. Bus departs from the Stop and Shop parking lot, Rt. 202 and Orlando Drive in Raritan at 8:30 a.m. Upon arrival at Liberty State Park, a ferry will take us to the island. Tickets: \$30 per person.

For more information or to purchase tickets, call (908) 655-7388 or (908) 526-5470.

**Send Your Community Events to:**  
spobserver@comcast.net

### Country Fair and Polish Festival

September 11

The Little Servant Sisters of the Immaculate Conception will hold their 43rd Annual Country Fair and Polish Festival on Sunday, Sept. 11 on the grounds of the US Provincialate and Novitiate located at 1000 Cropwell Rd. in Cherry Hill. Rain or shine.

For further information, call (856) 296-3973 or (856) 424-1962.

### Bridge Lessons

September 12

Essex Bridge Center, located upstairs in VFW Post #2856, 95 W. Mt. Pleasant Ave. in Livingston, will be offering beginning bridge lessons on Monday, Sept. 12, 6:30-9 p.m. First six lessons of this series and the book for the course will be free. No partner necessary. Free light refreshments will be served.

For more information, visit [www.essexbridgecenter.com](http://www.essexbridgecenter.com) or call (973) 535-9262.

### Middlesex East WOWs Mass

September 12

Middlesex East Widows Or Widowers will hold their annual Mass for departed spouses on Monday, Sept. 12, starting at 7 p.m. at Holy Family Church, located on Emerson Street in Carteret.

All widows or widowers are invited to attend. After the Mass, there will be a business meeting at the Carteret Community Center, Pershing Avenue. Refreshments will be served.

### Singles Dance Party

September 16

Steppin' Out Singles is hosting an upscale singles dance party on Friday, Sept. 16 at 8 p.m. at the Buttonwood Manor Ballroom on Route 34 in Matawan. Ages 40 and up; no jeans/tshirts/sneakers/shorts. Admission: \$17.

For more information, call (732) 656-1801.

## County Eligible for Federal Assistance to Mitigate Impacts From Hurricane Irene

Middlesex County Freeholder Director Christopher D. Rafano and the Federal Emergency Management Agency (FEMA) announced jointly that federal assistance has been made available to residents of Middlesex County impacted by Hurricane Irene.

Eligibility allows residents to apply for different types of assistance, including temporary housing, repair, replacement or other needs such as Disaster Unemployment Assistance and Small Business Administration disaster loans.

"I encourage all residents and business owners who have suffered losses to apply for this aid to help them repair and rebuild their homes and livelihoods," said Freeholder Director Rafano. "The hurricane's impact will be felt for some time to come, but with the help of this aid and these programs, our residents and businesses can start on the path to recovery."

Residents can register by phone at 800-621-FEMA (3362) or TTY 800-462-7585 for those with hearing or speech impairments. Specialists are standing by at the toll-free numbers seven days a week, 7 a.m. to 10 p.m. local time, until further notice. Alternatively, registration can be completed online at [www.disasterassistance.gov](http://www.disasterassistance.gov) or through a Web-enabled mobile device or smart phone by visiting [m.fema.gov](http://m.fema.gov) and following the link to "apply online for federal assistance."

To register with FEMA, applicants

will have to provide: Social Security number, address of the damaged home or apartment, description of the damage, information about insurance coverage, a current contact telephone number, an address where you can get mail and bank account and routing numbers if they want direct deposit of any financial assistance.

This federal assistance was made available to Middlesex County after FEMA assessment teams consisting of personnel from FEMA, the state's emergency management agency, Department of Human Services, Department of Community Affairs, Middlesex County Office of Emergency Management as well as county and local officials worked tirelessly through the weekend to complete the survey of areas impacted in Middlesex County by Hurricane Irene.

"I want to thank the assessment teams from the federal and state governments and our municipal partners for their time and efforts on behalf of the people of Middlesex County," said Freeholder Deputy Director Ronald G. Rios, chair of the county's Law and Public Safety Committee. "Most importantly, I wish to thank and commend all the county offices, especially the Office of Emergency Management, employees and volunteers and the local first responder personnel who supported our response and recovery efforts. They displayed an incredible dedication to the health and safety of all who live and work in Middlesex County, and for that, we are eternally grateful."

The Middlesex County Office of Emergency Management will continue to monitor the progress of Hurricane Irene relief efforts and provide additional updates as needed.

Get all the  
South Plainfield news  
you want.

## Subscribe!

Call 908-668-0010  
or E-mail: [spobserver@comcast.net](mailto:spobserver@comcast.net)

**MOHN'S FLORIST**  
2325 plainfield ave., so plainfield  
908 561 2808  
[www.mohnsflorist.com](http://www.mohnsflorist.com)

- weddings and receptions
- sympathy designs • everyday floral gifts
- fruit, gourmet, gift baskets
- dish gardens • balloon bouquets

let us create anything  
you can imagine....

**WELCOME STUDENTS & TEACHERS...**  
**BACK TO SCHOOL!**

Daily Breakfast  
and Lunch Specials!

#1 Choice for Quality Catering

"Quality Food for Everyday Heroes"

**HOMETOWN HEROS**  
[www.hometownherosdeli.com](http://www.hometownherosdeli.com)  
**908-755-HERO (4376)**  
**OPEN 7 DAYS** 340 Hamilton Blvd. (By the DARE Bldg.)

**Spotlight on Dance**

- Ballet • Pointe • Tap
- Jazz • Hip Hop
- Contemporary/Lyrical
- Preschool Classes
- Competition Company

Comfort that can fit into any budget.

With a full line of best in class home comfort systems, a Carrier system can fit into any home budget.

**WEATHER MAKERS**  
**HEATING & COOLING**  
[www.Weather-Makers.com](http://www.Weather-Makers.com)  
**(908) 756-2333**  
Fax: (908) 315-3805

**SAVE UP TO \$3,650**  
See dealer for details.

**Carrier**  
turn to the experts

**Factory Rebates up to \$1,350 on qualifying systems.**  
Call for details.

Factory rebates of \$1,350, \$500 tax credit and \$1,800 utility rebates. Purchase date must be between September 1, 2011 - November 15, 2011. Installations must be completed November 30, 2011. Claims due by December 15, 2011. See dealer for details. For a limited time only. Cannot be combined with other coupons or specials. Valid 9/1/11 - 11/15/11.

CELEBRATING OUR  
22<sup>ND</sup> SEASON!

1990-2012

2601 Hamilton Blvd.  
(1 Block from the Car Wash)  
South Plainfield, NJ 07080  
**(908) 756-5422**  
Compare Our Tuition  
Starting @ \$50/month

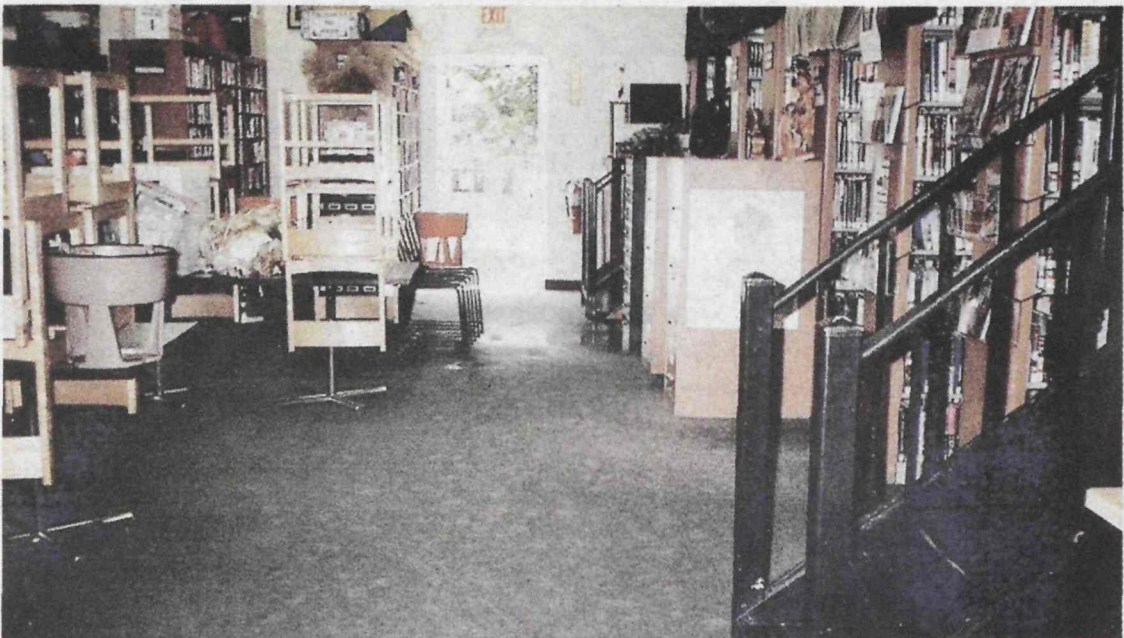
**Classes Begin  
Sept. 12th!**

For more info visit  
[spotlightondance.org](http://spotlightondance.org)





The sign above offers little optimism on the condition of the library. Below the flooded restrooms are included in the long list of areas to cleanup.



The main floor of the library sustained four inches of water damage.

## Library Struggles to Recover from Hurricane

By Chris Grippo

In case you haven't heard by now the South Plainfield library sustained significant damage from flooding due to Hurricane Irene. We are working as fast as we can to get the library open; however, extensive repairs to the interior are needed. Approximately four inches of water entered the building through three doors and it was not possible to get all the water out for 48 hours.

There will be no fines assessed on materials while the library is closed, so don't worry about renewing items. During this period the staff will be in

### NOTICE

*The Library Board of Trustees meeting originally scheduled to be held in the library on Tuesday, Sept. 13 at 7 p.m. will be relocated to the Senior Center on Maple Avenue.*

the building working.

Even though the library is closed, patrons can still access all our online databases as well as their accounts on the library website at [www.south-plainfield.lib.nj.us](http://www.south-plainfield.lib.nj.us).

Libraries in the surrounding area

are aware of the situation and South Plainfield patrons can borrow from them. The main branch of the Piscataway library is located at 500 Hoos Lane. Their telephone number is (732) 463-1633. The Plainfield library is located at 8th Street and Park Avenue. Their phone number is (908) 757-1111. Edison has three branches; the closest is in North Edison which is located at Grove Street and Oak Tree Avenue (732) 548-3045).

We will make every effort to keep all library users informed of the progress. Visit us on Facebook (South Plainfield Public Library).



The library's front entrance is strewn with debris after Hurricane Irene departed.

# JOE FASANO

732.752.3555

FREE ESTIMATES

## HEATING & COOLING


*We've got a special attraction for you....*

Ruud Super High Efficiency Air Conditioners and Furnaces - Paired Up For Peak Performance!

You are reading

# THIS AD.

And so are many others in South Plainfield!



**South Plainfield Observer**  
Delivering the best of South Plainfield since 1997

To reach local readers, there's no better way than in the Observer, the most read publication in South Plainfield.

**South Plainfield Observer** For advertising information and rates, call 908-668-0010 or email [spobserver@comcast.net](mailto:spobserver@comcast.net).

*St. Stephen's Church Presents...*

# INTERNATIONAL FESTIVAL

**2011** **2011**

Friday, Sept. 16<sup>th</sup> - Saturday, Sept. 17<sup>th</sup> - Sunday, Sept. 18<sup>th</sup>

4:00 PM - 11:00 PM    11:00 AM - 11:00 PM    2:00 PM - 8:00 PM

**INTERNATIONAL FOODS:**  
Middle Eastern, Greek  
Slavic & American  
Delicacies and desserts!

**ALSO FEATURING:**  
DJ - Shrimp & Clam Bar  
50/50 Drawing - Plus MUCH more!

**KIDS CORNER:**  
Boardwalk Games - Crafts  
Moon Walk - Fish Pond  
Sand Art - Face Painting  
Tie Dye - Necklace Beading

**FREE ADMISSION**

**iPad2**  
3g - 64 GB

**26" LCD HDTV**

**COACH POCKETBOOK & WRISTLET**

**\$200 APPLE GIFT CARD**

**ST. STEPHEN'S INTERNATIONAL FESTIVAL 2011**

## \$ 2 OFF!

Can be used toward the purchase of any food or non-alcoholic beverage item. Not valid on Super Raffle, liquor, kids corner or Boardwalk games. Cannot be combined with any other offer or Coupon. Cannot be reproduced. Limit one per person. Valid September 16, 17 and 18, 2011

[www.ststephenchurch.net](http://www.ststephenchurch.net)  
609 Lane Avenue, South Plainfield, NJ - 908-756-0410



## NEWS

### Suburban Woman's Club

At the September meeting of the Suburban Woman's Club of South Plainfield members enjoyed seeing friends and comparing notes on their summer activities and recent events. Club President Lucy Hudson called the meeting to order and asked the past Recording Secretary Diane Gallo to read the minutes of the previous meeting because new Recording Secretary Diana Cotone was at home dealing with a flooded basement resulting from Hurricane Irene.

Treasurer June Flannery presented the proposed budget for the club's approval and noted that annual dues were due at this time. September activities in the college district were announced, and include a luncheon on Monday, Sept. 12 by the Woman's Club of Clinton and a theater party sponsored by the East Brunswick Woman's Club, The Playhouse 22 production of "Barefoot in the Park." Federation Secretary Mary Ann Iannitto will arrange for transportation for members wishing to attend these functions. Members wishing to attend the NJSEWC September Council meeting at the federation headquar-

ters signed on to be included in the car pool. The GFWC Middle Atlantic Region Conference will be held at the Hyatt Regency Hotel in New Brunswick September 15-18. Two new GFWC trips were discussed: A Canadian Rockies and Glacier National Park trip is planned for June 30 through July 7, 2012 and "Discover Tuscany" will be a 10-day adventure, Sept. 13-22, 2012.

The NJSEWC State Fall Conference will be on Monday, Oct. 17, at the Bridgewater Marriott. This is always an informative and interesting day and members are encouraged to plan to attend the luncheon and workshops.

Program Chairman Natalie Bergen informed members of the upcoming programs they will be enjoying. The October meeting will be the Husband's Guest Night covered dish supper; entertainment will be provided by "The Little Big Band." Members signed up to bring their favorite recipes to share with our guests and any woman who might be interested in joining the club is asked to join us. Please call the membership chairman, Grace Bertucci, at (732) 549-9633.

### Literacy Volunteers of Union County Recruiting New Tutors

Literacy Volunteers of Union County (LV-UC) is a non-profit organization that recruits and trains volunteers to work with adults seeking to improve their reading, writing or English conversation skills.

Tutor training workshops provide volunteers with the skills needed to work with adult learners in Union County. The next workshop for new volunteers is scheduled at the Linden Public Library, 31 East Henry St. in Linden on October 15 and 22 and November 5. Sessions begin at 9:30 a.m. and conclude at 2:30 p.m. Attendance is required at all three sessions to become a certified tutor.

Through LV-UC's network of volunteer tutors, adult learners in the program have been able to get better jobs and become more productive members of the community.

Although our tutors meet at libraries throughout Union County, the greatest need for tutors is in the towns of Elizabeth and Plainfield.

To become a volunteer tutor you must be 18 years old. You do not need prior teaching experience and no foreign language is required.

To find out more about how literacy changes lives, visit [www.lvaunion.org](http://www.lvaunion.org). If interested in registering for the Linden workshop, click on the link in "Upcoming Events." There is a \$40 non-refundable registration fee. Need based scholarships are available to cover this charge. You may also register by calling Susan at (908) 755-7998 or emailing [susan@lvaunion.org](mailto:susan@lvaunion.org).



Sen. Barbara Buono addresses seniors about the importance of maintaining their eye health.

### Senator, Optometrist Partner to Promote Vision Health for Seniors

By Jane Dornick

Optometrist Dr. Bruce Kastner, clinical coordinator for the State of New Jersey Commission for the Blind and Visually Impaired (CBVI), spoke to seniors at the Senior Center about visual health and performed free eye examinations on August 28.

Alongside Dr. Kastner was Senator Barbara Buono (D-Middlesex), longtime champion of health care—especially for the elderly—and author of *A Guide to Statewide Benefits For Older Persons*.

Dr. Kastner explained common eye problems, including floaters, dry eyes, tearing, cataracts, glaucoma and other retinal disorders associated with age, including macular degeneration, diabetic retinopathy and retinal detachment. Vision screenings were performed free of charge by the Project Prevention Team of N.J.

Screening detects many, but not



Dr. Bruce Kastner performs an eye examination on Pat Tomei.

all, abnormal eye conditions, and a complete eye examination by an eye care specialist is recommended to seniors if any change or discomfort

is noticeable in the future.

The goal of the program is to save sight and restore vision whenever it

(Continued on page 10)

### LEGAL NOTICES

BOROUGH OF SOUTH PLAINFIELD  
MIDDLESEX COUNTY, NEW JERSEY

LEGAL NOTICE

ORDINANCE NO.1939

An ordinance amending Section 717.5 of the Code of the Borough of South Plainfield entitled "Signs for Commercial Purposes" FUNCTIONS was adopted after a Public Hearing and final reading were conducted on Tuesday, September 6, 2011 at the Public Meeting of the Governing Body which began at 7:00 p.m. in the Municipal Building, 2480 Plainfield Avenue, South Plainfield, NJ 07080 and is being advertised in The Observer on Friday, September 9, 2011.

Joann L. Graf  
Municipal Clerk

\$23.78

September 9, 2011

"Lehigh Valley Railroad's presence impacted the social fiber of the towns through which it passed, as well as the contributions to the growth of New Jersey's once mighty industrial history."

—Ralph A. Heiss, Author



### Lehigh Valley Railroad Across New Jersey

Documenting the dynamic history of the railroad from its birth in 1875 through its closing in 1976...

Never before seen vintage photographs from private collections of local residents and historical societies...

And stories of those who worked and traveled the Lehigh Valley Railroad.

Makes a great gift!

To purchase a copy (\$21.99), visit the Observer, 1110 Hamilton Boulevard or call 908-668-0010.



Offices in Middlesex, Hunterdon and Somerset Counties  
Each Office Independently Owned & Operated



**RE/MAX**  
Competitive Edge

Charles L. Decker Jr.  
SALES ASSOCIATE

Office (908) 755-0200

Cell 908-902-9406

[charlesdecker@remax.net](mailto:charlesdecker@remax.net)



32 South Plainfield Ave. So. Plainfield, NJ 07080

### Image is Everything!



Visit us at 2801 Hamilton Blvd. to see all the products available for your landscape projects. Do it yourself or let the professionals do it for you.

OPEN 7 DAYS

Mon-Fri 7am-5:30pm

Call for weekend hours

908-822-1000

[newimagecott@yahoo.com](mailto:newimagecott@yahoo.com)

delivery available

**NEW IMAGE**  
Landscaping & Lawn Care

Over 20 Years Experience

**35% OFF ALL SHRUBS**

We Can Help You Do It Yourself Or We Can Do It For You!

LANDSCAPING SUPPLIES & NURSERY

- Shrubs
- Red, Black, Tan Playground Mulch & Root Mulch
- Topsoil Seed, Erosion Products, Weed Mat, River Red Stone & Stone Dust
- Large Selection of Small Engine Parts & Landscaping Supplies & More

**10% OFF** on Paver or Retaining Wall Job

**10% OFF** on any Vinyl Fence Job over \$2500

**NILOLOCK**  
PAVERS & RETAINING WALLS

Contractors Welcome  
FULLY INSURED  
FREE ESTIMATES

ALL MAJOR CREDIT CARDS ACCEPTED

Come Visit Us at 2801 Hamilton Blvd. South Plainfield

**Cooling Problems?**

**ONE CALL**

**Solves Them All**

**Financing Available**

**24 Hour Emergency Service**

**Residential • Commercial**

Repairing • Servicing • Replacing & Installing ALL Brands & Models

**Mention This Ad & Save**

**\$25 Off ANY SERVICE CALL**

**One Call**

Electrical, Heating & Cooling Service Inc.

Central Air Conditioning Systems • Ductless Systems • Central Heating Systems

**"Serving Middlesex County"**

Fully Insured & Bonded

License # 13852 • H.I. Lic # 13VH05891900

**FREE ESTIMATES!**

[www.onecallelectrical.com](http://www.onecallelectrical.com)

call **908-769-8200**

**We Promise To:**

- properly diagnose your service needs
- give you the cost before work begins
- give you a clear explanation of the work
- be courteous and friendly
- follow up on our work with a phone call

**"We Stand Behind All Our Work..."**



## SPORTS WEEKLY RESULTS

### Punt, Pass & Kick, Eagles & Vikings Games Highlight Big Football Weekend Sept. 17-18

The South Plainfield Football Eagles organization welcomes everyone again this year to register and participate in the "NFL Punt, Pass and Kick Competition" which takes place on Saturday, Sept. 17 at the Kenneth Avenue football field at 5 p.m. sharp. Participants should arrive at the field by 4:30 p.m.

This competition creates a lively and engaging forum for boys and girls ages six to 15 to compete separately against their peers in punting, passing and kicking skills. There is no registration fee or purchase required for any participant to enter.

The five age divisions are: 6-7, 8-9, 10-11, 12-13 and 14-15. The divisions are based upon the child's age as of December 31, 2011. Participants may register and compete in only one local competition.

All participants must show proof of age at all levels of competition. Failure to provide a birth certificate will result in that participant being ineligible to compete. Also, all participants' parents/guardians must submit the signed parental waiver form "Entry/

Release of Liability form." This form will be available for completion at the registration table on the day of the event.

You can also register online at [www.NFLPPK.com](http://www.NFLPPK.com). Click on "Find a Local PPK Competition," enter South Plainfield's zip code (07080), scroll down to South Plainfield Football Eagles field, Saturday, Sept. 17 and register. Additional information is available by clicking on "ABOUT PPK". If you have any questions about this competition, please contact Kevin Dunn at (973) 219-0731 or email [kdunn1@verizon.net](mailto:kdunn1@verizon.net).

This is a fun event for both the children who participate and the spectators who enjoy it. We encourage all of you to discuss this event with your children, and hopefully, we will see you at the field on Sept. 17.

Right after the PPK event, the Eagles are hosting the home game for the Middlesex Vikings Semi-Pro team. The Eagles are enjoying a great partnership with the Vikings, who won the equivalent of their super bowl last year. The Vikings coaches have

over 20 years of successful experience coaching children and adults. They are providing invaluable coaching and training to the Eagles coaches and children.

The game starts at 7 p.m. at the Kenneth Avenue football field. Gate fees are \$6 for adults and \$3 for children over the age of five and for seniors. The game is free for all kids under the age of five and all South Plainfield Eagles players and cheerleaders. The worst seats are fifth row and food/beverages are astronomically cheaper than a Jets or Giants game!

On Sunday, Sept. 18 we are holding our second home game starting at 9 a.m. (This coming weekend is our first home game starting at the same time.) The little guys and gals have been working very hard throughout all of August and early September to be ready to perform at their highest abilities. We highly encourage the entire town to come and root for our kids.

—Submitted by Anthony Cangialosi  
SP Eagles President

### Sacred Heart Second Annual Golf Outing Next Wednesday

Sacred Heart Parish will host its second annual golf outing at Cranbury Golf Course in West Windsor on Wednesday, Sept. 14.

Registration and continental breakfast at 8 a.m.; the driving range will be available. Shotgun start at 9 a.m. Prizes awarded for closest to the pin, longest drive and hit the green. Hot dogs, soda or beer at the turn and a lunch buffet are included in the package.

A platinum sponsorship (\$1,000 donation) includes a foursome, your corporate banner, a sign on the first tee and special recognition at the luncheon. A gold sponsorship (\$750 donation) includes a foursome, a sign on the 18th tee

and recognition at the luncheon. A silver sponsorship (\$500 donation) includes a twosome, a tee sign on the tee of your choice and recognition at the luncheon. An event sponsor (\$600 donation) includes your corporate banner and recognition at the luncheon. Breakfast sponsors (\$250 donation) requires two or more sponsors, beverage cart sponsors (\$250 donation) requires two or more sponsors and individual sponsors have their personalized signs on any hole of their choice. Fee per golfer is \$130 and fee per foursome is \$520.

To register, call Manuel P. Sanchez at (908) 355-3000, ext. 17.

### Golf Outing to Benefit Fisher House Foundation

Chaumont Post #243 of the American Legion is sponsoring a golf outing on Friday, October 7. The event will take place at the Bunker Hill Golf Course, 220 Bunker Hill Rd. in the

Griggstown section of Franklin Township. Tee time is 8 a.m. The cost per player is \$100. Players may sign up at the post individually or as a foursome. The outing is limited to 40 golfers/10 foursomes. The cost includes greens fees, cart, continental breakfast at the course, refreshments, burgers and hot dogs and beer at the turn, and a spaghetti dinner with wine and beer at the post after the outing. Prizes will be awarded. The last day for sign-ups is Monday, Sept. 26.

The proceeds of the outing will benefit the Fisher House Foundation. Fisher Houses are residences for family members of combat veterans who are recovering from wounds at major military medical centers. This is done at no cost to the families. Annually, the Fisher House Program serves more than 12,000 families, and has made available over three million days of lodging to family members since the program originated in 1990.

### Cory Kline Golf Tournament Set For September 30

The second annual Cory Kline Memorial Golf Tournament will be held this year on Friday, Sept. 30 at Rutgers Golf Club, 777 Hoes Lane West in Piscataway. Cory, the son of retired South Plainfield Police Officer Gary Kline and wife Linda, passed away on September 22, 2009 just a few days after being diagnosed with leukemia, leaving behind his wife, Nicole, and young children, Elizabeth and Jaxon.

The tournament was the idea of Cory's father, who wanted not only to bring family and friends together to do something Cory enjoyed so much, and also to raise money for his wife and children. Last year, 124 golfers and a total of 150 people attended.

The \$150 cost per golfer includes lunch and beverages. Payment must be received prior to confirming your place. Checks can be made payable to Gary Kline; mail to 375 Wampee St. NW, Calabash, N.C. 28467. If using PayPal, send to Gary's PayPal account: [juveyman@aol.com](mailto:juveyman@aol.com). Sponsorships and/or messages are available for \$100 and will be displayed in a continuous loop on each golf cart's nine inch monitor.

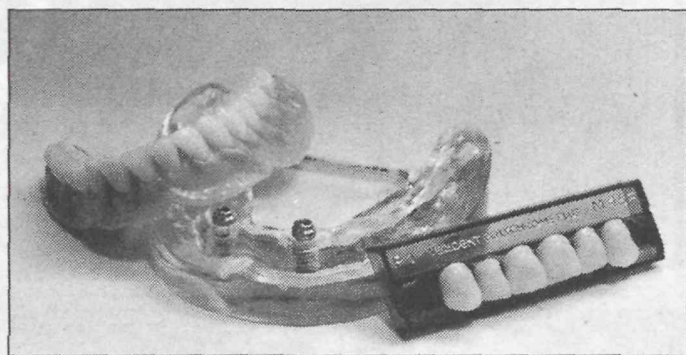
For information, call David Haynie at (917) 359-7834, email [davidhaynie@hotmail.com](mailto:davidhaynie@hotmail.com) or Gary Kline at (910) 579-5946, email [juveyman@aol.com](mailto:juveyman@aol.com).

## DENTAL IMPLANTS



## FREE CONSULTATION

OVER 2,500 IMPLANTS PLACE EACH YEAR



**Needed Care at a Reasonable Cost!**

**What Are You Waiting For?**

**CALL NOW!**

### Specialists On Staff

• Lab On Premises

- Affordable Implant & Denture Options
- Emergencies Seen Same Day
- New Patients Welcomed
- No Interest Payment Plans

## Cosmetic Dental Associates

3 Locations for Your Convenience

New Brunswick  
732-246-0288

Piscataway/S. Plainfield  
908-561-5100

[Cosmeticdentistnewbrunswick.com](http://Cosmeticdentistnewbrunswick.com)

CHAPEL HILL DENTAL  
Middletown/Red Bank  
732-345-8460

[chapelhilldentistarts.com](http://chapelhilldentistarts.com)



### GOT SPORTS?

Send your results to:  
[spobserver@comcast.net](mailto:spobserver@comcast.net)



# Obituaries

## Lillian Mary Smith, 83

Lillian Mary Smith of South Plainfield passed away at home on Thursday, Sept. 1.



Lillian Mary Smith

Born on October 28, 1927 in New York City to Theodore and Mary (De Gennaro) Scanlon, she lived in South Plainfield for 56 years.

Mrs. Smith was an office manager for the *South Plainfield Reporter* and a receptionist for the Borough of South Plainfield. She was a volunteer at the South Plainfield Senior Center and a District Committee Woman for the South Plainfield Republican Party.

Mrs. Smith was predeceased by her husband, Kevin Joseph Smith, Sr. in September of 1990, and a daughter, Karen A. Smith in 2001.

She is survived by a son, Kevin Joseph Smith, Jr. of South Plainfield; two daughters, Norine E. Haines and husband William of Earleville, Md. and Kathleen M. Zawatski and husband Stephen of Piscataway. She is also survived by three grandchildren, Kevin Joseph Smith III of Cape Coral, Fla., Kaitlyn N. Zawatski of Piscataway and Lance Corporal Stephen M. Zawatski, U.S. Marine Corps stationed in New River, N.C.

Funeral services were held at South Plainfield Funeral Home.

extended family members.

Funeral services were held at McCriskin-Gustafson Home For Funerals.

## Helen F. Holub, 96

Helen F. Holub of South Plainfield passed away on Friday, Aug. 25 at JFK Medical Center in Edison.

She was born on July 2, 1915 in Perth Amboy to Michael and Susan (Melochnik) Gondola.

Mrs. Holub was a machine operator for Johnson & Johnson Company in New Brunswick for 18 years before her retirement in 1973.

Mrs. Holub was predeceased by her husband, John, in 1992.

She is survived by a daughter, Ellen Fender of East Stroudsburg, Pa.; a brother, Raymond Gondola of Edgewater, Fla.; five grandchildren, Kenneth Bori, Mary Fahmy, Linda Paul, Ann Stager and John Bori; six great grandchildren, Mandi, Justin, Rachel, Joshua, Sarah and Marianna, and two great-great grandchildren, Elijah and Ethan.

Funeral services were held at South Plainfield Funeral Home.

## Gary Edward Notte

Gary Edward Notte of Middlesex passed away on Saturday, Sept. 3.

There is no space big enough to even begin to capture the effect Gary's life had on the lives of all those who knew him. If anyone needed help in any way, Gary was there. And it never mattered how he was feeling or any other circumstance, if you needed him—he was there. For the past three years, Gary fought cancer. And it was a fight he fought bravely, with great courage and even greater faith. But he didn't fight it alone. From the first diagnosis, Gary turned to his faith and to his family and friends, for support. And they never let him down. They upheld him through the most difficult of times and gave him the will to keep on fighting, which he did, and lots of fun along the way to keep him part of things, which he truly appreciated and never hesitated to participate in.

Gary was born on February 9, 1951 and was raised in Newark. He worked for AT&T for 42 years as a director, connectivity and metro networks product management.

He was predeceased by his parents, Edward and Ann Notte.

Gary was survived by his wife, Eileen Bonini Notte; a son, Jason Notte and fiancée Laura Flint; a daughter, JoEllen Notte Hansen and

husband Taylor and his beloved four-legged daughters, Zoe and Bridgette. Also surviving is a sister, Doreen Notte Muschio; two nieces, Kristin and Tiffany Muschio; a brother-in-law, Charles Muschio; two nephews, Michael and Jordan Armstrong; a brother-in-law, Thomas Bonini and wife Sheryl, and many, many dear and loved friends.

Funeral services were held at McCriskin-Gustafson Home For Funerals.

Donations in his name can be made to CPAMC-Options at Roosevelt Park, Oak Drive, Edison, N.J. 08837.

## Marie E. Ranno, 81

Marie E. (Sansone) Ranno died on Thursday, Sept. 1 at her daughter's residence surrounded by her loving family.

Marie was born in Montclair and grew up in the Oranges. She had been a resident of South Plainfield since 1955 and recently moved to Green Brook in 2005 to be with her daughter.

Marie spent her time as a homemaker where she enjoyed family and friends. Later, she worked part-time for the South Plainfield School District as a cafeteria worker in Riley School. She was a devout Catholic and belonged to Sacred Heart Roman Catholic Church in South Plainfield.

She is predeceased by her husband, Victor, who passed away July 22, 1997.

Marie leaves behind three children; Carol Beers and husband Wes of Green Brook, Peter Ranno and wife Judith of Brick and Joseph Ranno and wife Isabel of Southampton. She will be missed by her four grandchildren, Peter and Michael Ranno, Nicolette and Angelo Mejia-Ranno, and her brother, Eugene Sansone of Belle Mead.

Funeral services were held at McCriskin-Gustafson Home For Funerals.

In lieu of flowers, please send a donation to the Green Brook Rescue Squad, 115 Greenbrook Rd., Green Brook, N.J. 08812, (732) 968-1188.

## State Authorities Alarmed at Increased Mushroom Poisoning

The recent wet weather has produced a bumper crop of beautiful mushrooms across the state. Unfortunately, many delicious looking varieties are in fact, extremely poisonous. Several New Jersey residents have found themselves hospitalized with serious effects from eating what they believed to be innocent mushrooms. Two New Jersey residents have been hospitalized, in critical condition and may need liver transplants as the result of their misadventure. The New Jersey Department of Health and Senior Services (NJDHSS) and the New Jersey Poison Information and Education System (NJPIES) warn the public to refrain from eating mushrooms they find growing on their lawns or in the wild.

Mushroom picking has long been a passion of many gourmets. Unfortunately, many edible mushrooms have toxic "look-alikes." The storms before and Irene herself have produced an apparent explosion of toxic "look-alikes." There is no easy way to tell the difference between poisonous and harmless mushrooms. In addition, poisonous and non-poisonous mushrooms can

grow side by side. Even experienced mushroom pickers can be fooled at times, so this warning must be taken seriously. Children must be taught never to put wild plants, berries, nuts, or mushrooms into their mouths.

If an exposure should occur remove any remaining parts of the mushroom from the victim's mouth and place those fragments and all mushrooms that are in the immediate vicinity of the incident into one or more paper bags (not plastic!). Immediately call the New Jersey poison experts at (800) 222-1222. The poison center will arrange for an expert to identify the mushroom and then provide advice on treatment depending on the mushroom's identification. A digital photograph should be taken of the mushroom(s) in question. It helps to take a picture of the mushroom next to other objects such as a coin, ruler, etc. to provide a sense of scale.

Do not wait until symptoms appear if exposure is suspected. Poison center experts (doctors, registered nurses, and pharmacists) are available 24 hours a day, 7 days a week, 365 days a year.

## Trip to Trapp Family Lodge And Indian Head Resort

The Adult School is sponsoring a fall trip to the Trapp Family Lodge and Indian Head Resort, Tuesday, Oct. 11 to Saturday, Oct. 15.

Trip includes visits to the White Mountain Cider Co., Cabot Creamery, Ben & Jerry's Ice Cream Factory, Tuckerman's Brewery, Castle in the Clouds Estate and the Cog Railway.

Package includes round trip motor-coach transportation, one night lodging at the Trapp Family Lodge in Stowe, VT and three nights at Indian

Head Resort, Lincoln, N.H., four full breakfasts, one boxed lunch, four full dinners, afternoon tea and cookies, welcome and farewell cocktail receptions, several tours, ride to the top of Mt. Washington aboard the Cog Railway, all baggage handling, taxes and gratuities except for drivers, tour guides and chambermaids.

Price is \$898 per person double occupancy. For full itinerary, questions or reservations, call Sheina at the Adult school at (908) 754-4620, ext. 213.

## Elena F. Lillo, 87

Elena F. (Notino) Lillo died on Wednesday, Aug. 31 at JFK Hartwyck at Edison Estates.

Born and raised in Rovereto Trento, Italy, Elena moved to the United States, settling in South Plainfield in 1946.

She worked as a supervisor for Magno Ceram in South Plainfield and was a member of Sacred Heart RC Church in South Plainfield.

She is predeceased by her husband, Frank, who died in 1972 and a brother, Renato Notino, in 2009.

Elena is survived by two sisters and two brothers of Italy, as well as

**C.J. SCOTTI Services**

**GUTTER SPECIALISTS**

- ✓ Cleaned
- ✓ Repaired
- ✓ Installed
- Roofing & Siding
- Soffits and Aluminium Trim

Licensed & Insured

Call Chris for  
FREE ESTIMATE & Best Price!  
**732-424-0454**

**HOMETOWN HEROS**

**SEND-A-PLATTER**

We will send to any home a beautifully arranged and wrapped Assorted Sandwich Tray with two of our homemade salads—Any Day—Any Time. Serves 8-10

**\$49.95**

**908-755-HERO (4376)**  
www.hometownherosdeli.com

**McCriskin-Gustafson**

"An Independent, Family Owned & Operated Funeral Home"

**HOME FOR FUNERALS, LLC**

**(908) 561-8000**

2425 Plainfield Ave., South Plainfield, NJ 07080

**PRE ARRANGEMENTS • S/S MEDICAID PROTECTION • CREMATION SERVICES**

**GREEN BURIALS**

James A. Gustafson, Pres./Mgr. • N.J. Lic. No. 4205  
Richard W. McCriskin II, Vice-Pres./Dir. • N.J. Lic. No. 4564

Richard W. McCriskin, Dir. • N.J. Lic. No. 3147  
William C. McCriskin, Dir. • N.J. Lic. No. 3382  
Daniel M. Erickson, Dir. • N.J. Lic. No. 4798

**SOUTH PLAINFIELD FUNERAL HOME**

"OUR FAMILY CARING FOR YOUR FAMILY SINCE 1949"

2456 Plainfield Avenue  
South Plainfield, NJ 07080  
(908) 756-2800

Michael L. Castoral, Manager, NJ Lic. No. 4305

www.southplainfieldfuneralhome.com

- Pre-planning
- Bereavement Support Group
- Proud member of Veterans & Family
- Memorial Care

**Newspapers Deliver.**

The Observer delivers more of what readers are looking for ...

...news & information about their town.

While daily newspapers struggle with shrinking circulation, and less local news, more and more readers are turning to the Observer to get the news they want.

According to a market research study commissioned by the New Jersey Press Association, 73% of New Jersey adults rely on newspapers for local shopping information. That's a good reason to advertise your business.

**The South Plainfield Observer is the very best vehicle to reach local consumers.**

For advertising or subscription information, stop in our office at 1110 Hamilton Boulevard or call 908-668-0010.

Delivering the best of South Plainfield since 1997

Call 908-668-0010 to speak with one of our sales professionals who can assist you in planning an effective campaign.



## POLICE REPORT

On August 23, a Dey Street resident reported the theft of a floor jack and a window air conditioner from the front of their home.

On August 24, Thomas J. Magner, 28, of Piscataway was arrested for driving while intoxicated and reckless driving.

A Loraine Avenue resident reported that a baseball had been thrown through the rear passenger side window of their vehicle.

On August 25, Irving N. Lozada, 38, of Perth Amboy was arrested

at Restaurant Depot for shoplifting \$336 worth of food.

On August 29, Idesha M. Green, 27, of South Plainfield was arrested for driving on a suspended license and an outstanding warrant.

On August 30, an Arlington Avenue resident reported the theft of tools from their garage. A panel had been removed from the door to gain entry.

An Arlington Avenue resident reported the theft of various tools from their vehicle.

## MCC to Host Art Exhibit

An art exhibition, "Disillusions: Gendered Visions of the Caribbean and its Diasporas," will be held at the Middlesex County College Studio Theatre Gallery from Sept. 27 to Nov. 8. The gallery is open weekdays from 10:30 a.m. to 4:30 p.m.

A reception for the artists, which is open to the public, will be held Tuesday, Sept. 27 from 5-7 p.m. The

program is in cooperation with Rutgers University.

"This exhibition brings together work of women artists from the Caribbean and its diasporas that addresses themes related to gender," said Tatiana Flores, assistant professor of Art History and Latino and Hispanic Caribbean Studies at Rutgers, who is curating the exhibit. "It defines the Caribbean as an expansive space that is not limited by national borders or island geographies."

The artists' work encompasses a variety of media: painting, video, performance, photography and mixed media.

In addition, a full-day symposium is scheduled for Friday, October 14. A morning session with the artists will take place at the gallery from 10:30 a.m. until noon. An afternoon session that includes a presentation of scholarly papers will take place at Rutgers from 2-5 p.m. at 212 Murray Hall on the New Brunswick campus.

This session of artists, curators and scholars includes Jerry Philogene, Rocío Aranda-Alvarado, Sandra Stephens, Christopher Cozier and Nicole Awai.

## In My Opinion

(Continued from page 2)

our determination to protect freedom for all.

Make no mistake: 9/11 changed our country forever—and a tragedy of this magnitude demands memory and vigilance.

Almost 3,000 people were murdered in the devastating attacks of 9/11, including 60 police officers and approximately 350 firefighters and other first responders. As a nation, we must keep alive the memories of these courageous Americans.

So let's ask every American to stop, remember—and show the world how strong we are when we stand together.

To learn more about the Moment of Remembrance, visit [www.lautenberg.senate.gov/stopandremember](http://www.lautenberg.senate.gov/stopandremember).

**SEN. FRANK R. LAUTENBERG**

Dear Editor,

At a recent council meeting, Councilwoman Christine Buteas was trying to downplay the fact that spending has gone down two years in a row under the council's new GOP majority. In doing so, she said it was no big deal because spending had been going down for the past few years, implying that it had gone down when her party, the Democrats, were in charge.

The truth is just the opposite. Going all the way back to the year 2000, the Democrats did not reduce spending once, not by one penny. In fact, on average, over the last decade the Democrats raised spending each year by over \$850,000.

I'm surprised that as a member of the Council, Buteas did not know this. You would hope she would be better in touch with the Borough's finances.

**COUNCILMAN ROB BENGIVENGA**

## Vision Health

(Continued from page 7)

is medically possible. Statistics show that 50% of all blindness and vision loss could be prevented with proper medical eye care. CBVI conducts and sponsors a variety of educational programs and eye health screening throughout the state to detect vision problems.

For those who cannot afford recommended examination or treatment and do not have any health insurance, please contact the project prevention department at (973) 648-6901. The visually impaired or legally blind can call (877) 685-8878 to find out how to pursue receiving services through the state.

## Homestead Benefit Applications/ Senior Freeze Filing Deadline Oct. 31

The New Jersey Treasury mailed approximately 1.5 million eligible homeowners Homestead Benefit applications recently.

New Jersey will provide property tax relief through credits on property tax bills. Homeowners who meet the eligibility requirements will receive a partial credit for property taxes they paid for 2010 against their property tax bills for 2012. The deadline to file is October 31.

New Jersey residents who owned a principal residence on October 1, 2010 and paid property taxes on that home will be eligible to receive the Homestead Benefit if they reported \$75,000 or less in New Jersey gross income for 2010, or if they are disabled or age 65 or older and had 2010 gross income of \$150,000 or less.

For information on the program, call the Division of Taxation's Homestead Benefit Hotline at 1-888-238-1233 from 8:30 a.m. to 5:30 p.m., Monday through Friday.

Homestead benefit information is also available at [www.state.nj.us/treasury/taxation/2009homesteadinfo.shtml](http://www.state.nj.us/treasury/taxation/2009homesteadinfo.shtml) and through the Automated Tax Information Sys-

tem at 1-800-323-4400. Text telephone service for the hearing impaired is provided at 1-800-286-6613 or (609) 984-7300. Once they receive their applications, homeowners can file online at [www.state.nj.us/treasury/taxation/](http://www.state.nj.us/treasury/taxation/) or by phone by calling 1-877-658-2972.

Homeowners who filed their 2009 Homestead Benefit applications online and indicated that they wanted to receive this year's application electronically will be sent an email containing instructions for downloading their 2010 application packet in early June.

The deadline for filing Senior Freeze (Property Tax Reimbursement) applications has been extended to October 31. The Senior Freeze and the Homestead Benefit are distinct property tax relief programs with different eligibility requirements and applications.

For information about the Senior Freeze Program, or to obtain an application, contact the Property Tax Reimbursement Hotline at 1-800-882-6597 from 8:30 a.m. to 4:30 p.m. weekdays.

Information is also available at [www.state.nj.us/treasury/taxation/prop\\_frez.shtml](http://www.state.nj.us/treasury/taxation/prop_frez.shtml).

## Clean Business Association Asks For Your Help

The South Plainfield Clean Business Association (SPCBA) is dedicated to keeping South Plainfield litter free and is asking borough businesses and residents for help.

The SPCBA is striving to keep South Plainfield free of litter, which not only can cause disease, but is unsightly for our neighborhood, by sponsoring the Adopt-A-Spot program. Through this program, businesses or families adopt a small parcel of land and pledge to keep it clear of litter. Presently, 17 spots are adopted with 13 spots remaining.

The SPCBA is appreciative of the current adopters' efforts to keep South Plainfield litter free: Courtney Family, Buteas Family, Stillman Photography, Rosco Family, Timber Creek Landscaping, Keystone Community Residence, South Plainfield Business Association, McCriscin-Gustafson Home For Funerals, South Plainfield Funeral Home, Pender and Moore Families (three spots), Austin Family, Zielinski Family, Weiser Landscape Construction and Sod Services, Bourbeau Family and Midco Residential.

Keep our borough clean, Adopt-A-Spot! For more information, call Alice Tempel, South Plainfield's environmental specialist, at (908) 226-7621.

## Volunteers Needed For Fall Litter Cleanup

The South Plainfield Clean Communities Advisory Board (CCAB) will sponsor a targeted public lands cleanup on Saturday, Sept. 17.

South Clinton Avenue is a high traffic road through an industrial district that includes wooded parcels. Many of the businesses are meticulous about property maintenance. Several have earned the Clean Business Association's prestigious Glitter Award.

Others are less careful about cleaning their road frontage. Cluttered loading docks, open trash dumpsters, uncovered trucks and careless motorists all contribute to roadside litter. The CCAB believes that clean business districts attract high quality businesses that strengthen the borough's commercial sector and tax base.

The cleanup will run from 9 to 11 a.m. Gloves, trash bags, safety vests and other equipment will be provided. Volunteers will meet at the Highland Woods Nature Center at 115 Sylvania Pl.

Call Alice Tempel, Clean Communities coordinator, at (908) 226-7621, or e-mail her at [atempel@southplainfieldnj.com](mailto:atempel@southplainfieldnj.com) for more information.

## BUSINESS/PROFESSIONAL/SERVICES

### AUTO BODY

**R&C AUTO BODY**  
Family Owned & Operated Since 1962  
Expert Color Matching  
24 Hour Towing  
Lifetime Repair Warranty  
Lic. No. 00992A  
**908-757-1933**  
3330 Park Ave., South Plainfield

### CONSTRUCTION

References Available  
Fully Insured  
N.J. License #13VH00353600  
**HARTJE CONSTRUCTION COMPANY**  
Residential Contractor  
Additions • Bathrooms • Kitchens  
• Decks • Windows • Siding  
**908-754-8921**

### MASSAGE

**CENTRAL JERSEY**  
Holistic Health Center and Spa  
• MASSAGE • REFLEXOLOGY  
• HYPNOSIS • REIKI  
• DOULA LABOR ASSISTANT  
Roxanne Cortese, CD, CHP, CMT  
2701 Park Ave. So. Plainfield, NJ 07080  
(908) 561-1511  
By Appointment Only  
GIFT CERTIFICATES AND GIFT BASKETS

### LANDSCAPING/PROPERTY MAINTENANCE

**ktulla**  
Property Maintenance, LLC  
Lawn Maintenance • Landscape Design  
Mulch • Top Soil • Clean Ups  
Power Washing • Driveway Sealing  
Snow Plowing  
[ktullapm@gmail.com](mailto:ktullapm@gmail.com) 732-556-0356

### PAVING AND MASONRY

**MARK L. DIFRANCESCO**  
PAVING • MASONRY  
Free Estimates  
Driveways • Parking Lots • Seal Coating • Pavers • Wallstone  
Slate • Bluestone • Excavating • Foundations • Block Work  
Cultured Stone • Drainage • Water Proofing  
3RD GENERATION IN BUSINESS  
**908-668-8434**

### REAL ESTATE

**Barbara Cirigliano**  
SRES, ASP, REALTOR  
"A Proven Professional"  
Weichert's President's Club  
Resident of South Plainfield  
**Weichert Realtors**  
We Sell More Because We Do More  
**(908) 917-9540 (cell)**  
**(908) 561-5400 (office)**  
[barbarac@weichert.com](mailto:barbarac@weichert.com)  
55 Stirling Road, Watchung, NJ 07069

### ROOFING

Quality Work At Unbeatable Prices  
**Walter Podpora Roofing**  
• Gutters • Windows • Siding  
**(908) 730-9551**  
131 Delmore Ave.  
South Plainfield, NJ 07080  
Lic #13VH00534000

**CELEBRATING 50 YEARS**  
Since 1960  
**J.T. PENYAK ROOFING**  
**908-753-4222**  
[www.penyakroofing.com](http://www.penyakroofing.com)  
3571 KENNEDY ROAD  
SO. PLAINFIELD, NJ 07080



# Observer Classifieds

## LOCAL CLASSIFIEDS

### BOWLERS NEEDED

BOWLERS NEEDED-BEGINNER, INTERMEDIATE, men/women at Stelton Lanes on Tuesdays at 12:30. Call (732) 632-9676.

### HOMES FOR SALE

LACKLAND 3 BDR, 2.5 BATH RANCH-Kennedy School area, So. Plfd. TWO STORY HANDYMAN SPECIAL-Kennedy School area, double lot. For info, call Mary Ellen O'Connor, Weichert Realty. (908) 294-0146.

### NEW HOME FOR SALE

NEW HOME IN SOUTH PLAINFIELD-1800SF, 4 BDR, 2.5 bath, central air, 1 car garage, granite counters, hardwood floors, 8' ceiling in basement, 50' x 100' lot at 126 Grove St. 1 block from Spring Lake Park! \$399K call 908-668-0050. Principals only.

### HOUSE FOR RENT

HOUSE FOR RENT-SOUTH PLAINFIELD, 2 BDR, 1 bath, great location. Immediate occupancy. \$1,800 plus util. 1 1/2 mo. security. No smoking. Pets okay. Call (732) 476-4133.

### HOME FOR SALE-OVER 55

BEAUTIFUL HOME IN GATED COMMUNITY-2 BDR ranch in Somerset Run (55+ community). Located just off 287 in Somerset, this home boasts 2 baths, huge master BDR, gourmet kitchen, luxury clubhouse amenities, indoor & outdoor pools and much more! \$399,000. To view home, visit realtor.com & search MLS ID# 2848916-8412 or call Susan at (732) 710-8412. Realtors-Earn 2.5% commission!



### APARTMENT FOR RENT

SO. PLFD. 1 BDR APT.-PRIVATE ENTRANCE No pets/smoking. Lease, security, credit check. \$850/mo.+util. (908) 561-4364.

### GARAGE FOR RENT

SO. PLFD. APPROXIMATELY 900 SQ. FT. -High ceilings, good for small repair or storage. Call (908) 757-2215.

### CRUISE OPPORTUNITY

JOIN US ON A 12-DAY EUROPEAN CRUISE -Bill & Georgeann have booked 18 cabins. Departs Barcelona. Six ports in Italy, 1 in France, 1 in Croatia. Leave 6/27/12, ret. 7/9/12. Brand new Carnival ship, The Breeze. For more, (908) 561-2808 or (908) 380-8165.

Rates: \$15 for three lines; each additional line is \$1.

### ESTATE SALE



220 Hillside Avenue

(Off Hamilton Boulevard)

Saturday, Sept. 10

(Rain or Shine)

8 am to 4 pm

Furniture, appliances, kitchenware, tools, clothing, etc.

A great product or service plus consistent advertising equals

**SUCCESS!**



Don't want to take our word for it? Just ask our weekly advertisers!

## STATEWIDE CLASSIFIEDS

### ANNOUNCEMENTS

BUY NEW JERSEY FOR \$520! Place your 25-word classified ad in over 145 NJ newspapers! Call Diane Trent at 609-406-0600 ext.24, email dtrent@njpa.org or visit www.njpa.org. (Nationwide placement available) Ask About our TRI-BUY package to reach NY, NJ and PA!

### AUTOS WANTED

DONATE YOUR CAR, TRUCK OR BOAT TO HERITAGE FOR THE BLIND. Free 3 Day Vacation, Tax Deductible, Free Towing, All Paperwork Taken Care Of. 888-438-1090

### BUSINESS OPPORTUNITIES

ADVERTISE YOUR BUSINESS HERE! Place your 25 word Classified ad in over 145 newspapers throughout NJ for \$520. Contact Diane Trent 609-406-0600 ext. 24. www.njpa.org

### COLLECTIBLES

BUYING COINS- Gold, Silver and ALL Coins, Stamps, Paper Money, Entire Collections worth \$5,000 or more. Travel to your home. CASH Paid. Call Marc 1-800-488-4175.

### CONDOS FOR SALE

BANK FORECLOSURE! FLORIDA WATERFRONT CONDOS! SW Coast! Brand new upscale 2 bedroom, 2 bath, 1,675sf condo. Only \$179,900! (Similar unit sold for \$399,900) Prime downtown location on the water! Buy before 9/23/11 & get \$8,000 in flex money! Call now 1-877-888-7571, X 52

FORECLOSED!!! NEW FLORIDA CONDO! Only \$179,900! Similar unit sold for \$477K. Luxurious, new 1,700 sf 2BR, 2BA condo w/study in St. Augustine. Walk to clubhouse, 18-hole golf course, swim & fitness center, lighted tennis courts, 10-acre athletic park, underground parking garage, more. Must see! Call now 1-866-952-5346, x 80

### FINANCIAL

CREDIT CARD RELIEF \*\*\*\* FREE CONSULTATION \*\*\*\* Save Thousands of Dollars Out Of Debt In Months - NOT Years! Avoid Bankruptcy NOT A High Priced Consolidation Company Or A Consumer Credit Counseling Program CALL CREDIT CARD RELIEF 866-479-5353. Not Available in All States

To place a classified ad, call 908-668-0010 by noon Monday.

### FOR SALE

VONAGE Unlimited Calls in U.S. and 60 Countries! NO ANNUAL CONTRACT! \$14.99 For 3 Months! Then ONLY \$25.99/mo. Plus FREE Activation. Call 888-813-3989

### H.WANTED/TRUCK DRIVERS

ATTN: Exp. Flatbed, Reefer & Tanker Drivers: GREAT PAY/Freight Lanes from Presque Isle, ME. Boston-Leigh, PA. 1-800-277-0212 or www.primeinc.com

### LAND FOR SALE

Cozy Cabin on 5 Acres \$19,995. Beautiful woodlands. Our best deal ever! Call 800-229-7843 Or visit www.landandcamps.com.

NEW YORK STATE Cozy Cabin on 5 Acres \$19,995. Beautiful woodlands. Our best deal ever! Call 800-229-7843 or visit www.landandcamps.com.

### MISCELLANEOUS

AIRLINES ARE HIRING. Train for high paying Aviation Career. FAA approved program. Financial aid if qualified. Job placement assistance. CALL Aviation Institute of Maintenance, 877-564-4204

### MISCELLANEOUS

ATTEND COLLEGE ONLINE FROM HOME. \*Medical, \*Business, \*Paralegal, \*Accounting, \*Criminal Justice. Job placement assistance. Computer available. Financial Aid if qualified. Call 888-220-5975 www.CenturaOnline.com

Shari's Berries-Mouthwatering gourmet strawberry gifts fresh for all occasions! 100 percent satisfaction guaranteed. Delivered nationwide. SAVE 20 percent on Dipped Berries! Visit www.berries.com/cup or Call 1-888-804-0183

DISH Network delivers more for less! Packages starting at \$24.99/mo. Local channels included! FREE HD for life! Free BLOCKBUSTER® movies for 3 months. 1-866-944-6135

Reach over 1.4 Million Households! Place your 2x2 Display Ad in over 125 NJ weekly newspapers for ONLY \$1300. Call Diane Trent at 609-406-0600 ext.24, email dtrent@njpa.org or visit www.njpa.org. (Nationwide placement available) Ask About our TRI-BUY package to reach NY, NJ and PA!

NEED TO REACH THE PRESS? Send us your press release and we will do the rest! Fee. Call Diane Trent at 609-406-0600 ext.24, email dtrent@njpa.org or visit www.njpa.org.

### PUBLIC NOTICES

www.njpublicnotices.com - Subscribe to receive automatic notices: sheriff sales, foreclosures, RFP, bids for schools, town meetings, variances, etc.

### REAL ESTATE/OUT OF STATE

PENNSYLVANIA'S LAKE REGION 1 3/4 hour GWR 2 to 3 acre properties from \$34,900 Surrounded by 110,000 acres of State Land Great recreational area. Serene setting. Priced for immediate sale. Gorgeous Land. call (888)611-9037

Want statewide coverage for your classified ad?

Call 908-668-0010.

## BUSINESS/PROFESSIONAL/SERVICES

### ELECTRICAL

**On Time Electrical Contractor LLC**  
Residential • Industrial • Commercial  
No Job Too Small  
908-451-3313  
On Call 24 hrs.  
Fully Insured & Bonded NJ  
Lic #8854  
BILL RITCHEY

### FLOORING / CARPET

Carpet • Area Rugs • Tile • Hardwood • Laminate • Linoleum  
Residential & Commercial  
"We'll Bring Our Mobile Store to your Front Door!"  
**MY WAY CARPET**  
877-MY WAY CARPET .com  
AND FLOORING!  
MyWayCarpet.com 1-877-699-2922  
1-908-757-3470  
Repairs • Restretching • Binding • Custom Tile • Sanding and Refinishing  
www.Fine-Ants-Sing.com 0% No interest, No payments for 1 year

### LANDSCAPING

**Silver Creek Landscaping**  
SOUTH PLAINFIELD  
BRICK PAVERS • PATIOS & WALKS  
• LANDSCAPE PLANTINGS  
• SHRUB & TREE PRUNING  
• HYDRO SEEDING & SOD  
• MULCH / STONE / TOPSOIL  
• RETAINING WALLS  
• RESIDENTIAL & COMMERCIAL  
- FREE ESTIMATES -  
**908-756-7272**

### GRADUATE

**LAWN CARE**  
LAWN MAINTENANCE  
LANDSCAPE DESIGN  
Mulch Beds • Pavers  
Top Soil • Stone  
Commercial - Residential  
FREE ESTIMATES  
(732) 548-0752  
gradlawncare@yahoo.com

### MASONRY

**WAYNE P. SCOTT MASONRY**  
Piscataway Family Business  
55 Years  
FREE ESTIMATES  
Steps • Patios  
Walks • Repairs  
10% Summer Discount  
NJ State Lic # 13VH00096100  
**732-968-5230**

### PLUMBING/HEAT/COOLING

License #8741  
**Professional Plumbing, Heating & Cooling, Inc.**  
(908) 561-1941  
South Plainfield, NJ  
**FRANK MCCARTHY**

### REAL ESTATE

If you are thinking of buying or selling a home, think Young... Greg Young.  
20 Years Licensed New Jersey Real Estate Salesperson  
**Prudential** New Jersey Properties Moretti Division  
225 Maple Ave., South Plainfield, NJ 07080  
Greg Young Broker-Salesperson  
Specializing in the marketing & selling of residential real estate  
COPE-Certified Distressed Property Expert  
CRS-Certified Residential Specialist  
GRI-Graduate of the Realtor Institute  
908-755-5300 ext. 403 • cell 908-875-9910  
Email: Greg.Young@prudentialnewjersey.com  
www.prudentialnewjersey.com/Greg.Young

**Prudential** New Jersey Properties®  
Rose Marie Pelton  
REALTOR-ASSOCIATE  
South Plainfield Resident  
For Over 39 Years  
908-753-4450 X121  
(732) 653-0322  
Fax 908-753-0136  
RosePelton@att.net  
Prudential NJ Properties®  
659 Mountain Boulevard, Watchung, NJ 07069

### POOLS

Celebrating 25 Years in Business  
**McCarthy Contractors**  
Complete Pool Maintenance & Repair  
Pools~Ponds~Water Features  
We sell & install safety covers and do liner changes  
SALES AND SERVICE  
Blaise McCarthy  
Member of NSPA • 20 Years Exp.  
Fully Licensed & Insured • SOUTH PLAINFIELD  
Schedule your pool opening now! (908) 756-3120

### TREE / SHRUB

**DISCH TREE EXPERTS**  
Professional Tree & Shrub Care  
Plant • Feed • Prune • Spray  
Year Round Tree Program  
Land Clearing • Firewood  
Tree & Stump Removal  
Fully Insured, Free Estimates  
**24 HR EMERGENCY SERVICE**  
BILL DISCH • PRESIDENT  
(732) 968-5830 • (732) 803-7086 (cell)

### WINDOWS & MORE

**MW FREDERICKSON**  
WINDOWS PLUS  
RESIDENTIAL SERVICES  
♦ VINYL SIDING  
♦ WINDOWS & DOORS  
♦ SEAMLESS GUTTERS  
♦ GUTTER GUARDS  
♦ CUSTOM DECKS  
(732) 213-8295 • (866) 355-9393



## OPINION

South Plainfield Democrats



## JOBS, JOBS, JOBS

Democratic candidates Chrissy Buteas, John Sorrentino, and Paul McCullen believe it is the responsibility of government to help business prosper and do well. When it does, local people have good paying jobs, have the money to help the local commercial establishments and are willing to invest in their future. Government cannot, nor should it try to, employ everyone. That is not the answer. However, Chrissy, John and Paul know that government must lead in getting good businesses to come back into South Plainfield. Unlike the Republican candidates, the Democrats have better solutions for our problems. Chrissy, John and Paul want to build our ratable base, guarantee stable taxes and welcome good, clean businesses back to town.

The Democratic candidates pledge to organize an economic summit with business leaders, local business groups and organizations, public communication and newspaper organizations, educational leaders and local labor leaders. The purpose of the meeting will be threefold:

1) To review all existing ordinances and regulations that hamper business growth and opportunities in our town. We must create an environment where businesses want to relocate to South Plainfield. This will open up jobs for our residents.

2) South Plainfield is a hidden gem within our county and state. We must develop a

publicity campaign which highlights all the advantages our town has to offer to the greater business community. We have a highly educated and versatile workforce, immediate access to major highway and rail systems for commercial use, direct representation to state government through resident and Assemblyman Patrick Diegnan, and—in the future—a local governing council which will listen to and encourage business entrepreneurship.

3) We must establish a new business center in borough hall that will provide a forum for all our businesses to discuss ways to better the relationship between government and business. We want to access their expertise to better inform the mayor and council on ways to bring back jobs, fill up our empty store fronts and commercial buildings, and establish South Plainfield as the place to succeed.

Chrissy, John, and Paul understand that the future of South Plainfield hinges on reestablishing our economic stability. We do not need excuses for our problems; we need solutions. Let's not follow past mistakes; let's lead our town and our state into a brighter future.

Vote Democratic.

*The opinions expressed here are those solely expressed by the organizations submitting the articles. They do not necessarily reflect the opinion of the publisher; nor do we attest to their accuracy.*

## OPINION

South Plainfield Republicans



## Barletta, White & Frank: Results Count

Saying that results are what make the difference, Councilman Alex Barletta, Derryck White and Dick Frank this week pointed to their party's record

over the past two years and asked voters to compare it to the prior decade of Democrat control.

"If people compare the two records, they'll see a huge difference," said Barletta.

Under the new GOP majority, the numbers tell the story. Spending is down, borrowing is down, and South Plainfield has the best record on taxes in Middlesex County.

"The difference is a record of results," explained Frank, who said he wants to help keep those results going. "Under the Democrats, for a decade the budget went up every year. For the past two years under Republican control, spending is down both years."

"It's pretty simple," Barletta added. "The Democrats could not control spending. We did."

"The other side is making lots of promises and throwing lots of stones in their advertising, saying they can do better," added White. "But when given the chance, they couldn't."

The three candidates pointed to spending as an example. "The budget is down \$85,000

this year," explained Barletta. "And last year's budget was down \$358,000 from the year before. Few towns can say they cut spending two years in a row."

By contrast, when Democrats ran the council over the last decade, spending went up on average each year by over \$800,000.

"That's a huge contrast," explained Barletta. "And it's the same for borrowing. In 2009 when the Democrats ran things they borrowed about \$2.5 million. In 2010 the Republicans cut that by half a million dollars. This year borrowing will be even less."

"What's happening in South Plainfield is the opposite of what's happening everywhere else," explained White. "Look at the federal government. Spending and borrowing are exploding. The same is true under the county Democrats, who raised taxes 19% over the past two years."

"Compare that to South Plainfield, where spending and borrowing are down. At the same time, services have not been affected, and in many cases have improved."

"We want to improve on these results," added Barletta. "It's fair to ask the Democrats why they didn't cut spending when given the chance. In fact, the most important way to judge candidates is on their records. It's all about results. Our goal is to continue to deliver results."

## Advice for Caring for Trees in the Wake of Hurricane Irene

In the aftermath of Hurricane Irene, it's important for homeowners to assess damage and provide needed care for their trees, according to the nonprofit Arbor Day Foundation.

And in this case, patience is truly a virtue when dealing with storm-damaged trees. The urge to do something

immediately is strong, but people should try to be patient. As long as there isn't an immediate physical risk from a damaged tree, many times it's best to keep the tree for now and determine the course of action later.

If a tree is not a hazard, take some time to make sure it gets the care it

needs. In this case it's okay to wait a few weeks or months before a final decision is made on the fate of the tree.

A good rule of thumb on whether a tree can survive is it must still have at least 50 percent of its crown (branches and leaves). A tree with less than half of its branches remaining

may not be able to produce enough foliage to nourish the tree.

If a tree requires immediate attention, the Arbor Day Foundation recommends hiring a qualified arborist.

Qualified arborists can be found under the "Tree Service" section of most telephone directories. To find

an arborist certified by the International Society of Arboriculture, go to [www.treesaregood.org/findtreeservices/FindTreeCareService.aspx](http://www.treesaregood.org/findtreeservices/FindTreeCareService.aspx).

Information about how to care for trees following a storm can be found at [www.arborday.org/media/storm-recovery](http://www.arborday.org/media/storm-recovery).

- Affordable
- Select Decor
- Easy Terms
- Great Service



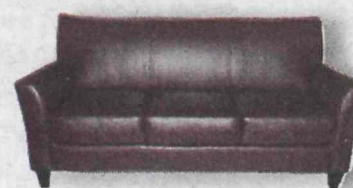
Next Day Delivery

Save \$\$\$

# Rental World



Living Rooms • Dining Room Sets • Beds  
Bedding Washers & Dryers • Refrigerators  
Televisions • Stereos • Electronic Games



DECORATIVE ITEMS • TENTS • PICNIC TABLES • CHAIRS

2 Locations in South Plainfield

488 Oak Tree Road • 2210 South Clinton Avenue

908-757-0700

The Best Deals!!