



Don't get left out... advertise in the borough-wide issue on September 2!

# South Plainfield Observer

C026\*\*\*\*CR LOT0001A\*\*C026 19 1\*\*\*  
SP PUBLIC LIBRARY  
2484 PLAINFIELD AVE  
S PLAINFIELD, NJ 07080-3531

VOL. 14, NO. 50

Member New Jersey Press Association

60 CENTS

AUGUST 19, 2011

## Barclays Golf Tournament Starts Next Week

SOUTH PLAINFIELD PUBLIC LIBRARY



The Barclays Golf Tournament hospitality center at Plainfield Country Club is nearing completion.

—Photo by Louis Mormile

The Plainfield Country Club will be hosting the Barclays Golf Tournament during the week of August 22-29. As a result, South Plainfield will implement the following traffic patterns and road closures:

- Woodland Avenue between Oak Tree Road and Maple Avenue will be closed to all traffic. This section will be utilized by shuttle buses for the event. Residents of Woodland Avenue in the closed sections will be issued a parking pass to access their homes.

- Intersecting streets along Woodland Avenue in the closed section will be closed for the duration of the event at Woodland Avenue. Residents on these roads can access their homes only by way of Park Avenue. The streets that will be closed are: Francesca Court, East Fairview Avenue, East Crescent Parkway and Dolores Avenue.

- Woodland Avenue and the intersecting streets between Maple Avenue and Sprague Avenue will be open to vehicular traffic.

- Old Raritan Road between Maple Avenue and Inman Avenue will be closed to all vehicular traffic.

Detours will be posted to aid motorists' travel around the area. Northbound traffic on Woodland Avenue from Oak Tree Road will be detoured north on Park Avenue to

South End Parkway in Plainfield. Southbound traffic on Woodland Avenue will be detoured at South End Parkway in Plainfield to southbound Park Avenue.

Parking will be prohibited on the north side and/or east side of all roadways between Park Avenue and Woodland Avenue. Borough Ordinance #1461 prohibits off-street parking in all zones, (residential, commercial, business, industrial, etc.) in the front yard setback area, except in areas designated for parking which shall be surfaced with asphalt, concrete or stone.

Motorists are advised to seek other routes of travel and to avoid the area as traffic delays are expected.

New Jersey State Administrative Code 8:24 prohibits selling or serving food or beverages from any residence or home. NJAC 8:24 allows selling or serving food or beverages from retail food establishments only. Borough zoning codes also prohibits conducting a retail business from a residence.

Police will post seven message boards throughout the borough to provide traffic advisories to motorists.

**10,000 spectators are anticipated during the first couple of days of the tournament; 20,000 are expected on the weekend.**

## How Will It Affect You?

### FAQ's

**Q. Will Woodland Avenue be open during the tournament?**

A. Woodland Avenue will be closed to all but bus traffic between Oak Tree Road and Maple Avenue. Woodland Avenue will be designated a one-way traffic street northbound for the duration of the tournament.

**Q. Will Woodland Avenue between Maple Avenue and Sprague Avenue be open to traffic?**

A. Yes. While this section of Woodland Avenue is planned to be open for vehicular traffic, we strongly encourage motorists to avoid this area as traffic delays are expected. Southbound traffic on Woodland Avenue, coming from Plainfield, will be diverted westbound on Maple Avenue only. Motorists will not be permitted to turn left onto Old Raritan Road.

**Q. Will detours be set up to aid motorists?**

A. Yes. Traffic from Oak Tree Road in South Plainfield and Edison seeking to travel north on Woodland Avenue will be detoured northbound on Park Avenue. They will then be

detoured east on South End Parkway in Plainfield and back onto Woodland Avenue. Traffic traveling southbound on Woodland Avenue in Plainfield will be detoured west on South End Parkway and then south onto Park Avenue.

**Q. Will Inman Avenue in Edison be open for vehicular traffic?**

A. Tentatively, yes. Westbound traffic on Inman Avenue will be diverted north on Old Raritan Road into Scotch Plains. The eastbound lanes of Inman Avenue will be utilized by the shuttle buses for the event. Should tournament play necessitate it, Inman Avenue will be closed and detours posted.

**Q. Can I get to the Care One at the Highlands facility on Inman Avenue or the Woodlands Nursing Home on Woodland Avenue?**

A. Yes.

**Q. I live on Woodland Avenue on one of the side streets off of Woodland Avenue in Edison. How do I get to my home?**

A. Residents that live on Woodland Avenue or on a side street on the Edison side of Woodland Avenue will be issued passes for their vehicles. They must display the passes to police officers at the traffic post at Oak Tree Road and Woodland Avenue.

**Q. I live on a side street on the South Plainfield side of Woodland Avenue. Will my street be open?**

A. No. All intersecting streets on the South Plainfield side of Woodland Avenue will be closed during the tournament. Francesca Court, East Fairview Avenue, East Crescent Parkway and Dolores Avenue will be closed at Woodland Avenue. Residents on these and surrounding streets must

access the area via Park Avenue.

**Q. I live on a side street that intersects Woodland Avenue north of Maple Avenue. Will my street be open?**

A. Tentatively, yes. We will monitor the pedestrian and vehicular traffic in this area. Should the traffic flow or safety concerns require us to close this section of Woodland Avenue, all intersecting side streets will be closed at Woodland Avenue. Residents must access these streets via Park Avenue.

**Q. Can I park on my street?**

A. It depends. If you live on any street between Woodland Avenue and Park Avenue, parking will be prohibited at all times on the north and/or east side of these streets. These parking restrictions are in place to allow emergency vehicles access to these streets. Police officers will be assigned to patrol these areas for violators who will be summoned and towed.

**Q. Ordinance #1461 prohibits parking on my lawn area, but can I rent parking spaces in my driveway if it is paved, concrete or stone?**

A. Yes. But again, we prefer spectators to utilize the designated off-site parking at the Oak Ridge Golf Course in Clark and take the shuttle buses to the event.

**Q. Can I sell food or beverages from my home or yard?**

A. No! New Jersey Administrative Code prohibits the sale of food or beverages from any place other than a licensed retail food establishment.

**Q. Will trash collection, mail delivery and other services, (landscapers, etc.) continue if I live on Woodland Avenue and the surrounding areas?**

A. Yes. These vital services will continue uninterrupted during the tournament. Police will permit access into the closed areas by these and other services.

### Who can you contact for more information?

Concerns or questions should be addressed to Police Chief James Parker at (908)226-7676 or Council President Raymond Rusnak at (908)561-7076. You may also visit the tournament website at [www.thebarclays.barclaysgolf.com](http://www.thebarclays.barclaysgolf.com) for details specifically concerning spectator parking, busing and the golf tournament. Additional information can also be found at the Township of Edison website, [www.edisonnj.org](http://www.edisonnj.org).



8 04879 18848 3



# Want to stay informed about the business of your Council and BOE?

# FYI

# Borough Council & BOE

Council meetings air on Comcast Channel 96 Mondays at 7 p.m. BOE meetings air on Thursdays at 7 p.m.

To purchase a complete copy of a council or BOE meeting, contact the Observer. (Check Comcast community bulletin board for last minute time changes.)

## council meetings

Meets twice a month on Mondays, \*except where noted.  
Borough Hall Council Chambers • Questions? 908-226-7605

|                       |                       |
|-----------------------|-----------------------|
| <b>Agenda Meeting</b> | <b>Public Meeting</b> |
| September 6 (Tuesday) | September 6 (Tuesday) |
| September 19          | September 19          |

All Agenda Meetings begin at 7 p.m. followed immediately by the Public Meeting, unless otherwise noted. Meetings of the Governing Body are held in accordance with the N.J. Open Public Meetings Act (N.J.S.A. 10:4-6 et seq.) in the Council Chambers at 2480 Plainfield Ave.

## planning board

Meets second and fourth Tuesday of the month, \*except where noted.  
Borough Hall Council Chambers, 7 p.m. Questions? 908-226-7641

Aug. 23, Sept. 13, Sept. 27, Oct. 11, 25, Nov. 1, \* Dec. 13\*

## zoning board of adjustment

Meets second and fourth Thursday of the month, \*except where noted.  
Borough Hall Council Chambers, 7 p.m. Questions? 908-226-7641

Aug. 25, Sept. 8, Sept. 22, Oct. 13, Oct. 27, Nov. 10\*, Dec. 8\*

## board of education

Meets Wednesdays at Roosevelt Administration Gymnasium on Jackson Ave.  
Committee of the Whole meetings (begin at 6:00 p.m.)

Sept. 14, Oct. 12, Nov. 9, Dec. 14, Jan. 11, Feb. 8, March 14 and April 4.

Regular Public Meeting (begin at 7:30 p.m.) Sept. 21, Oct. 19, Nov. 16, Dec. 21, Jan. 18, Feb. 15, March 21 and April 11.

## BOE curriculum/technology/student activities

Meets once a month on Wednesdays at 4 p.m. in 2nd floor conference room,  
Roosevelt Administration Building on Jackson Ave.

## BOE buildings & grounds

Meets second Monday of the month at 7 p.m., 2nd floor conference room,  
Roosevelt Administration Building

## cultural arts commission

Meets the third Tuesday of the month at the PAL at 7:30 p.m.

No meeting in August – Sept. 20, Oct. 18, Nov. 15, Dec. 20

## library board of trustees

Meets once a month on the second Tuesday, at the library at 7 p.m.

Sept. 13, Oct. 11, Nov. 8, Dec. 13

## recreation commission

Meets once a month on the second Tuesday of the month, except July and August

PAL Building, Maple Ave. 7 p.m. Questions? 908-226-7716

No meetings in August – Sept. 13, Oct. 11, Nov. 8, Dec. 13

## taxpayers advisory group

The Taxpayers Advisory Group (TAG) meets the fourth Tuesday of every month at  
Borough Hall, 2480 Plainfield Ave. at 7 p.m. Questions? 908-769-0786.

## site plans sub-committee

Meets once a month on the third Tuesday of the month, 7 p.m.

Sept. 20, Oct. 18, Nov. 15, Dec. 20

## environmental commission

Meets once a month (second Wednesday) Borough Hall Conference Room, 8 p.m.

Questions? 908-226-7621

## business advisory group

Meets once a month (first Wednesday) Borough Hall Council Chambers, 5 p.m.

## ad hoc alternative truck route committee

To be announced. 7:30 p.m. in the Senior Center Questions? 908-226-7605

# In My Opinion

Opinions expressed in this column are not necessarily those of the publisher, nor do we guarantee accuracy.

## To the Editor:

As we are all aware, the trial of the 2009 Labor Day slasher has ended. I would like to thank the South Plainfield Police Department, the Middlesex County Prosecutor's office, the State Police and any other agency that relentlessly pursued the suspect. A special thanks also goes out to assistant Prosecutor Christopher Kuberiet and his staff who worked tirelessly hours to secure a conviction on all charges.

Next, I would like to thank David Donatelli for well over 30 years of service to our town. David was the most conscientious, hardworking and motivated employee this town has ever had. He has retired and will be sorely missed.

In closing, I ask that everyone keep the entire Donatelli Family in their thoughts and prayers. God Bless.

**ROBERT CAPPARELLI,  
GENERAL SUPERVISOR D.P.W**

## To the Editor,

On June 12 we held our eighth annual sold out COACHES CARE golf classic at Heron Glen Golf Course. As is usually the case with our outings, the weather played a small part, with a huge 20 minute downpour, but all the golfers, and quite spectacularly, all of our volunteers on the course, stayed out on the course, and that played a tremendous part in our success. The golf committee and board consists of Rich Little, Tony Cassano, Charlie Decker, Keith Heckel, Chris Hubner, Kurt Ullom, Bill DeNizio, and Ted Tucker. These gentlemen work feverishly throughout the year to ensure that all the participants are treated to a first class affair.

The backbone of the charity is Thom Lanza, who has made Coaches Care his passion. Not a day goes by where he isn't thinking about how to better all that we do. His vision for the outing keeps me going, and I thank him for his ability to keep each year fresh and exciting. To the people who volunteered their time to be witnesses and salespeople on the par threes (Laura McCreesh, Toni Moretti, Gi Sofka, Chris Hubner, Chris Pennisi, Maryanne Decker, Colleen Hubner, Kathy Thomas, Alyssa McCreesh,

Adam Franczak and Carol Ullom), I thank you for enduring the thunder and making the day a success.

Auction prizes were donated by Mohn's Florist, Charlie Decker III, Nancy O'Shea and Kobo Products, New York Mets, Bobby Ring, Glenn McCreesh, Vinnie Hager and JGS Insurance, James Fiorentino, Joe Yeh-wais, Arnold Palmer Enterprises, Al Leavett and Charlie Decker Jr.

The following businesses and people were hole sponsors, South Plainfield Golf Association, Clarkin and Vignuolo, Lanza and Lanza, Harris Realty Corp, Thermal Service, Sales Team Solutions, R.T Tech Electric Company, Lynn Reed, Andy and Eva Singer, Gray Metal Products, McCriskin-Gustafson Funeral Home, Moretti Realty, Kraus and Naimer, Nischwitz and Co., East Coast Title Agency, Santoro and Santoro, Haisch's Bakery, Annabelle Lanza, Ciccio's Pizza, Goodwin Associates, Downes and Associates, Oak Tree Discount Wines and Spirits, Bagel Pantry, Len and Lisa Olim, Nicholas Boxter, HBC Electric, Ron Pacconi, Joan McCreesh, Witty's Liquors, M and R Miller Auto Gear and Parts, Turtle and Hughes and Bill Mosca.

Putting contest sponsors were Duro Dyne and EWC Controls. Chipping sponsor was Frank's Automotive. The breakfast sponsors were the Bagel Pantry and Haisch's Bakery who donated bagels and doughnuts along with Gerber Metal. The hole in one car was donated by Flemington Car and Truck Country. JFK Medical Center donated the golf shirts given to all golfers and volunteers. The Silver Sponsor was The Newmark Schools in Plainfield and Carteret. The Gold Sponsors were Southwark Metal Mfg. and Dunphey-Smith Company. The Platinum sponsor was L and F Martin Landscape Co. The following businesses donated door prizes for the golfers, Sherbans, Paulos Barbeque, Giakas Cleaners, Mary Jane DeNizio and Ski Setting, Hometown Hero's, Pizza Stop, Capelli's, Mr. Subs, Red Lobster, Cindy Michaels Jewelry, Munchies, Bagel Pantry, Kathy Smith and G3 Display, New York Jets and Giants, New York Rangers, Michael Dixon, New Jersey Devils, The Red Bulls,

## Submit Your Letters to the Editor

Send your letters to South Plainfield Observer, 1110 Hamilton Blvd., Suite 1B, South Plainfield, NJ 07080, or fax to 908-668-8819, or via email: spobserver@comcast.net. **Deadline is Monday, 5 p.m.** Letters must be accompanied by a name and telephone number for verification. Limit letters to no more than 200 words. We reserve the right to refuse a letter, to edit for clarity or length, and to limit the number of letters submitted on the same subject. Submission is not a guarantee of publication. We do not accept anonymous letters. Letters are strictly opinion.

Joan McCreesh, Mei Haus, Lobster Shanty, James Fiorentino, Joe's Crab Shack, Fedway, Mangia Bene, Tony's Pizza, Theresa's of Westfield, Groto Engineering Assoc., Frank Licato, Sal's Spirit Shoppe, Mike Alvarez, Columbia Bank, Dunphey Smith, Carolyn Allen and TD Bank, Carmen's Trattoria, and Imperial Deli.

I would also like to thank those who wish to remain anonymous, but without their support we would never enjoy the success we have had.

We expect to raise over \$28,000 this year, and all of those funds will be going to the Coaches Care Therapeutic Learning Center at JFK Medical Center which assists children recovering from brain tumors. To date, the charity has raised over \$280K to assist those children less fortunate. Eleven years ago I came up with an idea to assist children with some form of medical problems. The idea was the easy part, but it has taken hundreds of people to see the idea to fruition. I am fortunate to be surrounded by some of the most giving people and know that none of this would be possible without all of the people mentioned. There was a stimulus to the forming of the charity back in 2000, and each year our prayers are answered. To RH, a congrats and good luck as a Ram. To pop, thanks for keeping the rain to a minimum and for bringing friends and family together. We look forward to seeing you all on Saturday June 9, 2012.

**TOM MCCREESH**

## To the Editor:

This will be my ninth year participating in the MS 100 Bike Tour as  
(Continued on page 10)

# BUYING ALL COINS, PAPER MONEY, SCRAP GOLD, STERLING SILVER, AND PRECIOUS METALS



References Available Upon Request

**We Can Offer the Absolute Best Prices**  
on all your coins, currency & scrap gold.



Email: gregheim@njcoinbuyer.com

My top dollar offer is made up front! All transactions are strictly confidential and performed in a professional, straightforward manner. I have over 33 years of experience buying and selling collectibles. I am a member of the South Plainfield Business Association, and my family has

been residents of South Plainfield for almost 10 years.

**I will evaluate your material and provide you with a free VERBAL appraisal (Call for details)**

**GREGORY S. HEIM, LLC**

**Full-Time Coin Dealer and Professional Numismatist**

**908-405-6408**

**CALL ANYTIME**

(If no answer, leave message.) I am available for appointments every day of the week from 8AM-8PM.

**www.njcoinbuyer.com**



LIFE MEMBER: American Numismatic Association, Garden State Numismatic Association, Watchung Hills Coin Club (original member).  
MEMBER: Early American Coppers Club, Numismatic Literary Guild, Colonial Coin Collectors Club, NJ Numismatic Society

- 10K-22K unwanted gold jewelry and scrap gold.
- ALL UNITED STATES COINS
- 1935 and before Silver Dollars
- 1964 and before United States 90% silver dimes, quarters, and halves
- 1965-1970 United States 40% silver half dollars
- 1958 and before cents (aka "wheaties" and Indian Head cents)
- All U.S. paper currency (e.g. Silver certificates, gold certificates & Red Seal \$2 bills)
- All foreign coins and paper money
- Gold, Platinum, Palladium & Silver Bullion
- Sterling silver (forks, knives, spoons, trays, etc.) as long as it is marked "sterling" or "0.925."
- United States & Foreign Proof Sets, Mint Sets, and Commemorative sets (government and non-government issued)
- Quality, Vintage Sportscards (generally 1975 and before) & selected sports memorabilia

**You will always receive a base quote on all of the items that I buy (i.e. \$25 & up).**

# South Plainfield Observer

The South Plainfield Observer is published weekly on Fridays by G&G Graphics Inc.

How to Reach Us



1110 Hamilton Boulevard, Suite 1B, South Plainfield, NJ 07080  
Ph: 908-668-0010 • Fax: 908-668-8819

Email: spobserver@comcast.net  
www.spobserver.com

**EDITORIAL**  
908-668-0010

**CIRCULATION**  
To subscribe to the Observer call (908) 668-0010

**ADVERTISING**  
Display (908) 668-0010  
Classified (908) 668-1258

|                                    |                          |                                 |                               |
|------------------------------------|--------------------------|---------------------------------|-------------------------------|
| Publisher/Editor-in-Chief.....     | Nancy Grennier           | Production Assistants.....      | Barbara Smith,                |
| Associate Publisher.....           | Wayne Grennier           |                                 | Kelly Stashko, Lindsay Barton |
| Art Director/Associate Editor..... | Susan Kaneps             | Contributing Photographers..... | Louis Mormile                 |
| Staff Writer/Photographer.....     | Patricia Abbott          |                                 | Don Hunsinger                 |
| Staff Writer.....                  | Libby Barksy             | Advertising Sales.....          | Jane Dornick, Jean Fultz      |
| Editorial Assistants..             | Jane Dornick, Jean Fultz |                                 | Roxanne Cortese               |

The South Plainfield Observer (U.S.P.S. 018253) is published weekly, except Thanksgiving week. Second class postage paid at South Plainfield, New Jersey 07080-9998. Postmaster: Forward change of address orders to G&G Graphics Inc. 1110 Hamilton Blvd., Suite 1B, South Plainfield, NJ 07080-2004. Subscription rates \$29.95/year in South Plainfield; \$34.95 year out of town.

## SUBMIT YOUR ARTICLES

We encourage the submission of stories and photos. To have an article published: Type (double spaced) the article and mail, email or fax. Include name, address and telephone number. **Deadline for submission is Monday, 5 p.m.**

## LETTERS TO THE EDITOR

Submit letters to the editor by mail, email or fax. Letters should not exceed 200 words. We reserve the right to edit for clarity or length. Letters must include name and phone number, for verification.

To comment on the content or to suggest a story idea, contact the editor at (908) 668-0010.

The publisher is not responsible for typographical errors.





Borough CFO Glenn Cullen, Police Chief James Parker and Asst. Supervisor DPW Rich Ritchey with the first map created of South Plainfield in 1929 following the borough's incorporation in 1926.

## Borough Hall Basement Cleanup Uncovers Hidden Treasure

By Libby Barsky

An unexpected treasure was discovered recently by members of the Department of Public Works during a cleanup of the Borough Hall basement.

The cleanup led to the discovery of an historic 42" by 52" map of the Borough of South Plainfield drawn by then-borough engineer, Lewis T. Churchill CE, in 1929.

"It was the first official map of South Plainfield made after the borough was officially incorporated in 1926," commented Chief Financial Officer Glenn Cullen. The map is now hanging on wall outside of the mayor's office.

The basement cleanup took place after Police Chief James Parker said the police department needed space for a secure evidence room. He sought the help of Robert Capparelli, supervisor of the Department of Public Works Department, to clear out the basement. For many years the basement had been used for storage, including files and machinery. "We found out of date vending machines in the basement," Capparelli explained.

Capparelli and DPW Assistant Supervisor Rich Ritchey, along with a small crew, tackled the clean up and moved items into a trailer parked near the building provided by Halls Trucking. During the clean up, the map was discovered encased in a wooden frame. A sheet of glass held the map to the frame and protected it from the dirt and mold which had formed over the glass during its many

years in storage.

A framing expert was called in to determine how to preserve the map. Noting the age and fragility of the paper the map was drawn on, as well as some water damage to the bottom portion, the expert cautioned against removing the map from the frame as it could possibly fall apart while being transferred.

Ritchey took on the project of making the map visible. His first job had been working as a carpenter for Caparo's Cabinets when he attended the first cooperative education class offered in South Plainfield High School in 1968.

Ritchey used a single-edge razor to clean off the dirt and mold embedded on the glass. He filled all of the small holes found in the wooden frame before sanding it. He applied a sealer on the wood and painted the frame three times.

Once the map was ready to be hung, the next step was to find a space where it could be displayed to best advantage for public viewing. According to Cullen, the first choice to display the map was in the courtroom where the council meets and where the photos of past mayors are displayed, but a suitable spot could not be found. After searching for another visible spot to hang the map, Cullen decided on the space on the outside wall of the mayor's office. The location for the historical map also adds a decorative bonus to the area since the frame's color matches the wood of the cabinet sitting below it.

## Anthony Cole Found Guilty on Four Counts in Labor Day Throat Slashing

Anthony K. Cole, 25, of Woolworth Avenue, was found guilty of the attempted murder of retired Department of Public Works (DPW) employee David Donatelli after the Labor Day fireworks display in Spring Lake Park on September 7, 2009.

Following his arrest on December 16, 2009, Cole was formally charged on April 21, 2010 with attempted murder, unlawful possession of a weapon, possession of a weapon for an unlawful purpose and hindering his apprehension after fleeing the

scene. A separate indictment charged Cole with a count of certain persons not to have weapons. He was prohibited from having a weapon since he had been found guilty and sentenced to a five-year term for committing an aggravated sexual assault in Edison in 2001. He was found guilty by a jury on all counts on August 12.

An investigation by the South Plainfield Police Department showed that Donatelli, 53, was approached from behind by Cole who cut his neck with a knife as he was shutting off the park lights shortly before 8:48 p.m.

Testing revealed the victim's blood was on the outside of his gloves and Cole's DNA was retrieved from the inside of each glove.

Donatelli was taken to Robert Wood Johnson University Hospital in New Brunswick where he underwent emergency surgery for his injury.

"It truly is a great day," said Deputy First Assistant Prosecutor Christopher Kuberiet, who oversees the Middlesex County Gangs, Guns and Drugs Task Force. "This Labor Day should take on a new meaning for the citizens of South Plainfield." He credits the "great police work, dedication and commitment" for the favorable outcome in the trial.

Cole, who remains in custody, is scheduled to be sentenced to up to 26½ years in a New Jersey state prison when he appears in court before Superior Court Judge Bradley Ferencz on Monday, Oct. 31.

## Volunteer Instructor Charged With Sex Assaulting 17 Year Old

Middlesex County Prosecutor Bruce J. Kaplan and South Plainfield Police Chief James Parker announced Tuesday that a religious instructor from Brooklyn had been arrested and charged with sexually assaulting a 17-year-old female.

Matthew Nesbitt, also known as Islam Abualwaan, 26, was arrested on August 13 at about 1 a.m. in Piscataway, with the assistance of the Piscataway Police Department, and was charged with one count of sexual assault.

Nesbitt is being held at the Middlesex County Adult Correction Center in North Brunswick in lieu of \$200,000 bail. He will be required to post the full amount, rather than 10 percent, before he can be released from custody.

Nesbitt was arrested after Investigator Robert Torrisi of the Middlesex County Prosecutor's Office and Det. Christopher Colucci of the South Plainfield Police Department determined that he sexually assaulted the female in Piscataway on July 15.

At the time, Nesbitt was volunteering as an Islamic studies instructor at the Al-Minhaal Academy in South Plainfield. He began there in March, but was dismissed at the end of the school year in June.

Anyone with information on this, or any similar incidents, is asked to contact Investigator Torrisi of the Middlesex County Prosecutor's Office at (732) 745-3636, or Det. Colucci of the South Plainfield Police Department at (908) 755-0700.

## Resident Charged with Endangerment

When officers responded to a home in the 300 block of Hancock St. on August 10 at 12:27 a.m. on a call of an activated residential alarm, they encountered an adult female engaged in a verbal argument with an adult male. The female told officers that she was confronting the male because he was allegedly having a sexual affair with her 15 year-old brother.

The male, identified as Frank D.

Errington, 38, had allegedly sent sexually explicit photographs and text messages to the juvenile male.

Errington was charged with endangering the welfare of a child. Additional charges are expected to be filed pending the outcome of the continuing investigation.

Errington was released on \$25,000 bail set by Municipal Court Judge Spencer Robbins.

### CORRECTION

In last week's *Observer* in the article entitled, "Tiger Sharks Attack Blue Dolphins," Cristian Butrico (11/12) placed second for the 100M freestyle. We regret the error.

### BRING IN THIS AD & GET

**ONE DOZEN BAGELS \$5**  
FOR ONLY \$5

908-222-4010

Designer Bagels & Deli

Golden Acres Shopping Center  
692 Oak Tree Ave., S. Plainfield



- Ballet • Pointe • Tap
- Jazz • Hip Hop
- Contemporary/Lyrical
- Preschool Classes
- Competition Company

CELEBRATING OUR  
22<sup>ND</sup> SEASON!



2601 Hamilton Blvd.  
(1 Block from the Car Wash)  
South Plainfield, NJ 07080

(908) 756-5422

Compare Our Tuition  
Starting @ \$50/month

**Fall Classes  
Now Forming!**

Register In-Person  
Thursdays 4-7pm  
Aug. 18/25 & Sept. 1/8

For more info visit  
[spotlightondance.org](http://spotlightondance.org)

**Prudential** The Strength of Teamwork, the Reputation for Results.  
New Jersey Properties  
Moretti Division  
Andrea Lacerda, Jesse Lacerda  
Sue Espin, Michele Leavy  
South Plainfield's Premier Real Estate Team  
225 Maple Ave., South Plainfield, NJ 07080  
Bus: (908) 755-5300 ext. 302  
Cell: (908) 578-1166  
The Lacerda Team Homes@LacerdaTeam.com  
www.LacerdaTeam.com

**Image is Everything!**  
Landscaping Supplies & Nursery  
• Shrubs • Playground & Root Mulch  
• Topsoil Seed • Erosion Products  
• Weed Mat • River Red Stone & Stone Dust  
• Large Selection of Small Engine Parts & Landscaping Supplies & More  
**ALL SLATE & FIELD ON SALE**  
Any Paver Job booked before July 15 & done in August will receive a **FREE CIRCLE** or an additional 5% off  
**All Plants 30% off**  
**NEW IMAGE** Landscaping & Lawn Care  
Over 20 Years Experience  
FULLY INSURED • FREE ESTIMATES  
Visit us to see all the products available for your landscape projects.  
Do it yourself or let the professionals do it for you.  
OPEN 908-822-1000 ALL MAJOR CREDIT CARDS ACCEPTED  
7 DAYS email: newimagescott@yahoo.com • Delivery available CONTRACTORS WELCOME

**KAPE** INSURANCE AGENCY  
Your neighborhood agent since 1961  
510 Hamilton Blvd.  
So. Plainfield, NJ 07080  
908-757-6666 FAX 908-561-0032  
www.kapeinsurance.com  
Business - Auto - Home

**DELI SANDWICHES!**  
**ORDER SALADS FOR LABOR DAY NOW!**  
**SUBS! WRAPS!**  
\*\*\* FREE DELIVERY TO YOUR HOME! \*\*\*  
**#1 HOMETOWN HEROS**  
340 Hamilton Boulevard  
908-755-HERO (4376)  
www.hometownherosdeli.com



# events

## Around Town

### SPHS Class of 1976 To Hold Reunion

August 20

South Plainfield High School Class of 1976 will hold their 35th reunion on Saturday, Aug. 20 with a rain date of Sunday, Aug. 21.

For more information, email [sphsclassof1976@hotmail.com](mailto:sphsclassof1976@hotmail.com) or visit [classmates.com](http://classmates.com) or [facebook.com](http://facebook.com).

### Coffeehouse at Edison Valley Playhouse

August 20

Edison Valley Playhouse will present its second coffeehouse with a back-to-school theme on Saturday, Aug. 20 at 8 p.m. showcasing local talent, including acoustic performances, stand-up comedy, poetry and more. Tickets: Adults: \$12; students/seniors: \$10. Refreshments.

If you would like to perform, email [EVPCoffeehouse@gmail.com](mailto:EVPCoffeehouse@gmail.com).

### American Legion Flea Market

August 20

American Legion Post #243, located at 234 Oak Tree Ave., will hold a flea market on Saturday Aug. 20 from 8 a.m. to 3 p.m. Open to the public; spaces available at \$15. Call (732) 644-4376 for information.

### Senator Buono Will Visit Senior Center

August 24

Senator Barbara Buono will visit the Senior Center to discuss eye health and vision care on Wednesday, Aug. 24 at 10 a.m. Senator Buono will also hold a "mobile office," where seniors are invited to bring their concerns to the attention of the Senator and her staff.

This visit is designed to provide seniors with information, as well as offer a free vision screening to any senior.

### SPHS Freshmen Orientation

August 25

The South Plainfield High School Freshmen Orientation will be held on Thursday, Aug. 25 at 9 a.m. in the

high school auditorium. Students are asked to dress school appropriate. The program will end around 11 a.m.

A ninth grade parent meeting is Tuesday, Sept. 27 at 6 p.m. in the high school auditorium.

### Back to School Extravaganza

August 27

A back to school extravaganza (gifting back to school supplies for those in grades K through college), will be held on Saturday, Aug. 27 from 12 to 4 p.m. at The Tabernacle, 1253 New Market Ave. Light refreshments, giveaways and a motivational kick off by Youth Pastor Nancy Salter.

Registrar at [visittabnjback2school.eventbrite.com/](mailto:visittabnjback2school.eventbrite.com/). For more information, call (908) 222-9990 or by email [c.brewer@thetabernacle.com](mailto:c.brewer@thetabernacle.com)

### Adult School Bus Trip To U.S. Tennis Open

August 29

The South Plainfield Adult School is sponsoring a trip to the US Tennis Open in Flushing Meadow, N.Y. on Monday, Aug. 29. Bus leaves at 9 a.m. To purchase tickets, call (908) 754-4620, ext. 213.

### SPHS Athletic Booster Club Meeting

September 13

The South Plainfield High School Athletic Booster Club will hold a meeting on Tuesday, Sept. 13 at 6:15 p.m. before the "Meet the Coaches Night" in the high school cafeteria.

All parents/guardians of SPHS student-athletes are encouraged to attend this meeting and find out what we do to support them and the athletic programs.

### "Meet The Coaches Night" at SPHS

September 13

The South Plainfield High School Athletic Booster Club will sponsor "Meet The Coaches Night" on Tuesday, Sept. 13 at 7 p.m. in the high school cafeteria. All parents/guardians are encouraged to attend. Coffee and desserts will be provided.

Also, visit our table to join the Athletic Booster Club. Membership is only \$5 and helps support our student-athletes.

### Sacred Heart Parish Golf Outing

September 14

Save the date! Sacred Heart Parish will hold its second annual golf outing at Cranbury Golf Course in West Windsor on Wednesday, Sept. 14 with a 9 a.m. shotgun start.

For information, email [plorance@churchofthesacredheart.net](mailto:plorance@churchofthesacredheart.net).

### Senior Center Picnic

September 29

The South Plainfield Senior Center picnic will be held on Thursday, Sept. 29 at the senior center from 12 to 4 p.m. Tickets are \$15. Plenty of food: hamburgers, hot dogs, chicken, fries, onion rings and corn on the cob. Entertainment by Ian Gallagher. Purchase tickets at the senior center.

### 1961 Class Reunion

October 1

South Plainfield High School Class of 1961 will host their 50th reunion on Saturday, Oct. 1 at the Hilton Garden Inn at Raritan Center in Edison.

For more information regarding tickets and plans, email Brenda Belardo Ribar at [class1961sphs@gmail.com](mailto:class1961sphs@gmail.com).

### UNICO Celebrates 41st Anniversary

October 15

Plainfields' UNICO will celebrate its 41st anniversary of the Unification of Italy on Saturday, Oct. 15 from 6:30 to 11 p.m. at the senior center, located at 90 Maple Ave.

Entertainment by Marianna Giancarla Biribin and Steve Berger.

\$25 donation per person includes Italian food and soft drinks; B YOB.

For tickets, call Robert Bengivenga at (908) 753-0247 or Renato Biribin at (908) 561-6685. No tickets sold at the door.

### — Out of Town —

### Singles Dance Party

August 20

Steppin' Out Singles is hosting an upscale singles dance party on Saturday, Aug. 20 at 8 p.m. at the Woodbridge Hilton, GSP Exit 131A. Ages 40 and up; no jeans/t-shirts/sneakers/shorts. Admission: \$17.

For more information, call (732) 656-1801.

### Woodbridge WOWs Open Dance

August 21

Woodbridge Widows or Widowers will hold an open dance on Sunday, Aug. 21 from 7 to 11 p.m. at the Knights of Columbus Hall, Morrissey Ave. in Avenel. Light refreshments. Everyone is welcome. Admission: \$10 members, \$12 guests.

For more information call (732) 381-3255 or 908-757-0515.

### Open House at Temple Sholom

August 21

Temple Sholom of Fanwood/Scotch Plains will hold an open house on Sunday, Aug. 21 from 4-6 p.m. at the home of one of its congregants. Fun and informative; find out about the congregation and the benefits of membership. Children welcome. Meet current members, clergy and leaders; learn more about educational programs for all ages.

For more information or to register, call (908) 889-4900 or email [sholom@sholomnj.org](mailto:sholom@sholomnj.org).

## SENIOR CENTER Calendar

SENATOR BARBARA BUONO VISIT  
August 24 - 10 a.m.

ANNUAL SENIOR PICNIC  
September 29, 1-3 p.m. - \$15

GERMANFEST  
October 27, 8 a.m.-6 p.m. - \$60

HUNTERDON HILLS  
December 8, 4:30-9:30 p.m. - \$60

MONDAYS  
Crocheting ..... 9:30 am  
Yoga ..... 10:30 am  
Art Class ..... 11:30 am

TUESDAYS  
Bingo ..... 10 am-2 pm  
Ladies Group ..... 10 am

WEDNESDAYS  
Aerobics ..... 8:45 am  
Shopping ..... 9 am  
Line Dancing ..... 10 am  
Computer.. 10 am, 11:30 am, 1 pm  
Crocheting ..... 1 pm  
Tai Chi ..... 2 pm

THURSDAYS  
Active Seniors ..... 8:45 am  
Crafts Class ..... 10 am  
Computer.. 10 am, 11:30 am, 1 pm  
Exercise Class ..... 1:15 pm

Daily Activities: Morning coffee, pool, cards, board games, art, yoga and crafts. Lunch Served Monday-Friday.

Call (908) 754-1047 for more info or visit [www.southplainfieldnj.com](http://www.southplainfieldnj.com)

Senior Center is open daily 8 a.m. to 4 p.m. Closed Saturdays & Sundays.

### Oktoberfest/45th Beauty Pageant

August 21

The German-American Oktoberfest will be held at Schuetzen Park in North Bergen on Saturday and Sunday, Aug. 20-21. The 45th annual Little Miss Schuetzen Park Beauty Pageant will be held on Sunday. The pageant is open to young girls ages seven through 12 of German or part German ancestry.

For an application, call (201) 927-5898 or (201) 867-3585, ext. 249.

### Blackrose to Perform

August 27

Blackrose, a band performing classic rock and roll music and today's hits, will perform at Stagehouse Tavern, located at 366 Park Ave. in Scotch Plains on Saturday, Aug. 27.

### Depression/Bipolar Support Meeting

August 31

The Depression and Bipolar Support Alliance monthly meeting will be held on Wednesday, Aug. 31 at 7:45 p.m. at the Morristown Unitarian Fellowship, 21 Normandy Heights Rd. in Morristown. The public is invited.

For further local information, call (973) 994-1143.

## G.J. SCOTT Services

### GUTTER SPECIALISTS

- ✓ Cleaned
- ✓ Repaired
- ✓ Installed
- Roofing & Siding
- Soffits and Aluminium Trim

Call Chris for  
FREE ESTIMATE & Best Price!  
**732-424-0454**

# JOE FASANO

## 732.752.3555

### FREE ESTIMATES

# HEATING & COOLING

*We've got a special attraction for you....*

Ruud Super High Efficiency Air Conditioners and Furnaces - Paired Up For Peak Performance!



**IARRAPINO**  
Heating & Cooling

Commercial & Residential  
Air Conditioning & Heating  
Sales - Service - Installation

732-906-9111

Owner: Edward Iarrapino  
NJ Lic. # 13VH0566920



**LENNOX**

Call today for a no obligation Free Estimate!

**732-906-9111**

**95% AFUE**

90,000 BTU Lennox Furnace

**13 Seer**

3-Ton Lennox Condenser

Installed for \$3,900 (After Rebates)

**Get \$500 Federal Tax Credit**

up to \$400 Warm Advantage Rebate

up to \$500 Cool Advantage Rebate

up to \$1,350 LENNOX REBATE (Exp. 8/26/10)

up to \$900 Gas Rebate for ETown Customers

up to **\$3,650 TOTAL SAVINGS!**

12 Month Financing Available with Payments/Deferred Interest\*

\*Interest free if paid within one year. Requires minimum monthly payments.

## IN PERSON REGISTRATION

Monday, August 15 through Friday, August 19 from 5 to 9 p.m.

## THE PERFORMING ARTS CENTRE

AT


# JO-ANN'S DANCE STUDIO

4475 South Clinton Avenue, South Plainfield, NJ 07080  
(908) 561-5094 E-mail [JOANNinNJ@aol.com](mailto:JOANNinNJ@aol.com)  
Visit us at [www.Jo-Annsdancestudio.com](http://www.Jo-Annsdancestudio.com)

**Celebrating 33 Successful Years in South Plainfield!**

New This Year:

**HEALTH & FITNESS CENTER**



Join Us!

- Pilates
- Zumba
- Kickboxing
- Yoga • Strength & Abs

Classes available in all areas and all levels of dance

BALLET ★ POINTE ★ TAP ★ MODERNE ★ JAZZ

★ CO-ED HIP-HOP ★ MUSICAL THEATRE

PRESCHOOL AND COMBINATION CLASSES • YOGA/PILATES/KICK BOXING

• ADULT CLASSES IN ALL AREAS OF DANCE

CLASSES FOR OUR YOUNGER STUDENTS WITH SPECIAL NEEDS

• PRIVATE PIANO AND VOCAL LESSONS

A complete line of dance wear is available for your convenience

Jo-Ann Faulkner, Director • Tara Faulkner-Catalina, Artistic Director

*Walk in - Dance Out!*



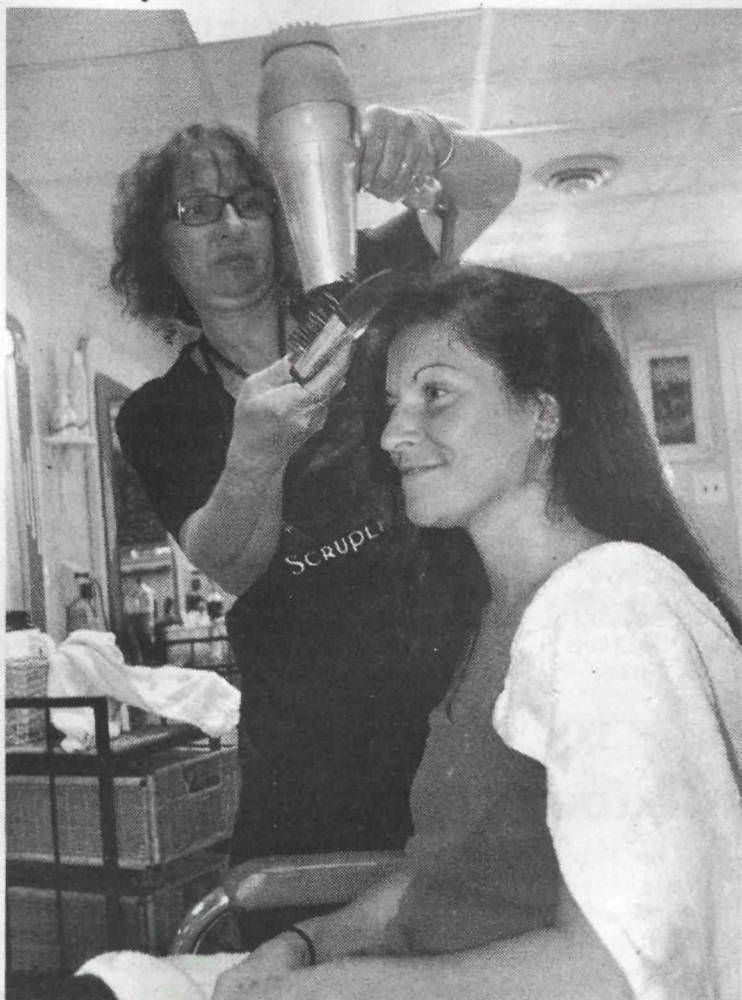
## Carousel Hair Celebrating 35th Anniversary With Complimentary Services and Gifts

By Patricia Abbott

Carousel Hair Salon owners Marty and Joe Papa will be celebrating their 35th anniversary on Sunday, Aug. 28. They plan to share their anniversary celebration with the community by handing out free gifts and services from 9 a.m. to 3 p.m. The salon will be offering free hair foils, refreshments such as light hors d'oeuvres, cakes, coffee, tea, juice, water and an opportunity to meet the staff. They will also have a number of door prizes, including a \$25 gift certificate to be used on any service in the salon.

There will be three professional cosmetologists working with Marty. Guests will have a choice of highlights, lowlights or vibrant colors. Lowlights are usually added to light hair to produce dimension, and highlights are added to dark hair for the same result—a subtle, but beautiful, change is sure to be noticed. For the more adventurous, Carousel will offer an array of urban shock colors: red, blue, yellow, pink, green or purple highlights for a funky look. Marty described the process. "The hair gets prelightened, then we apply the color. The color only lasts a short time and will need to be applied again. We will sell the color tubes for home use to refresh the reds, blues and greens. We will also instruct you on the care of your funk color or you can come back to the salon again." Foils are normally five dollars each, making this event a great opportunity for savings, as well as a fun afternoon. Kids can return to school with a cool new look and parents can save a few dollars. Note: children must be accompanied by an adult.

Marty noted that each client will have a choice of three to five foils depending on the desired result.



Marty puts finishing touches on daughter-in-law, Marjorie Papa's hair.

Colors are usually applied in one or two foils. The staff will take their time, paying close attention to each client. Marty will not be rushed due to a crowd. She is anticipating an overflow of guests, and those who cannot be accommodated will receive a gift certificate for the service at a later date.

The salon offers a wide array of services, including their newest—airbrush tanning and feather extensions. They also offer facials, pedicures, mani-

cures, wax treatments, makeup, facial and body waxing, roller sets, pin curls and waves, perms and much more. Carousel will soon be online with a full price list at [carouselhairandbodyworks.com](http://carouselhairandbodyworks.com).

"Come in and meet us. You will see how we have survived the demanding business of cosmetology for so many years. Thanks for the 35!" said Marty. Carousel Salon is located on Oak Tree Road, for more information or appointment call (908) 668-8397.

## Let's Not Forget 9/11



Mohn's Flowers is asking for your help in paying tribute to our servicemen and women on the 10th anniversary of 9/11.

They are asking that you bring a picture of someone you know who is serving in the armed forces in a 5x7 or 8x10 frame by Monday, Aug. 29 and write a little something about them. Mohn's is located at 2325 Plainfield Ave. Mohn's plans

to display the photos in their window during the month of September.

Also, if you lost someone on 9/11, please bring their photo in by August 29 and write a little something about that loved one. Mohn's will give you a yellow ribbon for you to place on your tree. Please join Mohn's in a tribute to all these wonderful people.

## Grand Opening Coming Soon...

## Hamilton Commons Welcomes "Pat-a-Cake Bakers"

Pat-a-Cake Bakers is a brand new kid-friendly baking class where your children can do all the work. In each class the lil' bakers are given the proper ingredients to use and with just a little instruction and guidance from the head bakers, they create their own edible masterpieces to take home and share with their families. The children are given all of the tools they will need to work with right down to their own chef hat and apron. It is so much fun!

They also offer convenient baking birthday parties in your own home

or in their location. The birthday parties take about 2½ hours. Children decorate aprons, measure and mix their own ingredients for their personalized cakes, share pizza and cupcakes and also have fun decorating their own edible masterpieces."

Pat-a-Cake Bakers will be located at 214 Hamilton Blvd., is now enrolling for September classes. Check their website at [Patacakebakers.com](http://Patacakebakers.com) for posted class times.

For more information, please contact [Patacakebakers@yahoo.com](mailto:Patacakebakers@yahoo.com).

## Fall Bus Trip to Trapp Family Lodge And Indian Head Resort

The Adult School is sponsoring a fall trip to the Trapp Family Lodge and Indian Head Resort, Tuesday, Oct. 11 to Saturday, Oct. 15.

The trip includes visits to the White Mountain Cider Co., Cabot Creamery, Ben & Jerry's Ice Cream Factory, Tuckerman's Brewery, Castle in the Clouds Estate and the Cog Railway.

Package includes round trip motor-coach transportation, one night lodging at the Trapp Family Lodge in Stowe, VT and three nights at Indian

Head Resort, Lincoln, N.H., four full breakfasts, one boxed lunch, four full dinners, afternoon tea and cookies, welcome and farewell cocktail receptions, several tours, ride to the top of Mt. Washington aboard the Cog Railway, all baggage handling, taxes and gratuities except for drivers, tour guides and chambermaids.

Price is \$898 per person double occupancy.

For full itinerary, questions or reservations, call Sheina at the Adult school at (908) 754-4620, ext. 213.

## Your Health MATTERS

A Source for Medical/Dental/Wellness Professionals

### CAREGIVER SERVICES

#### Marisol's Home Caregiver Services

Family owned & operated  
Providing affordable  
in-home care, daily or live-in

NJ State licensed, fully insured & bonded

Services include and are not limited to:

- Companionship
- Meal prep
- Personal care
- Laundry
- Transportation
- Errands
- Light housekeeping
- Medication reminder

Please call for a free  
in-home consultation.

Call (732) 912-9312

To advertise your  
business in Your  
Health Matters,  
call 908-668-0010.

### Advanced Chiropractic & Wellness Center



Dr. Norayr Ozbalik, DC  
19 years experience

- Neck pain, back pain, headaches, numbness, tingling, weakness & pain in arms and legs • Fibromyalgia • Sciatica
- Auto accident related injuries • Whiplash
- Advanced certification on whiplash injuries

904 Oak Tree Avenue, Suite O, South Plainfield

(908) 561-1777 Fax: 908-561-9711

[www.drozbalikchiropractic.com](http://www.drozbalikchiropractic.com)

Most major medical insurance & Medicare accepted

### DURHAM DENTAL CENTER

COSMETIC & GENERAL DENTISTRY

281 Durham Avenue, South Plainfield (908) 791-0900

EXAM & CLEANING  
X-RAYS

ONLY \$79.99  
REGULAR \$255

ZOOM IN OFFICE  
BLEACHING

ONLY \$199.99  
REGULAR \$599

DURHAM DENTAL CENTER

DURHAM DENTAL CENTER

MAY NOT BE COMBINED WITH ANY OTHER COUPONS OR DISCOUNTS. NEW PATIENTS ONLY. EXPIRES 9-2-2011

MAY NOT BE COMBINED WITH ANY OTHER COUPONS OR DISCOUNTS. EXPIRES 9-2-2011

Dr. Loay Deifallah, DDS • Most Insurance Accepted • Se Habla Espanol

### Scooters from Twin City Pharmacy & Surgical

Make a wonderful gift!



Our team of mobility experts will help find the Scooter that's right for you.

If you have any questions or want to discuss special requirements, please contact us directly and our team of mobility experts will help find the Scooter that's right for you. Prices begin at \$799 and there are numerous options to choose from.

If qualified, Medicare may cover part of the cost of your scooter. Your supplemental insurance could cover the remaining balance allowing a ZERO cost to you. This also depends on the type of policy you have and whether or not we are listed as providers for this insurance company. Our staff will be more than happy to assist you in any questions you may have concerning insurance.

### Twin City Pharmacy & Surgical

Telephone: 908-755-7696. Fax: 908-755-6003.

1708 Park Ave South Plainfield

Bill Ashnault RPh.—Owner • Sandy Severini—Owner.  
Tom Cassio Jr.—Owner • James Kim RPh.

24 Hour Emergency Care Service—Free Delivery

### Your Health Matters to Us.

Free Delivery

Regional Hospice & Home care provider

- Flu and Pneumonia Shots
- Major medical & Medicare billing available
- Hospital beds
- Wheel chairs
- Walkers
- Diabetic, Surgical & Ostomy Supplies
- Wound Care
- Oxygen

## The Observer

Delivering more South Plainfield news than any other source.



To subscribe, call 908-668-0010.



## Be a Part of the Labor Day Parade

South Plainfield's 54th Labor Day parade will be held on Monday, Sept. 5. This year's theme is "Honoring Our Heroes."

The parade is just one part of the daylong events. The annual community picnic will be held on the front lawn of the Middle School with live musical entertainment, food, games, rides and more. It's the perfect opportunity for businesses to meet the community. A great turnout is anticipated. Space is limited. Participants are advised to return a completed application and the appropriate check donation as soon as possible so as many vendors as possible can be accommodated.

Applications may be picked up at Borough Hall, 2480 Plainfield Ave. between 8 a.m. and 4 p.m. Applications, along with check or money order made out to the South Plainfield Rescue Squad or the South Plainfield Volunteer Fire Department, should be mailed to The Public Celebrations Committee, Attn: Debbie Leporino, Borough Hall, 2480 Plainfield Ave., South Plainfield, N.J. 07080. Vendors who arrive on the day of the parade who failed to send in an application will be denied admission.

Vendors must arrive between 7 and 7:30 a.m. at the middle school as roads will be closed shortly thereafter. The application only reserves a designated spot at the middle school. Vendors must provide their own tables, chairs, etc. No vehicles will be allowed on the middle school lawn or sidewalk area.

Applications received after August 12 will require an additional \$50 donation.

For more, email Leporino at SPLaborDayParade@aol.com, or log on to the borough website, southplainfieldnj.com.



South Plainfield Historical Society quilt raffle tickets are now on sale. The raffle takes place after the Labor Day parade.

## Historical Society to Raffle Quilt on Labor Day

The South Plainfield Historical Society annual quilt raffle is underway. This year's selection is the Terra Lone Star in Common Amish Quilt and measures 97 inches by 111 inches to fit your queen size bed. The Lone Star is a collection of earthtones, set in the center of a patchwork of browns. The quilt is from Lancaster County, and was handquilted with approximately five handquilted stitches per inch.

A combination of pleasing earthtones make this Terra Lone Star in Common Quilt a beauty that will shine in your home. Quilting is a way for the Plain People to express delight in the beauty

of the world they live in, and stars are a common motif utilized.

The quilt will be on display in the South Plainfield Public Library for the month of August with the raffle taking place after the Labor Day parade at the Middle School. Please stop by the library to check out the quilt and purchase your tickets. Tickets may also be obtained from any Historical Society member or by visiting Nicastro's Garage on Hamilton Boulevard.

To purchase tickets, call Bill Tuthill at (908) 756-3654 or Kathy Horvath at (908) 754-7268.

Thank you for supporting the South Plainfield Historical Society.

## Labor Day Race and Walk Raise to Benefit Substance Abuse Awareness

The South Plainfield Alliance for Substance Awareness (SPASA), the Club at Ricochet and the South Plainfield Education Foundation (SPEF) will hold the 21st annual Labor Day 5K Race on Monday, September 5. This year, the South Plainfield Education Foundation will partner with the Brayden-Carr Foundation to help fund a new scholarship in Brayden Carr's memory.

More than 300 runners competed last year. The 1.5 Mile Family Fitness Walk will also be held this year. More than 30 walkers participated in the event last year and organizers hope to increase this number in support of family togetherness and a positive drug free, fun-filled fitness lifestyle.

The entry fee for walkers is \$5 per person and/or family. T-shirts and substance awareness information packets will be given to the first 40 participants who pre-register by today for the walk.

This year's 5K run, pre-entry registration is \$15 (by today); the registration fee after today and on race day will be \$20. The first 100 pre-registered 5K entrants who pre-register will receive a T-shirt along with a packet of various items and substance awareness information.

Computer timing will be handled by Best Race Systems and race results will be posted on the Internet at www.bestrace.com. Do not mail applications after today due to the possibility of not arriving to the post office box in time.

The race will begin and end on Lake Street next to the South Plainfield Middle School. Both the 5K run and the 1.5 mile walk will begin at 9:30 a.m., depending on the parade marshals, with registration starting at 8:15 a.m. There will be two tables set up, one for pre-registered runners and another for race day registrations.

All proceeds from the race support the efforts of the South Plainfield Alliance for Substance Awareness and the South Plainfield Education Foundation in making the South Plainfield community drug free and to inspire our students to achieve academically with positive incentives and education grants and scholarships.

Entry forms can be downloaded from the borough's webpage, southplainfieldnj.com. Mail application and check to South Plainfield Education Foundation or S.P.E.F., Attn: 5K race and Fitness Walk, P.O. Box 733, South Plainfield N.J. 07080.

## POLICE REPORT

• On July 31 Edward Osorio, 34, of Edison was arrested for possession of a controlled substance and careless driving.

• A Piscataway resident reported the theft of cash from their wallet that was taken from their purse which had been left unattended in a shopping cart at Kohl's.

• On August 1 Mark A. Blumberg, 27, of Watchung was arrested for possession of a controlled substance.

• On August 2 Khyati A. Patel, 24, of Piscataway was arrested at Macy's for shoplifting \$273 worth of clothing and \$450 worth of jewelry.

• On August 7 Oswald N. Paez, 30, of Edison was arrested at Liquid Assets for disorderly conduct and an outstanding warrant.

• Domenic Paniscotti, 32, of Piscataway was arrested at Liquid Assets for disorderly conduct.

• On August 8 a Plainfield resident reported the theft of their wallet that was left at the service window at Bravo Supermarket on W. 7th Street.

• A Grant Avenue resident reported the theft of two tires and aluminum rims and eight Mustang Pony rims from the side of their yard.

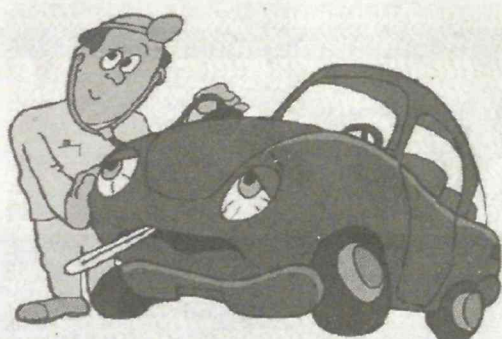
• On August 10 a Melrose Avenue resident reported the theft of a BMX bike that was left unlocked at the PAL.

• A Foster Avenue resident reported that the siding and two front windows of their home had been damaged by a BB gun.

• On August 11 Radio Shack on Hadley Road reported the theft of a Canon Rebel digital camera which was on display.

• A Dey Street resident reported the picture window of their home had been broken by a thrown rock.

## FRANK'S Automotive



### Get Your Car To Us

### Before The Heat Gets To Your Car.

Nothing stresses you car more than summer heat. Let's make sure that it's ready.

1<sup>st</sup> Time Customers receive \$5 off on a Lube, Oil, and Filter Service or \$20 off any service over \$100.00

1521 Park Ave

So Plainfield NJ 07080

franksautomotiveservice.com

## 908-753-0277

### Cooling Problems?

### ONE CALL Solves Them All

### 24 Hour Emergency Service

Financing Available

## One Call

Electrical, Heating & Cooling Service Inc.

Residential • Commercial  
Repairing • Servicing • Replacing  
& Installing ALL Brands & Models

Mention This Ad & Save

**\$25 Off**  
ANY SERVICE CALL

Central Air Conditioning Systems • Ductless Systems • Central Heating Systems

"Serving Middlesex County"

Fully Insured & Bonded

License # 13852 • H.I. Lic # 13VH05891900

**FREE ESTIMATES!**

www.onecallelectrical.com

We Promise To:

- properly diagnose your service needs
- give you the cost before work begins
- give you a clear explanation of the work
- be courteous and friendly
- follow up on our work with a phone call

"We Stand Behind All Our Work..."

call **908-769-8200**

BBB SENIORS DISCOUNT VISA YBM3

call **908-769-8200**

You are reading

# THIS AD.

And so are many others in South Plainfield!



**South Plainfield Observer**

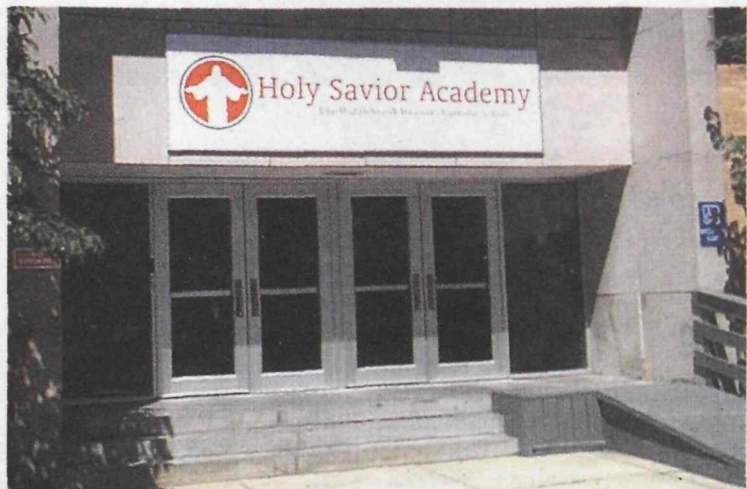
Delivering the best of South Plainfield since 1997

To reach local readers, there's no better way than in the Observer, the most read publication in South Plainfield.

**South Plainfield Observer**

For advertising information and rates, call 908-668-0010 or email spobserver@comcast.net.





Holy Savior Academy, housed in the former Sacred Heart School, will offer students advanced technology.

*"By combining resources, we've been able to offer parents and students the interactive technologies which not one of the schools could afford to do on their own."*

—Colleen Gallagher, chairman of the Board of Trustees

## Public Invited to Holy Savior Academy Open House

The Board of Trustees of Holy Savior Academy cordially invites parents, students, and the interested general public to an open house on Thursday, Aug. 25 from 7 to 9 p.m.

Mrs. Hanlon, the principal of the new school, said "We have been extremely busy over the summer. Classrooms have been painted, new signs placed, some light construction has taken place and new, advanced technology has been installed. We think the school community and the more extended community might like to see what we've accomplished."

Mr. Dragan Zrno, the IT director and a faculty member of Holy Savior Academy, said, "We've updated our WiFi capabilities, installed new white boards and video conferencing technology, expanded our computer labs, and are installing new, interactive technology like NetBook carts and Instant Response Technology. We think it's very exciting and we think that parents and students are going to be very excited too. We've come a

long, long way."

Holy Savior Academy was founded to provide a regional elementary parochial school for families in the area after the pastors of four area parochial schools decided to close their own parish schools.

"By combining resources, we've been able to offer parents and students the interactive technologies which not one of the schools could afford to do on their own," said Colleen Gallagher, chairman of the Board of Trustees. "We will be able to offer students who qualify, enrichment courses in math and language arts, a big addition to our curriculum. We also think that Holy Savior Academy will generate substantial "spin-off" revenues to the community. While we've accomplished a lot, we will continue to work hard to make Holy Savior Academy one of the outstanding schools in the area and in the diocese."

The school opens its doors to students on Thursday, Sept. 1.

## BOE Announces Employee Retirements

The following members of the South Plainfield Education Association have retired and will not return this September: Leslie DiLollo, Nancy Donahue, Michele Fidler, Greg Genz, Barbara Harris, Patricia Higgins, Louise Mruz, Kathleen Murano, Tracy Murray, Anthony Porcile, Joanne Otlowski, Dan Radakovich, Donna Rowlands and Linda Schwebel.

**Michele Fidler** taught second grade at John F. Kennedy School, although she had taught preschool and kindergarten in the past. Her 40 years of experience in education includes her years as director of a nursery school in Cranford. During the 24 years of teaching in South Plainfield, Fidler also taught at Franklin and Roosevelt schools. As a graduate of Hunter College she received a bachelor of arts degree in early childhood and psychology. Fidler is a member of the Kindergarten Association as well as NEA, NJEA and SPEA. For the SPEA she has served as a school representative for many years and was a delegate at the NEA convention in Miami. She also served on the district's science curriculum committee.

Upon her retirement Fidler plans to move to Florida, where she will continue to pursue her interests of reading, snorkeling and traveling.

**Greg Genz** retired earlier this year. He was a history major who ended his career teaching history/in-class support (ICS) at the high school. His colleagues maintain that he was a great storyteller. His students loved hearing his stories, which made history come alive.

**Barbara Harris** just completed 43 years as an art educator in South Plainfield. She was hired upon her graduation from Douglass College, Rutgers University with a bachelor of arts degree in art education K-12. Shortly thereafter, she also received her M.A. in art education from Rut-

gers. Harris's home school has always been John E. Riley, but during the last 27 years she has also been one of the art teachers at Kennedy School. Prior to Kennedy, she taught at Roosevelt, Franklin and the middle school, including fifth and sixth grades. She also taught grades one through six at Grant School (before it became the administration building) and a self-contained developmentally disabled class of older students at Grant administration. As her final Riley/Kennedy assignment, Harris taught kindergarten through fourth grade and a self-contained special needs class.

Harris was honored with a New Jersey Governors' Teacher Recognition Award and she has been listed in *Who's Who of American Educators* and *Who's Who of American Women*. Besides NEA, NJEA, MCEA and SPEA she is a member of Art Educators of New Jersey (AENJ) and presented a workshop on the impressionist artist Claude Monet at one of their conferences.

She was the SPEA public relations chairperson for many years and was also the chief building representative at Riley School where she also served on the Character Education Committee. Harris was a cooperating teacher through Kean University many times and also served as an art teacher mentor. She wrote the district's first comprehensive art curriculum 43 years ago and has since periodically worked on updating it with her department colleagues. In the 1990s she also helped develop the elementary art frameworks for the New Jersey Core Curriculum Content Standards for the visual arts as a consultant for the Department of Education.

In addition to her work as an art educator, Harris, using her professional name of Barbara Melino, is a clay artist who makes one-of-a-kind sculptural functional ceramic pieces,

wall reliefs and clay jewelry. She has exhibited in Manhattan, New Jersey and Pennsylvania and has been awarded recognition for her work, which is also in private collections.

Harris enjoys going to art museums and the theater, especially in New York City, which she hopes to do more of once she's retired. She is also looking forward to spending time with her family, continuing her artwork and taking college courses in visual culture and other subjects "just for fun."

**Patricia Higgins** was a member of the Child Study Team at Grant Elementary and the Middle School. She has been in education for 31 years, 21 of them in South Plainfield. During her career she has also worked with assessing preschoolers. Higgins received a masters degree from Kean University and has also earned LDTC and Supervisor certificates. Additionally, she is a doctoral candidate at Arcadia University. She is a member and past president of the Association of Learning Consultants (NALC) and has also served on its executive board. In the district, she recently served on the credentials committee and was a past member of the professional development committee. Following her retirement she will continue to teach graduate level classes in special education at Kean University.

"I have met so many wonderful families and students in my CST work here, and the teachers and staff here are professionals and caring individuals who I have enjoyed working with. Leaving is bittersweet!"

(To be continued next week.)

### Celebrating 35 years!



*Treat yourself....*

On Sunday, August 28  
enjoy complimentary  
Hi/Lo Lights &  
Urban Shock Peek-a-  
Boo Intense Color

Call for more details...  
908-668-8397

*Come in and take advantage of our  
friendly service & competitive prices*

**Carousell**  
Where you are always treated like one of the family

• 307 Oak Tree Ave., South Plainfield • **\*\*CUTS FOR KIDS\*\* \$5 + AGE**

### What Are You Waiting For?



**Subscribe. 908-668-0010**



### MOHN'S FLORIST

2325 plainfield ave., so plainfield  
908 561 2808  
www.mohnsflorist.com

- weddings and receptions
- sympathy designs • everyday floral gifts
- fruit, gourmet, gift baskets
- dish gardens • balloon bouquets

*let us create anything  
you can imagine....*

### LaBella Dance Studio

*"Creative Dance Programs  
for Children!"*

Ages 18 months to 8 years

176 Front Street, So. Plainfield  
(732) 762-0086

www.labelladancestudio.vzwebsites.com

All our programs are designed for young children. We offer small group instruction from college professionals

- Offering:
- Beginner Ballet, Tap, Jazz, Hip Hop & Acrobatics
  - Enchanted Ballet/Tap-preschoolers will learn ballet and tap with the use of enchanted props
  - Fairy Ballet-introduction to ballet for children 18 mos. to 3 years using fairy dress up props
  - Music Time- Children 18 mos. to 3 years will have interactive play with music
  - Princess Ballet-preschoolers learn ballet while using princess dress up props
  - Dancing Diva-hip hop class for preschoolers
  - Dress Up Fun-allowing preschoolers imagination to soar! Preschoolers will explore dance with dress up props and play interactive games
  - Jazzy Jazz-introduction to Jazz for preschoolers
  - Dance Jam-fun babysitting service while parents go out for the night and we JAM, 1st & 3rd Friday of the month
  - Theme Birthday Parties on Saturdays & Sundays
  - Lots more....

Sign up for a **FREE** Demo Class  
Pease call 732-762-0086 or

email labella9594@gmail.com

Hurry!! Space is Limited!

# SUMMER'S NOT OVER...

## It's Actually the start of our Summer Blowout!

Join for **\$0 Enrollment Fee\*** And Get Your **13th Month FREE!**

# Retro Fitness

**WE GET YOU**

*All Month Long*

**ONLY \$19.99 PER MONTH**  
Plus Tax  
GUARANTEED FOR LIFE!

**EDISON • 3775 Park Avenue • 732-549-7387**  
(One block south of Oak Tree Road) (RETRO)

**www.RetroFitness.net**



# LEGAL NOTICES

## BOROUGH OF SOUTH PLAINFIELD, MIDDLESEX COUNTY, NEW JERSEY LEGAL NOTICE

### SUMMARY OR SYNOPSIS OF AUDIT REPORT FOR PUBLICATION

SUMMARY OR SYNOPSIS OF 2010 AUDIT REPORT OF  
BOROUGH OF SOUTH PLAINFIELD AS REQUIRED BY N.J.S. 40A:5-7

#### COMBINED COMPARATIVE BALANCE SHEETS

|  | DECEMBER 31,<br>2010    | DECEMBER 31,<br>2009    |
|--|-------------------------|-------------------------|
| <b>ASSETS</b>  |                         |                         |
| Cash and Investments   | \$ 7,983,773.35         | \$ 10,434,337.26        |
| Taxes, Assessments, Liens and<br>Utility Charges Receivable      | 1,127,909.01            | 788,512.42              |
| Property Acquired for Taxes-Assessed Value                       | 4,714,000.00            | 4,714,000.00            |
| Prospective Assessments Funded                                   | 152,170.08              | 152,170.08              |
| Accounts Receivable  | 1,541,911.99            | 1,299,549.31            |
| Fixed Capital - Utility  | 14,355,858.58           | 14,355,858.58           |
| Fixed Capital Authorized and Uncompleted - Utility               | 251,531.59              | 151,531.59              |
| Deferred Charges to Future Taxation-General Capital              | 13,076,688.97           | 12,294,272.36           |
| Deferred Charges to Revenue of Succeeding Years                  | 27,266.37               | 12,500.00               |
| General Fixed Assets   | 35,845,445.00           | 34,963,533.00           |
| <b>TOTAL ASSETS</b>  | <b>\$ 79,076,554.94</b> | <b>\$ 79,166,264.60</b> |
| <b>LIABILITIES, RESERVES AND FUND BALANCE</b>                    |                         |                         |
| Bonds and Notes Payable  | \$ 13,611,926.02        | \$ 14,099,465.41        |
| Improvement Authorizations                                       | 2,070,567.19            | 2,458,486.97            |
| Other Liabilities and Special Funds                              | 6,486,308.40            | 7,845,141.28            |
| Amortization of Debt for Fixed Capital Acquired<br>or Authorized | 12,435,890.17           | 11,970,890.17           |
| Reserve for Certain Assets Receivable                            | 6,238,337.76            | 5,894,254.70            |
| Fund Balance   | 2,388,080.40            | 1,934,493.07            |
| Investment in General Fixed Assets                               | 35,845,445.00           | 34,963,533.00           |
| <b>TOTAL LIABILITIES, RESERVES AND FUND BALANCE</b>              | <b>\$ 79,076,554.94</b> | <b>\$ 79,166,264.60</b> |

#### COMPARATIVE STATEMENTS OF OPERATIONS AND CHANGE IN FUND BALANCE - CURRENT FUND

|  | YEAR ENDED<br>DECEMBER<br>31, 2010 | YEAR ENDED<br>DECEMBER<br>31, 2009 |
|--|------------------------------------|------------------------------------|
| <b>REVENUE AND OTHER INCOME REALIZED</b>           |                                    |                                    |
| Fund Balance Utilized                              | \$ 1,465,000.00                    | \$ 1,165,000.00                    |
| Miscellaneous - From Other Than Local              |                                    |                                    |
| Property Tax Levies                                | 6,923,452.34                       | 5,402,264.28                       |
| Collection of Delinquent Taxes and Tax Title Liens | 352,230.39                         | 11,309.40                          |
| Collection of Current Tax Levy                     | 69,337,975.64                      | 34,018,910.68                      |
| <b>TOTAL INCOME</b>                                | <b>\$ 78,078,658.37</b>            | <b>\$ 40,597,484.36</b>            |
| <b>EXPENDITURES</b>                                |                                    |                                    |
| Budget Expenditures                                | \$ 24,502,093.82                   | \$ 13,542,914.44                   |
| County Taxes                                       | 12,378,281.80                      | 6,174,570.36                       |
| Local District School Taxes                        | 39,963,937.87                      | 20,140,600.00                      |
| Other Expenditures                                 | 21,907.35                          | 18,623.01                          |
| <b>TOTAL EXPENDITURES</b>                          | <b>\$ 76,866,220.84</b>            | <b>\$ 39,876,707.81</b>            |
| Statutory Excess in Revenue                        | \$ 1,212,437.53                    | \$ 720,776.55                      |
| Fund Balance, Beginning                            | 1,472,981.44                       | 1,917,204.89                       |
|  | <b>\$ 2,685,418.97</b>             | <b>\$ 2,637,981.44</b>             |
| Less: Utilized as Anticipated Revenue              | 1,465,000.00                       | 1,165,000.00                       |
| Fund Balance, Ending                               | <b>\$ 1,220,418.97</b>             | <b>\$ 1,472,981.44</b>             |

#### COMPARATIVE STATEMENTS OF OPERATIONS AND CHANGE IN FUND BALANCE SEWER UTILITY OPERATING FUND

|   | YEAR ENDED<br>DECEMBER<br>31, 2010 | YEAR ENDED<br>DECEMBER<br>31, 2009 |
|---|------------------------------------|------------------------------------|
| <b>REVENUE AND OTHER INCOME REALIZED</b>    |                                    |                                    |
| Fund Balance Utilized                       | \$ 5,000.00                        | \$ 125,000.00                      |
| Collection of Sewer Use Charges             | 6,746,650.53                       | 2,605,612.07                       |
| Miscellaneous                               | 55,983.78                          | 33,297.35                          |
| <b>TOTAL INCOME</b>                         | <b>\$ 6,807,634.31</b>             | <b>\$ 2,763,909.42</b>             |
| <b>EXPENDITURES</b>                         |                                    |                                    |
| Budget Expenditures                         | \$ 5,236,275.00                    | \$ 2,639,375.00                    |
| Operating                                   | 2,000.00                           |                                    |
| Capital Improvements                        | 32,500.00                          | 18,000.00                          |
| Deferred Charges and Statutory Expenditures | 528,000.00                         | 54,206.25                          |
| Debt Service                                | 40,000.00                          | 1,055.00                           |
| Other Charges                               |                                    |                                    |
| <b>TOTAL EXPENDITURES</b>                   | <b>\$ 5,838,775.00</b>             | <b>\$ 2,712,636.25</b>             |
| Excess in Revenue                           | \$ 968,859.31                      | \$ 51,273.17                       |
| Fund Balance, Beginning                     | 259,073.65                         | 354,800.48                         |
|   | <b>\$ 1,227,932.96</b>             | <b>\$ 406,073.65</b>               |
| Less: Utilized as Anticipated Revenue       | 5,000.00                           | 125,000.00                         |
| Sewer Utility Operating Fund                | 250,000.00                         | 22,000.00                          |
| Current Fund                                |                                    |                                    |
| Fund Balance, Ending                        | <b>\$ 972,932.96</b>               | <b>\$ 259,073.65</b>               |

#### COMPARATIVE STATEMENTS OF OPERATIONS AND CHANGE IN FUND BALANCE SWIMMING POOL UTILITY OPERATING FUND

|  | YEAR ENDED<br>DECEMBER<br>31, 2010 | YEAR ENDED<br>DECEMBER<br>31, 2009 |
|--|------------------------------------|------------------------------------|
| <b>REVENUE AND OTHER INCOME REALIZED</b>             |                                    |                                    |
| Fund Balance Utilized                                | \$ 2,559.66                        | \$ 34,598.00                       |
| Collection of Pool Membership & Fees                 | 162,234.00                         |                                    |
| Miscellaneous  | 15,901.73                          | 32,832.54                          |
| <b>TOTAL INCOME</b>                                  | <b>\$ 180,695.39</b>               | <b>\$ 67,430.54</b>                |
| <b>EXPENDITURES</b>                                  |                                    |                                    |
| Budget Expenditures                                  | \$ 197,559.66                      | \$ 176,500.00                      |
| Operating  |                                    | 18,439.75                          |
| Capital Improvements                                 |                                    |                                    |
| Deferred Charges and Statutory Expenditures          | 5,500.00                           | 500.00                             |
| Debt Service   | 19,000.00                          |                                    |
| <b>TOTAL EXPENDITURES</b>                            | <b>\$ 222,059.66</b>               | <b>\$ 195,439.75</b>               |
| Adjustment to Income Before Fund Balance             | \$ 41,364.27                       | \$ 147,225.44                      |
| Realized from General Budget for Anticipated Deficit |                                    |                                    |
| Excess in Revenue                                    | - 0 -                              | - 0 -                              |
| Fund Balance, Beginning                              | 6,559.66                           | 6,559.60                           |
|  | <b>\$ 6,559.66</b>                 | <b>\$ 6,559.60</b>                 |
| Less: Utilized as Anticipated Revenue                | 2,559.66                           |                                    |
| Fund Balance, Ending                                 | <b>\$ 4,000.00</b>                 | <b>\$ 6,559.60</b>                 |

#### RECOMMENDATIONS

That professional service contracts awarded by the governing body include an exact or not-to-exceed amount and that all applicable vendors be issued 1099s.

That the practice of issuing confirming orders be discontinued.

That the court administrator investigate and correct the significant differences between the analysis of open bill and the actual cash proof/bank reconciliation balance.

That all departments collecting money turn their daily receipts over to the finance office within 48 hours.

That the recreation department maintain appropriate records, with totals for each month per category, that matches to the actual turnovers received by the finance office.

A Corrective Action Plan, which outlines actions the Borough of South Plainfield will take to correct the findings listed above, will be prepared in accordance with the federal and state requirements. A copy of it will be placed on file and made available for public inspection in the Office of the Borough Clerk in the Borough of South Plainfield.

The above summary or synopsis was prepared from the report of audit of the Borough of South Plainfield, County of Middlesex, for the calendar year 2010. This report of audit, submitted by Suplee, Clooney & Company, Registered Municipal Accountants and Certified Public Accountants, is on file at the Borough Clerk's Office and may be inspected by any interested person.

Joann Graf, RMC, Municipal Clerk

\$341.85

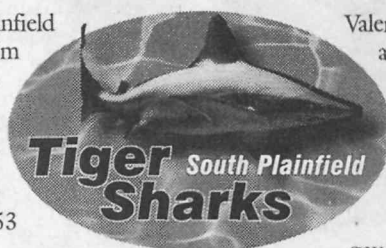
August 19, 2011

# sports

# WEEKLY RESULTS

## Tiger Sharks Drown Cranford Gators

The South Plainfield Tiger Shark Swim Team won its meet against the Cranford Gators held at the Cranford Pool on July 21 by a score of 153 to 102.



Taking first place ribbons in all the Individual Medley events were Brendan Tang (10 and under), Andrew Galarza (11/12) and Anthony Gurrieri (13-18). Aris Chung (10 and under) and Bryce Uzzolino (13-18) placed second. Manav Shah placed third in the 11/12 age group.

South Plainfield won all the free-style events except one. Darlene Fung (10 and under) and Brianna Tang (11/12) placed first for the girls, while Corey He (eight and under), Matthew Chan (9/10), Andrew Galarza (11/12), Daniel Galarza (13/14) and Anthony Gurrieri (15-18) took home blue ribbons for the boys. Stephanie Chiu (10 and under) and Ali Huber (13-18) placed second, and Gracie Piekarski placed third for the oldest girls. The eight and under boys swept their event when Tyler Wu and Ryan Park placed second and third, respectively. Brendan Tang (9/10) and Nicolas Gurrieri (11/12) placed second, and David Wang (15-18) took third to finish the freestyle events.

In the backstroke events Shannon Yan was the only eight and under to win with a third place finish, but the 9/10 girls swept their event with Jenna Yan, Stephanie Chiu and Kristy Tam placing first, second and third. The 15-18 girls did the same, with Maggie

Valentino, Ellen Zinsky and Lorraine Shea also placing first, second and third. Placing third in the 11/12 girls was Geni Huber. Butterfly events gave South Plainfield three out of five first place ribbons. Taking home the blue ribbons were Tyler Wu (eight and under), Matthew Chan (9/10) and Nicolas Gurrieri (11/12). Corey He and Bryce Uzzolino placed second for the youngest and oldest boys. Achinth Poobalan (9/10), Manav Shah (11/12) and David Wang (13/14) placed third in the same event.

The girls swam breaststroke. Capturing first place were Jenna Yan (9/10), Brianna Tang (11/12) and Ali Huber (15-18). Darlene Fung and Kristy Tam took second and third in the 9/10 age group making those girls sweep the heat. Geni Huber (11/12), Grace Chung (13/14) and Amy Zinsky (15-18) placed third. The only eight and under swimmer to place was once again Shannon Yan taking a third place ribbon. Placing first in their heats were: Justin Tam, eight and under 25m freestyle; Nicole O'Sullivan, eight and under 25m backstroke and 25m breaststroke; Ellen Zinsky, 15-18-50m freestyle; Kristina Kwan, eight and under 25m breaststroke; and Victoria Lee, 15-18-100m breaststroke.

The Tiger Sharks won five out of the six relays. Taking first place in the freestyle relays were (9-12) Brianna Tang, Stephanie Chiu, Jenna Yan and

Aubrey Marish; (13-18) Samantha Soto, Darlene Fung, Ali Huber and Maggie Valentino. Taking first place in the medley relays were: (eight and under) Tyler Wu, Ryan Park, Max Strassburger and Corey He; in (9-12) Brendan Tang, Nicolas Gurrieri, Andrew Galarza and Matthew Chan; and (13 -18) category, Daniel Galarza, Eugene Kim, Bryce Uzzolino and Anthony Gurrieri.

Featuring our 9/10 and 11/12 swimmers this week: These swimmers have decided to make a commitment to the sport. They practice with determination with their "eyes on the prize." The 9/10 swimmers are Brianna Padovano, Dominic Faustini, Noah Karch, Rachel Tam, Kristy Tam, Jack O'Shaughnessy, Mackenzie Surowiec, Jordan Lovett, Kristina Kwan, Zachary Brown, Danielle Bythell, Michael Poggio, Anthony Van Herk, Gwen Cheung, Brendan Tang, Lynda Farinella, Stephanie Chiu, Ryan Carey, Jenna Yan, Ezinne Ibeku, Darlene Fung, Claudia Aljian, Aris Chung, Aditi Bhattacharya, Caleb Ivaniuc, Erin Pepe, Achinth Poobalan, Kate Duhamel, Alex Crews, Adam Nathoo and Matthew Chan. Featuring the 11/12 swimmers are Peter Wu, Mark Stanik, Manav Shah, Aubrey Marish, Andrew Toapanta, Charles Lovett, Chandler Carter, Kaitlyn Kwan, Nicholas Farinella, Isaac Nathoo, Elizabeth Chiu, Andrew Galarza, Adanna Ibeku, Danny O'Shaughnessy, Brianna Tang, Drew Mackenzie, Cristian Butrico, Benjamin Sheaffer, Megan McDermott, Gregory Forbes, Olivia George, Nicolas Gurrieri and Gennifer Huber.

# LEGAL NOTICES

## BOROUGH OF SOUTH PLAINFIELD MIDDLESEX COUNTY, NEW JERSEY LEGAL NOTICE

August 10, 2011

Public Notice is hereby given that the following action was taken by the South Plainfield Planning Board at its meeting held on August 9, 2011.

A. Case # 08-05—Dumas Estates, Block 14; Lot 40; R-75 Zone. 970 Dumas Avenue. The applicant's request for final major sub division approval and waivers was hereby GRANTED subject to additional voluntary conditions.

Respectfully Submitted,  
Mary Beth Khidre  
Recording Secretary-Planning Board

\$27.56 August 19, 2011

## BOROUGH OF SOUTH PLAINFIELD MIDDLESEX COUNTY, NEW JERSEY LEGAL NOTICE

August 12, 2011

Public Notice is hereby given that the following action was taken by the South Plainfield Board of Adjustment at its meeting held on August 11, 2011.

A. Case # 3-11—Lyndsey Development Corp. Block 264; Lot 14; HDD Zone. 156 Hamilton Blvd. The applicant's request that this application be withdrawn and dismissed without prejudice was hereby GRANTED subject to additional voluntary conditions.

Respectfully Submitted,  
Mary Beth Khidre  
Secretary-Board of Adjustment

\$28.24 August 19, 2011

## BOROUGH OF SOUTH PLAINFIELD MIDDLESEX COUNTY, NEW JERSEY LEGAL NOTICE

### ORDINANCE NO.1939

An ordinance amending Section 717.5 of the Code of the Borough of South Plainfield entitled "Signs for Commercial Purposes" was adopted on first reading and advertised in the Observer on Friday, August 19, 2011 and that a public hearing be scheduled for Tuesday,

September 6, 2011 at the Public Meeting which will begin immediately following the 7:00pm Agenda Meeting in the Municipal Building, 2480 Plainfield Avenue, South Plainfield, NJ 07080 as follows:

BE IT ORDAINED BY THE GOVERNING BODY OF THE BOROUGH OF SOUTH PLAINFIELD, NEW JERSEY as follows:

WHEREAS, Section 717.5(F) provides regulation and requirements for awning signs within the HDD Zone of the Borough of South Plainfield, and has not been reviewed or amended for many years, and cannot be enforced in its current form; and

WHEREAS, the Business Advisory Group of the Borough has requested amendment of this Section to conform with existing circumstances within the Zone; and

WHEREAS, the Governing Body of the Borough of

South Plainfield has determined that such Section should be amended in consideration of certain circumstances within the Borough;

NOW, THEREFORE, BE IT ORDAINED by the Mayor and Council of the Borough of South Plainfield, County of Middlesex, State of New Jersey as follows:

DELETE: SECTION 717.5(F).

ADD: SECTION 717.5(F) as follows:

An awning shall be defined as any roof-like cover that projects from the wall of a building for the purpose of shielding a doorway or window from the elements.

Awnings shall not be metal, other than supporting members, and all awning material must be fire retardant as approved by the Borough of South Plainfield;

No awning shall be illuminated, whether by internal or external sources;

There shall be no restriction regarding the type or style of awning, as long as the awning complies with the regulations set forth herein;

The content or advertising which may be displayed within the awning area shall be limited to the identification and location of the business and premises, and information concerning the activities conducted on the premises or the goods and services offered therewith. Examples of acceptable content are display of a business name; a business logo; and contact information, such as a telephone number, email address, webpage or any other type of social media contact. Any writing, drawing, or other representation upon an awning must be professionally sewn or painted;

Awnings shall only be permitted on ground-floor businesses. However, in the event of a second-story or greater occupancy by a business in a building, an awning may be erected if there is a ground-floor entrance to such business over such entrance;

Any other regulations of the Borough, such as those which regulate signs, shall not be applicable to the content or advertising on awnings.

Awnings shall be maintained in good condition and shall not be allowed to become dilapidated. All supports, braces, anchors and other parts shall be kept in continual repair, including cleaning, painting and replacing of defective parts or members of any awning. Lack of proper maintenance shall be considered abandonment, and the awning shall be repaired, cleaned or otherwise returned to a presentable condition or removed within ten days from notification by the Zoning Officer or Construction Code Official;

Retractable awnings shall not be permitted;

The lowest portion of the awning must be a minimum of eight feet from the bottom edge of the lowest portion to the sidewalk or ground level;

The length of any awning shall not be greater than the width of the storefront or tenant space;

In the event of a corner building, awnings may be constructed in accordance with these regulations for all sides of the building which front a street or roadway, including wrapping around the building;

In the event a single owner or tenant occupies two or more contiguous building fronts for one use, one awning uniform in size, shape, style or material may be erected and maintained across the two or more contiguous fronts if same is done in conformance with all regulations herein;

An awning may be no greater than forty-two inches in height measured from its lowest point to its highest point;

Awnings shall have a maximum projection of no greater than four feet from the building wall face over the public right-of-way; and

Valances shall not be permitted.

This Ordinance shall take effect upon final passage and publication in accordance with New Jersey law.

Joann L. Graf, RMC  
Municipal Clerk

\$70.15 August 19, 2011

## BOROUGH OF SOUTH PLAINFIELD MIDDLESEX COUNTY, NEW JERSEY LEGAL NOTICE

### ORDINANCE NO.1938

#### BOND ORDINANCE STATEMENT AND SUMMARY

The bond ordinance, the summary terms of which are included herein, has been finally adopted by the Borough of South Plainfield, in the County of Middlesex, State of New Jersey on August 15, 2011 and the 20 day period of limitation within which a suit, action or proceeding questioning the validity of such ordinance can be commenced, as provided in the Local Bond Law, has begun to run from the date of the first publication of this statement. Copies of the full ordinance are available at no cost and during regular business hours, at the Clerk's office for members of the general public who request the same. The summary of the terms of such bond ordinance follows:

Title: "Bond Ordinance Providing for Road Improvements for New Market Avenue Phase II in and by the Borough of South Plainfield, in the County of Middlesex, New Jersey, Appropriating \$350,000 Therefor and Authorizing the Issuance of \$50,000 Bonds or Notes of the Borough to Finance Part of the Cost Thereof."

Purpose: The resurfacing, repaving and road improvements for New Market Avenue Phase II, including all work and materials necessary therefor and incidental thereto.

Appropriation: \$350,000

Bonds/Notes Authorized: \$50,000

Grant Appropriated: A grant in the amount of \$300,000 from the State of New Jersey Department of Transportation

Section 20 Costs: \$30,000

Useful Life: 10 years

Joann Graf, RMC  
Municipal Clerk

\$38.90 August 19, 2011



## Notes from the **Jim Pomovets Memorial Golf League**

### LEAGUE STANDINGS

| American Division          |    |   |   | National Division            |   |   |   |
|----------------------------|----|---|---|------------------------------|---|---|---|
|                            | W  | L | T |                              | W | L | T |
| Alfie's Boys .....         | 10 | 4 | 0 | Unique Sports Access.....    | 9 | 5 | 0 |
| KC's Korner.....           | 7  | 5 | 2 | 2 Buds, 2 Dubs.....          | 7 | 7 | 0 |
| Twin City Pharmacy.....    | 7  | 5 | 2 | McCriskin's .....            | 7 | 7 | 0 |
| Dirty Harry & Friends..... | 6  | 7 | 1 | Sport & Social .....         | 6 | 8 | 0 |
| Witty's Liquors .....      | 5  | 7 | 2 | Italian-American Club.....   | 6 | 8 | 0 |
| Oak Tree Dental.....       | 5  | 9 | 0 | So. Plfd. Funeral Home ..... | 5 | 8 | 1 |

By Bob Nilan

Alfie's Boys got off to a terrific 3-0 start and never fell out of first place. They finished the season with a flourish, capturing their last four matches, and put the icing in the cake by clobbering KC's Korner, 18-2, to win the American Division championship.

They put on quite a show on the final night of the regular season: Bill Mann earned the medal for Alfie's Boys with a superb 1-under 32 that featured all pars and one beautiful birdie on the eighth hole. John Gaven had an impressive all-par performance for a 33 and Captain Irish Danny Griffin whacked a couple of trees on the first hole for a double-bogey and then came home with all pars for a nifty 35.

Not much you can do against that kind of scoring, but Billy "Cappy" Capparelli shot a 36 and Tony Cotone, Jr. had a 39 for a KC's Korner team that was totally out-gunned.

Twin City Pharmacy played so well all season that they easily could have notched a few more victories. Frequently, however, they were undone by the handicap system and found themselves giving away a lot of strokes.

Teeing off against Dirty Harry & Friends, the guys on Twin City knew they had to shoot low to overcome a ton of strokes they had to give, so they came out blazing and simply blew away their opponents, 20-0.

Jay Coppola fired his best round of the season, a marvelous 2-under 31. He got plenty of help from Guy Severini and Kurt Maglaque, who had a pair of 35s, and Joe Diller capped off his fine season with a 38.

Witty's Liquors got three solid performances from Kevin "Boom Boom" Bickunas, Eric Beegle and Jim Parker. Bickunas and Beegle had a pair of 38s and Parker contributed a 39—but it's really difficult to win with just three players. So, despite these decent scores, Witty's dropped their match to Oak Tree Dental, 12-8. Frank Oades and Marty Lillis shared medalist honors for the victors with their rounds of 38.

Over in the National Division, the first-place Unique Sports Accessories squad lost their match to Sport &

Social, 13-7, despite the fine showings of Captain Chris Dillon who posted a 35 and Ted "Old Reliable" Stanik who shot a 36. Dennis Bibby had the best round for Sport & Social with his 40.

McCriskin's Home For Funerals faced the Italian-American Club on the last night of the season and all of the players knew how critical their match would be with regard to the final standings. So Captain Mark "Mr. Steady" Chichvar gathered his team at his house and prevailed upon his mother-in-law, Eleanor, to put on her old cheerleader's outfit and shake her pom-poms to motivate his team before heading for the course.

The strategy worked as McCriskin's won their match, 12-8, to finish the season in a tie for second place. Mark "Mr. Steady" Chichvar looked really sharp in posting a 36 and Kris Krantz came through with a 37.

Dale "The Needler" Dube and his 2 Buds, 2 Dubs teammates waited until the last night of the season to show the kind of form that led them to the league championship two years ago. Jeff Orth crushed some impressive drives that split the fairways. Don Hall showed a really deft touch with his short game and Dube's flat blade was on fire. He easily could have had a round two or three strokes lower. All the golfers shot 36s to bury the South Plainfield Funeral Home, 18-2. Bob Kosovan was the medalist for his team with a 40.

In a close race for individual honors, Danny Griffin prevailed over Bill Mann, Joe Diller, Ted Stanik and Guy Severini, his closest competitors, to earn the Player-of-the-Year title.

Griffin and his buddies from Alfie's Boys will have to be at the top of their games when they go head-to-head next week with Captain Chris Dillon and the Unique Sports Accessories team, the National Division leaders, to determine the league championship.

Twin City Pharmacy and McCriskin's Home For Funerals will battle it out for the bronze medal.

**Low scores for the night:** Jay Coppola, 31; Bill Mann, 32; John Gaven, 33; Danny Griffin, 35; Kurt Maglaque, 35; Guy Severini, 35; Chris Dillon, 35.

## Stallone Earns NCAA Postgraduate Scholarships

Chris Stallone of South Plainfield was recently awarded a postgraduate scholarship by the National Collegiate Athletic Association (NCAA).

Stallone became the 14th student-athlete in University of Scranton history to receive the distinguished award.

Stallone owns the distinction of having the highest grade point average of all student-athletes in the senior class. He maintained a 3.95 grade point average while earning his degree in finance. His



Chris Stallone

efforts in the classroom earned him a number of accolades, including first-team Academic all-American by CoSIDA in each of the last two seasons and third-team honors in 2009 along with receiving the Carlesimo Award for academic and athletic excellence at the university's Senior Student-Athlete Banquet.

Stallone's success in the classroom carried over to the baseball diamond.

A four-year starter, he finished his career with a .401 batting average, .490 slugging percentage and .466 on-base percentage. Among his 202 hits were 26 doubles, five triples and three home runs. He hit safely in 110 of 137 career games and had 62 multi-hit games. In 2009 Stallone set the Royals' single-season record for most hits (65) and most runs scored (59). He was named first-team all-Landmark Conference in each of the past three seasons and was a second-team all-South all-star pick in Scranton's previous affiliation with the Eastern College Athletic Conference (ECAC) in 2009. He led the Royals (head coach Mike Bartoletti) to a four-year record of 84-76-1 (.525), including berths in the championship bracket of the Landmark Conference tournament in 2008 and 2011.

Chris is the son of John and Carolyn Stallone of South Plainfield.

## Gloria A. (Angelo) Capparelli, 84

Gloria A. (Angelo) Capparelli passed away on Wednesday, August 10 at Haven Hospice located within JFK Medical Center in Edison.

Born in North Plainfield, Gloria lived in Plainfield before settling in South Plainfield in 1959.

Gloria was a true Italian mother and very family oriented. She became the matriarch of the family and was dedicated in keeping everything in order. She will be remembered as a devoted wife, loving mother and adored grandmother.

She is predeceased by two brothers, Jim and Richard Angelo.

She is survived by her husband of 60 years, Armond; two sons, Armond and Lori of Milltown and Richard and Jude of Newton; three grandchildren, Alyssa, Deanna and Mark Capparelli, and many nieces, nephews and cousins.

Funeral services were held at McCriskin-Gustafson Home For Funerals.

## Francis (Frank) Flannery, 87

Francis "Frank" T. Flannery passed away Thursday, Aug. 11 at Green Brook Manor in Green Brook.

Born in Newark, he had resided in South Plainfield for 55 years.

Mr. Flannery proudly served in the United States Army in the Pacific during WW II. He was a tower man with PSE&G for 42 years, retiring in 1988. Frank coached South Plainfield Junior Baseball and South Plainfield Pop Warner Football for many years. He was also a member of the South Plainfield Knights of Columbus and the South Plainfield Polish Home.

Mr. Flannery was predeceased by his loving wife, Margaret Booth Flannery.

Surviving are six sons, Thomas K. of Bridgewater, Joseph E. of South Plainfield, John M. of Towaco, James A. of Stewartville, Michael B. of Towaco and Kevin P. of South Plainfield; six daughters, Frances Flannery of South Plainfield, Maryann Flannery

nery of Green Brook, Janet Giardino of Butler, Eleanor Martin of Rindge, N.H., Maureen Barnett of Dunellen and Christine Marks of South Plainfield; 29 grandchildren and one great grandchild.

Funeral services were held at South Plainfield Funeral Home.

In lieu of flowers, memorial contributions may be made in Frank's name to COPSA Day Care, Attention Mary Ann Ross, 100 Metroplex Dr., Suite 200, Edison, N.J. 08817-2665.

## Olga A. (Nagy) McDede, 84

Olga A. (Nagy) McDede died at her home on Thursday, Aug. 11.

Born in Plainfield to her late parents, Michael and Irma (Ebsky) Nagy, she was raised in Plainfield and settled in Middlesex in the 1960s.

Olga retired 19 years ago from GlaxoSmithKline Pharmaceuticals Co. where she worked on the assembly line and in the manufacturing warehouse. Prior to GSK, she was a telephone operator for AT&T in Scotch Plains. She was a member of the traveling seniors of Middlesex County and was an avid bowler, participating in leagues at Strike 'N Spare in Green Brook.

Olga was a communicant of Our Lady of Mt. Virgin RC Church in Middlesex. She enjoyed spending time with her family at the Jersey Shore, crabbing, fishing and trips to Atlantic City.

She is predeceased by her husband, Wilbur, who died in 1992 and a daughter, Laura in 1990.

She is survived by two daughters, Kathleen Pollin and husband Donald of South Plainfield and Dr. Sandra Webb and husband Dr. Lawrence Webb of Macon, Ga.; nine grandchildren, Daniel, Jeffrey, Christopher, Kally, Meghan, Bridget, Irene, Gregory and Kyle and two great-grandchildren.

Funeral services were held at McCriskin-Gustafson Home For Funerals.

In lieu of flowers, donations in her memory may be made to the Visiting Nursing Association of Central Jersey, 176 Riverside Ave., Red Bank, N.J. 07701.

**HOMETOWN HEROS**  
**SEND-A-PLATTER**

We will send to any home a beautifully arranged and wrapped Assorted Sandwich Tray with two of our homemade salads—Any Day—Any Time. Serves 8-10

**\$49.95**

**908-755-HERO (4376)**  
www.hometownherosdeli.com

www.mccriskinfuneralhome.com

**McCriskin-Gustafson**

"An Independent, Family Owned & Operated Funeral Home"

**HOME FOR FUNERALS, LLC**

**(908) 561-8000**

2425 Plainfield Ave., South Plainfield, NJ 07080

**PRE ARRANGEMENTS • S/S MEDICAID PROTECTION • CREMATION SERVICES**

**GREEN BURIALS**

James A. Gustafson, Pres./Mgr. • N.J. Lic. No. 4205  
Richard W. McCriskin II, Vice-Pres./Dir. • N.J. Lic. No. 4564

Richard W. McCriskin, Dir. • N.J. Lic. No. 3147  
William C. McCriskin, Dir. • N.J. Lic. No. 3382  
Daniel M. Erickson, Dir. • N.J. Lic. No. 4798



## SOUTH PLAINFIELD FUNERAL HOME

"OUR FAMILY CARING FOR YOUR FAMILY SINCE 1949"

2456 Plainfield Avenue  
South Plainfield, NJ 07080  
(908) 756-2800  
Michael L. Castoral, Manager, NJ Lic. No. 4305  
www.southplainfieldfuneralhome.com

- Pre-planning
- Bereavement Support Group
- Proud member of Veterans & Family
- Memorial Care

**CELEBRATING 39 YEARS**

**Sherban's Lunch Specials**

Lunch Specials served Mon-Fri 11am-3pm, May-July

**Cold Salad Platters \$6.95**

with Arugula, Lettuce or Romaine Served with Potato Salad, Tomatoes & Fresh Cucumbers

Chef Salad • Tuna Salad • Egg Salad  
Greek Salad • Chicken Salad  
Shrimp Salad • Lobster Salad  
Whole Jumbo Shrimp  
Seafood Salad • Sea Legs Salad  
Caesar Salad with Grilled Chicken  
Salad with Grilled Salmon  
Salad with Broiled Tilapia  
Salad with Sliced London Broil  
Salad with Grilled Chicken

Beef Stew • Beef Stroganoff  
Beef Goulash

Your Choice of Salad Dressing

**Sherban's Diner**

222 Front Street, South Plainfield • (908) 755-7427

**Sherban's Dinner Specials**

Dinner Specials served 7 Days a Week from 4-9pm, May-July

**2 for \$20.00**

Cup of Soup, Toss Salad, Our Famous Cucumber Salad, Potato, Vegetable, or Spaghetti

**Meat & Poultry**

Chicken Marsala • Chicken Francaise  
Roast Turkey or Roast Chicken  
Fresh Ham • Beef Stew  
Beef Stroganoff • Beef Goulash  
Chopped Steak • Jr. Prime Rib  
Jr. NY Strip Steak • London Broil  
BBQ Spare Ribs • Roast Loin of Pork  
2 Broiled Pork Chops, Plain or Murphy

**Seafood**

Fried Shrimp in the Basket • Broiled Scrod  
Broiled Tilapia • Broiled Filet of Sole  
Seafood Fra Diavolo w/Scallops, Shrimp, Mussels & Clams

**Italian**

Chicken Parmigiana • Veal Parmigiana  
Eggplant Parmigiana • Stuffed Shells  
Cheese or Meat Ravioli



## In My Opinion

Opinions expressed in this column are not necessarily those of the publisher, nor do we guarantee accuracy.

(Continued from page 2)

member of Cornerstone Architectural Group's Team Tambo. As many of you know this crippling disease directly affects members of the Cornerstone family. The continued support of our friends, family, and business associates means so much to us all on a very personal level.

So, once again, I ask you to please help sponsor me and the other members of Team Tambo as we ride over 100 miles through Northern New Jersey in the "2011 Great New Jersey Country Bike MS Ride."

The National Multiple Sclerosis Society is dedicated to ending the devastating effects of MS, but they can't do it without our help. Your donations go directly towards programs and services for local residence to help with their daily fight against this disease, and also towards national research programs.

It's faster and easier than ever to support this cause that's so important to me. Simply click on the link at the bottom of this message. If you prefer, you can send your contribution to my office: Robert Longo, c/o Cornerstone Architectural Group, LLC, 202 Hamilton Blvd., South Plainfield, New Jersey 07080.

Please know that every dollar counts and no donation is too small. Any amount, great or small, helps to make a difference in the lives of people with MS. I appreciate your support and look forward to letting you know how I do.

Together we can make a difference. To make a contribution on line, visit <http://main.nationalmssociety.org/site/TellFriendOpt?action=optout&toe=fb0bcd0c9c85ff345ac80f6aba04fb82> and go to donate, then click on find a team and type in Team Tambo.

MS stops people from moving. The National MS Society exists to make sure it doesn't. We are a collective of passionate individuals, moving together to create a world free of MS. Join the movement.

Early and ongoing treatment with an FDA-approved therapy can make a difference for people with multiple sclerosis. Learn about your options by talking to your health care professional and contacting the National MS Society at [www.nationalmssociety.org](http://www.nationalmssociety.org) or 1-800-344-4867.

**BOB LONGO, TEAM TAMBO**

Dear Editor:

We have waited long enough for the

food industry to voluntarily develop standards to reduce the marketing of unhealthy foods to children. While the proposed uniform standards recently announced by several food companies are a step in the right direction, they do not go far enough to have a significant impact on limiting the types of unhealthy foods marketed to children.

According to the American Heart Association, one in three children in the U.S. is considered overweight and obese. Food manufacturers must adopt the science-based nutrition guidelines proposed by government agencies. This will help families make healthier food choices and reduce their risk for heart disease and stroke which remain our nation's number one and three causes of death annually.

Nearly 40 percent of sixth graders are considered overweight or obese according to the NJ Department of Health and Senior Services. As a scientist aiming to prevent cardiovascular diseases and stroke, I am alarmed at the condition of our children's health in the Garden State. Over-consumption of high calorie foods is largely to blame for these growing waistlines. Aggressive measures are necessary to reverse this disturbing trend.

Food manufacturers need to go a step further and adopt the government's proposed principles. This will significantly limit children's exposure to advertisements promoting foods and beverages that are high in sugar, trans-fat, sodium and low in nutritional quality and will reassure parents who are trying to do the right thing for their children.

**RESPECTFULLY,  
DR. KENNETH MAYNARD  
AMERICAN HEART ASSOC.,  
AMERICAN STROKE  
ASSOCIATION VOLUNTEER**

## Enroll Now for Fall Semester At Middlesex County College

It's not too late to change your future. Middlesex County College is still accepting students for its Fall 2011 semester. Ninety-nine degree and certificate programs are offered including two new ones: Earth Science and Allied Health Pre-Professional.

"Whether you are a recent high school graduate or someone who is looking to change or enhance his or her career, Middlesex County College is a great fit," said Lisa Gregory, associate director of admissions at the College. The two new programs will begin this fall. Allied Health Pre-Professional is designed for students interested in a career in nursing,

radiography, dental hygiene, medical laboratory technology and respiratory care, as well as other allied health careers. Graduates will be able to apply to one of the selective health technology programs at MCC or transfer to a four-year college or university.

Students in the Earth Science program will study the earth as a giant multi-dimensional system. Earth and its natural resources will be the focus of this program. It is designed so that graduates may transfer to four-year colleges or universities and receive a bachelor's degree.

For information on these or any other program, visit [www.middlesexcc.edu](http://www.middlesexcc.edu).

## Senior Center Sponsoring Trip to Christmas 2011 at Hunterdon Hills

The senior center will be sponsoring a trip to Hunterdon Hills Playhouse to see Christmas 2011 on Thursday, Dec. 8, 4:30 to 9:30 p.m. Price of \$60 per person includes full course meal, show, desserts, tip and tax (transportation not included).

An ensemble cast of multitalented performers celebrate Christmas in an original holiday song and dance fest featuring traditional carols, classic and contemporary yuletide compositions,

humorous skits, and spectacular dance numbers, all backed by a live onstage orchestra.

This show sells out faster than any other show on our schedule, so don't delay—book today!

For further information, call the senior center at (908) 754-1047.

Transportation may be provided with the reservation of 30 or more for a nominal fee.




## BUSINESS/PROFESSIONAL/SERVICES

### AUTO BODY



### AUTO REPAIR



### CARPET



### CONSTRUCTION



### MASSAGE




### LANDSCAPING




### REAL ESTATE








# Observer Classifieds

## LOCAL CLASSIFIEDS

### AUTO FOR SALE

2002 FORD TAURUS-4 DR, A/C, GOOD condition, excellent performance, A/C, 56K. \$4,000. Call evenings (908) 668-4876.

### HOMES FOR SALE

LACKLAND 3 BDR, 2.5 BATH RANCH-Kennedy School area, So. Plfd. **TWO STORY HANDYMAN SPECIAL**-Kennedy School area, double lot. For info, call Mary Ellen O'Connor, Weichert Realty. (908) 294-0146.

### HOME FOR SALE

MOTHER/DAUGHTER HOME, SO. PLFD. -4 BDR, 3 baths, 2 living rooms, family room, dining room, 2 kitchens, central air. 2 zone baseboard heat. Call (908) 754-8135.

### HOME FOR SALE-OVER 55

**SINGLE FAMILY HOME IN GATED COMMUNITY**-2 BDR ranch in desirable Somerset Run, the first-class community where residents enjoy all the luxurious amenities of a resort. Located just off 287 in Somerset, this home boasts 2 baths, huge master BDR, gourmet kitchen, luxury clubhouse amenities, including indoor and outdoor pools and much more! Offered at \$399,000. To view this home, visit realtor.com and search MLS ID# 2848916-8412 or call Susan at (732) 710-8412.

**REALTORS, BRING YOUR BUYERS AND EARN 2.5% COMMISSION!!**

### APARTMENT FOR RENT

SO. PLFD. 1 BDR APT.-PRIVATE ENTRANCE No pets/smoking. Lease, security, credit check. \$850/mo.+util. (908) 561-4364.

### HELP WANTED

**PROOFREADER-TEMPORARY POSITION.** Experienced proofreader with good skills wanted Wednesdays-9 a.m. until presstime (around 1 or 2 p.m.) Call 908-668-0010.

**Got stuff you don't want?**

*Sell it!*

Call 908-668-0010 to place a garage sale ad.

## Think of the possibilities!

Place your classified ad\* in the South Plainfield Observer, then add 150 other New Jersey newspapers for just \$520 — that's less than \$3.50 per paper. *You get millions more readers, literally!*

**Think • Classic Cars • Antiques • Pedigree Pets • Vacation Rentals • Boats and RVs • Special Events • Unique Real Estate •**

**Call Today  
(908) 668-0010**

\*25 words or less; \$13 per add'l word

**South Plainfield  
Observer**

## STATEWIDE CLASSIFIEDS

### ADOPTION

Are you pregnant? A childless married couple seeks to adopt. Financial security. Expenses paid. Call Christine and Norbert. Ask for Michelle/Adam. 1-800-790-5260.

Are you pregnant? Considering adoption? Childless married couple seeking to adopt & provide loving home, education, and travel. Financial security. Expenses paid. Lisa & Raymond 888-517-0112

Adoption=The promise of a secure home for your newborn baby, filled with warmth, compassion and endless love! Expenses paid. Legal/Confidential. Kathy/Chris 1-877-274-5156.

### ANNOUNCEMENTS

BUY NEW JERSEY FOR \$520! Place your 25-word classified ad in over 145 NJ newspapers! Call Diane Trent at 609-406-0600 ext.24, email dtrent@njpa.org or visit www.njpa.org. (Nationwide placement available) Ask About our TRI-BUY package to reach NY, NJ and PA!

### AUTOS WANTED

AUTOS WANTED 2000 and Up-CASH PAID! Honda, Toyota, Nissans, SUVs and Jeeps. All vehicles WANTED. 24 hr. CASH Pick-up. Any condition. 732-496-1633

DONATE YOUR CAR, TRUCK OR BOAT TO HERITAGE FOR THE BLIND. Free 3 Day Vacation, Tax Deductible, Free Towing, All Paperwork Taken Care Of. 888-438-1090

### AUTOS WANTED

A CAR DONATION HELPS SICK KIDS! DONATE YOUR CAR TO SONGS OF LOVE. Featured on NBC (TODAY SHOW), CNN. Tax-deductible, all kinds of vehicles accepted. SONGSOFLove. ORG 888-909-SONG (7664)

### BUSINESS OPPORTUNITIES

ADVERTISE YOUR BUSINESS HERE! Place your 25 word Classified ad in over 145 newspapers throughout NJ for \$520. Contact Diane Trent 609-406-0600 ext. 24. www.njpa.org

BUYING COINS- Gold, Silver and ALL Coins, Stamps, Paper Money, Entire Collections worth \$5,000 or more. Travel to your home. CASH Paid. Call Marc 1-800-488-4175.

### CONDOS FOR SALE

FORECLOSED!!!! NEW FLORIDA CONDO! Only \$179,900! Similar unit sold for \$477K Luxurious, new 1,700 sf 2BR, 2BA condo w/ study in St. Augustine. Walk to clubhouse, 18-hole golf course, swim & fitness center, lighted tennis courts, 10-acre athletic park, underground parking garage, more. Must see! Call now 1-866-952-5346 x 80.

**To place a classified ad,  
call 908-668-0010  
by noon on Monday.**

### FINANCIAL

CREDIT CARD RELIEF \*\*\*\* FREE CONSULTATION \*\*\*\* Save Thousands of Dollars Out Of Debt In Months - NOT Years! Avoid Bankruptcy NOT A High Priced Consolidation Company Or A Consumer Credit Counseling Program CALL CREDIT CARD RELIEF 866-479-5353 Not Available in All States

### FOR SALE

VONAGE Unlimited Calls in U.S. and 60 Countries! NO ANNUAL CONTRACT! \$14.99 For 3 Months! Then ONLY \$25.99/mo. Plus FREE Activation. Call 888-813-3989

### H.WANTED/TRUCK DRIVERS

Reefer/Flatbed Independent Contractors. Great Equipment - No Money Down - No Credit Check. Earn 72% of Revenue - Guaranteed \$1.02/mile. Fuel Surcharge & Great Benefits! 800-277-0212 www.primeinc.com

### HELP WANTED

Bridgewater company seeking motivated drivers to operate machine for artificial turf care on athletic fields. Must do careful work and able to interact with customers. Call 1-800-314-7336. Seeking Psychiatrist to join growing, full service Behavioral Health Office in South Plainfield. Call 908-548-8533 or email at Bethea.LPC@gmail.com.

### LAND FOR SALE

Cozy Cabin on 5 Acres \$19,995. Beautiful woodlands. Our best deal ever! Call 800-229-7843 Or visit www.landandcamps.com.

### MISCELLANEOUS

ATTEND COLLEGE ONLINE FROM HOME. \*Medical, \*Business, \*Paralegal, \*Accounting, \*Criminal Justice. Job placement assistance. Computer available. Financial Aid if qualified. Call 888-220-5975 www.CenturaOnline.com

Shari's Berries-Mouthwatering gourmet strawberry gifts fresh for all occasions! 100 percent satisfaction guaranteed. Delivered nationwide. SAVE 20 percent on Dipped Berries! Visit www.berries.com/cup or Call 1-888-804-0183

RED ENVELOPE-Unique and Personalized Gifts for All Your Friends and Family! Starting at \$19.95. Visit www.redenvelope.com/delightful for an extra 20 percent off or Call 1-888-763-0391

DISH Network delivers more for less! Packages starting at \$24.99/mo. Local channels included! FREE HD for life! Free BLOCKBUSTER® movies for 3 months. 1-866-944-6135

Reach over 1.4 Million Households! Place your 2x2 Display Ad in over 125 NJ weekly newspapers for ONLY \$1300. Call Diane Trent at 609-406-0600 ext.24, email dtrent@njpa.org or visit www.njpa.org. (Nationwide placement available) Ask About our TRI-BUY package to reach NY, NJ and PA!

### MISCELLANEOUS

NEED TO REACH THE PRESS? Send us your press release and we will do the rest! Fee. Call Diane Trent at 609-406-0600 ext.24, email dtrent@njpa.org or visit www.njpa.org

AIRLINES ARE HIRING. Train for high paying Aviation Career. FAA approved program. Financial aid if qualified. Job placement assistance. CALL Aviation Institute of Maintenance. 877-564-4204

### PUBLIC NOTICES

www.njpublicnotices.com - Subscribe to receive automatic notices: sheriff sales, foreclosures, RFP, bids for schools, town meetings, variances, etc.

### REAL ESTATE

SOUTHERN TIER FARM SALE! 9 acres - \$24,900 Woods, lake rights, mins. North of the PA border! Survey, clear title! Call (888) 481-0442 or click: www.NewYorkLandandLakes.com

### REAL ESTATE/OUT OF STATE

PENNSYLVANIA'S LAKE REGION-1 3/4 hour GWR 2 to 3 acre properties from \$34,900 Surrounded by 110,000 acres of State Land Great recreational area. Serene setting. Priced for immediate sale. Gorgeous Land. Call (888)611-9037. ABANDONED FARM! 10 acres-\$34,900 Woods, fields, stone walls, great views of the Catskills Mtns!! Call (888) 918-6264 NOW! Or visit www.NewYorkLandandLakes.com

## BUSINESS/PROFESSIONAL/SERVICES

### ELECTRICAL

### COOLING AND HEATING

### FLOORING / CARPET

**On Time Electrical Contractor LLC**  
Residential • Industrial • Commercial  
No Job Too Small  
908-451-3313  
On Call 24 hrs.  
Fully Insured & Bonded NJ  
Lic #8854  
BILL RITCHIE

**LOU FASANO**  
HEATING & COOLING, INC.  
24 HOUR EMERGENCY SERVICE  
(908) 755-9141

Act Now!! Take advantage of **\$1,500** Federal Tax Credit on High Efficiency Equipment

**TRANE**

Carpet • Area Rugs • Tile • Hardwood • Laminate • Linoleum

Residential & Commercial  
"We'll Bring Our Mobile Store to your Front Door!"

**MY WAY CARPET**  
877-MY WAY CARPET .com

MyWayCarpet.com **AND FLOORING!** 1-877-699-2922 1-908-757-3470

Repairs • Restretching • Binding • Custom Tile • Sanding and Refinishing

www.Fine-Ants-Sing.com **0% No interest, No payments for 1 year**

### MASONRY

### PAVING/MASONRY

### PLUMBING/HEAT/COOLING

**WAYNE P. SCOTT MASONRY**  
Piscataway Family Business  
55 Years  
**FREE ESTIMATES**  
Steps • Patios  
Walks • Repairs  
**10% Summer Discount**  
NJ State Lic # 13VH00096100  
**732-968-5230**

**MARK L. DI FRANCESCO**  
PAVING • MASONRY

Free Estimates

Driveways • Parking Lots • Seal Coating • Pavers • Wallstone  
Slate • Bluestone • Excavating • Foundations • Block Work  
Cultured Stone • Drainage • Water Proofing

3RD GENERATION IN BUSINESS  
**908-668-8434**

License #8741

**Professional Plumbing, Heating & Cooling, Inc.**

(908) 561-1941  
South Plainfield, NJ  
**FRANK MCCARTHY**

Wondering if Advertising Works?

**?**

These Business & Professional advertisers think so. If you want consistent results for your business, you've got to advertise consistently.

The Observer - Serving South Plainfield Since 1997

### POOLS

### TREE / SHRUB

### WINDOWS & MORE

*Celebrating 25 Years in Business*

**McCarthy Contractors**  
Complete Pool Maintenance & Repair  
Pools~Ponds~Water Features  
We sell & install safety covers and do liner changes

**SALES AND SERVICE**  
Blaise McCarthy  
Member of NSPA • 20 Years Exp.  
Fully Licensed & Insured • SOUTH PLAINFIELD

**Schedule your pool opening now!** (908) 756-3120

**DISCH TREE EXPERTS**

MEMBER  
NATIONAL ASSOCIATION OF TREE CARE

Professional Tree & Shrub Care  
Plant • Feed • Prune • Spray  
Year Round Tree Program  
Land Clearing • Firewood  
Tree & Stump Removal  
Fully Insured, Free Estimates

**24 HR EMERGENCY SERVICE**  
**BILL DISCH • PRESIDENT**  
**(732) 968-5830 • (732) 803-7086 (cell)**

120 FT. CRANE RENTAL

**MW FREDERICKSON**  
WINDOWS PLUS

RESIDENTIAL SERVICES

- ◆ VINYL SIDING
- ◆ WINDOWS & DOORS
- ◆ SEAMLESS GUTTERS
- ◆ GUTTER GUARDS
- ◆ CUSTOM DECKS

**(732) 213-8295 • (866) 355-9393**



## southplainfieldpeople Milestones



Rosalind Heim won a first place ribbon for her German apple cake and an honorable mention ribbon for her double chocolate chip cookies at the Middlesex County Fair, held in East Brunswick August 1-7. Rosalind will be entering her freshman year at South Plainfield High School. She is the daughter of Greg and Lisa Heim of South Plainfield.

### Robert Fessock Promoted to Major

Robert J. Fessock, a 1993 graduate from South Plainfield High School and a graduate from Towson University in Towson, Md., was promoted to the rank of Major in the United States Army.

Major Fessock is a combat veteran of Operation Iraqi Freedom and is currently training for a second deployment overseas. Major Fessock is a commissioner officer in the United States Army Military Police Corps.

### Alexander Named to Dean's List

Stephanie Alexander has been named to the dean's list at Kean

University for the Spring 2011 semester.

Appointment to the dean's list is based on successful completion of at least 12 credits with a semester grade point average of 3.45 or better. Stephanie is a 2010 graduate of

Send Your  
Milestones to:

spobserver@comcast.net

## Statue of Blessed John Paul II Placed at OLC

Following the 4:30 p.m. Mass on August 6, Bishop Edward Janiak, Auxiliary Bishop from Wroclaw, Poland and a close friend of Pastor Fr. Maciej Melaniuk, blessed and dedicated a new statue of Pope John Paul II to Our Lady of Czestochowa Parish.

The life-size bronze statue of the late Pope stands right outside the church, facing Hamilton Boulevard, with his arms outstretched, inviting all to come to him and reminding us, "Not be afraid. The Lord is always with us, until the end of time."

The statue is a gift to the parish from Fr. Maciej. It was created by Brian Hanlon, a New Jersey sculptor. South Plainfield has a second sculpture from Hanlon that is installed at Firefighters Memorial Park and is dedicated to all the South Plainfield volunteer firefighters.

After the dedication, Bishop Janiak unveiled and blessed the newly renovated mosaic of the Blessed Virgin Mary located on the outside wall at the main entrance of the church. The mosaic had suffered much damage throughout the years and was in need of immediate repair. Botti Studio of Chicago agreed to do the work. They removed the mosaic from the wall of the church and transported it to their studio in Chicago where they cleaned it and added the missing pieces.



Statue of John Paul II statue in front of Our Lady of Czestochowa Church.

## Adult School Upcoming Fall Trips

There is space on the following South Plainfield Adult School trips:

- U.S. Tennis Open at Flushing Meadow, N.Y.-Monday, Aug. 29. Bus leaves at 9:00 a.m.
- Uptown New York City Treasures & Feast of San Gennaro-Saturday, Sept. 24. Bus leaves at

8:30 a.m.

- Trapp Family Lodge, Stowe, Vermont & Indianhead Resort, Lincoln, New Hampshire-Tuesday, Oct. 11-Saturday, Oct. 15.
- Tea at the Plaza Hotel and Visit New York City Public Library-Saturday, November 19.

- Christmas in New York City-Saturday, Dec. 3. Bus leaves at 9:15 a.m.

For itineraries on these and any of our other trips, please call the Adult School at (908) 754-4620 ext. 213 or visit the website at spboe.org and go to District tab.

# The South Plainfield Labor Day Parade Public Celebrations Committee invites you to the

## 54th Annual Labor Day Parade

### Monday, September 5

**Parade route starts 10 a.m. at the PAL & ends at the Middle School**  
(Road Closures Begin at 9:00 a.m.)

**9am - 5k Race & 1.5 Mile Walk Before Parade**  
**- 9:15, Middle School**

Musical entertainment by "Black Rose" begins at 12:30 at the Middle School

Soda, Gatorade, Packaged Ice Pops, Funnel Cakes, Apple Fritters, Fried Oreos  
Cotton Candy, Fresh Lemonade, Barbecue Shishkabobs on a Stick,  
BBQ Ribs, Wings, Steak, Chili, Corn On The Cob, Hots Dogs, Wraps  
Supervised Activities and Contests for the Kids

**Activities Begin at 12:30 at the Middle School**

Music by "Anp'd" at Spring Lake Park  
followed by fireworks at dusk  
International Fireworks Company

**Marching Bands**  
**Plenty of Clowns**  
Characters Captain America,  
Astronaut, Statue of Liberty,  
Batman, Ghostbuster, Belle, Elmo,  
Wonder Woman, Snow White,  
Scooby Doo  
**Civic Groups**  
**Lots of Floats**

If you would like to enter a float, march, or participate as a vendor, go to [southplainfieldnj.com](http://southplainfieldnj.com) and fill out the participation form on line.