

# South Plainfield Observer

VOL. 13, NO. 24

Member New Jersey Press Association

60 CENTS

FEBRUARY 19, 2010

## Hoops for Haiti on February 25

With the recent earthquake devastation in Haiti, recreation basketball coach Pete Massett contacted Recreation Director Kevin Hughes and inquired how the town could be of assistance. From that, "Hoops for Haiti" was born.

On Thursday, Feb. 25, the recreation basketball coaches will be divided into four teams and play two, 20-minute games each at South Plainfield High School auditorium starting at 6:45 p.m. Doors will open at 6 p.m. Every volunteer head coach was invited to play in the game and, as of presstime, 40 coaches will be playing.

In addition to donating their time, and for some their bodies, each coach will be donating \$10 towards the charity. There will be a \$3 fee for anyone attending, and any child who wears their 2010 recreation shirt will only be charged \$2. In addition, each child with a shirt will receive a ticket, and if their ticket is drawn, they will be allowed to take one shot for a gift card.

The SPHS Athletic Booster Club will have the snack stand open and will be selling food and refreshments.

When contacted about the event Hughes stated, "South Plainfield has always been a very giving community, and this is a tremendous opportunity to make a difference globally."

All donations prior to and after the event may be dropped off at the PAL building. Checks should be made out to C.O.A.C.H.E.S.-Care.

For more about the event, contact Kevin Hughes at the Recreation Department at (908) 226-7713.



South Plainfield scouts held a candle lighting ceremony commemorating 100 years of Boy Scouting at Spring Lake Park on February 8.

## Scouting Celebrates 100 Years

By Patricia Abbott

What is 100 years old, still growing and going strong? The answer is the Boy Scouts of America. On February 8 Boy Scouts throughout the nation celebrated the 100 birthday of Boy Scouting. The South Plainfield scouting community joined in the celebration with a special evening candlelighting ceremony in Spring Lake Park.

The bitter cold and snow covered

ground did not deter the scouts and their families. Bundled up to brave the weather, flag bearing scout troops and cub packs, along with their families, marched together from the basketball courts to the gazebo following a path lined with luminaries and then gathered around the outside of the gazebo.

Wesley United Methodist Church Troop #309 Scoutmaster Jeff Pauls welcomed the scouts and guests. Reverend Charles Mingle led the opening prayer, followed by *The Pledge of Allegiance*. Each scout troop and pack were introduced, noting which school or organization sponsors them. In attendance were Cubmaster Tom Berry, Pack #207-Franklin School; Cubmaster Don Ardito, Pack #224-Riley School; Cubmaster Scott Waters, Pack #324-Kennedy School; Scoutmaster George Smith, Troop #124-Riley School; Scoutmaster Jim Donelson, Troop #125-VFW; Scoutmaster John Mocharski, Troop #267-American Legion as well as Jeff Pauls' troop.

Pauls gave a brief history of Scouting, beginning with the story of American William D. Boyce's visit to London in 1909. He had lost his way in a thick fog; came upon a youth and asked for directions. Instead of giving him directions, the youth walked Boyce to the location. When Boyce tried to reward the youth for his effort, he was turned down. The young man explained that it was his scouting pleasure to do a "good deed." When Boyce asked the youth what he meant

by "scouting," the boy filled him in. The rest, as they say, is history. Boyce brought the scouting ideals home to the United States and on February 8, 1910, scouting was incorporated in the United States.

Pauls also related some facts about scouting, including: just over two million boys have reached the rank of Eagle Scout, which is the highest honor a young man can receive as a Boy Scout. Only four in 100 who joins scouting will become Eagle Scouts—that's less than one percent of the male population.

The list of famous individuals who have attained the rank of Eagle is impressive, ranging from all levels of government including presidents and actors, astronauts, athletes and authors. Among the notable Eagle Scouts are astronaut Neil Armstrong, the first man on moon; Bill Bradley, pro basketball star and U.S. Senator from New Jersey; James Brady—press secretary to President Ronald Reagan; Arthur Eldred, first Eagle Scout;

(Continued on page 7)

## Library Move Not Finalized

A decision to move the South Plainfield Public Library from its present site on Plainfield Avenue to Montrose Avenue did not occur during Tuesday's Board of Trustees meeting.

Library Board President Eric Aronowitz announced at the start of the public session that no formal action would be taken that evening since negotiations are still ongoing with the landlord. He added that he hoped the board would be able to take action at its Tuesday, March 9 meeting.

Several residents attending the meeting were given the opportunity to express their opinions, and a lively discussion followed.

Opposing the move was Ed Colucci, who said he thought moving the library did not make sense. The new library site is not near any schools and there are no sidewalks for children who wish to walk there. Colucci presented a petition signed by his neighbors opposing the move.

Board Vice President Cheryl Nagel-Smiley explained that most children who use the library are usually driven there. Some of those who walk are only there to socialize and not use the library. She added that the board was discussing the idea of busing children to and from the new site and possibly using the Senior Center as a library annex. These ideas are all still in the planning stages. No final decisions have been made.

The proposed 14,500 square foot property, located at 901 Montrose Ave., is the same size as the new library building proposed about five years ago and voted down in a Democracy Week vote in May of 2008. "We have been into this process for six years and still no closer to getting a new library," said Aronowitz.

"The new library will give South Plainfield a state-of-the-art facility. It will enhance the experience for all residents, from children to senior citizens and will be a place of which we can be proud," said Nagel-Smiley.

The new library location will have no fiscal impact on taxpayers. The borough is required to give the library funding each year which will cover the costs of the lease.



After getting cabin fever during the February 6 snowstorm, Stephanie Murano decided to go outside and make something in the snow. She wanted to create something original—not just another snowman. She started making a pile, and using almost all of the snow in her front yard, shaped it into a car, and then using a spray bottle filled with watered down paint, she created her version of a snowmobile. It took her about three hours to complete.

Want home delivery of the Observer?  
Call 908-668-0010 or Email spobserver@comcast.net.





Want to be informed about the business of your Council and BOE?

## FYI Borough Council & BOE

Council meetings air on Comcast Channel 96 Mondays at 7 p.m. (Check Comcast community bulletin board for last minute time changes.) To purchase a complete copy of a council or BOE meeting, contact the Observer. BOE Meetings air on Thursdays at 7 p.m.

### council meetings

Meets twice a month on Mondays, \*except where noted.

Borough Hall Council Chambers • Questions? 908-226-7605

Agenda Meeting ..... Public Meeting

March 1 ..... March 1

March 15 ..... March 15

All Agenda Meetings begin at 7 p.m. followed immediately by the Public Meeting, unless otherwise noted. Meetings of the Governing Body are held in accordance with the N.J. Open Public Meetings Act (N.J.S.A. 10:4-6 et seq.) in the Council Chambers at 2480 Plainfield Ave.

### planning board

Meets second and fourth Tuesday of the month, \*except where noted.

Borough Hall Council Chambers, 7 p.m. Questions? 908-226-7641

Feb. 23, Mar. 9, Mar. 23, Apr. 13, Apr. 27, May 11, May 25, June 8, June 22,

July 8, July 22, Aug. 10, Aug. 24, Sept. 14, Sept. 28, Oct. 12, Oct. 26, Nov. 9 Dec. 7.

### zoning board of adjustment

Meets second and fourth Thursday of the month, \*except where noted.

Borough Hall Council Chambers, 7 p.m. Questions? 908-226-7641

Feb. 25, Mar. 11, Mar. 25, Apr. 8, Apr. 22, May 13, May 27, June 10, June 24,

July 8, July 22, Aug. 12, Aug. 26, Sept. 9, Sept. 23, Oct. 14, Oct. 28, Nov. 11\* and Dec. 9.\*

### board of education

Meets Wednesdays at 7:30 p.m. at Roosevelt Administration Gymnasium on Jackson Ave.

\*except where noted.

Committee of the Whole: March 10 and March 31

Regular Public Meeting: March 17 and April 14

### BOE curriculum/technology/student activities

Meets once a month on Wednesdays at 4 p.m. in 2nd floor conference room,

Roosevelt Administration Building on Jackson Ave.

March 3 (April to be announced)

### BOE buildings & grounds

Meets second Monday of the month at 7 p.m., 2nd floor conference room,

Roosevelt Administration Building—March 8

### recreation commission

Meets once a month on the second Tuesday of the month, except July and August

PAL Building, Maple Ave. 7 p.m. Questions? 908-226-7716

### taxpayers advisory group

The Taxpayers Advisory Group (TAG) meets the fourth Tuesday of every month at Borough Hall, 2480 Plainfield Ave. at 7 p.m. Questions? 908-769-0786.

### site plan sub-committee

Meets once a month on the third Tuesday of the month, 7 p.m.

Mar. 16, Apr. 20, May 18, July 20, Aug. 17, Sept. 21, Oct. 19, Nov. 16, Dec. 21

### environmental commission

Meets once a month (second Wednesday) Borough Hall Conference Room, 8 p.m.

Questions? 908-226-7621: Mar 10, April 14, May 12, June 9, July 14, Aug. 11, Sept. 8, Oct. 13, Nov. 10, Dec. 8 and Jan. 12 2011.

### business advisory group

Meets once a month (first Wednesday) Borough Hall Council Chambers, 5 p.m. Questions? 908-757-8100

## In My Opinion

Opinions expressed in this column are not necessarily those of the publisher, nor do we guarantee accuracy.

### To the Editor:

I am a resident of South Plainfield and am questioning the actions of our snow removal personnel. It is currently Friday, Feb. 12 at 5:50 p.m. I live on a secondary street, however, I just witnessed a borough plow come through several times, without salting, and just kind of poking at little piles of snow with the plow blade. My street is almost completely clear and needs no additional clearing, but the plow has now made about six passes with the plow blade down and sparks flying from the dry pavement.

Is this what I am paying taxes for? To pay the same people that made approximately 20 passes with the plow blades up on the day of the snowstorm (while collecting at least time and a half I'm sure!), even more overtime today? Not to mention the additional damage to the roadway from the plows, which I guess we can pay overtime to have repaired by them come springtime?

Maybe I'm the only one in the town noticing this? It would be an interesting topic at a town meeting I'm sure, but I cannot attend them due to the fact that I work at night. I'm sure those meetings are full of the township residents complaining that there is no money left in our budget for snow removal/road repair/etc. Thanks for your time!

**BRIAN LUBER**

### Dear Editor,

Governor Christie's Executive Order, which effectively confiscates the surplus in local board of education budgets to offset the anticipated shortfall in the state budget is simply wrong.

The Governor's unilateral action, taken without the input of the state legislature, will increase property taxes in East Brunswick by \$5.4M, South Plainfield by \$1.6M, South River by \$750,000, Metuchen and Spots-

wood by \$400,000 each and Edison by approximately \$120,000. In total the governor is raiding the accounts of some of the best performing school districts in our state by a total of about \$8.5M. These are not state funds. They were raised from the property taxes paid by the hard working middle class families of the 18th legislative district who we are honored to represent.

During the campaign, candidate Christie stated that education would be a top priority of his administration. With one stroke of his pen he has reduced aid to K-12 by a half billion dollars and reduced aid to higher education by over \$60 million.

We agree that government must be leaner and more efficient. We support efforts to reduce costs. This imprudent action does just the opposite. It will hurt middle class families and jeopardize the education of our children.

We encourage everyone to contact the governor's office and express your outrage over this executive order. This is still a democracy after all and the will of the people must be followed. We can assure you that we will do whatever we can to reverse this decision.

**ASSEMBLYMEN PATRICK J. DIEGNAN, JR. AND PETER J. BARNES**

### Dear Mayor Butrico and Council Members,

Despite a prodigious effort to clear the Walnut Street Park stream bed of debris, and controlling knottweed infestation in the flood plain down stream, serious problems still exist in our neighborhood. These problems are due to the unexplained high water table, coupled with widespread and dramatic settling of the ground.

Let's talk about specifics: there was a cave-in of about 10 feet deep in Rich McCriscin's driveway the last few years, and a large sink hole has formed in this same area about 15 feet away

### Submit Your Letters to the Editor:

Send your letters to South Plainfield Observer, 1110 Hamilton Blvd., Suite 1B, South Plainfield, NJ 07080, or fax to 908-668-8819, or via E mail: spobsobserver@comcast.net. Deadline is Monday, 5 p.m. Letters must be accompanied by a name and telephone number for verification. Limit letters to no more than 200 words. We reserve the right to refuse a letter, to edit for clarity or length, and to limit the number of letters submitted on the same subject. Submission is not a guarantee of publication. We do not accept anonymous letters. Letters are strictly opinion.

on the Murrell property. The very high water table and continuous sump pump flow from basements of the Lubber and Johnson properties on McDonough Street and Hill Hollow Road, respectively. These basements have either experienced flooding issues with the loss of considerable property or other damage due to sump pump failure. Residents on Elizabethtown Court also have experienced the onset of sump pump usage which has not stopped since January of 2007, in one case. Also, very high volumes of water are consistently being pumped from one residence on 10th Avenue that has yet to be explained. The Johnson residents report that the issue of pumping from their basement started over five years ago.

Here is an observation that may be related to the high water table in our neighborhood: At the entrance of Walnut Street Park near McDonough Street a large erosion channel started in 2008 formed due to the runoff from Clinton Terrace. A case could be made that this increasing erosion channel is linked to the issues from the Lubber and Johnson properties.

We all believe it would be prudent to build a storm culvert to handle the large flow of water from Clinton Terrace directly to the stream bed instead of using the ground at Walnut Street Park to adsorb and transport this large water flow. Another storm culvert at the entrance of Walnut Street Park at McDonough Street would also prevent surface water standing and contributing to the water table.

It was discovered in early January that the previous residents of the Johnson property had made dramatic alterations to the two entry points of the surface water flow into the buried culvert of the stream. They may not have realized that alteration at these

(Continued on page 10)

## Are Unemployment Benefits Taxable?

With the passing of the AARA, your first \$2400 of Unemployment Pay is tax exempt. What else did the AARA do for you? Come in and we will help figure it out.

## Oak Tree Accounting Associates

142 Oak Tree Avenue, South Plainfield  
Certified Public Accountants 908-279-6092

James P. Belz, CPA, MBA



## Image is Everything!

15% OFF ANY JOB Over \$2,500 or more

Sign up up now for 2010 service

Full maintenance contracts. New customers only. Choose any pattern & any color on all patios. Drivers and retaining contract signed by 2/26/10. Must bring in old. Cannot combine savings.

**NEW IMAGE**  
Landscaping & Lawn Care  
Over 20 Years Experience

Come & See Our New Displays

Full Service Lawn Maintenance  
Spring/Fall Cleanup & Shrub Trimming  
Cutting/Mulching  
Lawn Renovation  
Grading, Seeding, Sod  
Decorative Landscape-Retaining Walls  
Pavers, Walkways, Patios  
Decorative Stone-Drainage

**OPEN 7 DAYS**  
Mon-Fri 7am-5:30pm  
Sat 7am-3:30pm, Sun 8am-2pm

**908-822-1000**  
email: newimagescott@yahoo.com  
delivery available

ALL MAJOR CREDIT CARDS ACCEPTED

### LANDSCAPING SUPPLIES & NURSERY

- Shrubs
- Red, Black, Tan Playground Mulch & Root Mulch
- Topsoil Seed, Erosion Products, Weed Mat,
- River Red Stone & Stone Dust
- Large Selection of Small Engine Parts & Landscaping Supplies & More

### NICOLOCK

PAVERS & RETAINING WALLS

Contractors Welcome  
FULLY INSURED FREE ESTIMATES  
We Can Help You Do It Yourself or We Can Do It For You

Come Visit Us at 2801 Hamilton Blvd. South Plainfield

## HEATING OIL

For **GREAT PRICES** and **GREAT SERVICE**

Call: 908-930-6678

7 DAYS A WEEK!

**RG Fuel Oil**

South Plainfield, NJ • 100 gal. minimum

Get all the South Plainfield news you want.

**Subscribe!**

Call 908-668-0010

or E-mail: spobsobserver@comcast.net

## South Plainfield Observer

The South Plainfield Observer is published weekly on Fridays by G&G Graphics Inc.

How to Reach Us



1110 Hamilton Boulevard, Suite 1B, South Plainfield, NJ 07080

Ph: 908-668-0010 • Fax: 908-668-8819

Email: spobsobserver@comcast.net

www.spobsobserver.com

### EDITORIAL

908-668-0010

### CIRCULATION

To subscribe to the Observer call (908) 668-0010

### ADVERTISING

Display (908) 668-0010  
Classified (908) 668-1258

Publisher/Editor-in-Chief ..... Nancy Grennier  
Associate Publisher ..... Wayne Grennier  
Art Director/Associate Editor ..... Susan Kaneps  
Staff Writer/Photographer ..... Patricia Abbott  
Staff Writer ..... Libby Barksy

Editorial Assistants ..... Jane Dornick, Jean Fultz  
Production Assistants ..... Jennifer DeCosta,  
Holly McDede, Barbara Smith  
Advertising Sales ..... Jane Dornick, Jean Fultz  
Roxanne Cortese

The South Plainfield Observer (U.S.P.S. 018253) is published weekly, except Thanksgiving week. Second class postage paid at South Plainfield, New Jersey 07080-9998. Postmaster: Forward change of address orders to G&G Graphics Inc., 1110 Hamilton Blvd., Suite 1B, South Plainfield, NJ 07080-2004. Subscription rates \$29.95/year in South Plainfield; \$34.95 year out of town.

### SUBMIT YOUR ARTICLES

We encourage the submission of stories and photos. To get an article published: Type (double spaced) the article and mail, email or fax. Include name, address and telephone number. **Deadline for submission is Monday 5 p.m.**

### LETTERS TO THE EDITOR

Submit letters to the editor by mail, email or fax. Letters should not exceed 200 words. We reserve the right to edit for clarity or length. Letters must include name and phone number, for verification.

To comment on the content or to suggest a special story idea, contact the publisher at (908) 668-0010.

The publisher is not responsible for typographical errors.





## To Promote & Protect Public Health & Welfare

MIDDLESEX COUNTY PUBLIC HEALTH DEPARTMENT

By Ronald G. Rios, Chair, Committee of Public Health & Education

# Prescription Drug Safety

Prescription drugs and over-the-counter medicines, when stored or disposed of carelessly are a danger to everyone in your home, especially curious teens and small children. You might not realize it, but right now in your medicine cabinet or bathroom closet, is a potentially deadly collection of over-the-counter and prescription medications that, when taken in the wrong dose, combined or otherwise abused, can lead to serious health risks.

As parents, we need to teach our children that all drugs can be harmful, especially if they are misused. In their least lethal instances, a large dose of prescription or over-the-counter medications can cause difficulty breathing, nausea, vomiting, dizziness and blurred vision, while the worst cases of abuse of these same medications, can lead to coma and even death.

What makes these medications such a serious threat is how readily available they are in our homes. Never assume that your child or teen will not experiment with the contents of your medicine cabinet. Children are curious by nature, especially when it comes to things they know they shouldn't touch. The bottom line is: If your kids do not have access to these medications, they can't hurt themselves with them.

Here are some tips for restricting access to prescription and over-the-counter medications in your home:

- Hide all medications in a secure location, which may not be the bathroom medicine cabinet.

- Alert grandparents who visit or host their grandchildren that their prescriptions should always be locked up and hidden away. This includes individual pills, which curious toddlers may put into their mouths.

- Discuss with neighbors and parents of your child's friends the importance of keeping prescription medications out of reach.

- Discard any prescription medications that are left over or expired.

New Jersey Department of Environmental Protection guidelines for the proper disposal of prescription drugs are:

1. Keep medicine in original container. Mark out personal information on prescription bottles.

2. Mix liquid medicine with undesirable substances like coffee grinds, cat litter or dirt. Dilute pills with water, then add coffee grinds, cat litter or dirt.

3. Place bottles in an opaque container, like a yogurt container, and secure lid; or wrap in a dark colored plastic bag.

4. Hide the container in the trash. Do NOT recycle.

We, as parents and caregivers, are the first line of defense in addressing this threat and it is up to us to secure all medications and keep our kids safe. Let's all make the effort in our homes to keep unwanted medications out of the wrong hands.

For additional information, contact the Middlesex County Public Health Department at (732) 745-3100.

## View Borough Codes, Regulations And More Online

Residents can now access the borough bylaws, regulations and codes online by logging on to: [www.ecode360.com/?custId=SO0812](http://www.ecode360.com/?custId=SO0812). Once there, you can search for specific topics of interest to you; or visit the borough's Web site at [www.southplainfieldnj.com](http://www.southplainfieldnj.com) and follow the link on the top left of the page.

## CAREGIVER SERVICES

### Marisol's Home Caregiver Services

Family owned & operated  
Providing affordable  
in-home care, daily or live-in

NJ State licensed, fully insured & bonded

Services include and are not limited to:

- Companionship • Meal prep
- Personal care • Laundry
- Transportation • Errands
- Light housekeeping • Medication reminder

Please call for a free  
in-home consultation.

Call (732) 912-9312

Please patronize our  
advertisers. They allow  
us to bring you the news  
about South Plainfield!

**Century 21**  
Moretti Realty  
(908) 755-5300  
Ext. 302  
(908) 578-1166

Experience Isn't Expensive,  
It's Priceless.

### THE LACERDA TEAM

Andrea Lacerda, Jesse Lacerda  
Sue Espin, Michele Leavy

[www.LacerdaTeam.com](http://www.LacerdaTeam.com)

225 Maple Ave., South Plainfield, NJ 07080 South Plainfield's Premier Real Estate Team

# Disability Advocate Jackie Jackson Receives Recognition from Borough Council

By Libby Barsky

When Jackie Jackson was diagnosed with multiple sclerosis her life gradually began to change. "I went from being an able-bodied person to using a cane, a walker, a manual wheelchair, and now I use an electric wheelchair on a daily basis to get around," said Jackson.

Jackson has been wheelchair bound for the past seven years and is very familiar with the difficulties it can present, for example where curbs are high, where buildings lack a graded section for wheelchair access, where door entrances are not wide enough to maneuver and the difficulty accessing public bathrooms not wheelchair accessible.

Being wheelchair dependent has led Jackson to become a disability advocate with a mission to break down the barriers and make access possible in public areas for all who are disabled.

"My major advocacy project is the Accessibility Tours Project in partnership with the National Multiple Sclerosis Metro Chapter to make the public and elected leaders aware about the problems of those who rely on wheelchairs," said Jackson.

Jackson's first accessibility tour took place in Franklin Township in 2006. In recognition of the 19th anniversary of the Americans with Disabilities Act (ADA), three tours were held last year in Edison, South Plainfield and Plainfield. "I'd like to expand the tours from the local level to the state level, and then move to the federal level," explained Jackson.

The impact of the accessibility tour resulted in the borough council's approval and awarding of a contract to



Mayor Charles Butrico presents a proclamation to Jackie Jackson at the January 4 council meeting.

RJR Engineering Co. Inc. of Califon to renovate the bathrooms in Borough Hall to make them barrier free. The \$55,450 in funding came from a 2009 Community Development Block Grant.

The council is currently seeking recommendations on how the 2010 Community Development Block Grant might be used. Jackson holds a three-year term as one of five members of the Community Development

Citizens' Advisory Committee that reviews and makes recommendations to the council and mayor on the use of the grant. She is focused on recommendations that will increase access for the disabled. "My ultimate future plan is to make America fully accessible so that people with disabilities, the elderly and anyone who is challenged can actively participate into mainstream activity."

## Environmental Commission Sets 2010 Meeting Dates

The South Plainfield Environment Commission's meetings take place on the second Wednesday of every month at 8 p.m. in the borough hall conference room.

The 2010 Environmental Com-

mission meeting dates are: March 10, April 14, May 12, June 9, July 14, Aug. 11, Sept. 8, Oct. 13, Nov. 10, Dec. 8 and Jan. 12, 2011.

If residents have questions, they can call (908) 226-7621.

A Source for Medical/Dental/Wellness Professionals

## Your Health MATTERS

### Advanced Chiropractic & Wellness Center



Dr. Norayr Ozbalik, DC  
16 years experience

- Neck pain, back pain, headaches, numbness, tingling, weakness & pain in arms and legs • Fibromyalgia • Sciatica
- Personal Injury • Bulging and herniated discs
- Convenient hours Mon-Sat. • Walk-ins Welcome

904 Oak Tree Avenue, Suite O, South Plainfield

(908) 561-1777 Fax: 908-561-9711

Most major medical insurance & Medicare accepted

## FRANK'S Automotive



Family Owned  
Since 1989

1<sup>st</sup> Time Customers receive \$5  
off on a Lube, Oil, and Filter  
Service or \$20 off any service  
over \$100.00

1521 Park Ave  
So Plainfield NJ 07080

[franksautomotiveservice.com](http://franksautomotiveservice.com)

## A Job Done Right Guaranteed

Introducing our  
**18 Month or 18,000 Mile  
Limited Warranty.**

A 50% longer warranty shows  
we're serious about fixing your  
car properly the first time and  
we put it in writing.

**908-753-0277**

## YOUR HEALTH MATTERS TO US.

Hospital Beds • Wheelchairs • Walkers  
Diabetic, Surgical & Ostomy Supplies  
Wound Care • Oxygen

Major Medical & Medical Billing Available  
**FREE DELIVERY**

Regional  
Hospice &  
Homecare  
Provider

24-Hour Emergency Care Service

**Twin City Pharmacy**  
Tel. (908) 755-7696 Fax (908) 755-6003

1708 Park Ave., South Plainfield, NJ 07080 (Next to Aldi's Market)



# Events

## Lenten Fish Dinners At Sacred Heart

February 19 & 26  
March 5, 12, 19 & 26

The South Plainfield Knights of Columbus Council #6203 and Sacred Heart Church are sponsoring Lenten fish dinners on Friday, Feb. 19, 26, March 5, 12, 19 and 26. Dinners are served in the school cafeteria, 149 South Plainfield Ave., from 5 to 7 p.m. Menu: fillet of fish (fried, broiled, parmesan), pasta (cheese ravioli, manicotti or linguini) or pizza; fresh garden salad, rice pilaf, French fries or macaroni and cheese, cole slaw, coffee, tea or cold drink, plus dessert. Take out available. Admission is \$8 for adults, \$7 for seniors and \$4 for children. Pay at the door. Stations of the Cross will be held in the church at 7 p.m.

## Blackrose to Perform

February 20

Blackrose, a band performing classic rock and roll music and today's hits, will perform at Rug's and Riffy's, located at 493 Rahway Ave. in Woodbridge on Saturday, Feb. 20. at 10 p.m. No cover charge.

## SPBA Monthly Meeting

February 25

The South Plainfield Business Association monthly meeting will be held on Thursday, Feb. 25 at Sherban's Diner, located on Front Street. A business card exchange and light breakfast served at 8:30 a.m., followed by the general membership meeting at 9 a.m.

Non-members are welcome to attend the general membership meeting

as well as any networking event prior to joining.

For more information on the SPBA, visit the Web site at spba.biz or contact Debra Anne Leporino at (908) 754-6914.

## Charity Basketball Game at SPHS

February 25

The Recreation Department along with the COACHES C.A.R.E organization are sponsoring a charity basketball game amongst the recreation head basketball coaches on Thursday, Feb. 25 at 7 p.m. at the high school.

Admittance fee is \$3 for adults, \$2 for any child wearing their recreation basketball shirt.

## Comedy Show at Grant School

February 27

Grant School is holding a comedy night fundraiser on Saturday, Feb. 27 at the Senior Center featuring national touring comedian Dave Reilly. Tickets are \$25 each. Show starts at 7:30 p.m. Bring your own food and drinks. Doors open at 6:30 p.m. All profits to be used for Stokes trip.

For tickets and information, call Debbie at (908) 227-7834, E-mail dpete1851@comcast.net or call Christine at (908) 705-4201.

## Boy Scout Troop 125 Spaghetti Dinner

February 27

Boy Scout Troop 125 is hosting a spaghetti dinner at the VFW Post

#6763, 155 Front St., on Saturday, Feb. 27 from 3 to 8 p.m. Menu includes spaghetti and meatballs, salad, bread, drinks and dessert. Take out available. Price per person is \$5. The money raised will be used for summer camp.

For more information, call Maria at (908) 303-8314.

## Project Graduation Tickets on Sale

March 6

The South Plainfield High School PTA will be hosting its annual auction/raffle on Saturday, March 6 from 7 to 11 p.m. (doors open at 6 p.m.) in the high school gym. All profits go towards Project Graduation for the Class of 2010. Price per ticket is \$12.

For tickets, contact Tracey Hartmann at (908) 755-4349. This event has sold out in past years, so please call as soon as possible for tickets.

For information or to make a donation, contact Sharon Miller (908) 754-6461.

## Boy Scout Troop 309 Clothing Drive

March 13

Boy Scout Troop 309 will be holding a clothing drive fundraiser on Saturday, March 13 from 8 a.m. to 3:30 p.m. in the parking lot of Wesley Methodist Church, 1500 Plainfield Ave. We are collecting usable clothing, shoes (please bag separately), accessories, linens, stuffed animals, hard toys (dolls, cars, etc.), children's activity sets and small and medium bikes.

If you need items to be picked up, call Nancy Pauls at (908) 917-4700.

## SENIOR CENTER *Calendar*

### Coming Up.....

April 25-27 Tulip Festival  
May 13-15 Washington, DC  
June 7-10 Niagara Falls  
(Call the senior center for more info)

### MONDAYS

Silver Sneakers ..... 8:30 am  
Crocheting ..... 9:30-11:30 am  
Yoga ..... 10:30 am  
Art Class ..... 11:30 am

### TUESDAYS

Bingo ..... 10 am-2 pm  
Ladies Group ..... 10 am

### WEDNESDAYS

Call (908) 754-1047 for more info or visit  
www.southplainfieldnj.com

Aerobics ..... 8:45 am  
Line Dancing ..... 10 am  
Computer 10 am, 11:30 am, 1 pm  
Crocheting ..... 1 pm  
Tai Chi ..... 2 pm

### THURSDAYS

Active Seniors ..... 8:30 am  
Shopping Trip ..... 9 am  
Crafts Class ..... 10 am  
Computer 10 am, 11:30 am, 1 pm  
Exercise Class ..... 1:15 pm

### FRIDAYS

Bingo ..... 10 am-2 pm

Daily Activities: Morning coffee, pool, cards, board games, computer classes, exercise, art, Tai Chi, yoga and crafts.  
Lunch Served Monday-Friday.

Senior Center is open daily 9 a.m.-4 p.m. Closed Saturdays and Sundays

## Elks Corned Beef and Cabbage Dinner

March 13

The South Plainfield Elks Veterans Committee is sponsoring their annual corned beef and cabbage dinner on New Market Avenue on Saturday, March 13 from 4:30 to 9 p.m. Adults \$12, children \$5. All you can eat, includes soda, dessert and cash bar.

For more information, call Lou Peralta at (908) 756-6406.

## Franklin School PTO Auction/Raffle

March 20

The Franklin School PTO will hold its 15th annual auction/raffle, "Spring is in the Air," on Saturday, March 20 in the high school gym. Doors open at 6:30 p.m. Tickets are \$10 in advance and \$12 at the door. All proceeds go to the Franklin School students.

For information or tickets, call Sue at (908) 797-6218 or Karen at (908)

723-4546, or come to our advance sale night on Thursday, Feb. 25 from 6 to 7 p.m. at Franklin School.

## — Out of Town —

## Temple Sholom Pray 'N Play Service

February 20

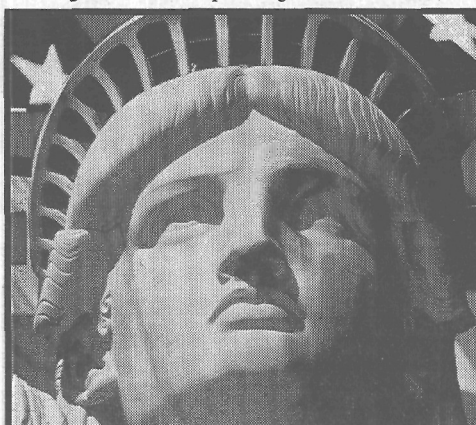
Temple Sholom of Fanwood/Scotch Plains, Martine and LaGrande avenues in Fanwood, invites families with children ages four and under to an interactive Shabbat Pray 'N Play featuring music, maracas, puppets and parachutes. The 30-minute service begins at 10 a.m., followed by a free bagel brunch. Older siblings are welcome.

For more information, call (908) 889-4900.

## Jewish Textile Demo And Lecture

February 21


The Jewish Textile Lecture and Demonstration has been rescheduled



## GRAND OPENING

A new Liberty Tax Service Office is here!

Hadley Shopping Center  
(Near Kohl's)  
4931 Stelton Road, South Plainfield  
(908) 757-1040



# \$75 OFF

## Tax Preparation

Good at participating locations. For new customers.  
Not valid with other offers. Expires 3/15/10.

## Receive up to \$1,900 in Rebates & Tax Credits!

**COUPON**  
**FREE ESTIMATE**  
Carrier 80%  
High Efficiency Gas Furnace  
Installed, as low as  
**\$1799<sup>00</sup>**



**NORTHERN** 732-906-8050  
**HEATING & COOLING** www.northernheatingcooling.com

Commercial & Residential Air Conditioning & Heating  
737 New Durham Road, Edison, NJ

There's ordinary  
post-hospital  
subacute rehab care...  
then there's

*AristaCare*<sup>SM</sup>

**AT CEDAR OAKS**

Subacute Reinvented • Luxury Redefined

Learn about the AristaCare difference  
1311 Durham Avenue, South Plainfield, NJ 07080

CARF Accredited Rehabilitation  
& Stroke Center

732-287-9555  
www.aristacare.com



for Sunday, Feb. 21 at 3 p.m. at the Plainsboro Municipal Building in Plainsboro. Free of charge; advance registration is required.

For more information and to register, call (732) 745-4489.

## Woodbridge WOWs Open Dance

February 21

Woodbridge Widows Or Widowers will hold an open dance on Sunday, Feb. 21 from 7 to 11 p.m. at the Knights of Columbus Hall, Morrissey Ave. in Avenel. Light refreshments. Everyone is welcome. Admission \$10 members; \$12 guests.

For more information call (732) 381-3255 or (908) 757-0515.

## Depression/Bipolar Monthly Meeting

February 24

On Wednesday evening, Feb. 24, the Depression and Bipolar Support Alliance will feature at its monthly meeting a panel of people living with mood disorders. The meeting will take place at 7:45 p.m. at Morristown Unitarian Fellowship, 21 Normandy Heights Rd. in Morristown. The public is invited to attend all meetings; a nominal donation is requested from non-members.

In case of hazardous weather call (908) 377-5245 after 6 p.m. for cancellation information.

## Bishop Ahr High School Tricky Tray

February 26

Bishop George Ahr High School, One Tingley Lane in Edison, is holding their 31st annual tricky tray, "Welcome to the Jungle," on Friday, Feb. 26. Admission is \$20 and includes door prize ticket and light refreshments. Guests are welcome to bring their own snacks. Doors open at 5 p.m.; prize calling at 8 p.m. Prize baskets, 50/50s and various other prizes. No one under 18 admitted. Purchase tickets in advance only.

Call (732) 317-9425 or 732-423-2206 for tickets.

## Steppin' Out Singles Dance Party

February 27

Steppin' Out Singles is holding a "dress down" dance party on Saturday, Feb. 27 at 8 p.m. at the Woodbridge Hilton Grand Ballroom, 120 Wood Ave. South in Iselin. Ages 40 and up; neat jeans OK tonight; \$15 admission.

For information, call the 24 hour hotline at (732) 656-1801.

## Youth Day at Mt. St. Mary's Academy

February 27

The Diocese of Metuchen sponsored "Youth Day: Transformer" will be held on Saturday, Feb. 27 from 11 a.m. to 7 p.m. at Mount Saint Mary Academy in Watchung. Music, games, workshops and liturgy mass. The sacrament of reconciliation will be available before Mass to be celebrated at 6 p.m. Cost: \$35 per teen (8th-12th grades).

For more information, call (732) 562-1990, ext. 1635 or visit [www.diometuchen.org](http://www.diometuchen.org).

Does your organization need publicity for an event? Submit it for publication in Events Around Town.

Email: [spobserver@comcast.net](mailto:spobserver@comcast.net)



Pack 207 Cub Scouts at the February 12 Pinewood Derby.

## Cub Scout Pack Holds 207 Pinewood Derby

Cub Scout Pack 207 held their annual Pinewood Derby races at Franklin School on February 12, and everyone had a great time. The scouts raced their hand-crafted wooden cars along the pack's 42-foot long state-of-the-art aluminum track and took home trophies, loads of fun and great memories.

Cubmaster Tom Berry would like to thank all the parents who helped setup and run the race.

The top three winners by rank are: Webelos-first place, Alec Pacz; second place, Tomasz Tarnowski, third place, Sam Campbell; Bears-first place,

Nicholas McGeehan; second place, Jack O'Shaughnessey; third place, Nakil McCloud; Wolves-first place, Chase Atkinson; second place, Braedon Dobrynio; third place, Nicholas Aiello; Tigers-first place, Patrick Berry, second place, Christopher Lee; and third place, Cole Bartolotti.

## Just Two Weeks to Project Graduation Auction

The Project Graduation auction/raffle is just two weeks away. It will be held on Saturday, March 6 from 7 to 11 p.m. at South Plainfield High School. Doors open at 6 p.m.

Tickets are currently being sold; so get yours before they are gone (see below for ticket info). All proceeds will go towards Project Graduation. This year marks the 22nd year of providing graduating seniors with a graduation celebration. We hope the class of 2010 can join us at the auction.

It is not too late to donate; however, since the auction is only two weeks away, donations must be received no later than February 27. After that date we can only accept monetary donations or gift cards/gift certificates. Gift cards/certificates can be from any store or restaurant.

Monetary donations can be mailed to SPHS, 200 Lake St., South Plainfield, N.J. 07080, Attn: SPHS PTA. Make checks payable to: SPHS PTA-Project Graduation.

Together we can make this event a success for our graduating seniors with the help and support of our wonderful community.

For ticket information, please contact Tracey Hartmann at (908) 755-4349. Give her your name, phone number and the number of people

you would like at your table.

**Theme Baskets/Single Gift Items-** We need to receive these as quickly as possible. Remember families can go together on a theme basket or gift item.

**Donations-Need to be received ASAP** in order to be recognized in our program. All families, businesses and community/educational organizations will be acknowledged for their generous contributions. Our program will be finalized and printed in 10 days, so please try to get your donations in as quickly as possible.

**Outside Business/Corporate Donations-** Please ask the business or corporation you work for if they will make a contribution.

**Auction Volunteers-** We still need help in the following areas: Set-up noon to 3 p.m.; ticket sales 6 to 7 p.m.; and drivers to help move auction prizes from the homes where they are being stored to the high school 11:30 a.m. If interested in helping, contact the high school's main office (908) 754-4620, ext. 248. Volunteers will receive a phone call as a reminder.

**Solicitation Volunteers-** Thank you all for your help. Submit all solicitation sheets, as well as any donations you have received from local businesses, to Mary Cargill at (908) 755-

9717 by Monday, Feb. 22.

**PTA Meeting-** Thursday, Feb. 25 at 7 p.m. in the high school Tiger's Den. This is our last meeting before the auction. It is important for all volunteers to attend from 7 to 7:30 p.m.

**Auction Information-** Contact Sharon Miller at (908) 754-6461 for information on the auction or with any questions you may have.

The Class of 2010, the SPHS PTA, and the SPHS sincerely appreciate your support!

-Submitted by Sharon Miller

## Riley Students Donate \$1,000 To Haiti Victims

Immediately following the devastating earthquake in Haiti, the John E. Riley School Student Council, under the direction of advisors Joanne Otowski and Christine Dispenziere, organized a fundraiser for students, faculty and staff. More than \$1,000 was collected in one day.

The student council then invited Adam LiVecchi, husband of string teacher Sarah Bruce LiVecchi, to come to Riley School and discuss his experiences during the earthquake. LiVecchi is a missionary whose organization, Precious Pearl Inc., was already in Haiti doing voluntary work when the earthquake struck. LiVecchi and his group were fortunate to have escaped unharmed.

The student council decided to donate all the money raised to his organization and presented the money to LiVecchi during the assembly. LiVecchi discussed the dire situation and showed slides. He explained that the money would be used to directly help the residents, especially the children, of a small town outside of Port-au-Prince. He described how the outlying areas of the country had also been severely affected, even though the news media focus was mainly on the capital city, and that money was urgently needed in small villages.

LiVecchi thanked the children for their generosity and for inviting him to their school.

Submitted by Barbara Harris

Please patronize our advertisers. They allow us to bring you the best of South Plainfield!

Serving South Plainfield Since 1994 [www.cicciospizza.com](http://www.cicciospizza.com)

## Ciccio's Pizza

134 Maple Avenue, South Plainfield, NJ  
(Across From Firehouse) (908) 753-4060  
Open 7 Days

**Phone Ahead For Fast Pick Up**  
Mon. & Thurs. 11am to 10pm  
Fri & Sat 11am to 11pm  
Sunday 12pm to 10pm

**WE NOW SERVE FRIED CALAMARI**

**FRIED ZEPS (FRI & SAT)**

**FRIDAY'S LENT SPECIALS** Prices good through 4/2/10

Lobster or shrimp ravioli served in vodka sauce \$7.99 <small>(Add shrimp for \$2 more)</small>	Seafood Salad \$8.99	Personal pizza with baked ziti \$4.99 (10 inch)	Personal pizza with shrimp and vodka sauce \$5.99 (10 inch)
--	----------------------	---	---

## THE SALON PROFESSIONAL ACADEMY

[www.tspaNewJersey.com](http://www.tspaNewJersey.com)

Hadley Center, 4985 Stelton Rd, S.Plainfield, NJ 07080

**APPOINTMENTS: 888.450.0780**

PRESENT THIS AD TO RECEIVE

**\$3 OFF HAIRCUT**

All services performed by supervised students. Expires 4/30/10

PRESENT THIS AD TO RECEIVE

**\$5 OFF FACIALS**

All services performed by supervised students. Expires 4/30/10

PRESENT THIS AD TO RECEIVE

**FREE MANICURE W/ A PEDICURE**

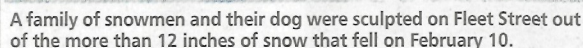
All services performed by supervised students. Expires 4/30/10

**ENDORSED BY REDKEN FOR EXCELLENCE IN EDUCATION**

**REDKEN**  
5TH AVENUE NYC








- On Feb. 2 Daniel Joseph Scullion, 20, of Warminster, Pa. was arrested at Home Depot for shoplifting tools.
- On Feb. 6 Daniel Michael Lourenco, 26, of South Plainfield was arrested for eluding a police officer.

*Summer Camp Special*

*"School Age"*

**CREATIVE KIDS ACADEMY**



*Special* 7 am-4 pm **\$775** per month  
Must be entering 1st, 2nd or 3rd Grade  
Must Register for July & August  
Must Pick Up by 4 pm (late care available for a fee).

*We also offer 2, 3, 4 & 5 year old programs*

\*\*\*\*\*

**1615 Clinton Avenue, South Plainfield • 908-753-4477**

According to a National Newspaper Association survey, local community newspapers are the primary source of information for both news and advertising in local communities by a 5-1 margin over the next most popular media. That's good news for towns with community newspapers.



**MOHN'S  
FLORIST**

2325 plainfield ave., so plainfield  
908 561 2808  
[www.mohnsflorist.com](http://www.mohnsflorist.com)

- weddings and receptions
- sympathy designs • everyday floral gifts
- fruit, gourmet, gift baskets
- dish gardens • balloon bouquets

*let us create anything  
you can imagine....*

---



Looking for QUICK CASH  
in this difficult economy?  
Clean out your clutter for cash!

To place your classified ad  
call 908-668-0010.



# BSA Celebrates 100 Years

BOY SCOUTS OF AMERICA ★ 100 YEARS OF SCOUTING



Area Council for many years. The council camp was Camp Watchung in Glen Gardner and it opened in 1927. It covered 440 acres. Joe Lowondy, scoutmaster of Troop 24 at the VFW for many years, was in the first troop to camp there. Joe died in 1975. Over the years the camp developed a rifle range, a large swimming pool and a king-sized mess hall. The mess hall served as a training facility for many of the badges that required indoor instruction and leader training sessions. The camp was sold in the 1980s for housing development. The council camp is now located in upstate New York," Tuthill explained.

The mission of the Boy Scouts of America is to prepare young people to make ethical and moral choices over their lifetimes by instilling in them the values of the Scout Oath and Law. The oath reads: "On my honor I will do my best, to do my duty to God and my country, and to obey the Scout Law; to help other people at all times; to keep myself physically strong, mentally awake, and morally straight." The Scout Law says: "A scout is trustworthy, loyal, helpful, friendly, courteous, kind, obedient, cheerful, thrifty, brave, clean, and reverent."

Also on hand to help celebrate



were Councilmen Matthew Anesh, Ray Rusnak and Rob Bengivenga and Councilwoman Chrissy Buteas, Superintendent of Schools Jose Negron, Franklin School Principal Ellen Decker-Lorys, Kennedy School Principal Lisa Parker, American Legion Post #243 Commander Jim Yednak, Elks Lodge Exalted Ruler Barbara Muller and Knights of Columbus Grand Knight Bill Butrico.

The ceremony concluded with a closing prayer by Reverend Mingle. Over 160 scouts were on hand, along with family and friends.

See the *Observer* next week for a glimpse of how Boy Scouting came to South Plainfield when a former resident shares memories of his family and grandfather, known to many as "padre."

(Continued from page 1)

Gerald Ford, U.S. President and the first Eagle Scout to become president; Oswald "Ozzie" Nelson-actor; H. Ross Perot, self-made billionaire and presidential candidate; William Sessions, FBI director; Steven Spielberg, movie producer; Sam Walton-Wal-Mart Founder.

Not all scouts achieve the Eagle rank, but there are still many famous men who were involved in scouting, including Presidents George W. Bush, Bill Clinton and John F. Kennedy; Walter Cronkite; Bill Gates and Paul

McCartney.

Mayor Charles Butrico presented Scoutmaster Pauls with a proclamation from the borough council recognizing the 100th anniversary of the Boy Scouts. The highlight of the evening arrived when the scouts and their families lit candles in commemoration of the 100th anniversary of Boy Scouts in the U.S. After the candles were lit, the boys recited the Boy and Cub Scout oaths and laws.

Bill Tuthill, a former scout leader, added a bit of local history. "The council for this area was called the Watchung

**2009 New Jersey Clean Energy Leaders**

NEW JERSEY BOARD OF PUBLIC UTILITIES

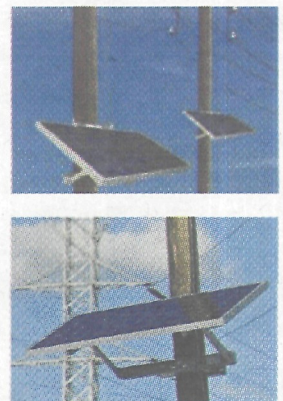
**PETRA SOLAR**  
Intelligent Energy By Design

**Petra Solar Triumphs with Stellar Innovation.**  
**Solar Power is as near as your Closest Utility Pole!**

The New Jersey Board of Public Utilities and *New Jersey's Clean Energy Program™* recognize Petra Solar – winner of the 2009 Clean Energy Market Innovator of the Year.

Petra Solar has created an inventive new way to quickly and easily deliver solar energy to the power grid through a unique 200 watt photovoltaic pole-mounted system, funded in part by New Jersey's Clean Energy Program. Already, PSE&G has partnered with the company to install 200,000 units on existing utility poles to generate 40 megawatts of electricity for New Jersey's largest power grid, eradicating over 200 million pounds of carbon dioxide each year and creating over 100 new jobs in New Jersey.

Find out how your municipality or business can benefit from clean energy financing and incentive programs available through New Jersey's Clean Energy Program at [NJCleanEnergy.com](http://NJCleanEnergy.com).



**JOE FASANO**  
**732.752.3555**  
**FREE ESTIMATES**  
**HEATING & COOLING**  
*We've got a special attraction for you...*  
Ruud Super High Efficiency Air Conditioners and Furnaces - Paired Up For Peak Performance!

**KEEP COOL... THERE'S STILL TIME.**

**The Big Issue**

Reach every household and business in South Plainfield in the March 26 issue of the *Observer*.

Don't let this big issue waddle away!

**South Plainfield Observer**  
Your #1 Source for South Plainfield news.

To reserve your space, call (908) 668-0010.  
Reserve space by March 5.

But don't wait too long... because this opportunity will waddle away.



PUBLIC NOTICE

TAX SALE NOTICE

NOTICE OF SALE OF PROPERTY FOR NONPAYMENT OF TAXES,  
ASSESSMENTS AND/OR OTHER MUNICIPAL LIENS

Public notice is hereby given that I, Kimberly Clifford, Collector of Taxes of the Borough of South Plainfield, in the County of Middlesex, will sell at public auction on, **Thursday, February 25, 2010** at the South Plainfield Municipal Complex, Council Chambers, 2490 Plainfield Avenue, South Plainfield, New Jersey, at 10:00 am or at such later time and place to which said sale may then be adjourned, all of the several lots and parcels of land assessed to the respective persons whose names are set opposite each respective parcel as the owner thereof for the total amount of municipal liens chargeable against said lands respectively, in accordance with N.J.S.A. 54:5-1, et seq. as computed to the 25th day of February 2010.

Take further notice that the hereinafter described lands will be sold for the amount of the municipal liens chargeable against each parcel of said land assessed as one parcel, together with interest and costs to the date of sale. Said lands will be sold at the lowest rate of interest bid, not to exceed 18%. Payment for said parcels shall be made prior to the conclusion of the sale in the form of cash, certified check or money order, or parcels will be resold. Separate checks are required for payment of property taxes and for sewer fees and partial payments will not be sufficient to remove these items from the sale. Properties for which there are no purchasers shall be struck off and sold to the Borough of South Plainfield at an interest rate of 18%.

At any time, before the day of the sale, I will accept payment of the amount due on any property with interest and costs. Payments must be in the form of cash, certified check or money order. Industrial Properties may be subject to the Spill Compensation and Control Act (N.J.S.A. 58:10-23.11 et seq.), the Water Pollution Control Act (N.J.S.A. 58:10A-1 et seq.), and the Industrial Site Recovery Act (N.J.S.A. 13:1k-6 et seq.). In addition, the municipality is precluded from issuing a tax sale certificate to any prospective purchaser who is or may be in any way connected to the prior owner or operator of the site. The lands to be sold are described in accordance with the last tax duplicate as follows:

TAX SALE LIST

BLOCK	LOT/QUAL	OWNER NAME	AMOUNT	BLOCK	LOT/QUAL	OWNER NAME	AMOUNT	BLOCK	LOT/QUAL	OWNER NAME	AMOUNT
2	8	CARELL, GLADYS C/O C. CARELL	\$146.42	136	24	DIAZ, FAUSTO B & DELSALTO, MAURA L	\$214.46	293	3	SIKANOWICZ, EUGENE	\$1,084.64
2	10	HINDS, DERRICK & MARCIA MARSH-	\$214.46	137	7.02	GUZMAN, LUIS ARMANDO	\$1,688.31	298	1	JA & JM ASSOC., L.L.C.	\$11,154.31
3	17	SANTOS, FRANCISCO A	\$214.46	138	2	TOCA, FREDDY R. & NIEVES, LOURDES	\$214.46	302	1 C0005	LEO, ROBERT & ELIZABETH	\$987.09
6	13	CORDONA, JAIME & MARTHA	\$214.46	139	11	MILLER, ELIZABETH	\$214.46	304	5.01	A.STANLEY MUNDY AND COMPANY	\$2,211.23
7	13	LESO, WILLIAM R.	\$214.46	139	13	US BK NATIONAL ASSOCIATION-TRUSTEE	\$214.46	305	3	HARRIS, N.&L.C/O IDA HARRIS	\$214.46
7	14.04	BOURNE, MERVIN & CARLA	\$214.46	139	19	ROSADO, WILFREDO	\$214.46	306	2	COLVIN, HELEN	\$4,040.80
7	16.02	STANLEY, JIMMY & CAROLYN	\$214.46	146	4	DRESS, DONALD M. & KULA, LISA A.	\$214.46	306	3	COLVIN, HELEN	\$190.38
7	18	ALBERTOCKI, M.C. & SULINSKI, G.T.	\$2,378.70	147	13.01	ZRINKO, FRANK J. & SUSAN E	\$214.46	306	4	COLVIN, HELEN	\$441.15
7	34	FONTANA, GREGORY & YVONNE	\$2,322.25	148	3	ALMEIDA, MARIA T	\$214.46	307	1	COLVIN, HELEN	\$378.45
7	65	MILLER, WILLIAM D(V) & DORIS	\$214.46	148	12	DEUTSCHE BANK NAT'L TRUST COMPANY	\$214.46	307	2	COLVIN, HELEN	\$895.38
7	66	PEDERSEN, ALVIN C & SHIRLEY A.	\$3,194.84	148	21	MCCANN, RANDALL & CAROLYN	\$214.46	308	6	DENNIS, KRISTINE	\$214.46
8	5	MALLQUI, MIGUEL A	\$363.93	151	12	SMITH, GARY & LISA	\$214.46	308	10	DIPPOLD, CORY	\$214.46
9	5	PAIGE, WILLIAM & ROSITA	\$214.46	152	11	PALMA, MARCELO	\$108.04	308	44	GREEN, JR, EUGENE & MIHALIK, SUSANNE	\$363.93
9	7	STAYNINGS, ANTHONY & MARY	\$214.46	152	50	KONE, LACINA & CISSE, AWA	\$214.46	308	49 C0001	CHIN, THOMAS W B	\$214.46
10	4	TAYLOR, BETTY M.	\$214.46	152	99	WROTHNY, JASON	\$214.46	308	51 C0001	SMITH, CHRISTOPHER & CRAIG, MECHELE	\$214.46
12	29	ROESCH, RANAE & JOHN R	\$1,408.29	152	110	LORETTA CONROY FAMILY TRUST	\$3,221.28	311	50	BARRERA, RICARDO & JULIO & GEORGINA	\$214.46
12	35	TRUONG, MYHANH	\$214.46	152	112	EJIOCHI, GABRIEL E. & MARY ROSE	\$214.46	311	51	BRELAND, STEPHEN & ALLISON N.	\$214.46
12	45	OGBEVOEN, NUGGET & SUNDAY	\$214.46	152	131	SIKANOWICZ, EUGENE M & KAY E	\$2,164.94	312	3	CARNEY, PATRICIA A	\$214.46
14	19	ZITSCH, ROBERT W. & COLLEEN V.	\$1,107.67	154	1	GIANNAKIS, ERNIE J. & LINDA J.	\$214.46	313	3	RINGEL, RANDOLPH B. & AMANDA	\$3,199.22
14	27	BLACKMON, LYNDA	\$1,170.34	157	29	O'SHAUGHNESSY, P.&ZALUSKA, L.	\$214.46	313	18	RICHARD, ADRIAN D & DEBRA R	\$214.46
14	39	IACULLO, LUCILLE	\$282.67	159	17	CONNOLLY, MARTIN & DOROTHY	\$214.46	313	20	GEORGE, GARY & FRANCES	\$214.46
15	24	GUARRACI, RICHARD D. & HELEN R.	\$214.46	159	23	DENTE, RALPH & ANTOINETTA	\$214.46	314	4	TITTLE, SCOTT	\$214.46
15	26	MONROE, MICHAEL J. & JOAN M.	\$2,605.18	160	3	COLAPIETRO, JAMES & TRACY	\$214.46	315	11	DUNGEE, DOROTHY	\$363.93
16	30	ANGUIANO, NOHRA M	\$214.46	160	19	OGRODNIK, CHRISTINE M & THAPA, SANDEEP	\$214.46	315	31	SIMKO, GEORGE & JUDY	\$110.14
17	10	CIFUENTES, JUAN C & RAMOS, ANGELA	\$1,313.57	164	21	TAJUR, FRANKLIN & MARY C	\$214.46	315	33	SIMKO, GEORGE AND JUDY	\$111.40
20	7	TAKOUKA, TAG O.	\$214.46	166	6	COPPOLA, JOHN J	\$214.46	315	53	DREWERY, JEROME & ADRIENNE	\$214.46
21	2.06	WILSON, RICHARD D & MAUREEN B	\$214.46	167	11	MAINO, KENNETH A. & LAURA F.	\$214.46	318	13	RICE, DONTÉ & TAMARA	\$214.46
24	7	HUNTER, DAVID M. & TERESA A.	\$214.46	169	7	VASQUEZ RAMOS, NANCY	\$214.46	319	1	LEIGHTON, ROBERTA D.	\$4,178.32
25	19	BENKO, SCOTT C. & ARACELIS	\$214.46	169	18	RYAN, DIANE & ROBERT	\$1,377.77	319	11.02	CISSON, GREGORY J.	\$214.46
25	20	SANCHEZ, DAVID	\$214.46	169	20	ANTOCICCO, RAYMOND & ELAINE	\$214.46	322	2.01	NATT, SHELAA & FREEMAN, VELMON	\$214.46
26	12	MEZA, ADEL G & REESE, RUSSELL & ADA	\$214.46	170	37.01	SPEARS, GEORGE & ANDREA	\$3,261.67	324	3	BENSON, HAROLD & ALETA	\$2,480.64
29	1	CALLES, CARLOS	\$214.46	170	40	PNC BANK NATIONAL ASSOCIATION	\$214.46	327	5	BALKARAN, RAMGOOLAM & CHANDRAWATI	\$214.46
29	4	MILLER, DAVID & STARR-MILLER, TIFFANY	\$214.46	172	22	RIDDICK, LINWOOD & MILAGROS	\$214.46	337	13	RUIZ, JULIO C. & IRIS	\$363.93
32	1	SELLA, MICHAEL G. & KELLY A.	\$214.46	174	10	DOUGLAS, LOCKSLEY	\$161.39	338	13	CABRERA, KARINA & RAMOS, SANDRA	\$214.46
32	6	GONCALVES, LESLIE A	\$214.46	174	22	424 SAMPTON AVE LLC	\$1,119.44	343	8	DAZOS, DEAN J	\$214.46
33	2	BARNEY, ELAINE C	\$214.46	177	5	AMAYA, JOSE ADAN	\$214.46	346	11	TRAN, LE & THANH M	\$1,605.38
34	18	PAYNE, TREVOR D & JOANNE L	\$214.46	180	9	KELLERMAN, CHRISTINE (PALECKI)	\$214.46	353	3.06	FASANO, LOUIS	\$569.98
37	7	PELLEGRINO, JAMES J. & AGATHA	\$1,447.86	182	8	CALLEJAS, ANGEL & CRUZ, MYRNA G	\$214.46	366	2.04	PATEL, KALPESH M. & ROSHNI K.	\$214.46
37	9	DI PASQUALE, PHYLLIS	\$214.46	186	4.02	PAULS, SAMUEL J	\$214.46	390	2	ERRICKSON, FRED & CAROL	\$288.57
41	13	SUTTON, JEFFREY S. & SUSAN M.	\$214.46	187	4	SOUTH PLAINFIELD REALTY LLC	\$170.61	398	2.06	LAPITAN, ROSELLER & CLEOPATRA	\$2,087.30
46	9	LONDINO, EDWARD	\$214.46	188	27.01	LEONARD, WALTER C. & GARTHA M.	\$2,411.88	400	3	CONTRERAS, JORGE M	\$214.46
46	26	KOZAK, JOHN & KAREN	\$1,288.09	188	63	HARRY-SCOTT, VICKY & SCOTT, DAVID	\$214.46	403	1	NHAN, TAI & TRAN, KIM ANH	\$214.46
53	2.02	RODRIGUEZ, MICHAEL A. & KIM D.	\$214.46	189	4	HOFFLER, TANYA	\$214.46	404	5.03	GRAYWILLIS A. & LEIGHSA M. PATE-	\$136.68
56	13	SANCHEZ, RENE G & VIVIANA	\$214.46	193	4	PENDER, DOMINIQUE, SR. & DIANE M.	\$214.46	404.02.1.03		CAPA, WILLIAM & EDGAR	\$3,493.75
56	14	BLASEN, YOLANDA	\$2,917.20	193	19	WATKINS, GEORGE L. & JANICE A	\$159.35	404.02.27		KERTES, FRANK M. & L.	\$4,136.25
56	24	RACITI, FRANK & DARLYNE	\$377.77	194	9	SUMMERS, LARRY & ANN	\$214.46	405	10 C0002	SIKANOWICZ, EUGENE & KAY E.	\$1,433.80
57	10.01	BOSSE, RONALD & LANZA CYNTHIA	\$214.46	195	26	HEILMAN, JAMES L. & BARBARA A.	\$214.46	406.02.31		CARDEN, WANDA	\$214.46
57	22	LAFFERRA, EDWARD	\$214.46	196	8	KELLY, PETER & JENNIFER	\$214.46	406.03.2		GARCIA, LIGIA	\$214.46
60	12	SMITH, THOMAS & IRAIDA	\$214.46	198	20	FISHER, KENNETH R. & CATHY E	\$1,642.99	406.03.5.01		SIKANOWICZ, EUGENE M.	\$288.21
61	33	RUSSELL, JAMES & DONNA	\$214.46	199	29	BUSH, JOHN (V)	\$214.46	406.03.18		WEEKS, TRENNEL	\$214.46
64	6	PENDER, NANCY	\$214.46	200	8	GONZALEZ, FRANK & MARIA	\$214.46	407	25	RUIZ, CARLOS & OFELIA	\$214.46
65	8	KRAUS, ROBERT H & SEFEROGLU, HIVRON	\$4,516.10	200	17	LEON, CARLOS T. & CECILIA	\$214.46	409	4	ANTAR REALTY LLC	\$6,565.35
65	11	DABNEY, WILLIAM & HUGHES-DABNEY, JANINE	\$402.54	201	3	TANZOLA, JOHN & KATHERINE M	\$5,345.32	414	11	LEONARD, WALTER E. & WENDY	\$214.46
68	4	STOLARZ, ANNE B	\$2,328.76	201	14.01	MARRERO, JUAN C. & LIAN	\$1,901.39	418	15	ARBOLEDA, OSCAR	\$2,787.22
71	2	BARNES, DAVID N. & LILLIAN M	\$111.21	214	13	DAUGENTI, FRANCIS & PATRICIA	\$2,911.91	420	3	HILL, EVELYN	\$214.46
74	8	PATTERSON-JOHNSON, LINDA	\$214.46	221	12	SCHUCH, GARY	\$214.46	425	5	F & M DECORATORS, INC. A NJ CORP.	\$1,700.38
74	23	ROGERS, PETER & BERTHA	\$2,465.04	222	30	DISCH, BRYAN & MAUREEN	\$1,508.17	427	17	IROTH, JOE J. & KOJONGIAN, GEERTJE C.	\$1,377.65
74	26	ROTH, SUSAN L	\$1,689.13	228	2	SANKO, R JR & MOTTOLA, C	\$214.46	427	21 C0001	KOURIL, ELEANORE E	\$214.46
75	7	CECCHETTINI, GINA M.	\$214.46	228	21	KNIGHT, EVELYN	\$214.46	427.01	1.07 C0003	MCGUINNESS, LAWRENCE E & ANNEMARIE	\$214.46
77	4.01	WILLIAMS, KENNETH L. & ANDERSON, K	\$214.46	229	10	CABRERA, JOSE	\$214.46	428	7.01	ACUNA, E & I & DECADEZ, J	\$2,359.21
77	5.01	MITLO, SR, SHAWN	\$214.46	229	21	SIMPSON, RONALD & ANGELA	\$3,563.82	429	1	WEBER, MARION B	\$298.42
77	6	KARELEFSKY-BARCA, CELIA & BARCA, JOHN	\$214.46	229	46	ALSTON, GREGORY & BRENDA	\$2,034.33	437	7.01	KUKAN, LAWRENCE S. & DAWN	\$311.62
77	32.01	CARSON, STEVEN	\$214.46	233	11	HOH, ANTONIA J.	\$1,936.42	438	3	SORIANO, NELSON A. & ANA F.	\$214.46
79	3	WATSON, JUNE GREEN	\$2,695.08	233	24	O'DONNELL, JOHN	\$363.93	447	5	ADA REALTY	\$5,092.98
81	14	DORNEY, DANIEL & ALYSSA	\$214.46	234	29	MILLER, HERBERT W. & HELBERG, DORCAS	\$214.46	457	1.01	AAA STORAGE DEPOT LLC	\$20,948.00
82	4	MC CAULEY, BARBARA	\$1,415.13	238	11	GASTER, JOHN & LEONE W	\$3,463.62	467.01.30		METZ METALLURGICAL CORP.	\$195.25
82	19	COCHRANE, BRIAN & LAURIAN	\$214.46	238	24	STAFFIN, ARTHUR S. & JOYCE	\$214.46	477	15.02	HELEN STREET ASSOCIATES, LLC.	\$18,086.59
83	3	BARGE, JAIME & NICOLE	\$214.46	242	12	VELASQUEZ, WENDY	\$214.46	496	8	EDWARDS, BRIAN T. & LESKO, KATHLEEN D	\$214.46
87	5	ALBA, DARIN & ROBIN	\$2,713.59	244	14	LOIACONO, CHARLES & SUSAN	\$214.46	526	26	SALAMANCA, ALFONSO & LUIS & MIGUEL	\$4,965.35
87	9	MULHEARN, SANDRA J	\$214.46	246	16	RIVERA, JR, GILBERTO & RIVERA, VANESSA	\$214.46	528	43 C0123	WILLIAMS, DAVID L	\$214.46
91	4	WILLIAMS, TIMOTHY & NORMAN, PANDORA	\$214.46	249	18	LAKE, WILLIAM & STACEY	\$214.46	528	43 C0427	PHILLIPS, LANDRA & MILLIGAN, DARREN	\$214.46
91	44	BILAK, LISA	\$214.46	254	3	KRIYA REALTY CORP (ATTN: PATEL)	\$6,186.69	528	43 C0428	CHITTURI, ANIL & MINATI	\$214.46
94	6	HAWKINS, VONETTA & ALICIA	\$193.47	254.03.3		CAINES, RAYNARD & BETTY	\$3,989.13	528	43 C0524	GASPER, JR, DANIEL	\$214.46
109	21	BROWN, RUSSELL A. & CHRISTINE M.	\$1,440.93	254.04.8		MENSAH, JOSEPH & DORCAS	\$1,743.19	528	43 C0631	WINDSOR FUNDING CORP & BELL, ERIC D	\$214.46
114	2	MURPHY, COLEEN	\$214.46	254.05.6		DEGROOT, MICHAEL & YVONNE	\$1,820.48	528	43 C0712	TAMILARASAN, A S & VISWANATHAN, P	\$214.46
118	1	MADINAH, ALONZO & QAYYIMAH	\$2,531.15	258	6.01	OMONIA HOLDING CO., INC.	\$1,966.19	528	43 C0731	FADAYOMI, BORJOI	\$214.46
120	9	HOOKS, TANYA	\$214.46	258	11	STELLAKIS JOHN & GANIARIS PETER	\$10,638.01	528	43 C0821	GASPARD, DANIEL & MANUEL	\$214.46
121	2	FONTI, RICHARD C.	\$214.46	259	8	BUY-RITE AUTO STORES, INC	\$6,550.32	528	43 C0826	GOLDBERG, JACOB & HEIDI	\$214.46
121	13	ROMEO, ELEANOR & LORENZO	\$2,841.42	264	21	ASCENCIO, CHRIS J. & ROSA & HERNANDEZ, L.	\$2,626.77	528	43 C0925	PATEL, SONAL & KETAN	\$2,703.02
122	79	NGUYEN, VINSON VIET	\$214.46	269	10	KONYA, CHERYL & RON R.	\$214.46	528	43 C1122		



# Sports

By Gary Lampasona

## JUNIOR BASEBALL CLUB NOTES

Believe! Believe! Here's dreaming about warm, sunny, spring days...

All managers for the spring season have been notified and preparation begins with the managers' meetings. Make sure you mark the week of February 22 on your calendar: Small Fry C on Monday, Feb. 22; Small Fry B on Tuesday, Feb. 23 and Small Fry A on Wednesday, Feb. 24, all at 7:30 p.m. in the SPJBC clubhouse.

For those disappointed candidates who were not selected, be sure to express your desire to be a part of baseball education to your son's manager. Managers, be advised that all managers and coaches must have a 2010 SPJBC Membership Card and be Rutgers certified.

Player Evaluations will be held for all SFC and SFB players at the PAL building on Saturday, March 6, beginning at 8:30 a.m. Postcards will be mailed with your child's specific time to report. Attendance is important because these evaluations allow managers and coaches to select competitive teams, which leads to more fun for all players and parents. The Women's Auxiliary will be on hand to support the club. A continental breakfast and SPJBC clothing will

be available for purchase.

**Rutgers Certification Class**—one class, one night, three hours. If you are interested in participating on the field with your child's team, a SPJBC Membership Card and Rutgers certification are a must. The only class is Thursday, March 18 in the SPJBC clubhouse beginning at 6:30 p.m. The fee will be waived for South Plainfield residents.

**Volunteers Still Needed**—We are looking for committee chairpersons and directors. Openings include C League Director, snack stand captains and tournament directors. Remember our organization runs on people volunteering their time. Come on out, give us a hand and get involved. It cannot happen without you. If you are interested, please call the clubhouse and leave a message.

**Opening Day**—The countdown begins. Saturday, April 10 is only seven weeks away. You can find all this and more information on our Web site, [www.leaguelineup.com/spjbc](http://www.leaguelineup.com/spjbc).

*"That's baseball, and it's my game. I know, you take your worries to the game, and you leave 'em there."*

—Humphrey Bogart

## JUNIOR JOURNALIST



Junior Journalist winner Daria Turner with Principal Robert Diehl.

## Daria Turner Named Junior Journalist

Roosevelt School fourth grader Daria Turner has been named a winner in the Junior Journalist contest. Her poem, "Wish It Was Spring," has earned her dinner for her family courtesy of Hometown Heros.

Students should submit their original written works to their teachers, school principal or the Observer office at 1110 Hamilton Blvd.

Winners will receive a catered dinner for their families from Hometown Heros and will be honored at a year-end banquet in May. Junior Journalists also have the opportunity to win the Ruth Kurland Memorial \$1,000 savings bond which will be awarded at the banquet.

For more information, call the Observer at (908) 668-0010.

## Wish It Was Spring

By Daria Turner

Only if it were spring.  
Only if the melted ice would  
glisten like a thousand stars.  
If the cold air would turn warmer  
than a summer's day.  
If shoveling the driveway would  
be playing tag.  
Only if the recess would be recess.  
If the sun would come out  
again to shine forever.  
Wish it was spring.  
Wish the winter recess would  
be spring.  
Wish the warm days were here again.  
Wish it was spring.

## WHAT'S GOING ON IN MY TOWN

FROM A BUSY BUSY MOM *jd*

• Thank you to the South Plainfield Middle School principal, assistant principal, teachers and staff for sponsoring the "Battle of the Teams," which the students overwhelmingly enjoyed. Thank you to the Middle School PTO, along with the following parents, for your support: Suzanne Butrico, Jen Falcone and Marie Butrico for judging the Battle of the Teams; and to Christine Faustine, Diane Erdhardt, Lynn Lapolla, Lisa Abate and Kenya Ali for serving refreshments.

• Thank you to Mr. and Mrs. Falcone for chaperoning the dance on February 12, Jane Dornick for arranging the chaperones and Chris Sanko for helping set up in June for the dinner/dance.

• Middle School and Grant Elementary parent/teacher conferences will take place on Wednesday and Thursday, Feb. 24 and 25, respectively. Both schools will have early dismissal.

• Congratulations to South Plainfield High School Swim Team coaches. Emily Pierkarski placed second in the county in the GMCs and won silver in the 500M freestyle. Camilo Patino placed first in the county by winning the gold in the 100M butterfly and silver in the 50M freestyle. Thank you to Ed and Mary Pierkarski for purchas-

ing and delivering the balloons and flowers for "Senior Day" during the home meet at the Jewish Community Center on February 12. South Plainfield won the meet against Oratory Prep.

Congratulations to the SPHS Wrestling Team and coaches for winning the Group III State Championship on February 14.

• On Saturday, March 13 a clothing drive will take place to benefit the SPHS Baseball Team dinner. A Roma Foods truck will be located in the entrance of the middle school parking lot from 8 a.m. to 4 p.m. Please place bagged, tied clothing, shoes, hats, belts, pocket books, toys and bedding in the truck. The baseball dinner is scheduled for Thursday, June 17.

• The SPHS third annual year end dinner will take place on Monday, March 1 at 6 p.m. at Flanagan's Restaurant at a cost of \$30 per person. There is no charge for graduating seniors. For more information, contact Debbie Boyle at (908) 803-1573.

The SPHS annual competition cheerleading team dinner will take place on Thursday, March 4 at Flanagan's Restaurant at 6 p.m. For more information, E-mail Shannon Colucci at [samc1315@verizon.net](mailto:samc1315@verizon.net).

## SOCCER CLUB NEWS

By Dawn Hutchison

## Please Support Our Fundraising Efforts

The SPSC spring season begins in just a few short weeks. All of our 13 teams are preparing to take to the fields on opening weekend currently scheduled for Sunday, March 14.

The preseason canning drive weekend is Saturday and Sunday, March 6 and 7. Coaches will be provided with team assignments and the dates and times will be communicated to the families shortly. Please be sure to support our players as they are out and about the town collecting. This is a big fundraiser for us and helps to support the costs of field maintenance, league fees and operating costs of the club. We appreciate everyone's support!

Our general meeting is scheduled for Thursday, Feb. 25 at 7:30 p.m., downstairs at the VFW located on Front Street. Our meetings are open to all parents in the club and we look forward to your involvement and help in supporting the club in all its many efforts. Fresh ideas are always welcome and we are always looking for help. Come on out to our meeting and meet the coaches and board members. We are available to answer any of your questions.

We are also very fortunate to be able to host the SAGE meeting for our area this year. The meeting will be held in the SPHS cafeteria on Tuesday, March 16 at 7:30 p.m. SAGE (Set A Good Example) outlines the expectations of coaches, families and fans in general to make the game an enjoyable, safe and respectable experience for all involved. As all coaches are required to attend this meeting once per season, we also encourage parents to attend. It is a very informative and enlightening program; please consider coming out and taking part. The event is free to all. This is a great meeting for all parents, coaches and assistant coaches to attend. Regardless of what sports you enjoy, this is a great

reminder for parents and fans to reinforce that the kids come first!

Thank you to all who came out and supported our Mardi Gras fundraiser this past Friday night. What a blast we had! Great Cajun food, drinks, music and fun set the mood for this first time event. Marshall's Dixieland Band played through the night and got many on their feet, leading parades through the room. Beads, masks, raffles, and a 50/50 all added to the nights festivities. Our thanks go out to all who helped, contributed and supported this wonderful event. Since there are many to thank, see next week's article acknowledging all those who made it possible.

Hope to see everyone at the meeting and very soon out on the fields.

## YMCA Offering CPR Course

The Metuchen Branch YMCA is offering an adult/pediatric CPR class on Monday, Feb. 22 from 9:30 a.m. to 12:30 p.m.

The fee of \$23 per person includes course manual and certification.

Register at the front desk or online at [www.metuchenedisonymca.org/metuchen](http://www.metuchenedisonymca.org/metuchen).

For more information, call Jean at (732) 548-2044.

## HOMETOWN HEROS

"Quality Food For Everyday Heroes"

## SEND-A-PLATTER

We will send to any home a beautifully arranged and wrapped assorted sandwich tray with two of our homemade salads...Any Day-Any Time.

Communion Catering packages starting at \$5 per person.

\$49.95

SUBS • SANDWICHES • WRAPS • HOMEMADE SALADS...

...ALWAYS FRESH!!

HOMETOWN HEROS

340 Hamilton Blvd. (By the DARE Bldg.)

(908) 755-HERO (4376)

Check out our menu at [www.hometownherosdell.com](http://www.hometownherosdell.com)

1<sup>st</sup> IN QUALITY  
1<sup>st</sup> IN SERVICE  
1<sup>st</sup> IN PRICE

## FRONT STREET FARMERS MARKET

## Don't forget our freshly baked bakery items!

Snow White Cauliflower	Bananas	Grape Tomatoes	Vine Tomatoes	Fresh daily! Mozzarella	Every Tuesday 10% Senior Citizen Discount!
99¢ <sup>hd.</sup>	49¢ <sup>lb.</sup>	2 pints \$3.00	99¢ <sup>lb.</sup>	\$5.99 <sup>lb.</sup>	
Boar's Head Combo 2/3 lb. Delux Ham	Boar's Head Domestic Provolone	Boar's Head Ever-Roast Chicken	5 lb. bag All-purpose Potatoes	Red Leaf Lettuce 2 heads	Iceberg or Romaine Lettuce
\$5.99 <sup>lb.</sup>	\$3.99 <sup>lb.</sup>	\$5.99 <sup>lb.</sup>	99¢	\$1.00	79¢ <sup>hd.</sup>

Please patronize our advertisers.





Special education teacher Stephanie Kaneda receives a tenure certificate from Ellen Decker-Lorys, Franklin School principal, at the January BOE meeting.

## In My Opinion

Opinions expressed in this column are not necessarily those of the publisher, nor do we guarantee accuracy.

(Continued from page 2)

entry points were on borough property and was, according to Rob Russo, the borough engineer for 2009, strictly illegal. These altered entry points for 30 years had flown on a regular basis from the culvert itself, in the opposite direction intended, onto the adjacent resident's property causing flash flooding of these locations. There have been at least 100 serious flooding events as described by the reverse flow from the buried culvert from these entry points in the past 30 years.

There have been improvements in the undesirable flow from the buried stream culvert into the yards over the past year. This flash flooding issue was dramatically improved when the six major dams of the stream on the former Gallini Farm in Piscataway were removed by volunteers and with the assistance of the Middlesex County Mosquito Commission initiated by John

Kranz in 2008-2009. Despite the improvements, the flash flooding in our neighborhood continues with serious settling of our neighborhood properties, in some cases quite a distance from the buried culvert. One such sink hole is the Riley property at 1228 McDonough Street.

We are encouraged that Council President Matthew Anesh has supported Borough Engineer Len Miller of T&M Associates in looking into these issues. We look forward to the analysis of the origin of the water-logging and a plan formulated for a resolution regardless of the current strained economic climate.

As Artie Luber stated, "Is it going to take the collapse of the foundation of one of our homes before this is given the attention it deserves?"

REGARDS, LARRY MURRELL,  
RICH MCCRISKIN, CEDRIC  
JOHNSON, SONIA JOHNSON  
AND HERMAN MAURER

## Curves Hosts Food Drive to Benefit Local Families

Curves of South Plainfield is encouraging women in the area to show their philanthropic strength by participating in the annual Curves Food Drive. And, even though donating food to families in need is its own reward, the club is offering compelling incentives for both existing and potential members who participate.

From March 1 to 31, Curves will collect non-perishable items and monetary donations for food banks in the local area. The goal, according to Elissa Bennett of Curves, is for the community to come together to help families in need. "At the core of our business is the message that women are stronger when they rally together, and that is the point we hope to bring home with

our food drive," said Bennett. "We want to show our community just how powerful the generosity of our members can be."

According to Bennett, members who donate a bag of groceries or make a minimum donation of \$30 during the month of March will receive a reusable Curves grocery freezer bag for free. Non-members who do likewise between March 8 and 20 can join Curves for free. Curves will waive the cost to join.

Bennett says that as part of this effort, Curves will be participating in a company-wide contest for the most food drive donations collected by Curves locations across the nation. Winners will receive one of

several cash prizes to be donated to their local food bank. Each year, Curves locations collectively donate millions of pounds of food to feed the hungry.

"We hope women in the South Plainfield area will come together and participate in this initiative," added Bennett. "Even if you're not thinking about joining a gym, you can still drop off your donations. There are so many families—right here in our own community—who need our help."

For more information about Curves of South Plainfield and the Curves Food Drive, contact Elissa Bennett at (908) 757-4422 or E-mail 9ZM8S6@curvesmail.com.

## JESCO Acquires Nortrax's Beacon, NY Facility

JESCO, one of New Jersey's leading construction equipment dealerships, have expanded their territory coverage by acquiring Nortrax's Beacon, N.Y. facility. They have also become the exclusive John Deere and Hitachi Construction equipment dealer on Long Island and in the five boroughs of New York.

"This is a natural area of growth for JESCO. We are excited about expand-

ing into New York and the opportunities that come with this acquisition," states Jon Robustelli, president of JESCO. "Our goal is to enhance existing customer relationships and build new ones by providing the same quality services that we've offered at our three New Jersey locations for more than 37 years."

JESCO retained a number of key Nortrax employees who will continue

working at the Beacon location, providing service to the Hudson Valley territory, which includes Rockland, Orange, Dutchess, Putnam, Ulster, Sullivan and Westchester Counties.

For over 37 years, JESCO has been supplying municipalities and contractors throughout New Jersey and the New York metro area with a wide range of quality construction equipment including John Deere, Hitachi, BOMAG, Hypac, Indeco, Genesis, Hydrema and most recently, Cleaire. JESCO has three New Jersey branch offices conveniently located in South Plainfield, Fairfield and Lumberton as well as their new location in Beacon. With one of the broadest equipment offerings and largest rental fleets in the area, a massive parts inventory and a full fleet of service vehicles, JESCO ensures that they are always available to meet the changing needs of their customer base.

For more information on JESCO, log onto [www.jesco.us](http://www.jesco.us) or call 1-800-241-7070.



## BUSINESS/PROFESSIONAL/SERVICES

### AUTO BODY

**R&C AUTO BODY**  
Family Owned & Operated Since 1962  
Expert Color Matching  
24 Hour Towing  
Lifetime Repair Warranty  
Lic. No. 00992A  
**908-757-1933**  
3330 Park Ave., South Plainfield

**J&L auto body**  
Since 1972  
Approved Auto Repair  
**908-561-3354**  
149 Durham Ave. South Plainfield • Visit us at [www.jlautocenter.com](http://www.jlautocenter.com)  
Bring your car in for repairs and Receive **5% OFF** Auto Body or Mechanical Repair.  
Including insurance estimates. With this ad. Expires 3/19/10.

### BUSINESS SERVICES

**PADGETT THE SMALL BIZ PROS**  
PADGETT BUSINESS SERVICES™  
WHERE YOUR SUCCESS TAKES ROOT™  
Accounting Today 2009 Top 100 Firm  
Business and Personal Taxes  
Payroll • Financial Reporting  
Don Duffy, MBA – Owner  
South Plainfield, NJ  
(908) 668-6906  
[d\\_duffy@smallbizpros.com](mailto:d_duffy@smallbizpros.com)  
Call for a **FREE** Consultation!

### COMPUTERS

Concerned About Computer Virus Protection? Home Security?  
For advice and installation, call Stan Wilkinson at **ST Computers**  
**908-769-0709**  
• New Computers/Upgrades  
• Hardware/Software Installations  
• In Home Service  
• Website Development  
Call: 732-423-3504  
Visit us at [www.stcomputers.org](http://www.stcomputers.org)

### ELECTRICAL CONTRACTOR

**On Time Electrical Contractor LLC**  
Residential • Industrial • Commercial  
No Job Too Small  
908-451-3313  
On Call 24hrs.  
Fully Insured & Bonded NJ  
BILL RITCHEY Lic #8854

### GENERAL CONTRACTOR

**BUILDER & GENERAL CONTRACTOR**  
NJ DCA Lic #019771  
Since 1981  
**Lordina Builders**  
908-753-3850  
ADDITIONS • KITCHENS  
BATHROOMS  
Office Renovations  
FREE ESTIMATES

### GUITAR LESSONS

**GUITAR LESSONS**  
Beginner to Advanced  
**908-822-9702**  
SOUTH PLAINFIELD  
All Styles  
Kenny Campbell  
[www.kennymusician.com](http://www.kennymusician.com)

### HEATING AND COOLING

**LOU FASANO**  
HEATING & COOLING, INC.  
24 HOUR EMERGENCY SERVICE  
(908) 755-9141  
Act Now!! Take advantage of **\$1,500** Federal Tax Credit on High Efficiency Equipment  
**TRANE**

### REAL ESTATE

**Prudential New Jersey Properties®**  
Rose Marie Pelton  
REALTOR-ASSOCIATE  
South Plainfield Resident  
For Over 39 Years  
908-753-4450 X121  
(732) 653-0322  
Fax 908-753-0136  
[RosePelton@att.net](mailto:RosePelton@att.net)  
Prudential NJ Properties®  
659 Mountain Boulevard, Watchung, NJ 07069

**RE/MAX Competitive Edge**  
John (JACK) Pedersen  
Broker Associate/Certified Distressed Property Expert  
32 South Plainfield Avenue  
South Plainfield, New Jersey 07080  
Office (908) 755-0200 x124, Cell (908) 922-2369  
[jackp1@remax.net](mailto:jackp1@remax.net), [www.jackpedersen.com](http://www.jackpedersen.com)  
If you think all agents are the same, You Don't Know Jack!  
Solving the foreclosure crisis one homeowner at a time.  
Each Office Independently Owned and Operated

**Century 21 Moretti Realty**  
Put your trust in a Realtor who can get the most money through knowledge & experience!  
Over 28 years experience in South Plainfield & vicinity  
Office: (908) 755-5051 Ext. 313  
(908) 753-1346 Evenings  
Email: [sherwoode@morettiirealty.com](mailto:sherwoode@morettiirealty.com)  
225 Maple Ave., South Plainfield

### REMODELING

Love Your Home  
**RONZO REMODELING**  
HOME IMPROVEMENTS  
Bathrooms • Kitchens • Ceramic Tile  
Windows • Doors • Decks  
Custom Installations Available  
Joe Ronzo Sr. Lic. 13VH00092100  
(908) 668-0662



# Classifieds

CLASSIFIED RATES  
\$15/three lines; \$1 for each add. line.  
Run 4 consecutive issues, get 10% discount.

**South Plainfield Observer**

Call 908-668-0010  
to place your ad or  
E-mail your ad to:  
spobserv@comcast.net

## LOCAL CLASSIFIED ADVERTISING

### AFFORDABLE APARTMENT AVAILABLE

The Borough of South Plainfield, Affordable Housing Department along with The Highlands at South Plainfield announces that they are accepting rental applications for a one bedroom-moderate income apartment. The Highlands is located on Cook Avenue just off exit 4 Route 287N. This Affordable Housing unit rents for \$1,191/mo. Water is included. Interested households will be required to submit an application, income documentation and pass a credit check in order to qualify. The maximum household incomes permitted are \$56,056 for one person or \$84,064 for a two person household. Once certified, households will be matched to a unit through a lottery system. All successful applicants will be required to agree to maintain the unit as the family's primary residence. Also, they must demonstrate the ability to pay a security deposit (up to 1 1/2 month's rent) and first month's rent. The borough requires a \$25 fee submitted with each application. The Highlands requires \$50 per applicant which covers the application fee and credit check. Applications are available at the South Plainfield Public Library, the South Plainfield Municipal Building and The Highlands of South Plainfield rental office. Additional applications can also be requested via mail by calling the Affordable Housing Department at (908) 753-3775.

### HELP WANTED-ELDERLY CARE PERSON

**EXPERIENCED PERSON WANTED TO** care for senior citizen two to three hours weekdays. Light housekeeping, supervise lunch, animal friendly person wanted, salary negotiable. Call (908) 226-1872.

### MOTORCYCLE FOR SALE

**1999, 1500 KAW VULCAN DRIFTER** -5,600 Orig. Miles, Like New. Many extras. \$9,500 or best offer. Call (908) 930-1806.

### LOST

**LOST: CELL PHONE IN ZIPLOCK BAG** in Franklin School area on Wednesday, Feb. 10. If found, please call (732) 841-2180.

### HOUSECLEANING

**TERRI'S CLEANING-\$10 A ROOM. REFERENCES AVAILABLE. CALL (732) 614-5296**

### LIMOUSINE



### Amanie Limousine Service

*Quality Service is Our Goal*

Low Rates • Airport • Special Events • Corporate

NJ-NY-PA-CT-MA-MD-DC-RI

**1-866-331-1440**

online reservations: [www.AmanieLimo.com](http://www.AmanieLimo.com)

### REAL ESTATE AUCTION

**Nominal Opening Bid Starts at \$25,000**

**1158 LORRAINE AVE, PLAINFIELD, NJ**

3BR 1.5BA 1,500sf +/-

Property sells: 10:00am Tue. Feb. 23 on site

Open to the Public

For open house information, please go to

[williamsauction.com](http://williamsauction.com) or 800-801-8003.

Many properties now available

for online bidding!

5% Buyer's Premium May Apply

Williams & Williams

NJ Peter Costanzo broker RE#8910502,

Peter Costanzo Auctioneers Inc broker

RE#8900421

**Got Stuff You Don't Need? Sell it!**

Advertise your garage sale for \$20

or place a "FOR SALE" ad.

Call 908-668-0010 for information.

**Deadline to place an ad is Monday, 5pm**

## ADOPTION

**ADOPT:** Childless loving woman (teacher) wishes to adopt a newborn. Financially secure home with close extended family. Legal/Confidential. Expenses paid. Please call Denise: 1-866-201-4602 Pin#0196

## ADULT COMMUNITIES/REAL ESTATE

Smithville, NJ - 55+ FOUR SEASONS - Large MULBURY Model, handicap accessible, 2 sunrooms, premium lot. Near AC and shore. Owner financing 3%. 609-748-2988, 609-335-5124.

## ANNOUNCEMENTS

**BUY NEW JERSEY FOR \$495!** Place your 25-word classified ad in over 125 NJ newspapers! Call Diane Trent at 609-406-0600 ext. 24, email [dtrrent@njpa.org](mailto:dtrrent@njpa.org) or visit [www.njpa.org](http://www.njpa.org). (Nation-wide placement available) Ask About our TRI-BUY package to reach NY, NJ and PA!

## AUTOS WANTED

Please **DONATE** your car. 1-800-692-1221 **CHILDRENS HOPE CHARITIES** Tax deductible-free pickup-any condition. Also receive gift certificate for each car donated. Help Us, Help Children.

**DONATE YOUR CAR, TRUCK OR BOAT TO HERITAGE FOR THE BLIND.** Free 3 Day Vacation, Tax Deductible, Free Towing, All Paperwork Taken Care Of. 1-877-873-1598

## BUSINESS OPPORTUNITIES

**ALL CASH VENDING!** Do you earn up to \$800/day? Your own local candy route. Includes 25 Machines and Candy. All for \$9,995. Call 1-800-460-4276.

## EDUCATION

**COLLEGEBOUND NETWORK:** Free Advice! We'll Help You Choose A Program Or Degree To Get Your Career & Life On Track. Call Collegebound Network! 1-877-872-0053

## FINANCIAL

**AMERICAN TAX RELIEF: SETTLE IRS BACK TAXES.** Do You Owe Over \$15,000? If So...Call us Now! \*\*\*\* FREE CONSULTATION\*\*\*\* For Less Than What You Owe! Stop Wage Garnishments! Remove Bank Levies, Tax Levies & Property Seizures! Stop Payment Plans That Get you Nowhere! Settle State and Business Payroll Tax Problems. Eliminate Penalties, Interest Charges & Tax Liens! SETTLE IRS BACK TAXES. NO OBLIGATION, CONFIDENTIAL. CALL AMERICAN TAX RELIEF 1-800-355-1716. FREE CONSULTATION

## FINANCIAL

**CREDIT CARD RELIEF\*\*\* FREE CONSULTATION** \*\*\* Save Thousands of Dollars. Out Of Debt In Months - NOT Years! Avoid Bankruptcy. NOT A High Priced Consolidation Company Or A Consumer Credit Counseling Program CALL CREDIT CARD RELIEF 866-479-5353 Not Available in All States

## HEALTH

**IF A LOVED ONE** underwent Hemodialysis and received Heparin between August 1, 2007 and April 1, 2008 and died after the use of Heparin, you may be entitled to compensation. Attorney Charles Johnson 1-800-535-5727.

## HELP WANTED

**AIRLINES ARE HIRING.** Train for high paying Aviation Maintenance Career. FAA approved program. Financial aid if qualified. Housing Available. Call Aviation Institute of Maintenance (888-349-5387)

Service Technician and Sales/Marketing professional. 2 POSITIONS AVAILABLE. Commercial kitchen/refrigeration repair company. Experience required. Competitive pay/benefits. Fax resume w/ salary history to 973-691-2070 or email [glennn@serviceplususa.com](mailto:glennn@serviceplususa.com)

## HELP WANTED

Over 18? Between High School and College? Travel and Have fun w/Young, Successful Business Group. No experience Necessary. 2 wks Paid Training. Lodging, Transportation Provided. 1-877-646-5050.

## HOME IMPROVEMENT

**HAS YOUR BUILDING SHIFTED OR SETTLED?** Contact Woodford Brothers Inc, for straightening, leveling, foundation and wood frame repairs at 1-800-OLD-BARN. [www.woodfordbro.com](http://www.woodfordbro.com), Nassau City License #H18G716000, Suffolk City License #41959-H, Not applicable in Queens county.

## HORSE & LIVESTOCK

**PA HORSE WORLD EXPO, FEB 25-28, Farm Show Complex, Harrisburg.** Hundreds of vendors, seminars, demonstrations. Theatre Equus - A Musical Equine Revue. Info: 301-916-0852 [www.horseworldexpo.com](http://www.horseworldexpo.com).

## LAND FOR SALE

**ATTENTION SPORTSMEN** New York State Land for Sale 14.8 acres w/ power & snowmobile trails - \$27,995. 4 acres w/ access to trails and power. NOW: 12,995! 24.5 acres w/ Sportsman's Cottage bordering trails \$79,995. Call Christmas & Associates 800-229-7843 [www.LandandCamps.com](http://www.LandandCamps.com)

## MISCELLANEOUS

**ATTEND COLLEGE ONLINE FROM HOME.** \*Medical, \*Business, \*Paralegal, \*Accounting, \*Criminal Justice, Job placement assistance. Computer available. Financial Aid if qualified. Call 888-220-5975 [www.CenturaOnline.com](http://www.CenturaOnline.com)

**NEED TO REACH THE PRESS?** Send us your press release and we'll do the rest! Fee. Call Diane Trent at 609-406-0600 ext. 24, email [dtrrent@njpa.org](mailto:dtrrent@njpa.org) or visit [www.njpa.org](http://www.njpa.org).

**CASH FOR GOLD.** Sell your Gold Jewelry. Request Your FREE Kit. Cash in 24 Hours. 1-877-739-0184

**FREE Identity Theft Protection!** (For 30 Days) LIFELOCK. Call Now! ADD 10% Off. Use Promo Code: FIVEFACTS Call 1-877-848-0785

## MISCELLANEOUS FOR SALE

**DISH \$19.99/Month.** Why Pay More? FREE Install w/DVR (Up to 4 Rooms.) FREE Movie Channels (3 Months.) AND A \$570 Sign-Up Bonus! 1-866-397-1394

## PUBLIC NOTICES

[www.njpublicnotices.com](http://www.njpublicnotices.com) - Subscribe to receive automatic notices: sheriff sales, foreclosures, RFP bids for schools, town meetings, variances, etc.

## VACATION

**Carolina Golf Getaway for Couples.** Enjoy 3 days/2 nights, unlimited golf & FREE breakfasts. Luxury accommodations. Only \$149. Call 866-334-3253, x2463 or [carolinagolfgetaway.com](http://carolinagolfgetaway.com)

## WATERFRONT PROPERTIES

**Coastal North Carolina** free list of land bargains, water access homesites from \$35,900 - direct access ICWW, Pamlico Sound, Atlantic Ocean. Financing available. 1-800-566-5263

## REAL ESTATE: OUT OF STATE

**ESTATE SAYS LIQUIDATE - UPSTATE NY!** 15 acres - \$34,900 Fields, woods, stone walls! Superb upstate NY setting! EZ drive NY City! Build, hunt, invest! Virtual tour: [www.newyorklandandlakes.com](http://www.newyorklandandlakes.com) Or call 888-549-1553 NOW!

**WEB SPECIAL Wow!**

**WEB SPECIAL:** Place a classified ad and we'll run your ad on our web site for just \$5 more.

## BUSINESS/PROFESSIONAL/SERVICES

### COINS-GOLD WANTED

**TOP PRICES PAID**

**WE BUY YOUR UNWANTED GOLD & GOLD JEWELRY**

We also buy all U.S. and Foreign Coinage/Paper Money, Precious Metal Bullion, Sterling Silver & Vintage Sportscards.

**Gregory S. Heim • 908-405-6408**

South Plainfield resident for eight years

**9 AM to 8 PM**

[www.gynandroidhead.com](http://www.gynandroidhead.com)

References available upon request

We will come to you & provide a free verbal appraisal. Call for details.

### CARPETING AND FLOORING

Carpet • Area Rugs • Tile • Hardwood • Laminate • Linoleum

**Commercial and Residential**

**Wall to Wall, Sam lays it All!**

**Sam the Carpet Man**

**MY WAY CARPET**

**1-877-GO-MYWAY**

1-877-466-9929

Fax: 908-756-4040 119 Hamilton Blvd. mywaycarpet.com

South Plainfield, NJ 07080 mywaycarpet@msn.com

Repairs • Restretching • Binding • Custom Tile • Sanding and Refinishing

### CONSTRUCTION

References Available

Fully Insured

N.J. License #13VH00353600

**HARTJE** Residential Contractor

**CONSTRUCTION COMPANY**

Additions • Bathrooms • Kitchens

• Decks • Windows • Siding

**908-754-8921**

### HOME IMPROVEMENT

**PROFESSIONAL CARPENTRY**

Free Estimates!

**ROOFING • SIDING**

**WINDOWS • DOORS** Most repairs

**PORCHES • DECKS**

**908-561-4073**

Resident Specialist - 30 Yrs. Experience - NJ Licensed Contractor

### JEWELERS

FINE JEWELRY • EXPERT REPAIRS

**CINDY MICHAELS**

Jewelers & Gemologists

2325 Plainfield Avenue

South Plainfield

908-769-4264

EDWARD J. COLUCCI GEMOLOGIST

**WE BUY GOLD**

### PAVING

**MARK L. DI FRANCESCO**

**PAVING • MASONRY**

Free Estimates

Driveways • Parking Lots • Seal Coating • Pavers • Wallstone

Slate • Bluestone • Excavating • Foundations • Block Work

Cultured Stone • Drainage • Water Proofing

**3RD GENERATION IN BUSINESS**

**908-668-8434**

### PLUMBING, HEATING & COOLING

License #8741

**Professional Plumbing, Heating & Cooling, Inc.**

(908) 561-1941

South Plainfield, NJ

**FRANK MCCARTHY**

### ROOFING

**CELEBRATING 50 YEARS**

Since 1960

**J.T. PENYAK ROOFING**

**908-753-4222**

[www.penyakroofing.com](http://www.penyakroofing.com)

3571 KENNEDY ROAD

SO. PLAINFIELD, NJ 07080

### SNOW REMOVAL

**Silver Creek Landscaping**

SOUTH PLAINFIELD

**SNOW REMOVAL**

PLOWING - SANDING - SALTING

• Office Buildings

• Apartment & Condo Complexes

• Retail Stores

• Schools and Churches

-Sign up now for 24 hour service-

**908-756-7272**

### SNOW REMOVAL/SALT

Call **KLK Trucking** for:

Sand/Salt Mixture, Bulk Rock

Salt, Ice Control Sand

Sanding • Salting • Snowplowing

Pick up or Deliv., Mon. thru Sat

**908-757-4434**

265 Ryan Street

South Plainfield

### TILING

Fully Insured

Free Estimates

Commercial

**DC TILE & MARBLE**

Installations of: • Backsplashes • Floors

• Walls • Shower/Tub Areas

Custom Designs & Patterns

Ceramic • Granite • Marble • Porcelain • Slate

Piscataway, NJ

908-616-4062

Residential





Jason M. Oszczakiewicz

## South Plainfield Funeral Home Welcomes New Manager

Jason M. Oszczakiewicz, former manager of McCracken Funeral Home in Union, has been appointed manager of the South Plainfield Funeral Home, 2456 Plainfield Ave. He has been involved in the funeral industry for 20 years, and has been a licensed funeral director in the State of New Jersey for the past 15 years. Jason and his associate, Brittnee Hagerty, are excited to meet the families, clergy members and local business owners in South Plainfield.

Jason brings a vast amount of experience and expertise to serving families who have lost a loved one and strives to help make a difficult situation easier for the families he serves. An open house for South Plainfield Funeral Home will be scheduled for

late spring to early summer after the completion of exterior renovations, which will complement the interior renovations.

South Plainfield Funeral Home was recently selected to become an exclusive certified Veterans and Family Memorial Care provider (VFMC) for South Plainfield. VFMC providers are selected because they uphold the highest level of ethical business standards and integrity while providing outstanding, affordable professional service. The staff members of South Plainfield Funeral Home are experts in assisting families with all aspects of the final arrangement process and they work closely with all veterans service organizations and local hospices.

Oszczakiewicz has demonstrated a commitment to reach out to veterans and their families by providing affordable, quality funeral and cremation arrangements. The Web site for the VFMC is [www.VeteransFuneralHomes.com](http://www.VeteransFuneralHomes.com).

VFMC providers are also reaching out through participation in the Cell Phones for Soldiers Project. More than 150,000 troops are serving overseas and are away from their families. VFMC providers nationwide are calling on all Americans to support these brave men and women by donating old cell phones, and as an exclusive VFMC provider, South Plainfield Funeral Home is an official drop off site for Cell Phones for Soldiers to help

troops stay connected with their families.

South Plainfield Funeral Home has also become an Old Glory Collection Center as part of being a VFMC provider. The mission is to collect old, tattered, unusable flags to be retired in a dignified manner in accordance with the U.S. Flag Code.

Local residents can support the collection drives by donating their old cell phones or bring their tattered flags to South Plainfield Funeral Home, 2456 Plainfield Ave., between the hours of 9 a.m. and 4 p.m. The funeral home can be reached at (908) 756-2800 or [www.SouthPlainfieldFuneralHome.com](http://www.SouthPlainfieldFuneralHome.com).

## Obituaries

### Robert S. Robjohns, 44



Robert Robjohns went to be with God and placed in the waiting arms of his loving grandmothers, Laura Robjohns Mercanti and Wilma

Berry on Sunday, Feb. 7. Robert passed away at Hunterdon Memorial Hospital with his beloved wife, Jacqueline, by his side.

He was born in Newark to his loving parents, Robert and Roberta Robjohns of South Plainfield. He had been raised in South Plainfield since 1966, moving to Highland Park after his marriage to Jacqueline, and in 2005 they moved to Stewartsville in North Jersey.

Robert was an auto mechanic for 25 years, working most of those years for Piscataway Auto & Truck.

He enjoyed spending time with his sons, working around the house and tinkering with cars. His love for music, family and his fondness for speed racer #3 Dale Earnhardt put a smile on his face and a song in his heart.

Robert spent the last few years of his life transporting children to and from school as a school bus driver.

Surviving are his beloved wife of 17 years, Jacqueline (Belenski); two sons, Kenneth and Thomas of Stewartsville; his parents, Robert and Roberta Robjohns of South Plainfield; a brother, Douglas Robjohns and his daughters Hayley and Ashley of South Plainfield; a sister, Dawn DeFrance and husband William and their daughter Miranda of Alpha. Extended family members on both sides will dearly miss Robert very much.

Memorial services were held for Robert on February 13 at the Old Greenwich Presbyterian Church in Stewartsville.

In lieu of flowers, donations for his wife and children would be greatly appreciated and can be sent to Old Greenwich Presbyterian Church, 17 Greenwich Church Rd., Stewartsville, N.J. 08886.

Kimberley Honnick and husband William of Exton, Pa. and Grace Cotone of Scottsdale, Ariz.; two sons, Anthony Cotone and wife Diana and Ralph and wife Marge, both of South Plainfield; a sister, Julia Gajarsky of South Plainfield; 17 grandchildren, and was referred to as "Grandma Chris" to 27 great-grandchildren. Also surviving are many nieces and nephews.

Funeral services were held at McCrisky-Gustafson Home For Funerals.

### Margaret Jessie (Zylstra) Luehman, 81

Margaret Jessie (Zylstra) Luehman died on Sunday, Feb. 14 at Robert Wood Johnson University Medical Center in New Brunswick.

Born and raised in Paterson, Mrs. Luehman resided in South Plainfield for nearly 55 years.

For 21 years Margaret worked as a secretary for South Plainfield High School, retiring in the early 1980s.

She loved to cross stitch and embroider fabrics. Margaret was an avid reader and also volunteered at South Plainfield Public Library. In addition, she also enjoyed to travel and go camping.

She is predeceased by her husband, John W., and by an infant son, Kirk William.

Surviving are a daughter, Jane R. Luehman of South Plainfield; a son, Kent W. and wife Carol of Gaithersburg, Md.; and a brother, Peter Zylstra and wife Ingrid, and two granddaughters, Christine and Kimberly.

Funeral services were held at McCrisky-Gustafson Home For Funerals.

In lieu of flowers, donations can be made to the South Plainfield Public Library, 2484 Plainfield Ave., South

Plainfield, N.J. 07080.

### Renee (Hines) Healy, 82

Renee (Hines) Healy died on Sunday, Feb. 14 at home.

Born and raised in Brooklyn, Renee lived in Long Island for a short time before settling in South Plainfield along with her husband John in 1957.

Mrs. Healy was a homemaker who loved her family, taking pride in her children and grandchildren. She loved to travel and was a member of Sacred Heart RC Church in South Plainfield.

Renee is predeceased by a brother, Richard.

In addition to her loving husband John of 55 years, surviving are four daughters, Patricia Finn and husband Ned of Basking Ridge, Kathleen Fenlon and husband Bill of Charlotte, N.C., Maureen Disch and husband Bryan of South Plainfield and Ann Conklin and husband Mark of Monroe Twp. and 11 grandchildren.

Funeral services were held at McCrisky-Gustafson Home For Funerals.

In lieu of flowers, donations can be made to the Haven Hospice, c/o JFK Medical Center 65, James St., Edison, N.J. 08818.

### John DeVico, 93

John DeVico died on Tuesday, Feb. 9 at his daughter's home in Middlesex.

Born in Plainfield, John resided in South Plainfield for the past 55 years.

A veteran of WWII, John served with the U.S. Army. He is a life mem-

ber of the South Plainfield VFW Post #6763 as well as the South Plainfield American Legion Chaumont Post #243.

In 1980, Mr. DeVico retired from the Middlesex County Detention Center in North Brunswick as a senior supervisor.

An avid golfer, John was a member of the Plainfield Country Club's West Nine Golf Course, and during his lifetime play he achieved two holes in one.

He is predeceased by his wife, Bessie, who died in 1985.

Surviving are three daughters, Heather Staats and husband William, Madeline Penyak and husband Joseph of South Plainfield and Jeanette Bivona of Middlesex; three sons, John DeVico and wife Linda of Colorado, Frank DeVico and wife Patricia of Middlesex and Alexander DeVico of Rochester, N.Y.; a sister, Carol Hartpence of California; 15 grandchildren and 17 great-grandchildren.

Funeral services were held at McCrisky-Gustafson Home For Funerals.

### Second Anniversary

In Loving Memory of  
**John "Jack" L. Mocharski**

December 8, 1929–February 22, 2008



Forever in our hearts

Wife, Toni

Children and Grandchildren

### Christina (Robustelli) Bumback, 92

Christina (Robustelli) Bumback died on Tuesday, Feb. 9 at home.

Born and raised in South Plainfield, Mrs. Bumback had resided in town her entire life.

She was a member of Sacred Heart RC Church, but her two passions in life were cooking for people and being a foster mother. She was a foster parent to nearly 75 children throughout her life and took special care in all.

She is predeceased by her husband, Frank "Butch"; a son, John R. Corone; a son-in-law, Bob Doyle; three sisters and three brothers.

Surviving are three daughters, Louise Doyle of South Plainfield,

**Hillside Cemetery**  
Regarded as one of the most beautiful cemeteries in the East  
**Scotch Plains**  
908.756.1729  
[www.hillsidecemetery.com](http://www.hillsidecemetery.com)  
It is far easier for your family if you plan ahead



### In Memoriam

**Lorraine Cochran**

4/26/45 to 2/21/08

Your time on earth was much too short  
Your pain and suffering too long  
But we must believe God's promise  
That to him you now belong  
It doesn't seem two years have passed  
Since he called you home  
But you will always be in all our hearts  
Until we meet again.

Your Loving Family: Bill, Brian, Laurian, Skylar, Billy, Barbara, Quinn, Ben, Jack, Charles, Wren, Chris, Michelle, Dale & Emma

**McCrisky-Gustafson**  
"An Independent, Family Owned & Operated Funeral Home"  
HOME FOR FUNERALS, LLC  
(908) 561-8000  
2425 Plainfield Ave., South Plainfield, NJ 07080  
PRE ARRANGEMENTS • S/S MEDICAID PROTECTION • CREMATION SERVICES  
GREEN BURIALS  
James A. Gustafson, Pres./Mgr. • N.J. Lic. No. 4205  
Richard W. McCrisky II, Vice-Pres./Dir. • N.J. Lic. No. 4564  
Richard W. McCrisky, Dir. • N.J. Lic. No. 3147  
William C. McCrisky, Dir. • N.J. Lic. No. 3382  
Daniel M. Erickson, Dir. • N.J. Lic. No. 4798

Want some good news? **Subscribe!**

What's going on in your town?  
✓ Yes, I want home delivery.  
Call 908-668-0010  
Save a stamp... E-mail your request to [spobserver@comcast.net](mailto:spobserver@comcast.net) \*\* We now accept VISA and Mastercard \*\*