

Don't forget your sweethearts this Sunday... Happy Valentine's Day!

South Plainfield Observer

*****CAR-RT LOT**C-026**
 ##
 SP PUBLIC LIBRARY
 2484 Plainfield Avenue
 S Plainfield, NJ 07080 - 3531

19

VOL. 13, NO. 23

Member New Jersey Press Association

60 CENTS

FEBRUARY 12, 2010

Finance Chair Seeks Budget Cuts

Preliminary Budget Shows \$600,000 Shortfall

Borough Finance Committee Chair Councilman Ray Rusnak is seeking input from the mayor and fellow council members to help close a \$600,000 gap in the borough's preliminary budget which must be submitted to the state for review by March 31. This will be the first year that a council majority will be solely responsible for its own budget after the switch last year from a July through June fiscal year.

The foremost reason for the deficit is a trend many communities through the state are facing and the loss of revenue generated by property taxpayers to fund the budget. Vacant homes and store fronts, along with commercial property owners that have been victorious in their tax appeals, have left

the borough with a bigger void to fill. In addition, operating costs are on the rise. According to Rusnak, the interest earned on the town's investment portfolio last year is down by \$73,000 alone.

One of the reasons behind the borough's switch from a fiscal year to a calendar year cycle was that it would allow state aid figures to be included when formulating the budget; however, that has yet to happen.

Governor Chris Christie has until March 16 to lay out the state's fiscal budget, with some estimates coming in at a shortfall of between \$8 and \$11 billion. Municipalities are likely to receive even less aid than in the past. CFO Glenn Cullen said

it is still "very premature" to give a budget figure for this year. "We have absolutely no guidance in regard to state aid. Leaving aid flat, we are approximately \$600,000 above the [tax] levy cap figure."

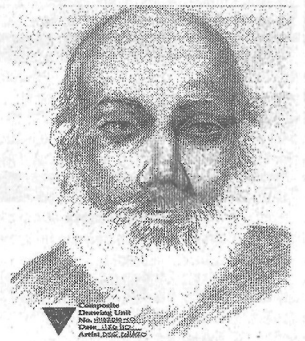
Some ideas being considered by the Republican Majority are consolidating more jobs and savings through attrition. "The budget is still a work in progress," said Rusnak. He is calling upon department heads to come up with even further cost-saving measures than those implemented last year. Taxpayers Advisory Group member Frank Mikorski suggested at the February 1 council meeting that the town look into some of the group's recommendations for savings.

Police Seek Help in Identifying Dead Man

The South Plainfield Police Department has released a composite sketch of the unidentified male who was discovered on January 17 in the wooded area of the property of Harris Steel on New Brunswick Avenue. The discovery was made by two local residents who were walking through the wooded area. Police do not suspect foul play.

The deceased is described as a Caucasian male, 65-75 years of age, bald, with a white beard, 5'4", weighing approximately 110 pounds, with no visible top or bottom teeth and a tattoo of the name "Frank" on his left arm.

Anyone with information as



to the identification of this man is urged to contact Sgt. Noonan or Detective Pacillo of the police department at (908) 226-7660.

For 100 years, the Boy Scouts of America has been helping the youth of American find - in themselves and the world around them - more than they thought possible. In every era, and through numerous trends of the past century, Scouting has been steadfast. Our 100th Anniversary provides a unique opportunity to celebrate this heritage and lay the foundation for the next 100 years.



BOY SCOUTS OF AMERICA ★ 100 YEARS OF SCOUTING

BSA 2010

CELEBRATING THE ADVENTURE ★ CONTINUING THE JOURNEY

South Plainfield Scouts hold a candlelight ceremony at Spring Lake Park in the gazebo. For complete story, see next week's issue.

Gate Closure Jams Traffic

The Board of Education has made a decision to permanently lock the new gate between the middle school and high school parking lots, which has created block upon block of idle traffic on Merchants and Lane avenues as well as Plainfield Avenue.

The gate was replaced as part of last summer's \$250,000 paving project. The gate had been locked by middle school custodians during lunch time after the board heard complaints last year of high school students speeding through the lot. Since the new gate has been in place, it has been closed around the clock, including on weekends, leaving only a small opening on one side for foot traffic.

Logistically there are only two roads leading out of both schools' parking lots, Merchants and Lane avenues. Both exit to Plainfield Avenue; Lane has a traffic signal and Merchants does not. The middle school parking lot can only be accessed from Plainfield Avenue and vehicles must now exit solely onto Merchants Avenue. The main entrance to the high school parking lot is via Lane Avenue, which received a makeover after the paving

to include a new traffic pattern and ease the flow of student drop-offs and pick-ups. Residents have complained about drivers using excessive speed on Lane, and in a joint venture between the borough and BOE, federal grant money was used to install speed tables to slow down drivers entering and exiting the area. Ritter Avenue is the only other viable access to the parking lot, and speed humps were installed there by the borough after residents also complained of excessive speeding on their street.

The access road alongside the high school gym, which is also newly paved, has been gated off permanently since September. Business Administrator Rich Guarini said at the time that the gate closure was ordered by high school Principal Dr. Ken May, who was concerned about "outsiders" playing on the fields next to the school.

The only way to maneuver between the high school parking lot and Lake Avenue is through another gated area that is only open during school days. This area contains school busses and

(Continued on page 16)

Library Move Topic of Discussion

The South Plainfield Free Public Library Board of Trustees will hold their monthly meeting on Tuesday, Feb. 16 at 7 p.m. at the library and discuss plans to move from their present location on Plainfield Avenue to Montrose Avenue. According to Eric Aronowitz, president of the Library Board of Trustees, plans for a new library had been in the works for six years, but after being voted down during a Democracy Week vote in May 2008, the board had to come up with a "Plan B."

A 1992 independent study determined that the current building, which is 6,400 sq. ft. and 45 years old, was 50% too small when it was originally built. The library's location in a flood zone prohibits adding any space to the building. "We cannot extend the present building because the land behind the library is deemed a flood zone, and we cannot put on a

second floor because the foundation cannot support it," said Cheryl Nagel-Smiley, vice president of the board of trustees in a letter to the *Observer* (see letter on page 2).

In an 8-1 vote at the January 12 meeting, the board authorized negotiations for a long-term lease to house a new library. The proposed 14,500 sq. ft. property, located at 901 Montrose Ave., is the same size as the new library would have been had the council moved forward on the project in 2008. The landlord will "fit-out" the building to the board's specifications.

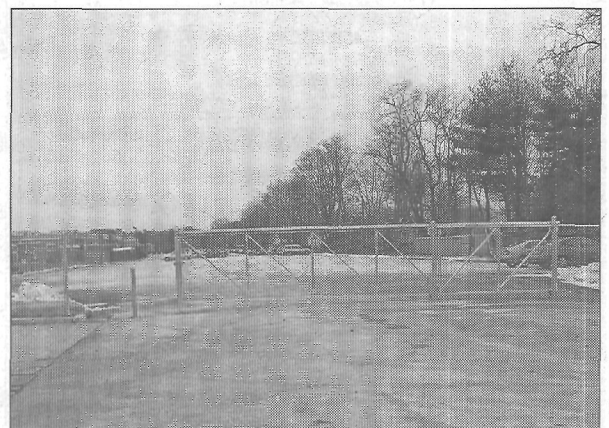
The library currently receives mandatory minimum funding from the borough, and has always operated within those limits. "The board had to find a way to get a new library which had no impact on the taxpayers," said Nina Rohrer, chairperson of the board's budget and finance committee,

who went on to say that they "have and will continue to operate the library within the minimum funding level."

According to Aronowitz, the cost of leasing the new building would be "tax neutral" with no impact on taxpayers whatsoever. If the lease negotiations are successful, the library could be in the new building by July 1 or earlier.

"Our staff has been incredible, considering the conditions under which they have been working. Things are so cramped that when we have a children's program, the library is virtually unusable by our other patrons. The new building will allow everyone, from young adults to senior citizens, to use the library's services, without disruption. Our staff will finally have a work environment they deserve," said Sundra Randolph, library director.

The February 16 meeting is open to the public.



The gate that connects the middle and high schools will remain locked.



Want home delivery of the Observer? Call 908-668-0010 or Email spobserver@comcast.net.

Want to be informed about the business of your Council and BOE?

FYI

Borough Council & BOE

Council meetings air on Comcast Channel 96 Mondays at 7 p.m. (Check Comcast community bulletin board for last minute time changes.) To purchase a complete copy of a council or BOE meeting, contact the Observer. BOE Meetings air on Thursdays at 7 p.m.

council meetings

Meets twice a month on Mondays, *except where noted.

Borough Hall Council Chambers • Questions? 908-226-7605

Special Meeting—February 16—Community Development Block Grant 6:45 p.m.

Agenda Meeting **Public Meeting**

February 16 (Tuesday) February 16

March 1 March 1

All Agenda Meetings begin at 7 p.m. followed immediately by the Public Meeting, unless otherwise noted. Meetings of the Governing Body are held in accordance with the N.J. Open Public Meetings Act (N.J.S.A. 10:4-6 et seq.) in the Council Chambers at 2480 Plainfield Ave.

planning board

Meets second and fourth Tuesday of the month, *except where noted.

Borough Hall Council Chambers, 7 p.m. Questions? 908-226-7641

Feb. 23, Mar. 9, Mar. 23, Apr. 13, Apr. 27, May 11, May 25, June 8, June 22,

July 13, July 27, Aug. 10, Aug. 24, Sept. 14, Sept. 28, Oct. 12, Oct. 26, Nov. 9 Dec. 7.

zoning board of adjustment

Meets second and fourth Thursday of the month, *except where noted.

Borough Hall Council Chambers, 7 p.m. Questions? 908-226-7641

Feb. 25, Mar. 11, Mar. 25, Apr. 8, Apr. 22, May 13, May 27, June 10, June 24,

July 8, July 22, Aug. 12, Aug. 26, Sept. 9, Sept. 23, Oct. 14, Oct. 28, Nov. 11* and Dec. 9.*

board of education

Meets Wednesdays at 7:30 p.m. at Roosevelt Administration Gymnasium on Jackson Ave.

*except where noted.

Committee of the Whole: (NOTE: Feb. 10 has been rescheduled to Feb. 17 at 6:30 p.m.

followed by the regular public meeting.) March 10 and March 31

Regular Public Meeting: Feb. 16, March 17 and April 14

BOE curriculum/technology/student activities

Meets once a month on Wednesdays at 4 p.m. in 2nd floor conference room,

Roosevelt Administration Building on Jackson Ave.

March 3 (April to be announced)

BOE buildings & grounds

Meets second Monday of the month at 7 p.m., 2nd floor conference room,

Roosevelt Administration Building—March 8

recreation commission

Meets once a month on the second Tuesday of the month, except July and August

PAL Building, Maple Ave. 7 p.m. Questions? 908-226-7716

taxpayers advisory group

The Taxpayers Advisory Group (TAG) meets the fourth Tuesday of every month at

Borough Hall, 2480 Plainfield Ave. at 7 p.m. Questions? 908-769-0786.

site plan sub-committee

Meets once a month on the third Tuesday of the month, 7 p.m.

Feb. 16, Mar. 16, Apr. 20, May 18, July 20, Aug. 17, Sept. 21, Oct. 19, Nov. 16, Dec. 21

environmental commission

Meets once a month (second Wednesday) Borough Hall Conference Room, 8 p.m.

Questions? 908-226-7621

business advisory group

Meets once a month (first Wednesday) Borough Hall Council Chambers, 5 p.m.

Questions? 908-757-8100



The South Plainfield Observer is published weekly on Fridays by G&G Graphics Inc.

How to Reach Us



1110 Hamilton Boulevard, Suite 1B, South Plainfield, NJ 07080

Ph: 908-668-0010 • Fax: 908-668-8819

Email: spobsobserver@comcast.net

www.spobsobserver.com

EDITORIAL

908-668-0010

CIRCULATION

To subscribe to the Observer

call (908) 668-0010

ADVERTISING

Display (908) 668-0010

Classified (908) 668-1258

Publisher/Editor-in-Chief Nancy Grennier
Associate Publisher Wayne Grennier
Art Director/Associate Editor Susan Kaneps
Staff Writer/Photographer Patricia Abbott
Staff Writer Libby Barksy

Editorial Assistants.....Jane Dornick, Jean Fultz
Production Assistants.....Jennifer DeCosta,
Holly McDede, Barbara Smith
Advertising Sales.....Jane Dornick, Jean Fultz
Roxanne Cortese

The South Plainfield Observer (U.S.P.S. 018253) is published weekly, except Thanksgiving week. Second class postage paid at South Plainfield, New Jersey 07080-9998. Postmaster: Forward change of address orders to G&G Graphics Inc. 1110 Hamilton Blvd., Suite 1B, South Plainfield, NJ 07080-2004. Subscription rates \$29.95/year in South Plainfield; \$34.95 year out of town.

SUBMIT YOUR ARTICLES

We encourage the submission of stories and photos. To get an article published: Type (double spaced) the article and mail, email or fax. Include name, address and telephone number. **Deadline for submission is Monday, 5 p.m.**

LETTERS TO THE EDITOR

Submit letters to the editor by mail, email or fax. Letters should not exceed 200 words. We reserve the right to edit for clarity or length. Letters must include name and phone number, for verification.

To comment on the content or to suggest a special story idea, contact the publisher at (908) 668-0010.

The publisher is not responsible for typographical errors.

In My Opinion

Opinions expressed in this column are not necessarily those of the publisher, nor do we guarantee accuracy.

Dear Editor,

We received a copy of the January 22 edition of the *South Plainfield Observer*, which was sent to us by our son's friend, Mrs. Plate. We were at once a little surprised, but immensely grateful, to read the memorial and tribute to our son, Dale Salisbury.

Although parents are surrounded with reminders and memories on a continual basis, time tends to cause these reflections to fade with non-family friends, and your thoughtful remembrance was sincerely appreciated.

We are still proud of Dale's dedication as a consummate teacher, who loved and enjoyed working with, and helping his students. He was personally committed to the success of those he touched, and often talked about the extra curricular activities in which he and participating students shared common interests and dedication.

As we struggled with our loss, we also felt saddened as we realized the void his passing would create in the lives of those to whom he felt so close, and were always in his thoughts.

Thank you, Nancy and Patricia, for your kindness in reminding those for whom he cared so much; he was someone special.

**SINCERELY AND GRATEFULLY,
HAROLD & KAY SALISBURY**

Dear Editor,

I write in response to the letter to the editor by Eric Aronowitz, chairman of the library board. I respect Mr. Aronowitz and all members of the library board for their dedication to South Plainfield. They are volunteers who only want to do what is right for all of those who utilize the library.

Everyone agrees that the present facility does not adequately serve the needs of our residents. I can understand the frustration of all of those involved in being unable to finalize a plan for a new library.

However, the plan to rent space in the industrial section of Montrose Avenue is not the answer to the problem. In every town that I know of the library is centrally located. Montrose Avenue is not within walking distance of any of our schools. Even those who attend Roosevelt School would have to cross Hamilton Boulevard and walk among the factories to get to the proposed site. It would be a dangerous walk for anyone, let alone young children.

I also think it is a misallocation of taxpayer's money to lease space. The taxpayers will have nothing to show for their investment when the lease expires. We should first examine the possibility of expanding the present library building. If that is not feasible, we should look into purchasing a piece of property that will enhance our center of town. The cost of a replacement site could be offset by the sale of the land next to Unity Bank which was originally designated for a new library. I urge the library board to reconsider their decision. I suggest we hold another Democracy Day and get our residents input on how to proceed.

Some of the questions should be: (1) Should we build a new library or lease space? (2) Should we expand the existing library? (3) Should we consider purchasing property to build a new library in the center of town?

This decision will affect our town for decades. Let's get as much input as possible before we come to a final decision.

JEFFREY WILLIAMS

Dear Editor,

I am writing in regards to an E-mail my grandparents (Harold and Kay Salisbury) sent you about the memorial/tribute to my father, Dale Salisbury. They forwarded me the E-mail they sent to you, and I just was hoping to find out if you would be willing to send me a copy of that article. I didn't know my father as I really wish I did and I try to hold on to the memories that others had with him, as well as my own, to understand who he was. And I know he was great.

**SINCERELY,
ERIKA KLEES**

South Plainfield Residents:

Relocating the South Plainfield Library has been in limbo for the last six years. We know that the present building is too small and the staff is working under the most deplorable conditions. Here are the facts:

- 1) The Board of Trustees was committed to building a new library.
- 2) That project was ready to go, but was stopped by the citizens with the Democracy Day vote.
- 3) Since that vote The Board of Trustees has been looking for alternative ways and solutions to give the citizens of South Plainfield a better and more up to date library.
- 4) We cannot extend the present building because the land behind the library is deemed a flood zone and we cannot put on a second floor because the foundation cannot support it.
- 5) We have looked at other commercial sites closer to the center of town, but they are not affordable.
- 6) The proposed location on Montrose Avenue is the first reasonable and possibly affordable rental property.

Our reasons for the move:

- 1) It would give the library almost twice the space of the present library.
- 2) There would be ample parking, it has handicap accessibility, a larger children's library and craft area, a large meeting room, quiet rooms, more computer area and all library programs can take place in the library.

Submit Your Letters to the Editor:

Send your letters to South Plainfield Observer, 1110 Hamilton Blvd., Suite 1B, South Plainfield, NJ 07080, or fax to 908-668-8819, or via E-mail: spobsobserver@comcast.net. **Deadline is Monday, 5 p.m.** Letters must be accompanied by a name and telephone number for verification. Limit letters to no more than 200 words. We reserve the right to refuse a letter, to edit for clarity or length, and to limit the number of letters submitted on the same subject. Submission is not a guarantee of publication. We do not accept anonymous letters. Letters are strictly opinion.

3) The move would not cost the taxpayers one penny.

4) The present library building which the town owns could be used by the municipality.

We cannot please everyone. Granted there are a few patrons who do walk to the library, but the majority do not. In this day and age parents drive their children to the mall, the movies, to friends' houses, to the pool, the PAL, back to school for events, to the Little League fields (which also do not have sidewalks and have a lot of traffic from the recycling area), why would driving their children to the library be such a hardship? We also will be making arrangements to accommodate the senior citizens.

It has been reported, documented, and videotaped that some of the students who do walk to the library from the middle school are there to create problems and do not use the library for academic reasons. Many patrons have complained and staff have been verbally abused by these students which has caused the library board to spend an astronomical amount of money in hiring off-duty police officers to maintain order and remove these students. Those students who want to use the library for academic reasons will find a way to get there.

While nothing has been finalized, we are continuing our goal. If someone would like to come forward and donate land and money to build a new library, or provide us with a large facility that can be leased at a reasonable price in the center of town, please contact us. The South Plainfield Library Board of Trustees is trying to give the taxpayers of this town a state of the art library at no cost to the taxpayers. Many towns do not have their libraries located in the center of town. I think six years in limbo is long enough.

**CHERYL NAGEL-SMILEY
VICE PRESIDENT
SOUTH PLAINFIELD LIBRARY
BOARD OF TRUSTEES**

To the Editor:

Dear Mr. Bengivenga: Two weeks ago I wrote a letter to the *Observer* concerning borough appointments. I never mentioned political parties or

(Continued on page 14)

FRANK'S Automotive



Family Owned
Since 1989

A Job Done Right Guaranteed

Introducing our
**18 Month or 18,000 Mile
Limited Warranty.**

**A 50% longer warranty shows
we're serious about fixing your
car properly the first time and
we put it in writing.**

**1st Time Customers receive \$5
off on a Lube, Oil, and Filter
Service or \$20 off any service
over \$100.00**

**1521 Park Ave
So Plainfield NJ 07080**

franksautomotiveservice.com

908-753-0277

From the South Plainfield Library

Bookmarks

By Kenneth Morgan

Looks like we've got another holiday logjam here. Within the next few days, we've got Lincoln's Birthday, Valentine's Day, Chinese New Year, Presidents' Day, Washington's Birthday (the actual one), Fat Tuesday, and Ash Wednesday, with Purim coming in a couple of weeks. With any luck, you can fit something else into the schedule: the latest news from the South Plainfield Library.

The library will be closed today (February 12) in observance of Lincoln's Birthday, and on Sunday and Monday (February 14 and 15), in observance of Presidents' Day.

Due to the Monday closing, we'll have a slightly abbreviated schedule of children's programs next week. "Storytime," for children ages four and over, is scheduled for Tuesday morning at 10:30, Wednesday evening at 6:30 and Thursday afternoon at 1:15. "Time for 2's & 3's," for children ages two and three, will be held on Wednesday and Thursday at 10:30 a.m. And "Baby Time," for children ages two and under, will be held on Friday morning at 10:30. Each program lasts about an hour and features stories, songs and a craft activity for the older kids. Each is presented free; no pre-registration is required. For more details, please call and ask for Miss Linda or Miss Mija.

Following articles in the *Observer* and other media outlets, there have been a lot of questions regarding our proposed move to a new location on Montrose Avenue. Several people have come up to your reasonably-humble correspondent asking what's going on with this matter. Well, I'm going to give you the same advice I give them: come to the Library Board of Trustees meetings. There, you can find out the latest news about the library from the people most informed on the situation. The next meeting is set for Tuesday, Feb. 16 at 7 p.m. here at the library. Everyone is invited to attend; be advised that the public Q&A

time occurs early in the meeting.

In response to a number of requests, we're going to start another round of classes in basic computer usage. The first class, appropriately called "Introduction to Computers," is scheduled for Thursday, Feb. 18 at 7 p.m. The classes are free of charge. Space is limited, so you must pre-register.

Here's a heads-up about an upcoming program. Composer/musician Matthew Fishteyn will be performing at the library on Sunday, Feb. 28 at 2 p.m. A young man who is a very experienced musician, he'll be performing music in a variety of styles, from classical to jazz, on the guitar and keyboard. This performance is free of charge; no pre-registration required.

At this writing (about a week before this reading), we're gearing up for another considerable snowfall in New Jersey. Even if it is a bit after the fact, we've still got more winter to get through, so here's a reminder regarding closing weather closings. If we need to close unexpectedly, we'll make sure an announcement is sent to local radio stations WAWZ (99.1FM), WCTC (1450 AM) and NJ 101.5FM. They'll be publicizing this either over the air or on their respective Web sites. We'll also put up a note on our Web site (see below for the address) via the on-line events calendar. And, if we can get a staff member to reach the building, we'll use the old stand-by of a sign on our main doors. In any case, if the weather gets bad, we'll do what we can to let you know if we're open. And, if we aren't, we'll take that into account when it comes to overdue items. (Sure, we want those DVDs brought back, but don't risk your life to do it.)

That's about all for now. If you need more information, just call us at (908) 754-7885 or visit the Web site at www.southplainfield.lib.nj.us. We'll be right back.

Correction

In the February 5 issue of the *Observer* in the story "Children's Author Visits Franklin School," the caption on the bottom photo should have read "Third grader Kylie Mott with author Marcie Aboff." Also, the grand prize winner was Kylie Mott. We regret the error.



Mayor Charles Butrico (left) and Councilman Matt Anesh (right) with rescue squad officers who were sworn in at the February 1 council meeting. The 2010 officers are: Chief Edward Laferrera, Deputy Chief Ronald Sward, Captain Robert Dolan, 1st Lieutenant Steven Morales, 2nd Lieutenant Bill Westhoven (not pictured), President Keely Heyman, Vice President Holly Laferrera, Treasurer Rich Gilson, Secretary Julie Wilson, Trustee Robert Dolan, Trustee Brian Anderson and Trustee Jose Heavens.

Future Stars Parents Group Fundraiser

The Future Stars Parents Group will be offering CPR classes to parents and family members at a discounted price as a fundraiser. The Future Stars Parents Group will receive \$10 for each registration received.

The course is the American Heart Association's "Family and Friends: CPR" as well as a bonus course, "Family and Friends: First Aid for Children."

Class will include adult, child and infant CPR, relief of choking in an adult, child or infant and how to handle injury and illness to a child before help can arrive.

The course is recommended for babysitters, parents and immediate

family members. You must be 14 years old to take the course.

The class will be taught by local police officers who have years of experience with CPR and first aid. It is very important for everyone to possess the tools to keep children safe and this class is a very important step. The course is approximately 2½-3 hours, depending on class size.

You can choose one of the following available dates: Saturday, Feb. 20 noon to 3 p.m. (register by February 15); Thursday, March 4, 6 to 9 p.m. and Wednesday, March 10, 6 to 9 p.m. (register by February 26). Walk-in registration is \$40.

The course will be taught at the South Plainfield Rescue Squad, 2520 Plainfield Ave. Cost is \$35 per student (discounted from \$60). All manuals, reminder cards and AHA course participation cards are included in the cost.

For more information or to register, call Stephanie Salerno at (908) 930-7744 or E-mail her at ssalerno1016@aol.com.

CAREGIVER SERVICES

Marisol's Home Caregiver Services

Family owned & operated
Providing affordable
in-home care, daily or live-in

NJ State licensed, fully insured & bonded

Services include and are not limited to:

- Companionship
- Meal prep
- Personal care
- Laundry
- Transportation
- Errands
- Light housekeeping
- Medication reminder

Please call for a free
in-home consultation.

Call (732) 912-9312

Century 21
Moretti Realty
(908) 755-5300
Ext. 302
(908) 578-1166

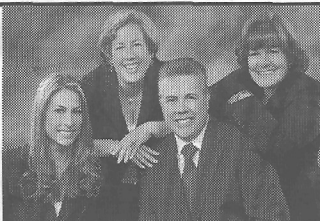
Experience Isn't Expensive,
It's Priceless.

THE LACERDA TEAM

Andrea Lacerda, Jesse Lacerda
Sue Espin, Michele Leavy

www.LacerdaTeam.com

225 Maple Ave., South Plainfield, NJ 07080 South Plainfield's Premier Real Estate Team



The Lacerda Team at
Century 21 Moretti Realty

PAINTING

Glaze to Amaze, LLC

732-877-8046

Bud Beresford - Owner, South Plainfield
Licensed/Insured #13VH03572100

JOE FASANO

732.752.3555

FREE ESTIMATES

HEATING & COOLING

We've got a special attraction for you....

Ruud Super High Efficiency Air Conditioners and Furnaces -
Paired Up For Peak Performance!

HOMETOWN HEROS

"Quality Food For Everyday Heroes"

SEND-A-PLATTER

We will send to any home a beautifully arranged
and wrapped assorted sandwich tray with two
of our homemade salads...Any Day-Any Time.

Communion Catering packages starting at \$5 per person.

\$4.95

SUBS • SANDWICHES • WRAPS • HOMEMADE SALADS...

...ALWAYS FRESH!!!

HOMETOWN HEROS

340 Hamilton Blvd. (By the DARE Bldg.)
(908) 755-HERO (4376)

Check out our menu at www.hometownherosdeli.com

- ✓ 1ST IN QUALITY
- ✓ 1ST IN SERVICE
- ✓ 1ST IN PRICE

ENROLL NOW!!

South Plainfield
Adult School Has Openings in

**The 3 & 4 Year Old
Inclusive Pre-School Program
5 HALF DAYS, PAY FOR 3**

For more information
about the program, or to enroll for September,
please call the Adult School at:

908-754-4620 Ext. 385

Events

Soccer Club Mardi Gras Fundraiser

February 12

Step into a world of Cajun food and fun on Friday, Feb. 12 when the South Plainfield Soccer Club holds its first Mardi Gras party at the Senior Center, 90 Maple Ave., 7 p.m. Menu features authentic Cajun food with a choice of jambalaya, shrimp etouffée and chicken gumbo, along with appetizers and desserts. Beer, wine and New Orleans style hurricane drinks will be available. Marshall's Dixieland Band will provide music. Tickets (\$25) are available at the door.

Call Bill Garner (908) 397-3936 or Chris Sanko (908) 561-5533 for information.

Girl Scouts Candy Bar Bingo Fundraiser

February 12

The South Plainfield Girl Scout Community's candy bar bingo fundraiser will be held at Sacred Heart School cafeteria on Friday, Feb. 12 at 7 p.m. Admission is \$5 per person in advance, \$6 at the door plus one regular-sized candy bar per person. Bingo games and a make-your-own ice cream sundae bar is included with admission.

For tickets and information, please call Christa at (908) 510-4089 or Heidi at (908) 391-0134.

Pet Dental Fair

February 14

Plainfield Animal Hospital, 2215 Park Ave., is holding a pet dental fair on Sunday, Feb. 14 from 2-4 p.m. Bring your pet for a free dental examination and learn about the importance of pet dental health. Giveaways, contests, tours, door prizes, refreshments.

Lenten Fish Dinners at Sacred Heart

February 19, 26, March 5, 12, 19 and 26

The South Plainfield Knights of Columbus Council #6203 and Sacred Heart Church will again be sponsoring Lenten fish dinners on Friday, Feb. 19, 26, March 5, 12, 19 and 26. Dinners will be served in the school cafeteria, 149 South Plainfield Ave., from 5 to 7 p.m. Menu: fillet of fish (fried, broiled, parmesan), pasta (cheese ravioli, manicotti or linguini) or pizza; fresh garden salad, rice pilaf, French fries or macaroni and cheese, cole slaw, coffee, tea or cold drink, plus dessert. Take out available. Admission is \$8 for adults, \$7 for seniors and \$4 for children. Pay at the door. Stations of the Cross will be held in the church at 7 p.m.

High School Parent Conference

February 17

South Plainfield High School will hold their teacher/parent conference night on Wednesday, Feb. 17 from 6:30 to 8:30 p.m. Information maps will be available at Exit 1 and Exit 10 for your convenience.

High School Mid-Winter Concert

February 18

South Plainfield High School will hold their mid-winter concert on Thursday, Feb. 18 at 7 p.m. in the auditorium.

Charity Basketball Game at SPSHS

February 25

The Recreation Department along

with the COACHES C.A.R.E. organization are sponsoring a charity basketball game amongst the recreation head basketball coaches on Thursday, Feb. 25 at 7 p.m. at the high school.

Admittance: \$3 for adults, \$2 for any child wearing their recreation basketball shirt.

Comedy Show at Grant School

February 27

Grant School is holding a comedy night fundraiser on Friday, Feb. 27 at the Senior Center featuring national touring comedian Dave Reilly. Seats are limited—reserve now. Tickets are \$25 each. Show starts at 7:30 p.m. Bring your own food and drinks. Doors open at 6:30 p.m. All profits to be used for Stokes trip.

For tickets and information, call Debbie at (908) 227-7834, E-mail dpete1851@comcast.net or call Christine at (908) 705-4201.

Boy Scout Troop 125 Spaghetti Dinner

February 27

Boy Scout Troop 125 is hosting a spaghetti dinner at the VFW Post #6763, 155 Front St., on Saturday, Feb. 27 from 3 to 8 p.m. Menu includes: spaghetti and meatballs, salad, bread, drinks and dessert. Take out available. Price per person is \$5. The money raised will be used for summer camp.

For more information, call Maria at (908) 303-8314.

Project Graduation Auction/Raffle Tickets

March 6

The South Plainfield High School PTA will host its annual auction/raffle on Saturday, March 6, from 6 to 11 p.m. in the high school gym. All profits will go towards Project Graduation for the Class of 2010. The price per ticket is \$12.

For tickets, call Tracey Hartmann at (908) 755-4349. This event has sold out in past years, so please call as soon as possible for tickets.

Does your organization need publicity for an event? Submit it for publication in Events Around Town.

Email: spobservers@comcast.net

SENIOR CENTER Calendar

Coming Up.....

Feb. 18-Showboat Casino
April 25-27-Wheeling, WV
May 13-15-Washington, DC
June 7-10-Niagara Falls
(Call the senior center for more info)

MONDAYS

(Closed February 15 Presidents' Day)
Silver Sneakers 8:30 am
Crocheting 9:30-11:30 am
Yoga 10:30 am
Art Class 11:30 am

TUESDAYS

Bingo 10 am-2 pm
Ladies Group 10 am

Call (908) 754-1047 for more info or visit
www.southplainfieldnj.com

Senior Center is open daily 9 a.m.-4 p.m. Closed Saturdays and Sundays

WEDNESDAYS

Aerobics 8:45 am
Line Dancing 10 am
Computer 10 am, 11:30 am, 1 pm
Crocheting 1 pm
Tai Chi 2 pm

THURSDAYS

Active Seniors 8:30 am
Shopping Trip 9 am
Crafts Class 10 am
Computer 10 am, 11:30 am, 1 pm
Exercise Class 1:15 pm

FRIDAYS

(Closed February 12 Lincoln Birthday)
Bingo 10 am-2 pm

Daily Activities: Morning coffee, pool, cards, board games, computer classes, exercise, art, Tai Chi, yoga and crafts.
Lunch Served Monday-Friday.

— Out of Town —

Through the Night at Crossroads Theatre

Through February 21

A powerful and provocative play that brings to life an urban community—one male at a time, *Through the Night* will be presented at Crossroads Theatre, 7 Livingston Ave. in New Brunswick through Sunday, Feb. 21. Tickets: \$40-\$65.

For tickets and showtimes, call (732) 545-8100.

Middlesex East WOWs Open Dance

February 12

Middlesex East Widows Or Widowers, Carteret Chapter, will hold an open dance on Friday, Feb. 12 from 7:30 to 11:30 p.m. at The American Legion Hall, 1155 Roosevelt Ave. in Carteret. Live music and refreshments. Admission: \$10 members; \$12 guests.

For more information, call (732) 541-2174 or (908) 757-0515.

Steppin' Out Singles Dance Party

February 14

Steppin' Out Singles is holding a Valentine's Day and pre-holiday dance party on Sunday, Feb. 14 at 8 p.m. at the Woodbridge Hilton Grand Ballroom, 120 Wood Ave. South in Iselin. Ages 40 and up; proper attire required; no jeans or sneakers; \$15

admission.

For information, call the 24 hour hotline at (732) 656-1801.

Mardi Gras at Willow Grove Church

February 14

Willow Grove Church, 1961 Raritan Road in Scotch Plains, is hosting the fourth annual Mardi Gras Jazz Worship Service beginning at 10 a.m. A light brunch will follow the service.

RSVP by Thursday, Feb. 11 to (908) 232-5678 or by E-mail to office@willowgrovechurch.org.

Hydewood Park Baptist Evangelism

February 14-20

Hydewood Park Baptist Church, 100 Norwood Ave. in North Plainfield, will host a six-part series on evangelism towards Muslims and Hindu people groups beginning Sunday, Feb. 14 through Sunday, Feb. 20. Each session runs from 5-6 p.m. Free; no pre-registration required.

For more information, call (908) 754-6363.

Prodigal Foundation Pancake Breakfast

February 14

The Prodigal Foundation Inc., a non-profit organization that helps children affected by cancer throughout Middlesex County, will host a pancake breakfast and bake sale on Sunday, Feb. 14 from 8 to 11 a.m. at the Woodbridge Elks, 665 Rahway Ave. Tax-deductible tickets: adults/\$6, children ages 5-10/\$3, children under 5 are free.

For more information or to make a donation, call (732) 636-9200.

Autism Lecture

February 16

Autism: Recovery IS Possible, Two Hours That Will Change Your Child's Life will be presented on Tuesday, Feb. 16 at 6 p.m. at The Vitamin Shoppe, 1601 U.S. Hwy. 22W in Watchung. The lecture is free.

For more info and to register, visit www.autismnationwide.org.

Somerset Ostomy Association Meeting

February 16

The Ostomy Association of Somerset County will hold their next meeting on Tuesday, Feb. 16 at 7:30 p.m. The meeting will be held in conference rooms A&B at Somerset Medical Center, Rehill Ave. in Somerville.

An affiliate of the United Ostomy Associations of America, the OASC is a support group for ostomates and their families and loved ones. All are welcome to attend the meeting, along

Receive up to \$1,900 in
Rebates & Tax Credits!



NORTHERN
HEATING & COOLING

Commercial & Residential Air Conditioning & Heating
737 New Durham Road, Edison, NJ

COUPON
FREE ESTIMATE
Carrier 80%
High Efficiency Gas Furnace
Installed,
as low as
\$1799⁰⁰

732-906-8050

www.northernheatingcooling.com



THE
SALON
PROFESSIONAL
ACADEMY

www.tspsNewJersey.com

4985 Stelton Rd, South Plainfield, New Jersey 07080

PRESENT THIS AD TO RECEIVE

\$3 OFF
HAIRCUT

All services performed by supervised students. Expires 4/30/10

PRESENT THIS AD TO RECEIVE

\$5 OFF
FACIALS

All services performed by supervised students. Expires 4/30/10

PRESENT THIS AD TO RECEIVE

FREE MANICURE W/ A PEDICURE

All services performed by supervised students. Expires 4/30/10

ENDORSED BY REDKEN FOR
EXCELLENCE IN EDUCATION

REDKEN
5TH AVENUE NYC



with physicians, nurses, social workers and physical therapists. Refreshments will be served.

For further information, contact Ed Wheeler at (908) 534-7897.

Hunterdon Chamber Networking Breakfast

February 17

Hunterdon County Chamber of Commerce will hold a networking breakfast on Wednesday, Feb. 17 at 7:15-8:30 a.m. at Hampton Inn on Royal Road in Flemington. Continental breakfast, free admission, bring a friend. Call (908) 782-7115 to register or go online to www.hunterdonchamber.org.

Temple Shalom Pray 'N Play Service

February 20

Temple Shalom of Fanwood/Scotch Plains, Martine and LaGrande avenues in Fanwood, invites families with children ages four and under to an interactive Shabbat Pray 'N Play featuring music, maracas, puppets and parachutes. The 30-minute service begins at 10 a.m., followed by a free bagel brunch. Older siblings are welcome.

For more information, call (908) 889-4900, E-mail sholom@sholomnj.org or visit www.sholomnj.org.

Jewish Textile Demo And Lecture

February 21

The Jewish Textile Lecture and Demonstration has been rescheduled for Sunday, Feb. 21 at 3 p.m. at the Plainsboro Municipal Building, 641 in Plainsboro. Free of charge; advance registration is required.

For more information and to register call (732) 745-4489.



MOHN'S FLORIST
2325 plainfield ave., so plainfield
908 561 2808
www.mohnsflorist.com

- weddings and receptions
- sympathy designs • everyday floral gifts
- fruit, gourmet, gift baskets
- dish gardens • balloon bouquets

let us create anything you can imagine...

southplainfieldpeople

Milestones



Ashley Bishop

Ashley Bishop Graduates from Rowan University

Ashley Bishop graduated from Rowan University on May 15 earning a Bachelor of Arts Degree in Law and Justice. A 2005 graduate of South Plainfield High School, Ashley is employed by an Edison law firm.

She is the daughter of Scot and Debra Bishop.

Northeastern University Fall Semester Dean's List

Northeastern University is pleased to recognize Christopher Pennisi, who is majoring in criminal justice, Alison Smith who is majoring in English and Kathleen Sullivan, who is majoring in chemistry. All were recently named to the University's Dean's List for the Fall semester 2009, which ended in December 2009.

To achieve the dean's list distinction, students must carry a full program of

at least four courses, have a quality point average of 3.25 or greater out of a possible 4.0 and carry no single grade lower than a C during the course of their college career. Each student receives a letter of commendation and congratulation from their college dean.

Founded in 1898, Northeastern University is a private research university located in the heart of Boston. Northeastern is a leader in interdis-

Megan Boyle Named to Dean's List At Fairleigh Dickinson University

Megan Boyle, daughter of Robert and Debbie Boyle of South Plainfield, received commendations from Maxwell Becton College of Arts and Sciences at Fairleigh Dickinson University where she has earned the distinction of being place on the academic dean's list by Geoffrey S. Weinman, dean for the Fall 2009 semester.

plinary research, urban engagement, and the integration of classroom learning with real-world experience. The university's distinctive cooperative education program, where students alternate semesters of full-time study with semesters of paid work in fields relevant to their professional interests and major, is one of the largest and most innovative in the world. The University offers a comprehensive range of undergraduate and graduate programs leading to degrees through the doctorate in six undergraduate colleges, eight graduate schools, and two part-time divisions.



Amanda Veinott

Honor Society, Omicron Delta Kappa. ODK's five qualifications of membership include "exemplary character, responsible leadership and service in campus or community life, superior scholarship, genuine fellowship, and consecration to democratic ideals," according to ODK.org.

Amanda, a 2006 graduate of South Plainfield High School, will graduate from Christopher Newport University in May 2010. She is the daughter of George and Maureen Veinott,

For more information, please visit www.northeastern.edu.

Journey Through Grief Bereavement Lecture Series

Center For Hope Hospice & Palliative Care will offer a four week lecture series titled "Journey Through Grief" Tuesday evenings, March 2-23 from 7 to 9 p.m. The lecture series will be held at Center For Hope Hospice & Palliative Care, Peter M. Shields Administration Building, 1900 Raritan Rd. in Scotch Plains.

The Journey Through Grief program addresses issues common to death and bereavement. Topics include the Tasks of Mourning, Anger and Guilt, and Coping and Taking Care of Yourself. In addition, each week a speaker will share their story of loss and how they have learned to cope and continue on.

Pre-registration is not required and there is no cost for participants. The series is opened to the public. Guests are invited to bring family members and friends. There will be refreshments and fellowship after the lecture each week.

For further information or directions, please call Acadia House, the center's bereavement center, at (908) 654-3711.

2010 Cultural Arts Commission Meetings

The regular meetings of the South Plainfield Cultural Arts Commission of South Plainfield are held on the third Tuesday of the month at 7:30 p.m., P.A.L. Building, located at 1250 Maple Ave. in the conference room. The meeting is open to the public.

The South Plainfield Cultural Arts Commission 2010 Public Meetings will be held on the following dates: Feb. 16, March 16, April 20, May 18, June 15, Sept. 21, Oct. 19, Nov. 16 and Dec. 21.

All dates are subject to change or cancellation.

Sacred Heart Church

149 South Plainfield Ave.
South Plainfield, NJ

Rev. John Paul Alvarado, Pastor

Mass Schedule:

Saturday Mass 9:00 a.m., 5:00 p.m.

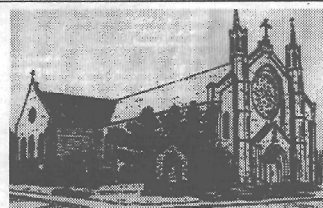
Sunday 9:00, 11:30 a.m.

Daily 9:00 a.m. Tuesday, Wednesday, Friday, Saturday

7:00 p.m. Monday (Church), Thursday (Parish Center Chapel)

Holy Days 6:30 a.m., 9:00 a.m., 7:00 p.m.

Sacrament of Reconciliation-Saturday 10-11:30 a.m. and at other times by appointment



Send Your Events to: spobserver@comcast.net

For information on how to submit your event,
visit our Web site at www.spobserver.com



Brenda Vallecilla

BRENDA VALLECILLA Attorney At Law

300 Maple Ave, Suite 201 • South Plainfield
908-756-2173

Wills/Real Estate/Traffic Tickets/Personal Injury
Divorce/Child Support/Name Changes

Mention this ad for FREE consultation

Call for an appointment; Evenings and Saturdays available



The Observer is read by more South Plainfielders than any other newspaper.

It's no surprise... we've been delivering local news since 1997. And it's a great reason to advertise your business here.



Call (908) 668-0010 for advertising information.



Summer Camp Special



Special 7 am-4 pm \$775 per month
Must be entering 1st, 2nd or 3rd Grade
Must Register for July & August
Must Pick Up by 4 pm (late care available for a fee).

We also offer 2, 3, 4 & 5 year old programs

1615 Clinton Avenue, South Plainfield • 908-753-4477

NEWS Suburban Woman's Club

The Suburban Woman's Club of South Plainfield met on February 4 and President Lucy Hudson announced plans for members to attend the New Jersey State Federation of Women's Clubs College District Arts Performing Day to be held on Thursday, March 11, hosted by the Flemington Woman's Club and the NJSEWC Public Affairs Day, to be held on Monday, March 22 at the Battleground Country Club.

The Wednesday afternoon Chair Yoga class continues. It is taught by Cristine Cancela with about 10 members enjoying the activity.

The club's nominating committee was formed and will meet at Chairman Frieda Walker's home to arrive at nominations for the coming year's slate of officers.

Diane Gallo will chair the candy/cookie project to assemble home baked cookies for delivery on St. Patrick's Day to the local Keystone Community residents.

The General Federation requested that clubs participate in its donation for Haiti relief. President Hudson entertained a motion, which was

made and accepted to send \$25 to the fund.

Special State Project Chairman Natalie Bergen announced that the committee held a meeting on February 11 to discuss arrangements for the fashion show luncheon to be held at the South Plainfield Senior Center on Sunday, April 25 for the benefit of Autism New Jersey and the club's scholarship fund. The fashions will be provided by The Dress Barn of South Plainfield.

Longtime member June Flannery was nominated to be placed on the New Jersey State Federation Honor Roll and will join the honorees at the 116th annual State Convention in May at the Trump Plaza Hotel & Casino in Atlantic City.

The afternoon's program was an entertaining talk by club member Mary Fran Opp entitled, "A Portrait of a Marriage" describing the courtship and family events of Abraham and Mary Lincoln.

Anyone interested in learning more about the club and its activities may call the membership chairman at (732) 549-9633.

The Salon Professional Academy New Jersey Offers Discounted Services

The Salon Professional Academy (TSPA), an innovative training center and the only cosmetology schools in the world endorsed by Redken 5th Avenue NYC for excellence in education, is now open to the public for premium spa and salon services at discounted prices. All services are performed by students under the supervision of licensed professional educators in a leading-edge facility.

TSPA New Jersey, owned by John, Lori and Sean Suckles of the JonLori Salon and Donna and Osiris Hernandez of the Planet Hair Salon, opened to students in the fall of 2009. The academy provides hands on-training in a real world setting where students learn superior techniques in cosmetology, esthetics, as well as educator training programs, along with critical business building skills necessary for a successful career in the industry. This well rounded education enables them to become certified in the program of their choice as well as expand into many of the other fields available within the industry including photo and movie stylist, platform artist, salon manager, salon owner, distributor, or cosmetology educator.

"Sharing my passion and experience



At the Fall 2009 grand opening of The Salon Professional Academy New Jersey in Hadley Center: (L-R) Osiris Hernandez, John Suckles, Mayor Charles Butrico, Lori Suckles, Donna Hernandez and Sean Suckles.

with future professionals has been very rewarding," said John Suckles, president of TSPA New Jersey. "And now being able to watch our students share their own expertise and creativity with the general public, build client relationships, and shape their own success, adds to that satisfaction. I'm proud to be a part of it."

For more information about the programs and services offered by TSPA New Jersey, visit their Web site at www.tspanewjersey.com.

The Salon Professional Academy maximizes the artistic potential of students through programs that teach not only the latest techniques, but also proven business strategies. This superior education prepares students to become future industry leaders. The Salon Professional Academy has 39 locations throughout the United States; each privately owned and operated, featuring quality salon and spa services. For more information, visit www.theSalonProfessionalAcademy.com.

School Board Candidacy Information

The South Plainfield School District has information available for citizens interested in running for a vacant seat on the Board of Education.

The South Plainfield Board of Education will have three (3) vacancies in the April 20 annual school election, according to Richard A. Guarini, spokesperson for the BOE. A full term on the school board runs for three years.

Candidates must file a nominating petition with the local school board in order to get their name on the ballot for the annual school election. The current deadline to submit the nominating petition is 4 p.m. on Monday, March 1. The election is scheduled for Tuesday, April 20.

Prospective school board candidates can obtain a "School Board Candidate Kit" online at www.njsba.org. Published by the New Jersey School Boards Association, the School Board Candidate Kit includes a nominating petition, information about legal qualifications for school board candidacy and the role of the school board member. Information about the New Jersey School Ethics Act and important dates in the school election process are also included in the kit.

"One of the most meaningful contributions that a citizen can make to their community is serving on their local board of education," said Harry J. Delgado, NJSBA president. "I encourage all interested citizens to consider school board membership. It doesn't require a degree in education, or a background in politics. However, it does require a sincere interest in the community, its children, and their education."

To find out what's happening in South Plainfield, visit the borough's Web site at southplainfieldnj.com

Sale

PRESIDENTS' DAY

MONDAY, FEBRUARY 15

50% OFF

ALL MERCHANDISE

NOT VALID WITH ANY OTHER COUPONS, DISCOUNTS, OR SPECIAL OFFERS

UNIQUE THRIFT STORE

SOUTH PLAINFIELD • 698 Oak Tree Rd., • 908-822-1600

ELIZABETH • 116 Broad St., • 908-994-0600

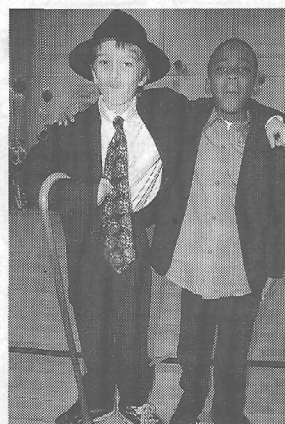
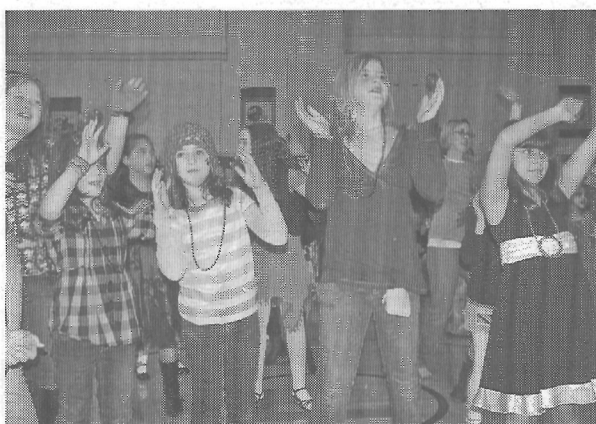
WATCHUNG • 1581 US Hwy. 22 • 908-822-0005

PATERSON • 188 Main St., • 973-742-2020

UNION CITY • Kennedy Center, 3196 Kennedy Blvd. • 201-867-7077

UNION • Union Plaza Shopping Center, 2485 US Highway 22 • 908-688-6822

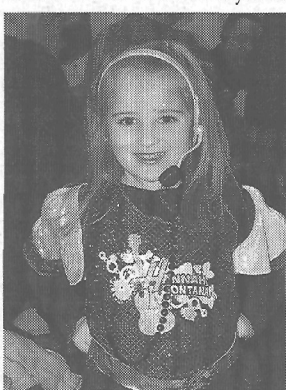
MONDAY-SATURDAY 10AM-8PM, SUNDAY 11AM-5PM



Students Star in Franklin's Hollywood Extravaganza

By Patricia Abbott

The stars were out at Franklin School on January 29. The biggest and brightest shone during the school's annual dance. This year's theme was "A Hollywood Extravaganza" and the aforementioned stars were students dressed as their favorite Hollywood



star. Fans and stars alike followed the red 'carpet' into the gym, which had been transformed into a world of glitter and high fashion.

The evening had all the necessary elements of a posh Hollywood party; food, music and fun. A deejay kept the crowd on their toes. When they tired of the dance floor, they feasted on a large variety of goodies and beverages including a make-your-own sundae.

There were also activities along the sides of the gym which included make-up, tattoos, face painting and a make-a-picture frame table. The children had the opportunity to pose for a photo to fill their handmade frames.

On hand were famous faces ranging from Charlie Chaplin to Hannah Montana. Montana and Michael Jackson seemed to be everywhere. One young lady sporting her Hannah costume said her real name was Amy, but the kindergartener was unsure of her last name and its spelling, or perhaps she was just hiding her real identity

from curious fans. Batman and Superman dashed about the room and Indiana Jones found plenty of adventure. A bevy of up and coming starlets and actors enjoyed rubbing elbows with the rich and famous. A world famous director was also on hand; she had a distinct resemblance to school Principal Ellen Decker-Loray. There were also several sightings of the King himself, Elvis Presley.

PTO President Barbra Rhoads was kept busy selling tickets. The turn out for the evening was amazing. Two hundred and eight guests pre-registered and there were 85 walk-ins. Among those mingling with the stars were Board of Education President Jim Giannakis and board member Debbie Boyle.

The festive event was organized by PTO members Antoinetta Dente and Georgia Lambert. This is their third dance. They previously orga-

nized a 70s disco dance in 2009 and a 50s dance celebrating the school's anniversary in 2008. Despite budget cuts due to the economy, Antoinetta and Georgia always find creative ways to keep the party going. The gym is always colorfully decorated according to their theme. This year each family attending was asked to supply a snack or dish of goodies. The laughter and smiling faces are proof of the hard work these two women put into creating a perfect evening for the students and families.



Students Sought For County Youth Conservation Corps

Applications are being accepted for the Middlesex County Youth Conservation Corps, whose mission is "to protect and preserve natural areas from misuse, polluters and the forces of nature" at the 7,000 acres of open space owned and maintained by Middlesex County.

Conservation Corps crew members earn \$8.50 per hour and will work Saturdays from March 27 to June 12. Work will primarily take place at county open spaces in Old Bridge, Monroe and South Brunswick. Students age 16 and over are encouraged to apply.

"Our Youth Conservation Corps members continue to be an integral part of our efforts to maintain beautiful, open lands for our residents to enjoy," said Freeholder Stephen J. "Pete" Dalina, chair of the County's Parks and Recreation Committee.

Activities include trail building, litter clean-up, invasive species removal and wildlife habitat improvements. Applicants should be enthusiastic, self motivated and willing to work and learn as a part of a team. Also, applicants must have the capacity to walk several miles and stand for extended periods of time, a willingness to get dirty, to work outdoors in various weather conditions and the ability to use various hand tools.

Space is limited. Interested applicants should send a cover letter and application for employment to: Valerie Lysenko, Middlesex County Department of Parks and Recreation, P.O. Box 661, New Brunswick, N.J. 08903. Applications can be downloaded at www.co.middlesex.nj.us/personnel/index.asp and must be received by Monday, Feb. 22.

A complete job description can be found at the Middlesex County Department of Parks and Recreation Web site, www.co.middlesex.nj.us/parks/recreation/index.asp.

For more information, call Valerie Lysenko at (732) 745-3064.

Your Health MATTERS

A Source for Medical/Dental/ Wellness Professionals

Advanced Chiropractic & Wellness Center



Dr. Norayr Ozbalik, DC
16 years experience

- Neck pain, back pain, headaches, numbness, tingling, weakness & pain in arms and legs • Fibromyalgia • Sciatica
- Personal Injury • Bulging and herniated discs
- Convenient hours Mon.-Sat. • Walk-ins Welcome

904 Oak Tree Avenue, Suite O, South Plainfield

(908) 561-1777 Fax: 908-561-9711

Most major medical insurance & Medicare accepted

DURHAM DENTAL CENTER

COSMETIC & GENERAL DENTISTRY

281 Durham Avenue, South Plainfield (908) 791-0900

EXAM & CLEANING
X-RAYS

ONLY \$79.99
REGULAR \$255

DURHAM DENTAL CENTER

MAY NOT BE COMBINED WITH ANY OTHER COUPONS OR DISCOUNTS. EXPIRES 2-19-2010

Dr. Loay Deifallah, DDS • Most Insurance Accepted • Se Habla Espanol

ZOOM ONLY
IN OFFICE BLEACHING

ONLY \$199.99
REGULAR \$599

DURHAM DENTAL CENTER

MAY NOT BE COMBINED WITH ANY OTHER COUPONS OR DISCOUNTS. EXPIRES 2-19-2010

policereport

• On Jan. 26 Olabamiji C. Olabini, 30, of Plainfield was arrested for driving on a suspended license and an outstanding warrant.

• On Jan. 28 Ian J. Wallace-Bristol, 20, of South Plainfield was arrested for hindering apprehension, driving while intoxicated, driving on a suspended license and failure to inspect.

• A Desepio Avenue resident reported finding pry marks on their rear sliding glass door. No entry was gained.

• On Feb. 1 Holly Tennessee, 30, of North Plainfield was arrested for failure to inspect and an outstanding warrant.

Looking for QUICK CASH
in this difficult economy?
Clean out your clutter for cash!

To place your
classified ad
call 908-668-0010.

FRONT STREET FARMERS MARKET

214 Front Street,
South Plainfield, NJ
at the end of Oak Tree Ave,
next to Sherban's Diner.
908-941-5598
Open 7 Days.

Remember your Valentine! With our fresh cut flowers, a fruit or gift basket.

Bananas	Haas Avocados	Fresh Baked 7" Fruit Pies	Made fresh daily! Mozzarella	Every Tuesday 10% Senior Citizen Discount!
49¢ lb.	79¢ ea.	\$5.95 ea.	\$5.99 lb.	

Boar's Head Combo 2/3 lb. Roast Beef 1/3 lb. Amer. Cheese	Boar's Head Bologna	Boar's Head Muenster Cheese	5 lb. bag Potatoes	3 lb. bag Onions
\$5.99 lb.	\$3.99 lb.	\$3.99 lb.	99¢	99¢

Project Graduation Auction/Raffle Donations/Volunteers Still Needed

This year will mark the South Plainfield High School PTA's 22nd year of providing our graduating seniors with a Project Graduation celebration. To help support this important event the SPHS PTA is sponsoring our annual auction/raffle fundraiser to be held on Saturday, March 6, from 7 to 11 p.m. (doors open at 6 p.m.) at high school. All proceeds will go towards Project Graduation. To obtain tickets please see below for details.

It is not too late to donate! Together we can make this event a success for our graduating seniors with the help and support of SPHS families, especially senior class families, our South Plainfield community/educational organizations and our local businesses. Please support this worthwhile cause by making a donation. Donations can be in the form of a gift card, a single gift item, a theme gift basket or it can be a monetary donation.

Monetary donations can be mailed to: South Plainfield High School, 200 Lake St., South Plainfield, attn: SPHS PTA. Please make checks payable to: SPHS PTA-Project Graduation.

Donations need to be received ASAP in order to be used for our auction. We are in need of donations if we are to make project graduation happen for the SPHS Class of 2010. All families, businesses and community/educational organizations will be acknowledged in our program for your generous contributions.

Please ask the business or corporation you work for if they will make a contribution or if you know of someone who can obtain a donation from a business or corporation, please ask them for their help.

To arrange for items to be picked up directly from your home or business, or to be an auction volunteer (set up 12 noon to 3 p.m., ticket sales (throughout the evening), clean-up

11 p.m. to midnight) or to be a driver to help move auction prizes from the homes where they are being stored to SPHS 11:30 a.m., please contact the high school's main office at (908) 754-4620, ext. 248 or Sharon Miller at (908) 754-6461.

For ticket info please contact Tracey Hartmann at (908) 755-4349. Please provide her with your name, phone number and the number of people you would like at your table.

Thank you all for your help. Please submit all solicitations sheets as well as any donations you may have received from local businesses to Mary Cargill at (908) 755-9717 no later than Wednesday, Feb 17.

We are in need of empty wicker baskets (in good condition). If you have any large baskets, please contact Mary Cargill or they can be dropped off at the SPHS Main Office.

SPHS PARENT/TEACHER CONFERENCES—Wednesday, Feb. 17 starting at 6:30 p.m. Tickets will be on sale and donations will be accepted. Please visit the PTA table outside of the cafeteria.

PTA MEETING—Thursday, Feb. 25 at 7 p.m. in the SPHS Tiger's Den. This is our last meeting before the auction. It is important for all volunteers to try to attend from 7 p.m. to 7:30 p.m.

The SPHS Class of 2010, the SPHS PTA and the SPHS sincerely appreciate your support! Together we can make this event a success for our graduating seniors. Together we can make a difference!

Submitted By Sharon Miller,
President SPHS PTA

Get Ready for Spring Tree Planting

Now is the perfect time to start thinking about the spring planting season, and the Arbor Day Foundation is offering an ideal way for everyone to plant trees when the weather turns warm.

Every person from New Jersey who joins the Arbor Day Foundation in February will receive 10 free Colorado blue spruce trees.

The 10 free Colorado blue spruce trees are part of the nonprofit Foundation's Trees for America campaign.

"Colorado blue spruces will give year-round beauty to homes in New

Jersey with their silver blue-green color and attractive conical shape," said John Rosenow, chief executive of the Arbor Day Foundation. "They will also add to the proud heritage of New Jersey's 155 Tree City USA communities. For more than 30 years, Tree City USA has supported community forestry across New Jersey, and planting these graceful trees will add to this vital tree-planting tradition."

The trees will be shipped postpaid at the right time for planting between March 1 and May 31 with enclosed planting instructions. The 6- to 12-inch trees are guaranteed to grow, or they will be replaced free of charge.

Members also receive a subscription to the Foundation's colorful bi-monthly publication, Arbor Day, and The Tree Book with information about tree planting and care.

To become a member of the Foundation and receive the free trees, send a \$10 contribution to ten free Colorado Blue Spruce Trees, Arbor Day Foundation, 100 Arbor Ave., Nebraska City, Neb. 68410, by February 26, or go to www.arborday.org/ February.

Recreation Notes

- Registrations are underway for Ponytail Softball and Tball/Teener Ball.

- The Recreation Department along with the COACHES C.A.R.E organization are sponsoring a charity basketball game amongst the Recreation head basketball coaches on Thursday, Feb. 25 at 7 p.m. at the high school. Admittance is \$3 for adults, \$2 for any child in their Recreation basketball shirt.

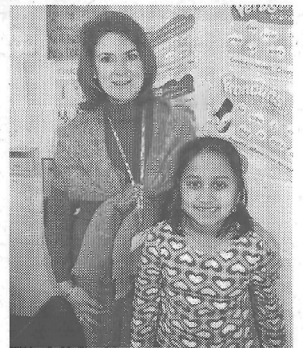
JUNIOR JOURNALIST

Aishwarya Rajesh Named Junior Journalist

Roosevelt School third grader Aishwarya Rajesh has been named a winner in the Junior Journalist contest. Her submission of the limerick, "School Grade," has earned her a dinner for her family courtesy of Hometown Heros.

Students should submit their original written works to their teachers, school principal or the Observer office at 1110 Hamilton Blvd.

Winners will receive a catered dinner for their families from Hometown Heros and will be honored at a year-end banquet in May. Junior Journalists also have the opportunity to win the Ruth Kurland Memorial \$1,000 savings bond which will be awarded at the banquet.



Junior Journalist Aishwarya Rajesh with teacher Kathy Maher.

For more information, call the Observer at (908) 668-0010.

School Grade (Limerick)

By Aishwarya Rajesh

I'm worried about getting a bad grade.
I'm not happy, I'm really afraid.
My test fell on the floor.
I looked and got a good grade.
For this test there's nothing I'd trade.

Where you are always treated like one of the family

Hair Salon
Carousel

Come in & enjoy
\$14 HAIRCUTS

& ALL OUR
NEWLY REDUCED
PRICES

CUTS FOR KIDS \$5 + AGE

Treat yourself....

Complimentary Nail Art w/ Manicure \$16
or
Complimentary Foot Mask w/ Pedicure \$19

Love Your Pet's Teeth DENTAL FAIR

Sunday, February 14 • 2-4 p.m.

Plainfield Animal Hospital

You're Invited!!



Giveaways!
Contests! Tours!
Tooth Brushing



Demos!
Door Prizes!
Refreshments!

2215 Park Avenue, South Plainfield

RSVP: by February 10, 2010

908-755-2428

www.plainfieldanimalhospital.com

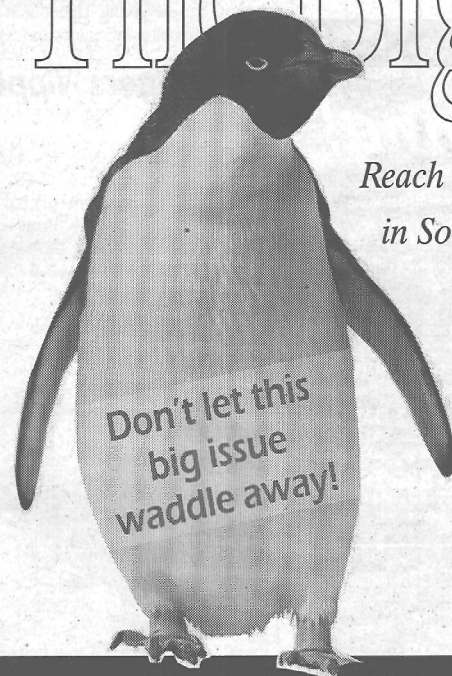
LEARN ABOUT THE IMPORTANCE OF PET DENTAL HEALTH!

Bring your pet for a **FREE** Dental Examination!

Good Looks and Healthy Teeth...
...Who says you can't have it all?

KEEP COOL... THERE'S STILL TIME.

The Big Issue



Reach every household and business
in South Plainfield in the March 26
issue of the Observer.

South Plainfield
Observer
Your #1 Source for South Plainfield news.

To reserve your space,
call (908) 668-0010.

Reserve space by March 5.

Don't wait too long... because this opportunity will waddle away.

Sports

By Gary Lampasona

JUNIOR BASEBALL CLUB NOTES

Snow, snow, snow... tired of shoveling it? Tired of hearing about it? Let's think about warm, sunny spring days—on the ballfield! As we struggle with the cold winter, activity is vigorous at the baseball club, as the spring season is not far away.

Registration: Registration is still open. If you still want to sign your child up for the spring season, call the baseball club at (908) 754-2090 or download the registration form from the Web site and mail it in. New players must add the work bond fee. At this time a \$20 late fee will be added. Hurry, time is running out and once openings are filled, your child will go on a waiting list.

Managers: All managers have been notified of their selection for the season. Please remember that if not selected, managers are always looking for good assistant coaches. The managers' meetings will be held the week of February 22: Small Fry C on Monday, Feb. 22; Small Fry B on Tuesday, Feb. 23 and Small Fry A on Wednesday, Feb. 24; all at 7:30 p.m. in the SPJBC clubhouse. Be advised that all managers and coaches must have a 2009 SPJBC Membership Card and be Rutgers certified.

Umpire Classes: Classes will begin on Tuesday, Feb. 16. Umpires must be 13 years or older and must attend all classes on February 16, 18, 23 and 25 and March 3. The test is on March 6. If you are interested, please call the baseball club to register.



Player Evaluations

Evaluations: Evaluations will be held for all SFC and SFB players at the PAL building on Saturday, March 6 beginning at 8:30 a.m. Post-cards will be mailed with your child's specific time to report. Attendance is important, because these evaluations allow managers and coaches to select competitive teams, which leads to more fun for all players and parents.

The Women's Auxiliary will be on hand to support the club and offer the sale of SPJBC clothing.

Rutgers Certification Class: There will only be one class this season and it will be held on Thursday, March 18 in the SPJBC clubhouse beginning at 6:30 p.m. It's being held jointly with South Plainfield Recreation. The fee will be waived for South Plainfield residents.

The SPJBC is supporting the South Plainfield High School baseball team by sponsoring their baseball game at TD Bank Ballpark, the home of the Somerset Patriots. The date is Sunday, April 18; the opponent is JFK (Iselin) and the time is 11 a.m. Tickets will be made available; details to come.

Volunteers Needed: We are looking for some committee chairpersons and directors. Openings include C League director, scholarship chairman, snack stand captains and tournament directors. Remember our organization runs on people volunteering their time. Come on out and give us a hand and get involved. It cannot happen without you. If you are interested, please call the clubhouse and leave a message.

Opening Day: On Saturday, April 10 we will kick off the spring season with a parade and ceremonies. The season's initial games will begin after the festivities. If we dig a little deep, we can smell the grass growing already.

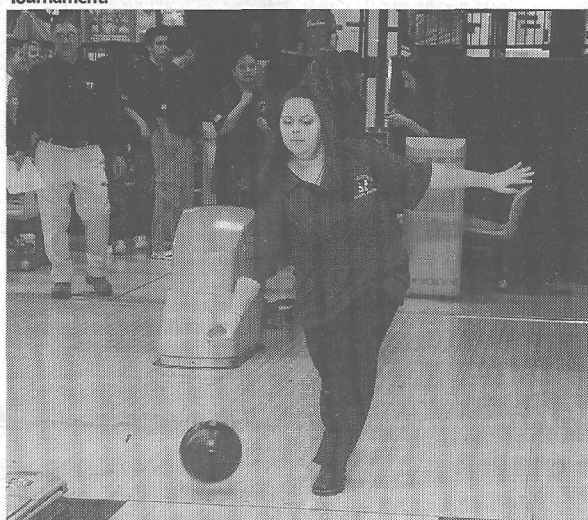
You can find all this and more information on our Web site: www.leagueup.com/spjbc.

SPHS Bowling

By Ralph Fech



Freshman Tom Riccardi scorched the lanes with a 225 game in the GMC playoff loss to Edison and a 236 game in the Prodigal High School Masters Tournament.



Junior Stephanie Sherwood rolled a 203 game enroute to a 488 set in the Prodigal High School Masters Tournament held at Woodbridge Center Lanes.

Tiger Bowlers Upset Bid Falls Short

Seeded		
22	SPHS	638-896
11	Edison	918-959

In GMC playoff action, after a slow start, the boys bowling team rolled its best game of the season and threw a scare into powerhouse Edison before being edged by the high flying Eagles. Freshman Tom Riccardi took scoring honors for the young Tigers with games of 166 and 225. Teammate Robert Benwell tossed a 225 game and Kyle O'Keefe a 154.

Lady Tigers Nipped by New Brunswick

Seeded		
21	SPHS	642-645-583
12	New Brunswick	691-583-632

The girls' bowling team suffered a third game meltdown and lost a thriller as they were nipped by New Brunswick. Nikki Disch 165, Michelle Hernandez 143 and Rebecca Moskal 145 led the Lady Tigers in their upset bid.

RECREATION WRESTLING

By Joe Sacco

Rec Wrestlers On a Roll

The South Plainfield Recreation Wrestling Team continued its winning ways with recent wins over Central Jersey rival Cranford and Raritan Valley opponents Somerville and Bound Brook. The Central Jersey League team improved to 12-0 with a thrilling 39-23 win over Cranford.

The Tigers won three overtime matches to secure the win. Winning by pin was Jake Hoffman and Dion Pender. Winning by decision was Anthony White, Tommy Fierro, Ryan Duhamel, Jake Giordano, Jeff Plungis, Desmond Santos and Christian Gonzalez while Danny Hedden received a forfeit. The Tigers will try to finish the season undefeated next Thursday at home when they face Kenilworth and Union.

The Raritan Valley team improved to 7-0 with a 72-23 win over Somerville and a 73-18 win over Bound Brook. Leading the way with two pins each was Jake DelVecchio, David Loniewski, Jacob Painton and Michael Marrero. Joe Sacco added a pin and a technical fall, Alex Amato a pin and a decision, Kyle Davisson a pin and a forfeit, George Pittenger a pin and a decision. Nick Difrancesco and Ben Lundy each had two forfeits while Connor Adams, Ryan Stankin, Nick Scalera and Zack DelVecchio added a pin each.

At the state qualifier in North Hunterdon, the young Tigers had plenty to celebrate. Danny Hedden and Tommy Fierro led the way with first place finishes. Jeff Plungis and Christian Gonzalez won silver for second place, Joe Heilmann placed third for his ticket to the state tournament and Jake Giordano placed fourth.

Adult Ball Players Wanted

Adult baseball players and teams wanted for the Amateur Baseball Association of NJ. The ABA is the premier adult men's (18 and over) recreational baseball league in New Jersey. We are also the fastest growing league in Northern and Central New Jersey with 160+ teams in 2009. In 2010 we will again have multiple wood and metal skill level leagues.

Included in our fees are our strong customer service and flexible master scheduling, a large player pool, seven dozen Wilson baseballs, field insurance, accidental medical insurance, equipment discounts, All Star Game and jackets for league winners and AllStar-TeamStats.com/aba for stats and schedules.

For more details please visit: AllStarTeamStats.com/aba or E-mail NJBaseball4all@aol.com or call Jason at (201) 873-3349.

To find out what's happening in South Plainfield, visit the borough's Web site at southplainfieldnj.com

Looking for QUICK CASH in this difficult economy? Clean out your clutter for cash! To place your classified ad call 908-668-0010.

Image is Everything!

15% OFF ANY JOB Over \$2,500 or more Sign up up now for 2010 service

Full maintenance contracts. New customers only. Choose any pattern & any color on all patios. drivers and retaining contract signed by 2/19/10. Must bring in ad. Cannot combine savings.

NEW IMAGE Landscaping & Lawn Care Over 20 Years Experience

Come & See Our New Displays

Full Service Lawn Maintenance Spring/Fall Cleanup & Shrub Trimming Cutting/Mulching Lawn Renovation Grading, Seeding, Sod Decorative Landscape-Retaining Walls Pavers, Walkways, Patios Decorative Stone-Drainage

OPEN 7 DAYS Mon-Fri 7am-5:30pm Sat 7am-3:30pm, Sun 8am-2pm

908-822-1000 email: newimagescott@yahoo.com delivery available ALL MAJOR CREDIT CARDS ACCEPTED

LANDSCAPING SUPPLIES & NURSERY

- Shrubs
- Red, Black, Tan Playground Mulch & Root Mulch
- Topsoil Seed, Erosion Products, Weed Mat, River Red Stone & Stone Dust
- Large Selection of Small Engine Parts & Landscaping Supplies & More

NICOLOCK PAVERS & RETAINING WALLS Contractors Welcome FULLY INSURED / FREE ESTIMATES We Can Help You Do It Yourself or We Can Do It For You

Come Visit Us at 2801 Hamilton Blvd. South Plainfield

Junior Journalist 2009-2010

Congratulations Calista!

Charlie and Debbie Kurland from Hometown Heros deliver dinner to Junior Journalist winner Calista Modernel, pictured with her dad, Eric and mom, Dianne.

Sports



Dontae Johnson, Pennington Athletic Director and Football Coach Jerry Eure Jr., and mom Holli Garner.

Dontae Johnson Signs NCAA National Letter of Intent

Dontae Johnson of South Plainfield, a senior at Pennington School, signed a NCAA National Letter of Intent to play football for North

Carolina State, a Division I university.

Dontae is the son of Holli Garner of South Plainfield.

From The South Plainfield Police Department BY SERGEANT WAYNE DIANA FOR YOUR INFORMATION

This week the police department reminds all property owners in town of the Borough ordinance requiring the removal of snow and ice from sidewalks. Borough Ordinance #166-1 states:

(a) "The owner or owners, tenant or tenants of lands abutting or bordering upon the sidewalks of public streets, avenues and highways of the Borough of South Plainfield shall remove all ice and snow from that part of said sidewalks lying in front of their respective premises which is paved with flagging, broken stone or other artificial covering within twelve hours of daylight after the same shall be formed or fall thereon." In simple terms, this means that ice and snow must be removed from the public sidewalk in front of your home or business within 12 hours of daylight after it snows.

(b) "The owner of any building shall remove all snow and ice from the driveways and parking lots of the premises and from the walkways between the public sidewalks, parking lots or driveways and the entrances to the buildings within twelve hours of daylight after the snow or ice has fallen or

formed thereon."

(c) "Snow or ice shall not be deposited or moved to any public street, avenue, highway or sidewalk."

Failure to comply with this ordinance may result in the issuance of a Borough Ordinance Summons, which may require a Municipal Court appearance and could result in a fine. Further failure to comply could result in removal of the ice or snow by the borough at the property owner's expense.

CONTACT We Care to Hold Volunteer Training Class

CONTACT We Care, Inc., the 24-hour caring and crisis hotline voted best statewide volunteer organization by the New Jersey Governor's Office of Volunteerism, will begin its comprehensive 36-hour volunteer training class on Wednesday, Feb. 17 from 7-10 p.m. at the First Baptist Church, 170 Elm St. in Westfield. The class will meet weekly until mid-May.

Experts in active listening, grief recovery, mental health issues, spirituality, and suicide prevention will join with CONTACT's professional staff to conduct the training.

"Our recent award from the governor recognizes CONTACT's commitment to providing an enriched, rewarding volunteer opportunity," said

David Owens, executive director. "We also offer volunteers the opportunity to work directly with individuals in need. To be able to have this one-on-one direct connection is a unique and rewarding volunteer opportunity."

CONTACT's training is designed to prepare prospective volunteers for the wide variety of needs and situations they will encounter on the phone line," said Sue Pasano, CONTACT's director of training. "The highly interactive training includes numerous practice sessions to prepare the volunteers," she said.

"We have been told time and again how valuable CONTACT's volunteer training is," said Owens. "The active listening skills people learn help

them in all areas of their lives—not just on the hotline."

There is a \$50 fee to cover the cost of training materials.

For more information on becoming a CONTACT We Care volunteer and making a difference in people's lives by listening actively, call (908) 301-1899 or visit the organization's Web site at www.contactwecare.org.

Please patronize our
advertisers. They allow
us to bring you the best
of South Plainfield!

Obituaries

Beatrice Knutelski (Oset), 87

Beatrice Knutelski (Oset) died on Thursday, Feb. 4 at JFK Medical Center in Edison.

Born in Dickson City, Pa. to her late parents John and Anna Oset, Beatrice had lived in Newark, Iselin and most recently, South Plainfield.

She worked as a switchboard operator for St. Mary's Hospital formerly of Orange and was an avid quilter and she enjoyed traveling.

She was a member of Our Lady of Czestochowa RC Church in South Plainfield.

She is predeceased by her husband, Walter "George" Knutelski, and by three sisters.

She leaves behind two sons, Joseph (Joann) of Florida and Ronald (Maureen) of Hillside; three grand-

daughters, Laura Knutelski, Janice Campos (Paul) and Shannon Perez (Leo); four great-grandsons, Jared and Colin Campos and Antonio and Alexander Perez; a brother, Walter (Mary Ann) and a sister, Irene Oset. She will be missed by many extended family and friends, especially those of the Kiddie Keep Will Camp of Edison.

Funeral services were held at McCriskin-Gustafson Home For Funerals.

Michael M. Jalali, MD, 78

Michael M. Jalali, MD died on Sunday, Jan. 31 at JFK Hartwyck at Oak Tree in Edison.

Born in Khoy, Iran, Michael moved to the United States in December of 1959 and settled in New Jersey in 1970.

An ophthalmologist, Michael worked out of his home in South Plainfield. He also worked at several clinics throughout the state of New Jersey. A dedicated husband and father, he truly was a family man and attended Sacred Heart RC Church in South Plainfield.

He is survived by his devoted wife, Martha Marianne (Kiekhoefel) of 46 years; two loving daughters, Elizabeth Jalali of New York and Susan King and husband Guy of Georgia; a dear brother, Kuchak and wife Ingrid of Ashton, Md. and a sister, Ashraf.

Funeral services were held at McCriskin-Gustafson Home For Funerals.

Filmore Waters Burgess, 89

Filmore Waters Burgess died on Monday, Feb. 8 in the Haven Hos-

pice at JFK Medical Center in Edison.

Born in Old Trap, N.C., he resided in Hoboken before settling in South Plainfield in 1957.

Mr. Burgess served in the U.S. Coast Guard during WWII as a motor machinist mate 1st class and was involved in the invasion of North Africa and Italy before his honorable discharge in 1945. He always attended and participated in the annual U.S.S. Samuel Chase Ship reunions.

He had been employed as maintenance supervisor for Plessey Dynamics in Hillside for 30 years, retiring in 1982.

Surviving are his wife of 66 years, Ann (Trevisan), whom he married in January of 1944; three sons, Steve and wife Cindy of Bon Air, Va.; Robert and wife Candy of Branchburg and Philip and wife Barbara of South Plainfield; a sister, Emma Lee Todd of

N.C.; a brother, McClellan of Virginia, five grandchildren, Lauren, Pamela, Amanda, Jesse and Jeffrey and a great grandson, Nicholas.

Funeral services were held at McCriskin-Gustafson Home For Funerals.

In lieu of flowers, donations in his memory may be made to the Haven Hospice, c/o JFK Medical Center, 65 James St., Edison, N.J. 08818.

HOMETOWN HEROS
SEND-A-PLATTER

We will send to any home a beautifully arranged and wrapped Assorted Sandwich Tray with two of our homemade salads—Any Day—Any Time.

\$49.95

908-755-HERO (4376)

Hillside Cemetery
Regarded as one of the most beautiful cemeteries in the East

Scotch Plains
908.756.1729
www.hillsidecemetery.com

It is far easier for your family if you plan ahead

www.mccriskinfuneralhome.com

McCriskin-Gustafson
"An Independent, Family Owned & Operated Funeral Home"

HOME FOR FUNERALS, LLC

(908) 561-8000

2425 Plainfield Ave., South Plainfield, NJ 07080

PRE ARRANGEMENTS • S/S MEDICAID PROTECTION • CREMATION SERVICES
GREEN BURIALS

James A. Gustafson, Pres./Mgr. • N.J. Lic. No. 4205
Richard W. McCriskin II, Vice-Pres./Dir. • N.J. Lic. No. 4564

Richard W. McCriskin, Dir. • N.J. Lic. No. 3147
William C. McCriskin, Dir. • N.J. Lic. No. 3382
Daniel M. Erickson, Dir. • N.J. Lic. No. 4798

Want some good news?

Subscribe!

What's going on in your town?

✓ Yes, I want home delivery. Call 908-668-0010

Save a stamp... E-mail your request to spobserver@comcast.net ** We now accept VISA and Mastercard **

Follow the ups and downs of the borough in the Observer, an independent newspaper for South Plainfield. Send check or money order for \$29.95/one year (out-of-town \$34.95) to: South Plainfield Observer, 1110 Hamilton Blvd., Suite 1B, South Plainfield, NJ 07080. We also accept Visa and Mastercard.

✓ Yes, I want home delivery.

NAME _____

ADDRESS _____

CITY, STATE, ZIP _____

CREDIT CARD EXP. DATE _____ PHONE _____

MASTERCARD/VISA # _____ 3 DIGIT CODE _____

South Plainfield Observer

PUBLIC NOTICE
TAX SALE NOTICE
NOTICE OF SALE OF PROPERTY FOR NONPAYMENT OF TAXES,
ASSESSMENTS AND/OR OTHER MUNICIPAL LIENS

Public notice is hereby given that I, Kimberly Clifford, Collector of Taxes of the Borough of South Plainfield, in the County of Middlesex, will sell at public auction on, **Thursday, February 25, 2010** at the South Plainfield Municipal Complex, Council Chambers, 2480 Plainfield Avenue, South Plainfield, New Jersey, at 10:00 am or at such later time and place to which said sale may then be adjourned, all of the several lots and parcels of land assessed to the respective persons whose names are set opposite each respective parcel as the owner thereof for the total amount of municipal liens chargeable against said lands respectively, in accordance with N.J.S.A. 54:5-1, et seq. as computed to the 25th day of February 2010.

Take further notice that the hereinafter described lands will be sold for the amount of the municipal liens chargeable against each parcel of said land assessed as one parcel, together with interest and costs to the date of sale. Said lands will be sold at the lowest rate of interest bid, not to exceed 18%. Payment for said parcels shall be made prior to the conclusion of the sale in the form of cash, certified check or money order, or parcels will be resold. Separate checks are required for payment of property taxes and for sewer fees and partial payments will not be sufficient to remove these items from the sale. Properties for which there are no purchasers shall be struck off and sold to the Borough of South Plainfield at an interest rate of 18%.

At any time, before the day of the sale, I will accept payment of the amount due on any property with interest and costs. Payments must be in the form of cash, certified check or money order. Industrial Properties may be subject to the Spill Compensation and Control Act (N.J.S.A. 58:10-23.11 et seq.), the Water Pollution Control Act (N.J.S.A. 58:10A-1 et seq.), and the Industrial Site Recovery Act (N.J.S.A. 13:1k-6 et seq.). In addition, the municipality is precluded from issuing a tax sale certificate to any prospective purchaser who is or may be in any way connected to the prior owner or operator of the site. The lands to be sold are described in accordance with the last tax duplicate as follows:

TAX SALE LIST

BLOCK	LOT/QUAL	OWNER NAME	AMOUNT	BLOCK	LOT/QUAL	OWNER NAME	AMOUNT	BLOCK	LOT/QUAL	OWNER NAME	AMOUNT
2	8	CARELL, GLADYS C/O C. CARELL	\$121.42	130	18	ARDITO, DONALD J. & JONES, SUSANNE M.	\$114.73	272	4	SZEMAN, MICHAEL A. & MELISSA M.	\$189.46
2	10	HINDS, DERRICK & MARCIA MARSH-SANTOS, FRANCISCO A	\$189.46	132	7	SCANNELL, JENNIFER	\$1,215.14	276	3	DE MARTINO ET UX THOMAS	\$302.25
3	17	CARELL, GLADYS C/O C. CARELL	\$189.46	132	12	BARRY, JAMES P	\$172.96	277	1	MIGUEL, MARK	\$495.78
2	8	CARELL, GLADYS C/O C. CARELL	\$121.42	135	1	PRICE, CONSTANCE & DEMETRIS R	\$189.46	280	10	KARELEFSKY-BARCA, CELIA & BARCA, JOHN	\$338.93
2	10	HINDS, DERRICK & MARCIA MARSH-SANTOS, FRANCISCO A	\$189.46	135	6	ALVARADO, MIGUEL & ELVIRA	\$189.46	281	11	HARTMAN, BRIAN & ROBERT	\$189.46
3	17	SANTOS, FRANCISCO A	\$189.46	135	27	GUARINO, LAWRENCE	\$189.46	282	28	BALI, TIBOR & CHERYL	\$2,606.62
4	12	BRITT, CRAWFORD & SAUNDERS, DEIDRA	\$189.46	136	15.01	WORMLEY, PALMA J.	\$189.46	282	30	FYFFE, WILLIAM J & CATHERINE J	\$2,835.96
6	13	CORDONA, JAIME & MARTHA	\$189.46	136	19	TURLEY, RAMON & CRYSTAL	\$189.46	282	75	GLENN, DEREK ALAN	\$189.46
7	13	LESO, WILLIAM R	\$189.46	136	22	GREENLEAF, STEVEN & STACY	\$189.46	284	5	PORCHETTA BROTHERS	\$1,600.51
7	14.04	BOURNE, MERVIN & CARLA	\$189.46	136	24	DIAZ, FAUSTO B & DELSALTO, MAURA L	\$189.46	284	7	PIN OAK TECHNOLOGY LLC	\$170.25
7	16.02	STANLEY, JIMMY & CAROLYN	\$189.46	137	7.02	GUZMAN, LUIS ARMANDO	\$1,663.31	293	3	SIKANOWICZ, EUGENE	\$1,059.64
7	18	ALBERTOCKI, M.C. & SULINSKI, G.T.	\$2,353.70	138	2	TCCA, FREDDY R. & NIEVES, LOURDES	\$189.46	298	1	JA & JM ASSOC., L.L.C.	\$11,129.31
7	34	FONTANA, GREGORY & YVONNE	\$2,297.25	139	11	MILLER, ELIZABETH	\$189.46	302	1 C0005	LEO, ROBERT & ELIZABETH	\$982.09
7	65	MILLER, WILLIAM D(V) & DORIS	\$189.46	139	13	US BK NATIONAL ASSOCIATION-TRUSTEE	\$189.46	304	5.01	A.STANLEY MUNDY AND COMPANY	\$2,186.23
7	68	PEDERSEN, ALVIN C & SHIRLEY A.	\$3,169.84	139	19	MOSADO, WILFREDO	\$189.46	305	3	HARRIS, N.&L.C/O IDA HARRIS	\$189.46
8	5	MALLOQUI, MIGUEL A	\$338.93	144	14.01	DICKERSON, SCOTT & JACQUELINE	\$3,594.20	306	2	COLVIN, HELEN	\$4,015.80
9	5	PAIGE, WILLIAM & ROSITA	\$189.46	146	4	DRESS, DONALD M. & KULA, LISA A.	\$189.46	306	3	COLVIN, HELEN	\$165.38
9	7	STAYNINGS, ANTHONY & MARY	\$189.46	147	13.01	TRINKO, FRANK J & SUSAN E	\$189.46	306	4	COLVIN, HELEN	\$416.15
10	4	TAYLOR, BETTY M.	\$189.46	148	3	ALMEIDA, MARIA T	\$189.46	307	1	COLVIN, HELEN	\$353.45
10	21	ROMANO, MICHAEL & LINDA	\$1,553.31	148	12	DEUTSCHE BANK NAT'L TRUST COMPANY	\$189.46	307	2	COLVIN, HELEN	\$670.38
10	23	CURRAN, MARJORIE	\$189.46	148	21	MCCANN, RANDALL & CAROLYN	\$189.46	308	6	DENNIS, KRISTINE	\$189.46
12	29	ROESCH, RANAE & JOHN R	\$1,381.29	149	4	RUTOWSKI, JOHN LOUIS, III & PAMELA	\$189.46	308	10	DIPPOLO, CORY	\$189.46
12	35	TRUONG, MYHANH	\$189.46	151	12	SMITH, GARY & LISA	\$189.46	308	44	GREEN, JR, EUGENE & MIHALIK, SUSANNE	\$338.93
12	45	OGBEVOEN, NUGGET & SUNDAY	\$189.46	152	11	PALMA, MARCELO	\$83.04	308	49 C0001	CHIN, THOMAS W B	\$189.46
14	19	ZITSCH, ROBERT W. & COLLEEN V.	\$1,082.67	152	50	KONE, LACINA & CISSE, AWA	\$189.46	308	51 C0001	SMITH, CHRISTOPHER & CRAIG, MECHELE	\$189.46
14	27	BLACKMON, LYNDA	\$1,145.34	152	99	WROTNY, JASON	\$189.46	311	50	BARRERA, RICARDO & JULIO & GEORGINA	\$189.46
14	39	IACULLO LUCILLE	\$257.67	152	110	LORETTA CONROY FAMILY TRUST	\$3,198.28	311	51	BRELAND, STEPHEN & ALLISON N.	\$189.46
15	24	GUARRACI, RICHARD D. & HELEN R.	\$189.46	152	112	EJIOCHI, GABRIEL E. & MARY ROSE	\$189.46	312	3	CARNEY, PATRICIA A	\$189.46
15	26	MONROE, MICHAEL J. & JOAN M.	\$2,580.18	152	131	SIKANOWICZ, EUGENE M & KAY E	\$2,139.94	313	3	RINGEL, RANDOLPH B. & AMANDA	\$3,174.22
16	30	ANGUIANO, NOHRA M	\$189.46	154	1	GIANNAKIS, ERNIE J. & LINDA J.	\$189.46	313	18	RICHARD, ADRIAN D & DEBRA R	\$189.46
16	35	PATTERSON, ANITA	\$189.46	157	29	O'SHAUGHNESSY, T.P. & ZALUSKA, L.	\$189.46	313	20	GEORGE, GARY & FRANCES	\$189.46
17	10	CIFUENTES, JUAN C & RAMOS, ANGELA	\$1,288.57	158	13	BOHN, STEVEN D & DOROTHEA F	\$189.46	314	4	TITTLE, SCOTT	\$189.46
18	17	KENNY, JR., GARRY A. & MICHELLE A.	\$189.46	159	4	BOHN, STEVEN & DOROTHEA	\$189.46	315	11	DUNGEE, DOROTHY	\$338.93
20	7	TAKOUKA, TAG O.	\$189.46	159	17	CONNOLLY, MARTIN & DOROTHY	\$189.46	315	31	SIMKO, GEORGE & JUDY	\$85.14
21	2.06	WILSON, RICHARD D & MAUREEN B	\$189.46	159	23	DENTE, RALPH & ANTOINETTA	\$189.46	315	33	SIMKO, GEORGE AND JUDY	\$96.40
24	7	HUNTER, DAVID M. & TERESA A.	\$189.46	160	3	COLAPIETRO, JAMES & TRACY	\$189.46	315	53	DREWERY, JEROME & ADRIENNE	\$189.46
25	19	BENKO, SCOTT C. & ARACELIS	\$189.46	160	19	OGRODNIK, CHRISTINE M. & THAPA, SANDEEP	\$189.46	318	13	RICE, DONTE & TAMARA	\$189.46
25	20	SANCHEZ, DAVID	\$189.46	164	21	TAUFUR, FRANKLIN & MARY C	\$189.46	319	1	LEIGHTON, ROBERTA D.	\$4,151.32
28	12	MEZA, ADEL G. & REESE, RUSSELL & ADA	\$189.46	166	6	COPPOLA, JOHN J	\$189.46	319	11.02	CISSON, GREGORY J.	\$189.46
29	1	CALLES, CARLOS	\$189.46	167	11	MAINO, KENNETH A. & LAURA F.	\$189.46	322	2.01	NATT, SHELAA & FREEMAN, VELMON	\$189.46
29	4	MILLER, DAVID & STARR-MILLER, TIFFANY	\$189.46	169	7	VASQUEZ RAMOS, NANCY	\$189.46	324	3	BENSON, HAROLD & ALETA	\$2,455.64
29	5	KELLY, JEANETTE	\$1,357.64	169	18	RYAN, DIANE & ROBERT	\$1,352.77	327	5	BALKARAN, RAMGOOLAM & CHANDRAWATI	\$189.46
32	1	SELLA, MICHAEL G. & KELLY A.	\$189.46	169	20	ANTOCICCO, RAYMOND & ELAINE	\$189.46	337	13	RUZ, JULIO C. & IRIS	\$338.93
32	6	GONCALVES, LESLIE A	\$189.46	170	37.01	SPEARS, GEORGE & ANDREA	\$3,236.67	338	13	CABRERA, KARINA & RAMOS, SANDRA	\$189.46
33	2	BARNEY, ELAINE C	\$189.46	170	40	PNC BANK NATIONAL ASSOCIATION	\$189.46	343	2	BOHN, STEVEN & DOROTHEA	\$189.46
34	18	PAYNE, TREVOR D & JOANNE L	\$189.46	172	22	RIDDICK, LINWOOD & MILAGROS	\$189.46	343	8	DAZOS, DEAN J	\$189.46
37	7	PELLEGRINO, JAMES J. & AGATHA	\$1,422.88	174	10	DOUGLAS, LOCKSLEY	\$136.39	346	11	TRAN, LE & THANH M	\$1,580.38
37	9	DI PASQUALE, PHYLLIS	\$189.46	174	22	424 SAMPTON AVE LLC	\$1,094.44	353	3.05	FASANO, LOUIS	\$544.96
41	13	SUTTON, JEFFREY S. & SUSAN M.	\$189.46	177	5	AMAYA, JOSE ADAN	\$189.46	366	2.04	PATEL, KALPESH M. & ROSHNI K.	\$189.46
43	11	CRUZ, ELIZABETH A. & BLEWITT, PATRICK	\$189.46	180	9	KELLERMAN, CHRISTINE (PALECKI)	\$189.46	372	8	CASTRO, ANGEL & CLAUDIA	\$309.57
46	9	LONDINO, EDWARD	\$189.46	182	2	KRIEGER, CHRISTINE & CHARLES	\$189.46	390	2	ERRICKSON, FRED & CAROL	\$213.57
46	13	VAN NAME, MARK & HARRIET	\$189.46	182	8	CALLEJAS, ANGEL & CRUZ, MYRNA G	\$189.46	396	2.06	LAPITAN, ROSELLER & CLEOPATRA	\$2,082.30
46	26	KOZAK, JOHN & KAREN	\$1,273.09	186	4.02	PAULS, SAMUEL J	\$189.46	400	3	CONTRERAS, JORGE M	\$189.46
53	2.02	RODRIGUEZ, MICHAEL A. & KIM D.	\$189.46	187	4	SOUTH PLAINFIELD REALTY LLC	\$145.61	403	1	NHAN, TAI & TRAN, KIM ANH	\$189.46
56	13	SANCHEZ, RENE G. & VIVIANA	\$189.46	188	27.01	LEONARD, WALTER C. & GARTHA M.	\$2,386.88	404	5.03	GRAYWILLIS A. & LEIGHSA M. PATE-	\$110.66
56	14	BLASEN, YOLANDA	\$2,882.20	188	63	HARRY-SCOTT, VICKY & SCOTT, DAVID	\$189.46	404.02.103		CAPA, WILLIAM & EDGAR	\$3,468.75
56	24	RACITI, FRANK & DARLYNE	\$332.77	189	4	HOFFLER, TANYA	\$189.46	404.02.107		KERTES, FRANK M. & L.	\$4,111.25
57	10.01	BOSSSE, RONALD & LANZA CYNTHIA	\$189.46	193	4	PENDER, DOMINIQUE, SR. & DIANE M.	\$189.46	405	10	C0002 SIKANOWICZ, EUGENE & KAY E.	\$1,408.80
57	22	LAFFERRERA, EDWARD	\$189.46	193	8	CAMPBELL, KEITH & MARILYN	\$1,614.43	406.02.31		CARDEN, WANDA	\$189.46
58	25	MC VEIGH, PETER E. & JAMES T.	\$189.46	193	12	MOORE, JAMES G. & SHARON D.	\$1,737.62	406.03.2		GARCIA, LIGIA	\$189.46
60	12	SMITH, THOMAS & IRAIDA	\$189.46	193	19	WATKINS, GEORGE L. & JANICE A	\$134.35	406.03.5.01		SIKANOWICZ, EUGENE M.	\$273.21
61	33	RUSSELL, JAMES & DONNA	\$189.46	194	9	SUMMERS, LARRY & ANN	\$189.46	406.03.18		WEEKS, TRENELL	\$189.46
64	6	PENDER, NANCY	\$189.46	195	26	HEILMAN, JAMES L. & BARBARA A.	\$189.46	407	25	RUZ, CARLOS & OFELIA	\$189.46
65	8	KRAUS, ROBERT H & SEFEROGLU, HIRON	\$4,491.10	196	8	KELLY, PETER & JENNIFER	\$189.46	409	4	ANTAR REALTY LLC	\$6,540.35
65	11	DABNEY, WILLIAM & HUGHES-DABNEY, JANINE	\$377.54	198	20	FISHER, KENNETH R & CATHY E	\$1,617.59	414	11	LEONARD, WALTER E & WENDY	\$189.46
68	4	STOLARZ, ANNE B	\$2,303.76	199	29	BUSH, JOHN (V)	\$189.46	418	15	ARBOLEDA, OSCAR	\$2,762.22
71	2	BARNES, DAVID N. & LILLIAN M	\$86.21	200	8	GONZALEZ, FRANK & MARIA	\$189.46	420	3	HILL, EVELYN	\$189.46
74	8	PATTERSON-JOHNSON, LINDA	\$189.46	200	17	LEON, CARLOS T & CECILIA	\$189.46	425	5	F & M DECORATORS, INC. A NJ CORP.	\$1,675.38
74	23	ROGERS, PETER & BERTHA	\$2,440.04	201	3	TANZOLA, JOHN & KATHERINE M	\$5,320.32	427	17	IROTH, JOE J. & KOJONGIAN, GEERTJE C.	\$1,252.65
74	28	ROTH, SUSAN L	\$1,676.39	201	14.01	MARRERO, JUAN C & LIAN	\$189.46	427	21 C0001	KOURL, ELEANORE E	\$189.46
75	7	CECCHETTINI, GINA M.	\$189.46	201	37	PETERSON, MATTHEW & ELLEN	\$1,458.53	427.01	1.07 C0003	MCGUINNNESS, LAWRENCE E & ANNEMARIE	\$189.46
76	13	SUTOR, CARMELA & ZBIGNIEW	\$1,466.47	203	7	URIBE, RAMON & MARIA & BUILES, J.	\$189.46	428	7.01	ACUNA, E. & I. & DEOCAZ, J	\$2,333.21
77	4.01	WILLIAMS, KENNETH L. & ANDERSON, K	\$189.46	214	13	DAUGENTI, FRANCIS & PATRICIA	\$2,886.91	429	1	WEBER, MARION B	\$271.42
77	5.01	MITLO, SR. SHAWN	\$189.46	221	12	SCHUCH, GARY	\$189.46	437	7.01	KUKAN, LAWRENCE S. & DAWN	\$286.62
77	6	KARELEFSKY-BARCA, CELIA & BARCA, JOHN	\$189.46	222	30	DISCH, BRYAN & MAUREEN	\$1,483.17	438	3	SORIANO, NELSON A. & ANA F.	\$189.46
77	32.01	CARSON, STEVEN	\$189.46	228	2	SANKO, R. JR. & MOTTOLA, C	\$189.46	447	2.02	LIPINSKI, MATTHEW & ELIZABETH	\$7,293.91
79	3	WATSON, JUNE GREEN	\$2,670.08	228	21	KNIGHT, EVELYN	\$189.46	447	5	ADA REALTY	\$5,087.98
81	14	DORNEY, DANIEL & ALYSSA	\$189.46	229	10	CABRERA, JOSE	\$189.46	457	1.01	AAA STORAGE DEPOT LLC	\$20,923.00
82	4	MC									

Call now for best placement!

**Go ahead,
you know
you want to.**

**Reach every home and business
(10,000+) in South Plainfield in
the March 26 issue of the**

**South Plainfield
Observer**

Your #1 Source for South Plainfield News

Reserve your space by March 5 for the March 26 Observer and reach every home and business in the borough (10,000+ circulation). For rates and dates, call 908-668-0010 or email: spobserver@comcast.net.



Amanda and Erin Towneley enjoy breakfast, sponsored by the South Plainfield Soccer Club, at the Elks Club on January 31.

In My Opinion

Opinions expressed in this column are not necessarily those of the publisher, nor do we guarantee accuracy.

(Continued from page 2)
individual names. I was simply expressing an opinion concerning actions taken by the mayor and council. I was never derogatory towards you or anyone else on the council.

There are times when good people can disagree and everyone is entitled to their point of view. But there was something most disturbing in your response letter. There was a level of animosity and venom which has be-

come too commonplace at council meetings and in general discussions. Because I had an opinion that differed from yours, I was being obstructionist and harassing (your words).

I think the time has come to bring back civility and respect. We can and should disagree when it is appropriate but demeaning people and lashing out at them is not what Democracy is all about.

MIKE ENGLISH

Classifieds

LOCAL CLASSIFIED ADVERTISING

HELP WANTED-ELDERLY CARE PERSON

EXPERIENCED PERSON WANTED TO care for senior citizen two to three hours weekdays. Light housekeeping, supervise lunch, animal friendly person wanted, salary negotiable. Call (908) 226-1872.

HOME FURNISHINGS

MATTRESS SETS-FULL SIZE \$189, new ortho plush set still in plastic. Twin \$169 (732) 259-6690.

MATTRESS SETS-PILLOW TOP OR plush, brand new in plastic with mfg. warranty. Queen \$219 King \$375 can deliver (732) 259-6690.

HOUSE FOR SALE-OPEN HOUSE



OPEN HOUSE-SAT.&SUN., FEB. 14, 12-4 PM
1607 KENYON AVE., SO. PLDF.
3 BDR ranch, 2 BTHS, F/P, D/R, fin. W/O bsmt., new C/A, roof, gutters, deck w/BQ, B/B heat. Move-In cond. \$349K. Agents Welcome. (908) 561-0766/cell (908) 405-5342.

HOUSECLEANING

TERRI'S CLEANING-\$10 A ROOM. REFERENCES AVAILABLE. CALL (732) 614-5296

LIMOUSINE



Amanie Limousine Service

Quality Service is Our Goal

Low Rates • Airport • Special Events • Corporate

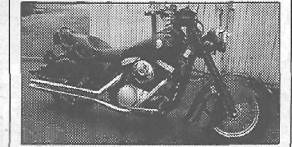
NJ-NY-PA-CT-MA-MD-DC-RI

1-866-331-1440

online reservations: www.AmanieLimo.com

MOTORCYCLE FOR SALE

1999, 1500 KAW VULCAN DRIFTER
-5,600 Orig. Miles, Like New.Many extras. \$9,500 or best offer. Call (908) 930-1808.



REAL ESTATE AUCTION

Nominal Opening Bid Starts at \$25,000
1158 LORRAINE AVE, PLAINFIELD, NJ
3BR 1.5BA 1,500sf +/-

Property sells: 10:00am Tue. Feb. 23 on site
Open to the Public

For open house information, please go to
williamsauction.com or 800-801-8003.

Many properties now available
for online bidding!

5% Buyer's Premium May Apply

Williams & Williams

NJ Peter Costanzo broker RE#8910502,

Peter Costanzo Auctioneers Inc broker

RE#8900421

GARAGE SALE

Got Stuff You Don't Need? Sell it!

Place your garage sale ad for \$20.
Call 908-668-0010 for more information or to place your ad.
Spring cleaning? We can help!

BUSINESS/PROFESSIONAL/SERVICES

AUTO BODY

R&C AUTO BODY

Family Owned & Operated Since 1962

Expert Color Matching
24 Hour Towing
Lifetime Repair Warranty

Lic. No. 00992A

908-757-1933

3330 Park Ave., South Plainfield

J&L auto body

Since 1972

Approved Auto Repair

908-561-3354

149 Durham Ave. South Plainfield • Visit us at www.jleutocenter.com

Bring your car in for repairs and
Receive **5% OFF** Auto Body or Mechanical Repair.

Including insurance estimates. With this ad. Expires 2/19/10.

AUTO REPAIR

C&R Auto

Mon-Fri 8-5
Bill & Tom

Complete Foreign & Domestic • TIRES

Auto & Truck Repair • Tune Ups
Oil Changes • Shocks & Suspension
Air Conditioning • Exhaust Systems
• Brakes & Front End

235 Hamilton Blvd. South Plainfield
908-754-8313
Fleet Service

BUSINESS SERVICES

PADGETT

THE SMALL BIZ PROS

PADGETT BUSINESS SERVICES®
WHERE YOUR SUCCESS TAKES ROOT™

Accounting Today 2009 Top 100 Firm

Business and Personal Taxes ♦
Payroll ♦ Financial Reporting

Don Duffy, MBA - Owner
South Plainfield, NJ
(908) 668-6906
d_uffy@smallbizpros.com
Call for a FREE Consultation!

CONSTRUCTION

References Available
Fully Insured

N.J. License
#13VH0033600

HARTJE CONSTRUCTION COMPANY

Residential Contractor

Additions • Bathrooms • Kitchens
• Decks • Windows • Siding

908-754-8921

ELECTRICAL CONTRACTOR

On Time Electrical Contractor LLC

Residential • Industrial • Commercial

No Job Too Small

908-451-3313
On Call 24hrs.

Fully Insured & Bonded NJ
BILL RITCHIE Lic #8854

GENERAL CONTRACTOR

BUILDER & GENERAL CONTRACTOR

NJDCALIC #019771
Since 1981

Lordina Builders

908-753-3850

ADDITIONS • KITCHENS
BATHROOMS
Office Renovations
FREE ESTIMATES

GUITAR LESSONS

GUITAR LESSONS

Beginner to Advanced

908-822-9702
SOUTH PLAINFIELD

All Styles

Kenny Campbell

www.kennymusician.com

HOME IMPROVEMENT

PROFESSIONAL CARPENTRY

Free Estimates!

ROOFING • SIDING
WINDOWS • DOORS
PORCHES • DECKS

Most repairs.

908-561-4073

Resident Specialist - 38 Yrs. Experience - NJ Licensed Contractor

MASSAGE

CENTRAL JERSEY

Holistic Health Center and Spa

MASSAGE • REFLEXOLOGY
HYPNOSIS • REIKI

DOULA LABOR ASSISTANT

Roxanne Cortese, CD, CMT, CMT

2701 Park Ave. So. Plainfield, NJ 07080
(908) 561-1511
By Appointment Only

GIFT CERTIFICATES AND GIFT BASKETS

PAVING

MARK L. DI FRANCESCO

PAVING • MASONRY

Free Estimates

Driveways • Parking Lots • Seal Coating • Pavers • Wallstone
Slate • Bluestone • Excavating • Foundations • Block Work
Cultured Stone • Drainage • Water Proofing

3RD GENERATION IN BUSINESS

908-668-8434

REAL ESTATE

www.joediagnanrealestate.com

"Nobody knows South Plainfield like Joe Diagnan."

Century 21

Moretti Realty

Business:
(908) 755-6300 x 315
Eves: (908) 756-9123
Email: Diagnan@morettiirealty.com

Joseph Diagnan

Realtor-Associate & Lifetime South Plainfield resident
225 Maple Ave., South Plainfield, NJ 07080

Century 21

Moretti Realty

Put your trust in a Realtor who can get the most money through knowledge & experience!

Over 28 years experience in South Plainfield & vicinity

Office: (908) 755-5051 Ext. 313
(908) 753-1346 Evenings
Email: sherwood@morettiirealty.com

225 Maple Ave., South Plainfield

REMODELING

Love Your Home

RONZO REMODELING

HOME IMPROVEMENTS

Bathrooms • Kitchens • Ceramic Tile
Windows • Doors • Decks
Custom Installations Available

Joe Ronzo Sr. Lic. 13VH00092100

(908) 668-0662

Newspapers Drive Sales.

More than 1.2 million NJ adults made a purchase in the past week because of a newspaper ad.

Grow your business. Advertise in the South Plainfield Observer, with more local readership than any other newspaper. To find out more call 908-668-0010.

Classifieds

CLASSIFIED RATES
\$15/three lines; \$1 for each add. line.
Run 4 consecutive issues, get 10% discount.
South Plainfield Observer

Call 908-668-0010
to place your ad or
E-mail your ad to:
spobserv@comcast.net

ADOPTION

ADOPT: Childless loving woman (teacher) wishes to adopt a newborn. Financially secure home with close extended family. Legal/Confidential. Expenses paid. Please call Denise: 1-866-201-4602 Pin#0196

ADULT COMMUNITIES/REAL ES

Smithville, NJ - 55+ FOUR SEASONS - Large MULBURY Model, handicap accessible, 2 sunrooms, premium lot. Near AC and shore. Owner financing 3%. 609-748-2988, 609-335-5124.

ANNOUNCEMENTS

BUY NEW JERSEY FOR \$495! Place your 25-word classified ad in over 125 NJ newspapers! Call Diane Trent at 609-406-0600 ext. 24, email dtrent@njpa.org or visit www.njpa.org. (Nationwide placement available) Ask About our TRI-BUY package to reach NY, NJ and PA!

AUTOS WANTED

Please **DONATE** your car. 1-800-692-1221. **CHILDRENS HOPE CHARITIES.** Tax deductible-free pickup-any condition. Also receive gift certificate for each car donated. Help Us, Help Children. **DONATE YOUR CAR, TRUCK OR BOAT TO HERITAGE FOR THE BLIND.** Free 3 Day Vacation, Tax Deductible, Free Towing, All Paperwork Taken Care Of. 1-877-873-1598

BUSINESS OPPORTUNITIES

ALL CASH VENDING! Do you earn up to \$800/day? Your own local candy route. Includes 25 Machines and Candy. All for \$9,995. Call 1-800-460-4276.

EDUCATION

COLLEGEBOUND NETWORK: Free Advice! We'll Help You Choose A Program Or Degree To Get Your Career & Life On Track. Call Collegebound Network! 1-877-872-0053.

FINANCIAL

AMERICAN TAX RELIEF- SETTLE IRS BACK TAXES. Do You Owe Over \$15,000? If So...Call us Now! ****** FREE CONSULTATION****** For Less Than What You Owe! Stop Wage Garnishments! Remove Bank Levies, Tax Levies & Property Seizures! Stop Payment Plans That Get you Nowhere! Settle State and Business Payroll Tax Problems. Eliminate Penalties, Interest Charges & Tax Liens! **SETTLE IRS BACK TAXES. NO OBLIGATION, CONFIDENTIAL. CALL AMERICAN TAX RELIEF 1-800-355-1716. FREE CONSULTATION**

CREDIT CARD RELIEF ** FREE CONSULTATION****** Save Thousands of Dollars Out Of Debt In Months - NOT Years! Avoid Bankruptcy! NOT A High Priced Consolidation Company Or A Consumer Credit Counseling Program **CALL CREDIT CARD RELIEF 866-479-5353** Not Available in All States.

HEALTH

HERNIA REPAIR? DID YOU RECEIVE A COMPOSITE KUGEL MESH PATCH BETWEEN 1999-2008? If patch was removed due to complications of bowel perforation, abdominal wall tears, puncture of abdominal organs or intestinal fistulae, you may be entitled to compensation. Attorney Charles Johnson 1-800-535-5727.

Wow! Run your classified ad on our web site for an additional \$5.

HELP WANTED

AIRLINES ARE HIRING. Train for high paying Aviation Maintenance Career. FAA approved program. Financial aid if qualified. Housing Available. Call Aviation Institute of Maintenance. (888-349-5387).

HVAC - Career minded Manager, experienced residential and light commercial. Technical and Design ability. Clean record. Established Central Jersey location- Fax resume: 732-634-0318 or phone: 732-634-8000.

****STUDENT EXCHANGE PROGRAM**** Seeks Local Coordinators Passionate about your community? Help us expand! Unpaid but monetary/travel incentives. Must be 25+-. Visit efoundation.org or call 877-216-1293

Service Technician and Sales/Marketing professional. 2 POSITIONS AVAILABLE. Commercial kitchen/refrigeration repair company. Experience required. Competitive pay/benefits. Fax resume w/ salary history to 973-691-2070 or email glennn@serviceplususa.com

LAND FOR SALE

ATTENTION SPORTSMEN New York State Land for Sale 14.8 acres w/ power & snowmobile trails - \$27,995. 4 acres w/ access to trails and power. NOW: 12,995! 24.5 acres w/ Sportsman's Cottage bordering trails \$79,995. Call Christmas & Associates 800-229-7843 www.LandandCamps.com

MISCELLANEOUS

ATTEND COLLEGE ONLINE FROM HOME. *Medical, *Business, *Paralegal, *Accounting, *Criminal Justice. Job placement assistance. Computer available. Financial Aid if qualified. Call 888-220-5975 www.CenturaOnline.com

MISCELLANEOUS

NEED TO REACH THE PRESS? Send us your press release and we'll do the rest! Fee. Call Diane Trent at 609-406-0600 ext. 24, email dtrent@njpa.org or visit www.njpa.org.

CASH FOR GOLD. Sell your Gold Jewelry. Request Your FREE Kit. Cash in 24 Hours. 1-877-739-0184.

FREE Identity Theft Protection! (For 30 Days) **LIFELOCK.** Call Now! ADD 10% Off. Use Promo Code: **FIVEFACTS** Call 1-877-848-0785

MISCELLANEOUS FOR SALE

DISH. \$19.99/Month. Why Pay More? **FREE** In-stall w/DVR (Up To 6 Rooms.) **FREE** Movie Channels (3 Months.) **AND \$400+ New Customer Bonus!** 1-866-397-1394

PUBLIC NOTICES

www.njpublicnotices.com - Subscribe to receive automatic notices: sheriff sales, foreclosures, RFP bids for schools, town meetings, variances, etc.

REAL ESTATE

Retirement and future move? Discover Delaware and our gated community. Manufactured homes from the mid 50's to low 100's. Brochures available 1-866-629-0770 Or search www.coolbranch.com

REAL ESTATE/OUT OF STATE

UPSTATE NY - FARM LIQUIDATION SALE! 10 acres - \$28,500. Woods, fields, views, overlooks 2 river valleys! Sub dividable! A solid investment! Owner terms! Virtual tour: www.newyorklandandlakes.com or 866-430-9873. Won't last!

WATERFRONT PROPERTIES

Coastal North Carolina free list of land bargains, water access homesites from \$35,900- direct access ICWW, Pamlico Sound, Atlantic Ocean. Financing available. 1-800-566-5263

Deadline to place an ad is Monday, 5pm

Looking for statewide coverage for your classified ad?

Place your 25 word classified ad in over 125 newspapers throughout New Jersey for \$495 with just one call.

2.1 million circulation!

Call the Observer at 908-668-0010 for information.

BUSINESS/PROFESSIONAL/SERVICES

COINS-GOLD WANTED

TOP PRICES PAID

WE BUY YOUR UNWANTED GOLD & GOLD JEWELRY

We also buy all U.S. and Foreign Coinage/Paper Money, Precious Metal Bullion, Sterling Silver & Vintage Sportscards.

Gregory S. Heim • 908-405-6408
9 AM to 8 PM

South Plainfield resident for eight years

www.gynandroidhead.com

References available upon request

We will come to you & provide a free verbal appraisal. Call for details.

CARPETING AND FLOORING

Carpet • Area Rugs • Tile • Hardwood • Laminate • Linoleum

Commercial and Residential

FREE ESTIMATES Wall to Wall, Sam lays it All! **SENIOR DISCOUNT**

Sam the Carpet Man

MY WAY CARPET

1-877-GO-MYWAY
1-877-466-9929

Fax: 908-756-4040 119 Hamilton Blvd. mywaycarpet.com
South Plainfield, NJ 07080 mywaycarpet@msn.com

Repairs • Restretching • Binding • Custom Tile • Sanding and Refinishing

COMPUTERS

Concerned About Computer Virus Protection? Home Security?

For advice and installation, call Stan Wilkinson at

ST Computers

908-769-0709

- New Computers/Upgrades
- Hardware/Software Installations
- In Home Service
- Website Development

Cell: 732-423-3504
Visit us at www.stcomputers.org

JEWELERS

FINE JEWELRY • EXPERT REPAIRS

CINDY MICHAELS

Jewelers & Gemologists

2325 Plainfield Avenue
South Plainfield
908-769-4264

Edward J. Colucci GEMOLOGIST

WE BUY GOLD

PARTS & EQUIPMENT

PM PARTS & EQUIPMENT

Parts-Sales-Service-Rentals

WE ARE A FULL SERVICE DEALER!

CATERING TO: CONTRACTORS, LANDSCAPERS, HOMEOWNERS

PAUL BILUCH, OWNER

250 Mack Place, South Plainfield
908-822-9828
(908-756-7036 fax)

Pucker Up South Plainfield!

It's our favorite time of the year... when we deliver the *Observer* to every home and business in the borough. To reserve your space call (908) 668-0010 (by March 5).

"Happily" Serving South Plainfield Since 1997

PLUMBING, HEATING & COOLING

License #8741



Professional Plumbing, Heating & Cooling, Inc.

(908) 561-1941

South Plainfield, NJ

FRANK MCCARTHY

Prudential New Jersey Properties®

Rose Marie Pelton
REALTOR-ASSOCIATE
South Plainfield Resident For Over 39 Years

908-753-4450 X121
(732) 653-0322
Fax 908-753-0136
RosePelton@att.net

Prudential NJ Properties®
659 Mountain Boulevard, Watchung, NJ 07069

Prudential New Jersey Properties

Cynthia "Guancone" Freund
Licensed Real Estate Sales Associate

Cell 908-447-6980
Bus 732-494-7677

3 Amboy Avenue
Metuchen, NJ 08840

CynthiaFreund@PrudentialNewJersey.com

"Still the Best, Now with the Competitive Edge"



John (JACK) Pedersen
Broker Associate/Certified Distressed Property Expert

32 South Plainfield Avenue
South Plainfield, New Jersey 07080
Office (908) 755-0200 x124, Cell (908) 922-2369
jackp1@remax.net, www.jackpedersen.com

If you think all agents are the same, You Don't Know Jack!

CERTIFIED DISTRESSED PROPERTY EXPERT®

Solving the foreclosure crisis one homeowner at a time.

Each Office Independently Owned and Operated

ROOFING

CELEBRATING 50 YEARS

Since 1960

J.T. PENYAK ROOFING

908-753-4222
www.penyakroofing.com

3571 KENNEDY ROAD
SO. PLAINFIELD, NJ 07080

SNOW REMOVAL

Silver Creek Landscaping

SOUTH PLAINFIELD

SNOW REMOVAL

PLOWING - SANDING - SALTING

- Office Buildings
- Apartment & Condo Complexes
- Retail Stores
- Schools and Churches

-Sign up now for 24 hour service-

908-756-7272

SNOW REMOVAL/SALT

Call 

KLK Trucking for:

Sand/Salt Mixture, Bulk Rock
Salt, Ice Control Sand

Sanding • Salting • Snowplowing
Pick up or Deliv., Mon. thru Sat

908-757-4434

265 Ryan Street
South Plainfield

TILING

Fully Insured
Free Estimates

Commercial  Residential

DC TILE & MARBLE

Installations of: • Backsplashes • Floors
• Walls • Shower/Tub Areas

Custom Designs & Patterns
Ceramic • Granite • Marble • Porcelain • Slate

Don't Cook Friday Draws 120 for Italian Dinners

By Patricia Abbott

More than 120 diners took advantage of the latest "Don't Cook Friday," Italian dinner hosted by the South Plainfield Knights of Columbus Council #6203. The dinner featured spaghetti with marinara sauce or penne with vodka sauce, meatballs and sausage, salad, garlic bread, hot and cold beverages and dessert. Wine was also available for purchase.

Fourteen volunteers, including the Knights, their wives and family members took orders and served the food and drinks.

The kitchen was headed up by chef Joe McGeehan, assisted by Mayor Charlie Butrico and Joe Scrudato prepared the plates of food. In addition to the dinners for the sitdown guests, they also prepared many take-out meals. Grand Knight Bill Butrico prepared food, visited with guests and served tables, while Knight Dan Ratti roamed the room selling 50/50 tickets.

The lights were dimmed and the tables were decorated to replicate an

atmosphere of an authentic Italian bistro. Volunteers wore red, white and green aprons. The delicious meatballs and sauces were all homemade. Gerry Butrico noted that diners commented on the comfortable atmosphere, excellent service and the great food.

The Knights anticipated a low turnout due to the predicted snow storm, but the exact opposite occurred. The event was scheduled to run 4 to 7:30 p.m. Typically the "Don't Cook Friday" evenings wind down around 7 p.m., but this Friday was not the case. At 7 p.m. the tables were still filled and people continued to arrive. Over 120 people attended, a record number for the "Don't Cook Friday" dinners.

The Knights hold the dinners several times a year; the last one was in October. Proceeds from this event will go to the Alzheimer's Association to specifically aid Alzheimer's caregivers. Brochures were handed out at the door to explain the crucial role caregivers play in the daily lives of Alzheimer's patients. While their job is often a labor of love, it can also be very stressful.

Chairman for this fundraiser was Knight Ted Rubino.



Joe McGeehan and Joe Scrudato prepare food.



Knight Dan Ratti sells 50/50 tickets.

Gate Closure

(Continued from page 1)

construction equipment. In addition, there are doors on the side of the high school that lead to the wood, metal and graphic arts section of the building, and where Sodexho has a vehicle repair garage. Vehicles are streaming in and out and using it as a cut-through to avoid the traffic caused by the gate closures in the parking lots. Lake Avenue is also the sole road leading to the main entrance of the high school and is the only place for visitor parking, which is limited at best. Parents also use Lake Avenue for dropping off and picking up students attending all three schools, including Grant Elementary School across the street from the high school's main entrance on the circle side.

Police Chief John Ferraro feels that "not keeping the gates open facilitates better traffic flow as people enter and exit the parking lots" and wants to work with the school board. Police Traffic Safety Supervisor Lt. Kevin Murtagh suggested putting in a speed hump instead of the gate between the school parking lots, but the board opted for the gate and additional signage that will be placed around the lots. Ferraro noted that it is up to the board to control the gates and that Superintendent Jose Negron feels that keeping them closed makes it safer for pedestrians. He also added that no one in the police department has keys to the gates.

Borough Council President Matt Anesh plans to meet with the chiefs of the police and fire departments and EMS along with the superintendent to discuss the issue. "There are potential safety issues with opening the gates and with keeping them closed. In the end, we will consider the implementation of any traffic calming devices to mitigate any negative impact to the affected neighborhoods," said Anesh.

As far as BOE member Steve Bohn is concerned he feels that the gates should be open after school hours. "They [the parking lots] are an easy access for law enforcement and emergency vehicles and residents should be allowed to use the area for parking during events. The heavier traffic would mean less people hanging out in these areas," said Bohn. He also commented that Negron told him that the police do have keys to the gates.

"As a taxpayer and a parent in this town, who sits in this traffic on a daily basis, I am concerned with the well being and safety of the children," said BOE member Debbie Boyle, who lives between Merchants and Lane avenues. "All of these areas were open for years, including Grant School parking lot, so that traffic could flow on a steady pace. There is only one way in and out of the parking lots now and all of the traffic is forced onto side streets creating a major traffic safety issue for the students who drive to school, the parents and the children on foot." Boyle also said she had discussed the full-time gate closures with Negron and he said it was an "administrative decision" and that the town does not need to be involved.

According to the school district Web site, there are approximately 1,200 high school and 620 middle school students. Nearby Grant is home to 610 students. Busing is only available to middle school students living farther than two miles away from the school and over two and a half miles for high schools students.

**PLEASE PATRONIZE
OUR ADVERTISERS.**

Your Health Matters to Us.

FREE DELIVERY

Regional Hospice & Homecare Provider

- Major Medical & Medicare Billing Available
- Hospital Beds
- Wheelchairs
- Walkers
- Diabetic, Surgical & Ostomy Supplies
- Wound Care
- Oxygen

To Our Valued Customers,

We wish you a healthy and happy New Year! With this New Year brings many new insurance plan issues and changes. We realize the information you receive from your insurance company can be confusing and misleading, and we would like to let you know there is a good chance **YOU DO HAVE A CHOICE.**

Many insurance companies are suggesting you transfer your medications to mail order. This usually does not mean you are unable to continue to allow us to fill your prescriptions. Please stop by or give us a call so we may go over your specific options according to the rules of your plan. Oftentimes, we can continue to service you without any change of co-pay or participation.

We look forward to seeing you soon and as always, we appreciate your business and it is our pleasure to service you and your family.

With sincere thanks,

Bill Ashnault, RPh, Sandy Severini, Tom Cassio & the Staff

Twin City Pharmacy & Surgical

Tel. (908) 755-7696 • Fax (908) 755-6003
1708 Park Ave., South Plainfield

Bill Ashnault RPh.—Owner • Sandy Severini—Owner
Tom Cassio Jr. — Owner • James Kim, RPh

24-Hour Emergency Care Service ~ Free Delivery

Subscribing is as easy as clicking your mouse.
E-mail your request to spobsver@comcast.net.