

# Observer

SP PUBLIC LIBRARY  
SFFLD PUBLIC LIBRARY  
2404 PLAINFIELD AVE  
S PLAINFIELD NJ  
07080-3531

VOL 11, NO. 40

MEMBER NEW JERSEY PRESS ASSOCIATION

50 CENTS

JUNE 6, 2008

## Two Arrested in Woodland Ave. Murder Investigation

Antaine Williams, 34 of Elizabeth, and David Jordan, 36 of Somerset, were charged with murder, felony murder and armed robbery on May 7 in the death of Al Mustafa Rodriques, 30 of Woodland Avenue. Not guilty pleas were entered on behalf of both men by Assistant Deputy Public Defender Richard "Red" Barker and Richard Preston. Bail was set at \$1.5M by Superior Court Judge Deborah Venezia.

On April 14 South Plainfield Police responded to Rodriques' Woodland Avenue home after his brother found him dead on the floor of his bedroom. The home had been ransacked. Rodriques died from a single gunshot wound to the chest. His death was classified as a homicide by Assistant Middlesex County Medical Examiner Dr. Alex Zhang.

According to Assistant Middlesex County Prosecutor Nicholas Sewitch, phone, television

and computer cable lines were cut at Rodriques' home prior to the robbery attempt. Williams and Jordan had "heard it on the street" that there was money in the house.

When Rodriques didn't answer the door, Jordan and Williams left and returned the next day, posing as cable repairmen. Both were carrying guns. Rodriques, who was also armed, answered the door, at which point the robbers forced their way into the house. Rodriques fired one shot at Jordan, hitting him in the hand and neck. Williams returned fire, hitting Rodriques once in the chest, killing him. The house was then ransacked with Jordan dripping blood at the scene.

Jordan sought medical attention at University Hospital in Newark for treatment of the gunshot wounds, though Sewitch did not say whether or not that played

(Continued on page 3)



Standing (L-R) are team manager Ryan Flanagan, Al Miranda, Kyle Hughes, Taylor Curtis, Mike Maiorino, Carlos Ruiz, Ryan Harrington, Josh Rivera, Garrett Kelly, Mark McCullen and Coach Jim Darby. Front row are Kyle Schroeder, Taheem Smith, Dominic Papa, Dylan Papa and Robert Pasternak.

## JV Team Defeats No. 1 Seed to Win GMC Title

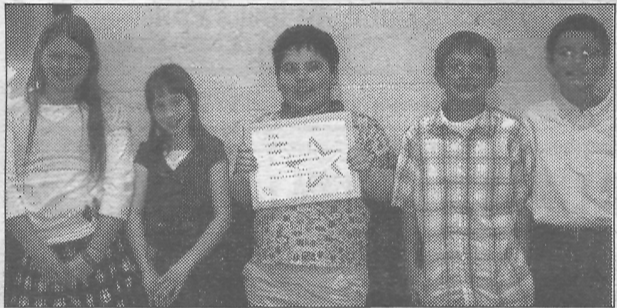
The SPHS Junior Varsity Baseball Team won the Greater Middlesex County Tournament on May 29. The Tigers were the number

two seed going into the tournament. During the tournament they defeated Old Bridge 9-1 and Colonia 6-3. In the semi-finals

they won a tough game against Edison 4-3, which put them in the finals against the number one seed St. Joe's. They defeated St.

Joe's 8-3 for the championship. Congratulations to the team and Coach Darby on a great season, finishing with a record of 18-2.

## "Celebrate NJ" Students Honored



Fourth graders (from the left) Gabriella Cusack, Melissa Novak, Tim Nuber, Brian Cullen and Nicholas Spadavecchia.

"Celebrate New Jersey" honored five John F. Kennedy fourth grade students in Laura McCreesh's Social Studies class. The students wrote letters as if they lived during colonial times. The students explained what life was like in America during the Revolutionary War. Their letters were entered in a Celebrate NJ Contest.

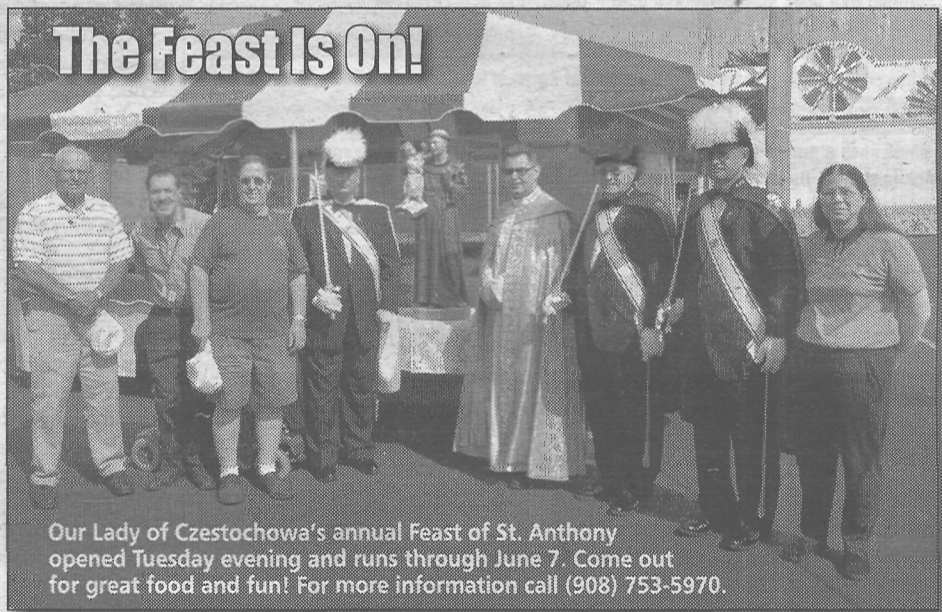
Celebrate NJ's Web site describes itself as "an online

N.J. Studies program offered to all New Jersey schools. The program, which started three years ago, is designed to help students develop research in reading, writing, critical thinking, computer, and presentation skills as they learn about New Jersey's many points of pride." The projects were submitted and judged in a statewide writing contest. There were over 6,000 students who participated in the

program from the State of New Jersey. Only 10% of the students were chosen.

Kennedy School students were selected as the "Best of the Best" in class projects. The students who were selected were honored at a student awards program on May 6 in East Brunswick. They were also treated to a Somerset Patriots game on June 5, where they were recognized on the field for their achievements.

Awards went to Brian Cullen, Gabriella Cusick, Melissa Novak, Timothy Nuber and Nicholas Spadavecchia.



Our Lady of Czestochowa's annual Feast of St. Anthony opened Tuesday evening and runs through June 7. Come out for great food and fun! For more information call (908) 753-5970.

## Middle School Takes Trip to Remember

Just prior to graduating from the Middle School, eighth grade students enjoy a three-day, two-night bus trip to Washington, D.C. Close to 250 teenagers make the journey each year, which is paid for by the parents. The excursion began many years ago as an overnight trip by then Principal James Dowden. He felt that since other middle schools in the area were sponsoring a trip for graduating eighth graders, South Plainfield should have the opportunity to do the same.

The annual trip is sponsored by the student council with Board of Education approval. Principal Steve Novak, Student Council advisors Donna Tierney, Joe Blondo and John Limyansky, nurses and several teachers make the trip, as well as parent-chaperones.

Six buses carrying close to 318 people pulled out of the Middle School parking lot in the rain early on the morning of May 29. One of the buses carrying approximately 50 people, including Novak, nurse Roseanne Coppi and art teacher Steve Phillips, stopped at a rest stop on the N.J. Turnpike because the windshield wipers were not functioning. After a minor delay a replacement bus arrived and the group continued on their way. Their first destination was a tour of the U.S. Capitol building. The rest of the day was spent visiting the Smithsonian and the U.S. Holocaust Memorial museums.

During the busy three-day stay, the group visited Arlington National Cemetery and the Iwo Jima, Jefferson, Vietnam,

Lincoln, Korean, FDR and World War II memorials. The tour buses also passed by the White House twice. Nights were spent at the Sheraton Annapolis Hotel. A dance and pizza party were held the first evening and a dinner cruise on the Potomac the second evening.

The buses left the hotel around 8 a.m. on May 31 and headed for the Baltimore Inner Harbor and a tour of the aquarium. The entire group headed home around 2 p.m. The same group that had been delayed on the way to D.C. became disabled on Rt. 95 in Maryland approximately 30 minutes into the trip. The other busses continued on home while the stranded passengers waited for assistance.

The group's water supply soon ran out and two parents set out on foot to find more.

After sitting on the hot bus on the side of the highway for nearly two and a half hours, several students began dry heaving and one had symptoms of an asthma attack. Phillips, an EMT, Novak and a chaperone began providing first aid. They held the IV bags for students lying on the ground after the ambulances and local fire department arrived. Novak accompanied three female students and one male student who were taken to an area hospital and treated for dehydration. Councilman Joe Scrudato, a chaperone on the bus and parent of eighth grader Rachel, said that the scene was "scary." "Mr. Novak was calm and remained in total control of the situation. I was happy that there

(Continued on page 10)

## Crossing Guard Struck

A school crossing guard was struck by a vehicle while on duty at the intersection of Plainfield and Lane avenues at 7:52 a.m. on June 2.

Thomas Tucker, 72 of Plainfield, was crossing Lane Avenue at Plainfield Ave, when he was hit by a 2002 Ford Mustang operated by a 17-year-old male from South Plainfield.

The driver, a student at South Plainfield High School, was on his way to school when the accident occurred.

The vehicle was turning from southbound Plainfield

Avenue onto eastbound Lane Avenue. Witnesses stated that Tucker was crossing properly with traffic when he was struck. There were no children present at the time of the crash.

Tucker, who sustained injuries to his head, hands and legs was transported to Muhlenberg Regional Medical Center in Plainfield and released. Tucker is employed by DMS Security, which provides the crossing guard service to the Borough.

The driver, who was not named, was charged with disobeying a traffic signal.

**REGULAR COUNCIL MEETINGS** air on Mondays at 7:30 p.m.

**AGENDA and/or Other SPECIAL Meetings** air Saturday at 8 p.m.

**BOE meetings** air Thursdays at 7:30 p.m.

(Check community bulletin board for last minute time changes.)



To purchase a copy of a complete Borough Council or BOE meeting, contact the *Observer*.

#### council meetings

Meets twice a month on Mondays, except as noted.\* All meetings begin at 7 p.m.  
Borough Hall Council Chambers • Questions? 908-226-7605

Agenda Meeting	Public Meeting
Monday, June 9 (7 p.m.)	Immediately Following
June 16	June 23
July 7	July 14
August 4	August 11

All meetings of the Governing Body are held in accordance with New Jersey Open Public Meetings Act (NJSA 10:4-6 et seq) in the Council Chambers at 2480 Plainfield Avenue.

#### planningboard

Meets second and fourth Tuesday of the month, \*except where noted.  
Borough Hall Council Chambers, 7 p.m. • Questions? 908-226-7641

June 10, June 24, July 8, July 22, Aug. 26, Sept. 9, Sept. 23, Oct. 7, Oct. 21, Nov 18\*, Dec. 9\*.

#### zoningboardofadjustment

Meets second and fourth Thursday of the month, \*except where noted.  
Borough Hall Council Chambers, 7 p.m. • Questions? 908-226-7641

June 12 and 26, July 10 and 24, August 14 and 28,  
September 11 and 25, October 9 and 23, November 30\*, December 11\*.

#### boardofeducationmeetings

Roosevelt Administration Gymnasium on Jackson Ave. unless otherwise noted

Committee of the Whole, Wednesdays 7:30 p.m.: June 11, July 9, August 13, September 10, October 8, November 12, December 10, January 14, February 11, March 11 and April 1.  
Regular Public Meeting, Wednesdays at 7:30 p.m.: June 18, July 16, August 20, September 17, October 15, Nov. 19, Dec. 17, January 21, February 18, March 18 and April 8.

#### recreation commission

Meets once a month on the second Tuesday of the month, except July and August  
PAL Building, Maple Ave. 7 p.m. • Questions? 908-226-7716

#### taxpayers advisory group

The Taxpayers Advisory Group (TAG) meets the fourth Tuesday of every month at Borough Hall, 2480 Plainfield Ave. at 7 p.m. Questions? 908-769-0786.

#### siteplan sub-committee

Meets once a month on the third Tuesday of the month, 7 p.m.

June 17, July 15, August 19, September 16, October 21, November 18, December 16.

#### environmental commission

Meets once a month (second Wednesday)

Borough Hall Conference Room, 8 p.m. • Questions? 908-226-7621

June 11, July 9, August 13, September 10, October 8, November 12, December 10, January 14.

#### business advisory group

Meets once a month (first Wednesday)

Borough Hall Council Chambers, 5 p.m. • Questions? 908-757-8100

#### trafficsafety advisory commission

Meets on the fourth Wednesday of the month at 7 p.m. in the Conference Room, Borough Hall

#### boardofeducationcurriculum/technology meetings

Meets once a month on Mondays at 8 p.m. in the 2nd floor conference room at Roosevelt Administration Building on Jackson Ave.

## INMYOPINION

The opinions expressed in this column are not necessarily those of the publisher.

Dear Editor,

As troop leaders of South Plainfield Brownie Troop 883, we would like to say thanks to our great group of girls and parents.

We are in the midst of a year packed with activities which are made possible through the support of our families, friends and local businesses. On behalf of the troop, we would like to extend a big thanks to the following people and/or businesses that helped us make this year in scouting successful and so special! Hopefully, we have not forgotten anyone. If so, please know that it was not intentional.

In no particular order, thanks to Mrs. Smith, Mrs. Decker-Lorys and Mrs. Kopf from Franklin School; South Plainfield Elks Lodge #2298; Hometown Heros; Linda Hansen, South Plainfield Public Library; Sharon and Bill Reuter; Betty Grossweiler; E.J. Carrar; Ciccio's Pizza; Luigi's Pizza; Bagel Pantry; Pizzeria Uno; Piscataway Stop & Shop; Edison Courtyard by Marriott; Country Squire Restaurant in Warren; and Fatima Latif and Ilia Alston of the Girl Scouts of Washington Rock Council.

And last, but not least, a thank you to all the members of our community who supported us by attending our pancake breakfast or by buying girl scout cookies this year. You make it all possible!

**MADELINE CHRISTILLES AND  
STACIE MARISH, SP GIRL SCOUT  
BROWNIE TROOP 883**

Dear Editor,

On May 21, I gave a presentation at Grant Elementary School to Mrs. Hauck's fifth grade social studies class entitled "The Coinage and History of the Year 1793." Having given presentations on coins to groups all over the country, this was by far the best presentation that I have done for a group of children. I was impressed with the grasp of the subject matter, the interest level, and the quality of questions that I received.

As a full-time coin dealer and coin collector for almost 34 years, having a venue to spread the love that I have for the hobby gives me great joy. I am most grateful that Grant School gave me the opportunity to do just that.

**GREGORY S. HEIM  
WWW.GYNANDROIDHEAD.COM**

To the Editor:

As the president of the PTSO at John E. Riley Elementary and an extremely proud parent of a second grader who took part in Riley's first annual lip sync show, I would like to send a very heartfelt thank you to Stacey Pace and her production crew Francis Ruiz and Stephanie Murano.

This crew has a great talent for making everyone feel there is no small part and that each one of us is a star. We at

Riley truly want Stacey to know we appreciate the time and the energy and the love she has shown our children.

At the end of the night I quoted a great saying, "It does not matter how much money we make or who our friends are. What matters is making a difference in a child's life."

Stacey, Stephanie and Francis changed many lives that night for the children and their families and I can't wait to see what they have in store for us next year.

**MELISSA MENKIN,  
RILEY PTSO PRESIDENT**

Dear Mayor and Council Members,

On May 12 my wife and I had the opportunity to attend the meeting held at the Senior Center.

I must admit you can see the infighting and division among the people up front and unfortunately this division has been passed down to the people of South Plainfield.

I have lived in many other places, but my children have been raised here. We have lived here for 22 years, but that night we really felt like newcomers to this town; so we didn't speak at the meeting.

I do believe that Helen Street is the solution for our truck dilemma. The truck industry is a vital part of the town's lifeline. Yet, ever since Hamilton Boulevard was completed the town has taken on a certain appeal that not only compliments her, but lets you know you're in South Plainfield. Hamilton Boulevard, instead of being an eyesore, has become a more appealing entryway into our town.

Let's keep the trucks off of this corridor; New Market is just a bypass like so many others in New Jersey. Let's

Submit Letters to the Editor:

**Please be advised that the Observer does not publish anonymous letters.**

Letters may be submitted to the *Observer*, 1110 Hamilton Blvd. Suite 1B, South Plainfield, NJ 07080, or fax 908-668-8819 or by email: spobserver@comcast.net. Deadline is Monday, 5 p.m. Letters must be accompanied by a name and telephone number for verification. Please limit letters to no more than 200 words. We reserve the right to refuse a letter, to edit for clarity or length, and to limit the number of letters submitted on the same subject.

not allow politics and special interests to have an impact on what has been accomplished so far. South Plainfield has managed to maintain its own identity for the 22 years we have been here. This town is unlike other towns where you can't distinguish one town from the other.

So, this being said, why can't the councilmen take off their war paint, and stop their delay tactics and not let the "south" leave South Plainfield. If this council can't lead the people of South Plainfield as a whole, then I am sure that this town will lead them home come election time.

I think you as a mayor have done an outstanding job. I believe your true concern is for the good of all the residents of this town and my wife and I applaud you.

Once again, please do not separate the town into the north and south. Allow us to keep our identity, which is that of a family-oriented community with the concerns of our children and grandchildren foremost in our hearts and minds. Let's not intentionally put them in harm's way.

**SINCERELY,  
AL AND FLO MIRANDA**

## Your Health MATTERS

A Source for Medical/Dental/Wellness Professionals

### DENTISTS

## DURHAM DENTAL CENTER

COSMETIC & GENERAL DENTISTRY

281 Durham Avenue, South Plainfield (908) 791-0900

**10% OFF**

**Grand Opening Special**

New Patients Only-Expires 8/31/08

**15% Off**

All Borough of South Plainfield Employees, Firefighters and Rescue Squad Members

Dr. Loay Deifallah, DDS • Most Insurance Accepted • Se Habla Espanol

## South Plainfield Observer

The South Plainfield Observer is published every Friday

G&G Graphics, Inc.  
1110 Hamilton Blvd. Suite 1B  
South Plainfield, NJ 07080

(908) 668-0010  
FAX (908) 668-8819

NANCY GRENNIER  
Publisher/Editor-in-Chief  
Web page:  
www.spobserver.com  
(updated every Thursday)

For subscriptions, advertising or information, call (908) 668-0010.

The publisher is not responsible for typographical errors.

WAYNE GRENNIER  
Associate Publisher  
SUSAN KANEPS  
Art Director/Associate Editor

PATRICIA ABBOTT  
Staff Writer/Photographer

LIBBY BARKSY  
Staff Writer

CAROL GRENNIER  
Editorial Assistant

JEAN FULTZ  
NATIA KATSANTONIS  
TARYN BILLOCH  
Production Assistants

ROXANNE CORTESE  
JANE DORNICK  
Advertising Sales

The South Plainfield Observer (U.S.P.S. 018253) is published weekly, except Thanksgiving week, by G&G Graphics Inc. 1110 Hamilton Blvd. Suite 1B, South Plainfield, NJ 07080-2004. Second class postage paid at South Plainfield, New Jersey 07080-9998. POSTMASTER: Forward change of address orders to G&G Graphics Inc. 1110 Hamilton Blvd. Suite 1B, South Plainfield, NJ 07080-2004. Subscription rates \$25 per year in South Plainfield; \$30 per year out of town. To subscribe: 908-668-0010.

### SUBMIT YOUR ARTICLES

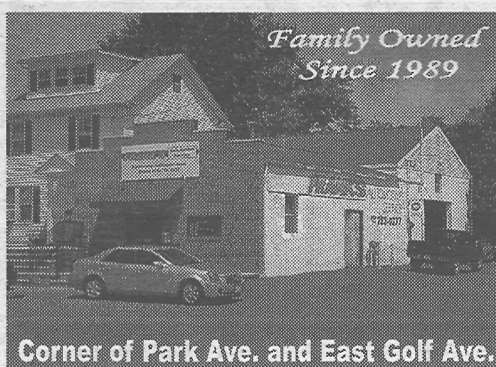
We look forward to hearing from all of you and encourage you to send in your stories and photos. The *South Plainfield Observer* is your paper. Please let us know what you would like to see in it.

To get an article published in the South Plainfield Observer:

1. Type (double spaced) the article you wish published.
2. Mail, fax or drop it at: South Plainfield Observer, Editorial Department, 1110 Hamilton Blvd., Suite 1B, South Plainfield, NJ 07080 or drop it in the box at Mohn's Flowers on Plainfield Ave., fax us at (908) 668-8819 or e-mail us at spobserver@comcast.net. Include your name, address, telephone number.

### LETTERS TO THE EDITOR

Letters may be submitted by mail to South Plainfield Observer, Editorial Dept., 1110 Hamilton Blvd. Suite 1B, South Plainfield, NJ 07080, by email: spobserver@comcast.net or fax 908-668-8819. Letters should not exceed 200 words. We reserve the right to edit for clarity or length. It is the editor's discretion to limit the number of letters submitted by one individual on the same subject. The opinions expressed in "Letters" do not necessarily reflect the opinion of the *Observer*. All letters must be submitted with name and phone number, for verification.



Corner of Park Ave. and East Golf Ave.

**1<sup>st</sup> Time Customers receive \$5  
off on a Lube, Oil, and Filter  
Service or \$20 off any service  
over \$100.00**

**FRANK'S  
Automotive Service**

**franksautomotiveservice.com**

## Ask Your Neighbor...

where to go for a job done right.

**"When you spend almost 20 years helping your neighbors with their cars, you can't help but learn a few things." We offer a full service automotive repair facility based here in our community and answerable to you. Not some corporate office somewhere. Give us a call. We think you'll like the way we do things!**

**908-753-0277**

**1521 Park Avenue  
South Plainfield**

## BOROUGH NOTES

• An ordinance repealing ordinance #1848 and #1749, which rescinds and eliminates the weight restriction on Belmont Avenue and Hamilton Boulevard, was approved by the council and later vetoed by the mayor. The council can override the mayor's veto by a three-fourth's majority vote at a future council meeting.

• An ordinance establishing traffic regulations prohibiting "engine-braking" throughout the Borough of South Plainfield was approved.

• The council approved the appointment of Michael English to fill the vacancy on the Ad Hoc Truck Bypass Committee.

• Janine Calvey was hired as a clerk in the municipal court, effective June 2.

• The council approved block party requests from Annette Nicolay for July 4 from noon to 10 p.m. on Smith Street from Jackson Avenue to Spruce Street and from Cheryl Shine for September 6 from 11 a.m. to 10 p.m. on Ritter Avenue from Triangle Place to Merchants Avenue.

• The council approved the purchase of video recording equipment for a new police vehicle from L3 Communications for \$5,320.

• The hiring of employees for the Summer Parks Program for the period June 30 through August 1 were approved.

• T & M Associated was instructed to prepare a grant application for the FY2008 NJ Department of Transportation Trust Fund Grant for improvements to New Market Avenue.

• A budget amendment was approved to include \$4,000 in grant funding received from Division of Highway Traffic Safety for the Click It or Ticket program.

• Triangle Communication was approved to display a patrol car at a trade show in Atlantic City on June 24 and 25.

• T & M Associates will perform engineering services associated with the design and bid for improvements to Linden Avenue and engineering services associated with the implementation of a curb restoration program, to include the streets of Nunnink Lane, Blecker Street and Houston Street.

• The council approved a donation of \$1,000 to Project Graduation and waived all fees, except electrical.

• The municipal clerk has been authorized to issue 2007-2008 liquor licenses to those who have met all state and borough requirements and paid all appropriate fees.

• The June 9 council agenda meeting at 7 p.m. will be followed by the regular council meeting.



Judith Krall-Russo, Beverly Krause, Audrey and Ken Reisch and Suzanne Lyte at the Tea for Queen Victoria's Birthday Celebration.

## Queen Victoria Holds a Tea Party at the Senior Center

By Libby Barsky

The South Plainfield Cultural Arts Commission recently presented the program, "A Tea for Queen Victoria's Birthday Celebration," at the Senior Center.

Suzanne Lyte, Cultural Arts executive board member, who was dressed in a period black gown with a sparkling tiara on her head, channeled Queen Victoria as she sat on a large white throne with red cushions looking regal. A long table next to the "throne" was set with a silver teapot and delicate china cups and saucers.

"I'm 188 years old. My husband is dead and that's why I am dressed in black," said Lyte (as Victoria) to the audience seated around the room.

The audience, who was expecting to hear a lecture about tea presented by tea historian Judith Krall-Russo, learned more about the personal side of Queen Victoria, her love of her husband Albert, her favorite foods and some traditions started during her reign. Krall-Russo also wore a Victorian era dress.

"The first time I saw Albert, I fell in love with him. He was so handsome," Queen Victoria said. She also disclosed the fact that her mother slept in her room at all times before she was happily married and had nine children.

Her subjects were not thrilled with Albert as her consort. "The people didn't like Albert at first, because he was German," explained Victoria. Her subjects warmed to him, when in 1842 he started the tradition of setting up and decorating a live evergreen tree in the castle for Christmas.

Tea parties became popular during Queen Victoria's long reign. She popularized the topping off of a cup of tea with a thin slice of lemon.

In addition to learning about the life of Queen Victoria, two games of the time were introduced—a Victorian edition of Mad Libs and a game called Buzz. At the end of the games, food for a tea party was served—small sandwiches, lemonade and a tea regular and whiskey flavored tea (non-alcoholic).

The Cultural Arts Commission will be celebrating its 25th anniversary next year.

## Two Arrested in Murder Investigation

(Continued from page 1)  
a role in the investigation.

A thorough investigation ensued, and leads were followed for weeks. Jordan was arrested at Colart Americas, Inc. in Piscataway where he was employed. During questioning, he implicated Williams. Williams was arrested during a traffic stop in Elizabeth later that day. Both confessed to the crime.

Williams has six prior felony convictions including robbery, burglary, eluding police, aggravated assault and drug dealing. Jordan had spent 10

years in prison for robbery, gun and drug charges.

If convicted, both men face 30 years to life in prison for the murder.

Rodrigues also had a criminal record related to a gun charge in 2001 for which he spent less than a year in jail.

South Plainfield Police Detectives James Darby and Dan Noonan, along with Investigators Paul Miller and Scott Crocco of the Middlesex County Prosecutor's Office, were credited with solving the murder.

## Nominations for Labor Day Parade Grand Marshal Being Accepted

South Plainfield's 51st Annual Labor Day Parade is fast approaching. The Public Celebrations Committee is seeking nominations for honorary grand marshal. If you know of an individual you feel has contributed outstanding service to South Plainfield, send the Public Celebrations Committee a letter stating your reasons why this person should be considered for honorary grand marshal. Include the candidate's name, address, evening phone number and detailed list of volunteer activities and accomplishments. The deadline for accepting nominations is July 25. Nominations may be sent to the Public Celebrations Committee, John Sorrentino, Chairman, 225 Hopkinson Street, South Plainfield, N.J. 07080.

The Labor Day Parade is also a great opportunity for all to meet the community. Any business or organization

interested in having a concession stand or informational table at the PAL grounds at the conclusion of the parade should complete an application available in Borough Hall or online at [www.southplainfieldnj.com](http://www.southplainfieldnj.com). Send the completed application to the Public Celebrations Committee, Debra Leporino, 170 Oakmanor Pkwy., South Plainfield, N.J. 07080. For information, contact Leporino at (908) 754-6914.

In addition, parade marshals are needed to assist in the facilitation of the parade. All marshals must be 18 years or older. If interested in assisting or for further information, contact Joe Scrudato at (908) 406-5920 or [jascrudato@hotmail.com](mailto:jascrudato@hotmail.com).

Also needed are energetic volunteers who would like to participate in the parade as a cartoon character. If interested or for information, contact Matt Anesh at [matthew\\_anesh@verizon.net](mailto:matthew_anesh@verizon.net).

## Adult School Offers Classes and Trips

Brochures are being mailed to area residents for the upcoming summer semester of the South Plainfield Adult School. If you do not receive a brochure and would like one, please call the Adult School at 908-754-4620 ext. 213.

The Adult School is offering a variety of classes including reiki, typing, computers, dance, yoga, exercise, volleyball, Spanish and golf, as well as an extensive range of exercise and swimming classes for adults and children through The Club at Ricochet.

There is also space available for the following trips:

• U.S. Tennis Open on Monday,

August 25. Bus leaves at 9 a.m. Cost is \$90.

• U.S. Tennis Open on Wednesday, August 27. Bus leaves at 9 a.m. Price is \$90.

• Feast of San Gennaro and a Slice of the Big Apple on Sunday, September 14. Bus leaves at 8:30 a.m.

• "Wicked" on Wednesday, October 8. Bus leaves at 5:30 p.m. Price is \$140.

Register over the phone with a credit card or come to the Adult School Office in the Roosevelt Administration Building, 125 Jackson Avenue, Monday- Friday, 8-4 p.m.

## SOUTH PLAINFIELD GAS PRICE CHECK

Gasoline prices are rising every day. To keep our readers informed, the Observer will be publishing the latest price of gasoline at our local stations.

Station	Location	5/27/2008 6:00 PM	6/3/2008 6:00 PM	See Note
Jersey Oil	Park Ave & E. Golf Ave	\$3.739	\$3.759	1*
Citgo	Maple & Park Ave.	\$3.739	\$3.779	
Raceway	Clinton & W. 7th	\$3.759	\$3.779	2*
Enrite	Durham & Texas	\$3.789	\$3.789	
Exxon	Maple & Park Ave.	\$3.779	\$3.799	
Jersey Oil	Hamilton & Amboy	\$3.779	\$3.819	
Lukoil	Durham & 287	\$3.859	\$3.899	
Gulf	Stelton & New Brunswick	\$3.899	\$3.899	
Shell	Plainfield & Lane	\$3.839	\$3.939	
Gulf	Front St. & Oak Tree Ave.	\$3.849	\$3.949	
Lukoil	Hamilton & Stelton	\$3.979	\$3.999	
1*Jersey Oil Credit Card Price		\$3.699	\$3.859	
2*Raceway Credit Card Price		\$3.689	\$3.869	

**2 CONVENIENT LOCATIONS**  
CARING FOR ALL TYPES OF INJURIES  
RELIEF FROM PAIN

**PHYSICAL THERAPY CENTER**  
MOST INSURANCES ACCEPTED

Theresa L. Conte P.T.  
NJ License # QA 03557

**SOUTH PLAINFIELD**  
**908-668-1951**  
1110 HAMILTON BLVD.

**Medicare  
Workers' Comp  
Auto**

Lynne Glasser-Sward, P.T.  
Lic# QA02309

**WOODBIDGE**  
**732-750-9286**  
1500 ST. GEORGES AVE.

Bring in this ad and get **30% Off** Everything in the Store

*Including all*  
**First Communion, Confirmation,  
Graduation Balloons & Supplies,  
Wedding Invitations**

**Party Stop**

Savings For Any Occasion  
**(908) 222-3315** 907E Oak Tree Rd. (next to A&P)

**Mohns**  
Flowers & Fancy Foods

Brighten up someone's day with a gourmet gift basket or floral arrangement.

**2325 Plainfield Ave.**  
SOUTH PLAINFIELD  
**(908) 561-2808**  
*Corporate Accounts Welcome*

South Plainfield Residents:  
**FREE DELIVERY**  
and **10% OFF**  
In Stock Products

**Image is Everything!**

**NEW IMAGE**  
Landscaping & Lawn Care  
Over 20 Years Experience

**LANDSCAPING SUPPLIES & NURSERY**  
• Shrubs  
• Red, Black, Tan Playground Mulch & Root Mulch  
• Topsoil Seed, Erosion Products, Weed Mat, River Red Stone & Stone Dust  
• Large Selection of Small Engine Parts & Landscaping Supplies & More

**nicolock**  
PAVING STONES & RETAINING WALLS  
FULLY INSURED | FREE ESTIMATES

**OPEN 7 DAYS**  
Mon-Fri 7-5:30, Sat 7-3:30, Sun 8-2  
**908-822-1000**  
ALL MAJOR CREDIT CARDS ACCEPTED

**Come Visit Us at 2801 Hamilton Blvd. South Plainfield**

# Around Town

## Cedarcroft Drama Club to Perform Play

June 6 and 8

The Cedarcroft Drama Club is proud to present The "iPod Club," an original play written by Nora Stasio and directed by Joan Stasio. The show will be presented at Cedarcroft Bible Chapel, 1715 Kenyon Ave. on Friday, June 6 and Sunday, June 8 at 7:30 p.m. Admission is free. Refreshments.

## Line Dancing

June 7

An evening of line dancing, sponsored by the South Plainfield Cultural Arts Commission, will take place on Saturday, June 7 from 7 to 10 p.m. at the Senior Center featuring instructors Jim and Wanda York.

Admission is free. Refreshments will be served. All ages are welcome.

For more information, call (908) 753-0327.

## GOP Comedy Night

June 7

The South Plainfield Republican Organization is hosting Comedy Night on Saturday, June 7 at 8 p.m. at the American Legion Hall on Oak Tree Avenue. Tickets are \$50 per person in advance, \$60 at the door. Hors d'oeuvres and dessert are included.

For information, call Cynthia at (908) 447-6980.

## GOP Reorganization Meeting

June 9

The reorganization meeting of the South Plainfield Republican Organization will be held on Monday, June 9

What's happening at the

## SENIOR CENTER

JUNE

MONDAY	TUESDAY	WEDNESDAY	THURSDAY	FRIDAY
<b>UPCOMING EVENTS</b> July 24 – Hunterdon Hills Summer Musical Luncheon, bus, show - \$65 ... August 7–Summer Picnic - Noon All You Can Eat; Live Entertainment; \$12				Bingo 10am-2pm <b>6</b>
Crocheting 9:30am-11:30am Yoga 10:30-11:30am Art Class 11:30am	Bingo 10am-2pm Ladies Social Group 10am	Aerobics 8:30 am Taj Mahal Trip 9am Line Dancing 10am Computer 10am, 11:30am, 1pm Crocheting 1pm Tai Chi 2pm	Pathmark Shopping 9am Computer Class 10am, 11:30am, 1pm Exercise Class 1:15pm	Bingo 10am-2pm <b>13</b>

TO SIGN UP FOR MEMBERSHIP IN THE SENIOR CITIZEN'S CENTER, VISIT THE CENTER.

at 7 p.m. at Sherban's. All committee members are asked to attend, as well as any resident who would like to join the organization, or discuss current issues affecting the borough.

## Historical Society Meeting

June 10

There will be a Historical Society meeting on Tuesday, June 10 at 7 p.m. at the Board of Education building, 125 Jackson Ave., lower level. Marching plans for Labor Day are to be discussed.

## AARP Chapter #4144 Installation of Officers

June 19

The AARP Chapter #4144 will meet on Thursday, June 19 at the Victorian Manor for a luncheon meeting.

Installing the newly elected officers will be Sy Larson, state president of AARP, and his wife, Lee. All AARP members are invited regardless of chapter affiliation. To attend, contact Sylvia Boyd at (908) 561-1899. Cost is \$25.

Needlecrafters meet Wednesday at 1:30 p.m. at the Senior Center. Call Georgie at (732) 968-3128. The group takes lap robes to Roosevelt Care Center and the N.J. Veteran's Home in Menlo Park.

## Fundraiser for Alyssa Ricciardi

June 21

Carrabba's Italian Grill, located at 200 U.S. Hwy. 22W in Green Brook, is hosting a fundraiser to support The Ashley Lauren Foundation for Alyssa Marie Ricciardi on Saturday, June 21 from 11 a.m. to 3 p.m. Alyssa, who is battling to stay cancer free, is currently awaiting a kidney transplant.

Tickets are \$40 for adults and \$15 for children under 12 and available for purchase through June 15 by calling Maggie at (908) 464-0498 or Dana at (908) 755-6799. Make checks payable to: The Ashley Lauren Foundation.

If unable to attend, but would like to send a donation, mail your donation to: The Ashley Lauren Foundation for Alyssa, 41 Hwy. 34, S Suite, 103 Colts Neck, N.J. 07722.

## SPBA Meeting

June 26

The South Plainfield Business Association will hold their monthly meeting on Thursday, June 26 at 9 a.m. at Sherban's Diner, located on Front Street. As a member of SPBA, please feel free to offer incentives for your

business at the meeting as well as be a guest speaker at our monthly meetings. This month's "Spotlight on Business" segment will be Graphix One.

Contact Debra Anne Leporino at SPBAPres@aol.com no later than Wednesday, July 3 if you would like to be a guest, a guest speaker or do a five-minute presentation on your company or business at the July general membership meeting.

## Art Muglia Memorial Golf Outing

June 27

The fifth annual Art Muglia Memorial Golf Outing will take place on Friday, June 27 at Heron Glen Golf Course located in Ringoes. All net proceeds will go to Art's favorite charity, The Matheny School, for children and adults with developmental disabilities. The cost for golf, continental breakfast, cart, prizes and barbecue lunch is \$125 per golfer.

For more information or to register, call Jim Muglia at (973) 667-2466 or E-mail Artsmemorialgolf@yahoo.com.

## Cedarcroft Vacation Bible School

June 29 - July 3

Cedarcroft Bible Chapel, 1715 Kenyon Ave., will have its annual Vacation Bible School on Sunday, June 29 through Thursday, July 3 from 6:30 to 9 p.m. There will be Bible stories, crafts, skits, games and songs. Any child entering first through eighth grade is invited to this free event.

For info or to register, call (908) 757-7598 or visit www.cedarcroft.org.

## — Out of Town —

## Lucky Ticket Tricky Tray Fundraiser

June 7

"The Lucky Ticket Extravaganza" tricky tray will be held on Saturday, June 7 at Franklin High School, Elizabeth Avenue in Somerset.

Doors open at 6 p.m. Tickets are \$20 in advance, \$25 at the door. Admission includes cold buffet dinner and one sheet of raffle tickets.

For information, contact Christine at EASLuckyticket@yahoo.com.

## Woodbridge WOWs

June 11

Woodbridge Widows Or Widowers will conduct a business meeting on Wednesday, June 11 beginning at 7 p.m. in the children's room of the main library located at George Fredrick Plaza, Rte. 35, Woodbridge. Light refreshments to follow. All widows and widowers are welcome.

For more information, call (732) 381-3255 or (908) 757-0515.

## Old Bridge Job Fair

June 11

Old Bridge Township will host a Job Fair for area residents on Wednesday, June 11 from 10 a.m. to 1 p.m. in the Old Bridge Recreation Center in the municipal complex, located on the corner of Cottrell Road and Route 516. The event, co-sponsored by the Middlesex County Department of Workforce Development, is open to all job seekers in the county. Local businesses seeking employees may register to attend for free by calling (732) 745-3970. Job seekers should bring plenty of resumes.

## 64th Anniversary of D-Day Tour

June 17-29

Fraternal Military Association of USA will tour the Normandy invasion beaches from June 17-29 leaving from New York JFK Airport. Current and past military personnel, dependents, friends plus the general public are invited to commemorate the 64th Anniversary of D-Day, June 6, 1944.

For information, call Sy Canton at (561) 865-8495 or write him at 14130-CNesting Way, Delray Beach, Fla. 33484.

## Diocese of Metuchen Golf Classic

June 18

The Diocese of Metuchen will hold its 15th annual golf classic on Wednesday, June 18 starting at 8:30 a.m. at Fiddler's Elbow Country Club in Bedminster. Cost is \$150 per person and includes a continental breakfast, golfing, barbecue luncheon and a cocktail reception.

For information and reservations, call (732) 562-2433, or visit www.diometuchen.org.

## Celebrate Life Day

June 20

The Diocese of Metuchen will sponsor the third annual Celebrate Life, a day for seniors over 55 at the St. John Neumann Pastoral Center, on Friday, June 20 from 11 a.m. to 2 p.m. The session includes Mass at 11 a.m.

Cost is \$15. Pre-registration is required by calling (732) 562-1624 or visiting www.diometuchen.org.

The South Plainfield Cultural Arts Commission  
Invites you to an evening of

# Line Dancing

Saturday, June 7, 2008  
7-10pm

South Plainfield Senior Center  
90 Maple Avenue, South Plainfield  
Intersection of Maple & Lakeview Avenues  
Across from Dunkin' Donuts  
908-754-1047

Featuring Djs  
**Wanda & Jim York**  
All Ages Welcome!

For More Info: (908) 753-0327 Free Admission—Refreshments Included

THE WORLD'S LARGEST CIRCUS UNDER THE BIG TOP

# COLE BROS. CIRCUS OF THE STARS

ENORMOUSLY ENTERTAINING!  
AMAZINGLY AFFORDABLE!

Benefits South Plainfield Vol. Fire Co.

## SOUTH PLAINFIELD

UNDER THE BIG TOP ON THE PARKING LOT AT  
GOLDEN ACRES SHOPPING CENTER  
PARK AVE. & OAK TREE RD.

**SAT. 14 & SUN. 15  
JUNE 14 & JUNE 15**

4:30 PM 1:30 PM  
7:30 PM 4:30 PM

ADVANCE TICKETS ON SALE  
THRU 6/13 AT  
PARK AVENUE BARBER SHOP  
561-0707  
TICKETS.COM  
1-888-332-5200

ON SHOW DAYS  
TICKETS ARE SOLD  
ONLY AT CIRCUS  
BOX OFFICE  
INFO: 1-800-796-5672  
(MON-FRI. 9-5)

SAVE \$5  
ON ADULT  
ADMISSION  
WHEN YOU BUY  
IN ADVANCE


**FREE TICKETS FOR KIDS AT  
FREEKIDSTICKETS.COM**  
\$47 Adult/\$12 Child (2-12)  
Reserved Seat \$3 Extra VIP Seat \$5 Extra

★ GOTOTHECIRCUS.COM ★

Century 21 Moretti Realty  
introduces

## Hamilton Commons

Located in Downtown South Plainfield that will feature...



...20 Luxury Condominiums Starting in Mid \$260's

Several different floor plans available that include one level and two level units. At street level Hamilton Commons will accommodate retail businesses with approximately 7000 square feet of space in addition to 8 luxury apartments above. Reservations are now being accepted.

Please call Century 21 Moretti marketing agents Christine Lahey or Melissa Morehouse at 908-755-5300 for additional information and details, or stop in at our office at 225 Maple Avenue for brochures.

# Governor's Teacher Recognition 2008 Award Recipients Named

Joseph Blondo, Nancy Donahue, Sally Gillis, Elizabeth Lepri, Kevin McCann, Sharon McGrath and Patricia Publik have been named 2008 honorees for the Governor's Teacher Recognition Award by the South Plainfield Education Association (SPEA). The SPEA is especially pleased to note that all of this year's honorees have spent all or a majority of all of their teaching careers serving the community of South Plainfield.

Joseph Blondo has taught in South Plainfield for 12 years, all of them as a Middle School eighth grade U.S. history teacher. He graduated from Montclair State University with an undergraduate degree in history. Blondo has served as a freshman softball coach and as an advisor for student council and Middle School graduation.

Nancy Donahue is currently at Grant Elementary School where she teaches fifth grade social studies. She has been an educator for 37 years and came to South Plainfield in her second year of teaching. She has also taught sixth grade and was a faculty member at Franklin School. Donahue is a graduate of Newark State College (now Kean University), where she received her degree in elementary edu-

cation. At school she is a member of the leadership and cultural arts committees and has served as a mentor for student teachers. In her class, she recently performed the Heimlich Maneuver on a choking student, which was reported on the front page of the newspaper. She is also an active member of several committees in her townhouse development. Donahue loves traveling, swimming, dancing and reading.

Sally Gillis is the honoree from Franklin School. She has been teaching for 18 years, all in South Plainfield. She began at Riley, taught grades three and four, and is currently working in second grade. She attended Rider University and received her undergraduate degree in elementary education. She is a member of the NEA, MCEA, SPEA and PTA and has been a coach for field hockey, basketball and softball recreation. Gillis enjoys "family time at the beach and watching my children play sports."

Elizabeth Lepri has been an educator for 18 years, 15 of which have been spent in South Plainfield. She is currently teaching first grade at Roosevelt School. Lepri received an Associates

(Continued on page 10)



Mayor Charles Butrico cuts the ribbon to celebrate the new LPN Program offered at AVTECH Institute and to mark the company's 12th anniversary. Joining Butrico are AVTECH staff members and friends.

## AVTECH Celebrates Anniversary and New LPN Program

On May 8 AVTECH Institute celebrated a 12 year anniversary as a successful training institute serving the professional IT industry at their three locations. AVTECH also introduced to the public their new Licensed Practical Nurse (LPN) program. With the introduction of the LPN program, AVTECH is looking to expand their

institute to students interested in nursing. AVTECH looks forward to the LPN program and hopes it will be an added success to AVTECH Institute.

Starting off the morning event, guest speakers included Dr. Nelson Tuazon, VP of East Orange General Hospital and Sylvia Edge, former president of N.J. Board of Nursing.

Participants of the celebration also included many individuals from the medical community of New Jersey.

Also included in AVTECH's celebration was a job fair with a number of staffing agencies providing information of the current job market and job opportunities for over 100 students/alumni in attendance.

The day's events included a ribbon-cutting ceremony led by Mayor Charles Butrico. Other participants included Christopher J. Phelan, president of Middlesex County Regional Chamber of Commerce; Edward M. Cenker, Jr., director of membership Middlesex County Regional Chamber of Commerce; Sylvia O. Edge, former president of N.J. Board of Nursing; Dr. Regional Luke, Middlesex County College Dean of Science, Mathematics and Health Technologies; Dely Go, LPN Program CEO and Gary Mao, AVTECH president and CEO. Also included were many business friends of AVTECH.

As stated by Mao, "With this celebration and introduction of the LPN program, AVTECH is looking forward to continued growth and success for many years to come."

## NEWS

### Suburban Woman's Club

The Suburban Woman's Club (SWCSP) of South Plainfield is proud to announce the awarding of two scholarships.

The first scholarship was given in memory of Sonia (Sunny) Berentsen who joined SWCSP in 1952. During her years of membership she served as welfare chairman in 1953 and recording secretary in 1957. In 1960 Sunny became the second vice-president and served as first vice-president 1961-63. She was voted president in 1963-65. She then served as junior club advisor in 1965-66 and banquet chairman in 1968 and 1969. Sunny became president of the club again in 1985-86. Unfortunately, she became inactive in 1989.

The scholarship is made possible by her family in her memory and was awarded to Samantha Smith with our congratulations and best wishes for success in college.

The second scholarship is in memory of Filomena Cusanelli-Viola who passed away this year. Filomena joined in 1990. She became a co-president in 1994-95 and president in 1995-96.

Filomena served as president again in 1989-99 and in 2000 she was a co-president. Cusanelli-Viola had been a teacher and her love of students led her to working as education chairman from 2002-05. She enjoyed being co-chairman of the theater parties from 2002-07. The club benefited by Filomena's generosity of heart and hand. She will be remembered always. The scholarship was awarded to Brittany Burton with our congratulations and best wishes for success in college.

-Submitted by Gloria M. Brenning, Publicity Chairman

**AJV AUTO MALL**

COMPLETE  
AUTO REPAIRS

**NAPA Auto Care Center**

Tire Center • Tune-Ups • Brakes •  
Exhaust • Mufflers • Oil Changes  
Alignment • A/C Repairs & Recharging

NAPA Credit Card 90 Days Same As Cash

OPEN 6 DAYS  
**732-424-0702**  
3201 Hamilton Blvd. So Plainfield

### Middle School Students of the Month



The South Plainfield Middle School Students of the Month for April are Jessica Thompson-Lightening, Corey Stasenko-Monsoon, Sofia Abd Elhady-Tsunami, Dylan Painton-Cyclone, Jackeline Barahona-Thunder and Meghan Heim-Avalanche.

**PARK Avenue Barber Shop**

OPEN  
Monday-Friday 9-8  
Saturday 9-5  
Sunday: Closed

**\$3 Off ANY SERVICE**

Please bring this ad. Limit 1 per customer.  
Expires 6/30/08

FOR APPOINTMENTS CALL (908) 561-0707

3600 H Park Avenue • South Plainfield

OPEN SATURDAYS & SUNDAYS  
SAME DAY CATERING

**HOMETOWN HEROS**  
BREAKFAST • SUBS • SALADS • SANDWICHES

**#1**  
SOUTH PLAINFIELD'S #1 CHOICE FOR QUALITY CATERING

**HOMETOWN HEROS**  
340 Hamilton Blvd.,  
**908-755-HERO (4376)**  
BY THE DARE BLDG.  
"Quality Food For Everyday Heroes"

COMPLETE LANDSCAPE SERVICES

One Stop Call For All Your Needs

**Dads & Grads Celebration Sale**

Open M-F 8-5 Sat 8-4

**Four Seasons NURSERY & LANDSCAPE DESIGN CENTER**

Now thru Father's Day

Guaranteed 20% Off All In Stock Items  
Excludes Bulk Stone, Mulch, Top Soil  
\* 50% Off Selected Trees \*

All Landscape Materials • Delivery Available  
Retaining Wall Systems, Decorative Walls, Paver Driveways, Walkways, Patio, Drainage Systems

**908.757.4646**  
Irrigation Systems Installed

430 Hamilton Boulevard, South Plainfield - 908.757.4550

Landscape Div.

Applaud the successes of your children, grandchildren, nieces & nephews, friends or loved ones with a graduation ad in the Observer!

### Congratulate Your Grad in Print!

We will publish a photo of your graduate along with your congratulatory wishes for \$20.

Send graduate's photo along with your message to: South Plainfield Observer, 1110 Hamilton Blvd., Suite 1B, South Plainfield, NJ 07080, or email high resolution photo to spobserver@comcast.net.

Your graduate's name  
SPHS Class of 2008



Congratulations grad!!  
Love, Mom and Dad

(If you want your photo returned, include a SAS envelope.)



The High School Drama Club presents "The Music Man" to an enthusiastic audience.

## High School and Middle School Students Give Excellent Performances

By Patricia Abbott

Come springtime, "all the world is a stage!" in South Plainfield schools. Play season began with the high school's production of the hit musical, "The Music Man," featuring Chris Fulton, Taylor Kurilew, Brittany Penevelope, Brett Temple,

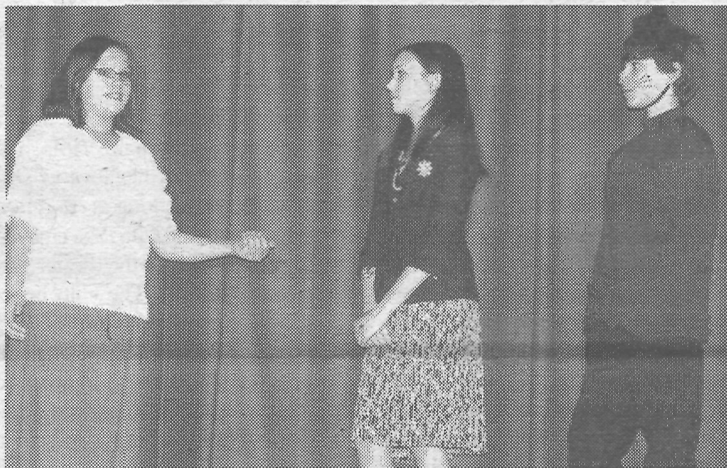
Lauren O'Day, Tim Ratti and many others. The show, directed by Bill Seesselberg, ran for four successful performances in April.

A week later the Middle School presented two short comedies, "The Smartest Woman in the World," and "Thumbelina." The shows, directed by John Angeline and Ellen Schwartz,

were performed on two evenings.

The young actors in both schools rehearsed for weeks before the productions and put on wonderful performances.

See next week's *Observer* for Grant School's "Oklahoma" Jr. and Riley School's hysterical, "Stars of Tomorrow Lip Synch show."



Middle School students performed two plays, "The Smartest Woman in the World," and "Thumbelina."



Boy Scout Troop 267 visited the Ronald McDonald House (RMH) in New Brunswick on May 13. House Manager Kathleen Dennis explained the mission of RMH and talked about what they do for families of sick children. The boys took a tour of the guest rooms, kitchen, playroom and playground. Prior to this trip the boys had collected pop tabs from soda, soup and vegetable cans and donated them to RMH. Some of the boys also collected items from the RMH Wish List and handed them out. Pictured are House Manager Kathleen Dennis, Boy Scouts Jorgen Holtermann, Brett Temple, Frank Ferraro, Jonathon Black and Andrew Rhoads and Scoutmaster Jim Donelson.

## policereport

- On May 27 a Baker Avenue resident reported that the front driver's window of their vehicle had been smashed and a Magellan GPS unit was taken.
- A Linden Avenue resident reported that the driver's side window of their vehicle had been smashed and a TomTom GPS unit was taken.
- Meineke Muffler on Hamilton Boulevard reported that the driver's side window of a customer's car had been broken.
- Engo Corp. on Case Drive re-

ported that two males were seen dumping a grill and cardboard into their dumpster.

- On May 30 Hector Yovane Menjivar-Mejia, 35, of Plainfield was arrested for stalking.
- Robert F. Heilman, 28, of South Plainfield was arrested for driving while intoxicated.
- On May 31 Bill Diedell, 73, of Piscataway was arrested for driving on a suspended license, no registration and an outstanding warrant.

## BOE Announces Special Meeting

The Board of Education will conduct a public hearing as a part of the Committee of the Whole Meeting on Wednesday, June 11 at 7:30 p.m. in the Roosevelt Administration Building gymnasium to discuss and/or modify contract terms and conditions for non-affiliated employees pursuant to P.L. 2007, c. 53.

The public is invited to submit comments regarding the appointment of the assistant superintendent and business administrator. The Board will not publicly discuss personnel matters or respond to comments made by the public, but will give all comments appropriate consideration. Formal action regarding amendments to contract terms for these individuals will be taken at the Committee of the Whole Meeting of the South Plainfield Board of Education scheduled for Wednesday, June 11 at 7:30 p.m.

**AJV AUTO MALL**  
PRE-OWNED VEHICLE SALES

ARE YOU LOOKING FOR A QUALITY, PRE-OWNED VEHICLE?  
We guarantee the lowest price on our quality, pre-owned vehicles.

OPEN 6 DAYS  
**732-424-0702**  
3201 Hamilton Blvd. So Plainfield

**Sports • Schools**  
**Cornell-Dubilier**  
**Elections**  
**Roads • Taxes**  
**School Board**  
**Council • Trucks**

**Want Answers?**  
**Subscribe! Call**  
**908-668-0010**  
Serving South Plainfield exclusively

**South Plainfield Observer**  
Your #1 Source for South Plainfield News

## BUSINESS/PROFESSIONAL/SERVICES

### LANDSCAPING

**Silver Creek Landscaping**  
SOUTH PLAINFIELD  
BRICK PAVERS • PATIOS & WALKS  
• LANDSCAPE PLANTINGS  
• HYDRO SEEDING & SOD  
• MULCH / STONE / TOPSOIL  
• VINYL FENCES & PONDS  
• RETAINING WALLS  
RESIDENTIAL & COMMERCIAL  
- FREE ESTIMATES -  
**908-756-7272**

**k-bulla**  
Property Maintenance, LLC  
Landscape Design • Lawn Service  
Snow Plowing • Top Soil  
Clean-Ups • Mulch  
**Guaranteed Service**  
**Exceptional Work**  
**Attention to detail**  
**100% reliability**  
**732.558.0356**

**Lalaria Landscaping**  
**LANDSCAPING**  
Leslie Chambers  
Telephone: (908) 917-1668  
Fax: (908) 757-5775  
• Fully Insured •  
Affordable and Reliable!

**What's Missing Here? Your Ad!**  
Join these local businesses and advertise your business here for as little as \$18.50/week.  
**Call 908-668-0010**

### GRADUATE

**LAWN CARE**  
LAWN MAINTENANCE  
LANDSCAPE DESIGN  
Mulch • Stone • Top Soil  
Commercial - Residential  
FREE ESTIMATES  
**(732) 548-0752**

**732-535-0044**  
**UNIQUE**  
LANDSCAPE DESIGN  
Design & Installation  
Professional Landscape Lighting  
Computer Design Imaging  
Brick Pavers  
Retaining Walls, Steps, Planters  
Sod and Seeding  
Fully Insured • Free Estimates

**ROSS'S LAWN CARE**  
**LAWN CARE**  
Mulch • Stone • Sod • Edging  
Trimming • Topsoil  
**LAWN CUTTING**  
Free Estimates  
**908-755-1438** SOUTH PLAINFIELD

**SOZIO** "It's a Family Thing"  
**LANDSCAPING LLC.**  
Spring Cleanups • Fertilizer Programs  
Decorative Mulch & Stone Beds  
Sod & Seeding • Shrub & Tree Trimming  
Small Tree & Shrub Removal  
Thatching & Core Aeration  
**POWER WASHING & GUTTER CLEANING**  
**(732) 619-5609**  
**- BULK DELIVERIES -**  
Topsoil, Mulch, Stone

### SCENIC LAND DESIGN

**Custom Landscapes**  
• Quality Trees & Shrubs  
• Decorative Stones & Rocks  
• Organic Topsoil & Mulch

**Property Maintenance**  
• Weekly Mowing & Edging  
• Weed & Pest Control  
• Trimming, Fertilizing  
**732.283.0876**

**Giordano Landscaping**  
• Pavers • Ponds & Waterfalls  
• Retaining Walls • Mulch • Seed  
• Top Soil • Stone • Sod • Lighting  
Landscape Design • Junk Removal  
**(908) 757-1513**

**J. GASTER LANDSCAPING**  
Dependable Service  
With a Personal Touch  
FULLY INSURED  
SPECIALIZING IN:  
Brick Paver Walkways  
Brick Paver Patios & Driveways  
Brick Paver Steps & Porches  
Stone Walls & Retaining Walls  
Complete Landscape Renovations  
Installing Wood, Vinyl & Aluminum Fences  
Installing Iron & Aluminum Railings  
Constructing Decks  
**908-757-1657**  
JOHN GASTER

# Sports

Submitted By Bob Nilan

There was a weather delay on league night because of some heavy rain and thunderstorms in our area, but all the matches were completed under less than ideal conditions.

The Hackers suffered a misfortune when one of their key players, Jeremy Szoc, became ill after playing six holes and had to withdraw. As a result, Rich Muglia and Jerry Foglia of the Roughriders finished the final few holes against just one member of the Hackers, Bill Mann. The Roughriders wound up winning the match, 14-6, led by Andy "The Florida Feather" Hayward's 37 and Jerry Foglia's 38. Bill Mann turned in a nice round of 36 for the Hackers and John Cacciatore pitched in with a 39.

Despite the loss, the Hackers remain in a tie for first-place in the American Division with Buy-Rite Liquors who also went down to defeat at the hands of KC's Korner by a surprisingly lopsided score of 16-4. Mark Dugan earned medalist honors for KC's Korner with a solid round of 37. Mike King of Buy-Rite Liquors turned in a 38 and John Gavin had a 39 and Irish Danny Griffin chose not to wear his lucky green golf cap and instead sported a navy cap and barely managed to break 40. Next week the green cap will be back for sure.

Unique Sports Accessories put together a fine team effort to defeat the talented B-Datt Squad, 13-7. Jay Ber-

tleeson of USA tied for medalist honors for the night with an impressive 2-over 35, Captain Chris Dillon shot a 37, and Ted Stannick posted a 39.

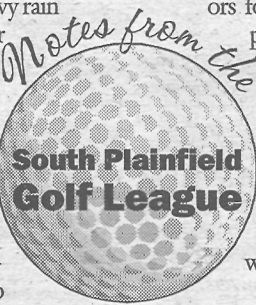
B-Datt Squad got nice performances from Mike Benak who fired a 36 and from Sam Martin who registered a 39.

Joe Diller was both long and accurate, carding a sparkling 35, as Twin City soundly whipped last year's champions, Pornovets, 18-2. Guy Severini contributed a solid round of 38 for Twin City, while Marty "Mr. Amazing" Van De Vaarst's 38 was the low score for Pornovets who have slipped into last place in the American Division with a record of 1-4.

In a match filled with a lot of whacks and thwacks and moans of exasperation, Plainfield Animal Hospital prevailed over Sport & Social, 14-6. Mike Cortese had a 39 for PAH and the other members of his foursome had a lot of problems.

In a very tight match, Witty's eked out an 11-9 victory over 2 Buds, 2 Dubs. Kevin "Boom Boom" Bickunas was low man for Witty's with a 38 while Dale Dube had his best round of the season thus far, a 2-over 35 in a losing effort.

**Low scores for the night:** Jay Bertleson, 35; Joe Diller, 35; Dale Dube, 35; Bill Mann, 36; Mike Benak, 36; Mark Dugan, 37; Andy Hayward 37; Chris Dillon, 37.



## LEAGUE STANDINGS

American Division				National Division			
W	L	T		W	L	T	
Buy-Rite Liquors	4	1	0	KC's Korner	3	2	0
Hackers	4	1	0	Twin City	3	2	0
USA	3	2	0	B-Datt Squad	3	2	0
PAH	2	3	0	Roughriders	3	2	0
Witty's	2	3	0	2 Buds, 2 Dubs	1	4	0
Pornovets	1	4	0	Sport & Social	1	4	0

## Soccer Club

### U-13 Magic Ends Season Defeating South Brunswick

Magic, the girls U-13 South Plainfield travel soccer team, ended the season with a win against South Brunswick on Sunday. Magic faced real competition in South Brunswick.

The teams were definitely equally challenged. Magic improved on their game and managed to win by a score

of 1-0. Emily Skula scored the only goal of the game. She made an amazing play, with the help of the rest of the team.

Magic pulled together and worked as a team in a very intense season. The competition has been challenging, but Magic's tireless efforts proved to be a

successful season.

The offensive and defensive players were Danielle Butrico, Emily Skula, Marissa Smith, Marie Lanza, Carlee Gonzalez, Alexa Douras, Jessie Bishop, Daisy Castro, Annie Pezzolla, Taylor Crew, Kaitlin McHugh and Kim Walsh. Jackie Dvorak, in goal,

was challenged, and did an incredible job.

Coach Smith, Bishop and Pezzolla thank all the parents for their support, and for help making this an enjoyable season. A special thanks goes to Diane Gazzara for managing the team.

water American as the squad came out on the short end of a 12-8 defeat. The weekend featured exceptional hitting by the entire squad, led by Kyle Bythell, Jake Hoffman, Jared Marks and Mike Lampasona and outstanding pitching by the entire staff led by Brian Cullen and Nick Plate.

We are proud of all our 9U All Stars: Ricky Pellegrino, Dylan O'Conner, Dillon Harris, George Pittenger, Jason Cieszkiewicz and Mason Resende make up the rest of this capable group.

The next tournament for the all star teams is the SPJBC Father's Day Classic the weekend of June 14-16. Come on down to the SPJBC complex and enjoy competitive baseball and some great food at the snack stand.

Let's have fun this summer!



SPJBC 9U All Star Team



SPJBC 8U All Star Team

The 8U team is comprised of Owen Sprigle, Jack Scudato, Ryan Stankan, Jean Sapini, Billy Keane, James Moore, Eric Brinks, Austin Feltham, Brandon Wizda, Jacob Rivera, Steven Colicchio and Joe Heilmann. The team is managed by Joe Scudato with assistant coaches Bill Stankan, Mike Sprigle and John Wizda.

The 9U squad travelled to Bridge-

Submitted by Diane Gazzara

## BUSINESS/PROFESSIONAL/SERVICES

## REAL ESTATE

**Century 21**  
**Moretti Realty**  
Put your trust in a Realtor who can get the most money through knowledge & experience!  
Over 28 years experience in South Plainfield & vicinity  
Office: (908) 755-5051 Ext. 313  
(908) 753-1346 Evenings  
Email: sherwoode@morettiirealty.com  
225 Maple Ave., South Plainfield

If you think all real estate agents are the same,  
**You Don't Know Jack!**  
**RE/MAX BEST**  
John (JACK) Pedersen  
Licensed Sales Agent  
Commercial Manager  
30 South Plainfield Ave., South Plainfield  
Cell 908-922-2368 • Office 908-755-0200  
www.jackpedersen.com

**Century 21**  
**Moretti Realty**  
Experience Isn't Expensive, It's Priceless.  
**THE LACERDA TEAM**  
Andrea Lacerda, Jesse Lacerda  
Sue Espin, Michele Leavy  
www.LacerdaTeam.com  
225 Maple Ave., South Plainfield, NJ 07080  
The Lacerda Team at Century 21 Moretti Realty  
South Plainfield's Premier Real Estate Team

**Prudential**  
**Rose REALTORS®**  
Rose Marie Pelton  
REALTOR-ASSOCIATE  
South Plainfield Resident For Over 39 Years  
908-753-4450 X302  
Toll Free 800 370-2424  
Fax 908-753-0136  
RosePelton@att.net  
Prudential Rose REALTORS®  
659 Mountain Boulevard, Watchung, NJ 07069

**Charles L. Decker Jr.**  
SALES ASSOCIATE  
732-469-1516 x 378  
Fax 732-469-1506 Cell  
908-902-9406  
CharlesDecker@PruNewJersey.com  
1996 Washington Valley Road  
P.O. Box 305  
Martinsville, NJ 08836  
**Tim Curran**  
SALES ASSOCIATE  
732-494-7677 x 345  
Cell 908-244-3228  
TimSellsJersey.com  
3 Amboy Avenue  
Metuchen, NJ 08840  
Prepare to Experience Full Service Real Estate Like Never Before.  
**Prudential**  
New Jersey Properties  
An independently owned and operated member of Prudential Real Estate Affiliates, Inc.

COMPLIMENT CLIENT AND COMMUNITY TRUCK  
DON'T MAKE A MOVE  
**Century 21**  
908-755-5300 x304  
732-742-8380 cell  
Moretti Realty  
Office: 908.755.5300 x 304  
Fax: 908.755.5052 Cell 732.742.8380  
PfeiferM@MorettiRealty.com  
www.MikePfeifer.com  
**MIKE PFEIFER**  
Don't Make a Move Without Me!  
225 Maple Ave., So. Plainfield, NJ 07080



Former Board of Education member Carol Byrne was presented with a certificate of appreciation recently for her 15 fifteen years of service to the BOE.

Looking for a job?  
Look Local. Read the  
Observer Classifieds.

# 2008 Governor’s Teacher Award Recipients Named

(Continued from page 5)

degree in liberal arts from Middlesex County College followed by a Bachelor of arts in elementary education from Glassboro State College. She is a member of NEA, NJEA and SPEA. Outside of school she enjoys watching her children’s sporting activities, gardening and volunteering with the Boy Scouts.

Kevin McCann has taught third grade at John F. Kennedy School for nine years, which encompasses his entire teaching career. He is a graduate of Cook College, Rutgers University with an undergraduate degree in environmental business and economics. Apart from teaching he actively promotes environmental interests through Highland Woods in South Plainfield. He is head high school wrestling coach, head middle school cross country coach, assistant high school boys track coach and a member of Peer Leadership. He belongs

to NEA, NJEA, MCEA and SPEA and in his personal time enjoys chess, music and exercise. McCann was named 2005 Wrestling State Coach of the Year.

Sharon McGrath is another educator who has spent her entire career, 17 years, in South Plainfield. She is currently teaching English to sophomores, juniors and seniors in a resource room setting. In the last six years she has taught ICS classes in the science, mathematics, foreign language, history and English departments. Prior to that she taught fifth grade at Roosevelt for 11 years. In 1991 she received a B.S. in education from Seton Hall University followed by a B.A. in special education from Kean University in 1998. McGrath was previously honored as a Governor’s Teacher Recognition Award winner in 2002 and in 2006 was named in “Who’s Who Among America’s Teachers.” At school she is

an I and RS facilitator and was an SPEA building representative while at Roosevelt. Currently she volunteers as a Special Olympics assistant coach. McGrath is a member of SPEA, PTA, Kappa Delta Phi, SEPA and CEC. One year ago she moved to Monmouth County and loves living near the beach.

Patricia Publik is a kindergarten teacher at Riley School. She has been an educator for 23 years, 13 of them in South Plainfield. She received her undergraduate degree in elementary education from Montclair State University and is currently working (15 credits so far) on her masters in early childhood education from Kean University. She is a member of the Character Education Committee at school and also NJEA and the New Jersey Kindergarten Educators Association. Her volunteer activities include membership in a knitting group that makes “prayer shawls” for the elderly and as an orga-

nizer of the Hurricane Katrina Victims Relief group. Publik’s other interests include knitting and sailing. She and her husband recently purchased a 30-year-old sailboat which they are renovating as a labor of love. The couple celebrated their 25th wedding anniversary last year.

## LEGAL NOTICE

**BOROUGH OF SOUTH PLAINFIELD**  
**Public Notice**  
**RETURN OF PERFORMANCE BOND**  
To Dennis Hado for public improvements at 100 Dover Place, South Plainfield Lot 25, Block 284.  
A public meeting has been scheduled by the Governing Body of the Borough of South Plainfield to hear objections, if any, to the release of a Performance Bond posted by Dennis Hado for public improvements at 100 Dover Place, South Plainfield, N.J. known as Lot 25 in Block 284 listed on the official tax maps of the Borough of South Plainfield. Said public hearing will be held at 7:00 p.m. on Monday, June 16, 2008 in the Council Chambers of Borough Hall, 2480 Plainfield Ave., South Plainfield, New Jersey 07080.  
Dennis Hado  
100 Dover Place  
South Plainfield, NJ 07080  
\$38.50 June 6, 2008

## PUBLIC NOTICE

### TAX SALE NOTICE

### NOTICE OF SALE OF PROPERTY FOR NONPAYMENT OF TAXES, ASSESSMENTS AND/OR OTHER MUNICIPAL LIENS

Public notice is hereby given that I, Richard Lorentzen, Collector of Taxes of the Borough of South Plainfield, in the County of Middlesex, will sell at public auction on, **Thursday, June 19, 2008** at the South Plainfield Municipal Complex, Council Chambers, 2480 Plainfield Avenue, South Plainfield, New Jersey, at 10:00 am or at such later time and place to which said sale may then be adjourned, all of the several lots and parcels of land assessed to the respective persons whose names are set opposite each respective parcel as the owner thereof for the total amount of municipal liens chargeable against said lands respectively, in accordance with N.J.S.A. 54:5-1, et seq. as computed to the 19th day of June, 2008.

Take further notice that the hereinafter described lands will be sold for the amount of the municipal liens chargeable against each parcel of said land assessed as one parcel, together with interest and costs to the date of sale. Said lands will be sold at the lowest rate of interest bid, not to exceed 18%. Payment for said parcels shall be made prior to the conclusion of the sale in the form of cash, certified check or money order, or parcels will be resold. Separate checks are required for payment of property taxes and for sewer fees and partial payments will not be sufficient to remove these items from the sale. Properties for which there are no purchasers shall be struck off and sold to the Borough of South Plainfield at an interest rate of 18%.

At any time, before the day of the sale, I will accept payment of the amount due on any property with interest and costs. Payments must be in the form of cash, certified check or money order. Industrial Properties may be subject to the Spill Compensation and Control Act (N.J.S.A. 58:10-23.11 et seq.), the Water Pollution Control Act (N.J.S.A. 58:10A-1 et seq.), and the Industrial Site Recovery Act (N.J.S.A. 13:1k-6 et seq.). In addition, the municipality is precluded from issuing a tax sale certificate to any prospective purchaser who is or may be in any way connected to the prior owner or operator of the site. The lands to be sold are described in accordance with the last tax duplicate as follows:

#### TAX SALE LIST

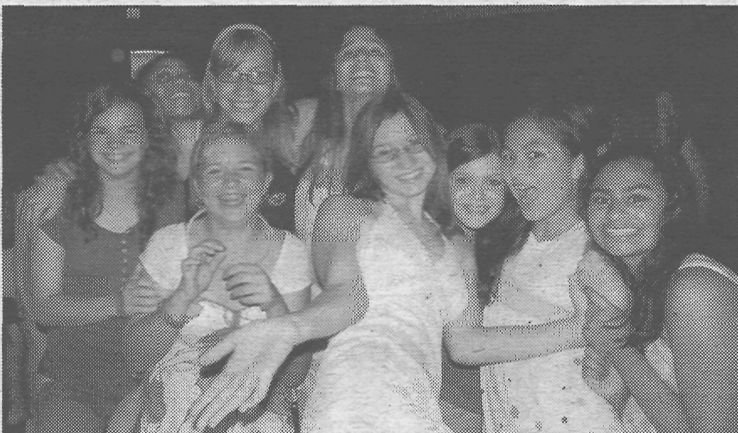
BLOCK	LOT/QUAL	OWNER NAME	AMOUNT	BLOCK	LOT/QUAL	OWNER NAME	AMOUNT	BLOCK	LOT/QUAL	OWNER NAME	AMOUNT
2	8	CARELL, GLADYS C/O C. CARELL	384.09	43	11	CRUZ, ELIZABETH A & BLEWITT, PATRICK	2,406.15	139	20	CABRERA, ROSARIO	2,291.84
2	11	ROBERTS, GERALD S(V) & MYRNA M.	352.93	50	2	HUNTER, ROBERT & ROBERTA C.	193.62	141	5	DIOS, ANDREA	1,359.40
3	8	THOMAS, DENNIS O. & LISA D.	209.93	50	4	HILLIARD, WILLIAM H. & ARCHER LEE	99.30	142	8	MOODY, DORETHA G.	2,225.82
3	11	SIMPSON, RICHARD O & MARK & VALERIA	352.93	50	8	PARADES, OSCAR	1,629.82	142	9	KENNEY, JOSEPH T & ALMA C	2,228.66
3	18	ARAGON, BERFILA A	1,818.60	51	3	RIVERA, ANTONIA	1,052.11	144	11	HAMMOND, ELOUISE C	1,189.55
3	29	1335 ASSOCIATES, L.L.C.	2,181.80	52	1	CIANFROCCA, NADINE	1,728.16	144	12.01	HEINE, RUSSELL & MARY LOU	349.58
3	39	ORDONEZ, MARTHA	352.93	53	2.03	FRIEDLAND, DAVID & BONNIE	209.93	144	12.02	WALLIS, DAVID M & DAWN M	1,551.91
3	39.01	DUONG, KHON & NGA THI MAI	1,274.52	54	4	SANCHEZ, ROSARIO B. & RENE	1,275.76	146	3	HERON, RONNIE & KERIE	2,292.32
3	41.04	CARTER, CHAUNCEY & JOCELYN	2,891.73	54	5	THOMPSON, MARY	209.80	146	4	DRESS, DONALD M. & KULA, LISA A.	352.93
3	41.06	BANARIA, PASCASIO & ANGELICA	10,475.84	56	3	ELIAS, WILFREDO E	209.80	146	11.02	MITCHELL, STANLEY J. III & SHARON M.	1,645.40
3	41.08	CARTER, REGINALD T	209.93	56	13	SANCHEZ, RENE G & VIVIANA	352.93	146	23	FLANNERY, JOSEPH F & NANCY W.	2,215.59
3	45	SCHLACK, LAWRENCE	209.93	56	24	RACITI, FRANK & DARLYNE	250.11	146	24	FIELD, NANCY	209.46
3	56	ESCOBAR, MAYNOR	352.93	57	7	VENTRIGLIA, DANIEL(D1) & JUNE	1,563.70	147	8	FOSCOLO, JOHN A. & ELYNE	352.93
4	2	URRUTIA, EDGAR & VERONICA	1,253.28	57	10.01	BOSSE, RONALD & LANZA CYNTHIA	1,870.61	148	3	ALMEIDA, MARIA T	352.93
6	13	CORDONA, JANE & MARTHA	352.93	57	21	PARADES, FRANCISCO	209.93	148	12	RAMOS, L & R S & CRUZ, G I	352.93
7	4	NGUYEN, JIMMY T	1,270.77	58	5	MAROTTA, PETER & MULLER, ALLISON	188.92	148	13	HERNANDEZ, ANTONIO	1,471.99
7	13	LESO, WILLIAM R.	209.93	58	14	GARCIA, JOSE & LIGIA	8,217.66	148	19	BROWN, DANIEL & ANNETTE	209.93
7	16.02	STANLEY, JIMMY & CAROLYN	352.93	59	11	CURTIS, HEATHER J & GASTER, CHRISTOPHER	352.93	148	23	SMITH, JOHN J. & MELISSA	352.93
7	18	ALBERTOCKI, M.C. & SULINSKI, G.T.	3,526.44	59	24	RIVERA, DAVID J & KIMLORI M	209.93	148	25	BOSTICK, JOHN K. & HARDY, KELLEY ANN	4,004.29
7	27	HAUVER, WILLIAM & AULETTO, JENNIFER	5,929.91	61	35	STANCZAK, JAN	209.93	149	8	TABER, JON & MORGAN	209.93
7	33	MARTIN, DAVID	6,181.00	62	2	SKVAROVA, VALENTINA	352.93	149	11	SMITH, DIRK (V)	985.19
7	34	FONTANA, GREGORY & YVONNE	3,274.08	65	8	KRAUS, ROBERT H & SEFEROGLU, HIRON	4,231.40	151	12	SMITH, GARY & LISA	352.93
7	60	WEDDERBURN, DAVID & ANDREA	160.51	66	12	MEMON, RASHID AHMED	76.99	152	50	KONE, LACINA & CISSE, AWA	352.93
7	65	MILLER, WILLIAM D(V) & DORIS	3,361.04	68	4	STOLARZ, ANNE B	1,776.38	154	1	GIANNAKIS, ERNIE J. & LINDA J.	352.93
7	66	PEDERSEN, ALVIN C & SHIRLEY A.	4,076.46	70	4	LIMOLI, RUSSELL & DEBRA	1,313.26	154	5	ROBINSON, KAREN & HUGHES, K.	352.93
8	2	MCCRAY, RONALD & MICHELE	1,266.23	70	8	CESAREO, EDWARD & LAURIE	352.93	156	4	SLATKY, RICHARD & CATHY ANN	209.93
8	4	BAEZ, NELSON (V) & MAGDA	4,497.21	71	12	AGUIAR, JOSEPH R. & ANN MARIE	352.93	160	3	COLAPIETRO, JAMES & TRACY	196.02
8	5	MALLQUI, MIGUEL A	640.85	72	5	MASTERS, PHILLIP M. & ALICE C.	209.93	160	19	OGRODNIK, CHRISTINE M & THAPA, SANDEEP	352.93
8	8	MALLQUI, MIGUEL A	352.93	73	3.02	ROSAL, MARK & ALCANTARA, JOYCE	209.93	161	19	DE FREES, JAMES B & MYRTLE	5,421.72
8	10	WILLADOM, ABIGAIL	352.93	75	11	YERMAN, EMIL A. (S)	1,269.62	164	3	MADALONE, JAMES T	2,224.68
8	13	SHEARIN, JEROME & TONYA	2,834.99	75	20	HERMES, ALEXANDER C.	1,515.37	164	9	CASSANO, TERESE M.	209.93
9	5	PAIGE, WILLIAM & ROSITA	209.93	76	20	DE CHIARO, EVELYN T	209.93	165	13	HOFFMAN, GREGORY R. & NANCY J.	352.93
9	7	STAYNINGS, ANTHONY & MARY	352.93	77	4.01	WILLIAMS, KENNETH L & ANDERSON, K	209.93	165	18	LINDSTROM, J.O. & E.J. (C/O SEMANCHIK)	1,354.49
9	16	CORRALES, ROBERTO & PIEDAD	1,534.42	77	5.01	MITLO, SR. SHAWN	9,129.91	169	6	RAMOS, NELLY & VILLAVICENCIO, FRANKLIN	209.93
9	24	BROWN, SUZANNE P	209.93	77	6	KARELEFSKY, CELIA & BARCA, JOHN	352.93	169	7	VASQUEZ RAMOS, NANCY	352.93
9	26	TOCA, M & S & YOLANDA & PAREDES, OSCAR	209.93	77	19	CABANAS, JAMES	1,650.26	169	20	ANTOCICCO, RAYMOND & ELAINE	5,420.37
10	21	ROMANO, MICHAEL & LINDA	4,668.53	77	32.01	CARSON, STEVEN	3,513.75	170	22	BORSOS, MICHAEL G. & TRACEY	78.18
10	22	ALI, RAYARD	209.93	79	22	ANDERSON, M S & BENEDICKSON, KRISTA	1,314.50	170	25	MARULLI, MICHAEL S. & MIRIAM M.	4,593.44
11	1	POTEAU, CHARLES	209.93	82	18	THOMPSON, JOHN	4,968.28	170	37.01	SPEARS, GEORGE & ANDREA	6,474.80
12	18	ADAMS, SAMUEL O & ROSE	352.93	83	3	BARGE, JAIME & NICOLE	352.93	170	37.02	MARK, EDGAR & DANIELLE	13,361.67
12	21	GREEN TREE SERVING	2,578.66	87	9	MULHEARN, SANDRA J	198.81	170	40	SALAAM, MICHELLE	352.93
12	44	HOWARTH, ANNE	1,350.74	91	4	WILLIAMS, TIMOTHY & NORMAN, PANDORA	352.93	171	11	BENITEZ, JOSE & MAYRA	1,443.21
12	45	OGBEVOEN, NUGGET & SUNDAY	284.29	91	44	BILAK, LISA	209.93	171	31	EODICE, MARY	5,218.87
13	4.04	MOREL, JENNY E	4,593.61	94	24	RAISCH, ROBERT F(V) & JANICE F	2,170.95	172	4	RIVERA, ED M & DEANA CAMPOSULIS-	209.93
14	12	DONOVAN, JOSEPH	209.93	97	13	CARLTON, JR., HAROLD C. & LINDA L.	352.93	174	22	ADDARIO, ANTHONY J & KELLY A	352.93
14	16	PAVEL, JILL	1,398.23	101	1.01	KONIARELIS, DEMETRIS & CHRIS	1,432.19	174	55	RITTER, STEPHEN	1,109.62
14	30	DE STAFANO, THOMAS JR & JOSEPHINE	204.64	101	5	SEVERINI, LUCILLE ANNE	209.93	175	9	LIMERICK, GLASGOW A. & PATRICIA V.	209.93
14	31	DE STEFANO, THOMAS JR & JOSEPHINE	1,454.45	102	2	PATEL, CHANDRANAKANT C. & LEENA	2,075.59	175	10	ALPHA PROPERTY PURCHASERS LLC	352.93
14	39	IACULLO LUCILLE	466.20	103	1	PAT-CAR INC	196.88	175	12	GRANJA, CECILIA & MARIA I & CASTILLO, M T	352.93
14	41	FRANCIS, VIRGINIA	352.93	104	8	KOWALSKI, LEON A. & DIANE C.	1,173.31	175	14	GOODMAN, JEFFREY A	352.93
15	7	MARTIN, DAVID J & POSTOL, COLLIN W	352.93	105	1	PASTUNA, FAUSTO	1,496.93	176	2	DI MARIA, DANIEL J. & DOREEN L.	1,665.26
15	24	GUARRACI, RICHARD D. & HELEN R.	1,481.08	106	12	ARMSTRONG, JOSEPH L.	209.93	177	5	AMAYA, JOSE ADAN	209.93
16	3	HUFFSMITH, GARY L	4,218.36	109	21	BROWN, RUSSELL A. & CHRISTINE M.	1,368.24	177	8	SMITHLINE, CRAIG A. & JENNIFER A	209.93
16	6	MOTT, CHRISTOPHER & MELANIE	209.93	110	21	MACK, DIANE P.	3,285.75	180	9	KELLERMAN, CHRISTINE (PALECKI)	4,958.21
16	30	ANGUIANO, NOHRA M	209.93	114	2	MURPHY, COLEEN	352.93	182	1	WERRLEIN, DENISE A	209.93
16	31	LICCIARDONE, CAROLE A & DOMINICK & LOUIS	352.93	118	1	MADINAH, ALONZO & QAYYIMAH	1,320.78	182	8	CALLEJAS, ANGEL & CRUZ, MYRNA G	281.43
16	35	PATTERSON, ANITA	209.13	118	7.01	LORY, JOHN D & STREET, L E & WILKERSON, L	209.93	184	12	ALVA, MARVIN MONT	352.93
17	10	CIFUENTES, JUAN C & RAMOS, ANGELA	352.93	118	8.02	MIDDLETON, CARMENCITA V	204.66	186	4.02	PAULS, SAMUEL J	6,230.03
18	4	PIPER, TREVOR S. & IMOGENE E.	1,343.24	121	2	FONTI, RICHARD C.	352.93	188	9	FIOR, ARTHUR	352.93
18	5	BROOKS, BAXTER D & KAREN S	2,935.81	121	13	ROMEO, ELEANOR & LORENZO	1,391.98	188	63	HARRYSCOTT, VICKY & SCOTT, DAVID	209.93
20	7	TAKOUKA, TAG O.	209.93	122	18	DIBELLA, FRANK	352.93	189	11	GRAVES, GEORGE(V) & MARIE H	1,416.27
21	2.06	WILSON, RICHARD D & MAUREEN B	209.93	122	55	KELLY, MICHAEL W & DIANE M	209.93	191	5	VORDZORGBE, ARNOLD KWAME	209.93
21	2.07	TRAWICK, DAVID & GWENDOLYN	209.93	122	72	NOLTY, RICHARD F JR. & ELIZABETH	2,116.52	193	11	WILLIAMS, DANIEL(V) & ELSIE	1,885.96
24	7	HUNTER, DAVID M. & TERESA A.	352.93	122	81	SANTIAGO, SAMANTHA M & ROBERTO	352.93	193	12	MOORE, JAMES G. & SHARON D.	3,352.69
24	18	WILLIS, RODNEY & SHEILA	2,198.54	124	1	MELCHIORRE, JR, ROBERT & UTTER, DANIELLE	1,283.26	193	19	WATKINS, GEORGE L & JANICE A	417.86
24	38	GENTILE, ELLEN M. & ROBERT J.	352.93	126	1	DELLA SALA, GLENN & ANN	352.93	194	9	SUMMERS, LARRY & ANN	1,102.04
25	1	BATAILLE, SR., EUGENE P. & JULIA B.	4,467.77	126	11	KOLLARIK, THOMAS V. & SUSAN R.	2,926.32	195	24	DUHAMEL, JAMES J. III & TRACEY L.	4,153.57
25	13	NOLTY, RICHARD F SR & CAROL N	2,963.04	126	18	SIMMONDS, MARGARET WARD	92.91	195	49	BOYTON, HAROLD W. & ADELE B.	209.93
25	18	SANTIAGO, RICHARD & TONYA L	1,521.92	128	30	KATZ, NATALIE & HAROLD-CO-TRUSTEES	209.93	196	4	MORRISON, RICHARD & MARYANNE	415.96
25	20	SANCHEZ, DAVID	209.93	130	2	ECKENSTEIN, ROBERT & ANTOINETTE	209.93	196	8	KELLY, PETER & JENNIFER	84.42
26	3	RIDDLES, ANNE E. & REED, DEBORA A.	4,505.09	132	14	BARBERIO, JOSEPH & ELLEN	209.93	198	4	ROVAYO MANUEL & IVETTE	1,212.35
27	3	BLANDING, EUGENE C. AND JENNIFER	1,859.24	132	16	BAIN, DIANNE	209.93	198	11	REBMAN, PATRICIA	2,823.77
27	10	PHILLIPS, ROBERT & CONSTANCE	617.52	134	4	REED, THERESA E & HOUSEL, DAVID B	192.27	199	22	CANNALONGA, THOMAS & ADRIENNE S.	209.93
32	1	SELLA, MICHAEL G. & KELLY A.	352.93	135	1	PRICE, CONSTANCE & DEMETRIS R	1,030.86	199	23	LOWERY, DARRELL & TRACY	2,694.90
33	6	HUNTER, DWAIN A & RODRIGUEZ, SAMANTHA	209.93	135	6	ALVARADO, MIGUEL & ELVIRA	1,486.95	199	29	BUSH, JOHN (V)	352.93
34	1	SCHIRRIPIA, PETER	352.93	135	7	JACKSON, APRIL	209.93	200	8	GONZALEZ, FRANK & MARIA	209.93
34	18	PAYNE, TREVOR D & JOANNE L	209.93	135	27	GUARINO, LAWRENCE	9,645.16	200	17	LEON, CARLOS T & CECILIA	209.93
35	14	STARK, GARY W. & STARK, DENISE	224.42	136	2	HOUSEL, DAVID & REED, THERESA	352.93	201	3	TANZOLA, JOHN & KATHERINE M	13,858.47
36	4	ZENCHAK, PATRICIA	209.93	136	16	HAMBLIN, RUDOLPH & LAVERA A	209.93	201	4	MCKAY, LISA	1,384.48
41	13	SUTTON, JEFFREY S. & SUSAN M.	352.93	136	22	GREENLEAF, STEVEN & STACY	2,951.48	201	13	ZELIFF, MARK & JOANN	352.93
42	7	SCALINGI, ROBERT & LOIS ANN	352.93	137	7.02	GUZMAN, LUIS ARMANDO	3,114.09	201	38	GARCIA, YRMA & SECUNDINO	81.84
42	11	COLVIN, JR, FRANK M	209.93	137.02	18	RENNIE, KEITH & DONNA	2,220.80	201	55	BUCKELEW, JAMES F & ANNE	352.93
42	16	LARSEN, JAIME & GEORGEANN	1,334.50	138	2	TOCA, FREDDY R. & NIEVES, LOURDES	352.93	201	66	HIDALGO, ESTUARDO N & DELEON, MILDRED	352.93
42	17	ROSS, KENNETH & JO ANNE	352.93	139	13	ROSS, JON E	209.93	202	7	CONROY, THOMAS J. & DIANE S.	5,883.32
43	2	MEMBRENO, MARIA	1,865.29	139	19	ROSADO, WILFREDO	352.93	202	10	QUADREL, RANDY & JILL	209.93

# Program Offers Taste of Many Cultures

The Multi-Cultural Program at Roosevelt Elementary School is the highlight of art teacher Glenda Posey's year. The art and music teachers collaborated in this endeavor along with the classroom teachers.

In music class with Sharon Perez the children learned songs from around the world. Each grade concentrated on a different continent. Kindergarten studied Africa; first grade, Australia; second grade, Asia; third grade emphasized Europe and fourth grade highlighted North and South America. Teachers incorporated writing into the projects, which were displayed in the hall along with work from art class.

Activities included an evening concert. Parents and children enjoyed making crafts from around the world as well as a variety of ethnic food.

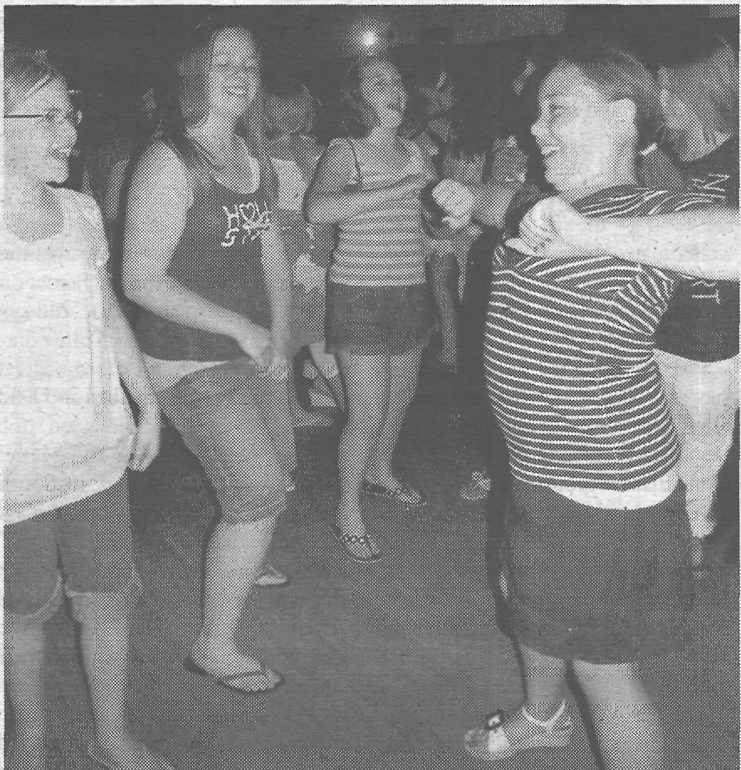


Sixth grade students enjoy an evening of dancing while raising money for an upcoming Stokes State Forest trip.

## Students Dance The Night Away

By Jane Dornick

Grant Elementary School PTO recently held a dance to raise money for the upcoming Stokes State Forest Trip for sixth grade students in October. DJ Mike from Downwire Entertainment spun the tunes for the evening. Pizza was from Salerno's; soda donations were from the Santone Family; candy from Somerset Concessions and chips from Herrs. The event raised \$2,300 to be used toward the cost of the trip.



## PUBLIC NOTICE

### TAX SALE NOTICE

#### NOTICE OF SALE OF PROPERTY FOR NONPAYMENT OF TAXES, ASSESSMENTS AND/OR OTHER MUNICIPAL LIENS

Public notice is hereby given that I, Richard Lorentzen, Collector of Taxes of the Borough of South Plainfield, in the County of Middlesex, will sell at public auction on, **Thursday, June 19, 2008** at the South Plainfield Municipal Complex, Council Chambers, 2480 Plainfield Avenue, South Plainfield, New Jersey, at 10:00 am or at such later time and place to which said sale may then be adjourned, all of the several lots and parcels of land assessed to the respective persons whose names are set opposite each respective parcel as the owner thereof for the total amount of municipal liens chargeable against said lands respectively, in accordance with N.J.S.A. 54:5-1, et seq. as computed to the 19th day of June, 2008.

Take further notice that the hereinafter described lands will be sold for the amount of the municipal liens chargeable against each parcel of said land assessed as one parcel, together with interest and costs to the date of sale. Said lands will be sold at the lowest rate of interest bid, not to exceed 18%. Payment for said parcels shall be made prior to the conclusion of the sale in the form of cash, certified check or money order, or parcels will be resold. Separate checks are required for payment of property taxes and for sewer fees and partial payments will not be sufficient to remove these items from the sale. Properties for which there are no purchasers shall be struck off and sold to the Borough of South Plainfield at an interest rate of 18%.

At any time, before the day of the sale, I will accept payment of the amount due on any property with interest and costs. Payments must be in the form of cash, certified check or money order. Industrial Properties may be subject to the Spill Compensation and Control Act (N.J.S.A. 58:10-23.11 et seq.), the Water Pollution Control Act (N.J.S.A. 58:10A-1 et seq.), and the Industrial Site Recovery Act (N.J.S.A. 13:1K-6 et seq.). In addition, the municipality is precluded from issuing a tax sale certificate to any prospective purchaser who is or may be in any way connected to the prior owner or operator of the site. The lands to be sold are described in accordance with the last tax duplicate as follows:

#### TAX SALE LIST

BLOCK	LOT/QUAL	OWNER NAME	AMOUNT	BLOCK	LOT/QUAL	OWNER NAME	AMOUNT	BLOCK	LOT/QUAL	OWNER NAME	AMOUNT
209	12	ALPERT, MARTIN & ELAINE	209.93	282	51.07	NORTHEAST DEVELOPERS, INC.	4,144.48	390	1	ERRICKSON,F&C/O BORO AUTO WRECK.	9,101.55
211	4	GRIMALDI, DAVID M & SHERRI L	352.93	282	52	ROSE, CECIL & LEIBOWITZ, MARIA ROSE	6,246.43	390	2	ERRICKSON,FRED & CAROL	235.72
213	8	BOWE, MELVIN E & YVONNE	264.18	282	59	HOLTERMANN, ERIK	1,255.78	400	3	CONTRERAS, JORGE M	209.93
215	3	COLVIN, FRANK	209.93	282	62	ABOOSAMARA, LEON N. & KIM M.	3,451.02	400	5.01	LEACH, JOSEPHINE C GURRACI	1,412.48
222	1	BIT HOLDINGS FIFTY-THREE INC	2,123.80	282	70	CONROY, JAMES J. & KAREN A.	352.93	402	1	CONE, JR. GEORGE A. & DOREEN M.	209.93
222	8	SMITH, KENNETH & KATHLEEN	352.93	282	82	LOPEZ, ANGEL B. & GLORIA C.	209.93	404	1	RHEIN, GREG	352.93
222	30	DISCH, BRYAN & MAUREEN	1,770.22	283	1	INTSIFUL, GEORGINA & JOSEPHINE A	352.93	404	16	PATTERSON, DANIEL R & JENNIFER E	352.93
222	31	CLEVINGER, KENNETH & ANNE MARGARET	2,806.20	283	4	NAGY, DEREK & DAWN S.	352.93	404.03	35	MEISENBACHER HOMES LLC	2,540.90
222	54	JACKSON,JACQUELINE&DASILVA,SHAHIEDA	2,485.73	284	7	PIN OAK TECHNOLOGY LLC	196.88	404.05	6	CAMPOS, RAUL L. & EVA F.	1,833.64
227	15	TOMEI, ROMALDO R & PATRICIA(WS)	689.70	295	6	CHARLESTON, MELVIN SR. & JACQUELINE	209.93	405	9	SIKANOWICZ,THOMAS G.	352.93
228	21	KNIGHT, EVELYN	206.49	297	3	MEALHA,JOHN&MARIA&AMORIM,JOSE&DEBRA1	230.87	406.02	1	TURNER,WAYNE &RAYCENE SMITH TURNER	352.93
229	10	CABRERA, JOSE	3,616.61	298	1	JA & JM ASSOC., L.L.C.	19,402.81	406.02	16	PREMIER FORECLOSURE COMPANY LLC	5,752.81
229	21	SIMPSON, RONALD & ANGELA	6,835.80	302	1 C0005	LEO, ROBERT & ELIZABETH	1,762.98	406.02	31	CARDEN, WANDA	352.93
229	46	ALSTON,GREGORY & BRENDA	1,558.04	306	2	COLVIN, HELEN	13,570.62	406.02	35	AGNEW, DAVID L.	209.93
232	6	MOLINARO, MICHAEL & KATHY	352.93	306	3	COLVIN, HELEN	548.37	406.03	2	GARCIA, LIGIA	4,152.47
233	11	HOH, ANTONIA J.	5,858.50	306	4	COLVIN, HELEN	1,529.11	406.03	18	WEEKS, TRENELL	352.93
233	27	CWIEKALO,MICHAEL G. & SUSAN	209.93	307	1	COLVIN, HELEN	1,282.57	407	25	RUIZ, CARLOS & OFELIA	209.93
234	29	MILLER, HERBERT W & HELBERG, DORCAS	130.88	307	2	COLVIN, HELEN	3,350.01	415	10	RODRIGUEZ,MANUEL & NORA	3,445.76
235	8	SCHURR, JOHN F. & ANNMARIE	1,135.83	308	25	MIELE, BARBARA A.	1,332.01	415	17	VILLAGOMEZ, JORGE & EDGAR	209.93
238	8	BAYAK, PATRICK & PATRICIA	1,599.79	308	44	GREEN,JR, EUGENE & MIHALIK, SUSANNE	640.85	415	19	SUDEALL,PETER L & FEELEY-SUDEALL,V	352.93
238	11	GASTER, JOHN & LEONE W	6,634.99	308	51	C0001 SMITH,CHRISTOPHER & CRAIG,MECHELE	352.93	418	15	ARBOLEDA, OSCAR	1,908.34
238	22	PELECH, DAVID & HEIDI	209.93	310	27	C0001 BENOWITZ, MARK & CARMELA M	209.93	420	3	HILL, EVELYN	5,581.54
238	24	STAFFIN, ARTHUR S&JOYCE	3,695.68	311	49	PORTILLO-FUENTES, NELSON	3,006.46	420	9	LORCO TOOL & EQUIPMENT CORP	1,324.40
241	13	KELLER,ROBERT C. & CATHERINE C.	209.93	311	50	BARRERA, RICARDO & JULIO & GEORGINA	352.93	420	11.031	RP & EC, LLC	196.88
241	17	PATEL, NARENDA & SHOBHA	1,650.08	313	3	RINGEL, RANDOLPH B. & AMANDA	5,970.22	425	5	F & M DECORATORS, INC. A NJ CORP	5,313.60
245	8	FRANCHAK,DAVID M. & ELVIRA	209.93	313	8	TOCA, GERMAN R	3,806.06	428	7.01	ACUNA, E & I & DEOCADEZ, J	3,143.96
245	16	RIVERA,JR,GILBERTO & RIVERA,VANESSA	352.93	313	10	ELDRIDGE, TERANCE J	3,704.66	429	1	WEBER, MARION B	509.69
249	8	JULIANO, ANGELO M	1,531.06	313	14	PENA, ANA A	352.93	429	2	WEBER, MARION B	352.93
249	18	LAKE, WILLIAM & STACEY	352.93	313	18	RICHARD, ADRIAN D & DEBRA R	352.93	433	2	MILLS, JOHN D & EVE	1,176.36
249	23	MARTIN, PRUDENCE	209.93	314	7	O'NEAL, ERIC & LORETTA	352.93	437	2.01 C0002	APPROVATO, FRANK A.	352.93
249	32	GONZALES,CONO & MARTHA E.	1,867.11	315	8.02 C0001	BEISWINGER, HELEN & COSTA, ETHEL	1,429.46	437	6	GUERRA, INEZ	369.82
249	66	PELECH,DAVID M. & ZAMPELLA,HEIDI M.	354.85	315	16.01 C0001	ANDREW, ANDREA	209.93	438	2	ARGUELLO, MARCOS & MARITZA	4,910.45
254	3	KRIYA REALTY CORP (ATTN.PATEL)	5,166.10	315	25	AREVALO, JOSE R & JOSE M	209.93	446	1.04	ELARA REALTY, LLC	1,094.64
254	17	ROSATO, JOANNE	1,148.32	315	31	SIMKO, GEORGE & JUDY	109.10	447	5	ADA REALTY	4,791.02
254.02	3	INIGO, ERMINE & MILAGROS	7,335.66	315	33	SIMKO, GEORGE AND JUDY	110.32	448	4.03	GRUVER,III,CHARLES & KIMBERLY M.	640.85
254.02	6	NASER, JOSEPH I & RASHA JAMIL	209.93	315.02	3	C0003 BERBERABE, DORIE	209.93	451	3	FANTAUZZO, JOHN, ESTATE OF	664.38
254.02	7	EVANS,JR,WILLIAM&LINDA&CYNTHIA	352.93	315.03	2	C0001 BLAIR,ROBERT JR. & ROBERT SR.	1,470.70	468	4	RICCA REALTY RENTAL GROUP LLC	2,531.94
254.03	3	CAINES, RAYNARD & BETTY	7,639.46	315.04	3	C0001 TAYE, ABEBA & ALAMEREW, ASHENAFI	209.93	472	2.01	RYDER TRUCK RENTAL INC.	163.71
254.03	4	LEO, STEVE	352.93	316	9	ANESH, FRANCIS P & NOLA M.	209.93	472	29.01	MURRAY, PATRICK	698.12
254.03	10	JOHNSON, TYRONE B. & INGRID H.	768.52	317	16	SERRO, ANTONIO & ANNA	209.93	474	1	FRIENDWELL INVESTMENT L.L.C.	8,045.25
255	13.01	PS.M. REALTY, L.L.C.	21,845.90	318	1	COLEMAN,CHUNCEY L.R.	1,678.16	476	1.05	SUSHMAA REALTY LLC	196.88
255	13.03	CRUSADER SERVICING CORPORATION	2,105.84	318	13	RICE, DONTE & TAMARA	1,405.90	477	4.01	RYAN STREET, L.L.C.	20,473.90
255	24	PATEL REALTY, LLC	25,898.69	319	1	LEIGHTON, ROBERTA D.	644.70	497	2.04	DOSHI, DINESH & SOHANGAL, SANTHOSH	241.02
256	1	D S C OF NEWARK CORP	28,065.84	319	11.02	CISSON, GREGORY J.	6,075.19	498	2	DANIELS, EDWARD-J	1,674.69
258	4	PUBLIK, FRANK J. & HELEN M.	440.88	319	17	JANKOSKI,M. & STANISLAO,D.LE	1,491.94	498	4	KHAN, MERFOOZ	352.93
258	6	OMONIA HOLDING CO., INC.	214.35	324	3	BENSON,HAROLD & ALETA	2,426.36	524	9	STELLAKIS, JOHN & GANIARIS, PETER	352.93
258	6.01	OMONIA HOLDING CO., INC.	3,223.95	324	4	GRATTA, TRACEY JOAN & THOMAS J	209.93	528	4	BORRE, CARL & NANCY	1,559.42
258	9	GANARIS,PETER & STELLAKIS, JOHN	449.39	325	5	REEDY,WILLIAM T.JR. & EILEEN M.	1,217.43	528	17	BROGDON, TERENCE	352.93
258	11	STELLAKIS JOHN & GANIARIS PETER	14,502.77	327	5	BALKARAN, RAMGOOLAM & CHANDRAWATI	352.93	528	26	SALAMANCA, ALFONSO & LUIS & MIGUEL	4,388.52
259	8	BUY-RITE AUTO STORES, INC	12,275.11	327	6	GHAJ,HARINDER SINGH&HARJINDER KAUR	196.88	528	43	C0123 WILLIAMS, DAVID L	5,692.36
259	10	OMONIA HOLDING CO., INC.	254.41	327	18	HSBC BANK USA NA	352.93	528	43	C0236CAPONE, RAYMOND	1,389.42
260	11.01	BHIRO,JAMES & BADEWATTIE	209.93	328	15	DE ROSE, JASON	352.93	528	43	C0312BISHNOIE, ANIL	209.93
261	11	HOUSEL, DAVID B. & REED, THERESA	352.93	330	9.01	RIVERA, JOHN E & ROMAN, JESSICA	195.66	528	43	C0427PHILLIPS, LANDRA & MILLIGAN, DARREN	209.93
261	12	BHIRO, JAMES & BADAWAITTE	354.85	331	1	POLISH NATIONAL HOME	4,612.18	528	43	C0432SAKONG,SOK HWA & HYUNJUUNG	209.93
264	21	ASCENCIO,CHRIS J.&ROS&HERNANDEZ,L.	1,538.93	331	3.01	POLISH NATIONAL HOME INC.	174.29	528	43	C0522PATEL, MUKESH & GEETA M	3,978.86
264	22	TRAN, LINH	352.93	333	1	LAMITEX INC & CRD REALTY	2,304.55	528	43	C0524 GASPHER, JR, DANIEL	352.93
265	11	GANIARIS, PETER & STELLAKIS, JOHN	860.11	333	3	LAMITEX INC/CRD REALTY CO	597.69	528	43	C0614 GANGWAL, MANISH	77.17
265	31	APPROVATO, CHARLES M & FRANK & PAUL	1,803.40	334	1	LAMITEX INC/CRD REALTY CO	1,417.00	528	43	C0631 WINDSOR FUNDING CORP & BELL, ERIC D	352.93
267	16	IBRAHIM, NABIL & IBRAHAM, MAHA	1,541.92	335	11	FEDERAL NATIONAL MORTGAGE ASSOC	3,212.91	528	43	C0638 LIMAYE, AVANEESH S & VARTAK, SEEMA	209.93
267	19	MAGANA, A & LOPEZ, C & SANCHEZ, H X	354.85	336	1.03	DAVIS, WILLIAM & ANGIE HUNTER	209.93	528	43	C0731 FADAYOMI,BOROJI	352.93
268	2	TORRES, SANDRA N	2,218.46	336	2	ALVAREZ,MARGARET T. & MERCEDES A.	352.93	528	43	C0821 GASPARD, DANIEL & MANUEL	209.93
269	10	KONYA,CHERYL & RON R.	209.93	336	9	BAKER, EUGENE F	76.41	528	43	C0823WOODS, THELMA	209.93
270	5	PENDER, ELIZABETH ANN	776.67	337	13	RUIZ, JULIO C. & IRIS	354.85	528	43	C0828AHMED, RASHED & SHAHIN	209.93
272	4	SZEMAN,MICHAEL A. & MELISSA M.	352.93	338	3	ROSADO, ALEX & MICHELLE	352.93	528	43	C0836TUMMALA, SHYAM & BALLA, MADHAVI	209.93
273	14	CHEPULIS, THOMAS W. & REMA H.	1,784.28	338	7	RAGHUNANDAN, JAGROOP K & ANDREA D	209.93	528	43	C0935CHAO, YUEN YU & CHENG, YUEN CHING	209.93
276	3	DE MARTINO ET UX THOMAS	571.49	339	6	FRANKLIN, SYLVIA	131.81	528	43	C1035LUND, VEGAESH KUMAR & PAMIKA	78.18
276	7	MISZCZENSKI, STANLEY F JR & NANCY	352.93	343	6	FRANCZAK, ANTONI L. & DONNA L.	354.85	528	43	C1122BLARDONY, G & KIM, H & COQUIA, K	209.93
277	1	MIGUEL, MARK	498.00	345	3	GALARZA, ADA	1,177.06	528	43	C1205HUDSON, SHEILA D	209.93
277	5	LABRUTTO, JANICE M	209.93	346	5	GRASSO, MICHAEL & ANTONIO & TOMASSO	555.00	528	43	C1304BACHIA, DAVID K	352.93
277	13.01	PORCHETTA, MARIO	475.38	346	11	TRAN, LE & THANH M	209.93	528	43	C1308PATEL, PRASHANT B & MITAL AMIN	352.93
280	8	PIREZ,ARMANDO & ANA MARIA	352.93	348	13	HARBIN, JOAN	1,295.77	528	43	C2601 TRIVEDI, CHINTAN & PATEL, BANSARI	209.93
280	10	BARCA, JOHN G	640.85	348	17	STRAZ HENRY & BEVERLY	4,444.52	528.02	18	BUNUAN, ERNEST & JOSEPH	76.99
281	6	RIVERA, CYNTHIA	209.93	353	3.06	FASANO, LOUIS	793.56	528.04	38	HUGHES, JUSTIN	352.93
281	16	ALVAREZ, SANDRA	5,777.99	353	6.01	YAWORSKI, CAROLYN C/O PEG.YAWORSKI	189.95	528.04	42	FRANCO, DON M. & TWYLA D.	12,121.93
282	7	KOWALSKI, LEON A & DIANE C	1,647.54	358	2	LAMITEX INC & CRD REALTY	2,935.95	531	2	ROBINSON, JAMES E & VINESSA T	352.93
282	30	KYFFE, WILLIAM J & CATHERINE J	1,376.28	362	6.02	SHAH, PRAKASH	3,059.13	532	13	HUBER, MICHAEL & TINA	352.93
282	50.02	NORTHEAST DEVELOPERS, INC.	3,382.40	363	8	BARKALOW,MARK S. & EVA L.	2,683.01	534	2	ASPK JAIPUR LLC	261.00
282	50.04	NORTHEAST DEVELOPERS, INC.	4,906.54	365	1.08	KEARNEY, JOHN L & ANNA MARIA	2,255.18	534	3	SHARDA VESHNO CORPORATION	106.65
282	50.05	NORTHEAST DEVELOPERS, INC.	3,382.40	365	14	GARRY, MICHAEL & ROBERTA	1,085.85	535	1.01	A S P K JAIPUR LLC	8,337.89
282	50.06										

## Middle School Trip to Remember

(Continued from page 1)

was a nurse and teacher who was also an EMT on the bus," said Scrudato, who ventured out on foot with another parent to get additional water and food for the students. According to Scrudato, the pair asked for assistance from a homeowner in the vicinity who drove them several blocks to a convenience store and a McDonald's where they bought 100 chicken nuggets and 50 orders of French fries to bring back to the tired, thirsty crew. Upon arriving back at the bus, they found that the group had already been transported to a nearby fire station in Rosedale by an emergency MTA bus requested by the fire department. Aside from dining on fast food, everyone enjoyed snow cones from Mom & Pop's snow cones across the street from the fire station.

The bus was repaired, but the stu-

dents wanted to wait for their classmates to be released from the hospital and return home with them. The group left at 9:15 p.m. and arrived in South Plainfield at around 2:40 a.m.

Scrudato said, "The chaperones did what they had to do. In my eyes the eighth graders were the real heroes on the trip." He explained that students were helping entertain each other during the long wait and others helped carry ill students off the bus and held the IV bags of their friends after the ambulances arrived at the scene. "That's what we do here in South Plainfield; we help each other. It's a trip these students will never forget," said Scrudato. Kelly Buttrico, who was chaperoning her daughter Casey, said "Even though the bus was fixed, the kids didn't want to leave without their classmates in the hospital. So we waited for them. It was touching to see how they all helped each other and pitched in." Novak said, "I've bragged about these kids all year, how great they are, and now they are really heroes. I was so proud of how they pulled together. I will never forget it." Novak also applauded parent chaperones Scrudato, Conrad and Tangorra, and said, "I am anxious to go back again."



Riley School first graders (L-R): Dayanora Tavaréz, Erica Ewing, Brenden Hedden and Shawn Callanan.

## Art in the Main Office Program At Riley School on Display

Barbara Harris, art teacher at John E. Riley Elementary School, recently selected a new quartet of students for the "Art in the Main Office" program.

Four first graders in Jennifer Merritt's class had their art work framed for display in the main office of the school. These students are Shawn Callanan, Erica Ewing, Brenden Hedden and Dayanara Tavaréz. The first graders had been learning different printmaking tech-

niques. Their art project combined a stamped spring flower garden print superimposed over a collaged tissue paper background. The art works will be on display during June, through the summer and into the new school year.

The art work on the bulletin board in the background are mixed media Greek temple relief collages with mosaic borders. They were created as part of Harris's unit on Ancient Greek art by Amy Leso's second grade class.

## Visit County's New Land Records Web Site

Middlesex County Clerk Elaine M. Flynn is pleased to announce that a new and improved Middlesex County Clerk Land Records Web site is now up and available from 5 a.m. to 11 p.m. daily to the public at the following Web address: <https://mcrecords.co.mid.dlesex.nj.us/records/index.jsp>.

Land Records Search Data is available from 1950 through the present. Users can print a copy of the document(s) for free with a watermark on it, or if they wish, can follow the instructions on how to set up an account with the clerk's office to print a copy of the document(s) without the watermark.

Complete instructions also are available on the Web site on how to utilize the searching functions as well as registering for an account.

For more information, visit the Web site or contact the Middlesex County Clerk's Office at (732) 745-3365 during normal business hours: 8:30 a.m. to 4:15 p.m. Monday through Friday.

### 27 Convenient Locations

#### Extended Lobby Hours

Contact: **Darlene Pinto**  
908.561.9160 • 4900 Hadley Center Drive  
So. Plainfield, NJ 07080

**Skylands**  
Community Bank

Community People...Local Decisions

Member FDIC

[skylandscombank.com](http://skylandscombank.com)

## LEGAL NOTICES

BOROUGH OF SOUTH PLAINFIELD  
MIDDLESEX COUNTY, NEW JERSEY

### LEGAL NOTICE

#### NOTICE TO BIDDERS

The Borough of South Plainfield invites sealed bids for:

#### BULKY WASTE COLLECTION SERVICE

Notice is hereby given that sealed bids will be received and opened by the Municipal Clerk at the Municipal Building, 2480 Plainfield Avenue, South Plainfield, New Jersey on **Tuesday, August 19, 2008** at 10:00 AM prevailing time. All bids must be addressed and delivered to the Municipal Clerk on or by the designated hour.

Bid documents may be obtained from the Municipal Clerk's Office in person or by calling (908) 226-7605. A fee of \$50.00, payable to the Borough of South Plainfield must be received by the Borough prior to the release of any bid packages. Only bidders who have picked up specifications will be allowed to submit bids.

Bids shall be enclosed in a sealed envelope addressed to the Municipal Clerk, Borough of South Plainfield, Municipal Building, 2480 Plainfield Avenue, South Plainfield, New Jersey 07080. The name of the bid must be printed on the face of the envelope.

Bids shall be made upon the Standard Proposal Form. Any bid guarantee required will be so specified in the bid documents for that item.

A bid bond in the form of a cashier's check, certified check or bid bond payable to the Borough of South Plainfield, in the amount equal to 10% of the highest bid amount, but not to exceed \$20,000.00.

Attention is called to the Federal requirements regarding employment non-discrimination and safety and wage rates.

Bidders are required to comply with the requirements of N.J.S.A. 10:5-31 e seq. and N.J.A.C. 17:27.

ATTEST:  
Joann Graf/Acting Municipal Clerk

\$53.20

June 6, 2008

BOROUGH OF SOUTH PLAINFIELD  
MIDDLESEX COUNTY, NEW JERSEY

### LEGAL NOTICE

#### NOTICE TO BIDDERS

The Borough of South Plainfield invites sealed bids for:

#### STREET SWEEPING AND CLEANING SERVICE

Notice is hereby given that sealed bids will be received and opened by the Municipal Clerk at the Municipal Building, 2480 Plainfield Avenue, South Plainfield, New Jersey on **Thursday, June 19, 2008** at 10:00 AM prevailing time. All bids must be addressed and delivered to the Municipal Clerk on or by the designated hour.

Bid documents may be obtained from the Municipal Clerk's Office in person or by calling (908) 226-7605. A fee of \$50.00, payable to the Borough of South Plainfield must be received by the Borough prior to the release of any bid packages. Only bidders who have picked up specifications will be allowed to submit bids.

Bids shall be enclosed in a sealed envelope addressed to the Municipal Clerk, Borough of South Plainfield, Municipal Building, 2480 Plainfield Avenue, South Plainfield, New Jersey 07080. The name of the bid must be printed on the face of the envelope.

Bids shall be made upon the Standard Proposal Form. Any bid guarantee required will be so specified in the bid documents for that item.

A bid bond in the form of a cashier's check, certified check or bid bond payable to the Borough of South Plainfield, in the amount equal to 10% of the highest bid amount, but not to exceed \$20,000.00.

Attention is called to the Federal requirements regarding employment non-discrimination and safety and wage rates.

Bidders are required to comply with the requirements of N.J.S.A. 10:5-31 e seq. and N.J.A.C. 17:27.

ATTEST:  
Joann Graf/Acting Municipal Clerk

\$53.20

June 6, 2008

## BUSINESS/PROFESSIONAL/SERVICES

### LOOKING FOR RESULTS?

Ask any one of our Business & Professional advertisers, and they'll tell you that to get results, you've got to advertise consistently.

Call the Observer at 908-668-0010 to start getting results for your business.

### AUTO BODY

**R&C** Family Owned & Operated Since 1962  
**AUTO BODY**

Expert Color Matching  
24 Hour Towing  
Lifetime Repair Warranty

Lic. No. 00992A

**908-757-1933**

3330 Park Ave., South Plainfield

**SULLIVAN'S**  
**AUTO BODY**

BodyShop Lic. #02313A

Hours Mon-Fri 8am-5pm  
2210 Hamilton Blvd.  
South Plainfield  
New Jersey 07080

**908-757-5100**  
Fax: 908-757-3105

### COMPUTERS

**COMPUTER REPAIR**  
— IN SOUTH PLAINFIELD —

**TUNE-UPS \$50**

(Flat Rate - South Plainfield only)

- Hardware/Software (A+ Certified)
- Networking (Network + Certified)
- Website/Database (I-Net + Certified)

Specializing in off-site computer repair

**Cell: (732) 589-4596**

### CONSTRUCTION

References Available  
Fully Insured  
N.L. License #13VH00353600  
**HARTJE** Residential Contractor  
**CONSTRUCTION COMPANY**  
Additions • Bathrooms • Kitchens  
• Decks • Windows • Siding  
**908-754-8921**

### DRIVEWAY SEALING

PREMIUM DRIVEWAY PROTECTION  
**KleenSeal**  
**DRIVEWAY SEALING**  
**732-321-3699**  
[www.kleenseal.com](http://www.kleenseal.com)  
Franchises Available

### ELECTRICAL CONTRACTOR

**On Time Electrical Contractor LLC**  
Residential • Industrial • Commercial  
No Job Too Small  
908-451-3313  
On Call 24 hrs.  
Fully Insured & Bonded NJ  
Lic #8854  
BILL RITCHEY

### HANDYMAN SERVICES

**Bullseye**  
**HANDYMAN SERVICES**  
NO JOB TOO BIG OR TOO SMALL  
Providing All of Your Home Improvement Needs  
Call Tom (908) 222-8247  
or Jim (908) 208-0431  
Call Today for Your Free Estimate

### JUNK REMOVAL

**JUNK REMOVAL**  
**WE TAKE ANYTHING!**

Any Item Removed!

**A.J.'S JUNK REMOVAL**  
(908) 229-4831

### MASONRY

**Luigi BOTTONE MASONRY**  
ALL TYPES OF MASONRY  
Every Job is Owner Supervised  
CALL FOR FREE ESTIMATE  
**732-926-8686**

- Steps/Porches
- Sidewalks
- Brickwork
- Brickpavers
- Patios
- Belgian Block Curbing
- Foundations
- Driveways
- French drains
- Chimneys

### PAINTING

**MEHL BROS.**  
**PAINTING & DECORATING LLC**  
Interior Painting, Crown Moldings & Architectural Millwork  
**(908) 251-1814**  
Call for a Free Estimate

### PAVING/MASONRY

**MARK L. DiFRANCESCO**  
**PAVING • MASONRY**  
Free Estimates  
Driveways • Parking Lots • Seal Coating • Steps • Walkways • Patios  
Retaining Walls • Pavers • Wallstone • Slate • Bluestone • Excavating  
Foundations • Block Work • Cultured Stone • Drainage • Waterproofing  
3RD GENERATION IN BUSINESS  
**908-668-8434**

VIEW CLASSIFIEDS ON THE WEB  
at [www.spobserver.com](http://www.spobserver.com)

# Classifieds

## HELP WANTED

**BUSY DOCTORS OFFICE SEEKING**  
full time receptionist, no exp. necessary.  
(732) 205-1311.

**CHHA-IMMED. OPENING, 3 DAYS,**  
9am-12pm, \$12/hr. Other jobs avail., \$11/  
hr. Car required to reach clients. (732)  
246-8900.

**CROSSING GUARDS-SOUTH**  
Plainfield area. Must have car and  
phone. Call (201) 795-0189.

**NURSES/LPNs, RNs, CHHA-IMMEDIATE**  
opening. F/T, P/T, per diem. Retirees/new  
nurses welcome. Will train for cases. Mer-  
cer, Middlesex & other areas. (732) 246-8905.

## HELP WANTED

**DRIVERS:**  
**TIME'S WASTING**  
**TT/OTR DRIVERS NEEDED!**  
Great Starting Pay & Assigned Trucks  
Paid Orientation & Vacation  
EXCELLENT BENEFIT PACKAGE  
Class "A" CDL Required

1-800-362-0159

[www.lctjobs.com](http://www.lctjobs.com)



Transportation Services

**EARN EXTRA  
\$\$ MONEY \$\$**  
Deliver Phone Books  
Middlesex County

- Work Your Own Hours
  - Have Insured Vehicle
  - Must Be At Least 18 Yrs. Old
  - No Experience Necessary
  - Clerks and Loaders Needed
- 800-247-4708  
[www.sddsinc.com](http://www.sddsinc.com)

## HOME FURNISHINGS FOR SALE

**MATTRESS-NEW QUEEN PILLOW,**  
top sets, new in plastic with mfg. warranty.  
**Queen \$165 King \$295.** (732) 259-0016.  
**MATTRESSES-NEW PLUSH FIRM**  
sets still in plastic. Twin \$175 Full \$200  
Queen \$250. Call (732) 259-6690.  
**BEDROOM SET-6 PCS. BEAUTIFUL**  
cherry all wood w/sleigh bed, Value \$3000  
sell \$1000. Call (732) 259-0016.

## OFFICE SPACE FOR RENT

**SOUTH PLAINFIELD**  
To share with attorney. Two offices avail-  
able; private restroom and shared con-  
ference room. Wireless access & utilities  
included. Very competitive rates. Please  
call (917) 749-2905; leave message.

## HOUSE FOR RENT

**HISTORIC LANDMARK HOUSE FOR**  
RENT-3 BDR, 2 car garage, gardener's  
dream in North Plainfield. Contact Jill  
at P&R Enterprise (201) 839-5961.

**SO. PLAINFIELD-4 BDRM, 2 BATH,**  
nice neighborhood, \$1850/month. Call  
(908) 578-5095.

## IMMEDIATE DEBT RELEASE

We will buy your home or  
take over your payments.  
Upside down, no equity, no problem!  
Gina 888-383-0010

## PHOTOS FOR SALE

**OBSERVER PHOTOS TAKEN BY**  
Patricia Abbott from 2007 graduations,  
plays, concerts and other events are avail-  
able for purchase. All photos are in color.  
2007 photos will be deleted as of the end  
of June. Call (908) 346 2290 or E-mail  
angelonly@aol.com.

## FREE: PICK UP YOUR METAL

**WE WILL HAUL AWAY FOR FREE**  
anything made of metal you do not  
want-washing machines, dryers, A/C  
units, lawn mowers, cars, etc. Get rid  
of your junk laying around... AT NO  
CHARGE. Call Tim (908) 208-2413.

## GARAGE SALES



**183 Oak Tree Ave.**  
(South Plainfield)  
**Fri. & Sat., June 6 & 7**  
**9 a.m.-4 p.m.**

*Multi-Family, antiques,  
collectibles, household items  
and more*



**\*\*1/2 PRICE SALE\*\***  
**1210 So. Ninth St.**  
**Fri. & Sat., June 6 & 7**  
**ALL DAY!**

*Dog & cat houses, wishing wells,  
birds, butterflies & wooden mail tags.*

What you're looking for...

**IT'S IN THE  
CLASSIFIEDS**

**\*\*WEB SPECIAL\*\* RUN YOUR AD ON OUR  
WEB SITE FOR AN ADDITIONAL \$5!**

\$15 for three lines; \$1 for each  
additional line. *Copy Deadline: Monday,  
5 pm.* Run your ad 4 consecutive issues,  
get a 10% discount. Call 908-668-0010;  
or E-mail your ad to: [spobserver@comcast.net](mailto:spobserver@comcast.net).

## BUSINESS/PROFESSIONAL/SERVICES

### BUYING & SELLING - COINS & MORE

**TOP PRICES PAID**

**WE BUY & SELL**

All U.S. & Foreign Coinage, Gold & Silver  
Bullion, Vintage Sports Cards & Memorabilia  
And Anything Related

References available upon request

**Gregory S. Heim • 908-405-6408**

South Plainfield resident for almost seven years

**9 AM to 8 PM**

[www.gynandroidhead.com](http://www.gynandroidhead.com)

**WE WILL COME TO YOU!!**

### CARPETING

Carpet • Area Rugs • Tile • Hardwood • Laminate • Linoleum

**FREE ESTIMATES**

**Commercial and Residential**

*Wall to Wall, Sam lays it All!*

**Sam the Carpet Man**

**MY WAY CARPET**

1-877-GO-MYWAY  
1-877-466-9929

Fax: 908-756-4040 119 Hamilton Blvd. [mywaycarpet.com](http://mywaycarpet.com)  
South Plainfield, NJ 07080 [mywaycarpet@msn.com](mailto:mywaycarpet@msn.com)

Repairs • Restretching • Binding • Custom Tile • Sanding and Refinishing

### COMPUTERS

**Concerned About Computer Virus Protection? Home Security?**

For advice and installation, call Stan Wilkinson at

**ST Computers**

908-769-0709

- New Computers/Upgrades
- Hardware/Software Installations
- In Home Service
- Website Development

Cell: 732-423-3504  
Visit us at [www.stcomputers.org](http://www.stcomputers.org)

### FURNITURE REPAIR

**FURNITURE MEDIC**  
"the prescription for damaged furniture"

**Precision Furniture Repairs On-Site**

Scratches • Gouges • Pet Damage  
Water Marks • Burns  
Structural Repairs • Broken Joints  
Antique Restoration  
Kitchen Cabinets Refinished  
And MUCH MORE!

**(908) 755-8440**

### GENERAL CONTRACTORS

**BUILDER & GENERAL CONTRACTOR**

NJ DCA LIC #019771  
Since 1981

**Lordina Builders**

908-753-3850

ADDITIONS • KITCHENS  
BATHROOMS  
Office Renovations

**FREE ESTIMATES**

### GUITAR LESSONS

**GUITAR LESSONS**

Beginner to Advanced

**908-822-9702**

**SOUTH PLAINFIELD**

**All Styles**

**Kenny Campbell**

[www.kennymusician.com](http://www.kennymusician.com)

### HOME IMPROVEMENT

**PAINTING**  
INTERIOR/EXTERIOR  
SHEETROCK/DRYWALL  
HOME REPAIRS  
CERAMIC TILE

**AJ**  
Professional Services, Inc.

**SIDING**  
ROOFING  
SIDEWALKS/PAVERS  
MASONRY  
STEPS

**HOT POWER WASHING**

**HOUSES - DECKS - SIDEWALKS**

SEAMLESS GUTTERS & GUTTER REPLACEMENT

**Tel: 908-754-0149**

Fully Insured - SBA cert. 10404-20 License #13VH03110900 Bonded

### MASONRY

Chuck Sonion  
Free Estimates

**(908) 754-5969**  
Fax (908) 754-5569

**SONION CONCRETE**

Sidewalks • Patios • Driveways • Pavers

South Plainfield, NJ 07080 *Fully Insured*

### MASSAGE

**CENTRAL JERSEY**  
Holistic Health Center and Spa

MASSAGE REFLEXOLOGY  
HYPNOSIS REIKI

DOULA LABOR ASSISTANT

Roxanne Cortese, CD, CHP, CMT

2701 Park Ave. So. Plainfield, NJ 07080  
(908) 561-1511  
By Appointment Only

GIFT CERTIFICATES AND GIFT BASKETS

### MULCH/TOP SOIL/STONE

Call **KLK Trucking** for:  
Top Soil, Mulch, Sand, Infield Mix, Decorative & Crushed Stone

Sanding • Salting • Snowplowing  
Pick up or Deliv., Mon. thru Sat

**908-757-4434**

265 Ryan Street  
South Plainfield

### PAINTING

**SMALL TIME PAINTER**

*No Job Too Small or Too Big!*

**(908) 548-8799**

### PERSONAL TRAINER

**THE BODY YOU WANT**

- Certified Personal Trainer • Personalized Programs
- For All Ages • Weight Gain / Weight Loss
- Sports Specific Training • Cardiovascular Training

**AFPA Certified**

**Body Fit Personal Training**

Ask About Our Discounted Rate  
Fully Insured For On & Off Site Training  
**Call for a Free Consultation**  
Gary Muccigrossi  
**908-754-8492**

### PLUMBER

**Professional Plumbing & Heating Inc.**

(908) 561-1941

South Plainfield, NJ

**FRANK MCCARTHY**

License #8741

### POOL SALES/SERVICE

(908) 756-3120

**Schedule your pool opening now!**

**McCarthy Contractors**

Complete Pool Maintenance & Repair  
Pools-Ponds-Water Features  
WE SELL & INSTALL SAFETY COVERS AND DO LINER CHANGES

**SALES AND SERVICE**

Blaise McCarthy  
Member of NSPA  
20 Years Experience

Fully Licensed & Insured • SOUTH PLAINFIELD

### ROOFING

**J.T. PENYAK ROOFING CO.**

COMMERCIAL INDUSTRIAL  
RESIDENTIAL

**908-753-4222**

[www.penyakroofing.com](http://www.penyakroofing.com)

3571 KENNEDY ROAD  
SO. PLAINFIELD, NJ 07080

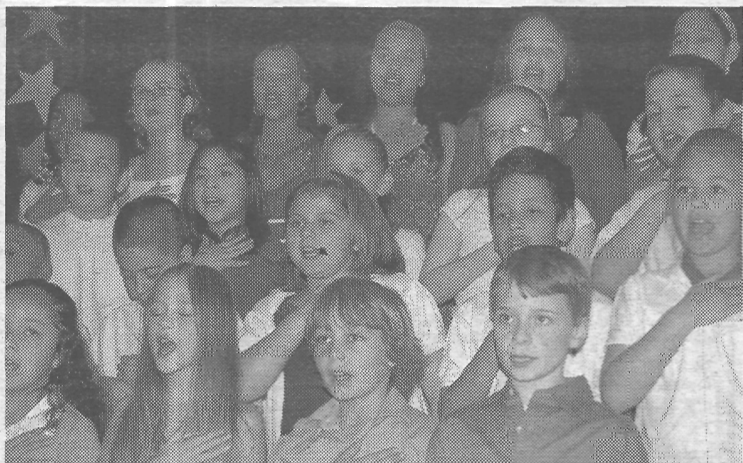
### TRUCK SALES

**CAMBRIA, GMC**

136 Talmadge Rd., Edison, NJ  
1-800-899-5226 X-110

**Ask for Tony**  
FINANCING AVAILABLE

2007 GMC C4500 PICK-UP-330 Hp  
Duramax diesel, auto, air, p-seat, p-icks,  
p-win, cruise, tilt, leather int., CD player,  
bedliner, loaded! Montrose Pick-Up body.



Students perform at the Riley School spring concert.

## Patriotic Theme at Riley School Spring Concert and Art Show

By Patricia Abbott

On May 12 John E. Riley School invited parents, friends and the community to enjoy their annual Spring Concert and Art Show.

The hallways were filled with colorful artwork created by Riley students of all ages. Parents and guests browsed through the works before and after the show.

The concert portion opened with the Third Grade Recorder Ensemble, directed by Joanne Gurske, followed by the third and fourth grade orchestra, conducted by Sarah Bruce and the Riley School Band, conducted by Tobie Baldwin.

The Riley School Chorus, directed



SPVFD President Daryl Forster and Camryn Schaeffer

by Joanne Gurske, gave their final performance. Gurske wanted to incorporate the school's "Character Counts" program with a patriotic theme. "Our chorus concert was meant to be a celebration of patriotism and citizenship. To that end, we invited our local leaders, including the mayor, members of the council, assemblymen, state senator, police, fire, rescue and any active military person. We wanted to express our appreciation for the service they give and help the children understand how important it is to be of service, whatever service they choose," Gurske explained. The final two songs were especially touching, "American Tears" and "You Are Our Heroes."

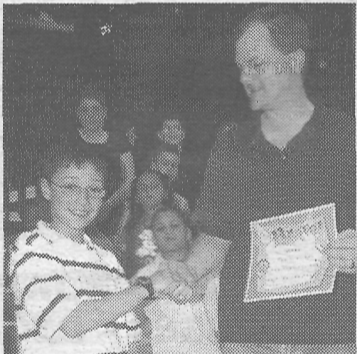
Honored with certificates were the following:



U.S. Marines Captain Todd Schunk and Stefanie Melchiorre

Daryl Forster, representing the South Plainfield Volunteer Fire Department (SPVFD). Forster has seven years active service and currently holds the position of vice-president. He is the father of Megan, a third grade Riley student.

Glen Ewing is a life member of the South Plainfield Rescue Squad and currently serves as treasurer. He is a nurse and belongs to an organization called "Healing the Children," which provides surgery for children in third world countries. He, along with his wife Joy, travel with this organization. He is the father of Riley students,



Glen Ewing, Rescue Squad member, and student Daniel Hedden

Paige and Erica.

U.S. Marines Captain Todd Schunk served as an active member of the U.S. Marine Corps for six years and is currently a member of the Marine Corps Active Reserves. He is the father Riley kindergartener, Connor.

## Ruth Marion Smith Cupo, 80

Ruth Marion Smith Cupo died peacefully in her sleep on Monday, May 26 in the Gensis Eldercare Network at The Woodlands in Plainfield.

Born April 28, 1928, she was the eldest daughter of Helena Lempka Smith and Roy K. Smith of Schenectady, N.Y.

Mrs. Cupo graduated from Draper High School in Schenectady at the age of 15. Near the end of World War II, she was employed as a secretary for the government through the General Electric Company in the department of radio and radar countermeasures, which required a top secret clearance. After the war, Mrs. Cupo graduated from Ellis Hospital Training School for Nurses and worked at Glenridge Nursing Hospital and Ellis Hospital as a night nurse and operating room nurse.

In 1952, she married longtime friend Everard N. Cupo and raised three sons.

An accomplished singer and pianist, Mrs. Cupo was active in the choir of the Second Reformed Church of Rotterdam, N.Y. After retiring, she enjoyed reading, needlework, crossword and jigsaw puzzles and music. She was also a lifelong fan of the New York Yankees and New York Giants.

In 2006, due to deteriorating health, Mrs. Cupo moved to South Plainfield to be near her youngest son's family. She later moved into The Woodlands nursing facility where she joined a wonderful community of residents and staff who encouraged her to participate in many activities and became her friends.

Surviving are her devoted husband of 55 years, Everard N. Cupo of Plainfield; three sons, John J. Cupo and wife Lynn of North Las Vegas, Nev., Steven R. Cupo and partner, Dr. Daniel L. Engeljohn of Washington, D.C., and Michael E. Cupo and wife Alicia of South Plainfield; seven grandchildren, Stephanie of Feasterville, Pa., David Cupo, Michael Cupo, Jeffrey Cupo, Joseph Cupo, Audrey Cupo and Christopher Cupo all of South Plainfield and two sisters, Shirley Lefevre of Beverly Hills, Fla. and Lee Eldredge of Abington, Mass.

A graveside service was held in the Viewland Cemetery, Rotterdam, N.Y.

Funeral services were under the direction of McCriskin-Gustafson Home For Funerals.

**HOMETOWN HEROS**  
**SEND-A-PLATTER**

We will send to any home a beautifully arranged and wrapped Assorted Sandwich Tray with two of our homemade salads-Any Day-Any Time.

\$49<sup>95</sup>

908-755-HERO (4376)

## Hazel (Figler) Fodor, 86

Hazel (Figler) Fodor died on Tuesday, June 2 at JFK Medical Center in Edison.

Born and raised on Staten Island, Hazel had resided in South Plainfield since 1993.

A homemaker, Mrs. Fodor served with the U.S. Army during WWII and was a member of the Staten Island VFW Gold Star Post Ladies Auxiliary.

An avid bingo player, Hazel enjoyed sewing, crocheting, reading and spending time with friends. In addition, she was also a member of the South Plainfield Senior Citizens.

She was predeceased by her husband, Alexander, who passed away in 1994; a son, John, who died in 2004; a sister, Margaret "Tiny" Kuzma and a brother, Edwin "Ace" Figler.

Surviving are two sons, Kenneth and wife Debbie of Staten Island and Donald and wife Debbie of Dunellen; a sister, Helen "Sweets" Reho of Monroe and two brothers, Henry Figler of Toms River and Bernard "Bim" Figler of Florida. Also surviving are six grandchildren, Melissa, Billy, Caiti, Andrew, Alexandra and Kevin Fodor.

Funeral services were held at McCriskin-Gustafson Home For Funerals.

## Joan E. (Ivan) Moran

Joan E. (Ivan) Moran went to the Lord on June 2 after a short, but courageous, battle with cancer. She was born on April 9, 1939 in Fords to the late John and Helen (Winkler) Ivan.

After graduating from Woodbridge High School with the class of 1956, she was employed by the N.J. Bell Telephone Company (now Verizon) in Woodbridge until leaving to raise her

family in 1968. A former resident of Morgan, she relocated with her family to South Plainfield in 1982.

Returning to the work force, she was employed by the Rutgers University Athletic Department. She retired after 20 years as an administrative assistant in the Athletic Support Department at Hale Center in Piscataway.

She was a past member and former president of the Rutgers Fanees, a support group for Rutgers Athletics. She was also a member of Sacred Heart Parish in South Plainfield and the Silver Knights, a Rutgers Retirees Organization.

After retirement, she volunteered for the Auxiliary at JFK Hospital in Edison. As Baby Alumni Chair, she oversaw fundraising to purchase equipment for the Maternity Ward and Children's Pediatric Unit.

Joan's great sense of humor and sharp wit endeared her to all who knew her.

She is survived by her loving husband of 43 years, Richard W.; a son, Daniel and wife Deirdre of Kendall Park; a daughter, Patricia and husband Robert Micks of Cedar Park, Texas; a sister, Evelyn and husband Steve Topolancik of Morgan; a twin brother, John and wife Nancy Ivan of Edison; two brothers-in-law, Daniel and wife Priscilla of Milltown and James and wife Evelyn of Whiting Township and seven grandchildren, Thomas, Francis, Bridget, James and Henry Moran, Ryan and Riley Micks and numerous nieces, nephews, cousins and friends.

Her family would like to extend their gratitude for all the care and kindness shown by the staff of JFK Hospital and JFK Hartwyck at Oak Tree, as well as that of friends, relatives and co-workers.

Funeral services were held at McCriskin-Gustafson Home For Funerals.

Hillside Cemetery

Regarded as one of the most beautiful cemeteries in the East

Scotch Plains

908.756.1729

www.hillsidecemetery.com

It is far easier for your family if you plan ahead

"An Independent, Family Owned & Operated Funeral Home"

HOME FOR FUNERALS, LLC

(908) 561-8000

2425 Plainfield Ave., South Plainfield, NJ 07080

PRE ARRANGEMENTS • S/S MEDICAID PROTECTION • CREMATION SERVICES

James A. Gustafson, Pres./Mgr. • N.J. Lic. No. 4205  
Richard W. McCriskin II, Vice-Pres./Dir. • N.J. Lic. No. 4564  
Richard W. McCriskin, Dir. • N.J. Lic. No. 3147  
William C. McCriskin, Dir. • N.J. Lic. No. 3382

www.mccriskinfuneralhome.com

WHERE ELSE CAN YOU GET WEEKLY COVERAGE  
ON THE BOROUGH WHERE YOU LIVE?

Subscribe to the Observer—  
the best way to find out  
what's going on in your town.

✓ Please send me home delivery of the Observer

NAME \_\_\_\_\_

ADDRESS \_\_\_\_\_

CITY, STATE, ZIP \_\_\_\_\_ PHONE \_\_\_\_\_

CREDIT CARD NO. (MC OR VISA) \_\_\_\_\_ EXP. DATE \_\_\_\_\_

Follow the ups and downs of the borough in the Observer, an independent newspaper for South Plainfield. Send check or money order for \$25/one year (out-of-town-\$30) to: South Plainfield Observer, 1110 Hamilton Blvd., Suite 1B, South Plainfield, NJ 07080. For more information, call 908-668-0010.

\* \* We now accept VISA and Mastercard \* \*

## After all, you "shop" for other things.

We apologize for using the word "shop," but the fact is, for most people a funeral service is a major purchase and families want to prevent overspending. Preplanning is the best thing a family can do to avoid spending too much. Let us answer any questions you may have.

2456 Plainfield Ave. • South Plainfield, NJ 07080  
(908) 756-2800

www.southplainfieldfuneralhome.com

Franklin H. Rainear, Jr., Manager, N.J. Lic. No. 4543  
Tamara L. Hawbaker, Director N.J. Lic. No. 4577  
Glenn J. Scarponi, Director, N.J. Lic. No. 4411