

SP PUBLIC LIBRARY
SPFLD PUBLIC LIBRARY
2484 PLAINFIELD AVE
S PLAINFIELD NJ 07080-3531

South Plainfield Observer

VOL. 11, NO. 26

MEMBER NEW JERSEY PRESS ASSOCIATION

50 CENTS

FEBRUARY 29, 2008

Sgt. Trista Moretti's Legacy Memorialized in Locker #2198

The second floor hallway of South Plainfield High School was filled with relatives, teachers and friends of Sgt. Trista Moretti as school principal Dr. Kenneth May unveiled her locker, #2198, last Thursday evening.

On June 27 Sgt. Trista Morretti, 27, was killed while serving in Iraq. Trista, who graduated from South Plainfield High School in 1998, was an avid field hockey player and a member of the winter and spring track teams. She excelled at sports and practically everything else in which she was involved.

Dr. May explained that the reason for dedicating Trista's locker was to

show all who enter the high school that Trista was a student who left South Plainfield High School a better place than when she first entered.

Before unveiling her locker, Dr. May said, "Today, we remember Trista Moretti as an energetic and progressive young woman going places, actively seeking the experiences of life and growing accordingly. She was a student, a soldier, an athlete, a role model, and a patriot. But, for many of us she was more. She was a friend. Today it is good that we remember that friendship, for because of it we share a common bond of friendship among ourselves."

"Tonight we will transform this place to a healing ground. Today we go even further. For some this will now be a special place to visit. You see, since summer, we have begun not just a journey of personal healing, we have also begun a mission to rescue our community, our family from pain and anguish," he concluded.

The locker door is made of plexiglass and shows Trista's army uniform, her high school jacket with her letters from field hockey and track, her field hockey stick and several pictures taken while she was in high school as well as when she was in the army.



Municipal Clerk Vinnie Buttiglieri

Buttiglieri Resigns, Accepts Job in Ocean Township

Next Monday night's agenda meeting will be Vinnie Buttiglieri's last meeting as borough clerk in South Plainfield. Buttiglieri handed in his resignation effective March 5 and will take the position of Ocean Township Borough Clerk.

In the 80-year history of the Borough, there have been just five people who have served as borough clerk.

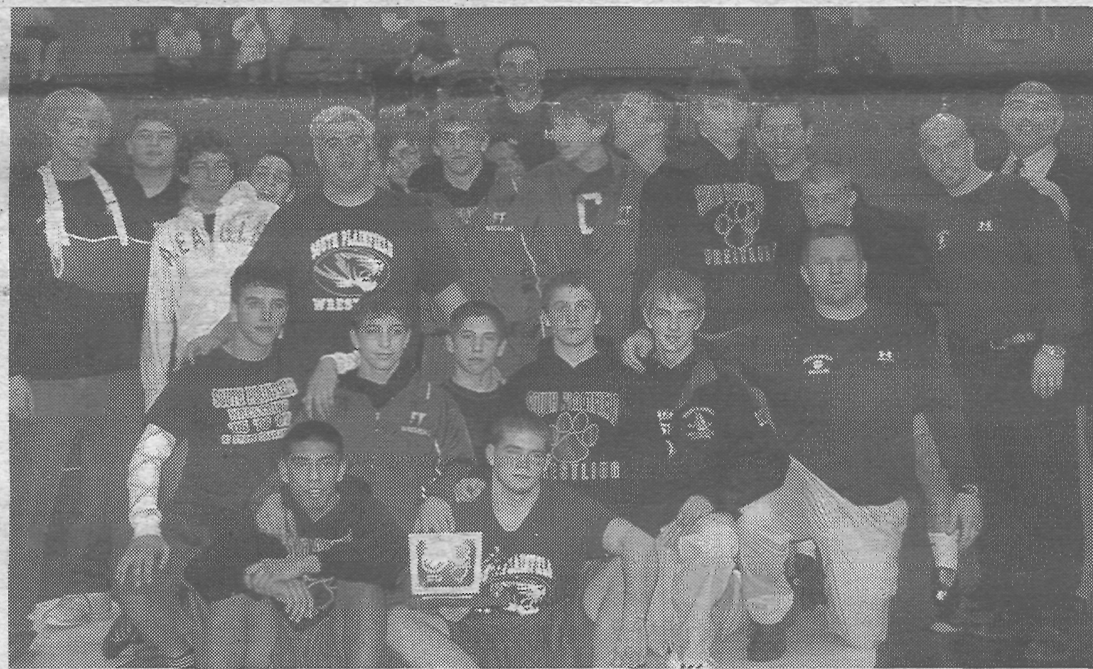
Buttiglieri has been a resident of South Plainfield for more than 17 years. He was elected to the Borough Council in 1995, where he served for six years. He was appointed borough clerk in March of 2001 and named borough administrator in April 2002.

In his resignation letter, Buttiglieri said that he is proud to have been a part of the many improvements which took place during his years as a councilman and borough clerk, including the senior center, the expansion of the PAL building, the Fireman's Memorial and Monument Park.

"The clerk's office should be the first place residents go when they need help navigating the choppy waters of government. In all humility, I know we made the clerk's office a friendly and accessible place for everyone," said Buttiglieri. "Thank you to my assistants, Marie and Diane, for making everyone feel at ease and for being problem solvers," he added.

Buttiglieri said that even though he will be working in Ocean Township, he plans on staying right here in South Plainfield.

SPHS Tigers Wrestling Team - NJSIAA District 12 Champions



Congratulations to SPHS Tigers wrestlers who captured the NJSIAA District 12 Tournament Title on February 23. Athletes who took individual titles are Nick Heilmann, Ryan Sacco, Joel Santos, Mark Wagner and Jon Conroy. Athletes who moved on to the regionals are Nick Vallone, Seth Yokum, Rocco Petriello, Rick Szeliga, Jeff Conroy and Don Pompilio.

Forensic Auditor to Examine School Budget

By Libby Barsky

As it undertakes the task of structuring the 2008/2009 school budget, the Board of Education (BOE) does so without knowing the amount of surplus in the 2007/2008 budget. To aid in that endeavor, they have hired a forensic auditor to take a close look at the budget to examine the "significant projected surplus of which the board was unaware," said Board President Jeff Seider. The name of the forensic auditor was not disclosed.

According to an audit report performed by Gary Vinci of Lerch, Vinci and Higgins of Fair Lawn last year, the annual audit for the school budget for 2006/2007 showed the district ending the fiscal year on June 30, 2007 with total liabilities and fund balances of \$2,446,200 and with \$1,508,468 for encumbrances due to vendors who hadn't been paid because their paperwork had not been completed.

At that time, an unreserved fund balance of \$546,639 in cash was declared and an excess surplus of \$198,424 was to be returned to the taxpayers in the form of tax relief in July 2008. According to State law 1701, a school district's surplus cannot exceed two percent of their total budget—anything over that amount must be returned to the taxpayer as tax relief.

The following statement was read by Board President Jeff Seider: "With the departure of the former BOE business administrator, the board commissioned an audit of the present budget. The auditor recently completed an analysis and has determined the existence of a significant projected surplus of which the board was unaware. In view of the board's concern about the auditor's findings, it has requested an investigation by a forensic auditor. On February 6, 2008 Superintendent Negron contacted the

county superintendent to inform him of the board's concerns. We expect the forensic auditor's investigation will provide answers to the many questions we have, and those we expect members of the public will have as well."

Four Announce Candidacy for BOE

Four candidates will be running for three open seats on the Board of Education (BOE) this April.

Incumbents running for seats are Carol Byrne and Timothy Morgan. Also running are former BOE member Steve Bohn and Sharon Miller, who ran unsuccessfully last year.

School board candidates have until Monday, March 3 to withdraw their names before names are officially drawn to establish their position on the ballot.

Along with electing three school board members, voters will also be

asked to approve a school budget for next year. The BOE will adopt a tentative budget at a special meeting on Monday, March 10 at 6 p.m.

Budget works sessions are scheduled for Monday, March 3 in the Roosevelt Administration Building at 6 p.m. This is a work session meeting, no public comment will be taken, but the public is invited to attend.

The BOE election will be held on Tuesday, April 25.

A candidate's night is scheduled for Tuesday, March 25 at Kennedy School at 7 p.m.



Locker #2198 has been "retired" and decorated as a memorial to Sgt. Trista Moretti, SPHS Class of 1998, who was killed in Iraq last June.

Inside
February 29, 2008

- Letters.....2
- Hall of Fame.....3
- Events.....4, 5
- SPHS PTA.....6
- Highlights.....6
- Sports.....8
- Obituaries.....9
- Police Report.....11
- Cultural Arts Comm. "Love Letters".....12
- Area Churches.....13
- Lenten Services.....13
- BOE Notes.....13
- Classifieds.....15
- Junior Journalist.....16
- Bookmarks.....16

SHS has a sweet time at Valentine's Day Dance... see page 6.

COUNCIL MEETINGS air on Mondays at 7:30 p.m.

AGENDA and/or Other SPECIAL Meetings air every Saturday at 8 p.m.

(Check community bulletin board for last minute time changes.)



The February 20 BOE Public Meeting will air on Comcast Channel 74 Thursdays at 7:30 p.m. until the next public meeting on Wednesday, March 19. Comcast will air two hours of a meeting. To purchase a copy of a complete Borough Council or BOE meeting, contact the Observer.

council meetings

Meets twice a month on Mondays, except as noted.* All meetings begin at 7 p.m. Borough Hall Council Chambers • Questions? 908-226-7605

Agenda Meeting	Public Meeting
Monday, March 3	Monday, March 10
Monday, March 17	Monday, March 24
Monday, March 31	Monday, April 7
Monday, April 14	Monday, April 21

All meetings of the Governing Body are held in accordance with New Jersey Open Public Meetings Act (NJSA 10:4-6 et seq) in the Council Chambers at 2480 Plainfield Avenue.

planning board

Meets second and fourth Tuesday of the month, *except where noted. Borough Hall Council Chambers, 7 p.m. • Questions? 908-226-7641

March 11, March 25, April 8, April 22, May 13, June 10, June 24, July 8, July 22, Sept. 9, Sept 23, Oct. 7, Oct. 21, Nov 18*, Dec. 9*.

zoning board of adjustment

Meets second and fourth Thursday of the month, *except where noted. Borough Hall Council Chambers, 7 p.m. • Questions? 908-226-7641

March 13 and 27, April 10 and 24, May 8 and 22, June 12 and 26, July 10 and 24, August 14 and 28, September 11 and 25, October 9 and 23, November 30*, December 11*.

board of education meetings

Roosevelt Administration Gymnasium on Jackson Ave. unless otherwise noted Committee of the Whole, Wednesdays 7 p.m. March 12, April 2 Regular Meeting Wednesdays 8 p.m. Feb. 20, March 19 and April 19.

recreation commission

Meets once a month on the second Tuesday of the month, except July and August PAL Building, Maple Ave. 7 p.m. • Questions? 908-226-7716

taxpayers advisory group

The Taxpayers Advisory Group (TAG) meets the fourth Tuesday of every month at Borough Hall, 2480 Plainfield Ave. at 7 p.m. Questions? 908-769-0786.

site plan sub-committee

Meets once a month on the third Tuesday of the month, 7 p.m. March 18, April 5, May 20, June 17, July 15, August 19, September 16, October 21, November 18, December 16.

environmental commission

Meets once a month (second Wednesday)

Borough Hall Conference Room, 8 p.m. • Questions? 908-226-7621

March 12, April 9, May 14, June 11, July 9, August 13, September 10, October 8 November 12, December 10 and January 14.

business advisory group

Meets once a month (first Wednesday)

Borough Hall Council Chambers, 5 p.m. • Questions? 908-757-8100

traffic safety advisory commission

Meets on the fourth Wednesday of the month at 7 p.m. in the Conference Room, Borough Hall

board of education curriculum/technology meetings

Meets once a month on Mondays at 8 p.m. in the 2nd floor conference room at Roosevelt Administration Building on Jackson Ave.

South Plainfield Observer

The South Plainfield Observer is published every Friday

G&G Graphics, Inc.
1110 Hamilton Blvd. Suite 1B
South Plainfield, NJ 07080

(908) 668-0010
FAX (908) 668-8819

NANCY GRENNIER
Publisher/Editor-in-Chief
Web page:

www.sobserver.com
(updated every Thursday)

For subscriptions, advertising or information, call (908) 668-0010.

The publisher is not responsible for typographical errors.

WAYNE GRENNIER
Associate Publisher
SUSAN KANEPS
Art Director/Associate Editor

PATRICIA ABBOTT
Staff Writer/Photographer

LIBBY BARKSY
Staff Writer

CAROL GRENNIER
Editorial Assistant

JEAN FULTZ
NATIA KATSANTONIS
TARYN BILICH
Production Assistants

ROXANNE CORTESE
JANE DORNICK
Advertising Sales

The South Plainfield Observer (U.S.P.S. 018253) is published weekly, except Thanksgiving week, by G&G Graphics Inc. 1110 Hamilton Blvd. Suite 1B, South Plainfield, NJ 07080-2004. Second class postage paid at South Plainfield, New Jersey 07080-9998. POSTMASTER: Forward change of address orders to G&G Graphics Inc. 1110 Hamilton Blvd. Suite 1B, South Plainfield, NJ 07080-2004. Subscription rates \$25 per year in South Plainfield; \$30 per year out of town. To subscribe: 908-668-0010.

SUBMIT YOUR ARTICLES

We look forward to hearing from all of you and encourage you to send in your stories and photos. The South Plainfield Observer is your paper. Please let us know what you would like to see in it.

To get an article published in the South Plainfield Observer:

1. Type (double spaced) the article you wish published.
2. Mail, fax or drop it at: South Plainfield Observer, Editorial Department, 1110 Hamilton Blvd., Suite 1B, South Plainfield, NJ 07080 or drop it in the box at Mohn's Flowers on Plainfield Ave., fax us at (908) 668-8819 or e-mail us at spobserver@comcast.net. Include your name, address, telephone number.

LETTERS TO THE EDITOR

Letters may be submitted by mail to South Plainfield Observer, Editorial Dept., 1110 Hamilton Blvd. Suite 1B, South Plainfield, NJ 07080, by email: spobserver@comcast.net or fax 908-668-8819. Letters should not exceed 200 words. We reserve the right to edit for clarity or length. It is the editor's discretion to limit the number of letters submitted by one individual on the same subject. The opinions expressed in "Letters" do not necessarily reflect the opinion of the Observer. All letters must be submitted with name and phone number, for verification.

IN MY OPINION

The opinions expressed in this column are not necessarily those of the publisher.

Dear Editor,

What a surprise to see the front page headline, "Council Blocks New Market Extension" in the February 22 issue of the Observer. After being a resident of South Plainfield for almost 10 years it was a "no-brainer" that our small town politicians would turn the table once again with their own "majority" agenda. Like many residents I have always found the weekly editorials submitted by town leadership to be nothing more than the same old finger pointing and laying of blame—past, present and future. In this case it doesn't appear that most of our elected officials are capable of thinking outside the box with the exception of Joann Graf and her Alternate Truck Route Ad Hoc Committee. Most seem very content with just building their own soapbox.

The truck traffic and how it is routed through our town has been an ongoing issue since the initial Helen Street project was proposed. After the truck route was moved from Hamilton to New Market, significant monies were spent on repaving and beautification (decorative light posts, sidewalks, pavers, etc.). Was this for the benefit of the 1,500 daily truck drivers or the town residents? Perhaps the current "majority" hasn't noticed, but it actually looks quite nice, especially at night and gives our town a little bit of class, but then we aren't a "Starbucks kinda town" per our ex-mayor. Also, monies have already been spent on the New Market Extension since the multi-family dwellings have been purchased and demolished. So what does the new "majority" have planned for that space? More wasted tax dollars or sale to a supporter? And what is the political affiliation of the Traffic Safety Commission members who have already "blessed" the reversal?

It was very obvious after reading the article that the fact an elementary

school is on the route is being dismissed. Lt. Murtagh's opinion that the reversal would not pose a risk to the children walking to Roosevelt Elementary may come back to haunt him with the first child or crossing guard seriously injured or even worse, killed. How can you just add back all of those commercial vehicles to roads which are already heavily traveled without any increased risk? What about the hazardous materials being transported by some of those vehicles? Worst case scenario—hazardous spill due to an accident directly across from the school on Belmont. Is the town ready for that tragedy?

The two former and four present school board members who were in attendance should be ashamed of themselves for their failure to express any concerns. What about the obvious—like noise pollution and distractions for the students that will be generated by the hundreds of trucks going down Belmont passing the longest windowed section of the school? Since the board won't allow the use of air conditioning unless the classroom temperature reaches 76 degrees, the windows are the only source of fresh air. Has anyone bothered to consider the amount of diesel contaminants that will drift directly into these classrooms since they are within 100 feet of the "route"? What about when the children are at recess or gym and outside on the playground? I have no doubt someone on the town council will bring up the brilliant idea that the teachers will just need to keep the windows closed, the blinds drawn and the kids inside for the entire school day!

Can someone tell me another town that has consciously made the decision to route their truck traffic past an elementary school? It never should have been allowed in the first place and seems like a "no-brainer" to me!

TIGHE FALATO

Submit Letters to the Editor:

Please be advised that the Observer does not publish anonymous letters.

Letters may be submitted to the Observer, 1110 Hamilton Blvd. Suite 1B, South Plainfield, NJ 07080, or fax 908-668-8819 or by email: spobserver@comcast.net. Deadline is Monday, 5 p.m. Letters must be accompanied by a name and telephone number for verification. Please limit letters to no more than 200 words. We reserve the right to refuse a letter, to edit for clarity or length, and to limit the number of letters submitted on the same subject.

Dear Editor,

I rarely write letters to the editor, but after reading the letters sent in by two South Plainfield High School students, I felt obligated to tell a different side of the story. By no means do I wish to disregard or refute the claims made by the students; they are certainly entitled to their feelings and opinions. However, I do feel it important to state that my experiences with teachers and schools in South Plainfield have been very different from theirs.

My son is a junior at the high school and his years there have been very positive experiences. He has had the opportunity to participate in a wide variety of activities, had challenging, rewarding classes and has enjoyed several seasons of sports ranging from track to bowling to swimming. His teachers, coaches and counselors have consistently shown themselves to be caring, dedicated professionals who have given of their knowledge and their time—often coming in early and giving up their lunch time to meet with him and other students. This situation is not unique to the high school. During his time at Kennedy School, Grant School and the middle school, he was fortunate to have teachers and counselors who truly went the extra mile to help him learn and be successful.

I hesitated to send in this letter, wondering if some might think I had ulterior motives, that I was "looking" for some benefit from writing it. I hope that those people who know me will understand that nothing is further from the truth. My belief that there are at least two sides to every story led me to write this letter. I won't gain

(Continued on page 10)

PAIN?

Try therapy first.

Physical Therapy Center of South Plainfield

Theresa L. Conte P.T. Physical Therapist

(908) 668-1951

1110 Hamilton Blvd., South Plainfield

Orthopedic Rehabilitation • TMJ • Back & Neck Pain

Most Insurance Plans Welcome • Most HMO's / PPO's Accepted • Medicare Approved

SERVING UNION AND MIDDLESEX COUNTIES FOR OVER 15 YEARS



27 Convenient Locations

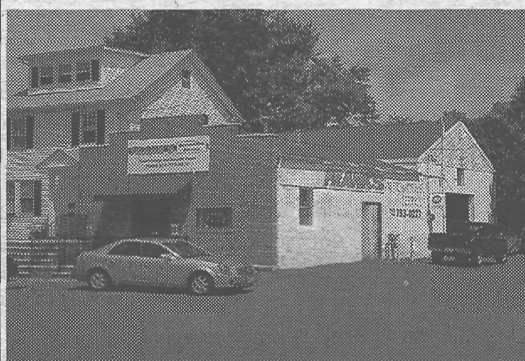
Extended Lobby Hours

Contact: Darlene Pinto
908.561.9160 • 4900 Hadley Center Drive
So. Plainfield, NJ 07080

Skylands
Community Bank

Community People...Local Decisions
Member FDIC

skylandscbank.com



1st Time Customers receive \$5 off on a Lube, Oil, and Filter Service or \$20 off any service over \$100.00

FRANK'S

1521 Park Ave
So Plainfield NJ 07080

franksautomotiveservice.com

Automotive Service

908-753-0277

An Invitation,
From Our Family To Yours!

Come in and let us show you the personal service we've been known for since 1989.

NOTES FROM The Senior Center

by Joann Graf, Director of Office on Aging

Property Tax Freeze Applications Available

The N.J. Department of Taxation has released the 2007 Property Tax Reimbursement Program (PTR) application. If you have filed a PTR previously, you will receive your 2007 PTR2 booklet in the mail. If you are 65 or older, own your own home and have never filed, we invite you to contact the Office on Aging at (908) 756-4135 and we will be happy to assist you. We have PTR1 applications available in the office.

The Property Tax Reimbursement Program, also referred to as "Senior Freeze," reimburses eligible senior citizens and disabled persons for property tax increases. The amount of the reimbursement is the difference between the amount of property taxes that were due and paid in the "base year" (the first year that you met all the eligibility requirements) and the amount due and paid in the current year for which you are claiming the reimbursement, provided the amount paid in the current year was greater. You must meet all the eligibility requirements for the base year and for each succeeding year, up to and including the current year to qualify for the reimbursement.

The eligibility requirements are as follows:

You are age 65 or older or receiving Federal Social Security disability benefits; and you have lived in New Jersey continuously for at least the last 10 years, as either a homeowner or a renter; and you have owned and lived in your home (or have leased a site in a mobile home park on which you have placed a manufactured or mobile home that you own) for at least

the last three years; and have paid the full amount of property taxes (or site fees if you are a mobile home owner) that were due on your home for the base year and for each succeeding year, up to and including the year for which you are claiming the reimbursement; and you meet the income limits for the base year and for each succeeding year, up to and including the year for which you are claiming the reimbursement.

Residents applying for the 2007 reimbursement must have total income for 2006 that is less than \$43,693 for single applicants and \$53,576 (combined income) for married couples, and total income for 2007 that is less than \$45,135 for single applicants and \$55,344 (combined income) for married couples.

The PTR program should not be confused with the Homestead Rebate. The Homestead Rebate program provides rebates for homeowners and tenants who occupied their principal residence in New Jersey on October 1, paid property taxes on that dwelling either directly or through rent, and whose gross income for the entire year does not exceed certain limits. The rebate amount is determined by income, filing status, and whether the applicant was age 65 or older or eligible to claim an exemption as blind or disabled for tax year 2006. The amount ranges from \$250 to \$1,200 depending on each person's eligibility status.

Rebate forms are mailed to homeowners, while renters may use Form TR-1040 in the resident income tax return packet to file for the rebate.

Scrudato Has a Change of Mind on Bond Ordinance

At last week's agenda meeting, Councilman Joe Scrudato voted "yes" to table the bond ordinance which would be used to purchase land for the New Market Avenue Extension.

Scrudato said that he voted to table the ordinance that evening because he felt there were too many unanswered questions. He explained that he is in favor of the New Market Extension and added he is against putting trucks back on Hamilton Boulevard, saying it is a safety issue.

At the beginning of Monday's council meeting Scrudato asked to have the ordinance re-introduced. Last week, when the ordinance was introduced, it was tabled before a vote was even taken.

When it came to a vote this time, Scrudato voted "yes" to the bond ordinance. However, the ordinance was defeated by a 4-2 vote. Scrudato said he had a week to study the ordinance and wanted it on record that he now is in favor of it.



The South Plainfield Business Association and Commerce Bank sponsored a well-attended wine and cheese networking evening recently. Guest speaker for the evening was Joel L. Naroff, Ph. D., Commerce Bank Chief Economist.

NEWS FROM THE Suburban Woman's Club

The members of the Suburban Woman's Club of South Plainfield will hold their monthly meeting on Thursday, March 6. The guest speaker at the meeting will be South Plainfield's "treasure," Joann Graf.

Graf is the director of the senior center. She is very active in environmental matters as an advocate for the people of the town. She has overcome many obstacles to become the capable woman she is today and it will be most inspiring to hear her story from her own lips.

Hostesses for the meeting will be Rose Cucurella and Ann DeMico. They will be serving tea, coffee and delicious refreshments to celebrate St. Patrick's Day. The color of dress for the meeting will be green. So all come with your green clothes and your Irish accents for an enjoyable meeting.

Don't forget to mark Sunday,

March 9 on your calendar. The Suburban Woman's Club will be sponsoring a performance of "The Playboy of the Western World" by the Circle Players, 416 Victoria Ave. in Piscataway. It will be a 2 p.m. matinee on Sunday afternoon. The tickets are \$17 (a bargain for the laughs you will have). The proceeds will be used to finance the scholarship fund and other local charities. Refreshments and door prizes will be the highlights of the intermission. Be sure to come.

Also, the next activity to mark on your calendar will be a yard sale at the American Legion on May 3. There will be plenty of bargains. See the club news for further information about this sale.

Please accept the sincere thanks of the members of the Suburban Woman's Club for your support of the activities which help us work for South Plainfield.

Submitted by Gloria Breuning
Publicity Chairman

Class of 1978 30 Year Reunion

Can you believe we're almost 50 and we graduated 30 years ago? The SPHS Class of 1978 reunion committee is looking for alumni interested in attending our 30th reunion this fall.

E-mail you name, address, and phone number to SPHS30YR@gmail.com or call (908) 755-0959 to get your name on our invitation mailing list.

Correction

• In last week's article on the vote to table the bond ordinance for the New Market Extension, the vote was not along party lines. The vote was 5-1. We regret the error.

Hall of Fame Applications Available

Applications for nominations to the South Plainfield High School "Hall of Fame" are now available.

The "Hall of Fame" was established at South Plainfield High School to recognize outstanding graduates. Honoring successful graduates as leaders in their fields provides current high school students with positive role models. Graduates of South Plainfield High School or a designated high school for South Plainfield students prior to 1957 are eligible.

Candidates nominated must have graduated from SPHS or the designated school at least 15 years prior to nomination. They must have achieved a prominent position with significant contribution in the listed criteria of academia, business, community participation, service to humanity and unique accomplishments.

Candidates selected will have their photographs and biographies displayed on the "Wall of Fame" at the high school. Also, honored candidates will be inducted at the high school academic recognition program held on June 3.

Nomination forms can be obtained from SPHS Principal Dr. Kenneth May during school hours. For more information, call (908) 754-4620, ext. 248.

Deadline for nominations is April 18.

AJV AUTO MALL

COMPLETE AUTO REPAIRS

NAPA Auto Care Center

Tire Center • Tune-Ups • Brakes • Exhaust • Mufflers • Oil Changes Alignment • A/C Repairs & Recharging

NAPA Credit Card 90 Days Same As Cash

OPEN 6 DAYS

732-424-0702

3201 Hamilton Blvd. So Plainfield



TBSA

SPORTS ACADEMY

SUMMER RECREATION & SPORTS CAMP

Basic Introduction to Baseball/Softball, Basketball, Volleyball, Soccer, Lacrosse, Field Hockey, etc.

Boys & Girls Ages 6-13
Starting June 23, 2008

- Enjoy All Sports & Recreation
- Children Stay Indoors
- Safe Environment
- 40,000 sq. ft. of Play Space
- 2 Snacks a Day
- Bring Your Own Lunch or Purchase Pizza!

"Parent Friendly" Hours
8:00 a.m. until 6:00 p.m.



TAKE ADVANTAGE OF OUR EARLY BIRD DISCOUNT!

SCHOOL CLOSED? CALL NOW TO RESERVE YOUR SPOT FOR SPRING RECESS

NEW FOR 2008... BOUNCE HOUSES!

www.tbsanj.com • 732-650-1224
76 Carter Drive • Edison, NJ

We Make It Easy For You.

Advertise in the March 21 Observer and you'll have access to the 10,000 homes and businesses in South Plainfield.

That's a lot of cheese.

South Plainfield
Observer

For information on rates and dates, call 908 668 0010.

You deserve it... take a mini vacation with Marty.



where you are always treated like one of the family

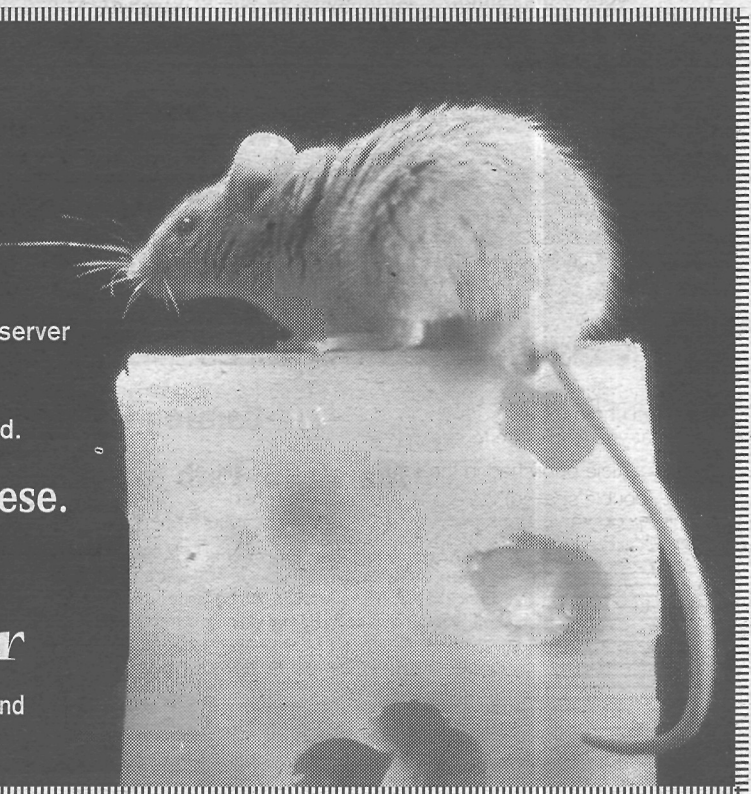
307 Oak Tree Ave.

"The Manicure"
Choose "Hot Oil" manicure, complete with hand & arm massage OR "Paraffin Dip" & regular manicure-\$16 (Seniors \$15 • Paraffin Dip Only-\$7)

"The Facial"
Includes skin analysis, cleansing, hot towels, steam, peel, extraction, face massage, decollete & mask-customized to the client's needs-\$50 (No hidden costs.)

908-668-8397
Flexible hours to suit your needs
Open Wednesday-Saturday
Gift Certificates Available

Coming Soon:
HOUSE CALLS



around town

Lenten Fish Dinners at Sacred Heart

February 29, March 7 & 14

South Plainfield Knights of Columbus and Sacred Heart Church are sponsoring fish dinners during Lent on Friday, Feb. 29 and on March 7 and 14. Dinners are served in Sacred Heart cafeteria on South Plainfield Avenue, 5 to 7 p.m. Menu features fillet of fish (fried, broiled, parmesan), cheese ravioli, manicotti, linguini, pizza, garden salad, rice pilaf, French fries, macaroni and cheese, cole slaw, coffee, tea or cold drink and dessert.

For info, call (908) 756-0633, ext. 10.

Eagles Football and Cheer Registration

March 1

The South Plainfield Eagles Football and Cheer registration for the 2008 season will be held Saturday, March 1, 10 a.m. to 2 p.m. at the Eagles fieldhouse on Kenneth Avenue. Registration is for boys and girls ages five to 13 (must be five by July 31, 2008).

Any questions, call Kevin or Kelly Dunn at (908) 668-5080.

VFW Country Breakfast

March 2

The South Plainfield VFW located on Front Street is holding a country

Is your organization holding an event? Publicize it in EVENTS AROUND TOWN.

E-mail your event to spobserver@comcast.net.

What's happening at the South Plainfield

SENIOR CENTER

FEB/MARCH

MONDAY	TUESDAY	WEDNESDAY	THURSDAY	FRIDAY
UPCOMING EVENTS Leadership-Path to Political Power Citizens' Campaign Class March 5 at 7 p.m. ... AARP Defensive Driving Class March 6 and 13 at 1 p.m.				Bingo 10am-2pm 29
Crocheting 9:30am-11:30am Yoga 10:30-11:30am Art Class 11:30am 3	Bingo 10am-2pm Ladies Social Group 10am 4	Aerobics 8:45 am Computer 10 am 11:30am, 1pm Crocheting 1pm Tai Chi 2pm Taj Mahal Trip 9am 5	Pathmark Shopping 9am Crafts Class 10am Computer Class 10am 11:30am, 1pm Exercise Class 1:15pm 6	Bingo 10am-2pm 7

TO SIGN UP FOR MEMBERSHIP IN THE SENIOR CITIZEN'S CENTER, VISIT THE CENTER.

breakfast on Sunday, March 2 from 8 a.m. to 11 a.m. Public is welcome. For information, call (908) 668-9751.

"Love Letters" at EVP Free Performance

March 2

The South Plainfield Cultural Arts Commission is sponsoring a performance of "Love Letters" by A.R. Gurney on Sunday, March 2 at 3 p.m. at the Edison Valley Playhouse on Oak Tree Road. The event is free to South Plainfield residents. Seating is limited and registration is required.

To reserve your tickets, call Pam Stefanek at (908) 754-238. Leave a detailed message including your name, phone number and the number of tickets required. Tickets are on a first-come, first-served basis and only to

those eligible (first 99 ticket holders).

Trip to Mary Poppins

March 2

The Recreation Department still has tickets for Mary Poppins. The show is Sunday, March 2. Bus leaves the PAL at 3 p.m. for the 6:30 p.m. show. Purchase tickets at the PAL on Friday, 8:30 a.m. to 5 p.m. Tickets are \$100.

Columbiettes Easter Bunny Brunch

March 2

The South Plainfield Columbiettes will host their annual Easter Bunny Brunch on Sunday, March 2 in the Sacred Heart School cafeteria. Doors open at 10:30 a.m.

Brunch consists of eggs, pancakes, French toast, ham, assorted breakfast

cakes and more. There will be games and prizes and the Easter Bunny will give out baskets to the children.

Cost is \$10 per person. Reservations can be made by calling Kathy at (908) 756-3772.

Empowering the People Seminar

March 5

Do you want a say in the decisions that affect your life? Learn effective techniques to advocate for issues before our local government at a free seminar presented by the Citizens' Campaign on Wednesday, March 5 at 7 p.m. at the senior center. The seminar is sponsored by the South Plainfield Business Association and the South Plainfield Observer. Seminar is free. Refreshments will be served.

Project Graduation Auction/Raffle

March 8

The SPHS PTA annual auction/raffle will be held on Saturday, March 8 from 6 to 11 p.m. in the high school gym. All proceeds go towards Project Graduation for the Class of 2008.



Mohr's
Flowers & Fancy Foods

Brighten up someone's day with a gourmet gift basket or floral arrangement.

2325 Plainfield Ave.
SOUTH PLAINFIELD
(908) 561-2808
Corporate Accounts Welcome

To make a donation or to be an auction volunteer, contact Sharon Miller at (908) 757-6843. For tickets, call Pat Fabino at (908) 757-6843.

American Legion St. Patrick's Dinner/Dance

March 8

The American Legion Chaumont Post 243 will host a St. Patrick's Day dinner/dance on Saturday, March 8 from 6 to 11 p.m. It will be an evening of fun, food and entertainment, featuring DJ and Piper. Tickets are \$15 per person. Children under 12 are half-price. Proceeds benefit the S.A.L. Squadron 243 scholarship fund.

For information, call (908) 668-9414.

Class of 1972, 1973 and 1974 Reunion

March 8

SPHS Classes of 1972, 1973 and 1974 will hold their combined reunion dinner/dance on Saturday, March 8 at 7 p.m. at the Clarion Hotel in Edison.

Anyone interested in attending should E-mail sphsclass1973@yahoo.com or call (908) 209-9314.

Spaghetti Dinner at St. Stephen's

March 9

St. Stephen's Lutheran Church, located at 3145 Park Ave., will be hosting an all-you-can-eat spaghetti dinner on Sunday, March 9, from 5-7 p.m. Free-will offering will be taken (suggested is \$5 for adults and \$2 for children). Beverage and dessert are included. No reservations needed. Proceeds will benefit charities. For information please call (908) 757-4474.

Suburban Woman's Club Theatre Party

March 9

The Suburban Woman's Club of South Plainfield is sponsoring a performance of "The Playboy of The Western World" by J. M. Synge, an Irish comedy on Sunday, March 9 at 2 p.m. by the Circle Players at 416 Victoria Place in Piscataway.

Tickets are \$17. Proceeds go towards the scholarship fund and other local charities.

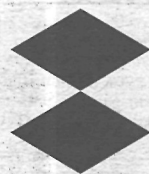
For more information, call (908) 757-3680.

Pilgrim Covenant Open House

March 12

Pilgrim Covenant Learning Center, Inc., located at 3121 Park Ave., is holding an open house on Wednesday, March 12 from 9 to 11 a.m. The Learning Center, a state certified pre-school and daycare with 37 years of

Do You Want a Say in the Decisions That Affect Your Life?



Seminar #3 – March 5, 7 p.m.
South Plainfield Senior Citizens Center
Leadership-Path to Appointed Power Forum

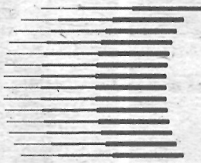
Learn how to take a leadership position on a South Plainfield board or commission. Represent your organization or community on one of these influential decision-making bodies. Make a substantial impact in your community. Lend your expertise to fellow leaders in South Plainfield.

SEMINAR
#3

Join us for the second in a series of four free seminars on Wednesday, March 5 at 7 p.m. at the Senior Center

Coming Up...

• March 26-Path to Political Power



The Academy for Citizen Empowerment (ACE) is the teaching arm of the Citizens' Campaign. ACE was founded on the principle that civic education can be the touchstone which will assist a civic renewal and which will help transform our cities and communities into examples of enlightened civic involvement. Its mission is to restore a culture of service in the state by giving residents the tools they need to become true participants and citizen leaders in their government.

SPONSORED BY

South Plainfield Business Association & South Plainfield Observer. For information, call (908) 922-2368 or (908) 668-0010.



Party Supplies
Bring in this ad and get **30% Off**
Everything in the Store including all St. Patrick's Day & Easter Balloons and Supplies & Wedding Invitations

Savings For Any Occasion
(908) 222-3315 907E Oak Tree Rd. (next to A&P)

around town

experience in childcare, offers a variety of programs for children ages 2½ to 5 years. Programs include both full and part-time classes, kindergarten enrichment and summer camp. Hours are Monday through Friday from 7 a.m. to 6 p.m.

For directions and information, call Gina Birath at (908) 756-4879.

Franklin School Auction/Raffle

March 15

Auction tickets are on sale now for the Franklin School PTO 12th annual auction/raffle to be held on Saturday, March 15 in the SPHS gym. Doors open 6:30 p.m. Ticket price is \$12. Prizes include a 50-inch flat screen TV, a \$3,000 gift certificate to First Class Travel, a Wii and a Playstation 3.

To purchase tickets or for more information, call Dorothea at (908) 753-7117 or Lynn at (908) 753-5532.

Elks Corned Beef & Cabbage Dinner

March 15

The South Plainfield Elks Veterans Committee will be sponsoring their annual corned beef and cabbage dinner at the Elks Club on New Market Avenue on Saturday, March 15 from 4:30 to 9 p.m. Adults \$12, children \$5. All you can eat, includes soda and dessert, cash bar.

For more information, please call Lou Peralta (908) 756-6406.

Lions Annual Palm Sunday Breakfast

March 16

The South Plainfield Lions Club

will hold their annual gourmet breakfast on Palm Sunday, March 16 at the SPHS cafeteria from 8 a.m. to noon. The menu includes pancakes, omelets to order, French toast, sausage, bacon and orange juice. Cost is \$6 a person. Come support your local Lions Club. Monies raised are used by the South Plainfield Lions Club to assist local residents in need, Camp Marcella (camp for the blind), eye banks, seeing eye dogs and International eyeglass.

Avoid Fraud Program at Library

March 16

South Plainfield Public Library will present the financial program, "9 Tips to Avoid Financial Fraud," on Sunday, March 16 at 2 p.m.

Led by Tony Bunn, certified senior advisor with USA Financial Services, will present a program that will focus on ways seniors can avoid financial fraud, including research and discussing options with friends and family. Free of charge; no pre-registration is required.

For information, call (908) 754-7885 or visit www.southplainfield.lib.nj.us.

VFW Corned Beef and Cabbage Dinner

March 17

A corned beef and cabbage dinner will be held at the VFW, located on Front Street, on Monday, March 17 from 5 to 8 p.m.

The regular monthly dinner will held on St. Patrick's Day. Come and join us.

For more information, call (908) 668-9751.

— Out of Town —

St. Helena Basket Bingo/Raffle Night

February 29

Come out for an evening of fun! St. Helena's HSA is hosting a Longaberger Basket Bingo and Raffle night on Friday, Feb. 29. Doors open at 6 p.m.; bingo starts at 7:30 p.m. Admission is \$15.

For tickets, call Karen Staggard at (732) 283-8460.

Middlesex WOWs

March 3

The Middlesex East Widows Or Widowers (WOWs) will hold their monthly meeting on Monday, March 3 at 7:30 p.m. at the Carteret Community Center, located at Pershing and Cooke avenues in Carteret. Light refreshments. All widows and widowers are welcome.

For more information, call Dorothy at (732) 541-2174 or Lois at (908) 757-0515.

NAMI Meeting

March 3

NAMI Middlesex, an affiliate of the National Alliance on Mental Illness, will hold a membership meeting and speaker series on Monday, March 3 from 7 to 9 p.m. at the University Behavioral HealthCare, 671 Hoes Lane in Piscataway. Topic is "Navigating the School System and the Children's Mental Health System Program."

For more info, call (732) 235-6184.

AJV AUTO MALL
PRE-OWNED
VEHICLE SALES



ARE YOU LOOKING FOR A QUALITY,
PRE-OWNED VEHICLE?
*We guarantee the lowest price on
our quality, pre-owned vehicles.*

OPEN 6 DAYS
732-424-0702
3201 Hamilton Blvd. So Plainfield

Metuchen-Edison Women's Club

March 5

The Metuchen-Edison Women's Club will hold its monthly meeting on Wednesday, March 5 at 7:30 p.m. at The Heritage at Clara Barton, 1015 Amboy Ave. in Edison.

The program will be "Simply Delicious," presented by Cassie Catenaro. Guests are welcome and light refreshments will be served.

For information, please contact Mary at (732) 494-5649.

Annual Schlachtfest Dinner Dance

March 8

Come and join us at Singer Hall, 220 Somerset St. in North Plainfield for our famous Schlachtfest. Pork roast with all kinds of sausages with all the trimmings will be served. Music by the Eddy Zee band. For reservations, call Joan at (908) 647-0819 or Victor at (908) 276-8572.

Experience Jewish Sunday School

March 9

Visit I.L. Peretz Community Jewish School, the secular-humanistic choice in central New Jersey, on Sunday, March 9 from 10 a.m. to 12:30 p.m. at Rutgers Prep, 1345 Easton Ave. in Somerset. Meet our welcoming, inclusive and diverse community and find out how our children develop a Jewish identity without being affiliated with a synagogue.

For information about the open house and the school, call (732) 5450-9691 or visit www.ilperetz.org.

St. Frances Cabrini Annual Tricky Tray Auction

March 14

St. Frances Cabrini School, 2300 Cooper St. in Piscataway, is holding their fifth annual tricky tray auction on Friday, March 14 from 7 to 10 p.m. Free admission, free entertainment and

great prizes!

For more information, call (732) 885-1066 or visit www.cabrini.com.

St. Patrick's Dinner

March 15

St. Francis Episcopal Church, 400 New Market Rd. in Dunellen, is hosting a St. Patrick's Day dinner on Saturday, March 15 from 5:30-7:30 p.m. Dinner includes corned beef and cabbage, potatoes, carrots and dessert. Adults \$12; children under 10, \$7.

For more information, call (732) 968-6781.

Howie Mandel to Headline Benefit

April 12

The Richard Stockton College of New Jersey announced comedian Howie Mandel, star of the hit NBC show "Deal or No Deal," will be the featured entertainer for the 28th Scholarship Benefit Gala on Saturday, April 12 at Caesars Atlantic City Hotel-Casino. Stockton is seeking corporate and individual sponsorships and partners for the event.

Call (609) 652-4658 or log onto www.stockton.edu/scholarshipbenefit.

Poetry Competition

April 25

The EAS Middle and High School Poetry Competition Winners Reading will be held on Thursday, April 25 at Barnes & Noble Bookstore in Menlo Park Mall at 7 p.m. For more information, please call (908) 753-2787.

16th Annual Taste of Somerset Tickets

April 28

The 16th annual Taste of Somerset, the area's original public tasting event, is scheduled for April 28, 6 to 9 p.m. at The Palace at Somerset Park, 333 Davidson Ave. in Somerset.

Purchase tickets (\$75) for this all-you-can-eat event at PeopleCare Center, 120 Finderne Ave. in Bridgewater, online at www.peoplecarecenter.org or call (908) 725-2299.

OPEN SATURDAYS & SUNDAYS
SAME DAY CATERING

HOMETOWN HEROS
BREAKFAST • SUBS • SALADS • SANDWICHES



HOMETOWN HEROS
340 Hamilton Blvd.,
908-755-HERO (4376)
BY THE DARE BLDG.
"Quality Food For Everyday Heroes"

Summer Camp at
CREATIVE KIDS ACADEMY



2 Years Old - 2nd Grade — Full Time & Part Time Available

* Water Play * Arts & Crafts * Sports * Tumbling
* Outdoor & Indoor Play * Gym * Music
* Weekly Themes * Snack

***** Also Registering for Fall
Register Now!! 2008-09 Pre-School & Daycare
Call 753-4477 1615 Clinton Avenue, South Plainfield

Subscribe!

Follow the ups and downs of the borough in the Observer, an independent newspaper for South Plainfield. Send check or money order for \$25/one year (out-of-town-\$30) to: South Plainfield Observer, 1110 Hamilton Blvd., Suite 1B, South Plainfield, NJ 07080.



☒ **Yes, send me home delivery of the Observer.**

NAME _____

ADDRESS _____

CITY, STATE _____

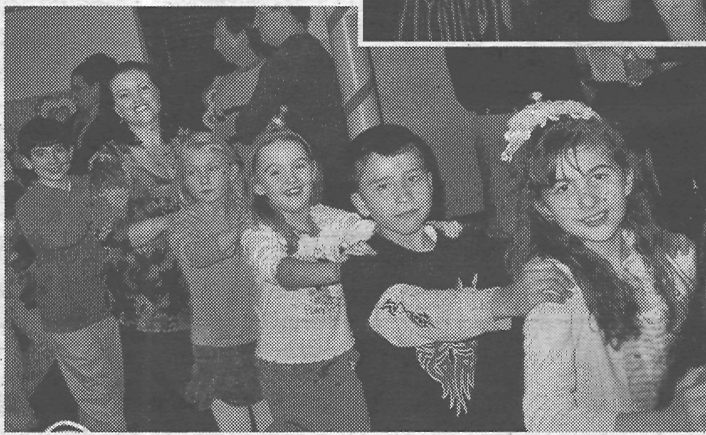
ZIP _____ PHONE _____

CREDIT CARD # (MC OR VISA) EXP. DATE _____

Send in your check for \$25 (in town) or \$30 or your credit card information. Or call in your request: 908-668-0010.



Sacred Heart School students had a sweet time at their recent **St. Valentine's Day Dance**. Pictured at right is student Hailey Crino with her mom. Pictured above and below, over 100 students and family members enjoy the festivities with school principal, Sr. Nadine Boyle.



HIGHLIGHTS

From South Plainfield
High School PTA

By SHARON MILLER

The big event is only one week away. The SPHS PTA Project Graduation Auction/Raffle will be held on Saturday, March 8 from 7 to 11 p.m. at South Plainfield High School.

Tickets are currently on sale, so get yours before they are gone. All proceeds will go towards Project Graduation. This year will mark the South Plainfield High School PTA's 20th year of providing our graduating seniors with a Project Graduation celebration.

It is not too late to donate. However, since our auction is only a week away we can only accept monetary donations or gift cards/certificates. Gift cards/certificates can be from any store or restaurant. Please contact me directly at (908) 754-6461 if you wish to donate a gift card/certificate.

Monetary donations can be mailed to: South Plainfield High School, 200 Lake Street, South Plainfield, Attn: SPHS PTA. Make checks payable to: SPHS PTA-Project Graduation.

Together we can make this event a success for our graduating seniors with the help and support of our wonder-

ful community. Please support this worthwhile cause by making a donation.

Theme Baskets/Single Gift Items—We can still accept these only if you have previously informed us of your donation. Contact me if you wish for your donation to be picked up.

Donations—Must be received ASAP in order to be used for our auction. All families, businesses, and community/educational organizations will be acknowledged in our program for your generous contributions. Our program will be finalized and printed in three days so it is important if you have previously pledged a donation that we receive it as quickly as possible.

Outside Business/Corporate Donations—Ask the businesses or corporations you work for if they will make a contribution or if you know of someone who can obtain a donation from a business or corporation, please ask them for their help. Again, at this time we can only accept monetary donations.

Auction Volunteers—We still need help in the following areas: March 8, set-up noon to 3 p.m.; clean-up 11

p.m. to midnight. We need drivers to help move auction prizes from homes to the high school 11:30 a.m. If interested, contact me. Volunteers will receive a phone call from a PTA member as a reminder.

Auction Ticket Sales—For tickets, contact Pat Fabino (908) 757-6843.

Auction Info—Auction begins at 7 p.m. Doors open at 6 p.m. Tables will be reserved for all ticket holders. The reservation will be in the name of one person from your group. Each person at the table will be provided with a plate, cup and napkin. You may want to bring extras. As far as food goes, the sky is the limit. Bring anything from snacks and desserts to complete dinners. Non-alcoholic beverages only are permitted. We will have a small amount of water, soda and cookies for sale as well as coffee and tea (at no charge). Plastic bags to hold your tickets and pens will be provided at the door. Remember no one under the age of 18 will be admitted.

The Class of 2008 and the SPHS PTA sincerely appreciates your support!

Emil Leporino Memorial Golf Outing

The Emil Leporino Memorial Golf Outing, sponsored by the South Plainfield Education Foundation and the South Plainfield Business Association, will take place on Tuesday, May 6 at the Cranbury Golf Club in West Windsor.

The golf outing is named after Emil Leporino, who was instrumental in the formation of the South Plainfield Education Foundation. While a member of the South Plainfield BOE, a committee was formed to look into ways to connect the business community with the education community. In 1994, as a result of the committee's work, the South Plainfield Vision 2001 Education Foundation was formed. Since 2001, the group has been renamed the South Plainfield Education Foundation, but the goal of the organization has remained unchanged; to provide scholarships for graduating seniors and to provide educational incentive programs throughout the district.

Leporino was also an active member of the South Plainfield Business Association, where he served as vice president. He owned his own insur-

ance business and worked with the business community to improve communication with the town government, and further the objectives of the South Plainfield Business Association.

Entry fee of \$150 includes 18 holes of golf, use of locker rooms, greens fees and cart, continental breakfast, complimentary beverage cart, hot dog and chips at the turn, open bar (beer, wine and soda) and BBQ luncheon. The format is a four-man scramble with a shotgun start.

Prizes will be awarded for team low gross, team low net, hole-in-one, longest drive and closest to the pin.

Registration and continental breakfast begins at 8 a.m. with shotgun start at 9 a.m. The open bar starts at 2 p.m. followed by luncheon and awards.

The following corporate sponsor-

ship are available: Platinum sponsor \$1,000—includes foursome, corporate banner, flag and tee sign and recognition at the event; Gold \$750—includes foursome and flag, recognition at the event and Silver \$500—includes twosome and tee sign, recognition at the event.

Corporate underwriters are: Breakfast sponsor \$250; Beverage Cart sponsor \$250; flag first and 18th green \$175; flag second through 17th green \$125 and tee sign \$125.

To sign up your team or individually, call Carolyn Allen at (908) 561-3275, Tom Lanza (908) 753-6010, Debbie Leporino (908) 510-3663, Bob Longo (908) 753-7004, ext. 106, Rick McCriscin (908) 561-8000, Marge Reedy (908) 561-5800, ext. 302 or Kelly Stashko (908) 412-8881, ext. 4201 or log on to golf@SPBA.biz.

Franklin School PTA to Hold Auction/Raffle

Auction tickets are on sale now for the Franklin School PTO 12th annual auction/raffle to be held on Saturday, March 15 at the SPHS gym. Doors open 6:30 p.m. Ticket price is \$12. Prizes include a 50-inch flat screen TV,

a \$3,000 gift certificate to First Class Travel, a Wii and a Playstation 3.

To purchase tickets or for more information, call Dorothea at (908) 753-7117 or Lynn at (908) 753-5532.

LEGAL NOTICE

NOTICE TO ABSENT DEFENDANT

(L.S.) STATE OF NEW JERSEY TO: Edward Kolbinkie, Deceased, his heirs, devisees, and personal representatives and his; their or any of their successors in right, title and interest

YOU ARE HEREBY SUMMONED AND REQUIRED to serve upon GOLDBECK McCAFFERTY & McKEEVER, A PROFESSIONAL CORPORATION, plaintiff's attorneys; whose address is Suite 5000-Mellon Independence Center, 701 Market Street, Philadelphia, PA 19106-1532, phone # (856) 858-3242, an answer to the Amended Complaint, filed in a civil action, in which U.S. Bank National Association, as Trustee of Citigroup Mortgage Loan Trust, Asset Backed Pass Through Certificates, Series 2007-AMC4 under the Pooling and Servicing Agreement Dated as of June 1, 2007, Without Recourse is plaintiff, and Edward Kolbinkie, Deceased, his heirs, devisees, and personal representatives and his; their or any of their successors in right, title and interest, is/are the defendant(s), pending in the Superior Court of New Jersey, Chancery Division, Middlesex County, and bearing Docket No. F-32031-07 within thirty-five (35) days after February 29, 2008 exclusive of such date. If you fail to do so, judgment by default may be rendered against you for the relief demanded in the Amended Complaint. You shall file your answer and proof of service in duplicate with the Clerk of the Superior Court of New Jersey, Hughes Justice Complex - CN 971, Trenton, New Jersey 08625, in accordance with the rules of civil practice and procedure.

This action has been instituted for the purpose of (1) foreclosing a mortgage dated January 31, 2007, made by Edward Kolbinkie as mortgagor(s), to Argent Mortgage Company, LLC recorded on February 08, 2007, for Middlesex County in Book 12165, Page 337 of Mortgages for said County, which mortgage was assigned to the plaintiff, U.S. Bank National Association, as Trustee of Citigroup Mortgage Loan Trust, Asset Backed Pass Through Certificates, Series 2007-AMC4 under the Pooling and Servicing Agreement Dated as of June 1, 2007, Without Recourse, by Assignment which has been sent for recording; and (2) to recover possession of, and concerns premises commonly known as 103 Furman Blvd., Old Bridge, NJ 07735.

If you are unable to obtain an attorney, you may communicate with the New Jersey State Bar Association by calling 1-732-249-5000. You may also contact

the Lawyer Referral Service of the County of venue by calling 1-(732) 828-0053. If you cannot afford an attorney, you may communicate with the Legal Services offices of the County of venue by calling 1-(732) 249-7600.

YOU, Edward Kolbinkie, deceased, his heirs, devisees, and personal representatives and his; their or any of their successors in right, title and interest, are hereby made a party defendant to this foreclosure action because you are the unknown heirs of Edward Kolbinkie, the record owner of the mortgaged premises who executed the bond or note and mortgage being foreclosed herein and may be liable for any deficiency thereon, and for any lien, claim or interest you may have in, to or against the mortgaged premises.

Theodore J. Fetter
Theodore J. Fetter, Clerk
Superior Court of New Jersey

\$96.70 February 29, 2008

BOROUGH OF SOUTH PLAINFIELD MIDDLESEX COUNTY, NEW JERSEY

LEGAL NOTICE ORDINANCE 1793A

BE IT RESOLVED BY THE GOVERNING BODY OF THE BOROUGH OF SOUTH PLAINFIELD, MIDDLESEX COUNTY, NEW JERSEY, THAT:

Ord. 1793A entitled: AN ORDINANCE AMENDING ORDINANCE #1793, REGULATING THE OPERATION OF TRAFFIC CONTROL DEVICES, MORE SPECIFICALLY AT THE INTERSECTION OF DURHAM AVENUE AND HAMILTON BOULEVARD was presented for adoption after a public hearing was held by the Mayor and Council on Monday, February 25, 2008 at 7:00 p.m. in the Municipal Building, 2480 Plainfield Avenue, South Plainfield, NJ 07080.

ATTEST:
Vincent Buttiglieri/Municipal Clerk

\$24.70 February 29, 2008

BOROUGH OF SOUTH PLAINFIELD MIDDLESEX COUNTY, NEW JERSEY

LEGAL NOTICE ORDINANCE 1808

BE IT RESOLVED BY THE GOVERNING BODY OF THE BOROUGH OF SOUTH PLAINFIELD, MIDDLESEX COUNTY, NEW JERSEY, THAT:

Ord. 1808 entitled: AN ORDINANCE AUTHORIZING THE BOROUGH TO ACCEPT A DONATION OF REAL PROPERTY IDENTIFIED AS BLOCK 451, LOT 3, FROM EDITH FANTAUZZO was presented for adoption after a public hearing was held by the Mayor and Council on Monday, February 25, 2008 at 7:00 p.m. in the Municipal Building, 2480 Plainfield Avenue, South Plainfield, NJ 07080.

ATTEST:
Vincent Buttiglieri/Municipal Clerk

\$23.75 February 29, 2008

BOROUGH OF SOUTH PLAINFIELD MIDDLESEX COUNTY, NEW JERSEY

LEGAL NOTICE ORDINANCE 1809

BE IT RESOLVED BY THE GOVERNING BODY OF THE BOROUGH OF SOUTH PLAINFIELD, MIDDLESEX COUNTY, NEW JERSEY, THAT:

Ord. 1809 entitled: AN ORDINANCE REGULATING THE PARKING, STOPPING AND STANDING OF ANY MOTOR VEHICLE ON A PORTION OF HANCOCK STREET BETWEEN NEW MARKET AVENUE AND BLOCK 329, LOTS 13 AND 14 was presented for adoption after a public hearing was held by the Mayor and Council on Monday, February 25, 2008 at 7:00 p.m. in the Municipal Building, 2480 Plainfield Avenue, South Plainfield, NJ 07080.

ATTEST:
Vincent Buttiglieri/Municipal Clerk

\$24.70 February 29, 2008

**Check out our Web site
at: spobserver.com**

Your #1 Source for South Plainfield News

**Advertise your classified ad on
our Web site. Want to know more?
Call 908-668-0010.**

Congratulations!

2007-08

JUNIOR JOURNALIST



Charlie and Debbie Kurland deliver dinner to Jyneer Green, parents Cynthia and Gerard, grandmother Ida Brightman, aunt and uncle Kimiko and Kevin Archer and Nicole and Damian Beaton, and brother and sister Gerard Jr. and Gabrielle.

Congratulations!

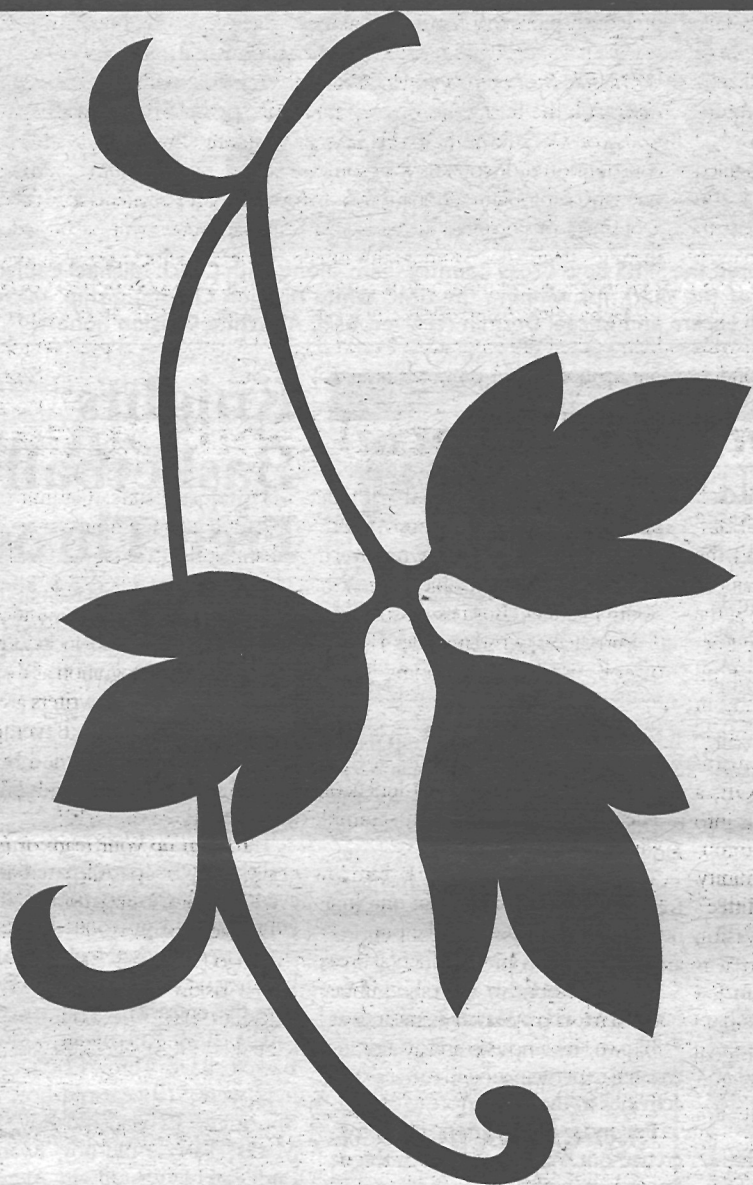
2007-08

JUNIOR JOURNALIST



Charlie and Debbie Kurland deliver dinner to Timothy Nuber, parents Dave and Geralyn and sisters Katie and Kirsten. Tim's brother, Eric, was not at home.

IT'S THE ISSUE YOU'VE BEEN
WAITING FOR...



March 21 South Plainfield Observer

The March 21 South Plainfield Observer will be mailed to every home and business in the borough. It's a great opportunity for advertisers to reach the 10,000 homes and businesses here. And it's a great resource for readers. To reserve your space (by March 7) or to get more information, call (908) 668-0010.

AVISO PARA PERSONAS QUE DESEEN PAPELETAS DE CIVIL AUSENTE

Si usted es un votante del Estado calificado y registrado, que quiere votar con papeleta para voto en ausencia en la Elección Escolar que se llevará a cabo el **15 de abril de 2008**, por favor complete el formulario a continuación y envíelo al abajo firmante o escríbale o diríjase en persona de inmediato al abajo firmante solicitándole que le sea enviada una papeletea para civil ausente. En dicha solicitud debe figurar su dirección residencial y la dirección a donde se le debe enviar la papeleta para voto en ausencia debidamente fechada y firmada por usted. Si alguna persona lo ayudó a completar el formulario de papeleta para voto en ausencia, en dicho formulario debe figurar el nombre, la dirección y la firma del ayudante. Usted también debe firmar y fechar el formulario para que este sea válido y procesado. Ninguna persona que sea candidato en la erección para la que el votante solicita una papeleta para voto en ausencia podrá proveer asistencia para completar la papeleta o ejercer como mensajero autorizado. Ninguna papeleta para civil ausente será proporcionada o enviada a un solicitante a menos que la solicitud para ello sea recibida siete días antes de la elección, y contenga la información mencionada anteriormente.

Los votantes con incapacidades permanentes y totales, y cualquier otro votante que desee votar solamente a través de papeleta para voto en ausencia en una Elección General y que así lo aclare en su petición, luego de su solicitud inicial y sin más proceder de su parte, se le enviará un formulario de papeleta para voto ausente a través del Secretario del Condado para futuras elecciones en las que tenga derecho a votar y hasta que el votante solicite que no se le envíe más el formulario. Los votantes con incapacidades permanentes y totales también tienen la opción de indicar en los formularios para papeleta de voto en ausencia que preferirían recibir las papeletas para cada elección que se lleve a cabo en lo que resta del año. A los votantes con incapacidades permanentes y totales que utilicen ésta opción se les proporcionará papeleta de voto en ausencia para cada elección que se lleve a cabo en lo que resta del año, sin más proceder de su parte.

Los formularios de solicitud deben obtenerse solicitándolos al abajo firmante por escrito o por teléfono o se debe completar y enviar al abajo firmante el formulario de solicitud que se encuentra a continuación.

FECHA: Febrero 29, 2008

ELAINE M. FLYNN
MIDDLESEX COUNTY CLERK
P.O. Box 1110
NEW BRUNSWICK, N.J. 08903
(732) 745-4463

UNA PERSONA INCAPACITADA TIENE EL DERECHO A VOTAR CON PAPELETA DE AUSENTE O A SER ASISTIDA EN LAS URNAS POR DOS OFICIALES DE ELECCIONES, UNO DE CADA PARTIDO, O POR UNA PERSONA ELEGIDA POR EL VOTANTE QUE NO SEA SU JEFE, O EL AGENTE DE ESE JEFE, U OFICIAL O AGENTE DE SU UNION. LUGARES DE VOTACIÓN DEBEN SER ACCESIBLES Y DEBE SER PROVEÍDO ESTACIONAMIENTO ACCESIBLE CON SEÑALES APROPIADAS. VOTANTES CON SORDERA O POCA AUDICIÓN PUEDEN CONTACTAR EL SIGUIENTE NÚMERO TDD: (732) 937-8364. INSTRUCCIONES IMPRESAS EN LETRA GRANDE DEBERAN SER CLARAMENTE EXHIBIDAS EN CADA LUGAR PERMANENTE DE REGISTRO O VOTACIÓN. VIOLACIONES A LO ANTERIOR DEBERÁN SER REFERIDAS A LA JUNTA DE ELECCIONES DEL CONDADO DE MIDDLESEX: (732) 745-3471.

PARA USO EXCLUSIVO DE LA OFICINA

NÚMERO DE VOTANTE	PARTIDO	MESA ELECTORAL	DISTRITO	No. DE BOLETA
-------------------	---------	----------------	----------	---------------

SOLICITUD DE BOLETA DE VOTANTES CIVILES AUSENTES

ESCRIBA EN LETRA DE IMPRENTA O A MÁQUINA SU NOMBRE FECHA DE NACIMIENTO

DIRECCIÓN O No. DE RUTA

MUNICIPIO	CÓDIGO POSTAL	TELÉFONO
-----------	---------------	----------

Mediante el presente, solicito una boleta para votante ausente para la elección (marque una):

☐ Primaria ☐ General ☐ Municipal ☐ Escolar ☐ Especial
☐ Otra a realizarse el (especifique) (fecha)

OPCIONES PARA VOTANTE AUSENTE (Marque la opción que se aplique a su caso)
A. ☐ Padezco de una discapacidad permanente y total, y deseo recibir una boleta para votante ausente para todas las elecciones que se realizarán durante lo que queda del año calendario.
B. ☐ No padezco de una discapacidad permanente y total, pero deseo votar solamente mediante boleta para votante ausente en una elección general. Si marca esta casilla, se le enviará automáticamente una solicitud de boleta para votante ausente para cualquier elección general hasta que solicite lo contrario.

Envíe mi boleta a la siguiente dirección:
(si es diferente a la dirección que se indica más arriba):

DIRECCIÓN

MUNICIPIO	ESTADO	CÓDIGO POSTAL
-----------	--------	---------------

Firme su nombre conforme aparece en el libro de votaciones FECHA DE HOY

Toda persona que preste ayuda al votante para completar esta solicitud debe suministrar:

NOMBRE (A MÁQUINA O EN LETRA DE IMPRENTA)

DIRECCIÓN

MUNICIPIO	ESTADO	CÓDIGO POSTAL
-----------	--------	---------------

FIRMA DEL ASISTENTE

FECHA

NINGÚN CANDIDATO DE LA ELECCIÓN PARA LA QUE EL VOTANTE ESTÁ SOLICITANDO UNA BOLETA PARA VOTANTE AUSENTE PUEDE SER UN MENSAJERO AUTORIZADO.

SOLAMENTE si está enfermo o recluso, el votante puede solicitar una boleta para votante ausente mediante un "Mensajero Autorizado. El mensajero debe ser un familiar o un votante inscrito en este Condado.

Designó a (Nombre del mensajero) para que sea mi mensajero autorizado

(Firma del votante)

El Mensajero Autorizado debe firmar la solicitud y mostrar una identificación con fotografía ante el Secretario del Condado o una persona designada por éste. "Mediante el presente, certifico que entregaré la boleta para votante ausente directamente al votante y a ninguna otra persona, bajo apercibimiento de penalidades legales".

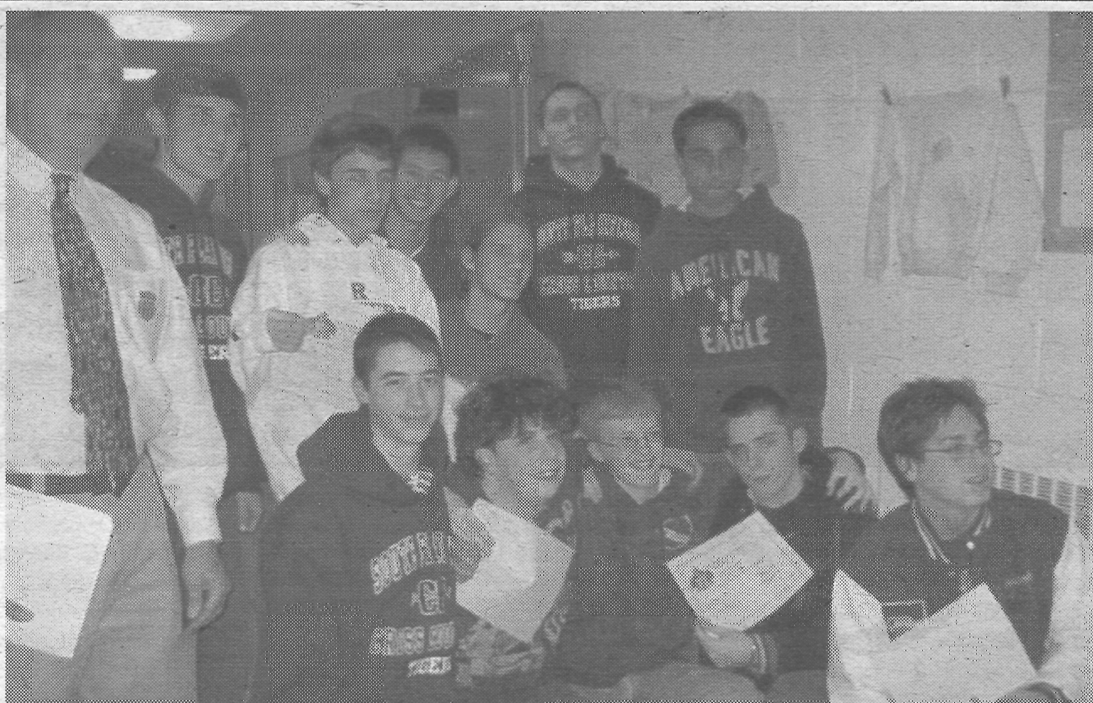
FIRMA DEL MENSAJERO

DIRECCIÓN

MUNICIPIO	ESTADO	CÓDIGO POSTAL
-----------	--------	---------------

NJDOE-N-7-18.07

Sports



The Board of Education honored the SPHS Boys Cross Country team, along with Coach Michael Capizola, GMC (White Division Coach of the Year), for winning the GMC White Division Championship. Michael Dezmin, Alan Kasmer, Joseph Lacera and Micael Dezmin received GMC All White Division honors.

By Gary Lampasona

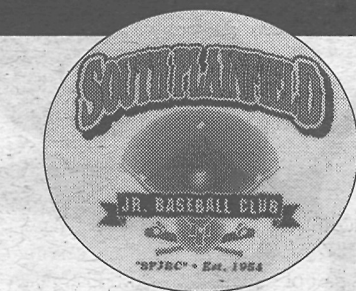
JUNIOR BASEBALL CLUB NOTES

It's here, it's here! Tryouts for Small Fry C and Small Fry B will be held at the PAL on March 1, starting at 9 a.m. Grab your gloves and bring your spirit; do your best and you'll make us proud. The Women's Auxiliary will be selling refreshments, boosters and SPJBC clothing all day.

Rutgers Certification

All managers, coaches and assistants must be Rutgers certified and a 2008 SPJBC member to be on the field during games. The next Rutgers certifications class will be held on Thursday, March 13. Please call the clubhouse at (908) 754-2090 to register. Membership cards can be obtained at monthly meetings. Please see a board member.

Draft date for Small Fry A is Tuesday, March 4 at 7:30 p.m.; Small Fry



B is Thursday, March 6 at 7:30 p.m.; Small Fry C is Wednesday, March 5 at 7:30 p.m. Ad sponsorships for the opening day program are still available. Download the form from the Web site.

Thanks to the Women's Auxiliary for donating the foul poles for the newly renovated Field 3. Your efforts are greatly appreciated.

The next monthly meeting will be held on Monday, March 3, starting at 7:30 p.m. It's important for those interested in participating in this season's activities to make an effort to attend.

For more information, please reference our Web site at www.league lineup.com/spjbc.



Ponytail Softball Batters Box

By Nancy McMahon

The last day to sign up for Ponytail Softball is March 4.

ELECCIÓN ESCOLAR AVISO PARA ELECTORES EN EL SERVICIO MILITAR, SUS PARIENTES Y AMIGOS

Si usted se encuentra en el servicio militar; es esposo(a) ó dependiente de alguien en el servicio; es paciente en un hospital para veteranos; es un civil adjunto a, ó sirve con, las Fuerzas Armadas de los Estados Unidos, es esposo(a) ó dependiente de un civil adjunto a, ó que sirve con, las Fuerzas Armadas de los Estados Unidos. Si usted tiene estas características y desea votar, ó es un familiar ó amigo de alguien que las tenga y que usted crea que quiera votar, en la Elección Escolar que se llevara a cabo el **15 de abril de 2008**. Escriba por favor, al abajo firmante para solicitar que le envíen una papeleta del servicio militar, para votar en dicha elección. Si usted esta en el servicio, incluya su nombre, edad, número de serie, dirección residencial y la dirección de su base ó donde se le pueda localizar. Si desea la papeleta para un pariente ó amigo, haga la petición bajo juramento, solicitando que la papeleta del servicio militar le sea enviada a esa persona, declarando que la persona es mayor de dieciocho años, su nombre, su número de serie si esta en el servicio militar, dirección residencial y dirección de su base ó de donde pueda ser localizado.

Electores del servicio militar pueden solicitar la papeleta de voto militar enviando una solicitud federal en forma de tarjeta postal a la Secretaria del Condado.

En la solicitud para la papeleta del servicio militar, electores del servicio militar pueden requerir que una papeleta del servicio militar les sea enviada para todas las elecciones subsiguientes e incluyendo las proximas dos elecciones generales programadas regularmente para cargos federales que tengan lugar despues que la solicitud sea hecha.

(NOTA: EL ELECTOR MILITAR QUE DECLARE SU ESTACION MILITAR COMO DOMICILIO PARA VOTAR NO PUEDE USAR LA PAPELETA DE MILITAR AUSENTE A MENOS QUE ESTE REGISTRADO PARA VOTAR EN EL MUNICIPIO DONDE DICHA ESTACION ESTA LOCALIZADA.)

Las solicitudes, excepto la solicitud postal federal, pueden ser obtenidas en la siguiente dirección:

FECHA: Febrero 29, 2008

ELAINE M. FLYNN
MIDDLESEX COUNTY CLERK
P.O. BOX 1110
NEW BRUNSWICK, N.J. 08903

Knights Basketball Free Throw

The South Plainfield Knights of Columbus Council #6203 held their 2008 Knights Basketball Free-Throw Challenge on January 20 in Sacred Heart School gymnasium. The event was held for youths ages 10 through 14. The child who made the most free-throws from 15 attempts won their age category.

The Knights would like to thank every child who participated in this event. Your participation made this youth event a great success. Special thanks to Knights of Columbus member Greg Gaydos and his team for running this event with great success.

The 2008 Knights of Columbus Basketball Free-Throw Challenge winners were: 10-year-old-boy, Brian Sporman; 12 year-old-boy, Justin Marks; 14-year-old-boy, Ryan Riccardi and 14-year-old-girl, Alexis Cargill. The winners will move on to district level competition held in Sayreville.

Check out our
Web site at:
spobserver.com

Your #1 Source for South Plainfield News

www.spobserver.com
email: spobserver@comcast.net

LEGAL NOTICE

BOROUGH OF SOUTH PLAINFIELD
MIDDLESEX COUNTY, NEW JERSEY

LEGAL NOTICE

An appeal has been filed by JRB Properties LLC requesting a variance from the requirements of the Zoning Ordinance of the Borough of South Plainfield to permit the construction of a 15,703 sq. ft. warehouse addition and to obtain variances for reduced front yard and side yard setbacks; and other variances that may be required, said property being located at 111 Snyder Road, Block 409, Lot 15 on the South Plainfield Tax Map.

For the purposes of hearing objections to or protests against the granting of said appeal, the South Plainfield Zoning Board of Adjustment will hold a public hearing on Tuesday, March 11, 2008 in the Council Chambers, Borough Hall, 2480 Plainfield Avenue, South Plainfield, New Jersey at 7:00 p.m.

The files and documents pertaining to this appeal are available for public inspection in the Planning/Zoning Office in Borough Hall between the hours of 8:00 a.m. and 4:00 pm.

\$38.50

February 29, 2008

Mind Your Business.

Advertise your business for \$16.50 a week in the B&P section of the Observer. Isn't your business worth the investment? Call 908-668-0010 for information.

Obituaries

Renee V. Heiss-Gaydos, 53

Renee V. Heiss-Gaydos died on Friday, Feb. 22 at Beth Israel Medical Center in Newark.

Born in Elizabeth she resided in Hillside before settling in South Plainfield.

A dear mother, she served as a Girl Scout troop leader for a Sacred Heart School troop.

Surviving are a daughter, Victoria; her mother, Lucy; two sisters, Wendy and Lucy; two brothers, Jeffrey and Richard, as well as many extended family members.

Funeral services were held at McCriskin-Gustafson Home For Funerals.

John L. Mocharski, 78

John L. Mocharski died on Friday, Feb. 22 at Beth Israel Medical Center in Newark.

Born in Dunmore, Pa., John lived in Newark before moving to South Plainfield in 1960. He was employed as a test engineer with PSE&G in Maplewood for 38 years, retiring in 1993. During his career John was a member of the PSE&G bowling team.

A recipient of the Purple Heart, John served with the U.S. Army during the Korean Conflict.

John was a highly active member of Sacred Heart RC Church. He served as an usher for many years, participated as a caller during Tuesday night bingo and assisted in the kitchen during the church funerals, fish dinners and the special children's luncheons. In addition, he was a former church trustee, president of the Holy Name Society, a member of the church's Nocturnal Adoration Society, as well as the St. Vincent DePaul Society.

He was predeceased by his parents, Joseph and Anna Mocharski.

Surviving are his loving wife of 54 years, Antonia (Enea); three daughters,

Dianne Seesselberg (William) of South Plainfield, Lauren Harding (Glenn) of Piscataway, and Leslie Wegendorf (Dave) of Duluth, Ga.; two sons, John R. Mocharski (Pam) of South Plainfield and James Mocharski (Andrea) of Columbus, Ohio and two sisters, Dorothy Lardieri of Timonium, Md. and Joan Groom (Robert) of Sterling Heights, Mich. Also surviving are nine grandchildren, Jeffrey and Christopher Seesselberg, John R. Jr. and Michael Mocharski, Mark, Emily and Glenn Harding and Veronica and Dominic Wegendorf and several loving nieces and nephews.

Funeral services were held at McCriskin-Gustafson Home For Funerals.

Lorraine S. Cochrane, 62

Lorraine S. Cochrane died suddenly on Thursday, Feb. 21 at Muhlenberg Regional Medical Center in Plainfield.

Born in Newark, Lorraine had resided in Hillside for a short time before moving to South Plainfield. A graduate of South Plainfield High School Class of 1963, she attended secretarial school in N.Y.C. While working as a secretary for Kislak Real Estate Co. in Newark, she met her husband, Bill Cochrane. After they were married, they resided in East Orange and Parsippany before settling in South Plainfield.

An active and well-known mother of four, Lorraine worked as a school bus driver for the former Scalera Bus Company. She had also been active with a number of organizations, including South Plainfield Junior Baseball Club Women's Auxiliary, serving as past president, and South Plainfield Pop Warner Football Eagles, where she served as the head cheerleading coach. As a mother of twins, Lorraine was a member of the Twin Mother's Club of Plainfield, serving as past president and currently was the vice president.

Lorraine was an avid bowler who bowled in the women's league at the Brunswick Lanes of Edison and most

recently, had been an active member of the South Plainfield Senior Citizens where she enjoyed bingo.

She was predeceased by her mother and stepfather, Mary and Everett Smyllie; her father, Peter Cerven and a brother, Everett Smyllie.

Surviving are her husband, Bill; four children, Brian and wife Laurian, Billy and wife Barbara, twin Michelle Morin and husband Dale, all of South Plainfield and twin Chris Cochrane of Piscataway and seven grandchildren, Quinn, Ben, Jack, Charlee, Wren and Skylar Cochrane and Emma Morin.

Also surviving are many dear friends from the Twin Mothers Club, especially Carmella Ford and Kathy Gangemi.

Funeral services were held at McCriskin-Gustafson Home For Funerals.

Memorial donations in her memory may be made to St. Stephen's Lutheran Church.

Jean (Campana) Celentano, 87

Jean (Campana) Celentano died on Saturday, Feb. 23 at the Sunrise Assisted Living in East Brunswick.

Born and raised Berkeley Heights, Mrs. Celentano moved to South Plainfield in 1948.

Mrs. Celentano was a member of Sacred Heart RC Church. During her younger years and while her children were growing up, she participated in the PTA.

A legal secretary for various law firms in the Plainfield/South Plainfield area, she retired in 1985. After retiring, she enjoyed baking and raising her family as a homemaker.

Jean was predeceased by her husband, Guido, who died in 2005; two sisters and a brother.

Surviving are a daughter, Diane Leahy and husband Joseph of Woodbridge; two sons, Alfred Celentano of Venture, Calif. and Jerry Celentano and wife Doreen of Hampton; a brother, Dominic Campana and wife Carmella of New Providence. Also

surviving are two grandchildren, Jesse and Alexarae Celentano.

Funeral services were held at McCriskin-Gustafson Home For Funerals.

Lois V. Gorman-Eggers, 78

Lois V. Gorman-Eggers died on Saturday, Feb. 23 at Robert Wood Johnson University Hospital in New Brunswick.

Born in Elizabeth, Lois had resided in Cranford and South Plainfield, where she lived most of her life, before settling in Piscataway 14 years ago.

Lois worked as a waitress for 32 years at the former Knotty Pine Diner on Park Avenue. She was a member of the Woodbridge Elks #2116 Women's Auxiliary and was an avid Yankees fan. In addition, she enjoyed playing bingo at Sacred Heart and St. Helena's in Edison.

She was predeceased by a son, Kevin Leavitt, and a nephew, Thomas Caulfield, Jr.

Surviving are her husband, David; eight children, Lois (Steve) Feher, Michael (Georgeanne) Leavitt, Debra (Donald) Panek, Stephan (Anne) Leavitt, Paul (Sheila) Graczyk, Thomas J. (Sharon) Gorman, Jr., Darren P. (Jill) Gorman and James E. (Randi) Gorman; a daughter-in-law, Bettie Leavitt; a sister, Harriett Caulfield and a niece, Sherry Hudzik. Also surviving are 19 grandchildren and six great-grandchildren.

Funeral services were held at McCriskin-Gustafson Home For Funerals.

In lieu of flowers, donations in her memory may be made to the American Cancer Society or the American Diabetes Foundation.

Louis Grare, 77

Louis Grare died on Thursday, Feb. 21 in the Haven Hospice at Muhlenberg Regional Medical Center in Plainfield.

Born and raised in Plainfield, Louis settled in South Plainfield in 1968.

Louis was a veteran of the United States Navy where he served during the Korean Conflict aboard a des-

troyer, The USS Stribling DD-876. He was honorably discharged in 1954. Upon returning home, he joined the Plainfield Police Department where he worked as a sergeant until 1972. He later worked as a self-employed private investigator prior to working for Aaron and Company Plumbing Supply in Piscataway until his retirement in 2003.

As a member of the American Legion Chaumont Post #243, Louis also served as post commander. He was also a member of the Veterans of Foreign Wars Memorial Post #6763, The Tin Cup Sailors and a life member of PBA Local #19.

His wife, Joan, died in March of 2007.

Surviving are two sons, Mark and Jeffrey and wife Nancy; three daughters, Diane Caruso and husband Anthony, Suzanne Tinsman and husband, Timothy and Sarah Grare and Michael Bowman; three sisters, Ellen Pohira, Jo Wolfmayer and Harriet Walters and a brother, Peter Grare.

Also surviving are three grandchildren, Joseph, Jennifer and Melissa.

Funeral services were held at McCriskin-Gustafson Home For Funerals.

In lieu of flowers, donations may be made to the South Plainfield Rescue Squad, 2520 Plainfield Ave., South Plainfield, N.J. 07080.

Ellen Mathilde Kaufmann, 94

Ellen Mathilde Kaufmann died on Monday, Feb. 11 at Chestnut Ridge Nursing Center in Cumming, Ga.

Mrs. Kaufmann was born in New York and was a homemaker.

She was predeceased by her husband, George A. Kaufmann.

Surviving are two sons, Bob (Kathleen) of Cumming, Ga. and Frank (Pat) Kaufmann of South Plainfield and four grandchildren, Frank, Eric, Matthew and Marissa Hornsby.

Funeral services were held at McCriskin-Gustafson Home For Funerals.

In lieu of flowers, donations may be made to the Alzheimer Association, 225 N. Michigan Ave., Fl. 17, Chicago, Ill. 60601.



McCriskin-Gustafson

"An Independent, Family Owned & Operated Funeral Home"

HOME FOR FUNERALS, LLC

(908) 561-8000

2425 Plainfield Ave., South Plainfield, NJ 07080

PRE ARRANGEMENTS • S/S MEDICAID PROTECTION • CREMATION SERVICES

James A. Gustafson, Pres./Mgr. • N.J. Lic. No. 4205
Richard W. McCriskin II, Vice-Pres./Dir. • N.J. Lic. No. 4564

Richard W. McCriskin, Dir. • N.J. Lic. No. 3147
William C. McCriskin, Dir. • N.J. Lic. No. 3382

www.mccriskinfuneralhome.com





HOMETOWN HEROS

SEND-A-PLATTER

We will send to any home a beautifully arranged and wrapped Assorted Sandwich Tray with two of our homemade salads-Any Day-Any Time.

908-755-HERO (4376)



\$49.95

Hillside Cemetery

Regarded as one of the most beautiful cemeteries in the East

Scotch Plains

908.756.1729

www.hillsidecemetery.com

It is far easier for your family if you plan ahead

One more reason to transfer your prearrangements to South Plainfield:

Frank Rainear! If you already have funeral prearrangements with another funeral home, we can help you move your prearrangement to South Plainfield Funeral Home without any additional cost.



Frank Rainear
Local Owner/Manager
Ready to help you with your prearrangement questions.

SOUTH PLAINFIELD FUNERAL HOME

2456 Plainfield Ave. • South Plainfield, NJ 07080
(908) 756-2800

www.southplainfieldfuneralhome.com

Franklin H. Rainear, Jr., Manager, N.J. Lic. No. 4543
Tamara L. Hawbaker, Director, N.J. Lic. No. 4577
Glenn J. Scarponi, Director, N.J. Lic. No. 4411

All facilities are handicapped accessible.

NOTICE TO MILITARY SERVICE VOTERS AND TO THEIR RELATIVES AND FRIENDS

If you are in the military service, or the spouse or dependent of a person in military service or a patient in a veterans' hospital or a civilian attached to or serving with the Armed Forces of the United States, or the spouse or dependent of and accompanying or residing with a civilian attached to or serving with the Armed Forces of the United States, and desire to vote, or if you are a relative or friend of any such person who, you believe, will desire to vote in the School Election to be held on April 15, 2008, kindly write to the undersigned at once making application for a military service ballot to be voted in said election to be forwarded to you, stating your name, age, serial number if you are in military service, home address and the address at which you are stationed or can be found, or if you desire the military service ballot for a relative or friend then make application under oath for a military service ballot to be forwarded to him, stating in your application that he is over the age of 18 years and stating his name, serial number if he is in military service, home address and the address at which he is stationed or can be found.

Military service voters may also apply for a military service ballot by sending a federal postcard application form to the undersigned.

On the application for a military service ballot, military service voters may request that a military service ballot be sent for all subsequent elections through and including the next two regularly scheduled general elections for federal office which take place after the request is made.

(NOTE: MILITARY SERVICE VOTER CLAIMING MILITARY STATION AS HOME ADDRESS FOR VOTING PURPOSES MAY NOT USE MILITARY ABSENTEE BALLOT UNLESS REGISTERED TO VOTE IN THE MUNICIPALITY WHERE SUCH STATION IS LOCATED.)

Forms of application other than federal postcard application forms can be obtained from the undersigned.

DATE: February 29, 2008

ELAINE M. FLYNN
MIDDLESEX COUNTY CLERK
COUNTY ADMINISTRATION BUILDING
P.O. BOX 1110
NEW BRUNSWICK, NJ 08903

IN MY OPINION

The opinions expressed in this column are not necessarily those of the publisher.

(Continued from page 2)

anything from it except the peace of mind that comes from knowing I have hopefully helped present another point of view.

**RESPECTFULLY,
SUSAN C. BARRY**

Dear Editor,

Can somebody—anybody—explain the logic?

Muhlenberg Hospital is closing after 130 years because of insufficient State aid to cover its uninsured patients. Cutting to the chase, if Muhlenberg were not required to treat those uninsured, the hospital would be solvent and still in business.

Something is drastically wrong when the State will force a hospital to close down on the 85% of the population that can pay their own way, just because 15% can't. In other words, close down on 100% because the hospital can't afford to take care of those 15%? Real good liberal logic! (And this is only the State. Both Barack Obama and Hillary Clinton are looking for the Federal Government to take over the entire mess (yeah, don't remind me how good the government can run the Department of Motor Vehicles)!

Now people of the Plainfield/South Plainfield community will have to travel almost 10 miles when an emergency occurs, rather than the immediate vicinity closeness that Muhlenberg provided for most. That's really great news for future heart attack victims.

Impeach! Impeach! Impeach!

KEVIN O'BRIEN

Dear Editor,

My family and I want to extend our heartfelt thanks and appreciation to Frank H. Rainear, Jr., manager of the South Plainfield Funeral Home, for the funeral arrangements made for our

mother, Adeline Schulman.

Being of the Jewish faith we wanted our mother to be buried according to Jewish tradition. Mr. Rainear personally took care of every detail to ensure that her funeral adhered to all the religious customs necessary for a Jewish burial. Frank was always available to us to answer any questions or concerns that we had.

We highly recommend South Plainfield Funeral Home to anyone who has a need for such services. You can have confidence that you and your loved one will be treated with the utmost of care and your loved one will be treated with the utmost of care and personal attention. Thank you, Frank, for being there for us.

**SINCERELY,
FRANCINE ZUCKER OF CLARK &
THE SCHULMAN FAMILY OF
SOUTH PLAINFIELD**

Dear Editor,

After reading last week's paper, I felt the need to write to correct a reporting oversight. Last week the *Observer* reported that the decision to table the property purchases for the extension of New Market Avenue was 4-2 and went along party lines. In fact, it was 5-1, with one Democrat and four Republicans voting together.

A similar error occurred a couple weeks ago when the paper reported that the decision to replace our Borough administrator was 4-2 along party lines, when in reality it was unanimous (6-0). I think this vote was noteworthy, because Republicans chose a key Democratic appointee to serve as their administrator. Why? Glenn Cullen was the best person for the job and will serve the town well! Which party originally appointed him as CFO is irrelevant.

There's more bipartisan cooperation on the council than one might

think. For example, Council President Rob Bengivenga was the one who pushed for a compromise when council members and members of the community were split on the prosecutor appointment. It was his idea to divide the job among the two finalists, Paul Garelick and Tom Lanza. This is a win-win for everyone, as the town can now take advantage of Paul's top-notch trial experience and Tom's years of experience in the position.

I also don't think people realize that we (meaning the Republicans) reappointed nearly one-quarter of the professionals originally appointed by the Democrats. While it's typical for a new administration to wipe clean the prior administration's appointments and put in their own people, we looked to keep those we thought were doing an excellent job—regardless of party affiliation. We even reappointed a former Democratic chairman as the public defender.

This is not to say that there won't be times when the council divides by party. The two parties don't see eye to eye on key issues, including the safety of detouring trucks onto New Market Avenue (which we question) and the need for fiscally responsible budgeting (which we think is vitally necessary). But whenever possible we should look to work together. The key is to do what's best for South Plainfield. Thanks for letting me set the record straight.

COUNCILMAN TIM McCONVILLE

Editor's Note—The correct council vote on Glenn Cullen's appointment was brought to our attention by Mayor Charles Butrico and a correction published in the Observer on February 8. We also have a correction in this week's paper on the vote for the New Market Extension. While we constantly strive for accuracy, we always publish a correction when an error occurs.

To the Editor:

Every Friday there are more articles knocking the truck traffic and how it negatively affects this town. Has anyone thought about the truckers? I grew up with a father who drove a truck for 45+ years, 25+ of which was for Hall's Fast Motor Freight right here in South Plainfield. My brother is also the owner/operator of Bartolotti Trucking also based here in South Plainfield.

My father received safe driving awards in his career, as well as placing third in a truck rodeo that the N.J. Trucking Association holds every year which brings out truckers who have been accident free to compete with their knowledge, talent and professionalism in navigating those large machines in the tightest of spaces.

I really think our officials, as well as our towns people, are missing the big picture. This town, as well as being a great place to live and raise a family, as both my brother and I are doing, is very much an industrial town in which truck traffic exists.

If the people in their cars would open their eyes and realize that the trucks need room to maneuver, there would definitely be less accidents. Rule of thumb—if you can't see their mirrors, they can't see you! Without the trucks, your favorite foods, supplies and home goods aren't getting to the stores.

Bottom line is these men and women work long hours driving distances everyday through all kinds of weather and road conditions. Most of them are professionals who make their living, support their families and take great pride in what they do and deserve our respect. We should be trying to make it easier on them instead of creating more obstacles for them to deal with. This letter is in loving memory of my father, Gerald J. Bartolotti Sr., who will forever be "King of The Road."

ALLISON BARTOLOTTI-DE FORT

To the Editor:

South Plainfield Elks, B.P.O.E #2298, would like to extend their sincere appreciation to local restaurateurs who donated gift certificates for a raffle to raise funds for veterans activities. On February 23, the Elks Central District Veterans Committee held their annual Veterans Dinner Dance. Local Veterans from the Menlo Park Soldiers home were in attendance and they enjoyed an evening of dinner, music and socializing with the Elks.

The committee raffled two "Dining Out" baskets which included din-

ner gift certificates donated by local businesses from the area. Baskets were valued at \$360 each. Robert Eckenstein, PER/Lodge secretary would like to thank the following establishments from South Plainfield for their generous donations: Carmen's Trattoria-Carmen Troia, Flanagan's-John Ziminski, Sherban's Diner-Peter Ganiaris and the managers from Red Lobster, Uno Chicago Grill and Red Robin.

The funds raised enable the Elks to continue the following programs for the veterans: monthly bingos, dinners/breakfasts hosted at our lodges, picnics, bus trips, clothing drives, holiday parties, individual care packages and general visits, just to name a few ways in which the Elks give back to our veterans.

Thank you for supporting our veterans! Your generosity is greatly appreciated!

DEBRA CZECH, EXALTED RULER

To the Editor:

In May 2006, I approached the borough council requesting permission for students from the South Plainfield High School Graphic Arts Department to videotape the council agenda and public meetings as a community service. The entire council and mayor agreed this would be a wonderful learning experience. The students are learning to tape the live meetings and then prepare the tapes for viewing on Comcast Channel 74.

There are many residents who cannot attend these meetings, but are interested in the operations of the council. Comcast airs the meetings as a public service.

The Boyle Memorial Foundation purchases all the supplies and funds the mailing of the tapes to Comcast. These videotapes have never been edited, but Comcast only airs one hour and 55 minutes of the tapes.

As viewers may have noticed, the Board of Education Budget hearing was stopped at one hour and 55 minutes, much to the dismay of the public.

The purpose of videotaping the council meetings is so the public can witness, first hand, the resolutions, ordinances and discussions which take place at a council meeting, not to hold a political arena, nor bash each other on their views or opinions.

We are all adults and need to present ourselves in a dignified light. The taping of these meetings has been ongoing for almost two years with decorum—let's keep it that way.

**RESPECTFULLY SUBMITTED,
DEBBIE BOYLE, THE BOYLE
MEMORIAL FOUNDATION**

LEGAL NOTICES

BOROUGH OF SOUTH PLAINFIELD MIDDLESEX COUNTY, NEW JERSEY

LEGAL NOTICE

ORDINANCE No. 1811

BE IT RESOLVED BY THE GOVERNING BODY OF THE BOROUGH OF SOUTH PLAINFIELD, MIDDLESEX COUNTY, NEW JERSEY, THAT:

Ordinance 1811 entitled: AN ORDINANCE AMENDING THE BOROUGH'S DEVELOPMENT REVIEW ORDINANCE TO ESTABLISH REQUIREMENTS AND CRITERIA FOR THE SUBMISSION OF A RECYCLING PLAN IN CONNECTION WITH LAND DEVELOPMENT APPLICATIONS was adopted on first reading and advertised in The Observer on Friday, February 29, 2008 and that a public hearing be scheduled for Monday, March 10, 2008 at 7:00 p.m. in the Municipal Building, 2480 Plainfield Avenue, South Plainfield, NJ 07080.

BOROUGH OF SOUTH PLAINFIELD

ORDINANCE NO. 1811

AN ORDINANCE AMENDING THE BOROUGH'S DEVELOPMENT REVIEW ORDINANCE TO ESTABLISH REQUIREMENTS AND CRITERIA FOR THE SUBMISSION OF A RECYCLING PLAN IN CONNECTION WITH LAND DEVELOPMENT APPLICATIONS.

BE IT ORDAINED by the Borough Council of the Borough of South Plainfield, in the County of Middlesex, and State of New Jersey as follows:

1. Subsection 805.2 entitled "Preliminary Plat" of Section 805 entitled "Plat Details" of Article VIII entitled "Subdivision Regulations" is hereby supplemented and amended by creating and adding the following:
R. Recycling Plan. A plan in the form of narrative description and diagrams or maps, shall be submitted for every development proposal for the construction of 50 or more units of single-family or two family housing, any multifamily or townhousing and any nonresidential development proposal for the utilization of 1,000 square feet or more of land. The plan shall include details as to the storage, collection, disposition and recycling of recyclable materials as require by the Recycling Ordinance of the Borough of South Plainfield, and shall comply with the requirements of Section 907.13.
2. Section 904 entitled "Site Plan Details" of Article IX entitled "Site Plan Regulations" is hereby supplemented and amended by creating and adding the following:
V. Recycling Plan. A plan in the form of narrative description and diagrams or maps, shall be submitted for every development proposal for the construction of 50 or more units of single-family or two family housing, any multifamily or townhousing and any nonresidential development proposal for the utilization of 1,000 square feet or more of land. The plan shall include details as to the storage, collection, disposition and recycling of recyclable materials as require by the Recycling Ordinance of the Borough of South Plainfield, and shall comply with the requirements of Section 907.13.
3. Section 907 entitled "Design Standards" of Article IX entitled "Site Plan Regulations" is hereby sup-

plemented and amended by creating and adding new Subsection 907.13 entitled "Recycling Facilities and Design Standards" to read as follows:

908.13 Recycling Facilities and Design Standards.

- a. Single-family and two-family dwellings. Each single-family dwelling unit shall be designed to provide a location containing at least 18 cubic feet of space per unit for the storage of designated recyclable material. The location shall be clearly marked as such on floor plans of the dwelling unit.
- b. Multifamily and townhouse dwellings. Recycling facilities shall be provided for multifamily and townhouse dwellings in accordance with the following:
 1. Each multifamily and townhouse dwelling unit shall be designed to provide a location containing at least 12 cubic feet of space per unit for the storage of designated recyclable materials. The location shall be clearly marked as such on floor plans of the dwelling unit.
 2. There shall be included in any new multifamily housing development which requires subdivision or site plan approval one or more indoor or outdoor recycling areas for the collection and storage of residentially generated recyclable materials. At minimum, there shall be one recycling area for each 75 units or portion thereof. The dimensions of the recycling areas shall be sufficient in size to accommodate recycling bins or containers which are of adequate size and number and which are consistent with anticipated usage and with current methods of collection in the area in which the project is located. Outdoor recycling areas shall include bins or containers set on a concrete pad. The dimensions of the recycling areas shall be adequate to accommodate the necessary bins or containers and shall be consistent with the district recycling plan and the Borough of South Plainfield Recycling Plan.
 3. The recycling areas shall be conveniently located for the residential disposition of source-separated recyclable materials, preferably near, but clearly separated from refuse containers.
 4. Signs clearly identifying the recycling areas and the materials accepted therein shall be posted adjacent to all points of access to the recycling areas. Individual bins or containers shall be equipped with signs indicating the materials to be placed therein.
 5. Each recycling area shall be enclosed on three sides by a solid fence, six feet in height, and landscaping shall be provided around the fence.
- c. Nonresidential developments. Nonresidential developments shall provide recycling facilities in accordance with the following:
 1. All nonresidential developments shall submit a recycling plan that includes the following information:
 - (a) A description of the type of business expected to occupy the building. If, during site plan or subdivision review, the

business type is unknown, a recycling plan will be submitted as part of the tenancy review process prior to issuance of a certificate of occupancy.

- (b) A list of recyclable materials expected to be generated.
- (c) The approximate amount of each recyclable material expected to be generated, in cubic yards or tons, monthly or annually, and the size and type of containers that will be used to store them.
- (d) Material separation and handling practices, which shall include the following:
 - (1) A list of areas where material is expected to be generated.
 - (2) A method, in a manner acceptable to the recycling coordinator, of storing material at the point of generation, where applicable.
 - (3) A method of moving material from the generation area to the storage area, where applicable.
 - (4) The location of the designated storage area.
 - (5) The size of the storage area. An explanation of the method used to determine the size of the storage area shall be provided.
 - (6) The method of material removal, including frequency of pick-up and the type of vehicle expected to be used for pick-up.
- d. Storage Areas. Storage areas, both indoor and outdoor, shall meet all fire, building and health codes and requirements of the Borough.
4. Appendix A entitled "Borough of South Plainfield Subdivision Check List" and Appendix B entitled "Borough of South Plainfield Site Plan Check List" are hereby supplemented and amended by creating and adding the following:
 - () Recycling Plan meeting the requirements of Section 907.13 of the Development Review Ordinance.
5. If any article, section, subsection, sentence, clause or phrase of this Ordinance is, for any reason, held to be unconstitutional or invalid, such decision shall not affect the remaining portions of this Ordinance and they shall remain in full force and effect.
6. In the event of any inconsistencies between the provisions of this Ordinance and any prior ordinance of the Borough of South Plainfield, the provisions hereof shall be determined to govern. All other parts, portions and provisions of the ordinances of the Borough of South Plainfield are hereby ratified and confirmed, except where inconsistent with the terms hereof.
7. This Ordinance shall take effect upon final passage, publication according to law.

ATTEST:

Vincent Buttiglieri/Municipal Clerk

\$239.40

February 29, 2008

To find out
what's
happening
in
South Plainfield

Visit the borough's official web site at

southplainfieldnj.com

Mayor & Council • Borough Officials and Agencies • Meeting Dates • Police - Fire - Rescue Squad • Recreation • Senior Center • Upcoming Events • South Plainfield Business Association Listing • Community Bulletin Board • Yard & Garage Sales, Classifieds, Messages

ADVERTISE YOUR BUSINESS ON OUR WEB PAGE

Apply Now for Adele deLeeuw Scholarship

High school seniors wishing to apply for Adele deLeeuw Scholarships can obtain applications from the school guidance office. The scholarships range from \$1,000 to \$8,000. Deadline for submission of applications is March 15.

Previous winners already in college are also eligible to apply. They must submit complete official transcripts of college grades with new applications.

This is the 13th year the scholarships have been offered. To date, the Adele deLeeuw Scholarship Fund, which is a fund of the Plainfield Foundation, has awarded more than \$800,000. The awards are made in accordance with the terms of a bequest from deLeeuw, author of 75 books, journalist and arts activist.

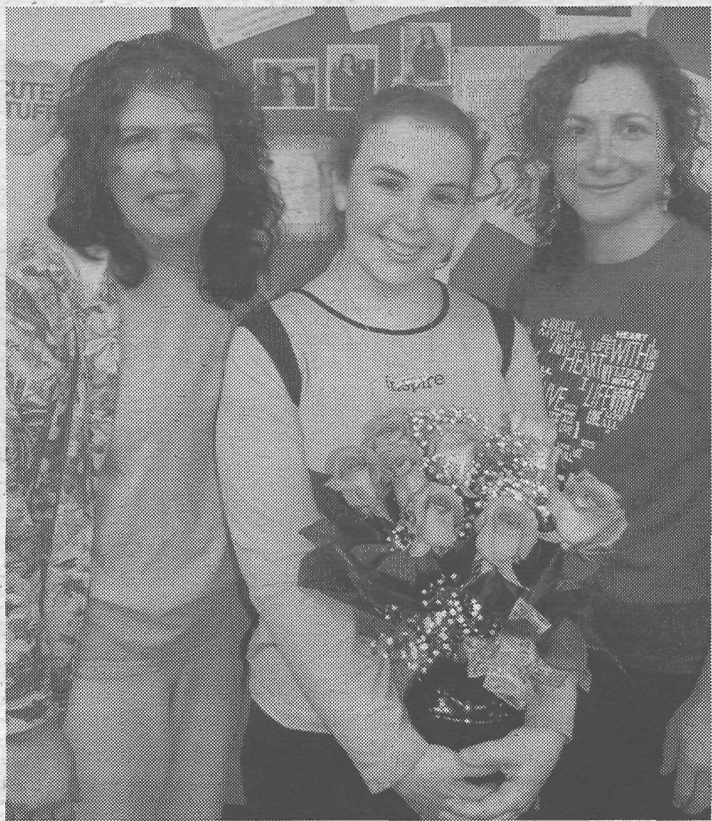
The Plainfield Rotary Scholarship Foundation, headed by Michael R. Townley, acts as selector for the scholarships. Five area Rotary Clubs assist in the process. Only students from high schools in Plainfield, North Plainfield, South Plainfield, Warren, Watchung, Edison, Scotch Plains and Fanwood are eligible. Location of high school, not student's residence, is the qualifying factor. The student must also be accepted by an accredited college or university.

Applicants must plan to major in one of the following areas of study: art, engineering, writing, journalism or poetry. They must demonstrate the scholastic aptitude and interest to pursue study in one of these specified areas. They must also prove financial need.

Interested students should consult their guidance counselors to obtain the necessary application form. Questions may be directed to Sally Young, scholarship administrator, at (732) 381-6269.

AARP Seeks Volunteers

Chapter #4144 of AARP is recruiting retired or semi-retired persons to join their chapter and engage in community service activities. If interested, call Mary at (732) 752-3764.



2008 Curves Sweetheart Jennifer Smith (center) with Curves owners Jerri Hochron and Elisa Bennett.

Jennifer Smith Named 2008 Curves Sweetheart

Curves International has named Jennifer Smith, a resident of South Plainfield, as the International Sweetheart for the North East region. Owners Jerri Hochron and Elissa Bennett surprised Jennifer with the news of her selection on February 14 and presented her with a bouquet of flowers and a gift bag valued at over \$300.

Jennifer was one of only six women chosen throughout the United States and Canada awarded for her incredible weight loss and dedication to fitness during the past year. More than 100 contestants were nominated and one contestant from each of the six regions competed for the top prize. Voting took place during the month of January and early February.

Jennifer has been a member of Curves for a little over a year and during that time she lost a total of 146½ pounds and 102 inches. She

works out at Curves approximately five days a week and also exercises at home. She has undergone an amazing transformation, both externally and internally. Thanks to Curves, she has also overcome health issues including obesity and back pain.

Joining Curves has given Jennifer Smith and many other women in this community the power to amaze them.

In her winning essay she said, "My self-esteem has risen and I am now the person I've always wanted to be. My goal in life is to inspire others, like I have the women at Curves. I have hit my goal weight of 150 pounds and I could never have done it without my mother, the staff and the wonderful ladies at Curves."

Curves is located at 27 South Plainfield Ave. Their telephone number is (908) 757-4422.



Would you be flattered if you had received a Valentine card that read:

Your hair is like a flock of goats, moving down the slopes of Gilead ...?

(Song of Solomon, 6:5b, RSV)

Or, perhaps:

His cheeks are like beds of spices, yielding fragrance.

His lips are lilies, distilling liquid myrrh, ...?

(Song of Solomon, 5:13, RSV)

Although you might prefer the Hallmark version, consider the source of these verses. The Old Testament book "Song of Solomon" (in some versions, "Song of Songs") is all about love, including the sexual attraction between a young man and young woman. It is a passionate dialogue between them, incorporating the courtship customs and literary style of the late sixth century B.C. Surprisingly, the book has no explicit mention of God. Why is this collection of love poems in our canon of Holy Scriptures? What is the purpose of this book?

From beginning to end, the book is a liberating celebration of human sexuality as something not merely functional or even erotic, but as some-

thing to be enjoyed, not in a casual way, but with total commitment. It is this commitment that makes two people "one flesh" (Gen. 2:24). Love joins two people together in a relationship which colors all that they do and are. In the "Song of Solomon" there is no trivializing of sexuality—only the joyful acceptance of the most powerful force in human existence. Surely love, including sexual love, is under the umbrella of God's love. It is part of the way God created us.

As we reach the end of February, leaving Valentine's Day behind, let us continue to be thankful for our relationships. Perhaps we can begin by reading this book of the Old Testament together with a spouse or significant other (a good commentary will help). As we, a married couple of 47 years, have read through the "Song of Solomon" in our devotions together, we really felt the passion—and feelings—we still have for each other. It was beautiful. Thank God for the gift of sexuality that has given us a rich life, a terrific heritage and blessed families.

LifeLines is a monthly Observer column, written by area churches. This article comes from Gene and Joanne Bloomwell of Pilgrim Covenant Church.

policereport

- On February 19 Abdel Q. Batts, 29, of Plainfield was arrested for hindering apprehension and driving on a suspended license.

- On February 20 Gnanasamb Sivakumaran, 39, of Edison was arrested for driving while intoxicated, reckless driving and failure to observe a traffic signal.

- On February 21 Steven B. Quince, 24, of Plainfield was arrested for driving on a suspended license and failure to maintain lamps.

- Ingrid Chirico, 32, of Colonia was arrested at Sears Essentials for shoplifting \$23 worth of cosmetics.

- Rajal K. Patel, 28, of Metuchen was arrested for failure to wear a seatbelt and an outstanding warrant.

- On February 22 a Somerville, Mass. resident reported the passenger side window of their vehicle had been broken while parked at Holiday Inn.

- On February 23 Jahad Sharrief, 30, of Bloomfield was arrested for driving with a broken windshield and an outstanding warrant.

- A McKinley Street resident reported the theft of three aluminum rims worth \$1,000.

- On February 24 a Kenyon Avenue resident reported that an egg had been thrown at their home.

- On February 25 Irving Marcus Co. on Front Street reported that their front door glass had been broken. Nothing was taken.

Here's some great news for newspaper advertisers....

- 73% of New Jersey shoppers use newspapers as their primary source for local shopping information
- 2 out of 3 consumers rely on newspapers for information related to purchases.
- Ads are second only to local events in reader interest.

**Want your share of the market?
Advertise in the Observer.**

Call 908-668-0010.

Information reported in a Statewide Market study conducted by Belden Associates for New Jersey Press Association.

Cultural Arts is Sponsoring a Performance of "Love Letters"

The South Plainfield Cultural Arts Commission is sponsoring a performance of "Love Letters" by A.R. Gurney, a tantalizing romantic show that offers lovers of all ages an opportunity to extend that Valentine experience. "Love Letters" is being performed at the Edison Valley Playhouse on Oak Tree Road in Edison.

The Cultural Arts Commission is celebrating its 25th anniversary this year and to celebrate this momentous event the organization has arranged an assortment of cultural programs throughout the year to benefit the community and the students of South Plainfield, this being just the first.

Members of the community are invited to attend "Love Letters" on Sunday, March 2 at 3 p.m. at the Edison Valley Playhouse, as the Cultural Arts Commission presents this event free of charge. Seating is limited and registration is required.

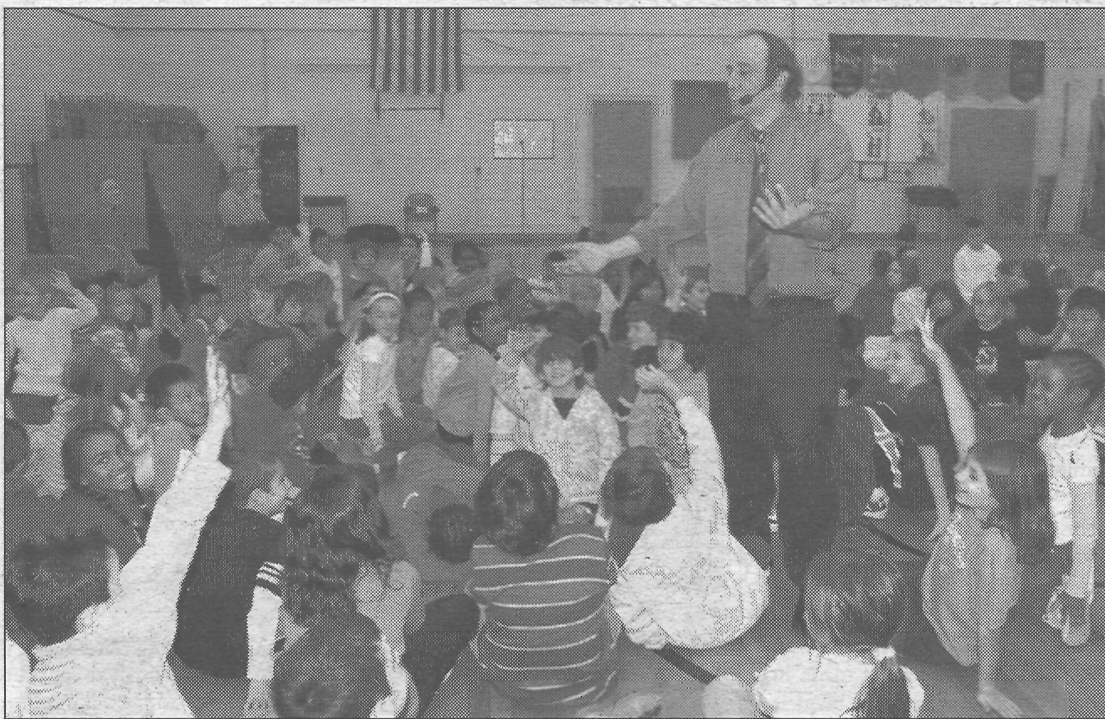


"Love Letters" will feature Jeff Maschi and Betsy Robin Schwartz, bringing to life the story of Andy and Melissa; childhood friends whose lifelong

friendship and love for each other is lifted off the pages of love letters and spoken through written word to capture the emotions they had for each other.

To reserve your tickets to see "Love Letters," call Pam Stefanek at (908) 754-2381. Leave a detailed message including your full name, phone number and the number of tickets required. Tickets are on a first-come, first-served basis and confirmation of tickets will only be to those who are eligible (first 99 ticket holders).

For information on how you can become a member of the South Plainfield Cultural Arts Commission, or be included on their mailing list for upcoming events, contact Pam Stefanek at (908) 754-2381.



Dave Street asks students what positive things they could say about each other to promote respect.

Franklin Students Learn the Value of Getting Along with Each Other

By Jane Dornick

Motivational speaker, author and environmentalist Dave Street returned to his alma mater to present his "How to Get Along with Each Other" program at Franklin School recently that received applause from students and faculty alike. His theatrical presentation communicated important points, messages and advice about life and school including: what respect really means and how we all want to be respected, the importance of trust and how to become people that can be trusted and how to handle gossip in a positive way.

Street's step-by-step guidelines for managing anger began with what he called "not saying anything until some-

thing good comes out, and if you don't have something nice to say then don't say anything." Another suggestion was to put their hands together to distract and reduce stress along with teaching students deep breathing exercises. And lastly, to "make yourself do something good" by turning anger around into something positive.

In order to demonstrate how gossip hurts people, Street chose a student to leave the room telling him that the audience was going to "talk" about him assuming something negative was going to happen. However, he turned the tables and had students say something positive about the young boy. "Wouldn't you like to grow up in a world where everyone only said good things?" asked Street.

A longtime South Plainfield resident, Street has been giving presentations at schools and events around the country for over 15 years and is one of the emcees of Ecofest, New York City's environmental festival. He developed his new book, "How the Land of Litter Became the Kingdom of Clean," as a result of his work with the N.J. Clean Communities program, for which he has been a State-approved presenter for many years. He has been honored by the N.J. State Senate for his work and has a master's degree in education from Rutgers University.

To learn more about Street and his programs, visit his Web site at www.davestreet.net.

LEGAL NOTICES

BOROUGH OF SOUTH PLAINFIELD MIDDLESEX COUNTY, NEW JERSEY

LEGAL NOTICE ORDINANCE 1812

BE IT RESOLVED BY THE GOVERNING BODY OF THE BOROUGH OF SOUTH PLAINFIELD, MIDDLESEX COUNTY, NEW JERSEY, THAT:

Ord. 1812 entitled: AN ORDINANCE REVISING CHAPTER 151 OF THE CODE OF THE BOROUGH OF SOUTH PLAINFIELD ENTITLED: "RECYCLING" was adopted on first reading and advertised in The Observer on Friday, February 29, 2008 and that a public hearing be scheduled for Monday, March 10, 2008 at 7:00 p.m. in the Municipal Building, 2480 Plainfield Avenue, South Plainfield, NJ 07080.

ORDINANCE NO. 1812

AN ORDINANCE TO REVISE CHAPTER 151 OF THE CODE OF THE BOROUGH OF SOUTH PLAINFIELD ENTITLED: "RECYCLING."

Be it ordained by the Governing Body of the Borough of South Plainfield, New Jersey, that:

151-1. Definitions

The following words and phrases shall have the meanings respectively ascribed to them by this section:

ALUMINUM CANS – means food and beverage containers made entirely out of aluminum.

AUTHORITY – means the Middlesex County Improvement Authority, a public body corporate and politic of the State of New Jersey, organized by the County pursuant to the County Improvement Authorities Law (N.J.S.A. 40:37A – 44 et seq.).

AUTHORITY-COLLECTED RECYCLABLES – means the following Designated Recyclables generated within the geographic boundaries of the Municipality: Newspaper, Glass Containers, Aluminum Cans, Corrugated Cardboard from residential and commercial sources, Steel Cans, Plastic Containers, Mixed Paper and Textiles.

BOARD – means the Board of Chosen Freeholders of the County of Middlesex, New Jersey.

BRUSH – means branches, woody plants, and other like vegetative materials that do not exceed four (4) inches in diameter, and Christmas trees. "Brush" does not include leaves or grass clippings.

BULKY WASTE – means I.D. Type 13 Waste as defined by N.J.A.C. 7:26 – 2.13(g)1.iii.

COMMINGLED CONTAINERS – means the 20-gallon plastic containers to be used by the Residents to place Plastic containers, Glass Containers Aluminum Cans and Steel Cans at the curb for collection by the Contractor, or such other container designated by the Authority for such use.

CONSTRUCTION AND DEMOLITION WASTE – means I.D. Type 13C Waste as defined by N.J.A.C. 7:26-2.13(g)1.iv.

CONTRACTOR – means the contractor selected by the Authority to provide the Recycling Services pursuant to the Recycling Contract.

CORRUGATED CARDBOARD – means uncontaminated corrugated cartons and other boxes made of corrugated cardboard.

COUNTY – means the County of Middlesex, New Jersey.

COUNTY PLAN – means the Middlesex County district solid waste management plan, adopted by the Board

pursuant to the Solid Waste Management Act, which provides for the collection, disposal and/or recycling of solid waste generated within the geographic boundaries of the County, as the same may be amended from time to time.

COUNTY-WIDE RECYCLING – means the collection and marketing program for Authority-Collected Recyclables established by the County and the Authority for all participating municipalities in the County.

DESIGNATED RECYCLABLES – means all recyclable materials that are designated by the County and the County Plan as materials that must be source-separated from Municipal Solid Waste (Type 10), Construction and Demolition Waste (Type 13C) and Vegetative Waste (Type 23) at the point of generation, as specified in Section 151-5 below. The County may add or delete certain recyclable materials to be Designated Recyclables from time to time pursuant to a duly adopted amendment to the County Plan approved by the New Jersey Department of Environmental Protection.

DROP-OFF CENTER – means the Borough's Recycling Drop-off Center located on Kenneth Avenue.

ELECTRONICS – means televisions, CPU's, monitors, laptops and mercury-containing devices.

GLASS CONTAINERS – means glass containers used for packaging food or beverages.

GRASS CLIPPINGS – means green, freshly clipped mowings from residential lawns and yards. Twigs, brush and leaves are excluded.

LEAVES – means only leaves from trees, shrubs, bushes or plants, and excludes any other type of vegetative waste.

MASONRY/PAVING MATERIAL – means asphalt, block, brick, cinder and concrete.

MIXED PAPER – means glossy inserts, magazines, telephone books, junk mail, colored paper, computer paper, office paper, paperboard (chipboard and pressboard), non-metallic wrapping paper, soft-cover books, hard-cover books with cover removed, and fine paper.

MIXED PAPER CONTAINER – means a covered 14-gallon container in which Residents place Mixed Paper at the curb for collection by the Contractor, or such other container designated by the Authority for such purpose.

MOTOR OIL – means used motor oil which has been drained from automobiles and classified by the New Jersey Department of Environmental Protection as X721.

MUNICIPAL SOLID WASTE – means I.D. Type 10 Waste as defined by N.J.A.C. 7:27-2.13(g)(1)(i).

NEWSPAPER – means paper of the type commonly referred to as "newsprint" and distributed at stated intervals, usually daily or weekly, having printed thereon news and opinion, containing advertisements and other matters of public interest. Expressly excluded are all magazines or such periodicals as well as other paper products of any nature whatsoever.

OFFICE PAPER – means white bond paper, white stationery, white copier paper, white note pad paper, white index cards, white paper forms and tabulating cards.

PLASTIC CONTAINERS – means soda bottles made of PETE (SPI Code #1) and milk, water and laundry product bottles made of HDPE (SPI Code #2).

PLASTIC FILM – means stretch wrap, shrink wrap and

plastic shopping bags.

RECHARGEABLE BATTERIES – means Nickel Cadmium (Ni-Cd), Nickel Metal Hydride (Ni-MH), Lithium Ion (Li-Ion) and Small Sealed Lead (Pb) batteries.

RECYCLING – means any process by which materials that would otherwise become municipal solid waste and that may be collected, separated and processed are returned to the economic mainstream in the form of raw materials or products.

RECYCLING COORDINATOR – means the individual designated by the Mayor and Council of the Borough of South Plainfield to oversee and supervise recycling efforts in the Borough and to implement the County Plan. Responsibilities shall include, but not be limited to: (1) the development of a program to enforce the Recycling Ordinance; (2) responding to citizen inquiries concerning the Program; (3) attendance at scheduled meetings with the Authority; (4) preparation and distribution of literature describing the Program; and (5) development of a public education/awareness campaign describing the program.

RECYCLING DROP-OFF CENTER – means any facility designed and operated solely for receiving, storing, processing and transferring source-separated nonputrescible recyclable materials, such as metal, glass, paper, plastic containers and corrugated and other cardboard, or other recyclable materials.

RECYCLING SERVICES – means all of the duties, obligations and services to be provided by the Contractor that are related to the collection, transportation, separation, processing, storage, sale or disposition, or any combination thereof, of the Authority-Collected Recyclables and the return of same to the economic mainstream in the form of raw materials or products.

RESIDENTS – means persons dwelling within the Borough of South Plainfield that are required to recycle Designated Recyclables pursuant to the Recycling Ordinance.

STEEL CANS – means tin-plated, bi-metal and other ferrous food and beverage containers.

TEXTILES – means clean, dry clothing or other fabric measuring at least one foot by one foot in size.

TIRES – means rubber-based scrap automotive, truck and equipment tires.

VEGETATIVE WASTE – means I.D. Type 23 Waste as defined by N.J.A.C. 7:26-2.13(g)1.v.

WHITE GOODS – means washers, dryers, ranges, refrigerators and air conditioners.

WOOD SCRAP – means unfinished lumber, including pallets, that has not been chemically treated, painted, resin-coated or otherwise surface-treated, laminated or bonded, and not similarly altered from its natural condition that has been generated during new construction.

151-2 Program Established

a) There is hereby established a program for the mandatory source separation from the municipal solid waste stream by the single- and multi-family residential, commercial, office park, industrial, institutional and governmental solid waste generators of the Borough of South Plainfield at the point of generation of the following items: newspaper, aluminum cans, glass containers, corrugated cardboard, steel cans, plastic containers, mixed paper, textiles, leaves, brush, motor oil, masonry/paving material, rechargeable batteries, tires, white goods and

such other recyclable materials to be added or deleted as Designated Recyclables by the County of Middlesex pursuant to a duly adopted amendment to the County Plan approved by the New Jersey Department of Environmental Protection.

b) For commercial, office park, industrial, institutional and governmental solid waste generators of the Borough of South Plainfield, the following additional recyclables are mandatory source-separated items: electronics and fluorescent bulbs.

c) For commercial, office park, industrial, institutional and governmental generators of construction debris at new construction sites, the following additional recyclable is a mandatory source-separated item: wood scrap.

d) For warehouses, retail establishments and supermarkets with twenty-five or more employees, the following additional recyclables are mandatory source-separated items: plastic film, including stretch wrap, shrink wrap and plastic shopping bags.

151-3 Mandatory Source-Separation and Curbside Pickup

a) As of the effective date of this chapter it shall be mandatory for all residents to separate for recycling Designated Recyclables as follows:

- 1) newspaper and corrugated cardboard must each be placed at the curb in segregated, tied bundles not greater than twelve (12) inches in height;
- 2) mixed paper, including office paper, must be placed at the curb in the mixed paper container;
- 3) glass containers, aluminum cans, plastic containers and steel cans shall be commingled in a commingled container; and
- 4) textiles shall be segregated in a textile bag.

Only Authority-collected recyclables that have been properly separated and prepared will be collected by the contractor. Any Authority-collected recyclables that are not prepared for collection in this manner will be left at the curb by the contractor. Residents may bring recyclables to the Borough's Drop-off Center in lieu of placing them at the curb for collection.

b) Authority-collected recyclables shall be segregated at the Drop-off Center site in the containers provided by the contractor.

c) Used motor oil shall be brought to the Drop-off Center by residents and placed in the used oil tank. Commercial generators of used oil shall not use the tank at the Drop-off Center, but shall recycle used motor oil through a state-licensed used oil hauler.

d) Residents shall bring brush to the Municipal Yard Waste site adjacent to the Drop-off Center in their own non-commercial vehicles to which they have affixed a Yard Waste decal that has been issued by the Borough for the current year.

e) Leaves shall be bagged in biodegradable paper bags and set at the curb for collection during November and December. Leaves may also be brought to the Municipal Yard Waste site by residents in their own non-commercial vehicles to which they have affixed a Yard Waste decal

that has been issued by the Borough for the current year.

f) Residents who cannot manage their grass clippings at home through cut-it-and-leave-it lawn care or home composting may bring up to three (3) thirty-gallon (30-gallon) bags of grass clippings to the Municipal Yards Waste site in their own non-commercial vehicles to which they have affixed a Yard Waste decal that has been issued by the Borough for the current year.

151-4 Basic Service

a) The Authority-Collected Recyclables shall be collected on a bi-weekly basis at curbside at (1) all single-family and duplex residential locations, all multi-family dwellings with four (4) or fewer units and all townhouses that are accessible to the Contractor's trucks and that are not participating in a recycling collection program provided by their homeowners' association or landlord or utilizing a local drop-off as described in 151-4b) below.

b) All multi-family dwellings with five (5) or more units that are not participating in another recycling collection program, public schools, public building, hospitals and other institutions shall deposit the Authority-Collected Recyclables in on-site containers to be provided by the Contractor. All commercial generators shall recycle Designated Recyclables directly to recycling markets, or through a recycling hauler. Commercial generators may recycle the following Designated Recyclables at the Borough's Drop-off Center: newspaper, corrugated cardboard, mixed paper, glass containers, plastic containers, aluminum cans and steel cans.

151-5 Commercial, Industrial and Institutional Compliance

a) As of March 1, 2008, it shall be mandatory for all commercial, industrial, institutional, governmental and office park solid waste generators to separate the following Designated Recyclables from other solid waste:

- 1) Newspaper
- 2) Clear, brown and green glass containers
- 3) Plastic containers
- 4) Aluminum cans
- 5) Steel cans
- 6) Corrugated Cardboard
- 7) Mixed paper/office paper
- 8) Electronics
- 9) Fluorescent bulbs
- 10) Textiles
- 11) Motor oil
- 12) Brush
- 13) Leaves
- 14) Wood Scrap
- 15) Masonry / paving material
- 16) Rechargeable Batteries
- 17) Tires
- 18) White goods (all devices that contain Chlorofluorocarbons (CFC's) must be properly evacuated by licensed individuals and all recovered CFC's must be sent to a recycler that has been approved by the U.S. Environmental Protection Agency.)
- 19) Plastic film (only from warehouses, retail establishments and supermarkets with twenty-five or more employees)

b) Recyclables shall be separated and prepared

SCHOOL BOARD Notes

• The BOE approved the Pandemic Influenza Management Plan upon the recommendation of the superintendent.

• Catherine Bonanno was appointed after school ESL teacher at Riley and Susan Fenning at Franklin.

• Stacey Eager was appointed Roosevelt duty aide.

• Winter coach appointments for 2007/2008 are as follows: middle school-Steven Johnston, assistant wrestling; Kevin Hajduk, girls track; Angela Raimondo, assistant track and Joseph Bennett, head softball. High school-Raymond Ciecwisz, head baseball; William Mosca and Patrick Sarullo assistant baseball; Mike DeLucca and Mike Battist, community volunteers; Richard Fonti head boys track, Kevin McCann and Christopher Fish, assistant boys track; William Milone, head girls track; Leonard Vacarro and Colleen Hook assistant girls track; Michael Kavka, head golf; Matie Zeno, head boys tennis; Donald Panzarella, head softball, Nick Scalzo and Joseph Blonda, assistant softball; Tammy Zurka, head girls lacrosse; Karl Spolarich assistant girls Lacrosse and Tomas Rizk, weight training.

• Special consultant appointments as needed basis were: speech consultants Megan Avitto, Maria Teresa Jimenez and Lauren Marcus; Rasheda Ahmed M.S CCC-SLP speech language evaluations and Steven Dyckman, M.D. child, adolescent and adult psychiatry, child evaluation center.

• A bid for food service management was authorized.

• A proposal from DiCara/Rubino architects to perform a facility study was approved.

• The board authorized the purchase of parts from Best Electric Motor Co.



Congratulations to the South Plainfield Middle School Wrestling Tigers team for winning the New Jersey Grade School Wrestling League Tournament recently, by a score of 227 points. The Tigers had an 18-1 dual meet record with their only loss coming from Phillipsburg.

Classmates Sought for SPHS 25-Year Reunion

The SPHS Class of 1982 25-year reunion will be held on Saturday, April 5 at The Embassy Suites Hotel in Piscataway. The cost is \$75 per person and includes open bar, buffet dinner and dessert. Payment is due by March 21 to Rosanne Demico-Iardo, 11735 Dartmoor Court, Jacksonville, Fla. 32256.

The reunion committee is seeking classmates (last name first) we have not been able to contact. Please contact Rosanne at (904) 565-8334 if you know their location.

Agnone Maryann, Akridge Ulysess, Alexander Loetti, Baita Joseph,

Bautista Regina, Bellot Andrea, Bevaqua Bill, Bicz James, Bierworth Paul, Blackford Erin, Bowser Donald, Boyle Maryann, Britland Patti, Burgess Pierre, Butler Trayce, Dalto John, DiMarcello Nick, Durso Joseph, Dunbar Annemarie, Cables Dawn, Calderone Maryann, Carver Barbara, Castro Dawn, Chabok Robert, Conti Christopher, DeSousa Bonnie, Dispenza Lauren, Dipaola Lisa, Delpaoli Michael, Fetz, Diane, Flatley Dawn, Flynn Craig, Gangemi Dina, Griffiths Wendy, Groelly Dawn, Handelman Susan, Hatcher David, Hornick Richard, Hudak Dennis, Hunter Robert, Indigo Joseph, Ivaniuc Stefan, Johnson Grenda, Jurasik Leon, Kaspereen Theresa, Keith Michael, Koep Matthew, Kowski Karol, Kopf Dana, La Ferrera James, La Patta Annmarie, Lehman Christopher, Leonard Leo, Löckley

Michael, Loggia Joseph, Lynch Mark, Matheson Sherri, Mazro Elizabeth, McGall Robert, McGuire Craig, Merola Darlene, Meyers Gary, Miholics Darlene, Miller Michael, Miltner, William Morse William, Napoleon Cathy, Nawrocki Lora, Obester Robert, Parello Paul, Paterson carol, Pharms Valerie, Quarles Darryl, Rafalko Robert, Redden Nancy, Rennie Lori, Rossi Kevin, Rowe Paul, Ryan Renee, Santa Barbara Diane, Schneider Joseph, Seniuk Edward, Squindo Harold, Sukovich Richard, Sykes Joy, Sylvester Jonathen, Szabad Mark, Tallman, Emma and Paul, Thompson Michael, Van de Vaast Martin, Vondran Ellen, Wagstaff Karla, Wilkinson Jeff, Williams Lynn, Wilshire Tracey, Winstead Doris and Michael, Yoson Andrea.

Check out our Web site at: spobserver.com

Your #1 Source for South Plainfield News
www.spobserver.com • email: spobserver@comcast.net

LEGAL NOTICES

in accordance with the requirements of the Borough's Drop-off Center, or of the recycling market or recycling hauler employed by the generator.

c) As of March 1, 2008, it shall be mandatory for all retail and wholesale businesses, restaurants, taverns, schools, institutions, warehouses, construction sites, factories, offices and other unenumerated retail commercial establishments to adhere to the requirements of Subsection a) above regarding mandatory separation of Designated Recyclable items. With regard to the above-referenced businesses, the following rules and regulations concerning recycling shall apply:

1) The owner, operator, or in the case of construction, any contractor employed by the owner, are responsible parties for the set up and maintenance of the recycling system. Said recycling system shall provide for the separation of any of the mandated recyclables from the commercial waste stream, as set forth in Subsection a) of this section.

2) Recycling containers must be clearly marked and recycling containers must be free of wet garbage or other non-recyclable trash. Additionally, wet garbage and trash must not contain recyclables. All containers for recyclables and wet garbage must be adequate to hold materials between pickups.

3) Notice in restaurants, food stores and company cafeterias shall advise patrons, customers and employees that recycling is mandatory, and separate recycling containers must be provided to allow patrons, customers and employees to cooperate with the recycling system.

4) The responsible party, as defined above (owner/operator/contractor employed by the owner) shall be fully responsible for the removal of recyclables to either a recycling center or recycling market.

5) The owner/operator/contractor employed by the owner shall supply to the Borough of South Plainfield Recycling Coordinator annual reports providing the weight and disposition of each recyclable generated by said responsible party, unless the responsible party causes said tonnage reports to be provided to the Recycling Coordinator by the recycling market or recycling hauler.

6) The owner/operator/contractor employed by the owner, for failing to adhere to the requirements of this chapter, will be given a ten-day notice of violation within which to correct the violation. In the event that, after notice of violation has been issued, the violation has not been corrected within the ten-day notice of violation time period, the owner/operator/contractor employed by the owner shall receive a warning notice. Thereafter, for subsequent violations the owner/operator/contractor employed by the owner may be fined in accordance with Section 151-12 of the chapter.

151-6 Multi-Family Housing Requirements

As of the effective date of this chapter, it shall be mandatory for owners, superintendents, or operators of garden apartments, condominiums and low and high rise apartments to set up and maintain a recycling program of curbside collection and/or recycling drop-off centers for convenient access by residents.

(1) In developments consisting of 25 or more multi-family residential housing units, a recycling plan must be implemented that provides for adequate storage of recyclables within each dwelling and convenient access to adequate indoor or outdoor drop-off facilities. The plan must comply with the requirements of section 907.13 of the Borough's Development Review Ordinance.

a) Where curbside collection of recyclables is not available, a recycling drop-off area must be adjacent to, but clearly distinct from, each garbage disposal area in the development. Containers must be clearly marked, the area neatly maintained and recyclables must be free of wet garbage and wet garbage may not contain any recyclables.

b) Where curbside collection of recyclables is to be available, access for such collection shall be designed so as to provide an adequate turning radius for collection vehicles without interference from parked cars or other obstacles. The owner, superintendent or resident manager shall provide a designated area for curbside collection at each unit.

(2) The owner, superintendent or resident manager shall publish rules and regulations for tenants and condominium owners' compliance with mandated recycling and the availability of the recycling drop-off or curbside collection to new residents and at least annually. Owners, superintendents and managers shall supply copies of the notices given to the tenants and condominium owners about the recycling rules and regulations to the Borough of South Plainfield Recycling Coordinator annually.

(3) The owner, superintendent or manager shall provide the Borough of South Plainfield Recycling Coordinator with proper documentation annually of the weights and disposition of the amount of recyclables removed from their sites.

151-7 Permitted Disposal of Recyclables

Where newspaper or other Designated Recyclables are used to wrap or dispose of solid waste they may be discarded or disposed of for collection with the usual solid waste.

151-8 Scavenging

Scavenging of all Designated Recyclables set at the curb or deposited at the Borough's Drop-off Center is explicitly prohibited.

151-9 Authority to Establish Rules

a) Subject to the approval of the Borough Council, the Recycling Coordinator is authorized to establish and promulgate reasonable regulations for the administration and publication of the procedures provided for by this chapter.

b) The Recycling Coordinator shall also be responsible for coordinating the activities of the Borough, the Authority and the contractor for establishing the program of collection of all Designated Recyclables, for coordinating the transition from the borough drop-off system to a system where Authority-collected recyclables

are collected by the contractor and all other Designated Recyclables are collected by the borough and for attending periodic meetings with the Authority and the contractor. The borough shall notify the Authority if a new Recycling Coordinator is appointed.

151-10 Public Education/Awareness Program; Literature

The Recycling Coordinator shall prepare literature and other educational materials describing, among other things, (i) the Borough of South Plainfield Recycling Program, established pursuant to this chapter, (ii) the County-wide Recycling Program and the recycling services to be provided within South Plainfield, (iii) the Designated Recyclables to be source-separated, (iv) the manner or method of preparing source-separated recyclable material for collection, and (v) the location and schedules for collection. The borough shall provide for distribution of all approved literature and other educational materials to all of its private, commercial and institutional residents and shall pay the costs associated with the preparation and distribution of same.

151-11 Recycling of Construction and Demolition Waste

When issuing any building permit, the building code official will provide the permittee with written instruction on proper disposal and recycling of construction and demolition waste. The building code official will furnish a Notification of Construction/Demolition Activity Form that the permittee must fill out and send to the Middlesex County Division of Solid Waste Management (MCDSSWM) within forty-eight (48) hours of the issuance of a municipal permit.

151-12 Enforcement

No garbage hauler shall collect for disposal any municipal solid waste that is mixed with any Designated Recyclable.

151-13 Violations and Penalties

Any person, firm, corporation or entity that violates or neglects to comply with any provision of this chapter or any regulation promulgated pursuant thereto shall, upon conviction thereof, be punishable by a fine not to exceed two thousand, (\$2,000.00) dollars. Said violation shall be enforceable by the Police Department, Board of Health and/or Recycling Coordinator of the Borough of South Plainfield or agents thereof.

151-14 Effects on Other Regulations

Except as to the provisions of this chapter relating to the procedure of disposal, collection and regulations concerning recyclable items, all ordinances and regulations relating to disposal and collection of solid waste are not repealed and shall remain in full force and effect. However, all ordinances or parts of ordinances inconsistent herewith are hereby repealed as to such inconsistencies only.

151-15 Severability Clause

Should any provision of this chapter be held invalid or unenforceable by any court of competent jurisdiction all other revisions shall, nevertheless, continue in full force and effect to the extent that the remaining provisions are fair, just and equitable.

ATTEST:
Vincent Buttiglieri/Municipal Clerk

\$638.40

February 29, 2008

Emil Leporino Memorial Golf Outing

CRANBURY GOLF CLUB WEST WINDSOR

TUESDAY . MAY . 6 . 2008

Providing scholarships for graduating SPHS seniors and providing educational incentive programs throughout the district.

Call Carolyn Allen 908.561.3275 or
Bob Longo 908.753.7004 x106

Co-sponsored by
South Plainfield Education
Foundation & South Plainfield
Business Association

The Stress Factory Comedy Club
presents

A Fundraiser to Benefit South
Plainfield Volunteer Rescue Squad

Headline Comic Vinnie Brand

Sunday, April 6, 2008

Tickets are \$35
Doors Open 5 p.m. / Dinner 7 p.m.



Vinnie Brand

THE STRESS
FACTORY
Comedy Club,
Bar and Grill
Located at
90 Church St.,
New Brunswick, N.J.

For tickets, please call (908) 754-2343

NOTICE TO PERSONS DESIRING CIVILIAN ABSENTEE BALLOTS

If you are a qualified and registered voter of the State who wants to vote by absentee ballot in the School Election to be held on April 15, 2008, kindly complete the application form below and send to the undersigned, or write or apply in person to the undersigned at once requesting that a civilian absentee ballot be forwarded to you. Such request must state your home address, and the address to which said ballot should be sent, if different, and must be dated and signed with your signature. If any person has assisted you to complete the absentee ballot application, the name, address and signature of the assistor must be provided on the application. Also, you must sign and date the application for it to be valid and processed. No person who is a candidate in the election for which the voter requests an absentee ballot may provide any assistance in the completion of the ballot or may serve as an authorized messenger. No civilian absentee ballot will be furnished or forwarded to any applicant unless request therefore is received not less than 7 days prior to the election, and contains the foregoing information.

Voters who are permanently and totally disabled, and any other voters who wish to vote only by absentee ballot in a general election, and who state that on their request shall, after their initial request and without further action on their part, be forwarded an absentee ballot application by the county clerk for future elections in which they are eligible to vote and until the voter requests that he or she no longer be sent an application. Permanently and totally disabled voters also have the option of indicating on their absentee ballot applications that they would prefer to receive absentee ballots for each election that takes place during the remainder of this calendar year. Permanently and totally disabled voters who exercise this option will be furnished with absentee ballots for each election that takes place during the remainder of this calendar year, without further action on their part.

Application forms may be obtained by applying to the undersigned either in writing or by telephone, or the application form provided below may be completed and forwarded to the undersigned.

DATE: February 29, 2008

ELAINE M. FLYNN
MIDDLESEX COUNTY CLERK
P.O. BOX 1110
NEW BRUNSWICK, N.J. 08903
(732) 745-4463
TDD(732)745-5553

A PERSON WITH A DISABILITY HAS THE RIGHT TO VOTE BY ABSENTEE BALLOT OR TO BE ASSISTED AT THE POLLS BY TWO ELECTION CLERKS, ONE FROM EACH PARTY, OR BY A PERSON CHOSEN BY THE VOTER OTHER THAN THE VOTER'S EMPLOYER OR AGENT OF THAT EMPLOYER, OR OFFICER OR AGENT OF THE VOTER'S UNION. VOTING LOCATIONS MUST BE ACCESSIBLE AND ACCESSIBLE PARKING WITH PROPER SIGNAGE MUST BE PROVIDED. DEAF AND HEARING IMPAIRED VOTERS CAN ACCESS THE FOLLOWING TDD NUMBER (732) 937-8364. INSTRUCTIONS PRINTED IN LARGE TYPE MUST BE CONSPICUOUSLY DISPLAYED AT EACH PERMANENT REGISTRATION FACILITY AND POLLING PLACE. VIOLATIONS OF THE ABOVE SHOULD BE ADDRESSED TO THE MIDDLESEX COUNTY BOARD OF ELECTIONS: (732)745-3471.

OFFICE USE ONLY				
VOTER NUMBER	PARTY	WARD	DISTRICT	BALLOT NO.

CIVILIAN ABSENTEE BALLOT APPLICATION

PRINT OR TYPE NAME _____ DATE OF BIRTH _____

STREET ADDRESS OR RD# _____

MUNICIPALITY _____ ZIP CODE _____ PHONE _____

I hereby apply for an absentee ballot for the (check one):

- ☐ Primary ☐ General ☐ Municipal ☐ School ☐ Special
☐ Other _____ to be held on _____ (date)

ABSENTEE VOTER OPTIONS (Check any of the following that apply to you)

- A. ☐ I am permanently and totally disabled and wish to receive an absentee ballot for all elections to be held during the remainder of the calendar year.
B. ☐ I am not permanently and totally disabled, but wish to vote only by absentee ballot in a general election. If you check off this box, you will automatically be sent an absentee ballot application for any general election until you request otherwise.

Mail my ballot to the following address (if different from above):

STREET ADDRESS _____

MUNICIPALITY _____ STATE _____ ZIP CODE _____

Sign your name as it appears in poll book

TODAY'S DATE _____

Any person providing assistance to voter in completing this application must provide:

NAME (TYPE OR PRINT) _____

STREET ADDRESS _____

MUNICIPALITY _____ STATE _____ ZIP CODE _____

SIGNATURE OF ASSISTOR _____ DATE _____

*NO CANDIDATE IN THE ELECTION FOR WHICH THE VOTER IS REQUESTING AN ABSENTEE BALLOT CAN BE AN AUTHORIZED MESSENGER.

ONLY if sick or confined, voter may apply for an absentee ballot by *Authorized Messenger. Messenger shall be a family member or a registered voter of this County.

I designate _____ (Name of Messenger) to be my authorized messenger.

(Signature of Voter)

Authorized Messenger must sign application and show photo ID in the presence of the County Clerk or County Clerk designee. "I do hereby certify that I will deliver the absentee ballot directly to the voter and no other person, under penalty of law".

SIGNATURE OF MESSENGER _____

STREET ADDRESS _____

MUNICIPALITY _____ STATE _____ ZIP CODE _____

NJDCE-4v-7.18.07

\$350.40

February 29, 2008



36 Participate in Cub Scout Pack 207 Pinewood Derby

Cub Scout Pack 207 held their annual Pinewood Derby race at Franklin School on February 15. The race was a huge success and the kids had a ball making and racing their cars. The night started with a buffet dinner made by Assistant Cubmaster Joe McGeehan, followed by the race on the pack's state-of-the-art electronic 42-foot aluminum track. In all, 36 scouts participated and received trophies. Cubmaster Tom Berry would like to thank all the parents who volunteered their time to help make the race a great success. Pack 207 will be hosting the Raritan Valley District Pinewood Derby Championship race at the PAL on Saturday, March 15. All local packs are encouraged to participate in the upcoming races.

BUSINESS/PROFESSIONAL/SERVICES

AUTO BODY

R&C AUTO BODY
Family Owned & Operated Since 1962
Expert Color Match • COLLISION SPECIALISTS
24 Hour Towing
Lifetime Repair Warranty
Lic. No. 00992A
908-757-1933
3330 Park Ave., South Plainfield

SULLIVAN'S AUTO BODY

BodyShop Lic. #02313A
2210 Hamilton Blvd.
South Plainfield
New Jersey 07080
Hours Mon-Fri 8am-5pm
908-757-5100
Fax: 908-757-3105

BUILDERS

A Cut Above the Rest
NEW CUSTOM HOMES
• ADDITIONS
• ADD A LEVEL
• HOME IMPROVEMENTS
WILL DEMO EXISTING HOME
Diamond Custom Builders
(732) 745-3752

CONSTRUCTION

Looking For An Honest CONTRACTOR
Second Levels • Additions • Kitchens
Windows • Siding • Decks
732-381-6802
www.doveconst.com
Full Guarantee • Fully Insured
DOVE CONSTRUCTION
Over 35 Years Experience

GENERAL CONTRACTORS

BUILDER & GENERAL CONTRACTOR
NJ DCA LIC #019771
Since 1981
Lordina Builders
908-753-3850
ADDITIONS • KITCHENS
BATHROOMS
Office Renovations
FREE ESTIMATES

LANDSCAPE CONTRACTORS

Lalaria Landscaping
LANDSCAPING
Leslie Chambers
Telephone: (908) 977-1668
Fax: (908) 757-5775
Fully Insured
Affordable and Reliable!

Silver Creek Landscaping
SOUTH PLAINFIELD
BRICK PAVERS • PATIOS & WALKS
• LANDSCAPE PLANTINGS
• HYDRO SEEDING & SOD
• MULCH / STONE / TOPSOIL
• VINYL FENCES & PONDS
• RETAINING WALLS
RESIDENTIAL & COMMERCIAL
- FREE ESTIMATES -
908-756-7272

kbulleta
Property Maintenance, LLC
Landscape Design • Lawn Service
Snow Plowing • Top Soil
Clean-Ups • Mulch
Guaranteed Service
Exceptional Work
Attention to detail
100% reliability
732.558.0356

PERSONAL TRAINER

THE BODY YOU WANT
Certified Personal Trainer • Personalized Programs
For All Ages • Weight Gain / Weight Loss
Sports Specific Training • Cardiovascular Training
AFPA Certified
BODY FIT PERSONAL TRAINING
Ask About Our Discounted Rate
Fully Insured For On & Off Site Training
Call for a Free Consultation
Gary Muccigrossi
908-754-8492

PAVING/MASONRY

MARK! DiFRANCESCO
PAVING • MASONRY
Free Estimates
Driveways • Parking Lots • Seal Coating • Steps • Walkways • Patios
Retaining Walls • Pavers • Wallstone • Slate • Bluestone • Excavating
Foundations • Block Work • Cultured Stone • Drainage • Waterproofing
3RD GENERATION IN BUSINESS
908-668-8434

Assm. Diegnan Named Rep to Conference of State Legislatures

Speaker Joseph J. Roberts Jr. has announced the appointment of Assemblyman Patrick J. Diegnan, Jr., (D)-18th District) to the National Conference of State Legislatures Standing Committee on Education and the Standing Committee on Redistricting and Elections.

In making these appointments, Speaker Roberts said, "These committees work to explore the issues that states have to deal with in a setting that allows its members to benefit from the experiences of other states in shaping public policy, experimenting with new law and managing the legislative institutions. Assemblyman Diegnan is an excellent fit for these appointments and I thank him for his dedication to our state and his commitment to public service."

What you're looking for...
IT'S IN THE CLASSIFIEDS

HELP WANTED

HAIRSTYLIST WITH FOLLOWING & P/T manicurist for upscale salon in Scotch Plains. Call (908) 322-8666 and ask for Jackie or Donna.

MERCHANDISING TEAM LEADER for retail garden centers in Plainfield area. Must have clean license. 2 yrs retail or supervisory exp. preferred. F/T seasonal March to Oct. (631) 745-5834.

MERCHANDISERS F/T & P/T Seasonal March to Oct. Garden center or retail exp. preferred. Flexible schedule-weekends & nights avail. (631) 745-5834.

NURSES/LPNs, RNs, CHHA-IMMEDIATE opening. F/T, P/T, per diem. Retirees/new nurses welcome. Will train for cases. Mercer, Middlesex & other areas. (732) 246-8905.

PART-TIME CLERICAL-BETTA-WAY Traffic Systems, a national transportation/logistics company located in South Plainfield is seeking part-time clerical help for days (duties to include data entry, filing, telephone and customer service work) and night-time billers. Flexible hours. Candidates please send resume with cover letter and salary requirements to Bett-A-Way, 110 Sylvia Place, South Plainfield, NJ 07080, or fax to (908) 222-2540.

RECEPTIONIST WANTED FT- Edison-Metuchen Law Firm: Responsible, serious minded person wanted for answering telephones; filing; light secretarial work-data entry. Also P/T exp. legal secretary for dictaphone work 1-2 eves. per wk. Please mail resume to P.O. Box 113, Metuchen, NJ 08840; pay comparable to experience.

HOME FURNISHINGS FOR SALE
BED-\$150 QUEEN PILLOW TOP mattress, brand new in plastic. (732) 259-0016.

MATTRESS-VISCO MEMORY FOAM new in sealed plastic with warranty. List \$1295 sell. Full \$375, Queen \$489. Call (732) 259-6690.

BEDROOM-BEAUTIFUL CHERRY sleigh bed, dresser/mirror, n/stand. List \$2500 sell \$975. (732) 259-0016.

MATTRESS- TWIN OR FULL SIZE plush top, new in plastic. Value \$400 sell \$200. (732) 259-6690.

HOME FOR SALE

SOUTH PLAINFIELD - 3 BDRM. 1 bath. Cape. \$299,900. Call Rose at (609) 851-6998. BetterHomesNJ.com. VRI Realty 800-660-3452.

APARTMENT FOR RENT

3 BEDROOM APARTMENT \$1450/MO. Call (908) 922-2368. Owner is NJREA.

BUSINESS OPPORTUNITY

GREAT HOME-BUSINESS OPPORTUNITY. Get Paid to Shop! www.catchthewavempm.com

CAR SERVICE

JERSEY ELITE CAR SERVICE New Lincolns. Airport. NYC. Corporate. Local. (908) 922-6555.

CLEANING/GARDENING SERVICES

PAZZAZE HOME OFFICE CLEANING & Gardening Services-We'll make your home sparkle & beautify your landscape. Call today for free estimate, Lisa (908) 499-0126 or Tracey (908) 208-0827.

HOUSE CLEANING

HOUSE CLEANING BY TERRI- \$10 a room. (732) 614-5296.

ITALIAN WOMAN WILL CLEAN your home or office. Responsible, trustworthy. Free estimates. Call Carol at (732) 752-5549.

FREE: PICK UP YOUR METAL

WE WILL HAUL AWAY FOR FREE any metal you do not want-washing machines, dryers, A/C units, lawn mowers, etc. ...ANYTHING made of metal that you have laying around... AT NO CHARGE. Call Tim (908) 208-2413.

RATES:

\$15/3 lines, \$1 for each additional line. **Deadline: Monday, 5 pm.** Run an ad 4 consecutive issues, get a 10% discount. Call 908-668-0010; or email your ad to: spobserver@comcast.net.

BUSINESS/PROFESSIONAL/SERVICES

CARPETING

Carpet • Area Rugs • Tile • Hardwood • Laminate • Linoleum

Commercial and Residential
Wall to Wall, Sam lays it All!

Sam the Carpet Man
MY WAY CARPET
1-877-GO-MYWAY
1-877-466-9929

Fax: 908-756-4040 119 Hamilton Blvd. mywaycarpet.com
South Plainfield, NJ 07080 mywaycarpet@msn.com

Repairs • Restretching • Binding • Custom Tile • Sanding and Refinishing

COMPUTERS

Concerned About Computer Virus Protection? Home Security?

For advice and installation, call Stan Wilkinson at
ST Computers

908-769-0709

- New Computers/Upgrades
- Hardware/Software Installations
- In Home Service
- Website Development

Cell: 732-423-3504
Visit us at www.stcomputers.org

ELECTRICAL CONTRACTOR

On Time Electrical Contractor LLC

Residential • Industrial • Commercial
No Job Too Small

908-451-3313
On Call 24 hrs.

Fully Insured & Bonded NJ
Lic #8854

BILL RITCHEY

FURNITURE REPAIR

FURNITURE MEDIC
"the prescription for damaged furniture"

Precision Furniture Repairs On-Site

Scratches • Gouges • Pet Damage
Water Marks • Burns
Structural Repairs • Broken Joints
Antique Restoration
Kitchen Cabinets Refinished
And MUCH MORE!

(908) 755-8440

GENERAL CONTRACTORS

Downes Contruction
GENERAL CONTRACTING

Additions
Cultured Stone • Pavers
Block • Brick • Concrete
Tile • Kitchens • Baths

Call Mike
(908) 756-7233

Fully Insured
Free Estimates

GUITAR LESSONS

GUITAR LESSONS

Beginner to Advanced
908-822-9702
SOUTH PLAINFIELD
All Styles

Kenny Campbell
www.kennymusician.com

HANDYMAN SERVICES

Bullseye

HANDYMAN SERVICES
NO JOB TOO BIG OR TOO SMALL

Providing All of Your Home Improvement Needs
Call Tom (908) 222-8247
or Jim (908) 208-0431

Call Today for Your Free Estimate

JUNK REMOVAL

JUNK REMOVAL
WE TAKE ANYTHING!

Any Item Removed!

A.J.'S JUNK REMOVAL
(908) 229-4831

LANDSCAPE CONTRACTORS

COMMERCIAL AND RESIDENTIAL

J. GASTER LANDSCAPING
Dependable Service
With-a-Personal-Touch

Fully Insured

SPECIALIZING IN:
Brick Paver Walkways
Brick Paver Patios & Driveways
Brick Paver Steps & Porches
Stone Walls & Retaining Walls
Complete Landscape Renovations
Installing Wood, Vinyl & Aluminum Fences
Installing Iron & Aluminum Railings
Constructing Decks

908-757-1657
JOHN GASTER

LANDSCAPE CONTRACTORS

Complete Lawn & Property Maintenance

- Design & Installation
- Computer Design Imaging
- ICPI Brick Paver Installer
- Walls, Steps, Planters
- Professional Landscape Lighting
- Bulk Delivery

732-535-0044

UNIQUE LANDSCAPE DESIGN

Fully Insured • Free Estimates

MASONRY

Luigi BOTTONE MASONRY

ALL TYPES OF MASONRY
Every Job is Owner Supervised
CALL FOR FREE ESTIMATE
732-926-8686

- Steps/Porches
- Sidewalks
- Brickwork
- Brickpavers
- Patios
- Belgian Block Curbing
- Foundations
- Driveways
- French drains
- Chimneys

PAINTING

MEHL BROS.

PAINTING & DECORATING LLC

Interior Painting, Crown Mouldings & Architectural Millwork

(908) 251-1814

Call for a Free Estimate

PLUMBER

Professional Plumbing & Heating Inc.

(908) 561-1941
South Plainfield, NJ

FRANK MCCARTHY
License #8741

POOL SALES/SERVICE

(908) 756-3120
Schedule your pool closing now!

McCarthy Contractors
Complete Pool Maintenance & Repair
Pools-Ponds-Water Features

WE SELL & INSTALL SAFETY COVERS AND DO LINER CHANGES

SALES AND SERVICE
Blaise McCarthy
Member of NSPA
20 Years Experience
Fully Licensed & Insured • SOUTH PLAINFIELD

ROOFING

J.T. PENYAK ROOFING CO.

COMMERCIAL INDUSTRIAL RESIDENTIAL

908-753-4222
www.penyakroofing.com

3571 KENNEDY ROAD.
SO. PLAINFIELD, NJ 07080

SNOW REMOVAL/SALT

Call **KLK Trucking** for:
Sand/Salt Mixture, Bulk Rock Salt, Ice Control Sand

Sanding • Salting • Snowplowing
Pick up or Deliv., Mon. thru Sat

908-757-4434
265 Ryan Street
South Plainfield

TRUCK SALES

CAMBRIA, GMC
136 Talmadge Rd., Edison, NJ
1-800-899-5226 X-110

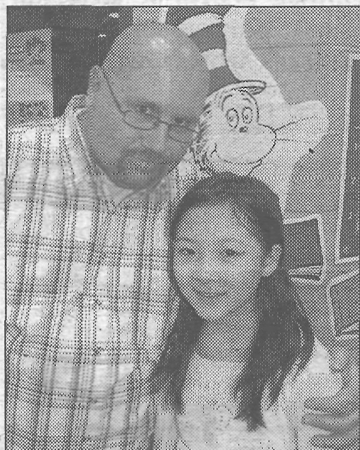
Ask for Tony
FINANCING AVAILABLE

2007 GMC C4500 PICK-UP-330 Hp Duramax diesel, auto, air, p-seat, p-icks, p-win, cruise, tilt, leather int., CD player, bedliner, loaded! Montrose Pick-Up body.

2007-08

JUNIOR JOURNALIST

Miele Kim Named Junior Journalist!



Teacher Michael Bertram with Junior Journalist winner, Mieri Kim.

Mieri Kim, Roosevelt School third grader, is this week's winner in the Hometown Heros-South Plainfield

Observer sponsored 2007-08 Junior Journalist Contest for her poem, "Winter Snowflakes."

Mieri will receive dinner for her family courtesy of Hometown Heros. She will also receive a t-shirt. At the end of the school year, she will be honored at a banquet, along with all the contest winners.

Open to all school-aged children in South Plainfield, The Junior Journalist Contest is a weekly program promoting the art of writing.

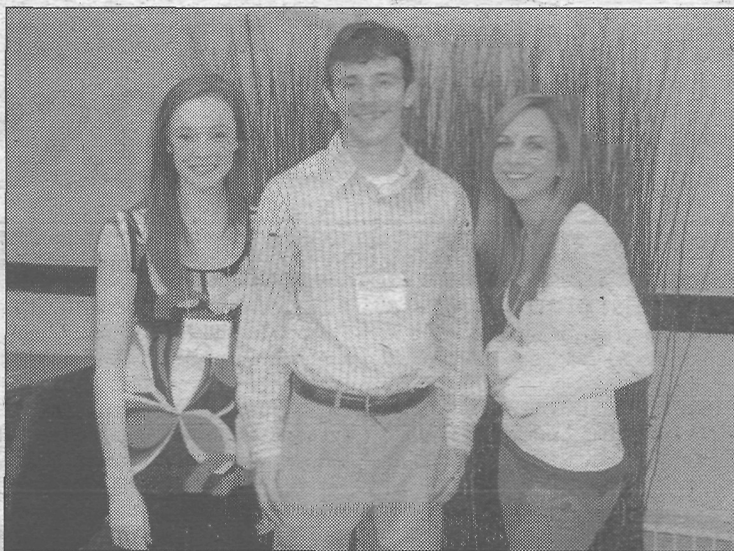
Students can submit their original poetry, articles, opinion pieces or essays to their English teachers, who will submit them to the *Observer*.

If you have any questions, call the *Observer* at (908) 668-0010, stop by Hometown Heros at 340 Hamilton Blvd. or call (908) 755-4376.

Winter Snowflakes

By Mieri Kim

Drippy, droppy snowflakes,
Falling on the trees,
Turning the green to shiny white as the branches freeze,
Snowy blowy snowflakes,
Piling on the ground,
Reach up high touch the sky there's magic all around.
Winter snowflakes decorate,
The mountains every year,
Drippy, snowy, droppy, blowy,
We love winter here!



(L to R) Kathleen Vincent, Albert Vill and Ashley Linick between workshops at the National Young Leaders Conference at Princeton University.

Middle School Students Attend National Young Leaders Conference

By Jane Dornick

South Plainfield Middle School students Kathleen Vincent, Ashley Linick and Albert Vill were nominated by their teachers to represent the school at the National Young Leaders Conference held February 7-10 at Princeton University. During their stay, they attended numerous leadership development workshops and seminars designed to enhance their distinguishable leadership qualities.

"The leadership conference in Princeton, New Jersey was an eye-opening experience for me and the other 180 'scholars' who attended," said Vill. "During our four day trip, we fine-tuned our leadership skills in several workshops that dealt with everything from active listening to responsible decision making. We were guided by our mentors through

courses that tested both our individual presentation skills and our ability to work in a group when confronted with a dilemma. I plan on using these valuable leadership qualities when working with groups in school and in my Youth Liturgy Group at Sacred Heart Church."

At the end of our conference students were presented with a question: What is leadership? Vill answered, "Leadership is whatever you make of it. A leader is not just a person who can voice their opinion and give orders, but a person who can let others give their opinion while listening intently. Anyone can lead, but only a few have what it takes to be a leader."

Principal Steve Novak said of the three, "In my eyes, you have always been a leader and you have the potential to continue to grow to help others and improve the quality of life in our society."

Federal Stimulus Package Details

The Federal Government's Stimulus Package has been approved. Most people who pay taxes or earn at least \$3,000, including through Social Security or veterans' disability benefits will get a rebate. But singles making more than \$75,000 and couples with income topping \$150,000 will get smaller checks. The top income limits are \$87,000 for individuals and \$174,000 for couples.

To get a rebate, you must file a 2007 tax return and have a valid social security number. If you already filed your 2007 return, the IRS says you do not need to do anything ex-

tra. If you are a senior who does not file a tax return anymore, you will need to file one for 2007 or you will not be entitled to receive a rebate. Checks will be mailed by the IRS so you need to file to be included.

Most taxpayers will receive a check for up to \$600 for individuals and \$1,200 for couples, with an additional \$300 for each child. People who earn too little to pay taxes but who earn at least \$3,000 will get \$300 for individuals and \$600 for couples. The rebates come in addition to any regular tax refund. Rebate checks will be mailed beginning in late spring.

From the South Plainfield Library

Bookmarks

By Jaimie Donnelly

Recently I had an epiphany and went on an intense winter cleaning of my home. I now can actually walk into my closet; however, my living room was filled with large garbage bags of unwanted things. I ended up donating a large part of the items to various charities, while keeping some to sell online. Selling online is win/win for both parties. The seller is able to offer the item to an extensive list of buyers, while the buyer is able to obtain items that used to be difficult to find. Selling online can be fun and fairly easy once you get the hang of it, but it is crucial to do some reading up before jumping in. The library can help you save money and time with our several dozen books on this topic.

The most popular online selling site is of course Ebay.com. The library has many books dedicated to just learning how to positively sell on the Web site. I recommend checking out "Don't Get Burned on Ebay" by Shauna Wright, "Ebay for Dummies" by Marsha Collier or "Ebay Business the Smart Way" by Joseph Sinclair.

Other sites such as Sell.com, Ioffer.com, Etsy.com and even Amazon.com provide sellers with plenty of options to sell everything from DVDs to original crafts. The library also has plenty of books all about general online selling. I recommend "Crafter's Internet Online" by Genevieve Crabe, "Buying and Selling Online" by John Watson and "The For Sale By Owner Kit" by Robert Irwin.

Our regular children's story time with Miss Linda and Miss Mija is scheduled for the upcoming week. For children ages three and older, join us for storytime and crafts on Tuesday, 10:30 a.m., Wednesday 6:30 p.m., and Thursday 1:15 p.m. For 2's and 3's, join us on Wednesday and Thursday at 10:30 a.m. For babies, join us for Books & Babies at 10:30 a.m. As usual there is no registration and programs are free.

For further information, check out the Web site: www.southplainfield.lib.nj.us/.

Traffic • Taxes • Elections
Sports • Schools • BOE
Cornell-Dubilier
Council Meetings

What Matters to You?

Subscribe to the Observer!
908.668.0010

South Plainfield's number one news source...
Your Hometown Paper
Count on the *Observer* to continue to provide coverage of your town, exclusively, every Friday!
For subscription and advertising information, call 908-668-0010.
South Plainfield Observer
Your #1 Source for South Plainfield News
www.spsobserver.com • email@gann@aol.com

BUSINESS/PROFESSIONAL/SERVICES

Charles L. Decker Jr.
SALES ASSOCIATE

732-469-1516 x 378
Fax 732-469-1506 Cell
908-902-9406

CharlesDecker@
PruNewJersey.com

1996 Washington
Valley Road
P.O. Box 305
Martinsville, NJ 08836



Charles L. Decker Jr.



Tim Curran

Tim Curran
SALES ASSOCIATE

732-494-7677 x 345
Cell 908-244-3228

TimSellsJersey.com

3 Amboy Avenue
Metuchen, NJ 08840

Prepare to
Experience Full
Service Real
Estate Like
Never Before.



Prudential
New Jersey Properties

An independently owned and operated member of Prudential Real Estate Affiliates, Inc.

COMPLY WITH CLIENT AND COMMUNITY TRUCK
DON'T MAKE A MOVE
Century 21
Moretti Realty
Office: 908.755.5300 x 304
Fax: 908.755.5052 Cell 732.742.8380
PfeiferM@MorettiRealty.com
www.MikePfeifer.com
MIKE PFEIFER
Don't Make a Move Without Me! 225 Maple Ave., So. Plainfield, NJ 07080

Prudential

Rose REALTORS®
Rose Marie Pelton
REALTOR-ASSOCIATE

South Plainfield Resident
For Over 39 Years

908-753-4450 X302
Toll Free 800 370-2424
Fax 908-753-0136
RosePelton@att.net



Rose Marie Pelton

Prudential Rose REALTORS®
659 Mountain Boulevard, Watchung, NJ 07069

Century 21
Moretti Realty
Experience Isn't Expensive,
It's Priceless.
THE LACERDA TEAM
Andrea Lacerda, Jesse Lacerda
Sue Espin, Michele Leavy
www.LacerdaTeam.com



**The Lacerda Team at
Century 21 Moretti Realty**
South Plainfield's Premier Real Estate Team

225 Maple Ave., South Plainfield, NJ 07080

"I'm Back!"
All Towne REALTY
Joseph DeSimone
Office: 732-381-1190 ext. 329
Cell: 908-229-9596 • Fax: 732-381-1196
alltownerealty.com
67 Westfield Ave. • Clark, NJ 07066
429 Lake Ave. • Colonia, NJ 07067
Realtor-Associate
joesdesimone59@msn.com

Century 21
Moretti Realty
Put your trust in a Realtor
who can get the most
money through
knowledge & experience!
Over 28 years
experience in
South Plainfield
& vicinity
Office: (908) 755-5051 Ext. 313
(908) 753-1346 Evenings
Email: sherwoode@morettiirealty.com



Evelyn Sherwood
Broker-Associate

225 Maple Ave., South Plainfield

Thinking of selling or buying? Why not call one of these local realtors to provide their expertise?