

The South Plainfield Board of Education will hold a public meeting with members of the Borough Council on Monday, May 8 at 6:30 p.m. to discuss the school budget that was rejected by the voters. The public is invited to attend the meeting and will be able to speak. The meeting will take place in the Roosevelt Administration Bldg. gymnasium on Jackson Ave.

# South Plainfield Observer

VOL. 9, NO. 35

50 CENTS

MAY 5, 2006



Local historian and former South Plainfield Historical Society President Larry Randolph cuts the ribbon at the opening of the the society's new home.

## A Place to Call Home Historical Society Opens New Site

The South Plainfield Historical Society held their official ribbon cutting ceremony last Wednesday at their new home in the Roosevelt Administration Building. The ribbon was officially cut by Larry Randolph, a local historian and former president of the society, in front of a crowd of more than 30 dignitaries, residents and friends.

For many years, South Plainfield historical memorabilia has been stored in homes, basements and garages all over town. However, with the opening of their new home in the Roosevelt Administration Building, and with the hard work of Dorothy Miele and the members of the Historical Society, they have finally found a place to call home.

The center houses a large collection of photographs, oral histories, displays, vintage clothing, scrapbooks, newspapers and artifacts collected since the society's incorporation in 1977. The headquarters will also be used for monthly membership meetings and special events. The room at the old Roosevelt School ends a long struggle to centralize the non-profit organization's collections which were being stored in the high school and homes of members. One artifact, a pot belly stove, which warmed the switchmen on the Lehigh Valley Railroad, had been "temporarily" stored in the shed of local resident Tilio Capparelli, for decades. Once the move began in the first week of January, an appeal for donated furniture

was made to the membership which netted several tables and chairs, a bookcase, two glass showcases, two computer systems and a television. They are still looking to acquire a copy machine.

The History Center is located on the building's lower level with access by stairs and an elevator, a feature the first school board and first borough officials could have hardly imagined when laying the cornerstone inscribed A.D. 1928. Roosevelt was the first school built by the Borough of South Plainfield after it separated from Piscataway Township in 1926. South Plainfield inherited three schools—Grant, Willis and Columbus—but the growing population on the southside put a strain on the educational facilities. Temporary barrack-type school buildings, called "portables," were installed to handle the overflow. Residents recall the only source of water was an outside hand pump and the "boys and girls rooms" were outhouses. Once completed, Roosevelt's halls were filled with truly grateful students who now had indoor plumbing.

Residents are invited to come and look at the many items which represent South Plainfield's history. Plan to spend some time there since there is so much to see. The center is open every Tuesday from 2 to 8 p.m. Be sure to take the time to look at all the wonderful artifacts that are on display; visitors will be amazed.

## Pay to Play Ordinance Passed Bengivenga, Anesh Vote 'No'

Tuesday night's council meeting turned contentious when the ordinance regulating political contributions came up for discussion. It was apparent from the start that this was a politically motivated issue and both parties took opposite sides in arguing their case.

Councilman Charles Butrico began by proposing an amendment to add the wording "Political Municipal Committee" in three sections of the ordinance. The amendment passed unanimously.

Bob Jones, the Republican chairman in South Plainfield, was adamant

in his objections to some of the wording and donation limits in the ordinance. He argued that the amendment was weak and wouldn't change the way contributions are made.

Borough Attorney Patrick Diegman wholeheartedly disagreed with most of Jones' objections. He said the amendment is strong, in most cases stronger than some in neighboring towns. Diegman read several sections of the ordinance out loud to explain why Jones was wrong with some of his interpretations.

Butrico, who is running for mayor this year, challenged Jones to make

this year's election even more open to the public by listing every donation over \$1 on each party's website. "Let's make it all open to public," said Butrico. Jones did not reply.

When Butrico later asked Councilman Rob Bengivenga, Republican candidate for mayor, about disclosing all of their political donations, no matter how small, Bengivenga agreed to the challenge.

After much heated debate between Mayor Gallagher, Butrico, Jones and Diegman, the council voted 3-2 to pass the ordinance. Both Republicans voted "no" without further comment.

## SPHS Names Students of the Month

South Plainfield High School has named Samantha Deffler and Benny David "April Students of the Month."

Samantha Deffler lives at home with her parents and two siblings. She is currently enrolled in four advanced placement courses at South Plainfield High School and has also been an active student in the journalism program for the last four years. Ranked first in her class, Samantha will be attending Bucknell University in the fall and plans to major in biology. She hopes to go on to study genetics. Samantha has organized several functions for the National Honor Society, of which she is secretary of her school's chapter, including a food drive for families in her community and trips to the local elementary schools. Outside of school, she has volunteered for the past five years as an instructor with Safety Town, and helping with the Clothesline of Middlesex County.

Benny David, a SPHS senior, resides in South Plainfield with his father and

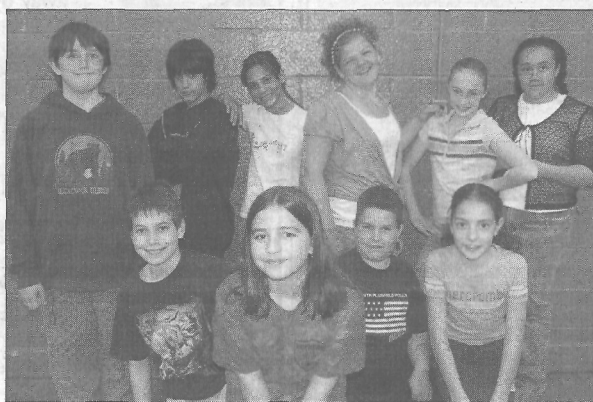


SPHS students of the month, Samantha Deffler and Benny David with school Principal Dr. Ken May.

stepmother. Benny will attend North Carolina A&T in the fall, majoring in accounting and minoring in business management. Benny is currently a member of the well-known Student Leadership Organization at the high school. Benny has donated a lot of his

time to helping out not only in his community, but also communities in New York and other parts of New Jersey. He has worked in food banks and soup kitchens with his grandmother and he has worked on various projects with his Student Leadership Organization.

## The Music Man, Jr. Hits Grant School



The cast of "The Music Man, Jr." rehearses for their upcoming show.

By Jane Dornick

Grant Elementary School Drama Club has been busy for months preparing for their May production of "The Music Man, Jr." Students have been working hard to bring 1912 River City,

Iowa to life on the stage.

The show tells the story of traveling salesman Harold Hill, played by James O'Connor, who comes to the town of River City in hope of starting a boys band. But Harold is not a musician and knows nothing about music.

Harold is infamous for scamming people in other towns in the Midwest, but something is different this time. Instead of taking people's money for uniforms and instruments and leaving town, Harold has a reason to stay this time—his love for Marian the librarian, played by Kathleen Vincent, and her little brother, Winthrop, played by Joshua Rochotte.

Drama Club Music Director Joan Stasio feels that what makes this show so interesting for fifth and sixth graders is the comedy and everyday themes that were prevalent in society even a 100 years ago. "When they can relate what's going on in the story to what they experience in their own lives, then it makes sense to them and they have a lot of fun with it," said Stasio. Assisting the Drama Club are teachers Sandy Acker, Liz Mazzocco and Guidance Counselor Greg Young. "The Music Man, Jr." can be seen on Wednesday, May 17 and Thursday, May 18 at 7:30 p.m. in the Grant School gym. Tickets are \$3 each. For information, call (908) 754-4620.



**CORRECTION:** In last week's issue we incorrectly stated that the BOE meetings would be changed from Wednesdays to Tuesdays. Please note that the BOE meetings will now be held on Wednesday evenings.

**MARK YOUR CALENDARS**

Log on to [southplainfieldnj.com](http://southplainfieldnj.com) for the latest meeting agenda

- councilmeetings**  
Meets twice a month on the first and third Tuesday  
Borough Hall Council Chambers • Questions? 908-226-7605
- Date**                      **Agenda Meeting**                      **Public Meeting**  
May 16 ..... 7:00 p.m. ..... 8:00 p.m.  
June 6 ..... 7:00 p.m. ..... 8:00 p.m.  
All meetings of the Governing Body are held in accordance with New Jersey Open Public Meetings Act (N.J.S.A. 10:4-6 et seq) in the Council Chambers at 2480 Plainfield Avenue.
- planningboard**  
Meets second and fourth Tuesday of the month, \*except where noted.  
Borough Hall Council Chambers, 7 p.m. • Questions? 908-226-7641  
May 9, May 23, June 13, June 27, July 18\*, Aug. 15\*, Aug. 29\*  
Sept. 12, Sept. 26, Oct. 10, Oct. 24, Nov. 28, Dec. 12 and Dec. 26.
- zoningboardofadjustment**  
Meets second and fourth Thursday of the month, \*except where noted.  
Borough Hall Council Chambers, 8 p.m. • Questions? 908-226-7641  
May 11, May 25, June 8, June 22, July 13, July 27, Aug. 10, Aug. 24, Sept. 14, Sept. 28, Oct. 12, Oct. 26, Nov. 30\* and Dec. 14.
- boardofeducationmeetings**  
Roosevelt Administration Gymnasium on Jackson Ave. unless otherwise noted  
Committee of the Whole, Wednesdays 7 p.m.-June 14, July 12, Aug. 9, Sept. 13, Oct. 11, Nov. 8, Dec. 13, Jan. 10, Feb. 14, March 14 and March 28.  
Regular Meeting Wednesdays 8 p.m.-May 10, June 21, July 19, Aug. 16, Sept. 20, Oct. 18, Nov. 15, Dec. 20, Jan. 17, Feb. 21, March and April 4.
- taxpayersadvisorygroup**  
The Taxpayers Advisory Group (TAG) meets the fourth Tuesday of every month at Borough Hall, 2480 Plainfield Ave. at 7 p.m. Questions? 908-769-0786.
- siteplansub-committee**  
Meets once a month on the third Tuesday of the month, 8 p.m.  
May 16, June 20, July 18, August 15  
Sept. 19, Oct. 17, Nov. 21 and Dec. 19.
- recreationcommission**  
Meets once a month on the second Tuesday of the month, except July and August  
PAL Building, Maple Ave. 7 p.m. • Questions? 908-226-7716  
May 9, June 13, (No meetings July and Aug.) Sept. 12, Oct. 10, Nov. 14 and Dec. 12  
No scheduled meetings, Sept. 12, Oct. 10, Nov. 14 and Dec. 12.
- environmentalcommission**  
Meets once a month (second Wednesday)  
Borough Hall Conference Room, 8 p.m. • Questions? 908-226-7621  
May 10, June 14, July 12, Aug. 9, Sept. 13  
Oct. 11, Nov. 8, Dec. 13 and Jan. 10.
- businessadvisorygroup**  
Meets once a month (first Wednesday)  
Borough Hall Council Chambers, 5 p.m. • Questions? 908-757-8100
- trafficsafetyadvisorycommission**  
Meets once a month (fourth Wednesday) at 7 p.m.  
in the Conference Room, Borough Hall (No Meeting in August)
- boardofeducationcurriculum/technology meetings**  
Meets once a month on Mondays at 8 p.m. in the 2nd floor conference room at Roosevelt Administration Building on Jackson Ave.



The South Plainfield Observer is published every Friday

G&G Graphics, Inc.  
1110 Hamilton Blvd. Suite 1B  
South Plainfield, NJ 07080  
(908) 668-0010 • FAX (908) 668-8819

NANCY GRENNIER  
Publisher/Editor-in-Chief

Web page:  
[www.sposerver.com](http://www.sposerver.com)  
(under construction)

For subscriptions, advertising or information, call (908) 668-0010.

The publisher is not responsible for typographical errors.

WAYNE GRENNIER  
Associate Publisher

SUSAN KANEPS  
Art Director/Associate Editor

PATRICIA ABBOTT  
Staff Writer/Photographer

LIBBY BARKSY  
Staff Writer

CAROL GRENNIER  
Editorial Assistant

JEAN FULTZ  
NATIA KATSANTONIS  
TARYN BILICH  
Production Assistants

ROXANNE CORTESE  
JANE DORNICK  
WILLIAM TUTHILL  
Advertising Sales

The South Plainfield Observer (U.S.P.S. 018253) is published weekly, except Thanksgiving week, by G&G Graphics Inc. 1110 Hamilton Blvd. Suite 1B, South Plainfield, NJ 07080-2004. Second class postage paid at South Plainfield, New Jersey 07080-9998. POSTMASTER: Forward change of address orders to G&G Graphics Inc. 1110 Hamilton Blvd. Suite 1B, South Plainfield, NJ 07080-2004. Subscription rates \$25 per year in South Plainfield; \$30 per year out of town. To subscribe: 908-668-0010.

**SUBMIT YOUR ARTICLES**

We look forward to hearing from all of you and encourage you to send in your stories and photos. The South Plainfield Observer is your paper. Please let us know what you would like to see in it.

To get an article published in the South Plainfield Observer:

1. Type (double spaced) the article you wish published.
2. Mail, fax or drop it at: South Plainfield Observer, Editorial Department, 1110 Hamilton Blvd., Suite 1B, South Plainfield, NJ 07080 or drop it in the box at Mohn's Flowers on Plainfield Ave., fax us at (908) 668-8819 or e-mail us at [sposerver@comcast.net](mailto:sposerver@comcast.net). Include your name, address, telephone number.

**LETTERS TO THE EDITOR**

Letters may be submitted by mail to South Plainfield Observer, Editorial Dept., 1110 Hamilton Blvd. Suite 1B, South Plainfield, NJ 07080, by email: [sposerver@comcast.net](mailto:sposerver@comcast.net) or fax 908-668-8819. Letters should not exceed 200 words. We reserve the right to edit for clarity or length. It is the editor's discretion to limit the number of letters submitted by one individual on the same subject. The opinions expressed in "Letters" do not necessarily reflect the opinion of the Observer. All letters must be submitted with name and phone number, for verification.

## IN YOUR OPINION

**Dear Editor:**

It has been with great sadness and extreme mortification that, we, the students of South Plainfield High School have, along with you, observed the shocking violence and subsequent arrests on our school premises in recent days. We wish to make it known to you and your readers that this student body unequivocally condemns all external and any possible internal forces that agitated the violence of April 24 that has since become a source of great ignominy to our community and ourselves.

Furthermore, we hope that even in the midst of recent misfortune, our community would remain mindful of recent achievements at the high school for which all South Plainfield residents can be proud. These include the Tiger 24, a 24 hour walk-a-thon fueled by the dedication of SPHS students for the benefit of local charities; Cultural Heritage Day, an event seeking to promote knowledge and tolerance for and among the many diverse groups that make up the tapestry of this community and the Holocaust Museum, an effort to educate our community on the horrors of the past in order to encourage actions against the horrors of the present, culminating in the formation of the SPHS chapter of the Help Darfur Now organization.

Even in the face of recent events, it should be clear to every resident that South Plainfield has a lot of which to be. While this high school remains dedicated to driving out any similar remaining forces or mindsets that led up to the violence of the 24th, we also remain dedicated to continuing the tradition of South Plainfield excellence that has in recent months been on full display. It is our sincere hope that members of the community will not allow a single day of depravity to overshadow a school year so filled with achievement.

**RESPECTFULLY,  
TONY JOE, SENIOR, ON BEHALF  
OF THE SOUTH PLAINFIELD HIGH  
SCHOOL STUDENT BODY**

**Dear Editor:**

It takes a village to transform the youth!

Today's (April 26) *Courier News* front headline was the story about what happened here at South Plainfield High School on Monday. I could not believe my eyes when I was reading the story. I could not be silent. As a parent, I admire some of the things the school does to maintain order and discipline. Some of the literature that

comes to parents for signatures are very good.

The school is doing what it can to keep the system as a true educational institution where students come in a safe environment and commit themselves to learning science, math, social studies and English. Another goal of education is character building. That's what was challenged here on Monday.

But there is a limit to what schools can do. Schools cannot convert troubled children into persons of character. Character building takes place at home, school and the social community. Schools should not be singled out in the business of transforming children, while homes and the social community behave irresponsibly. Social community includes churches, borough leaders, state and other social forums. Respect for parents, teachers, pastors and community leaders and listening to what they say needs to be key in character building. Role models are also key in this.

I appreciate what the Borough did a few months ago to educate us about Internet use by youngsters. I cancelled my Bible study event to send parents to attend that program. This is the kind of leadership we need to give to parents and children. On behalf of the South Plainfield Association of Churches, I pledge the support of the clergy for any concerted effort to bring parents, teachers, community leaders and clergy together to brainstorm: (A) what is the ideal community South Plainfield can be, (B) the role of parents, teachers and the churches to build that ideal community, and (C) how can the community use the home, church and school to the task of character building of the youth of this community.

I ask the Mayor to call for a town meeting of all segments of the South Plainfield community to come to-

**Submit Letters to the Editor:**

**Please be advised that the Observer will no longer publish anonymous letters. Any letter received without identification will be discarded.**

Letters may be submitted to the Observer, 1110 Hamilton Blvd. Suite 1B, South Plainfield, NJ 07080, or fax 908-668-8819 or by email: [sposerver@comcast.net](mailto:sposerver@comcast.net). **Deadline is Monday, 5 p.m.** Letters must be accompanied by a name and telephone number for verification. Please limit letters to no more than 200 words. We reserve the right to refuse a letter, to edit for clarity or length, and to limit the number of letters submitted on the same subject.

gether and talk about this beloved community we live in.

**REV. DR. NEHEMIAH THOMPSON  
PASTOR, WESLEY CHURCH**

**To the Editor:**

On Sunday, April 30, I attended a marathon run for The Leukemia and Lymphoma Society. That day not only changed my life, but also made me so proud of two people that I feel should be acknowledged for participating in the 26.2 mile race. Kevin Hajduk and Angela Raimondo not only ran that Sunday morning for the Team in Training but raised \$3,600 for the event. The courage and stamina of the people running on Sunday morning was like nothing I have ever encountered. It was an amazing day and words cannot express how I felt when individual after individual crossed the finish line tired and sore, but each with their own story of why it was so important for them to run, but more important to finish. I know that a cure for this disease will be found someday due to dedicated people who believe that together nothing is impossible. You are truly my heroes guys.

**THANK YOU,  
PATRICIA HAJDUK (AKA MOM)**

### South Plainfield Recreation Offering 2006 Discount Ticket Prices

	Gate Price	Our Price
Sesame Place (all ages) .....	\$45.26	\$37.00
Mountain Creek (adult) .....	27.99	21.00
Hershey Park (adult) .....	41.95	34.95
Hershey Park Jr./Sr. (ages 3-8; 55-69) .....	24.95	23.05
Great Adventure (adult) .....	59.99	31.00
includes safari, 49" and over		
Hurricane Harbor (adult) .....	32.99	28.00
Dorney Park (adult) .....	36.95	31.50
Philadelphia Zoo (adult & child) .....	16.95	12.50

Tickets may be purchased at the recreation office in the PAL building on Maple Ave. Office hours are Monday-Friday, 8:30 a.m.-5 p.m. and 6-8 p.m. on the first and third Monday of each month. For more information or to check on availability, please call (908) 227-7713 during office hours.

### Think pink for Mom. Teleflora's Beautiful Mom Bouquet by Galway



**\$45<sup>00</sup>**  
plus delivery

She'll love the pink roses. She'll be absolutely swept away by the pink Galway Irish Crystal vase, so delicately etched with tiny flowers. If you're not already her favorite, you will be. For nationwide same-day delivery, call or visit our shop.

### Give Mom butterflies. Teleflora's Dancing Butterflies Bouquet

Make Mom's gift of flowers even more special this year. Send them in a triangular pink vase, decorated with translucent butterflies. She'll love this charming contemporary collectible and use it all year. For nationwide same-day delivery, call or visit our shop.



**\$99<sup>95</sup>**  
plus delivery

**Mother's Day is Sunday, May 14**

**Mohn's Flowers & Fancy Foods**  
2325 Plainfield Ave. South Plainfield  
(908) 561-2808  
[www.mohnsflorist.com](http://www.mohnsflorist.com)

© 2006 Teleflora

**teleflora®**





Grand Knight Joe Scrudato (right), Ed Kubala and Frank Mikorski with Father John in his new wheelchair.

## Knights of Columbus Donate Wheelchair to Fr. John Skwara

On April 10, Grand Knight Joe Scrudato from the South Plainfield Knights of Columbus Council #6203, along with Knights member Ed Kubala and OLC Church parishioner Frank Mikorski, paid a visit to former Pastor Father John Skwara of Our Lady of Czestochowa Church, at the Assisted Living home in Somerset where he resides.

After learning from Ed Kubala and Frank Mikorski that 4th degree member Father John was in dire need of a new wheelchair because of the daily wear and tear, the South Plainfield

Knights of Columbus took it upon themselves to meet his need.

With the help of District Deputy Andrew Halkovich, a loaner wheelchair was given to Father John until the South Plainfield Council can purchase him one of his own.

After presenting Father John with his new wheelchair, Joe, Ed and Frank visited with him to reminisce about old times at Our Lady of Czestochowa Church.

Father John expressed his gratitude for the support and help given to him from the South Plainfield Knights.

## Bear Rock Cafe Grand Opening Set for May 8

Bear Rock Cafe, a popular neighborhood restaurant and gathering place, will celebrate its grand opening in South Plainfield's Hadley Shopping Center on Monday, May 8. The 3,000 square foot Bear Rock Cafe, owned and operated by Andria Lykogiannis of Lykos, LLC, is located in the Hadley Shopping Center on the Piscataway border at Stelton and Hadley roads (just south of exit 5 on 287) in South Plainfield.

"We are thrilled to bring Bear Rock Cafe to South Plainfield at the newly expanded Hadley Shopping Center," said Lykogiannis. "The buzz surrounding the news is that the community appears to be truly excited about Bear Rock Cafe coming to the area. We've heard from many that they are looking forward to having a Bear Rock Cafe conveniently located to where they live, shop and work. The time has come in New Jersey to escape to a higher taste with Bear Rock Cafe."

The new Bear Rock Cafe has a mountain cafe-style decor, with a stone hearth and fireplace, to create a casual, comfortable and friendly at-

mosphere. This gathering place for the community will also provide free Wi-Fi access in a computer friendly environment.

Bear Rock Cafe is a quick-casual restaurant with an upscale mountain lodge cafe atmosphere, featuring a wide variety of fresh, hand-crafted sandwiches, garden fresh salads, oven fresh breads, hot and savory soups, baked potatoes and a full assortment of gourmet desserts. The Bear Rock Cafe menu also includes an organic bread made with organic flour, all-natural ingredients and no preservatives, along with healthy trends low carb and low fat menu items, vegetarian options, a create-your-own sandwich option and an award winning kid's menu, including a create-your-own 1/2 sandwich. Bear Rock Cafe will be serving breakfast, lunch and dinner.

For those seeking a wide selection of menu items geared towards feeding larger groups, Bear Rock Cafe is well-known for catering trays and boxed lunches for office or home. For more information, contact Michael Donahue, general manager at (908) 756-7770.

Throughout grand opening week, Bear Rock Cafe will proudly partner with Lainie's Angels, a charitable organization based out of Edison dedicated to supporting families of children with cancer and blood disorders. Right now there are 50,000 families in the U.S. with a child who has cancer or a blood disorder. Lainie's Angels primary task is to put a network of healthcare staff, counselors and peer support in place for these families that will serve to educate them, help them understand complex medical information and offer ongoing guidance and support. To learn more about Lainie's Angels go to [www.lainiesangels.org](http://www.lainiesangels.org).

## Future of Skate Park Undecided

By Jane Dornick

More than 25 skateboard fanatics and parents attended the April Recreation Commission meeting to voice their opinions on the surprise demise of the skate park which was located behind Borough Hall. In March the skate park equipment was transported to the DPW facility until a more appropriate location for a park is found.

Recently retired Recreation Director Mike English was on hand and reaffirmed the fact that he had sent 145 letters to registered skate park users and to the *Observer* last June, explaining the numerous problems at the park and urged users to abide by the rules or the park might be closed. Grandparent John Burnham, whose grandson Eric is a champion skateboarder and frequented the park, stated, "I never received a letter and I would have helped out the situation if I had known about it." He now takes his grandson to practice in other towns that have skate parks and gave some input on how other facilities operate.

There was much debate from parents about whether they actually received letters and they argued about the fact that the area was left unsupervised a good deal of the time. Some even suggested more of a police presence in the future, however South Plainfield PBA Local 100 President and police liaison to the commission Det. Chris Colucci said, "Be careful what you wish for." He explained how that could possibly cause more intense enforcement of negative behavior at the grounds and stressed that "parents need to tell their kids to follow the rules."

Recreation Commission President Bill Cochrane said, "We want to be absolutely sure where it goes and we'll be more cautious than the last time." He even suggested the inception of a volunteer parents group similar to the Jr. Baseball Club or Ponytail Softball.

Acting Recreation Director Kevin Hughes said that he, and Borough Councilman Ray Petronko, are looking into possible locations such as the newly refurbished Putnam Park. He stated that the new park needs to be in a highly visible area that is fenced in with a booth at the entrance that would be manned by an attendant where identification would have to be provided.

Cochrane summed up the public part of the meeting by saying, "No decision will be made tonight. We don't want to make a hasty decision. We want to see the kids off of the streets and parking lots for safety reasons."

The Recreation Commission voted to form a subcommittee headed by Commissioner Calvin Gross. The subcommittee has already held one meeting. An update on the progress is expected during next week's Recreation meeting. The meeting will be held on Tuesday, May 9 at 7 p.m. and is open to the public.

## Practical Crafting Program at Library

The South Plainfield Library will host another "Practical Crafting" program on Monday, May 8. There will be two sessions of the program, at 10:30 a.m. and 7 p.m.

Instructor Ronda Wisniewski will lead participants in a class on t-shirt painting. Students are requested to bring one washed and ironed white t-shirt to class. Space is limited; pre-registration is required. There is a \$1 materials fee, payable upon registration.

If you'd like more information, please call the library at (908) 754-7885, or visit the library's website at [www.southplainfield.lib.nj.us](http://www.southplainfield.lib.nj.us).

Deck and Patio Owners: **Outsmart the Weather!**

Now get instant shade and comfort with a SunSetter Motorized PRO Awning! You'll enjoy your deck or patio more than ever before, safe from harsh sun, harmful UV rays, and passing showers. It can be as much as 20 degrees cooler under a SunSetter Now with a built-in retractable Weatherbreaker Panel for even more protection. America's #1 best-selling awnings!

- Built-in, Retractable Weatherbreaker Panel
- Up to 20 degrees cooler under your awning!
- 5-Year Manufacturer's Limited Warranty.
- Reduces air conditioning costs.
- 99.9% UV protection
- 100% waterproof fabric
- The only awnings to earn the Good Housekeeping Seal.

**Sold and Installed Locally by:**  
**Quality Glass Inc**  
 2300 South Clinton Ave, South Plainfield  
**908-754-4855**  
 COME VISIT OUR SHOWROOM

**Sacred Heart Church**

149 South Plainfield Ave.  
South Plainfield, NJ

Rev. John Paul Alvarado, Pastor

**Sacrament of Reconciliation**  
 Saturday 10-11:30 a.m. and by appointment

**Mass Schedule:**  
 Saturday Evening Mass 5:00 p.m.  
 Sunday 8:00, 9:30, 11:30 a.m.  
 Weekdays Tues., Wed., Fri., Sat. 9 am; Mon. and Thurs. 7 p.m.  
 Monday Eve. Mass with Miraculous Medal Novena Prayers 7 p.m.  
 Holy Days 9 a.m., 12:10 p.m. and 7 p.m.

**SCOTTISH GOURMET USA WAREHOUSE SALE**

THURSDAY, FRIDAY May 4 & May 5 8am-2pm  
 SATURDAY May 6 8am-12 noon

**GOURMET GIFTS**  
**25 to 50 % Off**  
**\$2.50 to \$100**

Fudge, Shortbread, Jams, Marmalade, Oatmeal, Oatcakes, Chocolate Truffles, Whiskey Cakes, Mugs, Tea Towels, Kitchen and Decorative Serving Pieces. All imported from Scotland. Great gifts for Mothers Day!

**43 Davis Street, South Plainfield**  
**908-754-7447**  
 Off South Clinton Avenue. Turn at Miller Energy Sign. Exit 5 on 287, north on Stelton Rd, right on Hamilton Blvd past Home Depot, left on So. Clinton Ave to Davis Street on left. Proceed to back of building to warehouse door. CASH or CREDIT CARD ONLY.

**SOUTH PLAINFIELD**

**Kennedy School Area**—Split level 4 bedrooms, 1 1/2 baths. New kitchen, dining room with sliding doors leading to new deck overlooking fully fenced yard with above ground pool. Brand new bathrooms, new flooring throughout, new roof, updated furnace and central air, replacement windows and vinyl siding, full basement, one car garage with double width driveway. Conveniently located near North Edison border and shopping centers. Move right in!

Asking \$379,900. Directions: Park Avenue to Caffrey Terrace left to 3305 Brenda Place.

**Lakeland Style Ranch** completely updated throughout. Very open floor plan featuring a spacious new eat in kitchen & family room area that offers beautiful ceramic tile flooring. This home offers 3 bedrooms 2 full baths, central air, hardwood floors, replacement windows and newer roof, full basement and attached garage. Enjoy outdoor entertaining on the new 36 foot deck overlooking a fully fenced yard. There is also a gated patio area and shed. Convenient access to grammar schools and major highways. Mint condition, move right in! Asking \$449,900. Directions: Hamilton Boulevard to 164 Somerset Avenue.

**Century 21**

**Moretti Realty**  
 "The Lacerda Team"  
 225 Maple Avenue  
 South Plainfield, NJ 07080  
 (908) 755-5300 Ext. 302  
 (908) 578-1166 Cellular  
 Email: [LacerdaA@morettiirealty.com](mailto:LacerdaA@morettiirealty.com)  
 Website: [www.Lacerdateam.com](http://www.Lacerdateam.com)

**WE INVITE YOU TO VISIT OUR OPEN HOUSES FOR THESE PROPERTIES ON SUNDAY, 5/7/06 FROM 1 TO 4 P.M.**

Andrea & Jesse Lacerda  
 "The Lacerda Team"

## Vendors Sought For Grant School Vendor Night

The 2007 Stokes Committee will be hosting a vendor night on Friday, June 2 at Grant School from 5-9 p.m. Vendors are needed on a first come first serve basis. A six foot table is \$35 and each vendor is asked to donate a raffle prize valued at \$20.

For more information, please call Debbie at (908) 561-2320.



# Around Town

## Edison Valley Playhouse Presents...

May 5 through 27

Edison Valley Playhouse brings the classic *One Flew Over the Cuckoo's Nest* to the stage from May 5 until May 27. Show dates are Friday and Saturday nights at 8 p.m. and a Sunday matinee on May 14 at 3 p.m. The Mother's Day performance will have a special ticket offer—mom is free with two paid admissions. Prices are \$15 for adults and \$12 for students and seniors. For information and reservations, visit [www.evplayhouse.com](http://www.evplayhouse.com) or call (908) 755-4654.

## Woman's Club Yard Sale Rescheduled

May 6

The yard sale, sponsored by the Suburban Woman's Club, which was scheduled for April, has been rescheduled for Saturday, May 6.

The yard sale will take place at the American Legion, located at 423 Oak Tree Ave.

## Wesley Methodist Hosts Katrina Event

May 7

The Wesley volunteers for Katrina rehabilitation work in New Orleans will make a presentation to the community on May 7 at 12:15 p.m. The power point presentation will explain what happened, what is happening now and what needs to happen for all in New Orleans.

Volunteers will visit New Orleans in January of 2007 to continue their rebuilding efforts in cooperation with Drew University, Centenary College of Hackettstown and other secular agencies. Those interested and willing to join the team, or who simply want to be informed, are welcome. Refreshments will be available at noon in the Wesley Fellowship Hall on Plainfield Ave.

## Elks S.O.S. Breakfast

May 7

The South Plainfield Elks Lodge 2298, located on New Market Ave. is holding an S.O.S. Breakfast on Sunday, May 7 from 8-11 a.m. Breakfast con-

## South Plainfield SENIOR CENTER

The Senior Citizen's Center is open Monday through Friday 8:30 a.m.-5 p.m.  
NOW OPEN SATURDAYS 9:00 AM-12:30 PM

MONDAY	TUESDAY	WEDNESDAY	THURSDAY	FRIDAY
<b>UPCOMING EVENTS</b> NJ Tax Preparation Program, 10am-noon, 1-2pm) 90's Birthday Bash - May 17 * * * Overnight trip to Baltimore w/Dinner Theatre (Date Changed to September 30-October 1)				
Knitting/Crocheting 9:30-11:30am Yoga 10:30-11:30am Art Class 11:30am	8 Bingo 10am-2pm Ladies Social 10am Lunch Available	9 Exercise 8:45am Computer Class 10am, 11:30am & 1pm Line Dancing 10am Tai Chi Class 2pm	10 Shop Pathmark 9am Practical Crafts 10am Computer Class 11am & 1pm Exercise Class 1:15pm	11 Bingo 10am-2pm Lunch Available Bingo 10am-2pm
TO SIGN UP FOR MEMBERSHIP IN THE SENIOR CITIZEN'S CENTER, VISIT THE CENTER.				

Daily Events  
9-11 AM Coffee & Cake  
9 AM-4 PM Cards & Pool  
(908) 754-1047

What's happening in MAY

sonal recovery on Saturday, May 6 at the Hilton in Woodbridge from 6 to 11 p.m.

Call Linda Surks at (732) 254-3344, ext. 18.

## Breakfast at Willow Grove Church

May 6

The Men's Group of Willow Grove Presbyterian Church invites all men and women ages 16 and up to join them on Saturday, May 6 from 8:30 to 10:30 a.m. for a breakfast.

For more information or to make reservations, call the church office at (908) 232-5678.

## Bus Trip to Philly

May 6

A fun and educational bus trip to Philadelphia, Pa. sponsored by Mount Zion A.M.E. Church Lay Organization. Tours include: The African-American Museum on May 6. Contribution is \$40 per person. For more information, please call (908) 531-4029 or (908) 518-0583.

## Walk for Animals

May 7

People for Animals, a non-profit organization, is sponsoring Walk for Animals on Sunday, May 7, from 10 a.m. until 2 p.m. at Nomahegan Park in Cranford. Everyone is invited to attend this fun event, with or without a dog. There will be refreshments for dogs and humans.

For information and to register call (908) 964-6887, ext. 311.

## Walk to D'Feet ALS

May 7

The annual Woodbridge Walk to D'Feet ALS is set for May 7 at the Alvin P. Williams Memorial Park at Sewaren Peninsula. Registration at 10 a.m.; walk starts at 11 a.m.

The walk is currently seeking team captains to organize teams of walkers, collect donations, etc.

For information, call Donna Jago at (732) 502-6015.

## Middlesex East WOWs

May 8

Middlesex East Widows or Widowers business meeting is on Monday, May 8 at 7:30 p.m. at the Carerret Community Center in Carerret.

For information contact Dorothy at (732) 541-2174 or Lois at (908) 541-2174.

## Fire Dept. Concert

May 12

The South Plainfield Volunteer Fire Department has scheduled its annual benefit concert for Friday, May 12 at 8 p.m. The show will be held at the South Plainfield High School Auditorium.

Entertainment will be provided by 1960's recording group, The Vogues.

For more information, call the sales office at (908) 412-6559.

## Elks Mother's Day Breakfast

May 14

The South Plainfield Elks Lodge #2298 on New Market Ave. will hold an all you can eat Mother's Day breakfast on Sunday, May 14 from 8 a.m. to noon. Breakfast consists of eggs, bacon, pancakes, sausage, french toast, home fries, coffee, tea and juice. Cost is \$6 for adults, \$4 for children.

## VFW Dinner

May 19

VFW Memorial Post #6763, 155 Front St., will hold a dinner on Friday, May 19 from 5 to 7 p.m. The public is invited.

For additional information call (908) 668-9751 after 3 p.m. daily or after noon on weekends.

## Comedy Show at Polish Home

May 20

The Polish National Home will present a comedy show on Saturday, May 20 from 9 p.m. to 1 a.m. You are welcome to bring your own food. Cost is \$30 per person. Open bar. Call Lisa at (908) 668-9442.

## Baltimore Trip

September 30

Join us for a weekend of fun on Saturday, Sept. 30 through Sunday, Oct. 1. Trip includes: transportation, overnight accommodations at Best Western, sightseeing tour of Baltimore, dinner and show at Toby's Dinner Theatre, hot buffet breakfast on Sunday morning, time at the Inner Harbor for sightseeing, shopping and lunch. Cost is \$190 per person double occupancy, \$245 single or \$185 triple.

Make reservations as early as possible. Space is limited to 44. For information, call the Senior Center at (908) 754-1047.

## — Out of Town —

### Sierra Singles 30/40

May 5

Sierra Singles 30/40 is hosting a happy hour on Friday, May 5 from 5-7 p.m. at the Westin Hotel, Copeland Restaurant in Morristown.

Free finger foods, live music entertainment, two-for-one drink specials. RSVP required to (973) 364-7573, ext. 8.

### Hip-Hop Workshop

May 5-7

On Friday, May 5 through Sunday, May 7, the Alvin Ailey American Dance Theater will send its teaching artists to the Jersey Gardens Mall in Elizabeth for a free hip-hop dance workshop, which is open to the public. No dance experience is necessary. For information call (888) 466-5722 or visit [www.njpac.org](http://www.njpac.org).

### Blackrose to Perform

May 6

Blackrose, the band, performs classic rock 'n roll music and today's hits at Tim Kerwins Pub, Rt. 28 in Middlesex on Saturday, May 6 at 9:30 p.m. No cover charge.

### NCADD Anniversary

May 6

NCADD of Middlesex County is celebrating 25 years of preventing substance abuse and supporting per-

## Scotch Plains Music Center

The Biggest Little Music Store in New Jersey

413 Park Avenue, Scotch Plains, NJ 07076

(908) 322-7542

### HUGE SELECTION OF:

Sheet Music - Tons of it!!!!  
Music Books - You Name It, We Probably Have It  
New and Used Guitars  
Accessories for All Instruments  
Master Class Videos / Video Rental Club

### PRIVATE LESSONS

All Styles, From Mozart to Metal  
Piano • Guitar • Sax • Bass • Flute  
Clarinet • Trumpet  
And More

ALL SCHOOL MUSIC SUPPLIES

## Come Join Our Family



Contemporary Worship Sunday - 9:00 AM  
Sunday School and Traditional Worship 10:30 AM  
Praise Service - Thursday Evening 7:00 PM  
Day and Evening Bible Studies

Caring Spiritual Support and Fellowship  
Inspiring Music

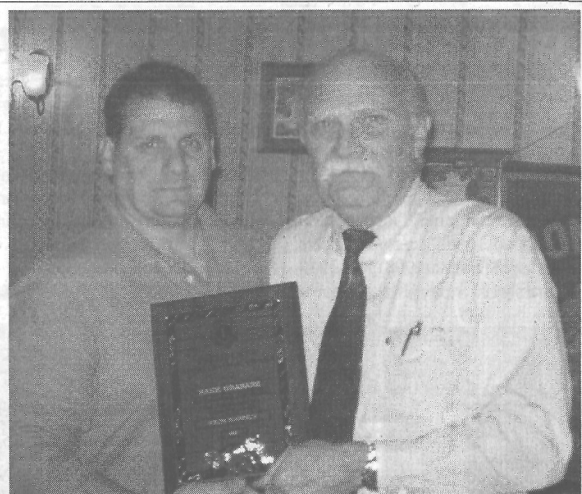


**Wesley Church**  
1500 Plainfield Avenue  
South Plainfield, NJ

Wesley Church provides a Message of Hope and a place for people of all ages to come to understand and know God

Rev. Dr. Nehemiah Thompson, Pastor  
Church Office 908-757-2838 / Residence 908-756-1044  
E-mail: [WUMCSP@juno.com](mailto:WUMCSP@juno.com)





South Plainfield Lions Club President Ron DeSclafani presented the 2005 President's Appreciation Award to Lion member Hank Grabarz for his exceptional contribution and dedicated service to the South Plainfield Lions Club.



## All About Pets....

By Anthony Loomis

As the weather warms, the grass grows, the bugs come out and our pets need protection. Fleas, ticks and mosquitoes are some of the most common parasites affecting dogs and cats. Not only can these critters bite our pets, but they can also transmit disease.

Fleas are small, about one millimeter, wingless, brown and fast moving. Most commonly they cause our pets to be very itchy. Often this can progress to inflamed skin, bald spots and skin infections as they continually scratch, lick, and bite themselves trying to get comfortable.

Ticks can attach to our pets and cause irritation, skin damage, anemia and transmit disease. In our area Lyme disease is the most common tick transmitted disease. This can cause fever, lethargy, decreased appetite and lameness. To remove a tick from your pet, the first thing to do is apply a small amount of alcohol to the area to loosen it, then using tweezers pull it off slowly as close to the head as possible.

Mosquitoes are not only irritating when they bite our pets, but they too can transmit disease. Heartworm is



spread by infected mosquitoes to animals. This disease may lead to heart failure and even death if left undetected.

Much has changed in the way we treat our pets against these insects. Flea baths or tick collars are no longer the treatments of choice as these can be highly toxic, inducing severe side effects like vomiting, fever, seizures, coma, and possibly death. Instead of dipping your dog or cat, you can easily apply a drop to your pet's skin that will not only kill the fleas and ticks presently on them, but also prevent them from getting any future infestations for one month.

There are many products out there that claim to protect our pets against these parasites. Make sure you speak to your veterinarian to choose the protection that is best for your individual pet.

Anthony Loomis, DVM grew up in Scotch Plains and attended St. Joseph's High School. He majored in Animal Health at the University of Georgia and attended Oklahoma State University for veterinary school. His special interest is exotic animal medicine and surgery. He recently moved to South Plainfield and married his wife, Michelle.

## southplainfieldpeople

### Milestones

#### Bar Foundation Honors SPHS Student

The Middlesex County Bar Foundation (MCBF) will hold a special awards dinner on Wednesday, May 10 at 6:30 p.m. Supreme Court Justice Barry Albin, Appellate Division Judge Susan Reisner and Presiding Family Part Judge Glenn Berman will join the MCBF to honor the winners of the Seventh Annual Project Law Essay Contest for Middlesex County High School Students and the 2005-

2006 Middlesex County High School Mock Trial Champions.

Grand Prize was awarded to South Plainfield High School student Nicole Aiello for her Persuasive Essay.

The Project Law Essay Contest, begun in 2000, has grown tremendously in the past four years. Over 450 essays were submitted this year. This project is co-sponsored by the New Jersey State Bar Foundation and made possible through funding from the IOLTA Fund of the Bar of New Jersey.

#### Kennedy School Rising Stars

Kennedy Elementary School is proud add the following students to the Kennedy Rising Star Program: Academic Improvement-Brianna Mitchell, Tim Nuber, Mary Malara, Aidan McDermott, Emma Sprigley; Promoting a Positive Role Model-Grace Ochoa, Matthew Ozbalik, Kevin Soper, Zachary Wolpin, Alexes Aquilina, Nicole Gerardi, Andy Kopchak, Casidhe Holoboski, Karishma Singh, Ryan Walsh; Act of Kindness-Jake Alba and Attainment of an Individual Goal-Matt Gallant, Scott Pietschker and Sydney Shaw.

#### Alyssa Maiorino Inducted in Alpha Lambda Delta

Alyssa Maiorino, a freshman at Ramapo College of N.J., was inducted into Alpha Lambda Delta National Honor Society on April 8 at the college. Alpha Lambda Delta was founded in 1924.

Alyssa has maintained a 4.0 GPA. Only the top 10 percent of her class was bestowed this honor. Alyssa is a 2005 graduate of South Plainfield High School.

## Cleaning Our Town, One Storm Drain at a Time

(The following is an essay written by Justin Pauls for his Eagle Project.)

When it rains, where do you think the water goes? After it runs off the streets and into the storm drains, you'd think it would go to a water treatment center, right? Wrong. In fact, everything that enters our storm drains and sewers goes directly to our own local water sources. Spring Lake Park is a large collective point for the water to go. After that, it flows into rivers, and later into the ocean. That means everything that enters the storm drains in our town directly effects us and eventually the world.

My name is Justin Pauls and I'm a member of Boy Scout Troop 309 in South Plainfield. In order to achieve the rank of Eagle Scout, I must organize and lead a service project for the town. Through collaboration with Alice Tempel, who specializes in environmental issues in our town, I chose to complete a project that would alert everybody to the issue of how storm drains work. With the help of my troop, I plastered over 100 small circular disks on storm drains around town. These disks read "No Dumping-Drains to River." As we did that, we also delivered informative pamphlets to houses in the area we worked on.

The pamphlets contain valuable information to help us reduce pollution in our town. I will share some of the information for those of you who didn't receive one: convert part of your lawn into a garden, water lawn only when necessary, use lawn fertilizer sparingly, leave grass clippings after mowing, plant trees and keep mature ones, wash your car in a car wash-not in your driveway, use a pooper scooper if you have a pet, direct gutter downspouts away from pavement or to a rain barrel, check your driveway or garage for car leaks, pump septic tank regularly and do not litter.

These are only some of the things you can do to help our environment. Please do whatever you can, it'll benefit all of us!

### HOME TIP:

Remove weeds growing in cracks of patios, sidewalks, driveways immediately. Repair small cracks in concrete with caulk. Seal asphalt driveways every other year with an oil-based sealant.



E. A. Boniakowski Agency, Inc.  
929 Washington Ave.,  
Green Brook, NJ 08812

Direct Line: 732.529.0320 • Office: 732.968.0700  
EMAIL: Brigitte.nowicki@era.com • www.eabrealty.com



Brigitte Nowicki-Yefko  
Licensed Realtor for 20 Years  
NJAR Circle of Excellence Award Winner

## HOMETOWN HEROS

3 to 6 Foot Subs • Sloppy Joe Platters • Gourmet Wrap Platters  
Assorted Finger Sandwich Platters • Homemade Salads  
Assorted Sandwich Platters • Complete Line of Hot Trays

South Plainfield's **1st Choice**  
for Quality Catering

HOMETOWN HEROS

340 Hamilton Blvd. So. Plainfield  
908-755-HERO (4376)

Now taking orders for Holy Communion parties

OPEN SUNDAY



## Twin City Pharmacy

Tel. (908) 755-7696 Fax (908) 755-6003

1708 Park Ave., South Plainfield, NJ 07080 (Next to Farmer's Market)

Today's Modern Pharmacy with Old Fashioned Values

DME Provider for US Healthcare/AETNA & CIGNA

Medicare and Medicaid Provider  
Solaris In-Network DME Provider



MEDLINE  
Rollator with  
Seat/Loop  
Brake  
\$99.95

- Ostomy Supplies inc. Hollister & Convatec
- Full Line of Diabetic & Wound Care Products
- Hospital Beds - Commodes
- Wheelchairs - Walkers
- Enteral Feeding Supplies & Supplements

REGIONAL HOSPICE PROVIDER

24 Hour Emergency Care Service - Free Delivery

## All About U



### Salon & Spa

(732) 516-0155

285 Central Avenue, Metuchen

Is proud and honored to be sponsoring  
a **Cut-A-Thon** on Saturday,  
May 6 from 3 pm - 6 pm on behalf of  
**Jonathan Verges** and his cause.

For additional information,  
contact Ana or Danielle  
at All About U Salon & Spa  
(732) 516-0155.

Salon owners **Ana Rodrigues** and **Danielle Bongard**, along with their staff, will open doors to anyone wanting a professional haircut only. The haircuts will be at a discounted price of only \$15 in which **100%** of the proceeds will go directly towards

**Jonathan's Cause, "Metuchen Pulls Together."**

You can assist us in making a difference for Jonathan and other young people with significant challenges. Your support can ensure that. Please consider becoming a part of the "Metuchen Pulls Together Team."

Food, drinks, fun and music (hosted by **Jonathan** himself) will be part of the fun filled afternoon. Please come join us at **All About U Salon & Spa** located at **285 Central Avenue, Metuchen.**







There's a New Lawyer in Town

**Brenda Vallecilla, Esq.**

• 100 Front Street • South Plainfield •  
Corner of Maple and Front Street  
(908) 756-2173; Daily 9-5  
Evenings & Saturdays By Appointment

• Abogada Hispana • Todos Asuntos Legales •

Real Estate Purchase/Sale Business • Bus. Formation • Municipal Court  
Tickets • Drugs/DWI • Divorce • Child Support • Work-Related Injury • SSI

*You deserve it... take a  
mini vacation wih Marty.*

where you are always treated like one of the family  
**Carousel**

307 Oak Tree Ave.

**"The Manicure"**

Choose "Hot Oil" manicure,  
complete with hand & arm  
massage OR "Paraffin Dip"  
& regular manicure-\$16  
(Seniors \$15 • Paraffin Dip Only-\$7)

**"The Facial"**

Includes skin analysis,  
cleansing, hot towels, steam,  
peel, extraction, face massage,  
decollete & mask-customized  
to the client's needs-\$50  
(No hidden costs.)

**908-668-8397**

Flexible hours to suit your needs  
Open Wednesday-Saturday  
Gift Certificates Available

**Coming Soon:  
HOUSE CALLS**

# PAIN?

*Try therapy first.*



Celebrating 5 Years  
in South Plainfield

**Physical Therapy Center  
of South Plainfield**

Theresa L. Conte P.T. Physical Therapist

**(908) 668-1951**

1110 Hamilton Blvd., South Plainfield

Orthopedic Rehabilitation • TMJ • Back & Neck Pain

Most Insurance Plans Welcome • Most HMO's / PPO's Accepted • Medicare Approved  
SERVING UNION AND MIDDLESEX COUNTIES FOR OVER 15 YEARS

**Every Friday  
HAPPY HOUR**

5pm-10pm  
**FREE Grand Buffet**  
\$2 DRINK SPECIALS  
\$3 MARTINIS

**Monday Nites  
WORLD TRAVEL  
POKER TOURNAMENTS**

Doors open @ 6 pm  
Tournaments start  
7 pm & 9 pm sharp  
National Ranking System

**WIN A SEAT ON  
WORLD POKER TOUR**

507 King Georges Rd.  
Rt. 9, So. Woodbridge  
(732) 376-9090  
www.club\_studio9.com

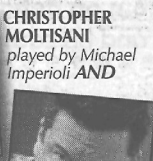
**studie9**

**Join the HBO  
SOPRANO STARS**

for the May 13  
**MOBSTER BALL**



**BOBBY BACALA**  
played by  
Steven Schiripa



**CHRISTOPHER  
MOLTISANI**  
played by Michael  
Imperioli AND

**Our Town Deli  
& Grill**

Eat-in • Take-Out • Delivery

Serving Breakfast, Lunch & Dinner  
100 South Plainfield Ave.

**Our Kids' Menu**

**\*\*SPECIAL\*\*  
\$1.99 (Reg. \$2.99)**

Now Open at 8 AM on Sunday  
(908) 668-0063

## Rainy Day Doesn't Derail Annual Cleanup

Despite the wet weather, approximately 65 environmentally conscious citizens took part in the annual town clean up on Earth Day. The clean up is the kick off to South Plainfield Clean Up Week, sponsored by the Clean Community Advisory Board of South Plainfield. More than 52 bags of trash and 12 bags of recyclables were collected on this day. Volunteers found

numerous tires, a muffler, car parts, and many beverage bottles.

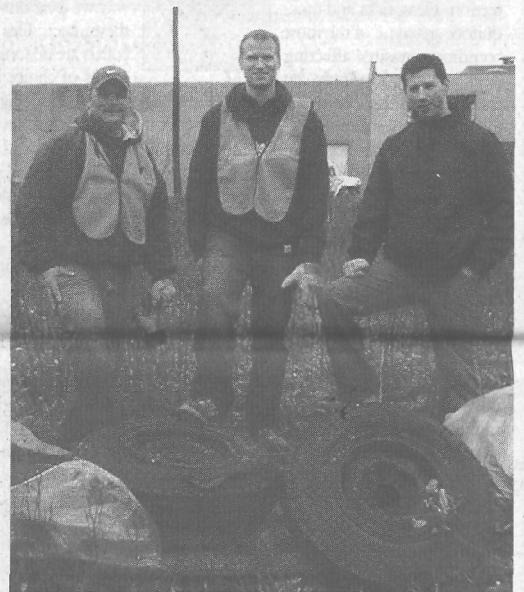
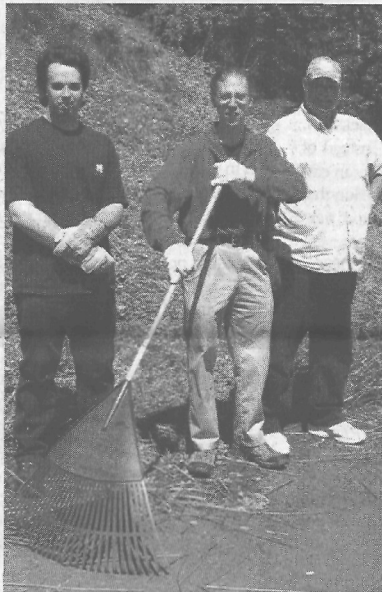
Many volunteers who signed up opted to participate in the cleanup later when the weather is better.

Many other areas need attention, so if you did not make it to the clean up and would still like to participate, call Marie Markey at (908) 755-3213. Remember there are always opportu-

nities for volunteering with the Clean Community Advisory Board throughout the year and we look forward to hearing from you.

We would like to thank Home-town Heros, Krauzsers, Bruno's and all the volunteers who participated and who will participate this week.

-Submitted by Marie Markey





## GOP Taps Bengivenga for Mayor Barletta, Sesok Endorsed for Council

Councilman Robert Bengivenga, Jr. is the choice of South Plainfield Republicans to be their party's candidate for mayor this fall.

Joining Bengivenga on the ticket are longtime residents Alex Barletta and David Sesok, Jr., each seeking three-year terms on the Borough Council. The three were chosen after a two-month-long candidate search and an open screening process.

According to GOP Chair Bob Jones, all three are top-flight candidates, "Robert, Alex and Dave agree on the need to make South Plainfield more affordable for families, and especially our seniors. They are a dynamic team with a strong desire to get our town back on track. I can't think of three people who would better serve South Plainfield."

Bengivenga was elected to the council in 2005 and received more votes than any other candidate in the race, a race where he unseated a 12-year incumbent. He sees controlling taxes and cutting spending as his top goal, noting how seniors on fixed incomes are especially hard hit by rising taxes.

Barletta and Sesok will also make reducing spending and controlling taxes a priority. In fact, according to Sesok, one of the key reasons he chose to run is to get a handle on property taxes. "Residents should not have to choose between paying their property taxes and saving for retirement or saving to send their kids to college," he explained. "But with taxes going up, that's the choice for many families."

All three candidates are eager to start campaigning on the issues. "We need

to start dealing with overlooked problems," said Barletta. "I'm anxious to meet people face-to-face so we can exchange views and discuss how best to deal with quality-of-life issues like traffic and overdevelopment."

"We also need to bring back open government," Bengivenga added. "Open, ethical government is vital if we are to meet the new challenges our town faces."

A self-employed business and property manager, Bengivenga's been active in the South Plainfield Historical Society, Habitat for Humanity and the South Plainfield Cultural Arts Commission. He's also a member of UNICO National and co-chairs that group's annual Columbus Day celebration.

Bengivenga graduated from the University of Scranton with a bachelor's degree in marketing. His most recent project was helping to revive the Edison Valley Playhouse, a community theatre on the Edison-South Plainfield border.

"What strikes me about Robert," said Jones, "is his sincerity and his dedication to public service. He knows the issues, and he's working hard to improve our town. He'll make an outstanding mayor."

Barletta is employed as a commercial and industrial account manager for Midco Waste Systems and is also a successful entrepreneur. He resides on Delmore Ave. with his wife Susan and their two sons, Alex, Jr. and Adam. He's coached baseball, teen-ball and basketball in town and is a former member of the Knights of Columbus.

Sesok and his wife Samantha live on Norway Lane Extension. He is employed in his family's business, Spring Lake Shell and he also coaches football for Bishop Ahr High School.

"We could not be more proud of these three candidates," said Jones. "Robert, Alex and Dave will be out knocking on doors soon, and I'm sure the voters will be as impressed as I am. South Plainfield will be fortunate to have Robert Bengivenga, Jr. as mayor and to have Alex Barletta and David Sesok, Jr. on the Borough Council."



Working hard preparing perogies for the Our Lady of Czesstochowa's annual Feast of St. Anthony from June 6 to June 10 are Rosarian Club members (L to R) Rose Boccia, Jennie Daly, Helen Oschanski, Felix Malecki, Judy Taber, Jo Balko, Jeanette Breitenbach, Helen Malecki, Terry Demico, Helen Dobrzelecki, Betty Muglia, Anne Knuths, Jennie Jankoski, Terry Kaschak and Chairwoman Ann Campanelli. All of the Italian and Polish booths' food is homemade, including the stuffed cabbage, meatballs, sausage and peppers and perogies. Also helping out were Fran Strobeck, Stanley Malecki and Ed and Elsie Larsen.



South Plainfield Suburban Woman's Club Members: (standing) Jean Popik, Filomena Viola, Marge Reidy, Mary Ann Iannitto, June Flannery and Frieda Walker; (seated) Natalie Bergen and Rose Cucuriello.

## NJ State Federation of Woman's Clubs, Sixth District Meeting

The New Jersey Federation of Woman's Clubs Sixth District held their Spring Conference/Achievement Day. The meeting was chaired by Mary Ann Iannitto, vice president of the Sixth District, South Plainfield Suburban Woman's Club. The purpose of the meeting was to permit all clubs presidents in the district to discuss the work and accomplishments of their clubs during the past year.

Present at the meeting were the following presidents, Evelyn Klumb, Woman's Club of Berkeley Heights; Kay McClormack, Borough Improvement League; Marge Bow-

man, Cranford Village Improvement Assoc.; Irene Newman, Woman's Club of Fords; Ann Kircher, North Plainfield Woman's Club; Marie Teleposky, Sixth District; Anne Dillman, Woman's Club of Perth Amboy, Inc.; Patricia Sidun, Sixth District Junior Alumni Woman's Club; Stephanie Cedarvall for Linda Volker, Woman's Club of Rahway; Marge Reidy, Suburban Woman's Club of South Plainfield and Dolores Seidow, Woman's Club of Westfield.

Keynote speaker was Mary Pat Marcelo, NJSFWC First Vice President.

## Bone Marrow Drive for Resident

A minority bone marrow drive will be held on Saturday, May 4 from noon to 4 p.m. at the South Plainfield Post Office, located on Oak Tree Ave.

On Feb. 23, Parag K. Patel was diagnosed with Acute Monocytic Leukemia and has undergone a second round of chemotherapy treatment. On March 23, he and his family were told the only way to save his life is

through a bone marrow transplant.

The family is asking for your help by getting a bone marrow test. It's easy, quick and painless. Your five minutes could mean the difference between life and death for Patel.

For information, call Anuj at (201) 406-4271, Vishal (201) 424-2882 or Kinjal at (201) 247-8363. Or email: hope4parag@gmail.com.

## Summer Drama Workshop Auditions

The South Plainfield Summer Drama Workshop has announced auditions for their 2006 show, "Carousel." The auditions will be held at the South Plainfield Middle School on May 22 and 23, from 5:30 to 9 p.m. It is open to all students completing sixth grade through twelfth grade and one-year post graduation.

Students should bring a non-returnable photo. A short dance routine will be taught, so please wear appropriate clothing and shoes or sneakers for dancing. Previous dance experience is not necessary. Bring a prepared song with sheet music, a tape or CD. Show tunes are suggested. Everyone will be given an opportunity to read from the script. Those interested in crew or orchestra can register during auditions.

Parental help is always needed; more information will be available at auditions, or contact Summer Drama Workshop at (908) 561-5255 or visit [www.spsdw.com](http://www.spsdw.com).

Show dates are August 3, 4, 5 at 7 p.m. and Aug 6 at 2 p.m. The Saturday and Sunday shows will have sign interpreters.

The staff for "Carousel" is: director, Eric Hafen; assistant director, Ellen Cusick; choreographer, Emma Fulton; musical director, Joan Stasio and lighting design, Mark Reilly.

This program has been made possible in part by the Middlesex County Cultural and Heritage Commission and the New Jersey State Council on the Arts/Department of State, a partner agency of the National Endowment for the Arts.

## FOUR SEASONS NURSERY & LANDSCAPE DESIGN CENTER

430 Hamilton Boulevard, South Plainfield

Arriving Daily  
New Selection of Nursery Stock

Bulk Sales • Top Soil • Mulch • Stone • Rubber Mulch  
All Landscape Materials Delivery Available

Weeping Cherry Trees \$149  
Orig. \$199

Fresh selection of shrubs, trees & plants

10% off  
Monrovia Topiary Plants

One Stop Call For All Your Needs

COMPLETE LANDSCAPE SERVICES

Retaining Wall Systems Decorative Walls, Pavers  
Driveways, Walkways, Patio Drainage Systems

Open 7 Days

908-757-4646

Just back from the International Hair Show in New York

Oscar

We now have 3 new methods of hair extensions  
Tressallure \$495 + up  
Flashpoint 808 \$695 + up  
Prom Special ~ Eyelash perms & tints!

Michael & Oscar

"Expect the Best"

MO's Salon

Denise's hours are  
Tues.-Fri. 12-8 p.m.  
Sat. 9a.m.-5 p.m.



908-769-8330

25 South Plainfield Ave.  
(formerly Razor's Edge next to Curves)

NO APPOINTMENT NECESSARY  
BUT RECOMMENDED

## Edith's HAIR SALON

Men's & Ladies' Haircuts

Waxing • Manicures

Pedicures • Perms • Hair Color

Highlights • Make-up

175 Front St., South Plainfield

908-757-2288

Tues.-Thurs. 9-6 • Fri. 8-5

Sat. 8-4 • Closed Sun. & Mon.

Wednesday Only - Senior Citizens  
20% off Any Service

GOLDEN OLDIES  
CONCERT  
Featuring 1960's Recording Group

THE VOGUES

Five O'Clock World My Special Angel  
Turn Around, Look At Me

Friday May 12, 2006 8 PM

South Plainfield High School Auditorium  
Sponsored By South Plainfield Volunteer Fire Dept.

\*\*\* TICKETS ONLY \$15.00 - AVAILABLE AT THE DOOR \*\*\*





# Junior Journalist Corner

## Fee Named "Junior Journalist"



Alexandra Fee with teacher, Barbara Lukas and school principal Sister Nadine.

Alexandra Fee, eighth grader at Sacred Heart School, is this week's winner in the Junior Journalist Program. Her poem, "No Words," has earned her dinner for her family, courtesy of Hometown Heros. Winners and their families will attend a catered dinner from Hometown Heros on May 24.

No Words (Much Inspiration)  
By Alexandra Fee

The words are like feathers  
Floating high, just above my reach  
Close enough to see,  
But too far away to catch.  
My pencil makes many marks,  
But nothing's making sense.  
It's all gibberish to me,  
And it pains me to think  
My paper's still blank,  
And the hands won't stop.  
I have no time to see  
Why I can't write what I believe.  
But then I look up,  
And notice all that's there.  
I've written a poem about  
Not writing a poem.  
Isn't that a little ironic?  
Or perhaps, just downright magical?



## Middle School Band to Perform A World Premiere

At their Spring Concert, to be held on Thursday, May 11, the South Plainfield Middle School Band will perform a new composition written especially for the band by well-known New York composer Michael Valenti.

The piece, "A Day at the Circus," was written by Valenti and arranged by Middle School Band Director Andrew Weiss. It is a short march which reminded the band students of callopie music. A contest was held for the band students to name the march. Weiss played a computer-generated version of the piece and the students gave their opinions on what the composition should be called. Christine Nau and Alyssa Aiello came up with the title, which best embodied the work.

Valenti and Weiss have collaborated on many projects, but this is their first joint effort on a work for the Middle School Band. Michael has composed music for the Emmy Award Winning television series *A Walk through the 20th Century* and shared the Peabody Award for "Newsmark."

Some of the highlights in Valenti's career include composing for six Broadway plays and other various off-Broadway plays. He has written music for the longest running children's musical ever produced in New York City and has composed "Processional for a Pontiff," which was written for the entrance of Pope John Paul II into Central Park during his visit in 1995. Recently he has been asked to compose music for the Big Apple Circus's 25th anniversary, in which "A Day at the Circus" will be included.

Valenti and Weiss are eager to publish "A Day at the Circus" after its Middle School premiere.

From the South Plainfield Library

## Bookmarks

By Kenneth Morgan

Time for the latest news from the South Plainfield Library.

At this writing, there's still time to sign up for the next "Practical Crafting" program here at the library. We'll be hosting a class on t-shirt painting, led by instructor Ronda Wisniewski. There will be two classes that day: 10:30 a.m. and 7 p.m. Participants are asked to bring one washed and ironed white t-shirt to class. Due to limited space, pre-registration is required for this program. There's a materials fee of \$1, payable upon registration. Please call us for more information.

We'll be sticking with our normal schedule of children's Storytime programs next week, three and over are held on Tuesday morning at 10:30, Wednesday evening at 6:30 and Thursday afternoon at 1:15. "Time for 2's & 3's," for children ages two and three, is held on Wednesday morning at 10:30 and Thursday evening at 6:30. And "Books-N-Babies," for children under age three, is held on Friday morning at 10:30. There's no need to register for these programs. For details, please call and ask for Miss Linda or Jaime.

In show biz terms, this next bit is what's called a "teaser." This year's Summer Reading Program, "Paws, Claws, Scales and Tales," is coming soon! We're setting things up, and we'll give you more details as they come in.

We have a couple of meetings set for next week. First, the Friends of the Library will meet at 11:30 a.m. Both members and non-members are welcome to attend and discuss items including ongoing fundraising efforts (like the highly-successful candy sale). Then, the Library Board of Trustees will meet at 7:30 p.m. Members of the public are welcome to attend and

learn more about the Library's present and future plans (like the proposed new library building).

Teaser #2: This year's big Library Book Sale is scheduled for Saturday, June 10. We'll have a pretty good selection of books and other items available at staggeringly low prices. We may have some other stuff available, too; we'll let you know when things are finalized.

A brief word from the library's Notary Public (alias me): Several times, people have come in asking for photocopies to be notarized. Unfortunately, New Jersey law prohibits me from doing so. However, there is a way around this. Just write up a brief statement swearing to the authenticity of the copies. You will then sign this statement, which can be notarized as normal. In effect, this places the burden of vouching for the copies on your shoulders rather than mine. If you have any questions about this don't hesitate to ask.

That's about all for now. As has been noted several times, feel free to contact us for more details. You can call (908) 754-7885, or visit our website at [www.southplainfield.lib.nj.us](http://www.southplainfield.lib.nj.us).

## Tax Sale Time

Any outstanding property taxes or sewer charges will be eligible for tax sale, which is currently scheduled for June 22.

Just a reminder to residents: second quarter tax bills were due on May 1, with a 10-day grace period.

The South Plainfield Tax Office is open Monday through Friday, 8 a.m. to 5 p.m. Payments can be made in person, by mail or put the payment in the drop-off box at Borough Hall.

If you have any questions, call (908) 226-7610.

## IMPORTANT NOTICE to Wholesalers and Retailers of Children's Clothes!

We'll Sell You NAME BRAND KIDSWEAR at 40%-60% BELOW REGULAR WHOLESALE!

HOW DO WE DARE MAKE YOU THIS INCREDIBLE OFFER?

We're in the closeout/liquidation business. We recently negotiated some once-in-a-lifetime deals with clothing manufacturers and distributors who were bankrupt or going out of business. We are now warehousing some of the "hottest" fashions in children's clothes today. Brand new merchandise in factory condition.

Clothes for boys and girls of all ages

We carry styles and fashions from debonair to rakish and funky, everything that's the rage of children in today's marketplace. They will "fly" off your racks when displayed at below retail prices. Or you can choose to price them at regular retail to maximize profits. Please be assured we do not handle, nor will we sell "off-brand" merchandise or cheap imitations. Only premium quality children's clothes with labels you'll recognize instantly.

And you can count on prompt service. We'll see your order gets top priority treatment. We guarantee your order will arrive in perfect condition or simply return it for a "same day" refund.

CHECK US OUT AND COMPARE OUR PRICES QUALITY MERCHANDISE

DO IT TODAY IF YOU WANT TO SEE YOUR PROFITS START SOARING TOMORROW

You can view our line of quality garments and fantastic values, by visiting our website at [www.magickidsusa.com](http://www.magickidsusa.com).

OR CALL 1-888-225-9411

for our FREE color catalog and "confidential" price list

Must Mention Discount Code MK-24289 for HUGE Savings!

## The Way to Property Tax Relief

In the past, the State Supreme Court directed funding through the Abbott-Burke decisions for 31 districts out of a total of 611, significantly adding to the burden on most taxpayers. More recently, the State has proposed a Constitutional Convention to determine what is necessary to provide property tax relief. We believe that what is essential is for the governor, Assembly and Senate to make a fair analysis and act accordingly. We recognize that past actions of the legal system in New Jersey has resulted in a form of income redistribution and subsidization by the majority of taxpayers to finance the Abbott districts, in effect, a quasi form of welfare.

In 1981, the State Supreme Court interpreted the Abbott-Burke clause on "thorough and efficient education" to mean that Abbott districts should receive State funding to enable those districts to spend as much as the "wealthiest" 580 districts. This determination continues to cause property tax disproportion between the two type districts, the non-Abbott being denied their fair share of State funding for education. For example, State aid for education funding for 2006/2007 is projected at \$7 billion; the 31 Abbott districts will receive \$4.2 billion, or 60% and the 580 non-Abbott districts will receive \$2.8 billion or 40% of the overall. Therefore, those in the non-Abbott districts must fund the majority of school district budgets with local property taxes. A comparison showing this inequity is as follows:

### FROM THE Senior Men's FORUM

By Walter J. Pasacrita, Chairman

Abbot Dist.	Local Property Tax	Cost Per Student
East Orange	8%	\$14,152
Newark	9%	15,796
Jersey City	13%	14,420
Camden	3%	15,091
Trenton	8%	14,591
Perth Amboy	11%	13,109
Asbury Park	7%	15,895
New Brunswick	18%	12,070

The above tabulations give examples of what local Abbott district taxpayers contribute to their education system, the balance is paid by you in the form of the State funding formula. Now compare the above with some of the non-Abbott districts in Middlesex County.

Non-Abbott Dist.	Locally Funded	Cost Per Student
East Brunswick	80%	\$10,418
Edison	88%	10,047
Metuchen	90%	11,498
Highland Park	75%	11,170
North Brunswick	83%	9,324
Piscataway	80%	10,445
Woodbridge	84%	9,359
South Plainfield	80%	9,822

Thus, it should be obvious that while paying a major cost for educating the children in South Plainfield, you are also subsidizing the Abbott

districts as a result of the court decision mentioned above. The fact is that the logic of the Supreme Court to redistribute income in an effort to provide State funding for the Abbott districts to spend as much as the wealthiest districts has proven to be a dismal failure when test scores have never improved. Wasn't that the intention to begin with? Also, isn't it time for the residents of the Abbott districts to pay their fair share of educating their children?

It is high time for our legislators to regain control of state funding for education policies and thus offer us true property relief. This can be done ideally by establishing funding to all school districts on a per capita basis regardless of district location. A satisfactory alternate would be to limit state funding of Abbott districts to the state average cost of \$10,817. We suggest that property taxpayers in South Plainfield contact their legislators and demand that the flawed Supreme Court decisions we mentioned be suitably amended to achieve badly needed property tax relief. If we note that there is no appropriate action taken, then our State representatives deserve to be voted out of office, apparently the only language they understand.

Editors Note: Walter Pasacrita is chairman of the Senior Men's Forum of South Plainfield. The forum will periodically submit columns on their views and opinions. If you would like to know more about the group, you are invited to attend one of their meetings held on the first Tuesday of the month at VFW, located on Front St., 1:30 p.m.



## FEATURE HOME South Plainfield \$465,000

Elegant custom home in Kennedy school area. Gorgeous master suite addition. Big living room with woodburning fireplace. Fenced yard with large deck. Corner lot with additional 2-car side drive. 4 large bedrooms, 3 full baths-2 Jacuzzis. Multi zone heating and cooling. Full finished basement.



Call Steve Gold



Moretti Realty

908-755-5300 x408  
Fax 908-755-5052  
Cellular 732-266-1224  
Email: [GoldS@morettiirealty.com](mailto:GoldS@morettiirealty.com)

225 Maple Ave., South Plainfield, NJ 07080  
Each Office Is Independently Owned and Operated

Steve Gold



# Sports

## Ponytail Softball Batters Box



It was very unfortunate that the Ponytail Softball Recreation Opening Day Ceremonies had to be cancelled two weekends in a row due to bad weather. We know how much the girls look forward to showing off their banners, playing softball all day and visiting our wonderful snack stand. We also missed out on meeting some new members of the Recreation Board, as well as new members of the Ponytail Association. Welcome to all and let us all enjoy the season ahead!

At this time, the Parent's Ponytail Association would like to thank all the sponsors that have continuously supported our Ponytail Softball program by donations and/or advertising your business with a sign that is placed on the outfield fences of our fields at the Pitt Street Park Complex. We would like to recognize four new sponsors that joined to help support this wonderful program. They are: CQI Floors, Oak Tree Farms, Jer-Tex Computer Solutions and the South Plainfield Funeral Home. The new signs were made by Rich Durso and G&G Graphics of South Plainfield. Thank you Rich so much for your hard work and quick turn around. The signs came out beautiful.

The Ponytail Softball Program benefits more than 225 young ladies of South Plainfield each year. All the funds that are collected go directly towards improving and upgrading the softball facilities as well as benefiting the girls who play recreation and/or all-star softball. If you are interested in funding a sign or making a donation, please contact any member of the South Plainfield Parent's

Ponytail Association or our webmaster via this website: <http://www.spponytail.com/SponsorLetter.html>. Your support would be greatly appreciated. Thank you.

As a reminder, the next Parent's

Ponytail Meeting will be held on Tuesday, May 23 beginning at 8 p.m. at the PAL building located on Maple Ave. All parents are welcome. Come share your thoughts and ideas. Hope to see you there!

## 2006 Spring Track Team Relay Championship Results

The Sacred Heart Spring Track Team competed in the 2006 Central Jersey Catholic Track Conference Relay Championships on Saturday, April 29, at Bishop Ahr High School track in Edison.

Fifty-three Sacred Heart runners competed and placed in 14 out of 20 events against nine other Catholic schools winning seven first, two second, five third, two fourth, one fifth and one sixth places. The team took home 28 gold, eight silver and 36 bronze medals.

In addition, our runners set three new conference records. All results will be posted to the CJCTC website [www.leaguelineup.com/cjctc](http://www.leaguelineup.com/cjctc). Congratulations to all runners! Proud medal/pin winners are:

Event	Place	Relay Team
Girls K,1,2-4x100	2	G. Bengivenga, L. Policarpio, B. Diefenbach, K. Whitaker
Boys K,1,2-4x100	6	J. Inigo, T. Diefenbach, M. Morgan, J. de Castro
Boys 3,4,5-4x100	1	R. Vielma, A. Wright, M. Clandella, D. Eke
Girls 6,7,8-4x100	1	G. Pinto, J. Brown, J. Gonzalez, K. Muglia
Boys 6,7,8-4x100	1	M. McHugh, A. Pinkard, J. Edney, J. Morgan
Boys 6,7,8-4x100	3	J. Blair, K. Whitaker, C. Gbogi, N. Montuori
Boys 6,7,8-4x100	5	J. Howard, W. Gerlitz, S. Piersanti, A. Muglia
Girls 6,7,8-4x200	3	G. Pinto, A. Novak, J. Gonzalez, K. Muglia
Boys 6,7,8-4x200	1	A. Muglia, A. Pinkard, J. Edney, J. Morgan*
Boys 6,7,8-4x200	4	J. Blair, S. Piersanti, C. Gbogi, A. Eke
Boys 3,4,5-4x400	3	D. Eke, R. Vielma, P. Bogart, E. Garcia
Boys 6,7,8-4x400	1	M. McHugh, A. Eke, N. Montuori, A. Muglia
Boys 3,4,5 Sprint Medley	3	M. Clandella, A. Wright, D. Eke, R. Vielma
Girls 6,7,8 Distance Medley	3	K. Muglia, J. Gonzalez, G. Pinto, A. Novak
Boys 6,7,8 Distance Medley	4	C. Gbogi, N. Montuori, A. Eke, A. Gerlitz
Girls 6,7,8 Shot Put	1	J. Brown, G. Pinto
Boys 6,7,8 Shot Put	1	J. Morgan, J. Blair
Boys 6,7,8 Shot Put	2	J. Edney, J. Howard

\*New record

## BUSINESS/PROFESSIONAL/SERVICES

### LANDSCAPING

**Silver Creek Landscaping**  
SOUTH PLAINFIELD

**COMPLETE LAWN MAINTENANCE**

- LANDSCAPE PLANTINGS
- SHRUB & TREE PRUNING
- HYDRO SEEDING & SOD
- MULCH / STONE / TOPSOIL
- RETAINING WALLS
- BRICK PAVERS - PATIOS & WALKS
- RESIDENTIAL & COMMERCIAL
- FREE ESTIMATES -

**908-756-7272**

**SHADES OF GREEN**

**Landscape Design & Installation**



**Complete Property Maintenance**

**Landscaping & Lawn Maintenance, LLC**

Call Today to Schedule your Landscaping Services 732-548-1168

**Lalaria Landscaping**

**LANDSCAPING**

**Leslie Chambers**  
Telephone: (908) 977-1668  
Fax: (908) 757-5175

• Fully Insured •  
Affordable and Reliable!

**ROSS' LAWN CARE**  
**LAWN CARE**

Mulch • Stone • Sod • Edging  
Trimming • Topsoil



Free Estimates  
**908-755-1438 SOUTH PLAINFIELD**

**GRADUATE**

Free Estimates

**LAWN CARE**  
**LAWN MAINTENANCE**  
**LANDSCAPE DESIGN**  
Mulch Beds • Pavers • Top Soil  
Stone • Aeration • Thatching  
Commercial - Residential  
**(732) 548-0752**

**J&J Landscaping**  
**SOUTH PLAINFIELD**

• Lawn Maintenance  
• Yard Clean Ups  
• Mulching  
• Spring Clean Ups

**908-757-5098**

Free Estimates  
Senior Citizen Discounts



By Glenn Cullen

## JUNIOR BASEBALL CLUB NOTES

The next, and final, Booster weekend is scheduled for May 19 and May 20. If you have not done so this is your last opportunity to can. Failure to work a booster assignment may result in the loss of playoff eligibility.

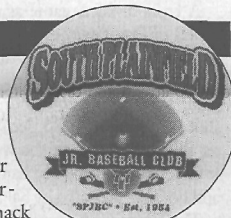
Traveling All-Star try-outs, by age group, are listed on the Clubhouse bulletin board. If you are interested please look at the bulletin board for dates and times. Remember there has been a change in the birth date requirements which may affect a player's eligibility.

The SPJBC is preparing for its Memorial Day Weekend Tournament, and Father's Day Baseball Classic. The club is looking for volunteers to work the snack stand as well as

the ever important snack stand captains. Please contact the club or Rick Walton if you are available.

This weekend's field duty assignments are: SFYB Mets and SEY-C A's on May 6 at 7 a.m.; SEA Braves and PA Orioles on May 7 at 8 a.m.

The SPJBC is still looking for volunteers for the 2006 season. In particular, the SPJBC needs snack stand captains. Anyone interested in being captain is asked to call the SPJBC at (908) 754-2090 or e-mail the club at [southplainfieldjbc@yahoo.com](mailto:southplainfieldjbc@yahoo.com). Visit the SPJBC website at [www.leaguelineup.com/spjbc](http://www.leaguelineup.com/spjbc).



## LEGAL NOTICES

BOROUGH OF SOUTH PLAINFIELD  
MIDDLESEX COUNTY, NEW JERSEY  
LEGAL NOTICE

PLEASE TAKE NOTICE that the undersigned has filed an application with the Zoning Board of Adjustment of the Borough of South Plainfield for a Use Variance and Preliminary and Final Site Plan approval for the expansion of a non-conforming contractor's storage yard for the storage of vehicles and equipment and for any other waivers or variances the Board may deem necessary regarding the premises at 6000 Hadley Road also designated as Block 528.01, Lot 46 on the Borough of South Plainfield Tax Map.

A public hearing has been scheduled for May 25, 2006 at 8:00 p.m. in Borough Hall, South Plainfield, New Jersey. When the case is called you may appear either in person, or by agent or attorney, and present any objections that you may have to the granting of the relief sought. Plans and other documentation relating to this application or appeal are on file at the Building Department in Borough Hall and are available for inspection during regular business hours.

Respectfully,  
Thomas S. DiBiasi  
Attorney for Applicant, Verizon-New Jersey, Inc.

\$53.50

May 5, 2006

BOROUGH OF SOUTH PLAINFIELD  
MIDDLESEX COUNTY, NEW JERSEY  
LEGAL NOTICE

BE IT RESOLVED BY THE GOVERNING BODY OF THE BOROUGH OF SOUTH PLAINFIELD, NEW JERSEY, THAT:

WHEREAS the Borough of South Plainfield wishes to improve the intersection of Belmont Avenue and Metuchen Road; and

WHEREAS the Borough appointed an engineering firm pursuant to a fair and open process in accordance with N.J.S.A. 19:44A-20.4 et seq; and

WHEREAS the Borough Engineer, CME Associates, has submitted a proposal in the amount of \$18,874.00 to perform said design, survey and bid preparation; and

WHEREAS this contract is being awarded without competitive bidding as "Professional Services" in accordance with N.J.S.A. 40A:11-5(1) (a); and

WHEREAS funds have been certified by the Chief Financial Officer and will be made available in the Engineering Budget, account # 6-01-20-165-000-235;

**NOW THEREFORE BE IT RESOLVED** by the Governing Body of the Borough of South Plainfield that authorization is hereby given to enter into a professional services contract with CME Associates for the design, survey and bid preparation for the improvements at the intersection of Belmont Avenue and Metuchen Road at a cost not to exceed \$18,874.00.

ATTEST:  
Vincent Buttiglieri/Municipal Clerk

\$46.90

May 5, 2006

**Support Our Advertisers They Support Us!**

**Expose yourself.**

Get great exposure for your business every week in the Observer.

**Don't Wait. Call 908.668.0010**



**Giordano Landscaping**

- Pavers • Ponds
- Waterfalls • Retaining Walls
- Mulch • Top Soil • Stone • Sod
- Seed • Dethatching • Aerating
- Landscape Lighting • Junk Removal

(908) 757-1513 / (908) 397-1097

**Pathak & Shah, LLP**

Attorneys & Counsellors at Law

51 Cragwood Road, Suite 102  
South Plainfield, NJ 07080

Phone: (908) 769-7000  
Facsimile: (908) 769-7774  
www.ps-legal.com

**Our Lady Of Czestochowa R.C. Church**

807 Hamilton Blvd., South Plainfield

**MASS SCHEDULE**

Daily at 8am except Wednesdays  
(908) 756-1333

Tues. Miraculous Medal Novena followed by Mass  
Thurs. Mass followed by Exposition of the Blessed Sacrament until noon

**Weekend Schedule: Saturday evenings 5:30pm  
Sunday mornings 8am and 11am**

**Manufacturer's Warehouse Sale!!!**

May 8 - 12, 2006 10am - 3pm

\*Lawn & Garden Samples for SALE!!  
Planters, Garden Stakes, Statues

\*\*Christmas Items for SALE!!  
Trees, Wreaths, Table Top Decor

3630 Kennedy Rd.  
South Plainfield

CASH ONLY - All Sales Final  
Pictures are just an example of  
MANY items available!

**SPECIAL PRICE!! \$55.00**  
6.5' Tree - 450 Clear Lights  
Only 50 Available!!

**Want to know what's going on... Subscribe!**

☒ Yes, I want home delivery of the Observer.

NAME \_\_\_\_\_

ADDRESS \_\_\_\_\_

CITY \_\_\_\_\_ STATE \_\_\_\_\_

ZIP \_\_\_\_\_ PHONE \_\_\_\_\_

CREDIT CARD NO. (MC OR VISA) EXP. DATE \_\_\_\_\_

NUMBER \_\_\_\_\_

Send check or money order for \$25 (one year (out-of-town-\$30)) to: South Plainfield Observer, 1110 Hamilton Blvd., Suite 1B, South Plainfield, NJ 07080.  
Save a stamp.... call in your subscription request! (908) 668-0010.

**Junior Journalist**

**WINNER**

Charlie and Debbie Kurland of Hometown Heros deliver dinner to Junior Journalist winner Sang Le, who is joined by parents, John and Theresa, and siblings Victor and Kimmy. Congratulations!

# Sports

## HIGH SCHOOL GOLF

By SEBASTIAN LASOTA

## Golf Team Meets the Challenge

The third week of April proved to be a busy one for the South Plainfield golfers, who were scheduled to play four consecutive days. The week started with a challenge against Woodbridge. On April 18, the undefeated Tigers took on their division rival at West Nine. Our golfers prevailed with a 144-178 victory.

Anthony Moretti led the Tigers with a one over par 34, while Danny McCreesh was right behind with a two over par 35. Sophomores J.R. Licato, Vinnie Padula and Andy Gray rounded out the scoring. Licato shot a four over par 37, while Padula and Gray fired 38's. The Tigers improved their record to 5-0 on the year and 3-0 in divisional play.

The next day the Tigers headed up to East Brunswick to challenge the Bears at Tamarack Golf Course. This was a much anticipated matchup, with East Brunswick being ranked #1 in the county and South Plainfield holding the second position. The task proved too much to handle as the Bears, ranked thirteenth in the state, defeated the Tigers 161-182. "We tightened up, we squeezed the clubs too hard, and got a little nervous. They were good, but we should have taken them," said Danny McCreesh who led all scorers with a four over par 40. Following him was Brad Martin with a 10 over par 46. J.R. Licato fired a 47 and Vinnie Padula rounded out the scoring with a 49.

After the Wednesday defeat, the Tigers bounced back on Thursday with a victory over a divisional rival Colonia 150-159. Brad Martin led the Tigers with a two over 35. Rounding out the scoring was Danny McCreesh



Standing (left to right): Vinnie Padula, Brad Martin, Anthony Morretti and J.R. Licato. Bottom row: Sam Martin and Danny McCreesh.

38, J.R. Licato 38, Anthony Morretti and Andrew Gray with 39's.

A cross-division game against the Chiefs of Piscataway closed the week on Friday. Billy Ashnault and Brad Martin shot 39's to lead the Tigers, while Bryan Hunt and Andrew Gray shot 41's in a 160-186 decision. After this final match of the week, our team relaxed and enjoyed hamburgers and hotdogs prepared by Sal Severini.

The Tigers are currently ranked second in the county according to the *Home News Tribune* and second in the

area according to the *Courier News*.

The outlook for the approaching counties and sectionals is very positive. "With no seniors on the roster, Coach Kavka has to be excited for what is yet to come," explained Danny McCreesh, who believes the team will grow even stronger next year. The team's expectations for this season are, as Coach Kavka stated: "First to win the White Division and then go as far as we can in counties and states, improve our skills, and have as much fun as we have as a team."

## FROM THE DESK OF DEBBIE BOYLE

Senator Barbara Buono has worked diligently in obtaining funding for various projects in South Plainfield and I commend her for obtaining grants. I understand that since 2002 she has been fighting for reform for re-evaluation of the Abbott Districts and I support her efforts. South Plainfield is now drowning in their Board of Education budget and who does this hurt in the long run, our children.

With regard to our budget, we have to lose some of the world language teachers, along with computer teachers, SAC counselors and a variety of other programs and professionals. This stunts the growth of our children. We are 17th in spending per pupil in Middlesex County, while many neighboring towns spend at a much higher rate per pupil. I continue to urge the residents of Middlesex County and South Plainfield to visit the web at [spnet.k12.nj.us](http://spnet.k12.nj.us) in support of Bill SCR-37, along with Assemblymen Peter J. Barnes, Jr. and Patrick J. Diegnan, Jr., on their proposed bill A-2814 seeking re-evaluation of the Abbott Districts' funding, which comes from thousands of our tax dollars. Thank you for your continued support.

As Tiger 24 came to a successful close on Saturday, April 29, there were so many terrific people who were involved in this wonderful event and insured its success. Once again, thank you to Peer to Peer Leadership students at SPHS, under the leadership and direction of Mrs. Martko, Mr. Baker, Mr. Hajduk, Ms. Vandermark, Ms. Zurka, Mr. Encinas and freshman advisor Ms. Raimondo, in conjunc-

tion with Sodexho and all the food and beverages that you donated for this event along with your constant help. Thank you to our administration and the SP Police Department, who were in attendance for the 24-hours and the participants, which included our own administration, teachers and pupils and the people who donated pledges. There were approximately 500 people in attendance and everyone should be proud of the way our children conducted themselves. The SPHS Athletic Booster Club manned the snack stand with volunteers for most of the 24-hours, cooking, making hot chocolate and cheering on the crowd.

Patti from Sodexho, I was truly saddened that I could not master the art of twisting the mop correctly in the squeegee, as you laughed at me, but I had no problem riding and cackling on same. Mr. Bohn, Mr. Pennisi, Mr. Morgan and Mr. Bugey, thank you for helping at the BBQ and a never ending thank you to Mickey Wrublevski and Teri Pileggi for coordinating the snack stand and all that is entailed in that huge undertaking.

The SPHS Athletic Booster Club continues to ask for help at all athletic program. Parents are needed to volunteer in the snack stand for the upcoming track meets for May 13, 26, 27 and June 2, 3 and 7. Contact Teri Pileggi at (908) 754-4620 ext. 248.

Riley Hubner, you are one remarkable young man. You came through one more hurdle in your life and it was wonderful to see you at Tiger 24. Our thoughts and prayers are with you and your family. Maryellen

Martko, our thoughts and prayers are with you and your family.

Bravo to Tom Kuyper on your article in the *Courier News* the week of April 17 entitled "Youth coaches should let kids play multiple sports." I agree that it should be the desire and motivation of all coaches to help each player to improve, have fun and mature and not tell a player that they cannot be the best in every sport. Shouldn't coaches encourage each athlete to improve their skills and pursue their hopes and passions and to play to be the best they can be and achieve that dream?

A first at South Plainfield High School, Mr. SPHS, was fantastic! How cool was that and well attended by students and parents. This male pageant used the talents of the participants to create an enjoyable evening. Mr. Baker, Gina Severini and Melissa Szeliga you did a tremendous job along with their teacher and Peer to Peer Leadership volunteers. Patrick Hunter, crowned Mr. SPHS, and all the contestants, I give you so much credit for participating in this event, you all shined.

Thank you to those who participated in the Grant Elementary School 2007 Stokes "Spirit Wear" fundraiser. The next upcoming event will be a Wall Ball Tournament encompassing grades one through six. Flyers have been sent out and there will be boxes placed in all elementary school offices marked Grant School for all the forms and entry fees. Send forms with your child to your respective school for placement in boxes. If you have any questions, contact Chairman Bill Cochrane.



# LEGAL NOTICES

## BOROUGH OF SOUTH PLAINFIELD MIDDLESEX COUNTY, NEW JERSEY LEGAL NOTICE

### ORDINANCE No. 1731

BE IT RESOLVED BY THE GOVERNING BODY OF THE BOROUGH OF SOUTH PLAINFIELD, MIDDLESEX COUNTY, NEW JERSEY, THAT:

Ordinance #1731 entitled: AN ORDINANCE ESTABLISHING STORMWATER CONTROLS IN THE BOROUGH OF SOUTH PLAINFIELD was adopted on first reading and advertise in The Observer on Friday, May 5, 2006 and a public hearing be scheduled for Tuesday, May 16, 2006 at 8:00 p.m. in the Municipal Building, 2480 Plainfield Avenue, South Plainfield, NJ 07080.

### ORDINANCE NO. 1731

An ordinance establishing the Stormwater Controls in the Borough of South Plainfield, Middlesex County, New Jersey

#### Section 1: Scope and Purpose

##### A. Policy Statement

Flood control, groundwater recharge, and pollutant reduction through nonstructural or low impact techniques shall be explored before relying on structural BMPs. Structural BMPs should be integrated with nonstructural stormwater management strategies and proper maintenance plans. Nonstructural strategies include both environmentally sensitive site design and source controls that prevent pollutants from being placed on the site or from being exposed to stormwater. Source control plans should be developed based upon physical site conditions and the origin, nature, and the anticipated quantity or amount of potential pollutants. Multiple stormwater management BMPs may be necessary to achieve the established performance standards for water quality, quantity, and groundwater recharge.

##### B. Purpose

It is the purpose of this ordinance to establish minimum stormwater management requirements and controls for "major development," as defined in Section 2.

##### C. Applicability

1. This ordinance shall be applicable to all site plans and subdivisions for the following major developments that require preliminary or final site plan or subdivision review:
  - a. Non-residential major developments; and
  - b. Aspects of residential major developments that are not pre-empted by the Residential Site Improvement Standards at N.J.A.C. 5:21.

##### D. Compatibility with Other Permit and Ordinance Requirements

Development approvals issued for subdivisions and site plans pursuant to this ordinance are to be considered an integral part of development approvals under the subdivision and site plan review process and do not relieve the applicant of the responsibility to secure required permits or approvals for activities regulated by any other applicable code, rule, act, or ordinance. In their interpretation and application, the provisions of this ordinance shall be held to be the minimum requirements for the promotion of the public health, safety, and general welfare. This ordinance is not intended to interfere with, abrogate, or annul any other ordinances, rule or regulation, statute, or other provision of law except that, where any provision of this ordinance imposes restrictions different from those imposed by any other ordinance, rule or regulation, or other provision of law, the more restrictive provisions or higher standards shall control.

#### Section 2: Definitions

Unless specifically defined below, words or phrases used in this ordinance shall be interpreted so as to give them the meaning they have in common usage and to give this ordinance its most reasonable application. The definitions below are the same as or based on the corresponding definitions in the Stormwater Management Rules at N.J.A.C. 7:8-1.2.

"CAFRA Planning Map" means the geographic depiction of the boundaries for Coastal Planning Areas, CAFRA Centers, CAFRA Cores and CAFRA Nodes pursuant to N.J.A.C. 7:7E-5B.3.

"CAFRA Centers, Cores or Nodes" means those areas within boundaries accepted by the Department pursuant to N.J.A.C. 7:8E-5B.

"Compaction" means the increase in soil bulk density.

"Core" means a pedestrian-oriented area of commercial and civic uses serving the surrounding municipality, generally including housing and access to public transportation.

"County review agency" means an agency designated by the County Board of Chosen Freeholders to review municipal stormwater management plans and implementing ordinance(s). The county review agency may either be:

A county planning agency; or

A county water resource association created under N.J.S.A. 58:16A-55.5, if the ordinance or resolution delegates authority to approve, conditionally approve, or disapprove municipal stormwater management plans and implementing ordinances.

"Department" means the New Jersey Department of Environmental Protection.

"Designated Center" means a State Development and Redevelopment Plan Center as designated by the State Planning Commission such as urban, regional, town, village, or hamlet.

"Design engineer" means a person professionally qualified and duly licensed in New Jersey to perform engineering services that may include, but not necessarily be limited to, development of project requirements, creation and development of project design and preparation of drawings and specifications.

"Development" means the division of a parcel of land into two or more parcels, the construction, reconstruction, conversion, structural alteration, relocation or enlargement of any building or structure, any mining excavation or landfill, and any use or change in the use of any building or other structure, or land or extension of use of land, by any person, for which permission is required under the Municipal Land Use Law, N.J.S.A. 40:55D-1 et seq. In the case of development of agricultural lands, development means: any activity that requires a State permit; any activity reviewed by the County Agricultural Board (CAB) and the State Agricultural Development Committee (SADC), and municipal review of any activity not exempted by the Right to Farm Act, N.J.S.A. 4:10C-1 et seq.

"Drainage area" means a geographic area within which stormwater, sediments, or dissolved materials drain to a particular receiving waterbody or to a particular point along a receiving waterbody.

"Environmentally critical areas" means an area or feature which is of significant environmental value, including but not limited to: stream corridors; natural heritage priority sites; habitat of endangered or threatened species; large areas of contiguous open space or upland forest; steep slopes; and well head protection and groundwater recharge areas. Habitats of endangered or threatened species are identified using the Department's Landscape Project as approved by the Department's Endangered and Nongame Species Program.

"Empowerment Neighborhood" means a neighborhood designated by the Urban Coordinating Council "in consultation and conjunction with" the New Jersey Redevelopment Authority pursuant to N.J.S.A. 55:19-69.

"Erosion" means the detachment and movement of soil or rock fragments by water, wind, ice or gravity.

"Impervious surface" means a surface that has been covered with a layer of material so that it is highly resistant to infiltration by water.

"Infiltration" is the process by which water seeps into the soil from precipitation.

"Major development" means any "development" that provides for ultimately disturbing one or more acres of land or increasing impervious surface by one-quarter acre or more. Disturbance for the purpose of this rule is the placement of impervious surface or exposure and/or movement of soil or bedrock or clearing, cutting, or removing of vegetation.

"Municipality" means any city, borough, town, township, or village.

"Node" means an area designated by the State Planning Commission concentrating facilities and activities which are not organized in a compact form.

"Nutrient" means a chemical element or compound, such as nitrogen or phosphorus, which is essential to and promotes the development of organisms.

"Person" means any individual, corporation, company, partnership, firm, association, the Borough of South Plainfield, or political subdivision of this State subject to municipal jurisdiction pursuant to the Municipal Land Use Law, N.J.S.A. 40:55D-1 et seq.

"Pollutant" means any dredged spoil, solid waste, incinerator residue, filter backwash, sewage, garbage, refuse, oil, grease, sewage sludge, munitions, chemical wastes, biological materials, medical wastes, radioactive substance (except those regulated under the Atomic Energy Act of 1954, as amended (42 U.S.C. 2011 et seq.), thermal waste, wrecked or discarded equipment, rock, sand, cellar dirt, industrial, municipal, agricultural, and construction waste or runoff, or other residue discharged directly or indirectly to the land, ground waters or surface waters of the State, or to a domestic treatment works. "Pollutant" includes both hazardous and nonhazardous pollutants.

"Recharge" means the amount of water from precipitation that infiltrates into the ground and is not evapotranspired.

"Sediment" means solid material, mineral or organic, that is in suspension, is being transported, or has been moved from its site of origin by air, water or gravity as a product of erosion.

"Site" means the lot or lots upon which a major development is to occur or has occurred.

"Soil" means all unconsolidated mineral and organic material of any origin.

"State Development and Redevelopment Plan Metropolitan Planning Area (PA1)" means an area delineated on the State Plan Policy Map and adopted by the State Planning Commission that is intended to be the focus for much of the state's future redevelopment and revitalization efforts.

"State Plan Policy Map" is defined as the geographic application of the State Development and Redevelopment Plan's goals and statewide policies, and the official map of these goals and policies.

"Stormwater" means water resulting from precipitation (including rain and snow) that runs off the land's surface, is transmitted to the subsurface, or is captured by separate storm sewers or other sewage or drainage facilities, or conveyed by snow removal equipment.

"Stormwater runoff" means water flow on the surface of the ground or in storm sewers, resulting from precipitation.

"Stormwater management basin" means an excavation or embankment and related areas designed to retain stormwater runoff. A stormwater management basin may either be normally dry (that is, a detention basin or infiltration basin), retain water in a permanent pool (a retention basin), or be planted mainly with wetland vegetation (most constructed stormwater wetlands).

"Stormwater management measure" means any structural or nonstructural strategy, practice, technology, process, program, or other method intended to control or reduce stormwater runoff and associated pollutants, or to induce or control the infiltration or groundwater recharge of stormwater or to eliminate illicit or illegal non-stormwater discharges into stormwater conveyances.

"Tidal Flood Hazard Area" means a flood hazard area, which may be influenced by stormwater runoff from inland areas, but which is primarily caused by the Atlantic Ocean.

"Urban Coordinating Council Empowerment Neighborhood" means a neighborhood given priority access to State resources through the New Jersey Redevelopment Authority.

"Urban Enterprise Zones" means a zone designated by the New Jersey Enterprise Zone Authority pursuant to the New Jersey Urban Enterprise Zones Act, N.J.S.A. 52:27H-60 et. seq.

"Urban Redevelopment Area" is defined as previously developed portions of areas:

- (1) Delineated on the State Plan Policy Map (SPPM) as the Metropolitan Planning Area (PA1), Designated Centers, Cores or Nodes;
- (2) Designated as CAFRA Centers, Cores or Nodes;
- (3) Designated as Urban Enterprise Zones; and
- (4) Designated as Urban Coordinating Council Empowerment Neighborhoods.

"Waters of the State" means the ocean and its estuaries, all springs, streams, wetlands, and bodies of surface or ground water, whether natural or artificial, within the boundaries of the State of New Jersey or subject to its jurisdiction.

"Wetlands" or "wetland" means an area that is inundated or saturated by surface water or ground water at a frequency and duration sufficient to support, and that under normal circumstances does support, a prevalence of vegetation typically adapted for life in saturated soil conditions, commonly known as hydrophytic vegetation.

#### Section 3: General Standards

##### A. Design and Performance Standards for Stormwater Management Measures

1. Stormwater management measures for major development shall be developed to meet the erosion control, groundwater recharge, stormwater runoff quantity, and stormwater runoff quality standards in Section 4. To the maximum extent practicable, these standards shall be met by incorporating nonstructural stormwater management strategies into the design. If these strategies alone are not sufficient to meet these standards, structural stormwater management measures necessary to meet these standards shall be incorporated into the design.
2. The standards in this ordinance apply only to new major development and are intended to minimize the impact of stormwater runoff on water quality and water quantity in receiving water bodies and maintain groundwater recharge. The standards do not apply to new major development to the extent that alternative design and performance standards are applicable under a regional stormwater management plan or Water Quality Management Plan adopted in accordance with Department rules.

#### Section 4: Stormwater Management Requirements for Major Development

A. The development shall incorporate a maintenance plan for the stormwater management measures incorporated into the design of a major development in accordance with Section 10.

B. Stormwater management measures shall avoid adverse impacts of concentrated flow on habitat for threatened and endangered species as documented in the Department's Landscape Project or Natural Heritage Database established under N.J.S.A. 13:1B-15.147 through 15.150, particularly *Helonias bullata* (swamp pink) and/or *Clemmys muhlenbergi* (bog turtle).

C. The following linear development projects are exempt from the groundwater recharge, stormwater runoff quantity, and stormwater runoff quality requirements of Sections 4.F and 4.G:

1. The construction of an underground utility line provided that the disturbed areas are revegetated upon completion;
2. The construction of an aboveground utility line provided that the existing conditions are maintained to the maximum extent practicable; and
3. The construction of a public pedestrian access, such as a sidewalk or trail with a maximum width of 14 feet, provided that the access is made of permeable material.

D. A waiver from strict compliance from the groundwater recharge, stormwater runoff quantity, and stormwater runoff quality requirements of Sections 4.F and 4.G may be obtained for the enlargement of an existing public roadway or railroad; or the construction or enlargement of a public pedestrian access, provided that the following conditions are met:

1. The applicant demonstrates that there is a public need for the project that cannot be accomplished by any other means;
2. The applicant demonstrates through an alternatives analysis, that through the use of nonstructural and structural stormwater management strategies and measures, the option selected complies with the requirements of Sections 4.F and 4.G to the maximum extent practicable;
3. The applicant demonstrates that, in order to meet the requirements of Sections 4.F and 4.G, existing structures currently in use, such as homes and buildings, would need to be condemned; and
4. The applicant demonstrates that it does not own or have other rights to areas, including the potential to obtain through condemnation lands not falling under D.3 above within the upstream drainage area of the receiving stream, that would provide additional opportunities to mitigate the requirements of Sections 4.F and 4.G that were not achievable on-site.

##### E. Nonstructural Stormwater Management Strategies

1. To the maximum extent practicable, the standards in Sections 4.F and 4.G shall be met by incorporating nonstructural stormwater management strategies set forth at Section 4.E into the design. The applicant shall identify the nonstructural measures incorporated into the design of the project. If the applicant contends that it is not feasible for engineering, environmental, or safety reasons to incorporate any nonstructural stormwater management measures identified in Paragraph 2 below into the design of a particular project, the applicant shall identify the strategy considered and provide a basis for the contention.
2. Nonstructural stormwater management strategies incorporated into site design shall:
  - a. Protect areas that provide water quality benefits or areas particularly susceptible to erosion and sediment loss;
  - b. Minimize impervious surfaces and break up or disconnect the flow of runoff over impervious surfaces;
  - c. Maximize the protection of natural drainage features and vegetation;
  - d. Minimize the decrease in the "time of concentration" from pre-construction to post construction. "Time of concentration" is defined as the time it takes for runoff to travel from the hydraulically most distant point of the watershed to the point of interest within a watershed;
  - e. Minimize land disturbance including clearing and grading;
  - f. Minimize soil compaction;
  - g. Provide low-maintenance landscaping that encourages retention and planting of native vegetation and minimizes the use of lawns, fertilizers and pesticides;

h. Provide vegetated open-channel conveyance systems discharging into and through stable vegetated areas;

i. Provide other source controls to prevent or minimize the use or exposure of pollutants at the site, in order to prevent or minimize the release of those pollutants into stormwater runoff. Such source controls include, but are not limited to:

- (1) Site design features that help to prevent accumulation of trash and debris in drainage systems, including features that satisfy Section 4.E.3. below;
- (2) Site design features that help to prevent discharge of trash and debris from drainage systems;
- (3) Site design features that help to prevent and/or contain spills or other harmful accumulations of pollutants at industrial or commercial developments; and
- (4) When establishing vegetation after land disturbance, applying fertilizer in accordance with the requirements established under the Soil Erosion and Sediment Control Act, N.J.S.A. 4:24-39 et seq., and implementing rules.

3. Site design features identified under Section 4.E.2.i.(2) above shall comply with the following standard to control passage of solid and floatable materials through storm drain inlets. For purposes of this paragraph, "solid and floatable materials" means sediment, debris, trash, and other floating, suspended, or settleable solids. For exemptions to this standard see Section 4.E.3.c below.

a. Design engineers shall use either of the following grates whenever they use a grate in pavement or another ground surface to collect stormwater from that surface into a storm drain or surface water body under that grate:

- (1) The New Jersey Department of Transportation (NJDOT) bicycle safe grate, which is described in Chapter 2.4 of the NJDOT Bicycle Compatible Roadways and Bikeways Planning and Design Guidelines (April 1998); or
- (2) A different grate, if each individual clear space in that grate has an area of no more than seven (7.0) square inches, or is no greater than 0.5 inches across the smallest dimension.

Examples of grates subject to this standard include grates in grate inlets, the grate portion (non-curb-opening portion) of combination inlets, grates on storm sewer manholes, ditch grates, trench grates, and grates of spacer bars in slotted drains. Examples of ground surfaces include surfaces of roads (including bridges), driveways, parking areas, bikeways, plazas, sidewalks, lawns, fields, open channels, and stormwater basin floors.

b. Whenever design engineers use a curb-opening inlet, the curb piece for the inlet should be type "N-Eco" as provided by the Campbell Foundry Co., or approved equal. The clear space for any other type of curb opening utilized (or each individual clear space, if the curb opening has two or more clear spaces) shall have an area of no more than seven (7.0) square inches, or be no greater than two (2.0) inches across the smallest dimension.

c. This standard does not apply:

(1) Where the review agency determines that this standard would cause inadequate hydraulic performance that could not practicably be overcome by using additional or larger storm drain inlets that meet these standards;

(2) Where flows from the water quality design storm as specified in Section 4.G.1 are conveyed through any device (e.g., end of pipe netting facility, manufactured treatment device, or a catch basin hood) that is designed, at a minimum, to prevent delivery of all solid and floatable materials that could not pass through one of the following:

- (a) A rectangular space four and five-eighths inches long and one and one-half inches wide (this option does not apply for outfall netting facilities); or
- (b) A bar screen having a bar spacing of 0.5 inches.

(3) Where flows are conveyed through a trash rack that has parallel bars with one-inch (1") spacing between the bars, to the elevation of the water quality design storm as specified in Section 4.G.1; or

(4) Where the New Jersey Department of Environmental Protection determines, pursuant to the New Jersey Register of Historic Places Rules at N.J.A.C. 7:4-7.2(c), that action to meet this standard is an undertaking that constitutes an encroachment or will damage or destroy the New Jersey Register listed historic property.

4. Any land area used as a nonstructural stormwater management measure to meet the performance standards in Sections 4.F and 4.G shall be dedicated to a government agency, subjected to a conservation restriction filed with the appropriate County Clerk's office, or subject to an approved equivalent restriction that ensures that measure or an equivalent stormwater management measure approved by the reviewing agency is maintained in perpetuity.

5. Guidance for nonstructural stormwater management strategies is available in the New Jersey Stormwater Best Management Practices Manual. The BMP Manual may be obtained from the address identified in Section 7, or found on the Department's website at [www.njstormwater.org](http://www.njstormwater.org).

#### F. Erosion Control, Groundwater Recharge and Runoff Quantity Standards

1. This subsection contains minimum design and performance standards to control erosion, encourage and control infiltration and groundwater recharge, and control stormwater runoff quantity impacts of major development.

a. The minimum design and performance standards for erosion control are those established under the Soil Erosion and Sediment Control Act, N.J.S.A. 4:24-39 et seq. and implementing rules.

b. The minimum design and performance standards for groundwater recharge are as follows:

- (1) The design engineer shall, using the assumptions and factors for stormwater runoff and groundwater recharge calculations at Section 5, either:

- (a) Demonstrate through hydrologic and hydraulic analysis that the site and its stormwater management measures maintain 100 percent of the average annual pre-construction groundwater recharge volume for the site; or
- (b) Demonstrate through hydrologic and hydraulic analysis that the increase of stormwater runoff volume from pre-construction to post-construction for the 2-year storm is infiltrated.

(2) This groundwater recharge requirement does not apply to projects within the "urban redevelopment area," or to projects subject to (3) below.

(3) The following types of stormwater shall not be recharged:

- (a) Stormwater from areas of high pollutant loading. High pollutant loading areas are areas in industrial and commercial developments where solvents and/or petroleum products are loaded/unloaded, stored, or applied, areas where pesticides are loaded/unloaded or stored; areas where hazardous materials are expected to be present in greater than "reportable quantities" as defined by the United States Environmental Protection Agency (EPA) at 40 CFR 302.4; areas where recharge would be inconsistent with Department approved remedial action work plan or landfill closure plan and areas with high risks for spills of toxic materials, such as gas stations and vehicle maintenance facilities; and
- (b) Industrial stormwater exposed to "source material." "Source material" means any material(s) or machinery, located at an industrial facility, that is directly or indirectly related to process, manufacturing or other industrial activities, which could be a source of pollutants in any industrial stormwater discharge to groundwater. Source materials include, but are not limited to, raw materials; intermediate products; final products; waste materials; by-products; industrial machinery and fuels, and lubricants, solvents, and detergents that are related to process, manufacturing, or other industrial activities that are exposed to stormwater.

(4) The design engineer shall assess the hydraulic impact on the groundwater table and design the site so as to avoid adverse hydraulic impacts. Potential adverse hydraulic impacts include, but are not limited to, exacerbating a naturally or seasonally high water table so as to cause surficial ponding, flooding of basements, or interference with the proper operation of subsurface sewage disposal systems and other subsurface structures in the vicinity or downgradient of the groundwater recharge area.

c. In order to control stormwater runoff quantity impacts, the design engineer shall, using the assumptions and factors for stormwater runoff calculations at Section 5, complete one of the following:

(Continued on next page)







LEGAL NOTICES

(Continued from page 12)

- for subdivision or site plan approval.
2. The applicant shall demonstrate that the project meets the standards set forth in this ordinance.
3. The applicant shall submit nine (9) copies of the materials listed in the checklist for site development stormwater plans in accordance with Section 9.C of this ordinance.

B. Site Development Stormwater Plan Approval

The applicant's Site Development project shall be reviewed as a part of the subdivision or site plan review process by the municipal board or official from which municipal approval is sought. That municipal board or official shall consult the engineer retained by the Planning and/or Zoning Board (as appropriate) to determine if all of the checklist requirements have been satisfied and to determine if the project meets the standards set forth in this ordinance.

C. Checklist Requirements

The following information shall be required:

1. Topographic Base Map
- The reviewing engineer may require upstream tributary drainage system information as necessary. It is recommended that the topographic base map of the site be submitted which extends a minimum of 200 feet beyond the limits of the proposed development, at a scale of 1"=200' or greater, showing 1-foot contour intervals. The map as appropriate may indicate the following: existing surface water drainage, shorelines, steep slopes, soils, erodible soils, perennial or intermittent streams that drain into or upstream of the Category One waters, wetlands and flood plains along with their appropriate buffer strips, marshlands and other wetlands, pervious or vegetative surfaces, existing man-made structures, roads, bearing and distances of property lines, and significant natural and manmade features not otherwise shown.
2. Environmental Site Analysis
- A written and graphic description of the natural and man-made features of the site and its environs. This description should include a discussion of soil conditions, slopes, wetlands, waterways and vegetation on the site. Particular attention should be given to unique, unusual, or environmentally sensitive features and to those that provide particular opportunities or constraints for development.
3. Project Description and Site Plan(s)
- A map (or maps) at the scale of the topographical base map indicating the location of existing and proposed buildings, roads, parking areas, utilities, structural facilities for stormwater management and sediment control, and other permanent structures. The map(s) shall also clearly show areas where alterations occur in the natural terrain and cover, including lawns and other landscaping, and seasonal high ground water elevations. A written description of the site plan and justification of proposed changes in natural conditions may also be provided.
4. Land Use Planning and Source Control Plan
- This plan shall provide a demonstration of how the goals and standards of Sections 3 through 6 are being met. The focus of this plan shall be to describe how the site is being developed to meet the objective of controlling groundwater recharge, stormwater quality and stormwater quantity problems at the source by land management and source controls whenever possible.
5. Stormwater Management Facilities Map
- The following information, illustrated on a map of the same scale as the topographic base map, shall be included:
- a. Total area to be paved or built upon, proposed surface contours, land area to be occupied by the stormwater management facilities and the type of vegetation thereon, and details of the proposed plan to control and dispose of stormwater.
- b. Details of all stormwater management facility designs, during and after construction, including discharge provisions, discharge capacity for each outlet at different levels of detention and emergency spillway provisions with maximum discharge capacity of each spillway.
6. Calculations
- a. Comprehensive hydrologic and hydraulic design calculations for the pre-development and post-development conditions for the design storms specified in Section 4 of this ordinance.
- b. When the proposed stormwater management control measures (e.g., infiltration basins) depends on the hydrologic properties of soils, then a soils report shall be submitted. The soils report shall be based on onsite boring logs or soil pit profiles. The number and location of required soil borings or soil pits shall be determined based on what is needed to determine the suitability and distribution of soils present at the location of the control measure.
7. Maintenance and Repair Plan
- The design and planning of the stormwater management facility shall meet the maintenance requirements of Section 10.
8. Waiver from Submission Requirements
- The municipal official or board reviewing an application under this ordinance may, in consultation with the municipal engineer, waive submission of any of the requirements in Sections 9.C.1 through 9.C.6 of this ordinance when it can be demonstrated that the information requested is impossible to obtain or it would create a hardship on the applicant to obtain and its absence will not materially affect the review process.

Section 10: Maintenance and Repair

A. Applicability

1. Projects subject to review as in Section 1.C of this ordinance shall comply with the requirements of Sections 10.B and 10.C.

B. General Maintenance

1. The design engineer shall prepare a maintenance plan for the stormwater management measures incorporated into the design of a major development.
2. The maintenance plan shall contain specific preventative maintenance tasks and schedules; cost estimates, including estimated cost of sediment, debris, or trash removal; and the name, address, and telephone number of the person or persons responsible for preventative and corrective maintenance (including replacement). Maintenance guidelines for stormwater management measures are available in the New Jersey Stormwater Best Management Practices Manual. If the maintenance plan identifies a person other than the developer (for example, a public agency or homeowners' association) as having the responsibility for maintenance, the plan shall include documentation of such person's agreement to assume this responsibility, or of the developer's obligation to dedicate a stormwater management facility to such person under an applicable ordinance or regulation.
3. Responsibility for maintenance shall not be assigned or transferred to the owner or tenant of an individual property in a residential development or project, unless such owner or tenant owns or leases the entire residential development or project.
4. If the person responsible for maintenance identified under Section 10.B.2 above is not a public agency, the maintenance plan, and any future revisions based on Section 10.B.7 below shall be recorded upon the deed of record for each property on which the maintenance described in the maintenance plan must be undertaken.
5. Preventative and corrective maintenance shall be performed to maintain the function of the stormwater management measure, including repairs or replacement to the structure; removal of sediment, debris, or trash; restoration of eroded areas; snow and ice removal; fence repair or replacement; restoration of vegetation; and repair or replacement of nonvegetated linings.
6. The person responsible for maintenance identified under Section 10.B.2 above shall maintain a detailed log of all preventative and corrective maintenance for the structural stormwater management measures incorporated into the design of the development, including a record of all inspections and copies of all maintenance-related work orders.
7. The person responsible for maintenance identified under Section 10.B.2 above shall evaluate the effectiveness of the maintenance plan at least once per year and adjust the plan and the deed as needed.
8. The person responsible for maintenance identified under Section 10.B.2 above shall retain and make available, upon request by any public entity with administrative, health, environmental, or safety authority over the site, the maintenance plan and the documentation required by Sections 10.B.6 and 10.B.7 above.
9. The requirements of Sections 10.B.3 and 10.B.4 do not apply to stormwater management facilities that are dedicated to and accepted by the municipality or another governmental agency.
10. In the event that the stormwater management facility becomes a danger

to public safety or public health, or if it is in need of maintenance or repair, the municipality shall so notify the responsible person in writing. Upon receipt of that notice, the responsible person shall have fourteen (14) days to effect maintenance and repair of the facility in a manner that is approved by the municipal engineer or his designee. The municipality, in its discretion, may extend the time allowed for effecting maintenance and repair for good cause. If the responsible person fails or refuses to perform such maintenance and repair, the municipality or County may immediately proceed to do so and shall bill the cost thereof to the responsible person.

B. Nothing in this section shall preclude the municipality in which the major development is located from requiring the posting of a performance or maintenance guarantee in accordance with N.J.S.A. 40:55D-53.

Section 11: Penalties

Any person who erects, constructs, alters, repairs, converts, maintains, or uses any building, structure or land in violation of this ordinance shall be subject to either a fine of not more than \$1,000.00, ninety days in jail, or both, plus any and all costs associated with prosecution.

Section 12: Effective Date

This ordinance shall take effect immediately upon the approval by the county review agency, or sixty (60) days from the receipt of the ordinance by the county review agency if the county review agency should fail to act.

Section 13: Severability

If the provisions of any section, subsection, paragraph, subdivision, or clause of this ordinance shall be judged invalid by a court of competent jurisdiction, such order of judgment shall not affect or invalidate the remainder of any section, subsection, paragraph, subdivision, or clause of this ordinance.

ATTEST:

Vincent Buttiglieri/Municipal Clerk

\$1888.00

May 5, 2006

BOROUGH OF SOUTH PLAINFIELD  
MIDDLESEX COUNTY, NEW JERSEY  
LEGAL NOTICE  
ORDINANCE No. 1730

BE IT RESOLVED BY THE GOVERNING BODY OF THE BOROUGH OF SOUTH PLAINFIELD, MIDDLESEX COUNTY, NEW JERSEY, THAT:

Ordinance #1730 entitled: AN ORDINANCE SUPPLEMENTING THE ZONING ORDINANCE OF THE BOROUGH OF SOUTH PLAINFIELD, 1992, TO PROVIDE ADMINISTRATIVE MECHANISMS FOR THE MAINTENANCE OF AFFORDABLE HOUSING UNITS was adopted on first reading and advertise in The Observer on Friday, May 5, 2006 and a public hearing be scheduled for Tuesday, May 16, 2006 at 8:00 p.m. in the Municipal Building, 2480 Plainfield Avenue, South Plainfield, NJ 07080.

ORDINANCE No. 1730

AN ORDINANCE SUPPLEMENTING THE ZONING ORDINANCE OF THE BOROUGH OF SOUTH PLAINFIELD, 1992, TO PROVIDE ADMINISTRATIVE MECHANISMS FOR THE MAINTENANCE OF AFFORDABLE HOUSING UNITS.  
\$1209 Municipal Housing Liaison.

\$1209.1 Purpose. The purpose of this section is to create the administrative mechanisms needed for the execution of the Borough of South Plainfield's responsibility to assist in the provision of affordable housing pursuant to the Fair Housing Act of 1965.

\$1209.2 Definitions. As used in this section, the following terms shall have the meanings indicated:

"Municipal Housing Liaison" shall mean the employee charged by the borough council with the responsibility for oversight and administration of the affordable housing program for the Borough.

"Administrative Agent" shall mean the entity responsible for administering the affordability controls of some or all units in the affordable housing program for the Borough to ensure that the restricted units under administration are affirmatively marketed and sold or rented, as applicable, only to low- and moderate-income households.

\$1209.3 Establishment of position of Municipal Housing Liaison. There is hereby established the position of Municipal Housing Liaison for the Borough.

\$1209.4 Appointment. Subject to the approval of the Council on Affordable Housing (COAH), the Municipal Housing Liaison shall be appointed by the borough council and may be a full or part time municipal employee.

\$1209.5 The Municipal Housing Liaison shall be responsible for oversight and administration of the affordable housing program for the Borough, including the following responsibilities which may not be contracted out:

- a. Serving as the Borough's primary point of contact for all inquiries from the State, affordable housing providers, Administrative Agents, and interested households;
- b. Monitoring the status of all restricted units in the Borough's Fair Share Plan;
- c. Compiling, verifying, and submitting annual reporting as required by COAH;
- d. Coordinating meetings with affordable housing providers and Administrative Agents, as applicable;
- e. Attending continuing education programs as may be required by COAH;
- f. If applicable, serving as the Administrative Agent for some or all of the restricted units in the Borough as described in §1209.8 below.

\$1209.6 Subject to approval by COAH, the Borough may contract with or authorize a consultant, authority, government or any agency charged by the borough council, which entity shall have the responsibility of administering the affordable housing program of the Borough. If the Borough contracts with another entity to administer all or any part of the affordable housing program, including the affordability controls and affirmative marketing plan, the Municipal Housing Liaison shall supervise the contracting Administrative Agent.

\$1209.7 Compensation. Compensation may be fixed by the borough council at the time of the appointment of the Municipal Housing Liaison.

\$1209.8 Administrative powers and duties assigned to the Municipal Housing Liaison.

a. Affirmative Marketing.

- i. Conducting an outreach process to insure affirmative marketing of affordable housing units in accordance with the affirmative marketing plan of the Borough and the provisions of N.J.A.C. 5:80-28.15.

b. Household Certification.

- i. Soliciting, scheduling, conducting and following up on interviews with interested households;
- ii. Conducting interviews and obtaining sufficient documentation of gross income and assets upon which to base a determination of income eligibility for a low- or moderate-income unit;
- iii. Providing written notification to each applicant as to the determination of eligibility or non-eligibility;
- iv. Requiring that all certified applicants for restricted units execute a certificate substantially in the form, as applicable, of either the ownership or rental certificates set forth in Appendices J and K of N.J.A.C. 5:80-28.1 et seq.;
- v. Creating and maintaining a referral list of eligible applicant households living in the housing region and eligible applicant households with members working in the housing region where the units are located; and
- vi. Employing the random selection process as provided in the affirmative marketing plan of the Borough when referring households for certification to affordable units.

c. Affordability Controls.

- i. Furnishing to attorneys or closing agents forms of deed restrictions and mortgages for recording at the time of conveyance of title of each restricted unit;
- ii. Creating and maintaining a file on each restricted unit for its control period, including the recorded deed with restrictions, recorded mortgage and note, as appropriate;
- iii. Ensuring that the removal of the deed restrictions and cancellation of the mortgage note are effectuated and properly filed with the appropriate county's register of deeds or county clerk's office after the termination of the affordability controls for each restricted unit;
- iv. Communicating with lenders regarding foreclosures; and
- v. Ensuring the issuance of Continuing Certificates of Occupancy or certifications pursuant to N.J.A.C. 5:80-28.10.

d. Resale and rental.

- i. Instituting and maintaining an effective means of communicating information between owners and the Administrative Agent regarding the availability of restricted units for resale or rental; and
- ii. Instituting and maintaining an effective means of communicating information

to low- and moderate-income households regarding the availability of restricted units for resale or rental.

e. Communicating with unit owners.

- i. Reviewing and approving requests from owners of restricted units who wish to take out home equity loans or refinance during the term of their ownership;
- ii. Reviewing and approving requests to increase sales prices from owners of restricted units who wish to make capital improvements to the units that would affect the selling price, such authorizations to be limited to those improvements resulting in additional bedrooms or bathrooms and the cost of central air conditioning systems; and
- iii. Processing requests and making determinations on requests by owners of restricted units for hardship waivers.

f. Enforcement.

- i. Ensure that all restricted units are identified as affordable within the tax assessor's office and any municipal utility authority (MUA) and upon notification to the Administrative Agent of change in billing address, payment delinquency of two consecutive billing cycles, transfer of title, or institution of a writ of foreclosure on all affordable units, notifying all such owners that they must either move back to their unit or sell it;
- ii. Securing from all developers and sponsors of restricted units, at the earliest point of contact in the processing of the project or development, written acknowledgment of the requirement that no restricted unit can be offered, or in any other way committed, to any person, other than a household duly certified to the unit by the Administrative Agent;
- iii. The posting annually in all rental properties, including two-family homes, of a notice as to the maximum permitted rent together with the telephone number of the Administrative Agent where complaints of excess rent can be made;
- iv. Sending annual mailings to all owners of affordable dwelling units, reminding them of the notices and requirements outlined in N.J.A.C. 5:80-28.18(d);
- v. Establishing a program for diverting unlawful rent payments to the municipality's affordable housing trust fund or other appropriate municipal fund approved by the DCA;
- vi. Establishing a rent-to-equity program;
- vii. Creating and publishing a written operating manual, as approved by COAH, setting forth procedures for administering such affordability controls; and
- viii. Providing annual reports to COAH as required.

g. The Administrative Agent shall have authority to take all actions necessary and appropriate to carry out its responsibilities hereunder.

\$1209.9 Severability. If any section, subsection, paragraph, sentence or other part of this Ordinance is adjudged unconstitutional or invalid, such judgment shall not affect or invalidate the remainder of this Ordinance, but shall be confined in its effect to the section, subsection, paragraph, sentence or other part of this Ordinance directly involved in the controversy in which said judgment shall have been rendered and all other provisions of this Ordinance shall remain in full force and effect.

\$1209.10 Inconsistent Ordinances Repealed. All ordinances or parts of ordinances which are inconsistent with the provisions of this ordinance are hereby repealed, but only to the extent of such inconsistencies.

BE IT FURTHER ORDAINED THAT This Ordinance shall take effect immediately upon final adoption and publication in the manner prescribed by law.

STATEMENT OF PURPOSE

The purpose and intent of this Ordinance is to establish administrative mechanisms and create the position of Municipal Housing Liaison for the purpose of administering the Borough of South Plainfield's Affordable Housing program pursuant to the Fair Housing Act.

ATTEST:

Vincent Buttiglieri/Municipal Clerk

\$354.00

May 5, 2006

BOROUGH OF SOUTH PLAINFIELD  
MIDDLESEX COUNTY, NEW JERSEY  
LEGAL NOTICE  
ORDINANCE No. 1732

BE IT RESOLVED BY THE GOVERNING BODY OF THE BOROUGH OF SOUTH PLAINFIELD, MIDDLESEX COUNTY, NEW JERSEY, THAT:

Ordinance #1732 entitled: AN BOND ORDINANCE PROVIDING FOR THE CONCEPTUAL DESIGN FOR NEW MARKET AVENUE AND OTHER ROADWAY IMPROVEMENTS IN THE AMOUNT OF \$240,000 THEREOF AND AUTHORIZING THE ISSUANCE OF \$216,000 BONDS OR NOTES TO FINANCE COST THEREOF was adopted on first reading and advertise in The Observer on Friday, May 5, 2006 and a public hearing be scheduled for Tuesday, May 16, 2006 at 8:00 p.m. in the Municipal Building, 2480 Plainfield Avenue, South Plainfield, NJ 07080.

BOROUGH COUNCIL OF THE BOROUGH OF SOUTH PLAINFIELD  
PUBLIC NOTICE  
BOND ORDINANCE STATEMENT AND SUMMARY

The bond ordinance, the summary terms of which are included herein, was introduced and passed on first reading at a meeting of the Borough Council of the Borough of South Plainfield, in the County of Middlesex, State of New Jersey, on May 2, 2006. It will be further considered for final passage, after a public hearing thereon, at a meeting of the Borough Council to be held at the Municipal Building, Council Chambers, Plainfield Avenue, in said County, on May 16, 2006 at 8:00 p.m.. During the week prior to and up to and including the date of such meeting copies of the full ordinance will be available at no cost and during regular business hours, at the Clerk's office for the members of the general public who shall request the same. The summary of the terms of such bond ordinance follows:

Title: A BOND ORDINANCE PROVIDING FOR PHASE I AND II OF THE NEW MARKET AVENUE EXTENSION AND VARIOUS INTERSECTION IMPROVEMENTS AND RELATED DESIGN AND CONSTRUCTION DOCUMENT PREPARATION, BY AND IN THE BOROUGH OF SOUTH PLAINFIELD, IN THE COUNTY OF MIDDLESEX, STATE OF NEW JERSEY ON THE ("BOROUGH"); APPROPRIATING \$240,000 THEREOF AND AUTHORIZING THE ISSUANCE OF \$228,000 BONDS OR NOTES OF THE BOROUGH TO FINANCE PART OF THE COST THEREOF

Purpose(s): Phase I and II of the extension of New Market Avenue and various intersection improvements on Fulton Street/Fulton Avenue, South Clinton Avenue and New Market Avenue and related design and construction document preparation, in and by the Borough.

Appropriation: \$240,000

Bonds/Notes Authorized: \$228,000

Section 20 Costs: \$240,000

Useful Life: 8 years

ATTEST:

Vincent Buttiglieri/Municipal Clerk

\$65.00

May 5, 2006

BOROUGH OF SOUTH PLAINFIELD  
MIDDLESEX COUNTY, NEW JERSEY  
LEGAL NOTICE  
ORDINANCE No. 1728

BE IT RESOLVED BY THE GOVERNING BODY OF THE BOROUGH OF SOUTH PLAINFIELD, MIDDLESEX COUNTY, NEW JERSEY, THAT:

Ordinance #1728 entitled: AN ORDINANCE REGULATING POLITICAL CONTRIBUTIONS IN THE BOROUGH OF SOUTH PLAINFIELD was presented for adoption after a public hearing was held by the Mayor and Council of the Borough of South Plainfield on Tuesday, May 2, 2006 at 8:00 p.m. in the Municipal Building, 2480 Plainfield Avenue, South Plainfield, NJ 07080.

ATTEST:

Vincent Buttiglieri/Municipal Clerk

\$32.00

May 5, 2006

**Public Notices  
on Line**  
[www.njpublicnotices.com](http://www.njpublicnotices.com)  
Your online source for  
public notices in New Jersey



# Riley Grandparents Celebrate St. Patrick's Day



St. Patrick's Day is a joyous holiday, but when you add grandparents you are sure to have a great time. The kindergarten, first and second grade students at Riley School planned a breakfast along with singing and surprises for their grandparents. The students sang their favorite St. Patrick's

Day tunes while the grandparents munched on bagels, muffins, cookies and fruit.

Eighteen Baskets donated by students were raffled off along with three gift certificates donated by Tarantellas in Clark and a gift certificate donated by Mohn's Florist. A great time was

had by all.

After the breakfast and entertainment, the grandparents were welcomed into the classrooms where there were crafts and crossword puzzles waiting for them to enjoy with their grandchildren. More than 256 grandparents attended this year and it wouldn't have been possible without all the help and donations.

With that I would like to thank Georganne from Mohn's Florist for donating not only the gift certificate, but for donating green fortune cookies, St. Patrick's Day mints, green hot chocolate and the centerpieces as well. Thank you also to the Riley P.T.S.O. parents, starting with Mr. Czech for always saying yes, Francis Ruiz for arranging all of the baskets, Don Ardito for being such a stand up guy and all of his donations, Laura Conrad, Jackie Vill, Joan Rochotte, Shirley Affinito, Cathy Fisher, Kathie Pittenger, Sandy Marcovecchio, Joy Ewing, Linda Kelly, Rick Soden, Debbie Abood, Alisha Hedden, Kelly Dunn, Georganne Larson, Dana Milane, Laura Tirado, Sharon Pisano, Kim Watkins-Rodriguez, Marilyn Matos, Christine Stanakan, Julz McCormick and Deane and Patty DiFrancesco.

—Chairperson for Grandparents Day, Stacey Pace

## policereport

- On April 25 a Plainfield Ave. resident reported that his name and social security number had been used to open a Cablevision account.
- A Piscataway resident reported that the drivers side rear window of their vehicle had been smashed and a leather carrying bag, ADT remote alarm and checkbook had been taken while parked at Home Depot.
- On April 26 Robert Fuller, 43, of Keyport was arrested for no registration, no insurance, driving on a suspended license, fictitious plates and several outstanding warrants.
- Michael D. Sette, 21, of West Orange was arrested for an expired inspection sticker and an outstanding warrant.
- A York Haven, Pa. resident reported the theft of a Movado watch worth \$700 from his hotel room.
- On April 27 Nicholas Jermon Daniels, 33, of New Brunswick was arrested for driving on a suspended license and an outstanding warrant.
- Cecil Vandoren Brack, 46, of Plainfield was arrested for possession of a controlled substance, driving on a suspended license, maintenance of lamps and an outstanding warrant.
- On April 28 Nadezda Telyshev, 53, of Highland Park was arrested at Sears Essentials for shoplifting a

leather wallet worth \$19.

• David J. Marti, 36, of South Plainfield was arrested for driving while intoxicated and careless driving.

• Glenn Moton, 40, of Matawan was arrested for being a fugitive from justice and two outstanding warrants.

• Franklin Elementary School reported that rocks had been thrown through the outside door windows.

• A Sims Pl. resident reported that four planks had been removed from their front wooden fence and thrown on the ground.

• A Kosciusko Ave. resident reported the theft of a hand truck from their backyard.

• On April 29 Derrick E. Johnson, 35, of Rahway was arrested for driving on a suspended license and two outstanding warrants.

• Edward B. Kraszewski, 23, of Edison was arrested for driving while intoxicated, refusal to take a breathalyzer test, reckless driving and failure to wear a seat belt.

• Jose Manuel Cruz, 55, of Union was arrested for driving while intoxicated and careless driving.

• On April 30 Andy Lee Brown, 37, of Plainfield was arrested for driving on a suspended license, speeding and outstanding warrant.

## BUSINESS/PROFESSIONAL/SERVICES

### AIR CONDITIONING/HEATING

**SAVE ON PRE-SEASON SYSTEM**  
**\$500** 12 MONTHS 0% FINANCING AVAILABLE TO QUALIFIED BUYERS, CALL & SAVE!  
 24 HOUR EMERGENCY SERVICE  
**LOU FASANO**  
 HEATING & COOLING, INC.  
 (908) 755-9141  
 FACTORY AUTHORIZED DEALER  
 Carrier

### ARCHITECTS

**Architectural & Engineering Drafting Services, Inc.**  
 Serving Homeowners & Contractors  
**NEW HOMES - ADDITIONS & ALTERATIONS**  
 We will meet your schedule  
 Flexible payment plans available  
 Please contact us at (732) 324-0503

### AUTOBODY

**SULLIVAN'S AUTO BODY**  
 BodyShop Lic. #02313A  
 Hours Mon-Fri 8am-5pm  
 2210 Hamilton Blvd. South Plainfield New Jersey 07080  
 908-757-5100  
 Fax: 908-757-3105

### CLEAN UPS

**ALL PRO CLEAN-UP & DEMOLITION**  
 You name it. we'll remove it!  
 Lowest Rates, Free Estimates  
 Call (732) 448-9884

### CONTRACTORS

**DRESSLER CONTRACTING**  
 908-755-4247  
 KITCHENS, BATHS & FINE CARPENTRY  
 FREE ESTIMATES  
 25 Years Professional Experience

### DRIVEWAYS

**KleenSeal DRIVEWAY SEALING**  
 732-321-3699

### DRIVEWAYS

Chuck Sonion  
 Free Estimates  
**SONION CONCRETE**  
 Sidewalks • Patios • Driveways • Pavers  
 South Plainfield, NJ 07080  
 Fully Insured  
 (908) 754-5969  
 Fax (908) 754-5569

### GUITAR LESSONS

**GUITAR LESSONS**  
 Beginner to Advanced  
 908-822-9702  
 SOUTH PLAINFIELD  
 All Styles  
 Kenny Campbell  
 www.kennymusician.com

### GUITAR LESSONS

**GUITAR LESSONS In South Plainfield**  
 • Acoustic • Electric • Fingerpicking  
 Beginner Specialist  
 Open Tunings  
 6 & 12 String Guitars  
 755-6882

### HEALTH & WELLNESS

**Hua Kang Health Center**  
 Massage, Acupressure, Reflexology  
 Acupuncture • Chinese Herbs • Facial  
 Licensed Chinese massage therapists and acupuncturists provide experienced Chinese-style services using traditional Chinese medicine methods. Effective in treatment of various pains, symptoms and body needs.  
 Appointments/walk-ins welcome. Open 7 days/week, 9:30am-9pm  
 Gift Certificates and Bonus Program available.  
 We accept credit cards and health insurance.  
 1763 Lincoln Highway (Rt. 27) Edison • 732-819-0058  
 126 Plainfield Ave. Edison • 732-572-5599  
 275 Rt. 18 South, East Brunswick • 732-967-1300  
 Treat yourself at our three locations. Your satisfaction guaranteed.

### JUNK REMOVAL

**JUNK REMOVAL WE TAKE ANYTHING!**  
 Any Item Removed!  
**A.J.'S JUNK REMOVAL**  
 (908) 229-4831

### PARTS & EQUIPMENT

**PM PARTS & EQUIPMENT**  
 Parts-Sales-Service-Rentals  
 WE ARE A FULL SERVICE DEALER!  
 CATERING TO: CONTRACTORS, LANDSCAPERS, HOMEOWNERS  
 PAUL BILICH, OWNER  
 250 Mack Place, South Plainfield  
 908-822-9828  
 (908-756-7096 fax)

### PET ADOPTION

**Have A Heart! Adopt A Starkitty & Learn About Animal Communication Too!**  
 7 Kittens & 3 Adults have been rescued off the streets. Give them a SECOND CHANCE! Great for kids! Ready To Go NOW! (We're local!)  
 Call Toll Free 888-842-1112 or Visit Us At www.starkittys.com

### PLUMBER

**Professional Plumbing & Heating Inc.**  
 (908) 561-1941  
 South Plainfield, NJ  
 FRANK MCCARTHY  
 License #8741



**CLASSIFIED AD RATES:**

\$15 for 3 lines, \$1 for each additional line.  
10% discount for 4 insertions.

Deadline: Monday 5pm

# Classifieds

**HELP WANTED**

**COMPUTER PROGRAMMER**  
(Cranbury, NJ) Assist with analyzing requirements to determine feasibility within time & cost constraints. Master's Deg. or equiv. in Computer Information Systems & 6 months of experience reqd. 40 hpw. Mail resume to V Group, Inc., Attn: HR, 379 Princeton-Hightstown Rd, Building 2, Suite 221, Cranbury, NJ 08512.

**CUSTOMER SERVICE/CLERICAL**  
-20 hours per week flex. Paid vacation & holidays. Some computer experience preferred. (732) 752-7778 or fax resume to (732) 752-0078.

**MO'S SALON AND THE BRUSH STOP** need two experienced operators. Call Mike (908) 715-1694.

**P/T ADMIN/SALES ASSISTANT** for South Plainfield loan/brokerage. Must be friendly, positive attitude and be an organized, goal-oriented, self-starter. Students, moms or retirees welcome. Fax resume or letter of interest with salary requirement to John at (908) 754-6750.

**PERMANENT PT RECEPTIONIST** for So. Plainfield chiropractic office. Mon.-Wed.-Fri. 3:30-7 p.m. Must be mature, people/service oriented, and able to multi-task. Computer skills helpful but not necessary. Call (908) 755-1117.

**ROSEDALE TRANSPORT INC.** Drivers Team & Solo needed to run OTR, Solo home every 3 to 5 days. Students welcome. Our drivers enjoy an excellent pay & benefit package. If you have 1 year experience or 6 months w/accredited School Diploma, clean driving record. 1-800-221-3919.

**FOR SALE**

**1999 26-INCH COLOR TV, STEREO**/cable ready, brand new. \$175. Call (908) 561-8828.

**2000 KEYSTONE MONTANA TRAVEL** trailer. Less than 1,000 towing miles. Exc. cond. Lots of extras. (908) 754-0544.

**ETHAN ALLEN 71" SLEEPER**/sofa, exc. cond. light brown tatter-sall pattern, \$950. (908) 756-8122.

**HOME FURNISHINGS FOR SALE**

**MATTRESS-NEW PILLOW TOP SETS**, new in plastic with mfg. warranty. **Queen \$135 King \$195.** (732) 259-6690.

**BEDROOM SET-SLEIGH BED, DRESSER** w/mirror, chest & nite stand. New in box, value \$2100, sell \$795, can deliver. (732) 259-6690.

**BEDROOM SET-CHERRYWOOD SLEIGH** bed, dresser, mirror chest & nite stands. Retail \$3000, sacrifice \$1275, new in box. (732) 259-6690.

**BED-NAME BRAND Q MATTRESS SET** W/10 year warranty, still in sealed plastic. Value \$1200 sell \$450, can deliver. (732) 259-6690.

**RENT TO OWN**

**RENT TO OWN NICE 3 BEDROOM** home available in South Plainfield. Call Ray (908) 753-7388.

**CHILDCARE AVAILABLE**

**LOVING MOTHER WILL CARE** for your child in her So. Plfd home. Call Alyssa at (908) 222-9544.

**HOUSECLEANING**

**SPRING HAS SPRUNG. GET YOUR** cleaning done! \$10/room. Ref avail. Call Teri's Cleaning. (908) 222-1441.

**HOME/OFFICE CLEANING**

**TOTAL CLEANING SYSTEMS** Office cleaning, new home construction, houses, condos, townhomes. Free estimate. Anita (732) 877-8170. Kris (732) 522-4841. Faith (732) 939-5383.

**TENNIS PARTNER WANTED**

**TENNIS PLAYER NEEDED**-Just moved to South Plainfield, looking for single tennis player, level 3+, flexible hours, available weekends & weekdays. Call (908) 769-5938.

Find it. Use it. Classifieds!  
Buy it. Sell it! 908-668-0010

## BUSINESS/PROFESSIONAL

To advertise your business in the Business & Professional Directory call 908-668-0010.

**AUTOBODY**

**R&C AUTO BODY**  
Family Owned & Operated  
Expert Color Matching  
24 Hour Towing  
All Work Fully Guaranteed  
COLLISION SPECIALISTS  
908-757-1933  
3330 Park Ave., South Plainfield

**CARPENTER**

**DAN SPIRO Carpenter**  
References Furnished Upon Request  
• Additions  
• Basements  
• Decks  
• Doors  
• Windows  
• Kitchens  
• Bathrooms  
Free Estimates  
(732) 910-0942

**CHIROPRACTIC**

Dr. Patrick M. **Aiello** D.C.  
E-Mail: SoPlfdDoc@aol.com  
The House-Call Doc  
"We Come To You"  
Phone: (908) 581-3610

**COMPUTERS**

Concerned About Computer Virus Protection? Home Security?  
For advice and installation, call Stan Wilkinson at **ST Computers**  
908-769-0709  
• New Computers/Upgrades  
• Hardware/Software Installations  
• In Home Service  
• Some Used Computers Available  
Cell: 732-423-3504  
Email: stcomputers@comcast.net

**CONTRACTORS**

**BUILDER & GENERAL CONTRACTOR**  
NJ DCALIC #019771  
Since 1981  
**Lordina Builders**  
908-753-3850  
ADDITIONS • KITCHENS  
BATHROOMS  
Office Renovations  
FREE ESTIMATES

**ELECTRICAL CONTRACTOR**

**On Time Electrical Contractor LLC**  
Residential • Industrial • Commercial  
No Job Too Small  
908-451-3313  
On Call 24 hrs.  
Fully Insured & Bonded NJ  
BILL RITCHEY Lic #8854

**FURNITURE REPAIRS**

**FURNITURE MEDIC**  
"the prescription for damaged furniture"  
**Precision Furniture Repairs On-Site**  
Scratches • Gouges • Pet Damage  
Water Marks • Burns  
Structural Repairs • Broken Joints  
Antique Restoration  
Kitchen Cabinets Refinished  
And MUCH MORE!  
(908) 755-8440

**HANDYMAN**

**LEND A HAND HANDYMAN**  
PAINTING/WALLPAPERING  
• Room or rooms that need fresh painting?  
• Redecorating with decorative wallcovering?  
**MINOR HOME REPAIR & CLEANING**  
• Have a leaky faucet or noisy toilet?  
• Tub or shower that needs recaulking?  
• Windows that need washing?  
• Drapery or pictures that need hanging?  
CALL BOB 908-812-8496  
FREE AND PROMPT ESTIMATES,  
REASONABLE RATES, VERY RELIABLE  
REFERENCES UPON REQUEST

**GARAGE DOORS**

**Garage Doors with Style**  
Risoli Door Corporation  
SOUTH PLAINFIELD, NJ 07080 800-801-4525  
WWW.RISOLIDOOR.COM

**KITCHENS**

**DMP**  
David M. Pelech  
Wholesale Kitchens & Bath  
Visit our showroom at  
421 Cleveland Ave. Plainfield  
(908) 757-0300  
Fax: (908) 754-4293  
www.dmpkitchens.com  
3% SALES TAX

**MULCH/TOP SOIL/STONE**

Call **KLK Trucking** for:  
Top Soil, Mulch, Sand, Infield Mix, Decorative & Crushed Stone  
Sanding • Salting • Snowplowing  
Pick up or Deliv., Mon. thru Sat  
908-757-4434  
265 Ryan Street  
South Plainfield

**PAINTING**

**PREMIER PAINTING SERVICES**  
Interior/Exterior  
Staining • Powerwashing  
FREE ESTIMATES  
Call 732-690-9046

**PAVING/MASONRY**

**MARK L. DiFRANCESCO**  
PAVING • MASONRY  
Free Estimates  
Driveways • Parking Lots • Seal Coating • Steps • Walkways • Patios  
Retaining Walls • Pavers • Wallstone • Slate • Bluestone • Excavating  
Foundations • Block Work • Cultured Stone • Drainage • Waterproofing  
3RD GENERATION IN BUSINESS  
908-668-8434

**POOL SALES/SERVICE**

(908) 756-3120  
Schedule your pool opening now!  
**McCarthy Contractors**  
Pools • Ponds • Water Features  
SALES AND SERVICE  
Blaise McCarthy  
Member of NSPA  
20 Years Experience  
Fully Licensed & Insured • SOUTH PLAINFIELD

**ROOFING**

**J.T. PENYAK ROOFING CO.**  
COMMERCIAL/INDUSTRIAL  
RESIDENTIAL  
908-753-4222  
FAX 908-753-4763  
124 CAMDEN AVE.  
SO. PLAINFIELD, NJ 07080

**TRUCK SALES**

**CAMBRIA, GMC TRUCK CENTER**  
1-800-899-5226 X-110  
NEW 2006 GMC W4500 CREW CAB  
ASK FOR TONY-FINANCING AVAILABLE

**PARTY**

**ABBOTT'S AIRBORNE ANTICS**  
Entertainment for kid's parties  
Juggling  
CLUBS, BALLS, KNIVES  
FLAMING TORCHES!  
costumed performers-pirates-knights  
sword demonstrations  
acrobatics  
Christopher Abbott  
908-922-3571  
almstfamouslyplyrs@aol.com



## Obituaries

### Myrtle Miller, 97

Myrtle Miller died on Sunday, April 16 at Monroe Ville in Monroe.

Myrtle was born in Chicago, Ill. to David and Bertha Suttie and grew up in Glen Ellyn, Ill. She attended Wheaton College and graduated from Augustana Nursing School in 1934 with an RN degree.

After graduation she moved to New York City and worked in New York Hospital. She spent summers working on Staten Island with critically ill children at Seaside Hospital, and later Myrtle worked at Richmond Memorial Hospital.

While on Staten Island she met Arthur Miller and they were married on Sept. 4, 1938. She and her husband were married for 52 years, before he passed away in 1990. In addition, Myrtle was the church organist and Sunday School teacher at New Dorp Baptist church for many years.

She is survived by three daughters, Judy Holum of Loveland, Colo., Lynn Miller and Doris Sepkowski, both of South Plainfield; three grand-

daughters and two great-grandsons. Funeral services were held at the McCriskin Home For Funerals.

### Josephine "Jo" (Pezzano) Pecora, 91

Josephine "Jo" (Pezzano) Pecora died on Thursday, April 27 at JFK Hartwyck at Edison Estates Nursing Convalescent and Rehabilitation Center in Edison.

Mrs. Pecora was born in Newark, where she grew up. She moved to South Plainfield and lived here for 25 years. In 1977 she moved to Beachwood. She has resided in Kendall Park since 1986.

She had worked for 15 years in quality control for RCA, formerly in Somerville. She retired in 1971.

Jo was a member of the South Brunswick Senior Citizens and was also an avid line dancer.

Her husband, Samuel Pecora, died in 1965.

Surviving are daughter and son-in-law, Jo Ann and Michael Faulkner of Piscataway; four grandchildren, Ken-

neth Faulkner-Alexander, Tara Catalina, Michelle Lunsford and Stephen Faulkner and two great-grandsons.

Funeral services were held at the McCriskin Home For Funerals.

### John DeNicola Sr., 74

John DeNicola, Sr. died on Sunday, April 30 at Robert Wood Johnson University Medical Center in New Brunswick.

Born in Hoboken, Mr. DeNicola grew up in Jersey City and had resided in Dunellen for 24 years before moving to Toms River, then to Middlesex two years ago.

Mr. DeNicola was employed as a butcher for most of his life.

A veteran of the Korean War, John served in the Army with the 24th Infantry Division.

He is predeceased by his twin brother, Peter.

Surviving are his wife, Agnes; two daughters, Patricia Margolis and husband Teddy of Middlesex and Kelly Loffredo and husband Vinny of Martinsville; a son, John DeNicola Jr. and his wife Debbie of Westfield; two sis-

ters, Jeanette Colman and Lillian Marino and six grandchildren, Jenna, Georgie, Brett, Brittany, Anthony and Riley.

Funeral services were held at the McCriskin Home For Funerals.

### Nannette C. (Eddy) Gold, 57

Nannette C. (Eddy) Gold died on Monday, April 24 at her home after a long battle with Lou Gehrig's Disease.

Born and raised in Battle Creek, Mich., she had resided in Brooklyn Heights and Forest Hills, NY before settling in South Plainfield 20 years ago.

She graduated from Springfield High School in 1966 and got her associates degree in applied science at Kellogg Community College in 1969.

Nann had been employed as a registered nurse at Community Hospital and the Battle Creek Sanitarium before moving to the New York/New Jersey area in 1979, where she worked at LaGuardia Hospital and New York

University Medical Center. She then retired from nursing to devote her time to her family, her community and her faith.

She had a true love and calling for being a volunteer. As a very religious person, Nann taught CCD, assisted in preparing meals for the priests, helped in the school cafeteria and ran the Campbell Soup label drives, all for her church, Sacred Heart RC Church in South Plainfield. Nannette also aided the nuns of Mount Saint Mary's in Watchung. Her most recent job was working as a pharmacy tech at Drug Fair in South Plainfield.

She also was a local girl scout leader for her daughters and enjoyed making crafts.

Her parents, Junior and Mariam Eddy, have both predeceased her.

Surviving are her husband, Bruce E. Gold; two daughters, Bethann and Jennifer, both of South Plainfield, and a brother and his family, David and Amy Eddy and their three children, Maryanne, Andrew and Tyler all of Battle Creek, Michigan.

Funeral services were held at the McCriskin Home For Funerals.

## LEGAL NOTICES

### BOROUGH OF SOUTH PLAINFIELD MIDDLESEX COUNTY, NEW JERSEY

#### LEGAL NOTICE

April 28, 2006

Public Notice is hereby given that the following action was taken by the South Plainfield Planning Board at its meeting held on April 25, 2006:

A. Case #692/V/S—Joseph and Theresa Fasano, Block 308; Lot 16; 1273 New Market Avenue. The applicant's request for 5 waivers, 4 bulk variances and preliminary site plan approval was hereby GRANTED subject to additional voluntary conditions.

B. Case #698/S—National Realty, Block 528; Lots 46.27 and 47.08; Stilton Road. The applicant's request for a variance as to the number of on site parking spaces and amended preliminary and final site plan for Target-White Castle Connecting Drive was hereby GRANTED subject to additional voluntary conditions.

Respectfully Submitted,  
Mary Beth Khidre  
Secretary/Planning Board

\$30.40

May 5, 2006

### BOROUGH OF SOUTH PLAINFIELD MIDDLESEX COUNTY, NEW JERSEY

#### LEGAL NOTICE

April 28, 2006

Public Notice is hereby given that the following action was taken by the South Plainfield Board of Adjustment at its meeting held on April 27, 2006:

A. Case #17-06—Mark & Lauren Giermanski, Block 172; Lot 10; 151 Florence Place. The applicant's request for a westerly side yard setback variance to construct a (2) story addition was hereby GRANTED subject to additional voluntary conditions.

B. Case #16-06—John & Kathy Tanzola, Block 201; Lot 3; 912 Maple Avenue. The applicant's request for an expansion of a non-conforming use and a front yard setback variance from Ten Eyck Street in order to construct a 2nd floor deck was hereby GRANTED subject to additional voluntary conditions.

Respectfully Submitted,  
Mary Beth Khidre  
Secretary/Zoning Board of Adjustment

\$28.50

May 5, 2006

(908) 561-8000



## HOME FOR FUNERALS, LLC

2425 Plainfield Ave., South Plainfield, NJ 07080

"An Independent, Family Owned & Operated Funeral Home"

PRE ARRANGEMENTS • S/S MEDICAID PROTECTION • CREMATION SERVICES

Richard W. McCriskin, Mgr., N.J. Lic. No. 3147  
William C. McCriskin, N.J. Lic. No. 3382

James A. Gustafson, N.J. Lic. No. 4205  
Richard W. McCriskin II, N.J. Lic. No. 4564



www.mccriskinfuneralhome.com

Fax (908) 561-6744

## BUSINESS/PROFESSIONAL/SERVICES

## REAL ESTATE

### The Hillside Cemetery Association

1401 WOODLAND AVE., P.O. BOX 360

SCOTCH PLAINS, NJ 07076

908.756.1729 PHONE 908.756.2484 FAX

For additional information, please fill out form below and mail or fax to us

NAME \_\_\_\_\_

ADDRESS \_\_\_\_\_

CITY, STATE, ZIP \_\_\_\_\_

We are a non-profit, non-sectarian cemetery.  
Please visit our new website [www.hillsidecemetery.com](http://www.hillsidecemetery.com)



**SOUTH PLAINFIELD  
FUNERAL HOME**  
2456 Plainfield Ave., So. Plainfield  
908-756-2800

Independently owned & operated since 1949  
Advanced Planning • Dignified Burial & Cremation Options  
Services tailored to Your Needs • Monument & Marker Assistance



Tamara Hawbaker, Mgr. NJ Lic No 4577  
Lisa LoRico Sharp NJ Lic No 3710  
Thomas Adamecs NJ Lic No 4319

Flexible  
Payment  
Options

Subscribe anytime! Email your request to [spobserver@comcast.net](mailto:spobserver@comcast.net)

### ERA Suburb Realty Agency

**LORI TANGORRA**  
ABR, REALTOR®  
Sales Associate

Office:  
(908) 322-4434 x164  
Fax: (908) 322-2352  
Cell: (732) 742-5692  
E-Mail: [Lori.Tangorra@ERA.com](mailto:Lori.Tangorra@ERA.com)



1773 E. 2nd Street  
Scotch Plains, NJ 07076

### ERA Suburb Realty Agency

1773 E. Second St., Scotch Plains, NJ 07076



**Gina Zarra**

REALTOR®  
Sales Associate  
Million Dollar Club

South Plainfield  
Resident for  
35 Years

Your Neighbor—  
Your Friend

A Realtor You Can  
Trust & Depend On

OFFICE:  
(908) 322-4434  
Cell: (908) 715-2876  
E-Mail: [gizarras@aol.com](mailto:gizarras@aol.com)

The Team  
That Works  
We Get  
Results!

**Century 21  
Moretti Realty**



**Andrea & Jesse Lacerda**  
"The Lacerda Team"

Give Us a Call &  
We'll Prove It!  
(908) 755-5300  
Ext. 302

Cell (908) 578-1166  
TOP AGENT FOR  
OVER 10 YEARS

Email: [LacerdaA@MorettiRealty.com](mailto:LacerdaA@MorettiRealty.com)  
[www.LacerdaTeam.com](http://www.LacerdaTeam.com)

225 Maple Ave., South Plainfield, NJ 07080



### Prudential New Jersey Properties



**John "Jack" Pedersen**  
REALTOR-ASSOCIATE  
3 Amboy Ave., Metuchen, NJ 08840  
Bus (732) 494-7677  
Cell 877-640-0060  
Email: [JackPedersen@PruNewJersey.com](mailto:JackPedersen@PruNewJersey.com)

An Independently Owned & Operated Member of The Prudential Real Estate Affiliates, Inc.

### Century 21 Moretti Realty

Put your trust in a Realtor  
who can get the most  
money through  
knowledge & experience!



**Evelyn  
Sherwood**  
Broker-  
Associate

Over 28 years  
experience in  
South Plainfield  
& vicinity  
Office: (908) 755-5051 Ext. 313  
(908) 753-1346 Evenings  
Email: [shenwoode@moretti Realty.com](mailto:shenwoode@moretti Realty.com)

225 Maple Ave., South Plainfield



### Prudential

**Rose REALTORS®**  
Rose Marie Pelton  
REALTOR-ASSOCIATE  
South Plainfield Resident  
For Over 39 Years

908-753-4450 X302  
Toll Free 800 370-2424  
Fax 908-753-0136  
[RosePelton@att.net](mailto:RosePelton@att.net)



Rose Marie Pelton

Prudential Rose REALTORS®

659 Mountain Boulevard, Watchung, NJ 07089



### Moretti Realty



Business:  
(908) 755-5300  
Ext. 312

Evenings:  
(908) 756-5335

Email:  
[platej@moretti Realty.com](mailto:platej@moretti Realty.com)

**JOANN PLATE**  
Realtor Associate

225 Maple Ave., South Plainfield, NJ 07080



### Moretti Realty



"Nobody knows  
South Plainfield  
like Joe Diegnan."

Business:  
(908) 755-5300 x315  
Evening:  
(908) 756-9123

Joseph  
Diegnan

225 Maple Ave., South Plainfield, NJ 07080