

Subscribe to the Observer 24 hours a day—email your request to spobserver@comcast.net

The Observer office will be open next Thursday, April 14, between 9am-2pm and will be closed Good Friday.

South Plainfield Observer

VOL. 9, NO. 31

50 CENTS

APRIL 7, 2006

BOE Supports Budget, Split on Fate of Sports

By Libby Barsky

On Tuesday March 28, a divided Board of Education voted to officially adopt the \$50,475,623-2006/2007 school budget with \$40,171,431 to be raised by taxes of \$2.73 per \$100 of assessed valuation. For a home assessed at \$117,000, the additional property tax will be \$285.

There is also a second question on the ballot. The public is being asked to vote on raising an additional \$175,000 to be used for capital projects, including the installation of two new sections of bleachers and divider curtains—one for the middle school and one for the high school.

The vote was not unanimous. Board members Sue Peck and Jeff Seider, citing "philosophical differences," voted not to adopt the budget as it was formulated because it included the continuance of the Middle School sports program while six teacher and counselor positions were cut—two, world language teachers, two computer teachers and two SAC's (student assistance counselors). An administrative position and secretary were also eliminated—the assistant superintendent of schools and the curriculum director will be merged into one position.

"It's a choice between education and coaches," said Peck in renouncing her previous position in approving the tentative budget at the beginning of the month. At that session, Seider proposed ending the sports program and place two teaching positions back

in the budget.

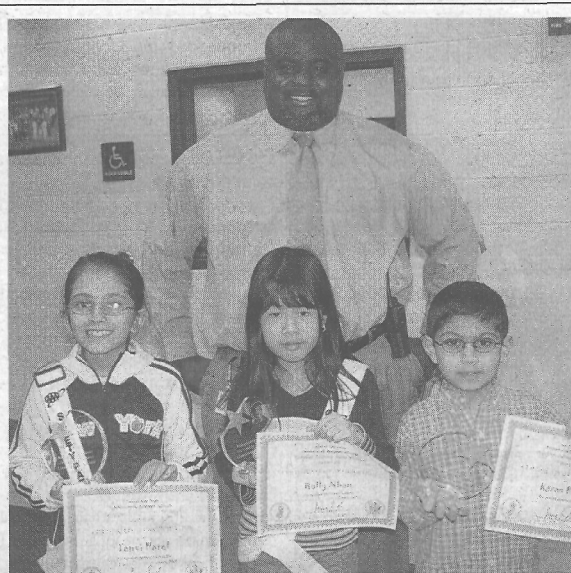
At the work session on March 7, the issue to include the Middle School sports program in the budget came up again. Board members Pio Pennisi and Patrick Kelly were concerned the PAL resources would not be enlarged by the borough to provide a similar sports program. Superintendent of Schools Dr. Rosado asked board members to compromise so the tentative budget could be approved by the Board to show unanimously support. A unanimous compromise was reached to place the sports program back in the budget and make eight cuts in staff at the time.

"We worked so hard to have consensus—it's unfair to the group not to have these people fulfill their responsibilities," said Board Vice President Dan Smith. He charged Seider with a lack of integrity for not sticking to the compromise. Angry, Smith said he would resign from the board after the meeting. (There is only one meeting remaining before the election for School Board members and on the budget on April 18.)

"I had enough, but I was disappointed that I let my emotions get the better of me," said Smith later.

Peck and Seider maintain that despite the philosophical difference, they both support the budget.

Dr. Rosado noted that if the budget goes down, the budget will go to the Borough Council where there will be even further cuts made which will affect all the programs in the district.



After an assembly held at Roosevelt Elementary School by the State of NJ Division of the Ratepayers Advocate, students were asked to write an essay about energy conservation. Three students were chosen by the Ratepayers Advocates and won a certificate and a Seema M. Singh Award. Pictured above are school principal, Charles Ford, and the winners with their awards (L to R), Karan Patel, first place; Tanvi Patel, third place; and Holly Nahn, second place.

Resident Indicted In Fake Drivers License Scam

Trenton Motor Vehicle Commission clerk Tyrone (a.k.a. Tymeek) G. Baxter, 39, of South Plainfield was indicted on charges of making fake licenses for himself and others for profit. Also indicted was fellow co-worker and accomplice Betty Jean Dunkins, 42, of Trenton. Both were charged with official misconduct, forgery, identity theft, tampering with public records and other crimes.

Prosecutors say that Baxter used photos from the MVC computers that were similar to his clients and sold them for up to \$500 a piece. The couple are currently suspended without pay and are expected to appear in court shortly. Baxter faces at least 20 years in prison with \$350,000 in penalties. Dunkins could spend at least 10 years in prison with \$150,000 in penalties.

Ramada Inn Gunman Sentenced

A Plainfield man who robbed a Ramada Inn clerk at gunpoint in March 2005 was sentenced last week to 18 years in prison.

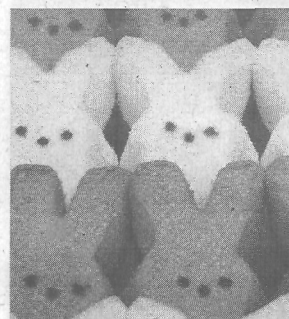
Michael Sutton, 33, and accomplice Jermaine Goines, 35, also of Plainfield, took \$1,113 from the cash register and \$13 from the clerk's pocket. Sutton was given credit for serving almost a years time in the Middlesex County Adult Correction Center and will be eligible for parole in 15 years. Goines plead guilty and is awaiting sentencing and faces up to 10 years in prison.

Easter Egg Hunt Saturday

The South Plainfield Recreation Department will hold the annual Easter Egg Hunt on Saturday, April 8 at 1 p.m. behind the PAL Building. All residents between the ages of one and 10 are welcome to come join in the fun.

Please bring a bag for the eggs you will collect. The Easter Bunny will be making an appearance; please be sure to bring your own camera if you would like a picture taken with him.

For more information, please visit us at www.sprecreation.com.



PTO Offers Public Chance to Meet Candidates for BOE Election

Every year, the Parent Teachers Organization holds a candidates' night for the public to learn more about the candidates who are running for South Plainfield School Board. On March 30, approximately 30 people came out to Roosevelt School to meet the candidates, ask questions, listen and evaluate their responses.

There are four candidates running for three seats on the board. Ernie "Jim" Giannakis, Randi Gregorio, Donna Rann and John Markham. Only Markham has prior experience as a board member, having served for nine years from 1979 to 1988 in that capacity.

Randi Gregorio, a 30-year resident of the borough, is a graduate of South Plainfield High School, and for the past 10 years has been the business manager for doctors Brian and Thomas Cassidy with offices on Park Ave. in Edison. Her daughter

is an eighth grade student at the Middle School.

Jim Giannakis, a 20 year resident of the borough, has three children. Nicolas and Jaime are South Plainfield High School students and Jenny is three. He is the owner of Shefields, a restaurant providing breakfast, lunch and catering, located on Rt. 22 in Mountainside.

Donna Rann is a parent of two children who are students in South Plainfield High School. She is on the producing board of the South Plainfield Summer Drama Workshop. She is the chief executive, product development, for Parimatex Bedding in Dayton.

Due to prior commitments—Rann had a business meeting in New York City and Markham was on vacation—only two of the four candidates, Randi Gregorio and Jim Giannakis, were present to introduce themselves

and respond to questions.

"I'm running because we need new faces on the board and fresh ideas," said Gregorio in her introductory remarks.

"Communication to parents in general is lacking. What ideas do you have to improve communication at all grade levels?" was the first question.

Gregorio suggested other web based lines to teachers. "They have our e-mail addresses, but I've never gotten an e-mail from a teacher. We should have a homework board and also learn what activities are going on in school."

Giannakis suggested making time for more meetings face to face with teachers, in addition to the e-mail notices.

Most questions centered on the school budget and how it was formulated. (Continued on page 16)



Middle School March Students of the Month are (L to R) Kyle Kaczka-Thunder, Parin Mody-Lightning, Connor Gillis-Cyclone, Brigitte Kelly-Avalanche, Ryan Hutchison-Monsoon and Andy Muhlgeier-Tsunami with school principal, Steve Novak.

CURBSIDE PICKUPS CONTINUE....

Curbside bulk pickups will continue throughout the month of April. Residents are asked to place their items at their curb on the Sunday of the week they are going to be collected. Collection schedule is as follows:

Week of April 3...Section 1.....Place items at curb on Sunday, April 2
Week of April 10...Section 2.....Place items at curb on Sunday, April 9
Week of April 17...Section 3.....Place items at curb on Sunday, April 16
Week of April 24...Sections 4 & 5...Place items at curb on Sunday, April 23

If you are unsure of your section, please refer to last week's paper or contact the Municipal Clerk's office at 908-226-7606.

MARK YOUR CALENDARS

council meetings

Meets twice a month on the first and third Tuesday

Borough Hall Council Chambers • Questions? 908-226-7605

Date	Agenda Meeting	Public Meeting
April 17	7:00 p.m.	8:00 p.m. (Monday)
All meetings of the Governing Body are held in accordance with New Jersey Open Public Meetings Act (NJS 10:4-6 et seq) in the Council Chambers at 2480 Plainfield Avenue.		

planning board

Meets second and fourth Tuesday of the month, *except where noted.

Borough Hall Council Chambers, 7 p.m. • Questions? 908-226-7641

April 11, April 25, May 9, May 23, June 13, June 27,
July 18*, Aug. 15*, Aug. 29*, Sept. 12, Sept. 26, Oct. 10, Oct. 24,
Nov. 28, Dec. 12 and Dec. 26.

zoning board of adjustment

Meets second and fourth Thursday of the month, *except where noted.

Borough Hall Council Chambers, 8 p.m. • Questions? 908-226-7641

April 13, April 27, May 11, May 25, June 8, June 22, July 13, July 27, Aug. 10, Aug. 24,
Sept. 14, Sept. 28, Oct. 12, Oct. 26, Nov. 30* and Dec. 14.

board of education meetings

Roosevelt Administration Gymnasium on Jackson Ave. unless otherwise noted

Com. of the Whole, Tuesdays 7 p.m.

Regular Meeting Tuesdays 8 p.m. April 4.

taxpayers advisory group

The Taxpayers Advisory Group (TAG) meets the fourth Tuesday of every month at Borough Hall, 2480 Plainfield Ave. at 7 p.m. Questions? 908-769-0786.

site plans sub-committee

Meets once a month on the third Tuesday of the month, 8 p.m.

April 18, May 16, June 20, July 18, August 15
Sept. 19, Oct. 17, Nov. 21 and Dec. 19.

recreation commission

Meets once a month on the second Tuesday of the month, except July and August

PAL Building, Maple Ave. 7 p.m. • Questions? 908-226-7716

April 11, May 23*, June 13, July and Aug.

No scheduled meetings, Sept. 12, Oct. 10, Nov. 14 and Dec. 12.

environmental commission

Meets once a month (second Wednesday)

Borough Hall Conference Room, 8 p.m. • Questions? 908-226-7621

April 12, May 10, June 14, July 12, Aug. 9, Sept. 13

Oct. 11, Nov. 8, Dec. 13 and Jan. 10.

business advisory group

Meets once a month (first Wednesday)

Borough Hall Council Chambers, 5 p.m. • Questions? 908-757-8100

traffic safety advisory commission

Meets once a month (fourth Wednesday) at 7 p.m.

in the Conference Room, Borough Hall (No Meeting in August)

board of education curriculum/technology meetings

Meets once a month on Mondays at 8 p.m. in the 2nd floor conference room at Roosevelt Administration Building on Jackson Ave.

Get all the news you need about South Plainfield in the Observer.
To subscribe, call 908-668-0010.

South Plainfield Observer

The South Plainfield Observer is published every Friday

G&G Graphics, Inc.
1110 Hamilton Blvd. Suite 1B
South Plainfield, NJ 07080

(908) 668-0010 • FAX (908) 668-8819

NANCY GRENNIER
Publisher/Editor-in-Chief

Web page:
www.sposerver.com
(under construction)
For subscriptions, advertising or
information, call (908) 668-0010.

The publisher is not responsible for typographical errors.

The South Plainfield Observer (U.S.P.S. 018253) is published weekly, except Thanksgiving week, by G&G Graphics Inc. 1110 Hamilton Blvd. Suite 1B, South Plainfield, NJ 07080-2004. Second class postage paid at South Plainfield, New Jersey 07080-9998. POSTMASTER: Forward change of address orders to G&G Graphics Inc. 1110 Hamilton Blvd. Suite 1B, South Plainfield, NJ 07080-2004. Subscription rates \$25 per year in South Plainfield; \$30 per year out of town. To subscribe: 908-668-0010.

SUBMIT YOUR ARTICLES

We look forward to hearing from all of you and encourage you to send in your stories and photos. The South Plainfield Observer is your paper. Please let us know what you would like to see in it.

To get an article published in the South Plainfield Observer:

1. Type (double spaced) the article you wish published.
2. Mail, fax or drop it at: South Plainfield Observer, Editorial Department, 1110 Hamilton Blvd., Suite 1B, South Plainfield, NJ 07080 or drop it in the box at Mohr's Flowers on Plainfield Ave., fax us at (908) 668-8819 or e-mail us at sposerver@comcast.net. Include your name, address, telephone number.

LETTERS TO THE EDITOR

Letters may be submitted by mail to South Plainfield Observer, Editorial Dept., 1110 Hamilton Blvd. Suite 1B, South Plainfield, NJ 07080, by email: sposerver@comcast.net or fax 908-668-8819. Letters should not exceed 200 words. We reserve the right to edit for clarity or length. It is the editor's discretion to limit the number of letters submitted by one individual on the same subject. The opinions expressed in "Letters" do not necessarily reflect the opinion of the Observer. All letters must be submitted with name and phone number, for verification.

Log on to
southplainfieldnj.com
for the latest meeting agenda

IN YOUR OPINION

Dear Editor

There are few people I have had the pleasure to know who have dedicated themselves to improving the lives of others. At the top of that list is our Mayor Dan Gallagher. In his 20 years of public service of which 16 were as Mayor, Dan is directly responsible for improving the quality of life for every resident of our borough.

Everyone remembers when Hadley Road looked like a moon crater, when senior housing was considered a pipe dream, when the thought of a senior rec center was unattainable.

Remember when a drug store was planned at the corner of Oak Tree Road and Park Avenue? Remember when 20 condo units were to be built on Tompkins' and Clinton Avenue? Remember when the community pool was about to be closed due to lack of support and overall neglect? Remember when the PAL was half its size and lost tax dollars rather than generating revenue?

Dan Gallagher saw solutions when others saw unsolvable problems. I can tell you first hand that people all over our state regularly ask me how do you get so much done in South Plainfield? Why are your municipal taxes lower than surrounding communities? How have you been able to preserve so much open space? How is it possible to complete projects on a 'pay as you go' basis? The answer is always the same... we are blessed with an intelligent, dedicated Mayor who won't take no for an answer. Does the Mayor sometimes upset his adversaries? Of course, that's a part of leadership. If everyone likes you then you never made a tough decision. Dan Gallagher has made hundreds of them over his 16 years as Mayor and the results are all around us.

South Plainfield is a great place to live in and raise a family and is better off because of Mayor Gallagher. Above all else, he is a wonderful husband to his beautiful wife Marion and a great father and grandfather. I am particularly fortunate to be able to call him my friend. Mayor Gallagher.... we will miss you. Enjoy your retirement from politics. You've earned it!

PATRICK DIEGNAN

To the Editor

I am writing this letter in support of Donna Rann. Mrs. Rann is running for a seat on the Board of Education this year. I have known Donna for over nine years. I have always had the utmost respect for her. She has been a very dedicated mother and a very involved parent in this community. Donna has the spirit and drive to be a very valuable member of our Board of Education. Donna has always wanted what was best for the children of our community in any school activity she has been involved with. Her business experience will help her to make good decisions for our school district. Please vote for Donna in the upcoming election. She will bring hard work, dedication and enthusiasm to her job.

**SINCERELY,
CHRISTINE SCHULTE**

Mohr's
Flowers & Fancy Foods

Brighten up someone's day with a gourmet gift basket or floral arrangement.

2325 Plainfield Ave.
SOUTH PLAINFIELD
(908) 561-2808



Corporate Accounts Welcome

To the Editor:

I am a part of an amazing organization, The South Plainfield Athletic Booster Club, whose number one goal is to give back to the student athletes in our town. On Saturday, April 1, South Plainfield hosted a GMC track meet and the South Plainfield Athletic Booster Club was there, manning two stands from 7 a.m. to 4 p.m., serving over 2,000 athletes and parents. The proceeds from this past track meet, football games, basketball games and our upcoming track meets support items purchased, such as score boards for the baseball, football and softball fields, hurdles for the track team, field hockey and tennis equipment, the basketball shoot out, a tractor to maintain all our fields, food for our wrestling team in the State Championship Tournament, weight room equipment used by all our athletes, two scholarships a year to senior athletes and the senior letter dinner for all seniors who participated in a sport during their high school career.

The Athletic Booster Club is fortunate to work hand-in-hand with our exceptional coaches to afford our children every opportunity to be successful in a sport. Our coaches have reached out to their athlete's parents asking for support in manning our snack stands during our upcoming track meets. The track meets are our biggest income generators, and without assistance from parent volunteers, along with our Booster Club members, the events would not be a success. We are looking for parents to volunteer 2-4 hours during an upcoming track meet. The dates are as follows: April 28 and 29, May 13, May 26, May 27, June 2, June 3 and June 7. If you are interested in helping out, please call me at (908) 754-4620, ext 248.

In closing, I would like to thank Mickey Wrublewski, Patty Martin, Pat Fabino, Patty Remsing, Connie Besser, Chet Czaplinski, Scott Barton, Kurt Ullom, Carol Ullom, Debbie Boyle, Sherry Hardy, Paula Kowalski, Lynn Pennisi, Coach Fonti, Holly Weakley, John George, Enzo Pileggi and Kevin Lykes for their time and dedication this past Saturday.

**THANK YOU,
TERI PILEGGI
ATHLETIC BOOSTER CLUB**

To the Editor:

The South Plainfield Middle School Boys Basketball Team would like to publicly thank Coach Fonti on a wonderful basketball season. Coach Fonti, along with his assistant, Mr. Bennett, led the team to 19-3 record and was the Twin City Pharmacy/SPASA Holiday Basketball Tournament and March of Dimes Tournament champions. We just came from a pizza party which Mr. Fonti organized. Not only did the boys en-

Submit Letters to the Editor:

Please be advised that the Observer will no longer publish anonymous letters. Any letter received without identification will be discarded.

Letters may be submitted to the Observer, 1110 Hamilton Blvd. Suite 1B, South Plainfield, NJ 07080, or fax 908-668-8819 or by email: sposerver@comcast.net. Deadline is Monday, 5 p.m. Letters must be accompanied by a name and telephone number for verification. Please limit letters to no more than 200 words. We reserve the right to refuse a letter, to edit for clarity or length, and to limit the number of letters submitted on the same subject.

joy the pizza, they enjoyed Mr. Fonti's comments about each and every player. Even his nine year old daughter, Shannon, gave all 18 players her own personal thoughts, which were very touching. They will cherish the certificates and awards he presented to them. The boys got a kick out of seeing the huge picture Mr. Fonti brought along from two years ago when he was their Grant School coach.

Our team was very lucky to have such a great coach. With his expertise in all his years of coaching basketball, the Middle School was truly blessed to be coached by him. He passed on a lot of knowledge and a love for the game of basketball which every player felt. We hope Mr. Fonti sees his vision of being a high school coach come true someday.

Thanks again coach.

**SPMS BOYS BASKETBALL TEAM
2005-06**

To the Editor:

My name is Ernie "Jim" Giannakis, and I am a candidate for the South Plainfield Board of Education

I have resided in South Plainfield for 20 years with my wife, Linda, and my three children, Nick, Jaime and Jenny. Nick and Jaime currently attend our high school.

My commitment to raising my family in South Plainfield stems from the many positive experiences I've had while residing in South Plainfield. It is for those reasons and the student population who attend our schools daily that I ask you to consider me as a Board of Education member.

This district is faced with many challenges, which are increasing on a daily basis. The needs are endless: the ever changing State and Federal mandates for standard and special education; the rising costs of energy, fuel and facility operations; and the reduction of State and Federal aid. It is these challenges that will affect every child and resident.

I believe the decisions I will make will balance the educational needs of our children with the financial concerns of our residents, using a common sense approach to planning, spending, and seeking our fair share

(Continued on page 11)

20th Anniversary Sale

April 29, 2006 • 10-4

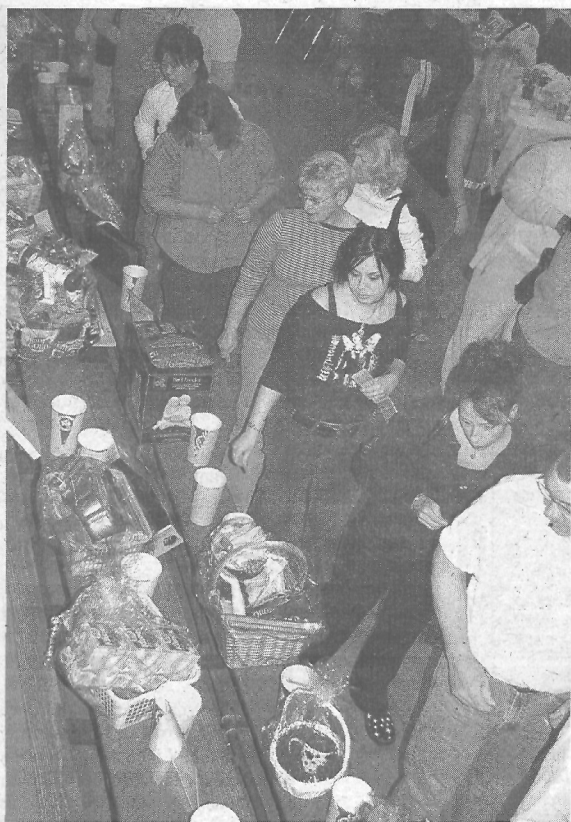
Cindy Michaels Jewelers

2325 Plainfield Avenue, South Plainfield
(Across from CVS, next to Wachovia Bank)

(908) 769-4264

Featuring a special
one-of-a-kind inventory

with up to **50% savings**



Project Graduation Auction

The ninth annual South Plainfield High School Project Graduation Auction was a success with over 480 people in attendance. Tables full of exuberant auction-goers partied their way through the evening. The fundraising event supports Project Graduation, an all night party for the SPHS graduates held every year.

Business Association Plans May Golf Outing

The South Plainfield Business Association is sponsoring their ninth annual golf outing on Tuesday, May 2 at Cranbury Golf Club in West Windsor.

Entry fee includes the 18-hole event, use of locker room, green fees and cart; continental breakfast; complimentary beverage cart, hot dog and chips "at the turn," open bar (beer, wine and soda) and a BBQ luncheon. Casual attire. No metal spikes may be worn on the greens.

Prizes will be awarded for hole-in-one prize, the longest drive, closest to the pin (two holes), low gross, low net and the most honest golfer.

The day starts with registration and a continental breakfast from 8 until 8:45 a.m. The shotgun start begins at 9 a.m. and the open bar begins at 2 p.m. The BBQ luncheon starts at 2:30 p.m. and the day comes to a close with the 3:30 award ceremony.

The entry fees are as follows: Corporate-Eagle (includes foursome/flag/

tee) \$1,000; Birdie (includes two-some/tee) \$500; individual golfer \$125 and BBQ luncheon only is \$50.

Corporate underwriter cost is: breakfast sponsor \$250, beverage cart sponsor \$250, flag first and 18th green \$175, flag second and 17th green \$125 and tee sign \$100.

RSVP by April 22. For more information or to donate a door prize, call Bob Longo at (908) 753-7004 or Ed Koznowicz at (908) 754-8900.

Deadline Extended For Hall of Fame Nominations

The South Plainfield Hall of Fame Committee is again holding their search for candidates for induction into the Hall of Fame. The Hall of Fame was established at South Plainfield High School to recognize outstanding graduates as leaders in their fields who could serve as role models for current and future students.

To be eligible, all Hall of Fame candidates must have graduated from South Plainfield High School at least 15 years prior to nomination, and they must have achieved a prominent position in their careers or made a significant contribution to the world/community.

Those candidates selected will be honored at a luncheon and will be inducted into the Hall of Fame at the high school's annual Academic Awards Program on June 6. Former inductees are also invited to attend the luncheon. The nominees will also have their photographs and biographies displayed on a "Wall of Fame" at the high school.

Community members interested in obtaining a Hall of Fame nomination form, or for more information about the luncheon, please call Dr. Kenneth May at (908) 754-4620, Ext. 248 or 249.

The application deadline has been extended to April 19.

OPEN HOUSE * OPEN HOUSE * OPEN HOUSE

SUNDAY, APRIL 9th - 1 TO 4 P.M.



Offered at \$389,900

Beautiful custom Split featuring 3 bedrooms, 2 full newer baths. The first floor offers an open floor plan, hardwood floors, ceramic tile entry, recessed lighting and bay window. The newer kitchen features ceramic tile countertops & backsplash which is open to the formal dining and living areas. The spacious family room opens to a covered patio leading into the fully fenced yard. Attached garage, newly paved triple wide driveway with paver block walkways and a storage shed. Newer vinyl siding, windows and roof. There is a full basement, newer furnace, central air and all appliances included too! Directions: Sampton Ave. to corner of Fred Allen Drive.

Beautiful custom Split featuring 3 bedrooms, 2 full newer baths. The first floor offers an open floor plan, hardwood floors, ceramic tile entry, recessed lighting and bay window.

Free Market Analysis of Your Home

To find out what your home is worth in today's real estate market, contact us for a complimentary market analysis.

All consultations are confidential and with no obligation.

Century 21
Moretti Realty

"The Lacerda Team"
225 Maple Avenue
South Plainfield, NJ 07080
(908) 755-5300 Ext. 302
(908) 578-1166 Cellular
Email: LacerdaA@morettirealty.com
Website: www.Lacerdateam.com

The Team That Works
We Get Results

Give Us a
Call
And
We'll
Prove It!



Top Agent for
Over 10
Years

Andrea & Jesse Lacerda
"The Lacerda Team"

Recycling Center Closed Good Friday

The South Plainfield Recycling Center on Kenneth Ave. will be closed on Friday, April 14, for Good Friday. Recycling will be open instead from 8 a.m. to 3 p.m. on Thursday, April 13. The Recycling Center and the Yard Waste site will be open as usual from 8 a.m. to 3 p.m. on Saturday, April 15.

Regular Recycling Drop-off Center hours are 12 noon to 7 p.m. on Tuesdays and 8 a.m. to 3 p.m. on Fridays

and Saturdays. Regular spring Yard Waste hours are 12 noon to 7 p.m. on Tuesdays and 8 a.m. to 3 p.m. on Saturdays.

2006 Yard Waste Decals are available in the Municipal Clerk's office in Borough Hall Monday through Friday. Bring the registration of the vehicle you will be using.

For updates, call the Recycling Hotline: (908) 226-7620.



In Search of Local History

Second Historic Marker for South Plainfield Announced

The South Plainfield Historical Society has received word from Middlesex County Cultural and Heritage Commission that the site of the first Quaker Meeting House will be recognized with a historic marker. The bronze marker is a gift from Middlesex County and the Board of Chosen Freeholders working in collaboration with the Cultural and Heritage Commission. The Commission is particularly interested in sites that are little known to the public.

Residents may remember that a Quaker Meeting House marker once stood along Woodland Avenue near the Plainfield Country Club. That location, however, did not jive with maps drawn in the 18th century. Local historian Larry Randolph extensively researched and examined British and American Revolutionary War era maps. The military maps show the Meeting House to be located in the vicinity of Block 221, Lot 30 on a parcel of land presently occupied by the Community Pool.

Writing in "Looking Back at South Plainfield," Randolph notes that the first settlers in this area appear to be Quakers. Fleeing persecution in their native Scotland, they came to New Jersey in the 1680s. Their numbers never became large, for they found the religious and political climate more tolerant of them in the settlements of West Jersey and Pennsylvania. Pioneering Quakers in the Plainfields include the names of Vail, Compton, Gordon, Webster, Fullerton

and Barclay. Two of the most prominent and influential Quakers in this immediate area were the Laing brothers who purchased 700 acres of land in what would become South Plainfield from John Barclay, a proprietor, in 1692. William Laing would build the village's first major industry, the grist mill on

the Cedar Brook, in the early 1700s, establishing more than 200 years of milling at the site.

The Laings were members of the local Society of Friends. In 1732, the year of William's death, they donated land near their farmhouse along

(Continued on page 11)

Want to know what's
going on... **Subscribe!**

✓ Yes, I want home delivery of the Observer.

NAME _____

ADDRESS _____

CITY _____ STATE _____

ZIP _____ PHONE _____

CREDIT CARD NO. (MC OR VISA) EXP. DATE _____

NUMBER _____

Send check or money order for \$25/one year (out-of-town-\$30) to: South Plainfield Observer, 1110 Hamilton Blvd., Suite 1B, South Plainfield, NJ 07080.

Save a stamp.... call in your subscription request! (908) 668-0010.

Act Now!
**PRE GRAND
OPENING
SPECIAL OFFER!**

**ONE WEEK ONLY!
SAVE
50%
Enrollment Fee!**

Ladies, here's your chance to become a Charter Member of Inches-A-Weigh, a specialty Weight Loss, Nutrition & Exercise Center designed to meet the specific needs of women of all shapes, sizes and ages. We're unlike any other program out there and we guarantee your results! So make the call that will change not only your dress size-but your life. Call today to take advantage of this limited time offer.

**Guaranteed To Lose 8-15
Inches In Just 3 Short
Weeks or Your Money Back!**

Inches-A-Weigh®
WEIGHT LOSS CENTERS FOR WOMEN

CALL (908) 222-0220
For a FREE No Obligation Consultation

OPEN Mon. to Thurs. 8:30-8:00 • Fri. 8:30-6:00 • Sat. 9:00-1:00

*And the purchase of a guaranteed program. Applies to new members only-Hurry! Offer ends soon.

"I lost 90 lbs.
& went from
a size 28 to a
size 8. If I
can do it, you
can too!"
Marsha

Around Town

Lenten Fish Dinner At Sacred Heart

April 7

The South Plainfield Knights of Columbus Council #6203 and Sacred Heart Church will have its last Lenten Fish Dinner, Friday, April 7 in the Sacred Heart cafeteria from 5-7 p.m.

Menu features fillet of fish (fried, broiled, Parmesan), a pasta dish (cheese ravioli, manicotti, linguini) pizza, fresh garden salad, rice pilaf, French fries or macaroni and cheese, cole slaw, coffee, tea or cold drink, plus dessert.

Take out orders are available. Admission is \$8 for adults, \$7 for seniors and \$4 for children. Pay at the door.

Juniorettes to Hold Fashion Show

April 7

The South Plainfield Juniorettes will hold a Fashion Show on Friday, April 7 at 7 p.m. in the SPHS cafeteria to benefit the Fistula Foundation. Tickets are \$12 in advance or \$15 at the door.

Clothes provided by Tops N' Things, Inman Avenue, Colonia and hair styles by All About U, Metuchen.

There will be a silent auction, along with various door prizes and desserts and beverages. All are welcome.

For tickets, call (908) 405-1300 or (908) 753-7253.

Easter Egg Hunt

April 8

The South Plainfield Recreation Department will hold their annual Easter Egg Hunt on Saturday, April 8 at 1 p.m. behind the PAL building on Maple Ave. All residents ages one to 10 are welcome to join the fun. Please remember to bring a bag to hold the collected eggs. If you would like to take a picture with the Easter Bunny, please bring your own camera. For more information, please visit www.sprcreation.com.

Antique Appraiser Returns to Library

April 9

Appraiser Alan G. Snyder will be at the library on Sunday, April 9 at 2 p.m.

South Plainfield SENIOR CENTER

The Senior Citizen's Center is open Monday through Friday 8:30 a.m.-5 p.m.
NOW OPEN SATURDAYS 9:00 AM-12:30 PM

Daily Events
9-11 AM Coffee & Cake
9 AM-4 PM Cards & Pool
(908) 754-1047

What's happening in
APRIL

MONDAY	TUESDAY	WEDNESDAY	THURSDAY	FRIDAY
UPCOMING EVENTS Tax Preparation Every Thursday and Friday 9 am to noon * * * Overnight trip to Baltimore w/Dinner Theatre Date Changed to September 30 to October 1				BINGO 10-2pm Lunch Available Tax Preparation 9am to noon
Knitting/Crocheting 9:30-11:30am Yoga 10:30-11:30am Art Class 11:30am	Bingo 10am-2pm Ladies Social 10am Lunch Available	Exercise 8:45am Computer Class 10am, 11:30am & 1pm Line Dancing 10am Tai Chi Class 2pm	Shop Pathmark 9am-11am Tax Preparation 9-12 Practical Crafts 10am Computer Class 11am & 1pm Exercise Class 1:15pm	CENTER CLOSED
10	11	12	13	14
TO SIGN UP FOR MEMBERSHIP IN THE SENIOR CITIZEN'S CENTER, VISIT THE CENTER.				

Snyder will provide antique appraisals for attendees. As Snyder will be leaving the area, this will constitute his farewell appearance, so everyone is encouraged to attend. Participants are limited to two items per person; appraisals will be given on a first come, first served basis. Program is presented free; no pre-registration is required.

For more information, call (908) 754-7885 or visit their website at www.southplainfield.lib.nj.us.

Easter Services

April 14, 16

The Association of South Plainfield Churches will hold Good Friday services on Friday, April 14 from 12-2 p.m. at St. Stephen's Lutheran Church, 3145 Park Ave. Sunrise Service on Easter Sunday, April 16 will be held at 6:30 a.m. at Spring Lake Park.

4th Annual Seafood Feast at the Elks

April 14

The South Plainfield Elks 4th Annual Seafood Feast is Friday, April 14, 1254 New Market Ave. Dinner is at 6:30 p.m. Menu includes: half a lobster, stuffed flounder, mussels marinara, shrimp scampi, seafood bisque,

steamers, shrimp in the ruff, salad, bread and butter and dessert. Cash bar.

Tickets are \$30 and must be purchased by Wednesday, April 12. To purchase tickets call Pete at (908) 656-4011. There will be no tickets sold at the door.

AARP Chapter 4144

April 20

AARP Chapter 4144's next meeting will be held at the South Plainfield Senior Center, 90 Maple Avenue on Thursday, April 20 at 12:30 p.m. A program on IRA's will be presented by Senior Seminar Services, Inc. of Gilbertsville, PA.

VFW Dinner

April 21

VFW Memorial Post No. 6763, located at 155 Front Street, will be hosting a dinner from 5 to 7 p.m. on Friday, April 21. All are welcome to attend. For more information please call (908) 668-9751.

Comedy Show at Polish Home

May 20

The Polish National Home will present a Comedy Show on Saturday, May 20 from 9 p.m. to 1 a.m. You are welcome to bring your own food. Cost is \$30 per person.

Call Lisa at (908) 668-9442.

Baltimore Trip

September 30

Join us for a weekend of fun on Saturday, Sept. 30 through Sunday, Oct. 1. Trip includes: transportation by private deluxe motorcoach, overnight accommodations at Best Western & Conference Center, sightseeing tour of Baltimore, dinner and show at Toby's Dinner Theatre, hot buffet breakfast on Sunday morning, free time on Sunday at the Inner Harbor for sightseeing, shopping and lunch. Cost is \$190 per person double occupancy, \$245 single or \$185 triple.

Please make reservations as early as possible. Space is limited to 44.

For more information please call the South Plainfield Senior Center at (908) 754-1047.

— Out of Town —

Starlight Singles

April 7

A happy hour for singles 30/40 will

be held on Friday, April 7 at the Westin Hotel in the The Copeland Restaurant on Whippany Rd. in Morristown. Free finger foods, live music and entertainment.

RSVP required to (732) 764-9073.

Easter Egg Hunt at Alliance Bible

April 8

An Easter Egg Hunt will be held at Alliance Bible Church, 52 Mt. Horeb Rd, Warren on April 8 from 10 a.m. to noon. The Easter Egg Hunt will be held on the church lawn. Admission is free.

For information or directions, call (908) 903-1940.

Adult CPR Course

April 8

The American Red Cross Tri-County Chapter and Student Organization of Kean University, Inc. will be offering an Adult CPR course on Saturday, April 8 from 11 a.m. to 3:30 p.m., Kean University Center, Room 228, 1000 Morris Avenue in Union. The course is \$15 per person and includes all materials and the CPR certificate. Advance registration is necessary.

Please call the American Red Cross at (908) 756-6414 ext. 10 or 27 to register.

Spring Auction

April 8

Richard Stockton College of New

Jersey's 26th Annual Spring Benefit Auction will be held at Trump Taj Mahal, Atlantic City, in the Grand Ballroom on Saturday, April 8 at 6 p.m.

Fine dining, live and silent auction items and spectacular entertainment. Grammy winner Roberta Flack will perform.

All proceeds to benefit the scholarship fund at the college.

Tickets are \$200. To purchase tickets or inquire about sponsorship, call the Stockton Spring Scholarship office at (609) 652-4658.

Singles Mingle and Comedy Show

April 8

The Starlight Socials will host a singles mingle and comedy show on Saturday, April 8 at 9 p.m. at the Woodbridge Sheraton Hotel on Rt. 1 South in Woodbridge. Cost is \$5 cover charge. Meet in lobby outside of Kristie's at 9-10 p.m. for comedy show.

RSVP required to StarlightSocials@aol.com or (732) 764-9073.

Blackrose performs in Woodbridge

April 8

Blackrose, the band, performs classic rock and roll music and today's hits on April 8 at 10 p.m. at Rugs and Riffy's, 493 Rahway Avenue in Woodbridge. No cover charge.

Widows/Widowers

April 10

Middlesex East Widows or Widowers will be holding a business meeting on April 10 at 7:30 p.m. Light refreshments will be provided. All widows and widowers are invited to attend.

For more information call Dorothy at (732) 541-2174.

Starlight Socials

April 12 and 15

The Starlight Socials will be hosting a Singles Happy Hour on Wed., April 12, 7-9 p.m. at Robertos, 70 W. Passaic St., Rochelle Park. Free finger foods. No cover charge.

Also, Friday, April 15 at Clancy's, 1250 Rt. 31N, Lebanon. Free buffet at 5:30 p.m. Singles mingle. Live band and dancing at 9 p.m. No cover charge.

RSVP required to (732) 764-9073.

Scotch Plains Music Center

The Biggest Little Music Store in New Jersey

413 Park Avenue, Scotch Plains, NJ 07076
(908) 322-7542

HUGE SELECTION OF:

Sheet Music - Tons of It!!!!!!
Music Books - You Name It, We Probably Have It
New and Used Guitars
Accessories for All Instruments
Master Class Videos / Video Rental Club

PRIVATE LESSONS

All Styles, From Mozart to Metal
Piano • Guitar • Sax • Bass • Flute
Clarinet • Trumpet
And More

ALL
SCHOOL
MUSIC
SUPPLIES

Come Join Our Family

Contemporary Worship Sunday - 9:00 AM
Sunday School and Traditional Worship 10:30 AM
Praise Service - Thursday Evening 7:00 PM
Day and Evening Bible Studies

Caring Spiritual Support and Fellowship
Inspiring Music

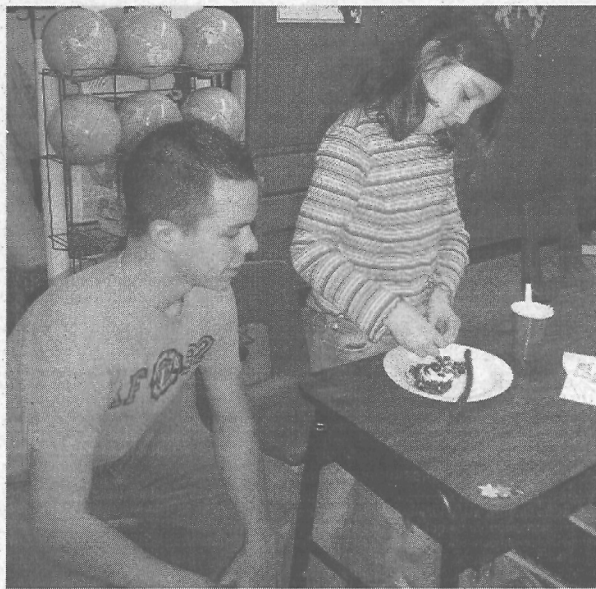


Wesley Church
1500 Plainfield Avenue
South Plainfield, NJ

Wesley Church provides a Message of Hope and a place for people of all ages to come to understand and know God

Rev. Dr. Nehemiah Thompson, Pastor
Church Office 908-757-2838 / Residence 908-756-1044
E-mail: WUMCSP@juno.com

It's Elementary for SPHS Seniors To Celebrate Dr. Seuss' Birthday



Franklin School second grader Shariya Simpson puts candy eyes on a "Cat in the Hat" cake.

For the first time in the district, over 100 high school seniors celebrated Dr. Seuss's birthday with the students in all the four K-4 elementary schools.

High School student counselor Eileen Boettger, advisor to the National Honor Society, and staff developer Mary Ellen Martko, advisor to Peer Leaders, recruited students. High school English teacher Bonnie Vigneri assigned the seniors in her English classes to work in teams of four or five to develop lesson plans and activities around the Dr. Seuss books

they would read to the children. Members of the FCCLA Family Career and Community Leaders of America also got into the spirit of Dr. Seuss Day by baking 200 cookies resembling green eggs, based on "Green Eggs and Ham." Kim Tran, treasurer of FCCLA, dressed as the Cat in the Hat and handed out cookies to youngsters at Roosevelt School. "The club members spent three days baking cookies after school," said advisor Loretta Tansy.

On March 1 Michael Scheutz ar-

rived at Franklin school dressed as a clown. His group—Jeannette Gorman, Kevin Pereira, Madeline Vargas and Matt Zebrowski from Vigneri's class—chose "The Foot Book" by Dr. Seuss to read to first graders. "I decided to buy a clown outfit because the book mentions a clown shoe," said Michael.

After the students read the story to the class, they had them color the outline of two and cut them out. The children were then called upon to play a game—a variation of pin the tail on the donkey—this time with the feet.

The first graders were blindfolded, spun around, and sent in the direction of the large square of cardboard with two feet imprinted on it where most of the children managed to slap their paper feet where they were meant to be.

In Tara Fusaro's second grade class the students read "The Cat in the Hat" and had the children make their own Cat in the Hat confection from small cakes that they covered with icing. They attached candy features of eyes, nose, mouth and three red and white peppermints cemented together with icing to make the cat's hat. Then the children played a matching game trying to match different characters from Dr. Seuss' work that were hidden behind pieces of paper.

Kindergarten children in Rosemarie Pelton's class were visited by seniors Jen Giang, Beverly Jamieson, Anthony Nemezik and Carrie Kazimir. The book, "One Fish, Two Fish" was read, and the children colored a copy of Seuss's drawing of a fish and played fish bingo. They received Swedish fish for prizes. Vigneri's students planned similar events for kindergarten through second grade students in every elementary school. Members of the National Honor Society and Peer Leadership read to third and fourth graders.

Senior Katie Pollock read to fourth graders at Roosevelt. "I wore my Lorax t-shirt. There were two readers for the class and we read three books, but only one by Dr. Seuss. I read "The Day I Swapped My Dad for Two Goldfish," by Neil Gaiman. The students really enjoyed them and were very well behaved. We talked about the books but the students really wanted to know more about high school," said Katie.

"It was wonderful," said Martko. "It was great to see high school students reading. This was a first time event, and it will get better."



A blindfolded Franklin School first grader tries to match a paper foot to the correct location on a poster, while clown Michael Scheutz watches.

FROM THE DESK OF DEBBIE BOYLE

Tuesday, April 18, is election day for Board of Education members, as well as the school budget. Polls will be open from 2-9 p.m. April 11 is the final date to apply for an absentee ballot by mail. Voters have until April 17 at 3 p.m. to apply for absentee ballots in person at the office of the county clerk. If you have college students that will be away, please call the Middlesex County Clerk at (732) 745-3005 for further information.

There are currently eight staff cuts proposed in the budget, whether it passes or fails. There will still be an increase in taxes if the budget does not pass. Student Assistant Counselors (SAC), elementary school computer positions, middle school sports programs, music and art programs will be inevitably reduced or cut if the budget does not pass along with increased class size. Please attend a budget presentation that is given by Superintendent Dr. Robert Rosado and ask questions so you are totally prepared when you go to vote. Help save a teacher and a program.

Fundraising has become a way of life in South Plainfield, in order to obtain many of the basics and all the extras for our children in the school system as well as for various types of

events in town. Thank you to all those people who support all the fundraisers in our elementary schools, Grant, Middle and High School.

The 2007 Stokes Committee has suggested a clothing drive to benefit the 2007 Stokes trip. We are awaiting the availability of a trailer that would be on the Grant School premises for one day.

Greg Young, guidance counselor at Grant School, it is wonderful to see you back.

Congratulations to the South Plainfield High School Boys Bowling Team and coaches for your outstanding season and winning the White Division Sportsmanship Award.

Grant School is hosting a "Jump Rope for Heart" for the American Heart Association. Once again, please sponsor a jumper for this worthwhile cause.

During the course of many years there have been changes in many coaching positions. Many times these changes are very difficult for both the coach and the children and often causes resentment for both sides. The coaches and children need time to digest each others thought process and requires a huge amount of patience on both

ends in order to obtain a common goal. The children are affected the most, no matter who the incoming coach may be. It becomes very difficult to have a working relationship with each other when ideas are forced rather than worked through. Relationships take invested time and understanding. Once again, there is a chain of command that needs to be followed if there is any type of problem. If you do not come forward your voice remains unheard.

Thank you to the Tuxedo Shop in the Wal-Mart plaza for loaning the Almost Famous Players M.C. Rocco Severini a tux for the presentation on March 25.

The SPHS Peer to Peer Leadership program is currently preparing Spring Baskets that will be distributed to less fortunate families in town.

Senator Barbara Buono is currently proposing a bill that supports reevaluation of the Abbott Districts. Our tax dollars are used to fund those districts. Please contact your district legislatures to support this bill.

Thank you to Lorraine Battison, sixth grade parent, who came forward to chair the Gertrude Hawk candy sale that benefits the 2007 Stokes Trip. It is greatly appreciated. -Debbie Boyle

HOMETOWN HEROS

3 to 6 Foot Subs • Sloppy Joe Platters • Gourmet Wrap Platters
Assorted Finger Sandwich Platters • Homemade Salads
Assorted Sandwich Platters • Complete Line of Hot Trays

South Plainfield's **1st** Choice for

Quality Catering

HOMETOWN HEROS

340 Hamilton Blvd. So. Plainfield

908-755-HERO (4376)

OPEN SUNDAY

Michael & Oscar

MO's Salon

Hair Styling • Facials • Makeup

"Expect the Best"

PROM SPECIALTY STYLES—Updo, Extensions, Temporary Color & Makeup ****CALL FOR BOOKING APPOINTMENT****

Featuring

Top Stylists Oscar • Denise • Tammie • Michael

Specializing in expert hair color, cut and styling

And South Plainfield's Own Tina Ternyl-Estetician (facials)

Makeup Artist Maria

Open Tues-Sat 9 a.m. to 8 p.m.

25 South Plainfield Ave.

(formerly Razor's Edge next to Curves)

908-769-8330

No appointment necessary but recommended

"Lent is a time for a fresh new taste of God!"



Sunday Worship—10am
Tuesday Night—Soup & Prayer—

6:30 pm

Maundy Thursday Soup
Supper/Communion

Service 6:30 pm

Easter Celebrations

9:30 am / 11 am

Oak Tree Church

www.oaktreechurch.org

The Rev. Rick Oppelt, Pastor

Plainfield Road

445 Plainfield Ave.,

N. Edison Park Avenue

732-549-4178

"O Taste and see that the Lord is good!"

Twin City Pharmacy

Tel. (908) 755-7696 Fax (908) 755-6003

1708 Park Ave., South Plainfield, NJ 07080 (Next to Farmer's Market)

Today's Modern Pharmacy with Old Fashioned Values

DME Provider for US Healthcare/AETNA & CIGNA

Medicare and Medicaid Provider
Solaris In-Network DME Provider



MEDLINE
Rollator with
Seat/Loop
Brake
\$99.⁹⁵

- Ostomy Supplies inc. Hollister & Convatec
- Full Line of Diabetic & Wound Care Products
- Hospital Beds - Commodes
- Wheelchairs - Walkers
- Enteral Feeding Supplies & Supplements

REGIONAL HOSPICE PROVIDER

24 Hour Emergency Care Service - Free Delivery

Pup Purri Pet Grooming Services

We treat your pets with the patience and kindness they deserve. Rob and Tammy use only natural products. Our expert stylists will give your pet the look you want without the use of tranquilizers.

**634 Bound Brook Rd.
Dunellen**

Tuesday-Thursday 8-5 • Friday 7:30-5
Saturday 8-4 • Closed Sunday and Monday

All Breeds of Cats and Dogs

**Call for an Appointment
732-968-2747**

If you want your pets in hands you can trust, bring them to Pup Purri!

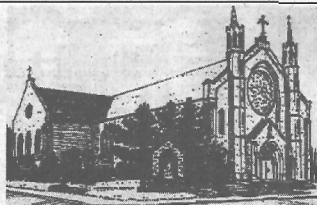
SPECIAL
\$500 Off
GROOMING
New Customers
One Time Offer • W/Coupon

SPECIAL
\$200 Off
GROOMING
Current Customers
One Time Offer • W/Coupon

Sacred Heart Church

149 South Plainfield Ave.
South Plainfield, NJ

Rev. John Paul
Alvarado, Pastor



Sacrament of Reconciliation

Saturday 10-11:30 a.m. and by appointment

Mass Schedule:

Saturday Evening Mass 5:00 p.m.

Sunday 8:00, 9:30, 11:30 a.m.

Weekdays Tues., Wed., Fri., Sat. 9 a.m.; Mon. and Thurs. 7 p.m.

Monday Eve. Mass with Miraculous Medal Novena Prayers 7 p.m.

Holy Days 9 a.m., 12:10 p.m. and 7 p.m.

Enjoy made to order omelettes and more at the LIONS PALM SUNDAY GOURMET BREAKFAST

Sponsored by the South Plainfield Lions Club
Helping the Visually & Hearing Impaired Since 1947....

When: **Palm Sunday, April 9, 2006**

Where: **South Plainfield High School Cafeteria**

Time: **8:00 am to 12:00 noon**

Ticket Price: **\$6.00**

Tickets may be purchased at the door or through a Lions member.

For information, please call (908) 753-3850.

Look and Feel Your Best!



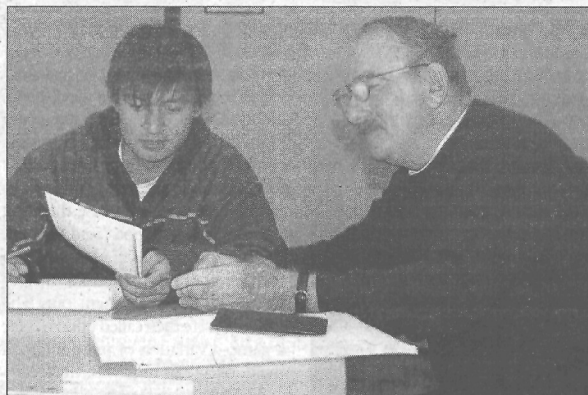
COSMETIC AND FAMILY DENTISTRY

Austin S. Rednor D.M.D., P.A.
3826 Park Ave., Edison, NJ
Phone: (732) 635-0300

50% OFF (REG. \$70)
CONSULTATION & BITEWING X-RAYS
WITH THIS AD

NEW PATIENTS ONLY EXPIRES 6-1-06

Residents Devote Time to Teaching Literacy



Ken Reisch volunteers his time giving others the gift of literacy.

By Patricia Abbott

South Plainfield residents Ken and Audrey Reisch devote many hours a week as literacy volunteers, helping immigrants learn our language. Their experience with exchange students has helped them understand that English is not an easy language to learn.

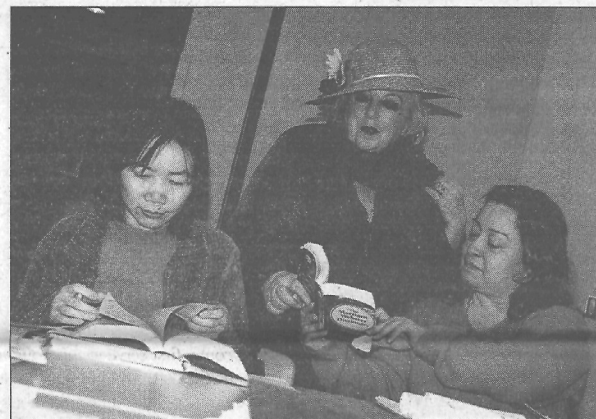
Working with Literacy Volunteers of Middlesex and Piscataway's John F. Kennedy Library, Ken and Audrey teach English as a Second Language conversation skills to immigrants who want to improve their English. The class meets each Monday and has about 10 students on a waiting list to join. The eager students come from around the globe including Taiwan, China, Portugal and other countries.

Audrey once ran a tutoring service, so teaching comes naturally to the Reischs. They begin with reading assigned short stories at home or by writing essays on a topic of their choice. From the stories they cull idioms and words they do not understand. One at a time the students present them to Ken and Audrey and the class. Copious notes are taken as each idiom is explained. They also write essays using the idioms they have learned. In a recent class one essay told of an earthquake in Taiwan. The learning experience became a two way street as Ken asked Karen Huang questions about the disaster. By giving back to the community this way, they feel their own lives are enriched as well.

Most of the students learned about the class from their visits to the Piscataway libraries. The students are screened via a test to see if the class is right for them. Their reasons for taking the classes are almost all based on a strong desire to communicate better at their respective jobs.

The Reischs' interest in literacy and English began in 1988. After their

three children married within the course of a year, the Reischs decided they wanted to give back to the community by reaching out to help newcomers to our country. They opened their empty home to exchange students. Over the course of many years they hosted over 100 foreign exchange students from all over the world. Their knowledge of English varied greatly. Ken and Audrey noticed that conversational English seemed to be a source of confusion and frustration for many



Audrey Reisch teaches "shortcuts" to literacy students.

of their guests. The problem-idioms—those word combinations such as 'keep your feet on the ground', 'down in the dumps' and 'bright side,' phrases we don't think twice about. Even well educated immigrants can become confused if they try to interpret each word literally.

Ken and Audrey joined and graduated from the Literacy Volunteers of America program and began helping people learn to read and speak better English. When they moved from Westbury, NY to South Plainfield four years ago, they joined the Literacy Volunteers of Middlesex and

Kartikasari of Mt. Rushmore came here from Indonesia six years ago. She is a waitress and met the Reischs at her job. She said, "Now I am able to understand what people say, especially jokes. They are such nice teachers who gave their time to be volunteer teachers, they are very patient teachers. They have made an impression on me." Similar sentiments were echoed by all of the students.

Ken said, "We have discovered that life has dealt us a great opportunity. To give love continuously and to receive love abundantly, what more can you ask for!"

Citizens Urged to Vote in April 18 School Elections

The South Plainfield Board of Education is urging community residents to vote in the 2006 Annual School Election on Tuesday, April 18.

"The local school board plays an essential role in the education that our children receive," said Donna M. Tolley, business administrator/board secretary. "On April 18, voters will have the opportunity to select the men and women who will set the policies under which our community's schools will operate. Voters will also weigh in on the proposed school district budget."

"But citizens cannot be heard if they don't exercise their right to vote."

Tolley explained the school board's "essential role" in education: the local board of education sets policies in areas such as classroom instruction, student discipline, and the use of school facilities. These policies guide the school administration in managing the educational program; the school board approves the local district's proposed budget for presentation to the voters; and it negotiates employee con-

tracts, and approves the hiring of teachers, administrators and other staff.

Statewide, more than 1,600 board of education positions will be on the ballot on April 18. Voters can become familiar with the candidates and the issues affecting the South Plainfield Public Schools in a number of ways, according to Tolley. Newspapers and local access cable stations cover school board elections and frequently profile candidates. In addition, local Leagues of Women Voters, parents' organization and community groups often sponsor candidates' forums.

To participate in the annual school election, a citizen must be a registered voter in his or her municipality by March 28.

Voters unable to go to the polls on April 18 may apply for absentee ballots, which are available at the county clerk's office. Residents can apply to their county clerk for absentee ballots by mail. County clerks must receive mail applications by April 11. In addition, voters have until 3 p.m. on April 17 to apply for absentee ballots

in person at the office of the county clerk.

The polls are open from 2 - 9 p.m. and the locations are as follows: Poll 1, Districts 1 & 7-Franklin School; Poll 2, Districts 6 & 11-Rescue Squad; Poll 3, Districts 9 & 12-John F. Kennedy School; Poll 4, Districts 3 & 13-John E. Riley School; Poll 5, Districts 4, 10 & 15-New Roosevelt School; Poll 6, Districts 5 & 14-Middle School; Poll 7, Districts 2 & 8-American Legion Hall.

Polling information is also contained in sample ballots mailed to all registered voters prior to the election.

"Local school board membership is an important public office, one that affects the quality of life in our community," said Tolley. "I urge voters to make sure their voices are heard on April 18."

Subscribe 24 hours a day.

Email your request to:
spobserver@comast.net



Girl Scouts spend the night on the floor of the Franklin Institute.

Girl Scouts Enjoy Overnight Visit to Franklin Institute

Nearly 70 Junior Girl Scouts from Girl Scouts of Washington Rock Council trekked to Philadelphia in mid-March for the Franklin Institute Overnight. Sponsored and run by GSWRC's Program and Education Department, the event is one of many offered by the council, allowing girls to expand their horizons and gain practical knowledge and experience.

The girls, from many of GSWRC's 24 communities, took in an illuminating auditorium show, took part in hands-on-electricity activities, watched an astronomy show and ventured in and out of the Institute's famous giant heart. The girls then spent the night on the Institute's floor, getting to

know scouts from their surrounding communities as well as spend quality time with fellow troop members. Each girl came away with an evening full of memories as well as a Camp-In Patch.

Founded in 1957, GSWRC provides the optimal Girl Scout experience to nearly 11,000 girls and adults through Union, Middlesex and Somerset counties. The council service center and adjoining full service shop are located in Westfield.

Be sure to visit the online home of GSWRC at www.westfieldnj.com/girlscouts. Be sure to check out the council's Resident and Day Camp offerings.

SPEA to Host Emil Leporino Memorial Golf Classic

The South Plainfield Education Foundation, Inc. will be hosting a Golf Classic in memory of Emil Leporino on Monday, April 24 at Heron Glen Golf Course, located at 110 Highway 202 and 31 in Ringoes.

The objectives of this event include financial support for incentive programs that encourage academic achievement and good citizenship for South Plainfield students, annual scholarships, internship and co-operative work opportunities, opportunities for incentive industry/school partnerships, and endowment funds for scholarships.

To register, send a check for \$155 (per person) payable to: South Plainfield Education Foundation, PO Box 733, South Plainfield, NJ 07080. In-

clude your name, company, address, city and telephone number. Checks guarantee your reservation; this is a first come, first serve event. Your entry includes an 18 hole golf event, green fees and cart, lunch and a buffet dinner. All gratuities are included. Wear casual attire and rubber spikes only. The prizes are attractive, including a new car, a vacation, or a pot of gold for a hole in one. Prizes will also be given for low net, low gross, longest drive, closest to hole, closest to the line, corporate team net, and corporate team gross.

The outing schedule is as follows: registration at 10 a.m., shotgun start, 10 a.m.; dinner and awards at 5 p.m.

For more information, visit www.spvision2001.org.

From the South Plainfield Library

Bookmarks

by Jaime Unglaub

Spring is here! How does taking walks outside in this beautiful weather while listening to downloaded books sound? Your library card provides you access to hundreds of digital audio books you can also listen to on your computer, MP3 player or burn to a CD for later use. Visit our website, www.southplainfield.lib.nj.us/ and click on the audiobook download icon, or visit the Listen NJ website directly at www.listennj.com.

We have two upcoming family programs this week at the library. On Sunday, April 9, there will be an appearance by antique appraiser, Alan G. Snyder, from 2 to 4 p.m. There is no pre-registration, no appointments and participants are limited to two items please.

On Monday, April 10, in honor of National Coin Week, the Watchung Hills Coin Club will be providing a program entitled, "A Penny Saved Is History Earned." This program starts at 7 p.m.; there is no pre-registration. We look forward to your attendance at these exciting programs.

Most of the children programs will be held at their regular time the week of April 10. Join Miss Linda for songs, story and crafts for children 3+ on Tuesday at 10:30 a.m., Wednesday at 6:30 p.m. and Thursday at 1:15 p.m. Join Miss Jaimie for *Time for 2s and 3s* on Wednesday at 10:30 a.m. and Thursday at 6:30 p.m. *Books-N-Babies* will not be held on Friday, April 14, due to observance of Good Friday. *Books-N-Babies* will be held instead next Friday, April 21, at 10:30 a.m.

Planning to relax and watch a movie after a hard day of spring-cleaning? Then why not check out our new additions! *Bee Season* starring Richard Gere, *Capote* starring Oscar winning actor Phillip Seymour Hoffman, *Memoir of a Geisha*, *Prime* with Uma Thurman or *The Chronicles of Narnia*.

Please take note that the library will be closed Friday, April 14, and Sunday, April 16 in observance of Good Friday and Easter. We wish you and your family happy holidays and we will see you next week!

WEEKENDS at Wegmans Woodbridge

Join us April 8 & 9

Make a Great Meal for Easter or Passover

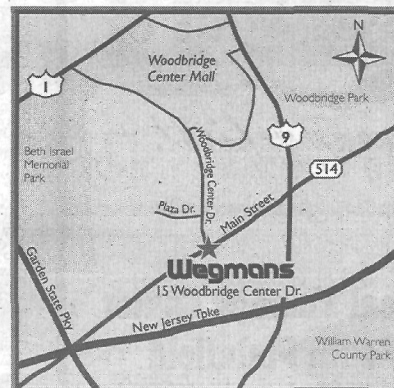
Need a little help planning
for the spring holidays?

Whether you're celebrating Easter or Passover, we'll have cooking coaches on hand to show you traditional dishes. And, you'll find lots of great ingredients to pull it all together.

- For Easter, we'll be pan searing fish. And we'll have bone in /boneless brown sugar cured hams, spiral sliced hams, leg of lamb, shrimp cocktail trays and much more.
- For Passover, we'll have family favorites like fresh briskets, kosher turkeys, flanken, smoked fish, and lots of other great choices.

Wegmans

helping you make great meals easy



15 Woodbridge Center Drive
Woodbridge, NJ
(732) 596-3200

Take the Garden State Parkway South to Exit 130; Take Route 1 North 1 mile and take a right on Woodbridge Center Drive. We're up about a mile on your right hand side!

Sports

WRESTLING

By Bob Hunter

Middle School Wrestlers Place at State Tournament

By Bob Hunter

South Plainfield Middle School wrestlers had a strong showing at the 2006 New Jersey USA Kids State Wrestling Tournament that was held in Egg Harbor. South Plainfield had four place winners, Nick Heilmann, Richie Szeliga, Troy Heilmann and Ryan Billich.

In the Junior division, Troy Heilmann wrestled in the 75-pound weight class and defeated Kevin Burton of Medham 8-4 in the opening round. Next he defeated Anthony Anzalone of Marlboro 6-1 and then defeated fourth seed Tyler Rehl of Phillipsburg by fall at 4:43. In the semi-final round, Heilmann lost to eventual champion Joe Orecchio of Pascack Hills 9-2. In the wrestle back semi-final round he defeated Brad Royle of Jackson 8-2. In the consolation finals Heilmann came out strong getting the takedown and putting Bryant Clagon of Toims River Wrestling Club to his back for the early lead that he never gave up. He cruised to a 13-5 major decision for third place.

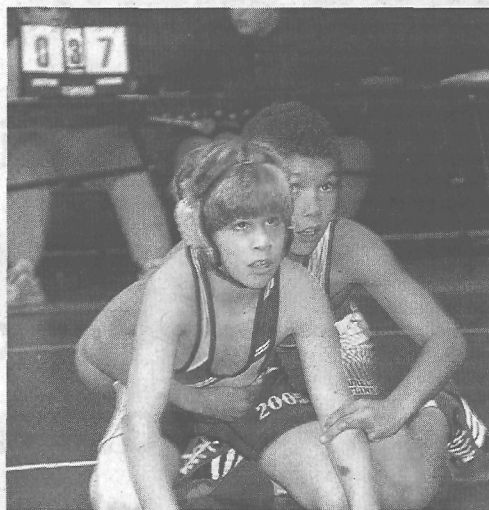
Ryan Billich wrestling at 119, lost his opening round match 7-0. Having to wrestle back, Billich came back strong, defeating Anthony Pare of Phillipsburg 7-0. In the medal round Billich lost to Ryan Sblendorio of Mahwah 7-4 which put him in a must win situation for fifth place. Not to be denied, Billich took the early lead and controlled Brian Campanale of Hillsborough to secure a 9-4 decision and a fifth place medal.

In the Intermediate division, Nick Heilmann (95) won his opening round match over Sam Pienrantrano of Pascack Hills 7-0 and then he defeated TJ Shea of Renegades 3-0. In the quarter final round Heilmann won by major decision 14-1 over Anthony Cuzzi of Middletown. In

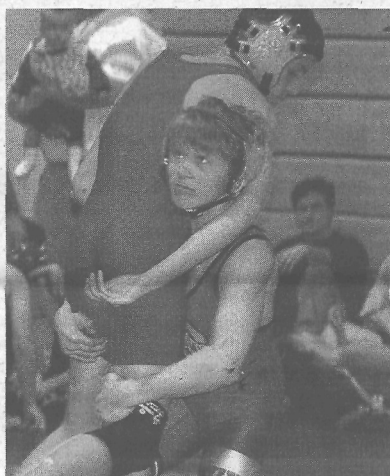
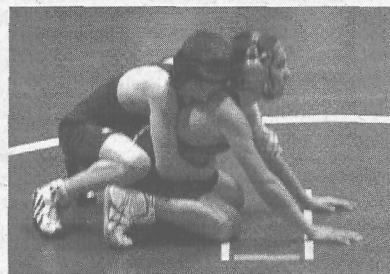
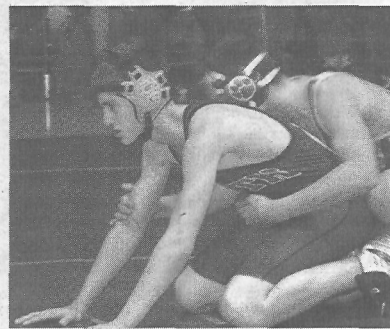
the semi-finals Heilmann was again very dominant winning by major decision 14-3 over Brian Bistis of Flemington. In the finals, Heilmann was in a battle with Frank Cagnina of Pascack Hills. At the start of the match Heilmann scored the first takedown, but at the end of the first period Cagnina escaped to make the score 2-1. Heilmann took down at the start of the second period and quickly escaped giving him a three 3-1 lead. That lead was short lived when Cagnina scored a takedown, tying the score 3-3. Again Heilmann escaped, taking a 4-3 lead. At the end of the second period Heilmann was awarded a takedown, but after a long debate at the scorer's table, it was decided that time had run out and the points were taken away. At the start of the third period Cagnina got an escape to tie the score at four apiece. With 10 seconds left in the match, Heilmann shot in. As they came out of a scramble Cagnina ended up getting the takedown and the win. This was the third time Heilmann finished in second place.

Richie Szeliga, wrestling in the 80 pound weight class, did not have much luck in the opening round as he lost 6-3 to Maurice Martin. Still in position to win a medal, Szeliga came roaring back in the wrestle backs, winning his first match by fall over Jake Caposela of Wayne at 2:54. He then defeated Brian Nelson of Wrecking Crew 5-2. In the medal round he defeated a very tough Damian Freeman of Paws Wrestling Club. With the score tied at the end of regulation 6-6, Szeliga had choice and elected to take the down position and scored the escape for a 7-6 overtime decision. After that battle Szeliga dropped his last match to Mike Intile of Pascack Hills for eighth place.

Congratulations to all the state qualifiers and state place winners on a job well done.



Pictured above and clockwise: Troy Heilmann (on bottom) attempts an escape in quarter final action. Ryan Billich (on bottom) waits for the action to start in his consolation round. Richie Szeliga bottom scores an escape in wrestle back OT victory. Nick Heilmann scores with a double leg takedown in semifinal action.



Freestyle & Greco Roman Wrestling Will Hold Signups

The South Plainfield Freestyle & Greco Team 2006 season is about to begin. This program is designed to enhance skills needed for scholastic wrestling. It is designed for the serious wrestler who wants to develop and maintain that competitive edge.

The Freestyle & Greco season begins Monday, April 10. You can sign up at the PAL between 8:30 a.m. and 4:30 p.m. Monday through Friday only. Practice will start at 5 p.m. and conclude at 6:30 p.m. at the PAL wrestling room. Practice will be held on Monday and Wednesday nights.

For questions or more information, call Bob Hunter at (908) 769-0439.



South Plainfield Football Eagles

Field House
753-6344
www.speagles.com

The Eagles—will hold registration on April 5, 6 and 7 at the field house on Kenneth Ave. from 6 to 8 p.m.

The Eagles are a non-profit organization that provide youth football and cheerleading programs for young people ranging from ages five to 15 years old. The program includes flag football for ages five through 7, five levels of tackle football based on age and weight for children 7 through 15 and six levels of Cheerleading for ages 5 through 15.

Since 1929, the Pop Warner program's philosophy has been that athletics and scholastics go hand in hand. At every level, Pop Warner programs seek to develop well-rounded

young men and women who learn not only the fundamentals of football, cheerleading, and dance but also the importance of education in an atmosphere conducive to developing sound character while having a good time.

The Eagles are part of Pop Warner's Mountain Valley Conference. The Mountain Valley Conference members are: Bridgewater-Raritan, Watchung Hills, Maplewood/South Orange, Washington Rock, South Plainfield, Somerville, Hunterdon Hills, Hillsborough, Montgomery Twp., Hopewell Valley and Flemington.

Practice season begins Aug. 1. All home games are played at the Eagles field house on Kenneth Ave.

Participation is limited due to maximum roster size. For information, visit our website at www.speagles.com. Join now!

RECREATION ANNOUNCEMENTS

T-Ball, Teener Ball, Pool Membership Sign-ups Ending

Registration ends on Friday, April 7 for Recreation sponsored T-Ball and Teener Ball.

Discount pool membership ends on April 17.

For more information, please call the Recreation Department at (908) 226-7713.

New Website

The Recreation Department is pleased to announce their new website: www.sprecreation.com. The new site is user friendly and has all the information on programs and procedures for any resident interested in a Recreation sponsored activity.

Upcoming Events

Tickets are on sale now for Yankees vs. Orioles @ Camden Yards on Sunday June 4 and Mets @ Phillies August 16.

Ready for a New GARAGE DOOR?

SAVE \$150 on your new garage door installation or 10% off lock work or garage repairs

ALL SECURE LOCKSMITH
Licensed • Bonded • Insured
732-855-6969

RESIDENTIAL • AUTO • COMMERCIAL
FREE ESTIMATES COUPON CODE: SP100

There's a New Lawyer in Town

Brenda Vallecilla, Esq.

• 100 Front Street • South Plainfield •
Corner of Maple and Front Street
(908) 756-2173; Daily 9-5
Evenings & Saturdays By Appointment

• Abogada Hispana • Todos Asuntos Legales •
Real Estate Purchase/Sale Business • Bus. Formation • Municipal Court
Tickets • Drugs/DWI • Divorce • Child Support • Work-Related Injury • SSI

PAIN?

Try therapy first.

Physical Therapy Center of South Plainfield
Theresa L. Conte P.T. Physical Therapist

(908) 668-1951
1110 Hamilton Blvd., South Plainfield

Celebrating 5 Years In South Plainfield

Orthopedic Rehabilitation • TMJ • Back & Neck Pain
Most Insurance Plans Welcome • Most HMO's / PPO's Accepted • Medicare Approved
SERVING UNION AND MIDDLESEX COUNTIES FOR OVER 15 YEARS

Obituaries

Joseph L. Spisso, 77

Joseph L. Spisso passed away peacefully on Sunday, March 26 at JFK Medical Center surrounded by his loving family whom he adored.

Mr. Spisso was born in South Plainfield and resided here all of his life.

Joseph served in the U.S. Navy during World War II.

Mr. Spisso was a police officer and sergeant for South Plainfield Police Department and a local businessman in South Plainfield where he was part owner of Normans Bar & Grill in addition to owning and managing Herms Restaurant, Helens Place, Spissos Disposal and Spissos Car Wash.

Joseph was a member of the South Plainfield Volunteer Fire Department and he was on the South Plainfield Planning Board in addition to being an avid golfer where he held memberships at both West Nine and Metuchen Country Club.

Mr. Spisso was a devoted son, husband, father, brother, grandfather, great-grandfather and uncle whose inspiration has touched everyone. Joseph will be sadly missed by his entire family, friends and all those who were lucky enough to have known him.

Joseph was predeceased by his loving parents who were so special to his heart, Louis and Concetta Spisso, and his brother Louis Spisso.

Mr. Spisso leaves behind his family consisting of his beloved wife of 55 wonderfully cherished special years, Helen Cannon Spisso of South Plainfield; a son, James Spisso of Burlington; four daughters and three sons-in-law, Sandi S. Connelly, Kathy and Alan Maglaque, Nancy S. and Michael Kurlew, Susan S. and Joseph Mantz, all of South Plainfield; a sister, Mitzi McGavick of Massachusetts; 10 grandchildren, Dana Connelly, Michael Kurlew and his wife Michelle, Marla Kurlew and her husband, Jimmy, Mathew Kur-

ilew, Joseph Maglaque, Kurtis Maglaque, Alan Maglaque, Jennifer Spisso, James Spisso and Nicole Spisso; two great-grandchildren, Michael Kurlew and Madison Geis, all of who will treasure the fond memories of Mr. Spisso for eternity and then some.

Funeral services were held at the South Plainfield Funeral Home.

The family kindly requests that memorial contributions be made in Mr. Spisso's memory to The St. Jude Children's Research Hospital, 501 St. Jude Place, Memphis, TN 38105.

Online condolences are appreciated and can be completed by accessing www.southplainfieldfuneralhome.com.

Joseph A. Versocki, 59

Joseph A. Versocki passed away peacefully on Monday, March 27 at Muhlenberg Regional Medical Center, with his loving and caring special friend who he adored more than words can say, by his side.

Mr. Versocki was born in Dumont and lived in Piscataway before moving to South Plainfield.

Joseph was an adaptive physical education teacher at South Plainfield High School before his retirement.

Mr. Versocki attended Eastern Tennessee State College where he received a bachelor's degree in teaching.

Joseph was the director of The Special Olympics in South Plainfield.

Mr. Versocki was the Grandmaster of Martial Arts and enjoyed training those such as military personnel and professionals, not to mention countless others that he taught about one of his many passions in his lifetime, that being the skill of martial arts.

Joseph was extremely proud of his numerous accomplishments in life, for example, the organizational

skills he possessed enabled him to set up many martial arts tournaments in South Plainfield. Mr. Versocki was in numerous Hall of Fames, where he received awards for his knowledge and expertise in martial arts.

One of Joseph's specialties was The Angelic System, which is a spiritual format of karate, and his involvement with the Don Mc Eaddy Circle of Masters.

There were numerous published books written which derived Joseph's knowledge of martial arts for the context of them.

Mr. Versocki was a part of the Screen Actors Guild, where he had a part on the television show Law & Order, and The David Letterman Show, which was one of Joseph's numerous proud accomplishments.

Joseph had a love for religious studies which he enjoyed to the fullest. After his retirement, Joseph was a security guard for BSS Security.

Mr. Versocki had an incredible positive spiritual impact on everyone who he encountered. His love for life was truly immeasurable and he will be treasured for eternity and then some.

Joseph will be sadly missed by his family, special friend Dolores, and countless friends that he had throughout his lifetime. The fond memories of Mr. Versocki are truly priceless and will be treasured forever and a year.

Mr. Versocki was predeceased by his loving parents, John and Dorothy Versocki and his brother, Jack Winters, who he cared about immensely.

Joseph leaves behind his beloved brother, Richard Versocki of Bedford, TX; a dear special friend Dolores M. Rose; a niece, nephew and several cousins, all of whom were so special to his heart and loved more than life itself.

Funeral services were held at the South Plainfield Funeral Home.

Memorial contributions may be made in the memory of Mr. Versocki to The Special Olympics, 1133 19th Street N.W., 12th floor, Washington, DC 20036-3604.

Online condolences are appreciated and can be completed by accessing www.southplainfieldfuneralhome.com.

"Treasure The Fond Memories."

LEGAL NOTICES

BOROUGH OF SOUTH PLAINFIELD
MIDDLESEX COUNTY, NEW JERSEY

LEGAL NOTICE

An appeal has been filed by James M. Boettcher requesting a variance from the requirements of the Zoning Ordinance of the Borough of South Plainfield to permit a second floor addition over existing house. Proposed 8 x 12 shed lacks 30' front setback from Clarke Ave., 20' being proposed; and other variances that may be required, said property being located at 2555 Linden Avenue on Block 82, Lot 15 on the South Plainfield Tax Map.

For the purposes of hearing objections to or protests against the granting of said appeal, the South Plainfield Zoning Board of Adjustment will hold a public hearing on Thursday, April 27, 2006 in the Council Chambers, Borough Hall, at 8:00 p.m.

The maps and documents pertaining to this appeal are available for public inspection in the Building Inspector's Office, South Plainfield Borough Hall, Monday through Friday, between 9:00 am and 5:00 pm.

\$38.50

April 7, 2006

Joseph H. Smith, 62

Joseph H. Smith passed away on Friday, March 31 at Mountainside Hospital in Montclair.

Born in Elizabeth, Mr. Smith has been a South Plainfield resident for most of his life.

He was a veteran of the United States Army, stationed in Germany prior to the Vietnam War.

The owner and operator of Joseph Smith Roofing and Siding of South Plainfield, the company was in operation from the 1960's to the 1980's.

He was a coach and sponsor of his former wife's softball teams, as well as a little league coach for his boys with the South Plainfield Junior Baseball Club.

He was predeceased by his father, Clifford D. Smith and his mother, Mary (Clemens) Smith.

Surviving are his daughter, Denise Stark of South Plainfield; two sons and their wives, Joseph and Sharon Smith of Ohio and John and Melissa Smith of South Plainfield; two sisters, Margaret Tiemeyer of South Plainfield and Mary Ann Fratelli of Piscataway and a brother, Clifford of Nutley.

Also surviving are five grandchildren, Gary and Vincent Stark, Emily and Jake Cooper and Holly Smith.

Funeral services were held at the McCriskin Home for Funerals.

Helen M. (Marciniak) Sulewski, 85

Helen M. (Marciniak) Sulewski passed away on Monday, April 3 at her daughters home.

Born and raised in Plainfield, Mrs. Sulewski had resided in Plainfield where she was the owner and operator, along with her husband, of the former Dolly Madison Store on Grant Avenue during the 1960's. She was known to the neighborhood as

"Mrs. Dolly Madison." Later residing in Dunellen, she returned to Plainfield and had resided in the Cedarbrook Apartments before settling in South Plainfield with her daughter.

Mrs. Sulewski had also worked at Winter's Bakery, the Park Avenue Bakery and the Clinton Bakery, all in Plainfield.

A former communicant of St. Stanislaus RC Church in Plainfield, she was also a member of their Altar Society and the Dunellen Senior Citizens. But most important was her commitment to her children and family.

Her husband, John, died in 1966. She is also predeceased by her eight brothers and sisters.

Surviving are her children, daughter Patricia and her husband Bill Taber of South Plainfield; four sons and their wives, John Jr. and Sylvia of Dunellen, Steve and Maribeth of South Plainfield, Robert and Ginny of Hellertown, Pa. and Ronald and Judy of Howell.

Also surviving are her fourteen grandchildren, Matthew, Meghan, Jon, Tori, Heather, Steven, Siever, Chris, Gina, Michael, Matthew, Joseph, Danny and Joy. In addition, she has four great-grandchildren.

Funeral services were held at the McCriskin Home for Funerals.

In lieu of flowers donations may be made to the Muhlenberg Regional Medical Center ICU, C/O Park Avenue and Randolph Road, Plainfield, NJ 07060.

Nancy (McGlone) Williams, 83

Nancy (McGlone) Williams passed away on Thursday, March 30 in the Haven Hospice at Muhlenberg Regional Medical Center in Plainfield.

Funeral services were private and held under the direction of the McCriskin Home for Funerals.

The Hillside Cemetery Association

1401 WOODLAND AVE., P.O. BOX 360

SCOTCH PLAINS, NJ 07076

908.756.1729 PHONE 908.756.2484 FAX

For additional information, please fill out form below and mail or fax to us

NAME _____

ADDRESS _____

CITY, STATE, ZIP _____

We are a non-profit, non-sectarian cemetery.
Please visit our new website www.hillsidecemetery.com

Junior Journalist

WINNER



Junior Journalist winner Alyssa Kelly accepts dinner from Charlie and Debbie Kurland of Hometown Heros. She is joined by Dad Tim, Mom Karen and brother Patrick. Congratulations!

(908) 561-8000



HOME FOR FUNERALS, LLC

2425 Plainfield Ave., South Plainfield, NJ 07080

"An Independent, Family Owned & Operated Funeral Home"

PRE ARRANGEMENTS • S/S MEDICAID PROTECTION • CREMATION SERVICES

Richard W. McCriskin, Mgr., N.J. Lic. No. 3147
William C. McCriskin, N.J. Lic. No. 3382

James A. Gustafson, N.J. Lic. No. 4205
Richard W. McCriskin II, N.J. Lic. No. 4564



www.mccriskinfuneralhome.com

Fax (908) 561-6744



SOUTH PLAINFIELD FUNERAL HOME
2456 Plainfield Ave., So. Plainfield
908-756-2800

Independently owned & operated since 1949
Advanced Planning • Dignified Burial & Cremation Options
Services tailored to Your Needs • Monument & Marker Assistance



Tamara Hawbaker, Mgr. NJ Lic No 4577
Lisa LoRico Sharp NJ Lic No 3710
Thomas Adamcnc NJ Lic No 4319

Flexible
Payment
Options

Sports



Pictured from left to right are the Level 5 Team: Coach Victoria, Amina Grant, Emilie Berman, Tatiana Nealy, Danielle DeVizio (South Plainfield), Nicole Sottiriou (South Plainfield), Lindsey Scarmazzino, Michelle Stoeckel (South Plainfield), Bobbi Spiegel, Alyssa Fernandez and Coach Beth.

La Gymnastique Takes First Place At "Buckeye Classic"

La Gymnastique's competitive girls gymnastics team traveled to Columbus, Ohio to attend the annual Blackeye Classic Gymnastics Competition. Opening ceremonies consisted of over 1,800 gymnasts from all over the United States and Canada.

After a ten hour bus ride, the girls enjoyed a fun-filled weekend together. They spent their free time watching other competitors and meeting former Olympians before it was their time to compete early Sunday morning.

The Level 5 team has had a great season, but nothing could be better than coming home with the first place team plaque from one of the biggest

gymnastics meets in the country. All of the girls performed to the best of their abilities, in which they all received medals for placing in at least one event throughout the competition. This, along with taking home the First Place Level 5 team title, made for a happy homecoming for everyone.

The girls train five days a week, three to four hours a day at Henderson's Gymnastics Academy in Edison. Their dedication, along with hard work, has reaped its reward. The team will continue to compete throughout the season and begin to prepare for States.

Congratulations girls. Good luck La Gymnastique.

Calling High School Senior Girls-It's Scholarship Time

As you may or may not know, the Parent's Ponytail (Softball) Association is sponsoring three \$500 college scholarships. Applications are currently being accepted and can be obtained from the South Plainfield High School Guidance office.

To qualify for the scholarships, applicants must be high school seniors graduating this June and current residents of South Plainfield.

To qualify for one of the two recreation scholarships, applicants must have played for a minimum of four years in the South Plainfield Recreation Department Ponytail Softball League.

To qualify for the Ponytail All-Star scholarship, applicants must have played South Plainfield recreation softball for a minimum of four years and South Plainfield Ponytail All-Stars for a minimum of three years. All-Star players may apply for both the recreation and All-Star scholarships; however, a player is eligible to receive only one scholarship. The application must be received no later than May 5.

All completed applications can be mailed to SPPPA Scholarship, P.O. Box 441, South Plainfield, NJ 07080 or returned to SPHS guidance office in a sealed envelope labeled SPPPA Scholarship. Verification of school enrollment is required prior to funds being awarded. Send in applications as soon as possible. Best of luck to all.

By GLENN CULLEN

JUNIOR BASEBALL CLUB NOTES

Opening Day is here! This year's grand marshal is Tulio (Cappy) Capparelli. The SPJBC parade is scheduled for April 8 at 10 a.m. This year there will be a different route. The parade will start on Belmont Ave. and proceed down to Delmore Ave. and then Lorraine Ave. All players should meet at Roosevelt School at 9:30 a.m. Opening day ceremonies will begin at 10:30 a.m. at Field #2. Team pictures will take place after the parade. Please look at your scheduled team picture time.

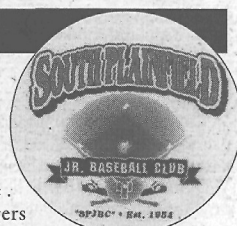
The SPJBC Woman's Auxiliary will hold a bake sale on Opening Day. All parents are asked to drop off a baked good at 9 a.m. at the clubhouse.

Manager selections for the 2006 Traveling All-Star Teams have been

made. Managers by age group are as follows:

- 8 & Under - Gary Lampasona;
- 9 & Under - Mike Pellegrino;
- 10 & Under - Glenn Cullen;
- 11 & Under - Jack Brady;
- 12 & Under - Jeff Marcoux;
- 13 & Under - Lee Flanagan.

The SPJBC is still looking for volunteers for the 2006 season. In particular, the SPJBC needs Snack Stand captains. Anyone interested in being a Snack Stand captain is asked to call the SPJBC at (908) 754-2090 or e-mail the club at www.southplainfieldjbc@yahoo.com. Also, feel free to visit the SPJBC website at www.leaguelineup.com/spjbc.



South Plainfield Food Pantry Open To Those in Need

The South Plainfield Food Pantry is open to all residents who find themselves in need of food during the upcoming holiday season.

The food pantry is located in Borough Hall. Food may be picked up during the week between the hours of 9 a.m.-noon and 2-4 p.m.

For further information, please call (908) 226-7625.

Pathak & Shah, LLP

Attorneys & Counsellors at Law

51 Cragwood Road, Suite 102
South Plainfield, NJ 07080

Phone: (908)769-7000

Facsimile: (908)769-7774

www.ps-legal.com

Please patronize our advertisers.

LEGAL NOTICES

BOROUGH OF SOUTH PLAINFIELD
MIDDLESEX COUNTY, NEW JERSEY

LEGAL NOTICE

BE IT RESOLVED BY THE GOVERNING BODY OF THE BOROUGH OF SOUTH PLAINFIELD, NEW JERSEY, THAT:

WHEREAS the Borough previously removed underground storage tanks at the former gas station at New Market Avenue and as part of the original removal plan must continue to monitor that site; and

WHEREAS the Borough appointed an environmental engineering firm pursuant to a fair and open process in accordance with N.J.S.A. 19:44A-20.4 et seq; and

WHEREAS the Borough's environmental engineer, PMK Group, has submitted a proposal in the amount of \$31,000.00 to perform said services; and

WHEREAS this contract is being awarded without competitive bidding as "Professional Services" in accordance with N.J.S.A. 40A:11-5(f) (a); and

WHEREAS funds have been certified by the Chief Financial Officer and will be made available in the Capital Improvement Fund account # C-04-55-634-002-901;

NOW THEREFORE BE IT RESOLVED BY the Governing Body of the Borough of South Plainfield that authorization is hereby given to enter into a professional services contract with PMK Group in the amount not to exceed \$31,000.00 for the continued monitoring of the former gas station site at on New Market Avenue.

ATTEST:
Vincent Buttiglieri/Municipal Clerk

\$47.50 April 7, 2006

BOROUGH OF SOUTH PLAINFIELD
MIDDLESEX COUNTY, NEW JERSEY

LEGAL NOTICE

March 29, 2006

Public Notice is hereby given that the following action was taken by the South Plainfield Planning Board at its meeting held on March 28, 2006.

A. Case #05-05/M/V-Jacob Minarck. Block 148; Lot 29; 1529 Dumont Avenue. The applicant's request for minor sub division approval w/a bulk variance was hereby GRANTED subject to additional voluntary conditions.

B. Case #05-08/M-Enrico Pigna. Block 231; Lot 21; 3180 Park Avenue. The applicant's request for minor sub division approval was hereby GRANTED subject to additional voluntary conditions.

Respectfully Submitted,
Mary Beth Knide
Planning Board Secretary

\$30.40 April 7, 2006

BOROUGH OF SOUTH PLAINFIELD
MIDDLESEX COUNTY, NEW JERSEY

LEGAL NOTICE

ORDINANCE 1729

BE IT RESOLVED BY THE GOVERNING BODY OF THE BOROUGH OF SOUTH PLAINFIELD, MIDDLESEX COUNTY, NEW JERSEY, THAT:

Ord. 1729 entitled: AN ORDINANCE APPROPRIATING \$360,000 FOR VARIOUS CAPITAL IMPROVEMENTS SPECIFICALLY THE ROAD RESURFACING PROGRAM, DURHAM AVENUE ROAD WIDENING AND THE VARIOUS ACQUISITIONS FOR THE HAMILTON BOULEVARD AND LAKEVIEW AVENUE PROJECTS be adopted on first reading and advertised in The Observer on Friday, April 7, 2006 and that a public hearing be scheduled for Monday, April 17, 2006 at 8:00 p.m. in the Municipal Building, 2480 Plainfield Avenue, South Plainfield, NJ 07080.

ORDINANCE NO. 1729

AN ORDINANCE APPROPRIATING \$360,000.00 FOR THE ACQUISITION OF VARIOUS IMPROVEMENTS WITHIN THE BOROUGH OF SOUTH PLAINFIELD, COUNTY OF MIDDLESEX, STATE OF NEW JERSEY

BE IT ORDAINED BY THE GOVERNING BODY OF THE BOROUGH OF SOUTH PLAINFIELD, NEW JERSEY as follows:

Section 1. That there is hereby authorized pursuant to applicable statutes of the State of New Jersey, as a general improvement, the following improvements in the Borough of South Plainfield, County of Middlesex, New Jersey:

Acquisition of Properties & Easements
along Hamilton Blvd, Maple Ave
and Lakeview Ave \$ 25,000.00
2006 Road Resurfacing \$35.00

Program 210,000.00

Durham Avenue Road

Improvements 125,000.00

TOTAL \$360,000.00

Section 2. That the improvements described in Section 1 hereof shall be authorized as general capital improvements for the Borough of South Plainfield in the County of Middlesex, New Jersey.

Section 3. It is hereby determined and declared by this Mayor and Borough Council as follows:

A. That the maximum estimated amount of money to be raised from all sources for the purposes stated in Section 1, hereof, is \$360,000.00.

B. That the cost for said projects shall be financed by a \$175,000.00 Special Purpose Grant from the State of New Jersey; \$36,000.00 from Off-Tract Improvements and \$24,000.00 from the Capital Improvement Fund

C. The estimated useful life of said improvements is hereby determined to be fifteen (15) years.

Section 4. That the total amount of the appropriation to be expended for Architectural and inspection costs, legal costs, advertisement of ordinance and other expenses as provided in Section 48-2.20 of the Revised Statutes, is not to exceed \$54,000.00.

Section 5. This ordinance shall take effect after final passage and publication in accordance with the law.

ATTEST:

Vincent Buttiglieri/Municipal Clerk

\$35.00 April 7, 2006

BOROUGH OF SOUTH PLAINFIELD
MIDDLESEX COUNTY, NEW JERSEY

LEGAL NOTICE

An appeal has been filed by Christopher Greco requesting a variance from the requirements of the Zoning Ordinance of the Borough of South Plainfield to permit a mother/daughter not a permitted use. Proposed new porch with roof lacks 30' required front setback; 18.3' being proposed. Proposed new side addition (2-story) 625 x 24.75 lacks 8' required side setback; 4.5' being proposed. Proposed second floor addition over existing house lacks 8' side; 4.5' proposed; and other variances that may be required, said property being located at 135 Jerome Avenue on Block 211, Lot 12 on the South Plainfield Tax Map.

For the purposes of hearing objections to or protests against the granting of said appeal, the South Plainfield Zoning Board of Adjustment will hold a public hearing on Thursday, April 27, 2006 in the Council Chambers, Borough Hall, at 8:00 p.m.

The maps and documents pertaining to this appeal are available for public inspection in the Building Inspector's Office, South Plainfield Borough Hall, Monday through Friday, between 9:00 am and 5:00 pm.

\$38.50 April 7, 2006

Search legal notices in New Jersey
at www.legalnotices.com.

Where do South Plainfielders look when they want to improve? They look local. That's why our advertisers report consistent and effective results with the Business & Professional ads.

Let us help you grow your business.

Advertise in the Observer.
908-668-0010

For Your Information...

ENCOURAGE YOUR ORGANIZATION TO SEND US THEIR UPCOMING EVENTS. Make your event more successful by publicizing it in AROUND TOWN.

SEND US YOUR MILESTONES. Share your good news with the community, i.e. promotions, births, engagements, weddings, anniversaries, graduations. Include photos if you like.

IS THERE IS SOMEONE YOU KNOW WHO MAKES A DIFFERENCE IN SOUTH PLAINFIELD? Let us know.

USE THE OBSERVER AS AN ADVERTISING TOOL. Introduce your business to the community. Promote your specials. Residents would rather patronize local businesses than travel out of town. It is more convenient and it's good for the local economy.

SUGGEST A BUSINESS FOR US TO SPOTLIGHT. If you've had great service in South Plainfield, share it with your neighbors through the newspaper.

SUBMIT LETTERS TO THE EDITOR
to allow readers to discuss and react to issues.

SEND US YOUR PHOTOS. If you have an event, take a photo, write a caption identifying the event and people and send it to us. The best photos record action and don't include so many people that it's impossible to identify anyone. Please don't send us photocopies or laser prints. They don't reproduce well. Digital photos should be 150 dpi or higher.

HOW TO CONTACT US. 1110 Hamilton Blvd., Suite 1B, South Plainfield, NJ 07080; phone: 908-668-0010; fax: 908-668-8819 or email: spobserver@comcast.net.

SUBSCRIBE. It's \$25. (in town) and \$30 (out of town) for one year.

908-668-0010
fax 908-668-8819
email: spobserver@comcast.net

Your #1 Source for South Plainfield News

IN YOUR OPINION

(Continued from page 2)
of funding from Trenton.

I believe the amount of funding we received this year fell way short of what we are entitled to, and I am committed to seeking more through fair share funding and by encouraging our municipal and county officials to share services with the Board of Education.

Most importantly, I believe all this can be accomplished with the involvement of all stakeholders: parents, residents, staff and students working as a team.

On April 18, vote Line 4.
**THANK YOU,
ERNIE "JIM" GIANNAKIS**

To the Editor:

The South Plainfield Board of Education has asked Mr. Randall McCann to write another letter to the editor correcting the inaccuracies in his letter of March 24, 2006. Since Mr. McCann has refused to write a retraction, the South Plainfield Board of Education is writing this letter and attaching a copy of the public document containing the Statement of the Case and Procedural History of the case, which was decided and closed on November 9, 2005. Please note that the teacher's name has been omitted to protect her privacy.

(Editors Note: The following is excerpted from "Statement of the Case and Procedural History" as provided to the *Observer* in full from the South Plainfield Board of Education and edited for length.)

Based upon Randall McCann's (Petitioner) conduct on July 11, 2003, the South Plainfield Board of Education (Respondent) determined when entering a school facility Petitioner would have to (1) sign in and out of the facility if the facility had such a procedure and (2) if no such procedure existed, Petitioner had to notify an administrator of the facility that he was on the premises. Such a situation would typically occur after hours when the staff at the main office has

left for the day. That requirement is the issue in this case; namely, whether the Board acted arbitrarily and capricious in imposing this requirement on Petitioner.

Based on the testimony and evidence provided at the hearing, I find the following facts: In July 2003, Petitioner was employed by a summer theater workshop program, that is not affiliated with the Board, but simply uses school property. On July 11, 2003, he was working at South Plainfield High School.

A woman on July 11, 2003, was also at the high school. She is a teacher for the district and that summer she was working as a camp director for a youth basketball camp run by the South Plainfield Recreation Department. She was cleaning a boys' bathroom in the high school because two of the children at the camp reported to her that it was a mess. There was nobody in the bathroom at the time. Then, Petitioner walked in to the bathroom. The teacher immediately told Petitioner she was the camp director, that she was cleaning up the bathroom and that she would be done in a minute or two. Petitioner responded that he "really had to go". The teacher repeated that she would just be a minute and asked Petitioner to leave. Petitioner refused to leave or wait.

Petitioner proceeded to the toilet and, just after taking a few steps past the teacher he began unzipping his pants. At this time, Petitioner was only a few feet away from the teacher. The teacher felt violated by Petitioner's actions and immediately proceeded to leave the bathroom. Prior to her actually leaving, Petitioner began urinating.

After the basketball camp concluded for the day, the teacher went and located Kenneth May, then assistant principal, and reported the incident to him. Two police officers arrived and took a statement from Petitioner. The Petitioner told the police that even if the teacher's account of

what happened was true, that there is no crime for unzipping your fly near a woman. According to Rosado, the police told him that Petitioner clearly did not appreciate the gravity of his actions. The police report notes Petitioner's "lack of judgment".

Based on this incident, Rosado imposed a requirement on Petitioner that if a school facility does not have a sign in/out procedure (because it is after hours or for any other reason), then Petitioner must notify a school administrator he is on the premises. Rosado imposed this requirement because of Petitioner's blatant disregard of the woman's request to wait until she left the bathroom before he urinated, his complete lack of judgment and respect and because of what the police officers relayed to him about Petitioner's lack of judgment. This policy still remains in effect. Rosado testified that he would have revoked this policy if Petitioner simply would have apologized and appreciated that what he did was wrong.

Petitioner denied that he did in fact unzip his pants in front or near the teacher. He testified that she had left the bathroom when he unzipped his fly. He, however, did not say that he heard the door shut prior to unzipping his pants and urinating.

Determining credibility can be tricky, however, in this case it was very easy. Simply put, Petitioner had no credibility and the teacher was completely credible. The teacher was detailed, genuine and straightforward in her testimony. Her testimony was consistent with the other evidence presented at the hearing. She was simply doing her job when this happened and I do believe this incident upset her very much. Petitioner, on the other hand, was arrogant, hesitant and inconsistent in his testimony. There is no credible evidence that he even denied this incident took place when questioned by police. Moreover, although he testified that he didn't unzip his pants until after the teacher left

the bathroom, he said he unzipped his pants without hearing the door shut. Most amazingly, Petitioner testified that even if he did unzip his pants near the teacher that it is not a big deal since he didn't expose himself and it is not a crime. It is troubling that Petitioner doesn't appreciate that his actions would cause this teacher or any other woman to be upset.

The testimony and documents also

established that all parents and visitors to school buildings with sign in and sign out procedures, must in fact sign in and out when entering and leaving a school building. Petitioner must do this like all parents and visitors. Furthermore, Petitioner has not been denied the opportunity to participate in any school activities.

**THE SOUTH PLAINFIELD
BOARD OF EDUCATION**

KUMON

MATH. READING. SUCCESS.

Edison II Center

Kim Cho & Edward NS Cho

3600 Park Ave., Unit K • South Plainfield

Tel. (908) 753-0111

Fax (732) 548-9113

*You deserve it... take a
mini vacation with Marty.*

where you are always treated like one of the family
Carousel

307 Oak Tree Ave.

"The Manicure"

Choose "Hot Oil" manicure,
complete with hand & arm
massage OR "Paraffin Dip"
& regular manicure - \$16
(Seniors \$15 • Paraffin Dip Only \$7)

"The Facial"

Includes skin analysis,
cleansing, hot towels, steam,
peel, extraction, face massage,
decollete & mask - customized
to the client's needs - \$50
(No hidden costs.)

908-668-8397

Flexible hours to suit your needs
Open Wednesday-Saturday
Gift Certificates Available

**Coming Soon:
HOUSE CALLS**

FOUR SEASONS NURSERY & LANDSCAPE DESIGN CENTER

430 Hamilton Boulevard, South Plainfield

Arriving Daily

New

Selection of Nursery Stock

Bulk Sales • Top Soil • Mulch • Stone • Rubber Mulch
All Landscape Materials • Delivery Available

**One Stop
Call For
All Your
Needs**

COMPLETE LANDSCAPE SERVICES

Retaining Wall Systems Decorative Walls, Pavers
Driveways, Walkways, Patio Drainage Systems

Open 7 Days

908-757-4646

GROVE
SINCE 1947

**LOCK &
SAFE CO.**

RESIDENTIAL • COMMERCIAL • INDUSTRIAL

Locks Rekeyed & Combination Changes
Computerized Master keying System
Auto Locks Repaired and Replaced

COMMERCIAL DOORS & FRAMES

Hollow Metal Doors & Frames, Fire Doors,
Replacement Doors ~ Stock or Custom

Factory Authorized • Insured & Bonded

Most Models in Stock

Reconditioned Safes Available

"Over 50 Years of Quality Service and Dedication"

Sales... Opened, Service, Repaired

VISA MasterCard

(908) 756-4887 PLAINFIELD Weekdays 8:30am-5pm
8 Grove Street (Corner of Front and Grove) Saturdays 9am-2pm

Second Historic Marker Announced

(Continued from page 3)

present-day Crescent Parkway to construct a Meeting House. While the Laings also owned property along Woodland Avenue, the Quaker Meeting House appears on both the Clinton British military maps and the Erskine American military maps of the period to be located at the site of the Community Pool. A map by C.C. Vermeule, "Battlegrounds of the Revolution," also shows the Meeting House at this location. Furthermore, when constructing the parking lot for the swimming pool, construction crews encountered graves which may have been those shown in the picture contained in *The American Revolution* in New Jersey, a Pictorial Essay edited by Edgar and Betty Bradbury Vail. This photo is described as a "pre-Revolutionary burying ground" on the land of the "Holly Farm." What may be Holly Pond is in the picture's background.

Around 1906, the Holly Farm was sold to Milton Mendel who sold it to the Helmer family in 1922. Mrs. Carmen Helmer Smith grew up on Holly Farm and confirms in her oral history interview the existence of the

headstones, as do others of her generation, many of whom were Boy Scouts who camped in the immediate area. Because Quakers buried near their Meeting House, and because there is no evidence of a cemetery on Woodland Avenue, Randolph is certain that this is the correct site of the original Quaker Meeting House.

Eventually the Friends outgrew the Meeting House. In 1788, they constructed a new building (which is still in use) on Watchung Avenue in Plainfield. It was said that the move to Plainfield was necessitated by a lack of space to enlarge their structure on the Laing land. The military maps cited above show the Meeting House as located on a small knoll bounded by swampy ground on two sides which would have limited expansion. Some of the topography from the Revolutionary War period has survived decades of residential development. Part of the original knoll still exists, and photographs taken in the 1920s by the Helmers confirm that the area was swampy.

No date has been set for the presentation of the Quaker Meeting House historic marker. The South Plainfield

Historical Society has also nominated the New Brooklyn Grist Mill and the Revolutionary War encampment site of Gen. Conway. The Nike Base, Drake's Crossing and the Lehigh Valley Railroad Perth Amboy line will be nominated in the near future.

To learn more about local history, Log on to <http://geocities.com/sphistoricalociety>

The next meeting of the Historical Society is April 11, 7:30 p.m. at The History Center, Roosevelt School Administration Building, 125 Jackson Avenue.

Benefit Dinner For Alyssa Marie Ricciardi

Friends and family of Alyssa Marie Ricciardi, age 2, are sponsoring a dinner in her honor to help the family with the costs associated with her battle with cancer.

The dinner will be held on May 7 from 5-9 p.m. at the American Legion Post, 243 Oak Tree Rd. Tickets can be purchased from the following businesses: Twin City Pharmacy, 1705 Park Ave.; Our Town Deli, 100 South Plainfield Ave., or Sals Spirit Shoppe; or they can be purchased at the door. Ticket price is \$40 for adults and \$10 for children under 12.

Seating is limited; please purchase your tickets early. If you are unable to attend, but would like to make a donation, please make checks payable to Alyssa Ricciardi Trust Fund and send to one of the businesses listed above.

For more information please contact Maggie (908) 464 0498 or Janet (908) 561-0982.

BOROUGH NOTES

Accept the resignation of part-time recreation attendants Dennis Keane and Kevin Hohner effective immediately.

Authorize the Mayor and Municipal Clerk to execute the Lease Agreement with the South Plainfield Junior Baseball Club for the use of various Borough properties for recreational purposes.

Request Middlesex County to de-

clare New Market Avenue and South Clinton Avenue as an Alternate Truck Route through the Borough of South Plainfield.

Approve the waiver of all fees, except electrical, for the Feast of St. Anthony held at Our Lady of Czestochowa which will be held from June 6 through June 10, 2006.

Authorize the appointment of Travis J. Noll as a Volunteer Firefighter.

LEGAL NOTICES

BOROUGH OF SOUTH PLAINFIELD
MIDDLESEX COUNTY, NEW JERSEY

LEGAL NOTICE
ORDINANCE 1726

BE IT RESOLVED BY THE GOVERNING BODY OF THE BOROUGH OF SOUTH PLAINFIELD, MIDDLESEX COUNTY, NEW JERSEY, THAT:

Ord. 1726 entitled: AN ORDINANCE SUPPLEMENTING THE ZONING ORDINANCE OF THE BOROUGH OF SOUTH PLAINFIELD, 1992, TO PROVIDE REGULATIONS OF MAINTENANCE OF AFFORDABLE HOUSING UNITS be adopted on first reading and advertised in The Observer on Friday, April 7, 2006 and that a public hearing be scheduled for Monday, April 17, 2006 at 8:00 p.m. in the Municipal Building, 2480 Plainfield Avenue, South Plainfield, NJ 07080.

ORDINANCE NO. 1726

AN ORDINANCE SUPPLEMENTING THE ZONING ORDINANCE OF THE BOROUGH OF SOUTH PLAINFIELD, 1992, TO PROVIDE REGULATIONS OF THE MAINTENANCE OF AFFORDABLE HOUSING UNITS.

\$1208 General Affordable Housing Provisions

A. Title

This chapter shall be known and may be cited as the "Affordable Housing Ordinance of the Borough of South Plainfield."

B. Purpose

The purpose of this chapter is to establish a mechanism for assuring that housing units designated for occupancy by low and moderate income households remain affordable to and occupied by low and moderate income households.

C. Definitions

The following terms, wherever used or referenced to in this chapter, shall have the following meanings unless a different meaning clearly appears from the context: ADMINISTRATIVE ENTITY:

The agency responsible for ensuring that housing units are restricted and affordable to low and moderate income households. The agency shall also be responsible for ensuring that housing units are occupied by income eligible households, unless otherwise excepted by this Chapter.

AFFORDABLE HOUSING PLAN:

An instrument to be recorded with the office of the Recorder, Middlesex County, New Jersey, constituting restrictive covenants running with the land with respect to the low and moderate income units described and identified in such instrument. The instrument shall set forth the terms, restrictions and provisions applicable to the low and moderate income units and shall be consistent with this chapter concerning use, occupancy, sale, resale, rental, re-rental, sales price and rental determination, duration of restrictions, exempt transactions, hardship exemptions, foreclosure, violation, legal description of the specific low and moderate income units governed by the instrument, determination of eligible purchasers and owners, responsibilities of owners and improvements and creating the liens and rights of the Administrative Entity upon such low and moderate income units, authorizing the Administrative Entity or, in the alternative, South Plainfield Borough to enforce the restrictive covenants referred to herein, all as such provisions of this chapter exist at the time that the instrument is executed by the Administrative Entity. The terms, restrictions, and provisions of the instrument shall bind all purchasers and owners of any low and moderate income units, their heirs and assigns and all persons claiming by, through or under their heirs, assigns and administrators. If a single instrument is used to govern more than one (1) low and moderate income unit, then the instrument must identify the location of each low and moderate income unit governed by the instrument, and the deed of each and every individual low and moderate income unit so governed must contain the recording information of the instrument applicable to such low and moderate income units. The instrument shall be executed by the Administrative Agency prior to recording of the Affordable Housing Plan. The instrument shall also be executed by the developer and /or the then current title holder of record of the property upon which the low- and moderate-income units are to be constructed.

ASSESSMENTS:

Taxes, levies, charges or assessments both public and private, including those imposed by the association, as the applicable case may be upon the low and moderate income units which are part of the association.

COAH: The Council on Affordable Housing.

DEVELOPMENT FEES:

Money paid by an individual, person, partnership, association, company or corporation for the improvement of property as permitted by N.J.A.C. 5:93-8 et seq.

EQUALIZED ASSESSED VALUE:

The value of a property determined by the municipal tax assessor through a process designed to ensure that all property in the municipality is assessed at the same assessment ratio or ratios required by law. Estimates at the time of building permit may be obtained by the tax assessor utilizing estimates for construction cost. Final equalized assessed value will be determined at project completion by the municipal tax assessor.

FIRST PURCHASE MONEY MORTGAGE:

The most senior mortgage lien to secure repayment of funds for the purchase of low and moderate income units.

FIRST PURCHASE MONEY MORTGAGEE:

The holder and/or assigns of the first purchase money mortgage and which must also be an institutional lender or investor, licensed or regulated by a state or federal government or an agency thereof. Other lenders, investors or persons may be holders of a first purchase money mortgage; however, for the purposes of this chapter, such other lenders, investors, or persons shall not be "first purchase money mortgagees."

FORECLOSURE:

A termination of all rights of the mortgagor or the mortgagor's assigns or grantees in a low and moderate income unit covered by a recorded mortgage through legal processes, or through a deed in lieu of foreclosure which has been executed and delivered prior to a judicially regulated sale.

GROSS AGGREGATE HOUSEHOLD INCOME:

The total annual income from all sources of all members of the household or family, except income received by a family household member (other than the family head, spouse or foster child) who is under the age of eighteen (18) years or a full-time student of any age. Income includes, but is not limited to compensation for employment services, interest, dividends, rent, pension benefits, government benefits, unemployment compensation, welfare payments, disability income, support payments and return-on-assets income as defined herein.

HOUSEHOLD:

One (1) or more persons living as a single nonprofit housekeeping unit, whether or not they are related by blood, marriage or otherwise.

HOUSING TRUST FUND:

The interest bearing account in which all development fees will be deposited pursuant to N.J.A.C. 5:94-6.11.

IMPROVEMENT:

Additions within a low and moderate income unit, including materials, supplies, appliances or fixtures which become a permanent part of, or affixed to, such low and moderate income units.

INCLUSIONARY DEVELOPMENT:

A development containing low and moderate income units, the term includes, but is not necessarily limited to, new construction, the conversion of a non-residential structure to a residential structure, and the creation of new low and moderate income units through the substantial rehabilitation of a vacant residential structure.

INCOME CEILING:

Eighty percent (80%) of the regional median income for moderate income households and fifty percent (50%) of the regional median income for low income households, with adjustments for household size.

JUDGMENT OF REPOSE:

A judgment entered by the Superior Court approving a municipality's plan to satisfy its fair share obligation.

LOW INCOME HOUSEHOLD:

A household with a gross aggregate household income which does not exceed fifty percent (50%) of the regional median income, with adjustments for household size.

LOW-INCOME PURCHASER:

A low income household purchasing either a low income unit or a moderate income unit, as the case may be.

LOW INCOME UNIT:

A unit which is affordable to a low income household.

MARKET UNIT:

Any residential unit within a development which is not designated as a low and moderate income unit.

MODERATE INCOME HOUSEHOLD:

A household with a gross aggregate household income which is greater than fifty percent (50%) of the regional median income, but which does not exceed eighty percent (80%) of said regional median income, with adjustments for household size.

MODERATE INCOME PURCHASER:

A moderate income household purchasing a moderate income unit.

MODERATE INCOME UNIT:

A unit which is affordable to a moderate income household.

NET FAMILY ASSETS:

The value of equity in real property, including gains from the sale of real property, savings and other forms of capital investment, but not including equity in a business or farm operation where that business or farm operation is the principal means of support of the household, amounts in an irrevocable trust fund or the value of personal property (e.g., car, furniture, etc.).

OWNER:

The then current title holder of record of a low or moderate income unit. "Owner" shall refer to and mean the titleholder of record as the same is reflected in the most recently dated and recorded deed for the particular low and moderate income unit. For purposes of the initial sale or rental of any low or moderate income unit, "owner" shall include the developer/owner of the land upon which the low and moderate income unit is to be constructed. Ownership of a low and moderate income unit shall be deemed to be acceptance and ratification of the provisions of this chapter and the Affordable Housing Plan. Where appropriate, the term "owner" shall also mean and refer to a person who owns a low and moderate income unit as a landlord or who occupies a low and moderate income unit as a tenant. "Owner" shall not include any cosigner or co-borrower on any purchase money mortgage unless such cosigner or co-borrower is also a named title holder of record of such low and moderate income unit.

QUALIFIED PURCHASER:

A person who, pursuant to this chapter and the Affordable Housing Plan, submits an application for certification as a qualified purchaser to the Administrative Entity and whose gross aggregate household income at the time of proposed purchase of a low and moderate income unit is within low and moderate income levels, as these income levels are designated herein, and in the case of a development unit, the approval from a lending institution meeting the minimum qualifications set forth herein for issuance of a commitment for a mortgage to purchase a low and moderate income unit is within low and moderate income levels, as these income levels are designated herein, and in the case of a development unit, the approval from a lending institution meeting the minimum qualifications set forth herein for issuance of a commitment for a mortgage to purchase a low and moderate income unit and who obtains certification as a qualified purchaser of a low and moderate income unit from the Administrative Entity. Once a "qualified purchaser" becomes an owner of a lower income unit in accordance with the provisions of this chapter, any increase or decrease in the gross aggregate household income of such owner shall not affect ownership rights, privileges or obligations of a person or family who occupies the low and moderate income unit subject to the qualifications and conditions stated above and elsewhere herein. Any person who submits false information in support of an application for certification and who subsequently received such certification and either title to a low and moderate income unit as owner or possession of a low and moderate income unit as tenant shall be deemed to have committed a substantial breach of the provisions of this chapter and the Affordable Housing Plan, and any right of ownership of such unit shall be subject to forfeiture pursuant to the provisions of 11C of this chapter. A "qualified purchaser" shall not be permitted to own more than one (1) low and moderate income unit at the same time.

REGIONAL MEDIAN INCOME

The median household income shall mean and refer to the annual median income of the Somerset, Hunterdon and Middlesex housing region as determined by COAH.

RETURN-ON-ASSETS INCOME:

When the household's total net family assets exceed five thousand dollars (\$5,000.), the gross aggregate household income shall include the dollar amount resulting from multiplying the value of the household's total net family assets by ten percent (10%) after excluding the first five thousand dollars (\$5,000.) in assets.

D. Administrative Entity

- The South Plainfield Affordable Housing Agency is the entity responsible for administering the Borough's responsibilities related to ensuring controls on affordability, pricing low and moderate income households, affirmative marketing, and referring income qualified households to low and moderate income housing. The Administrative Entity shall also work with the Borough in completing monitoring forms required by COAH.
- The Borough hereby designates the Borough Clerk as its liaison to the Administrative Entity. The clerk shall be responsible for assisting the Administrative Entity in completing its responsibilities.
- The Administrative entity shall have the following responsibilities:
 - To determine the maximum sale, resale, and rental charges for low or moderate income units and to provide certification of the same to the developer. Said sales and rental prices shall be adjusted annually to reflect recalculations of the regional median income.
 - To prequalify prospective owners and renters based upon income and household size and to issue a certificate as to income eligibility status.
 - To establish selection procedures and criteria for determining qualified purchasers and households.
 - To verify that an Affordable Housing Plan has been recorded and the deeds of individual low and moderate income units reference such Affordable Housing Plan.
 - To develop a formula for use in calculating the maximum resale price of low and moderate-income units.
 - To determine whether the cost or value of the installation of improvements or amenities within or as part of a low or moderate income unit should be included in the calculation of the resale price or rental charge for the unit and to establish guidelines whereby a homeowner can obtain a determination from the Administrative Entity in this regard prior to the time the improvements are made. In no event may the maximum homeowner's/renter's housing cost exceed the maximum homeowner's/renter's housing cost permitted pursuant to COAH's rules for the number of bedrooms within the housing unit.
 - To review and to approve or disapprove the Affordable Housing Plan required of all developers of low and moderate income housing.
 - To review and approve or disapprove the developer's proposed affirmative marketing plan and to require developers to submit proofs of publication in accordance with approved affirmative marketing plans, and to monitor the marketing practices of developers of low and moderate income units to ensure that they comply with the affirmative marketing requirements of this chapter.
 - To report semiannually to the Governing Body and Borough Planning Board on the status of low and moderate income units, including but not limited to such things as the Administrative Entity's actions in connection with any statements of exemption and foreclosures upon any low and moderate income unit.

4. Fees

- Developers of low and moderate income housing shall be responsible for reimbursing the Administrative Entity for its services as provided in N.J.S.A. 52:27D-324 upon initial sale.
- Owners of low and moderate income housing units shall be responsible for reimbursing the Administrative Entity for its services as provided in N.J.S.A. 52:27D-324 upon subsequent sales.
- Owners of rental low and moderate income units shall be responsible for reimbursing the Administrative Entity for its services as provided in N.J.S.A. 52:27D-324 upon each rental and re-rental.
- In addition to the above fees, each and every applicant for low and moderate income housing shall be responsible for any application fee required by the Administrative Entity. The application fee shall be approved by COAH.

E. General Provisions

- Wherever reference is made to low or moderate income housing in the Borough's Zoning Ordinance, the standards, definitions and procedures set forth in this section shall apply.
- Except as otherwise expressly provided herein, no low income unit shall be offered for sale or rental except at prices that are affordable by low income households, and no moderate income unit shall be offered for sale or rental except at prices that are affordable by moderate income households, and, except as otherwise expressly provided herein, no low income unit shall be sold, resold, rented or re-rented except to a household that has been qualified as a low income household by the Administrative Entity. The provisions of this subsection shall apply equally to qualified low and moderate income units or renters in terms of controls on sale, resale, rental, or re-rental of any low and moderate income unit.

- However, nothing contained in this chapter shall restrict or preclude any household which was classified as low or moderate income based upon its gross aggregate household income at the time it purchased or leased a low or moderate income unit from continuing to own or lease said unit after its income exceeds the income ceilings established in this chapter.

F. Occupancy Selection

The Administrative Entity shall designate an application period during which applications to purchase affordable housing units will be accepted. Applications shall be accepted only if submitted on an application form prepared and/or approved by the Administrative Entity. Applications shall be completely filled out and notarized. Knowingly or intentionally making any false statement on a form shall be grounds for disqualifying an applicant even if the applicant is otherwise eligible. In placing households in low and moderate income units, the following verification and certification procedures shall be employed:

- Every household member 18 years of age or over who will live in the affordable unit and receives income shall be required to provide income documentation as applicable and determined by the Administrative Entity. This includes income received by adults on behalf of minor children for their benefit. Household members 18 years of age or over not receiving income must produce documentation of current status.
- Verification may include, but is not limited to, the following:
 - Four consecutive pay stubs including overtime, bonuses, or tips dated within 120 days of the interview date or a letter from an employer stating present annual income figure as projected annually;
 - A copy of regular IRS Form 1040 (Tax computation form) 1040A, or 1040 EZ as applicable and State income tax returns filed for each of the three years prior to the date of interview;
 - A letter of appropriate reporting form verifying benefits such as Social Security, Unemployment, Welfare, Disability or Pension income (monthly or annually);
 - A letter or appropriate reporting form verifying any other sources on income claimed by the applicant such as alimony and child support;
 - Reports that verify income from assets to be submitted by banks or other financial institutions managing trust funds, money market accounts, certificates of deposits, stocks or bonds;
 - Evidence or reports of income from assets such as real estate or businesses that are directly held by any household member;
 - Evidence or reports that verify assets that do not earn regular income such as non-income producing real estate or savings that do not earn interest; and
 - A notarized statement of explanation in such form as to be satisfactory to the Administrative Entity.
- Generally, sources of annual income shall be based on regular income reported to the IRS and which can be utilized for mortgage approval. Household annual gross income shall be calculated by projecting current gross income over a 12-month period.
- Income includes but is not limited to wages, salaries, tips, commissions, alimony, regularly scheduled overtime, pensions, social security, unemployment compensation, AFDC, verified regular child support, disability, net income from business or real estate, and income from assets such as savings, CDs, money market, mutual funds, stocks and bonds and imputed income from non-income producing assets such as equity in real estate.
- Assets not earning a verifiable income shall have an imputed interest income using a current average annual savings interest rate. Assets not earning income include present real estate equity. Applicants owning real estate must produce documentation of a market value appraisal and outstanding mortgage debt. The difference will be treated as the monetary value of the asset and the imputed interest added to income.
- Income from assets that have delayed earnings, such as IRA's or annuity programs shall not be included in current income until such payments are being received. However, these assets must be reported and verified.
- Net rent from real estate is considered income after the monthly mortgage payment including real estate taxes and insurance is deducted. Other expenses are not deductible. In addition, the equity in the rented real estate is considered an asset and will have the imputed interest income on the calculated value of equity added to income.
- Income does not include payments, rebates or credits received under Federal or State low income home energy assistance programs, Food Stamps, payments received for care of foster children, relocation assistance benefits, income of live-in attendants, scholarships, student loans, personal property such as automobiles, lump-sum additions to family assets such as inheritances, one-time lottery winnings, and insurance settlements except for additional income earned from these additions, and causal, sporadic or irregular gifts and bonuses.
- Standard credit information services that provide conventional credit and tenant reports may be utilized when certifying a household with required written permission from the household. An unsatisfactory credit history or credit information that demonstrates a disproportionate debt to income ratio may result in a denial of certification. Court-ordered payments for alimony or child support to another household shall be considered a regular monthly debt whether or not it is being paid regularly.
- Households whose total Gross Annual Income is measured at 50 percent or below 50 percent of the authorized median income guideline shall be certified as low income households and referred to units designated for low income households.
- Households whose total gross annual income is measured above 50 percent but below 80 percent of the authorized median income shall be certified as moderate income households and referred to units designated for moderate income households.
- Generally, households will be referred to units where predetermined total monthly housing costs correspond to the household's calculated ability to pay using 28 percent of gross monthly income as a standard for home ownership and 30 percent of gross monthly income as a standard for rental units.
- At the discretion of the Administrative Entity, households may also be required to produce documentation of household composition for determining the correct unit size and the applicable median income guide.
- Generally, households will be referred to available units using the following standards for occupancy:
 - A maximum of two persons per bedroom;
 - Children of same sex in same bedroom;
 - Unrelated adults or persons of the opposite sex other than husband and wife in separate bedrooms; and
 - Children not in same bedroom with parents.
- Households may be considered for units other than as above, but in no case shall a household be referred to a unit that provides for more than one additional bedroom per household occupancy standard as stated in (b) 14 above.
- A form for certification shall be prepared and signed by the Administrative Entity. Only households receiving certification shall be referred to affordable housing units.
- Certified Households who reject an opportunity for affordable housing may remain on the referral list at their request and may be interviewed again for certification when their name appears on a listing for a subsequent unit.
- Certification shall be valid for no more than 120 days unless a valid sales contract or lease has been executed within that time period. In this event, sales contracts shall be valid until such time as the sales contract or lease is ruled invalid and no occupancy has occurred. Certifications may be renewed in writing at the request of a Certified Household for no more than an additional period of 120 days at the discretion of the Administrative Entity.
- Households who are denied certification may make a written request for a re-determination. Households shall be required to produce additional documentation to support their claim. Households who are denied certification a second time may request a hearing before the Governing Body by forwarding a written request to the Administrative Entity 30 days following the household's receipt of denial notification. If a written request has not been received within the 30 day time period, the ineligible determination will be final. The hearing decision shall be final.

G. Income Eligibility Standards

- The Administrative Entity shall adopt income eligibility ceilings for low and moderate income units for various sized households consistent with those adopted by COAH. No applicant with a household income in excess of these ceilings shall be eligible to purchase or rent the low and moderate income units.
- Upon annual adoption of adopted income standards by COAH, the Administrative Entity shall modify its income eligibility ceilings accordingly.

H. Bedroom Distribution, Pricing of Units, and Barrier Free Townhouses

- South Plainfield Borough's new construction component/growth share will be divided equally between low and moderate income households.
- Except for inclusionary development constructed pursuant to low income

(Continued on next page)

LEGAL NOTICES

(Continued from previous page)

tax credit regulations:

- a. At least half of all unit within inclusionary developments will be affordable to low income households;
- b. At least half of all rental units will be affordable to low income households; and
- c. At least one-half of all units in each bedroom distribution pursuant to pursuant to N.J.A.C. 5:93-7.3 will be affordable to low income households.
3. Inclusionary developments that are not restricted to senior citizens will be structured in conjunction with realistic market demands, so that:
 - a. the combination of efficiency and one bedroom units are no greater than 20 percent of the total low and moderate income units; and
 - b. at least 30 percent of all low and moderate income units are two bedroom units; and
 - c. at least 20 percent of all low and moderate income units are three bedroom units.
4. Low and moderate income units restricted to senior citizens may utilize a modified bedroom distribution. At a minimum, the number of bedrooms will equal the number of senior citizen low and moderate income units within the inclusionary development.
5. In conjunction with realistic market information, the following criteria will be used in determining maximum rents and sales prices:
 - a. Efficiency units will be affordable to one person households.
 - b. One bedroom units will be affordable to a 1.5 person household.
 - c. Two bedroom units will be affordable to a three person household.
 - d. Three bedroom units will be affordable to a 4.5 person household.
- e. Median income by household size will be established by a weighted average of the uncapped Section 8 income limits as adopted on an annual basis by COAH.
- f. The maximum average price of low and moderate income sales units within each inclusionary development will be affordable to households earning 55 percent of median income. The maximum price of a moderate income unit shall be affordable to households earning 70 percent of median income.
- g. Moderate income sales units will be available for at least three different prices and low income units will be available for at least two different prices.
- h. The average rent of rental units shall be affordable to households earning 52 percent of median income. The maximum rent for a moderate income unit shall be affordable to a household earning 60 percent of median income. At least 10 percent of all low and moderate income units shall be affordable to households earning no more than 35 percent of median income.
- i. For both owner occupied and rental units, the low and moderate income units will utilize the same heating source as the market units within an inclusionary development.
- j. Low income units will be reserved for households with a gross household income less than or equal to 50 percent of the median income approved by COAH. Moderate income units will be reserved for households with a gross household income less than 80 percent of the median income approved by COAH.
6. For rental units, developer and/or municipal sponsors may
 - a. Establish one rent for a low income unit and one for a moderate income unit for each bedroom distribution, provided at least 10 percent of all low and moderate income units are affordable to households earning no more than 35 percent of median income.
 - b. Gross rents, including an allowance for utilities, will be established so as not to exceed 30 percent of the gross monthly income of the appropriate household size as per Section E above. The tenant paid utility allowance will be consistent with the utility allowance approved by HUD for use in New Jersey.
7. For sales units:
 - a. the initial price of a low and moderate income unit will be established so that after a down payment of five (5) percent, the monthly principal, interest, homeowner's insurance, property taxes (based on the restricted value of the low and moderate income unit) and condominium or homeowner fee do not exceed 28 percent of the eligible gross monthly income.
 - b. Master Deeds of inclusionary developments will establish condominium or homeowner association fees or special assessments of low and moderate income purchasers at the same rate as market purchasers within the inclusionary development.
8. Barrier Free Townhouses
 - a. Ten percent of all affordable townhouses shall be accessible in accordance with the accessibility requirements set forth at N.J.A.C. 5:23-7.5(b) and (c) in the Barrier Free Subcode, N.J.A.C. 5:23-7. Townhouse units in projects that have received development approvals up to June 20, 2005 shall be exempt from this requirement.

I. Procedures for Raising Rents

Rental charges shall remain in effect for a period of at least one (1) year, except that the landlord may request a modification of these charges by applying to the Administrative Entity for recalculation of the rents based on changes in the index for rentals adopted by COAH.

J. Phasing and Integration

1. Low and moderate income units shall be built pursuant to the following phasing schedule:

Minimum % of Low/Moderate Income Units Completed	% of Market Housing Units Completed
	25
	25+1
	50
	75
	90

2. The integration of low and moderate income units with market units is encouraged.

K. Term of Controls

1. Newly constructed low and moderate income units shall remain affordable to low and moderate income households for at least 30 years. The Administrative Entity shall require a deed restriction and mortgage lien that conforms to those published in the Appendices to N.J.A.C. 5:93-1 et. seq.
2. Affordability Controls on accessory apartments will be for a period of 10 years, except if the apartment is to receive a rental bonus credit pursuant to N.J.A.C. 5:93-5.13. For accessory apartments that will receive a rental bonus, controls on affordability shall extend for 30 years.
3. Alternative living arrangements (including but not limited to assisted living facilities) will be controlled in a manner suitable to COAH that provides assurance that such a facility will house low and moderate income households for at least 10 years. If the low and moderate income units are to receive a rental bonus, pursuant to N.J.A.C. 5:93-5.13, then the controls on affordability shall extend for 30 years.

L. Certificate of Occupancy

1. No certificate of occupancy for a low or moderate income unit shall be issued until the developer shall have submitted and have approved by the Administrative Entity a deed restriction encompassing all the provisions of these regulations.
2. No certificate of occupancy shall be issued for the re-rental of a low or moderate income unit unless the Administrative Entity shall certify that the rental complies with the terms of these regulations.
3. No certificate of re-occupancy shall be issued unless the Administrative entity approves the sale of the unit to a qualified low and moderate income household. The Borough may choose to purchase any affordable housing unit upon resale.
4. No low and moderate income unit may be occupied by an initial tenant or subsequent tenant without a certificate of occupancy.

Affirmative Marketing

1. Program Definition

The Borough's designee (entity) shall develop and implement an affirmative marketing program for affordable housing units. The Affirmative marketing plan is a regional marketing strategy designed to attract buyers and/or renters of all majority and minority groups, regardless of sex, age or number of children, to housing units which are being marketed by the developer of affordable housing. It is a continuous program and covers the period of the deed restriction.

2. Advertising

- a. Advertising for affordable housing units shall begin at least four months prior to expected occupancy. There shall be at least one paid advertisement in *The Home News Tribune* during the first week of the marketing program. In addition, an advertisement will be placed in *The Reporter*. The advertisement shall include:

- i. The location of the units;
- ii. Directions to the housing units;
- iii. A range of prices for the housing units;
- iv. The size, as measured in bedrooms, of the housing units;
- v. The maximum income permitted to qualify for the housing units;
- vi. The location of applications for the housing units; and
- vii. The business hours when interested households may obtain an application for a housing unit.
- b. The Borough's entity shall supplement newspaper advertisements by:
 - i. providing quarterly published materials to the Somerset, Hunterdon and Middlesex County Offices on Aging; Boards of Social Service; and Boards of Realtors;
 - ii. providing quarterly published materials to mailing lists of employers, public housing authorities, community development block programs and non-profit agencies that provide housing services within Somerset, Hunterdon and Middlesex Counties;
 - iii. posting advertisements in local businesses in and surrounding South Plainfield Borough; and
 - iv. mailing information about affordable housing to local religious organizations.
- c. The cost of all newspaper and radio advertising shall be the developer's responsibility and shall be established at preliminary approval.
3. Applications

Applications for affordable housing shall be available at the municipal building, the municipal library, and the developer's sales office. Applications shall be mailed to prospective applicants upon request.
4. Random Selection Procedures

Applications for low and moderate income units shall be reviewed as follows:

 - a. Households that apply for low and moderate income housing shall be screened for preliminary income eligibility by comparing their total income to the low and moderate income limits adopted by COAH. Applicants shall be notified as to their eligibility status.
 - b. Having screened applicants for preliminary income eligibility, the Borough's designee may analyze the income and household sizes of applicants to determine which applicants have the assets and/or income necessary to purchase or rent each available low or moderate income unit.
 - c. The Borough's designee shall interview each applicant and utilize the procedures outlined to verify the applicant's income and household size, determine the applicant's asset availability and review the applicant's credit history. Applicants shall be required to submit income verification for each household member 18 years or older. This process shall be utilized in establishing the final certified applicant group.
 - d. The process described in (1) through (3) above shall begin no sooner than one month after the initial advertisement outline in B(2) above. Households shall proceed through the process described in (1) through (3) based on their ability to provide the information required pursuant to (1) through (3) and pursuant to the occupancy selection procedures included in this Ordinance (Section 6). Households shall be certified for affordable units using the procedures outlined in Section 6. The process described in (1) through (3) shall be continued until all the low and moderate income units are occupied.

5. Procedures Following Initial Occupancy

Following the initial sale or rental of affordable units AHMS shall:

- a. Maintain a current pool of at least five income eligible applicants for each low and moderate income unit.
- b. Contact each income eligible applicant annually to request updated information regarding income and family size.
- c. As units become available, the Borough's designee shall select eligible applicants for the units as described in Section D(2-4) until the units are occupied by low and moderate income households.
6. Responsibilities
 - a. The Borough's designee has the responsibility to income qualify low and moderate income households in low and moderate income units upon initial occupancy; to provide for the initial occupancy of low and moderate income units with income qualified households; to continue to qualify households for re-occupancy of units as they become vacant during the period of affordability controls; to assist with advertising and outreach to low and moderate income households; and to enforce the terms of the deed restriction and mortgage loan. AHMS shall also provide counseling services to low and moderate income applicants on subjects such as budgeting, credit issues, mortgage qualification, rental lease requirements, and landlord tenant law.
 - b. The Borough's Clerk shall be designated to attend an affirmative marketing housing program approved by COAH and serve as the liaison to the Borough's designee.
 - c. All developers shall submit an affirmative marketing plan for marketing low and moderate income units that conforms to this subsection of the Ordinance. The affirmative marketing plan shall be subject to the Borough designee's approval and shall be incorporated as a condition of approval of the development application. The developer shall also be responsible for the following unless such responsibilities are waived by the Borough's designee:
 - i. Submissions of information as to financing terms readily available to low and moderate income households for use by the Borough's designee in computing maximum sales prices.
 - ii. Submission of an affordable housing plan and an affirmative marketing plan to the Borough's designee for approval and submission of proofs of publication to ensure compliance with said plan.
 - iii. The marketing of all low and moderate income units in accordance with the requirements of this chapter.
 - iv. Submissions of quarterly reports to the Borough's designee detailing the number of low and moderate income households who have signed leases or purchase agreements, as well as the number who have taken occupancy of lower income units, including household size, number of bedrooms in the unit, sales price and monthly carrying costs or, in the case of rental units, the monthly rental charges and utilities included.
 - d. The developer's responsibilities hereunder shall expire automatically with respect to for sale low and moderate income units upon the date upon which the last low and moderate income unit within the particular development is sold by the developer. With respect to rental low and moderate income units, the developer's responsibilities shall be assumed by the landlord/management agent and shall be performed by the landlord/ managing agent so long as such unit is a rental low and moderate income unit and subject to the restrictions of this chapter.
 - e. The developer of affordable housing units shall be responsible for returning all applicant and sales records for affordable units to the Borough's designee to aid in reporting to the court or COAH (whichever has jurisdiction) and to aid in the evaluation of the affirmative marketing program.

7. Evaluation of Program

The Administrative Entity shall evaluate the results of affirmative marketing activities and file a report with the court or COAH (whichever has jurisdiction) on forms provided by COAH. The evaluation shall include:

- a. The income and demographic characteristics of each applicant of affordable housing, as well as the occupants of the units.
- b. Conclusions regarding the effectiveness of the affirmative marketing program in reaching low and moderate income households throughout the region.
- c. Proposed adjustments to the affirmative marketing program.
- N. Duration of Controls

Except as otherwise provided in these regulations, all low and moderate income units subject to the provisions of this Article shall be subject to rent controls for a period of thirty (30) years from the date that the first low and moderate income unit is occupied.

All lower income dwelling units shall be covered by covenants to ensure that the units will continue to remain available and affordable to the lower income households for which they were intended for the period specified in this subsection in accordance with the requirements and standards established by COAH.
- O. Severability

If any section, paragraph, subdivision, clause or provision of this chapter shall be adjudged invalid, such adjudication shall apply only to the section, paragraph, subdivision, clause or provision so adjudged and the remainder of the chapter shall remain in full force and effect.

ATTEST:

Vincent Buttiglieri/Municipal Clerk

\$1262.00

April 7, 2006

BOROUGH OF SOUTH PLAINFIELD MIDDLESEX COUNTY, NEW JERSEY

LEGAL NOTICE

ORDINANCE 1727

BE IT RESOLVED BY THE GOVERNING BODY OF THE BOROUGH OF SOUTH PLAINFIELD, MIDDLESEX COUNTY, NEW JERSEY, THAT:

Ord. 1727 entitled: AN ORDINANCE TO FOSTER OPENNESS OF GOVERNMENT AND PROVIDE CITIZENS WITH INFORMATION CONCERNING VARIOUS APPOINTED VOLUNTEER POSITIONS THAT EXIST IN THE BOROUGH OF SOUTH PLAINFIELD be adopted on first reading and advertised in *The Observer* on Friday, April 7, 2006 and that a public hearing be scheduled for Monday, April 17, 2006 at 8:00 p.m. in the Municipal Building, 2480 Plainfield Avenue, South Plainfield, NJ 07080.

ORDINANCE 1727

AN ORDINANCE TO foster the openness of government and provide citizens with information concerning the various appointed volunteer municipal positions which exist within the Borough of South Plainfield.

Section 1.1: Intent and Purpose.

To foster the openness of government and provide citizens with information concerning the various appointed volunteer municipal positions which exist within the Borough of South Plainfield. The Ordinance further provides for a procedure whereby a citizen can indicate his/her desire to serve in a particular appointed position. Finally, the Ordinance provides for a notification process so that those citizens who have indicated a desire to hold a position will be notified when that position is under consideration for appointment and will ultimately be notified as to the action that was taken.

Section 1-1.2: Definitions.

The following terms as used in this Ordinance shall have the meaning set forth below unless the context within which the term is used clearly provides for a different meaning:

- a. **Appointing Authority** – The official or body which by virtue of statutory law or by Ordinance or Resolution is given the authority to appoint a person to hold a particular appointed volunteer municipal position.
- b. **Appointed Volunteer Municipal Position** – Any appointed volunteer position within the Borough government, which is created either by statutory law or by Ordinance or Resolution. Examples of such positions are member of any board, agency, or committee of the Borough.

Section 1-1.3: Registry of Appointed Volunteer Municipal Positions.

The Borough Administrator/Clerk shall cause a register of appointed volunteer municipal positions to be prepared and maintained. Such register shall be made available on the Borough's website and at the Municipal Building and shall set forth at least the following:

- a. Title of each appointed volunteer municipal position.
- b. Brief description of the positions' powers and duties.
- c. Any special credentials or qualifications required to hold the position.
- d. The length of term for the position.
- e. The name of the person currently holding the position, the expiration date of his or her term, and the number of vacant seats on the board or commission.
- f. The dates/times and frequency of any meetings which the holder of the position must attend.

Section 1-1.4: Vacancies

The Borough Administrator/Clerk shall maintain a current updated listing of all existing vacancies for each appointed volunteer municipal position within the municipality. Such list shall be made available free of charge at the Municipal Clerk's Office and shall, in addition, be posted by the Municipal Clerk on a bulletin board maintained for public announcements in the Municipal Building.

Section 1-1.5 Filling Vacancies

Unless essential for the proper functioning and/or carrying on of business of the local agency upon which the vacancy has occurred, a vacancy shall not be filled for a period of 10 days from its posting in order to allow interested persons time to submit applications as provided in Section 1-1.6 below.

Section 1-1.6 Applications.

The Municipal Clerk shall maintain an application form to be completed by any person interested in serving in an appointed volunteer municipal position. Such application shall, at a minimum contain the following information.

- a. Name
- b. Address
- c. Telephone number
- d. E-mail address
- e. Appointed volunteer municipal position sought
- f. Qualifications/experience for position
- g. Signature

Section 1-1.7: Filing Applications

Any person interested in serving in an appointed volunteer municipal position may file an application for such position with the Borough Clerk. Such application(s) may be filed at any time, whether or not the appointed volunteer municipal position sought is vacant. A person may withdraw his or her application at any time.

Section 1-1.8: Maintaining Applications.

The Municipal Clerk shall maintain all filed applications in a file or binder, segregated for each board or commission. Applications shall be considered void after two (2) years unless renewed by the applicant.

Section 1-1.9: Filling Volunteer Municipal Positions

Prior to filling any appointed volunteer municipal position, the appropriate appointing authority shall review each application filed for that position. Each person having submitted an application for an appointed volunteer municipal position under consideration to be filled shall be notified of said vacancy. The appointing authority shall conduct such review, investigation and/or interviews as the appointing authority deems necessary or advisable, in its discretion. After a decision is reached to fill a vacant appointed volunteer municipal position, all those who had submitted an application for that position shall be notified of the appointing decision.

Section 2

All Ordinances and parts of Ordinances inconsistent herewith are hereby repealed.

Section 3. Severability and Effectiveness Clause:

If any sentence, paragraph or section of this Ordinance or the application thereof to any persons or circumstances shall be adjudged by a court of competent jurisdiction to be invalid, or if by legislative action any sentence, paragraph or section of this Ordinance shall lose its force and effect, such judgment or action shall not affect, impair or void the remainder of this Ordinance.

This ordinance shall take effect after final passage and publication in accordance with the law.

ATTEST:

Vincent Buttiglieri/Municipal Clerk

\$189.00

April 7, 2006

BOROUGH OF SOUTH PLAINFIELD MIDDLESEX COUNTY, NEW JERSEY

LEGAL NOTICE

BE IT RESOLVED BY THE GOVERNING BODY OF THE BOROUGH OF SOUTH PLAINFIELD, NEW JERSEY, THAT:

WHEREAS the NJDEP has required the Borough to continue to monitor the Public Works facility due to the previous removal of the underground storage tanks; and

WHEREAS the Borough appointed an environmental engineering firm pursuant to a fair and open process in accordance with N.J.S.A. 19:44A-20.4 et seq; and

WHEREAS the Borough's environmental engineer, PMK Group, has submitted a proposal in the amount of \$40,895.00 to perform said services; and

WHEREAS this contract is being awarded without competitive bidding as "Professional Services" in accordance with N.J.S.A. 40A:11-5(1) (a); and

WHEREAS funds have been certified by the Chief Financial Officer and will be made available in the Capital Improvement Fund account # C-04-55-834-002-901;

NOW THEREFORE BE IT RESOLVED by the Governing Body of the Borough of South Plainfield that authorization is hereby given to enter into a professional services contract with PMK Group in the amount not to exceed \$40,895.00 for the continued monitoring of the Public Works facility due to the previous removal of the underground storage tanks.

ATTEST:

Vincent Buttiglieri/Municipal Clerk

\$48.50

April 7, 2006

Butrico, Petronko and Scrudato Unanimously Endorsed By Dems

The South Plainfield Democratic Committee unanimously endorsed Charlie Butrico for Mayor and Raymond Petronko and Joseph Scrudato for Borough Council at their meeting held at Sherban's Diner last week. In accepting the nomination of their party, all three candidates expressed their thanks and dedicated themselves to a positive, issue oriented and energetic campaign.

Council member Charlie Butrico commented, "I was born and raised in South Plainfield. I love this borough. It is an honor to be endorsed for Mayor. South Plainfield is a great place to live and raise a family. As a member of the Borough Council, I am proud of what the Democratic majority has accomplished. But there are always new challenges to face. I dedicate myself to listening to our residents and working as hard as I can to make South Plainfield even better than it already is. I am thrilled to be running with Councilperson Ray Petronko and Joe Scrudato. They represent the positive energy of the Democratic Party and our borough as a whole. Ray is already recognized

as an outstanding councilperson and Joe will be a tremendous addition to the governing body."

Council member Ray Petronko said, "Charlie Butrico will be a great Mayor. Everyone who has had the pleasure of knowing the Butrico family recognize that they are people who value family, hard work and are recognized for their integrity. South Plainfield is such a special place to live because of people of character such as Charlie Butrico. I am honored to be on the same ticket with him. Joe Scrudato is also a natural for public service. I first met Joe when I was campaigning door to door nine years ago. He immediately impressed me with his community spirit. Joe has gone on to distinguish himself in a host of volunteer activities from serving as the Grand Knight for our Knights of Columbus to being a member of our parade committee to being involved in our sports programs. Joe will be a tremendous asset to our residents when he becomes 'Councilperson Scrudato.'"

The newest member of the Democratic team, Joe Scrudato summed up

his feelings when he said, "I am thrilled to be running for council with our next mayor, Charlie Butrico, and my friend Ray Petronko. It is truly a dream come true. I thank the Democratic Party for putting their trust in me. I promise I won't let you down. Charlie Butrico is recognized throughout South Plainfield for his honesty and dedication. Ray Petronko is the model of a public servant. Ray has literally transformed our parks and recreation program into the best in the state. In addition, he volunteers an enormous amount of time as a firefighter. Charlie Butrico and Ray Petronko are role models for me. I look forward to meeting all of our residents as we conduct our door to door campaign in the upcoming months."

Charlie Butrico summed up the feelings of the candidates. "The team of Butrico, Petronko and Scrudato give you their word that we will always work for the best interest of all of the residents of South Plainfield. We ask for your support on election day this November."

Junior Journalist Corner



Sarah DeLair Named "Junior Journalist"



Sarah DeLair with her teacher, Elizabeth Weiss.

Sarah DeLair, Middle School seventh grader, is this week's winner in the Junior Journalist Program. Her poem, "Angel," has earned her dinner for her family, courtesy of Hometown Heros.

Students should submit their original written works to their teachers, school principal, Hometown Heros located on Hamilton Blvd. or the Observer office. Winners and their fami-

lies will receive a catered dinner from Hometown Heros and will be hon-

Angel By Sarah DeLair

A cold wind and a dark night.
But now and forever I will see this light.
The light of love this angel brought.
And for sure I had but one thought.
God sent me an angel, who I can love,
This angel is surely a gift from above.
Looking to see this smiling face,
I know God has given me eternal grace.
Peace and care are with me now,
And I have no questions.
When or how.
He sent me an angel to guide and guard me,
For this angel he has found my heart's key.
I could not ask for better,
For my life is completed, for now and forever.

BUSINESS/PROFESSIONAL/SERVICES

AIR CONDITIONING/HEATING

SAVE ON PRE-SEASON SYSTEM
\$500 12 MONTHS 0% FINANCING AVAILABLE TO QUALIFIED BUYERS, CALL & SAVE!

LOU FASANO
HEATING & COOLING, Inc.
(908) 755-9141 24 HOUR EMERGENCY SERVICE



ARCHITECTS



Architectural & Engineering
Drafting Services, Inc.

Serving Homeowners & Contractors

NEW HOMES - ADDITIONS & ALTERATIONS

We will meet your schedule

Flexible payment plans available

Please contact us at (732) 324-0503

Serving all your licensing needs

AUTOBODY

**SULLIVAN'S
AUTO BODY**

BodyShop Lic. #02313A

Hours
Mon-Fri
8am-5pm

2210 Hamilton Blvd.
South Plainfield
New Jersey 07080

908-757-5100
Fax: 908-757-3105



CONTRACTORS

**DRESSLER
CONTRACTING**

908-755-4247

KITCHENS, BATHS
& FINE CARPENTRY

FREE ESTIMATES

25 Years Professional Experience

DRIVEWAYS



KleenSeal
DRIVEWAY SEALING
732-321-3699

ELECTRICAL CONTRACTOR

**On Time Electrical
Contractor LLC**

Residential • Industrial • Commercial

No Job Too Small

908-451-3313

On Call 24 hrs.



Fully Insured & Bonded NJ
BILL RITCHEY Lic #8854

FURNITURE REPAIRS



**Precision
Furniture Repairs
On-Site**

Scratches • Gouges • Pet Damage
Water Marks • Burns
Structural Repairs • Broken Joints
Antique Restoration
Kitchen Cabinets Refinished
And MUCH MORE!
(908) 755-8440

HANDYMAN

**LEND A HAND
HANDYMAN**

PAINTING/WALLPAPERING

- Room or rooms that need fresh painting?
- Redecorating with decorative wallcovering?
- MINOR HOME REPAIR & CLEANING**
- Have a leaky faucet or noisy toilet?
- Tub or shower that needs recaulking?
- Windows that need washing?
- Drapery or pictures that need hanging?

CALL BOB 908-812-8496
FREE AND PROMPT ESTIMATES,
REASONABLE RATES, VERY RELIABLE
REFERENCES UPON REQUEST

HEALTH & WELLNESS



Hua Kang Health Center

Massage, Acupressure, Reflexology
Acupuncture • Chinese Herbs • Facial

Licensed Chinese massage therapists and acupuncturists provide experienced Chinese-style services using traditional Chinese medicine methods. Effective in treatment of various pains, symptoms and body needs.

Appointments/walk-ins welcome. Open 7 days/week, 9:30am-9pm
Gift Certificates and Bonus Program available.

We accept credit cards and health insurance.

1763 Lincoln Highway (Rt. 27) Edison • 732-819-0058

126 Plainfield Ave. Edison • 732-572-5599

275 Rt. 18 South, East Brunswick • 732-967-1300

Treat yourself
at our three
locations.
Your satisfaction
guaranteed.

KITCHENS



**David M. Pelech
Wholesale
Kitchens & Bath**

Visit our showroom at
421 Cleveland Ave.
Plainfield

(908) 757-0300

Fax: (908) 754-4293

www.dmpkitchens.com

3% SALES TAX

LANDSCAPING

SHADES OF GREEN



**Landscape
Design &
Installation**

**Complete
Property
Maintenance**

FULLY INSURED

Landscaping & Lawn Maintenance, LLC.

Call Today to Schedule your Landscaping Services 732-548-1168

MULCH/TOP SOIL/STONE

Call **KLK Trucking** for:

Top Soil, Mulch, Sand, Infield
Mix, Decorative & Crushed Stone

Sanding • Salting • Snowplowing

Pick up or Deliv., Mon. thru Sat

908-757-4434
265 Ryan Street
South Plainfield

PARTS & EQUIPMENT

DM PARTS & EQUIPMENT

Parts-Sales-Service-Rentals

WE ARE A FULL SERVICE DEALER!

NOW REPAIRING
Snowblowers, Snowplows, Sanders & Salters

PAUL BILICH, OWNER

250 Mack Place, South Plainfield

908-822-9528

(908-756-7096 fax)

PAVING/MASONRY

Free
Estimates

**MARK L.
DI FRANCESCO**

PAVING • MASONRY

Driveways • Parking Lots • Seal Coating • Steps • Walkways • Patios
Retaining Walls • Pavers • Wallstone • Slate • Bluestone • Excavating
Foundations • Block Work • Cultured Stone • Drainage • Waterproofing

3RD GENERATION IN BUSINESS
908-668-8434

CLASSIFIED AD RATES:

\$15 for 3 lines, \$1 for each additional line.

10% discount for 4 insertions.

Deadline: Monday 5pm

Classifieds

HELP WANTED

AUTOBODY PREP PERSON-BUSY
shop seeks person with sanding & detailing experience. Excellent pay. (908) 757-1933

EASTER EMPLOYMENT
Specialty food store in Watchung seeks sales clerks and food prep people. Flex. hours. Ask for Clyde at HoneyBaked Ham (908) 755-3524.

CERTIFIED HOME HEALTH AIDES
needed to provide loving, compassionate care to hospice patients. FT, PT and per diem avail. Exc. Salary, comp. benefits and terrific work environment. Must have reliable trans. Call (908) 756-9996. Homeside Hospice.

NURSES/LPNs, RNs-IMMEDIATE
opening. F/T, P/T, per diem. Retirees/new nurses welcome. Will train for cases. Mercer, Middlesex & other areas. (732) 246-8905.

PART TIME POSITION AVAIL.
immediately for a creative, outgoing person in a So. Plfd. business. Excel. Front Page & accounting abilities a plus. Call Fred for interview (908) 754-8900.

PART TIME FRONT OFFICE STAFF 12-16 hrs per week for a busy Medical Practice. Computer, typing, filing and telephone, insurance. Fax Resume to: (908) 561-8071.

ROSEDALE TRANSPORT INC.
Drivers Team & Solo needed to run OTR, Solo home every 3 to 5 days. Students welcome. Our drivers enjoy an excellent pay & benefit package. If you have 1 year experience or 6 months w/accredited School Diploma, clean driving record. 1-800-221-3919.

TWO HOT SALONS IN TOWN
looking for 2 stylists and 2 assistants. Call Mike at (908) 715-1694.

HEMOCARE NEEDED

WOMAN WITH MS NEEDS HOUSEHOLD help, varied duties. Days, nights & weekends are needed. (908) 756-9629.

CHILDCARE AVAILABLE

LOVING MOTHER WILL CARE FOR your child/children in her SP home. Call (908) 755-1312.

HOME FURNISHINGS FOR SALE

MATTRESS-NEW PILLOW TOP SETS, new in plastic with mfg. warranty. **Queen \$120 King \$185.** (732) 259-6690.

BEDROOMSET-SLEIGHBED, DRESSER w/mirror, chest & nite stand. New in box, value \$2400, sell \$895, can deliver. (732) 259-6690.

BEDROOMSET-CHERRYWOOD SLEIGH bed, dresser, mirror chest & nite stands. Retail \$3800, sacrifice \$1475, new in box. (732) 259-6690.

DINING ROOM-DOUBLE PEDESTAL table, 6 chairs & hutch/buffet still in box. Value \$3000 sell \$1275, can deliver. (732) 259-6690.

FOR SALE

BOAT FOR SALE-25' WELLCRAFT Sportsman, I/O, completely repowered in 2001. Perfect cond. Sleeps 4. Ready to fish or cruise. Too many extras to list. Asking \$12,500 or B/O. Call (908) 756-5276.

2000 KEYSTONE MONTANA TRAVEL trailer. Less than 1,000 towing miles. Exc. cond. Lots of extras. (908) 754-0544.

APARTMENT FOR RENT

ONE BEDROOM APT.-\$850/MO. includes heat, hot water, parking & disposal. Need referral, security & 1 yr. lease. No pets. (908) 756-5276.

SO. PLFD. 2 BEDROOM APT.-\$1200/mo. No pets. 1 1/2 mo. security. Quiet dead end street. Ask for John. (908) 757-9842.

Deadline to place classified ads is Monday, 5 pm.

HOME/OFFICE CLEANING

TOTAL CLEANING SYSTEMS
Office cleaning, new home construction, houses, condos, townhomes. Free estimate. Anita (732) 877-8170. Kris (732) 522-4841. Faith (732) 939-5383.

HOUSECLEANING

HOUSE CLEANING BY TERI. \$10 per room. References available. Call (908) 222-1441.

PET ADOPTION



Have A Heart! Adopt A Starkitty & Learn About Animal Communication Too!
7 Kittens & 3 Adults have been rescued off the streets. Give them a **SECOND CHANCE!** Great for kids! Ready To Go NOW! (We're local!)

Call Toll Free 888-842-1112 or Visit Us At www.starkittys.com

BUSINESS/PROFESSIONAL

To advertise your business in the Business & Professional Directory call 908-668-0010.

AUTOBODY

R&C AUTO BODY
Family Owned & Operated
Expert Color Matching
24 Hour Towing
All Work Fully Guaranteed
COLLISION SPECIALISTS
908-757-1933
3330 Park Ave., South Plainfield

CARPENTER

DAN SPIRO Carpenter
References Furnished Upon Request
• Additions
• Basements
• Decks
• Doors
• Windows
• Kitchens
• Bathrooms
Free Estimates (732) 910-0942

CHIROPRACTIC

Dr. Patrick M. **Aiello** D.C.
E-Mail: SoPlfdDoc@aol.com
Phone: (908) 581-3610
"We Come To You"

COMPUTERS

Concerned About Computer Virus Protection? Home Security?
For advice and installation, call Stan Wilkinson at **ST Computers**
908-769-0709
• New Computers/Upgrades
• Hardware/Software Installations
• In Home Service
• Some Used Computers Available
Cell: 732-423-3504
Email: stcomputers@comcast.net

CONTRACTORS

BUILDER & GENERAL CONTRACTOR
NJ DCA LIC #019771
Since 1981
Lordina Builders
908-753-3850
ADDITIONS • KITCHENS
BATHROOMS
Office Renovations
FREE ESTIMATES

GARAGE DOORS

Garage Doors with Style
Risoli Door Corporation
South Plainfield, NJ 07080 800-801-4525
WWW.RISOLIDOOR.COM

GUITAR LESSONS

GUITAR LESSONS In South Plainfield
• Acoustic
• Electric
• Fingerpicking
Beginner Specialist
Open Tunings
6 & 12 String Guitars
755-6882

GUITAR LESSONS

GUITAR LESSONS
Beginner to Advanced
908-822-9702
SOUTH PLAINFIELD
All Styles
Kenny Campbell
www.kennymusician.com

JUNK REMOVAL

JUNK REMOVAL WE TAKE ANYTHING!
Any Item Removed!
A.J.'S JUNK REMOVAL
(908) 229-4831

LANDSCAPING

J&J Landscaping SOUTH PLAINFIELD
• Lawn Maintenance
• Yard Clean Ups
• Mulching
• Spring Clean Ups
908-757-5098
Free Estimates
Senior Citizen Discounts

Silver Creek Landscaping SOUTH PLAINFIELD
COMPLETE LAWN MAINTENANCE
• LANDSCAPE PLANTINGS
• SHRUB & TREE PRUNING
• HYDRO SEEDING & SOD
• MULCH / STONE / TOPSOIL
• RETAINING WALLS
• BRICK PAVERS - PATIOS & WALKS
• RESIDENTIAL & COMMERCIAL
- FREE ESTIMATES -
908-756-7272

GRADUATE Free Estimates
LAWN CARE
LAWN MAINTENANCE LANDSCAPE DESIGN
Mulch Beds • Pavers • Top Soil
Stone • Aeration • Thatching
Commercial - Residential
(732) 548-0752

Lalaria Landscaping LANDSCAPING
Leslie Chambers
Telephone: (908) 917-1668
Fax: (908) 757-5775
• Fully Insured •
• Affordable and Reliable! •

ROSS' LAWN CARE LAWN CARE
Mulch • Stone • Sod • Edging
Trimming • Topsoil
LAWN CUTTING
Free Estimates
908-755-1438 SOUTH PLAINFIELD

PAINTING

PREMIER PAINTING SERVICES
Interior/Exterior
Staining • Powerwashing
FREE ESTIMATES
Call 732-690-9046

PLUMBER

Professional Plumbing & Heating Inc.
(908) 561-1941
South Plainfield, NJ
FRANK MCCARTHY
License #8741

POOL SALES/SERVICE

(908) 756-3120
Schedule your pool opening now!
McCarthy Contractors
Pools-Ponds-Water Features
SALES AND SERVICE
Blaise McCarthy
Member of NSPA
20 Years Experience
Fully Licensed & Insured - SOUTH PLAINFIELD

ROOFING

J.T. PENYAK ROOFING CO.
COMMERCIAL INDUSTRIAL
RESIDENTIAL
908-753-4222
FAX 908-753-4763
124 CAMDEN AVE.
SO. PLAINFIELD, NJ 07080

TRUCK SALES

CAMBRIA, GMC TRUCK CENTER
1-800-899-5226 X-110
NEW 2006 GMC W4500 CREW CAB
ASK FOR TONY-FINANCING AVAILABLE

HOLY WEEK/EASTER SERVICES

Association of South Plainfield Churches Holy Week Programs

• **Palm Sunday Activities**—Call your own church for information.

• Maundy Thursday

9 a.m. Morning Prayer, Sacred Heart Church
7 p.m. Interpreted Seder Service, First Baptist Church
7:30 p.m. Foot Washing and Holy Communion
St. Steven's Lutheran Church
Mass of the Lord's Supper, Sacred Heart Church
Liturgy of Lord's passion and Eucharist, Wesley Methodist
11:30 p.m. Closing Night Prayer, Sacred Heart Church

• Good Friday

9 a.m. Morning Prayer, Sacred Heart Church
12-2 p.m. Ecumenical Community Service, St. Steven's Lutheran Church
3 p.m. Liturgy of the Lord's Passion and Death, Sacred Heart Church
7:30 p.m. Voices Round the Cross, Sacred Heart Church
The Message of the Cross, Wesley Methodist
The Service of Darkness, St. Steven's Lutheran Church

• Holy Saturday

9 a.m. Morning Prayer, Sacred Heart
12 p.m. Blessing of the Easter Food, Sacred Heart
5 p.m. The Solemn Easter Vigil, Sacred Heart
7:30 p.m. Easter Vigil, St. Steven's Lutheran Church

EASTER

6:30 a.m. Ecumenical (community) Service at Spring Lake Park
(Rainsite: Wesley Methodist)

Rescue House of Prayer Easter Weekend schedule — 1921 Roosevelt Ave.

Friday April 14

12-2 p.m. Association of South Plainfield Churches
Good Friday Service at Stephen's Lutheran Church

8 p.m. Good Friday Service

Sunday April 16

6:30 a.m. Association of South Plainfield Churches
Easter Sunrise Service at Spring Lake Park
11 a.m. Easter Worship Service
6 p.m. Sunday School Easter Program

Willow Grove Church Holy Week, Easter Services

Willow Grove Presbyterian Church of Scotch Plains invites everyone who would like to participate in the reverent commemoration of the last week of Christ's life, the passion and crucifixion, and then the joyful celebration of His resurrection from the dead on Easter morning.

Holy Week is a time to reflect on the last week of Jesus' life and the great sacrifice our Lord made for us. It is also a time to rejoice in His resurrection. During Holy Week we will have several worship services to observe this important celebration. All services will take place in our sanctuary. Children are welcome to participate in the services.

Palm Sunday—Sunday, April 9, 10:30 a.m. A tribute to Christ's triumphant arrival in Jerusalem among cheering crowds. Service will include children's procession of palms and special music including anthem Sing Hosanna. We welcome our new pastor, Rev. Cynthia Cochran-Carney, who will be preaching a sermon entitled "Walking the Walk."

Maundy Thursday—Tenebrae Service—Thursday, April 13, at 7:30 p.m. This service is in remembrance of the day Jesus shared the Last Supper with His disciples. It is a service of darkness, depicting the events that led to His crucifixion. Communion will be celebrated and all are welcome to participate. Scripture readings, special music, including "Jesus is Crucified," and prayers around the cross will be part of the service. As the solemn service progresses, the lighted candles will gradually be extinguished, and finally the congregation will exit in silence and in darkness.

Easter Sunday—Sunday morning, April 16 at 10:30 a.m. A glorious celebration of Christ's resurrection,

this service will include jubilant music and joyful worship. The children's bell choir will play and the choir will sing special music, including "On the Third Day." All children will receive an Easter joy bag.

A special offering for One Great Hour of Sharing will be taken which provides funding for disaster response, refugee assistance and resettlement and community development. Presbyterian Disaster Assistance is participating in the Darfur response as a member of an international alliance of Catholic, Protestant and Orthodox aid organizations from the United States, Europe, and Sudan. The offering also helps with the rebuilding efforts in the United States Gulf Coast. The sermon "Are We Living in the Past, the Present or the Future?" will be given by our pastor, the Rev. Cynthia Cochran-Carney.

Something for Everyone—A Walk Through The Bible is a weekly study class for children ages nine and up Sundays from 9-10 a.m. in the second floor Sunday School classroom.

Adult Bible Study Class concentrates this year on "The Resurrection of Jesus—What is the Evidence & What Difference Does It Make?" It takes place Sundays from 9-10 a.m. in the church lounge.

Join us for Fellowship Time every Sunday morning (10-10:25 a.m.) in Ryno Hall.

The Children's Ark Nursery is staffed every Sunday morning from 10:30 a.m. for babies and toddlers under the age of four.

"Discovery Kingdom" Sunday School takes place during worship following the Kids' Chat, when children ages four to eight leave the sanctuary with their teachers to study the month's theme, expressed each week with a different activity, including video, computers, games and art. Children will enjoy special creative projects planned for Easter Sunday School.

For more information about Willow Grove, please phone the church office, Monday through Friday, at (908) 232-5678, e-mail us at wilgrv@netzero.com or check our website at www.scotchplains.com/wgpc. Come to Willow Grove Presbyterian Church, 1961 Raritan Rd., across the street from the Scotch Plains Southside Firehouse and near the corner of South Martine Avenue. All the facilities are handicap-accessible. Large-print bulletins and hymnbooks are available, as are headsets for the hearing-impaired.

(*Suspended Easter Sunday)

BOE Candidates

(Continued from page 1)

Both candidates made it clear they support the budget. Gregorio said her daughter, who is on the softball team, benefited from the coaching and endorsed the Middle School sports program for providing an incentive for students who might work harder in school if it meant they had to keep their grades up to be on a team.

Giannakis noted that the Middle School sports program was only five years old.

"If it means losing teachers, then sports have to go," Giannakis said.

To the question posed—had a survey had been taken to determine if teachers in other towns contribute toward their benefits—Gregorio answered that she had heard that there are other counties where teachers pay for benefits. Giannakis said he didn't know, but he would look into it. Roosevelt PTO President Stephanie Walsh read the questions and at the end of the program thanked the candidates for making the sacrifices to run for the Board of Education.

BUSINESS/PROFESSIONAL/SERVICES REAL ESTATE

ERA Suburb Realty Agency

LORI TANGORRA
ABR, REALTOR®
Sales Associate

Office:
(908) 322-4434 x164
Fax: (908) 322-2352
Cell: (732) 742-5692
E-Mail: Lori.Tangorra@ERA.com



1773 E. 2nd Street
Scotch Plains, NJ 07076

Century 21 Moretti Realty



Joseph Diegman
REALTOR-ASSOCIATE & LICENSED SA. PLAINFIELD, NEW JERSEY

"Nobody knows
South Plainfield
like Joe Diegman."

Business:
(908) 755-5300 x315
Evening:
(908) 756-9123
Email: DiegmanJ@morettiirealty.com

225 Maple Ave., South Plainfield, NJ 07080

The Team
That Works
We Get
Results!

Century 21 Moretti Realty



Andrea & Jesse Lacerda
REALTOR-ASSOCIATE & LICENSED SA. PLAINFIELD, NEW JERSEY

Give Us a Call &
We'll Prove It!
(908) 755-5300
Ext. 302
Cell (908) 578-1166
TOP AGENT FOR
OVER 10 YEARS

Email: LacerdaA@MorettiRealty.com
www.LacerdaTeam.com

225 Maple Ave., South Plainfield, NJ 07080

Our Lady Of Czestochowa R.C. Church

807 Hamilton Blvd., South Plainfield

HOLY WEEK & EASTER SCHEDULE

April 8-Saturday
5:30pm, Palm Sunday Vigil Mass
April 9-Palm Sunday
8am & 11am Mass
April 13-Holy Thursday
7:30pm, Mass of the Lord's Supper
April 14-Good Friday
3 pm, Passion of our Lord
7:30pm, Stations of the Cross

April 15-Holy Saturday, 8pm
Easter Vigil Mass
April 16-Easter Sunday,
7:30am, Procession & Mass of
the Resurrection
11am, Mass of the Resurrection

** Blessing of Easter baskets will take
place on Holy Saturday, April 15, at
11am and 12 Noon at the Parish Hall.

(908)
756-1333



Prudential New Jersey Properties



John "Jack" Pedersen
REALTOR®-ASSOCIATE
3 Amboy Ave., Metuchen, NJ 08840
Bus (732) 494-7677
Cell 877-640-0060
Email: JackPedersen@PruNewJersey.com

An Independently Owned & Operated Member of The Prudential Real Estate Affiliates, Inc.

Century 21 Moretti Realty



Business
(908) 755-5300
Ext. 312
Evenings
(908) 756-5335
Email: platej@morettiirealty.com

JOANN PLATE
REALTOR-ASSOCIATE

225 Maple Ave., South Plainfield, NJ 07080

Century 21 Moretti Realty

Put your trust in a Realtor
who can get the most
money through
knowledge & experience!



Evelyn Sherwood
Broker-Associate

Over 28 years
experience in
South Plainfield
& vicinity
Office: (908) 755-5051 Ext. 313
(908) 753-1346 Evenings
Email: sherwood@morettiirealty.com

225 Maple Ave., South Plainfield



Prudential

Rose REALTORS®
Rose Marie Pelton
REALTOR-ASSOCIATE

South Plainfield Resident
For Over 39 Years
908-753-4450 X302
Toll Free 800-370-2424
Fax 908-753-0136
RosePelton@att.net

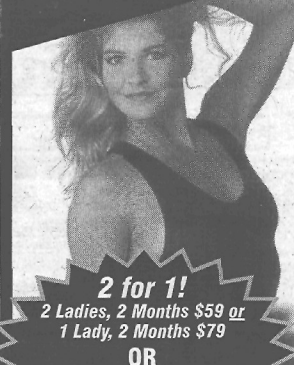


Rose Marie Pelton

Prudential Rose REALTORS®
659 Mountain Boulevard, Watchung, NJ 07069

If you would like
information on
advertising your business
in the Business &
Professional Directory,
please call
908-668-0010.

Spring Flowers Blossom, So Come Blossom With Us!!



Take the first step towards
a happier, healthier &
slimmer you with a
FREE 14 Day PASS!
New Members Only

Call today!
908.756.9911

LADIES



2 for 1!
2 Ladies, 2 Months \$59 or
1 Lady, 2 Months \$79

OR
50% Off Registration Fee
With Min. 1Yr. Contract*
*New members only. Cannot
combine w/other offers.

South Plainfield
902 Oak Tree Road Suite 2
Across from Super A&P