

# South Plainfield Observer

JUN 03 2004

VOL. 8, NO. 41

50 CENTS

MAY 28, 2004

## Friends and Family Gather to Honor Sue Mischka, Agnes and Gene Ficorrili



Family and friends of Agnes and Gene Ficorrili attend the flag pole dedication at the senior center on Maple Ave.

Last Sunday hundreds of seniors joined the mayor, the entire council, Recreation Director Mike English, members of the Recreation Commission and Senior Coordinator Joann Graf in honoring both Sue Mischka and Agnes and Gene Ficorrili for their years of dedication and service to the seniors of South Plainfield.

It was evident from everyone who spoke at the ceremonies how much

respect and love everyone felt for them. Most were close to tears when remembering how the Ficorrilis' and Mischka helped seniors throughout the years.

Sue Mischka was honored by naming the all purpose room after her. Plaques will hang above each entrance door and one will be hung inside the room, along with a picture of her with the meals on wheels van.

Recreation Assistant Pete Rackwel started his speech by saying, "Hello friends." He said that was the way Sue felt about all of the seniors, they were all her friends. He concluded by saying, "To Sue you were more than just people, you were a part of her family."

Jim Lenox, who hired Mischka more than 20 years ago, said Sue was instrumental in instituting many programs, always looking out for the well being of each senior.

In honor of Agnes and Gene Ficorrili, a flagpole with a stone memorial was dedicated to their memory. Members of the Ficorrili family were on hand to raise the flag for the first time. After lighting is installed, the flag will be flying day and night in front of the Senior Center, but for now it will only be flown during daylight hours.

The Ficorrilis were active members at the senior center, especially Agnes, who never missed bingo, helped run trips to Atlantic City and was active in planning the new center. When she died, she asked that contributions be made to the Senior Center. Joann Graf felt that it was fitting to give something back to her and her husband and dedicating the flag pole in their honor was perfect.

Graf, with a lot of help from the Spisso sisters, Angelo Paradiso and Sandy Connelly, spent the entire week before the ceremonies working on beautifying front of the center. The results were very evident on Sunday.

## NJ Vets Visit WWII Veterans Memorial

On Wednesday, May 19, more than 500 veterans from Middlesex, Union and Somerset Counties participated on a trip to the new National World War II Veterans Memorial in Washington, D.C.

The trip was funded through donations from individuals and corporations. Assemblyman Sam Thompson of Somerset County chaired the project.

While the group was touring the memorial, Congressman Mike Ferguson took time out of his schedule to speak to the more than 500 New Jersey World War II veterans. He praised the veterans for their service and sacrifice.

"Although the war in which you fought took place more than half a century ago, your courage, your sacrifice and your patriotism reaches through the decades and inspires us today," Ferguson told the veterans. "From protecting our freedoms and defeating evil to rebuilding our economy here at home, America and the world are forever changed because of what you did. I know it's been said before, but it can never be

### The Badge of Glory

If all the medals upon our chests  
From battles and wars we knew  
The one admired as the very best  
Is the one of infantry blue.

It's only a rifle upon a wreath  
So why should it mean so much?  
It is what it took to earn it  
That gives it that Touch.

To earn this special accolade  
You faced the enemy's fire  
Whether you survived or not  
God dialed that one desire.

For those of us who served the cause  
And brought this nation glory  
It's the Combat Infantryman's Badge  
That really tells the story.

## Memorial Day Services Announced

The annual Memorial Day services, co-sponsored by the American Legion and the VFW #6732, will be held on Monday, May 31.

The opening ceremonies will begin at the VFW, located on Front St., at 9 a.m. followed by visits to each borough cemetery, where wreaths will be laid and Taps played. Cemeteries to be visited are the Jewish and Samptown Cemeteries, both located on New Market Ave. and Holy Redeemer Cemetery on Clinton Ave. A wreath will also be placed at the memorial in Veterans Park.

Closing ceremonies will be held at the American Legion Post 243, located on Oak Tree Ave., followed by a free lunch. All are welcome to attend any or all of the services.

This is a great opportunity for parents and children to honor our Veterans, who have assured us the freedom we take for granted.

## Three Borough School Principals Reassigned

At last week's Board of Education meeting, Superintendent of Schools Dr. Robert Rosado announced the reassignments of three principals. The move seemed to come as a surprise to most teachers and parents.

Middle School Principal Fred Oberkehr will become principal of Kennedy School. Oberkehr has been principal at the Middle School since October of 2000, before then he was the Math and Computer Technology Coordinator since 1994.

Kennedy School Principal Al Czech will become principal at the Middle School. He was principal at Kennedy for 10 years; prior to that he had been Director of Athletics, starting in 1985.

John E. Riley Principal William

Beagle becomes Director of Guidance (K-12), a job he formerly held in 1987. He replaces Cynthia Powell, who recently resigned. Beagle has been principal for three years; before then he was Assistant Principal at the Middle School.

Several parents expressed surprise and regret on losing their principals. Teachers also were surprised and saddened to be losing their principal and leader.

Rosado said no one has been named to replace Beagle, but a search will begin shortly for a new principal at Riley School.

In other action, the BOE hired a new health insurance broker, Charles W. Cammack Associates, Inc. for the 2004/2005 school year.



World War II Veteran William Tuthill (left), with NJ Congressman Mike Ferguson, and other veterans from New Jersey at the National World War II Veterans Memorial in Washington, D.C.

said enough—thank you, on behalf of a grateful nation."

A videotape produced by Thompson was played on the bus. It explained how he had hoped for at least 10 bus loads of veterans, but was delighted when that they ended up with 12—and almost 600 veterans.

While walking around the memorial, a school group stopped to talk with the veterans, asking questions

about their war experiences. One of the student's mothers asked, "How old were you when you served?" She seemed surprised when we replied, "18, 19 and 20."

She then said, "May I ask, how old are you now?" Again she seemed a bit surprised at the answers: "81, 82, 83."

The veterans were thrilled to be

(Continued on page 12)



# Mark your calendars

Log on to  
southplainfieldnj.com  
for the latest  
meeting agenda

## council meetings

Meets twice a month on the first and third Monday.  
Borough Hall Council Chambers • Questions? 908-226-7605

	Agenda Meeting	Public Meeting
Monday, June 7	7:00 p.m.	8:00 p.m.
Monday, June 21	7:00 p.m.	8:00 p.m.
Monday, July 12	7:00 p.m.	8:00 p.m.

All meetings of the Governing Body are held in accordance with New Jersey Open Public Meetings Act (NJSA 10:4-6 et seq) in the Council Chambers at 2480 Plainfield Avenue.

## planning board

Meets second and fourth Tuesday of the month  
Borough Hall Council Chambers, 7 p.m. • Questions? 908-226-7641  
June 8 and 22, July 6 and 20, Aug. 10 and 24,  
Sept. 21, Oct. 12 and 26, Nov. 16 and 30 and Dec. 14 and 28.

## zoning board of adjustment

Meets second and fourth Thursday of the month  
Borough Hall Council Chambers, 8 p.m. • Questions? 908-226-7641  
June 10 and 24, July 8 & 22,  
Aug. 12 and 26, Sept. 9 and 23, Oct. 14 and 28, Nov. 4 and 18 and Dec. 2 and 16.

## board of education meetings

Roosevelt Administration Gymnasium on Jackson Ave. unless otherwise noted  
Committee of the Whole meets Tuesdays at 7 p.m.—June 8, July 13, Aug. 10, Sept. 14, Oct. 12,  
Nov. 9, Dec. 14, Jan. 11, 2005, Feb. 8, March 8 and April 5.  
Regular Board Meeting held Tuesdays at 8 p.m.—June 15, July 20, Aug. 17, Sept. 21, (Monday) Oct. 18, Nov. 16, Dec. 21, Jan. 18 2005, Feb. 15, March 15 and April 12.

## taxpayers advisory group

The Taxpayers Advisory Group (TAG) meets the fourth Tuesday of every month at Borough Hall, 2480 Plainfield Ave. at 7 p.m. Questions? 908-769-0786.

## site plan sub-committee

Meets once a month on the third Tuesday of the month, 8 p.m.  
June 15, July 20, Aug. 17, Sept. 21, Oct. 19, Nov. 16 and Dec. 21.

## recreation commission

Meets once a month on the first Tuesday of the month, except July and August  
PAL Building, Maple Ave. 7 p.m. • Questions? 908-226-7716  
June 1, Aug. 3, Sept. 7, Oct. 5, Nov. 2 and Dec. 7.

## environmental commission

Meets once a month (second Wednesday)  
Borough Hall Conference Room, 8 p.m. • Questions? 908-226-7621  
June 9, July 14, August 11, September 8, October 13, November 10, December 8  
January 12, 2005.

## business advisory group

Meets once a month (first Wednesday)  
Borough Hall Council Chambers, 5 p.m. • Questions? 908-757-8100

## traffic safety advisory commission

Meets once a month (fourth Wednesday) at 7 p.m.  
in the Conference Room, Borough Hall

## board of education curriculum/technology meetings

Meets once a month (last Tuesday) at 8 p.m. in the 2nd floor conference room at Roosevelt Administration Building on Jackson Ave.  
May 28, June 22, (No meeting July). August 24, September 28, October 26, November 23,  
December 28. January 25, 2005, February 22 and March 22.

## South Plainfield Observer

The South Plainfield Observer is published every Friday

G&G Graphics, Inc.  
1110 Hamilton Blvd. Suite 1B  
South Plainfield, NJ 07080  
(908) 668-0010 • FAX (908) 668-8819

NANCY GRENNIER  
Publisher/Editor

Web page:  
www.spobserver.com  
For subscriptions, advertising or  
information, call (908) 668-0010.

The publisher is not responsible for typographical errors.

WAYNE GRENNIER  
Associate Publisher  
SUSAN KANEPS  
Art Director/Associate Editor  
PATRICIA ABBOTT  
Staff Writer/Photographer

CAROL GRENNIER  
Editorial Assistant  
TONI MARIE CICCIA  
Production Assistant

CHRISANN ZUSHMA  
Web Page Design

ROXANNE CORTESE  
JANE DORNICK  
WILLIAM TUTHILL  
Advertising Sales

The South Plainfield Observer (U.S.P.S. 018253) is published weekly, except Thanksgiving week, by G&G Graphics Inc. 1110 Hamilton Blvd. Suite 1B, South Plainfield, NJ 07080-2004. Second class postage paid at South Plainfield, New Jersey 07080-9998. POSTMASTER: Forward change of address orders to G&G Graphics Inc. 1110 Hamilton Blvd. Suite 1B, South Plainfield, NJ 07080-2004. Subscription rates \$25 per year in South Plainfield; \$30 per year out of town. To subscribe: 908-668-0010.

## SUBMIT YOUR ARTICLES

We look forward to hearing from all of you and encourage you to send in your stories and photos. The South Plainfield Observer is your paper. Please let us know what you would like to see in it.

To get an article published in the South Plainfield Observer:

1. Type (double spaced) the article you wish published.
2. Mail, fax or drop it at: South Plainfield Observer, Editorial Department, 1110 Hamilton Blvd., Suite 1B, South Plainfield, NJ 07080 or drop it in the box at Mohn's Flowers on Plainfield Ave. or at (908) 668-8819 or e-mail us at ggann@aol.com or ngrennie@ix.netcom.com. Include your name, address, telephone number. You can subscribe or contact us at: spobserver.com.

## LETTERS TO THE EDITOR

Letters may be submitted by mail to South Plainfield Observer, Editorial Dept., 1110 Hamilton Blvd. Suite 1B, South Plainfield, NJ 07080, by email: ggann@aol.com or fax 908-668-8819. Letters should not exceed 400 words. We reserve the right to edit for clarity or length. It is the editor's discretion to limit the number of letters submitted by one individual on the same subject. The opinions expressed in "Letters" do not necessarily reflect the opinion of the Observer. All letters must be submitted with name and phone number, for verification.

# IN YOUR OPINION

To the staff at Twin City Pharmacy:

I want to thank each and everyone working at Twin City Pharmacy for helping me when I recently learned I needed to go on insulin.

They were very patient with me, showing me how to take the medication, to use the monitor, change needles, give myself the shots and check my blood sugar level. It was a very busy day and everyone catered to me like I was the only one in the pharmacy, and they still continue to help me everyday.

Thank you so much for caring.  
**FRAN STROBECK**

Dear Editor,

Well, it's happened again. Last week the Mayor and Council sold more land to a developer, one who also happens to be a big-money Democratic donor. Once more the governing body has ignored the voices of residents who are unhappy with the overdevelopment of our town and once more they've given a favor to a political contributor instead.

The parcels weren't huge, but that's not the point. One of the few ways we can control development is by holding borough-owned land rather than selling it. Purchasing "open space" is meaningless if at the same time we're selling other land to developers.

What's more, selling off our assets is bad fiscal policy. We shouldn't be propping up the budget by resorting to these types of one-time revenue enhancers.

Even more troubling is that the Democrats promised they wouldn't do these things. They criticized their predecessors for selling borough-owned land, and they promised they wouldn't do it if elected. In the meantime the town has experienced a tidal wave of building, making land sales even less desirable.

The actions of the mayor and council are disappointing, but apparently memories are short when one party rules.

**MARGE REEDY, CANDIDATE FOR BOROUGH COUNCIL**

To the Editor,

After the insane school budget proposed by the current Board of Education was voted down in April 2004, there was a long and rambling letter in the South Plainfield Observer by one of the budget authors. As usual in this type of peroration, the letter did not contain any numbers (i.e. dollar amounts) so the citizens of South Plainfield could judge if it was—in the author's words—"honest (no fat budget), lean by design, out of the board's consideration for the tax payers of our community".

Instead of trying to convince the

taxpayers that the proposed budget was reasonable by showing where 44 million dollars of our money was going, the letter's author flogged those who voted 'no', which, according to him, was done to "punish current Board members out of political differences".

The South Plainfield Board of Education member also writes "I work hard for a living, and I believe they [South Plainfield Education Association members] understand that, considering the relative wealth of our community, we cannot afford what perhaps the East Brunswicks, Metuchens, and other, more affluent districts, can. However, at the end of the day, we also need to remain competitive in order to continue to attract high quality candidates to teach in our schools".

Mr. Board member, for the 2002-2003 school year (latest available data), Metuchen's average combined SAT score was 1062, with an average teacher's salary of \$59,015, after 12 years' work. East Brunswick's average SAT was 1142, with an average teacher making \$64,087 after 13 years. South Plainfield's average SAT score was a shameful 978, with an average teacher's salary we can all be proud of: \$65,650 after only 11 years—the highest in Middlesex County, easily topping both East Brunswick and Metuchen.

It looks as if the board member, a person in charge of your children's education) doesn't know what he's writing about.

Just as a reminder, the average New Jersey SAT score was 1018, with a teacher's salary of \$50,002, after 11 years.

But take heart, citizens of South Plainfield, we are in good company, paying for the past 20 years "competitive [salaries] in order to attract high quality candidates to teach in our schools." In Newark, the average SAT score is 693 (we beat them), while the average teacher's salary is \$70,210 (BOE, take notice; we have to improve here immediately, otherwise all teaching talent from our schools will flee to Newark).

If the board was really to represent us (that is, the children and taxpayers of this town) and not a Teacher's Union as it does now, it would con-

## Submit Letters to the Editor:

Letters may be submitted to the Observer, 1110 Hamilton Blvd. Suite 1B, South Plainfield, NJ 07080, by email: ggann@aol.com, or faxed to 908-668-8819. Deadline is Monday, 5 p.m. Letters must be accompanied by a name and telephone number for verification. Limit letters to no more than 400 words. We reserve the right to edit for clarity or length. We reserve the right to limit the number of letters submitted by one individual on the same subject.

centrate its effort to achieve competitive results.

The only positive side of the letter to which I am responding to here is seeing American democracy in action. Anybody can write a letter and the newspaper will publish it, regardless of its veracity.

**BOGDAN FRYSZCZYN**

*PS. If it was not for the letters to the Observer, the citizens of South Plainfield would not be aware of the chicanery behind the proposed budget.*

*The budget's cost increase was solely due to the teachers' salary increase of 4.9% and the increased cost of their benefits. Because of the association with that tax increase the budget was defeated. There was zero amount for capital funding and no provision in the budget for the increased transportation cost. Apparently, in the town the Board lives, the price of gas does not go up.*

To the Editor,

At a meeting held for senior citizens on May 19, the Senior Men's Forum advised the seniors to be aware that the town's Planning Board met recently to hear preliminary plans on the construction of a second Senior Housing project, a 484 unit, four-story building, at the former Tingley Rubber plant site. The Borough Council must first rezone the Tingley Robber property. The proposal is to build "age-restricted" housing on a 27-acre site now zoned industrial location, located not far from the entrance to Rt. 287. Zoning Officer John Pabst was the only dissenting vote. As reported in the Chronicle, (the only paper to run

(Continued on page 12)

Phone: (908) 755-2289  
Cell: (908) 581-3610  
E-Mail: SoPlfdDoc@aol.com

**Aiello**  
Chiropractic Center, P.C.  
Dr. Patrick M. Aiello, D.C.

**OPEN M-S 8-8,  
Sun 8-7**

**Lowest Prices, Highest Quality, Large Assortment**

**Under New Management! GRAND REOPENING**

**Fresh!**

**Fruit • Fish • Dairy • Deli • Vegetables • Salad Bar • Sushi • Baked Goods • Cut Flowers**

**JOIN OUR FREE VIP CLUB!**

5% of total purchase amount (\$20 min.) goes towards a credit for future rewards

**FREE**

Extra Large Eggs or 5lbs. baking potatoes

Min. purchase \$10-PRODUCE ONLY Expires 6/11/04

**\$3 Off**

Purchases Over \$30

Produce Only Expires 6/11/04

**GREAT FARMERS MARKET**

1620 Park Avenue (formerly Acme) South Plainfield

908-769-4144



## BOROUGH NEWS

### Council Notes

■ An ordinance was approved authorizing a lease agreement with the Middlesex County Improvement Authority for a truck and ambulance.

■ An ordinance was passed selling two parcels of land on Harvard Ave. to Harry Popik for \$75,000.

■ A bond ordinance was introduced to purchase real estate property at the future site of the new library in the amount of \$325,000.

■ An ordinance was introduced amending the borough's personnel policy to include the "Donated Sick Leave Policy." This will allow employees to donate their sick days to fellow employees who may need them when they are seriously ill.

■ The seasonal workforce at the South Plainfield Community Pool was authorized to be hired from May 17 to Sept. 7.

■ A block party was approved for June 5 (rain date, June 6) on Wells Dr. from Meadow Terrace to the dead end.

■ An off-premise 50/50 raffle license was approved for the Sons of Union Veterans of the Civil War George A. Cluster Camp #17 for Oct. 31.

■ The mayor and municipal clerk were authorized to execute the Inter-local agreement with Middlesex County for the improvements to Stelton Rd. within the borough.

■ The Borough's Recycling Coordinator was authorized to submit the matching grant application for the 2004/2005 Recycling Enhancement Grant. If successful, the borough will use the funds to pave the recycling center and to install new signage.

■ Public Works supervisor Robert Doyle will retire effective Dec. 31.

■ The borough and PBA 100 have come to an agreement with their contract which runs from Jan. 1, 2003 through Dec. 31, 2005.

■ The mayor and clerk were authorized to execute right of way acquisitions and construction easement deeds for various parcels of land along Hamilton Blvd. due to the impending road reconstruction project.



U.S. Factory Outlets in Golden Acres Shopping Center held grand opening ceremonies last week. Special invited guests look on as Middlesex County Chamber of Commerce President Luke Evola, U.S. Factory Outlets owner Fred Raiff, manager Art Silfin and Vincent Polimeni, owner of Golden Acres Shopping Center cut the ribbon.



U.S. Factory Outlet owner Fred Raiff welcomes shoppers.



Shoppers lined up to check out the new discount store.

## U.S. Factory Outlets Opens in Golden Acres

The official opening of the U.S. Factory Outlet (USFO) store took place last Thursday morning, with a ribbon cutting ceremony attended by many officials including U.S. Factory owner Fred Raiff and the owner of Golden Acres Shopping Center, Vincent Polimeni. Also attending the opening were Borough Council members, Police Chief Robert Merkler and members of the Middlesex County Chamber Regional of Commerce.

After the ribbon cutting, the doors to the store were flung open and hun-

dreds of curious shoppers streamed in the store to take advantage of the opening day sale items. Greeting each person as they entered the store was owner Fred Raiff and manager Art Silfin, shaking hands and even handing out shopping carts.

The store soon was filled with shoppers looking for grand opening bargains. More than half of USFO's merchandise consists of apparel. The other half of the store contains a variety of merchandise, from automotive to home furnishings. New inventory ar-

rives every day at the store. They are the exclusive outlet for approximately 500 manufacturers, catalog companies and mail order companies.

Manager-in-training Steve Miglione commented, "I am sure that U.S. Factory will do well here in South Plainfield. USFO caters to their customers. They can special order items and can also use our lay-a-way."

U.S. Factory Outlet is located in the Golden Acres Shopping Center once occupied by Bradlees. The South Plainfield store is the first USFO in New Jersey.

## Resident Files Lawsuit Against Borough

On May 17, Glen Ettman, a nine year resident of South Plainfield, filed a civil lawsuit in the United States District Court against the Borough of South Plainfield, Mayor Dan Gallagher, the South Plainfield Ponytail Association and certain other defendants.

The suit alleges violations to his first amendment rights. The suit will be amended to add Fourteenth Amendment violations, which protects the rights of all parents.

In June of 2002, the Ettman's daughter was removed from the all-star traveling girls softball team and Ettman was terminated from his coaching duties.

Although Ettman has joint custody of his daughter, Veronica, now age 12, and almost 50/50 parent time, her "primary residence" is in North Plainfield with her mother.

Prior to the incident, Ettman's daughter played recreation softball in South Plainfield for four years, with her father coaching three of those four years. Ettman's daughter is not listed as a plaintiff.

Ettman is seeking certain compensatory damages and five million dollars in punitive damages, alleging that the incident has deteriorated the relationship with his daughter and members of the community. He added that half of any punitive settlement will be donated to the New Jersey Council for Children's Rights (NJCCR).

### Clarification

Please note that Jennifer Vedutis (listed in last week's Milestones), who recently graduated from Northeastern University, graduated with honors.

**Subscribe  
online at  
www.sobserver.com**

**South Plainfield  
Observer**

Your #1 Source for South Plainfield News

Great prices on a large selection of

- Hanging Baskets • Annuals
- Herbs • Geraniums • Vegetables
- House Plants • Cut Flower Bouquets and More

All Planters, Bamboo & Cut Flowers On Sale!

\$10 Off \$100 & Up \$5 Off \$50 & Up

Park Avenue Flowers, Inc.

1620 Park Ave, South Plainfield 908-561-4300

Special Orders Welcome

INSIDE  
GREAT FARMERS MARKET

Where you are always treated like one of the family

**Carousel**

**Want a New Look?**

Stop in Carousel Hair Salon for an appointment.  
We're always happy to see you!

**307 Oak Tree Ave. 908-668-8397**

Tues-Fri 8am-4 pm, Sat 6:45 am-3pm, Closed Sun & Mon

## 'Click it or Ticket' Campaign Underway

The South Plainfield Police Department will be participating in the nationwide CLICK IT OR TICKET Mobilization from May 24 to June 6.

During this mobilization, the police department will conduct a zero tolerance seat belt enforcement campaign. Motorists who are not buckled up will be issued a ticket. This agency will be utilizing both roving and fixed

seat belt usage checkpoints throughout the borough. This high profile law enforcement is a two-pronged effort, enforcement and education, in an effort to save lives and decrease injuries, through the increase in seat belt and child restraint usage.

The goal of this program is to increase the statewide seatbelt usage rate to 84%. The current seat belt usage rate in New Jersey is 81% and the rate has steadily risen in the last six years.

More than 32,500 motor vehicle occupants in the United States were killed in traffic crashes in 2002, the last year for which complete statistics are available. In 2002, there were 773 motor vehicle fatalities in New Jersey. More than half of the motor vehicle occupants killed were not wearing a seatbelt.

For further information about these programs, contact Sgt. Kevin Murtagh at (908) 226-7679.

## Police Respond to Near Drowning

Police responded to a call on Gray Drive on the report of a near drowning of a 17-month-old child, identified as Kishen Mangra. The child's father, Manrag Mangra, stated that he had been with his son and he had left a toy outside. The child went to retrieve the toy. After a few minutes, the father realized that the child had not returned to the house. He went outside to look for him, and found him, face up unconscious, in a neighbor's fish pond, approximately 60 feet from his home in an unfenced rear yard. The father recovered him and brought him back to his home.

The child regained consciousness prior to police arrival. He was transported to Robert Wood Johnson Hospital where he was admitted for observation.

Middlesex County DYFS was notified by the police as required.

## ATTENTION LADIES!

Summer is Just Around the Corner... Are You Ready?



\*Tour club for details.

**www.ladiesworkoutexpress.com**



Get Fit with our 30 Minute  
Total Body Workout

Already a member of  
another fitness center?

**SWITCHOVER NOW!**

Use the balance of your  
membership with us!\*  
**ONLY \$49 DOWN!**

- Ladies Only • Weight Loss System
- 26 Station Circuit Training
- Fast - Safe - Simple • Quick Results

**SOUTH PLAINFIELD**

**902 Oaktree Road**

Intersection of Park Ave. & Oak Tree Rd.  
Across from the Super A&P

**(908)756-9911**



# Events Around Town

## Volunteer Fire Dept. Car Wash

June 5

The South Plainfield Volunteer Fire Dept. will hold a car wash on Saturday, June 5 from 9 a.m. to 3 p.m. at the firehouse on Maple Ave. Cars and SUV's are \$5; trucks and vans are \$7.

## Our Lady of Czestochowa Feast

June 8-12

The Annual Feast of Saint Anthony at Our Lady of Czestochowa starts June 8 and runs through Saturday, June 12.

There will be plenty of rides, games, food, including homemade Polish/Italian food, hot dogs, burgers, french fries and beverages.

Advance tickets worth \$18 can be purchased for only \$10 at The Corner Deli on Hamilton Blvd., Dave's Stationary on Sampton Ave. and Sal's Spirit Shoppe on Park Ave. Tickets are also on sale at the church hall after all masses and on Tuesday, June 1.

## Adult Tag Art Program at Library

June 7

There will be an adult craft program entitled "Tag Art" at the Library on Monday, June 7, from 10:30 to 11:30 a.m.

The program will give participants tips on how to make custom-designed "Tag Art" cards. It will be presented by Practical Crafting Instructor Ronda Wisniewski. Students are requested to bring a pair of scissors, a pencil with an eraser, and a glue stick. All other materials will be provided. Class size is limited, pre-registration is required.

For more information, call (908) 754-7885 or visit the Library's website at [www.southplainfield.lib.nj.us](http://www.southplainfield.lib.nj.us).

## South Plainfield Summer Drama Workshop Auditions

June 7-9

The South Plainfield Summer Drama Workshop will hold auditions for this year's production of *The Pirates of Penzance* on June 7, 8 and 9 from 6:30 to 9 p.m. at the South Plainfield Middle School.

Auditions are open to all students completing sixth through 12th grade and one year post high school gradu-

## What's happening in MAY/JUNE

Daily Events  
9-11 AM Coffee & Cake  
9 AM-4 PM Cards & Pool  
(908) 754-1047

The Senior Citizen's Center is open Monday through Friday 8:30 a.m.-5 p.m.  
**NOW OPEN SATURDAYS 9:00 AM-12:30 PM—CREATIVE PAINTING 10AM**

## Senior Center EVENTS

MONDAY	TUESDAY	WEDNESDAY	THURSDAY	FRIDAY
<b>EVENTS</b> <b>June 10: Le Miserables at NJ PAC</b> <i>We are looking for volunteers to help our Labor Day Parade Committee</i> <b>Sign Up at the Center</b>				
<b>CENTER CLOSED</b> <b>MEMORIAL DAY</b> <b>31</b>	<b>1</b> Bingo 10am-2pm Ladies Social Grp 10am Lunch Available Computer Class 12 or 2pm	<b>2</b> Exercise 8:45-9:45 Line Dancing 10-11:30am Movie Time 11:30am AARP Crafts 1pm Computer Class 11am & 1pm Atlantic City Trip 9am	<b>3</b> Weekly Shopping Pathmark 9am Practical Crafting 10-11am Pinochle Club 1pm	<b>4</b> Bingo 10am-2pm Pizza lunch available Mediation Class 9am Bridge Club 12:30 pm
TO SIGN UP FOR MEMBERSHIP IN THE SENIOR CITIZEN'S CENTER, VISIT THE CENTER.				

ation, who are South Plainfield Residents or who attend school in South Plainfield. Students should prepare an appropriate tune to sing. For more informations, check out our website at [www.spsdw.com](http://www.spsdw.com) or call (908) 561-5255.

## Girl Scouts Holding Pancake Breakfast

June 12

South Plainfield Girl Scouts will be holding a pancake breakfast on Saturday, June 12, from 9 a.m. to noon, at the Elks Lodge #2298, 1254 New Market Ave.

The menu will feature pancakes, bacon, sausage, milk, orange juice, coffee and tea and will be prepared by the members of the Elks Lodge.

The cost is \$7 for adults and \$3 for children under 12 years of age. For tickets call (908) 756-4530, or (908) 755-9251.

## Baseball Club Chinese Auction

June 25

A Casino Royale and Chinese Auction is being sponsored by the SPJBC on Saturday, June 25 at the Italian American Club from 7 p.m. to midnight.

The cost is \$50 per person and includes an open bar and buffet. Each guest will receive \$500 in play money. Money must be redeemed for Chinese auction tickets, which can be used as

chances to win one or more prizes.

For tickets contact Stacy Lake at (908) 757-9531. Tickets are limited to the first 100 people. Get your tickets early, first come first serve.

## Rec Plans Trip to New Orleans

Sept. 11-19

South Plainfield Recreation is planning a trip to Biloxi and New Orleans Saturday, Sept. 11 to Sunday, Sept. 19. The trip includes: A guided tour of New Orleans, eight nights deluxe hotel, including four nights in a luxurious Gulf Coast Casino Hotel, Jazz Cruise on a Mississippi Riverboat, a tour of NASA's Stennis Space center and much more! The price also includes deluxe motor-coach transportation, 14 meals, eight breakfasts and six dinners.

For reservations, contact Mike English at (908) 226-7714.

## — Out of Town —

## New Brunswick High School Reunion

June 4-6

New Brunswick High School Class of 1954 is planning its 50th Anniversary Reunion on the weekend of June 4 through June 6. The main reunion be held on Saturday, June 5 at the Cook College Center, Rutgers.

Contact the following committee members to submit your name and address if you have not been contacted: Cliff Ellis at (609) 883-7992, Ida Kalman White at (609) 395-8416, Roger Locandro at (609) 397-3720, Loretta Coffaro Montgomery at (215) 489-0825 or Charlie Piparo at (732) 821-9748.

## B'nai B'rith Married Couples Meeting

June 6

The B'nai Brith Ketubah Married Couples Unit (40+) will be meeting for a buffet brunch at The Kenilworth Inn, in Kenilworth on Sunday, June 6 at 11:30 a.m. The cost is \$12.95 per

## SEND YOUR EVENTS TO:

South Plainfield Observer, 1110 Hamilton Blvd., Suite 1B, South Plainfield, NJ 07080 or fax (908) 668-8819; email [ggnan@aol.com](mailto:ggnan@aol.com).

area, will hold its monthly "Meet and Greet" social at the Saddle Brook Marriott hotel, located between Route 80 and the GSP in Saddle Brook on Tuesday, June 8 at 8 p.m.

Prospective members (women, 5'10" and taller and men 6'2" and taller and over 21-years-old) are encouraged to inquire.

For further information about the club, call our 24-hour hotline service at (973) 267-3648 or visit our website at <http://www.njtall.org> or email at [newjersey@tall.org](mailto:newjersey@tall.org).

## Handcraft Festival in Merchantville

June 12

The annual Merchantville Downtown Handcrafts Festival will be held on Saturday, June 12 from 9-4 p.m. Join us all day in our beautiful historic downtown for a great show brimming with quality handcrafters. Quilting, jewelry, photography, painting, fiber art, sculpture, woodwork and lots more! Live music, amusements, kids' games, sand art, face painting and only 10 minutes from Philadelphia. Rain or shine!

Find out more at our website at [www.merchantvillennj.com](http://www.merchantvillennj.com) or call 856-663-4001. This event is FREE!

## Developmental Disabilities Program

June 23

On Wednesday, June 23 at 6 p.m., individuals with developmental disabilities and their family members are invited to attend a meeting to learn about Essential Life Style Planning. Bill Gaventa, of the Elizabeth M. Boggs Center on Developmental Disabilities, will be giving an Introduction to Essential Life Style Planning. Additionally, new programs available through the "JFVS One Community Integration Project" will be discussed. A light supper will be served.

The program will be held at the Jewish Family and Vocational Service of Middlesex County, 515 Plainfield Ave., Suite 201 in Edison.

For more information or to RSVP, call Helene Lener at (732) 777-1940 ext. 141 or email to [h.lener@jfvs.org](mailto:h.lener@jfvs.org).

## Our Lady Of Czestochowa R.C. Church

807 Hamilton Blvd., South Plainfield

### MASS SCHEDULE

Daily at 8am except Wednesdays

Regular Weekend Schedule:

Saturday evenings 5:30pm

Sunday mornings 8am and 11am



TAX RETURNS PREPARED • WILLS, CLOSINGS  
INDIVIDUAL AND BUSINESS • PERSONAL INJURY  
WORKERS COMPENSATION

PAUL W. GRZENDA

CERTIFIED PUBLIC ACCOUNTANT  
ATTORNEY AT LAW

HOUSE CALLS AVAILABLE

300 MAPLE AVE.  
SOUTH PLAINFIELD

(908) 754-8008

## FAST APPROVALS...GREAT RATES...PERSONALIZED SERVICE

We Specialize in No Cost Refinancing  
Free Pre-Qualifications  
Purchases • Refinance • Debt Consolidation  
Past Credit Problems Understood  
No Income Verification Loans  
Borrow up to 125% of Value • Loans  
Mixed Use and Commercial Properties



Se Habla Espanol

**908-822-0090**

2325 Plainfield Ave. Suite 2E South Plainfield, NJ



# Top SPHS Cooperative Education Awards Announced

The popular South Plainfield High School Cooperative Education/School to Careers Program announced this year's top award winners. The CE Student of the Year and four Outstanding Achievement awards are being sponsored by Commerce Bank, South Plainfield Branch, an ongoing Business/Education Community Partnership.

This year's CE Student of the Year is Jeanine Christopher, daughter of James and Theresa Christopher of Faye St. Jeanine will be attending Kean University next fall. Jeanine will be majoring in Public Administration with a concentration in Non-Profit Organizational Management. Her CE job is at Our Small World Pre-School and Kindergarten programs on Hamilton Blvd. Director Cheryl Hughes said, "She is extremely responsible, reliable and mature for her age. Jeanine is a sheer delight to work with." Along with working at the daycare center, Jeanine works countless hours at Flanagan's Restaurant, owned by John Zimminski. A \$500 check will be presented to Jeanine by the Commerce Bank at the High School Academic Awards Night on



CE Student of the Year Jeanine Christopher (seated left), Courtney Krajcik and Kristen Kunie. Standing left to right are William Snell, assistant vice president and branch manager of Commerce Bank; Julie Skula, assistant manager Commerce Bank; SPHS seniors Jonathon Alves and Christopher Dickerson, Principal Dr. Ken May and CE Coordinator Dee Falato.

June 1.

Commerce Bank will also be honoring the following four students with checks for \$200 each on their selection as CE Outstanding Achievement Award Winners:

Courtney Krajcik, daughter of Ken and Carol of New Market Ave., will be attending Centenary College next fall. She will be majoring in Equine Studies with a concentration in busi-

ness management and training.

Kristen Kunie, daughter of Michele of Carmine Ave., will be attending Kean University. Kristen will be majoring in Education and plans a career

of teaching.

Chris Dickerson, son of Christopher and nephew of Cynthia of Matis St., will be attending Hampton University this fall. He will be majoring in Music Engineering Technology.

Jonathon Alves, son of John and Olga of Susan Terr., will be attending Middlesex County College for Fashion Merchandising and Marketing.

William Snell, assistance vice president and branch manager of Commerce Bank, strongly believes in his participation in this education business partnership between Commerce Bank and the High School CE Program. "A program like this gives every student opportunities to explore career options and real work opportunities with community leaders and mentors. It is an honor to encourage and support these fine outstanding seniors."

South Plainfield High School Principal Dr. Ken May beams with pride as he commends the CE program on the 16<sup>th</sup> year in a row as the top program in the state of New Jersey. "I attribute this continued success to coordinators Dee Falato and John Lartaud.

## Quinten Carter Recognized by Metuchen Rotary Club

The Metuchen Rotary Club recently awarded the Lineman of the Year trophy to Quinten Carter, a senior at South Plainfield High School. Quinten has played football at South Plainfield High School for four years and was told by his coach, Philip McGuane that he had been nominated for the award.

Quinten would like to thank his coach and the rest of the coaching staff for his success for allowing him to play football and teaching him to always play his best.

In September, Quinten will be entering Dean College in Massachusetts where he will continue to play football.



From left SPHS Football Coach McGuane, Principal Dr. May, Quinten Carter and Athletic Director Michael Buggey.

## CHARLIE'S

NOW OPEN  
SUN-THUR. 12-9  
FRI. & SAT. 12-10

ICE  
CREAM

HOMEMADE SOFT & HARD ICE CREAM,  
CAKES, NOVELTIES  
WHOLESALE DISTRIBUTORS



FACTORY

3600F OAK TREE ROAD  
SOUTH PLAINFIELD  
908-769-0016

## MEMORIAL DAY WEEKEND!

(Saturday 10-6, Sunday & Monday Closed)

**ORDER YOUR HOMEMADE  
HOLIDAY SALADS NOW!**

- Red Skin Potato • Cole Slaw
- Macaroni Salad • Pasta Salad

*Graduation Catering - Hot & Cold*

**BEST  
POTATO  
SALAD ON  
EARTH!**

"Quality Food Everyday Heroes"

**HOMETOWN HEROS**  
340 Hamilton Boulevard  
908-755-HERO (4376)  
OPEN 7 DAYS

# Parker Gardens <sup>14 acres</sup>

## "Contain" Yourself!

Just in time for the Memorial Day weekend,  
turn your backyard into an instant summer sensation with  
award-winning **container gardens** from the area's  
most complete selection!

reg. \$1.<sup>99</sup> ea.

# 99¢

with this coupon  
while supplies last

**4" Flowering Annuals**

Super selection of vibrant  
Impatiens, Ageratums,  
Petunias, Marigolds,  
Gomphrenas & more!

Must present coupon at time of purchase. Not valid with  
any other discount or promotional offer. Coupon cannot  
be converted to cash. Offer valid through 6/1/04.

SPO

*Have a basket of fun!*

Choose from Moss and Coco Fiber hanging  
basket gardens beaming with premium  
annuals and accent plants suitable for both  
sun and shade!

**14" - 18"** Hand Crafted & Designed Moss  
English Basket Gardens with up to 25 plants

**14" - 20"** Uniquely Designed Coco Fiber  
Baskets bursting with colorfully coordinated  
plants

Container Gardens available in Window Boxes,  
Bowls and Urns in many sizes and styles!

**Complete Landscaping Services Available!**

Design • Build • Installation

1325 Terrill Road, Scotch Plains, NJ 07076

Call: 908-322-5553 or visit [www.parkergardens.com](http://www.parkergardens.com)  
Mon.-Wed. 7-5 • Thur. & Fri. 7-7 • Sat. 7-6 • Sun. 9-5







American Team, A League



National Team, A League



American Team, C League



National Team, B League



National Team, C League



American Team, B League

## Ponytail Association Holds Appreciation Day

The annual Ponytail Appreciation Day was held on May 16 at the Ponytail Complex. Both the C and B leagues sent five players and each team in the A league sent six players to play a nine inning game.

In C league, the American Team, made up of players from the Gems,

Rubies and the Pearls, and managed by Joe Scudato, wore orange tie-dyed shirts. The National Team, made up of players from the Sapphires, Diamonds and Emeralds and managed by Sally Gillis, wore yellow tie-dyed shirts.

In B league, the American Team,

made up of players from the Hawks, Eagles and Blue Jays and managed by James Bishop, were dressed in blue tie-dyed shirts. The National Team, made up of players from the Doves, Robins and Cardinals and managed by Tim Crilley, wore red tie-dyed shirts.

In A league, the American Team was made up of players from the Bobcats, Lions and three players from the Panthers. They were managed by Mark Sutherland and wore purple tie-dyed shirts. The National Team was made up of players from the Tigers, Jaguars and three players from the

Panthers. The National Team manager was Steve Senz.

The weather was perfect and everyone had a great time. Special thanks to the Recreation Department for supplying the colorful assortment of tie-dyed t-shirts for the girls to wear.

Ponytail Players, don't forget that our end of the year pool party is June 11, at the South Plainfield Community Pool. For more information and to view additional photos, visit our website at [www.spponytail.com](http://www.spponytail.com).

—Submitted by James Bishop

## Holiday Schedule at Recycling

The Recycling Center on Kenneth Ave. will be closed on Tuesday, June 1 due to the Memorial Day holiday weekend. It will be open instead from noon to 7 p.m. on Wednesday, June 2. Regular hours at the Recycling Center are noon to 7 p.m. on Tuesdays, and 8 a.m. to 3 p.m. on Fridays and Saturdays.

The Yard Waste Site, at the end of Kenneth Ave., will also be closed on Tuesday, June 1 and open instead on June 2.

Both facilities will be open as usual from 8 a.m. to 3 p.m. on Saturday,

May 29.

Yard Waste regular spring/summer hours are noon to 7 p.m. on Tuesdays, and 8 a.m. to 3 p.m. on Saturdays.

2004 Yard Waste Decals are available in the Municipal Clerk's office in Borough Hall. Bring the registration of the vehicle you will be using.

For updates, call the Recycling Hotline: (908) 226-7620.

## Bosch Wins Glitter Award

Robert Penett, Operations Manager of S-B Power Tool Company, accepted the South Plainfield Clean Business Association's Glitter Award recently. CBA President Joe Diegnan presented the award to Penett at the New York Regional Service Center located at 121 Corporate Blvd. S-B Power Tool is a division of Bosch, a privately owned company based in Germany with divisions in over 90 countries and 220,000 employees worldwide. The award was presented in recognition of Bosch's attractive appearance and excellent long-term maintenance of the property.

Bosch had the building constructed in 1985. It has housed various divisions over the years, currently the regional power tool repair service. Penett said that the company puts a lot of money into property maintenance, and the fourteen employees take pride in their neat working environment. The building was painted less than two years ago. The landscaping, installed when the property was developed, is mature and well kept. Penett said that TruGreen does this work and is responsible for picking up litter as well. However, litter is not a significant problem in this neighborhood. Penett said this is a good area, where property owners look out for one another and all are interested in keeping their grounds looking good.

Penett said that Bosch is glad to receive the recognition represented by the Glitter Award. They enjoy being in South Plainfield, and have found the borough government easy to deal with. When needed, response by the Fire Department and the Police Department has been prompt, and the Corporate Boulevard neighborhood is an excellent area. He thinks they set a good example. If everyone would take the time to keep his place looking good, the world would be a happier place.

The CBA gives Glitter Awards to South Plainfield businesses that are unusually well maintained or have recently improved their appearance through renovation or landscaping. Membership in the CBA is open to all businesses that share its goals of enhancing the appearance of commercial districts through property maintenance and litter control. For more information, contact A. Tempel at (908) 226-7621.

## Police to Hold June 5 Auction

The South Plainfield Police Department will be holding an auction at 10 a.m., June 5, at the Road Department on Spicer Ave. Preview will be from 9 to 10 a.m. with the auction starting immediately thereafter. Items to be sold will include bicycles and tools. All items are sold as is. Cash only. The auction will be held rain or shine.

## Slim and Tone

30 Minute Workout for Women

## Lose Weight! Improve Health!

150 Women Strong and Growing!

- Convenient ALL day hours  
M-F 8-7:30 Sat 8-2
- Clean, Private Setting
- Mother/Daughter Special Rates
- Friendly, helpful staff
- Ideal for ages 13+

(908) 769-0009

Staff Certified in CPR

\*With one year EFT or Prepaid membership

**Slim and Tone-**  
**it just got easier**

Rosemary Holt, PROPRIETOR  
Nancy Pasternak, CO-MANAGER  
Christine Millard, STAFF MEMBER  
Melissa O'Connor, STAFF MEMBER  
Amy Leso, STAFF MEMBER

**2601 Hamilton Boulevard**

(Between Home Depot & Durham Ave. 1 Block from the Car Wash)



**SLIM  
AND  
TONE**

30-Minute Workout  
for Women

Improve  
muscle tone &  
cardio fitness

**\$39  
Monthly\***  
No Initiation or Sign up Fee



## Sacred Heart Church

149 South Plainfield Ave.  
South Plainfield, NJ

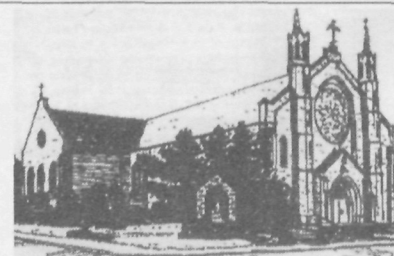
Rev. John Paul  
Alvarado, Pastor

### Sacrament of Reconciliation

Saturday 10-11 a.m., 4-4:45 p.m.  
and after 5 p.m. Vigil Mass

### Mass Schedule:

Saturday Evening Mass 5:00 p.m.  
Sunday 8:00, 9:30, 11:30 a.m.  
Weekdays 6:30 a.m. (except Monday) 9:00 a.m. (church)  
Monday Eve. Mass with Miraculous Medal Novena Prayers 7 p.m.  
Holy Days 7 p.m. (Vigil); 6:30 and 9 a.m., 12:10 p.m. and 7 p.m.





# Girl Scouts Collecting Old American Flags

Senior Girl Scout Troop 430 of North Edison/Metuchen is collecting faded, old or torn American Flags through May 30. This service project is a component toward the Gold Award Project. The flags will be retired in a respectful way in a joint venture between Troop 430 and The American Legion Post of Metuchen.

South Plainfield merchants and businesses designated as flag drop off locations, are South Plainfield Library, Wachovia Bank on Plainfield Ave., South Plainfield Post Office on Oak Tree Rd. and the Wachovia Bank on Oak Tree Rd.

Community support is appreciated! Any questions, please call (908) 753-2397.

## police report

- On May 18 a Rahway Ave. resident reported that two alarm clocks, a portable phone and assorted costume jewelry were missing from the house. There were no signs of forced entry.
- On May 19 a Calderone St. resident reported receiving a benefits letter from Staples. She does not work for them and believes someone is using her personal information.
- A North Plainfield resident reported that his front license plate had been stolen from his vehicle while parked at Party City on Hadley Rd.
- Panel Oven on Sage St. reported that lock on a filing cabinet drawer had been broken. Nothing was missing. A suspicious person had been seen in the building earlier.
- On May 22 Zyy'kirrah Markita Casado, 19, of North Plainfield was arrested for an outstanding warrant and hindering apprehension at a motor vehicle stop.
- On May 23 White Castle on Stelton Rd. reported receiving a fake \$10 bill from a customer. When confronted, the customer left the store.



SPHS student Robert Hoffman recently took first place in the Middlesex County Bar Foundation's "Project Law 2004" essay contest, and also recently taken first place honors in the Middlesex County Writers Conference's Journalist Award in the dramatic script category. He is pictured here with his teachers, Donna Timko and Shane Kagan.

- A Lowden Ave. resident reported the screen to his back porch door had been cut. No entry was gained.
- A Somerset resident reported that a rock had been thrown, cracking his windshield while driving down New Brunswick Ave.
- Pathmark reported that security officers tried to detain a female shoplifter who struggled, dropped the stolen items out of her handbag, and ran into a waiting vehicle.
- On May 24 a Clinton Ave. resident reported that the rear window of the door to his home was broken and the basement door kicked in. Nothing was taken.

## From the South Plainfield Library Bookmarks

By Chris Grippio

It's almost here! The South Plainfield Public Library Book Sale will be next Saturday, June 5, at the Library from 9 a.m. to 3 p.m. We have been getting many donations and there is still time to donate books. Book sales have become a significant source of supplemental funding for libraries in general. The funds raised go to a variety of library services, everything from programming to materials. So please mark the date on your calendar and come down and support your Library.

Many of you are getting ready to relax this Memorial Day weekend. Don't forget that the Library can help you have an enjoyable weekend. If you want books, we have both hard and paperbacks (paperbacks are great to take to the beach or the park). We also have music CDs, books on tape (wonderful for listening to while gardening, cooking, etc.), or if you are so inclined, lots of videos and DVDs to watch while stretched out on the couch — any video items checked out on Friday or Saturday will not be due back until Tuesday because we are closed Monday for the holiday. We also

have lots of magazines for you to check out, gardening books and magazines to get your garden in shape for summer, and books on building outside structures so you can build that deck you always wanted.

Also, it is not too late to register for Ronda Wisniewski's craft class "Tag Art" cards. Tag art cards are special cards you can create for any occasion. You can see examples of this project as well as other upcoming crafts at the Library in the display case as you enter the main doors. It will be held at the Library on Monday, June 7 from 10:30-11:30 a.m. The last day you can register for this class is June 4 and you can register by calling the Library at (908) 754-7885.

Miss Linda will also be conducting her regular storytime/craft programs this week. They will be Tuesday at 10:30 a.m., Wednesday at 6:30 p.m. and Thursday at 1:15 p.m. There will be no Books-n-Babies program on Friday, June 4, but it will be back the next Friday.

Have a great Memorial Day weekend and please remember in passing all of the men and women who gave their lives for this country and for which we celebrate this holiday.

## Dear Editor:

How do you lead a school of children who are experiencing the most profound changes in their lives? How do you battle, day after day, to make sure the children at this most precarious age experience being wanted, cared for, guided? If you are leading the South Plainfield Middle School, you lead with energy, honesty and intelligence. You are highly visible, you are approachable, you know the children by name, you encourage them to increase their skills in order to score well in state testing, you give them special one-on-one guidance in math, you take over classes and teach them, you make sure the halls are quiet and the classrooms are busy but pleasant places, you go to all the school activities, you create rewards and educational "GEPA" challenges and rallies and special classes, you listen to your staff and work with them for the sake of these most puzzling, frustrating, yet fascinating and lovable children. You are Mr. Fred Oberkehr.

We, the faculty and staff, are disheartened and dismayed over the decision to transfer Mr. Oberkehr from a position he had grown into with real maturity and insight. The exciting transformation of the Middle School has begun, is growing day-by-day, and now, the leadership is gone. How do you explain this? Why do you thank and congratulate a principal by transferring him?

We extend our thanks to you, Mr. Oberkehr. We wish you and your wonderful family well. We will continue to build on what you have accomplished for the Middle School.

**GARAGE SALE**  
**Huge Block Sale**

**OXFORD AVE.**  
(off Park between Clarke Ave. and E. Crescent Pkwy.)

**Fri. & Sat, May 28 & 29**  
**9a.m.-2p.m.**

Lots of name brand men, women's and children's clothing, new & used toys, household, etc.

**RAIN OR SHINE**

Custom Creations & Gifts, Inc.

UNIQUE GIFTS FOR DAD

ORDER NOW FOR FATHER'S DAY

24 South Plainfield Ave.  
908-755-5060

**AIDA SANTOS**  
ASSISTANT VICE PRESIDENT  
BRANCH MANAGER

**Valley National Bank**

Durham Ave. & Hamilton Blvd  
South Plainfield, NJ 07080

(908) 757-5868  
Fax (908) 757-0494

Patricia Higgins	Nellie Attardi	Diane M. Pappalardo	Marci Alvarez
Quida Giannakis	Tracy E. Tomasulo	Linda Pansaville	Cathy B. B. B.
Abel E. Salubing	Debra K. K. K.	Donna S. Tierney	Bligh Schugart
Denise Hogan	Sam D. D.	Robert Cepale	Nicholas Scalzo
Jean Plate	Beverly Malinowski	Rosemary Grillo	Paul P. P.
Ralph Glass	Vernie Allen	Cheryl J. J.	Linda Schuebel
Grace De Sillis		Carl Mark	John H. H.
Shirley Cepola		Shari Lepore	Dana Marotto
Michael Copiolo		William R. Morca	Joseph B. B.
John H. H.		William A. A.	Ann M. M.
Michelle Hoke		Gifford R. R.	Elizabeth Paul
Lusan Jennings		Jan Smith	James P. Makowski
Robert J. Cousins		Kathleen W. W.	Elizabeth V. V.
Virginia M. Cocco		Anne Holtz	Susan S. S.
Barbara Hepburn		Arline Adamczyk	Suzanne W. W.
Jennifer Chaudh		Margaret Dickel	Jusa Campoli
Gerardine Klein		Pete P. P.	Theresa Fischer
Rachael Klausner		Corteen Tedeschi	Janet D. D.
Susan Plester		Barbara Shrank	Carol Blackbarn
		Susan W. W.	Victoria Guillen
			Susan D. D.



# Cultural Arts Commission's Spring Into Dance, a Celebration of Performing Arts

by Patricia Abbott

"Spring Into Dance" was the theme, a perfect description for the SP Cultural Arts Commission's (CAC) free event. The afternoon opened with a presentation by The Okra Dance Company in a show called, "Dance, Dance, Dance," and described as "a multicultural tour to

Africa, Poland, Asia, Israel, Caribbean and other nations around the world through the social dances that reflect each culture." Two professionals performed a variety of dances in a nearly seamless segue. The captivating duo moved through a Chinese sword dance, polka, waltz, African Yembala and Tango with amazing ease and grace. Their portion of the event

ended with an invitation for audience members to join them on stage for a brief warm up dance session. The second half of the program was a presentation by three area dance studios, Jo-Ann's Dance Studio-the Performing Arts Center, Spotlight on Dance and Plainfield Performing Arts Center. The schools alternated performing several numbers. Jo-Ann's Dance Studio presented their company, Le Centre Ensemble. Spotlight on Dance featured both company members and regular class dancers. CAC member Melanie Friedman was the "Spring Into Dance" event coordinator and program designer, and Barbra Friedman was MC and stage manager. Lory Alcaro ran the lights and sound system. The South Plainfield Junioresettes sold refreshments during intermission.



## Sports

### Sacred Heart Track Team Results

The Sacred Heart School Spring Track Team from South Plainfield competed in the 2004 Central Jersey Catholic Track Conference Relay Championships on Saturday, May 15 at Cranford High Memorial Track in Cranford. Fifty-six Sacred Heart runners grouped into teams of four placed in 17 out of 20 events against nine other schools. The Sacred Heart Team took three first, seven second, four third, three fourth and one sixth place, winning 12 gold, 28 silver, and 32 bronze medals. In addition, our runners set three new conference records. Congratulations to ALL runners!!! Proud medal/pin winners are:

Event	Place	Relay Team	Time
Girls K, 1, 2 4x100	2	R. Bach, M. Mathis, E. Demegillo, A. Obode,	1:21.83
Boys K,1,2 4x100	4	A. Wright, P. Bogart, E. Garcia, D. Eke	1:23.15
Girls 3,4,5 4x100	4	S. Johnson, J. Clark, K. Moctezuma, J. Allen	1:09.48
Boys 3,4,5 4x100	2	K. Whitaker, R. Lapitan, W. Gerlitz, A. Eke	1:08.85
Girls 6,7,8 4x100	1	M. Simons, G. Pinto, K. Cooper, J. Simmons	56.77 NewRecord
Boys 6,7,8 4x100	2	J. Madsen, M. McHugh, J. Abel, A. Wright	56.49
Girls 3,4,5 4x200	6	S. Johnson, J. Clark, K. Moctezuma, J. Allen	2:36.18
Girls 6,7,8 4x200	2	M. Simons, K. Cooper, G. Pinto, J. Simmons	2:04.84
Boys 6,7,8 4x200	2	J. Madsen, M. McHugh, J. Abel, A. Wright	1:58.51
Boys 3,4,5 4x400	3	N. Muglia, J. Cendana, W. Gerlitz, A. Eke	6:29.57
Girls 6,7,8 4x400	1	M. McHugh, K. Muglia, A. Whitefleet, J. Simmons	4:42.85 New Record
Girls 6, 7, 8 4x400	4	G. Pinto, K. Cooper, M. Simons, S. Romano	5:12.10
Boys 6, 7, 8 4x400	3	J. Abel, J. Madsen, A. Muglia, R. Hohner	4:43.52
Boys 3, 4, 5 Sprint Medley	2	R. Lapitan, N. Muglia, W. Gerlitz, A. Eke	5:33.93
Girls 6,7,8 Distance Medley	2	M. McHugh, K. Muglia, A. Whitefleet, A. Novak	12:23.96
Boys 6,7,8 Distance Medley	3	A. Wright, M. McHugh, A. Muglia, R. Hohner	10:51.10
Girls 6,7,8 Shot Put	3	P. Peterson, K. Douglas	47' 4"
Boys 6,7,8 Shot Put	1	C. Eke, J. Madsen	63' 6" New Record



BUY RITE

LIQUOR

Remember... MEMORIAL DAY!

The place for people of great taste

BLACKSTONE CALIFORNIA Merlot 8.99 750 ml

MIRASSOU SUN SERIES Cabernet 7.99 750 ml

ROSEMOUNT Shiraz 9.99 750 ml

BRANCOTT Sauvignon Blanc Classic 9.99 750 ml

GLEN ELLEN Cabernet, Chard., Merlot, Pinot Grigio 7.99 1.5 liter

MIRASSOU SUN SERIES Merlot, Chardonnay 7.99 750 ml

BLACK SWAN Cab. Shiraz, Chard., Merlot 9.99 1.5 liter

RUFFINO LUMINA Pinot Grigio 9.99 750 ml

WALNUT CREST Chard., Merlot 7.99 1.5 liter

CALITERRA Cabernet, Merlot, Chardonnay 5.99 750 ml

WYNDHAM ESTATE Chard. Bln 222 6.99 750 ml

BERINGER White Zinfandel 4.99 750 ml

SUTTER HOME White Zinf. 6.99 1.5 liter

RANCHO ZABACO DANCING BULL Zinfandel 7.99 750 ml

EPICURO Salice Salentino Reserva, Primitivo Di Manduria 7.99 750 ml

CAVIT Pinot Grigio 11.99 1.5 liter

BLACK OPAL Cabernet, Shiraz, Cabernet/Merlot, Chardonnay 6.99 750 ml

LUNA DI LUNA Chard./Pinot Grigio (Blue), Cabernet/Merlot (Red), Merlot/Sangiovese (Purple) 7.99 750 ml

BLACKSTONE CALIFORNIA Cabernet 8.99 750 ml

CORBETT CANYON COASTAL CELLARS Cabernet, Merlot, Chardonnay 5.99 1.5 liter

HARVEY'S Bristol Cream Sherry 9.99 750 ml

MOET & CHANDON White Star Extra Dry 26.99 750 ml

COOKS Brut, Extra Dry 4.99 750 ml

KORBEL Brut, Extra Dry 10.99 750 ml

TURNING LEAF Cabernet, Merlot, Chardonnay 6.99 750 ml

SIMI Chardonnay 12.99 750 ml

ROBERT MONDAVI WOODBRIDGE Cab. Chard., Merlot 11.99 1.5 liter

ALMADEN Cabernet, Merlot, Chardonnay, Sangria 10.99 5 liter box

PETER VELLA Chablis, Burgundy, White Grenache, Deep Red 8.99 5 liter box

LIVINGSTON CELLARS Merlot, Cabernet, Chardonnay 8.99 3 liter

PAUL MASSON Ruby, Rose, Chablis, Rhine, Burgundy 8.99 4 liter

CANADIAN CLUB 80 Canadian Whiskey 17.99 1.75L

THE GLENLIVET 12 Year Old Premium Scotch Whiskey 27.99 750 ml

CLAN MacGREGOR Scotch Whiskey 15.99 1.75L

SEAGRAMS Extra Dry Gin 15.99 1.75L

BOMBAY Sapphire Gin 18.99 750 ml

SMIRNOFF Vodka 80° 18.99 1.75L

WOLFSCHMIDT Vodka 80° 13.99 1.75L

SAUZA Gold & Blanco Tequila 14.99 750 ml

MALIBU Coconut Rum 13.99 750 ml

CHRISTIAN BROS. Brandy 16.99 1.75L

SOUTHERN COMFORT 70 Cinnamon 21.99 1.75L

JUST DESSERTS Chocolate Chip, Creme Brulee & Thin Mint Chocolate Cordial 15.99 750 ml

DEKUYPER PEACHTREE Schnapps 7.99 750 ml

T.G.I.FRIDAY Blenders 11.99 1.75L

ARBOR MIST Flavored Coolers 5.99 1.5L

STOCK Dry & Sweet Vermouth 4.99 1L

SEAGRAMS 7 CROWN Whiskey 14.99 1.75 liter

JACK DANIELS Bourbon Whiskey 34.99 1.75 liter

DEWAR'S WHITE LABEL Scotch Whiskey 31.99 1.75 liter

TANQUERAY London Dry Gin 29.99 1.75 liter

GREY GOOSE Vodka 80° 24.99 750 ml

ABSOLUT Vodka 80° 30.99 1.75 liter

CAPTAIN MORGAN Spiced Rum 22.99 1.75 liter

COURVOISIER VS Cognac 22.99 750 ml

MILLER LITE, MGD REGULAR & LIGHT 12 oz. Cans 13.99 Case

BECK'S, BECK'S DARK & BECK'S LIGHT 12 oz. N/R Bottles 20.99 Case

COORS & COORS LIGHT 12 oz. Cans 13.99 Case

BUSCH REGULAR & LIGHT 12 oz. Cans 9.99 Case

MILWAUKEE BEST REG., LIGHT & ICE 12 oz. Cans 10.99 30 Pack

YUENGLING TRADITIONAL LAGER OR BLACK & TAN 12 oz. N/R Bottles 14.99 Case

MICHELOB ULTRA 12 oz. N/R Bottles 16.99 Case

HEINEKEN 12 oz. N/R Bottles 20.99 Case

SAM ADAMS LAGER & LIGHT 12 oz. N/R Bottles 20.99 Case

O'DOUL'S NON-ALCOHOLIC LAGER OR AMBER 12 oz. N/R Bottles or Cans 12.99 Case

MIKE'S HARD LEMONADE, HARD ICED TEA OR CRANBERRY LEMONADE 11.2 oz. N/R Bottles 21.99 Case

ALL CASES REPRESENT 24 PACK UNLESS OTHERWISE NOTED.

PRICES EFFECTIVE WEDNESDAY, MAY 26 THRU TUESDAY, JUNE 1, 2004

## LEGAL NOTICES

BOROUGH OF SOUTH PLAINFIELD  
MIDDLESEX COUNTY, NEW JERSEY

LEGAL NOTICE

An appeal has been filed by Central Jersey Orthopaedic requesting a variance from the requirements of the Zoning Ordinance of the Borough of South Plainfield to permit a sign. Proposed sign cannot be erected in a site triangle; and any other variances that may be required, said property being located at 1907 Park Ave. on Block 64, Lot 1 on the South Plainfield Tax Map.

For the purposes of hearing objections to or protests against the granting of said appeal, the South Plainfield Zoning Board of Adjustment will hold a public hearing on Thursday, June 10, 2004 in the Council Chambers, Borough Hall, at 8:00 p.m.

The maps and documents pertaining to this appeal are available for public inspection in the Building Inspector's Office, South Plainfield Borough Hall, Monday through Thursday, between 9:00 am and 5:00 pm.

\$35.00 May 28, 2004

BOROUGH OF SOUTH PLAINFIELD  
MIDDLESEX COUNTY, NEW JERSEY

LEGAL NOTICE

An appeal has been filed by Renata Dolinski requesting a variance from the requirements of the Zoning Ordinance of the Borough of South Plainfield to permit a 6' high fence, not permitted in front setback; only 4' and open mesh; and any other variances that may be required, said property being located at 3208 Beverly Road. on Block 239, Lot 6 on the South Plainfield Tax Map.

For the purposes of hearing objections to or protests against the granting of said appeal, the South Plainfield Zoning Board of Adjustment will hold a public hearing on Thursday, June 10, 2004 in the Council Chambers, Borough Hall, at 8:00 p.m.

The maps and documents pertaining to this appeal are available for public inspection in the Building Inspector's Office, South Plainfield Borough Hall, Monday through Thursday, between 9:00 am and 5:00 pm.

\$35.00 May 28, 2004

BOROUGH OF SOUTH PLAINFIELD  
MIDDLESEX COUNTY, NEW JERSEY

LEGAL NOTICE

An appeal has been filed by Bruce Singleterry requesting a variance from the requirements of the Zoning Ordinance of the Borough of South Plainfield to permit a 12 x 24 (1) story addition. Proposed addition lacks the 30' front setback from Minford Avenue; 24.8' proposed; and any other variances that may be required, said property being located at 249 Oakland Ave. on Block 201, Lot 30 on the South Plainfield Tax Map.

For the purposes of hearing objections to or protests against the granting of said appeal, the South Plainfield Zoning Board of Adjustment will hold a public hearing on Thursday, June 10, 2004 in the Council Chambers, Borough Hall, at 8:00 p.m.

The maps and documents pertaining to this appeal are available for public inspection in the Building Inspector's Office, South Plainfield Borough Hall, Monday through Thursday, between 9:00 am and 5:00 pm.

\$35.00 May 28, 2004

Oak Tree

Discount Wine & Spirits

902 Oak Tree Road, South Plainfield (Across from A&P)

VISA MasterCard DISCOVER

VISA, MASTERCARD & DISCOVER NOW ACCEPTED AT SELECTED BUY-RITE STORES FOR YOUR CONVENIENCE. NOT RESPONSIBLE FOR TYPOGRAPHICAL ERRORS.

908-561-0051

Mon. Tues. Wed. 9-9  
Thurs. Fri. Sat. 9-10  
Sun 10-6



# Sports

Submitted By Bob Nilan

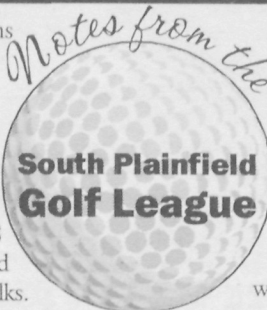
Defending champions Plainfield Animal Hospital bounced back from its loss last week with a resounding 16-4 win over the South Plainfield Elks. Mark Chichvar led the way for PAH with a 38 while Jeff Orth's 40 earned medalist honors for the Elks.

Aiello Chiropractic's dynamic duo, Fred "Catfish" Kirchofer and Eddie Banach, sparked their team to an 18-2 blowout victory over Patti's Construction. Banach's 35 was the low-round of the night and Kirchofer chipped in with a solid round of 38. Mike Behr shot 40 for Patti's in a losing cause.

Kevin Bickunas showed flashes of his old form as he crushed some impressive drives along the way to a 37, but his fine efforts were not enough as Witty's dropped their match to Pornovets, 14-6. Frank Oades had a 40 to lead Pornovets, while some of his teammates had problems finding the fairways.

VFW moved into a four-way tie for first place in the National League with another upset win, this time over Masters, 15-5. Bob Nilan's 37 was the best round for the VFW team; Danny Griffin gained medalist honors for Masters with his 38.

Kevin Boyce continues to hit just fairways and greens and put together another fine round of 36 as Hank's Hackers downed Sport & Social, 13-7. Todd Gregory was low man for Sport & Social with a 39.



Twin City broke into the win column, led by the fine play of Jay Coppolla who shot a 39 as Twin City squeaked by KC's Korner, 11-9. Dan Conti's 40 was the low score for KC's.

Al Szumski of Masters won the closest-to-the-pin competition on the third hole

With a three-way tie for first place in the American Division and a four-way tie for first place in the National Division, it now looks like a wide-open race for championship honors this season in the South Plainfield Golf League. Low Scores for the Night were: Eddie Banach-35, Kevin Boyce-36, Bob Nilan-37, Kevin Bickunas-37, Danny Griffin-38, Fred Kirchofer-38, Mark Chichvar-38, Todd Gregory-39 and Jay Coppolla-39.

League Standings:  
American Division

	W	L	T
PAH	2	1	0
Aiello	2	1	0
KC's Korner	2	1	0
Hank's Hackers	1	1	1
Witty's	1	2	0
Masters	0	2	1

National Division

	W	L	T
VFW	2	1	0
Pornovets	2	1	0
Sport & Social	2	1	0
Patti's Const.	2	1	0
Twin City	1	2	0
Elks	0	3	0

## One Pitch Softball League Forming

As in the past, the South Plainfield Recreation Department will be offering a One Pitch Softball League for residents and industries of South Plainfield. Entry deadline is June 15. The league will play on Tuesdays and Thursdays and the opening games will take place on June 29. Manager's meeting date to be determined.

Registration begins immediately and continues until we reach the maximum number of teams (six) in the league.

The league is open to the first six teams to register. Teams play double-headers on Tuesday and Thursday evenings at either 6 or 7:30 p.m. with rainouts made up on the following day. Each team will pay the official ten dollars in cash before each game.

The fee is \$200 per team. If you have any questions, call the Recreation Office at (908) 226-7713.

## Recreation Soccer Sign-ups

The South Plainfield Recreation's Youth Soccer Program begins on Saturday, Sept. 18. Registration begins on June 7 and ends on Aug. 20. Children between the ages of 6-13 are invited to play. You must be six years old by Oct. 1, 2004. The fee is \$35 per child. Register at the PAL on Maple Ave.

By Lee Flanagan

**GREAT NEWS!** Remtek from South Plainfield began renovations this week on our snack stand. As you know, since May 3 we have been operating our snack stand outside at the South Plainfield Junior Baseball Complex (SPJBC). The Recreation Department, Mike Salici, Pat Driscoll, Joel Burton, Dave Spayder, Stacy Lake and Rick Walton and numerous others have made this happen for us.

Last week I reported that the fire department donated a flag pole to the club to be placed behind our sign out on Kenneth Ave. Well, this week the Flanagan family, along with Irene Flanagan, whose grandson plays in our A-League at the SPJBC, has donated the money to purchase the two remaining poles that are needed. Baseball has been part of Ms. Flanagan's life. Her husband Harold was involved with the Plainfield Youth Baseball Club for eighteen years, but never had the opportunity to get involved in the SPJBC.

Our Memorial Weekend Tournament is coming up this weekend. Come on out and support our 11-year-old and 13-year-old All-Stars. They will be playing against teams from West Milford, North Elizabeth, Union, Piscataway, North Brunswick, North Edison and Scotch Plains. Games start on Saturday and Sunday at 10 a.m. and run all day. Monday morning will be the Championship Games starting at 10 a.m. Enjoy baseball and have a picnic with us. London Broil, hamburgers, hot dogs, sausage and chicken will be available to purchase.

Finally, our All-Star Sunday is coming up on June 6. Next week I hope to announce the kids that will be playing. Also, our League playoffs begin on Monday, June 7. Parents please ask your manager or coach if you have fulfilled your commitments for the 2004

season. The SPJBC Executive Board would like to see all our kids playing in the playoffs. We do not want to penalize your child from playing if you have not fulfilled your commitments, you can also talk to any Executive Board members.



## Charity Softball Tournament Announced

There will be a South Plainfield Charity Softball Tournament to benefit Gary Muccigrossi, a South Plainfield police officer in need of a lung transplant. The softball tournament will take place on Saturday, July 24 at 8 a.m. at the South Plainfield High School ball fields.

The tournament consists of three divisions as follows: men's division—men's slow pitch, double elimination, \$250 entry fee, \$500 prize (first place) and \$250 prize (second place); women's division—women's slow pitch, double elimination, \$200 entry fee, \$200 prize (first place) and charitable—co-ed slow pitch, single elimination, limited homeruns, \$200 entry fee. Deadline for registration is July 10.

Teams can register by contacting Det. Gary Cassio at (908) 226-7663 or Det. Chris Colucci at (908) 226-7662. You may also call the PAL on Maple Ave. at (908) 226-7714.

All other donations will be greatly appreciated to help defer all lab fees and medical costs. The rain date is July 25.

# Dining Out!

No Time to Cook? Enjoy one of these local restaurants everyday.

**Ciccio's Pizza**  
134 Maple Ave., South Plainfield  
(Across From Firehouse)  
Open 7 Days  
**BYOB (908) 753-4060**  
Phone Ahead For Fast Pick Up  
Mon. & Thurs. 11am to 10pm  
Fri&Sat 11am-11pm • Sunday 12pm-10pm

**SUNDAY SPECIAL**  
2 medium pies  
**\$10.95**  
Serving South Plainfield Since 1984  
**FRIED ZEP'S FRI & SAT**

**STEAKS • SUBS • DINNER**

**NOW OPEN !!!**  
**SAM'S**  
grill & bar  
Try our grilled dishes marinated and cooked to tender perfection  
Feel and taste the difference!

GOLDEN ACRES SHOPPING CENTER  
3600A PARK AVE. SOUTH PLAINFIELD, NJ 07080  
Business Hours: Monday to Friday 10 AM to 9 PM  
Saturday 10 AM to 10 PM Sunday 10 AM to 8 PM  
TEL (908) 756-9191 FAX 756-7929

**METRO HUT**  
**Cheesesteaks & More**  
OPEN MONDAY TO SATURDAY  
6:30 am-3:00 pm  
**10% Off with this ad**  
409 Hamilton Blvd. • S. Plainfield  
(908) 222-9595  
Catering Available~We Deliver

**Come in today & try a freshly made panini sandwich!**

To advertise in Dining Out! choose from a one column (\$180) or two column (\$360) ad to run for 10 weeks.

We will design a custom ad for your business and publish a one-time article with photo featuring your business.

To sign up for Dining Out! call 908-668-0010.

**Find Your Way.**

Follow the ups and downs of the borough in the Observer, an independent newspaper for South Plainfield. Send check or money order for \$25/one year (out-of-town-\$30) to: South Plainfield Observer, 1110 Hamilton Blvd., Suite 1B, South Plainfield, NJ 07080.

☒ **Yes, send me home delivery of the Observer.**

NAME \_\_\_\_\_  
ADDRESS \_\_\_\_\_  
CITY, STATE, ZIP \_\_\_\_\_ PHONE \_\_\_\_\_  
CREDIT CARD # (MC/VISA) \_\_\_\_\_ EXP. DATE \_\_\_\_\_

**\*\*\* We now accept VISA and Mastercard \*\*\***  
**Questions? Call 908-668-0010**



## Obituaries

### Anna Stefko (Bayachek), 86

Anna Stefko (Bayachek) died on Wednesday, May 19 at her home in Bayville.

Born and raised in Pennsylvania, Anna had lived in New Brunswick and South Plainfield before moving to the Shore area in 1994, finally settling in Bayville in 2001.

She was employed as an assembly line worker by Revlon for 25 years. Anna is a former member of Sacred Heart RC Church and a life member of the Polish National Home. She loved to play bingo, crochet and enjoyed her many trips to Atlantic City.

She is predeceased by her husband, John, who died in 1992; a grandson, Angelo, Jr., who died in 1988; two sisters, Mary and Sophie Schlactun and by a brother, Nicholas Bayachek.

Surviving are two daughters, Priscilla and her husband, Angelo, Sr. of Bayville and Beverly of Florida and six grandchildren, Dina Gangemi, Lisa Korley, John and Mark Gangemi, Christine Houle and Richard Beaney. Also surviving are six great grandchildren.

Funeral services were held at the McCriskin Home For Funerals.

### Frank (Bokar) Pornovetz, 83

Frank (Bokar) Pornovetz died on Wednesday, May 19 at the Monmouth Medical Center in Long Branch.

Frank was born in South Plainfield and was a life long resident.

He was a supervisor in the printed circuit division of Lockheed Electronics Corporation in Watchung for 30 years, before retiring in 1982.

Frank served his country during WWII in the U.S. Army as a platoon sergeant in the 95<sup>th</sup> Infantry Division, Company B. He participated in the D-Day invasion of France and was awarded two Bronze Stars for heroic action in Germany. He was a member of the VFW Memorial Post #6763 and a life member of the VFW of the United States.

He was a member of the South Plainfield Senior Citizens.

Frank was a great sports fan and had a great love for golf. He was a caddy at the Plainfield Country Club for many years.

He was predeceased by his beloved wife, Rose Pijak Pornovetz; a daughter, Roseanne Pornovetz and two brothers, Michael and Alex Pornovetz.

He is survived by a daughter, Joyce and her husband, Steven C. Felton of Oakhurst; three brothers, James, Charles and George Pornovetz, all of South Plainfield; two sisters, Mary Stafford of South Amboy and Ann Deering of South Plainfield and three children, Clifford, Eric and Victoria Felton.

Funeral services were held at the James W. Conroy Funeral Home.

### Frank J. Jankoski, Sr., 83

Frank J. Jankoski, Sr., died on Sunday morning, May 23 at Care One at The Highlands in Edison.

Born in Staten Island, Frank was raised in South Plainfield where he resided for 75 years.

Any Army Veteran of World War II, Frank was employed as a butcher with A&P for over 30 years. He was a member of the South Plainfield Polish National Home and a member of the South Plainfield Knights of Columbus Council #6203, where he served as past treasurer.

To subscribe, visit [www.sponserver.com](http://www.sponserver.com)

A communicant of Our Lady of Czestochowa RC Church, he was a former usher and lecturer and a former member of the church's Holy Name Society, where he served as past treasurer. Frank was also an avid gardener.

Surviving are his wife, Jennie (Bencivenga) of 56 years; two sons and their spouses, Frank Jr. and Nancy of Phillipsburg and Vincent and Elizabeth of Silver Spring, Md.; three sisters, Jennie Daly of South Plainfield, Lillian Jakoski of Bridgewater and Helen D'Amico of Piscataway and two brothers, Charles and his wife, Angelina of South Plainfield and Louis and his wife, Josephine of Piscataway. Also surviving are six grandchildren.

Funeral services were held at the McCriskin Home For Funerals.

In lieu of flowers, donations in his memory may be made to Our lady of Czestochowa RC Church, 120 Kosciusko Ave., South Plainfield, NJ 07080.

### Gisela (Arns) Thiel, 67

Gisela (Arns) Thiel died on Sunday, May 23 in her home.

Born in Germany, she resided in

Union before moving to South Plainfield 41 years ago.

Gisela was employed as the cafeteria manager for Union Catholic High School of Scotch Plains for 27 years before retiring in 1999.

She was a member of St. Stephen's Lutheran Church in South Plainfield, where she was also a member of the church's Women's Circle. She was an avid crotchetier and enjoyed making a variety of afghans for friends and church functions. Gisela was loved and cherished by everyone, especially her grandchildren, who commonly called her "Oma."

Her husband, Ferdinand Thiel, died in 1999.

Surviving are three daughters and sons-in-law, Christa and Henry Reincke of South Plainfield, Barbara and Michael Ustupski of Rockaway Twp. and Linda Thiel of Piscataway; two brothers, Friedel and Gunther Arns of Germany and four grandchildren, Emily, Sara, Madison and Eric.

Funeral services were held at the McCriskin Home Funerals.

Donations in her memory may be made to St. Stephen's Lutheran Church.



(908) 561-8000

**McCriskin**

## HOME FOR FUNERALS

2425 PLAINFIELD AVENUE  
South Plainfield, NJ 07080  
FAX (908) 561-6744

RICHARD W. MCCRISKIN, Pres., Mgr.  
NJ License No.3147

## IT IS FAR EASIER FOR YOUR FAMILY IF YOU PLAN AHEAD

*Hillside Cemetery  
Scotch Plains*

Visit Our New Cremorial Gardens

An Area Featuring Bronze Cremorial Niches,  
Cremorial Benches, and In-Ground Burial

**908.756.1729**

Non-Profit, Non-Sectarian  
[www.hillsidecemetery.com](http://www.hillsidecemetery.com)

# Business & Professional Services

## AUTOBODY

### SULLIVAN'S AUTO BODY

BodyShop Lic. #02313A

Hours  
Mon-Fri  
8am-5pm

2210 Hamilton Blvd.  
South Plainfield  
New Jersey 07080

**908-757-5100**  
Fax: 908-757-3105



## AUTO REPAIR/MAINTENANCE

### C&R Auto

Mon-Fri 8-5  
Bill & Tom

#### Complete Foreign & Domestic

Auto & Truck Repair • Tune Ups  
Oil Changes • Shocks & Suspension  
Air Conditioning • Exhaust Systems  
Brakes & Front End

235 Hamilton Blvd. South Plainfield

**908-754-8313**  
Fleet Service



## CARPET/FLOORING

### Sam the Carpet Man MY WAY CARPET

ALL TYPES OF FLOORING

119 Hamilton Blvd. South Plainfield

CALL FOR FREE  
ESTIMATE



**(908) 757-3470**

## COMPUTERS

Concerned About Computer  
Virus Protection? Home Security?

For advice and installation,  
call Stan Wilkinson at

### ST Computers

908-769-0709

- New Computers/Upgrades
- Hardware/Software Installations
- In Home Service
- Some Used Computers Available

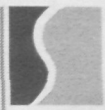
Cell: 732-423-3504

Email: [stcomputers@comcast.net](mailto:stcomputers@comcast.net)

## FITNESS CENTERS

### SLIM AND TONE SOUTH PLAINFIELD

30 Minute Workout for Women



\$39 Monthly with  
No Initiation Fee!  
Open all day

SLIM  
AND  
TONE

30-Minute Workout  
for Women

2601 Hamilton Blvd.  
(between Home Depot  
& Durham Ave.)

**(908) 769-0009**

## FURNITURE REPAIRS

### FURNITURE MEDIC

"the prescription for damaged furniture"

#### Precision Furniture Repairs On-Site

Scratches • Gouges • Pet Damage  
Water Marks • Burns  
Structural Repairs • Broken Joints  
Antique Restoration  
Kitchen Cabinets Refinished  
And MUCH MORE!

**(908) 755-8440**

## LANDSCAPING

### Silver Creek Landscaping

SOUTH PLAINFIELD

#### COMPLETE LAWN MAINTENANCE

- LANDSCAPE PLANTINGS
- SHRUB & TREE PRUNING
- HYDRO SEEDING & SOD
- MULCH / STONE / TOPSOIL
- RETAINING WALLS
- BRICK PAVERS - PATIOS & WALKS
- RESIDENTIAL & COMMERCIAL
- FREE ESTIMATES -

**908-756-7272**

### Lalaria Landscaping SPRING CLEANUP

Leslie Chambers

Telephone: (908) 917-1668

Fax: (908) 757-5175

- Fully Insured •
- Affordable and Reliable! •

Lawn Maintenance

## MASONRY

### Luiqi BOTTONNE MASONRY

ALL TYPES OF MASONRY

CALL FOR FREE ESTIMATE

**732-558-4754**

- Steps/Porches
- Sidewalks
- Brickwork
- Brickpavers
- Patios
- Belgian Block Curbing
- Foundations
- Driveways
- French drains
- Chimneys

## PEST CONTROL

### Pest Control Repair Services

Residential • Commercial

- Inspections
- Monitoring
- Baiting - Trapping
- Damage Repair
- Rodent Proofing Work

(908) 755-3669  
Victor Troiano

Specializing in Rodent Control

## PLUMBER



#### Professional Plumbing & Heating Inc.

(908) 561-1941

South Plainfield, NJ

**FRANK MCCARTHY**

License #8741

## PAVING/MASONRY

### MARK L. DiFRANCESCO

#### PAVING • MASONRY

Driveways • Parking Lots  
Steps • Walkways • Patios  
Pavers • Concrete  
Drainage • Water Proofing

3RD GENERATION

**908-668-8434**

## REAL ESTATE



### Prudential

Rose REALTORS®

Rose Marie Pelton

REALTOR-ASSOCIATE

South Plainfield Resident

For Over 39 Years

908-753-4450 X302

Toll Free 800 370-2424

Fax 908-753-0136

[RosePelton@att.net](mailto:RosePelton@att.net)



Rose Marie Pelton

Prudential Rose REALTORS®

659 Mountain Boulevard, Watchung, NJ 07069



# Classifieds

## HELP WANTED

**DUMP TRAILER DRIVER**—Benefits after 6 months. Pay is negotiable. CDL required. Call (908) 668-0600.

**HEAVY/CONSTRUCTION EQUIPMENT REPAIR PERSON**—Need motivated person w/basic repair & maintenance exp. with heavy equip. & engines. Will be supervised & trained. Pay will increase w/ability to learn, complete varied tasks & become more self-sufficient, etc. Benefits after 6 mos. Pay is negotiable. Call (908) 668-0600.

**DRIVER—ECONOLINE VAN**—Knowledge of Bayonne area and NYC a plus. \$9/hour to start. Call Vince at (908) 822-9988.

**DRIVER'S HELPER—TO ASSIST** driver in making deliveries in the NYC area. \$8/hour to start. Call Vince at (908) 822-9988.

**IMMEDIATE OPENING FOR FULL** Charge Bookkeeper. Must have good working knowledge of A/R, A/P, G/L and collections. Candidate must be organized and have the ability to work as a team member. Please fax resume with salary requirements to attention Chris at (908) 668-9748.

**PART TIME OFFICE HELP NEEDED** for local funeral home. Hour: Mon-Fri 3-5 p.m. and Saturdays 8:30 a.m.-12:30 p.m. Must be reliable, have knowledge of Word Perfect and be able to handle multiple tasks. Call (908) 561-8000.

**SUMMER DAY CARE—RESPONSIBLE** person, non-smoker with car, for my 11-year-old daughter. Will pay for all activities. Great for high school student. Call Cynthia (908) 447-6980.

## FOR SALE

**1999 Coleman Pop-Up Camper**, exc condition, \$1,800, must sell, call M-Th between 6 & 8 p.m. (908) 561-4238.

## HOME FURNISHINGS FOR SALE

**7 PC. BEDROOM SET—BED, CHEST** dresser & mirror and night stand. New in box. Value \$2600. Sell \$975. (732) 259-6690.

**MATTRESS SET, FULL, NEW IN** plastic. \$100. (732) 259-6690.

**MATTRESS AND BOX QUEEN DOU-**ble pillow top. New in bags \$149. Can deliver. (732) 259-6690.

## HOME FURNISHINGS FOR SALE

**5 PC. BDR SET—NEW IN BOX. LIST** \$1299. Sacrifice \$565. (732) 259-6690.

**BED—KING MATTRESS SET, NEW** in plastic. Sell \$225. (732) 259-6690.

**DINING ROOM SET—CHERRY W/1** pc. hutch, table and chairs, new in boxes. Sell \$825. Can deliver. (732) 259-6690.

## SUMMER CHILDCARE

**SUMMER CHILD CARE**—Go to work this summer with piece of mind knowing your child is in excellent hands. Experienced mom will watch your child in her South Plainfield home. Flexible drop off and pick up times available. Reasonable rates. Call Diane at (908) 754-8294.

## DAY CARE IN MY HOME

**LOVING MOTHER OF 2 WILL CARE** for your child or children in her SP home. Call Rita (908) 755-1312.

## FOUND

**VERY FRIENDLY BLACK LAB** near Sacred Heart Parish Center wearing red collar. Contact Humane Society on Rock Ave.

## REAL ESTATE FOR SALE



**SOMERSET—MOVE RIGHT INTO** this well-kept 4 bedroom, 2½ bath Levitt colonial on a .42-acre landscaped corner lot. Fireplace in living room, solid vinyl windows, new hot water heater w/10 year warranty & attic fan, professionally maintained yard, brick patio, shed. Family room, eat-in-kitchen, dining room, C/A, 2-car garage, floored attic. Asking \$374,900. Principals only. Call (732) 545-3132.

**EXPANDED RANCH—5 BEDROOMS,** 2½ baths. For information, go to Foxtons.com, see #C6456.

*Deadline to submit  
classified advertising  
is Monday, 5 p.m.  
Call 908-668-0010*

**GREAT LAND & SPECTACULAR** OCEANFRONT on Virginia's Eastern Shore. 45 spectacular 3+ acre lots on the mainland overlooking Chincoteague and Assateague Islands. Private paved roads, underground utilities, on-site caretaker within the 475 acre gated estate. Sun, sail, swim, fish, clam, and play on water by day; dine at nearby quaint village restaurants at night. 30 miles south of Ocean City and minutes from the National Seashore. Priced from \$130's with bank fin. as low as 3.9%. Call (757) 854-3900 or email amy@corbinhall.com.

## BUSINESS PARTNER WANTED

**ESTABLISHED BEAUTY SHOP** looking for experienced hairdresser as a business partner in South Plainfield. Call (908) 561-2226.

**Advertise Your Garage  
Sale for \$15.  
Call 908-668-0010.**

# Business & Professional Services

To advertise your business here, call 908-668-0010.

## CHIROPRACTOR

### ARE YOU IN PAIN?

Or just looking for a way to maintain overall wellness? We can help!! Give us a call!!

**Advanced Chiropractic and Wellness Center**

904 Oak Tree Ave., Suite O,

South Plainfield, NJ 07080

**908-561-1777**

**DR. NORAYR OZBALIK**

Open six days a week!! Flexible office hours!!  
Consultations are always FREE!!  
We Accept Many Major Health Insurance Plans!!

## CONTRACTORS

### BUILDER & GENERAL CONTRACTOR

NJ DCA LIC #019771

Since 1981

**Lordina Builders**

**908-753-3850**

**ADDITIONS • KITCHENS**

**BATHROOMS**

**Office Renovations**

**FREE ESTIMATES**



FREE ESTIMATES

**AFFORDABLE MAINTENANCE**

Kitchens  
Bathrooms  
Ceramic Tile  
Masonry  
Carpentry

REMODELING,  
RENOVATIONS  
(908)  
**246-1837**

**ALL HOME REPAIRS**

NJ STATE CERTIFICATION

## DRIVEWAYS

### WELL DONE DRIVEWAYS

30% Off  
Spring  
Special

"Paving the  
Way for the  
Future"



Free Estimates

**908-379-4405**

Cell: (732) 939-9033

**Senior Discounts Available**

## DRIVEWAY SEALING



**KleenSeal**  
DRIVEWAY SEALING  
**732-321-3699**

## HEATING & AIR CONDITIONING



Service your  
Air Conditioning/  
Heating Systems  
ahead by calling  
**ALL CLEAR**

**New Installation  
and Repairs  
754-5433**

## JEWELERS

**CINDY MICHAELS**

**Jewelers & Gemologists**

176 Front Street

South Plainfield

**908-769-4264**

EDWARD J. COLUCCI GEMOLOGIST

*Fine Jewelry & Expert Repairs*

## CONTRACTORS

Hire a handyman  
to conquer that  
"Honey Do" list.

Over 20  
Years  
Experience

**J.D.L.**

TOM  
CHEPULIS

**IMPROVEMENTS**

Specializing in small jobs for the home & office.

RELIABLE, FULLY INSURED

**RENOVATIONS • REMODELING**

**REPAIRING**

Also specializing in Gas Grill installations

**908-754-4689**

## LANDSCAPING

South Plainfield **J & J** Senior Discounts

**Landscaping**

• Lawn Maintenance

• Yard Clean Ups

Mulching • Spring Clean Ups

**908-757-5098**

Ask for Joe De Biase

## MASONRY

FREE ESTIMATES

**ROME MASONRY**

Cultured Stone,  
Brick Pavers,  
Sidewalks, Steps,  
Patios, Etc.

Call (848) 248-3023  
or (732) 752-5549

## MORTGAGES

FAST APPROVALS...

GREAT RATES...

PERSONALIZED SERVICE...

APPROVAL

Colony Mortgage

Mike Dixon,  
President

Licensed Mortgage Broker - NJ Dept. of Banking

**908-822-0090**

2325 Plainfield Ave. Suite 2E

South Plainfield, NJ

Se Habla Espanol

1st 2nd

1st 2nd

Mortgage Co.

of N.J. Inc.

Nationwide since 1982

Low Rates, Low Closing Cost,

Fast Approval

Residential and Commercial Loans,

Call for Free Loan Review

**(908) 756-0200**

MIDDLESEX COUNTY BRANCH:

300 Maple Ave. • South Plainfield, NJ 07080

## MULCH/TOP SOIL/STONE

Call

**KLK Trucking for:**

Top Soil, Mulch, Sand, Infield Mix,

Decorative & Crushed Stone

Sanding • Salting • Snowplowing

Pick up or Deliv., Mon. thru Sat

**908-757-4434**

265 Ryan Street

South Plainfield

## PAINTING/HOME IMPROVEMENT



Residential & Commercial

**BULLSEYE**

Services

PAINTING, POWERWASHING &

HOME IMPROVEMENT SERVICES

20 Years Experience

Fast & Reliable

Low prices, free quotes, fully insured

**CALL TODAY**

**908-757-6640**

## REAL ESTATE

South Plainfield  
resident for over  
30 years

Business:

(908) 755-5300 x 416

Fax:

(908) 755-5052

Email: diollob@morettiirealty.com

Web site: www.morettiirealty.com

**Century 21**

Morietti Realty

225 Maple Ave., South Plainfield, NJ 07080



Bertrand (Bert) DiLollo  
Realtor-Associate

**Century 21**  
Main Street Realty Inc.



**Robert Publik**  
Realtor-Associate

Business:

(732) 549-9000 x 358

Evenings:

(908) 755-2709

E-Mail: bobp@comcast.net

OFFICES IN N. EDISON, WOODBRIDGE, COLONIA

2077 Oak Tree Road, Edison, NJ 08820

## ROOFING

**J.T. PENYAK**  
**ROOFING CO.**

COMMERCIAL INDUSTRIAL

RESIDENTIAL

**908-753-4222**

FAX 908-753-4763

124 CAMDEN AVE.

SO. PLAINFIELD, NJ 07080

## SALON

Let us put you in a  
new trendy look...  
Specializing in Color, Foils,  
Haircuts, Wedding Parties

**South Side Salon**

Featuring:

Facials, Massage, Waxing & Nails

2201 South Clinton Ave.

South Plainfield

**908-753-5115**

## SPIRITS

1645 Park Avenue,  
South Plainfield  
**791-9463**  
**Sal's Spirit Shoppe**

Cavit (1.5 liter)

Pinot Grigio ..... **\$9.99** Mon.-Sat.

9am-1am

Estate Cellars

Sundays

White Zinfandel

(750ml) ..... **\$3.49** 1am-7pm

(1.5 liter) ..... **\$5.49**

Bring in this ad for 10% off on wines



## IN YOUR OPINION

## SPHS Golf Team Welcomes First Lady Golfer

Continued from page 2

this news item), Pabst stated in voting no that "this site is in the middle of the industrial zone. All the surrounding area is used for industrial purposes. There is a Duke Energy pipeline on the property. The roads can't handle an additional 484 cars."

The entire project would contain, in addition to the senior housing building and clubhouse, 11 more buildings comprising many units and total parking spaces for 1,024 autos. Besides an obvious heavy burden on the traffic congestion in this neighborhood and elsewhere in the town which is already feeling the unusually heavy housing construction effects during the past several years, seniors would find many inconveniences at this site, all detailed.

At the Planning Board meeting with mayor and a councilman present, mention was made that senior housing was

### Pedestrian Struck While Walking On Sidewalk

A pedestrian walking westbound on Hogan Dr. was struck by a 1999 Chevy Suburban operated by John Soos, age 65 of Skillman, as he backed out of a residence. The pedestrian, Lal Kumari, age 56 of South Plainfield, suffered a serious head injury and was transported and admitted to Robert Wood Johnson University Hospital in New Brunswick. The South Plainfield Rescue Squad and paramedics from Mercy 6 treated Kumari at the scene.

Kumari was walking on the sidewalk when Soos backed out of a driveway and struck her. Her injuries would have been more severe had it not been for two witnesses who alerted Soos to stop his vehicle immediately.

Soos was issued a warrant for failing to yield to a pedestrian when entering a roadway from a private driveway. Soos was not injured in the crash.

### Veterans Visit War Memorial

(Continued from page 1)

there and were able to be able to make the eight hour roundtrip.

The memorial—located on the National Mall between the Lincoln Memorial and the Washington Monument—opened to the public April 29 and will be dedicated May 29 during a ceremony with President Bush.

Approved by Congress in 1993 and with construction beginning in 2001, it is the first national memorial honoring the 16 million Americans who served in the armed forces during World War II, the more than 400,000 who died, including nearly 12,000 New Jersey residents and the millions who supported the war effort from home.

The memorial was built with mostly monies donated by individuals and corporations. The federal government provided about \$1.6 million for the construction. It covers six acres, has a column from each state and territories of the time. Hawaii and Alaska were not states at the time.

There is a wall with 4,000 gold stars, each one representing 100 lives, commemorating the 400,000 Americans that gave their lives in the war.

Look up National Parks Service on the internet for more information at [www.nps.gov/nac](http://www.nps.gov/nac).

needed and that another site proposal where the existing senior building is present was "overloaded," particularly due to dropping off and picking up students at Riley School. I spoke with the principal of Riley and was advised that, in his opinion, there was no "overloading" now or even if another senior building was erected next to the one present!

I urge all seniors in South Plainfield to stand with us and make it clear to the mayor and his council that we are strongly opposed to Tingley and desire that senior building number two be constructed on Morris Ave., or its equal, closer to the center of the town. The council would do a great disservice to rezone this site in question before the entire townspeople have an opportunity to voice their wishes, since they will be the ones to live in the building and should be satisfied with its location.

When a vote was taken at the Senior Center, seniors voted unanimously against Tingley and for Morris Ave. or equal. Any questions you may have will be answered by contacting the town's Senior Center.

**WALTER J. PASACRITA, CHAIRMAN, SENIOR MEN'S FORUM**



SPHS Golf Coach Mike Kavka and Freshman Ashleigh Gaspari at the West 9.

By Jane Dornick

Since its inception in 1957, the South Plainfield High School Golf Team has had only male members until this year. Ashleigh Gaspari, a 15 year-old ninth grader, comes to the team this year with many years of golfing experience under her belt.

Ashleigh's grandmother, South Plainfield resident Catherine Johnson, began taking Ashleigh and her brother Frank, out golfing at the West 9 Golf Course at the age of eight. She also played with the recreation summer golf program on the same course. Her brother was a starter on the SPHS golf team for four years and Ashleigh hopes to continue the legacy. She is an all around athlete, who plays varsity soccer and freshman basketball. Ashleigh also competed in the recent GMC Girls golf Tournament at Bunkerhill in Franklin Twsp.

SPHS golf coach Mike Kavka says, "I wish that more girls would express an interest so we could have a girl's golf team." He also commented that boys and girls playing together on a team helps to develop a healthy relationship. Perhaps Ashleigh's courage to join the boy's team will inspire other high school girls to make that step.

**INTRODUCING A NEW WAY TO SAVE IN SOUTH PLAINFIELD**

# GRAND OPENING!



WHERE SMART SHOPPERS SAVE!

USE OUR EASY LAY-A-WAY PLAN!

## SAVE UP TO 80% EVERY DAY!

• NEW INVENTORY EVERY DAY!

• THOUSANDS OF ITEMS AT UP TO 80% OFF!

• FACTORY OVERRUNS & CLOSEOUT MERCHANDISE!

• CLOTHING, LINENS, HOUSEWARES, HOME FURNISHINGS & MORE!

**FAMOUS MAKER CLEARANCE!**

FABULOUS SAVINGS ON SELECT ITEMS!

**\$3.99**

**44Pc. COOKWARE SET**

Sauce Pans, Frying Pans, Storage Containers & Lids  
EVERYTHING YOU NEED TO GET STARTED!

**\$12.49**

**UNISEX MEDICAL SCRUBS**

Reversible Tops Or Bottoms  
Asst. Sizes & Colors

**\$5 ea.**

**TRAVEL PILLOW**

Ideal For Car Or Camper

**\$2.59**

**EMPIRE INTIMATES LINGERIE**

LARGE Selection Of Teddies, Bras & Panties!

**SAVE!**

**LADIES' DENIM SEQUINED JACKET**

**\$12.49**

**MISSES' WRAP ROBE**

**\$7.49**

Assorted Sizes

**IN THE FORMER BRADLEES LOCATION**

Follow the ups and downs of life in South Plainfield....

Subscribe to the Observer!

Call 908-668-0010.



**GOLDEN ACRES SHOPPING CENTER • SOUTH PLAINFIELD • M-S 10-9 SUNDAY 11-6**

Pictures for illustration only. No rain checks. Limited quantities on some items.