



South Plainfield Observer

VOL. 8, NO. 30

50 CENTS

MARCH 19, 2004



Police investigate a two-vehicle accident on Woodland Ave. during Tuesday's snowy conditions. Any witnesses are asked to call South Plainfield Police Traffic Safety Unit at (908) 226-7678.

Addressing School Traffic Issues Could Cost \$Ms

Soccer, ball fields, playgrounds may be casualties

Fred Mullen, a representative from Shoor DePalma, gave a presentation to the Board of Education last week on an extensive traffic study they completed at all of the schools. They also gave recommendations on how to combat the dangerous traffic conditions which take place daily when parents drop-off and pick-up their children.

If the Board chooses follow the safety related recommendations from DePalma, the cost will be \$1.76M, doing all of the recommendations would cost just over \$3.5M. Last year the board set aside \$1M in their budget to improve the traffic flow around the schools. The Board will decide which schools have the biggest safety concerns and begin with

them. They will also be looking into the possibility of receiving 40 percent funding from the state.

Mullen said his group met with principals and teachers, as well as focus groups, Police Chief Merkler and Sgt. Kevin Murtaugh. They also observed traffic patterns at each school several times and compiled a chart of costs for each school containing plans grouped according to what should be done immediately and what can be done at a later date.

Board member Michael English, who also is director of recreation, noted that several recreation areas used now for recreation sports, such soccer and baseball would be lost to create new parking lots. He asked to meet

(Continued on page 14)

Driver Hit Head On, Summons Issued

During Tuesday's snow storm a head-on collision occurred on Woodland Ave. Julio Carrillo-Salc Jr. of North Plainfield, traveling north on Woodland Ave., crossed over the lane and struck Joan Wagner of Edison head on, closing the road for about an hour.

Wagner was transported to Robert Wood Johnson Hospital where she is listed in stable guarded condition.

Carrillo-Salc was taken to Muhlenberg Hospital, treated and released. He was issued a Careless Driving summons for unsafe speed for the roadway condition.

Conroy Wins State Championship!

By Bob Hunter

This past Sunday, in front of over six thousand fans at Atlantic City's famed Boardwalk Hall, South Plainfield sophomore Jimmy Conroy became the town's fifth NJSIAA state wrestling champion with a thrilling 3-1 overtime victory over John Trumbetti of St. Joseph's Montvale in the 103-pound final. The festivities prior to the beginning of the state finals saw Conroy, the top seed in the tournament, leading the delegation of the eight place winners from his weight class in a Parade of

Champions around the arena with an expression of determination towards the match at hand. Conroy and Trumbetti were not strangers, they have had a number of battles with each other prior to high school but never with the stakes, or pressure, this high. Twenty-nine years ago, Conroy's father Jim faced the same anxiety and pressure of wrestling in the state finals, as did his head coach, Kevin McCann in 1991. Despite these pressures, Conroy exuded an appearance of calm and complete focus. This was the final stage in a memorable tournament for Conroy that began two nights earlier.

Conroy's mission began in dominating fashion on Friday night as he pinned Rob Cappola of Toms River East High School at 1:46 in the pre-quarterfinal round to advance to the quarterfinal round. The next morning Conroy took on Gary Heckler of Highland Regional by going on the attack early to score a quick takedown and back points en route to an impressive 7-0 victory. In the semifinal round later that afternoon, Conroy would have his third encounter this season with Matt Pagan of Bishop Ahr.



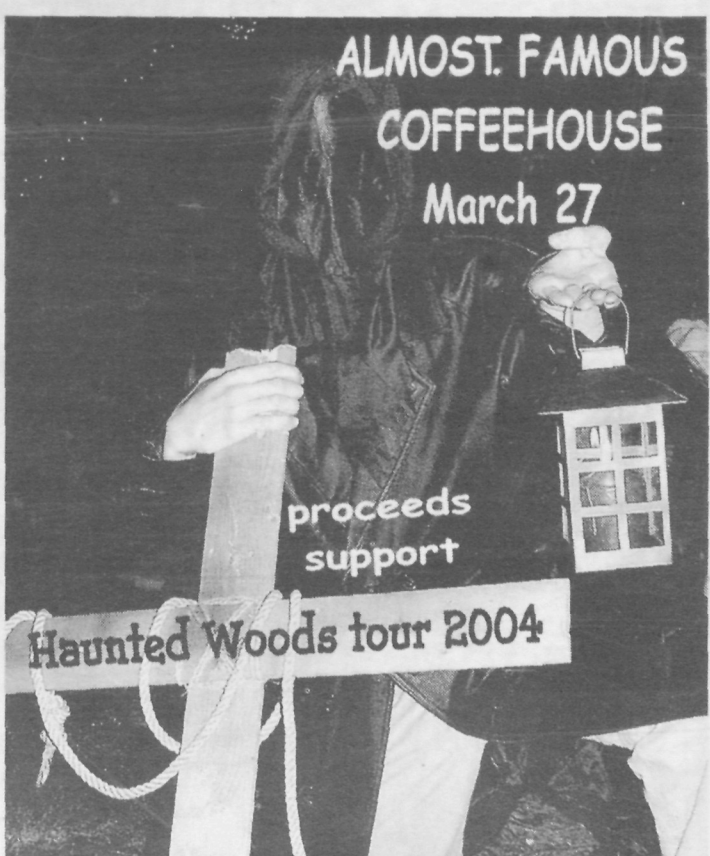
Jimmy Conroy secures his overtime victory against John Trumbetti of St. Joseph-Montvale at the 103-pound state final on Sunday.

Conroy, victorious in his previous two matches against Pagan earlier in the year, dominated from the beginning and secured an 8-0 major decision to secure a place in the championship round on Sunday afternoon.

On Sunday afternoon, as the prior festivities ended and the crowd roared

with anticipation, Conroy and Trumbetti faced off in what would become a match for the ages. The first period saw the wrestlers feeling each other out, trading shots for most of the first two minutes. At the beginning of the second period, Conroy won

(Continued on page 8)



Almost Famous Players to hold fundraiser to sponsor Haunted Woods Tour for 2004. See page 10 for details.

BOA Says No to Indian Temple

Last Thursday, the Board of Ad-justment denied the application from the I.S.S.O. (International Swaminarayan Satsang Organization) to open a temple in South Plainfield on Fleet St., located just off Universal Ave. in Edison. Most of the traffic from the church would have to use the streets in Edison to reach the proposed site.

After hearing comments from the public for more than an hour, Board Chairman Bill Thomas read a written statement listing his reasons for denying the application. The board then

voted unanimously with Thomas to deny the application without any other members commenting.

One of the reasons Thomas gave as a reason to deny the application was that the church would be located on a dead end road and those going to and leaving the temple would be using the narrow residential streets, which would adversely affect the small neighborhood atmosphere. He said a church should be on a main road, not a neighborhood street and have more than one entrance and exit.

Thomas noted that when he drove down Fleet St., he observed that cars were parked on both sides of the street and there was barely enough room for one car to get by.

Residents who spoke at the meeting followed the same theme, saying their streets were not wide enough to handle the 60 or more cars passing through their neighborhood and forming a long line to make a right or left onto Park Ave.

Applicant Dhruval Sheh indicated he will appeal the board's decision.

Mark your calendars

Log on to
southplainfieldnj.com
for the latest
meeting agenda

council meetings

Meets twice a month on the first and third Monday.
Borough Hall Council Chambers • Questions? 908-226-7605

	Agenda Meeting	Public Meeting
Monday, April 5	7:00 p.m.	8:00 p.m.
Monday, April 19	7:00 p.m.	8:00 p.m.
Tuesday, May 4	7:00 p.m.	8:00 p.m.
Monday, May 17	7:00 p.m.	8:00 p.m.
Monday, June 7	7:00 p.m.	8:00 p.m.

All meetings of the Governing Body are held in accordance with New Jersey Open Public Meetings Act (NJSA 10:4-6 et seq) in the Council Chambers at 2480 Plainfield Avenue.

planning board

Meets second and fourth Tuesday of the month
Borough Hall Council Chambers, 7 p.m. • Questions? 908-226-7641
March 23, April 6 and 20, May 11 and 25, June 8 and 22, July 6 and 20, Aug. 10 and 24, Sept. 21, Oct. 12 and 26, Nov. 16 and 30 and Dec. 14 and 28.

zoning board of adjustment

Meets second and fourth Thursday of the month
Borough Hall Council Chambers, 8 p.m. • Questions? 908-226-7641
March 25, April 8 and 22, May 13 and 27, June 10 and 24, July 8 & 22, Aug. 12 and 26, Sept. 9 and 23, Oct. 14 and 28, Nov. 4 and 18 and Dec. 2 and 16.

board of education meetings

Roosevelt Administration Gymnasium on Jackson Ave. unless otherwise noted
Committee of the Whole meets Tuesdays at 7 p.m.: April 6.
Regular Board Meeting held Tuesdays at 8 p.m.: April 13.

taxpayers advisory group

The Taxpayers Advisory Group (TAG) meets the fourth Tuesday of every month at Borough Hall, 2480 Plainfield Ave. at 7 p.m. Questions? 908-769-0786.

site plan sub-committee

Meets once a month on the third Tuesday of the month, 8 p.m.
April 20, May 18, June 15, July 20, Aug. 17, Sept. 21, Oct. 19, Nov. 16 and Dec. 21.

recreation commission

Meets once a month on the first Tuesday of the month, except July and August
PAL Building, Maple Ave. 7 p.m. • Questions? 908-226-7716
April 6, May 4, June 1, Aug. 3, Sept. 7, Oct. 5, Nov. 2 and Dec. 7.

environmental commission

Meets once a month (second Wednesday)
Borough Hall Conference Room, 8 p.m. • Questions? 908-226-7621

business advisory group

Meets once a month (first Wednesday)
Borough Hall Council Chambers, 5 p.m. • Questions? 908-757-8100

traffic safety advisory commission

Meets once a month (fourth Wednesday) at 7 p.m.
in the Conference Room, Borough Hall

South Plainfield Observer

The South Plainfield Observer is published every Friday

G&G Graphics, Inc.
1110 Hamilton Blvd. Suite 1B
South Plainfield, NJ 07080
(908) 668-0010 • FAX (908) 668-8819

NANCY GRENNIER
Publisher/Editor

Web page:
www.spobserver.com
For subscriptions, advertising or information, call (908) 668-0010.

The publisher is not responsible for typographical errors.

The South Plainfield Observer (U.S.P.S. 018253) is published weekly, except Thanksgiving week, by G&G Graphics Inc. 1110 Hamilton Blvd. Suite 1B, South Plainfield, NJ 07080-2004. Second class postage paid at South Plainfield, New Jersey 07080-9998. POSTMASTER: Forward change of address orders to G&G Graphics Inc. 1110 Hamilton Blvd. Suite 1B, South Plainfield, NJ 07080-2004. Subscription rates \$25 per year in South Plainfield; \$30 per year out of town. To subscribe: 908-668-0010.

SUBMIT YOUR ARTICLES

We look forward to hearing from all of you and encourage you to send in your stories and photos. The *South Plainfield Observer* is your paper. Please let us know what you would like to see in it.

To get an article published in the South Plainfield Observer:

1. Type (double spaced) the article you wish published.
2. Mail, fax or drop it at: South Plainfield Observer, Editorial Department, 1110 Hamilton Blvd., Suite 1B, South Plainfield, NJ 07080 or drop it in the box at Mohn's Flowers on Plainfield Ave. or at (908) 668-8819 or e-mail us at ggnan@aol.com or ngrennie@ix.netcom.com. Include your name, address, telephone number. You can subscribe or contact us at: spobserver.com.

LETTERS TO THE EDITOR

Letters may be submitted by mail to South Plainfield Observer, Editorial Dept., 1110 Hamilton Blvd. Suite 1B, South Plainfield, NJ 07080, by email: ggnan@aol.com or fax 908-668-8819. Letters should not exceed 400 words. We reserve the right to edit for clarity or length. It is the editor's discretion to limit the number of letters submitted by one individual on the same subject. The opinions expressed in "Letters" do not necessarily reflect the opinion of the *Observer*. All letters must be submitted with name and phone number, for verification.

WAYNE GRENNIER
Associate Publisher

SUSAN KANEPS
Art Director/Associate Editor

PATRICIA ABBOTT
Staff Writer/Photographer

CAROL GRENNIER
Editorial Assistant

TONI MARIE CICCIA
Production Assistant

CHRISANN ZUSHMA
Web Page Design

ROXANNE CORTESE
JANE DORNICK
WILLIAM TUTHILL
Advertising Sales

IN YOUR OPINION

To the Editor,

Last year on a cold winter evening, with a lack of anything special to do, my husband and I decided to go to South Plainfield High School to watch a boys Varsity Basketball game. That one evening was worth the price of admission. We walked away hooked on the style of play of our boys' team, coached by Jeff Lubreski, Mike Allocco and Bob Jones. It was with a sense of excitement that we awaited the opening of the 2003-2004 season. And what a season it was! From the home opener to 27-straight wins, including the GMC championship at Rutgers Athletic Center, to the heartbreaking loss in the State Sectional Finals, we watched this group of young men play with a desire and intensity equal to none.

What impressed me most about this team was the unselfishness they demonstrated on the court. There were no "ball hogs" on this team; one player was always looking to pass the ball to another to make a better play instead of just adding to his stats. These young men were also totally unaffected by their success and excellence. When seeing them in the halls of SPHS and congratulating them on a win or outstanding play in the game before, they were most humble in their responses. What a credit that is to these athletes, their coaches, and their parents!

It was also extremely refreshing to watch a coach play his substitutes in any given game; this doesn't often occur in sports at any level of play. These substitutes put in just as many practice hours as the starters and deserved every opportunity to play in games and contribute to their team's performance. Their enthusiasm during play, as well as the starting five's wholehearted support and cheering from the sidelines as they watched their replacements, was pleasurable and certainly admirable.

As the season progressed, how much fun it was to watch the bleachers fill with more and more fans, including the ever-growing and well-organized student section. How exciting it was to hear the constant chatter of "Were you at the game last night?" "Are you going to the next one?" "Did you see that play?" and lastly, "What time do we have to get on line to make sure we can get a seat at the game?"

As the days go on and time diminishes their disappointment, I hope this group of fine young athletes realize what a sense of excitement and pride they brought to the South Plainfield community, for that is more important than any trophy they would have received.

I wish the graduating seniors good luck in their future endeavors and I look forward to watching the rest of the boys on the court again next year.

KATHY DIMEGLIO

Dear Editor,

I would like to take this opportunity to congratulate the South Plainfield High School boys Varsity Basketball team on a job well done. These young men have brought unity and pride to the town of South Plainfield, as well as the fine coaching staff. The Board of Education and the administrators of South Plainfield High School should be very proud of this team. Not only did these players show athletic excellence on the court, but they displayed true sportsmanship as well. As the mother of a cheerleader, I didn't know much about the sport of basketball, but as time went on, I found myself truly appreciating what these boys were accomplishing. This team played as a team. Every member contributed to this successful season. Watching the team face its first loss of the season last Tuesday was truly heartbreaking. They fought until the very end once again, showing great ath-

Submit Letters to the Editor:

Letters may be submitted to the Observer, 1110 Hamilton Blvd. Suite 1B, South Plainfield, NJ 07080, by email: ggnan@aol.com, or faxed to 908-668-8819. Deadline is Monday, 5 p.m. Letters must be accompanied by a name and telephone number for verification. Limit letters to no more than 400 words. We reserve the right to edit for clarity or length. We reserve the right to limit the number of letters submitted by one individual on the same subject.

leticism and sportsmanship. To those of you who played on this team, let me say this. "Not only are your fellow students proud of you, but the people of this community are proud of you as well. Thank you for letting us be part of your dream."

SINCERELY,
DIANE KUHN

To the Editor,

The Student Council at Roosevelt Elementary School is conducting a clothing drive during the month of March. The clothing will be donated to the Base Camp Children's Cancer Foundation. Donations the Student Council collects will fund programs for families and children living with cancer. Families are sending in the following items: clothing for men, women and children, shoes and stuffed animals, linens, handbags and hats.

The clothing drive runs until the end of March. We would like to thank all of the families that have contributed to this worthy cause; the response so far has been tremendous.

ROOSEVELT STUDENT COUNCIL
MS. FERRARO AND MRS. MOSLEY
STUDENT COUNCIL ADVISORS

To the Editor,

I realize that there have been many comments on the *New York Times* article "If You're Thinking of Living in South Plainfield; A Working Town Coping With Change." Hopefully, you have room for one more community response, I just couldn't help myself.

I downloaded the article from the archives—a skill I am not expected to have according to the comments of the Superintendent of Schools, since I am a long time resident. I have not only gone through the local school system from elementary school to high school,

but chose to actually stay here and send my children through the same public school system.

If there is trouble with the SATs now, maybe a look at the current school administration, as well as mocking the citizens, might shed some light on the problem. I don't recall this being an issue when I left high school in 1963. College was the right thing for me, but college is not for everybody and shouldn't be.

Although academics love to think that a BA or better is an answer to every problem, one should look at the number of college graduates who are losing jobs now due to downsizing and outsourcing. Technology has advanced to such a degree that we no longer need great numbers of the educated to run the country.

There is nothing wrong with diversity of occupation and there is certainly great need for skilled people in trades.

We need people to protect us also. Is there something wrong with a career in the police force or working with the fire department or rescue squad? Where would we be without them? Don't tell us that this is not success!

I have never taken a poll of my neighborhood or my church to check on their educational level. Is it not important to me. Community is important to me. Inclusiveness is important and so is loyalty. That is why I have stayed here. This is home.

I like the people who live here. I like the fireworks on Labor Day. I like the library and the park. People say hello to you while they are walking through the neighborhood. People help you here when you need it.

South Plainfield is not a posturing community. It does not deserve to be patronized by the mayor or the superintendent. Mr. Rosado has only been here a short time and I wish him every success and hope that he may soon have a chance to take his talents to a town more worthy of him.

I like to think that Mr. Gallagher meant to say that we are not pretentious. I hate to think that our own mayor means to sound as if he thinks he is doing the little people a favor by staying on to serve us after all these years.

Maybe he just needs a speechwriter.
SINCERELY,
JANET H TEKLEY

Slim and Tone

30 Minute Workout for Women

* FIRST MONTH FREE!

Improve muscle tone and cardio fitness

- Ideal for ages 13+
- Convenient ALL day hours
M-F 8-7:30 Sat 8-2
- Clean, Private Setting
- Mother/Daughter Special Rates
- Friendly, helpful staff

(908) 769-0009

Staff Certified in CPR

*For new members in the month of March
(with one year EFT or Prepaid membership)
With this AD! Just mention the Observer
when calling or on your first visit.

\$39
Monthly
No Initiation
or Process Fee

Rosemary Holt, PROPRIETOR
Vicky Kiczula, Co-MANAGER
Nancy Pasternak, STAFF MEMBER
Melissa O'Connor, STAFF MEMBER
Amy Leso, STAFF MEMBER

2601 Hamilton Boulevard

(Between Home Depot & Durham Ave. 1 Block from the Car Wash)





Logo winner Allison Whitefleet with her proud mom, Barbara.

Sacred Heart Centennial Anniversary Logo Unveiled

Last month's *Observer* announced the winner of the contest held to choose the logo for the Sacred Heart 100th Anniversary celebration.

Observer Art Director Sue Kaneps has finished transforming Allison Whitefleet's original drawing of the winning logo and has recreated it on the computer so the logo can be used for reproduction on t-shirts, letterheads, posters and publicity for Sacred Heart's 100th anniversary celebration. The logo will soon be seen throughout South Plainfield.



Allison Whitefleet's winning logo was chosen from a group of nine finalists. She will be officially recognized by the members of the 100th Anniversary Committee at a date to be announced.

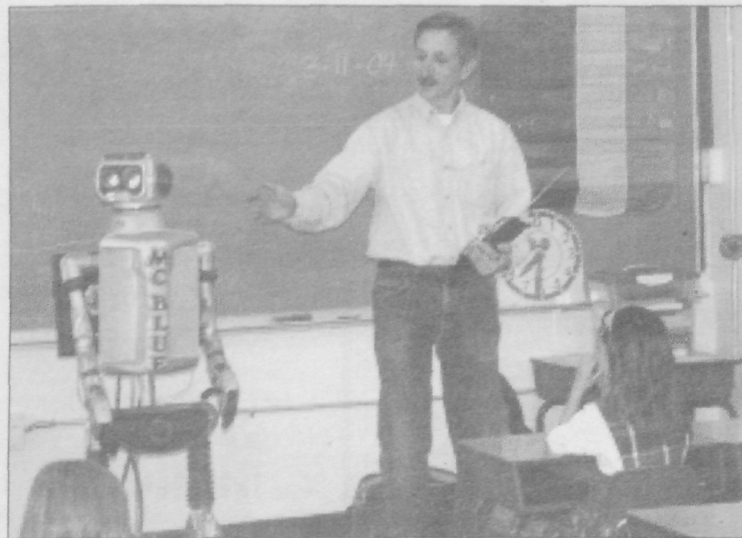
Allison, an eighth grade student at Sacred Heart, will be graduating in June and plans to attend Union Catholic next year. She said she would like to become a TV reporter some day. Allison lives with her mom, Barbara and brother, William, 11, who attends Grant Central.

Looking For Volunteers For Clean-up Week

Have you heard your first robin of the year? Start thinking about spring, by putting Volunteer Litter Cleanup Week on your calendar! The South Plainfield Clean Communities Advisory Board will sponsor a Borough-wide cleanup in mid-April. The main clean-up event will be on Saturday morning, April 17. Volunteers will meet from 9 to 10 a.m. in the Borough Hall parking lot at 2480 Plainfield Avenue to collect equipment and clean-up assignments. We will target roadsides, parks, streams and vacant lots. All volunteers will be invited back to Borough Hall at noon for a free Pizza Pickup Picnic, complete with environmentally friendly door prizes. The Mayor will be on hand to award prizes to the winners of the Design A T-Shirt contest. Residents are welcome to organize a crew, or to come on their own.

The Clean Business Association is also planning to participate in Volunteer Litter Cleanup Week. In his March 9 letter to the membership, President Joe Diegnan invited all CBA members to take this opportunity to spruce up their own properties. Any litter collected can be placed at the curb for the Borough's Road Department to pick up, as long as the business registers ahead of time with the CAB.

Call Alice Tempel, the Clean Communities Coordinator, at (908) 226-7621, or e-mail her at atempel@south-plainfieldnj.com for more information.



MC Blue, a robot, helps to educate students on the benefits of recycling.

MC Blue Talks Recycling

Mrs. Hohner's first grade class at Sacred Heart School had a special guest visit their classroom last week. MC Blue, a robot from the Middlesex County Recycling Program, with the aid of a video from Mr. Rogers, explained what materials are recycled here in Middlesex County.

Through the Mr. Rogers video the children were able to see the recycling process firsthand. They saw what happens to materials after they are picked up from the curb and how they become something new.

MC Blue quizzed the children by naming an object and asking them

whether or not it gets recycled.

The Middlesex County Improvement Authority (MCIA) is dedicated to protecting the environment and promoting good recycling practices in Middlesex County.

As part of their commitment to protect the environment and promote good recycling practices, the MCIA Education Department has prepared several recycling presentations, which their staff members deliver, free of charge, to schools, civic and business organizations, senior citizen clubs and other groups.

Permits, Applications and Forms Available on Website

Residents can now go online to download the necessary information packets, permit applications and forms they will need for home improvements instead of going to the Borough's building department.

Simply log on to the Borough's webpage: southplainfieldnj.com, scroll down to the bottom of the page and click on what form you need. You must have Adobe® Reader loaded on your

computer to open the forms.

Information packets for additions, finishing a basement, guidelines for decks, inspections, new home guidelines, pools and sheds are all there. Permits for building, electrical, plumbing, fire and mechanical as well as certificate of occupancy forms are also online.

After completing the form, bring it to the building department in Borough Hall, along with any fees applicable.

D.A.R.E. Holding Annual Golf Outing

On Monday, June 7, D.A.R.E. New Jersey will hold their 13th Annual Golf Open at the Olde York Country Club in Columbus, NJ. Registration and luncheon buffet begins at 11 a.m., with the Shotgun Blast starting at 1 p.m. Olde York Country Club is a Gary Player Signature Course, which will make for interesting play. The dinner and awards reception will follow at 6 p.m., at which time the winning team will be presented with the Jeffrey M.

Creamer Memorial Award. This award is presented annually in memory of Jeffrey, an innocent victim who lost his life in the hands of a drug abuser. The Creamer family has been instrumental in helping fight the war on drugs and violence in the State of New Jersey.

D.A.R.E.—Drug Abuse Resistance Education is the largest non-profit organization in the world, teaching drug abuse and violence prevention. The

D.A.R.E. Program utilizes uniformed law enforcement officers, in conjunction with classroom teachers, in education students K-12 about leading a drug and violence free life. This event has many sponsorship opportunities available and foursomes sell out quickly.

For additional information, please contact Mindy Lazar, Special Assistant to the Chairman and CEO at (800) DARENJ.

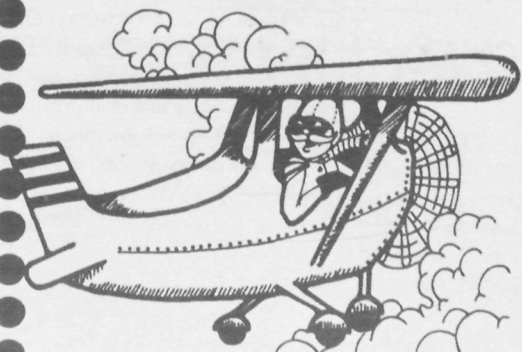
Get on board!

Call to
reserve
space!

Deadline is
March 22

On April 2, the *Observer* will be mailed to every household in South Plainfield...

Don't miss this unique opportunity!



To reserve
your space, call

908-668-0010

Hot & Cold CATERING

BEST

✓Quality

BEST

✓Service

BEST

✓Value

CALL US TO ARRANGE YOUR PARTY!

**BUY ONE
6" HERO
GET 2ND ONE
.99¢**
Valid thru 3/26/04

**\$500
OFF ANY
CATERING
ORDER
OVER \$50**
Valid thru 3/26/04

"Quality Food For
Everyday Heroes"

**HOMETOWN
HEROS**

340 Hamilton Blvd.,
(908) 755-HERO (4376)

OPEN 7 DAYS

JUST OPENED

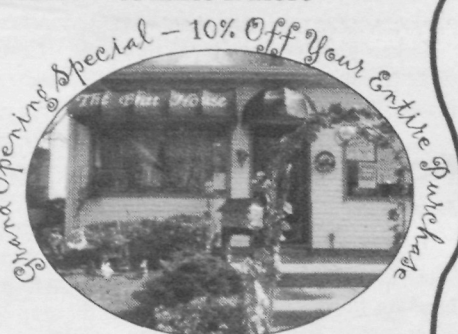
The Brat House

Handmade Country Crafts & Gifts including:

~Wreaths & Floral Arrangements~
~ Bird Homes ~ Candles & More

Call us at
908-754-3373
for store hours

Plaques and
Home Decor
Seasonal Items
Custom Orders



175 Front St., South Plainfield

Major Credit Cards Accepted

Around Town

VFW Monthly Dinner

March 19

The monthly dinner sponsored by the VFW Memorial Post 6763 will be held March 19 at the post home, 155 Front St. from 5 to 8 p.m. Diners have a choice of either a meatloaf or fish dinner. Donation is \$7. Children 12 years and under are \$4. Take-outs are available. For more information, call (908) 668-9751 after 3 p.m. daily and after 12 Noon weekends.

St. Stephen's Plans Spaghetti Dinner

March 20

St. Stephen's Lutheran Church, 3145 Park Ave. is hosting an All-You-Can-Eat Spaghetti Dinner on Saturday, March 20 from 5 to 7 p.m. The cost is \$5 a person and children under 12 are free. This cost includes beverages and dessert. No reservations are needed.

For information, call (908) 757-4474.

Pilgram Covenant Coffee House

March 20

Pilgrim Covenant Retreat Committee is inviting you to attend their coffee house, where you can enjoy good fellowship and great entertainment on Saturday, March 20 at 7 p.m. The admission is \$5 per person. If you need more information or wish to perform, please leave a message at the church at (908) 756-2474. Pilgrim Covenant Church is located at 3121 Park Ave.

Knights of Columbus St Patrick's Party

March 20

The South Plainfield Knights of Columbus will hold their annual St. Patrick's Day Party on Saturday, March 20 at the Knights hall at 334 Hamilton Blvd. from 8 to 12 p.m. The cost is \$20 per person and includes a corn beef and cabbage dinner. It also includes an open bar (beer, wine and soda) and a DJ will be playing classic Irish music. If interested please contact Jim Shea at (908) 756-0478 for tickets because seats are limited.

American Legion St. Patrick's Dinner Dance

March 20

Mark your calendar for Saturday, March 20 to attend an evening of fun, food and entertainment at American Legion Chaumont Post 243's annual St. Patrick's Day Dinner Dance.

Tickets are \$15 and include top quality corned beef with cabbage, D.J. entertainment with prizes, a basket of cheer raffle and refreshments. The dinner dance will be held from 6-11 p.m. and all proceeds will benefit The American Legion Post 243 scholarship fund.

Tickets may be purchased in advance (recommended), or at the door. Phone (908) 668-9414 for directions.

Franklin PTA Auction

March 20

SOLD OUT!
No tickets available at the door
The SPHS gym.

Troop 207 Chili Fest

March 21

BSA Troop 207 from the Knights of Columbus will hold their 5th an-

What's happening in MARCH

EVENTS

Adult Crafts 9:30-11:30am
Yoga 10:30-11:30am
Drawing Class 11:30am-12:30pm

22

Bingo 10am-2pm
Ladies Social Group 10am
Lunch Available
Income Tax Prep 9am-Noon
Computer Class 12-2pm

23

Exercise 8:45-9:45
Movie Time 11:30am
AARP Crafts 1pm
Computer Class 11am & 1pm
Line Dancing 10-11:30am

24

Weekly Shopping at Pathmark 9am
Practical Crafting 10-11am
Income Tax Prep 9am-Noon
Pinochle Club 1pm

25

Bingo 10am-2pm
Pizza Lunch Avail.
Bridge Club 12:30pm

26

Daily Events
9-11 AM Coffee & Cake
9 AM-4 PM Cards & Pool
(908) 754-1047

The Senior Citizen's Center is open Monday through Friday 8:30 a.m.-5 p.m.
NOW OPEN SATURDAYS 9:00 AM-12:30 PM—CREATIVE PAINTING 10AM

Senior Center EVENTS

MONDAY	TUESDAY	WEDNESDAY	THURSDAY	FRIDAY
April 7: Atlantic City Trip to Taj Mahal May 26: Hunterdon Hills Playhouse "Everyone Loves Opal" June 10: Trip to the NJ Performing Arts Center "Les Miserables"			Shopping Pathmark 9am Practical Crafting 10am to 11am Income Tax Preparation 9am-Noon Pinochle Club 1pm	Bingo 10am-2pm Pizza Lunch Bridge Club 12:30pm Men's Forum Steering Committee Meeting
Adult Crafts 9:30-11:30am Yoga 10:30-11:30am Drawing Class 11:30am-12:30pm	Bingo 10am-2pm Ladies Social Group 10am Lunch Available Income Tax Prep 9am-Noon Computer Class 12-2pm	Exercise 8:45-9:45 Movie Time 11:30am AARP Crafts 1pm Computer Class 11am & 1pm Line Dancing 10-11:30am	Weekly Shopping at Pathmark 9am Practical Crafting 10-11am Income Tax Prep 9am-Noon Pinochle Club 1pm	Bingo 10am-2pm Pizza Lunch Avail. Bridge Club 12:30pm

TO SIGN UP FOR MEMBERSHIP IN THE SENIOR CITIZEN'S CENTER, VISIT THE CENTER.

nual "All You Can Eat Chili Fest" on Sunday, March 21 at the South Plainfield High School Cafeteria from 3 to 7 p.m. Tickets are \$4 each and can be purchased from any Troop 207 Scout or at the door. This fundraiser benefits the troop to help them in purchasing camping supplies that are needed. Please come and support our Troop and enjoy the Chili.

For additional information please call (908) 753-2562.

Saul Broudy Will Perform at Library

March 21

The South Plainfield Historical Society has scheduled a live musical performance by Saul Broudy, folklorist, at the South Plainfield Public Library on Sunday, March 21 at 2 p.m.

"Singing Workers: American Occupational Folksong" is a presentation that sets you back in time before modern mass-media and widespread literacy. Workers in various occupations made their own songs to express emotions, convey information, tell stories, solidify group identity and help them make it through the day. Dr. Broudy presents the songs of railroad workers, pilots, farmers, hobos, truck drivers and other workers and discusses the role this music played in the workers' lives.

Further programming information can be obtained by emailing SPHISTORICALSoc@cs.com.

Columbiettes Easter Bunny Brunch

March 21

The South Plainfield Columbiettes will hold their Easter Bunny Brunch on Sunday, March 21 in the cafeteria of Sacred Heart School. Doors will open at 12:30 p.m. and a buffet style-luncheon will be served at 1 p.m.

Cost is \$12 for adults and \$10 for children ages to 12. Youngsters to age seven receive a basket from the bunny.

Reserve in advance and on a first come, first served basis. Give the ages of the youngsters, since baskets are age-appropriate. For tickets and information, contact Annemarie at (732) 549-2643 or Geri at (908) 753-2032.

Czestochowa Plans Chicken Dinner

March 27

The Annual Parish Chicken Dinner will be held on Saturday, March 27

from 4 to 7:30 p.m. at Our Lady of Czestochowa Parish Hall on Hamilton Blvd., sponsored by the Rosary Society. The donation is \$7 for adults and \$3.50 for children five through 12. Children under five are free. For pickup orders call the OLC Hall at (908) 753-4077 on Saturday, March 27 after 3 p.m. No tickets are necessary to attend the event.

Rescue Squad Auxiliary Basket Bingo

March 28

The South Plainfield Rescue Squad Auxiliary presents their Second Annual Basket Bingo on Sunday, March 28. Doors open at noon—calling begins at 1 p.m. sharp! The Basket Bingo will be held at the rescue squad building on Plainfield Ave. Advance tickets are \$20, at the door \$25 and include 16 games, four specials and door prizes. Raffle, 50/50 and extra boards are available. Proceeds benefit the Rescue Squad. To purchase tickets in advance, call Denise at (732) 261-8942 or Tracy at (732) 841-4844.

Recreation Plans Trip to Atlantic City

March 28

The South Plainfield Recreation is sponsoring a trip to Resorts Casino, Atlantic City on Sunday, March 28.

The bus leaves the PAL at 10:30 a.m. and returns to the PAL at 8:30 p.m. The price is \$13 per person and you receive \$15 in coins. You can purchase tickets at the PAL every weekday from 8:30 a.m. to 5 p.m.

Music Boosters Meeting

March 31

The The South Plainfield High School Music Boosters will hold their monthly meeting on Wednesday, March 31 at p.m. in the band room.

PAL Easter Egg Hunt

April 3

The South Plainfield Recreation Department will be hosting their annual Easter Egg Hunt at the PAL on Saturday, April 3. This event is open to all South Plainfield children ages one to 10.

The hunt will start at 1 p.m. behind the PAL building. The rain date is Saturday, April 10.

The Easter Bunny will be on-hand for pictures and all children who attend will receive a gift.

— Out of Town —

Diabetes Expo

March 20

The Third Annual Diabetes Expo will be held on March 20 at the Garden State Exhibit Center in Somerset.

If you have any questions or are in need of other materials regarding the Diabetes Expo, feel free to contact Rich Hawkinson at (732) 469-7979 ext. 3520.

Woodbridge WOWs Fundraiser Dance

March 21

Woodbridge Area Widows or Widowers (WOWs) is holding a fundraiser dance on Sunday, March 21 from 7:30 to 11:30 p.m. All are welcome. A live band will be performing and we will be serving light refreshments. The cost per person is \$8. The dance will be located at the Elk's Hall, 665 Rahway Ave., Woodbridge. For more information call (732) 297-1775.

Easter Folklife Program at Olde Town

March 21

On Sunday, March 21 The Middlesex Country Cultural and Heritage Commission and the Folklife Program for New Jersey present a special folk arts program for Easter. Pysanky, Traditional Ukrainian Egg-Decorating Workshop will be led by master folk artist Olga Kobryn from 1 to 4 p.m. at East Jersey Olde Town Village, 1050 River Road, Piscataway.

To register, contact the Commission at (732) 745-4489. Hearing impairments may call (732) 745-3888 (TTY) or 711 via the New Jersey Relay Service. East Jersey Olde Town Village is a fully accessible site; an Assistive Listening System will be in use during the program.

Oratorio Singers to Perform

March 21

The Oratorio Singers of Westfield, will present Giuseppe Verdi's grand and glorious Requiem on Sunday, March 21 at 3 p.m. at the First United Methodist Church, 1 E. Broad St. in Westfield.

General admission is \$18 and students and seniors are \$12. For further information, call (908) 233-4211.

CHATS Adoption Group Meeting

March 22

CHATS (Connected Hearts Adoption Triad Support) will meet 7:15 to 9:15 p.m. on Monday, March 22 at Watchung Avenue Presbyterian Church, 170 Watchung Ave., North Plainfield. The topic is "Music's Hidden Meanings to Those Affected by Adoption," led by adult adoptee Adam Davis. Bring a CD or tape to share. Open sharing of adoption-related stories are welcome and light refreshments will be served. Check our new website at www.chatsnj.com or call Alyce at (732) 227-0607 for information.

New JFS Focus Group

March 22

The clinical department at Jewish Family & Vocational Service (JFVS) of Middlesex County is offering a psycho-educational group focusing on depression. The group will meet for four consecutive Mondays, starting Monday, March 22, will be close Monday, April 12 for Passover. The last meeting will be held on April 19. Meetings begin at 6:30 p.m. at the JFVS office at 515 Plainfield Ave., Suite 201 in Edison. The fee is \$40 for the full four sessions.

For information or to register, please call Stasia Pomano at (732) 777-1940. Please register by March 10.

A Celebration of Greek Dance

March 27

On Saturday, March 27 at 6:30 p.m., the Middlesex County Cultural and Heritage Commission and the Folklife Program for New Jersey will present *A Celebration of Greek Dance*, at the Plainsboro Community Middle School, 55 Grovers Mill Road in Plainsboro.

A Celebration of Greek Dance is offered free of charge; however, registration is required. Plainsboro Community Middle School is an accessible site. An Assistive Listening System will be in use and available. If you would like to attend, call (732) 745-4489. Those with hearing impairments may call (732) 745-3888 (TTY), or 711 via the New Jersey Relay System.

Depression and Bipolar Support Meeting

March 31

The Depression and Bipolar Support Alliance meeting on Wednesday, March 31, will feature Nancy Block, M.D., who is a Board Certified Psychiatrist with a private practice for adults, children, adolescents and families in Scotch Plains.

Her topic for the evening will be "Observations on Managing Depression and Bipolar Illness."

The meeting takes place monthly at 7:30 p.m. at the Morristown Unitarian Fellowship, 21 Normandy Heights Rd. in Morristown. Meetings are open to the public; a nominal donation is requested from non-members.

For information, call (973) 994-1143 or the New Jersey Self Help Clearing House at (800) 367-6274.

SEND YOUR EVENTS TO:

South Plainfield Observer, 1110 Hamilton Blvd., Suite 1B, South Plainfield, NJ 07080 or fax (908) 668-8819; email ggnan@aol.com.

southplainfieldpeople Milestones



Elks Essay Contest Winner is Announced

One of the programs of Benevolent and Protective Order of Elks (BPOE) is to sponsor an essay contest with a patriotic theme. This year's theme was "Why I am Proud to Say the Pledge of Allegiance." South Plainfield Lodge 2298 had two winners in the district. First place went to seventh grader Kaitlyn Salvatore and third place went to sixth grader Melissa Valdivia, both of Sacred Heart School. Lodge Chairman Daniel Uken would like to thank all who participated in the contest.

Below is the first place winner Kaitlyn Salvatore's essay:

Why I am Proud to Say the Pledge of Allegiance

I am proud to say the Pledge of Allegiance because I feel lucky to be an American citizen. Saying the Pledge of Allegiance every morning reminds me how lucky I am to be living in this wonderful and free country that we call America. In this country, men and women are equal. On the morning of September 11, our nation saw one of the most violent attacks that the United States of America has ever witnessed. The people behind this wicked act thought that this would surely separate our nation. Instead this act made us all one. It united us and we were there for each other. Since then the words of the Pledge of Allegiance have taken on new meaning for many people. It lets me remember that I am lucky to be saying these words because many people in other countries do not have this kind of freedom. It reminds me that I am lucky to be alive because many people will never be able to say these words again. It also reminds me of the men and women fighting in the war. They are fighting for freedom and freedom is the basis of the Pledge of Allegiance.

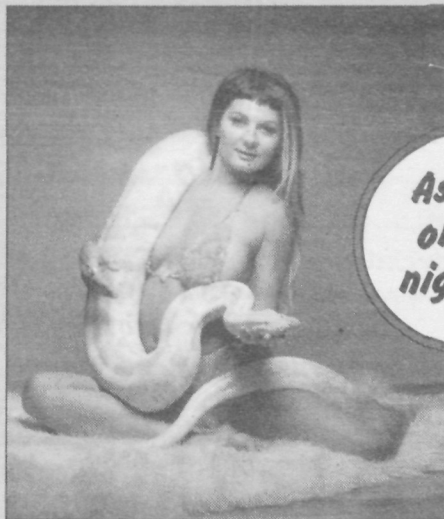
ALERT SPECIAL MEETING DATE

Special Meeting Notice

Please be advised that there will be a Special Public Meeting of the South Plainfield Governing Body at 7 p.m. on March 29, 2004 for the following item:

1) Adoption of Ordinance #1654 amending Ch. 157 of the Code of the Borough of South Plainfield entitled: "Sewers."

Liquid
Assets presents...



*As seen
on late
night TV!*

Kiva the Grindergirl

**** Friday, March 19 ****

SHOWTIMES: 11 PM and 12 PM

No Cover No Minimum (908) 753-0290

118 New Market Ave., South Plainfield

www.liquidassetsni.com

Golden Key Int'l. Honour Society Inducts Shannon Bishop

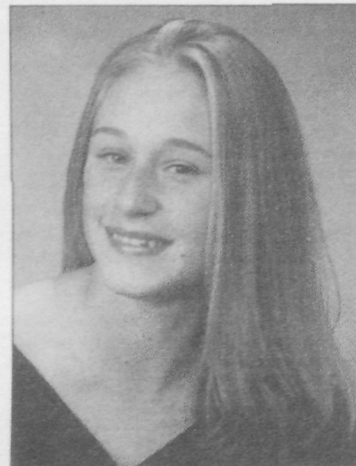
Shannon L. Bishop has accepted membership in Golden Key International Honour Society and was individually honored during a recent campus ceremony.

"It is only fitting that a high academic achiever like Shannon be recognized by Golden Key," said Alexander D. Perwich II, Golden Key's Chief Executive Officer. "Our members are inspired and motivated by the challenge not only to be recognized for their outstanding accomplishments, but also to make a positive impact on our world through the Society's commitment to service."

Golden Key International Honour

Society was founded to build global communities of academic achievers by providing opportunities for individual growth through leadership, career development, networking and service. The Society's values are integrity, inclusiveness and collaboration, innovation, teamwork and respect. Golden Key has 335 chapters in the United States, Australia, Canada, Great Britain, Malaysia, New Zealand and South Africa. Membership into the Society is by invitation only, to students in all fields of study.

Shannon is the daughter of Scot and Debra Bishop of South Plainfield.



Shannon L. Bishop

Rebecca Horn Working on WWII Film Documentary

Rider communication major Rebecca Horn is gaining a close-up perspective on the ravages of World War II. Her independent study assignment entails editing a film of a formerly war-torn Romanian city at the request of her first local client.

Horn, a graduate of South Plainfield High School, is the daughter of Martin and Catherine Horn. She is an outstanding student at Rider, as well as when she attended SPHS, and will be graduating with honors.

Working closely with Princeton resident Ben Yedlin, a former ball turret gunner who flew on bombing missions to the city of Ploiesti (pronounced Ploy-est), Horn is currently editing nearly 14 hours of rough film footage that Yedlin took during trips there in 1994. Once edited, the film footage will be used as a documentary which Yedlin plans to submit to broadcasters.

For several months, Yedlin, a retired homebuilder, was on the lookout for technical assistance. After contacting several schools, he chose Rider and spoke to Shawn Kildea, coordinator of Rider's TV production studio, who felt that Horn was the best person to tackle the job. "Becky is one of the finest students I've had the pleasure to know here at Rider," said Kildea. "She knows how to deliver."

Horn's work is actually Yedlin's third documental project. His first one, "B-24 Bomber Crew," was

broadcast on the History Channel in 1994. His second, "Brother Men Who Fly," was independently produced and presented on Veterans Day in Princeton and at the Algonquin Festival in Pennsylvania last year.

Yedlin was based in southern Italy from April through July of 1944. Flying with the 719th Squadron, 449th Bomb Group, he was among scores of American and British airmen charged with bombing Ploiesti's many oil fields and refineries. The city provided nearly one-third of the fuel oil that the Germans used for planes, tanks, trucks and so forth.

Horn talks often to Yedlin on the phone and via email. He also stops by Rider's TV studio on a weekly basis to see the film's progress.

"The biggest challenge is the language barrier," said Horn, who aspires to become a TV or film producer. "Almost everyone in the footage speaks Romanian so to watch it

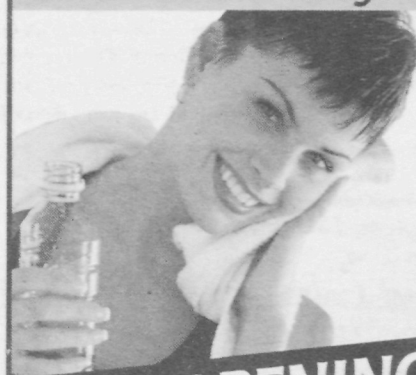
and edit it correctly is the hardest thing. I am working with a local high school student who is helping to translate things for me.

For Horn, it is just the beginning to a bright future. "At Rider, I have been given so many opportunities to do various aspects of TV production. Everything interests me. I don't want to limit myself to one thing."



ATTENTION LADIES!

Announcing The Opening of the Hottest 30 Minute Circuit Training & Weight Loss Center



- Ladies Only - No Guys
- 26 Station Circuit Training
- Award Winning Weight Loss System
- Fast - Safe - Simple
- Quick Results

PRE-OPENING SPECIAL!
FIRST 100 MEMBERS
NO MONEY DOWN
HURRY CALL NOW!!

LADIES



SOUTH PLAINFIELD

902 Oaktree Road

Intersection of Park Ave. & Oak Tree Rd.

Across from the Super A&P

CALL (908) 756-9911 NOW!

www.ladiesworkoutexpress.com

Ladies Workout Express is a subsidiary of Lady Of America, The World's Largest Chain of Women Only Fitness Centers.

**What's going
on in your
neighborhood?**

*Read all about it every
week in the only paper
for South Plainfield, the*

OBSERVER

*To subscribe,
call 908-668-0010.*

**South Plainfield
Observer**

Your #1 Source for South Plainfield News

Middle School Honor Roll

High Honor Roll

8th Grade—Brooke Denitzio, Robert Harrington, Przemyslaw Lasota, Raymond Lee, Ashley Peterson, Daniel Pompilio, Mitul Rana, Kelly Remsing, Sarah Schulte, Rachel Senz, Anthony Simone and Olivia Smith.

7th Grade—Jorge Alvarez, Audrey Cupo, Rebecca Deffler, Quynhnhu Doan, Lindsay Fredericks, Maricela Gonzalez, Nicholas Jeglinski, Catherine Krawiec, Joseph Mennuti, Lyndsey Murtagh, Patrick Notly, Nosavoen Ogbveen, Michael Pachytel, Allyson Paterek, Kara Thomas, Isabel Vordzorgbe and Erik White.

Honor Roll

7th Grade—Daphne Aguinaldo, Daniel Alligier, Michelle Arancio, Arielle Armand, John Barry, Samantha Barthel, Francesca Bayak, Darnell Beverley, Cori Black, Jacqueline Bosse, Michael Boyle, Kenneth Breslau, Michael Bumback, Michael Burton, Maxwell Butler, Danielle Butrico, Ashley Cardinale, Kurt Carlson, Henry Carrillo, Alex Cihanowycz, Allison Clawans, Sean Coffey, Ian Collins, Sara Crane and Jared Czech.

Ann Thao Dang, Jeannine DeAndrea, Michael Dezman, Steven Diaz, Stephanie Dicindio, Justin Ditmars, Courtney Easterday, Tina Foscolo, Kelliann Friday, Christopher Fulton, Jaime Giannakis, Viktoriya Glushko, Keri Gould, Jessica Handwerger, Alba Hernandez, Caitlin Herriott, Terry Ho, Chelsea Hunt, Garrett Kelly, Jaclyn Kukuch, Joseph Lacerda, Stephanie Lanza, Jacqueline Laverne, Zane Lesky, Christopher Lesniak, Anthony Louise, Jeremiah Magpile, Alyssa McCreesh, Timothy Moskal and Jessica Murtagh.

Brittany Musolino, Joanna Nastarowicz, Victoria Nguyen, Alex Nieradka, Kirsten Nuber, Emily Orlandini, Dominic Papa, Parth Patel, Priya Patel, Kathryn Paterek, Nicholas Pauls, Sandra Pleeter, Douglas Porzio, Timothy Ratti, Anthony Salerno, Parvatan Sami, Jeric Santos, Saira Sheikh, Theo-

dore Skwiat, Rachel Smith, Taheem Smith, Christine Snogans, Nora Stasio, Heather Stolloff, Scott Suleski, Alyssa Sutherland, Elizabeth Tran, Loan Tran, Victoria Tran, Brittany Tucci, David Valeric, Nicholas Vallone, Andrea Vedutis, Stephen Wagner, Kaleigh White, Steven Wiczorek and Kristen Yorkanis.

8th Grade—Francis Alfano, April Ayers, Scott Barton, Kristin Billich, Lillian Blanco, Rebecca Bosse, Nicole Brooks, Caryn Butrico, Brianna Claderone, Paolo Cantarella, Jennifer Capparelli, Vanessa Castebianco, John Christ, Grey Coppi, Jonathan Cursi, Joseph Dacchille, Kyle Darr, Christopher Delaney, Danielle Dembia, Christopher Deoliveira, Karan Desai, Elizabeth Diamant, Christopher Duquette, Andres Erazo, Marvin Escobar, Daniel Espin, Brian Fabino, Meredith Ferguson and Elizabeth Flannery.

Julian Garbowski, Tara Goitandia, Andrew Gray, Jessica Gray, Hakim Hardy, Taylor Harris, Matthew Helgesen, Blaire Houston, James Howard, Theresa Huber, Mantesh Kaur, Taylor Kurilew, Gina Lampasona, Kimberly Le, Jeffrey Licato, Erica Linick, Jonathan Marcoux, Kellie Mclean, Rachel Milliron, Robert Moreira, Diana Naser, Christina Nieves, Katie Nuber, Lauren O'Day, Sarah Oglesby, Jamie Okosko, Michael Oprysk, Kristen Partesi, Anjani Patel, Shivani Patel, Vinal Patel, Christopher Pennisi, Stephanie Penny, John Polizzano, Russell Pornovers, Hosnia Qayum, William Rickert, William Ritchey and Alyssa Roibal.

Ashley Sacks, Leslie Samayoa, Simone Sealy, Aakruti Sheth, Jasmine Silas, Elan Sims, Ginarose Siringo, Alison Smith, Samantha Smith, Chelsea Soisson, Christopher Spayder, Stanley Stellakis, Kathleen Sullivan, Stephanie Szeliga, Ryan Szumski, Amanda Thorn, Anh-Phuong Trinh, Mark Wagner, Christopher Ward, Gregory Watts, Courtney Wilhelm, Katiejean Zacek and Julia Zappi.



Niemczyk Celebrates 50th Season at Recreation

On Saturday Feb. 28, the Recreation Department concluded their 50th season of youth basketball. The one constant during the entire 50 year tenure of the program has been Ed Niemczyk. In tribute to him, the league was officially named after Ed a few years ago. Ed could be seen every Saturday during the basketball season sitting on top of the stage at the Middle School.

The high school and middle school teams have experienced a lot of suc-

cess this season. The roots of those successes can be found in the Recreation Program founded by Ed in 1954. Children representing the A and D leagues, presented Ed with a basketball commemorating his 50th year on the final Saturday of competition.

Always the gentlemen, Ed's spirit and enthusiasm have helped not only the basketball program grow, but as an extension, allowed our community to grow as well.

Riley Students "Read For The Gold"

The students of J.E. Riley School "Read for the Gold" throughout the month of February. Friendly competition yielded fantastic results as the students read nightly for the chance to be the "gold" winner for their class that week and collected money to benefit the Special Olympics.

Each week in February was associated with a different Olympic event, and each week students competed for the "gold" in this event. The "gold medal" (or in this case a small prize) was awarded to the student in the class with the highest number of pages read that week. The children were asked to bring in a penny for every page read. By the end of the month, they had collected \$444.

The students at Riley School should be proud of their accomplishments. They are to be congratulated on their commitment to reading and to helping others.

Thanks to everyone—students, teachers, administrators, and parents, for supporting the read-a-thon and for encouraging reading as a lifelong pleasure. Special thanks, also, to Diane Hunteerton and Maggie Temple, who collected the tally sheets and money from the classrooms each Friday.

Submitted by Mary Piekarski

Local Residents To Help Serve Up Kindness

After a winter chock full of snow, ice, freezing rain and sub-zero temperatures, what could be more comforting than a piping hot bowl of soup?

Not just any soup, mind you. What is being ladled out not only tastes good and nourishes, it also benefits children who are victims of domestic violence.

On April 19 Women Aware will host its twelfth annual "Taste of Kindness Soup Kitchen" fundraiser at the Pines Manor in Edison. The doors will open at 6 p.m. sharp, and when it is time, attendees will have the opportunity to taste gourmet soups, breads and desserts from some of the finest dining establishments in Middlesex

County, including La Fontana in New Brunswick, Dan's on Main in Metuchen and Sophie's Bistro in Somerset, to name just a few.

Women Aware is the only dedicated domestic violence agency in Middlesex County that serves victims of domestic violence through a 24-hour helpline, a temporary protective shelter, legal advocacy, individual counseling, support groups, community education and children's art and play therapy. They do not charge for any of its services. Proceeds from the Soup Kitchen fundraiser fund the ELVES program, an acronym for Empowering the Littlest Victim to Emerge Strong.

Domestic violence is a growing problem, not only in Middlesex County, but in New Jersey and the United States in general. In 2003, over 87 women and 76 children received shelter at Women Aware. The agency responded to approximately 7,000 telephone calls.

According to Eve Hook, the fundraising coordinator, this year's event is more of a community affair than ever before. Restaurants, as well as other organizations from all over Middlesex County are participating in "A Taste of Kindness." In South Plainfield, more than 20 students from the Student Leadership Group will be on

hand, to serve soup and help work the event. Last year's fundraiser raised more than \$40,000.

Hook, a 27-year South Plainfield resident, is no stranger to fundraising. This is her sixth straight year coordinating the "Taste of Kindness." Prior to becoming involved at Women Aware, Hook served on the South Plainfield Board of Education between 1993 and 1996, and was a Pop Warner Cheerleading Coach. Hook became involved at Women Aware, first as a domestic violence response team member, then later on became a support group facilitator, and also a per diem counselor. Currently, Hook serves as assistant to the executive director of the agency, Jacquelyn Marich.

"What amazes me the most about doing this work," says Hook, "is how much our services are needed in the area. The paradox is that as more services and budgets are cut, the more the demand increases. That is why events such as the "Taste of Kindness" fundraiser are so important; they make up for the gap."

Tickets to the event cost \$35 in advance and \$40 at the door.

For more information or to purchase tickets to the event, contact Eve Hook at Women Aware at (732) 249-4900.

Do You or a Loved One Need Home Care?



You can receive the care you need in the privacy of your own home.

CALL DORSON HOME CARE.

732-376-0003 • 886-576-3460 • 973-672-7691

~ "Demonstrating Healthcare With Integrity" ~

We provide:

- Skilled Nursing Care
- Home Health Aides/Homemakers
- Baby Nurses
- Live-In's/Hourly

Certified, Licensed & Bonded



Can't hold it all anymore?
Clean house... have a garage

Sale!

Advertise your garage sale in the Observer.

908-668-0010

OPENING SOON!

Stepping Stones LEARNING CENTER

4001 Hadley Road - Suite F, South Plainfield, NJ
(Located down the road from Kmart)

- ☐ Ages 2½-5 years
- ☐ State-licensed, Certified, Experienced Staff
- ☐ Full or Half Day Sessions
- ☐ Full Day Kindergarten with Before & After School Care
- ☐ Nursery School Program for 3 & 4 Year Olds
- ☐ Developmentally Appropriate Curriculum
- ☐ Cold Breakfast and Snacks are Included
- ☐ Large Indoor and Outdoor Play Areas

Enroll Now
908-755-9669

Open Year Round
7AM-6PM
(Mon.-Fri.)



FAST APPROVALS...GREAT RATES...PERSONALIZED SERVICE

We Specialize in No Cost Refinancing

Free Pre-Qualifications

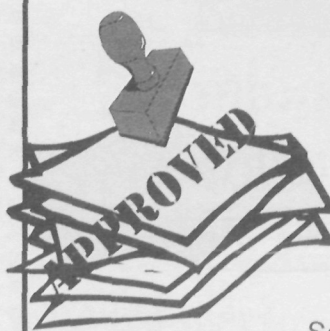
Purchases • Refinance • Debt Consolidation

Past Credit Problems Understood

No Income Verification Loans

Borrow up to 125% of Value • Loans

Mixed Use and Commercial Properties



Mike Dixon,
President

Licensed Mortgage Broker - NJ Dept. of Banking

Se Habla Espanol

908-822-0090

2325 Plainfield Ave. Suite 2E South Plainfield, NJ

Moretti Realty Earns Centurion Office Award

Century 21 Moretti Realty has announced that it recently received Century 21 Real Estate Corporation's Centurion Office Award for production for its impressive sales in 2003. The Centurion Award is presented to Century 21 System offices that achieve or surpass specific sales criteria. Moretti Realty was the number one Century 21 office in Middlesex County for 2003.

Century 21 Moretti Realty will receive a Centurion trophy at their Regional annual awards ceremony, along with a Centurion lapel pin and recognition at the international convention.

"The individual efforts and dedication displayed by each member of our team, in achieving this significant accomplishment is to be commended," said Guy Moretti, president and chief executive officer, Century 21 Moretti Realty.

Recognizing the extra ordinary efforts of its sales force to reach this milestone, Guy Moretti announced Andrea Lacerda and Mary Ann Lisewski, sales associates with the office, achieved double Centurion sales status. "Both Andrea Lacerda and Mary Ann Lisewski are consummate professionals who time and time again exceed the expectation of their clients in order to provide an unmatched level of service and peace of mind during a real estate transaction," said Guy Moretti. "Andrea and Mary Ann are leaders and innovators in the real estate community, and Century 21 Moretti Realty is extremely proud to have them on our team."

"Tony Lopez has earned the Centurion Sales Award for 2003. Tony is a leader in delivering powerful home buying and selling choices to his clients, because he knows the communities he serves," said Moretti. "Tony Lopez is a valued and trusted real estate resource for the Middlesex and Union County markets and a major contribution to the success of Century 21 Moretti Realty."

Century 21 Moretti Realty is a full service brokerage servicing Middlesex, Union and Somerset Counties specializing in new home properties. See www.morettiirealty.com for further information.

Terra Nova Garden Club News

The Terra Nova Garden Club will hold its March monthly meeting on Wednesday, March 24, at 6:45 p.m. at the North Edison Library, 777 Grove Ave. in Edison. The program for the evening is "Exploring Gardens in the Tri-State Region" presented by Edith Wallace. The presentation is free and open to the public.

The Garden Therapy committee will meet at 1 p.m. on March 17 at the Muhlenberg Adultcare Facility in Plainfield.

Don't Miss this Opportunity! While other papers offer less and less coverage of South Plainfield, count on the Observer to continue to provide local coverage, exclusively, every Friday!

To subscribe, call 908-668-0010.

South Plainfield Observer

Your #1 Source for South Plainfield News
www.spsobserver.com • email: ggnan@aol.com



John E. Riley Students Celebrate Grandparents

Hundreds of grandparents filled the gym at Riley School last Friday to attend the Annual Grandparents Day Program. Guests enjoyed a breakfast served by class mothers and then were treated to a show by students from kindergarten, first and second grades.

Both the grandparents and students were decked out in green in honor of St. Patrick's Day. The families of the participating classes donated food, candy and household products to fill baskets, which were given away before the breakfast began.

As in the past, Anthony Sincavage, Riley School's principal from 1973 to 1994, was on hand for the show. Superintendent of Schools Dr. Robert Rosado, Assistant Superintendent Anthony Massaro and School Business Administrator Ed Izbicki also attended the celebration.

Barbara Harris's art class spent hours creating place mats for every guest. Students recited several poems, and performed songs and skits, all with the St. Patrick's Day theme. After the program grandparents were encouraged to tour the students' classrooms.

Our Lady Of Czestochowa R.C. Church

807 Hamilton Blvd., South Plainfield

invites you to join their parishioners in worship

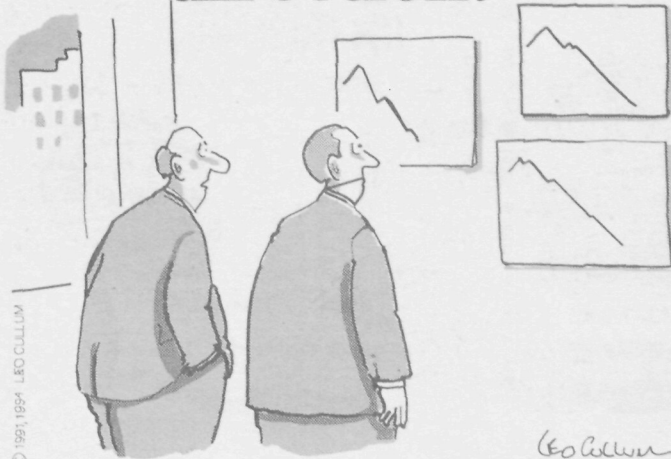


Regular Masses:

Daily at 8am, Wed. eve. at 7:30
Saturday eve. at 5:30pm, Sunday morn. 8am & 11am

Stations of the Cross - 7:30pm
Every Friday during Lent

Is your business headed in the right direction?



Advertise in the Observer.
Call 908-668-0010 for rates.

Twin City Pharmacy

Tel. (908) 755-7696 Fax (908) 755-6003
1708 Park Ave., South Plainfield, NJ 07080 (Next to Farmer's Market)

Today's Modern Pharmacy with Old Fashioned Values



NOW AVAILABLE
Images of
America
South Plainfield

DME Provider for US Healthcare/AETNA & CIGNA

Medicare and Medicaid Provider
Solaris In-Network DME Provider

- Ostomy Supplies inc. Hollister & Convatec
- Full Line of Diabetic & Wound Care Products
- Hospital Beds - Commodes
- Wheelchairs - Walkers
- Enteral Feeding Supplies & Supplements

Haven Hospice Provider for JFK & Muhlenberg Hospitals

24 Hour Emergency Care Service - Free Delivery

Sports

Saint Joseph HS Swim Team Finishes A Perfect Season

Will the Saint Joseph High School swim team of 2003-2004 be placed in the history books as the greatest swim team New Jersey has ever developed? Time will only tell. The team finished its season with a perfect season. Presently, the team is ranked first in the state for this year. Some authorities ranked the team the third best in the history of swimming in New Jersey but this was prior to St. Joe's capturing the State Championship and heavy wins at Meet of Champions.

South Plainfield residents Calvin John Smiley, co-captain and senior, and Philip Luzny, freshman, are members of this team. St. Joe's defeated Holy Cross 118 to 52 during the first round of state competition. During the second round of state competition St. Joe's defeated St. Peter's Prep with a score of 130½ to 39½. State competition against Christian Brothers Academy took place at The College of New Jersey on Feb. 28. The final score was St. Joseph 126, CBA 44. The state competition started with St. Joe's winning all eleven events, sweeping 100 freestyle, 500 freestyle, and 100 backstroke by taking the first, second, and third places.

Calvin John placed second in the 100 freestyle behind his teammate Bobby Savulich, the top swimmer in the state and also placed second in the 50 freestyle and swam in the 200 and 400 freestyle relays. Both relays took first place. Philip Luzny placed third in the 100 butterfly as well as third in the 200 medley relay.

The Meet of Champions was held at Gloucester County Institute of Technology on March 6-7. Both Philip and Calvin John qualified for their events. The Meet of Champions is a qualifying meet where the best swimmers from New Jersey compete in individual events and relays. While Smiley and Luzny swam their best times in the individual events, they did not qualify for the finals. However, Smiley did qualify with his team-

mates (E. Swenson, M. MacDonald, S. Rosales, B. Gartner, B. Savulich, B. Swenson) to swim the 200 Freestyle Relay and the 400 Freestyle Relay. Not only did St. Joe's take first place for both of these relays, the team also took first place for the 200 Medley Relay, making them only the third high school in the history of this competition to win all three relays. Smiley was especially happy with the time of the 400 free relay (3:11:7) which qualified him as an All American.

Presently, Smiley has narrowed his college choices to either Lehigh University, Rutgers University or Marist College. Teammate Brian Gartner placed a first in the 100 backstroke breaking the school record held by St. Joe's Coach Steve Whittington, who has held that record since 1992. Gartner also placed second in the 100 butterfly. He will be swimming for the University of Pennsylvania in the fall. Eric Swenson won the 100 breaststroke and placed third in the 200 Individual Medley. Swenson will be swimming for Notre Dame in the fall. While Philip is just a freshman, he will be one of the swimmers to watch next year at St. Joe's. Achieving what he did this year as a freshman was quite an accomplishment for Philip.

St. Joseph had previously placed 1st at the Pirates Invitational, first place at the Eastern States Long Island Invitational, First Place at GMC's and have six All American swimmers. The team holds 26 GMC Championships and 21 State Championships. They defeated nationally ranked Greenwich, Ct. High School swim team and LaSalle Prep School Swim team during this season. Good luck to all the swimmers in their future endeavors.

Calvin John and Philip are also members of the South Plainfield Tiger Sharks and will be competing this summer at the South Plainfield Community Pool.

Jimmy Conroy Takes State Title

(Continued from page 1)

"toss and elected to begin in the defensive position. With :28 left in the period, Conroy escaped and established a 1-0 lead going into the third period. With his choice in the third period, Trumbetti also opted to start in the defensive position. As Trumbetti worked to escape, Conroy used his longer legs to neutralize him as he worked for a near fall with an arm bar. But as Conroy continued to work for a tilt with the arm bar, the referee made a controversial stalemate call that got an enormous negative reaction out of the crowd and stopped both wrestling and Conroy's momentum. With thirty seconds left in regulation, Trumbetti escaped to tie the score at 1-1 and soon forced the match into overtime. That was to be the first and only point scored on Conroy throughout the tournament. In overtime, Conroy attempted an ankle pick to secure the final victory but Trumbetti countered with a wizard and fought to get out of bounds. Conroy circled away from the edge to force the action back onto the mat while attempting to get behind Trumbetti, whom he was still locked arms with. But Conroy maintained his position by managing to hook in a leg. As the arena erupted into shouts calling for points, the referee blew the whistle, looked to the score table and signaled for two takedown points. With that action, the crowd erupted into cheers as Conroy threw his arms up in victory as his odyssey ended in triumph. His magical season ended in with a 34-0 record as he enters his place alongside South Plainfield's four other state champions Joe Lemmo (1965), Steve Giordano (1989), SPSHS head coach Kevin McCann (1991), and Matt Anderson (2000).

But Conroy's victory was not the only success for South Plainfield wrestlers at this year's state tournament. In his opening match at the 275-



A banner honoring Jimmy Conroy was put up at Conroy's Funeral Home.

pound weight class, senior Ryan Elliot scored a takedown and near fall to build a 5-0 lead in the first period against Jesse Miller of Somerville. In the second period, Miller got a reversal but Elliot quickly escaped to hold a 6-2 lead at the end of the second period. Miller gained two back points in the third period, but Elliot held on for a 6-4 victory. In the quarterfinal round, Elliot was pinned by Toms River South's Shaun Wilbert at 3:36. But Elliot continued on by winning his first wrestle-back match by fall over Chris Johnsen of Parsippany at 2:26. In the wrestle-back quarterfinal, Elliot faced Stuck Joseph of Livingston and dropped a difficult 5-4 decision. Elliot regrouped, though, to pin Danny Manley of Kearney in just 56 seconds to secure seventh place.

Paul Ritchey, wrestling at 145, had

a big win on Friday night by defeating Region 8 runner up Ricky Carlson of Oakcrest 3-2. Ritchey scored the first takedown and an escape to secure the win. In the pre-quarterfinals, Ritchey faced Kyle Honickel of Voorhees and dropped an 8-4 decision. Ritchey was in a tight battle with Jason Shelsby of East Brunswick in the first round of wrestle-backs before getting caught in a combination and pinned, ending his quest for a medal. Freshman Billy Ashnault, made the trip due to an injury to Greg Schvey of Millburn and wrestling at 112 pounds, was defeated by Region 6 runner-up Luke Lanno by a score of 15-0.

Congratulations to all wrestlers, as well as coaches Kevin McCann, Bill Hamilton and Shane Kagan on a great tournament and season as a whole.

Are you a high school student who loves sports and attends SPSHS sporting events? THEN WE WANT YOU!
Call the Observer at 908-668-0010 for details.

Dining Out!

WHERE TO EAT IN AND AROUND SOUTH PLAINFIELD

Charlie's
ICE CREAM FACTORY

ORDER YOUR ST. PATRICK'S DAY CAKES NOW!

\$2 OFF 8" OR LARGER

Golden Acres Shopping Ctr.
3600 Park Ave. So. Plainfield
(908) 769-0016

Charlie's Ice Cream Factory

Open Daily

CAPT. WONKA'S
Fish n' Chips

ENGLISH & SOUTHERN STYLE FISH, CHIPS & MORE...

Tel (908) 222-2025

1912 Park Ave. South Plainfield

METRO HUT
Cheesesteaks & More

OPEN MONDAY TO SATURDAY
6:30 am-3:00 pm

Come in today & try a freshly made panini sandwich!

409 Hamilton Blvd. • S. Plainfield
(908) 222-9595

Catering Available ~ We Deliver

Advertise in the South Plainfield Observer Dining Guide. Choose from a one column (\$180) or two column (\$360) ad that runs for 10 weeks. We will design a custom ad for your business. Also included is a one-time feature with write up & photo.

Why Cook? Enjoy one of these South Plainfield restaurants everyday.

For more information, call 908-668-0010.

Sports

By Lee Flanagan

JUNIOR BASEBALL CLUB NOTES

Saturday's C League Orientation has been canceled due to the weather. All C-League parents, coaches and kids will be asked to participate in this event when it is rescheduled. There will be twelve different stations to educate everyone on the way the SPJBC works.

On Saturday, March 20 the following teams need three parents each to represent them for our annual pre-season work details, beginning at 8:00 a.m. The Small Fry B-Braves, Mets, Orioles, Twins, and Yankees along with the Small Fry A-Red Sox. In Pony B we have the Blue Jays and Rockies and in Pony A are the Marlins. That will give us at least 27 parents on March 20. Also on March 21, the Small Fry C-Diamondbacks, Angels, Yankees and Pirates will be joined by the Small Fry B-White Sox and



Small Fry A-Astros. On the Pony level, the Pony B-Indians will be joined with the Pony A-Mariners and Mets. Again that will give us 27 parents to start getting the complex ready for the up-coming season.

Please do not use the fields at the complex; you can use the batting cages. When the red flag is up that means to stay off the fields. Thank you for your cooperation in this matter.

Upcoming Fundraisers

March 27 at Franklin School
Pancake Breakfast

April 17 at Roosevelt School
Spaghetti Dinner

April 24 at the Complex
Flea Market, vendors are needed.

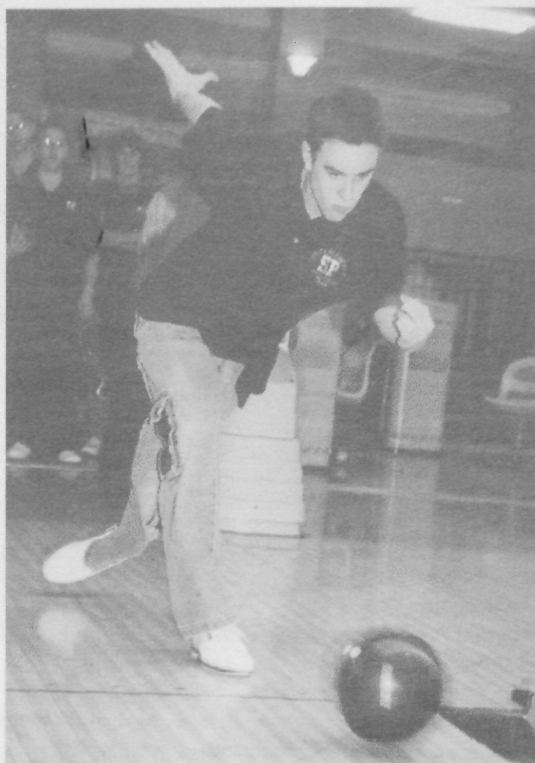


Gymnasts Advance to Regional Championships

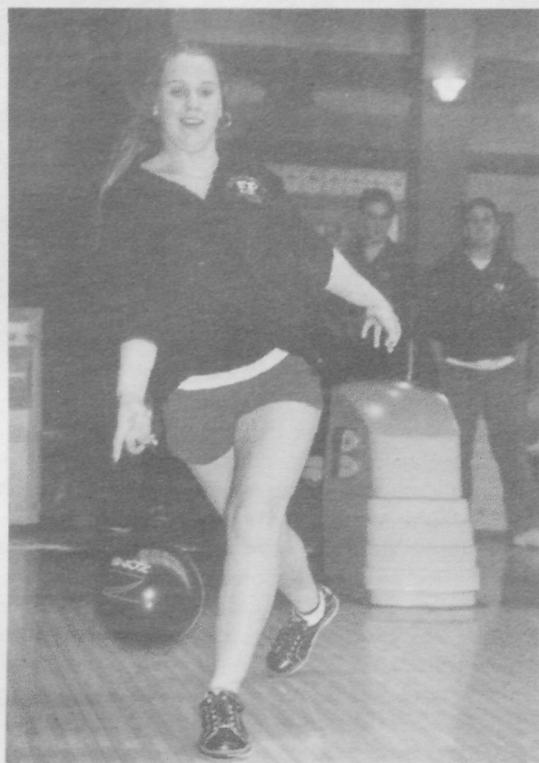
Michelle Kobilis and Corinne Tweddel both advanced to the Level 9 Regional Championships to be held in Virginia Beach, Va. on April 3. They qualified by scoring 34.2 and 34.3 respectively at the New Jersey State Championship meet which was held at Rutgers University on Sunday, March 14. Michelle resides in South Plainfield and at-

tends the middle school, where she is in the seventh grade. Corinne is in eighth grade at the John Adams Middle School in North Edison.

Both girls train and compete on the La Gymnastique Club team at the Henderson Gymnastics Academy in North Edison. They are coached by Mark and Ann Marie Henderson.



SPHS Junior Shawn Ferguson averaged 174.5 for 86 games. He rolled a high game of 256 in the Bishop Ahr Holiday Classic and crushed the pocket for a 643 high set in the season's finale against Old Bridge. Sophomore Beverly Jamieson averaged 153.6 for 99 games. She bowled her high game of 226 against Piscataway as the Lady Tigers shutout the Chiefs. In the Bishop Ahr Holiday Classic, her 550 high set enabled the Tigers to place sixth in a highly competitive field of 27 teams.



Women's Baseball League Recruiting

The East Coast Women's Baseball League will be holding a New Player Workout on Sunday, March 28 from 7:30-9:30 p.m. at Professional Baseball Instruction on Route 17 north in Saddle River. (For directions, go to www.baseballclinics.com).

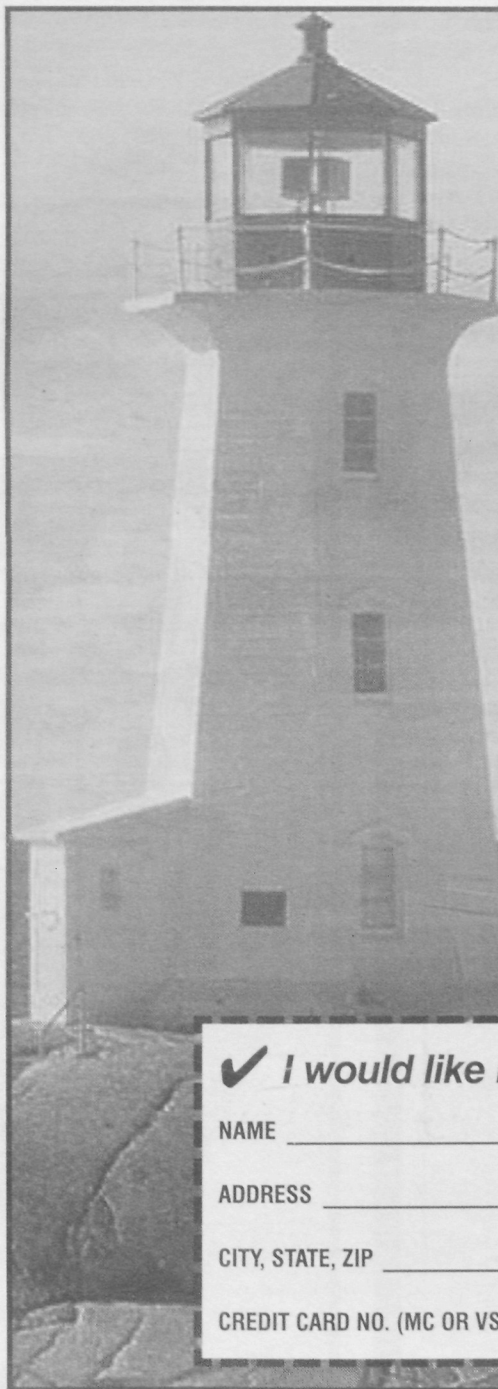
This will be an opportunity for women of all ages to play ball, be

entered in a draft and placed on a team! If you would like to attend, please register by emailing womensbaseball@hotmail.com or calling (201) 825-1534 with your full name, phone number and positions played.

The 2004 season begins Sunday, April 25th and includes 20 regular season games, an All-Star game in a

minor league stadium, Playoffs, best-of-three Championship Series. Players hail from all over New Jersey, New York, Pennsylvania, Connecticut and Delaware.

For more information on the league, please visit www.scorebook.com/womensbaseball or call (201) 825-1534.



Find Your Way.

Follow the ups and downs of the borough in the Observer, an independent newspaper for the residents and businesses of South Plainfield exclusively.

Send a check or money order for \$25/one year (out-of-town-\$30) to: South Plainfield Observer, 1110 Hamilton Blvd., Suite 1B, South Plainfield, NJ 07080, or call 908-668-0010 to pay by credit card.

We now accept VISA and Mastercard

✓ **I would like home delivery of the Observer.**

NAME _____

ADDRESS _____

CITY, STATE, ZIP _____ PHONE _____

CREDIT CARD NO. (MC OR VS) _____ EXP. DATE _____

Thinking about it...
Give me a call.

REAL ESTATE
Buying? Selling?

Local, East Coast, West Coast, or Any State

Deal with Licensed Experienced People!!

• NO OBLIGATION •

WAYNE GRENNIER, REFERRAL SPECIALIST

Weichert
Referral Associates
CO. INC.

LICENSED SALES REPRESENTATIVE NJ
OFFICE: 800-937-6777
RESIDENCE: 908-755-3138
E-mail: wgrennie@ix.netcom.com

1625 STATE ROUTE 10
MORRIS PLAINS, NJ 07950



"A COMPANY
ON THE MOVE"



Almost Famous Players Coffeehouse Benefit to Feature Local Talent



Katie Mott,
Almost Famous Players, the theater troupe that brought South Plainfield the Putnam Park Haunted Woods Tour is gearing up for Halloween 2004. On March 27 at the PAL they will sponsor an evening Coffeehouse featuring the music of Justina, accompanied by Steve Ambielli. Also scheduled to appear are Abbie Falato and other SP talent including Katie Mott, Dave Garatino, Chris Abbott and Joe Rodrigez. The music is sure to please people of all ages. A PAL card is not needed to attend the show.

The Coffeehouse runs from 7-10 p.m. Tickets are \$5, Tiger gold card and SPHS Gold card holders pay \$4 and \$3 for those 11 and under. Tickets can be purchased in advance and tables reserved for groups of 6 or more. They can also be purchased at the door. Refreshments including coffee, tea, cold beverages, baked goods,

hot dogs and pizza will be sold. Proceeds will benefit Almost Famous Players helping the group purchase materials for sets and costumes for their second annual Haunted Halloween show for tickets see any of the



Joe Rodrigez
performers or call (908) 756-8011, leave a message.

Almost Famous Coffeehouse performers are all experienced performers with strong backgrounds in music and performing heading the show is 20 year old **Justina Carubia** a 2001 graduate of SPHS. She grew up listening to her parents play their old records and her father play his guitar. She loved to perform but was too shy to sing in public. Ensemble roles in high school musicals and Summer Drama Workshop helped her conquer her fears. Wanting to show off her

vocal skills and her ability to write, she picked up the guitar at the age of 18 and taught herself how to play. Justina writes all her own tunes on acoustic guitar and delivers her strong vocals from the heart. With emphasis is on melody and personal lyrics, her music has a hip, cutting edge, soulful approach. Justina works with an airtight band of seasoned musicians. Her Influences include The Beatles, Fleetwood Mac, Eric Clapton, Pat Benatar, Jewel, Sheryl Crow,



Justina Carubia
Michelle Branch, and many others. For more info on Justina, visit her site www.Justinasworld.com and her fansite www.Justinasworld.net

Abbalonia Angelica Falato, also known as Abbie, is a 2003 graduate of SPHS. Music has always been a part of her life. Her parents both musicians, exposed her to a wide va-

riety of music from an early age. She began playing guitar and bass when she was 12 and has been writing songs since she was 11 years old. She plays bass, guitar, piano and sings her original songs on her demo CD entitled "Abbalonia." She is currently working on a full length CD that is due out sometime in 2004.

Steve Ambielli, Justina's accompanist, graduated from TCNJ in 2003 and SPHS in 1999. His interest in music began early, at just seven years old he began to play the organ. He also plays piano, he took lessons for 11 years. In high school his love of music continued. He was involved with the chorus, band, and the drama



Chris Abbott
workshops. After entering college he started composing his own music which gave him the opportunity to learn even more about music theory. Justina and Steve met while working with the Summer Drama Workshop. Shortly after graduating college, they would get together, play music, and record songs for the fun of it. Eventually Justina asked him to be her keyboardist. Steve said he is honored to be playing with such a talented young woman.

Chris Abbott, a SPHS senior has been performing since age five. He



Abbalonia Angelica Falato,
has been a member of the school chorus and band since third grade. He plays sax and recently took up acoustic guitar and bass. He is currently a member of the Jades as well as traveling and concert choir. He sang with the NJ Renaissance Kingdom's Revelers for several years as well as performing in many shows with the NJRK. He is a 10 year member of



Dave Garatino
Summer Drama Workshop, a member of *Almost Famous Players* and has appeared with SPHS Players, Triumverate Productions, Haunted Village of Somerset, Playhouse 22 and more.

Local United Way Looks to Invigorate Campaign

United Way's South Plainfield Community Council is calling upon local residents to help support the organization's current 2003-2004 campaign. To date, \$13,700 has been generated from local individual and business donations. United Way hopes to raise more than \$20,000 to shatter last year's 02-03 campaign that raised \$16,400.

United Way's South Plainfield Community Council supports vital programs that improve the lives of local children and youth, people with disabilities, seniors and families in crisis. During the past year in our community:

- A troubled teenage boy overcame depression, improved his grades in school, and began working a part-time job to help save for college tuition.
 - A single mother escaped domestic violence, became self-sufficient and now supports herself and her children.
 - An elderly man continues to live in his home and maintain his independence while he receives health care visits.
- United Way's local certified agencies helping to produce these amazing results include American Red Cross-Tri-County Chapter, Assn. for Retarded Citizens, Boy Scouts-

Patriot's Path Council, Cerebral Palsy Association, CONTACT We Care, Inc., Girl Scouts of Washington Rock Council, Inc., Jewish Community Center of Central NJ, King's Daughters Day School, United Family & Children's Society, USO of Metropolitan NY, Visiting Nurse & Health Services, YMCA of Plainfield and YWCA of Plainfield/North Plainfield.

Send tax-deductible donations to United Way, 33 W. Grand St., Elizabeth, NJ 07202. For more information, please call (908) 353-7171 or visit online at www.uwgu.org.

Corrections

- Last week's article, "Middle School Boys' Basketball Team Finishes Season at 20-5..." neglected to include team member Teddy Skwiat.
- Last week's article, "VFW Announces Voice of Democracy Winner," incorrectly listed Ashley Ritchey as a third place winner. Ritchey was a second place winner.

Free High Blood Pressure Program

The YWCA of Central New Jersey, 232 East Front St., Plainfield, is offering a free program to women ages 25 years and over with high blood pressure. Participants will receive free fitness assessments, a customized exercise program, access to workshops and a free six-month membership at the YWCA Health & Fitness Center. The YWCA is offering this program through a grant obtained from RYKA and the Women's Sports Foundation.

The YWCA offers a co-ed, state-of-the-art health & fitness center featuring cardiovascular and strength training equipment, a pool, sauna, group fitness classes, nutrition, massage, personal training, swimming lessons and Mommy and Me. Fitness evaluations, customized exercise programs and free instructional sessions are included with membership.

For more information, please contact Cathleen Ludlow at (908) 756-3500 ext. 120.

Log on to the

**Borough of South Plainfield's
official web site at
southplainfieldnj.com**

Visit your community web site for the latest local news on

- Mayor and Council
- Planning Board & Board of Adjustment Agendas
- Police - Fire - Rescue Squad
- Recreation
- Youth Activities • Senior Corner
- Professional & Business Directory
- Civic Organizations
- Election Results and more

Advertise your business and support on
South Plainfield's own web site
For rates or information email at:
southplainfieldnj.com
Or call 908-226-7656

Deadline to reserve
space is March 22!!

Get in the Spotlight!

Advertise in the April 2 issue of the *Observer*,
and you'll be exposed to 21,000 people.

(We're mailing the April 2 issue to
every home in South Plainfield)

Call 908-668-0010

LEGAL NOTICES

BOROUGH OF SOUTH PLAINFIELD
MIDDLESEX COUNTY, NEW JERSEY
ORDINANCE NO.1654
BE IT RESOLVED BY THE GOVERNING BODY OF THE BOROUGH OF SOUTH PLAINFIELD, MIDDLESEX COUNTY, NEW JERSEY, THAT:

Ord. #1654 entitled: AN ORDINANCE AMENDING CHAPTER 157 OF THE CODE OF THE BOROUGH OF SOUTH PLAINFIELD ENTITLED "SEWERS" was adopted on first reading and advertised in The Observer on Friday, March 19, 2004 and that a public hearing be held on Monday, March 29, 2004 at 7:00 p.m. in the Municipal Building, South Plainfield, New Jersey 07080.

ORDINANCE NO. 1654
AN ORDINANCE AMENDING CHAPTER 157 OF THE CODE OF THE BOROUGH OF SOUTH PLAINFIELD ENTITLED SEWERS

March 16, 2004		
§ 157-1	SEWERS Chapter 157	§ 157-1
		Page
§ 157-1. Operation of sewers as publicly owned utility		11
Definitions		11
§ 157-2. Revenues from operation.		11
§ 157-3. Charges, fees, rents and connection regulations.		11
A. General Regulations		11
B. Service Connection		11
C. Size and kind of service connections		11
D. Property served by single service connection		12
E. Maintenance by owner and connection fees		12
F. Annual sewer rentals		12
(1) General		12
(2) Residential structures		12
(3) Commercial establishments		12
(4) Industrial establishments		12
(5) Prohibited wastes		12
(6) Treatment requirements		12
(7) Control meter and sampling manhole		12
(8) Waste meters and waste samplers		12
(9) Prohibited connections		12
§ 157-4. New rates and charges supersede prior schedule.		13
§ 157-5. Bills to be rendered quarterly.		13
§ 157-6. Lien for rents and charges.		13
§ 157.7. Connections to available sewers required.		13
§ 157-8. Alterations or repairs.		13
§ 157-9. Prohibited connections.		13
§ 157-10. Violations and penalties.		13
§ 157-11. Submission of Non-Domestic User Information.		13
§ 157-12. Monitoring Reports		13
Schedule A – Annual Sewer Rentals		13

[HISTORY: Adopted by the Mayor and Council of the Borough of South Plainfield 1-25-66 as Ord. No. 436.]

GENERAL REFERENCES

Swimming pools - See Ch. 175.

§ 157-1. Operation of sewers as publicly owned utility.

The system of sanitary sewers, trunk or intercepting sewer or sewers, sanitary sewer works, sanitary sewer outlets, siphons, sanitary sewage disposal works, pumping stations and all improvements purchased by the Borough of South Plainfield from the South Plainfield Sewerage Authority, together with similar facilities and improvements constructed and owned by the Borough of South Plainfield or which may hereafter be constructed by the Borough of South Plainfield, shall hereafter be operated, maintained, managed and controlled by said Borough as a publicly owned or operated utility or enterprise of said Borough within the meaning and for the purposes of the Local Bond Law, N.J.S.A. 40A:2-1 et seq., and the Local Budget Law, N.J.S.A. 40A:4-1, and all amendments thereof and all other provisions of other laws applicable.

The Borough maintains the right to visit, inspect and obtain information regarding the operation and type of discharge, on an as needed basis, for the protection and maintenance of the Borough's sewer system. The users of the system shall provide the Borough complete and unrestricted access to the collection system. Sewer users shall be required to submit data, which the Borough determines it requires, for servicing and maintaining the Borough's sewer system.

Definitions:

Building Connection shall mean the sewer line extended from a building to the property line and connecting with the service connection.

Service Connection shall mean the sewer line extended from the property line to the main in the street.

Sewerage System shall mean the sanitary sewerage system of the Borough of South Plainfield which transmits sewage to the Plainfield Area Regional Sewerage Authority for treatment by the Middlesex County Utilities Authority Treatment Plant.

BOD (denoting "biocchemical oxygen demand") shall mean the quantity of oxygen utilized in the biochemical oxidation of organic matter under standard laboratory procedure in five (5) days at twenty degrees Centigrade (20°C), expressed in milligrams per liter in accordance with approved test procedures as defined in 40 CFR Part 136.

Buildings shall mean structures of all types, whether enclosed or not, such as sheds, pits, platforms, etc., which are connected, directly or indirectly, to the Borough sewer lines.

Building Drain shall mean that part of the lowest horizontal piping of a drainage system which receives the discharge from soil, waste and other drainage pipes inside the walls of the building and convey it to the building sewer, beginning five feet (one and five tenths (1.5) meters) outside the inner face of the building wall.

Building Sewer shall mean the extension from the building drain to the public sewer or other place of disposal.

Categorical Industrial User shall mean a user subject to Categorical Pretreatment Standards in accordance with EPA General Pretreatment Standards (40 CFR Part 403).

Categorical Pretreatment Standard or Categorical Standard shall be any regulation containing pollutant discharge limits promulgated by USEPA in accordance with Section 307 (b) and (c) of the Act (33 U.S.C. 1317) which apply to a specific category of users which appear in 40 CFR Chapter I, Subchapter N, Parts 405-471.

Chlorine Demand shall mean the quantity of chlorine absorbed by wastewater in a given length of time to a specific residual concentration, expressed in milligrams per liter and performed in accordance with an approved test procedure as defined in 40 CFR Part 136.

Composite Sample shall be a sample consisting of several sewage portions collected during a specific time period and combined to make representative sample.

Domestic Waste shall be any liquid waste containing animal or vegetable matter in suspension or solution of the water carried wastes resulting from the discharge of water closets, laundry tubs, washing machines, sinks, dishwashers, or any other source of water-carried waste of human origin or containing putrescible material.

Dwelling Unit shall mean residential space designated for more or less permanent occupancy by a family, an individual or group of individuals maintaining a household with cooking facilities.

Effluent Limitation shall be any restriction on quantity, rates and concentration of chemical, physical, thermal, biological and other constituents of pollutants established by permit, approval or imposed as an interim enforcement limit pursuant to an administrative order, including an administrative consent order.

Floatable Oil shall be oil, fat or grease in a physical state such that it will separate by gravity from wastewater by treatment in an approved pretreatment facility.

Garbage shall mean solid wastes from the domestic and commercial preparation, cooking and dispensing of food and from handling, storage and sale of produce.

Grab Sample shall be a sample which is taken from a wastestream without regard to the flow in the wastestream and over a period of time not to exceed 15 minutes.

Hazardous Pollutant shall be:

- Any toxic pollutant;
- Any substance regulated as a pesticide under the Federal Insecticide, Fungicide and Rodenticide Act, Pub. L. 92-516 (& U.S.C. 136 et seq.);
- Any substance that the use or manufacture of which is prohibited under the federal Toxic Substance Control Act, Pub. L. 94-469 (15 U.S.C. 2601 et seq.);
- Any substance identified as a known carcinogen by the International Agency for Research on Cancer;
- Any hazardous waste as designated pursuant to section 3 of P.L. 1981, c. 279 (c. 13:1E-51) or the "Resource Conservation and Recovery Act," Pub. L. 94-580 (42 U.S.C. 6901 et seq.); and,
- Any hazardous substance as defined pursuant to section 3 of P.L. 1976, c. 141 (c.58:10-23.11b).

Industrial User shall mean any user who discharges, causes or permits the direct or indirect discharge of non-domestic wastewater into the treatment works. All non-domestic wastes discharged by an industrial user shall be considered industrial wastes.

Industry shall be any establishment whose manufacturing process is included in the Standard Industrial Classification (SIC) codes.

Instantaneous Maximum Allowable Discharge Limit shall be the maximum concentration of a pollutant allowed to be discharged at any time, determined from the analysis of any discrete or composite sample collected, independent of the industrial flow rate and the duration of the sampling event.

Local Limit shall be where specific prohibitions or limits on pollutants or pollutant parameters are developed by the Middlesex County Utilities Authority in accordance with 40 CFR 403.5(c), such limits shall be deemed Pretreatment Standards for the purposes of Section 307(d) of the Act.

May is permissive; shall is mandatory.

MCUA shall be the Middlesex County Utilities Authority.

Medical Wastes shall be isolation wastes, infectious agents, human blood and blood products, pathological wastes, sharps, body parts, contaminated bedding, surgical wastes, potentially contaminate laboratory wastes and dialysis wastes.

Non-Contact Cooling Water shall be water used for cooling which does not come into direct contact with any raw material.

PARSA shall be the Plainfield Area Regional Sewerage Authority.

pH shall mean the logarithm of the reciprocal of the weight of hydrogen ions in grams per liter of solution. Solutions with a pH greater than 7 are said to be basic; solutions with a pH less than 7 are said to be acidic; pH equal to 7 is considered neutral. Analysis shall be performed in accordance with an approved test procedure.

Pollutant shall be any dredged spoil, solid waste, incinerator residue, filter backwash, sewage, garbage, refuse oil, grease, sewage sludge, septage, munitions, medical wastes, chemical wastes, biological materials, radioactive substance, thermal waste, wrecked or discarded equipment, rock, sand, cellar dirt and industrial, municipal or agricultural waste or other residue discharged into the sanitary sewer. This definition shall also include holding tank waste.

Pretreatment shall be the reduction of the amount of pollutants, the elimination of pollutants, or the alteration of the nature of pollutant properties in wastewater prior to, or in lieu of, introducing such pollutants into the Publicly Owned Treatment Works. This reduction or alteration can be obtained by physical, chemical and/or biological processes; process changes; or by other means, except by diluting the concentration of the pollutants unless allowed by an applicable pretreatment standard.

Pretreatment Requirements shall be any substantive or procedural requirement related to pretreatment imposed on a user, other than a pretreatment standard.

Pretreatment Standard shall be all applicable Federal, State and local rules and regulations implementing Section 307 of the Clean Waste Act of 1977 (33 U.S.C. 1251 et seq.) or N.J.S.A. 58:11-49, as well as any local requirements the Borough deems necessary. In cases of conflicting standards or regulations, the more stringent thereof shall be applied.

Properly Shredded Garbage shall mean the wastes from the preparation, cooking and dispensing of food that have been shredded to such a degree that all particles will be carried freely under the flow conditions normally prevailing in public sewers, with no particle greater than 1/2" (1/27 centimeters) in any dimension.

Public Sewer shall mean a sewer in which all owners of abutting properties have equal rights and which is controlled by public authority.

Sanitary Sewer shall mean a sewer which carries sewage and to which storm, surface and ground waters are not intentionally admitted.

Self-Monitoring Report shall be the standard Middlesex County Utilities Authority's form, including any subsequent additions, revisions, modification and replacements, for the reporting of self-monitoring results by permittees pursuant to their Non-Domestic Wastewater Discharge Permit.

Septage shall be the combination of liquid and solid residues resulting from the treatment of waterborne domestic waste in an individual subsurface sewage disposal system.

Septage Tank Waste shall be any waste from holding tanks such as vessels, chemical toilets, campers, trailers and septic tanks.

Serious Violation shall be an exceedances of an effluent limitation for a discharge point source set forth in a Non-Domestic Wastewater Discharge Permit approval, administrative order or administrative consent agreement, including interim enforcement limits, by 20% or more for a hazardous pollutant, or by 40% or more for a non-hazardous pollutant for which the effluent limitation is expressed as a monthly average or, in the case of an effluent limitation expressed as a daily maximum and without a monthly average, on the basis of the monthly average of all maximum daily test results for that pollutant in any month, in the case of an effluent limitation for a pollutant that is not measured by mass or concentration the MCUA shall prescribe an equivalent exceedances factor therefore. The Borough may utilize, on a case-by-case basis, a more stringent factor of exceedances to determine a serious violation if the MCUA states the specific reasons therefore which may include the potential for harm to human health or the environment. "Serious violation" shall not include a violation of a non-domestic wastewater discharge permit limitation for color.

Sewerage shall mean a combination of the water-carried wastes from residences, business buildings, institutions and industrial establishments, together with such ground, surface and storm waters as may be present.

Sewerage Works shall mean all facilities for collecting, pumping, treating and disposing of sewage.

Sewer shall mean a pipe or conduit for carrying sewage.

Significant Industrial User shall be:

- A user subject to categorical pretreatment standards; or
- A non-domestic user that meets any of the following criteria:
 - Discharges an average of 25,000 gallons per day or more of process wastewater to the MCUA's Publicly Owned Treatment Works (excluding sanitary, non-contact cooling and boiler blowdown wastewater); or
 - The amount of BOD, COD or Suspended Solids (TSS) in the discharge exceeds the mass equivalent of 25,000 gallons per day of domestic waste as per the following table:

Parameters	Flow (MGD)	Concentration (mg/L)	Loading per Day	
			(Kg)	(lb)
BOD (5-day)	0.025	200		41.7
COD	0.025	500	47.3	104.3
TSS	0.025	250	23.7	52.2
 - The volume exceeds 5% of the average daily flow of PARSA's or MCUA's Trunk System, or
 - The discharge contributes 5% or more of the mass loading of any EPA established priority pollutant; or
 - Is designated as such by the MCUA on the basis that it has a reasonable potential for adversely affecting its Publicly Owned Treatment Works operation or for violating any pretreatment standard or requirement.
- Upon finding that a user meeting the criteria in Subsection (2) of this definition has no reasonable potential for adversely affecting the MCUA's Publicly Owned Treatment Works operation or for violating any pretreatment standard or requirement, the Borough may, at any time, on its own initiative or in response to a petition received from a user and in accordance with procedures in 40 CFR 403.8(f)(6) determine that such user should not be considered a significant industrial user.

Significant Non-Compliance shall be:

- Federal Criteria - 40 CFR Part 403.8(f)(2)(vii)
 - Chronic violation of wastewater discharge limits, defined here as those in which 66% or more of wastewater measurements taken during a six month period exceed the daily maximum limit or average limit for the same pollutant parameter by any amount;
 - Technical Review Criteria violations, defined here as those in which 33% or more of wastewater measurements taken for each pollutant parameter during a six month period equals or exceeds the product of the daily maximum limit or the average limit multiplied by the applicable criteria (1.4 for BOD, TSS, fats, oils and grease and 1.2 for all other pollutants except pH).
 - Any other discharge violation that the Borough believes has caused, either alone or in combination with other discharges, interference or pass-through, including endangering the health, safety or welfare of its, PARSA's or MCUA's Publicly Owned Treatment Works personnel or the general public.
 - Any discharge of pollutants that has caused imminent endangerment to the public or to the environment, or has resulted in the Borough's exercise of its emergency authority to halt or prevent such discharge;
 - Failure to meet, within 90 days of the scheduled date, a compliance schedule milestone contained in a Non-Domestic Wastewater Discharge Permit or enforcement order for starting construction, completing construction, or attaining final compliance;
 - Failure to provide within 30 days after the due date, any required reports, including baseline monitoring reports, reports on compliance with categorical pretreatment standard deadlines, periodic self-monitoring reports, and reports on compliance with compliance schedules;
 - Failure to accurately report noncompliance; or
 - Any other violation(s) which the MCUA determines will adversely affect the operation

- or implementation of the local pretreatment program.
- State Criteria (N.J.A.C. 7:14-B.2)
 - Any user who commits a serious violation for the same hazardous pollutant or the same non-hazardous pollutant, at the same discharge point source, in any two months of any six month period;
 - Any user who exceeds the monthly average or, in a case of a pollutant for which no monthly average has been established, the monthly average of the daily maximums for an effluent limitation for the same pollutant at the same discharge point source by any amount in any four months of any six month period; or
 - Failure to submit a completed discharge monitoring report in any two months of any six month period.

Significant Non-Complier shall be a user who is in significant non-compliance with either the Federal Criteria or the State Criteria for Significant Non-Compliance. The Borough may utilize, on a case-by-case basis, a more stringent frequency or factor of exceedances to determine a significant non-complier if the Borough states the specific reasons therefore which may include the potential for harm to human health or the environment.

Slug shall mean any discharge of water, sewage or industrial waste which in concentration of any given constituent or in quantity of flow, exceeds, or any period of duration longer than 15 minutes, more than five (5) times the average 24 hour concentration of flow during normal operation.

Suspended Solids shall mean solids that either float on the surface of or are in suspension in water, sewage or other liquids and which are removed by laboratory filtering.

§ 157-2. Revenues from operation.

All moneys and revenues derived from the operation of the sewer system shall be kept in a separate fund designated "Borough of South Plainfield Sewer Utility Operating Account" and shall be applied and accounted for in accordance with said Local Budget Law and N.J.S.A.40:63-30, as follows:

- Payment of interest on any indebtedness incurred in purchasing the system.
- Payment of any installment or partial payment of any indebtedness, which is due or payable.
- Operating expenses, including necessary extensions.
- General municipal purposes.

§ 15 7-3. Charges, fees, rents and connection regulations.

The following charges, sewer system fees, rents and regulations for connections with and the use and services of the sewer system are hereby fixed and prescribed for each building or structure or group of buildings or structures which may have a connection with the sewer system (herein called "the premises"), and the Borough shall charge the same to the owner and bill the owner in accordance with § 157-5 of the Code of the Borough of South Plainfield.

A. General regulations.

- The Borough reserves the right for cause to refuse any request for permission to connect to the sewer system, to compel discontinuance of the use of any sewer or to compel the pretreatment of industrial wastes by any industry to prevent harmful discharges to the sewer system in any respect.
- Industries shall install fine screens to prevent the entry of any materials considered by the Borough to overload, impair the efficiency of or cause difficulties in the operation of sewers, pumping stations or meters.
- The Borough reserves the right to require industries having large volumes of waste discharge or their process discharges batches into the sewer to install meters, totalizers and recorders to record flows and, in addition, any suitable regulating device for equalizing the rate of discharge. In addition, the Borough reserves the right to require sewer users to install flow sampling facilities suitable for the collection of flow-proportioned effluent samples.
- Any building used in whole or part as a dwelling, or which requires or uses sanitary sewerage disposal, now or hereafter, on any lot abutting the street in which a sanitary sewer line is now or hereafter constructed, shall be connected with such sewer line:
 - Existing building within 180 days after adoption of this ordinance;
 - New building prior to occupancy thereof; or
 - Buildings on a street in which a sanitary sewer line is hereafter constructed, within 180 days after the completion of the construction of such sewer line.
- Where there is a sanitary sewer main within 100 feet or less of a property it shall be unlawful to own, operate, maintain, use or permit the maintenance, operation or use of a cesspool, septic tank or outhouse.
- The Borough shall not be liable for stoppage of the sewer lines between the main sewer line and the building being served (lateral), nor for any damage resulting from the stoppage, nor will the Borough provide any labor or material to free, clear or remove the obstructions from the lateral system. All such work shall be the sole responsibility of the owner of the premises served.
- A vent shall be connected with the house lateral just inside the house trap.
- Whenever a connection has been legally made within a sewer main for the purpose of providing sewer service to a cellar, a backflow preventor shall be placed on the lateral connection, which backflow preventor shall be maintained solely by the owner of the premises served.
- No cellar drains of any kind shall be connected with the Borough's sanitary system.
- A separate and independent building sewer shall be provided for every building, except where one building stands at the rear of another on an interior lot and no private sewer is available or can be constructed to the rear building through an adjoining ally, court, yard or driveway, the building sewer from the front building may be extended to the rear and the whole considered as one building sewer.

- Whenever possible, the building sewer shall be brought to the building at an elevation below the basement floor. In all buildings in which any building sewer is too low to permit gravity flow to the public sewer, sanitary sewerage carried by such building sewer shall be lifted by an approved means and discharged to the building sewer.
- Grease Traps – All restaurants, garages, hotels, commercial or industrial establishments from which any wastewater containing fats, wax, grease or oils, whether emulsified or not, shall be equipped with grease traps. Calculations as to design size and layout shall be prepared and signed by a Professional Engineer licensed in the State of New Jersey and shall be submitted to the Borough Engineer and also to the Plumbing Inspector. All grease traps shall be so located as to provide ease of maintenance by personnel and or easy access for compliance inspections by the Borough and/or Plumbing Inspector. A location outside of the structure shall be provided unless otherwise specifically permitted.

B. Service connection.

- The Applicant or property owner, or their agent, shall be responsible for making the physical connection to the Borough's sanitary sewer main and for furnishing and installing the service connection from the Borough's sewer pipe to the structure, including the cleanout, which will be placed one foot inside the curbline. That portion of the service connection from the sanitary sewer main to and including the cleanout shall be inspected by, and at the convenience of, a representative of the Borough. Upon completion and acceptance, same becomes the property of the Borough, who will assume the responsibility for future maintenance thereof, excluding stoppages. That portion of the service connection from the cleanout to the structure shall be inspected by the Plumbing Inspector for the Borough. Upon completion and acceptance, said portion of the service connection shall be and shall remain the sole responsibility of the property owner, including removal of all stoppages.
- Each new service connections, in addition to other standard appurtenances, shall be equipped with a tee branch vertical inspection riser with watertight removable plug (cleanout), suitably protected and installed at or near the street right-of-way line or easement line where the service connections leaves the property, same to be used by the Borough for periodic inspection, measurement and/or sampling of flows emanating from the property. Owners of improved property currently connected to the sewer system may be required to install an inspection riser on their service connections and at their cost and expense when deemed necessary and ordered by the Borough.
- Service connections serving new industrial manufacturing facilities shall, in addition to other standard appurtenances, include the installation of a control manhole assembly in lieu of the aforementioned inspection riser and same shall be installed at an accessible location approved by the Borough. The Borough reserves the right to require the installation of a standard control manhole assembly at existing industrial and/or commercial establishments, at the cost and expense of the property owner, when deemed necessary and ordered by the Borough.

C. Size and kind of service connections.

- The Borough reserves the right to determine the size and kind of the service connections from the main to six (6) feet outside the existing or proposed edge of cartway or curbline or to the side line of any permanent sewer utility easement or right-of-way.
- The service connections from six (6) feet outside the existing or proposed edge of cartway or curbline or from the side line of any permanent sewer utility easement or right-of-way to the property shall be furnished, installed and maintained by the owner of the property; shall be laid in a straight line from the point of connection to the main, where the main is in a right-of-way, or from the end of the Borough constructed service connections, to the structure to be served; shall be at least four (4) feet below the surface of the ground when final grading of the property has been completed; and shall be inspected and approved by the Borough's inspector prior to backfilling the trench; otherwise, any construction not approved shall be

(Continued on next page)

LEGAL NOTICES

immediately removed and reconstructed in an approved manner.

D. Property served by single service connections.

A service connection from the curb or the main in a right-of-way to a property shall not serve more than one (1) property.

E. Maintenance by owner and connections fees.

(1) All connections, service connections and fixtures furnished by the owner shall be maintained by him in good order, and all piping and connections furnished and owned by the Borough and on the property of the owner shall be protected properly and cared for by the owner. All leaks in the service connections or any other pipe or fixture in or upon the premises served must be repaired immediately by the owner of the premises. The owner shall be responsible for notifying the Borough of the party engaged by said owner to do any maintenance work in the owner's service connections prior to work being commenced, and said party shall not backfill any trench until the work has been inspected and approved by the Borough's representative. Any work not acceptable shall be immediately removed and replaced by work which is acceptable.

(2) The Borough shall in no way be responsible for maintaining any portion of the service connections owned by the owner or for damage done by sewage escaping therefrom or for lines or fixtures on the owner's property; and the owner shall at all times comply with applicable municipal regulations with respect thereto and make changes therein required by reason of changes of grade, relocation of mains or otherwise.

(3) The Borough will not assume any responsibility for back-up or flooding of or caused by any fixture that is lower than 8 inches above the rim of the nearest manhole in the street.

(4) The Borough shall in no event be responsible for maintaining any portion of the service connection owned by the customer, or for damage done by water escaping therefrom; or from lines or fixtures on the customer's property; and the customer shall at all times comply with applicable municipal regulations with respect thereto.

(5) The owner shall obtain and pay for the required road opening permits, plumbing permits, and all other applicable regulations and conditions pertaining thereto.

(a) Hereafter, before any building sewer is connected to a lateral sewer, service connections or sewer main, the owner shall make application, in writing, on proper forms furnished for that purpose to the Borough and pay for every direct or indirect connection to the sanitary sewerage system of the Borough of South Plainfield or any part thereof. The following capacity rate/trunk connection charges are established at the following rates. When a developer is commencing construction on a new development or section of a development the connection fees for the entire section or development, if not sectionalized, shall be posted prior to the construction of the sanitary sewer extension or issuance of the first building permit, whichever occurs first. No permit shall be issued prior to the payment of the appropriate connection fee.

(i) Residential user: Two thousand dollars (\$2,000.) for each single family dwelling or unit.

(ii) All other users:

- Four thousand dollars (\$4,000.) for the first four hundred (400) gallons of estimated annual daily average flow, plus four thousand dollars (\$4,000.) for each additional four hundred (400) gallons of estimated annual average flow or major fraction thereof as determined by the Borough on the basis of the factors specified in N.J.S.A. 40:14A-8, the data and information made available to the Borough and the results of Borough investigation on meter reading studies.
- In cases where the annual daily average flow cannot be computed with certainty because the factors constituting the criteria for computing these charges have not yet been determined with certainty, the charges shall be determined on the basis of relevant information requested by and supplied to the Borough. After the first year of operation, so that the annual daily flow can be established with certainty, the connection fee shall be adjusted to reflect that use. In no event shall the connection fee for stores, shopping centers and office buildings be calculated on less than one tenth (0.1) gallons per day per square foot of occupancy.

F. Annual sewer rentals.

(1) General.

(a) Sewer rentals shall be calculated annually and the cost of service distributed among users in proportion to each user's or user class's of sewage contribution to the system based upon flow, biological oxygen demand (BOD), suspended solids and chlorine demand. The Borough shall establish the formulas by which all costs associated with operating the sewer utility shall be recovered from each user classification. An appropriate factor to distribute the cost of infiltration and inflow into the system and flow from other extraneous sources on a flow proportioned basis will be applied to all users. Any surplus or deficit in the revenues charged to a user or user class shall be adjusted in the charges to the respective user or user class in subsequent billing periods.

(b) Annual sewer rentals shall commence as of the date connection is made to the sewer system. Owners of property connected during a calendar month shall pay a prorated charge for service for the balance of the quarter. Sewer rentals shall be paid quarterly and in accordance with the following classifications as contained herein. Rates shall be in accordance with Schedule A, Annual Sewer Rentals, which rates shall apply to existing system connections.

(c) At least once each year the Borough shall review and revise, as necessary, sewer use and sewer user charges and shall establish charges by user class, flow, biological oxygen demand, suspended solids, chlorine demand and other criteria listed in Schedule A, as the governing body shall deem appropriate. Any charges so established shall, at a minimum, provide for the equitable distribution of Plainfield Area Regional Sewerage Authority and Middlesex County Utilities Authority operation and maintenance charges applicable to the Borough, infiltration and inflow to the system and Borough operation and maintenance charges and debt service.

(d) Each user shall be notified, at least annually, with a regular bill or a separate written notice, of the rate and charges for wastewater treatment representing operation and maintenance costs of the Plainfield Area Regional Sewerage Authority and Middlesex County Utilities Authority.

(e) Any flows or strengths, which are not attributable to a specific user, whether by reason of the user's being exempted from charges or by reason of the flow entering the system by infiltration or inflow, shall be charged to all users proportionately on the basis of flow.

(f) The sewer user shall be responsible for inspecting the meter daily to confirm that the meter, totalizer, and recorder are recording the facility's wastewater flows. The user shall be further required to notify the Borough of any failure of the meter, totalizer, and/or the recorder, within one day of failure and the action being taken by the user to correct the problem. A penalty shall be imposed of up to \$1,000 per day for the period during which the meter is not operating, which has not been reported to the Borough. The User shall be required to submit the flow data to the Borough on a monthly basis. A penalty shall be imposed of up to \$1,000 per day for the period the flow records are not furnished to the Borough. The sewer meters shall be calibrated yearly, and certified copies of calibration shall be provided to the Borough. A penalty shall be imposed of up to \$1,000 per day for the period the certification records are not furnished to the Borough. The quantity recorded by the meter shall be conclusive on both the user and the Borough, except when the meter has been found to be registering inaccurately or has ceased to register. In such cases, the quantity shall be determined by the average registered for the four (4) preceding billing quarters of the meter when in proper working order.

(2) Residential structures.

(2A) Each individual dwelling unit shall comprise a service unit; each dwelling unit in a multi-family house, each dwelling unit in a row of connecting houses and each dwelling unit in an apartment or multi-family building or series of buildings shall be billed as a separate unit and shall comprise a service unit. Any room, group of rooms or house trailer or enclosure occupied or intended for occupancy as separate living quarters by a family or other group of persons living together or by a person living alone shall be classified as a service unit. Residential establishments shall be charged a standard flat rate regardless of water usage as an annual sewer rental fee as established in Schedule A, payable in quarterly amounts. Residential sewage shall be considered as having the following pollutant constituents:

Five (5) day Biochemical Oxygen Demand (BOD) of two hundred twenty (220) MG/L.

Suspended solids content (SS) of two hundred twenty (220) MG/L.

Chlorine Demand (CD) of fifteen (15) MG/L.

(2B) Residential structures reduced rate: All recipients of the two hundred fifty dollar (\$250.) real property tax deduction granted in accordance with the provisions of P.L. 1963, C. 172 (R.S. 54:4-B.41) shall be given a deduction in the sewer rental rate that will result in a net annual rate not exceeding one-half of the then current residential rate.

(3) Commercial establishments.

(3A) Each individual commercial establishment shall comprise a service unit; each commercial unit in a commercial complex shall be billed as a separate unit and shall comprise an individual service unit.

(3B) Commercial establishments shall be divided into the following subcategories:

(3B1) Class 1 - Hotels, Motels, Nursing homes, and retirement homes.

(3B2) Class 2 - Bagel Shops, Bars and Grills, Bakeries, Butchers, Country Clubs,

Delicatessens, Diners, Doughnut Shops, Ice Cream Shops, Luncheonettes, Restaurants, Social Clubs, Meat Markets and Supermarkets.

(3B3) Class 3 - Fast Food Restaurants.

(3B4) Class 4 - Barber Shops, Bars and Taverns (No Kitchen), Disposal, Food Markets, Laundromats, Manufacturing, Service Station (full repair only), Beauty Salons, Bowling alleys, Cleaners, Clinics, Day Care Center, Dental Practices, Funeral Parlors, General Construction, Golf Courses, Health Spas, Kennel, Orphanage, Pet Grooming, Pharmacy, Photograph Developing, Printing Shops, Religious Clubs, Rest Areas, Train Stations.

(3B5) Class 5 - Appliance Stores, Art Studios, Auto Retail Stores, Auto Repairs, Bookstores, Building Supplies, Bus Charter, Car Rental, Car Wash, Cemeteries, Churches, Cinemas, Clothing, Convenience Stores, Department Stores, Electrical Contractor, Electric Stores, Florists, Fruits and Vegetables, Furniture Stores, General Retail Stores, Glass Repairs, Grocery Stores, Hardware Stores, Hobby Stores, Heating/Air Conditioning, Home Furnishing, Jewelry Stores, Landscaping, Libraries, Limousine Service, Liquor Stores, Locksmiths, Lumberyards, Marina, Medical Supplies, Non-Education Schools, Paint Stores, Parks, Pest Control, Pet Supplies, Pool Supplies, Psychic/Tarot Cards, Reality Agencies, Rentals, Scrap/Junk Yards, Service Stations-Gas Only, Shoe Stores, Sporting Goods, Stationery Stores, Storage Lots, Tailor, Tank Farms, Tanning Salons, Televisions Repairs, Towing Service, Travel Agencies, Trucking, Video Rental, and Warehousing.

(3B6) Class 6 - Laboratories and Mini Medical.

(3B7) Class 7 - Accounts, Attorneys, Banking, Chiropractors, Consultants, Engineers, General Offices, Government-Other, Insurance, Opticians, and Post Office.

(3B8) Class 8 - Public and Religious Schools.

(3B9) Class 9 - Malls and Shopping Centers.

(3C) Each commercial establishment, whether located in a commercial or residential zone of the Borough, shall be charged on the basis of actual water consumption as provided by local water companies. Should the water consumption be below that which would produce a fee equal to the minimum annual commercial sewer user charge as established in Schedule A the user shall be required to pay the minimum commercial user fee.

(3D) Users consuming large quantities of water, which is not discharged into the sanitary sewer system for items such as irrigation, cooling tower water, product, etc. shall be required to install separate water company water meters and water distribution systems, with its own account numbers to be eligible to receive a deduction. Engineering drawings of the proposed system, prepared and signed by a Professional Engineer licensed in the State of New Jersey, shall be submitted to the Construction Code Official and the Borough Engineer's Office, to be reviewed, inspected and approved for operation.

(3E) The Borough shall have the right to enter and inspect any part of the premises served by public sewer upon which there may be reason to believe that a violation of the requirements of these regulations have occurred or are likely to occur, for the purpose of ascertaining the facts to such violations or suspected violation, or of obtaining samples of wastes, or of inspecting flow measuring devices or treatment facilities provided to prevent prohibited discharges or change in operation. The Borough reserves the right to charge any establishment where the quantities of waste and/or concentration of any pollutant exceed the standard concentrations above. In all cases where a commercial establishment contributes more than 25,000 gallons a day of sewage or a pollution load greater than that contained in 25,000 gallons per day [three thousand fifty (3,050) - one hundred (100) cubic feet/quarter] of standard commercial sewage as defined above, the establishment will be required to install metering and sampling facilities and be charged under the monitored industrial category as described below.

(4) Industrial Establishment Users.

(a) User charges. All establishments which require a non-Domestic Wastewater Discharge Permit issued in accordance with the procedures set forth in Middlesex County Utilities Authority's Industrial Pretreatment Program, in addition to other establishments as the Borough determined to be appropriate shall be charged as an Industrial Establishment Users.

(i) Monitored industrial user.

All users which contribute more than twenty-five thousand (25,000) gallons per day [three thousand fifty (3,050) - one hundred (100) cubic feet/quarter] or equivalent amounts of pollutant load based upon the standard domestic and commercial sewage concentrations [one and nine tenths (1.9) ton's BOD, two and three tenths (2.3) ton's suspended solids or two and three tenths (2.3) CWT chlorine demand/quarter] shall be charged in accordance with this section. In addition, any establishment within the Borough which discharges lesser amounts of sewage or pollutant load but in the opinion of the Borough is a significant contributor to the Borough system may be charged under this section. All establishments charged under this section shall maintain flow-monitoring equipment, which in the opinion of the Borough provides a true determination of the volume of sewage discharged during any billing period, unless a reliable system already exists and is agreed to by the Borough of South Plainfield.

Monitored industries shall also be required to install and maintain flow sampling facilities acceptable to the Borough and suitable for the collection of flow-proportioned effluent samples. Sampling frequency shall be established by the Borough and shall be appropriate for the individual industry, and may be revised as required by the Borough to accurately monitor the sewer user's discharge. The Borough shall have unhindered 24-hours per day, seven days per week access to metering and flow-sampling facilities.

The user shall install flow meters, flow recording totalizers and flow recorders to record the sewer flow rate in gallons. If the user's utilizes a batch process for discharge that renders flow recorders unreliable, the user shall implement an alternate method of recording flow amounts. The Borough must approve and agree to this alternate method prior to implementation. If the users process is a batch process, pumps or other approved flow control devices shall be installed by the user to control the flow being discharged to the Borough's sewer so as not to deliver "slugs". The flow recorder and the flow totalizer shall be installed in a lockable control panel located proximate to the flow sampling facilities, with access keys provided to the Borough.

Sewer users who have an Industrial Pretreatment Program Permit with the Middlesex County Utilities Authority shall be required to submit a copy of the periodic self-monitoring submittals to the Borough within fifteen (15) days of the required date of the submittal to the MCUA.

The Borough quarterly sewer user charge shall include the fee as established in Schedule A for the sample collection and laboratory analysis performed by the Borough. The user charge shall be based upon sewage flow plus an allowance for infiltration/inflow and actual pollutant load (BOD, suspended solids and chlorine demand) contributed based upon sample analysis. Said charge shall be payable quarterly.

(ii) Unmonitored industrial users.

[iia] Charges shall be based upon water consumption provided by records of local water companies within the Borough and/or meters on private water supplies and other appropriate data as necessary to accurately determine the sewage contribution of each user. Where facilities necessary to accurately determine water consumption are not available, the Borough may require the industry to install sewage- or water metering equipment or may use other methods to establish the sewage contribution of the user. The unmonitored industrial user may be required to provide and maintain flow sampling facilities acceptable to the Borough and suitable for the collection of flow-proportioned effluent samples. The Borough shall have unhindered twenty-four-hour-per-day, seven days per week access to metering and flow-sampling facilities. Flow meters installed shall include recording totalizers and recorders to record the flow rate in gallons. The flow recorder and the flow totalizer shall be installed in a lockable control panel located near the flow sampling facilities, with access keys provided to the Borough. The unmonitored industrial users shall be charged on a flow basis, which charge includes consideration for BOD, suspended solids and chlorine demand concentration. Pollutant load contributed by this user class shall be determined as the difference between the total pollutant load discharged by the Borough and that contributed by other user classes as established above.

[iib] Individual users within the industrial zone may request that the Borough charge them under the commercial establishment classification. A determination of such requests shall be based on information furnished to the Borough and/or collected by the Borough at the cost of the industry. Where an establishment in the industrial zone is strictly commercial in nature and can demonstrate that its sewage characteristics consistently fall below the standard concentrations established for commercial establishments, the Borough may reclassify the establishment. The Borough reserves the right to return the establishment to the unmonitored industrial classification if determined by the Borough to be appropriate.

(b) It will be the policy of the Borough to consider each application on its own merits and to establish specific conditions applicable to the particular situation.

(c) Prior to approving an application for a connection involving the acceptance of industrial wastes, the applicant shall submit complete data with respect to the following:

(i) Average, maximum and minimum rates of flow to be expected daily and seasonally.

(ii) Flow diagram showing points of applications of chemicals; type and quantity of each chemical used per day and per shift; a schedule of operations; expected

chemical characteristics of the untreated wastes; and the point or points of connection to the sewerage system. The normal situation will require the separation of and separate points of connection for domestic sewage and industrial wastes from each industrial establishment.

(5) Prohibited wastes. Waste streams, when at the time of introduction into the system, contain the following substances or possessing the characteristics listed below will not be accepted:

(a) Any vapors or steam.

(b) Any waste streams with temperature in excess of 120° F.

(c) Any waste streams which contain in excess of one hundred (100) parts per million of fat, oil, wax or grease, either vegetable or mineral or containing other substances which may solidify or become viscous at temperatures between thirty-two (32° F) and one hundred twenty (120° F) degrees Fahrenheit.

(d) Waste streams containing volatile, explosive or flammable substances such as benzene, gasoline, naphtha, fuel oil or other flammable or explosive liquid, solid or gas in sufficient concentration that may cause a flammable or explosive condition to occur within the sewer system. Users with the potential to discharge flammable substances may be required to install and maintain an approved combustible gas detection meter.

(e) Waste streams containing any solids or viscous matter which due to quantities or size is capable of causing obstructions to the flow of sewers or others interference with the proper operation of the sewerage works, such as, but not limited to ashes, cinders, sand, mud, straw, shavings, metal, glass, rags, feathers, tar, plastics, wood, unground garbage, whole blood, paunch manure, hair and fleshings, entrails and paper dishes, cups, milk containers etc. either whole or ground garbage grinders.

(f) Waste streams having a pH value less than five point five (5.5) or in excess of nine point zero (9.0) or possessing other properties capable of causing damage or hazard to sewers, structures, treatment process, equipment or operating personnel.

(g) Waste streams containing toxic or poisonous substances in sufficient concentration to interfere with the sewage treatment process, cause injury to animals or persons or to create an unacceptable condition in the receiving streams.

(h) Waste streams containing a noxious or malodorous gas or substance that causes a public nuisance.

(i) Waste streams having a flash point lower than two hundred thirty-five (235° F) degrees Fahrenheit as determined by the Tagliabue (Tag) close cup method.

(j) Any waste streams containing a toxic, poisonous or radioactive substance in sufficient quantity to injure or interfere with any sewage treatment process or to constitute a hazard to humans, animals or marine life, or create any hazard in the receiving waters. Radioactive wastes or materials may be discharged into a public sewer if Conditions I and II below are met and if either Condition III or IV is met, provided that such discharges are in compliance with applicable State or Federal regulations:

1. Condition I: Such wastes must be readily soluble or dispersible in water.
2. Condition II: The gross quantity of all radioactive materials so discharged must not exceed one (1) curie per year.
3. Condition III: The daily quantity of any radioactive material, if diluted by the average daily volume of sewage discharge into the system from the installation, must not exceed the maximum concentration allowed by regulations of the United States Nuclear Regulatory Commission.
4. Condition IV: Daily quantities of radioactive materials up to the maximum permitted by the United States Nuclear Regulatory Commission may be so discharged, provided that the total monthly quantities, if diluted by the average monthly volume of sewage discharged from the installation, do not exceed the concentration permissible under Condition III above.
5. Any waste streams containing sufficient quantities of noxious, malodorous or taste producing gas, vapor or substances, such as phenols, capable of creating a public or private nuisance, or which may prove toxic to the sewage treatment process, or which may exceed acceptable limits for discharge to receiving waters.

(k) Materials which exert or cause:

1. Unusual concentrations of inert suspended solids, such as but not limited to Fuller's earth, lime slurries and lime residues, or of dissolved solids, such as but not limited to sodium chloride and sodium sulfate.
2. Excessive discoloration, such as but not limited to dye wastes and vegetable tanning solutions.
3. Unusual BOD, suspended solids, chemical oxygen demand or chlorine requirements in such quantities as to constitute a significant load on the sewage treatment works.
4. Unusual volume of flow as concentration of wastes constituting "sludge".

(l) Waters or wastes containing substances which are not amenable to treatment or reduction by the sewerage treatment process employed, or which cause the treatment plant effluent to not meet the requirements of other agencies having jurisdiction over discharge to the receiving waters.

(m) Any waters or wastes containing strong acid iron pickling wastes or concentrated plating solutions, whether neutralized or not.

(n) Any wastes or waters containing iron, chromium, copper, zinc and similar objectionable or toxic substances or wastes exerting an excessive chlorine requirement to such degree that any such material received in the composite sewage at the sewerage treatment works exceeds the limits established by the MCUA for such materials.

(o) Any substances prohibited by Federal, State, County or municipal regulatory agency or governmental body including but not limited to the Federal Environmental Protection Agency, The New Jersey Department of Environmental Protection, the Middlesex County Utilities Authority, Plainfield Area Regional Sewerage Authority or the Borough, as set forth or determined by the rules, regulations or requirements of such regulatory agencies or bodies.

(6) Pretreatment Requirements.

(a) The Borough reserves the right to require preliminary treatment where the chemical characteristics of the proposed industrial wastes, in the opinion of the Borough or in the opinion of the State Health Department or the local Board of Health, make such preliminary treatment desirable or mandatory. Some of the characteristics that may dictate preliminary treatment are listed below:

- [1] Five-day BOD in excess of three hundred (300) parts per million.
- [2] Suspended solids in excess of two hundred fifty (250) parts per million.
- [3] Presence of arsenic, barium, cadmium, chloride, copper, cyanide, fluoride, iron, lead, magnesium, manganese, nickel, nitrate, selenium, sulfate, zinc or pH values outside the acceptable limits.

(b) In such instances where it is agreed that the industrial waste will be received following preliminary treatment, drawings and specifications shall be submitted for approval showing all pertinent details of the construction proposed to accomplish the treatment, to include details of the indicator-record-register type of fluid meter and housing to be used to meter the flow of industrial wastes, and also details of the control manhole to be constructed on the industrial waste connection line within the sidewalk area. The control manhole shall be provided with adequate access manhole covers of approved type through which access shall be possible to Borough personnel at all times. Drawings, specifications, reports, etc., shall be submitted in quadruplicate and shall be prepared by a registered professional engineer licensed in the State of New Jersey.

(c) Where preliminary treatment facilities are required, they shall be provided and continuously maintained in an effectively operating condition at all times, at the expense of the owner.

(d) Each owner that is connected to the Borough's sanitary sewer facilities shall be responsible for maintaining a quality of effluent from its premises which conforms to the provisions established in their agreement with the Borough. Sampling and analysis shall be done to conform to accepted practice and in accordance with the current edition of Standard Methods for Examination of Water, Sewage and Industrial Wastes published by the American Public Health Association.

(e) The cost of preparing and submitting this data for consideration by the Borough shall be borne by the industry; likewise, the cost of sampling and analysis to determine compliance with the terms of the agreement shall be borne by the owner although conducted by the Borough or its duly authorized representative as established in Schedule A.

(7) Control meter and sampling manhole.

Industries permitted to connect to the Borough sewers, even though not initially being required to provide preliminary treatment, may be required to provide a control manhole and/or flow meter as described herein.

(8) Waste meters and waste samplers.

(a) Where the owner provides its own water supply entirely separate from that supplied by the water utilities or provides from its own sources a portion of the water consumed on the premises, which eventually finds its way into the sewerage system of the Borough, all aforementioned provisions will apply. This does not relieve the owner from the requirement to furnish, install and maintain a flow meter of the indicator-register-record type to measure the discharge of industrial wastes as provided herein. All costs of furnishing, installing and maintaining the industrial waste flow meter will be borne by the owner.

(b) The Borough representative shall have access at reasonable times to industrial establishments and to any meters used to determine waste volumes discharged into the sewer system or excluded from the sewer system. Each user discharging industrial waste

(Continued on next page)

LEGAL NOTICES

- into the Borough's sewer system shall provide facilities and means whereby the waste being discharged may be inspected by designated employees of the Borough for the purpose of determining the character of its waste, its' concentration and its rate of flow. Sample collection fees and laboratory analysis fees performed by the Borough, shall be paid for by the sewer user as established in Schedule A..
- (9) Prohibited connections.
- (a) Under no circumstances will any of the following be connected to the sanitary sewers, directly or indirectly:
- [1] Floor drain, area drain or yard drain.
 - [2] Rain conductor or downspout.
 - [3] Grease pit.
 - [4] Air-conditioning equipment.
 - [5] Stormwater inlets or catch basins.
 - [6] Drains from a piece of equipment or manufacturing process, except when specifically authorized under the provisions of these rules and regulations.
 - [7] Basement or foundation drains.
- (b) No temporary connections shall be made to the sanitary sewers or manholes for the disposal of septage or any other material. Septage originating in the Borough shall be disposed of at the MCUA treatment plant or other facilities approved by the New Jersey Department of Environmental Protection. Fees shall be paid to the agency accepting the septage.

§ 157-4. New rates and charges supersede prior schedule.

The rates and charges fixed by the Mayor and Council of the Borough of South Plainfield shall be in lieu of and in substitution for any other sewer charges heretofore made by any other agency for such quarter or any succeeding period. Any new rates will take effect on bill dates beginning 4/1/04.

§ 157-5. Bills to be rendered quarterly.

Bills for said charges and rents shall be rendered to the owner of each commercial and industrial premises in advance of the quarterly due dates of March 1, June 1, September 1 and December 1. Bills for said charges and rents shall be rendered to owners of residential premises in advance of semiannual due dates of March 1 and September 1.

§ 157-6. Lien for rents and charges.

- A. Said charges and rents shall draw interest and be a lien upon the premises until paid, and the Borough shall have and exercise the remedies for the collection thereof with interest, costs and penalties provided in N.J.S.A. 40:63-8 and as it has by law for the collection of taxes upon real estate.
- B. The validity of said charges and rents or the time at which they are payable shall not be affected by the failure of the owner of the premises to receive a bill for said charges and rents, but every premises' owner affected by said charges and rents is put upon notice to ascertain from the Collector of Sewer Rents the amount which may be due for said charges and rents against the property.
- C. Penalty or discontinuance. In the event that any user fails to conform to these regulations or fails to comply with the terms and conditions of its agreement with the Borough, which failure causes damage of any sort to the Borough or its employees, the Borough shall determine the extent of the damage and bill the user accordingly. If such bill is not paid within five (5) calendar days from the date of the bill, legal action may be instituted to enforce collection, or the Borough may resort to termination of the connection after giving twenty-four (24) hours notice. The Borough reserves the right to cancel any sewer service agreement upon one (1) year's written notice in the event of repeated failure to comply with the terms of the agreement or the rules and regulations of the Borough.

§ 157-7. Connections to available sewers required.

- A. When such sewerage system along any such street, road or easement of the Borough is available for the acceptance of sewage, notice shall be given by the Borough to all property owners along the lines of the sewerage system, as aforesaid, to connect their facilities therewith in accordance with the terms of this section and Article. The notice shall be addressed to the owner of the property as the name of the owner appears on the last tax duplicate of the Borough, shall describe the property by lot and block designation as appears on the Tax Map of the Borough, and by the street address, and shall state under terms of this section that the owner is required to connect the building or buildings on the property with the sewerage system within that period set forth herein. The notice shall further inform the owner of the penalty which may be imposed for failure to comply with the notice in accordance with the terms of this section.
- B. The notice may be served on the owner personally or by leaving it at the usual place of abode with a member of his family above the age of eighteen (18) years if the owner has place of abode within the Borough, or the notice may be delivered within or without the limits of the Borough by mailing the same by regular mail to the last known post office address of the owner as the same appears on the last tax duplicate of the Borough.
- C. Failure of the owner of a facility to make any connection required by this section within six (6) months after service of the notice as set forth above, the Borough may proceed to make such connection or cause the same to be made and assess the cost thereof as a lien against such house or structure pursuant to and in accordance with the provisions of N.J.S.A. 40:63-52 through 40:63-64.
- D. Costs and expenses incident to the installation, connection and maintenance of the premises sewer shall be borne by the owner. The owner shall indemnify the Borough from any loss or damage that may directly or indirectly be occasioned by the installation of the building sewer. The cost of restoration of the pavement, sidewalk, curbs, gutters, landscaping and the like resulting from the making of such connection shall be borne by the owner connecting with the sewer.

§ 157-8. Alterations or repairs.

No alteration or repair to any part of the sewer system thereto shall be made, except by duly authorized representatives or employees of the Borough, without application for such having been made to the Borough and approved and except upon compliance with the rules and regulations of the Borough relating thereto.

§ 157-9. Prohibited connections.

No cesspool, privy vault, subsoil, foundation or cellar drains, rainwater or surface drains shall be connected with the sewer system or any part thereof. Only the sewerage system of the premises shall be so connected.

Sump pumps shall not be connected to the sanitary sewer. The Borough has the right to inspect premises and, if a sump pump connection is noted, require property owner(s) to remove said sump pump(s) connections and to impose a penalty in accordance with Violations and penalties listed in the following section.

§ 157-10. Violations and penalties.

Any person, firm or corporation violating these provisions or any succeeding ordinances or resolutions pertaining to this subject matter which might be enacted or adopted shall be punished by a fine not exceeding one thousand (\$1,000.00) dollars, or imprisonment for a period not to exceed 90 days or both. Each and every day that any violation continues shall be deemed to be and shall be a separate offense, separately punishable as aforesaid.

In addition to the above, in the event that the Borough is assessed a surcharge or penalty due in whole or in part to a sewer user's failure to comply with the rules and regulations of PARSA, MCUA, NJDEP, or other regulatory body, the user shall pay to the Borough an amount equal to 100-percent of such surcharge or penalty. If a surcharge or penalty results from the acts or omissions of more than one sewer user, payment shall be pro-rated as reasonably determined by the Borough. The Borough's right to collect the aforesaid payment shall be in addition to, and not in lieu of, other legal and equitable remedies which may be available to the Borough.

§ 157-11. Submission of Non-Domestic User Information

- A. All applications for certificate of use and applications for permission to discharge into the Borough's sewers or laterals tributary thereto, other than normal domestic sewage from toilets, baths, showers, wash bowls and sinks, shall be in writing duly verified and under oath and shall contain complete information for the facility as follows:
- 1. Equalizing or pretreatment facilities;
 - 2. Total daily flow in gallons. Data to be submitted monthly.
 - 3. Period of time during which the total daily flow is discharged (hours, of day, days per week);
 - 4. Peak flow rate to be submitted monthly.
 - 5. Wastewater characteristics and concentration including:
 - a. Suspended solids, total and volatile;
 - b. Dissolved solids, total and volatile;
 - c. Five-day BOD (Biochemical Oxygen Demand);
 - d. Chlorine Demand;
 - e. Temperature;
 - f. pH (hydrogen, ION Concentration);
 - g. Oil and grease;
 - h. Sulphides;
 - i. Free acidity;
 - j. Alkalinity, total and caustic;
 - k. Maximum size of solids; and
 - l. Data with respect to any chemical constituent.
- B. All users, both existing and proposed, except those that are already submitting to the MCUA, wishing to discharge Non-Domestic wastewater shall submit an application for a Non-Domestic User Permit. Said permit shall include Temporary Wastewater Discharge permits addressing environmental remediation, performed under the oversight of the New Jersey Department of Environmental Protection, at properties within the Borough. Users may be required to treat the ground water discharge prior to discharge into the wastewater collection system.
- C. Where pretreatment or equalization of wastewater flows are required prior to discharge into the sanitary sewer the user may be requested, by the Borough, to provide information associated with plans, specifications, operating procedures, types of pollutants, sampling location, sampling frequency, sampling type and any other pertinent information related to the discharge of materials into the sanitary system.

- D. Each user shall provide a plan for the protection from accidental discharges and from slug loads. Users shall complete such plan and submit same to the Borough, and include, at a minimum, the following:
- 1. Description of discharge practices, including non-routine batch discharges;
 - 2. Description of stored chemicals;
 - 3. Procedures for immediately notifying the Borough of any accidental or slug discharge; and
 - 4. Procedures to prevent adverse impact from any accidental or slug discharge. Such procedures include, but are not limited to, inspection and maintenance of storage areas, loading and unloading operations, control of plant site runoff, worker training, building of containment structures or equipment, measures for containing toxic organic pollutants, including solvents, and/or measures and equipment for emergency response.
- E. Users shall provide a Waste Management Plan, indicating procedures, practices, or processes that reduce or eliminate the generation of pollutants and wastes at the source. Waste minimization encompasses both the concepts of volume reduction and toxicity reduction. Within the manufacturing sector, examples of waste minimization include such activities as input substitution or modification, product reformulation, process modification, improved housekeeping, and on-site closed-loop recycling. The plan shall include the following:
- 1. An inventory of the use and generation of hazardous substances at the facility, which inventory shall identify each production process and determine the quantities of hazardous substances that each process uses, generates or releases based upon best engineering estimates;
 - 2. Identification of specific waste minimization methods that the facility may consider;
 - 3. Analysis and selection of waste minimization methods; and
 - 4. Selection of five year waste minimization goals.

§ 157-12. Monitoring Requirements

- A. Baseline Monitoring of Users determined by the Middlesex County Utilities Authority to be required to submit monitoring reports shall also provide the following data to the Borough at the users expense:
- 1. Company name, contact person, mailing address, telephone, and telefax number;
 - 2. Copies of all environmental control permits for the facility;
 - 3. Description of the facility operation, including schematic process diagrams, indicating points of discharge to the sanitary sewer;
 - 4. Monthly submittals of loadings for BOD, TSS, and Cl₂ Demand, and the average and peak flow generated by the facility. Provide details of sampling procedures and certification of laboratory performing analysis in accordance with an approved test procedure as defined in CFR Part 136. Said testing shall be performed by a laboratory certified to do the analyses by the State of New Jersey (N.J.A.C. 7:18);
5. The Borough shall be provided unrestricted access to take its own samples of the effluent and access to the meters for spot checking of the users discharge to the sanitary sewer;
6. If the user is subject to MCUA's reporting requirements in addition to the Borough's, the user shall include submittal of copies of said monitoring reports to the Borough by the fifteenth (15th) of the month following submission to the MCUA;
7. Recordkeeping by the user shall include the retention and availability for inspection and copying, of all records or information obtained pursuant to any monitoring activities required by the Federal, State, Local Agencies or the Borough. Records shall include the date, exact place, method, and time of sampling, and the name of the person taking the sample, the date of analyses, the analytical techniques or methods used, and the results of such analyses. These records shall remain available for five (5) years. This period shall automatically be extended for the duration of any litigation concerning the user, or where the user has been specifically notified of a longer retention period by the Borough;
8. The user shall provide admission to the property whenever it shall be necessary for the purpose of these regulations. The Borough, or any representative thereof, upon the presentation of credentials, may enter upon the premises of any user at reasonable times for:
- iii. The purpose of inspection/coping any records required to be kept under the provisions of these Regulations; and
 - iv. The purpose of inspecting any monitoring equipment or method, and/or measuring, sampling, and/or testing any discharge of wastewater to the sanitary sewer in order to determine compliance.
- Unreasonable delays in allowing access to the user's premises shall be subject to enforcement actions;
9. Search Warrants may be requested by the Borough should a user refuse access to a building, structure, or property, or any part thereof, and if the Borough is able to demonstrate probable cause to the belief that there may be a violation of these ordinances, or that there is a need to inspect and/or sample as part of a routine inspection and sampling program of the Borough designed to verify compliance; and
10. Confidential Information:

User information and data obtained from reports, surveys, questionnaires, permits applications, permits, and monitoring reports and inspection and sampling activities shall be available to the public without restriction, unless the user specifically requests, and is able to demonstrate to the satisfaction of the Borough, that the release of such information would divulge information, processes, or methods of production entitled to protection as trade secrets or due to reasons of business confidentiality. When requested and demonstrated by the user furnishing a report that such information should be held confidential, the portions of a report which might disclose trade secrets or secret processes shall not be made available for inspection by the public, but shall be made available immediately upon request to governmental agencies for uses related to the NPDES program or pretreatment program, and in enforcement proceedings involving the person furnishing the report. Wastewater constituents and characteristics and other "effluent data" as defined by 40CFR 2.302 shall not be recognized as confidential information and shall be available to the public without restriction.

Schedule A
Annual Sewer Rental - 2004
(Effective for bill periods beginning April 1, 2004)

This Schedule A hereby establishes three (3) sewer user classes under this ordinance as follows:

- (1) Residential structures
- | | |
|---|----------------------------|
| (1A) Residential structures | \$250.00 per service unit |
| (1B) Residential structures reduced rate: | \$125.00 per service unit. |

All recipients of the \$250.00 real property tax deduction granted in accordance with the provisions of P.L. 1963, C. 172 (R.S. 54:4-8.41) shall be given a deduction in the sewer rental rate that will result in a net annual rate not exceeding \$125.00.

- (2) Commercial users

Minimum annual sewer service unit user charge for any Commercial user connected to the Borough Sanitary Sewer System shall be four hundred fifty dollars (\$450.00). The following rates are for actual consumption in 100 cubic feet of water used per information supplied by the water company(ies).

(2A) Class 1	\$3.95400
(2B) Class 2	\$4.58900
(2C) Class 3	\$5.46500
(2D) Class 4	\$3.55400
(2E) Class 5	\$3.44400
(2F) Class 6	\$3.36500
(2G) Class 7	\$4.20500
(2H) Class 8	\$4.32500
(2I) Class 9	\$4.81300

- (3) Industrial Establishment Users

- (3A) Monitored Industrial establishments:

Notwithstanding any rates set forth herein to the contrary, in no case shall the charge for Monitored Industrial users be less than the charge for an equal volume of flow as otherwise would be determined utilizing the commercial establishments rate set forth in Commercial User (2C) Class 3 rate \$5.465 or for a minimum annual user charge of four hundred fifty dollars (\$450.00), whichever is higher. In addition to the loading and flow charges, the Monitored Industrial User shall pay for the cost of sampling and laboratory testing of the wastewater.

(3A) Flow Million Gallons	\$2,544.90
(3B) BOD per Ton	\$547.96
(3C) SS per Ton	\$530.47
(3D) Chlorine Demand per CWT	\$24.15
(3E) Unmonitored Industrial User	\$6.9675 per 100 cubic feet

- (4) Sample collection fees and laboratory analysis fees paid by the Borough shall be a pass-through cost to the User being monitored and shall be included on the next bill.

- (5) Application for a Certificate of Use for sanitary sewer review shall be through the Borough Building Department. The fee shall be \$100.00 for an application of a change of building use. This fee is in addition to the current Building Department Review Fee.

ATTEST:
Vincent Buttiglieri/Municipal Clerk

\$1867.00 March 19, 2004

BOROUGH OF SOUTH PLAINFIELD
MIDDLESEX COUNTY, NEW JERSEY

ORDINANCE NO. 1655

BE IT RESOLVED BY THE GOVERNING BODY OF THE BOROUGH OF SOUTH PLAINFIELD, MIDDLESEX COUNTY, NEW JERSEY, THAT:

Ord. #1655 entitled: AN ORDINANCE TO AMEND ARTICLE VII OF THE ZONING ORDINANCE OF THE BOROUGH OF SOUTH PLAINFIELD was adopted on first reading and advertised in The Observer on Friday, March 19, 2004 and that a public hearing be held on Monday, April 5, 2004 at 8:00 p.m. in the Municipal Building, South Plainfield, New Jersey 07080.

ORDINANCE NO. 1655

AN ORDINANCE TO AMEND ARTICLE VII OF THE ZONING ORDINANCE OF THE BOROUGH OF SOUTH PLAINFIELD,

NOW THEREFORE BE IT ORDAINED BY THE GOVERNING BODY OF THE BOROUGH OF SOUTH PLAINFIELD, NEW JERSEY, THAT:

701. R-10 & R-15 Zones

Section 701.1 entitled "Permitted Uses" shall be amended as follows:

The following shall be provided as new sections –

H. Second Floor additions with a maximum of 2 feet cantilever can be built over existing homes with less than the required 30' front or 30' secondary front setback for corner lots if the front setback or secondary front setback is not less than 24' with the cantilever and no other side yard variances are required.

I. Existing Front Porches located less than the required 30' front setback and with an existing area of 30 square feet or less may construct a roof over the existing porch which does not exceed 30 square feet.

J. Homeowners who have existing flat garage roofs may construct an A-frame roof over the flat roof as long as the roof does not exceed 7' in height at it's highest point and is not less than 5' + to the property line.

K. Detached Garages shall not exceed 576 square feet in area and shall not exceed 15' in height measured from grade to the top of the garage. Storage sheds shall be limited in number to 2 sheds and the total area of all sheds shall not exceed 200 square feet.

702. R-75 Residential

Section #702.1 entitled "Permitted Uses" shall be amended as follows:

The following shall be provided as new sections –

D. Second Floor additions with a maximum of 2 feet cantilever can be built over existing homes with less than the required 30' front or 30' secondary front setback for corner lots if the front setback or secondary front setback is not less than 24' with the cantilever and no other side yard variances are required.

E. Existing Front Porches located less than the required 30' front setback and with an existing area of 30 square feet or less may construct a roof over the existing porch which does not exceed 30 square feet.

F. Homeowners who have existing flat garage roofs may construct an A-frame roof over the flat roof as long as the roof does not exceed 7' in height at its highest point and is not less than 5' + to the property line.

G. Detached Garages shall not exceed 576 square feet in area and shall not exceed 15' in height measured from grade to the top of the garage. Storage sheds shall be limited in number to 2 sheds and the total area of all sheds shall not exceed 200 square feet.

703. R1-2 Residential Zone

Section #703.1 entitled "Permitted Uses" shall be amended as follows:

The following shall be provided as new sections –

D. Second Floor additions with a maximum of 2 feet cantilever can be built over existing homes with less than the required 30' front or 30' secondary front setback for corner lots if the front setback or secondary front setback is not less than 24' with the cantilever and no other side yard variances are required.

E. Existing Front Porches located less than the required 30' front setback and with an existing area of 30 square feet or less may construct a roof over the existing porch which does not exceed 30 square feet.

F. Homeowners who have existing flat garage roofs may construct an A-frame roof over the flat roof as long as the roof does not exceed 7' in height at its highest point and is not less than 5' + to the property line.

H. Detached Garages shall not exceed 576 square feet in area and shall not exceed 15' in height measured from grade to the top of the garage. Storage sheds shall be limited in number to 2 sheds and the total area of all sheds shall not exceed 200 square feet.

704. OBC-1 Local Business & OBC-2 Central Business Zones.

Section #704.1 entitled "Permitted Uses" shall be amended as follows:

The following shall be provided as new sections –

A. Single Family Houses.

1. Second Floor additions with a maximum of 2 feet cantilever can be built over existing homes with less than the required 30' front or 30' secondary front setback for corner lots if the front setback or secondary front setback is not less than 24' with the cantilever and no other side yard variances are required.

2. Existing Front Porches located less than the required 30' front setback and with an existing area of 30 square feet or less may construct a roof over the existing porch which does not exceed 30 square feet.

3. Homeowners who have existing flat garage roofs may construct an A-frame roof over the flat roof as long as the roof does not exceed 7' in height at its highest point and is not less than 5' + to the property line.

4. Detached Garages shall not exceed 576 square feet in area and shall not exceed 15' in height measured from grade to the top of the garage. Storage sheds shall be limited in number to 2 sheds and the total area of all sheds shall not exceed 200 square feet.

B. Two-Family Dwellings.

1. Second Floor additions with a maximum of 2 feet cantilever can be built over existing homes with less than the required 30' front or 30' secondary front setback for corner lots if the front setback or secondary front setback is not less than 24' with the cantilever and no other side yard variances are required.

2. Existing Front Porches located less than the required 30' front setback and with an existing area of 30 square feet or less may construct a roof over the existing porch which does not exceed 30 square feet.

3. Homeowners who have existing flat garage roofs may construct an A-frame roof over the flat roof as long as the roof does not exceed 7' in height at its highest point and is not less than 5' + to the property line.

4. Detached Garages shall not exceed 576 square feet in area and shall not exceed 15' in height measured from grade to the top of the garage. Storage sheds shall be limited in number to 2 sheds and the total area of all sheds shall not exceed 200 square feet.

All other provisions of the Zoning Ordinance shall remain in full force and effect.

This Ordinance shall take effect immediately upon publication and adoption in accordance with New Jersey Law.

ATTEST:
Vincent Buttiglieri/Municipal Clerk

\$163.80 March 19, 2004

BOROUGH OF SOUTH PLAINFIELD
MIDDLESEX COUNTY, NEW JERSEY

LEGAL NOTICE

An appeal has been filed by Angelo D'Albis requesting a variance from the requirements of the Zoning Ordinance of the Borough of South Plainfield to permit a deck. Proposed 92' x 288" deck lacks the 24.05 approved at BOA Case #48-03 front setback, 226" being proposed; and other variances that may be required, said property being located at 309 Libourel Avenue on Block 129, Lot 7 on the South Plainfield Tax Map.

For the purposes of hearing objections to or protests against the granting of said appeal, the South Plainfield Zoning Board of Adjustment will hold a public hearing on Thursday, April 8 in the Council Chambers, Borough Hall, at 8:00 p.m.

The maps and documents pertaining to this appeal are available for public inspection in the Building Inspector's Office, South Plainfield Borough Hall, Monday through Thursday, between 9:00 am and 5:00 pm.

\$35.00 March 19, 2004

BOROUGH OF SOUTH PLAINFIELD
MIDDLESEX COUNTY, NEW JERSEY

LEGAL NOTICE

An appeal has been filed by Ron Desclafani requesting a variance from the requirements of the Zoning Ordinance of the Borough of South Plainfield to permit the installation of an above ground pool. Proposed pool lacks the required 30' secondary front setback, 5' being proposed; and other variances that may be required, said property being located at 801 Delmore Avenue on Block 379, Lot 12 on the South Plainfield Tax Map.

For the purposes of hearing objections to or protests against the granting of said appeal, the South Plainfield Zoning Board of Adjustment will hold a public hearing on Thursday, April 22 in the Council Chambers, Borough Hall, at 8:00 p.m.

The maps and documents pertaining to this appeal are available for public inspection in the Building Inspector's Office, South Plainfield Borough Hall, Monday through Thursday, between 9:00 am and 5:00 pm.

\$35.00 March 19, 2004



Photos by Patricia Abbott

SPHS Presents Mid-Winter Concert

On Feb. 26 SPHS proudly presented their Mid-Winter Concert. The event featured the band, chorus and orchestra. The evening opened with the concert directed by Mark Tweed, followed by the orchestra, conducted by Bruce Milkolon, Tweed's Jazz Ensemble. Featured performers included Adam Toth, Mike Carmon, Joe Stasio, Ike Ejioche, Brian Schulte, John Roesch, Jamall Allen and Alexandra Viscosi. The evening concluded with the chorus, directed by Tracey Murray. Cassandra Krajcik was featured soloist. After intermission the audience was treated to a special performance by the Winter Guard.



Obituaries

Ernest McLane, 84

Ernest McLane died on Saturday, March 13 at Raritan Health and Extended Care in Raritan.

Born and raised in Lowville, NY, Ernest entered the United States Army, serving mainly in Europe during WWII before being discharged in 1956. He then moved to Piscataway for 44 years. He had also resided in Middlesex and Bridgewater before moving to Raritan in 2003.

Ernest was employed as a truck mechanic for Eastern Express in Edison for 13 years and a custodian at St. Francis Cabrini Church in Piscataway.

Ernest was a devoted father and loving grandfather.

He is predeceased by his wife, Kathleen McLane. He is also predeceased by his brothers and most of his sisters.

Surviving are a daughter, Brenda Czech of Raritan; a son and daughter-in-law, Gregory and Terri McLane and two sisters, Helen and Gertrude.

Also surviving are five grandchildren and seven great grandchildren.

Funeral services were held at the McCriskin Home For Funerals.

In lieu of flowers, donations in his memory may be made to St. Jude's Children's Hospital, 501 St. Jude's Pl., Memphis, TN 38105.

Addressing School Traffic Issues

(Continued from page 1)

asked to meet with the Ad Hoc Committee to see if some of them could be saved. It was decided that recommendations would be held off until the April meeting to further study the proposed plans.

Some of the suggested plans submitted to the board include creating a parking lot at Franklin School on a portion of the soccer field. Kennedy parents will be able to enter the side parking lot and exit onto W. Crescent Parkway to South Plainfield Ave. Also a new parking lot would be created in the grassy area in front of the school. Riley would get additional parking in the rear of the building and the side, eliminating a hand ball court.

Roosevelt's parking lot would be redesigned, a parking lot built along Evona Place, which will need to be vacated. The parking lot at Grant would be increased and buses will use the back of the school; near the high school for loading. The Middle School parking lot would be realigned, flipping the circulation and a bus loop will be made in the front of the school, as well as parking for 50-60 cars. The high school parking lot would be realigned to make it easier to drop off students and exit the parking lot. The tennis courts would become a parking lot and the side road nearby made a thru street.

Sgt. Murtagh commended the Board for taking an interest in traffic

around the schools and thanked them for including the police in their study. Murtagh said he can't ever remember a study done concerning school traffic. He said fewer and fewer children walk to school and more and more parents drive their children. Each year traffic becomes more of a safety issue and it is a real drain on available police manpower. He added that a recent study of summons issued at Franklin School found that all were issued to people who lived within a few blocks of the school.

The Ad Hoc Committee will decide which schools have the most safety concerns and propose those to be the first on the schedule to be done.

LEGAL NOTICES

BOROUGH OF SOUTH PLAINFIELD MIDDLESEX COUNTY, NEW JERSEY LEGAL NOTICE

March 12, 2004

Public Notice is hereby given that the following action was taken by the South Plainfield Board of Adjustment at its meeting held on March 11, 2004.

- A. Case #80-03—Pamela Hargreaves, Block 3; Lot 22; 803 Trinity St. The applicant's request for lot area and lot width variances in order to construct a (2) story home was hereby GRANTED with (1) condition.
- B. Case #04-04—Lynda Pullen, Block 209; Lot 2; 120 W. Crescent Pkwy. The applicant's request for a front yard setback variance to erect a 6 ft. by 13 ft. dormer with a 29 ft. front yard setback and a 5 ft. by 5 ft. front porch with a 23 ft. front yard setback was hereby GRANTED with (1) condition.
- C. Case #05-04/TU—Jerral's Garden, Inc. t/a Curves, Block 265; Lot 4; 27 South Plainfield Ave. The applicant's request for a temporary use permit was hereby GRANTED for a period of (6) months with (1) condition.
- D. Case #06-04—Frank and Marie Benak, Block 380; Lot 4.02; 921 Arlington Ave. The applicant's request for a rear yard setback variance to construct an addition measuring 16 ft. by 31 ft. and with a 16.19 ft. rear yard setback was hereby GRANTED.

Respectfully Submitted,
Mary Beth Khidre
Secretary, Zoning Board of Adjustment

\$40.25

March 19, 2004

Pick up Litter and
Make South
Plainfield Glitter
KEEP YOUR BOROUGH BEAUTIFUL

BOROUGH OF SOUTH PLAINFIELD MIDDLESEX COUNTY, NEW JERSEY ORDINANCE No. 1653

BE IT RESOLVED BY THE GOVERNING BODY OF THE BOROUGH OF SOUTH PLAINFIELD, MIDDLESEX COUNTY, NEW JERSEY, THAT:

Ordinance #1653 entitled: AN ORDINANCE REGULATING PARKING, STOPPING AND STANDING OF ANY MOTOR VEHICLE ON A PORTION OF ROOSEVELT AVENUE IN THE BOROUGH OF SOUTH PLAINFIELD was adopted on first reading and advertised in The Observer on Friday, March 19, 2004 and that a public hearing be held on Monday, April 5, 2004 at 8:00 p.m. in the Municipal Building, South Plainfield, New Jersey 07080.

ORDINANCE NO. 1653

AN ORDINANCE REGULATING PARKING, STOPPING AND STANDING OF ANY MOTOR VEHICLE ON A PORTION OF ROOSEVELT AVENUE IN THE BOROUGH OF SOUTH PLAINFIELD, MIDDLESEX COUNTY, NEW JERSEY;

NOW THEREFORE BE IT ORDAINED BY THE GOVERNING BODY OF THE BOROUGH OF SOUTH PLAINFIELD, NEW JERSEY,

Section 1. Whenever any words or phrases are used in this ordinance, the meaning respectively described to them in Subtitle 1 of Title 39 of the Revised Statutes of New Jersey shall be deemed to apply to such words or phrases.

Section 2. No person shall stop or stand any motor vehicle at the following location in the Borough of South Plainfield, County of Middlesex, State of New Jersey:

a) Roosevelt Avenue - both sides between New Market Avenue and Sage Street

Section 3. Any person or persons who violate any provision of this ordinance shall, on conviction thereof, forfeit and pay a fine of not more than fifty (\$50.00) dollars.

Section 4. All ordinances or parts of ordinances, which are inconsistent herewith, are repealed to extend to such consistency.

Section 5. This ordinance shall take effect immediately upon adoption and publication in accordance with New Jersey Law.

ATTEST:
Vincent Buttiglieri/Municipal Clerk

\$59.50

March 19, 2004

BOROUGH OF SOUTH PLAINFIELD MIDDLESEX COUNTY, NEW JERSEY ORDINANCE NO. 1652

BE IT RESOLVED BY THE GOVERNING BODY OF THE BOROUGH OF SOUTH PLAINFIELD, MIDDLESEX COUNTY, NEW JERSEY, THAT:

Ordinance #1652 entitled: AN ORDINANCE AMENDING ORDINANCE #367 PROHIBITING PARKING TEMPORARILY ON CERTAIN STREETS IN THE BOROUGH OF SOUTH PLAINFIELD, COUNTY OF MIDDLESEX FOR SNOW PLOWING, SNOW REMOVAL AND OTHER EMERGENCIES. BE IT ORDAINED BY THE BOROUGH OF SOUTH PLAINFIELD THAT:

ORDINANCE NO. 1652

AN ORDINANCE AMENDING ORDINANCE #367 PROHIBITING PARKING TEMPORARILY ON CERTAIN STREETS IN THE BOROUGH OF SOUTH PLAINFIELD, COUNTY OF MIDDLESEX FOR SNOW PLOWING, SNOW REMOVAL AND OTHER EMERGENCIES. BE IT ORDAINED BY THE BOROUGH OF SOUTH PLAINFIELD THAT:

Section 1. be amended to include the entire lengths of the following roadways:

Amboy Avenue
Central Avenue
Cedarbrook Avenue
Chambers Street
East Crescent Parkway
East Fairview Avenue
East Hendricks Boulevard
Field Avenue
Foster Avenue
Garibaldi Avenue
Grant Avenue
Joan Street
Kenyon Avenue
Lane Avenue
Merchants Avenue
Murray Avenue
Oakland Avenue
Rahway Avenue
South 9th Street
Stelton Road
West 7th Street.

Section 1A.

Parking be restricted for snow plowing, snow removal and other emergencies on the following streets between Woodland Avenue and Oxford Avenue:

Sprague Avenue
East Golf Avenue
Fairmount Avenue
Wexler Place

\$61.25

March 19, 2004

BOROUGH OF SOUTH PLAINFIELD MIDDLESEX COUNTY, NEW JERSEY ORDINANCE NO. 1651

BE IT RESOLVED BY THE GOVERNING BODY OF THE BOROUGH OF SOUTH PLAINFIELD, MIDDLESEX COUNTY, NEW JERSEY, THAT:

Ordinance #1651 entitled: A CAPITAL ORDINANCE APPROPRIATING \$30,000.00 FROM THE SEWER UTILITY CAPITAL IMPROVEMENT FUND FOR THE PURCHASE OF A GENERATOR FOR THE NORTH PUMPING STATION was presented for adoption after a public hearing was held thereon by the Mayor and Council of the Borough of South Plainfield at 8:00 p.m. on Monday, March 15, 2004 in the Municipal Building, South Plainfield, New Jersey 07080.

ATTEST:
Vincent Buttiglieri/Municipal Clerk

\$38.50

March 19, 2004

AUTOBODY

SULIVAN'S AUTO BODY

BodyShop Lic. #02313A

Hours
Mon-Fri
8am-5pm

2210 Hamilton Blvd.
South Plainfield
New Jersey 07080

908-757-5100
Fax: 908-757-3105



WHAT
ARE YOU
WAITING
FOR?

ADVERTISE YOUR
BUSINESS HERE
FOR AS LITTLE
AS \$15 PER WEEK.

908-668-0010

MULCH/TOP SOIL/STONE

Call

KLK Trucking for:

Top Soil, Mulch, Sand, Infield Mix,
Decorative & Crushed Stone

Sanding • Salting • Snowplowing
Pick up or Deliv., Mon. thru Sat

908-757-4434

265 Ryan Street
South Plainfield

REAL ESTATE



Prudential

Rose REALTORS®

Rose Marie Pelton

REALTOR-ASSOCIATE

South Plainfield Resident

For Over 39 Years

908-753-4450 X302

Toll Free 800 370-2424

Fax 908-753-0136

RosePelton@att.net



Rose Marie Pelton

Prudential Rose REALTORS®

659 Mountain Boulevard, Watchung, NJ 07069



McCriskin

HOME FOR FUNERALS

2425 PLAINFIELD AVENUE
South Plainfield, NJ 07080
FAX (908) 561-6744

RICHARD W. McCRISKIN, Pres., Mgr.
NJ License No.3147

(908) 561-8000

police report

• On March 8 Maria Guaman, 44, of Plainfield was arrested at the DMV for impersonation, motor vehicle title fraud, sale of documents and forms and forgery.

• Javier Alvarado, 35, of Scotch Plains was arrested at the DMV for exhibiting a fraudulent drivers license.

• On March 9 John R. Feeley, 30, of North Plainfield was arrested at Lemmo's Liquors for possession of an unlawful weapon, criminal mischief, possession of a weapon for unlawful purposes and assault after trying to attack a bartender with the handle of a beer tap.

• On March 10 Micro Smart Inc. on Kennedy Rd. reported that a customer had used a fraudulent credit card to purchase \$5,863 worth of various computer equipment.

• On March 11 Park Ave. resident reported that his vehicle had been struck with a partially filled beer can while driving down Maple Ave.

• On March 12 an employee at 107 Corporate Blvd. reported the theft of Zeon headlamps from his Acura that was parked in the lot.

• A Church St. resident reported the theft of a 1992 Nissan. The car was recovered the next day in Plainfield with the wheels missing.

• On March 13 Dung Tien Bui, 32, of South Plainfield was arrested at his home for driving while intoxicated, careless driving reckless driving, leaving the scene of an accident and failure to report an accident after striking a parked car in front of Cicco's Pizza.

• On March 14 Keane Bryce Cambridge, 25, of Plainfield was arrested on Cherry St. for receiving stolen license plates which were on his vehicle.

• Two residents on W. Nassau Ave. reported that eggs had been thrown at their parked vehicles.

• A New Brunswick Ave. resident reported the theft of a Sony AM/FM/CD player from his locked vehicle parked on Schindler Dr. The hatch back was open and the stereo missing.

• A Schindler Dr. resident reported that his parked vehicle had been struck with an egg.

• A Clark Ln. resident reported that the lock mechanism of his car had been pushed in and a Pioneer car radio was taken.

Last chance to purchase OBSERVER photos by Patricia Abbott!

There are many photos that have never been published! The following files will be deleted in March: SP Fire Dept. 02 & 03 FD concerts, FD Circus, 03 fifth grade class pics, 02 & 03 high & middle school graduations, '02 & '03 Jr & Sr. Proms, election 02 & 03, Girl Scout Gold Awards, 02 & 03 Bike Rodeo, All District Concert, SPSHS Anything Goes, SPMS Yearbook, Grant's ANNIE Jr., MS girls basketball Grant 6th basketball, Kennedy Grandparent's Day, Bands for Riley, Skatepark, PAL concert, school concerts & events, Nat. Honor Soc. inductions, Franklin K&J and Sues, Dare Graduations, 02 & 03 Labor Day, MS Peer to Peer, SDW Footloose, 42nd St. SPSHS players, Anything Goes! Hello Dolly!, Damn Yankees, Tommy, & many other files. For detailed info or to see proof sheets call 908-756-8011 or email Pattie at angelonly@aol.com.

Classifieds

Classified Rates: \$11 for 3 lines (min.) \$1 ea. add. line (10% disc. for 4 consecutive insertions).

HELP WANTED

P/T VOLUNTEER COORDINATOR—Mon-Fri 9-2. Good communicator, knowledge of community senior population. Must have car avail. (732) 249-6330.

HOUSEKEEPING

FOR A HOUSE TO LOOK ITS BEST put Clean Solutions to the test! \$10/room. Call Terri (908) 222-1441.

HOME FURNISHINGS FOR SALE

7 PC. BEDROOM SET—BED, CHEST dresser & mirror and night stand. New in box. Value \$2600. Sell \$975. (732) 259-6690.

MATTRESS SET, FULL, NEW IN plastic. \$100. (732) 259-6690.

MATTRESS AND BOX QUEEN DOU-ble pillow top. New in bags \$149. Can deliver. (732) 259-6690.

HOME FURNISHINGS FOR SALE

5 PC. BDR SET—NEW IN BOX. LIST \$1299. Sacrifice \$565. (732) 259-6690.

DINING ROOM SET—CHERRY W/1 pc. hutch, table and chairs, new in boxes. Sell \$825. Can deliver. (732) 259-6690.

BED—KING MATTRESS SET, NEW in plastic. Sell \$225. (732) 259-6690.

JETS TICKETS FOR SALE

2 SEASON TICKETS, SEC 321, ROW 20. \$60 each. Must buy season. Call (908) 754-3420.

MORTGAGES

FAST APPROVALS, GREAT RATES personalized service, (908) 822-0090.

Deadline to submit classified advertising is Monday, 5 p.m. Call 908-668-0010

Business & Professional Services

To advertise your business here, call 908-668-0010.

COMPUTERS

Concerned About Computer Virus Protection? Home Security?

For advice and installation, call Stan Wilkinson at

ST Computers

908-769-0709

- New Computers/Upgrades
- Hardware/Software Installations
- In Home Service
- Some Used Computers Available

Cell: 732-423-3504

Email: stcomputers@comcast.net

CONTRACTORS

BUILDER & GENERAL CONTRACTOR

NJ DCA LIC #019771 Since 1981

Lordina Builders
908-753-3850

ADDITIONS • KITCHENS
BATHROOMS
Office Renovations

FREE ESTIMATES

FITNESS CENTERS

SLIM AND TONE
SOUTH PLAINFIELD

30 Minute Workout for Women



\$39 Monthly with No Initiation Fee!
Open all day

2601 Hamilton Blvd.
(between Home Depot & Durham Ave.)
(908) 769-0009

FURNITURE REPAIRS

FURNITURE MEDIC
"the prescription for damaged furniture"

Precision Furniture Repairs On-Site

Scratches • Gouges • Pet Damage
Water Marks • Burns
Structural Repairs • Broken Joints
Antique Restoration
Kitchen Cabinets Refinished
And MUCH MORE!
(908) 755-8440

MASSAGE THERAPY

CENTRAL JERSEY
Holistic Health Center and Spa
• MASSAGE • REFLEXOLOGY
• HYPNOSIS • REIKI
• DOULA LABOR ASSISTANT
Roxanne Cortese, CD, CMT, CPT
2701 Park Ave. So. Plainfield, NJ 07080
(908) 561-1511
By Appointment Only
GIFT CERTIFICATES AND GIFT BASKETS

HEALTH & WELLNESS

Hua Kang Health Center
Massage, Acupressure, Reflexology
Acupuncture • Chinese Herbs • Facial
Licensed Chinese massage therapists and acupuncturists provide experienced Chinese-style services using traditional Chinese medicine methods. Effective in treatment of various pains, symptoms and body needs.
Appointments/walk-ins welcome. Open 7 days/week, 9:30am-9pm
Gift Certificates and Bonus Program available.
We accept credit cards and health insurance.
1763 Lincoln Highway (Rt. 27) Edison • 732-819-0058
126 Plainfield Ave. Edison • 732-572-5599
275 Rt. 18 South, East Brunswick • 732-967-1300
Treat yourself at our three locations. Your satisfaction guaranteed.

LANDSCAPING

Lalaria Landscaping
SPRING CLEANUP
Leslie Chambers
Telephone: (908) 917-1668
Fax: (908) 757-5175
• Fully Insured •
• Affordable and Reliable! •
Lawn Maintenance

LANDSCAPING

Silver Creek Landscaping
SOUTH PLAINFIELD
COMPLETE LAWN MAINTENANCE
• LANDSCAPE PLANTINGS
• SHRUB & TREE PRUNING
• HYDRO SEEDING & SOD
• MULCH / STONE / TOPSOIL
• RETAINING WALLS
• BRICK PAVERS - PATIOS & WALKS
• RESIDENTIAL & COMMERCIAL
— FREE ESTIMATES —
908-756-7272

MORTGAGES

FAST APPROVALS... GREAT RATES... PERSONALIZED SERVICE...
Colony Mortgage
Mike Dixon, President
Licensed Mortgage Broker - NJ Dept. of Banking
908-822-0090
2325 Plainfield Ave. Suite 2E
South Plainfield, NJ
Se Habla Espanol

MASONRY

Luigi BOTTONE MASONRY
ALL TYPES OF MASONRY
CALL FOR FREE ESTIMATE
732-558-4754
• Steps/Porches
• Sidewalks
• Brickwork
• Brickpavers
• Patios
• Belgian Block Curbing
• Foundations
• Driveways
• French drains
• Chimneys

PAVING/MASONRY

MARK L. DiFRANCESCO
PAVING • MASONRY
Driveways • Parking Lots
Steps • Walkways • Patios
Pavers • Concrete
Drainage • Water Proofing
3RD GENERATION
908-668-8434

PIZZA

Ciccio's Pizza
134 Maple Ave., South Plainfield
(Across From Firehouse)
Open 7 Days
(908) 753-4060
Phone Ahead For Fast Pick Up
Mon. & Thurs. 11am to 10pm
Fri & Sat 11am-11pm • Sunday 12pm-10pm
SUNDAY SPECIAL
2 medium pies **\$9.95**
FRIED YEPS! FRI & SAT
STEAKS • SUBS • DINNER

ROOFING

J.T. PENYAK ROOFING CO.
COMMERCIAL INDUSTRIAL
RESIDENTIAL
908-753-4222
FAX 908-753-4763
124 CAMDEN AVE.
SO. PLAINFIELD, NJ 07080

REAL ESTATE

Century 21
Moretti Realty
Joseph Diegnan
"Nobody knows South Plainfield like Joe Diegnan."
Business: (908) 755-5300 x 315
Evening: (908) 756-9123
Email: diegnanj@moretti21realty.com
REATOR-ASSOCIATE & LIFETIME SO. PLAINFIELD RESIDENT
225 Maple Ave., South Plainfield, NJ 07080

Century 21
Main Street Realty Inc.
Robert Publik
Realtor-Associate
Business: (732) 549-9000 x 358
Evenings: (908) 755-2709
E-Mail: bobp@comcast.net
OFFICES IN N. EDISON, WOODBRIDGE, COLONIA
2077 Oak Tree Road, Edison, NJ 08820

SHEETROCK/SPACKLE

FITZ DRYWALL
908-226-0814
Sheetrock & Spackle
Repairs to New Construction
Quality Work at Great Prices
Call Sean at 908-226-0814

SPIRITS

1645 Park Avenue, South Plainfield
791-9463
Sals Spirit Shoppe
Cavit (1.5 liter) \$9.99 Mon.-Sat. 9am-1am
Pinot Grigio \$9.99 Sundays 1am-7pm
Estate Cellars
White Zinfandel (750ml) \$3.49
(1.5 liter) \$5.49
Bring in this ad for 10% off on wines

SALON

Let us put you in a new trendy look...
Specializing in Color, Foils, Haircuts, Wedding Parties
South Side Salon
Facials, Massage, Waxing & Nails
2201 South Clinton Ave.
South Plainfield **908-753-5115**

South Plainfield Extends Its Hospitality

Stefan Norell, a firefighter from Harnosand, Sweden, was visiting relatives in South Plainfield last week and wanted to pay a visit to our fire department to see how much Swed-

ish fire departments have in common with the ones here.

Norell got in touch with Councilman Ray Petronko. Not only did he get tour of the fire department,

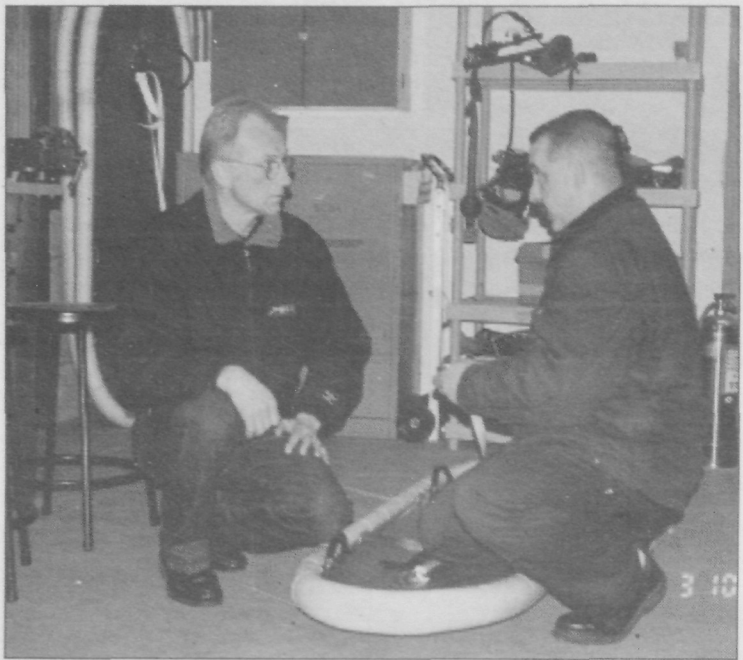
Petronko arranged for him to tour the police department and the rescue squad as well.

Norell was very impressed with the warm welcome he received from the everyone he met in South Plainfield, and the extensive tour he took of the fire department with Chief Del Negro. He was surprised that most of the fire equipment is the same in Sweden and that their routines are also very much alike.

Harnosand, Sweden is a town of about 25,000 people, roughly the same size as South Plainfield, but Harnosand has an all-paid fire department, of which Norell has been a member for 28 years. South Plainfield's fire department is made up of all volunteers. Norell is also a fire inspector, teaches firefighters courses and helps train new members.

Harnosand is located about 500 kilometers from Stockholm. The cold climate there means they are often ice rescues, and Norell was interested when Chief Del Negro showed him some of our ice rescue equipment.

Norell will return to Sweden with positive memories of his visit here.



Stefan Norell, a firefighter from Sweden, discusses ice rescues with Fire Chief Larry Del Negro.

Use of "Where's My Refund?" Service Up Sharply

Taxpayers nationwide have made about 9.8 million visits to the "Where's My Refund?" service so far this tax season, almost twice as many as a year ago, according to the Internal Revenue Service. This reflects ac-

tivity through the end of February.

Taxpayers who file electronically can use the service within 72 hours of submitting their returns. Paper filers can use "Where's My Refund?" three to four weeks after their returns

are mailed.

"Taxpayers have discovered that 'Where's My Refund?' is a fast, easy way to check on their refunds," said IRS Commissioner Mark Everson.

The "Where's My Refund?" service is accessible from the IRS.gov home page. Instructions guide individual taxpayers through a process that asks for three pieces of information from their returns: Social Security Number, filing status and refund amount.

Once the information is submitted, "Where's My Refund?" notifies the taxpayer whether the return was received and is being processed, and, if processed, the expected mailing date or direct-deposit date for the refund. The service will also notify a taxpayer if a refund has been returned to the IRS as undeliverable.

In cases where a refund is delayed because of a math error or other issue, "Where's My Refund?" will advise the taxpayer on steps he or she can take to resolve the problem.

Taxpayers can ensure a successful experience by entering the requested information exactly as it appears on their tax returns filed with the IRS.

The "Where's My Refund?" service debuted nearly two years ago. It handled more than 18 million electronic inquiries in 2003.

Help Feed the Hungry!

Jewish Family & Vocational Service of Middlesex County (JFVS), in cooperation with Adath Israel, the National Council of Jewish Women (NCJW)-Metro Jersey section and Congregation Neve Shalom, will be coordinating a community effort to provide Passover food packages for families in need of assistance in Northern Middlesex County.

Donations of non-perishable food are being sought by JFVS. Specific

items needed include: coffee, borsht, horseradish, grape juice, honey, chicken soup, applesauce, macaroons, tea bags, cake mix, Shabbat candles and Yahrzeit glasses. Anyone with food donations must contact Amy Opitz at (732) 777-1940 ext. 122. Monetary donations are especially appreciated to augment food collection and purchase perishable food items. Tax deductible checks may be made out to JFVS Passover Food Fund. Mail to JFVS, 515 Plainfield Ave., Suite 201e, Edison, NJ 08817.

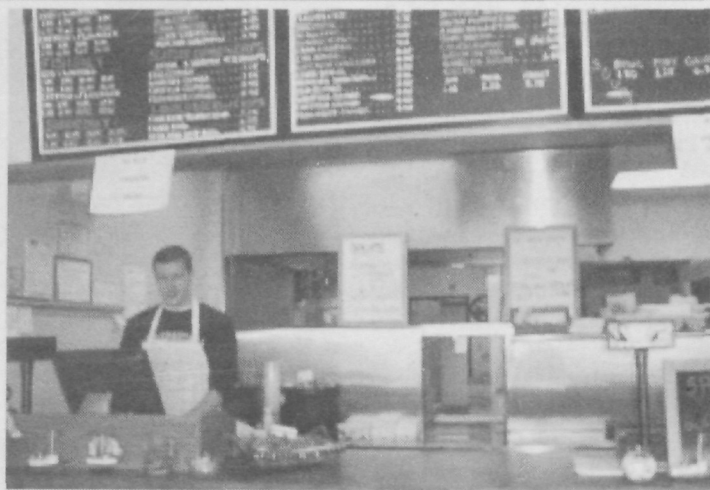
Volunteers are needed to package and deliver food baskets on Sunday, March 28 from 9:30 a.m. to 12:30 p.m. at Congregation Neve Shalom, 250 Grove Ave. in Metuchen.

For further information or to volunteer to help, call Amy Opitz, Volunteer and Essential Needs Coordinator, at (732) 777-1940 ext. 122.

Craft Vendors Needed

Vendors are needed for a Craft Fair on Friday, April 2, from 5-9 p.m. at the John E. Riley Elementary School.

For additional information, call (908) 561-2530 and ask for Laura.



Captain Wonka's on Park Avenue is open seven days a week.

Captain Wonka's, a Good Choice for Fish n' Chips Lovers

Thinking of where to eat during this Lenten season? Captain Wonka's, located at 1912 Park Ave. has a great fish menu.

Wonka's opened a year ago, and according to owners Rocco and Debbie Tropeano, business has been

brisk. Wonka's offers a variety of Southern or English style fish and chips dinners, combo platters, sandwiches, salads, soups, as well as chicken dishes.

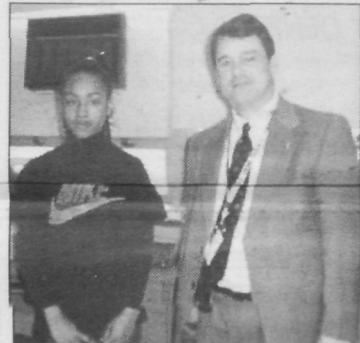
Stop in or you call in your order by phone at (908) 222-2025.

Junior Journalist Corner



Sara Johnson Named "Junior Journalist"

Middle School seventh grader Sara Johnson's "The Painting" is this



Sara Johnson, Middle School seventh grader, with Principal Fred Oberkehr.

week's winning entry in the Observer/Hometown Heros Junior Journalist Program. Crystal will receive dinner for her family courtesy of Hometown Heros.

Students are encouraged to submit their original poetry, articles, opinion pieces or essays. Entries should be given to teachers.

Winners receive a catered dinner from Hometown Heros and will be invited to an end-of-year banquet with their families.

For information on the program, or for the name of your school contact, call the Observer at (908) 668-0010 or Hometown Heros at (908) 755-4376.

By Sara Johnson The Painting of My Emotions

All my pain, anger, hate, love, and passion form a ball that rolls all over me. They eat away at my success, but they also erase and rewrite my mistakes.

Emotions just take over me. They make twisted decisions that affect me for life, but they really just take away all the happiness and replace it with pain.

They are colors of darkness, but can also be beautiful colors of life.

Emotions are confusing and make decisions so hard to make, cause sometimes you just can't take the colors that they paint.

LEGAL NOTICE

ORDER FOR SUBSTITUTE SERVICE

Case No. 03-251063-DM

JUDGE WEISS

STATE OF MICHIGAN, in the Genesee County Courthouse, 900 S. Saginaw Street, Flint, Michigan 48502

JEANEAN SMITH
Plaintiff,

v.

EUGENE E. SMITH,
Defendant.

At a session of said Court, held in The City of Flint, County of Genesee, State of Michigan, on the 10th day of March, 2004.

PRESENT: HON. ROBERT E. WEISS,
Circuit Court Judge

Upon reading the pleadings and the Court being otherwise fully advised.

IT IS HEREBY ORDERED that the Defendant, EUGENE E. SMITH, shall be served with true copies of the Alias Summons and Complaint for Divorce, by publishing notice in the Genesee County Legal News for three consecutive weeks.

Date: March 10, 2004

ROBERT E. WEISS
District Court Judge

NOTICE TO THE DEFENDANT: In the name of the People of Michigan you are notified:

1. You are begin sued.
2. YOU HAVE 21 DAYS after receiving the summons to file an answer with the court and serve a copy on the other party or to take other lawful action (28 days if you were served by mail or you were served outside this state).
3. If you do not answer or take other action within the time allowed, judgement may be entered against you for the relief demanded in the complaint.

Jeffrey L. Birrell (P-40075)
1203 Beach St.
Flint, MI 48502

\$183.00

March 19, 26 and April 2, 2004

PICK UP THOSE PENS & ENTER TODAY!



Roosevelt Student Crystal Miles with aunts Doren Dobson and Jackie Douglas and Katherine and Claude (Sean) Douglas welcome Debbie and Charlie Kurland of Hometown Heros. Not pictured is her uncle Locksley Douglas.

Junior Journalist

Win a catered dinner for your family from Hometown Heros through the Observer/Hometown Heros Junior Journalist Contest! To enter, see story above or ask your language teacher at school.

2004 GOLDEN GLOVE FINALS

All bouts sanctioned by: NJ Association of USA Boxing Inc.



Doors Open at 7 pm
Bouts Start at 8 pm

Friday ~ April 16, 2004

South Plainfield High School

200 Lake Street, South Plainfield, NJ

General Admission ~ \$12.00

GOLDEN RINGSIDE \$ 75.00

includes DINNER AT 5:00 PM

at Flanagan's Restaurant

2501 Plainfield Avenue, South Plainfield, NJ

For Tickets or Reservations Call

(908) 226-7663 or (908) 753-1341

Ticket purchase includes a chance to win a 51" Big Screen TV

Sponsored by The South Plainfield PBA Local 100