

DEC 28 2001

SOUTH PLAINFIELD  
FREE PUBLIC LIBRARY  
1284 PLAINFIELD AVE.  
SOUTH PLAINFIELD, N.J. 07080

# South Plainfield Observer

VOL. 5, NO. 16

50 CENTS

DECEMBER 28, 2001

## Bullock, DeLair Graduate From Police Academy

### DeLair Receives Sharpshooter Award

South Plainfield police officers David DeLair and Mark Bullock graduated from the Somerset County Police Academy last week. Both officers, appointed in July, have successfully completed the six-month course and are now become our newest police officers.

More than 700 attended the graduation ceremonies last Friday. Many of the graduates were carrying on a family tradition, following in their fathers' and brothers' foot-

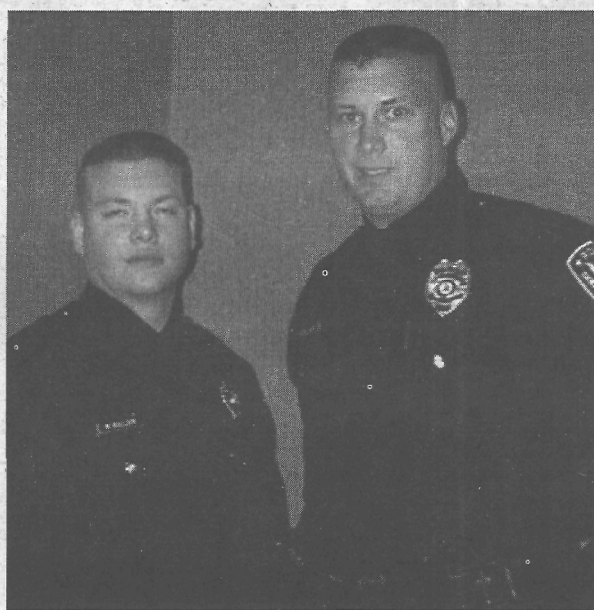


steps in law enforcement. It was more than evident when the diplomas were handed out — just about every graduate received his diploma from a dad, a brother or, in some cases, from both.

South Plainfield's graduating officers were no exception. Officer Mark Bullock received his diploma from his proud dad, retired South Plainfield Lt. Thomas Bullock. Officer David DeLair is the brother of former Police Officer Mark DeLair, who died in an automobile accident in February, 2000. His proud family watched with mixed emotions as he received his diploma.

Officer DeLair also received the Captain James Hoffman Sharpshooter Award. He shot three rounds with a score of 100%, a feat that is hardly ever achieved at the academy.

This graduating class of 39 recruits also had another distinction. They were chosen by *Court TV* to do a documentary on what it takes to become a police officer. During the entire 23-week course, the film crews were at the school shooting every aspect of their class, from start to fin-



South Plainfield police officers, Mark Bullock (l) and David DeLair (r).



(Above right) Police Officer Mark Bullock receives diploma from his father, Ret. Police Officer Thomas Bullock. (Above) Police Officer David DeLair is surrounded by his parents, Robert and Linda DeLair, and brothers Andrew and John.

ish. They were also on hand at the graduating ceremonies. A two-hour documentary will be aired sometime in the next few months.

The 23-week course, taught at Somerset County Police Academy, is one of the longest and most comprehensive of its kind in the state. This course is best described as a blend of military training and college academics. During the basic course, recruits are taught over 120 subjects, including criminal law, police profession-

alism, criminal justice systems, arrest, search and seizure, communication, emergency driving, emergency medical training, firearms, self-defense, patrol practices, motor vehicle laws, accident investigations, criminal investigation and physical fitness. Over the past 14 years 26 classes, totaling more 1,200 officers, have successfully graduated from the academy.

The graduating officers will ride with experienced patrolmen for the next few months.

## School Board Candidacy Information Available at Local District Office

The deadline for filing nominating petitions for positions on the South Plainfield Board of Education is 4 p.m., Monday, Feb. 25, 2002, as announced by South Plainfield's Business Administrator Ellen B. Johnson. The election is scheduled for Tuesday, Apr. 16, 2002.

Prospective school board candidates can obtain a "School Board Candidate Kit" at the local school district office, 305 Cromwell Place, between 9 a.m. and 3 p.m. daily. Published by the New Jersey School Boards Association, the School Board Candidate Kit includes information about legal qualifications for school board candidacy, campaign

procedures and the role of the school board member. Information about the New Jersey School Ethics Act, important dates in the school election process and briefing sessions for school board candidates are also included in the kit.

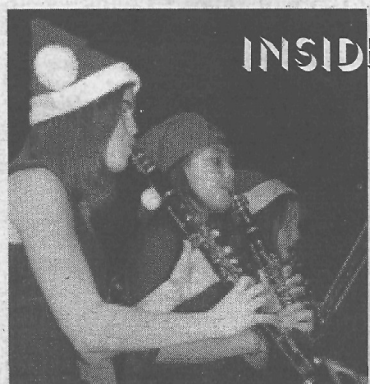
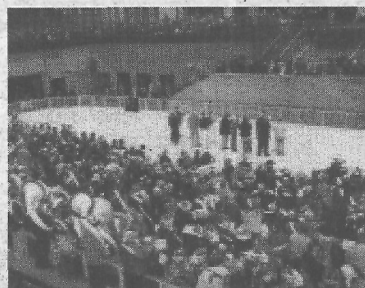
"Lurge citizens who believe they can make a contribution to their communities' schools to consider board of education membership," said Patti J. Pawling, NJSBA president. "Serving on your local school board doesn't require a degree in education. The most important attribute a candidate can bring to office is a sincere interest in the community, its children and their education."



Pictured (top row, l to r): Wael Kanj, Jeremy Vesper, Jessica Honeywell, Alicia Pompey, Jordan Lynch; bottom (l to r): Wadji Kanj, Danny Sierzega and Adam Toth. This marks Jordan Lynch and Adam Toth's third festival performance.

## Students Perform at Tuba Festival

On Dec. 9, seven students from South Plainfield High School and one student from the South Plainfield Middle School performed at the Rockefeller Center Ice Rink for the 28th Annual Tuba Festival in New York City. These students were amongst almost 400 participants. Anyone who can play a low brass instrument was invited to participate. Practice for the performance was held in an underground garage adjacent to the ice rink. A conductor went over the music with the group, then they were led underground to the ice rink to perform.



## INSIDE THIS ISSUE

|   |            |
|---|------------|
| <i>Who's New in the Schools? ....</i>   | <b>3</b>   |
| <i>Holiday Season in South Plainfield was filled with music and song by local schools .....</i> | <b>6,7</b> |
| <i>High School Winter Sports Schedule .....</i>   | <b>8</b>   |
| <i>Project Santa .....</i>  | <b>10</b>  |

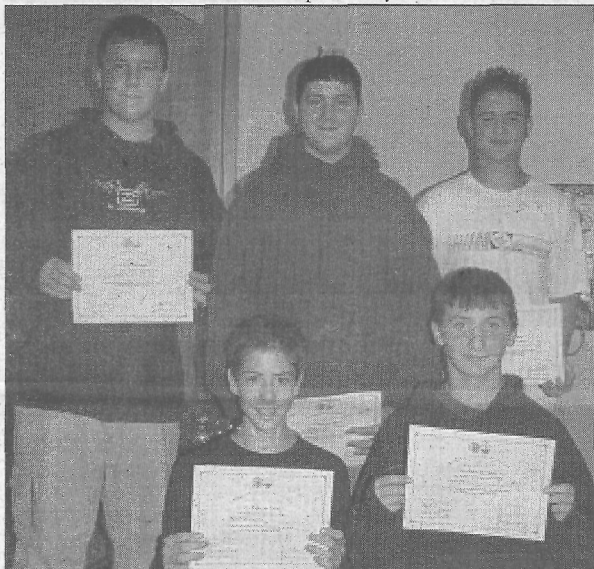


## Local Bands Commended By Mayor and Council



Nine teenagers, member of local bands Level Zero and Three Legged Dog were recently commended by the Mayor and Council for their fundraising efforts for victims of the Sept. 11 attacks. Last week's *Observer* published only one of the bands, not both.

Level Zero members pictured above are: Joshua Jackson, Ryan Cornell, Danny Lammi and Greg Garbowski, all high school sophomores. Three Legged Dog pictured below consists of: Todd Rivers, Keenan Gaynor, Grant Gianneschi, Seiichi Daimo and Ryan Suleski. They are freshmen at SPHS. The boys are all South Plainfield residents with the exception of Ryan Cornell.



## IN MY OPINION

### To The Editor:

This past year, my young children and I fell on hard times due to a divorce. I was overwhelmed this holiday season with the kindness and generosity of the people of South Plainfield by their donations. This Christmas my children will be able to have an ample amount of toys and clothes under the tree because of their generosity.

I would like to thank the South Plainfield Educational Association, the Board of Social Services and Debbie and Grace from the St. Vincent DePaul Society of Sacred Heart Church for all their help. And especially to the people of this town for their generosity. You know who you are!

**A GRATEFUL NEIGHBOR**

### To The Editor:

I read with interest (but not with surprise) in today's paper that the local municipal taxes will increase six cents. That's from 80 cents to 86 cents per \$100 of assessed value on a home.

I also found it interesting (but not surprising) that it was voted on exactly ONE month after election day, and at the last Borough Council meeting of the year.

The Democrat's slogan this year was "Democracy Works." Everyone will need to work to pay for the increase.

If you voted Democrat on November 6, don't forget to thank yourself when writing out your check to pay your taxes or your mortgage.

**LINDA DASHUTA**

### Dear Editor:

I would like to take this time to congratulate my cousin Larry DelNegro III for being elected the new Fire Chief of the South Plainfield Volunteer Fire Department.

I am very proud of you, as are the rest of the family, not to include a few in heaven you made proud. I am sure you will do a great job, with your knowledge, dedication, and hard work.

Again, Congratulations to our new Fire Chief!

Good Luck!

**TONY PISANIELLO**

### SEND YOUR LETTERS/ OPINIONS TO:

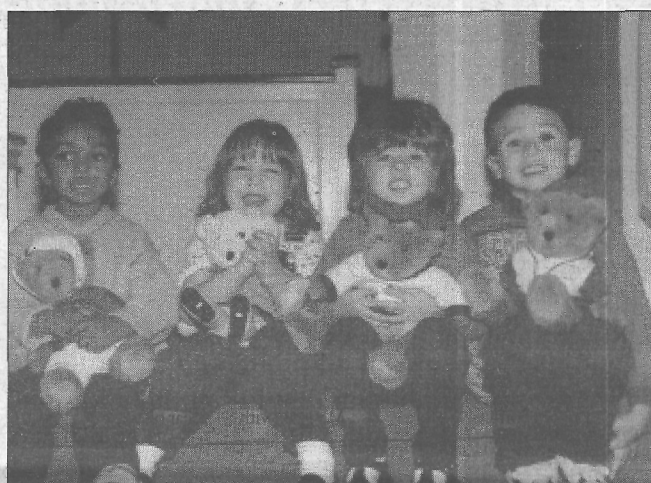
The South Plainfield Observer, 1110 Hamilton Blvd., Suite 1B, South Plainfield, NJ 07080  
fax: 908-668-8819 or email: ggnan@aol.com

## Pilgrim Covenant Dresses Teddy Bears

Members of Pilgrim Covenant Church, and children of Pilgrim Covenant Learning Center dressed Teddy Bears during the month of November.

The bears were provided by the Salvation Army and distributed to needy children and seniors in nursing homes. Over 90 bears were given outfits ranging from angels to police officers and fire fighters. Some children dressed the bears in clothes they themselves wore as babies.

Pictured right are Justin Counts, Gillian Hatcher, Melissa Abate and Nicholas Polizzano.



Pictured above are Gabrielle Schultz, James Flasser, Christopher Mathis, Nico Anjos and Leah Rowan.

### South Plainfield Observer

The South Plainfield Observer is published every Friday

G&G Graphics, Inc.  
1110 Hamilton Blvd. Suite 1B  
South Plainfield, NJ 07080

(908) 668-0010 • FAX (908) 668-8819

Web page:  
www.spobserver.com  
For subscriptions, advertising or information, call (908) 668-0010.

The publisher is not responsible for typographical errors.

NANCY GRENNIER  
Publisher/Editor  
WAYNE GRENNIER  
Associate Publisher  
SUSAN KANEPS  
Art Director/Associate Editor  
PATRICIA ABBOTT  
Staff Writer/Photographer  
CAROL GRENNIER  
Editorial Assistant  
Jenevieve DeLos Santos  
Staff Writer  
BOBBY HUNTER  
Sports Writer  
KENNETH MORGAN  
Correspondent  
ROXANNE CORTESE  
JANE DORNICK  
WILLIAM TUTHILL  
Advertising Sales

The South Plainfield Observer (U.S.P.S. 018253) is published weekly, except Thanksgiving week, by G&G Graphics Inc., 1110 Hamilton Blvd., Suite 1B, South Plainfield, NJ 07080-2004. Second class postage paid at South Plainfield, New Jersey 07080-9998. **POSTMASTER:** Forward change of address orders to G&G Graphics Inc., 1110 Hamilton Blvd., Suite 1B, South Plainfield, NJ 07080-2004. Subscription rates \$25 per year in South Plainfield; \$30 per year out of town. To subscribe: 908-668-0010.

### SUBMIT YOUR ARTICLES

We look forward to hearing from all of you and encourage you to send in your stories and photos. The *South Plainfield Observer* is your paper. Please let us know what you would like to see in it.

To get an article published in South Plainfield Observer:

1. Type (double spaced) the article you wish published.
2. Mail, fax or drop it at: Editorial Department  
South Plainfield Observer, 1110 Hamilton Blvd., Suite 1B, South Plainfield, NJ 07080 or drop it in the box at Mohn's Flowers on Plainfield Ave. or at (908) 668-8819 or e-mail us on our web page at spobserver.com or ggnan@aol.com or ngrennie@ix.netcom.com. Include your name, address, telephone number.

### LETTERS TO THE EDITOR

Letters may be submitted by mail to South Plainfield Observer, Editorial Dept., 1110 Hamilton Blvd., Suite 1B, South Plainfield, NJ 07080, by email at our website at spobserver.com or faxed to 908-668-8819. Letters should not exceed 400 words. We reserve the right to edit for clarity or length. It is the editor's discretion to limit the number of letters submitted by one individual on the same subject. The opinions expressed in "Letters" do not necessarily reflect the opinion of the Observer. Letters must be submitted with name and phone number, even if they request name their name be omitted when published.

### Don't Get Left Out!



Subscribe to the  
Observer, where  
South Plainfielders  
Get Their Local News!  
Call 908-668-0010

### FAST APPROVALS...GREAT RATES...PERSONALIZED SERVICE

We Specialize in No Cost Refinancing  
Free Pre-Qualifications  
Purchases • Refinance • Debt Consolidation  
Past Credit Problems Understood  
No Income Verification Loans  
Borrow up to 125% of Value • Loans  
Mixed Use and Commercial Properties



Se Habla Espanol



Mike Dixon  
President

Licensed Mortgage Broker - NJ Dept. of Banking

**908-822-0090**

2325 Plainfield Ave. Suite 2E South Plainfield, NJ



## Lakeview Plaza Wins Glitter Award



CBA President Joe Diegnan with Lakeview owners Irv and Jan Cyzner.

Irv and Jan Cyzner, owners of the Lakeview Plaza at Lakeview and Maple Avenues, accepted the South Plainfield Clean Business Association's Glitter Award recently. CBA President Joe Diegnan presented the award to the Cyzners in Ciccio's Pizza, one of the oldest tenants in the shopping center.

Cyzner Properties acquired the shopping center in 1989. It was origi-

nally built in the mid 1970's, replacing the former Shop-Rite supermarket. Mr. Cyzner has redeveloped the property over this past year because, he said, "It was time." He noted that they wanted to do their part in the downtown redevelopment efforts that have been improving the area. The Lakeview Plaza renovations, which included the façade, signage, parking lot and landscaping, were not

financed through the Borough's façade grant program however, but with private funds.

The Cyzners take pride in their property's appearance. Although they live in Colonia, they do not regard themselves as absentee landlords. They patronize their tenants' businesses by getting their prescriptions filled at the Medicine Shoppe and stopping in Ciccio's for a slice. Mr. Cyzner acknowledged that a shopping center with restaurants poses a special challenge with regard to litter control. New litter cans with eye-catching graphics were installed as part of the upgrade, and a cardboard compactor was added to the trash enclosure to help with recycling. The Plaza is swept every day by hand and the pavement is power-washed once a month. Workers also sweep up the dumpster area every day.

The CBA gives Glitter Awards to South Plainfield businesses that are unusually well maintained or have recently improved their appearance through renovation or landscaping. Membership in the CBA is open to all businesses that share its goals of enhancing the appearance of commercial districts through property maintenance and litter control. For more information, contact A. Tempel at (908) 226-7621.



## SPHS Jades Strut Their Stuff For Board of Education

The Jades performed Christmas tunes for the members of the Board of Education last week. They sang a variety of Christmas tunes to the delight of all attending. The Jades are an all male group of high school students. If you haven't heard them sing, make an effort to because they are

quite talented.

Jades Members are: Christopher Baron, Nicholas Green, David Garatino, Richard Muglia, and Chris Imbrosciano (juniors), Wajdi Kanj, and Josef Rodriguez (sophomores) and John Roesch and Mike Duquette (freshmen).

## southplainfieldpeople Milestones

### LeeAnn Errico Graduates From Kean University

LeeAnn Errico, the daughter of Gene and Janet Errico of South Plainfield, was a Fall 2001 graduate of Kean University.

LeeAnn graduated Summa Cum

Laude with a B.A. Degree in Communications.

She was a member of both the Lambda Pi Eta and Phi Kappa Phi National Honor Societies.

## Who's New in the South Plainfield Schools

There are several new faces to be found among the South Plainfield school system. New teachers were hired for Roosevelt School, and both the middle and high schools.

**Valerie Hunterton** can be found at Roosevelt School in the Resource Room working as the long-term substitute for Julie Flasser. She graduated Summa Cum Laude from Kean University with a BA as a teacher of the handicapped. Previous to her working at Roosevelt, Valerie taught in Cranbury, at Springfield Middle School, and at The Center School in Highland Park. As a staff member, she received a commendation from the

township recognizing her as a contributing member in helping the Cranbury School earn the National Blue Ribbon School of Excellence Award.

Married, with a six year old daughter who attends Kennedy School, Valerie is a life-long resident of South Plainfield. She enjoys reading, photography, boating, family activities and local sports.

**Ann Snee** is the eighth grade reading teacher at the Middle School. She graduated from Marymount University and Mallory College with a BA in Spanish. Monmouth University granted her three Masters degrees in

Reading, Special Education and Principal. Her certifications are as reading specialist, elementary teacher, special education, supervisor and principal. Before coming to South Plainfield, Ann taught at St. Mary's in South Amboy, East Brunswick and at Juvenile Detention in Passaic County.

Snee is a member of the Juvenile Conference and participates in local professional development committees. Her interests include skiing, hiking, antiquing and her three grandchildren. Last June, she and her husband completed the Santiago de Compostela Camino-a pilgrimage where they walked 500 miles across northern Spain.

**Carlos A. Vasquez** received his degree from the University of Santo Domingo in Public Administration. He participated in the FLAG program in Westfield and taught Spanish at the Scotch Plains/Fanwood Community School.

Soccer has taken up a good portion of his time. He was a soccer coach from 1990 through 1995, was a Gold Medal winner of the Eighth National Games in soccer, and was founder of the Las Americas soccer team in the Dominican Republic in 1973. When not involved in soccer, he golfs, plays tennis, enjoys history and is an accomplished chef.

**Ellie Fried**, is our newest SAC counselor and is based at Roosevelt School. Her degrees include a BA from Rutgers University, an MBA from Rider College and her SAC certification from Fairleigh Dickinson with a Masters in Counseling. In her time away from School, Ellie is involved with animal advocacy issues and pet adoption.



The Board of Education recognized students from Franklin School who held a fundraiser for the victims of the Sept. 11 attack. The students held a walk-a-thon honoring the police and fire departments' commitment and dedication. Members of both departments joined in the walk-a-thon and the students raised \$16,700. Pictured with Principal Nancy Erickson and teachers Louise Mruz and Marilyn Winston are Andrew Nguyen, Katie Scarinci, Samantha Pukash, Brandon Shaw, Gina Curcio, Catherine Krawicz, Megan Makowski and Brandon Downes.

## Recycling Drop-off Center Closed New Year's Day

The Recycling Center on Kenneth Ave. will be closed on Tuesday, Jan. 1 for New Years and will be open instead on Wednesday, Jan 2, from noon till 7 p.m.

Regular hours at Recycling are: Tuesdays 12 noon to 7 p.m. and Fri-

days and Saturdays 8 a.m. to 3 p.m.

The Yard Waste Site, at the end of Kenneth Ave., is open every Saturday from 8 a.m. to 3 p.m. It will not be affected by the holidays.

For updates, call the Recycling Hotline: (908) 226-7620.

All About Arts & Crafts

# "BUNCHI'S"

Your Hometown Gift Shop

179 Front St., South Plainfield, NJ

(Off Oak Tree Rd., South Plainfield Ave. & Maple Ave.)

**(908) 755-4049**

**Open 7 Days A Week!**

Mon-Sat: 9am-7pm

Sun.: 11am-4pm

- ❖ Personalized Books
- ❖ Handcrafted Candy Gifts
- ❖ Handpainted Home Accessories
- ❖ Handmade Soaps & Candles
- ❖ Russ Vintage Edition Collectables
- ❖ Unique Gifts For All Occasions
- ❖ Customized Specialty Home Accents
- ❖ Gift Certificates Available
- ❖ ARTS & CRAFTS CLASSES!

**BUNCHI'S BULLETIN**

**You ask for it, you got it!** As of February 2002, the "Arts & Crafts" lessons will be expanded to accommodate CHILDREN & ADULTS. For more information please call or visit us.

**Craft Birthday Parties** available as of February.

We accept all major credit cards and personal checks (w/ID)

## Aiello

Chiropractic Center, P.C.  
Your Hometown Source for Health & Wellness

2201 South Clinton Avenue, Suite H  
South Plainfield, NJ 07080-1471  
On the corner of New Market and South Clinton

**755-2289**

### Specialty Gift Baskets

Gourmet coffee, tea, popcorn, crackers and cheeses.

*Mohn's*  
Flowers & Fancy Foods



2325 Plainfield Ave.  
So. Plainfield, NJ (908) 561-2808  
Corporate Accounts Welcome.  
Major Credit Cards



# Around Town

## New Years Eve Gala at Polish Home

December 31

The Polish National Home, located on New Market Ave., will be holding their Annual New Years Eve Gala, Monday, Dec. 31.

The cost per couple is \$70 or \$40 per person and includes hats, noise-makers, open bar, cocktail hour, hot and cold buffet, midnight champagne toast, coffee and dessert. Music will be supplied by Nick L. Odeon. Ticket sales will be limited to only 200 people.

For reservations or information, call (908) 668-9442.

## Suburban Woman's Club Meeting

January 3, 2002

The January meeting of the South Plainfield Suburban Woman's Club will be held Thursday, Jan. 3 at 2 p.m. in the American Legion Hall on Oak Tree Rd.

The program will be "Open Space and It's Benefits." The speaker will be Mary Beth Cooney, project director of Morris Land Conservancy in Boonton.

For information on membership, call 561-1908.

## Roosevelt School Blood Drive

January 5, 2002

Roosevelt School is having a community blood drive being held on Jan. 5, 2002. Anyone interested in donating blood, please contact Theresa Montuori, (908) 769-5270 to schedule a time.

## Send Us Your Events:

Mail or drop off stories and photos to *South Plainfield Observer*, 1110 Hamilton Blvd., Suite 1B, South Plainfield, NJ 07080, or fax (908) 668-8819; or email to ggnan@aol.com.

## Photo Night Meeting Change

Due to unforeseen conflicts, the date of the Historical Society "Photo Night" at the high school must be changed to Wednesday, January 16, 7:30 p.m. Dr. Veit was just elected to another prestigious post and it conflicts with the previous date of Jan. 8.

The regular Tuesday Historical Society meeting will still take place on Jan. 8.

## VFW Country Breakfast

January 6, 2002

A Country Breakfast will be held on Sunday, Jan. 6 at the VFW Post #6763, located at 155 Front St. from 8 to 11 a.m. A varied menu is available.

The breakfast is sponsored by Pup Tent #41 Military Order of the Coorie. Proceeds go toward parties at Lyons VAMC.

For more information, phone (908) 668-9751 after 3 p.m. daily and after 12 noon on weekends.

## Borough Annual Reorganization Meeting

January 6, 2002

The Mayor and Council will be holding their annual reorganization meeting on Sunday, January 6, 2002.

Councilman Dennis Cerami will be sworn in as well as the newest council member, Charlie Butrico.

Nominations to the boards and committee will be made and members sworn in.

The public is invited and encouraged to attend.

## Rec Going to See "Naked Boys Singing"

February 3, 2002

For those who would like an alternative to watching football on Super Bowl Sunday, the South Plainfield Recreation Department is planning a trip to Broadway to see "Naked Boys Singing."

The trip takes place on Sunday, Feb. 3 and costs \$45 per person. Bus leaves the PAL at 11 a.m.

Register at the PAL, Monday through Friday.

## South Plainfield Recreation Winter Dinner Show

February 7, 2002

The South Plainfield Recreation Department will be sponsoring a trip to a Winter Dinner Show at the Hunterdon Playhouse on Feb. 7, 2002. The bus leaves from the PAL Building at 10 a.m. The fee is \$45 per person and includes dinner and the show.

Tickets can be purchased at the PAL, Monday through Friday from 8:30 a.m. to 5 p.m.

## AARP Plans Bus Trip To New Orleans

April 20-28, 2002

AARP Chapter 4144 is planning a bus trip to New Orleans from April 20-28, 2002 (9 days/8 nights). The trip includes deluxe motor coach transportation, hotels, tours in New Orleans, riverboat jazz cruise, dinner party, Bellin Garden and cruise in Alabama, Stone Mountain Park in Georgia and much more. Price is \$655 for double occupancy and \$855 for single occupancy.

For reservations and information, call Lee at (732) 968-6613 or Mary at (732) 752-3764.

## PAL to Sponsor trip to Broadway to see Oklahoma

March 9, 2002

The PAL of South Plainfield is sponsoring a trip to see Oklahoma! on Broadway. The trip is planned for Saturday, March 9, 2002. Ticket price is \$90 per person and can be purchased from the PAL, Maple Ave., on weekdays from 8:30 a.m. to 5 p.m. There are only 45 tickets available so get yours soon.

## — Out of Town —

## Seniors Fitness Program in Highland Park

January 2, 2002

Highland Park's premiere adult fitness program, Body Recall opens a new 30-week series on Wednesday, Jan. 2. Sponsored by the Department on Aging, classes meet in the Highland Park Reformed Church Gym-

nasium Monday, Wednesday and Friday at 8:30 a.m. or 9:30 a.m.

Without stressing the body, Body Recall develops strength, flexibility and balance, teaching participants the physical skills needed for long-term independent living. Both men and women are welcome in the classes.

The cost for the ten-week series is \$40 for Highland Park residents and \$50 for non-residents. Transportation to and from the classes is available as part of the regular free bus service of the Highland Park Senior Center. Information about registration is available by phone at (732) 545-7939 or (732) 846-0370, or at the Highland Park Senior Center.

The website of Highland Park's Body Recall is [www.geocities.com/bodyrecall](http://www.geocities.com/bodyrecall).

## Rainbow Experience Announces Auditions

January 11-14, 2002

Rainbow Experience, a community youth theater program in collaboration with The First Congregational Church of Westfield and United Church of Christ Congregational of Plainfield announce auditions for its 2002 production of "Once on This Island" for youths, seventh grade and up (adults are also welcome.) This year's production "Once on This Island" brings back the same creative team as last year's critically acclaimed production of *Godspell*. Auditions for "Once on This Island" will begin on Friday, Jan. 11 from 6:30 to 9:00 p.m. at the United Church of Christ, Congregational of Plainfield on 220 W. 7th St. (908-755-8658) and on Jan. 12 from 12:30 to 3:00 p.m. at the First Congregational Church of Westfield at 125 Elmer St. (908-233-2494.) Call-backs will be held on Monday, Jan. 14 at the Westfield Church from 6:30 to 9 p.m. Be prepared to sing, dance and read from the script.

A series of workshops entitled "How to Audition," will show first hand what to do and what not to do

at an audition. Professionals from theater, music and dance will be on scene to help participants and give advice for the future. The workshops are held at the United Church of Christ, 220 W. 7th St. on Wednesday, Jan. 9 from 6:30 to 9 p.m. The \$100 workshop is available for only \$10 thanks to funding, in part by the NJ State Council on the Arts. Reservations are required to attend this workshop and limited space is available. Call 908-755-8658 or 908-233-2494 before Jan. 7, 2002.

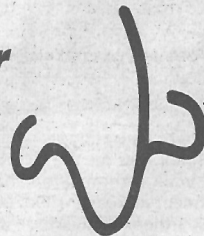
Funding for Rainbow Experience has been made possible in part by the New Jersey State Council on the Arts, Department of State, through a grant administered by the Union County Division of Cultural and Heritage Affairs.

"Once on this Island" is an exciting American musical with book and lyrics by Lynn Ahrens and music by Stephen Flaherty, the same team that brought us "Ragtime." "Once on this Island" is a tale of a peasant girl who has fallen in love with a boy in an upper class. This stage version of "The Little Mermaid" is told around a fire by a group of Caribbean peasants as they wait out a terrible storm. As the story unfolds, classic dramatic themes are exposed including class distinction, children pursuing their dreams despite their parents wishes, death, promises and the heart of the story, unrequited love.

Rehearsals will run from January into March. The actual production will be on March 9, 10 and on March 16, 17, 2002. The Rainbow Experience is intended to increase interaction between different groups of people in the area. Rainbow experience is proud to announce their creative team including; Producer-Shayne Austin Miller, Director-Patti Murtha, Music Director-Albert Ganter, Stage Manager-Ruth Sykes, and Choreographer-Sherri McLaughlin Ryan.

## Exciting Opportunities

Right under your nose.



Attract prospects where they live....right here in South Plainfield— where 21,000 people reside who are ready and willing to spend.

South Plainfield  
**Observer**

Call 908-668-0010 for details on advertising rates and discounts.

## How You Can Be a Part of the South Plainfield Observer.

**ENCOURAGE YOUR ORGANIZATION TO SEND US THEIR UPCOMING EVENTS.** We want to add them to AROUND TOWN. It can make your event more successful. Send them to us by mail, fax or e-mail.

**SEND US INFORMATION ABOUT YOUR MILESTONES,** i.e., promotions, births, engagements, weddings, anniversaries, graduations. Include photos. Share your good news with the community!

**IF THERE IS SOMEONE YOU KNOW WHO MAKES A DIFFERENCE** in South Plainfield? Thank them by letting us know.

**USE THE OBSERVER AS AN ADVERTISING TOOL.** Introduce your business to the community. Promote your specials or sales. Residents would rather patronize local businesses than travel out of town. It is more convenient and it's good for the local economy.

**SUGGEST A BUSINESS FOR US TO SPOTLIGHT.** If you have had great service in South Plainfield share it with your neighbors through the newspaper.

**SUBMIT LETTERS TO THE EDITOR** to allow readers to discuss and react to issues.

**SEND US YOUR PHOTOS.** If you have an event, take a photo, write a caption identifying the event and people and send it to us via mail. The best photos record action and don't include so many people that it is impossible to identify anyone. Please don't send us photocopies or laser prints. They don't reproduce well.

**HOW TO CONTACT US.** By mail: 1110 Hamilton Blvd., Suite 1B, South Plainfield, NJ 07080; By phone: 908-668-0010; By fax: 908-668-8819; By email: [ggnan@aol](mailto:ggnan@aol).

**SUBSCRIBE.** It's \$25. (in town) for one year!!





South Plainfield High School teacher Rich D'Urso, along with students Joanne Nguyen, Brittany Anne Hartman and Allison Vaughn.

## HS Students Raise \$10k For September 11 Victims

Students at the high school, under the direction of Rich D'Urso and Michael LoConte, made buttons depicting the world trade center and sold them for \$1. The buttons were produced one at a time and the students sold 5,000 buttons. Sara Crysanthopoulos, owner of VA Designs donated a matching \$5,000 and the students donated the \$10,000 to the Middlesex FAVOR Organization (Friends Assisting Victims of Terror).

Students involved in the button making were: Brian Acrin, Nicole Woo, Kaitlin Tomei, Jessica Liberty, Larry Dowdy, James Pickett, Jose Cruz, Andrew Falacco, Jim Curcio, Tommy Haus, Christina Frick, Billy Weaver, Allison Vaughn, Jen Curtis, Meg Mercurio, Danny Pollin, Jason

Jackson, Martin Diamant, Robert Berrone, David Allara, Justin Gaynor, Katherine Sylvester, Erika Heisler, Brittany Anne Hartman, Ashley Allacco, Kim Arms, Pat Brennan, Kristie Butrico, Megan Pulomena, Debby Soriano, Natasha Kurilew, Brielle Anderson, Chris Egan, Jenn Gold, Jaime Irber, Nathalie Londono, Ashley Madalene, Lance Smith, Mike Wiczorek, Bryan King, Joanne Nguyen, Jen Piwowar, Hollie Gaster, Jen Kertes, Jacquelyn Leigh, Destiny Owen, Phillip Veinott, Jim Bataille, Tom Campanella, Tarryn Carlen, Arielle Fumosa, Selina Giuliano, Mike Heyward, Jessa Jones, Marissa Judd, Danielle Lytwyn, Mike Butrico, CJ Diana, Kristen Mazellan.

From the South Plainfield Library

## Bookmarks

By Kenneth Morgan

Looks like we've got time for one last column of Library news before 2001 slips past.

The Library will be closed on Sunday, will close early at 1p.m. for New Years Eve, and will be closed on Tuesday in observance of New Years Day.

Our children's Storytime programs have been cancelled for next week. They'll return the following week.

We're between groups on the Video Circuit today. Next month's group should be ready for borrowing by the middle of next week. We're also between groups on the Large Print Circuit; a new batch of LPC books will be available shortly. Meanwhile, Monday is the last day of availability for the current group from the Audiobook Circuit. Audiobooks, both on cassette and CD, may be borrowed, four at a time, for two weeks.

We've got a few advisories to finish out the year. First of all, we know that a great many of you come out to the Library early and are just chomping at the bit waiting for us to open. All we ask is that you are careful regarding our main doors. Those doors are locked until our official opening time and not before. Some patrons, finding our doors secured, will nonetheless try to open them using the handicapped access control (a.k.a. "the button"). Please don't do that; it puts unnecessary strain on the latches and

won't cause us to open up any earlier. Just be patient; if we're scheduled to open that day, we will.

Second, a number of you are coming to us in search of items for use in a school project or report. We're more than willing to try to fill your needs, either through our own collection or via Inter-Library Loan. All we ask is that you allow us enough time to do this. If you come in needing an item in less than a day, the odds are good that you'll be disappointed. So, in such a situation, don't leave it to the last minute. Let us know right away and we'll do all we can to help you (short of actually writing the term paper, that is).

And, third, still on the subject of school reports, a number of you will probably want to use one of our word processors to type up said reports. Unfortunately, we've been having a few problems with them lately. At present, only one of them is in good working order. We hope to have the others repaired as soon as possible. Until then, though we don't impose a time limit on the word processors, we ask that you try to finish up as quickly as possible, allowing other patrons to use the machine. Thanks very much for your consideration.

That's about it for this issue. Have a happy and safe New Year, and we'll see you in 2002.

By the way, weren't we supposed to have reached Jupiter by this year?

## Cornerstone Architectural Group Secures Grant For Public Library Expansion

Cornerstone Architectural Group of South Plainfield, has successfully assisted the Borough of Middlesex in receiving an award of state funding for the expansion of the Public Library. The Middlesex Public Library located on Mountain Boulevard, will be expanded with an addition of 6,500 square feet. The design also calls for the renovation of the interior of the existing 7,500 square foot library.

New construction will add an expanded children's area with a glass enclosed reading room, a children's rest room, a larger reference and book area for children, a young adult area, additional public access computer work stations and new public meeting room to accommodate 130 people. The new meeting room can be divided into two rooms with a movable partition. This added flexibil-

ity will allow for two meetings at the same time. The expansion also creates space for an additional 20,000 books.

Cornerstone prepared the preliminary design drawings and construction cost budget that were submitted for review by the NJ Public Library Program Grant Program. Almost \$45 million in aid was recently made available to facilitate the construction and renovation of public libraries throughout the state. Middlesex Borough was one of seventy-three community libraries that had requested the funding.

Other current projects by Cornerstone include the new Department of Public Works Building in Man-

ville, classroom expansion for the Temple B'nai Tikvah in North Brunswick and the expansion of the Borough of Middlesex Municipal Building.

Consistently ranked as one of New Jersey's top 50 architectural design firms, Cornerstone Architectural Group provides professional design services in architecture, interior design, land planning and construction management. The firm employs a staff of eleven at its South Plainfield office. Founded in 1987 by Robert M. Longo, Michael G. Soriano and Robert F. Barranger, the firm specializes in design excellence for public and commercial buildings.

Subscribe online: [www.spobserver.com](http://www.spobserver.com)

908-561-0051

Oak Tree

Discount Wine & Spirits

902 Oak Tree Road, South Plainfield (Across from A&P)

Mon. Tues. Wed. 9-9  
Thurs. Fri. Sat. 9-10  
Sun 10-6

**MALIBU COCONUT RUM**  
\$10.99 750 ML

**KAHLUA**  
\$15.99 750 ML

**JIM BEAM**  
\$19.99 1.75 LITER

**GLEN ELLEN WHITE ZIN**  
\$3.99 750 ML

**SOUTHERN COMFORT**  
\$19.99 1.75 LITER

**BACARDI LIGHT AND GOLD RUM**  
\$16.99 1.75 LITER

**ABSOLUT VODKA**  
\$27.99 1.75 LITER

**BUY RITE LIQUOR**  
"The place for people of great taste"

**THIS WEEK'S BEER SPECIALS**

|   |       |  |       |
|---|-------|--|-------|
| MILWAUKEES BEST REG. LT OR ICE 12 OZ CANS                 | 8.99  | MOLSON CANADIAN, CANADIAN LIGHT, GOLDEN, ICE 12 OZ NR BTLS 2/12 PAK CASE | 15.99 |
| MILLER HIGH LIFE OR HIGH LIFE LIGHT 12 OZ CANS            | 10.99 | CORONA EXTRA OR LIGHT 12 OZ NR BTLS 2/12 PAK CASE                        | 19.99 |
| COORS (NON-ALCOHOLIC) 12 OZ NR BTLS OR CANS               | 10.99 | BECK'S, BECK'S DARK OR BECK'S LIGHT 12 OZ NR BTLS 2/12 PAK CASE          | 19.99 |
| J.W. DUNDEES HONEY BROWN 12 OZ NR BTLS 2/12 PAK CASE      | 14.99 | MIKE'S HARD LEMONADE 12 OZ NR BTLS 2/12 PAK CASE                         | 19.99 |
| ROLLING ROCK PREMIUM OR LIGHT 12 OZ NR BTLS 2/12 PAK CASE | 14.99 | TWISTED TEA 12 OZ NR BTLS  | 19.99 |
|   |       | AMSTEL LIGHT 12 OZ NR BTLS OR CANS                                       | 19.99 |

**THIS WEEK'S SPIRITS & CORDIAL SPECIALS**

|   |       |   |       |
|---|-------|---|-------|
| CHRISTIAN BROTHERS BRANDY 750 ML                | 7.99  | ROMANA SAMBUCA 750 ML                   | 16.99 |
| FLEISCHMANN PREFERRED 1.75 LITER \$3 MFG REBATE | 12.99 | ADMIRAL NELSON SPICED RUM 1.75 LITER    | 18.99 |
| BLACK VELVET 1.75 LITER                         | 12.99 | THE GLENLIVET SINGLE MALT SCOTCH 750 ML | 26.99 |
| SEAGRAMS GIN 1.75 LITER                         | 14.99 | BEEFEATER GIN 1.75 LITER                | 26.99 |
| GORDON'S VODKA 1.75 LITER                       | 14.99 | CHOPIN VODKA 750 ML                     | 26.99 |
| MARGARITAVILLE GOLD TEQUILA 750 ML              | 14.99 | REMY MARTIN VSOP COGNAC 750 ML          | 30.99 |
| CLAN MacGREGOR 1.75 LITER                       | 15.99 | JOHNNIE WALKER RED SCOTCH 1.75 LITER    | 31.99 |

**THIS WEEK'S WINE SPECIALS**

|  |      |  |       |
|--|------|--|-------|
| ARBOR VALLEY WHITE ZINFANDEL 1.5 LITER                             | 4.99 | LIVINGSTON CELLARS CAB SAUV, CHARD, MERLOT 3 LITER   | 8.99  |
| COOK'S BRUT OR EXTRA DRY CHAMPAGNE 750 ML                          | 4.99 | DOMAINE ST. GEORGE CAB SAUV, CHARD, MERLOT 1.5 LITER | 8.99  |
| NATHANSON CREEK MERLOT 1.5 LITER                                   | 5.99 | MONDAVI COASTAL CAB SAUV 750 ML                      | 8.99  |
| RENE JUNOT ROUGE & BLANC 1.5 LITER                                 | 5.99 | WALNUT CREST MERLOT 1.5 LITER                        | 8.99  |
| BALLATORE SPUMANTE OR ROSSO 1.5 LITER                              | 5.99 | CASILLERO DEL DIABLO ALL VARIETAL TYPES 750 ML       | 8.99  |
| STOCK SWEET OR DRY VERMOUTH 1.5 LITER                              | 6.99 | ALMADEN CAB, CHARD, MERLOT, WHITE ZIN 5 LITER BOX    | 10.99 |
| CORBETT CANYON RESERVE CAB SAUV, CHARD, MERLOT 750 ML              | 6.99 | WOODBRIDGE CHARDONNAY 1.5 LITER                      | 11.99 |
| JABOULET PAR 45 COTES DU RHONE 750 ML                              | 6.99 | FONSECA BIN 27 750 ML                                | 12.99 |
| IRONSTONE CAB SAUV, CHARD, MERLOT 750 ML                           | 7.99 | SANTA MARGHERITA PINOT GRIGIO 750 ML                 | 15.99 |
| ROSEMOUNT CHARDONNAY 750 ML  | 7.99 | VEUVE CLICQUOT BRUT NV YELLOW LABEL 750 ML           | 29.99 |
| FRANZIA CHABUS, BLUSH, BURG, RHINE, CHIAITI, CHILL RED 5 LITER BOX | 8.99 |  |       |

PRICES EFFECTIVE WED. DEC. 26th THRU MON. DEC. 31st

All prices subject to sales tax • We reserve the right to limit quantities • Not responsible for typographical errors •

MAC

DISC

VISA

MasterCard

Discover

**STG CHALK HILL CHARDONNAY 750 ML**  
\$9.99  
THIS 100% SINGLE VINEYARD CHARDONNAY OFFERS DISTINCTLY FRUITY AROMAS, CREAMY TEXTURE AND FULL BODY, WITH ATTRACTIVE OAK COMPLEXITY. THE WINE IS RIPE, RICH AND FLAVORFUL AND ELEGANTLY MADE.

**COLUMBIA CREST GRAND ESTATE CAB SAUV 750 ML**  
\$9.99  
SMOKE, SLIGHTLY GAMY FLAVORS ADD INTEREST TO THE BASIC BLACK CHERRY AND CURRANT IN THIS SOLID, BEAUTIFULLY PROPORTIONED CABERNET. A STYLISH RED, NICELY PACKED WITH FLAVOR, AND WITH NO HARSH EDGES. WINE SPECTATOR RATING 89 - APRIL 30TH, 2001

**COORS AND COORS LIGHT 12 OZ CANS**  
\$15.99 30 PAK

**BUD LIGHT 12 OZ NR BTLS 2/12 PAK CASE**  
\$13.99 CASE

**HEINEKEN 12 OZ NR BTLS OR CANS**  
\$19.99 CASE

**MILLER LITE, LITE ICE, GEN. DRAFT, GEN. DRAFT LT. OR ICEHOUSE 12 OZ CANS**  
\$15.99 30 PAK

**T.G.I. FRIDAYS BLENDERS ALL TYPES 1.75 LITER**  
\$13.99

**VILLA TREVI PINOT GRIGIO 1.5 LITER**  
\$7.99  
7.99 - 3.00 REBATE = 4.99 FINAL COST

**FREIXENET CORDON NEGRO BRUT CHAMPAGNE 750 ML**  
\$7.99

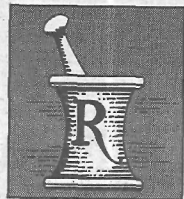
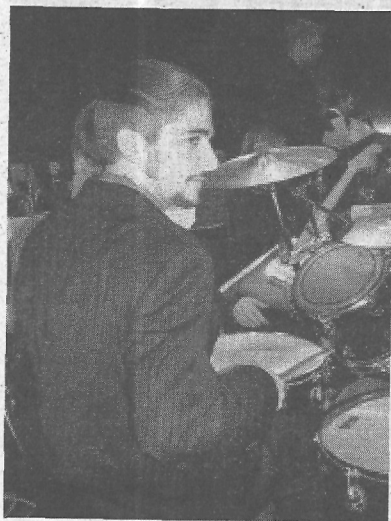
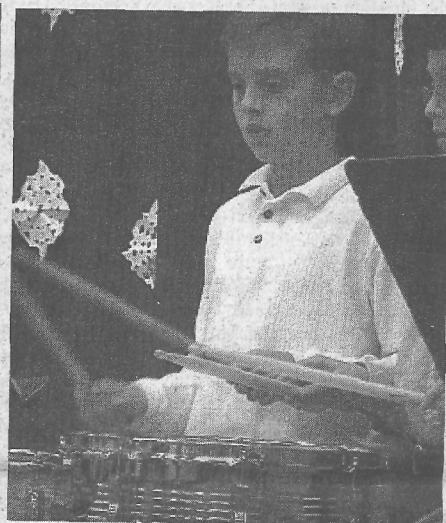
## MOVING?

Please clip this coupon and send in your change of address for your subscription to: South Plainfield Observer, 1110 Hamilton Blvd., South Plainfield, NJ 07080.

Name \_\_\_\_\_  
New Address \_\_\_\_\_  
Old Street Address \_\_\_\_\_



# The Voices of Our Students Were Heard



**Twin City  
Pharmacy**  
**755-7696**

1708 Park Ave., South Plainfield (Next to ACME)

**COMPLETE  
LINE OF**

**VITAMINS &  
MINERAL SUPPLEMENTS**  
*Featuring Solgar and Hudson*

Today's modern pharmacy with old fashioned values

- Free Delivery
- We Accept Most Major Medical Plans.
- Hospice Care & Home Healthcare Needs
- Diabetic Counseling & Supplies
- Direct Medicare billing for medical goods and equipment.
- Hallmark Cards and Gifts

*Happy New  
Year!*

**AIDA SANTOS**

ASSISTANT VICE PRESIDENT  
BRANCH MANAGER

**Valley National Bank**

Durham Ave. & Hamilton Blvd  
South Plainfield, NJ 07080

(908) 757-5868

Fax (908) 757-0494

**Advertise your  
business in the  
Observer for  
\$15 a week...  
Find out how.**

Call 908-668-0010

**WE'RE ALMOST READY....**  
TO SERVE YOU!

**HOMETOWN HEROS**

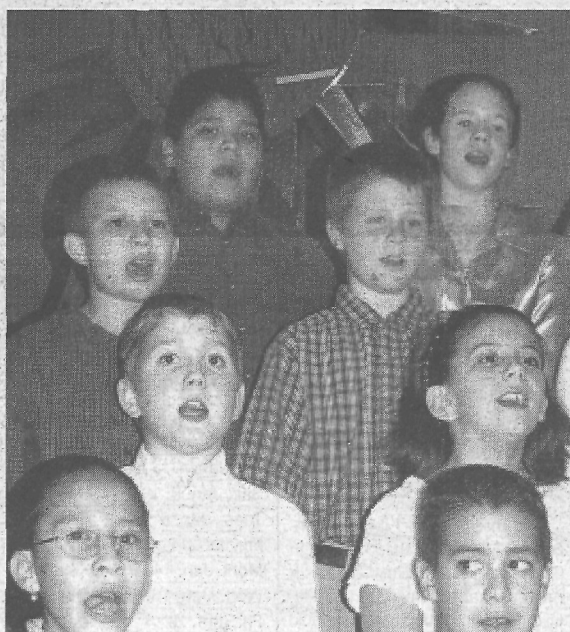
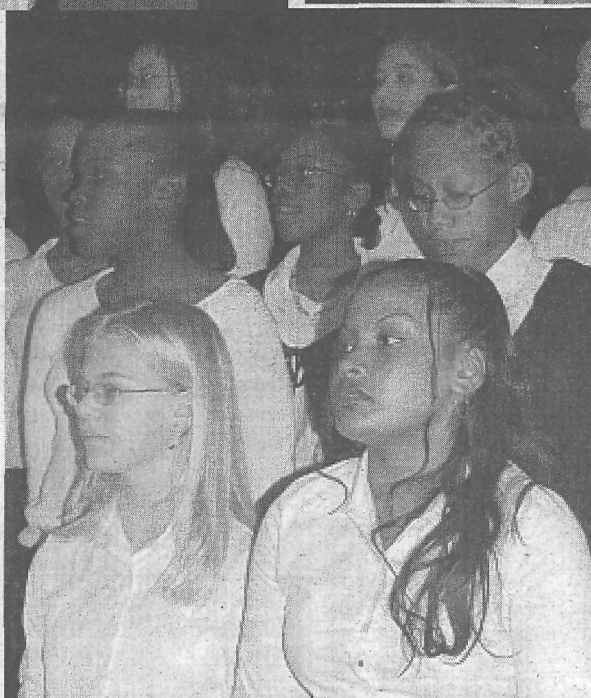
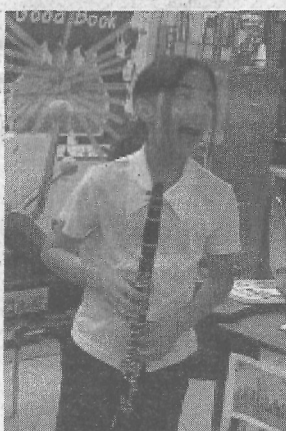
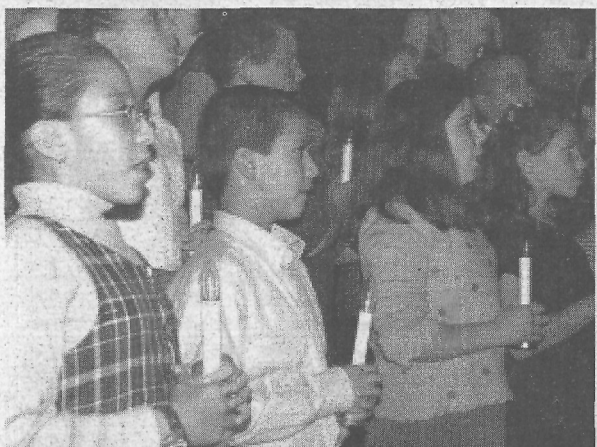
WILL BE OPENING SOON TO BRING YOU A WIDE  
VARIETY OF QUALITY PRODUCTS THAT WE'RE  
SURE YOU WILL ENJOY.... HAPPY HOLIDAYS!

908-755-HERO  
340 Hamilton Blvd.  
South Plainfield

**HOMETOWN HEROS**  
SUB SHOP • BAKERY • SALADS  
COFFEE • BREAKFAST  
LUNCH • CATERING



# Throughout South Plainfield in Song



Photos by Patricia Abbott and Jane Dornick

## Back Pain?

Edison, NJ- Most people have no idea what to do when they experience back pain; they use heat, ice, sleep on the floor, even take pain pills hoping their pain will go away. The more you don't know, the more likely you may experience serious disc or nerve injury. If you are tired of suffering and don't know what to do about it, there is a Free Eye Opening Report that just been released. For your free copy, call Toll-free 1-888-568-8424, 24 Hrs. Free Recorded Message.

### Physical Therapy Center of South Plainfield

- Orthopedic Rehabilitation • TMJ
- Back & Neck Pain
- Most Insurance Plans Welcome
- Most HMO's / PPO's Accepted
- Medicare Approved

Serving Union And Middlesex Counties For Over 15 Years

Lynne Glasser-Sward P.T. Lic# QA02309

**(908) 668-1951**

1110 Hamilton Blvd. • South Plainfield

### Annual New Year's Eve Gala

Monday, December 31, 2001

Hats • Noisemakers • Open Bar  
• Cocktail Hour: 9PM-10PM •  
Hot & Cold Buffet served at 10  
PM • Midnight Champagne  
Toast • Coffee & Dessert at 1AM  
• Music by Nick L. Odeon

Ticket sales limited to 200.

**\$70/couple or \$40/person**

**Get yours early!**

Polish National Home  
312 New Market Ave., So. Plainfield

Call 908-668-9442

For tickets/info

**RING IN THE NEW!**

*Dina S. Pascasio, DMD*  
*is pleased to announce the opening of*

**Oak Tree Dental, LLC**

*a new practice of General & Cosmetic  
Dentistry. Dina's goal is to provide  
quality dental care and to ensure  
continued good oral health.*

*She looks forward to seeing you  
at her new address at*

2177 Oak Tree Road, Suite 101 • Edison, NJ 08820

**(908) 757-7500**





# High School Vision 2001 Telethon Successful

South Plainfield Vision 2001 held a telethon over three nights earlier this month. The teams' results of the pledges donated for each night are as follows. A \$50 scholarship was given to the team with the most money at the end of each night.

Monday, Dec. 3: Ruple Patel and Krupa Patel, 22 pledges, \$180; Christina Sa and Jeremy Vesper, 19 pledges, \$180; Jessica Honeywell, 12 pledges, \$180; Kendall Green, five pledges, \$50. Scholarship winners of \$50 each included Ruple Patel, Krupa Patel, Christina Sa, Jeremy Vesper and Jessica Honeywell.

Tuesday, Dec. 4: Kendall Green and Marie Lombardi, 18 pledges, \$270; Ruple Patel and Krupa Patel, 25 pledges, \$170; Britney DeNizio and Lori Kushner, 21 pledges, \$223; Jeremy Vesper and Jessica Honeywell, 16 pledges, \$115; Sara Sukenik, 24 pledges, \$190; Chris Baron and Jaime Morris, 23 pledges, \$235. Scholarships of \$50 each were awarded to Kendall Green and Marie Lombardi.

Wednesday, Dec. 5: Jeremy Vesper and Alicia Pompey, 13 pledges, \$130; Christina Sa and Kendall Green, 37 pledges, \$475; Ruple Patel and Krupa Patel, 30 pledges, \$250; Sara Sukenik and Pat Cantarella, 40 pledges, \$350. Scholarships of \$50 each were given to Christina Sa and Kendall Green.

Scholarship winners receiving \$50 were Jessica Honeywell, Marie Lombardi, Jeremy Vesper, Ruple Patel and Krupa Patel. Christina Sa and Kendall Green each received \$100 for their efforts. These scholarships will be deposited in an endowment account and will be awarded upon graduation.

## Free Poetry Contest Open To Residents

The International Library of Poetry has announced that \$58,000 in prizes will be awarded this year in the International Open Poetry Contest. Poets from the South Plainfield area, particularly beginners are welcome to try to win their share of over 250 prizes. The contest is open to everyone and entry is free.

To enter, send one original poem, any subject and any style to The International Library of Poetry, Suite 19913, 1 Poetry Plaza, Owings Mills, Maryland 21117. The poem should be 20 lines or less and the poet's name and address should appear on the top of the page. Entries must be postmarked or sent via the Internet by Feb. 28, 2002. You may also enter online at [www.poetry.com](http://www.poetry.com).

# HIGH SCHOOL WINTER SPORTS SCHEDULE

## Basketball



### JUNIOR VARSITY & VARSITY BOYS BASKETBALL

|                 |                                       |      |            |
|-----------------|---------------------------------------|------|------------|
| Thurs., Dec. 27 | Oratory Prep                          | Away | 4:30 JV    |
| Fri., Dec. 28   | <b>Bound Brook Holiday Tournament</b> |      |            |
| Sat., Dec. 29   | <b>Bound Brook Holiday Tournament</b> |      |            |
| Sat., Dec. 29   | Oratory Prep                          | Away | JV         |
| Wed., Jan. 2    | Sayreville                            | Away | 5:30/7:00  |
| Fri., Jan. 4    | New Brunswick                         | Home | 5:30/7:00  |
| Tues., Jan. 8   | North Brunswick                       | Away | 5:30/7:00  |
| Thurs., Jan. 10 | J. F. Kennedy                         | Away | 5:30/7:00  |
| Tues., Jan. 15  | St. Peter's                           | Home | 5:30/7:00  |
| Thurs., Jan. 17 | Bishop Ahr                            | Home | 5:30/7:00  |
| Wed., Jan. 23   | Colonia                               | Away | 5:30/7:00  |
| Sat., Jan. 26   | Sayreville                            | Home | 11:30/1 pm |
| Tues., Jan. 29  | New Brunswick                         | Away | 5:30/7:00  |
| Thurs., Jan. 31 | North Brunswick                       | Home | 5:30/7:00  |
| Sat., Feb. 2    | J. P. Stevens                         | Away | 11:30/7:00 |
| Wed., Feb. 6    | J. F. Kennedy                         | Home | 5:30/7:00  |
| Mon., Feb. 11   | Ewing                                 | Home | 5:30/7:00  |
| Fri., Feb. 15   | Hunterdon Central                     | Home | 5:30/7:00  |

### GMC Tournament State Tournament

### FRESHMEN BOYS BASKETBALL 2001-2002

|                 |                   |      |       |
|-----------------|-------------------|------|-------|
| Thurs., Dec. 27 | Oratory Prep      | Away |       |
| Wed., Jan. 2    | Sayreville        | Away | 3:45  |
| Fri., Jan. 4    | New Brunswick     | Home | 3:45  |
| Tues., Jan. 8   | North Brunswick   | Away | 3:45  |
| Thurs., Jan. 10 | J. F. Kennedy     | Away | 3:45  |
| Thurs., Jan. 17 | Bishop Ahr        | Home | 3:45  |
| Wed., Jan. 23   | Colonia           | Away | 10 am |
| Tues., Jan. 29  | New Brunswick     | Away | 3:45  |
| Thurs., Jan. 31 | North Brunswick   | Home | 3:45  |
| Sat., Feb. 2    | J. P. Stevens     | Away | 10 am |
| Wed., Feb. 6    | J. F. Kennedy     | Home | 3:45  |
| Mon., Feb. 11   | Ewing             | Home | 3:45  |
| Fri., Feb. 15   | Hunterdon Central | Home | 3:45  |

### JUNIOR VARSITY-VARSITY GIRLS BASKETBALL

|                 |                                       |      |            |
|-----------------|---------------------------------------|------|------------|
| Fri., Dec. 28   | <b>Bound Brook Holiday Tournament</b> |      |            |
| Sat., Dec. 29   | <b>Bound Brook Holiday Tournament</b> |      |            |
| Wed., Jan. 2    | Sayreville                            | Home | 5:30/7:00  |
| Thurs., Jan. 3  | J. P. Stevens                         | Home | 5:30/7:00  |
| Tues., Jan. 8   | North Brunswick                       | Home | 5:30/7:00  |
| Thurs., Jan. 10 | Perth Amboy                           | Home | 5:30/7:00  |
| Sat., Jan. 12   | Delaware Valley                       | Home | 11:30/1:00 |
| Tues., Jan. 15  | J. F. Kennedy                         | Away | 5:30/7:00  |
| Thurs., Jan. 17 | Woodbridge                            | Away | 5:30/7:00  |
| Wed., Jan. 23   | Colonia                               | Home | 5:30/7:00  |
| Fri., Jan. 25   | Sayreville                            | Away | 5:30/7:00  |
| Mon., Jan. 28   | Bishop Ahr                            | Home | 5:30/7:00  |
| Thurs., Jan. 31 | North Brunswick                       | Away | 5:30/7:00  |
| Mon., Feb. 4    | J. F. Kennedy                         | Home | 5:30/7:00  |
| Wed., Feb. 6    | Perth Amboy                           | Away | 5:30/7:00  |
| Mon., Feb. 11   | Ewing                                 | Away | 5:30/7:00  |

### GMC Tournament State Tournament

### FRESHMEN GIRLS BASKETBALL 2001-2002

|                 |                 |      |       |
|-----------------|-----------------|------|-------|
| Fri., Dec. 28   | New Providence  | Away | 4:30  |
| Wed., Jan. 2    | Sayreville      | Home | 3:45  |
| Thurs., Jan. 3  | J. P. Stevens   | Home | 3:45  |
| Tues., Jan. 8   | North Brunswick | Home | 3:45  |
| Thurs., Jan. 10 | Perth Amboy     | Home | 3:45  |
| Sat., Jan. 12   | Delaware Valley | Home | 10 am |
| Tues., Jan. 15  | J. F. Kennedy   | Away | 3:45  |
| Thurs., Jan. 17 | Woodbridge      | Away | 3:45  |
| Wed., Jan. 23   | Colonia         | Home | 3:45  |
| Fri., Jan. 25   | Sayreville      | Away | 3:45  |
| Mon., Jan. 28   | Bishop Ahr      | Home | 3:45  |
| Thurs., Jan. 31 | North Brunswick | Away | 3:45  |
| Mon., Feb. 4    | J. F. Kennedy   | Home | 3:45  |
| Wed., Feb. 6    | Perth Amboy     | Away | 3:45  |
| Mon., Feb. 11   | Ewing           | Away | 3:45  |
| Tues., Feb. 19  | New Providence  | Home | 3:45  |



## Wrestling • Bowling • Track



### JUNIOR VARSITY & VARSITY WRESTLING Hunterdon Central Tournament

|                 |                                    |      |            |
|-----------------|------------------------------------|------|------------|
| Fri., Dec. 28   | East Brunswick                     | Away | 5:30/7:00  |
| Fri., Jan. 4    | South Brunswick                    | Away |            |
| Tues., Jan. 8   | Edison                             | Away | 5:30/7:00  |
| Fri., Jan. 11   | Livingston                         | Away | 5:30/7:00  |
| Mon., Jan. 14   | Kittatinny                         | Home | 6:00/7:30  |
| Wed., Jan. 16   | Old Bridge                         | Home | 6:00/7:30  |
| Fri., Jan. 18   | Delaware Valley                    | Home | 6:00/7:30  |
| Tues., Jan. 22  | South River                        | Home | 6:00/7:30  |
| Fri., Jan. 25   | Piscataway                         | Home | 6:00/7:30  |
| Sat., Jan. 26   | High Point                         | Away | 11:30/1:00 |
| Fri., Feb. 1    | <b>GMC Tournament @ Piscataway</b> |      |            |
| Sat., Feb. 2    | <b>GMC Tournament @ Piscataway</b> |      |            |
| Tues., Feb. 5   | Perth Amboy                        | Home | 6:00/7:30  |
| Thurs., Feb. 7  | Brick Memorial                     | Away | 5:30/7:00  |
| Tues., Feb. 12  | <b>Team Sectionals</b>             |      |            |
| Thurs., Feb. 14 | <b>Team Sectionals</b>             |      |            |
| Sat., Feb. 16   | <b>Group Finals</b>                |      |            |
| Fri., Feb. 22   | Districts                          | Home | 6:00       |
| Sat., Feb. 23   | Districts                          | Home | 11 am      |

### Regions Away State Championships Away

### BOYS AND GIRLS BOWLING 2001-2002

#### ALL MATCHES PLAYED AT CAROLIER LANES - 3:45 pm

|                 |  |  |
|-----------------|--|--|
| Wed., Jan. 2    | Middlesex                                      |  |
| Thurs., Jan. 3  | South River                                    |  |
| Mon., Jan. 7    | Mother Seton                                   |  |
| Tues., Jan. 8   | Carteret                                       |  |
| Wed., Jan. 9    | <b>GMC Individual Qualifying (2pm)</b>         |  |
| Thurs., Jan. 10 | Bishop Ahr                                     |  |
| Sat., Jan. 12   | <b>Joe Romer Memorial XXVI (1pm)</b>           |  |
| Tues., Jan. 15  | J. F. Kennedy                                  |  |
| Wed., Jan. 16   | <b>GMC Individual Finals (3pm)</b>             |  |
| Thurs., Jan. 17 | Monroe Township                                |  |
| Mon., Jan. 21   | South Amboy                                    |  |
| Tues., Jan. 22  | Colonia  |  |
| Thurs., Jan. 24 | St. Mary's                                     |  |
| Sat., Jan. 26   | <b>Central Jersey Winter Classic XXI (1pm)</b> |  |
| Mon., Jan. 28   | Franklin Township                              |  |
| Tues., Jan. 29  | <b>GMC Tournament 1st Round</b>                |  |
| Thurs., Jan. 31 | <b>GMC Tournament 2nd Round</b>                |  |
| Sat., Feb. 2    | <b>Girls Sectionals (9:30am)</b>               |  |
| Tues., Feb. 5   | <b>GMC Tournament Semi-Finals</b>              |  |
| Thurs., Feb. 7  | <b>GMC Tournament Finals</b>                   |  |
| Sat., Feb. 9    | <b>Boys Sectionals (9:30am)</b>                |  |
| Sat., Feb. 16   | <b>State Finals (9:30am)</b>                   |  |

### BOYS & GIRLS WINTER TRACK 2001-2002

|               |                           |           |
|---------------|---------------------------|-----------|
| Sun., Jan. 6  | State Relays @Princeton   | Away 9am  |
| Sun., Jan. 20 | State Groups @Princeton   | Away 9am  |
| Wed., Jan. 23 | Sayreville                | Away 3:45 |
| Wed., Jan. 30 | North Brunswick           | Away 3:45 |
| Sun., Feb. 3  | Championships @ Princeton | Away 11am |
| Wed., Feb. 6  | Perth Amboy               | Home 3:45 |
| Wed., Feb. 13 | Bishop Ahr                | Home 3:45 |

### East Brunswick Relays GMC Relays GMC Meet

### The Family Place

## Carousel Hair Salon

307 OAK TREE AVE  
SOUTH PLAINFIELD  
908-668-8397

Tues~Wed~Thurs~Fri  
8am-4pm  
Saturdays~6:45 am-3 pm  
Closed Sundays & Mondays

## Sacred Heart Church

149 South Plainfield Ave. So Plainfield, NJ  
Rev. John Paul Alvarado, Pastor

### New Year's Schedule

**Monday, December 31**  
7:00 p.m.: Vigil  
(New Year's Eve)

9:00 p.m. First Watch  
with Mass at Midnight

**Tuesday, January 1, 2002**  
9:00 a.m. 12:10 p.m.





# Sports

By Kevin Lykes



## juniorbaseballclubnotes

### WINTER REGISTRATION FOR 2002 SEASON!

Our annual Winter registration for the upcoming 2002 baseball season here at the SPJBC will be held on Thursday and Friday, Jan. 10 and 11 from 6 to 9 p.m.; also on Saturday, Jan. 12 from 10 a.m. to 4 p.m., at the SPJBC Complex. All new players must bring a birth certificate and all registrants must be accompanied by a parent or guardian. Winter fees are \$60 single, \$90 double, and \$110 for three or more. At this time we will also be accepting registration for new umpires, managers and coaches.

### SPECIAL NOTE TO ALL MEMBERS:

- This will be your last opportunity to register for the 2002 season without paying late registration fees, or facing possible waiting lists.
- Also, a new bylaw passed this year prohibits any new players from joining a team after May. So there is no sense in waiting until the last minute.

*Coaches clinics are continuing* with the next one scheduled for Tues. Jan. 8, 2002 at 7:30 at the complex. This month's featured speaker will be Bill Leahman, former major league pitcher with the Chicago White Sox. Bill will be discussing pitching and practice organization. Previous clinics will be conducted by Bill have been very educational.

*Our fundraiser for the WTC 9-11 disaster* will continue with the sale of ribbon pins, flag pins and flag decals at the January registration. Pins are \$3.00 and flag decals \$1.00. Thus far we have covered our expenses and are generating a profit from this sale which will go the NYC Police & Fire Widows and Orphans Fund. We are hoping to reach the \$2,000 mark which will be matched by the Baseball Hall of Fame in Cooperstown, NY.

Ladies Auxiliary will begin their Gertrude Hawk Candy Fundraiser at our January registration.

### IMPORTANT UPCOMING DATES TO TAKE NOTE OF:

- Monday, Jan. 7, 7:30 p.m.: General Meeting
- Tuesday, Jan. 8, 7:30 p.m.: Coaches Clinic featuring former major leaguer Bill Leahman discussing pitching and practice organization.
- Thursday, Friday, Saturday, Jan. 10, 11, 12, Winter Registration; times: Thurs. and Fri., 6-9 p.m., Sat. 10 a.m.-4 p.m., (tentative). This is also registration for managers, assistant coaches and NEW umpires.
- Monday, Feb. 4, 7:30 p.m. General Meeting
- Tuesday, Feb 12, 7:30 p.m. Coaches Clinic, topic TBD
- Monday, Feb 25, 6:45 p.m. Rutgers Certification course, (Certification Required for all Managers and Assistant Coaches)
- Week of Feb 26 to March 1, League Manager meetings
- Saturday March 2, tryouts at PAL, (Small Fry only)
- Week of March 4, Draft nights/player notification
- Monday March 4, 7:30 General Meeting
- Tuesday, March 12, 7:30 p.m. Coaches Clinic, at SPSHS practice, site to be determined
- Saturday, March 16, 9:30 a.m., "C" League Orientation, Field 1
- Monday, April 1, 7:30 General Meeting
- Thurs., Fri., Sat., April 4-6, Booster Weekend (All Small Fry players)
- Saturday, April 13, OPENING DAY!

### www.spjbc.com NOW ONLINE AND FUNCTIONING!

<http://www.spjbc.com> is now up and running. You can check our new website to stay updated on club activities, (coaches clinics, meetings, umpire training classes, tryouts, etc.) and a lot more, including schedules, rosters and standings, once the season gets into gear. You are also able to participate in trivia contests and even see our complex from an aerial view.

### Elks Selling Entertainment Books

The South Plainfield Elks Veterans Committee is selling the Entertainment Book for \$30.

Please contact Lou Peralta at (908) 756-6406.

Log on to the

**Borough of South Plainfield's  
official web site at  
[southplainfieldnj.com](http://southplainfieldnj.com)**

Visit your community web site for the latest local news on

- Mayor and Council
- Planning Board & Board of Adjustment Agendas
- Police - Fire - Rescue Squad
- Recreation
- Youth Activities
- Senior Corner
- Professional & Business Directory
- Community Bulletin Board
- Civic Organizations
- Election Results
- and more

Advertise your business and support on  
South Plainfield's own web site

For rates or information email at: [southplainfieldnj.com](mailto:southplainfieldnj.com)  
Or call 908-226-7656

## BOWLING

By Ralph Fech

### Girls Knock Off Mother Seton Regional and Cardinal McCarrick; Bumped by Colonia

The girls bowling team had enough fire power to take the measure of perennial nemesis, Mother Seton Regional as the Tigers won 2 of 3 games to pin a 3-1 defeat on the Terriers. Tiger Vicky Boley led all

scorers with games of 209-196-238 for an outstanding set of 643.

The pre-season favorite Colonia team sizzled as they cruised to a three game sweep over the Tigers who were never in contention. High for

South Plainfield were Vicky Boley 194-202, Meredith Cooper 162 and Kim Gaub with a 160 game.

The girls shelled Cardinal McCarrick as they rung up a 415 pin advantage with a solid team effort. Alexis Montanaro rolled 181-193-169 for a solid 543 set. Chipping in were Kim Gaub 166-190, Vicky Boley 177-163, Danielle Larish 166 and Meredith Cooper 166.

The girls team stands in third place in the White Division with a record of 6-3.

### Boys are Crushed by Colonia; Tie Cardinal McCarrick

Freshman Matt Boley was the high pin attacker for the Tigers with games of 211-180-174, as defending champion Colonia swept all three games in an awesome display of accuracy. George Kleinknecht chipped in with 160-170 games.

The boys bowling team rebounded and won two of three games from Cardinal McCarrick, but they had to settle for a 2-2 tie as they lost the total wood count against a veteran Eagle squad.

Leading the Tigers were Matt Boley, who fired games of 213-196-210 for a 619 set and teammate Shawn Ferguson who rolled games of 187 and 171.

The boys team record stands at 3-4-1 in the tough White Division.



OUR LADY OF CZESTOCHOWA CHURCH

### Christmas Schedule

|                            |   |
|----------------------------|---|
| Dec. 28 & 29               | Mass at 9:00 a.m.                             |
| Dec. 29 • 5:30 p.m.        | Feast of Holy Family                          |
| Dec. 30 • 8 a.m. & 11 a.m. | Feast of Holy Family                          |
| Dec. 31 • 9 a.m.           | 7th Day in Octave of Christmas                |
| Dec. 31 • 5:30 p.m.        | Vigil Mass-Solemnity of Mary - New Year's Eve |
| Jan. 1 • 10 a.m.           | Solemnity of Mary - New Year's Day            |

**807 Hamilton Blvd., South Plainfield**

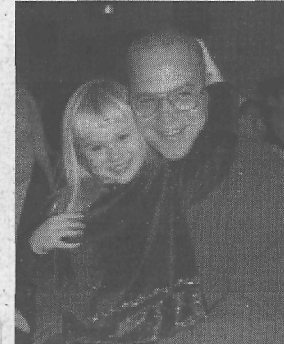




There's  
a lot  
going on...



... In  
South  
Plainfield!



Subscribe  
to the  
Observer!



**South Plainfield  
Observer**  
908-668-0010



Send a check or money order for \$25/one year (out-of-town-\$30) payable to: South Plainfield Observer, 1110 Hamilton Blvd., Suite 1B, South Plainfield, NJ 07080. Or order your subscription via email at [nancyg@spobserver.com](mailto:nancyg@spobserver.com) and send your check to the above address.

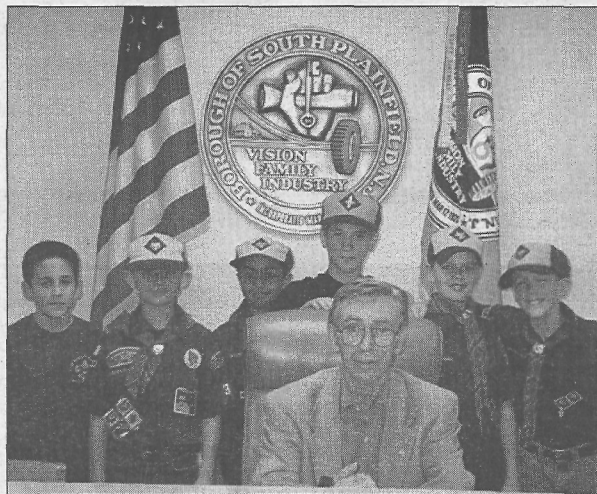
☒ Please send me home delivery of the Observer.

NAME

ADDRESS

PHONE NUMBER





## Mayor Dan Gallagher Visits Cub Scout Pack 324

South Plainfield Mayor Daniel J. Gallagher met with the local Cub Scout Den (Den 5, Pack 324) recently to discuss how the local and county government operates.

The Cub Scouts met with the Mayor to satisfy one requirement of the "Citizen" activity badge — to meet with a local leader. The first year Webelos learned how the local government is formed and a brief discussion of what each council member and Mayor is responsible for.

The Mayor answered wide ranging questions from how to be good citizens, how many police cars the town

operates, what can the scouts do to help their town, to when will a Wendy's and/or KFC restaurant open in South Plainfield. The Mayor closed his discussion by inviting the scouts to attend a Council meeting to help them better understand how the local government operates.

Scouts pictured from left to right are: Ray Coletta, Mathew Santos, Jimmy Bijlani, Johnny Bullock, Steven Grzenda, and Logan Green. Scout Kevin Simms is not in the picture. Picture submitted by Den 5 Leader Vijay Bijlani.

## Santa Flew Through Town in a Fire Truck

When Santa Claus comes to town, he does it in a big way. Prior to Christmas, Santa visited dozens of South Plainfield youngsters. The man of the hour traveled by fire truck complete with blinking Christmas lights. As he stopped at each home he called the children by name and presented them with a gift.

South Plainfield Fire Department's Project Santa 2001 is a holiday fundraiser which provides residents with a way to support the department and surprise their children with a visit from Santa at the same time. Parents were asked to make a \$20 donation to the fire department and to provide a wrapped gift. Santa and his elves did the rest. Over the course of four nights, fire engines chauffeured Santa and his bag of goodies all across town. The children were delighted to see Santa come down their street and give out the gifts.

With so many homes to visit Santa was on a tight schedule, but parents always managed to keep him just long enough to snap a few photos. Project Santa is in its fourth year. The Santa Project's greatest gift had no ribbons, nor wrapping paper; it was the gift of unspoken support of local heroes, the volunteer firefighters of South Plainfield.



TAX RETURNS PREPARED • WILLS, CLOSINGS  
INDIVIDUAL AND BUSINESS • PERSONAL INJURY  
WORKERS COMPENSATION

**PAUL W. GRZENDA**  
CERTIFIED PUBLIC ACCOUNTANT  
ATTORNEY AT LAW

HOUSE CALLS AVAILABLE  
SO. PLAINFIELD OFFICE Tel.: (908) 769-8602



(908) 561-8000

**McCriskin**  
**HOME FOR FUNERALS**

2425 PLAINFIELD AVENUE  
South Plainfield, NJ 07080  
FAX (908) 561-6744

RICHARD W. MCCRISKIN, Pres., Mgr.  
William C. McCriskin, V. Pres., Dir.  
James A. Gustafson, Dir.  
James F. Connaughton, Assoc. Dir.



*James W. Conroy*  
*Funeral Home*

*Serving the Area Since 1949*

**"Because We Care"**

- Forethought Funeral Planning
- N.J.D.A. Choices
- Complete Care Financing
- Serving All Faiths
- Cremation Services
- Pre Arrangement Specialists

**ROBERT HUNTER JR.**  
Owner-Manager  
**756-2800**

2456 Plainfield Ave.,  
South Plainfield  
www.conroyfuneralhome.com

*"Consult the Families We Serve"*

## Red Cross Reports Severe Blood Shortage After the 9/11 Surge of Donations

Despite the surge of blood donations after the World Trade Center attacks over two months ago, New Jersey Blood Services (NJBS) blood inventory is now reaching dangerously low levels. "We curtailed donations by asking those who want to donate for the 9/11 tragedy to postpone their donations. We did this to avoid the need to discard blood that would not be used," states John Giandelone, Executive Director of New Jersey Blood Services. Since blood is perishable with a short shelf life, blood donated in September is no longer usable and we must replenish our inventory on a daily basis with fresh blood. By giving blood today, the patients who need blood in the coming weeks will be able to get a life saving transfusion. Deciding to further postpone a blood do-

nation puts these patients at risk.

"We hope our donors understand that blood is highly perishable, with red cells having only a 42-day shelf life and platelets only five days. This is why we need new donations every day. We must ensure that a safe and adequate fresh blood supply is always available to meet hospital patient demand," adds Giandelone.

Historically, the New Jersey community has a very low blood donor participation rate. "We hope we can keep alive the spirit of generosity and support for others that we all witnessed after Sept. 11. Seeing people continue as blood donors would be an appropriate and enduring memorial to those we lost in the World Trade Center attacks," commented Giandelone.

Blood is needed every minute of every day by hundreds of patients in New Jersey area hospitals. Cancer patients, burn and accident victims, premature babies and surgery and transplant patients are just some of those who need life-saving transfusions. It is also important to have the right blood type mix on hand at area hospitals. New Jersey required a blood inventory rich in Types O and B, blood types common to many minorities who make up the areas that have diverse populations.

Inadequate blood supplies can lead to cancelled surgeries, hospital emergency room closures or giving mismatched transfusions to patients, which can lead to severe medical complications. Executive Director Giandelone is urging all who are eligible to donate blood and/or platelets during December to please do so. This will help meet a traditionally high holiday season demand for blood products and offset usual lackluster year-end donations.

Almost anyone can be a life-saving hero. Blood donors must be between the ages of 17, with parents or guardians' permission as well as proof of age and 75. You must weigh over 110 pounds and be in good general health. The blood donations process takes less than an hour and includes a free mini medical exam (temperature, iron count, pulse rate and blood pressure).

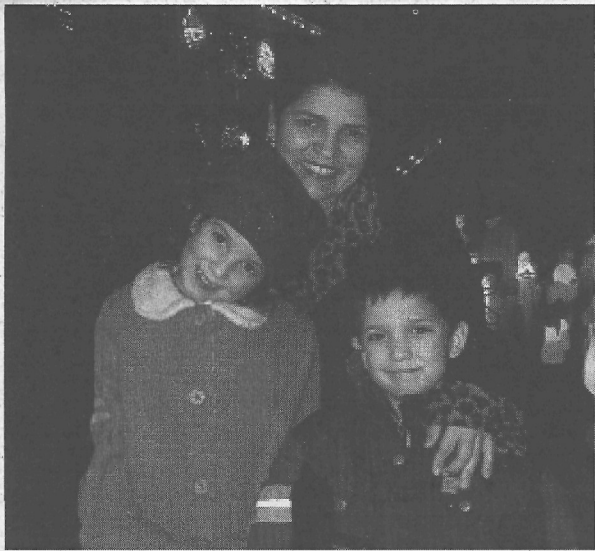
New Jersey Blood Services is the blood center serving 13 counties and 560 New Jersey hospitals. In order to do this the Center must collect approximately 90,000 units of blood annually and conducts an estimated 200 blood drives a month within the area it serves. Anyone wishing further information on giving blood or setting up a blood drive is encouraged call NJBS at 1-800-933-BLOOD.

### Beauty

Hillside Cemetery's gentle slopes are dotted with stately trees and evergreens. Flowering trees and bushes accent the grounds. The serene landscape is meticulously attended and renowned for its care and upkeep. All lots are fully developed areas and include perpetual care. Located on Woodland Avenue in Scotch Plains, a non-profit organization. 908.756.1729

**Hillside Cemetery**  
www.hillsidecemetery.com





## Christmas Spirit Continues on Ritter Ave.

For more than 15 years, Al Mitchell and his wife Pat Stilo-Mitchell have decorated their house on Ritter Ave. for Christmas with hundreds of lights, lots of figures and decorations and they also host an open house to the public.

Every night, cars loaded with children can be seen driving by the house to see this Christmas spectacular.

Once again this year, Al and Pat held their annual "Santa Night." Santa (Al) makes sure he spends quality time listening to each child and they each receive a special present from Santa. Meanwhile, Pat hands out hot chocolate and cookies. This year, despite the rain, kids and parents were lined up the entire evening enjoying the spirit of the event.

Aside from the many decorations on the lawn, house and roof, the garage contains a lighted vil-



lage and Christmas music plays in the background.

This is an example of the true spirit of Christmas, which is enjoyed by all the children and their parents in South Plainfield.

## Winter's Coming...

Get Home Delivery of the Observer-908-668-0010

## Legal Notices

### BOROUGH OF SOUTH PLAINFIELD

December 20, 2001

Public Notice is hereby given that the following action was taken by the South Plainfield Zoning Board at its meeting held on December 18, 2001.

A. Case #73-01—James Borgese—Block 188; Lot 60.01; R-10 Zone, 263 Pearl Place—Applicant's request for a lot coverage variance for a 10' x 12' addition on a 10' x 12' wood deck, was hereby GRANTED.

B. Case #67-01/S—Sprint Spectrum—Block 254; Lot 27; M-3 Zone; 330 Oak Tree Ave.—Applicant's request for a use variance and site plan approval to install six panel antennas on the existing Hall's telecommunications tower, was hereby GRANTED.

C. Case #42-00S—AT&T Wireless Services—Block 450; Lot 2 & Block 458; Lots 1 & 7; 1500-A Seymour Ave.—Applicant's request for a use variance and site plan approval to install antennas on the existing Nextel tower, was hereby GRANTED.

D. Case #9-01/s/v—Harris Realty—Block 286/293; Lots portion of lot 1 & all of lot 3; lots 2 & 4; M-3 Zone; Roosevelt Ave.—Applicant's request for a use variance and site plan approval for an expansion of a non-conforming use, was hereby GRANTED.

E. Case #10-01/S/V—Harris Realty Co.—Block 286; portion of lot 1 & all of lot 6; M-3 Zone; Roosevelt Ave.—Applicant's request for a use variance and site plan approval for an expansion of a non-conforming use, was hereby GRANTED.

\$34.00 December 28, 2001

### BOROUGH OF SOUTH PLAINFIELD

Ordinance No. 1440N

BE IT RESOLVED BY THE GOVERNING BODY OF THE BOROUGH OF SOUTH PLAINFIELD, MIDDLESEX COUNTY, NEW JERSEY, THAT:

Ordinance #1440N entitled: AN ORDINANCE AMENDING ORDINANCE #1440E ENTITLED: AN ORDINANCE PROVIDING FOR THE COMPENSATION OF EMPLOYEES OF SOUTH PLAINFIELD AND THE METHOD OF PAYMENT OF SUCH COMPENSATION FOR THE YEARS 2001 THRU 2005 was presented for adoption after a public hearing was held thereon by the Mayor and Borough Council on Wednesday, December 19, 2001 in the Municipal Building, South Plainfield, New Jersey 07080.

ATTEST:

Vincent Buttiglieri/Municipal Clerk

\$18.00 December 28, 2001

### BOROUGH OF SOUTH PLAINFIELD PUBLIC NOTICE

#### RETURN OF PERFORMANCE GUARANTEE

TO: Mr. Larry Massaro  
FOR PUBLIC IMPROVEMENTS LOCATED AT  
439 Delmore Avenue  
South Plainfield, New Jersey 07080  
LOT #3.02 BLOCK#363

A public meeting has been scheduled by the Mayor and Council of the Borough of South Plainfield to hear objections, if any, to the release of a Performance Guarantee posted by Mr. Larry Massaro for public improvements at 439 Delmore Avenue, South Plainfield, New Jersey 07080, known as Lot #3.02, in Block #363 listed on the official maps of the Borough of South Plainfield. Said public hearing will be held 7:00 PM Monday, January 14, 2002 in the Council Chambers of Borough Hall, 2480 Plainfield Avenue, South Plainfield, New Jersey 07080.

Name: Mr. Larry Massaro  
Address: 35 Davis Street  
South Plainfield, New Jersey 07080-1429

\$35.00 December 28, 2001

## policereport

• On December 18, Commerce Bank on Durham Ave. reported that two laptop computers had been taken overnight.

• An employee of Central Career School on Corporate Blvd. reported that her purse had been taken from the office.

• On Friday, a Grant Ave. resident reported that two bicycles had been taken from the shed in the rear of the property. A Plainfield resident was later arrested with the stolen bikes.

**Deadline For  
Classified Ad  
Submissions is  
Monday, 5 p.m.**

# Classifieds

**Rates -- 3 line minimum-\$11, \$1 ea. additional line.**

### HELP WANTED

FLORAL DESIGNER FT/PT Exp. necessary. Mohn's Flowers (908) 561-2808.

### FLOOR SERVICES

WOOD FLOOR REFINISHING—Hardwood floor refinishing, 79 cents per sq. ft. min. Free estimates. 908-617-1657.

### WANTED

**SWORDS & OTHER  
MILITARY ITEMS  
AL (908) 668-5851**

### WANTED

RECORDS WANTED. CASH paid for your record collection. LP's & 45's. 1950's to present. Call (908) 756-5962.

### ROOFING

COMMERCIAL, INDUSTRIAL, Residential. 908-753-4222.

### MORTGAGES

FAST, APPROVALS, GREAT rates, personalized service. 908-822-0090.

### CONTRACTORS

BUILDER, CONTRACTOR, ADDITIONS, Kitchens, Bathrooms, Office Renovations. 908-753-3850.

### COMPUTER SERVICES

UPGRADES, HARDWARE/SOFTWARE installation, in-home services. Call 908-769-0709

### FOR SALE

DIGITAL CAMERA-SONY MAVICA, older model, needs battery charger. Works with floppy disks. Best Offer! Call 756-8011 leave a message or email angelonely@aol.com.

SONY CD-REWRITABLE RECORDER, 4X-R Write, 2X cd-RW Write. For USB equipped systems. BRAND NEW, never used. Best offer. Call 756-8011 leave a message or email angelonely@aol.com.

# Business & Professional

**To advertise,  
call 908-668-0010**

### ADVERTISE YOUR BUSINESS IN THIS SPACE FOR ONLY \$15 PER WEEK (908) 668-0010

### COMPUTERS

#### ST Computers

Stan Wilkinson   
• New Computers/Upgrades  
• Hardware/Software Installations  
• In Home Service  
• Some Used Computers Available

Phone: 908-769-0709  
Cell: 732-423-3504  
Email: st-computers@home.com

### ROOFING

#### J.T. PENYAK ROOFING CO.

COMMERCIAL INDUSTRIAL  
RESIDENTIAL

908-753-4222

FAX 908-753-4763

124 CAMDEN AVE.  
SO. PLAINFIELD, NJ 07080

### CONTRACTORS

#### BUILDER & GENERAL CONTRACTOR

NJ DCA LIC #019771  
Since 1981

**Lordina Builders**  
908-753-3850

ADDITIONS-KITCHENS -  
BATHROOMS -  
Office Renovations

FREE ESTIMATES

### MULCH/TOP SOIL/STONE

Call

**KLK Trucking for:**

Top Soil, Mulch, Sand, Infield  
Mix, Decorative & Crushed Stone

Sanding • Salting • Snowplowing  
Pick up or Deliv., Mon. thru Sat

**908-757-4434**

265 Ryan Street  
South Plainfield

### MORTGAGES

**FAST APPROVALS...  
GREAT RATES...  
PERSONALIZED SERVICE...**

  
**Colon Mortgage**  
Mike Dixon,  
President  
Licensed Mortgage Broker - NJ Dept. of Banking

**908-822-0090**  
2325 Plainfield Ave., Suite 2E  
South Plainfield, NJ  
Se Habla Espanol

### HAIR & NAILS


  
**Matrix  
Hair & Nails**

• Manicure • Pedicure • Acrylics  
• Tips • Fill in • Airbrushing  
• Nail Art • Wraps • Waxing

**\$2 OFF ANY HAIR OR NAIL SERVICE**

Hours: Mon-Fri 9am-8 pm, Sat. 8:30 am-7 pm  
154 Maple Ave., So. Plainfield, NJ  
(908) 755-9040

### MASSAGE

  
**Central Jersey  
Holistic Health Care**  
2701 Park Avenue, South Plainfield, New Jersey 07080  
Roxanne Cortese, CUPCHT  
Certified Holistic Practitioner

A PROFESSIONAL NAME CHANGE  
To my PAST, PRESENT and FUTURE Clients:  
Please be advised of my business name change from "Solari Holistic  
Health Care Center" to "Central Jersey Holistic Health Care".  
Health Center continuing to provide and service my clients needs in the  
holistic field.

MASSAGE • HYPNOSIS  
REFLEXOLOGY • REIKI  
HOLISTIC MASSAGE  
CUPCHT Certified Available

(908) 561-1511

### PRINTING/TYPESSETTING

  
• Invitations  
• Brochures  
• Resumes  
• Flyers

**G&G GRAPHICS**  
1110 Hamilton Blvd., Suite 1B  
South Plainfield, NJ 07080  
908-668-0010 • Fax: 908-668-8819  
email: ggnan@aol.com

### SPIRITS

  
**Sal's Spirit Shoppe**  
1645 Park Avenue,  
South Plainfield  
**791-9463**

Cavit (1.5 liter)  
Pinot Grigio ..... \$9.99 Mon.-Sat.  
Estate Cellars 9am-1am  
White Zinfandel Sundays  
(750ml) ..... \$3.49 1am-7pm  
(1.5 liter) ..... \$5.49

Bring in this ad for 10% off on wines





*To those who  
supported us...*

*The South Plainfield Observer  
would like to offer sincere  
thanks to our readers, our  
advertisers, staff & all our  
many contributors in 2001.*

*We wish you peace in  
the New Year.*