

SPFLD. PUBLIC LIBRARY
2484 PLAINFIELD AVE
S. Plainfield NJ 07080

SPFLD. PUBLIC LIBRARY
2484 PLAINFIELD AVE
SOUTH PLAINFIELD, N.J. 07080
07 2000

South Plainfield Observer

VOL. 3, NO. 31

50 CENTS

APRIL 7, 2000



The three "Tommys" at ages 20, 10 and four (top to bottom) Jason Kollarik, Chris Imbrosciano and Jake Butynski.

TOMMY OPENS

The words "spring musical" don't do justice to the show that has been chosen as South Plainfield High School's 2000 annual production. The spectacular and sometimes controversial *The Who's Tommy* opens on the SPHS stage on Thursday, April 6. The music, a rock opera, was written by the British band *The Who* in the 60's. In the 70's the music turned into a movie.

Director Shayne Miller noted the students wanted to try this

show. He also said that baby-boomer parents could relate to the music. *Tommy* is a product of the often drug influenced 60's. Changes were made to ensure that the show was something the entire family can enjoy. Shayne explained, "We cut out all drugs and references to them in the show, as well as major pieces of vulgarity."

The complex social issues and the expansive time frame of the

Continued on page 12

Police Credited With Swift Arrest After Bomb Threat

By Patricia Abbott

The bomb threat discovered on High School Principal Anthony Massaro's answering machine at 6:15 a.m. on March 27 sent police and school personnel into a flurry of activity to secure the school before students arrived.

The threat stated that a bomb would be planted during the week and would go off sometime between Monday and Friday. School security was heightened, sweeps of the building and grounds were made and all evening events were either moved to another location or canceled. An additional search was conducted in the evening and police dogs were brought in to search the school.

On Monday morning police had a suspect and an arrest was

announced on Wednesday. The swift arrest of Gregory Yates, a resident of Fairmont Ave., was the result of a joint effort between school officials and the South Plainfield Police Department. Yates was charged with making terrorist threats and false public alarms. The 18-year-old was charged as an adult and arraigned this past Wednesday.

Detective James Foran noted that Yates was known for his ongoing behavioral problems at the high school. Yates signed himself out of SPHS approximately two weeks prior to the incident and briefly attended Vo-Tech in Piscataway. The threat is believed to have been a way to 'get even' with the school. Due to the content of the threat, it is believed to be more than a coincidence that Yates was to have

started at the adult school on March 27.

From the time the threat was discovered up until the arrest approximately 48 hours later, everyone involved remained calm and acted professionally. There was no panic from either the students or the residents. The police were commended by both high school principal Tony Massaro and Superintendent of Schools Guy Ferri in the way they reacted.

Superintendent of Schools Guy Ferri reiterated that the district has a zero tolerance stance and they intend to prosecute this suspect to the fullest extent of the law.

Because of increased security, rehearsals for the All District Music Festival were delayed. The festival was postponed until Friday, April 28.

Board of Ed Candidates Night Apr. 10

The district PTAs/PTSOs of South Plainfield will host the tenth annual Board of Education Candidates Night at John E. Riley School, 100 Morris Ave. The event will be held next Monday, April 10 from 7:30 to 9:30 p.m.

Moderator will be Judy Schachter, member of the New Jersey League of Women Voters, who has prior experience in this area.

The format will be two minute opening statements from each candidate. Responses will be limited to one minute, a rebuttal of one minute is allowed. The evening will conclude with a two minute closing statement.

Coffee and refreshments will be served.

Ponytail Softball Opening Day Set for Saturday

Recreation Softball season officially begins after the 11:30 a.m. opening day ceremonies this Saturday at Pitt Street Park. Everyone is invited to attend.

At last count 252 girls are registered to play this year, an increase of more than 32 girls from last year. 78 girls are on A League; 88 on B and 87 on C.



Pictured above is one of three recently purchased South Plainfield patrol cars. The reason for the revamped look is the additional expense of added striping has become an unnecessary financial burden. In the background is one of the borough's patrol cars presently in use.

Easter Sunrise Service In Spring Lake Park

The South Plainfield Ecumenical Clergy Fellowship invites one and all to celebrate Easter together at the annual community-wide Sunrise Easter Service beginning at 6:30 a.m. in Spring Lake Park.

Residents are invited to gather at the gazebo overlooking Spring Lake Park to pray and sing.

A highlight of the service will be the combined choirs from Sacred Heart Roman Catholic, Wesley Methodist, Saint Stephen's Lutheran, Rescue House of Prayer, First Baptist and Pilgrim

Covenant churches. Tom Baker, St. Stephens music director, will be the combined choir director this year. Reverend Dennis O'Neill, First Baptist Church, will be the preacher. Clergy from our other churches will also participate in worship leadership.

All are welcome to come and celebrate Easter 2000 at the park and then go and worship at local churches.

If it rains, the celebration will be held at 6:45 a.m. at Wesley Methodist Church, 1500 Plainfield Avenue.

School Board Approves Budget Public Vote Set for April 18

At a special meeting held by the Board of Education last week, the 2000/2001 budget was adopted. Residents will vote on the budget at the School Board Elections slated for Tuesday, April 18.

Attending the meeting were just seven people, three from the press and four school board candidates.

The budget totals over \$34 million, with \$26,999,001 to be generated by tax revenues. The local tax rate will remain level

with last year at \$2.03 per thousand. This is due, in part, to the increase in state-aid. Last year, South Plainfield received \$6 million in state-aid; this year the borough will receive an additional \$1.3 million, a 22-percent increase in funding, for a total of \$7,486,075 in state-aid.

Members of the Board of Education have been lobbying in Trenton during the past years trying to get increased aid for the South Plainfield district and their efforts have finally paid off.

Letters

In My Opinion

Dear Editor:

As a concerned senior citizen of South Plainfield, I would like to have a few questions answered. Did anyone do a traffic survey before approval was given to build all those apartments, condos, townhouses and single-family homes? You are going to have to build a school on Durham Ave., because you will never get the school buses to Roosevelt School. I travel that route every day on my way to work and there is no room for more traffic.

Was that little article about senior housing and the new senior center put in the newspaper just before the budget election for the sake of the senior citizens to perhaps influence their vote in favor of the budget? We seniors should be exempt from paying school taxes. We did our share. We built up this town and now the town doesn't want us.

Where is all the money from the federal government for the senior housing? What was it spent on? It should have a lot of interest accumulated by now.

What ever happened to the Helen St. project? Are you going to wait until a child is injured or killed before you get those trucks off the roads in town?

How many homes are really being built on New Durham Rd.? Are more being built than originally said? Is that why the builder will throw us a bone and build the senior citizen center?

When I see the senior center and senior housing buildings built is when I will believe it and not before. LET'S HAVE SOME ANSWERS, MR. GALLAGHER!

**NAME WITHHELD
UPON REQUEST**

Dear Editor,

In light of the elections for the Board of Education on April 18, did you know there are spouses of teachers running for office! Isn't that a conflict of interest? They should not

be allowed to run.

We will be going backwards instead of forward, we need new blood on the board with ideas of saving money and trying to educate the children. Spending \$25 million is not the answer.

TONY PISANIELLO

To the Editor,

For the last few weeks I have been reading letters in all the local papers saying how South Plainfield does not need a new school. Well my children go to Roosevelt School and let me tell you, we need a new school! Whether or not everyone keeps voting this down, it is going to happen. So either we vote YES and receive a cheaper interest rate on the loan or we vote "NO" and we don't receive the cheaper loan and are only able to create a short-term solution. But our taxes will still go up and a new school will have to be built anyway.

I don't agree with the board raising the total of the bond from the first referendum to the second one. I think that if the taxpayers of this town were given a choice to vote on just a new school, it just might pass.

I have lived in South Plainfield for most of my life and I see letters that are coming from people whose children went to school here also. One person even worked for the board of ed. So please let my children have a chance to go to a school that has a music room, an art room and a decent library.

For the people who think only single people will move into all those new apartments, give me a break! The class caps were not put into place to scare everyone. They are needed to give the children of Roosevelt School the same quality of education as the children in the town's other schools. As far as converting warehouses into schools—that is ridiculous. Would you allow your children or grandchildren to be taught in a warehouse? Will they be safe there? Also, where should the

children play during their lunch time?

Next time we are asked to vote on the bond issue, please do the right thing for the children of South Plainfield. Vote "YES" because, all the children will benefit from this, not just the children that go to Roosevelt School.

Vote "YES" because there will be too many children for our current schools to handle.

Vote "YES" because one way or the other, we will have to pay to educate all the children in this town. Doesn't it make sense to pay wisely with a plan for the future, instead of throwing our money away on "Band-aid" solutions?

**THANK YOU
THERESE MONTUORI**

To the Editor,

It's board of education election time again. In my opinion, an ideal BOE candidate would not only listen but would also hear and act on what the people are saying they want for their children and community. He would have the intelligence to make informed decisions, the strength to make tough decisions, but still have the ability to compromise when compromise is what is needed. This year, we have a candidate that meets those requirements. His name is Richard Gumina.

Rick is an excellent choice for the board of education and I'm happy he's decided to run for election. He is an open-minded person who is willing to consider all sides of a situation before making his own decision. That openness and approachability is an important trait for a board of education member. Rick also knows the art of compromise, which he has learned through his many years managing large complex projects. Knowing when and where to bend is a trait we need on our board.

I frankly can't think of a more ideal candidate for our BOE. We are facing issues today that our boards of the past did not have. These issues include some major purchases and expenses in both the areas of expansion and technology. Rick's background as an engineer in the aerospace and telecommunications fields make him right for our technology challenges. As a corporate program manager, he is also responsible for multi-million-dollar budgets and decisions. He not only recognizes what is important and necessary, but perhaps more importantly, he also recognizes and rejects waste when he sees it, too. As a taxpayer, I find that to be an important consideration.

If you want an informed, intelligent, open-minded person on our next board of education, join me in voting for Richard Gumina, Line 7, in our April 18 election.

**SINCERELY,
CAROLINE HARTY**

Submit Letters to the Editor:

South Plainfield Observer,
Editorial Dept.,
1110 Hamilton Blvd. Suite 1B
South Plainfield, NJ 07080

Letters may be submitted by email at our website at spobserver.com or faxed to 908-668-8819. We reserve the right to edit for clarity or length. We reserve the right to limit the number of letters submitted by one individual on the same subject we will publish.

Opinions expressed do not necessarily reflect the opinion of the Observer.

Letter to the Editor:

I am not a frequent writer of Letters to the Editor; in fact, I cannot recall ever having written such a letter.

However, I do need to break with my history to inform South Plainfield voters about one of this year's candidates for the board of education. I have a unique perspective and knowledge about this candidate—I am her son-in-law! I have, therefore, been able to interact with this candidate on a daily basis. Based on what I know, I am urging every eligible voter in South Plainfield to vote Line 5 for Loretta Cooper on April 18.

Some of the issues that are current can use the benefit of her talents. (1) She has successful experience within the area of school construction. You may remember she was part of the resolution which turned our "white elephant" of an open space high school into its current structure. She did that without the need for additional taxes nor the time, expense and controversy of a referendum. (2) Upon her election to the board of education the first time, she was able to reopen and maintain communications with all groups within the school community. She has never been—nor will she ever be—a pushover for anyone. (3) She is fiercely independent, and we can take advantage of her scrupulous experience to right what is wrong in South Plainfield.

Again, please recall that I am in a position to be most critical and informed about Loretta Cooper, because I do interact with her on a daily basis. However, I am also a taxpayer with a son in our school district. I am urging everyone to do what is best for South Plainfield by voting for Loretta Cooper, Line 5, on April 18.

THOMAS DOYON

Dear Editor:

As a June 1999 graduate of South Plainfield High School, I would like to lend my support to Frank Mikorski. Mr. Mikorski has shown interest in the education and opportunities that are available to South Plainfield students. Through his affiliation with area businesses, he helped me get a part-time job at a major area company. This job helped me fill my working requirement for the CIE program and led to a scholarship for college.

I thank Mr. Mikorski for caring about the students in South Plainfield and especially for his help with my employment. The Board of Education needs to continue to

have more people like Mr. Mikorski. Please vote Line 3 - Frank Mikorski - on April 18.

**SINCERELY,
BRAD CARLTON**

To the Editor,

Making a difference in people's lives is a very large responsibility. Being a member of the board of education gives you that opportunity. It is an honor and a privilege to serve in this capacity. Too often, this position is looked upon as a place to do favors for friends and relatives, procure contracts for acquaintances, or wield power over enemies. How you serve and what you accomplish tells much about your character.

Carol Byrne has always shown that she keeps to the high ground. She has put the students and the schools first on her list of importance. Because she doesn't back down from what is right, she has paid the price. Look at what she has done for our schools and our children.

It was her idea to start the eighth grade Washington trip. Although her daughters never got to go, she continued to push for it. She was on the organizing committee for the first Project Graduation and continued to work on it after her children graduated. Carol served as president or vice president on every PTA she belonged to, because she felt she could help those schools. She was a trustee for the Athletic Boosters, sold many a hot dog at the track meets and worked many a wrestling match. She was co-chair of the band camp chaperones, worked the paper drives, worked the band festival and helped in the fund-raisers.

As a board member she worked to bring quality teachers to South Plainfield, to put quality principals in all our schools, reorganized the central administration, put the lights on the football field, helped create and edited the *Community Contact* newsletter, created the three committees which researched our school situation, kept the tax rate down and worked very hard for the citizens of our town.

This is the kind of person I want to be one of my board members. Please vote for Carol Byrne, Line 1 on April 18. She will do a good job for you and for me.

FRANK FURINO

To The Editor:

As our board of education election approaches, the voters in South

Continued on page 9

South Plainfield Observer

The South Plainfield Observer is published every Friday

G&G Graphics, Inc.
1110 Hamilton Blvd. Suite 1B
South Plainfield, NJ 07080

(908) 668-0010 • FAX (908) 668-8819

Web page at <http://www.spobserver.com>

For subscriptions, advertising or information, call (908) 668-0010.

The publisher is not responsible for typographical errors.

NANCY GRENNIER
Publisher/Editor
WAYNE GRENNIER
Associate Publisher
SUSAN KANEPS
Art Director/Associate Editor
PATRICIA ABBOTT
Staff Writer
CAROL GRENNIER
Editorial Assistant
BRIAN COCHRANE
BOBBY HUNTER
Sports Writers
BRIGGS LONGBOTHUM
KENNETH MORGAN
Correspondents
ROXANNE CORTESE
WILLIAM TUTHILL
Advertising Sales

The South Plainfield Observer (U.S.P.S. 018253) is published weekly, except Thanksgiving week, by G&G Graphics Inc. 1110 Hamilton Blvd. Suite 1B, South Plainfield, NJ 07080-2004. Second class postage paid at South Plainfield, New Jersey 07080-9998. **POSTMASTER:** Forward change of address orders to G&G Graphics Inc. 1110 Hamilton Blvd. Suite 1B, South Plainfield, NJ 07080-2004. Subscription rates \$25 per year in South Plainfield; \$30 per year out of town. To subscribe: 908-668-0010.

SUBMIT YOUR ARTICLES

We look forward to hearing from all of you and encourage you to send in your stories and photos. The *South Plainfield Observer* is your paper. Please let us know what you would like to see in it.

To get an article published in South Plainfield Observer:

1. Type (double spaced) the article you wish published.
2. Mail, fax or drop it at: Editorial Department
South Plainfield Observer, 1110 Hamilton Blvd., Suite 1B, South Plainfield, NJ 07080 or drop it in the box at Mohn's Flowers on Plainfield Ave. or Twice Is Nice, Front St. or fax us at (908) 668-8819 or e-mail us on our web page at spobserver.com or ggnan@aol.com or nagrennie@ix.netcom.com. Include your name, address, telephone number.

The South Plainfield Health Department
Is Conducting Its Annual

RABIES CLINIC

At the
South Plainfield Borough Garage
(corner of Spicer and Belmont Ave.)
Dog and Cat Owners are urged to bring
their pets for inoculation.

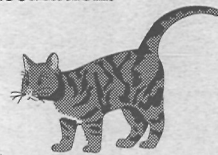
Dog & Cat Licenses Will Be Available
Please Note: Cats must be in a carrier

DATE:

Saturday, April 15, 2000
9:00 am-1:00 pm

For More Information Please Call

226-7631



From the South Plainfield Library

Bookmarks

By Kenneth Morgan

Thanks for stopping by, particularly since next week is National Library Week. Here's some news from the South Plainfield Library:

Next week, we'll have our usual Storytime programs. The children's programs on Tuesday, Wednesday and Thursday will be held at their usual, respective times of 10:30 a.m., 6:30 p.m. and 1:15 p.m. The programs are for children ages three and over. We've also got this month's Kidcraft program set for next Friday at 4 p.m. Space is limited for this program, you must pre-register. Check with Children's Librarian Linda Hansen for more information.

The next meeting of the Library Board of Trustees will be on Tuesday at 7:30 p.m. The public is welcome to attend what promises to be an informative meeting.

The new group from the Large Print Circuit is now available. Titles in this group include *Irresistible Forces* by Danielle Steel, *The Testament* by John Grisham, *Tis* by Frank McCourt and *Her Own Rules* by Barbara Taylor Bradford. However, we're now between groups on the book on Tape Circuit. The next group will be here later in the month.

The question has come up about whether or not we accept items from other libraries. By this, we mean returning a book from, say, Plainfield Library to us instead of Plainfield. The answer to that is, yes, we do. However, please be advised that it does generate some complications. The items are sent to their home library via courier, which can take at least a day or so. Furthermore, assuming when the item reaches said home library, you may end

up liable for a fine. So, while we will accept such returns, it's probably best for you to take them back yourself.

Lately, we've been getting requests for information for various school reports. One area of information requested is for periodical references. This presents a good opportunity to let you know just what we have in that area. Regarding newspapers, we normally keep only the present and previous month's issues. Exceptions to this include the *Courier-News* (available on microfilm), the *New York Times* (on microfilm and microfiche) and the local South Plainfield papers (including the *Observer*). As for magazines, the number of back issues we have depends on the magazine. Also, back issues of many, but not all of them, are available on microfilm and microfiche. In addition, our Internet terminals allow you to tie into EBSCO Host, a periodical reference database that covers many periodicals we don't stock. If you need help finding something in our periodical collection, please ask a Reference librarian. We'll do our best to track it down.

Finally, we have a request regarding the Friends of the Library Book Sale. We've gotten a lot of donations to the sale lately, causing an overstock problem. Please hold off on donations to the sale for a bit, so we can sell off some of the inventory and make room. Also, the big annual Friends' Book Sale is coming soon, so you might want to save up items for it. We'll be accepting donations for the big sale starting April 24.

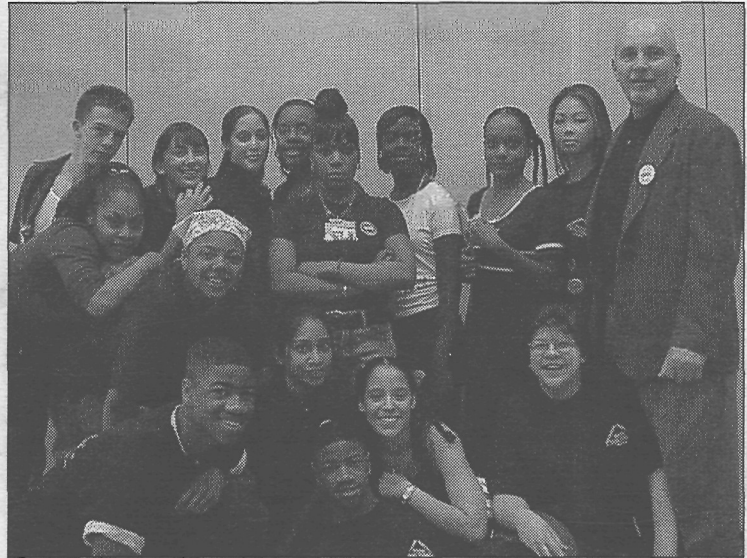
That'll just about do it for now. Please join us in celebrating National Library Week. We'll have more news for you next Friday.

R.A.R.E. Performs for Middle School

By Patricia Abbott

Members of the SPHS group R.A.R.E., Respect All Races Everywhere, and Advisor Tom Baker recently paid a visit to the Middle School. The group performed an original skit celebrating Black History Month. The skit was written by members Christine Martinez and Allisa Gittens. The main character, "Grandmother Taylor," told stories to her "children," "grandchildren" and "friends" about the famous people in her younger days. The students who played youngsters had toys with them and were dressed like children. "Grandmother Taylor" explained that the famous people she spoke of were not rich movie stars but rather people who "...had made a change within his or her community and maybe even the world."

The children, both the sixth grade students and the performers, listened as "grandmother" spoke of actress Ethel Waters, musician Duke Ellington and Althea Gibson, the first African-American to win major titles in tennis, as well as others. They



concluded the show with a rather well-known phrase in South Plainfield High School, "It's nice to be important but it's important to be nice."

Following the skit the RARE students questioned the six graders on various famous African-Americans. Those with a correct answer were given a RARE button. Questions were fired at the group and hands went up over and over again supplying correct answers. As the middle school

students filed out of the room at the end of the assembly each were presented with a RARE button.

President of RARE is Diana Algo. Also participating in the show were, Christine Martinez, Veronica Morilla, Amanda George, Stephanie Veerasammy, Sean Grevious, Chris Grevious, Tamika Limerick, Sally Serago, Ashley Allocco, Mary Nguyen, Ebony Rowe, Tawana Nichols, Thomas Doyan, Shante Edelen and Allisa Gittens.

Holly Park Mower Celebrates First Anniversary at Open House

Holly Park Mower Shop, owned by Brad and Kimberly Batcha, will celebrate their first anniversary with an open house on Saturday, April 8 from 11 a.m. to 4 p.m. The shop is located at 2720 Park Ave., next to Von Grafts Florist.

The event includes free hot dogs and soda, along with raffles, a 50/50, face painting, animal balloons and a visit by Five Pockets the clown, who will be on hand from 1-4 p.m. Everyone is invited to visit and see all the improvements that have been made at the shop and make sure to bring the kids.

Brad and Kimberly bought the business in April, 1999 and have been busy with preparations for this grand opening ever since. The shop has been completely refurbished. They have signed on with several residential and commercial equipment manufacturers.

Kimberly said, "We bought the shop because it has always been a dream of ours to run our own business. Brad has over 15 years in mechanical and landscape

equipment experience. It seemed like a perfect business opportunity. We are both hard workers and are very conscientious about the quality of service we give to our customers. It's a small family-owned shop and we try to give all our customers personal care and attention."

Kimberly noted that they have big plans for the future of the shop. They are exploring new lines of equipment and different fields of service and sales. Stop by the open house on Saturday, April 8 and see what has been accomplished!

Vision 2001 Selling Annual 50/50 Tickets

Raffle tickets benefiting Vision 2001 are now on sale. Last year's winner received \$3,700. The winner will be announced at the Art Auction held Friday, April 14 at the high school. The 50/50 is an important fundraising activity each year. For information on tickets, call 756-8038.



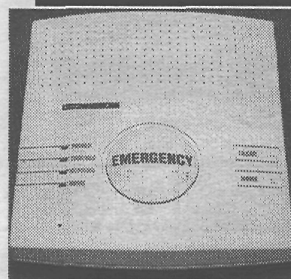
Photo by Bill Seesselberg

Area Scouts Visit U.S.S. Intrepid

Scouts from Packs 224, 207, 324, 205 and 202 stand tall on the deck of the U.S.S. Intrepid during their April 1 visit. The scouts and their families toured the Sea-Air-Space Museum and saw a wide variety of airplanes, toured the aircraft carrier and other ships, and learned about the Intrepid's role in America's war history and space exploration. Some of the group also rode in a flight simulator that gave them the feel of a Gulf War mission. This fun excursion involved all of the borough's packs. This trip was planned and organized by Liz Nolty of Pack 224. Those who went on the trip wish to thank her and all who helped on the trip.

PERS-2400

24-hour Personal emergency reporting system



Press the button and a trained operator will speak to you through the console and summon medical aid.

- Great for the disabled, elderly or injured
- Victims of domestic violence can obtain help with the press of a button

\$35 per month
NO OTHER FEES

For a little more than a dollar a day and we supply the system for free*

Security Concepts
OF MIDDLESEX COUNTY

908-757-7344

Locally Owned & Operated

*3-Month minimum commitment required

Computer Services

for individuals and businesses

We will provide quality service for all of your hardware, software, and networking needs at a low cost

TeknoWizards, Inc.



South Plainfield, NJ 07080 Tel 908.769.6843
Fax 908.769.6414 Visit us at www.teknowizards.com

events

Around Town

YMCA Kid's Place Plans Open House

The YMCA Kid's Place will hold an open house on Saturday, Apr. 8, from 9 a.m. to 1 p.m.

The child care center, located at 3145 Park Ave., offers full-day kindergarten learning experiences for children ages three months through kindergarten with options for part-time and full-day care two to five days a week, from 6:30 a.m. to 6 p.m. Before and After School programs are also available.

For further information, call (908) 822-9076.

Singles Professionals Networking Party

"Single Professionals' After Work Networking Party" will be held on Friday, April 7, 6:30 to 10 p.m. at The Inn at Mount Bethel, 161 Mount Bethel Rd. in Warren. The cost is \$10 at the door and includes refreshments. Contact KISMET at (908) 232-8827 or visit www.thatskismet.com.

Multi-Cultural Modern Dance Concert

The Acrodance Theatre Company will present "One World Through Dance," a multi-cultural modern dance concert featuring excerpts from "Gospel Gala" and newly choreographed Irish Suite, and several Hispanic pieces on Sunday, April 30, at 7 p.m. at Middlesex County College, Performing Arts Center, 2600 Woodbridge Ave. in Edison. General admission is \$5 or free with a MCC Student ID.

For tickets call 732-548-6000, ext. 528. For information evenings and weekends call (732) 563-4117.

Historical Society Holds Monthly Mtg.

The South Plainfield Historical Society will hold a meeting on Tuesday, April 11 at 7:30 p.m. at SPHS library. The public is invited to attend.

Rescue Squad Auxiliary Holding Open Houses

The Rescue Squad Ladies Auxiliary is seeking individuals who may be interested in joining their organization. There will be open houses on April 19 and May 17 at the Rescue Squad building on Plainfield Ave., starting at 8 p.m.

Meet current members, see how the meetings are conducted and learn what the auxiliary is all about. Interested parties can come out and get answers to questions you may have about the organization, while enjoying some cake and coffee.

Lenten Fish Dinners At Sacred Heart

The Society of Saint Vincent de Paul of the Sacred Heart Church will sponsor Lenten Fish Dinners on April 7 and 14.

Dinners will be served in the Sacred Heart School cafeteria located on South Plainfield Ave. from 5 p.m. to 7 p.m.

The menu will feature filet of fish (fried, broiled or parmigiana) or pizza; fresh garden salad, french fries or macaroni and cheese, cole slaw, coffee, tea, or cold drink, plus dessert. Take out orders are available.

Admission is \$8 for adults, \$7 for seniors and \$4 for children. Pay at the door. For information, call the Parish Center at 908-756-0633. Stations of the Cross will be held in the Church at 7 p.m.

Easter Bunny is Coming to the PAL!

South Plainfield Recreation Department is happy to announce the annual Easter Egg Hunt will take place on Saturday, April 8 at 1 p.m.

All South Plainfield children ages new born to nine years old should meet behind the PAL building. Harvey the Bunny will be present.

Breakfast With the Bunny at Kennedy

The John F. Kennedy School Stokes Committee is sponsoring a breakfast with the Bunny on Saturday, April 8 from 9 to 11 a.m. Admission is \$4.

Enjoy a continental breakfast, take chances on many raffle prizes and have your picture taken with the bunny for \$3. Come and enjoy yourself!

Columbiettes Sponsoring Easter Bunny Lunch

The South Plainfield Columbiettes are sponsoring a lunch with the Easter Bunny on Sunday, April 9. The Easter Bunny will visit the Knights of Columbus Hall on Hamilton Blvd. Doors will open at 12:30 p.m. Following lunch the bunny will distribute Easter baskets filled with goodies to all children seven and under. There will also be gifts for all ages and door prizes for each age group.

Tickets are \$7 for children seven and under and \$6 for all others. For info call Mary Ann at (908) 226-1222.

Country Breakfast At Polish Home

The Polish National Home located on New Market Ave. will

Say Goodbye And Thank You To Jim Eckert

A farewell party to say thank you and goodbye to Jim Eckert, retiring borough clerk, is planned for Thursday, April 20 at Flanagan's from 5 to 7:30 p.m. The cost is \$20 per person and includes a buffet dinner and soda. Call the PAL at 226-7713.

be serving a Country Buffet Breakfast on Sunday, April 9, from 8:30 a.m. to 12:30 p.m.

Eggs, bacon, sausage and other breakfast items will be served. Prices are \$6 for adults, \$5 for seniors, \$3 for kids 6-12, children under five are free.

A portion of the proceeds will go to SP Volunteer Fire Dept. and DARE. Please call (908) 668-9442 for questions.

Tourette Syndrome Support Meeting

The Tourette Syndrome Association Family Support Group of Middlesex County will meet on May 9. For more information, contact Debbie at 732-283-1439 or www.tsanj.org.

Charity Basketball Game at Franklin

The Franklin fifth grade parents will face off against the DARE officers and their friends in a fundraising basketball game on April 13, at 7 p.m. The event will be held in the SPHS gym.

Proceeds benefit the Fifth Grade Stokes Trip. There will be plenty of food and drinks on hand, along with raffle prizes. Prizes include tickets to the Nets, an AT&T cellular phone, auto-

graphed pictures of Jennifer Love Hewitt and Christina Applegate, sports equipment package and much more.

Senior Trip to See The Student Prince

Senior are planing to go to the Papermill Playhouse to see *The Student Prince* on Thursday, May 25. The bus leaves from the PAL building on Maple Ave. at 11:30 a.m. Tickets are \$35 per person. Purchase tickets at the PAL.

Rec Department Sponsors Yankee Trip

The South Plainfield Recreation Department is sponsoring a trip to Yankee Stadium to see the N.Y. Yankees vs. Boston Red Sox on Tuesday, June 13, 2000. Bus leaves the PAL lot at 4 p.m.

Ticket price is \$37 per person. PAL phone number is 226-7713.

Vision 2001 Art Auction Next Week

The South Plainfield Vision 2001 Education Foundation will be holding their Annual Art Auction on Friday, Apr. 14 at South Plainfield High School. Previews start at 6 p.m. and the auction will begin at 7 p.m.

Donation is \$5 per person. There will be door prizes and hors d'oeuvres, cake and coffee. Major credit cards are accepted. The auction features framed art in all media and price ranges. Major credit cards accepted. For tickets or info, call (908) 756-8038.

Flea Market/Fair Vendors Sought

South Plainfield Girl Scouts of Washington Rock Girl Scout Council are seeking vendors for their Family Fair and Flea Market planned for Apr. 29 (rain date, May 6) at the Middle School.

Registration fee is \$15 for a 15x5 foot area. Each additional space is \$10. You must supply your own table. Set up is from 7:30 to 9 a.m. and clean up is 4-5 p.m. Sorry no food vendors.

For further information, call Cindy Bosse at (908) 756-9257.

Seniors - Come Dance With the Pros

Are you starting to feel your arteries clog up? Your waist becoming a past memory?

It's time for a change. Seniors, are invited to come and dance with the pros every Wednesday, 1:15 to 2:15 p.m. Fee is \$15 per person. Register at the PAL, or call 226-7713 for information.

Submit your events for

AROUND TOWN

Mail or drop off your stories and photos: The South Plainfield OBSERVER, 1110 Hamilton Blvd., South Plainfield, NJ 07080. Fax (908) 668-8819; email GGNAN@aol.com.

HOLLY PARK MOWER SHOP



OPENHOUSE

BRING THE WHOLE FAMILY FOR A FUN DAY!!

- Five Pockets the Clown will be appearing from 1-4 p.m.
- Face Painting • Magic Show • Animal Balloons

Come See What We've Done to the Place!

Free Hot Dogs & Soda, Raffles & 50/50

Specializing in Small Engine Repair
Commercial & Residential Welcome

HONEST & DEPENDABLE SERVICE

- Pick Up & Delivery -

- Lawn Mowers
- Weed Wackers
- New & Used Parts
- Snow Blowers
- Chain Saws
- Generators & Pumps
- Tractors
- Blowers

AUTHORIZED DEALER FOR: Lawn-Boy • Homelite

Snapper Commercial • Little Wonder • Green Machine (by John Deere) • Briggs & Stratton • Tecumseh • Kohler • Kawasaki

Saturday, April 8, 2000 • 11 AM to 4 PM

**Under
New
Ownership**

Hours: Tues., Thur., Fri. 8:30 a.m.-5 p.m.
Mon. & Wed. 8:30 a.m.-8 p.m.
Saturdays 8:30 a.m.-5 p.m.

908-754-3457

2720 PARK AVE. • SOUTH PLAINFIELD

LAST CHANCE

Offer expires April 30, 2000.

FREE!

DISH 500 DIGITAL SATELLITE TV SYSTEM AND FREE BASIC PROFESSIONAL INSTALLATION

HERE'S HOW IT WORKS:

- 1 Choose a deluxe, multi-room-ready DISH 500 satellite TV system, Model 3722/3822 (MSRP \$1999).
- 2 Provide your participating retailer with a valid credit card, an original cable bill and agree to purchase one year of America's Top 100 CD, plus one Premium Movie package (or equivalent programming) totaling \$39.98 per month.
- 3 Get a FREE DISH 500 Model 3722/3822 satellite TV system and FREE basic Professional Installation!
- 4 Call DISH Network to activate programming.

Some restrictions apply. See participating retailer for details.

DON'T HAVE CABLE?

If you do not have a cable bill, you can receive a FREE DISH 500 system after a \$199 automatic rebate and a FREE basic Professional Installation.

AMERICA'S TOP 100 CD (AT LEFT)

Disney Channel (East & West) • ESPN • ESPN2 • ESPN News • ESPN Classic • E! • TNT • TV Land • Comedy Central • Nickelodeon • Nick at Nite • East & West • HBO • MTV • Fox Family Channel • Fox Channel 52 • CNN • Headline News • CNN2 • ESPN2 • Discovery Channel • Discovery Network • The E! Channel • The E! Channel • CW • Country Music Television • Lifetime • America's Voice • VH1 • Home Shopping Network • EWTN • Cartoon Network • BBC America • The History Channel • The Weather Channel • Home & Garden TV • Food Network • Travel Channel • The Nashville Network • TBN • Angel One • Animal Planet • Game Show Network • American Movie Classics • BET • Independent Film Channel • Romance Classics • Toon Disney • Bravo • Discovery People • MSNBC • WGN • Turner Classic Movies • TV Games Network • CNN • CNN2 • M2 • FX • Univision • Galavisión • ZDTV • FOX News Channel • PAX TV • Noggin • NASA • Your Regional Sports Network • DISH CD with over 30 channels of commercial-free, CD-quality music!

CHOOSE ONE PREMIUM MOVIE PACKAGE

<h4 style="text-align: center; font-size: small;">SHOWTIME UNLIMITED PACKAGE</h4> <div style="display: flex; justify-content: space-around;"> <div style="text-align: center;"> <small>(4 channels)</small> </div> <div style="text-align: center;"> <small>(2 channels)</small> </div> </div> <div style="display: flex; justify-content: space-around;"> <div style="text-align: center;"> <small>(2 channels)</small> </div> <div style="text-align: center;"> <small>(2 channels)</small> </div> </div>	<h4 style="text-align: center; font-size: small;">HBO THE WORKS PACKAGE</h4> <div style="display: flex; justify-content: space-around;"> <div style="text-align: center;"> <small>(2 channels)</small> </div> <div style="text-align: center;"> <small>(2 channels)</small> </div> <div style="text-align: center;"> <small>(2 channels)</small> </div> <div style="text-align: center;"> <small>(2 channels)</small> </div> </div>
<h4 style="text-align: center; font-size: small;">STARZ ENCORE SUPER PAK</h4> <div style="display: flex; justify-content: space-around;"> <div style="text-align: center;"> <small>(2 channels)</small> </div> <div style="text-align: center;"> <small>(2 channels)</small> </div> <div style="text-align: center;"> <small>(2 channels)</small> </div> <div style="text-align: center;"> <small>(2 channels)</small> </div> </div>	

\$39.98

per month

GET YOUR LOCAL CHANNELS NOW ON DISH NETWORK!

DISH Network local channels available in more cities than any other satellite TV provider!
Local Networks available by subscription in selected areas.

Complete Satellite Systems by... Audio-Tel Electronics

Sales-Service-Installations
Call (908) 412-8346
1107 Hamilton Blvd., So. Plainfield, NJ

DISH Network: #1 in Customer Satisfaction Among Satellite/Cable TV Subscribers

How would you like your TV?

www.dishnetwork.com

J.D. Power and Associates 1999 Cable/Satellite TV Customer Satisfaction Study. Study based on a total of 10,266 responses from satellite/cable TV subscribers. www.jppower.com

Offer ends 4/30/00. All prices, packages and programming subject to change without notice. Local and state sales taxes may apply. Programming is available for single-family dwellings located in the continental United States. All DISH Network programming, and any other services that are provided, are subject to the terms and conditions of the Residential Customer Agreement, which is available upon request. Local TV channels are offered only in specified areas and may be provided through an outdoor antenna or a local dish antenna. On-air broadcast picture quality may vary based upon location. Local Broadcast Networks by satellite are only available to customers who reside in the specified local Designated Market Area (DMA). Distinct Broadcast Networks packages by satellite are only available for private home viewing and in limited areas. In homes that are located outside a Grade A or B designated area, Customers who do not subscribe to DISH PAK, DISH Lane, America's Top 40 or America's Top 100 CD programming will be charged a \$5.00 per month Service Access Fee. Prices do not include shipping and handling. Additional receivers must be activated in conjunction with a primary receiver, and are subject to a \$4.99 per month programming fee per receiver. All receivers must be connected to a phone line. ESPN and ESPN2 programming subject to change and blackout restrictions, and is licensed separately for residential and commercial use. FOX Sports Networks programming subject to blackout restrictions and licensed for residential use only. Regional sports networks not available in all areas. Free satellite TV system subject to change based on availability. Free 3722 or 3822 satellite TV system or free 3722 or 3822 satellite TV system \$199 rebate for systems purchased and activated between 1/30/00 and 4/30/00. Rebate (if applicable) will be mailed 6-8 weeks after customer pays first bill (for 2 months of programming). A valid credit card must be presented, and customers commit to 12 consecutive months of America's Top 100 CD, plus any one Premium Movie package or other programming that totals \$39.98 a month. This offer not valid with any other offers. Offer limited to new customers subscribing to qualifying programming. Cancellation fees apply for early termination of services contract. See DISH Network Offer Terms and Restrictions for details. Prices for qualifying programming do not include state and local taxes. MSRP basic Professional Installation \$199. Only one basic Professional Installation per system installed and programming activated between 1/30/00 and 4/30/00. Free basic Professional Installation only available through participating retailers. Basic Professional Installation includes installation of one 20" dish antenna, hook-up of one receiver to one TV and equipment testing. Other installation restrictions apply. All service marks and trademarks belong to their respective owners.

Sports

HIGH SCHOOL By Brian Cochrane

Alison Barrett Propels Tiger Softball Team in Opener

The South Plainfield Tiger Softball Team opened their 2000 season in grand fashion as senior Alison Barrett thoroughly shut down Metuchen, enroute to an 11-0 victory. Alison, who carded 13 shutouts last year, picked up where she left off by striking out seven of the fifteen outs the Tigers needed for the mercy shortened win.

The pitching momentum followed her to the batters box as well, as Barrett also chimed in

with three hits while scoring four runs. The pounding didn't stop there as teammates Kerri Howells and Laura Walters got two hits and two RBI apiece, while freshman center fielder Christine Stranni knocked in three runs of her own. Kim Wilcox added three hits and two RBIs in a rare double-digit barrage, that the Tigers saw very few times last year.

The girl's next home game is Saturday, April 8 at 2:00 vs. Watchung.

Tiger Boys Baffled in Opener

The South Plainfield Boys Baseball team was not having as much fun as the ladies team last Saturday when visiting Perth Amboy came armed and ready in the form of senior southpaw Alex Perez.

Each Tiger who came to the plate seemed overmatched by the

lanky Latino, generating zero offense and being no-hit in the 11-0 loss.

The Tigers try again this weekend with a home game against Sayerville on Friday and then head to North Plainfield for their annual tournament.

Fourteen Tiger Wrestlers Win Medals at State Tournament

By Bob Hunter

South Plainfield Middle School and Recreation Wrestlers combined to win 14 individual medals at the New Jersey Kids State Wrestling Tournament. South Plainfield sent 21 wrestlers to compete. Winning medals for the Tigers in the Bantam division were Nick Heilmann (55) 7th/8th and Mike Wagner (75) fifth place.

In the Midget division, placing were Robert Gentile (55) 7th/8th, Billy Ashnault (70) fifth place, Mark Wagner (85) second place and Rocco Petriello (Hwt) 7th/8th. In the Junior division, Jimmy

Conroy (65) fourth place, Kevin Crilley (119) sixth place and Peter DeAndrea (105) 7th/8th.

In the Intermediate division Danny DeAndrea (95) 7th/8th, Kyle Bostick (112) 7th/8th, Guy Severini (135) third place, Joe DeBaise (150) third place and Ryan Elliott (Hwt) second place.

Also winning matches, but not placing, were Patrick Hunter, Nick Valone, Ryan Sacco, John Wylam, Elizabeth Martin, Nick Dorey, Brad Martin and Rob Mastickle. Congratulations to all the place winners and to all the wrestlers for a great year.

South Plainfield Fire Soccer Team Results

The South Plainfield Fire Soccer team played it's second game of the year against a tough Plainfield Mustangs team. The Fire blazed to an early 1-0 lead. Jonathan Llerena took a beautiful cross-sides pass from Matt Cesare and fired the ball into the far-corner of the goal.

The Mustangs tied the game in the second half. The Fire scored an apparent go-ahead goal towards the end of the game on a penalty kick by Jonathan Llerena. The goal was nullified by an infraction and the game ended in a 1-1 tie.

The entire team exemplified great teamwork and soccer skills. Mike Wagner, in his first year of soccer, played an excellent game for the Fire!

Submitted by: Ken Martin

Megan Sattler Wins at Gymnastics Championships

Megan Sattler, the New Jersey Level 9 Senior B State Champion, placed fourth overall at the Level 9 Senior B Region VII Championships, held at Parkettes National Gymnastics Training Center in Allenton, Pa. on Sunday, April 20. Megan placed first on bars with a score of 9.35 and first on vault with a score of 9.3. Her overall score of 36.375 and fourth place overall qualifies her to compete in the Junior Olympic East National Gymnastics Championships to be held in Cleveland, Ohio on Sunday, April 30.

Megan is a member of the Bridgettes National Gymnastic Team of Feigley's School of Gymnastics in South Plainfield and is coached by Trish Sutphen, Matt Deibert and Jill Cookingham.

Rec Department Sponsors Yankee Trip

The South Plainfield Recreation Department is sponsoring a trip to Yankee Stadium to see the N.Y. Yankees vs. Boston Red Sox on Tuesday, June 13, 2000. Bus leaves the PAL lot at 4 p.m.

Ticket price is \$37 per person. PAL phone number is 226-7713.

Specialty Gift Baskets

Gourmet coffee, tea, popcorn, crackers and cheeses.

Mohn's
Flowers & Fancy Foods

2325 Plainfield Ave.
So. Plainfield, NJ (908) 561-2808
Corporate Accountants Welcome.
Major Credit Cards.

By Frank Hanley

juniorbaseballclubnotes

Booster Weekend—

The club's Annual Booster weekend is under way. Players are out this weekend at local businesses collecting donations for the club. This is a major fund raising event for the club. Monies raised this weekend go right back into facilities and equipment for the children. The club thanks everyone for their generosity and the local business owners for their support.



OPENING DAY 2000—Opening Day is next Saturday, April 15. As in the past, the club will start off the 2000 season with a parade through town and a ceremony at the complex. The parade will start at 10 a.m. with a march from Boro Hall to the baseball complex. A brief ceremony will be held at the complex. Games will start at noon and continue throughout the day.

SPJBC Scholarship—All applications have been received. The Scholarship Committee will be meeting next week to begin review of the applications.

Snack Stand Captains—The club is looking for a few additional snack stand captains. There are several shifts that still require a captain. The captains are responsible for the operation of the stand. Contact Tom Curtis or Bob Golon at the clubhouse for more details.

Around the Complex...The work continues to get the complex ready for the 2000 playing season. A general work detail is scheduled for this Saturday, April 8 starting at 8 a.m. Anyone who can spare some time is asked to help out.

Somerset Patriots—Over 100 tickets have already been sold for this year's outing to see the Somerset Patriots. The club has reserved 300 tickets for the game scheduled on Friday night, May 26. The tickets are \$8 each and are being sold on a first come-first serve basis. Contact John Rayho at 754-8904 for more information.

Woman's Auxiliary—The Woman's Auxiliary is sponsoring the annual Little Miss Baseball contest. The 2000 Little Miss Baseball will be announced on Opening Day. Contact Cindy Eichler at 769-4047 for more information. The Woman's Auxiliary will be on hand Opening Day taking orders for SPJBC clothing and logoed items.

Sign Sponsors—The Sign Sponsor program is again being offered to local businesses. This program provides businesses with advertising space at the complex. Businesses interested in becoming or continuing as a sponsor or should contact the club as soon as possible.

Registration—Anyone still interested in playing should contact the club ASAP, as there are only a few openings remaining.

Contact the SPJBC—clubhouse phone: (908) 754-2090...email: spjbc@aol.com ...Web Site: members.aol.com/spjbc/spjbc.html

Events at a Glance

Work Detail - Saturday, April 8 at 8 a.m. at the complex

Booster Weekend - April 6, 7 and 8

Opening Day - Saturday, April 15

Aiello

Chiropractic Center, P.C.

Your hometown source for quick pain relief

2201 South Clinton Avenue, Suite H
South Plainfield, NJ 07080-1471

On the corner of New Market and South Clinton

755-2289

Franklin School Custom Cape



Beautifully maintained home boasting 2½-yr-old roof, aluminum siding, deck, expanded kitchen, den, plus finished basement, rec room, 3/4 bdrms. Call today!

Ask to speak to South Plainfield Specialists...

Weichert Realtors

Bob Kupcho
Eve: 908-753-9799

Maryhelen & Paul Thievon
Eve: 908-756-9197

We Sell More
Because We Do More

Warren Office 908-757-7780



Twin City Pharmacy

755-7696

1708 Park Ave., South Plainfield (Next to ACME)

COMPLETE
LINE OF

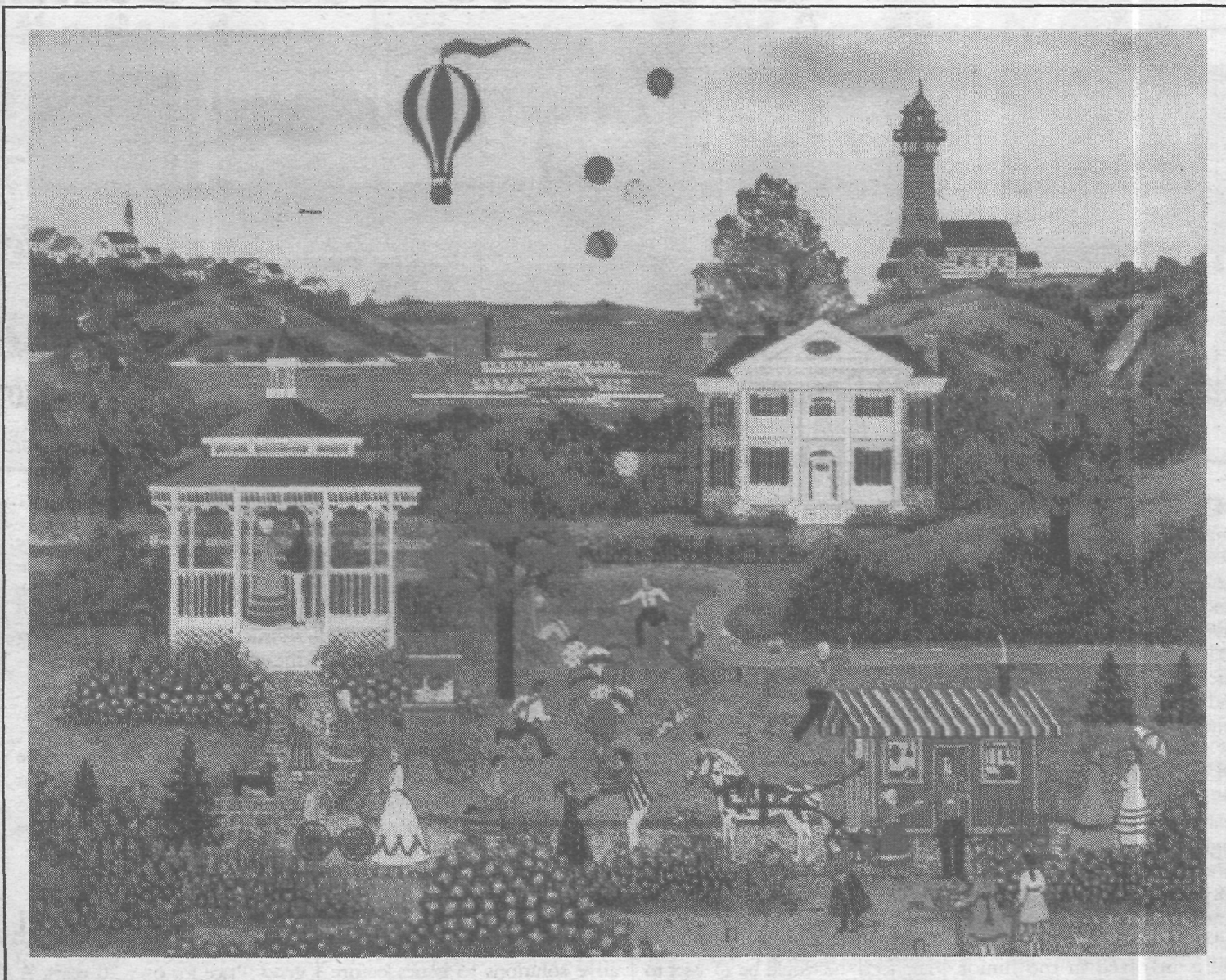
VITAMINS &
MINERAL SUPPLEMENTS
Featuring Solgar and Hudson

Today's modern pharmacy with old fashioned values

- Free Delivery
- We Accept Most Major Medical Plans
- Hospice Care & Home Healthcare Needs
- Diabetic Counseling & Supplies
- Direct medicare billing for medical goods and equipment.
- Hallmark Cards and Gifts

Avoid the Flu -
Take your
vitamins!

Come and See for Yourself!



5th Annual Art Auction

*proudly
sponsored by*

SOUTH PLAINFIELD VISION 2001 EDUCATION FOUNDATION, INC.

Friday Evening, April 14, 2000

7 pm (Preview at 6 pm)

Honorary Chairperson, Georgeann DiGrazia

**South Plainfield High School Cafeteria
200 Lake Street, South Plainfield, NJ**

Donation: \$5 per person • Door Prize • 50/50 Raffle • Major Credit Cards Accepted

Refreshments, Music

*Featuring art in all media
and price ranges:*

Alaniz • Tarkay • Neiman
• Delacroix • Rockwell
• Fazzino • Boulanger
• Wooster Scott • Gorman
• McKnight & many others

Questions? Please call (908) 756-8038 or visit our website at www.spvision2001.org

Vision 2001 Education Foundation thanks the following businesses for their sponsorship

John Cecchettini Insurance Agency 1510 Park Ave. 908-757-8343 • **dmc²** 3900 South Clinton Ave. (P) 908-561-1100
(F) 908-668-7896 • **Patrick J. Diegnan, Jr. Attorney at Law** 2443 Plainfield Ave. 908-753-7200 • **South Plainfield Observer**
908-668-0010 • **Valley National Bank** Durham Ave. & Hamilton Blvd. 908-757-5868 • **Pinto Brothers Recycling Co.** P.O. Box 263
South Plainfield (908) 561-8236 • **Leporino Ins. Ltd. Life, Health, Disability** 33 South Plainfield Ave. South Plainfield 908-756-8038 •
Ware Industries 400 Metuchen Road South Plainfield (908) 757-9000 • **Power Solutions Electrical Contractors** 230B St.
Nicholas Ave. South Plainfield 908-668-4344 • **Ricochet Health & Racquet Club** 219 St. Nicholas Ave. South Plainfield 908-753-2300
• **M.H.A. Travel** *Special Cruise to Canada On The Big Red Boat* August 8th to 12th, *Mets vs. Pirates* June 6th to 24th—Call 908-226-1222
• **J.T. Penyak Roofing** 124 Camden Ave. South Plainfield 908-753-4222 • **Mohns Flowers and Fancy Foods** 2325 Plainfield
Ave. South Plainfield 908-561-2808 • **Nischwitz & Company** 223 Front Street, South Plainfield 908-756-0947

Meet the 2000 School Board Candidates



Carol M. Byrne



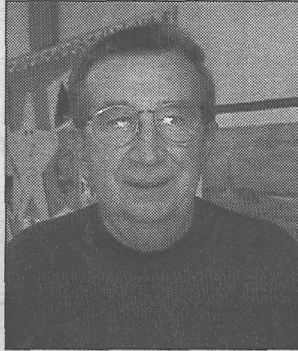
Loretta Cooper



Thomas E. Delaney



Rick Gumina



Frank A. Mikorski



Susan Peck

Not pictured: Robert C. Podlovits

Carol Byrne moved to South Plainfield in 1969, left in 1972 and returned in 1975.

A homemaker, Carol and husband Gerard have two daughters, Kristin, 30, graduate of Douglass College and Meridith, 28, a graduate of the University of Maryland. Both girls are graduates of South Plainfield High School.

Carol served on the BOE 1978-1987, six years as vice president; 1995-1998, two years as president. She also served on the Borough Public Celebrations and Land Management committees.

Byrne was active in PTAs at Grant School, Franklin School, and the middle and high schools. She is involved in the Junior Woman's Club, Elks Auxiliary, Music Boosters, Band Camp and Athletic Boosters.

"I feel that, at this time, experience in leadership and knowledge of the district is absolutely needed. Our schools are at an important point in history and must be guided in the right direction," Carol explains.

"We have an experienced, dedicated staff who can meet the challenge of the future. With the constant infusion of younger staff and the continuing upgrading of skills in our teaching population we can climb even further up the ladder. Keeping a tight leash on expenditures while providing a complete and in depth education for our students is a continuing goal for the Board of Education. Salaries and benefits commensurate with the rest of the state's population and good working conditions for staff are important, she adds.

Carol feels she can better serve the community by bringing the experience she has attained over the years serving as a board member, thus providing a steadying influence.

Loretta Cooper has lived in South Plainfield for 48 years. She is a widow and has four grown children, Frank, Pamela, Sandra and Jacquelyn.

Although Loretta is retired, she does volunteer work at the high school, serving as an unpaid hall monitor.

Loretta served two terms on the Board of Education from 1983 to 1989, was Grant School PTA president, a Pop Warner cheer-leading coach and advisor for 35 years. She also belongs to the SPSHS Athletic Booster Club and SPSHS Music Booster Club.

She says she is running because of her knowledge and experience and feels she would be an asset to the board. She also wants to be a part of the decision making body that effects our children and school district.

"I am a free thinking, open minded person, willing to work together with the board and the public to solve problems. I feel I can better serve the community by listening to the public and being a voice of the people," she explains.

Loretta adds that with the projected added enrollment and the referendum being defeated twice, we need to reconsider all options available to us. She would like there to be more of an open dialogue between the board and the public.

Thomas Delaney resides on Chambers St. and has lived in South Plainfield for 44 years.

He and his wife, Ann, have three children, Siobhan, 13, Christopher, 10 and Conal, 3.

Employed for 12 years as a plant manager at Advanced Process Tech., he has been with the company for 27 years.

He has served as vice chairman and chairperson of the Land Management Advisory Committee, on the Riley School PTSO, as school board co-liaison for Riley School and on the Roosevelt School PTA.

Delaney explained he reasons for running, "I am a lifelong resident and I would like to give something back to the community. I would like to see that our schools continue to provide our children with a quality education."

"I will listen to the voters concerns and act on their behalf," he adds.

He says he can better serve the community by finding creative solutions to issues before the board.

Rick Gumina has lived in South Plainfield for 20 years and resides on Van Fleet Ave. with his wife, Margie, and two children, Ricky 17, and Kristi, 15.

He is employed as a program director at Telcordia Technologies in Piscataway.

Gumina has served as a member of the PTSO/PTA of Riley School, Middle School and High School; a Vision 2001 sponsor; a South Plainfield Recreation coach; a member of Sacred Heart Church; IEEE and NJIT Alumni Association.

When asked why he is running, Rick answered, "I feel I have the skills, background and initiative to help our district successfully meet the challenges and decisions it now faces." He added, "I will work to foster and support staff, parent, student and community team building. I believe in listening to and respecting the opinions of others."

He says his skills in management will help to guide our expansion and maintenance planning. "My technology experience will be beneficial to helping guide the district's technol-

ogy program," he explains.

He recommends are that we need to act aggressively and intelligently to the voice of the people of this community and restructure our plans to meeting the overcrowding and maintenance needs.

Rick also says that listening, respecting the opinion of others, the ability to compromise to move forward, and acting on good ideas are all attributes he possesses and will practice as a member of our Board of Education.

Frank A. Mikorski

and his wife have resided on Regency Place for over 20 years. A member of the school board for two terms, Frank is seeking reelection. He retired in 1987 as director of human resources from ABB Lummus Inc. (an international company with Process Design Engineering Industry.) Frank graduated from Rutgers University with a Bachelor of Science Degree in Business and a Masters Degree in Business.

Teaching experience includes, adjunct faculty at Rutgers University, Rider University and the Graduate School of Business at Fairleigh Dickinson University.

While serving on the BOE he served on a variety of board committees including Buildings and Grounds, Finance, Personnel, Negotiations, Municipal Liaison and Legislative Delegate.

Mikorski as been active with South Plainfield Vision 2001 Foundation and the school district's Wall of Fame Committee, is a member of the board of directors at the General Hospital Center of Passaic, an invitee to the board of directors of the Atlantic Healthcare Hospital Systems and a member of the advisory board Bloomfield High School Cooperative Education. He also serves as vice-president of the South Plainfield United Way and is vice-chairman of the State AARP Legislative

Committee.

Mikorski believes in quality education, accountability and independence with no obligation to special interests. He also believes strongly in being active in the State Legislature, with particular emphasis on insuring that South Plainfield receives its fair share of State Aid dollars and in maintaining a cooperative relationship with the municipal government and in sharing services, plus encouraging and cultivating cooperation with businesses and industry.

Susan Peck moved to

South Plainfield 2½ years ago and lives on Woodland Ave. She has two children, Jennifer, a sophomore at Douglass College and Alan, a senior at SPSHS. She is employed as a program administrator under CDBG for Edison Township.

She served on the American with Disabilities (A.D.A.) Commission and the Middlesex County Homeless Housing Task Force. She was also a girl scout leader, an Edison Youth Girls Basketball Coach, a Washington School PTSO Board Member (in Edison) and served on the Coalition for a better Edison.

Susan said, "I am running because I have always been interested in public service. With my experience in budgets and grant-writing, as well as assessing community needs, along with my government background, I can be an asset."

"With hard work and new ideas, an excellent education can be provided for our children, while still maintaining a fair tax rate. It is important for every community to balance these two interests," she adds. "As someone with a background in public service and as a parent, I feel I know both the needs of the community and the educational needs of our children. Through new initiatives and innovative programs, I believe

Continued on next page

**Log on to the
Borough of South Plainfield's
official web site at
southplainfieldnj.com**

Visit your community web site for the latest local news on

- Mayor and Council
- Planning Board & Board of Adjustment Agendas
- Police - Fire - Rescue Squad
- Recreation
- Youth Activities
- Senior Corner
- Professional & Business Directory
- Community Bulletin Board
- Civic Organizations
- Election Results
- and more

*Advertise your business and support
South Plainfield's own web site*

For rates or information email at: southplainfieldnj.com
Or call 908-226-7656

**TAX RETURNS PREPARED • WILLS, CLOSINGS
INDIVIDUAL AND BUSINESS • PERSONAL INJURY
WORKERS COMPENSATION**

**PAUL W. GRZENDA
CERTIFIED PUBLIC ACCOUNTANT
ATTORNEY AT LAW**

HOUSE CALLS AVAILABLE

SO. PLAINFIELD OFFICE Tel.: (908) 769-8602

Starr Radiator Service
"SAME LOCATION SINCE 1971"
700 Hamilton Blvd. • So. Plainfield
561-6263

Auto • Truck • Industrial Parts & Service • Radiators • Heaters
Air Conditioner Service
Gas Tanks • Aluminum & Plastic Repairs & Replacements

Meet the Board of Education Candidates

Continued from previous page

we can find new ways to save taxpayer's money and still provide a quality education for our children."

Ideas and/or solutions include requesting a comprehensive and realistic report that outlines the future demands on the school system and to review the present board's reports on current enrollment and actual class size. Then the board can determine the actual needs of the school district. She also suggests researching State Aid available to impacted school districts, entering into joint ventures when making any purchases and beginning a credit card program whereas the school system joins with a bank and a percentage of all purchases are given back to the school system and to vigorously pursue all grants and state aid available. She also feels that a better communication should be developed between the board, the teachers, the parents and the taxpayers.

Robert C. Podlovits

has lived here since 1987 and has family who have lived here for over 35 years. He and wife, Karen, have two girls ages six and two, Kathrine and Kara.

Podlovits has over 20 years experience in the financial industry from accounting to management of operations.

He is a former member of the Taxpayers Advisory Group of South Plainfield and a former executive board member of the Hospital Board of Elmhurst General of Queens, New York.

His reasons for running are,

"To improve the 'Quality of Education' in this school system. I am tired of seeing statistics on the poor performance of the schools in this town and the poor performance of students graduating into top ranked colleges."

"What I hope is that voters do go out to vote on April 18, not only to vote for me to set policies to improve the education, but because the school budget makes up 62 percent of their taxes! The people need to know what delegates stand for and how their values affect their decisions. Don't just vote because you see a sign with a name on it! Most of those people have relatives who work in the school system," he adds.

"I am a strong believer that it takes teamwork to set policies. The community, the schools, and the planning board all have to work together in creating the future direction of this town. Working as a team builds property values, produces better students and creates an atmosphere of trust and stable community living."

Podlovits says that some of the problems facing the schools are student overcrowding, improved educational means, i.e. computer technology, budget and building improvements, as well as recreating values. "The solutions vary, but I use what I termed GPA thinking. Some educators will immediately say grade point average? I guess it's appropriate in this atmosphere but it means Goals, Performance and Action. This town and educational system need to set goals, followed by objectives for performance, and finally institute action plans to help meet the goals," he adds.

Vision 2001 Car and Truck Show

Vision 2001 Education Foundation, along with the Northwest Jersey Camaro Club, will hold the Annual Car and Truck Show to benefit South Plainfield Vision 2001 Education Foundation on Sunday, May 21 (raindate, May 28) at 9 a.m. in the high school parking lot.

Donation is \$2 for spectators. Door prizes, 50/50 drawings, food and beverages will be available. Miss New Jersey and Wacky Wayne the DJ will be there.

Reserve space early. All show cars must be in the parking area by noon. Preregistration is \$12 and \$15 on the day of the show. Registration closes at noon on the day of the show. Deadline is April 30. Vendor cost is \$20 and the Car Corral is \$15.

For info, call Tom, (908) 755-6276; Dorothy, (973) 584-1542 or Ed, (609) 586-5222.

Red Cross and New Jersey Blood Services Need Your Help

These two non-profit organizations are working together to supply the need of blood in our area hospitals. There is no substitute for human blood and it must always be available. Patients can only receive blood if members of our community donate it.

More than ever before, blood donations are needed to provide a continuous and safe supply for hospitalized members of our community. Blood is perishable and the need for blood is increasing yearly due to scientific advancements necessitating the use of blood for the treatment of various diseases.

ARC and NJBS has put out a call to meet this increased need. With this call we expect our regular donors to attend and we hope that those of you who have never taken part in this important effort will join us in the effort to save lives. Think about the tragic consequences if you, a family member or friend needed blood and blood was not available.

You may donate every 56 days and you can resume all normal activities after donating. All donated blood is tested by six different tests, including HIV antibody (AIDS). All positive test results are communicated to the donor confidentially. You cannot get AIDS from donating blood.

To be a donor you must be between 18 and 75 years old, in good health, weight 110 pounds or more. You need to bring ID.

The open blood drives schedule for April are: Apr. 6, 3 to 8:30 p.m. at the Edison First Aid Squad at 848 New Dover Rd., in Edison; Apr. 11, 3 to 8:30 p.m. in Scotch Plains Baptist Church at 333 Park Ave., Scotch Plains; Apr. 12, 12 to 5:30 p.m. at Warlow Harter Upper School, 1295 Inman Ave. in Edison and Apr. 18, 3 to 8:30 p.m. at Hyewood Park Baptist Church on Norwood Ave. in North Plainfield.

We need your help. Please sign up to donate blood. For more information, please call Rosi Merg at (908) 353 2500.

In My Opinion

Continued from page 2

South Plainfield have some serious thinking to do. We are faced with some major issues and decisions in our near future and need strong leadership in our new board of education. Luckily, one candidate in the running is a man of excellent leadership and intellect. I will be casting a vote for Richard Gumina (Line 7) and I encourage the voters of South Plainfield to do the same.

Rick is an excellent choice for a seat on the Board of Educa-

tion. He has lived in our town for almost twenty years. Rick has made it a point of becoming informed on the issues relating to our schools over the years. He is well aware of both our current school situation and the needs of our future.

Rick is a strong proponent of improved communication among the public, the staff and the board. He feels it is vital for these three components of our educational system to work together in order to achieve a strong and successful school system. He holds a positive view of change. Rick believes that solutions often result when situations are looked at with new points of view and perspectives.

Those of us who know him personally are struck with his ability to approach situations in a direct, logical, and practical manner. Rick believes in learning the facts, paying attention to details, and listening to various points of view before making decisions. He has the interest, the integrity and the initiative to make a difference in our board of education.

I encourage everyone to join me in voting for Richard Gumina, Line 7 in our upcoming board of education election.

**SINCERELY,
MARY WIECZOREK**

To the Editor,

Generally speaking, when a senior citizen runs for public office, the main campaign centers

on "cutting spending." Generally speaking when a parent of school age children runs, the main campaign centers on providing the "best for our kids." It is almost as if these two main issues are in direct conflict.

Loretta Cooper is the one candidate who can positively address both issues when she serves on our Board of Education. She is a widowed senior citizen who lives daily with the reality of "fixed income." She is a young-at-heart grandma, who voluntarily devotes her days to helping out in our high school just so that she can "be there" for the kids.

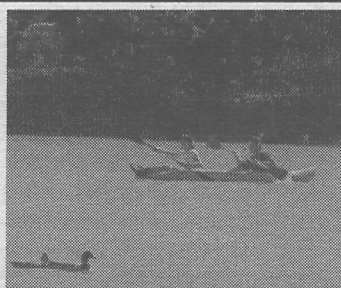
Loretta Cooper has given South Plainfield thirty-five years of service to the Pop Warner Cheerleading Program. She has given over ten years of service to our PTA, serving as member, officers and president for Grant School. She has served South Plainfield Schools for over six productive years as a member of our board of education. She has given more than two years of her time to be of service to our kids at the high school.

I don't think there is a current board of education member nor candidate who has done as much for our community. Loretta Cooper has given of her time and her heart without any personal agenda. The only agenda for anyone associated with our schools is Loretta's agenda: 'DO IT FOR THE KIDS.'

ELAINE VIOLA



**There's
a lot
going on....**



**in
South
Plainfield!**



**Subscribe
South Plainfield
Observer
908-668-0010**

Send a check or money order for \$25/one year (out-of-town-\$30) payable to: South Plainfield Observer, 1110 Hamilton Blvd., Suite 1B, South Plainfield, NJ 07080. Or order your subscription via email at nancyg@spobserver.com and send your check to the above address.

✓ Please send me home delivery of the Observer.

NAME _____

ADDRESS _____

PHONE NUMBER _____

**Carousel
Hair Salon**

**Look Your
Best for
Easter!**

The Family Place

908-668-8397

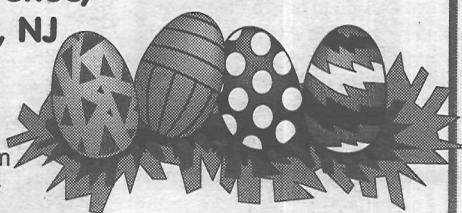
**307 Oak Tree Avenue,
South Plainfield, NJ**

Tues • Wed • Thurs

• Fri 8am-4pm

Saturdays • 6:45 am-3 pm

Closed Sunday & Monday



Obituary

Basilio Lopez-Ramos

Basilio Lopez-Ramos of Plainfield, died on Tuesday, March 28 at Muhlenberg Regional Medical Center in Plainfield.

Born in Caguas, Puerto Rico, Mr. Lopez-Ramos came to the United States in 1955. He resided in the Bronx before moving to Rahway in 1970 where he lived before settling in Plainfield five years ago.

Mr. Lopez-Ramos was a Bio-Chemist for Merck & Co. in Rahway for 25 years, working in the Therapeutic Research Department before his retiring in 1982.

He was educated at the University of Puerto Rico, where he

earned his bachelors degree as a Chemical Engineer in 1946. He later continued his studies in the United States at Fordham University in N.Y.C., where he earned his master degree in Bio-Chemistry.

His wife, Delia Lopez, died in January of 1990.

Surviving are his son, Basilio F. Lopez of Virginia; his granddaughter, Gabriela Lopez of Virginia, his grandson, Basilio A. Lopez of Colorado, his dear companion, Catalina Montero of Plainfield and his brother, Juan Lopez-Hernandez of Puerto Rico.

Funeral arrangements will under the direction of McCriskin Home For Funerals.

April 15 Deadline for Pool Discounts and Free Passes

Residents can still take advantage of the early bird discount at the South Plainfield Community Pool. These discounts are in effect only until April 15, then the price goes

up. A brochure explaining the pool's fees, discounts, hours of operation, guest fees and information about lessons and recreation programs offered this summer is avail-

able by calling 226-7713 or stopping by the Recreation office.

Sign ups for pool memberships will take place only at the Recreation office—no applications will be taken at the pool facilities.

The community pool will be opening on part-time basis starting on June 3. Summer hours will be starting on June 25.

This year's members will receive 10 free passes with their membership. This offer also expires on April 15.

Guest pass books which contain 10 daily passes may be purchased by members at \$50 per book. There is a limit of one book per month. This offer also expires on April 15.

General daily admissions are permitted into the pool. Everyone must provide proper identification.

Pro-Wrestling Spring Breakout Takes Place Saturday Night

The South Plainfield High School Athletic Booster Club are sponsoring the Pro-wrestling Spring Breakout, featuring superstars from the WWF and the National Wrestling Alliance on Saturday, April 8 starting at 7:35 p.m. in the South Plainfield High School gym.

Wrestling stars include The Mean Street Posse, Gilbert, Extreme Stars, Axl Rotten, Fronus, Pitbulls, Equilizer and 911. A women's

NWA title match will feature Nicole Bass. Also appearing will be as special guest manager, South Plainfield's own, The Tuna and many more celebrities.

Tickets can be purchased at B&C Deli on Belmont Ave., Sal's Spirit Shoppe on Park Ave., the PAL Building on Maple Ave. and Learning Express in Oak Park Commons.

All proceeds benefit the Booster Club.

By Cyrus N. Moon

Weekly Horoscope 4/7-4/13

★★SEE FREE OFFER AT BOTTOM — YES, I SAID FREE! ★★

ARIES 3/21-4/19 This week mental energy will be high! So keep that mind of yours busy. Also these energies could lead to arguments. This could be productive or destructive. It depends a lot on the purpose and the people involved. Egos can get in the way. So think your side out and evaluate!

TAURUS 4/20-5/20 Interactions are apt to trigger more serious responses than circumstances. If something is said or done in an innocent, social or lighthearted context, it may stir up old memories and or resentment. Do not come back at that person and deliberately arouse jealousy. It can backfire.

GEMINI 5/21-6/20 Information, ideas, and activities you encounter during this week have the potential to enhance your intellectual endeavors and boost your

economic or social status. And don't be surprised if you receive some information about your father at this time. Avoid overconfidence!

CANCER 6/21-7/22 This is a time when others may have the need to express the problems they are having with you, and you may not like what you hear. But this is a time when tensions can be and should be released. I would say just don't hold back. And be honest about what you have to say!

LEO 7/23-8/22 Be aware that a mini-crisis can appear. Anything from pressure from the boss to a machine that breaks. And you know the work won't get done till the machine gets repaired. Be ready! You could be challenged to defend your past ideas or your past actions.

VIRGO 8/23-9/22 Everything should run smoothly for this week. Most likely you will read or hear about some emotionally uplifting news. If you are requested for you're help in any area, you can gain a personal advantage for providing this favor. Visit a family member, its long overdue!

LIBRA 9/23-10/22 This is a really good week for all financial enterprises, for those involving foreign investments or the law. A new friendship or love relationship that starts this week has a wonderful chance of working out. So if you spark up a conversation, you may find you are glad you did.

SCORPIO 10/23-11/21 Something in your life needs to be redefined, eliminated, transformed, or rejuvenated. You probably already know what it is, even if you're reluctant to admit it to yourself. Also you may need to claim your own power because if you don't an issue may be forced on you.

SAGITTARIUS 11/22-12/21 Now is the time to appreciate the organization you have worked to achieve and the knowledge you have managed to acquire.

You may find someone is willing to reward you nicely for your advice and consultation. And why not! You worked hard for it.

CAPRICORN 12/22-1/19 This is a time in your life to be giving back some of what you have been given in life. If you have gained wealth it is time to be philanthropic. If you have gained experience, share the knowledge! Any cultural pursuits you have go at them with vigor but at a steady pace.

AQUARIUS 1/20-2/18 This is for you who are single. WHAM! There is a good chance that you will meet someone new. If you never were hit with love at first sight, well get ready for a ton of bricks to fall on you. Just be aware that things can look differently the next day. Watch impulsiveness.

PISCES 2/19-3/20 If you place yourself in beautiful surroundings, such as a pleasant country spot, a beautiful garden or a striking landscape, this will have a very powerful effect on you. If you wish; this would be a wonderful week to experience a real feeling of true existence with another in your life!

FREE: A one-month free horoscope. Just like you read in the paper that is based on the date, time and place of your birth. All are vital! If no time available then specify 12 a.m. or 12 p.m. Send one-dollar to cover shipping to: **Cyrus N. Moon, PO Box 863, South Plainfield, NJ 07080.** You may give me any start time example 4/1/00 to 5/1/00 or pick any time in the past, example 7/1/94 to 8/1/94 and compare it to a diary or journal. You have a special occasion happening in 7/13/01 to 8/13/01. So give it a try, nothing to lose, and the best part it's free. Also include town that you want your horoscope to be done in or I will default it for South Plainfield. This will cover between 7 to 10 pages. And I will also include a wheel chart.

LEGAL NOTICE

BOROUGH OF SOUTH PLAINFIELD

April 3, 2000

Public Notice is hereby given that the following action was taken by the Planning Board of the Borough of South Plainfield at its meeting held on March 28, 2000.

Case No. 578/V/S/A—South Plainfield Urban Renewal, L.P.—Block 113; Lots 1.01, 2, 4 & 5.01; Block 112; Lots 1 & 2.01; Block 111; Lot 4; Morris Avenue—Applicant's request for preliminary and final three lot subdivision and re-approve the applicant's request for six variances, with conditions, was hereby GRANTED.

Janice Muccilli
Secretary Planning Board

\$15.00

1T April 7, 2000

Because
We
Care

by Robert Hunter

LENDING COMFORT

If you have ever been at a loss as to what to say or do for grieving individuals, remember that sharing a fond memory of the departed person is always welcomed. It is also usually appreciated when a donation or some other type of memorial gift is made in the name of a person recently deceased. When paying a bereavement call, the gift of food is sure to be taken as a thoughtful and helpful gesture. If the offer of help is made, make every effort to follow through on the promise in a quiet and convenient manner. By the same token, friends of the bereaved should make it known that they are available to talk or "just be there."

Avoid attempts to minimize the profundity of a mourner's loss; grieving is difficult enough without having to defend your right to do so. All of us want to lessen the pain of those who are dear to us, but a better course is to stand by them through the long and difficult process of adjusting to their loss. At the JAMES W. CONROY FUNERAL HOME, we provide professional and courteous service to members of all faiths and beliefs. To learn more about our wide range of services, please call 756-2800. We are located in South Plainfield, at 2456 Plainfield Avenue.

"Like a bridge over troubled water,
I will ease your mind."

— Paul Simon

Consideration

It is far easier for the family if a family plot is arranged prior to need. The considerate staff at Hillside Cemetery will assist your selection. All lots are in fully developed areas and include perpetual care. Located on Woodland Avenue in Scotch Plains, a non-profit organization. 908.756.1729

Hillside Cemetery

www.hillsidecemetery.com

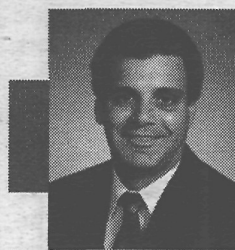


(908) 561-8000

HOME FOR FUNERALS

2425 PLAINFIELD AVENUE
South Plainfield, NJ 07080
FAX (908) 561-6744

RICHARD W. McCRISKIN, Pres., Mgr.
William C. McCriskin, V. Pres., Dir.
James A. Gustafson, Dir.
James F. Connaughton, Assoc. Dir.



The Alternative View

By Dr. Anthony J. DeCosta, D.C.

Dear Dr. DeCosta: Do you have any information on some recent studies that link the DPT and Tetanus vaccinations to causing asthma and allergies in children? — C.S.

Dear C.S.:

There is a new study in the *Journal of Manipulative and Physiological Therapeutics (JMPT)* which supports the findings of three previous studies that children who receive diphtheria-tetanus-pertussis (DPT) or tetanus vaccines are more likely to have a "history of asthma" or other "allergy-related respiratory symptoms." The study was conducted by the National Center for Health Statistics who reviewed data from the Third National Health and Nutritional Survey from 1988 to 1994.

The *JMPT* study addresses an issue that has much supporting evidence:

- The prevalence of allergic disorders has doubled over the last 20 years.
- In the U.S., there are currently 30-50 million asthma and allergy sufferers, with an estimated cost of \$6.21 billion in 1990.
- The Institute of Medicine, which convened two committees (the Committee to Review the Adverse Consequences of Pertussis and Rubella Vaccines and the Vaccine Safety Committee) concluded that there is a causal relationship between the DPT vaccine and anaphylaxis, and tetanus toxoid and anaphylaxis.

The results of the *JMPT* study demonstrated that those children who had been given DPT and tetanus vaccination had significantly greater odds of asthma and allergy-related symptoms than those who had remained unvaccinated.

According to the study's odds ratios, a child who had the DPT and tetanus vaccination is 50% more likely to experience severe allergic reactions, over 80% more likely to experience sinusitis, and twice as likely (100% more likely) to experience asthma.

In addition to these findings, the authors commented:

- "Evidence was also presented showing that vaccination may be associated with different types of allergies at different ages. The vaccination may be associated with severe allergic reactions and sinusitis or sinus problems among younger children, and with asthma, wheezing and whistling, and nose and eye symptoms among adolescents."
- "Six studies have recently addressed the association between pertussis or DPT immunizations and allergy-related disease. Our results are similar to findings reported from three retrospective cohort studies."
- "Asthma and other allergic hypersensitivity reactions and related symptoms may be caused, in part, by the delayed effects of DPT or tetanus vaccination. One or more vaccine components may be responsible for a portion of the increased prevalence of asthma and allergies in U.S. children."

• "Because the proportion of U.S. children who have received at least one dose of DPT vaccine approaches 100%, the number of allergies and allergy-related conditions attributable to DPT or tetanus vaccination in the United States may be very high. For example, assuming that the estimated vaccination effect is unbiased, 50% of diagnosed asthma cases (2.93 million) in U.S. children and adolescents would be prevented if the DPT or tetanus vaccination was not administered. Similarly, 45% of sinusitis cases (4.94 million) and 54% of allergy-related episodes of nose and eye symptoms (10.54 million) in a 12-month period would be prevented after discontinuation of the vaccine."

Questions for *The Alternative View* should be addressed to: *The Alternative View*, c/o Dr. Anthony J. DeCosta, D.C., 129 South Plainfield Ave., South Plainfield, NJ 07080. Visit *The Alternative View* on the web at www.usalternativemedicine.com

Find what **you're looking**
for in the

Business & Professional Section

Every week in the *Observer*.

To advertise, call 908-668-0010.

Vision 2001 Selling Annual 50/50 Tickets

Raffle tickets benefitting Vision 2001 are now on sale. Last year's winner received \$3,700. The winner will be announced at the Art Auction held on Friday, April 14 at the high school cafeteria.

Vision 2001 Educational Foundation is a not for profit tax-exempt organization which was created to raise funds for students programs in the South Plainfield School District.

One of the important fund-raising activities that takes place prior to and during the Annual Art Auction is the 50/50 raffle. The funds raised are used to en-

courage good citizenship as well as academic achievement. Since its founding in 1994, the foundation has awarded 48 scholarships with a value of over \$64,000 and \$62,500 in scholarship endowments. It has donated over \$25,000 for student curriculum programs and almost \$20,000 for academic incentive programs.

Your support of the 50/50 raffle and the art auction will be used to help the children of South Plainfield prepare for their future in the new century.

To purchase tickets call (908) 756-8038.

Spisso Family Renews Hamilton Blvd. Adoption

Brian Spisso and his family have renewed their Adopt-A-Spot agreement with the South Plainfield Clean Business Association for the year 2000. They will continue their maintenance of the stretch of Hamilton Boulevard between Somerset Avenue and Pomponio Avenue.

The Spissos had been maintaining this block for some years, out

of concern for the safety of the children as they walked to school under overhanging poison ivy. They joined the CBA's program in 1997. Their agreement includes picking up litter and trimming grass along the road as needed.

For more information about the Adopt-A-Spot program, contact the Clean Communities Coordinator at (908) 226-7621.

Wanted: Crew Members from Seven Ships for Reunion

A reunion is being planned in Newport News, Va., Oct. 19 to 22 for former crew members of the seven ships of the DeSoto/Suffolk County Class LSTs. These ships are the USS DeSoto County, LST-1171; USS Suffolk County, LST-1173; USS Grant County, LST-1174; USS York County, LST-1175; USS Graham County, LST-1176; USS Lorain

County, LST-1177 and USS Wood County, LST-1178. An effort is underway to acquire the USS Lorain County as a memorial by the Ohio War Memorial, Inc. of Lorain, Ohio.

For information contact Charles C. Patton, Ohio War Memorial, Inc., P.O. Box 307, Lorain, Ohio 44052 or (419) 872-9555. Email to dabookma@wcnet.org

Anton Juttner Photos Featured in Borough Hall

Those of you who have visited Borough Hall recently may have noticed the photographs displayed in the hallway. They feature outdoor and nature photographs, mostly from the Garden

State, the NY Skyline and fireworks displays by former resident Anton Juttner. The photos will be on display until April 30. For information, call (732) 563-4117 or 563-0855.

South Plainfield
Observer

To place an ad call 908-668-0010
or fax 908-668-8819.

Classifieds

Rates -- 3 line minimum-\$10, \$1 ea. additional line.

FOR SALE

NORDIC TRACK

Special Edition Cross Country Ski Exerciser. Like new. \$150. Was \$513. Call 908-757-8364.

CEMETERY PLOTS

Two cemetery plots for sale-Somerset Hills, Basking Ridge. \$1,500 or best offer. (732) 572-7126 after 2 p.m.

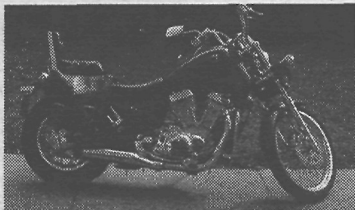
LAND

100X200 Bldg. Lot/SOMERSET \$62,900. Residential neighborhood. Corner lot. Call Susan at Prudential Golden Key Realty, ext. 30. 732-560-0665.

TIRES

Winter Radial Snow Tires, P205/70/14 on Rims. \$75. 732-545-3132.

MOTORCYCLE



MOTORCYCLE FOR SALE 1994 SUZUKI INTRUDER 800 w/ Saddle Bags and pouch. Under 1500 miles. Mint condition. Must see. \$4100. 908-668-0010

AUTO

92 MAZDA PROTEGE, 4/DR, 5/SPD, new brakes, exhaust system, radiator. Extremely reliable. \$3500. 732-545-3132.

FURNITURE

EXCELLENT CONDITION-ALMOND color wall unit. Three units totaling 96" wide. Trimmed in brass, this unit can hold up to a 36" TV. Enhanced by two lighted/glass units for displaying all of your treasured items, and a drop down section that can be used as a bar. Plenty of storage for all electronic/video/audio needs. 8 feet wide x 7 1/2 feet high x 1 ft, 9 in. deep. Purchased for \$3,500 (have original receipt) but willing to sell for \$1,500 or best offer. Pic avail. 732-699-3227.

The Abbington Apartments, presently under construction on Durham Road in South Plainfield, is now accepting applications for their Affordable Housing Program. Please review the income parameters below to determine if you pre-qualify for an apartment home. Occupancy will be between May and December 2000.

Low Income

1 Person	1 Bdrm	\$21,600-\$26,845
2 People	1 Bdrm	\$21,600-\$30,680
2 People	2 Bdrm	\$26,820-\$30,680
3 People	2 Bdrm	\$26,820-\$34,515
3 People	3 Bdrm	\$29,700-\$34,515
4 People	3 Bdrm	\$29,700-\$38,350

Moderate Income

1 Person	1 Bdrm	\$33,300-\$42,952
2 People	1 Bdrm	\$33,300-\$49,088
2 People	2 Bdrm	\$39,600-\$49,088
3 People	2 Bdrm	\$39,600-\$55,224
3 People	3 Bdrm	\$47,340-\$55,224
4 People	3 Bdrm	\$47,340-\$61,360

The Abbington Rental Rates

Low Income

Floorplan	Qty	Rent	Sq. Ft.
1 Bdrm	3	\$600	898
2 Bdrm	11	\$745	1,106
3 Bdrm	5	\$825	1,106

Moderate Income

Floorplan	Qty	Rent	Sq. Ft.
1 Bdrm	3	\$925	898
2 Bdrm	12	\$1,100	1,106
3 Bdrm	4	\$1,315	1,106

APPLICATIONS ARE PRE-QUALIFIED BY THE TOWNSHIP OF SOUTH PLAINFIELD AND WILL BECOME AVAILABLE ON APRIL 3, 2000. You may pick one up at South Plainfield Borough Hall, 9am to 5pm, Mon through Fri; South Plainfield Public Library, Mon-Wed-Thurs 10am to 9pm, Tues and Fri 10am to 6pm, Sat 9am to 5pm, and Sun 1:30pm to 5pm. You may also call The Abbington for further details at 877-263-8100. An application fee of \$25 is required for the Pre-Qualification process. Additional fees are necessary for final application, security deposit, and amenity fee.

EQUAL HOUSING OPPORTUNITY

DIRECTIONS TO THE ABBINGTON: From 287 North-Take Exit 4 - Durham Ave, South Plainfield. Make a Right onto Durham Ave, the property is on the left. From 287 South-Take Exit 5 - Stelton Road. Bear Right off exit ramp onto Stelton Rd. At the light make a Left onto Hadley Rd. Follow Hadley Rd. to Durham Ave, make a Left. The property is on the left.

FOR SALE

BLACK LACQUER DINING RM SET w/6 chairs. Elongated octagon black lacquer table w/faux marble design. Inc. 1 leaf, 3 custom table pads and 6 solid black lacquer w/white tone on tone dining chairs. Table size: 43" x 90" (inc. 17" leaf). **DINING ROOM HUTCH/WALL UNIT**-3-pc black hutch (2 triangular end pcs. & one rectangular middle pc). Each unit has 4 lighted black shelves. Unit is controlled by one light switch inside hutch. The front of each unit has 4' of glass doors w/chrome handles & 2' of mirror. 6 1/2"x 6 1/2". End units are 21"x 21" Middle unit is 15" x 34" Asking \$1300. for dining room set & hutch - pics avail!

FOR SALE

Best Offer-MUST SELL!!!! 908-369-7560 or 732-699-8003.

WANTED

WANTED-DOG RUN, THIS END UP FURNITURE and Little Tykes twin size car bed. Call 732-786-1306.

PHOTOGRAPHY

COPIES OF OBSERVER PHOTOS for sale. Call Pattie at 756-8011 or 668-0010.

business & professional directory

**ADVERTISE
YOUR
BUSINESS
IN THIS SPACE
FOR \$15
PER ISSUE.**
908.668.0010

SWEDISH MASSAGE

SOLARIS 
Holistic Health Center

SWEDISH MASSAGE
"Specializing in Hot Stone Massage"
THE PERFECT GIFT CERTIFICATE FOR
Mother/Fathers Day * Birthdays *
Anniversaries * Special Occasions
Roxanne Cortese, C.H.P.
Complementary Healthcare Provider
2701 Park Ave. So. Plainfield, NJ
(908) 561-1511

CHIROPRACTIC

*Sick & tired of
being sick & tired?*

**...TRY
CHIROPRACTIC!!**

The drug-free alternative to better health.

Dr. Anthony J. DeCosta

Family Practice of Chiropractic
129 South Plainfield Avenue
South Plainfield, NJ 07080
(908) 755-1117
Serving the area for over 22 years.

CONTRACTORS

**BUILDER &
GENERAL CONTRACTOR**

NJ DCA LIC #019771
Since 1981

Lordina Builders
908-753-3850

ADDITIONS-KITCHENS-
BATHROOMS-
Office Renovations

FREE ESTIMATES

ROOFERS

**J.T. PENYAK
ROOFING CO.**

COMMERCIAL INDUSTRIAL
RESIDENTIAL

908-753-4222

FAX 908-753-4763

124 CAMDEN AVE.
SO. PLAINFIELD, NJ 07080

TOP SOIL, MULCH, STONE

Call 
KLK Trucking for:

Top Soil, Mulch, Sand,
Infield Mix, Decorative
Stone, Crushed Stone

Pick up or Deliv., Mon. thru Sat

908-757-4434

265 Ryan Street
South Plainfield

LANDSCAPING

908-769-7137

SUNSET LANDSCAPING

**QUALITY
LAWN CARE**

Pat Millard • So. Plainfield

**NEED
HELP?** Find it in the
Observer Business &
Professional Section.

BUSINESS OPPORTUNITY

**VENDING MACHINES
PLACED ON YOUR
BUSINESS SITE AT
ZERO COST TO YOU!**

FOR DETAILS CALL
908 757-4166
ASK FOR BOB

ASK ABOUT THE
SOUTH PLAINFIELD
BUSINESS DISCOUNT



GARBAGE DISPOSAL

**PINTO BROTHERS
DISPOSAL**

Andrew & Matthew Pinto

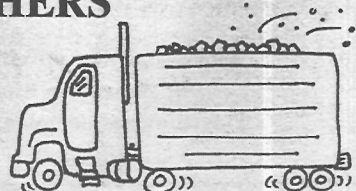
P.O. Box 263
So. Plainfield, NJ 07080

Phone **908-561-8231**

Fax 908-561-9889

CONTAINERS FROM 1 TO 40 YARDS

Residential, Commercial & Industrial Service



TOMMY Opens

Continued from page 1

show presented Shayne a real challenge. Shayne said, "It was the hardest show I have ever directed. There are many scene changes that can make the show confusing to people, hard to follow. It was a lot of work but we have created a show that is fast-paced, energetic, visually dazzling and overflowing with talent, both on-stage and off." Shayne adds, "Of all my productions at South Plainfield High School, *Tommy* will be the one to take down the walls and pump up the town."

Music Director Tracy Murray said, "This show is about singing. It was challenging in that it had a lot of high notes that the students are not used to singing. Everyone had to work hard on the vocals, especially the principal characters. If you've never seen a SPHS show, this is *the one to see!*"

Tommy takes place in London and covers several decades, beginning with his birth and the early years of WWII. As a young boy he witnesses a murder. His mother and father tell Tommy he did not see or hear anything. The result: four-year-old

Tommy takes the command literally and becomes deaf, dumb and blind. The show follows Tommy as his alcoholic uncle Ernie and bully cousin Kevin take advantage his shock-induced, psychosomatic disabilities. Tommy is obsessed with a mirror that he turns to throughout the show. He 'sees' his younger selves at ages four and ten. Tommy's uncanny ability to play pinball turns him into a "sensation" and he develops disciple-like fans such as the psychotic Sally Simpson. With Tommy's sudden cure comes disillusionment for both Tommy and his fans.

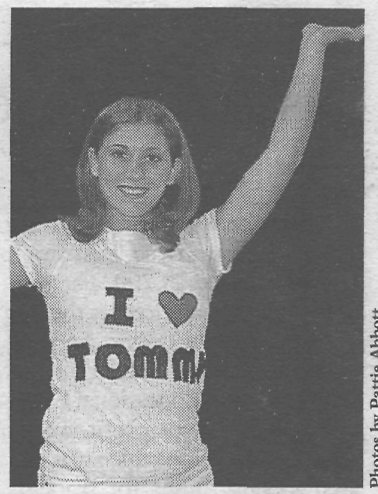
Three performers portray Tommy as he ages from 4 to 20; each adds his own special touch to the role. Four year old Tommy is played by Jake Butinski, and ten year old Tommy by Chris Imbrosiano. Twenty year old Tommy also narrates the show; this role is played by Jason Kollarik.

Staff for the spring musical is as include Director-Shayne Austin Miller, Vocal Director-Tracy Glenn Murray, Original Choreography-Ammie Andrews, Orchestra Director-Bruce Mikolon, Technical Director/Production Stage Manager-Joe LaJeunesse, Assistant Director-Jennifer Sciacitano, Assistant Vocal Director-Lawrence Street, Producer-Jan LaJeunesse and Maureen Imbrosiano, Assistant Producer-Creighton Pfeifer, Costume Design-Kristen Umansky, Lighting Design-Ana Lianos, Prop Design-EJ. DeRobertis and Sound Design-Mark Tweed.

Tommy opens in the South Plainfield High School Auditorium on Thursday and Friday, April 6 and 7 at 7 p.m. and Saturday and Sunday, April 8 and 9 at 2 p.m. Tickets are \$8 for adults and \$5 for students and are available at the door or by calling 561-4416.



Mr. and Mrs. Captain Walker (Tommy's parents) Laura Walter and Matthew Pulomena



SALLY SIMPSON- Kristin Ciarlariello

Photos by Pattie Abbott

Who's Who in "Tommy"

■ SPHS senior **Laura Walter** portrays Tommy's mother, Mrs. Walker. Her past credits include Clarice in *West Side Story* at Kean University, Zaneeta in *The Music Man*, Audrey in *Little Shop of Horrors*, Adelaide in *Guys & Dolls*, and Mary in *Godspell*—all productions on the South Plainfield stage.

■ Junior **Matthew Pulomena** is Tommy's father Captain Walker. This is his debut performance. Matthew studies voice with Tom Smargiassi III and has played the guitar for five years, piano for six years and recently produced an album with his band, *Newworld*.

■ Senior **Brad Tierney** is the villainous Uncle Ernie. Last year he appeared as Mr. Mushnik in *Little Shop of Horrors*. Other past roles include various parts in *A Christmas Carol* and a disciple in *Godspell*. Brad is currently president of the Drama Club.

■ **Jason Kollarik** is Tommy/Narrator. This is his second production with the South Plainfield Players Drama Club. Previous roles include Seymour in *Little Shop of Horrors*, Snowboy in Kean University's production of *West Side Story*, Benny Southstreet in *Guys & Dolls* and Charlie Brown in *A Charlie Brown Christmas*.

■ **Jake Butynski**, an eight-year-old Riley School student, joins the cast of *Tommy* as four-year-old Tommy. He was discovered during the Grandparents Day show at his school. This is Jake's acting debut.

■ Freshman **Chris Imbrosiano** plays the role of ten-year-old Tommy. Dramatic credits include performing with the Middle School Drama Club. He portrayed the Wizard in Summer Drama Workshop's *Wizard of Oz*. He has also appeared in *Oklahoma!*, *Guys & Dolls* and *The Music Man* with SDW. He has performed with Michael Talbenslaug Productions and attended Middlesex County Middle School of Arts. He is active in both high school chorus and band.

■ Junior **Leo Campos** appears as Lover and Hawker in *Tommy*. He was last seen as Luis in Kean University's production of *West Side Story*. He appeared in the drama club's 1999 production of *Little*

Shop of Horrors and with SDW's production of *The Music Man*.

■ Senior **Nicole Scavone** portrays the Gypsy Queen. Nicole is active with the school choruses. She is currently vice-president of the Drama Club. Her stage credits include *Godspell* and *Ronnette* in *Little Shop of Horrors* with SPHS Drama Club. She also appeared as Sarah Brown in *Guys & Dolls*. She also appeared as Pattie in *Leader of the Pack* at Villager's Theater in Franklin.

■ Junior **Kristyn Ciarlariello** plays Tom-

my fan Sally Simpson. Previous roles include Marian in *The Music Man*, Crystal in *Little Shop of Horrors*, Mimi in *Guys & Dolls*. She also appeared in *Godspell* and *Oklahoma!*. Other activities include cheerleading, student council, chorus and peer leadership.

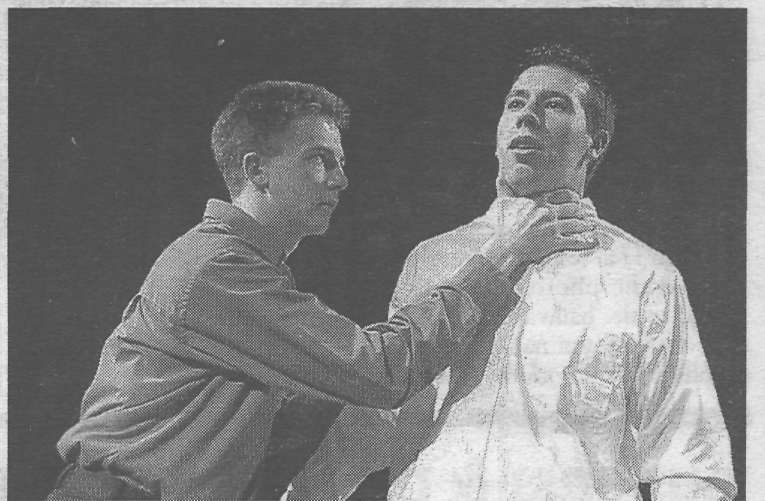
■ **Tommy Doyan** is making his stage debut on the SPHS stage as bully Cousin Kevin. He was a member of the pit orchestra for *Godspell* and *Little Shop of Horrors*. His previous roles include Mickey in *Fantasia* and The Cat in *The Cat in the Hat*.



UNCLE ERNIE—Brad Tierney



LOVER—Leo Campos



COUSIN KEVIN—Tommy Doyan (left) and TOMMY—Jason Kollarik

Sacred Heart Church

149 South Plainfield Ave.
South Plainfield, NJ

Very Rev. Michael A. McGuire, Pastor

Mass Schedule:

Saturday Evening Mass 5:45 p.m.

Sunday 8:00, 9:30, 11:15 a.m.

Weekdays 9:00 a.m. (church)

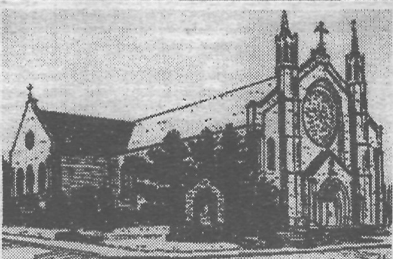
Monday Eve. Mass with Miraculous Medal Novena Prayers 7 p.m.

Holy Days 7 p.m. (Vigil); 7 and 9 a.m., 12:10 p.m.

Sacrament of Reconciliation

Saturday 11 a.m.- 12 noon, 5:15 -5:45 p.m.

and after 5:45 p.m. Vigil Mass



Lions

Palm Sunday Breakfast

Sponsored by the South Plainfield Lions Club

Helping the Visually & Hearing Impaired Since 1947....

When: **Palm Sunday, April 16, 2000**

Where: **South Plainfield High School Cafeteria**

Time: **8:00 am to 12:00 noon**

Ticket Price: **\$5.00**

Tickets may be purchased at the door or through a Lions member.

For information, please call 755-2289.



Wayne Grennier

SALES REPRESENTATIVE

Resident of South Plainfield
For Over 30 Years

A real estate professional can determine the value of your home so it sells when **you** want it to.

An informed seller is a satisfied seller.

Before you sell, compare.

Weichert Realtors

We Sell More
Because We Do More



METUCHEN OFFICE
640 Middlesex Ave.,
Metuchen, NJ 08840



For a complimentary market analysis,
call Wayne Grennier at 732-906-8200.

Eves: (908) 755-8565 • Pager: 888-346-1314 • FAX: (732) 906-8109

Want to know what's going on in South Plainfield? Get home delivery of The Observer. Subscription form on page 9.