

The Chronicle

*****5 DIGIT 07080
S PLAINFLD PUB LIBRY/2-
2484 PLAINFIELD AVE
S. PLAINFIELD NJ 07080-3531

Since 1862

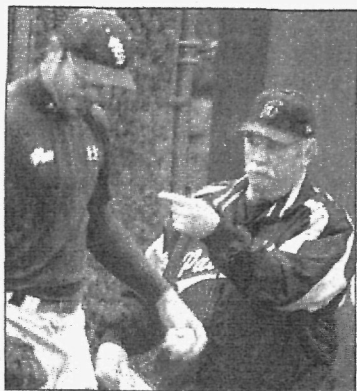
Vol. 146, No. 15

aturday, April 14, 2007

APR 16 2007

50 cents

INSIDE



Put me in coach

The Somerset Patriots recently held open tryouts hoping to find some new players to join the team in its 10th season. This weekend the Bridgewater-based baseball team is holding its annual Fan Fest.

For more on the Fan Fest, Page A2.

For more on the coming season, Page B1.



Art to take center stage

Aja Washington's "Originality/Copyright Poster" will be one of the many works on display at the Student Art Exhibition, which features artwork by students in Raritan Valley Community College's Visual and Performing Arts Department. An opening reception was held Friday.

Page A3.

A trip down the shore

PISCATAWAY — "Down the Shore: The Coastal Heritage of New Jersey" begins a 14-month run at the Cornelius Low House-Middlesex County Museum.

The exhibition opens Tuesday, April 24 and may be seen through June 15, 2008.

New Jersey's 127 miles of beaches have attracted thousands of people a year for many years. Resort towns, unique ecology, lighthouses, beaches, one-of-a-kind architecture, boardwalk rides, games and food all make going "Down the Shore" memorable. This exhibition includes funhouse mirrors, period clothing, a Skee-Ball machine, a Francis Life Car from the 1860s, a New Jersey "sneakbox," a lifeguard chair and boat, shipwreck remnants from coastal waters, a dress from the 1963 Miss America pageant, original seats from the Great Auditorium in Ocean Grove, a 1930s canvas kayak, three-dimensional cutouts, murals with a shore theme, a miniature beach and a small-scale boardwalk.

A reception will be held 2-4 p.m. Sunday, April 22. The Cornelius Low House-Middlesex County Museum is at 1225 River Road, just north of Route 18.

INDEX

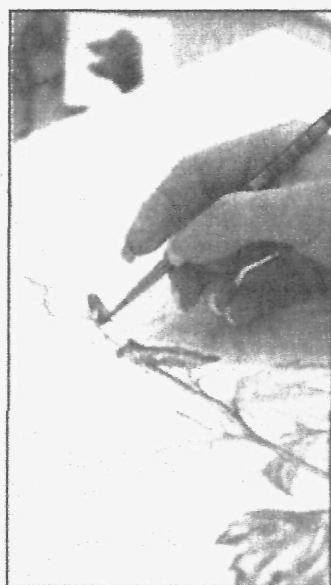
Community Life.....A3
SportsB1
Weekend Plus.....A4



Artist is inspired to teach others

At Studio 16, located in an addition of Mindy Lighthipe's Warren home, she offers classes, workshops, private lessons and studio time for novice and experienced artists. Lighthipe — seen at left — herself is partial to watercolor or colored pencils. "I tried oil, but I didn't care for it. I like the spontaneity of watercolors. I like to be able to mess up and change it."

PHOTOS BY GEORGE PACCIOLLO/
STAFF PHOTOGRAPHER



By AMY S. BOBROWSKI
Staff Writer

WARREN — Mindy Lighthipe's love of nature started with a childhood pet ant named Roger. Her artistic inspiration began with a box of Crayola Crayons.

Now, the Warren resident shares her knowledge of both disciplines with others at her home-based studio.

At Studio 16, located in an addition of Lighthipe's home at 16 Old Stirling Road, she offers classes, workshops, private lessons and studio time for novice and experienced artists.

The studio is fairly new, only in its second year, but Lighthipe stays busy. Classes range from Basic Drawing and Colored Pencil, Botanical Painting to specialty type courses in Painting Indian Corn, Lumps, Bumps & Grooves and Fundamentals of Composition.

Lighthipe herself is partial to watercolor or colored pencils.

"I tried oil, but I didn't care for it," said Lighthipe, who holds a bachelor's of fine arts degree and a master's degree in art education

from Kean University. "I like the spontaneity of watercolors. I like to be able to mess up and change it."

Though she is most comfortable with watercolors, Lighthipe, the vice president of The Guild of Natural Science Illustrators Greater New York Chapter, also likes to try her hand in other techniques. "I don't want to be stagnant. I'm going to try sculpture, which is new for me and I've tried polymer clay."

Currently, Lighthipe is exhibiting a watercolor painting the Philadelphia Flower Show, which focuses on flowers that look like their names.

"It's a Monk's Hood," said Lighthipe of her painting that depicts the small purple blossom tucked in a vase on her table. "The petal comes over, so it looks like a hood."

Another piece she'll have at the show is a painting of the Passion Flower, which resembles the Passions of Christ.

Lighthipe also coordinates artists' tours, where she guides a group through France, Costa Rica or other countries to draw and

Continued on page A2

Middlesex County budget gets the OK

The Middlesex County Board of Chosen Freeholders has adopted a \$369 million budget that cuts the county's equalized property tax rate for a 14th year.

"As you will recall at the time the 2007 budget was approved, the estimated decrease in the equalized county property tax rate was (.8 cents) per \$100 of equalized assessed valuation," Freeholder Director David B. Crabel said at adoption March 29.

"The reduction in the equalized county property tax rate will now be one full cent per \$100 of equalized assessed valuation," he said.

Several changes were made to the proposed spending plan after the New Jersey Division of Local Government Services rejected an amendment to the Sayreville Economic and Redevelopment Agency's budget. The amendment would have allowed approval of an item of anticipated revenue in the proposed 2007 county budget.

The redevelopment agency was expected to make a payment of \$5,307,000 to the county, which loaned SERA \$37 million to purchase a 400-acre site for redevelopment. State officials did not believe the pay-

ment would be obtained by the county in 2007 based on the amended SERA budget.

"SERA has failed to convince the [state] in a timely manner that they will have sufficient funds to satisfy their contractual obligation to the county during the present calendar year," Crabel said.

"Should SERA actually be in a position to make the required contractual payment to the county during 2007," he said, "that payment will be credited to [miscellaneous revenues] and will serve to supplement county surplus in 2008."

Other amendments to the

2007 spending plan include a number of reductions in expenses and increases in anticipated revenue items. That action, Crabel said, reduced the amount the county would otherwise have had to raise as part of the property tax levy by \$2,022,000.

He said the county's retained surplus would increase, which would protect the county's AAA bond rating from Standard & Poor's and allows the county to continue to offer its property taxpayers the second lowest per capita cost of county government of any of New Jersey's 21 counties.

Future is focus of board meeting

SOMERVILLE — Tim Evans, research director of New Jersey Future, will be the guest speaker at the April 17 meeting of the Somerset County Planning Board.

The public is welcome. The meeting begins at 4:45 p.m. in the third-floor freeholders' meeting room of the Somerset County Administration Building at 20 Grove St. Free parking is available in the adjacent Bernie Field Parking Deck.

Evans will discuss how census data and other demographic information can be used to better understand planning trends and shape public dialog on issues ranging from property tax reform to housing and economic growth.

"Somerset County is already gearing up for the 2010 Census," said Freeholder Peter S. Palmer, Planning Board liaison. "Since Somerset County remains one of the fastest growing counties in the state, we need to continually analyze available demographic information to respond to public service and policy changes."

Evans directs "Future

Facts," an on-line newsletter, which is published twice monthly by New Jersey Future. The newsletter highlights emerging statewide smart growth trends and issues by taking a detailed look at census data and other demographic information.

He holds a Master's Degree in city and regional planning from the Bloustein School of Planning and Public Policy at Rutgers University. He also holds a master's degree in mathematics, with a concentration in statistics, from the University of Virginia.

New Jersey Future was founded in 1987 to achieve smart growth statewide. Its goal is to achieve growth that protects the state's open lands and natural resources, strengthens communities, makes it easier to get around and increases housing choices.

To learn, visit the New Jersey Future Web site at www.njfuture.org. For more information or directions to the April 17 meeting, contact the Somerset County Planning Board at (908) 231-7021 or e-mail planningbd@co.somerset.nj.us.



COURTESY SOMERSET VALLEY ORCHESTRA

Bound Brook area residents Don Kalbach, Joanna Volz, Patty Finn, Mike Polito, Gretchen Facq, Timothy Mann, Carol Avelsgaard, Karen Stober and Barbara Hastie, members of the Somerset Valley Orchestra, will take part in "A Day in the Life" being performed 3 p.m. April 15 in the Brook Arts Center, Bound Brook.

A day's worth of music sets mood

BOUND BROOK — On Sunday, April 15, the Somerset Valley Orchestra will present "A Day in the Life" at 3 p.m. in the Brook Arts Center.

The performance will include songs that cross the span of a day. The audience will accompany the orchestra from early morning (Bach's "Fantasy on Sleepers' Wake"), through the afternoon ("In a Persian Market" by A. Ketelby and Romberg's "The Student Prince"), into the evening (with Copland's "Saturday Night Waltz") and up to the nighttime's "Firework

Music."

Among other time-related songs, the audience will also hear "The Syncopated Clock," "Rock Around the Clock," and "The Best of Times is Now."

No day is complete without a little romance and composer Kenneth Schmidt will be premiering his "Romance for Piano, Strings and Woodwinds." Co-founder of the 1860 House Impromptu Cafe, arranger for the a cappella trio

Continued on page A2

Music

Continued from page A1

"The Tritones," and accordionist for the I. L. Peretz Klezmer band, Schmidt holds a Master's Degree in Music Theory from the University of Michigan. He will be playing the piano with the orchestra for this world premiere.

The Riverside Quartet are the featured guests and will perform its own selections, including a piece by Kenneth Schmidt. The quartet members are Beth Nardone, Margaret Daggett, Dave Fergesen, and Don Kalbach.

The orchestra is directed by Emily Bengels, a teacher in the Lebanon Township school

district, and a graduate of Bryn Mawr College and Rutgers Graduate School of Education. She is assisted by Don Kalbach, who led the orchestra for the past 21 years. Members of the orchestra come from Somerset, Middlesex and Hunterdon counties and range in age from their teens through their 90s.

Admission is \$10 for adults and \$8 for senior citizens. For more information, visit www.svorchestra.com or call (732) 356-2966.

Funding for "A Day in the Life" is provided in part by the New Jersey State Council on the Arts/Department of State through a grant administered by the Somerset County Cultural and Heritage Commission.

Fan Fest a fun time for Somerset Patriots

BRIDGEWATER — The Three-Time Atlantic League Champion Somerset Patriots have announced that Patriots Fan Fest will take place at Commerce Bank Ballpark on Saturday, April 14 from noon to 3 p.m.

Patriots Fan Fest is a free admission event and includes a chance for fans to meet and get autographs from Sparky Lyle and select Patriots players.

The first 500 kids in attendance will have the opportunity to receive a free Patriots T-shirt courtesy of the Ford Motor Company and a free backpack courtesy of PSE&G. Young fans will be able to participate in carnival games and activities.

Everyone in attendance will be able to vote to help name the Somerset Patriots new cat mascot that will be introduced during the 2007 season.

Artist

Continued from page A1

photograph exciting nature images. Essex Fells resident Suzanne Duff joined Lighthipe in France and is currently finishing up a painting of a pink hibiscus flower she discovered while there.

"France was wonderful," she said. "Besides the art opportunities, it has a wonderful atmosphere and the people on the trip really got along."

Duff also has a bachelor's of fine art, but has been studying with Lighthipe for more than a year.

"When I was in art school, it was all about expressing yourself and there was very little instruction," she said. "Mindy is the best. I wasn't very good at watercolor when I first started here, but I'm now actually surprising myself."

At age 42, Lighthipe feels lucky that she's always been able to make her living as an artist. But Lighthipe, also a member of the American Society of Botanical Artists, The Colored Pencil Society of America and The North American Butterfly Association, felt from a young age that nature and art would become her destiny.

"When I was a kid, I remember writing those

essays on what I wanted to be when I grew up," she said. "I always wanted to be an artist. I was not athletically inclined. I wasn't a great scholar, but I always did well in music and art."

But the path to becoming an artist wasn't encouraged by her high school guidance counselor.

"I didn't get a lot of support in the school system," recalled Lighthipe, who for ten years coordinated the New York Botanical Gardens Illustration Program. "My guidance counselor told me I wasn't college material. I think that's a truly awful thing to say, especially to someone who wants to go to college."

To encourage young adults who seek to make a career in the arts, Lighthipe took on her very first intern this year.

Kirsten Heteji, of Hampton, is a senior at Warren Hills Regional High School. Since the summer, Lighthipe has assisted Heteji with assembling a portfolio of her work and the two are planning to attend a portfolio day at Drexel University where representatives from colleges throughout the country meet with prospective students.

"My goal is to find out what colleges are looking for," Lighthipe said. "I'm giving her the guidance I never got."

In return, at least twice a



GEORGE PACCIOLLO/STAFF PHOTOGRAPHER

Kristen Heteji and Susan Duff work at Mindy Lighthipe's Studio 16 in Warren. Heteji, a senior at Warren Hills Regional High School, has applied to several colleges including the University of the Arts, Montclair State University and the Moore College of Art and Design. "I've always been interested in all sorts of art — arts and crafts, ceramic, graphic art," she said.

week, Heteji puts in time at the studio learning skills that will advance her status in the trade, organizing the supplies or assisting Lighthipe with other tasks.

"I've always been interested in all sorts of art — arts and crafts, ceramic, graphic art," said Heteji, who has applied to several colleges including the University of the Arts, Montclair State University and the Moore College of Art and Design. "I

didn't even know anything about watercolors before I worked with Mindy. If I never started this internship, I would have been really lost. She'll sit there and help me. She tells me when I need more paint on my brush or make suggestions."

For class schedules, programs and more information at Studio 16, call (908)769-7417 or visit www.bugsbeatsbotanicals.com.

In The Towns

Firefighter Mass is being held April 21

METUCHEN — The Most Rev. Paul G. Bootkoski, bishop of the Diocese of Metuchen, will be the principal celebrant at the diocese's 2007 Annual Firefighters Mass 7 p.m. on Saturday, April 21 at the St. Francis of Assisi Cathedral.

"Hardly a week goes by without the media reporting a fire and the heroic deeds of our firefighters. These courageous men and women put their lives on the line to protect us, our loved ones and our communities. We owe them a tremendous debt of gratitude," Bootkoski said.

"Our Mass is our way of thanking them for their unselfish service, and asking God to bless and protect them."

Professional, volunteer and retired firefighters, of all faiths, who live and work in the Diocese, comprised of Middlesex, Somerset, Hunterdon and Warren counties, have been invited to the Mass.

During the Liturgy those firefighters who gave their lives in the line of duty will be remembered. The Bishop said the tribute will be especially poignant because the Diocese lost two of its own during the past year: Firefighter Kevin

Apuzzio of the East Franklin Fire Department and Acting Lieutenant Thomas Van Liew of the New Brunswick Fire Department.

As in the past, bagpipers and color guards will participate in the Firefighters Mass. Prayer cards as well as commemorative pins will be distributed to the firefighters as a remembrance and a reminder that they are always in the prayers of the Diocese.

A reception will be held in the Cathedral Community Room following the Mass. For more information about the Firefighters Mass visit www.diometuchen.org or call (732) 562-2461.

Dunellen library offering programs

DUNELLEN — The Dunellen Public Library has these programs for the public: "Baby Buddies," 10:30 a.m. Wednesdays.

This play group is for children under age 3, accompanied by an adult. No registration is necessary.

"Imagination Station," 10:30 a.m. Thursdays. This story-time program is for children ages 3-5.

Registration is required for the program.

For registration where it is required, call (732) 968-4585 or visit the library on New Market Road.

Board of Health has scheduled meetings

HIGHLAND PARK — The Highland Park Board of Health meets at 7 p.m. select Thursdays in the lower level conference room at Borough Hall, 221 S. Fifth Ave.

Meetings are scheduled for May 10, June 14, July 12, Aug. 9, Sept. 6, Oct. 11, Nov. 8 and Dec. 13. For additional information, contact Karen Valente at (732) 777-6013.

Planning Board releases schedule

BOUND BROOK — The Bound Brook Planning Board meets at 7:30 p.m. on designated Thursdays in Borough Council chambers at the Municipal Building, 230 Hamilton St.

Meetings are scheduled for April 26; June 14 and 28; July 12 and 26; Aug. 9 and 23; Sept. 13 and 27; Oct. 11 and 25; Nov. 8; and Dec. 13. The reorganization meeting is scheduled for Jan. 10, 2008.

Volunteers needed for adult programs

EDISON — Volunteers are needed to work with older adults in adult day programs sponsored by the Jewish Family & Vocational Service of Middlesex County.

These programs meet three days a week at Temple Emanu-El on James Street. Programs cover arts and crafts, music, cultural activities, lectures, demonstrations, book reviews, dance and poetry. Volunteers are also

needed to help prepare and serve lunch.

If you are interested, e-mail ej.berman@jvsv.org or call (732) 777-1940, Ext. 122.

GED exams are offered in area

EDISON — The Community Learning Center at Roosevelt begins offering GED exams in January.

Testing is conducted over two days in each of five weeks. Those dates are April 24 and 26, May 22 and 24, June 19 and 21. Fee is \$25 and must be paid by money order.

Registration is required; call (732) 321-2201 between 1-3 and 6-8 p.m. on March 27, April 10, 17, May 1, 29 or June 5.

The Community Learning Center is located within the Roosevelt Care Center at 1 Roosevelt Drive, off Parsonage Road near Menlo Park Mall.

Five wine events coming to the area

The Frog and the Peach has scheduled wine events for the first half of 2007.

All are held in the restaurant at 29 Dennis St., New Brunswick. The final one is: Walk-around wine tasting, 7 p.m. Friday, June 8. Cost each night is \$69.

For reservations, visit www.frogandpeach.com or call (732) 846-3216.

New services in wellness, bodywork

BOUND BROOK — Enhanced Well-Being and

Bodywork offers wellness education and bodywork services for relieving stress and enhancing daily wellbeing.

The approach offers long-term and immediate aid with stress, according to Jan Collins, the proprietor. These services are given in the Bound Brook Chiropractic Center at 222 Hamilton St.

For full information, visit www.ewbb-wellness.com or call (732) 564-1120.

'Job Match' for no fee

The Professional Services Group has restarted its no-fee Job Match service.

This list is included with the monthly PSG e-mail newsletter. Over 1,200 area employers get a list of highly qualified management and professional talent.

For more information, e-mail f.j.white@hotmail.com or call (732) 331-6165.

The PSG is affiliated with the New Jersey Department of Labor and Workforce Development.

Literacy fliers in six languages

All Middlesex County Literacy Program Directory brochures are now available in six languages — English, Chinese, Gujarati, Russian, Spanish and Vietnamese.

Brochures provide information on classes in English as a Second Language, adult high school diploma, adult reading and math, computer literacy, GED preparation and testing sites, citizenship and civics. Another brochure covers the Community Learning Center at Roosevelt.

These brochures are available for distribution by community and religious organizations.

Call (732) 745-3970.

Adult education courses planned

METUCHEN — Congregation Neve Shalom is holding registration for its winter and spring adult education classes.

Cost for each course is \$25 for members and \$35 for non-members.

For more information, e-mail can2r11@aol.com or call Sheldon Levin at (732) 548-2238, Ext. 14.

FREE
3 day & two night hotel stay!

1-800-DONATE-CARS

Heritage for the Blind

- The donation is tax deductible.
- Pick-up is free.
- We take care of all the paperwork.

1-800-DONATE-CARS (1-800-366-2832)

Pelican's SPRING CLEANING!

UP TO 75% OFF

DISPLAY MODELS IN ALL DEPARTMENTS

PATIO SETS • POOLS
GAME ROOMS • WEBER GRILLS

Pelican Spa, Pool & Patio

"Worth The Trip!"

Mon-Fri 10-9 • Sat 9-6 • Sun 10-5
WHITEHOUSE • RT. 22 (908) 534-2534

Thank You!
For Voting Us*
"Best Oil Change"

***Readers' Choice**

BRIDGEWATER
1316 Route 22 East
908-231-9800

GREEN BROOK
195 Route 22 East
732-424-7300

DON'T REPLACE YOUR TUB... RESHAPE OR REGLAZE IT!

\$349

SAVE \$100

EASTERN REFINISHING CO. • 1-800-463-1879

Scrapbooking Show
April 13 - 14, 2007

Garden State Exhibit Center
Somerset, NJ • \$10 per day

★ Classes ★ Demos ★ Make-and-Takes
★ Prizes ★ Shopping ★ Fun

www.MemoriesScrapbookingExpo.com

DONATIONS NEEDED!

Boats, Cars, RVs, Equipment, Real Estate, Forklifts & Wheelchair Access Vans

IRS Forms and All Paperwork Done for You.
Associated Charities represents numerous non-profits in need of your property.

Call Toll Free: 866-639-8724 or 410-603-3468
E-mail: bob3416@mchsi.com

STOP PAYING HIGH PRICES!

20 Sets on display 100% Redwood Sets (No Red Cedar)

Swingsets at BIG DISCOUNTS
SHOP & COMPARE

- SLIDES
- SWINGS
- ADD ON'S
- GYM ACCESSORIES
- SET RE-STAINING
- SET MOVING

EVERYTHING FOR YOUR SWING

Wood Gym Outlet

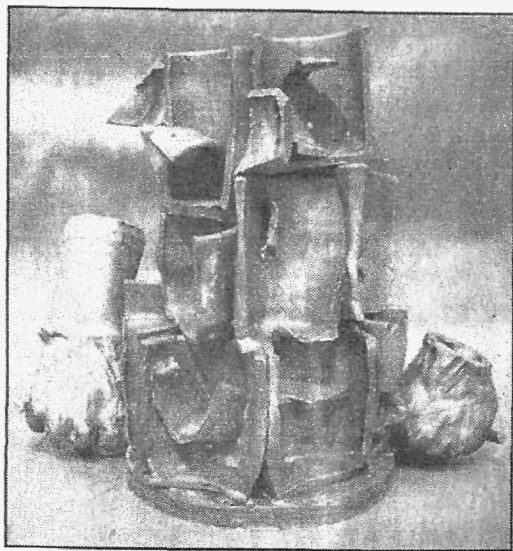
199 Rt. 22 East • (Between Warrenville & Washington Ave) • Green Brook • www.woodplay.com

The Chronicle

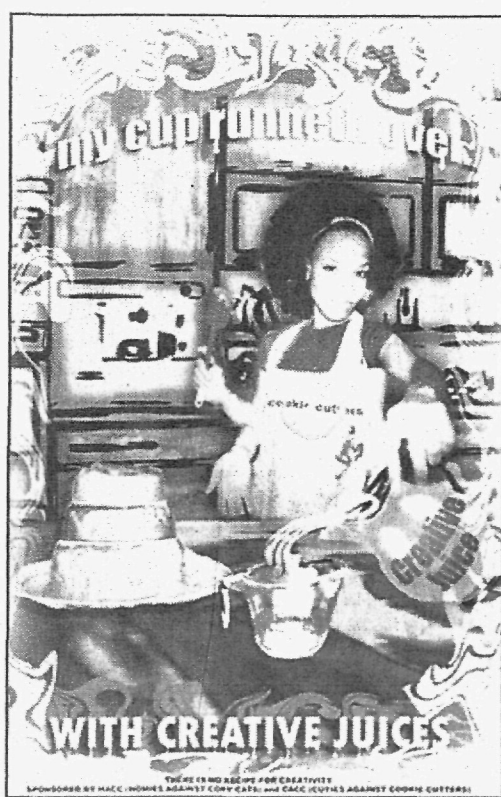
Since 1862

A Penn Jersey Advance, Inc. news/paper
NJN Publishing © 2003

The Chronicle (U.S.P.S. 061-800) ISSN 1047-3351 is published Saturday by NJN Publishing, 44 Veterans Memorial Drive East, Somerville, N.J. 08876. 908-575-6660. Periodicals postage paid at Somerville and additional mailing offices. POSTMASTER: Send address changes to NJN Publishing, Fulfillment Office, P.O. Box 699 Somerville, NJ 08876. Subscription rates per year: \$28 in Somerset & Middlesex County; \$33 in NJ; \$36 out of state. To subscribe call 1-800-300-9321.



COURTESY RARITAN VALLEY COMMUNITY COLLEGE
Constantin Zingerman's "Untitled," Ceramic, Class of Spring 2007, is pictured above while Aja Washington's "Originality/Copyright Poster," Digital, Class of Fall 2007, is seen at right. Both will be on display at the Student Art Exhibition being held by Raritan Valley Community College's Visual and Performing Arts Department.



Campus Notes

Thirteen Middlesex County College students were awarded \$1500 scholarships in a ceremony in March. The awards, called Thomas Edison Scholarships, are sponsored by the National Science Foundation.

"This is a great opportunity for our students," said Frank Burke, chair of the Computer Science and Information Technology Department. "They have demonstrated academic excellence and have worked very hard. They can use this money for tuition, fees and books."

As part of the ceremony, students also heard from James Lipuma, professor and director of education programs at the New Jersey Institute of Technology, who spoke about the teacher education programs there, as well as about the TECHS-NJ—Robert Noyce Scholarship Program. This is a program, sponsored by the National Science Foundation, which grants a \$9600 stipend each year for two years at NJIT or Rutgers Newark to students who major in math or science and complete the teacher

certification program. They commit to teaching for four years in a high-need school. Successful students are guaranteed employment in the Newark school system. They also receive a \$500 "toolbox" of supplies selected by the scholars as they start their teaching career.

"There is a critical need for qualified math and science teachers in our public schools," Dr. Lipuma said. "This program helps high-need school systems, while at the same time assists students in paying for their education. It is a great program and we want these excellent students to be aware of it."

Erin Sullivan of Middlesex was honored March 15 at the freshman achievement awards luncheon of Saint Peter's College, Jersey City. She was among those freshman who achieved a grade point average of 3.5 or higher.

Amanda Leigh Smith of Runyon Avenue, Middlesex, was named to the dean's list for the fall 2006 semester at Cook College of Rutgers University, New Brunswick. She is majoring in environ-

mental policy, institutions and behavior.

The daughter of Carol Struck-Smith plans to earn a teaching certificate in environmental science.

Five students from Piscataway were named to the dean's list for the fall 2006 semester at the University of the Sciences in Philadelphia. Milind Amin and Sneha Patel are studying for doctor of pharmacy degrees. Ratnesh Kaur is majoring in pharmaceutical sciences. Swataben Patel is majoring in pharmaceutical marketing and management. Joelle Saliba is majoring in biochemistry.

Alison Reeve of Piscataway was named to the dean's list for the fall 2006 semester at the University of Vermont, Burlington, Vt. She is a freshman majoring in environmental science.

Stephanie Borden of Dunellen was named to the dean's list for the fall 2006 semester at Saint Leo University, Saint Leo, Fla. She is a freshman majoring in liberal arts.

In The Towns

4-H announces its camp open house

On Sunday, May 20 the Lindley G. Cook 4-H Summer Camp will host an Open House from 2:30-5 p.m.. Interested families are invited to come meet our staff, tour the camp and participate in camp activities. 4-H Camp is an overnight camp located in Stokes State Forest, managed by the Rutgers Cooperative Extension's 4-H Youth Development Program. Camp is open to youth who have completed grades 3 through 10.

4-H member and non-members alike are invited to come spend a week in the summer with us. The cost for the week covers all food and activities. All sessions begin on Monday morning and end on the following Saturday morning. Camp runs for six consecutive weeks from the first week of July through the middle of August.

4-H Camp offers challenging and exciting programs, tailored to the campers individual interests and guided by experienced staff at all times.

Activities include: Swimming, Boating, Arts & Crafts, Hiking, Camping, Nature and Ecology, Drama, Rifle, Archery and much, much more! For our older teens we have exciting opportunities including Advanced Archery, Kayaking, Muzzle Loader and our leadership based Counselor in Training program.

For more information or directions to the camp please contact the 4-H Camp Office at: (973) 948-3550, fax (973) 948-0735, e-mail 4hcamp@rcr.rutgers.edu or visit www.nj4hcamp.rutgers.edu.

4-H offers educational programs to all youth, grades K-13, on an age-appropriate basis, without regard to race, religion, color, national origin, gender, sexual orientation, or disability.

Dunellen fire co. seeking donations

DUNELLEN — The Dunellen Defender Fire Company Number One is always a phone call away. Twenty-four hours a day and 365 days a

year, volunteer fire company members are on call, protecting Dunellen residents, as well as providing mutual aid to neighboring fire companies in extreme emergencies.

Each year, the Dunellen Fire Company asks Dunellen residents, as well as local businesses for donations, monetary and otherwise, to keep this free and necessary service going. The 2006-7 Annual Fund Drive is currently going on.

All donations are used to fund operational expenses for the firehouse, located at 231 Madison Avenue in the town, as well as a \$500 college scholarship for a Dunellen High School resident. Previous annual campaigns have funded upgrades to the building, a new blacktop parking lot, allowing easier access for fire trucks, and a new furnace.

"The Dunellen Fire Company relies on the support of local residents and businesses as much as they rely on us for emergency response," said Ben Garnecki, president of the Dunellen Fire Company. "We are committed to providing unsurpassed service to our community and sincerely thank the residents and business owners for their support of the Dunellen Fire Company."

Donations may be mailed to the firehouse at 231 Madison Avenue, Dunellen, NJ 08812. For more information on the fire company, or to join this prestigious organization, call the firehouse at (732) 968-5653.

Founded in 1896, the Dunellen Fire Department is a volunteer organization of over 35 highly trained members that serves Dunellen, New Jersey. The Dunellen Fire Department provides residents of the town fire prevention education, safety programs, and emergency response to fire and other hazardous situations. For more information, or to register to be a volunteer, visit www.dunellenfd.com.

Spring awakens at Piscataway concert

PISCATAWAY — Cantabile Chamber Choral Concert "Spring Awakening: Turn the World Around," Saturday, April 28, at 7:30 p.m. at Christ

United Methodist Church, 145 Hoes Lane.

The Cantabile Chamber Choral will feature the Cantabile Youth singers and present an evening of classical and jazz compositions, connecting the idea of the awakening and the renewal of spring to the desire to live in peace and fellowship in the world.

Cantabile will perform the songs of Bernstein, Ellington, Gershwin, Shearing, and others. Ticket prices: \$18 adults; \$15 seniors and students. For more information, visit www.cantabilechamberchorale.org or call (732) 560-7132, Ext. 2.

County College hosts workshop

NEW BRUNSWICK — A one-evening workshop on real estate will be held at the Middlesex County College New Brunswick Center on Wednesday, April 25 at 6 p.m.

It is free and open to the public. The New Brunswick Center is located at 140 New Street, which is at the intersection of New Street and Joyce Kilmer Avenue.

The program, "Real Estate: The Best Practices When Buying or Selling a Home," is the fourth in a series of six programs on personal finance designed to assist people in making sound financial decisions.

The workshop leader is Wayne Sellers, real estate agent for Re/Max Pros in Piscataway.

Marla Brinson, director of the New Brunswick Center, urged people to attend.

"Buying a home is a big decision. And how you go about it can save you thousands of dollars," she said. "This workshop will teach you how to approach it the right way. We have two more workshops coming up this spring and they can really help people begin to take charge of their financial situation and become more financially savvy."

Future workshops include Mortgages and Buying a Car.

Space is limited; reserve your seat by calling (732) 745-8866 by Friday, April 20. Light refreshments will be served.

FREE DIVORCE SEMINAR

Divorce, Custody & Equitable Distribution

Tuesday, April 17 7:00pm - 9:00pm

Free
Registration!

Budd Lerner, PC
150 John F. Kennedy Parkway
Short Hills, NJ

RSVP: 973.379.4800 or
info@budd-lerner.com

www.buddlerner.com

WATCH YOUR
BUSINESS

Place your 25-word
classified ad in 135+
newspapers with
combined circulation of 2.2
million+ for only
\$415

Contact this newspaper or Diane Trent
New Jersey Press Association
(609) 406-0600 x24
dtrent@njpa.org

1466795

GROW!

New Jersey Statewide Classified Advertising Network

SPRING CLEARANCE

THE MATTRESS FACTORY

www.mattressfac.com

MATTRESSES & BOX SPRINGS MADE ON THE PREMISES

Open To The Public

IRON BEDS

FANWOOD
35 South Avenue
Factory Showroom
908-322-4178

LATEX MATTRESSES

E. HANOVER
319 RT. 10 East
Warehouse/Showroom
Past McDonald's
Toll Free 877-MATT-FAC
Closed Sun & Mon

Open Mon-Fri 10-6 • Thurs 10-8 • Sat 10-5 • Sun 12-5 Fanwood Only

GARY M. PRICE

CERTIFIED BY THE SUPREME COURT
OF NEW JERSEY AS A CIVIL TRIAL ATTORNEY

- Personal Injury
- Work Place Injuries
- Slips, Falls, Accidents
- Workman's Comp

- Employment Disputes
- Real Estate
- Closing, Refinances
- Initial Consultation Free

BUTTAUFUOCO, ARCE & PRICE, L.L.C.
(908) 668-8829
2509 Park Avenue, South Plainfield

ROOFING

Cape Cod	\$2,500
Bi-Level	\$2,700
Split Level	\$2,900

www.carlsonbrothers.com

CARLSON BROS. 908-272-1266

Auditions

SCHOOL OF THE PERFORMING ARTS

MIDDLESEX COUNTY
VOCATIONAL & TECHNICAL
HIGH SCHOOL

Holds its annual audition for exceptional dance and theatre students. The audition takes place from 6:00-8:00 p.m. on Wednesday, April 18, 2007 and Monday June 11, 2007. The audition begins in the auditorium. *Dancers should dress appropriately.

Middlesex County Vocational and Technical High School
112 Rues Lane East Brunswick, NJ 08816
(Behind Brunswick Square Mall)

Call guidance counselor Susan
Cipperly at 732-254-8700 to register.

Y

Every Day Is An Adventure at Camp Lenape!

485 Hoes Lane, Piscataway, NJ, 08854

OPEN HOUSE

April 21, 2007
12:30-3pm
Register Today!

Full day camp for children grades K-10
Traditional & Specialty Camp • Weekly Day Camp

Camp Hours: 8:30am-4:30pm
Extended Hours: 7:30-8:30
+ 4:30-6:00pm

Register online today at
www.metuchen-edisonymca.org
or call 732-548-2044 ext 210 for more information

In The Towns

Middlesex County plans drop-off days

The Middlesex County Division of Solid Waste Management has announced Household Hazardous Waste Drop-Off Days for the spring.

They are Saturday, April 21 at the county Division of Highways off Route 130, North Brunswick; Sunday, May 20 at Middlesex County College in Edison; and Saturday, June 16 at the county Division of Highways on Jernee Mill Road, Sayreville. Hours each day are 8 a.m.-2 p.m.

The June 16 drop-off was rescheduled from March 17 due to an ice storm.

Pesticides, herbicides, flammable liquids, solvents, swimming pool chemicals, oil filters, used motor oil, paint, car

batteries, household batteries, antifreeze, propane tanks and fluorescent light bulbs are accepted.

All items must be brought in clearly marked containers. Asbestos can be brought in with advance registration.

Tires, electronics, explosives, munitions, infectious waste and broken light bulbs are not accepted.

For more information, e-mail solidwaste@co.middlesex.nj.us or call (732) 745-4170.

College will discuss global warming

EDISON — Middlesex County College holds two programs centered around "Global Warming: Myth or Reality?"

Both programs are on the college's main campus, which

is located at 2600 Woodbridge Ave.

Kenneth Miller speaks about "The Impact of Global Warming in New Jersey" in L'Hommedieu Hall at 2 p.m. Thursday, April 19.

He is chairman of the Geological Sciences Department at Rutgers University.

A panel on global warming is in the Performing Arts Center at 10 a.m. Friday, April 20. Panelists are John Cusack, executive director of the New Jersey Higher Education Partnership for Sustainability; Reginald Luke, dean of science, mathematics and health technologies at MCC; and Tina Weishaus, a member of the Al Gore Institute.

The public is invited to both programs.

Faces of Success theme of annual ball

EDISON — "The Faces of Success" is the theme for the 38th annual Scholarship Ball of the Middlesex County College Foundation.

This fundraising event is at 6 p.m. Saturday, April 28 at The Heldrich hotel, 10 Livingston Ave., New Brunswick. Proceeds go toward scholarships for students at the county college.

A cocktail hour and silent auction are part of the ball. Music is by Mirage.

Individual tickets are corporate tables are available; contact Sally D'Aloisio at (732) 906-2564.

Spring rummage sale planned in borough

BOUND BROOK — The Women's Fellowship Group of the Congregational Church, 209 Church St., holds a spring rummage sale this month.

Sale hours are 7-9 p.m. Thursday, April 19; 9 a.m.-2 p.m. Friday, April 20; and 9 a.m.-noon Saturday, April 21.

Used clothing in good condition for men, women and children will be available. Bric-a-brac, dinnerware, toys

and household goods are also offered. Prices are reduced for the "Fill a Bag" special April 21.

For more information, call (732) 356-1293.

'Aladdin Jr.' comes to Middlesex stage

MIDDLESEX — Students from Von E. Mauger Middle School perform "Aladdin Jr." in the auditorium at Middlesex High School, off Bound Brook Road.

Showtimes are 7 p.m. Thursday through Saturday, May 3-5. Admission is \$5 for adults, \$3 for seniors and students. For more information, call Lori at (732) 563-4255.

Golf outing benefits Watchung School

MIDDLESEX — The Watchung School PTO holds its second annual golf outing at noon Monday, May 7 at the Beaver Brook Country Club in Annandale.

Cost is \$130 per golfer. For registration, call Carmen Santucci at (732) 752-8008 by Wednesday, April 25.

Annual fishing derby returning to Edison

EDISON — The township's 25th annual fishing derby is on Saturday, May 5 at Lake

Papaanni in Central Avenue Park.

A "Kids Only" derby runs from 8-9 a.m. with the main event following until 4 p.m. Rain date is Sunday, May 6.

The lake will be stocked with trout. Prizes will be awarded in both derbies to the person who catches the first fish and those who catch specially tagged fish.

Fee is \$5; seniors age 65-up with a valid township ID card are free. All participants between ages 16-70 must have a current fishing license and trout stamp.

Entry forms are available at township community centers, the Municipal Complex, all branches of the Edison Free Public Library and the township website (www.edisonnj.org).

Questions can be referred to the Recreation Department at (732) 248-7313.

Rutgers Gardens holds flower sale

NEW BRUNSWICK — The Rutgers Gardens, New Brunswick, hold their Spring Flower Fair over Mother's Day weekend.

Flower Fair hours are 9:30 a.m.-4 p.m. Saturday and Sunday, May 12-13, rain or shine. Rare plants, choice perennials, annuals, heirloom vegetable plants and bamboo are among the items offered. Bring a garden cart to take your purchases home.

As part of the Flower Fair a gift shop will open for the first time to present what is new in the Rutgers Gardens. Food and children's activities are also offered.

Admission is by a donation for parking. For more information, visit rutgersgardens.rutgers.edu or call (732) 932-8451.

The Rutgers Gardens are on the Cook College campus at 112 Ryders Lane, just off Route 1.

Neve Shalom hosting breakfast with rabbi

METUCHEN — The Sisterhood and Men's Club of Congregation Neve Shalom sponsor "Breakfast with the Rabbi" the weekend after Mother's Day.

This breakfast is at 10 a.m. Sunday, May 20 in the synagogue at 250 Grove Ave. Military veterans will be on hand to talk about their lives as Jewish soldiers.

A collection for Operation Shoebox also will be taken.

Edison Library hosts organization lessons

EDISON — Eva Abreu gives two free workshops on "Decluttering and Organizing" at the Main Branch of the Edison Free Public Library, 340 Plainfield Ave.

"Where Do I Start?" is the first workshop at 2 p.m. Saturday, May 12. "Piles of Paper" are handled in the second workshop at 2 p.m. Saturday, May 26.

Sign up at the circulation desk or by calling (732) 287-2298, option 1. Space is limited.

Arts society plans sixth annual exhibit

EDISON — The Edison Arts Society sponsors its sixth annual "Gardens of the Garden State" art and photography exhibit in Menlo Park Mall.

The show can be seen on the lower level in the Nordstrom wing from 2-9 p.m. Friday, April 27; 11 a.m.-8 p.m. Saturday, April 28; and noon-5 p.m. Sunday, April 29.

This year's exhibit features 57 artists and 35 photographs. Among the artists are Joan Katen of Colonia; Nancy Dunn, Emilia Misura and Allie Skislak, all of East Brunswick; Rita Brown and Robyn Trimboli, both of Metuchen; Bill Giacalone of Highland Park; Grace Chiarella and Rae O'Shea, both of Kendall Park; Charlotte DiMarsico and Elinor Winstanley, both of Avenel; Carol Funk of New Brunswick; Lois Nagy-Hartnack of Fords; Jean Literate of Iselin; Loretta Brewer, Tonette Campbell, Harriet Charatan, Allison Datch, Beverly Frey, Kimberly Frey, Laura Grozovsky, Tom Martin, Mary Nelsen, Mary Pazdan, Thelma Portnoff, Sherri Orenberg-Ruggieri, Christiane Silla, Ray Skibinski, Barbara Sturm and Judy Yamamoto, all of Edison.



We're the bank that's big on your business

	Investors Savings Bank	PNC Bank	Wachovia	Bank of America
Monthly Maintenance Fee	No	No	Minimum Balance Required	Minimum Balance Required
Free Transactions	500	200	150	200
Free Cash Deposits	Unlimited	up to \$5,000	up to \$5,000	up to \$5,000

Investors Business Banking. It all adds up to good business and dedicated personalized service. Come talk to us today.

INVESTORS SAVINGS BANK

800.252.8119 | isbnj.com | 46 convenient locations

Comparisons based on independent shopping survey of other institutions' services. Other conditions and/or restrictions may apply. Member FDIC

New Today

Find your next job in the classifieds or online at NJ.com

Employment

Education 201

JOB COACH PT

Midland Adult Services, Inc., a nationally recognized school/work program associated with the Midland School in North Branch, NJ (Somerset County), is seeking a part-time Job Coach/Aide to train young adults with learning disabilities in-house as well as out in the work force. High school diploma required. Call: 908-722-7272 EOE A/A

PRESCHOOL TEACHERS & AIDES

Private preschool & kindergarten in Somerset is looking for certified, experienced, creative teachers for September 2007. Competitive salary & benefits. e-mail resume to: brown@thecrestwoodschool.com

Child Care 202

ASSISTANT TEACHERS

PT & FT All Age groups, Child Care exp. necessary. Great Pay & Exc. Bnfts. Call: 908-231-8800

Employment Agencies 205

Immediate Job Openings! STAFFING ALTERNATIVES Call 732-246-1687

Drivers 230

DRIVERS

FT, Mon-Fri, Whitehouse based Messenger & Delivery Service offering competitive wages & benefits. Reliable, safe, driver able to pass DOT physical. Call 1-800-527-0696

Drivers 230

Chauffeurs Needed

For busy Hunterdon Co. based limousine service. FT & PT opportunities. CDL a definite plus. Call for interview appointment. 908-735-8865

SCHOOL BUS DRIVERS

Athletics/Field trips/Routes. For Hillsborough/Flemington areas. CDL BPS preferred. \$17 per hour. Call Hager Bus: 908-788-9755

Tandem Truck Driver

Mack dump, Somerset area. Exp. nec. Clean DL. 908-507-9677

General Help 240

\$700-\$900,000++ **2007** FREE CASH GRANTS! NEVER REPAY! Personal/Medical Bills, School, Business, AS SEEN ON T.V. Live Operators! Call Now! 1-800-592-0366 Ext. 225

CHILD CARE

Work in your own home. Apply at Monday Morning Inc 908/526-4884

COUNTER HELP

Friendly, outgoing individuals to work over the counter in new Clinton deli, no experience necessary will train the right people. FT/PT flexible hours. Call Rich 908-797-5197

FENCE

Installers, Laborers, Subcontractors. Sales 1-800-262-3245

LIFEGUARD

FT/PT good pay, Bridgewater & Edison. 201-832-7376

General Help 240

FREE CASH GRANTS! \$700-\$900,000++ **2007** NEVER REPAY! Personal/Medical Bills, School, Business, Housing, \$49 billion unclaimed 2006! Live Operators! CALL NOW! 1-800-592-0366 Ext. 224

HELP WANTED

Earn Extra Income assembling CD cases from Home Working with Top US companies. Start Immediately. No experience necessary. 1-800-405-7619 Ext 104 www.easywork-greatpay.com

LANDSCAPE INDIVIDUAL

Knowledge of machinery, installing walls, patios, grading and drainage, plants & walkways. Min. 3 yrs. exp. DL req'd. CDL pref'd. Pay based on exp. Call Ed 908-413-0574.

MANICURIST

Salon Village of West field seeking FT manicurist. 908-233-2726

OFFICE MANAGER

Established company. Quickbooks. Benefits. 908-510-9543

Residential Assistant

PT/Working with women in early sobriety/recovery. Residential setting. Job includes driving, must have valid DL. N/S environment. Women encouraged to apply. Please call 908-534-5818 or mail resume to Executive Director PO Box 135 Whitehouse Station, NJ 08889 Fax 908-534-8871

General Help 240

RESTAURANT

Panther Valley Golf & Country Club, seeking energetic candidates for employment. Degree preferred for Teacher position. Servers, Bartenders, snack stand attendants, dishwashers. Please call 908-850-0800

Retail Administrative Assistant

Hunterdon, Somerville and Warren Divisions. This multi task position requires a very organized, deadline driven individual who has proficient working knowledge of WORD and EXCEL, knowledge of data base programs and File Maker necessary. The position is based out of Flemington NJ and requires use of own car and valid drivers license. Employees interested in additional details and/or making a formal application should e-mail at jobs@njnpublishing.com

SECRET SHOPPERS NEEDED IMMEDIATELY

For Store Evaluations. Local Stores, Restaurants, & Theaters. Training Provided. Flexible Hours. Up to \$50 per assignment!! 1-800-585-9024 ext. 6262

STABLE HELP

Needed for large Glen Gardner horse farm. FT-PT openings Call: 908-638-8195

SUMMER EMPLOYMENT

Hunterdon County Day Camp *Camp Nurse/EMT *Sports & Pool Staff 908-735-9336 winneday@ptd.net

General Help 240

Teacher & Teacher Assistant

For accredited pre school in Branchburg. Degree preferred for Teacher position. Benefits include discounted child care. 908-231-7800

Medical Help 250

DENTAL ASSISTANT

FT, efficient, organized person for 2 of five practice. X-ray lic. req'd. CDA or RDA pref'd. Branchburg area. Benefits. Please email resume: dental.op.202@yaho.com

X-RAY TECHNICIAN

For orthopedic practice, Summit, NJ. Email resume to: Medicaloffice33@aol.com

Sales Help 265

SUMMER HELP

Swimming Pool. Spa dealer has Seasonal & FT positions avail. Will train. \$10-\$12/Hr. Call Ryan: 908-534-9209

Employment Trades 275

MECHANIC

Needed for power equipment store, for repairing all types of power equipment. Mowers, lawn tractors, ATV, etc. Exp. necessary, excellent pay & benefits. Call Walt's Outdoor Center 908-782-5554

Situations Wanted 280

Polish Referral Svc Inc. providing live-in-out housekeeper for elderly. Licensed & Bonded 908-689-9140

BATHTUB REGLAZING

SAVE IT • REGLAZE IT

MAKE YOUR BATHTUB LIKE BRAND NEW LIMITED TIME

www.advancedrefinishingcorp.com

CALL TODAY • BEAUTIFUL TOMORROW ADVANCED REFINISHING CORP.

877-3 NEW TUB • 201-288-0073 • 732-988-6005 • 973-279-0083

Your shopping place for Home Decor & More!!!

COUNTRY FOLK ART CRAFT SHOW

APRIL 20-21-22

Edison NJ Convention & Expo Center

Please call 732-417-1400 for driving directions

Show Hours: Friday 3 to 9 Saturday 10 to 5 Sunday 10 to 4

Adm. \$7 FREE PARKING! YOUR HANDSTAMP RE-ADmits YOU ALL 3 DAYS!

Country Folk Art Shows, Inc. 15045 Dixie Hwy., Holly, MI 48442 Ph: (248) 634-4151 email: info@countryfolkart.com

CountryFolkArt.com • CountryFolkArt.com • CountryFolkArt.com

COZY QUILTS • GOURMET FOODS • WEARABLE ART • HANDCRAFTED FURNITURE

• HANDMADE SOARS & CANDLES • FABULOUS FLOWERS • HOME & GARDEN DECOR

150+ Top Artisan-Exhibitors from across the country!

Country Folk Art Shows, Inc. 15045 Dixie Hwy., Holly, MI 48442 Ph: (248) 634-4151 email: info@countryfolkart.com

CountryFolkArt.com • CountryFolkArt.com • CountryFolkArt.com

COZY QUILTS • GOURMET FOODS • WEARABLE ART • HANDCRAFTED FURNITURE

150+ Top Artisan-Exhibitors from across the country!

Country Folk Art Shows, Inc. 15045 Dixie Hwy., Holly, MI 48442 Ph: (248) 634-4151 email: info@countryfolkart.com

CountryFolkArt.com • CountryFolkArt.com • CountryFolkArt.com

COZY QUILTS • GOURMET FOODS • WEARABLE ART • HANDCRAFTED FURNITURE

150+ Top Artisan-Exhibitors from across the country!

Country Folk Art Shows, Inc. 15045 Dixie Hwy., Holly, MI 48442 Ph: (248) 634-4151 email: info@countryfolkart.com

CountryFolkArt.com • CountryFolkArt.com • CountryFolkArt.com

COZY QUILTS • GOURMET FOODS • WEARABLE ART • HANDCRAFTED FURNITURE

150+ Top Artisan-Exhibitors from across the country!

Country Folk Art Shows, Inc. 15045 Dixie Hwy., Holly, MI 48442 Ph: (248) 634-4151 email: info@countryfolkart.com

CountryFolkArt.com • CountryFolkArt.com • CountryFolkArt.com

COZY QUILTS • GOURMET FOODS • WEARABLE ART • HANDCRAFTED FURNITURE

150+ Top Artisan-Exhibitors from across the country!

Country Folk Art Shows, Inc. 15045 Dixie Hwy., Holly, MI 48442 Ph: (248) 634-4151 email: info@countryfolkart.com

CountryFolkArt.com • CountryFolkArt.com • CountryFolkArt.com

COZY QUILTS • GOURMET FOODS • WEARABLE ART • HANDCRAFTED FURNITURE

150+ Top Artisan-Exhibitors from across the country!

Country Folk Art Shows, Inc. 15045 Dixie Hwy., Holly, MI 48442 Ph: (248) 634-4151 email: info@countryfolkart.com

CountryFolkArt.com • CountryFolkArt.com • CountryFolkArt.com

COZY QUILTS • GOURMET FOODS • WEARABLE ART • HANDCRAFTED FURNITURE

150+ Top Artisan-Exhibitors from across the country!

Country Folk Art Shows, Inc. 15045 Dixie Hwy., Holly, MI 48442 Ph: (248) 634-4151 email: info@countryfolkart.com

CountryFolkArt.com • CountryFolkArt.com • CountryFolkArt.com

COZY QUILTS • GOURMET FOODS • WEARABLE ART • HANDCRAFTED FURNITURE

150+ Top Artisan-Exhibitors from across the country!

Country Folk Art Shows, Inc. 15045 Dixie Hwy., Holly, MI 48442 Ph: (248) 634-4151 email: info@countryfolkart.com

CountryFolkArt.com • CountryFolkArt.com • CountryFolkArt.com

COZY QUILTS • GOURMET FOODS • WEARABLE ART • HANDCRAFTED FURNITURE

150+ Top Artisan-Exhibitors from across the country!

Country Folk Art Shows, Inc. 15045 Dixie Hwy., Holly, MI 48442 Ph: (248) 634-4151 email: info@countryfolkart.com

CountryFolkArt.com • CountryFolkArt.com • CountryFolkArt.com

COZY QUILTS • GOURMET FOODS • WEARABLE ART • HANDCRAFTED FURNITURE

150+ Top Artisan-Exhibitors from across the country!

Country Folk Art Shows, Inc. 15045 Dixie Hwy., Holly, MI 48442 Ph: (248) 634-4151 email: info@countryfolkart.com

CountryFolkArt.com • CountryFolkArt.com • CountryFolkArt.com

COZY QUILTS • GOURMET FOODS • WEARABLE ART • HANDCRAFTED FURNITURE

150+ Top Artisan-Exhibitors from across the country!

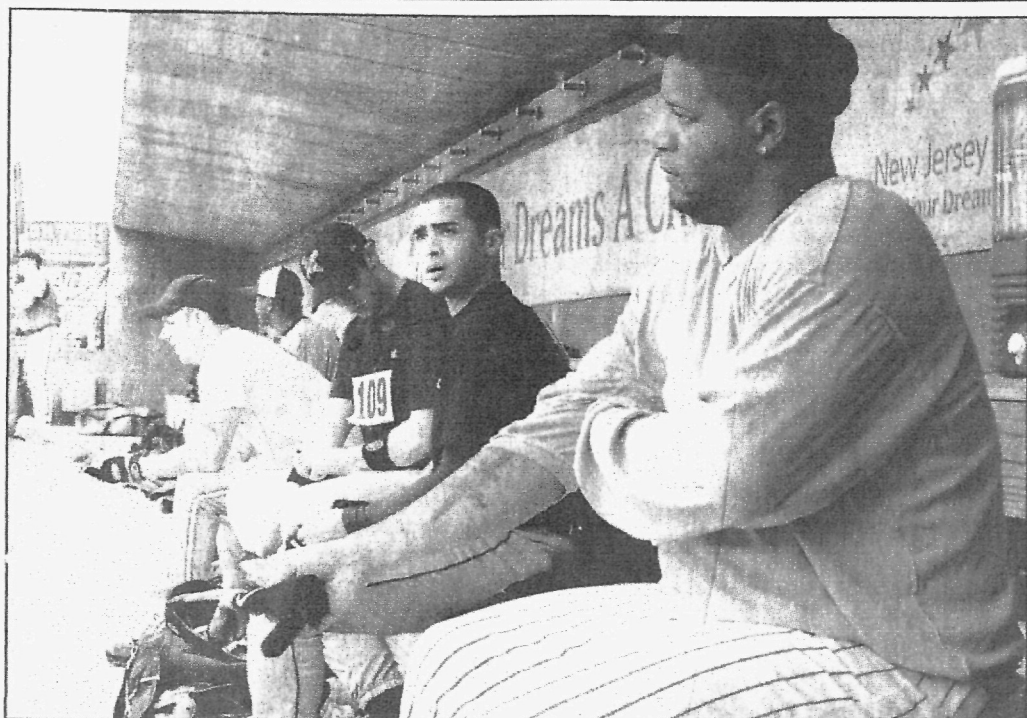
Country Folk Art Shows, Inc. 15045 Dixie Hwy., Holly, MI 48442 Ph: (248) 634-4151 email: info@countryfolkart.com

CountryFolkArt.com • CountryFolkArt.com • CountryFolkArt.com

COZY QUILTS • GOURMET FOODS • WEARABLE ART • HANDCRAFTED FURNITURE

150+ Top Artisan-Exhibitors from across the country!

Sports



PHOTOS BY LARRY MURPHY/SPECIAL TO THE REPORTER
Somerset Patriots hopefuls wait for their turn at bat at open tryouts, held at Commerce Bank Park in Bridgewater on March 31.

Patriots begin filling roster

BRIDGEWATER — The Somerset Patriots have announced the signing of several players in the past two weeks.

The announcements come just as the team prepares to head to Florida for spring training.

Among the signings are former Major League left-handed pitchers Phil Norton and Josh Stewart, the re-signing of left-handed pitcher Andy Van Hekken, the signing of utility player Pat Boran, the signing of left-handed pitcher Brian Adams and catcher Brian Peterson.

Norton has Major League experience with the Chicago Cubs and Cincinnati Reds. He had a 5.07 ERA in 92.1 innings and struck out 61 in 92 Major League games.

Stewart has Major League experience with the Chicago White Sox, where he pitched in eight games over parts of two seasons.

Stewart started seven of his eight games in the Major Leagues.

"We are very excited about adding both Phil and Josh to our pitching staff. It's always a big plus to have pitchers with Major League experience on the roster. If you look at our history, the years that we've been successful are the ones that we have former Major Leaguers leading the way," said Patrick McVerry, president/general manager of the Somerset Patriots Baseball Club.

Van Hekken has Major League experience with the Detroit Tigers, where he had a

3.00 ERA in five games played.

Boran finished the 2006 season with 45 runs, 81 hits, 18 doubles, three home runs, and 23 RBI in 100 games played for the Patriots.

Adams has experience in the Boston Red Sox and Milwaukee Brewers organizations, including four seasons at the Double-A level.

Adams spent the 2006 season with Fargo-Moorhead of the independent Northern League.

He was 2-1 with a 2.94 ERA, ten saves, and 26 strikeouts in 33.2 innings pitched in 33 games.

He has a minor league career record of 23-20 with a 3.22 ERA, 30 saves, and 326 strikeouts in 447 innings in 246 games pitched.

Senior Citizens Calendar

Bound Brook

THE BOUND BROOK SENIORS meet at 7 p.m. the first Wednesday of each month in Asbury Hall of the Bound Brook United Methodist Church, 150 W. Union Ave. and the corner of Livingston. All seniors are welcome to join including non-residents. Meetings include informative programs, refreshments, information about upcoming trips and bingo.

Upcoming Trips and Events:

Atlantic City trips are held the third Tuesday of each month. Call Ed Kimmel at (732) 469-1263 for details.

For more information about the planned trips, call Frank at (732) 356-6310.

For detailed information about the club, call President Frank Gilly at (732) 356-6310. Non-members are welcome on trips if space allows.

THE SENIOR LEISURE CLUB OF ST. MARY'S Bound Brook club sponsors Atlantic City trips to the Taj Mahal casino the fourth Tuesday of each month.

The bus departs from the church parking lot at 10:15 a.m.

The Senior Leisure Club of St. Mary's meets at 1 p.m. the second Monday of every month in the cafeteria of Holy Family Academy, 201

Vosseller Ave., Bound Brook. For further information, call President Sal Barbati at (908) 725-5444.

Dunellen

THE DUNELLEN SENIOR CITIZEN CLUB is open to all Dunellen residents 60 years and older. Meetings are held at 10 a.m. each Friday at the new seniors building on Orange Street in Columbia Park. Bingo is played each Friday after the meeting. Bus transportation is provided. New members are welcome. Coffee and tea are provided; bring your own sandwiches.

For information, call (732) 968-1285; President of Dunellen Senior Citizen Club, Ida Chianowyz.

Edison

Edison Chapter of AARP #3346 meets the third Monday of the month at 1 p.m. at the Edison Job Corps center, located at 500 Plainfield Ave. New applications are being accepted.

Jewish Family and Vocational Services — The volunteer program at Elderday, "Chef for the Day" needs volunteers to prepare lunch for the elderly members of the social adult day program in Edison from 11 a.m. to 1 p.m. For more information, call E.J. Berman at (732) 777-1940, Ext. 122.

Elderday Care (a Social Day Care Program) for folks with memory loss and various degrees of dementia has a few immediate openings available. Transportation is provided with sliding scale fees. Interesting program includes meals, snacks; and activities that all can easily participate. Consider this a great safe way to provide social activities for your loved one. Call (732) 777-1940 for information.

Openings are now available for Challenging Adult Minds and Energizing Ourselves, a social day care program tailored to the needs of adults who are physically disabled, but cognitively alert. Some of the activities designed for CAMEO are book reviews, exercise, day trips, painting, discussions of current events and special interest group activities. Transportation is provided with sliding scale fees. Call (732) 777-1940.

Middlesex Borough BUS TRANSPORTATION is available for borough seniors. Sign up by calling (732) 356-0414. Wednesdays are Senior Day at the club.

The Middlesex Borough Office on Aging is collecting old cell phones to distribute to the homebound for 911 use. If you have one to donate, call the office at (732) 356-0414.

For information and to register for any of the above programs, contact Sheila at (732) 356-0414.

NEW JERSEY DOOR WORKS

Representing America's Finest Manufacturers

Wayne Dalton, Amarr, EZ Set, FIMBEL, DS

908-624-1234 • 689 RAMSEY AVENUE • HILLSIDE

Your Complete Resource for Residential Carriage House-Style Overhead Garage Doors and Openers

\$100 OFF Carriage House Garage Doors or Garage Doors with Windows
Present coupon for offer

FREE Keyless Entry with purchase of garage door and opener
Present coupon for offer

FREE Removal of Old Door
Present coupon for offer

Prime Plus
1.25%
Preferred Equity Credit Line

We're the bank that lets your home's equity work for you

At Investors, you get great rates with no application fees, no closing costs** and no prepayment penalties. And enjoy great service that money can't buy. Call 888.863.8455 or visit us today.

INVESTORS
EQUITY CREDIT LINE

*An outstanding balance of more than \$25,000 is required to be eligible for the stated Annual Percentage Rate. As of 3/12/07, the Prime Rate published in the Wall Street Journal is 4.25%. Prime minus .85% for balances of \$10,000 or less and Prime minus .50% for balances over \$10,000 up to \$25,000. Maximum finance charge is 18%. No cash advance features. To obtain this product, you must use a Preferred Plus Banking Relationship. Customers must have a monthly payment to automatic bill payment from a new or existing Investors checking or savings account. Rates and conditions are subject to change without notice.

INVESTORS EQUITY CREDIT LINE is a service of INVESTORS BANK, a member of the Investors Bank Group. Member FDIC.

The Reporter
Home Improvement
Somerset Messenger-Gazette • The Chronicle

To Place Your Ad Call: Rebecca 908-894-1082
E-mail: ruplinger@express-times.com

Deadline is Noon on Thursday prior to publication

BUILDING • REMODELING

DECKS UNLIMITED

*****all sizes and shapes*****

We build all sizes and shapes

- Composite •
- Maintenance Free •

Free Estimates • Fully Guaranteed

908-707-4447

CLEAN-UP/REMOVAL

TIED OF THE CLUTTER?

• Cellars • Garages • Attics • Estates

ARTIE'S Clean-Up

LOWEST PRICES!

Fully Insured • Reliable Service

732-238-6111 or 908-221-1123

\$25 Off With AD!

FLOORING

SPARKLE

Hardwood Floor Specialists

Installed • Refinished • Sanded

Carpet, Upholstery & On Site Drapery Care

Oriental & Area Rugs Cleaned & Restored

800-307-4494 • 908-464-2653

HOME IMPROVEMENT

DIFRANCESCO CONSTRUCTION

Remodeling • Additions • Kitchens

Bathrooms • Basements

Decks/Brick Patio

All Types of Carpentry • Free Estimates

www.difrancescoconstruction.com

Difrancescoconstruction@hotmail.com

908-789-8418

PAINTING

Netherwood Painting & Restoration

Quality Courteous Hassle Free Service

Interior-Exterior • Drywall • Plaster

Tile Repairs • Light Carpentry

Kitchens-Baths-Basements Remodeled

OLIVER NOLTE (908) 251-1138

CARPENTRY

Advanced Carpentry Services, LLC

FREE EST. FULLY INS. 22 YRS EXP

Alterations • Attics • Basements • Painting

Custom Decks • Restorations

Int./Ext. Doors • Garages

Kitchens • Baths • Replacement Windows

732-424-8200 • 800-710-1151

CLEANUP SERVICES

AL'S CLEAN UP

Yards • Cellars • Garages • Etc.

Estate Clean Outs

"We Are The Cheapest"

10% Off w/Ad

732-257-7197

HOME IMPROVEMENT

AMERICAN HOME REMODELING

FREE ESTIMATES

100% FINANCING

EXTERIOR HOME IMPROVEMENTS

10% OFF WITH AD (Expires 3/31/08)

Vinyl Siding • Masonry (Stone & Steps)

Roofing • Windows & Doors

Family Owned & Operated for 35 Years

NY/NJ Conn. Licensed & Insured

DCA # 13VH01504400

1-800-941-5541

www.improvetoday.com • americanhome1@aol.com

To Advertise In Our Home Improvement Directory

Call Rebecca

908-894-1082

ROOFING

Since 1968

IPENYAK ROOFING CO.

908-753-4222

www.penyakroofing.com

CARPENTRY

PROFESSIONAL CARPENTRY

Roofing • Siding • Windows

Doors • Porches • Decks

Most Repairs • Free Est

35 Yrs Exp. Call Len

908-561-4073

CLEAN-UP SERVICE

DANCE

Demolition & Clean-Up

"We Clean-Up • Not Your Pockets"

All Types of Debris Removed

Attics • Basements • Garages

Demolition-All Phases of Interior • Exterior

Bathrooms • Kitchen Specialists

908-759-1463

DRIVEWAYS

DOUGHERTY PAVING

Driveways • Parking Lots

Concrete & Masonry

• Excavation •

Brick Paver Walkways & Patios • Curbing

Free Est. Fully Ins.

908-561-6452

LANDSCAPING

A-Tech Landscape Design

Brick Paver Driveways, Patios and Walkways

Retaining Walls, Out Door Kitchens, Landscape

Lighting, Ponds, Pool Scapes, Landscape

Design, Construction and Installation, Drainage

Systems, Lawn Maintenance

All Major Credit Cards Accepted, Financing Available

Fully Insured

New Jersey License

908-769-9698

To Advertise In Our Home Improvement Directory Call Rebecca

908-894-1082

OIL TANKS

PRO TANK SERVICES

REMOVED • FILLED • INSTALLED

NJ APPROVED • 16 YRS EXPERIENCE

908-851-0057

www.protankservices.com

PLACE YOUR AD 24 HOURS A DAY, 7 DAYS A WEEK AT:

800.559.9495



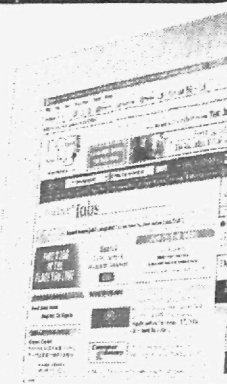
Count on us Classifieds

Somerset County

From across the street to across the state, The Reporter & NJ.com has what you're looking for!

We're powered by New Jersey's largest web site for local news & information - nj.com!

nj.com Everything Jersey
www.nj.com/placead



Classification 1385

Employment Classification 201

Merchandise Classification 550

Classified In-column deadline: Monday at 5 p.m.

Announcements**Announcements 105****Disclaimer**

The Reporter, Messenger-Gazette & The Chronicle reserves the right to edit, reclassify or reject any classified advertising at any time and will not be responsible for errors after the first day of publication. The Reporter, Messenger-Gazette & The Chronicle liability shall be limited to an adjustment for the cost of the space occupied by the error and will not be liable for failure to publish an ad.

Prayers 150

NOVENA PRAYER
May the Sacred Heart of Jesus be adored, glorified, loved and preserved throughout the world now and forever. Sacred Heart of Jesus, have mercy upon us. St. Jude, Worker of Miracles, pray for us. Say this prayer 9 times a day for 9 days & your petitions will be heard. Have this prayer published 9 times in honor of the Sacred Heart & St. Jude.

YOU TOO CAN BE A BIG WINNER!

But not if you answer ads that promise easy riches. Call 1-800-876-7060 and learn how to spot telemarketing fraud. It's easy, it's free, and you can do it at home.

PARTNERSHIP FOR CONSUMER EDUCATION

A public service message brought to you by this publication and the Federal Trade Commission.

Employment**Education 201****JOB COACH PT**

Midland Adult Services, Inc., a nationally recognized school/work program associated with the Midland School in North Branch, NJ (Somerset County), is seeking a part-time Job Coach/Aide to train young adults with learning disabilities in-house as well as out in the work force. High school diploma required. Call: 908-722-7727 EOE A/A

PRESCHOOL TEACHERS & AIDES

Private preschool & kindergarten in Somerset is looking for certified, experienced, creative teachers for September 2007. Competitive salary & benefits. e-mail resume to: jbrown@thecrestwoodschool.com

Child Care 202**ASSISTANT TEACHERS**

PT & FT All Age groups, Child Care exp. necessary. Great Pay & Exc. Bnfts. Call: 908-231-8600

Employment Agencies 205

Immediate Job Openings! STAFFING ALTERNATIVES Call 732-246-1687

Drivers 230**Chauffeurs Needed**

For busy Hunterdon Co. based limousine service. FT & PT opportunities. CDL a definite plus. Call for interview appointment. 908-735-8865

Drivers 230**DRIVERS**

FT, Mon-Fri, Whitehouse based Messenger & Delivery Service offering competitive wages & benefits. Reliable, safe, driver able to pass DOT physical. Call 1-800-527-0696

SCHOOL BUS DRIVERS

Athletics/Field trips/Routes. For Hillsborough/Flemington areas. CDL BPS preferred. \$17 per Hour! Call Hager Bus: 908-788-9755

Tandem Truck Driver

Mack dump, Somerset area. Exp. nec. Clean DL. 908-507-9677

General Help 240**General Help 240**

\$700-\$800,000+ **2007** FREE CASH GRANTS! NEVER REPEAT! Personal/Medical Bills, School, Business, AS SEEN ON T.V. Live Operators! Call Now! 1-800-592-0366 Ext. 225

CHILD CARE

Work in your own home. Apply at Monday Morning Inc 908/526-4884

COUNTER HELP

Friendly, outgoing individuals to work over the counter in new Clinton deli, no experience necessary will train the right people. FT/PT flexible hours. Call Rich 908-797-5197

FENCE

Installers, Laborers, Sub-contractors, Sales 1-800-262-3245

FREE CASH GRANTS!

\$700-\$800,000+ **2007** NEVER REPEAT! Personal/Medical Bills, School, Business, Housing, \$49 billion unclaimed 2006! Live Operators! CALL NOW! 1-800-592-0366 Ext. 224

LIFEGUARD

FT/PT good pay. Bridgewater & Edison. 201-832-7376

General Help 240**HELP WANTED**

Earn Extra Income assembling CD cases from Home Working with Top US companies. Start Immediately. No experience necessary. 1-800-405-7619 Ext 104 www.easyworkgreatpay.com

LANDSCAPE INDIVIDUAL

Knowledge of machinery, installing walls, patios, grading and drainage, plants & walkways. Min. 3 yrs. exp. DL req'd. CDL pref'd. Pay based on exp. Call 908-413-0574.

MANICURIST

Salon Visage of Westfield seeking FT manicurist. 908-232-2726

OFFICE MANAGER

Established company. Quickbooks. Benefits. 908-510-9543

Residential Assistant

PT/Working with women in early sobriety/recovery. Residential setting. Job includes driving, must have valid DL. N/S environment. Women encouraged to apply. Please call 908-534-5818 or mail resume to Executive Director PO Box 135 Whitehouse Station, NJ 08889 Fax 908-534-8871

RESTAURANT

Panther Valley Golf & Country Club seeking energetic candidates for employment. Servers, Bartenders, snack stand attendants, dishwashers. Please call 908-850-0800

SECRET SHOPPERS NEEDED

IMMEDIATELY For Store Evaluations. Local Stores, Restaurants, & Theaters. Training Provided. Flexible Hours. Up to \$50 per assignment!! 1-800-585-9024 ext. 6262

General Help 240**Retail Administrative Assistant**

Hunterdon, Somerville and Warren Divisions. This multi task position requires a very organized deadline driven individual who has proficient working knowledge of WORD and EXCEL, knowledge of data base programs and File Maker necessary. The position is based out of Flemington NJ, and requires use of own car and valid drivers license. Employees interested in additional details and/or making a formal application for the position should e-mail at njnpublishing.com

STABLE HELP

Needed for large Glen Gardner horse farm. FT - PT openings Call: 908-638-8195

SUMMER EMPLOYMENT

Hunterdon County Day Camp *Camp Nurse/EMT *Sports & Pool Staff 908-735-8336 winneday@ptd.net

Teacher & Teacher Assistant

For accredited pre school in Branchburg. Degree preferred for Teacher position. Benefits include discounted child care. 908-231-7800

Medical Help 250**DENTAL ASSISTANT**

FT, efficient, organized person for 2 office practices. Army lic. req'd. CDA or RDA pref'd. Branchburg area. Benefits. Please email resume: dental_app_202@yahoo.com

Medical Help 250**X-RAY TECHNICIAN**

For orthopedic practice. Summit, FT. Email resume to: Medicaloffice33@aol.com

Sales Help 265**SUMMER HELP**

Swimming Pool, Spa dealer has Seasonal & FT positions avail. Will train. \$10-\$12/Hr. Call Ryan: 908-534-9209

Employment Trades 275**MECHANIC**

Needed for power equipment store, for repairing all types of power equipment. Mowers, lawn tractors, ATV, etc. Exp. necessary, excellent pay & benefits. Call Walt's Outdoor Center 908-782-5654

Situations Wanted 280

Polish Referral Svc Inc. providing live-in-out housekeeper for elderly. Licensed & Bonded 908-689-9140

Real Estate Sales**Acres & Lots 305****MUST SEE**

EAST AMWELL TWP 7 acs, near golf course & septic and well installed, ready to build, \$349,900. Call eves. 609-466-0977

Condos & Townhouses 320**GORGEOUS**

CUNTON - Beaver Brook 1 BR condo, 1" fir, exc cond, FSBO \$175,000. 908-399-7452

Condos & Townhouses 320**All real estate advertising in this newspaper is subject to the Federal Fair Housing Amendments Act and the New Jersey Civil Rights Law, which make it illegal to advertise any preference, limitation or discrimination based on race, color, religion, sex, national origin, handicap, familial status, creed, ancestry, marital status, affectional or sexual orientation, or nationality, or an intention to make any such preference, limitation or discrimination. Familial status includes children under the age of 18 living with parents or legal custodians, pregnant women and people securing custody of children under 18. This newspaper will not knowingly accept any advertising for real estate which is in violation of the law. To report discrimination, call the Office of Fair Housing and Equal Opportunity of the U.S. Department of Housing and Urban Development (HUD) at 1-800-669-9777. The HUD TTY telephone number for the hearing impaired is 212-708-1455.****Out of State Property 355****TENNESSEE - Premier Land Sales!**

1.3ac. homesites! Waterfalls, lakes, bluffs, & paved roads, utilities, horseback riding, golf, fishing, white water rafting. Owner financing, low down. Starting \$19,900. 811-2158; www.TNlots.com

Vacation Property For Sale 380

Luxury Ski/Vacation home. Fish for trout in your front yard, only 8 miles to closest ski area. Easy access to Denver and Summit County. www.realtor.com/pro/p/1067355303

Real Estate Rentals**Apartment 405****MUST SEE**

FLEMINGTON - 1BR apt \$875; Exc. location, brand new kitchen with d/w, w/d, parking. 908-604-2774

PUBLISHER'S NOTICE

All residential real estate advertising in this newspaper is subject to the Federal Fair Housing Act, the New Jersey Law Against Discrimination and the Pennsylvania Human Relations Act. These laws prohibit discrimination in the sale, rental or financing of dwellings.

The Fair Housing Act makes it illegal to advertise "any preference, limitation, discrimination because of race, color, religion, sex, handicap, familial status, or national origin, or intention to make any such preference, limitation, or discrimination." Familial status includes children under the age of 18 living with parents or legal guardians; pregnant women and people securing custody of children under 18.**In addition to the protections noted above, New Jersey law prohibits discrimination based on creed, ancestry, marital status, affectional or sexual orientation, or nationality, and Pennsylvania law prohibits discrimination on the basis of age, disability or ancestry.****The newspaper will not knowingly accept or print any advertising for residential real estate which violates the law.****To report housing discrimination, call the Office of Fair Housing and Equal Opportunity of the U.S. Department of Housing and Urban Development (HUD) at 1-800-669-9777. The HUD TTY telephone number for the hearing impaired is (212) 708-1455.****In New Jersey, call the Division of Civil Rights in the Department of Law and Public Safety at (609) 964-3100. In Pennsylvania, call the Pennsylvania Human Relations Commission at (717) 787-4410 or the Fair Housing Council of Suburban Philadelphia at (610) 664-4411.****Income Property For Sale 335****Timeshare Resales**

The cheapest way to Buy Sell and Rent Timeshares. No Commissions or Broker Fees. Call 1-800-640-6886 or go to www.buytimeshare.com

Out of State Property 355**BUY ** TIMESHARE REALES**

60-80% OFF RETAIL! BEST RESORTS & SEASONS. Call for FREE TIMESHARE MAGAZINE! 1-800-639-5219 or go to www.holidaygroup.com/filer

FREE VACATION TENNESSEE MNITS

Free Vacation to visit our mountain acreage community overlooking the Tennessee River. Call 706-657-7655

Garage & Storage For Rent 410

Flemington 1400 Sq Ft, Gar-storage, Double Over Head door, Asking \$675/mo 908-832-0276

South Plainfield

3 Bay Gar, Park Ave Gas Station, Incl Office, Parts Rm, Avail 05/01 908-754-2574

Houses For Rent 430

BRIDGEWATER: 2 BR, driveway, w/d, no pets. \$1450/mo. 404-435-0820

Out of State Property 355**TENNESSEE - Premier Land Sales!**

1.3ac. homesites! Waterfalls, lakes, bluffs, & paved roads, utilities, horseback riding, golf, fishing, white water rafting. Owner financing, low down. Starting \$19,900. 811-2158; www.TNlots.com

Vacation Property For Sale 380

Luxury Ski/Vacation home. Fish for trout in your front yard, only 8 miles to closest ski area. Easy access to Denver and Summit County. www.realtor.com/pro/p/1067355303

Real Estate Rentals**Apartment 405****MUST SEE**

FLEMINGTON - 1BR apt \$875; Exc. location, brand new kitchen with d/w, w/d, parking. 908-604-2774

PUBLISHER'S NOTICE

All residential real estate advertising in this newspaper is subject to the Federal Fair Housing Act, the New Jersey Law Against Discrimination and the Pennsylvania Human Relations Act. These laws prohibit discrimination in the sale, rental or financing of dwellings.

The Fair Housing Act makes it illegal to advertise "any preference, limitation, discrimination because of race, color, religion, sex, handicap, familial status, or national origin, or intention to make any such preference, limitation, or discrimination." Familial status includes children under the age of 18 living with parents or legal guardians; pregnant women and people securing custody of children under 18.**In addition to the protections noted above, New Jersey law prohibits discrimination based on creed, ancestry, marital status, affectional or sexual orientation, or nationality, and Pennsylvania law prohibits discrimination on the basis of age, disability or ancestry.****The newspaper will not knowingly accept or print any advertising for residential real estate which violates the law.****To report housing discrimination, call the Office of Fair Housing and Equal Opportunity of the U.S. Department of Housing and Urban Development (HUD) at 1-800-669-9777. The HUD TTY telephone number for the hearing impaired is (212) 708-1455.****In New Jersey, call the Division of Civil Rights in the Department of Law and Public Safety at (609) 964-3100. In Pennsylvania, call the Pennsylvania Human Relations Commission at (717) 787-4410 or the Fair Housing Council of Suburban Philadelphia at (610) 664-4411.****Income Property For Sale 335****Timeshare Resales**

The cheapest way to Buy Sell and Rent Timeshares. No Commissions or Broker Fees. Call 1-800-640-6886 or go to www.buytimeshare.com

Out of State Property 355**BUY ** TIMESHARE REALES**

60-80% OFF RETAIL! BEST RESORTS & SEASONS. Call for FREE TIMESHARE MAGAZINE! 1-800-639-5219 or go to www.holidaygroup.com/filer

FREE VACATION TENNESSEE MNITS

Free Vacation to visit our mountain acreage community overlooking the Tennessee River. Call 706-657-7655

Garage & Storage For Rent 410

Flemington 1400 Sq Ft, Gar-storage, Double Over Head door, Asking \$675/mo 908-832-0276

South Plainfield

3 Bay Gar, Park Ave Gas Station, Incl Office, Parts Rm, Avail 05/01 908-754-2574

Houses For Rent 430

BRIDGEWATER: 2 BR, driveway, w/d, no pets. \$1450/mo. 404-435-0820

Real Estate Rentals**Apartment 405**

Lambertville - 1BR 2" Flr Apt, \$800/mo + Utilities Call 215-794-3021

Lambertville - 1/2 House, On the canal, \$1400/mo, 2BR, + Utilities w/prkg. Call - 215-794-3021**BEAUTIFUL!**

Lambertville - 1/2 House w/yard Heat Incl, \$1200/mo + Utilities. 215-794-3021

Middlesex, NJ 2BR, in quiet neighborhood. \$1100 + util., 1.5 mo. sec., wash/dryer on premises. 732-690-7814**GORGEOUS**

NORTH PLAINFIELD 2 BR apt North of Rt 22, \$1100/mo. Avail 5/1. 732-560-1628

N Plainfield - 2 Family 2BR, w/D Hup, \$1075 + Util., NO PETS, aft 6 908-561-5085**Commercial Property For Rent 410**

Auto Repair Shop, Bernard's Twp, NJ 5 bays, 3 lifts, 30 years at great location. Modern facility. Equipment available. Renting \$4500/monthly lease. 908-832-0190

Competitive Pricing**MUST SEE!****FLEMINGTON PLAZA I****Commerce St Various Sizes****1" Class****Retail And Office Space****600-7500 s.f. 908-782-7043****Flemington Main St**

Office suites move in cond, CAC, off st, prng. Also 1500 sf Wine/Storage 908-832-0276

RT 12 Business Park

2750 sf and Larger Flex Lease Terms, Avail March, Ample Prkg, High Ceilings Will fit out to needs. Each unit incl Office w/ADA Bath Alex 908-782-1555

Garage & Storage For Rent 410

Flemington 1400 Sq Ft, Gar-storage, Double Over Head door, Asking \$675/mo 908-832-0276

South Plainfield

3 Bay Gar, Park Ave Gas Station, Incl Office, Parts Rm, Avail 05/01 908-754-2574

Houses For Rent 430

BRIDGEWATER: 2 BR, driveway, w/d, no pets. \$1450/mo. 404-435-0820

BRIDGEWATER: 2 BR, driveway, w/d, no pets. \$1450/mo. 404-435-0820**BRIDGEWATER: 2 BR, driveway, w/d, no pets. \$1450/mo. 404-435-0820****BRIDGEWATER: 2 BR, driveway, w/d, no pets. \$1450/mo. 404-435-0820****BRIDGEWATER: 2 BR, driveway, w/d, no pets. \$1450/mo. 404-435-0820****BRIDGEWATER: 2 BR, driveway, w/d, no pets. \$1450/mo. 404-435-0820****BRIDGEWATER: 2 BR, driveway, w/d, no pets. \$1450/mo. 404-435-0820****BRIDGEWATER: 2 BR, driveway, w/d, no pets. \$1450/mo. 404-435-0820****BRIDGEWATER: 2 BR, driveway, w/d, no pets. \$1450/mo. 404-435-0820****BRIDGEWATER: 2 BR, driveway, w/d, no pets. \$1450/mo. 404-435-0820****BRIDGEWATER: 2 BR, driveway, w/d, no pets. \$1450/mo. 404-435-0**

Townhouses/Condos For Rent 475

GORGEOUS

CLINTON - Beaver Brook 1 BR, all appl, exc cond, \$1150/mo + util, 1.5 mo sec dep. Avail Immed. 908-399-7452

Three Bridges Hunter's Crossing Condo, 2br, 2 ba, lower end unit, new carpet, fresh paint \$2500/mo + util, 2 mo sec dep + refs. No pets, no smoking 908-782-1120

Merchandise

Furniture 560

Mattress + Box New \$159. New Dining Rm \$899. Can deliver 908-281-7117

Sofa + Loveseat New \$399. Also model house furniture, can deliver 908-281-7117

For The Farm 565

6,000 Bales of Hay at \$3.00 per bale. 2,000 bales of straw at \$3.00 per bale. 908-295-7816

Bargain Basement 573

Jogging Stroller Kelly, double, 2 yrs old, barely used, \$200. 848-459-2893

General Merchandise 580

Mausoleum 2 crypts Woodbridge Memorial Gardens, \$5,000. 908-754-5556

Spa + Hot Tub Covers \$99 + UP. Cover lifters \$169. 888-772-7810

Lawn & Garden 581

LANDSCAPING TRAILER: 5x10, heavy duty 15" tires 4 gate, 1 yr old, \$900. 908-451-0704

Musical Instruments 585

I Buy GUITARS & ALL MUSICAL INSTRUMENTS. Call Rob 609-577-3337

Flea Markets 599

78's, 45's, LP's, Record Expo Sun 4/15, 10am Holiday Inn Rt 35, Hazlet, NJ 732-583-4150

Estate & Tag Sales 603

BRIDGEWATER ESTATE CONTENTS SALE 5 FROHLIN DRIVE SAT & SUN 4-14 & 4-15 8:30am - 3:00pm (off Washington Valley Rd)

Furn incl LR, twin BR set, nearly new kit tbl w/6 chs, burg lthr couch & ch w/ottoman pr bookcases, Kingsley Lenox & Norlake Raleigh pattern dishes, 21 old Hummels, much Lenox, crystal including Gorham, Wedgewood, lthr top desk, lamps, kitchenware, holiday, linens, new jewelry incl gold/silver, clothing, TVs, outdoor furn, snowblower, treadmill, tools, many smalls. Numbers at 8am. Cash only. A REFUND SALE

ESTATE SALE

Sat. 4/14 Sun. 4/15 Sat. 9a-4p Sun. 9a-2p 50 Sycamore Way Warren, NJ (Mountain Blvd/ Peachtree Lane/ Sycamore Way) Contents will include mahogany wall unit, 2 Bedroom sets, Ethan Allen baker's rack, area rugs, art deco, kitchen items, freezer, TV's, & more! 908-222-7501

Wanted To Buy 625

All Lionel & Other Trains Top cash prices pd. 973-334-8709 or 201-404-8030

Pets 640

Puppies!

AUSTRALIAN SHEPHERD PUPPIES AKC/Merie Coats 9650 908-995-2999

Financial/Business

Business Opportunities 650

FREE CASH GRANTS! \$700-\$800,000+ **2007** NEVER REPAY! Personal Bills, Business, Housing, \$49 billion unclaimed 2006 Live Operators! CALL NOW! 1-800-592-0366 Ext.226

Movie Extras

Make up to \$250/day All looks and ages 1-800-714-7501

LOOK!

Post Office Now Hiring! Avg. pay \$20/hr or \$57k annually including Federal Benefits & OT. Paid Training, Vac. P/T/FT. Small unit fee. 1-800-584-1775 x 1100 USWA

Well established for 17 years in Somerset County.

Fully equipped, immaculate turn-key operation. Excellent growth opportunity. Low rent. leave message at 908-788-7975

Financial Services 655

STOP FORECLOSURE guaranteed. This is not bankruptcy. We do not buy houses. 800-771-4453 ext. 3550. www.house911.com

Financial Services 655

\$\$\$ACCESS LAWSUIT CASH NOW!!! As seen on TV. Injury Lawsuit Dragging? Need \$500,000+ within 48 hrs? Low rates APPLY NOW BY PHONE! 1-866-366-3692 www.injuryadvances.com

Professional Services

Child Care/Nursery Schools 734

Monday Morning Inc. Reliable, insured care for infants & toddlers. 908-526-4884

Miscellaneous 777

Reach over 30 million homes with one buy. Advertise in NANI for one low price! 877-203-2327

Recreational Vehicles

Boats & Motors 1330

Mercury Electric: 16' Center Console, 25HP, w/ Trailer, \$3750. 732-868-0065

Transportation

Autos For Sale 1385

BMW Z4 25i 2003 5SPD, PW, PL, PS, PB, TILT, LEATHER, CRUISE, ABS, CD, 37,846 MILES, VIN# 31R65566 \$23,995

Transportation

Autos For Sale 1385

CADILLAC CTS 2003 LEATHER, ONSTAR, NAVIGATION, 34,869MI, STK# 813584 VIN# 30169727 \$29,995

Transportation

Autos For Sale 1385

CADILLAC CTS 2005 LEATHER, S/ROOF, HEATED SEATS, MEMORY & PERSONALIZATION, ONSTAR NAVIGATION, 27,850 MILES, STK# 813603 VIN# 50178217 \$31,995

Transportation

Autos For Sale 1385

CADILLAC CTS 2005 LEATHER, S/ROOF, HEATED SEATS, MEMORY & PERSONALIZATION, ONSTAR NAVIGATION, 27,850 MILES, STK# 813603 VIN# 50178217 \$31,995

Transportation

Autos For Sale 1385

CADILLAC CTS 2005 LEATHER, S/ROOF, HEATED SEATS, MEMORY & PERSONALIZATION, ONSTAR NAVIGATION, 27,850 MILES, STK# 813603 VIN# 50178217 \$31,995

Transportation

Autos For Sale 1385

CADILLAC CTS 2005 LEATHER, S/ROOF, HEATED SEATS, MEMORY & PERSONALIZATION, ONSTAR NAVIGATION, 27,850 MILES, STK# 813603 VIN# 50178217 \$31,995

Transportation

Autos For Sale 1385

CADILLAC CTS 2005 LEATHER, S/ROOF, HEATED SEATS, MEMORY & PERSONALIZATION, ONSTAR NAVIGATION, 27,850 MILES, STK# 813603 VIN# 50178217 \$31,995

Transportation

Autos For Sale 1385

CADILLAC CTS 2005 LEATHER, S/ROOF, HEATED SEATS, MEMORY & PERSONALIZATION, ONSTAR NAVIGATION, 27,850 MILES, STK# 813603 VIN# 50178217 \$31,995

Transportation

Autos For Sale 1385

CADILLAC CTS 2005 LEATHER, S/ROOF, HEATED SEATS, MEMORY & PERSONALIZATION, ONSTAR NAVIGATION, 27,850 MILES, STK# 813603 VIN# 50178217 \$31,995

Transportation

Autos For Sale 1385

CADILLAC CTS 2005 LEATHER, S/ROOF, HEATED SEATS, MEMORY & PERSONALIZATION, ONSTAR NAVIGATION, 27,850 MILES, STK# 813603 VIN# 50178217 \$31,995

Transportation

Autos For Sale 1385

CADILLAC CTS 2005 LEATHER, S/ROOF, HEATED SEATS, MEMORY & PERSONALIZATION, ONSTAR NAVIGATION, 27,850 MILES, STK# 813603 VIN# 50178217 \$31,995

Transportation

Autos For Sale 1385

CADILLAC CTS 2005 LEATHER, S/ROOF, HEATED SEATS, MEMORY & PERSONALIZATION, ONSTAR NAVIGATION, 27,850 MILES, STK# 813603 VIN# 50178217 \$31,995

Transportation

Autos For Sale 1385

CADILLAC CTS 2005 LEATHER, S/ROOF, HEATED SEATS, MEMORY & PERSONALIZATION, ONSTAR NAVIGATION, 27,850 MILES, STK# 813603 VIN# 50178217 \$31,995

Transportation

Autos For Sale 1385

CADILLAC CTS 2005 LEATHER, S/ROOF, HEATED SEATS, MEMORY & PERSONALIZATION, ONSTAR NAVIGATION, 27,850 MILES, STK# 813603 VIN# 50178217 \$31,995

Transportation

Autos For Sale 1385

CADILLAC CTS 2005 LEATHER, S/ROOF, HEATED SEATS, MEMORY & PERSONALIZATION, ONSTAR NAVIGATION, 27,850 MILES, STK# 813603 VIN# 50178217 \$31,995

Transportation

Autos For Sale 1385

CADILLAC CTS 2005 LEATHER, S/ROOF, HEATED SEATS, MEMORY & PERSONALIZATION, ONSTAR NAVIGATION, 27,850 MILES, STK# 813603 VIN# 50178217 \$31,995

Transportation

Autos For Sale 1385

CADILLAC CTS 2005 LEATHER, S/ROOF, HEATED SEATS, MEMORY & PERSONALIZATION, ONSTAR NAVIGATION, 27,850 MILES, STK# 813603 VIN# 50178217 \$31,995

Transportation

Autos For Sale 1385

CADILLAC CTS 2005 LEATHER, S/ROOF, HEATED SEATS, MEMORY & PERSONALIZATION, ONSTAR NAVIGATION, 27,850 MILES, STK# 813603 VIN# 50178217 \$31,995

Transportation

Autos For Sale 1385

ACURA TSX 2004 4CYL, 4DR, 6SPD, LEATHER, M/ROOF, A/C, CD, PW, PL, 47,446 MI, \$19,995

Transportation

Autos For Sale 1385

CADILLAC CTS 2005 LEATHER HEATED SEATS, MEMORY & PERSONALIZATION, ONSTAR NAVIGATION, 33,004 MILES, STK# 813617 VIN# 50113545 \$27,995

Transportation

Autos For Sale 1385

CADILLAC CTS 2005 LEATHER, S/ROOF, DVD NAVIGATION, 14,527 MILES, STK# 813620 VIN# 50149604 \$30,995

Transportation

Autos For Sale 1385

CADILLAC CTS 2005 LEATHER, S/ROOF, DVD NAVIGATION, 14,527 MILES, STK# 813620 VIN# 50149604 \$30,995

Transportation

Autos For Sale 1385

CADILLAC CTS 2005 LEATHER, S/ROOF, DVD NAVIGATION, 14,527 MILES, STK# 813620 VIN# 50149604 \$30,995

Transportation

Autos For Sale 1385

CADILLAC CTS 2005 LEATHER, S/ROOF, DVD NAVIGATION, 14,527 MILES, STK# 813620 VIN# 50149604 \$30,995

Transportation

Autos For Sale 1385

CADILLAC CTS 2005 LEATHER, S/ROOF, DVD NAVIGATION, 14,527 MILES, STK# 813620 VIN# 50149604 \$30,995

Transportation

Autos For Sale 1385

CADILLAC CTS 2005 LEATHER, S/ROOF, DVD NAVIGATION, 14,527 MILES, STK# 813620 VIN# 50149604 \$30,995

Transportation

Autos For Sale 1385

CADILLAC CTS 2005 LEATHER, S/ROOF, DVD NAVIGATION, 14,527 MILES, STK# 813620 VIN# 50149604 \$30,995

Transportation

Autos For Sale 1385

CADILLAC CTS 2005 LEATHER, S/ROOF, DVD NAVIGATION, 14,527 MILES, STK# 813620 VIN# 50149604 \$30,995

Transportation

Autos For Sale 1385

CADILLAC CTS 2005 LEATHER, S/ROOF, DVD NAVIGATION, 14,527 MILES, STK# 813620 VIN# 50149604 \$30,995

Transportation

Autos For Sale 1385

CADILLAC CTS 2005 LEATHER, S/ROOF, DVD NAVIGATION, 14,527 MILES, STK# 813620 VIN# 50149604 \$30,995

Transportation

Autos For Sale 1385

CADILLAC CTS 2005 LEATHER, S/ROOF, DVD NAVIGATION, 14,527 MILES, STK# 813620 VIN# 50149604 \$30,995

Transportation

Autos For Sale 1385

CADILLAC CTS 2005 LEATHER, S/ROOF, DVD NAVIGATION, 14,527 MILES, STK# 813620 VIN# 50149604 \$30,995

Transportation

Autos For Sale 1385

CADILLAC CTS 2005 LEATHER, S/ROOF, DVD NAVIGATION, 14,527 MILES, STK# 813620 VIN# 50149604 \$30,995

Transportation

Autos For Sale 1385

CADILLAC CTS 2005 LEATHER, S/ROOF, DVD NAVIGATION, 14,527 MILES, STK# 813620 VIN# 50149604 \$30,995

Transportation

Autos For Sale 1385

CADILLAC CTS 2005 LEATHER, S/ROOF, DVD NAVIGATION, 14,527 MILES, STK# 813620 VIN# 50149604 \$30,995

Transportation

Autos For Sale 1385

CADILLAC CTS 2005 LEATHER, S/ROOF, DVD NAVIGATION, 14,527 MILES, STK# 813620 VIN# 50149604 \$30,995

Transportation

Autos For Sale 1385

CADILLAC CTS 2005 LEATHER, S/ROOF, DVD NAVIGATION, 14,527 MILES, STK# 813620 VIN# 50149604 \$30,995

Transportation

Autos For Sale 1385

CADILLAC CTS 2005 LEATHER, S/ROOF, DVD NAVIGATION, 14,527 MILES, STK# 813620 VIN# 50149604 \$30,995

Transportation

Autos For Sale 1385

CADILLAC CTS 2005 LEATHER, S/ROOF, DVD NAVIGATION, 14,527 MILES, STK# 813620 VIN# 50149604 \$30,995

Transportation

Autos For Sale 1385

CADILLAC CTS 2005 LEATHER, S/ROOF, DVD NAVIGATION, 14,527 MILES, STK# 813620 VIN# 50149604 \$30,995

Transportation

Autos For Sale 1385

CADILLAC CTS 2005 LEATHER HEATED SEATS, MEMORY & PERSONALIZATION, ONSTAR NAVIGATION, 33,004 MILES, STK# 813617 VIN# 50113545 \$27,995

Transportation

Autos For Sale 1385

CADILLAC CTS 2005 LEATHER, S/ROOF, DVD NAVIGATION, 14,527 MILES, STK# 813620 VIN# 50149604 \$30,995

Transportation

Autos For Sale 1385

CADILLAC CTS 2005 LEATHER, S/ROOF, DVD NAVIGATION, 14,527 MILES, STK# 813620 VIN# 50149604 \$30,995

Transportation

Autos For Sale 1385

CADILLAC CTS 2005 LEATHER, S/ROOF, DVD NAVIGATION, 14,527 MILES, STK# 813620 VIN# 50149604 \$30,995

Transportation

Autos For Sale 1385

CADILLAC CTS 2005 LEATHER, S/ROOF, DVD NAVIGATION, 14,527 MILES, STK# 813620 VIN# 50149604 \$30,995

Transportation

Autos For Sale 1385

Transportation

Autos For Sale 1385

FORD F450 DUMP TRUCK 2005
2DR, 8CYL, AUTO, DIESEL, STOCK# CD6789, VIN# 5EA87638
\$35,950
WYMAN
1713 Springfield Ave
MAPLEWOOD, NJ
973-761-6000
www.wymanford.com

FORD FOCUS SE 2004
SEDAN, 4CYL, AUTO, CD, STOCK# CD2965, VIN# 4W121849
\$9,950
WYMAN
1713 Springfield Ave
MAPLEWOOD, NJ
973-761-6000
www.wymanford.com

FORD FOCUS ZX5 SES 2004
HATCHBACK, 4CYL, AUTO, CD, STOCK# CD2936, VIN# 4R107032
\$9,950
WYMAN
1713 Springfield Ave
MAPLEWOOD, NJ
973-761-6000
www.wymanford.com

FORD FREESTAR SEL 2006
WAGON, 6CYL, AUTO, CD, STOCK# CD2933, VIN# 6BA55662
\$16,950
WYMAN
1713 Springfield Ave
MAPLEWOOD, NJ
973-761-6000
www.wymanford.com

FORD FREESTAR SEL 2004
6CYL, AUTO, 70,144 MILES, STOCK# 71409A, VIN# 4BA37933
\$11,995
James TOYOTA
172 HWY 202/31 N
FLEMINGTON, NJ
908-788-5700
jamestoyotascion.com

FORD FREESTYLE LIMITED 2005
4DR, WAGON, 6CYL, AUTO, CD, STOCK# CD2968, VIN# 5GA55464
\$18,950
WYMAN
1713 Springfield Ave
MAPLEWOOD, NJ
973-761-6000
www.wymanford.com

FORD TAURUS SE 2006
4DR, AUTO, CD, STOCK# CD2940, VIN# 6A260589
\$11,950
WYMAN
1713 Springfield Ave
MAPLEWOOD, NJ
973-761-6000
www.wymanford.com

FORD TAURUS SEL 2007
4DR, AUTO, CD, STOCK# CD2963, VIN# 7A149999
\$15,950
WYMAN
1713 Springfield Ave
MAPLEWOOD, NJ
973-761-6000
www.wymanford.com

HONDA ACCORD COUPE 1999
4CYL, SPD, 78,332 MILES, STOCK# 71219A, VIN# XA024952
\$7,995
James TOYOTA
172 HWY 202/31 N
FLEMINGTON, NJ
908-788-5700
jamestoyotascion.com

HONDA ACCORD EX 2003
4CYL, AUTO, 82,092 MILES, STOCK# 70997A, VIN# 3A073562
\$11,995
James TOYOTA
172 HWY 202/31 N
FLEMINGTON, NJ
908-788-5700
jamestoyotascion.com

HONDA CIVIC HYBRID 2003
5SPD, PW, PL, PS, PB, TILT, CRUISE, A/C, ABS, CD, 116,003 MILES, VIN# 35019624
\$8,990
James TOYOTA
172 HWY 202/31 N
FLEMINGTON, NJ
908-788-5700
jamestoyotascion.com

HONDA CR-V EX 2004
5SPD, PW, PL, PS, PB, TILT, CRUISE, A/C, S/ROOF, 80,867 MILES, VIN# 4C000010
\$14,995
James TOYOTA
172 HWY 202/31 N
FLEMINGTON, NJ
908-788-5700
jamestoyotascion.com

HONDA CR-V EX 2004
5SPD, PW, PL, PS, PB, TILT, CRUISE, A/C, S/ROOF, 80,867 MILES, VIN# 4C000010
\$14,995
James TOYOTA
172 HWY 202/31 N
FLEMINGTON, NJ
908-788-5700
jamestoyotascion.com

Transportation

Autos For Sale 1385

JEEP LIBERTY RENEGADE 2005
AUTO, PW, PL, PS, PB, TILT, CRUISE, A/C, CD, S/ROOF, 33,032 MILES, VIN# SW724896
\$17,995
Muller TOYOTA
866-334-2768
mullertoyota.com

JEEP WRANGLER Sahara 1999
6CYL, AUTO, 57,836 MI, STOCK# 70643A, VIN# XP431432
\$10,995
James TOYOTA
172 HWY 202/31 N
FLEMINGTON, NJ
908-788-5700
jamestoyotascion.com

JEEP WRANGLER SPORT 2001
6CYL, AUTO, 67,327 MILES, STOCK# 71124B, VIN# 1P326657
\$12,995
James TOYOTA
172 HWY 202/31 N
FLEMINGTON, NJ
908-788-5700
jamestoyotascion.com

MERCEDES BENZ CLK 320 1999
AUTO, PW, PL, PS, PB, TILT, CRUISE, A/C, ABS, S/ROOF, LEATHER, 89,551 MILES, VIN# XF074452
\$12,999
Muller TOYOTA
866-334-2768
mullertoyota.com

MERCEDES BENZ S420 1997
GOLD, V8, AUTO, LEATHER, M/ROOF, CD CHANGER, FULLY LOADED, 78,900 MI, VIN# VA348160
\$17,215
RIEGLER
312 Springfield Ave
Summit, NJ
908-273-4800

NISSAN 350Z 2003
6SPD, MANUAL, PW, PL, CRUISE, A/C, ABS, CD, 35,446 MILES, VIN# 3T011948
\$19,999
Muller TOYOTA
866-334-2768
mullertoyota.com

NISSAN PATHFINDER LE 2001
AUTO, PW, PL, PS, TILT, CRUISE, A/C, ABS, S/ROOF, LEATHER, 70,395 MI, VIN# 1W513534
\$11,995
Muller TOYOTA
866-334-2768
mullertoyota.com

NISSAN QUEST SE 2000
6CYL, AUTO, 90,699 MILES, STOCK# 71219C, VIN# YD832283
\$7,995
James TOYOTA
172 HWY 202/31 N
FLEMINGTON, NJ
908-788-5700
jamestoyotascion.com

NISSAN QUEST SE 2002
6CYL, AUTO, 66,307 MILES, STOCK# 71377B, VIN# 2D812706
\$10,995
James TOYOTA
172 HWY 202/31 N
FLEMINGTON, NJ
908-788-5700
jamestoyotascion.com

NISSAN SENTRA 1997
4CYL, AUTO, 70,536 MILES, STOCK# 60919B, VIN# VC739912
\$4,495
James TOYOTA
172 HWY 202/31 N
FLEMINGTON, NJ
908-788-5700
jamestoyotascion.com

PONTIAC GRAND AM 1999
AUTO, 82,555 MILES, STOCK# 570052A, VIN# XM865296
\$5,995
James TOYOTA
172 HWY 202/31 N
FLEMINGTON, NJ
908-788-5700
jamestoyotascion.com

PONTIAC GRAND AM 1999
AUTO, 82,555 MILES, STOCK# 570052A, VIN# XM865296
\$5,995
James TOYOTA
172 HWY 202/31 N
FLEMINGTON, NJ
908-788-5700
jamestoyotascion.com

PONTIAC GRAND AM 1999
AUTO, 82,555 MILES, STOCK# 570052A, VIN# XM865296
\$5,995
James TOYOTA
172 HWY 202/31 N
FLEMINGTON, NJ
908-788-5700
jamestoyotascion.com

Transportation

Autos For Sale 1385

PONTIAC TRANSPORT 1998
6CYL, AUTO, 103,046 MILES, STOCK# 70898A, VIN# WD127071
\$4,995
James TOYOTA
172 HWY 202/31 N
FLEMINGTON, NJ
908-788-5700
jamestoyotascion.com

POOR CREDIT NO CREDIT DIVORCE BANKRUPTCY
NO PROBLEM! SEE OUR FINANCE SPECIALISTS CREDIT-4-U NO APPLICATION REFUSED!
866-217-1630

SAAB 9.2X LINEAR 2005
5DR, 4 CYL, 5 SPD, TEXTILE CLOTH INTERIOR PW, PL, A/C, CRUISE, CD, 22,958 MI, VIN# G05141
\$16,995
James TOYOTA
172 HWY 202/31 N
FLEMINGTON, NJ
908-788-5700
jamestoyotascion.com

SAAB 9.3 Linear 2003
5SPD, LEATHER, A/C, CD, PW, PL, 30,115 MI, VIN# 41044104
\$16,995
James TOYOTA
172 HWY 202/31 N
FLEMINGTON, NJ
908-788-5700
jamestoyotascion.com

SAAB 9.3 Linear 2004
4CYL, TURBO, LEATHER, A/C, CD, PW, PL, 20,930 MI, VIN# 41022990
\$18,995
James TOYOTA
172 HWY 202/31 N
FLEMINGTON, NJ
908-788-5700
jamestoyotascion.com

SAAB 9.3 Linear 2004
4CYL, TURBO, LEATHER, A/C, CD, PW, PL, 20,930 MI, VIN# 41022990
\$18,995
James TOYOTA
172 HWY 202/31 N
FLEMINGTON, NJ
908-788-5700
jamestoyotascion.com

SAAB 9.3 Linear 2004
4CYL, TURBO, LEATHER, A/C, CD, PW, PL, 20,930 MI, VIN# 41022990
\$18,995
James TOYOTA
172 HWY 202/31 N
FLEMINGTON, NJ
908-788-5700
jamestoyotascion.com

SAAB 9.3 Linear 2004
4CYL, TURBO, LEATHER, A/C, CD, PW, PL, 20,930 MI, VIN# 41022990
\$18,995
James TOYOTA
172 HWY 202/31 N
FLEMINGTON, NJ
908-788-5700
jamestoyotascion.com

SAAB 9.3 Linear 2004
4CYL, TURBO, LEATHER, A/C, CD, PW, PL, 20,930 MI, VIN# 41022990
\$18,995
James TOYOTA
172 HWY 202/31 N
FLEMINGTON, NJ
908-788-5700
jamestoyotascion.com

SAAB 9.3 Linear 2004
4CYL, TURBO, LEATHER, A/C, CD, PW, PL, 20,930 MI, VIN# 41022990
\$18,995
James TOYOTA
172 HWY 202/31 N
FLEMINGTON, NJ
908-788-5700
jamestoyotascion.com

SAAB 9.3 Linear 2004
4CYL, TURBO, LEATHER, A/C, CD, PW, PL, 20,930 MI, VIN# 41022990
\$18,995
James TOYOTA
172 HWY 202/31 N
FLEMINGTON, NJ
908-788-5700
jamestoyotascion.com

SAAB 9.3 SE 2000
CONVERTIBLE, AUTO, PW, PL, A/C, CD, LEATHER, 73,225 MI, VIN# Y7017440
\$21,995
James TOYOTA
172 HWY 202/31 N
FLEMINGTON, NJ
908-788-5700
jamestoyotascion.com

SAAB 9.3 SE 2000
CONVERTIBLE, AUTO, PW, PL, A/C, CD, LEATHER, 73,225 MI, VIN# Y7017440
\$21,995
James TOYOTA
172 HWY 202/31 N
FLEMINGTON, NJ
908-788-5700
jamestoyotascion.com

Transportation

Autos For Sale 1385

SAAB 9.3 SE 2001
CONVERTIBLE, 5SPD, A/C, CD, PW, PL, LEATHER, 61,777 MI, VIN# 17005181
\$13,995
James TOYOTA
172 HWY 202/31 N
FLEMINGTON, NJ
908-788-5700
jamestoyotascion.com

SAAB 9.3 SE 2003
CONVERTIBLE, AUTO, PW, PL, A/C, CD, LEATHER, 38,341 MI, VIN# 37003800
\$21,795
James TOYOTA
172 HWY 202/31 N
FLEMINGTON, NJ
908-788-5700
jamestoyotascion.com

SAAB 9.5 ARC 2005
LEATHER, A/C, CD, PW, PL, 26,783 MI, VIN# 53524923
\$24,895
James TOYOTA
172 HWY 202/31 N
FLEMINGTON, NJ
908-788-5700
jamestoyotascion.com

SAAB 9.5 ARC 2005
LEATHER, A/C, CD, PW, PL, 26,783 MI, VIN# 53524923
\$24,895
James TOYOTA
172 HWY 202/31 N
FLEMINGTON, NJ
908-788-5700
jamestoyotascion.com

SAAB 9.5 ARC 2005
LEATHER, A/C, CD, PW, PL, 26,783 MI, VIN# 53524923
\$24,895
James TOYOTA
172 HWY 202/31 N
FLEMINGTON, NJ
908-788-5700
jamestoyotascion.com

SAAB 9.5 ARC 2005
LEATHER, A/C, CD, PW, PL, 26,783 MI, VIN# 53524923
\$24,895
James TOYOTA
172 HWY 202/31 N
FLEMINGTON, NJ
908-788-5700
jamestoyotascion.com

SAAB 9.5 ARC 2005
LEATHER, A/C, CD, PW, PL, 26,783 MI, VIN# 53524923
\$24,895
James TOYOTA
172 HWY 202/31 N
FLEMINGTON, NJ
908-788-5700
jamestoyotascion.com

SAAB 9.5 ARC 2005
LEATHER, A/C, CD, PW, PL, 26,783 MI, VIN# 53524923
\$24,895
James TOYOTA
172 HWY 202/31 N
FLEMINGTON, NJ
908-788-5700
jamestoyotascion.com

SAAB 9.5 ARC 2005
LEATHER, A/C, CD, PW, PL, 26,783 MI, VIN# 53524923
\$24,895
James TOYOTA
172 HWY 202/31 N
FLEMINGTON, NJ
908-788-5700
jamestoyotascion.com

SAAB 9.5 ARC 2005
LEATHER, A/C, CD, PW, PL, 26,783 MI, VIN# 53524923
\$24,895
James TOYOTA
172 HWY 202/31 N
FLEMINGTON, NJ
908-788-5700
jamestoyotascion.com

SAAB 9.5 ARC 2005
LEATHER, A/C, CD, PW, PL, 26,783 MI, VIN# 53524923
\$24,895
James TOYOTA
172 HWY 202/31 N
FLEMINGTON, NJ
908-788-5700
jamestoyotascion.com

SAAB 9.5 ARC 2005
LEATHER, A/C, CD, PW, PL, 26,783 MI, VIN# 53524923
\$24,895
James TOYOTA
172 HWY 202/31 N
FLEMINGTON, NJ
908-788-5700
jamestoyotascion.com

SAAB 9.5 ARC 2005
LEATHER, A/C, CD, PW, PL, 26,783 MI, VIN# 53524923
\$24,895
James TOYOTA
172 HWY 202/31 N
FLEMINGTON, NJ
908-788-5700
jamestoyotascion.com

Transportation

Autos For Sale 1385

SATURN Station Wagon 1995
AUTO, 122,249 MI, STOCK# 70858B, VIN# S2288795
\$2,995
James TOYOTA
172 HWY 202/31 N
FLEMINGTON, NJ
908-788-5700
jamestoyotascion.com

SATURN FORESTER 2.5XS 2005
AUTO, PW, PL, PS, PB, TILT, CRUISE, A/C, 38,590 MILES, VIN# 5H744075
\$17,995
James TOYOTA
172 HWY 202/31 N
FLEMINGTON, NJ
908-788-5700
jamestoyotascion.com

SATURN OUTBACK 2002
AWD, 4CYL, AUTO, CD, STOCK# CD7896, VIN# 27655696
\$11,950
WYMAN
1713 Springfield Ave
MAPLEWOOD, NJ
973-761-6000
www.wymanford.com

SATURN OUTBACK 2004
4DR, WAGON, WHITE, 28,561 MILES, STOCK# 70535, VIN# 47602281
\$16,995
James TOYOTA
172 HWY 202/31 N
FLEMINGTON, NJ
908-788-5700
jamestoyotascion.com

SATURN OUTBACK 2004
4DR, WAGON, WHITE, 28,561 MILES, STOCK# 70535, VIN# 47602281
\$16,995
James TOYOTA
172 HWY 202/31 N
FLEMINGTON, NJ
908-788-5700
jamestoyotascion.com

SATURN OUTBACK 2004
4DR, WAGON, WHITE, 28,561 MILES, STOCK# 70535, VIN# 47602281
\$16,995
James TOYOTA
172 HWY 202/31 N
FLEMINGTON, NJ
908-788-5700
jamestoyotascion.com

SATURN OUTBACK 2004
4DR, WAGON, WHITE, 28,561 MILES, STOCK# 70535, VIN# 47602281
\$16,995
James TOYOTA
172 HWY 202/31 N
FLEMINGTON, NJ
908-788-5700
jamestoyotascion.com

SATURN OUTBACK 2004
4DR, WAGON, WHITE, 28,561 MILES, STOCK# 70535, VIN# 47602281
\$16,995
James TOYOTA
172 HWY 202/31 N
FLEMINGTON, NJ
908-788-5700
jamestoyotascion.com

SATURN OUTBACK 2004
4DR, WAGON, WHITE, 28,561 MILES, STOCK# 70535, VIN# 47602281
\$16,995
James TOYOTA
172 HWY 202/31 N
FLEMINGTON, NJ
908-788-5700
jamestoyotascion.com

SATURN OUTBACK 2004
4DR, WAGON, WHITE, 28,561 MILES, STOCK# 70535, VIN# 47602281
\$16,995
James TOYOTA
172 HWY 202/31 N
FLEMINGTON, NJ
908-788-5700
jamestoyotascion.com

SATURN OUTBACK 2004
4DR, WAGON, WHITE, 28,561 MILES, STOCK# 70535, VIN# 47602281
\$16,995
James TOYOTA
172 HWY 202/31 N
FLEMINGTON, NJ
908-788-5700
jamestoyotascion.com

SATURN OUTBACK 2004
4DR, WAGON, WHITE, 28,561 MILES, STOCK# 70535, VIN# 47602281
\$16,995
James TOYOTA
172 HWY 202/31 N
FLEMINGTON, NJ
908-788-5700
jamestoyotascion.com

SATURN OUTBACK 2004
4DR, WAGON, WHITE, 28,561 MILES, STOCK# 70535, VIN# 47602281
\$16,995
James TOYOTA
172 HWY 202/31 N
FLEMINGTON, NJ
908-788-5700
jamestoyotascion.com

Transportation

Autos For Sale 1385

SUBARU OUTBACK LL BEAN 2002
4CYL, AUTO, 60,348 MILES, S STOCK# 70915A, VIN# 27637947
\$14,995
James TOYOTA
172 HWY 202/31 N
FLEMINGTON, NJ
908-788-5700
jamestoyotascion.com

SUBARU FORESTER 2.5XS 2005
AUTO, PW, PL, PS, PB, TILT, CRUISE, A/C, 38,590 MILES, VIN# 5H744075
\$17,995
James TOYOTA
172 HWY 202/31 N
FLEMINGTON, NJ
908-788-5700
jamestoyotascion.com

SUBARU OUTBACK 2002
AWD, 4CYL, AUTO, CD, STOCK# CD7896, VIN# 27655696
\$11,950
WYMAN
1713 Springfield Ave
MAPLEWOOD, NJ
973-761-6000
www.wymanford.com

SUBARU OUTBACK 2004
4DR, WAGON, WHITE, 28,561 MILES, STOCK# 70535, VIN# 47602281
\$16,995
James TOYOTA
172 HWY 202/31 N
FLEMINGTON, NJ
908-788-5700
jamestoyotascion.com

SUBARU OUTBACK 2004
4DR, WAGON, WHITE, 28,561 MILES, STOCK# 70535, VIN# 47602281
\$16,995
James TOYOTA
172 HWY 202/31 N
FLEMINGTON, NJ
908-788-5700
jamestoyotascion.com

SUBARU OUTBACK 2004
4DR, WAGON, WHITE, 28,561 MILES, STOCK# 70535, VIN# 47602281
\$16,995
James TOYOTA
172 HWY 202/31 N
FLEMINGTON, NJ
908-788-5700
jamestoyotascion.com

SUBARU OUTBACK 2004
4DR, WAGON, WHITE, 28,561 MILES, STOCK# 70535, VIN# 47602281
\$16,995
James TOYOTA
172 HWY 202/31 N
FLEMINGTON, NJ
908-788-5700
jamestoyotascion.com

SUBARU OUTBACK 2004
4DR, WAGON, WHITE, 28,561 MILES, STOCK# 70535, VIN# 47602281
\$16,995
James TOYOTA
172 HWY 202/31 N
FLEMINGTON, NJ
908-788-5700
jamestoyotascion.com

SUBARU OUTBACK 2004
4DR, WAGON, WHITE, 28,561 MILES, STOCK# 70535, VIN# 47602281
\$16,995
James TOYOTA
172 HWY 202/31 N
FLEMINGTON, NJ
908-788-5700
jamestoyotascion.com

SUBARU OUTBACK 2004
4DR, WAGON, WHITE, 28,561 MILES, STOCK# 70535, VIN# 47602281
\$16,995
James TOYOTA
172 HWY 202/31 N
FLEMINGTON, NJ
908-788-5700
jamestoyotascion.com

SUBARU OUTBACK 2004
4DR, WAGON, WHITE, 28,561 MILES, STOCK# 70535, VIN# 47602281
\$16,9