

The Chronicle

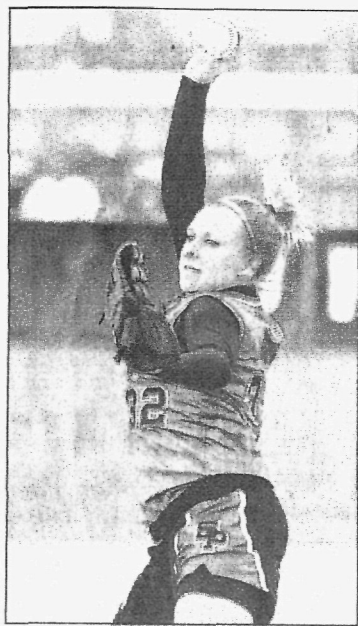
Since 1862

Vol. 144,

*****CAR-RT LOT**C013
S PLAINFLD PUB LIBRY/2'
2484 PLAINFIELD AVE
S. PLAINFIELD NJ 07080-3531

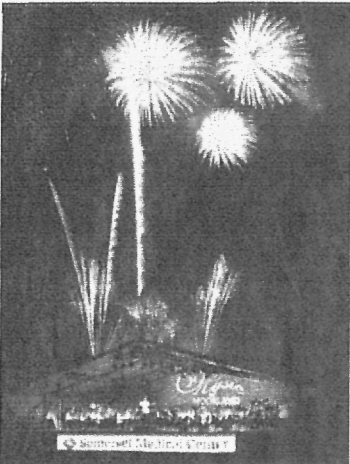
Saturday, June 18, 2005

50 cents



Perfect Pitch

Jessica Senz pitched the South Plainfield High softball squad to the state Group III title Saturday in a 3-0 victory over Northern Burlington. **Page B1.**



Get Ready For Music

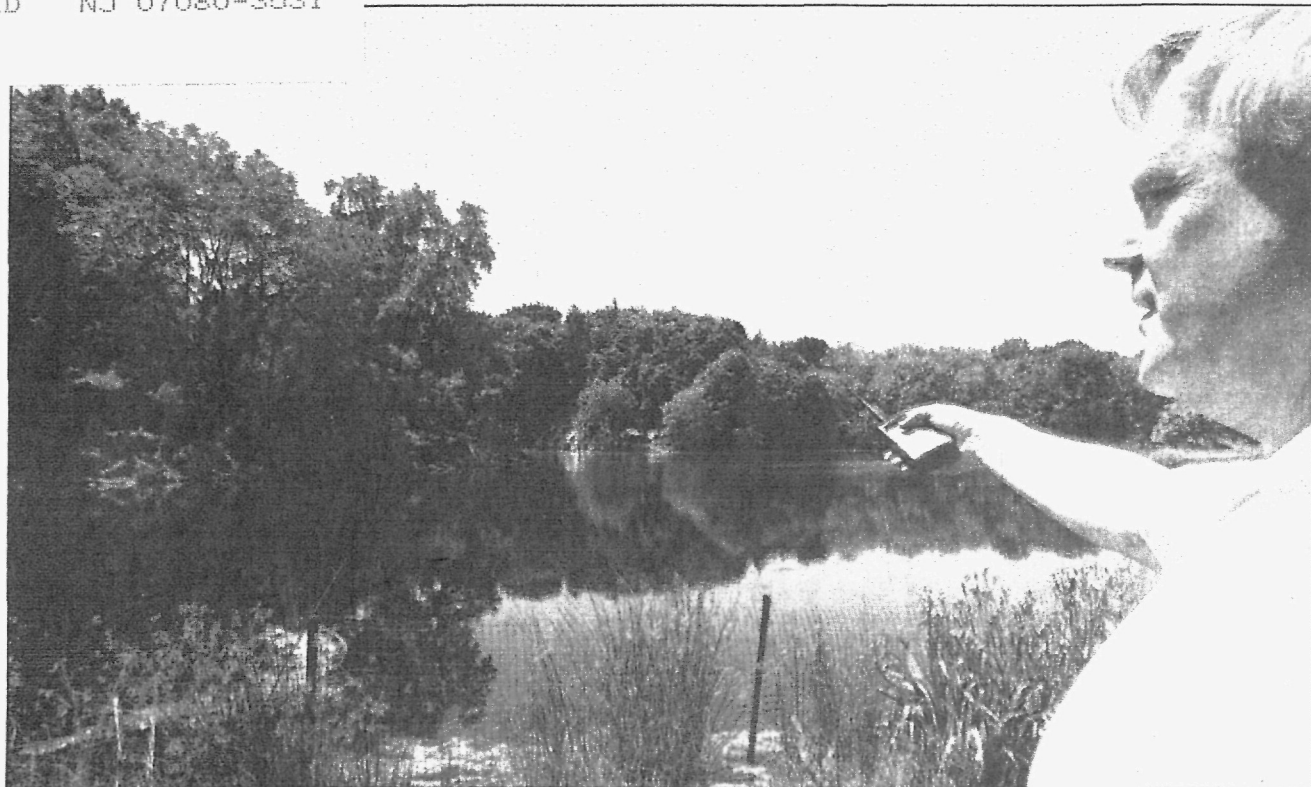
Music at Moorland is making its annual return to Far Hills June 23. The New Jersey Symphony and the fireworks of Grucci highlight the evening, which benefits Somerset Medical Center. **Pages B2.**

How to Help OPSHBX

Operation: Shoebox New Jersey 2005, in partnership with American Recreational Military Services is seeking cash donations in support of their ongoing effort to supply American forces overseas with a steady supply of personal items, toiletries and snacks. ARMS is a registered 501(c)(3) non-profit organization under the Internal Revenue Service code. All contributions are tax-deductible. All contributions are dedicated to the purchase of supplies and costs of shipping. ARMS/Operation: Shoebox New Jersey 2005 is an all-volunteer operation. Depending on weight, it costs between \$8 and \$15 to ship each box overseas. Checks should be made out to ARMS, with the instructions "Operation Shoebox NJ 2005" written on the memo line. Checks should be mailed to: Operation: Shoebox New Jersey 2005, c/o The Chronicle, 44 Veterans Memorial Drive East, Somerville, N.J. 08876. For more on Operation Shoebox, see **Page A5.**

INDEX

Commentary	A4,5
Community Life.....	A8
Sports	B1
Weekend Plus	B2
Obituaries.....	A7
County News	A3



Above, Timothy Taylor, executive director of the Duke Farms Foundation, transmits a signal from his hand-held remote control to a solar-powered antenna, which signals the opening of the reservoir valves to start the flow of water over the waterfalls. **Below,** water released from the reservoir floods two small pools, which begin to trickle as they overflow before the volume of water begins rushing over a wall of rocks and boulders into a lower lake.

PHOTOS BY GEORGE PACCIOLLO/STAFF PHOTOGRAPHER

Vintage waterworks network continues to nurture Duke Farms lakes, fountains

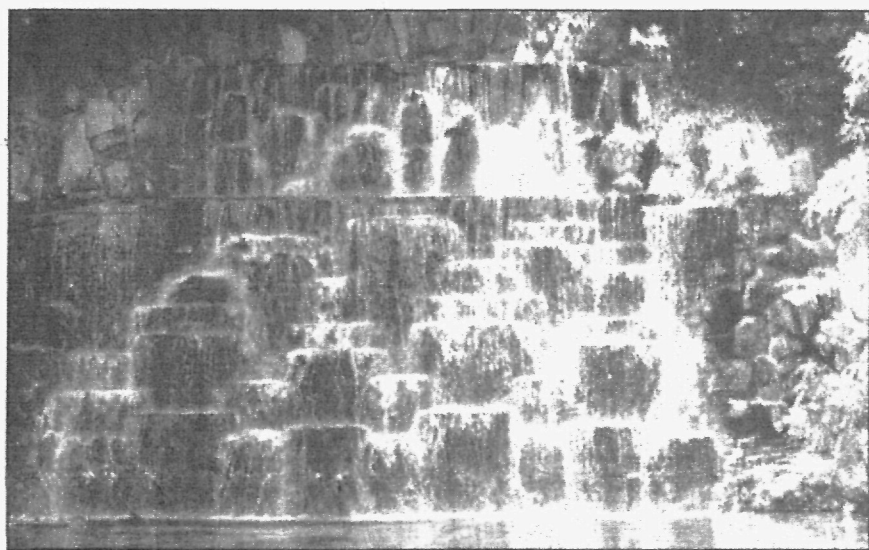
By AMY S. BOBROWSKI
Staff Writer

HILLSBOROUGH — With 10 lakes — nine of them manmade — stocked with fish and wildlife, 35 fountains, an electric waterfall and several wells, water is the lifeblood of Duke Farms, one of the largest expanses of privately-owned land in Somerset County.

When the Duke's family tobacco company was dissolved in 1911, James Buchanan ("Buck") Duke made his second fortune cashing in on hydroelectric power, harnessing the water from the Raritan River.

Duke bought up land — now known as Duke Farms — in the early 1900s in parts of Hillsborough and Somerville intending to take advantage of one of the Northeast's untapped natural resources: the hydro power potential of the Raritan River.

Duke hired Civil Engineer James Greenleaf, who had worked with Fredrick Law Olmstead in designing Central Park, to help him transform his land into a water-powered property. The 2,730-acre Duke Farms is bordered on the north by the river,



which after Duke bought the Raritan Water Power Company in 1901, became the power source for the entire estate.

After a dam was built, water from the river flowed through the 1909 castle-like filter house built on Orlando Drive and Nevius Street, where it continues to be pumped

through eight large sand filters, through the Power House and eventually into a man-made 2 million gallon capacity reservoir which feeds the property's nine man-made lakes; in Duke's time, this elaborate system also powered nearly 35 fountains on

Continued on page A2

Nurse is honored for taking the time to care

By ALLISON ELYSE GUALTIERI
Staff Writer

SOMERVILLE — Registered nurse Marie Abate tries to make every patient she sees feel safe and special. She seems to be succeeding: the Somerville resident was singled out as Nurse of the Year at Somerset Medical Center for her customer service and excellence in practice, an award for which her peers nominated her.

Each day, Abate meets with current and prospective patients at the Family Practice Center, and primarily deals with young and underserved populations.

"Sometimes, that's quite a challenge, as there is a significant non-English speaking population," she said, a population that includes some teenagers. "It's a lot different from a 29-year-old that's trying to become pregnant."

She spends much time ensuring that many of her patients get to their scheduled appoint-

ments and get the prenatal care they need, from calling and reminding them to going so far as to arrange for a taxi.

Sometimes, she said, it is difficult to get in contact with patients, as many families will share a cell phone and Abate isn't sure her patients always get her messages.

She checks and measures each patient, counsels them, does blood work and schedules tests. She also does patient education, teaching new mothers how to breastfeed and take their babies' temperatures, a part of her job she says she enjoys greatly.

"The patients are so grateful and thankful for the littlest thing," she said. "I feel happy that I can be a part of it."

Abate, who is the Family Practice Maternity Nurse Coordinator, has been with the hospital for seven and a half years. Before becoming a

Continued on page A2

Golf group hosting tournament

SOUTH PLAINFIELD — The South Plainfield Golf Association has announced that this year's South Plainfield Open will be held Aug. 3 at Gambler Ridge Golf Club.

This is the 11th annual golf tournament held for the benefit of the South Plainfield High School Golf Team. The tournament this year will be a scramble format.

The entry fee of \$85 includes greens fees, golf cart, prizes, food and beverages. Once again we have been able to keep the entry fee at the same amount. Check-in is at 11 a.m. Lunch will be provided from noon to 1 p.m. There is a shotgun start at 1 p.m. Dinner and awards will be from 6-8 p.m.

Food and beverages will be provided throughout the tournament.

Prizes will be awarded for Low Team Score, Longest Drive, Closest to the Pin, Closest to the Line, and a special hole-in-one prize.

Registration and payment is due by July 18.

Players are encouraged to sign up early to secure a place in the tournament before all available slots are filled. Players can register for the tournament on-line at the Association's Web site — www.spga.org — or print out and mail their entry forms.

Corporate sponsorships are available. All proceeds from the event go to support the activities of the South Plainfield High School Golf Team as well as the South Plainfield Golf Association's college scholarship program. Each Platinum Sponsorship includes this year's tournament entry fees for one foursome. Gold, Silver, Bronze, Hospitality and Beverage sponsorships are also available. Sponsorship information is also available on the Web site.

For more information about the tournament, sponsorships and entry forms, contact Dick DeAndrea at (908) 755-1700, Mike Kavka at (908) 753-6578 or visit the Web site.

County purchases trailhead property

METUCHEN — The borough and Middlesex County have purchased a 2.68 acre parcel of land that will serve as the trailhead to the Middlesex County Greenway.

The site, at the corner of Middlesex Avenue and Memorial Parkway, represents one of the last remaining open parcels of land in the borough.

"Today, let us celebrate the partnership between the county and the Borough of Metuchen. By working together and using both of our resources, we were able to preserve and put to good use this prime land that was destined to be a commercial site," said Freeholder Director Crabel, during a recent ceremony marking the acquisition.

Borough Mayor Edmund O'Brien thanked Crabel and the Freeholder Board for helping the borough purchase the land: "Three acres of Open Space in Metuchen is almost unheard of."

"The people of Metuchen and of the county will experience a great recreational asset because of this purchase."

The freeholders authorized the use of \$1.25 million from the county's Open Space and Recreation and Farmland and Historic Preservation Trust Fund for the purchase. Metuchen contributed \$100,000.

"The co-purchase of this land took a long time to complete, but I believe everyone who has worked on it will agree, it was well worth the wait," Crabel said.

The parcel is contiguous to the Middlesex County Greenway, a 3.5 mile-long path along an abandoned railroad right of way.

The path has been popular with joggers and walkers for years and is part of the East Coast Greenway, which stretches from Maine to Florida.

O'Brien said he expects to see streams of people walking and biking along the former railway in the near future as safety and accessibility improvements are made.

"The freeholders have embraced the rails-to-trails idea and this is a model for it."

The trailhead property purchased will improve access to and become a major entry point for the County Greenway.

Flying the flag



Do you know where this flag is? The Reporter is sponsoring a contest that features flags from around Somerset County. So, do you think you know where this flag is being flown in the county? For more flags and complete contest details, **Page A6.**

Nurse is honored for taking the time to care

Continued from page A1

maternity nurse, she spent 15 years as an emergency room nurse at St. Peter's Hospital and some time in clinical research at the University of Medicine and Dentistry of New Jersey, which she said she found fascinating.

After the emergency room experience, where Abate got

to help treat patients with a wide variety of ailments, she said she was worried that working in maternity wouldn't be as diverse.

"The scope of care is larger," she said of the Family Practice Center, "I realized that it's not the same thing every day."

Abate said sometimes patients come in for the first time just a few weeks before

the baby is due.

Despite the challenges, Abate said that she loves her job, in part because of the support she gets from her bosses, Dr. John Bucek and Dr. Margaret Guyton.

"They make it possible for me to try new things," said Abate. She said they have let her experiment with different program ideas and different ways of doing things, and have been very supportive of her efforts.

Ultimately, for Abate, it's about helping her patients, who trust her and are very comfortable with her, often sending her pictures of their children.

"I know they want the best care for their babies," she said.

**DON'T REPLACE YOUR OLD BATHTUB...
REGLAZE IT! \$279**
We also do Sinks, Tile, Tub Surrounds & Color
Travel Charge May Apply
Now serving Southern, NJ
www.easternrefinishing.com
EASTERN REFINISHING CO. • 800-463-1879
COUPON EXPIRES 6/22/05

Martin's Furniture
**Huge Clearance Sale
1 Week Only!!!**
Over 100 Living Rooms Over 60 Bedrooms Over 40 Dining Rooms
**"Our Warehouse is FULL!"
Must Make Room For New Merchandise
Discounts of 45% OFF on All Floor Models**
Martin's Furniture
Over 60 Dinettes
432 Route 31 Washington, NJ
908-537-0075
Sat., Mon. Tues.: 10-6; Thurs., Fri.: 10-9
Sun. 12-5; Closed Weds
350 Route 22 Green Brook, NJ
732-356-8388
Mon.-Fri: 10-9; Sat.: 10-6; Sun 12-5
Curtis & Entertainment Center

life is looking good
an american classic
we've still got 'em!
Passbook Savings Account¹
- easy record-keeping
- competitive rates/APYs
- easy to open
- safe, simple, comfortable
- perfect for savers of all ages
Saving...just the way you like it!
Let's face it, new technology and online banking isn't for everyone. At The Provident Bank we know many people still prefer a passbook savings account for easy record-keeping and convenience. Many banks no longer offer passbooks - but we've still got them! You'll get the passbook you want with a competitive interest rate/APY (higher than most banks offer on standard savings accounts) to grow your hard-earned money. We even offer a passbook savings account for young savers that can be opened with as little as \$1. How you save is up to you at Provident!
Call us at 1-800-448-PROV or visit any Provident Bank office to open your passbook savings account today! Ask for details.
PROVIDENT BANK
Hassle-free banking for busy people.SM
¹ Minimum \$50 to open account. \$200 minimum average daily balance to avoid monthly penalty fee. * Must be under 18 years of age to open and maintain account free of service charges.

Vintage waterworks network continues to nurture Duke Farms lakes, fountains

Continued from page A1

the estate.

Today, the lakes are home to the thousands of snapping turtles, some of which are probably nearing 50 years of age.

With a catch-and-release policy, the lakes at the estate remain well stocked with bass, catfish and sunfish.

"If we had a fishing line and we threw it in, we'd have a fish within five minutes," said Timothy Taylor, executive director of the Duke Farms Foundation.

In an effort to re-create a natural wildlife habitat across the woodlands, meadows and lakes on the property, the emphasis the past several years has shifted to the ecology; maintenance of the fountains has been given a lower priority.

"It's a large ongoing debate on how much emphasis we should put toward that," said Taylor. "Yet the maintenance has been deferred for so long now, that it would be a capital improvement effort to repair most of them."

Concrete fountains, like the Saucer Fountain which is near a foundation of a man-

sion that was never built, are cracked; crystallized materials flowing out of the cracks give the impression of dripping water.

Other fountains made out of rock boulders imported from Hunterdon County and eastern Pennsylvania look like giant rock island formations in the middle of the lakes. One of the fountains still functioning is in the Pineapple Pool; with its jutting, large angled stones, it looks like a pineapple with the flowing water from the top its leaves.

Duke's daughter, Doris Duke, who inherited the estate from her father after his death in 1925, was an avid swimmer. She remodeled the Mermaid Pool in the 1930s to transform it into her swimming pool. She added a ladder and excavated an area near the banks to allow her to dive off one of the rocks. In a picturesque scene, "water flows from the reservoir, down a waterfall to the Mermaid Pool and then down another waterfall to a lower lake (the Pineapple Pool)," reads a description on the Duke Farms website.

The Garden Fountain, which can be found in front of the Display Gardens and near the visitor center, features seven plumes of vertical water. But don't toss your pennies in there, said Taylor, as the Duke staff tries to keep this high-profile fountain free of coins and other debris.

The Duke Farms staff shies away from using chemicals to clean the lake water. Instead they'll put bales of barley straw near the banks. As the barley breaks down it creates a chemical very much like hydrogen peroxide which helps to keep algae under control.

Perhaps one of the most interesting waterworks on the estate is an electric waterfall. With the push of a button, Taylor transmits a signal from his hand-held remote control to a solar-powered antenna, which signals the opening of the reservoir valves. Water from the reservoir floods two small pools, which begin to trickle as they overflow before the volume of water begins rushing over a wall of rocks and boulders into a lower lake. The falls are on an electric system, said Taylor, in order to allow for energy conservation.

Today, the water from the Raritan River and the reservoir still fill the lakes, but the fountains, the few that are still in use, are on a closed system with the same water continuously flowing through the pipes.

FREE Tee Time Service!
TEE TIME KING
New Jersey's Golf Authority
Over 100 Golf Courses
Online at www.teetimeking.com
or Toll Free 877-KING-123

**Trust Your Eyes
To Doctors Who Care**
Celebrating 25 years of community service
Spanish Spoken
Call for your
**FREE LASIK
or PRELEX EVALUATION**
SANTAMARIA
EYE CENTER
Jaime Santamaria, II, M.D., F.A.C.S.
Laila Machado Colicchio, O.D.
Kenneth N. Darvin, M.D.
Fahara Mawani, O.D.
100 Menlo Park, Ste 408 Edison, NJ 08837 (732) 767-1850
104 Market St. Perth Amboy, NJ 08861 (732) 826-5159

The Chronicle

Since 1882

A Penn Jersey Advance, Inc. newspaper
NJN Publishing © 2003

The Chronicle (U.S.P.S. 061-800) ISSN 1047-3351 is published Saturday by NJN Publishing, 44 Veterans Memorial Drive East, Somerville, N.J. 08876. 908-575-6660. Periodicals postage paid at Somerville and additional mailing offices. POSTMASTER: Send address changes to NJN Publishing, Fulfillment Office, P.O. Box 659 Somerville, NJ 08876.

Subscription rates per year: \$28 in Somerset & Middlesex County; \$33 in NJ; \$36 out of state. To subscribe call 1-800-300-9321.

SOMERSET PATRIOTS
FAN OF THE WEEK!
Ed Smith
Ed is the Library Director for the Manville Library. He lives in Manasquan, NJ with his wife Kathy, to whom he has been married for 13 years. He enjoys pitching in a softball league in Clifton and coming out to Patriots baseball games.
Sponsored By
Flemington CAR & TRUCK COUNTRY
Family Of Dealerships
Rts. 202 & 31
or at: flemington.com
©2005 F&B Inc.
Get Patriotic!

Studio helps 'space explorers'

HIGHLAND PARK — The sky will no longer be the limit when a group of art students in Central New Jersey take Leonardo da Vinci's dream of flight far beyond the clouds. That's because this summer they'll shuttle art materials to the very edge of space.

Art students at the Academy of Art of Highland Park will track their star-bound art media, flying inside tiny, hand-made satellites that the pupils design, build and load themselves. The studio work begins

Tuesday and runs through Sept. 1.

These homemade satellites are "PongSats" as they are made out of Ping-Pong Balls. After the satellites are launched the students will follow the payload's descent back to earth as it lands in the Nevada desert. Once the payload is retrieved, the young artists will use it to make art.

"We're now wondering whether this is the very first time in history that art will be made with space-bound materi-

als," said Ana Soto-Canino, a classically trained artist and former sport pilot who initiated the partnership between an art studio on the East Coast and an aerospace corporation out West.

"Charcoal, for example, is a popular art medium today but it is prehistoric, already in use by cave dwellers," she said. "Now we're sending charcoal off to the highest heights, to the very edge of imagination."

Soto-Canino points out the ironic twist to the whole affair; whereas the collaboration of an

aerospace corporation and art studio seems like a radically new idea, "it really is a 'back to the future' event," she said.

"The mind of Leonardo da Vinci and other old masters of the Florentine Renaissance gave rise to empirical observation and experimentation based on sensory experience," she said. "This became the foundation of both modern art and science. For more information on the academy, visit www.academ-yartnj.com or call (732) 777-2085.

Pantry program seeking donations

MCFOODS is asking area corporations and organizations to help increase its non-perishable food stock as need increases.

The name is an acronym for Middlesex County Food Organization and Outreach Distribution Services. This centralized food collection service distributes goods to more than 60 food pantries throughout the county, ensuring that residents in need in every municipality have access to food.

"The need for emergency food increases in the summer because children are no

longer getting breakfast and lunch in school," said Freeholder Blanka B. Valenti, liaison to MCFOODS. "We are asking corporations and individual residents to hold food drives or other events, or make individual contributions so we can provide food and personal items to those in need."

"Many of our area corporations and organizations have been extremely supportive in the past and we look forward to working with them again," she said.

Community or youth organizations may want to sponsor a

food drive by collecting food at a local grocery store. This has proven to be a very successful way of collecting donations. Group members give out program fliers to shoppers as they enter the store, and as they exit, shoppers drop off their just-purchased donation.

The next large-scale food drive is scheduled for October.

Among the items most needed are canned fruit; canned meat; canned vegetables; macaroni and cheese; peanut butter; canned tuna; brown rice; crackers; cookies; soap; shampoo; toothpaste; deodorant; diapers; and wipes.

Individuals who cannot hold a food drive are reminded that food donations are accepted year-round at public libraries in Edison, Milltown, Monroe, North Brunswick, Plainsboro, South Brunswick, Spotswood and Woodbridge.

Food and nonperishable necessities are collected at all performances held by Plays-in-the-Park, the summer theater series at Roosevelt Park in Edison.

MCFOODS also accepts grocery store gift certificates.

For more information, call Jennifer Apostol at (732) 729-0880 or (609) 409-5033.

ROOFING

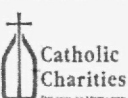
Cape Cod	\$2,500	\$100 Off Any Roofing Job
Bi-Level	\$2,700	
Split Level	\$2,900	

CARLSON BROS. 908-272-1266

Foster Parents NEEDED!

Watch a child grow before your eyes. By becoming a Therapeutic Foster Parent, you will be giving a child in need a chance to grow to be the best they can be. Our children, newborn and ages 5 to 18, are boys and girls of many religions, nationalities and backgrounds who need a safe, temporary home.

If interested, please contact **1-866-247-HOME (4663)**



Silver Creek Landscaping
SOUTH PLAINFIELD
LANDSCAPING AT AFFORDABLE PRICES

- LANDSCAPE PLANTINGS
- HYDRO SEEDING & SOD
- MULCH / STONE / TOPSOIL
- RETAINING WALLS
- BRICK PAVERS - PATIOS & WALKS
- RESIDENTIAL & COMMERCIAL
- FREE ESTIMATES

908-756-7272

MIDDLESEX ARMY • NAVY

The only place to shop for work clothes, boots and jeans!

315 Bound Brook Rd., Middlesex
732-968-2848

DONATE A CAR

Support NJ Animal Rescue

Tax Deductible
1-800-293-7490

Tax Forms & Receipts Produced

FREE Pick-up within 24 hours

Email info@autosalvation.com • www.autosalvation.com

Summer Course
Register Now

New Jersey School of Ballet
Ballet • Jazz • Tap

CLASSES FOR ALL AGES AND LEVELS
Open Classes & Intensive Program

Somerville
Morristown • Livingston
973-597-9600 or 908-526-2248

NURSERY • GARDEN • STONE • LANDSCAPE CENTER
Complete Landscaping Services

- Patios
- Driveways
- Walkways
- Retaining Systems
- Custom Plantings
- Drainage Systems

Family Owned and Operated for over 30 Years.
Guaranteed Workmanship

FOUR SEASONS NURSERY
STONE & LANDSCAPE CENTER

Visit Our New South Plainfield Location
(Formerly Moore's Stone & Garden Center)
430 Hamilton Blvd., South Plainfield

Nursery 908-757-4646 Construction 908-272-5422
ONE STOP CALL FOR ALL YOUR NEEDS • NOW OPEN 7 DAYS A WEEK

BULK SALES: Top Soil, Mulch, Stone
All Landscape Materials
Delivery Available

Why do smart kids fail?

- No Motivation
- Lack of Confidence
- Frustration with School
- Weak Basic Skills

If your child has struggled with schoolwork this year, take action now to make his or her grades better. **Huntington Learning Center** can help. Our certified teachers can pinpoint your child's strengths and weaknesses and tailor a program of instruction to meet his or her needs. Just a few hours a week can improve your child's skills, confidence, and motivation. Call Huntington today. Your child can learn.

PREP FOR THE NEW SAT NOW AVAILABLE

Huntington Learning Center 1-800-CAN LEARN

Bridgewater 908-725-3800	Livingston 973-944-2900	Springfield 973-258-0100
East Brunswick 732-257-7500	Manalapan 732-341-5100	West Long Branch 732-935-1131
Edison 732-906-0900	Middletown 973-971-0200	
Ledgewood 973-252-8300	Morristown 973-292-0500	

Pelican's

FACTORY REPS ON SITE FOR THIS SALE

FACTORY DIRECT PRICING!!

The Best Spas Made! 100's In Stock!

Home Recapt Living...
12 Months NO Payments NO Interest

FREE DELIVERY

Spas • Grills • Gazebos
Available For Immediate Delivery!

LIFETIME HEATER GUARANTEE
NO-PRORATED WARRANTIES
SERVICE DEPARTMENT ON PREMISES
NEXT DAY DELIVERY

TRUCKLOAD POOL SALE
SAVE 100'S OF DOLLARS ON LEFTOVER/DISCONTINUED ABOVE GROUND POOL

Some Examples...	Reg.	SALE
21x48 - Gray	...\$899	...\$799
18x48 - Tan	...\$799	...\$699
18x52 - Gray w/55 Panel	...\$1299	...\$899
15x52 - Gray w/55 Panel	...\$1199	...\$699

While Supplies Last!
Hurry In For Best Selection!

TRUCKLOAD PATIO FURNITURE SALE
30% OFF All In Stock Cast Classics PATIO FURNITURE

Pelican Pool, Patio & Spa Shops
Whitehouse, NJ 908-534-2534

Visit Our Website for Valuable Discount Coupons!
pelicanpool.com

THE LOWEST PRICES IN NEW JERSEY!!

Saturday, June 18, 2005

Opinion

Protecting a woman's right to health and safety

By PLANNED PARENTHOOD AFFILIATES OF NEW JERSEY

It's happened in Texas, Wisconsin, Virginia, and many other states. It might even be happening here in New Jersey. Throughout the country, some pharmacists are refusing to dispense valid, safe prescriptions for women based not on the health or safety of women, but on a pharmacist's personal beliefs.

Specifically, documented cases have shown pharmacists refusing to fill prescriptions for birth control and emergency contraception (a form of birth control that must be taken within 120 hours of unprotected intercourse).

In one of the more disturbing cases, a rape survivor in Texas obtained a prescription for emergency contraception from a hospital. After she visited two pharmacies that did not have the birth control in stock, she went to a third pharmacy where the three pharmacists on duty refused to fill her prescription, citing personal beliefs.

In Wisconsin, a woman tried to refill her prescription for oral contraceptives and was not only refused, but the pharmacist would not transfer her prescription to another pharmacy.

In a recent Star-Ledger article, the spokeswoman for New Jersey Right to Life claims that there are a number of pharmacists in New Jersey who are refusing to fill prescriptions for emergency contraception. Women in New Jersey should know that the healthcare decisions they have made in consultation with their doctors could be trumped by the beliefs of the pharmacist on duty at their local drugstore.

New Jersey legislators ought to take action before any more women are refused access to their valid prescriptions. We applaud legislation introduced by Senators Fred Madden (D-4) and Joe Vitale (D-19), as well as Assembly members Linda Stender (D-22), Robert Smith (D-4), Neil Cohen (D-20), and Jerry Green (D-22), which would prohibit pharmacists from refusing to dispense a prescription based solely on philosophical, moral, or religious grounds.

This legislation is necessary to prevent the dangerous trend of pharmacist refusals from gaining traction in New Jersey. Denying women access to birth control prescribed by their doctors because of philosophical, moral, or religious beliefs is an outrageous act of discrimination against women and places a severe burden on women practicing valid healthcare options.

We firmly believe that all people have a right to their own opinions and moral beliefs; however, it is unethical for healthcare providers to stand in the way of women's access to safe, legal, and effective healthcare. A pharmacist's personal beliefs should not take precedence

over the healthcare decisions of customers and their doctors.

Contraception prevents unintended pregnancies and reduces the need for abortions. Wanted pregnancies lead to healthier pregnancies, healthier children, and healthier families. Contraception is basic health care, used by eighty-five percent of women at some point in their lives, and the benefits of the birth control pill include prevention of certain cancers, endometriosis and anemia.

Emergency contraception is a concentrated dose of birth control pills that can prevent an unintended pregnancy if taken within 120 hours of unprotected sex. Often called the "morning-after pill", emergency contraception does not cause an abortion but instead inhibits or delays ovulation; it is not effective if the woman is pregnant.

In 1997, the U.S. Food and Drug Administration approved the use of emergency contraception as safe and effective. Both the American Medical Association and the American College of Obstetricians and Gynecologists have endorsed the widespread availability of emergency contraception.

Because of the time-sensitive nature of emergency contraception, it is imperative that a woman who receives a prescription for it from her doctor is able to access the medication from a pharmacy as soon as possible.

Pharmacist refusals may force women to visit several pharmacies, which may be at distant locations, in order to receive the prescription for emergency contraception in a timely manner. This poses a significant burden on a woman seeking access to valid healthcare.

Politicians of both major political parties can agree that reducing the number of abortions in New Jersey and across the country is a laudable goal. But the rate of abortions will decrease only when women have adequate access to contraception, including emergency contraception, as well as comprehensive education about birth control.

Requiring pharmacists to dispense safe, valid contraception prescribed by a doctor is common-sense legislation that will help reduce the abortion rate by allowing women to prevent unintended pregnancies and protect the health of themselves and their families.

Decisions about childbearing should be made by a woman, in consultation with her family, her doctor, and her conscience, not by pharmacists. Let's make sure women in New Jersey are not denied their healthcare choices by pharmacists who place ideology over patients' well-being.

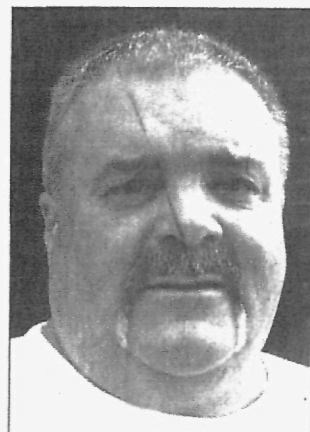
This editorial was submitted by Planned Parenthood Affiliates of New Jersey

Question of the week: Should the medical use of marijuana be permitted?



WALTER HANSEN
Bridgewater

"It's my understanding that medical marijuana is used to minimize the pain of terminally ill patients and those with glaucoma. If so, we should legalize it."



RICH BROOK
Princeton

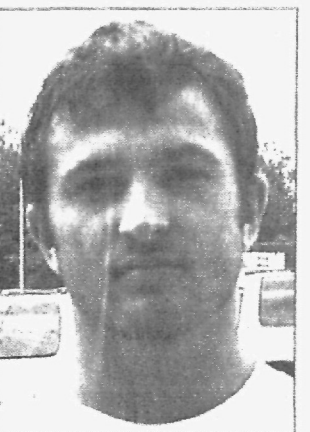
"Yes, if it helps someone who is suffering, (they) should be able to use it."



ALEXANDRO MADES
Somerville
"Sometimes."



MARIANNA BARTHA
Somerville
"That's very bad (stuff). I don't think that's a good idea."



BLAKE PETRILL
Neshanic Station
"If it can help cure someone, but not for recreation."

Letters to the Editor Social Security can continue

To the Editor:

Your recent interview with Rep. Rodney Frelinghuysen titled "Lawmaker concerned over future of Social Security," exemplifies the type of biased reporting we have been seeing on this subject.

You repeated administration assertions that Social Security will be bankrupt by the year 2042. When this debate began several months ago, President Bush alleged that Social Security would soon be "flat broke." However, even the President backed off from that assertion.

The truth is that Social Security presently has trillions of dollars invested in U.S. Government bonds, (the "trust fund").

Beginning with 2018, Social Security will start to cash in some of those bonds to cover the shortfall between the incoming FICA taxes and the outgoing monthly benefits. Without any changes, this "trust fund" will last until 2042 according to the Social Security Trustees. The non-partisan Congressional Budget Office is even more optimistic. They project that the trust fund will last until 2052.

What happens when the trust fund runs out in 2052?

There will still be sufficient income from FICA taxes at that time, under the pay-as-you-go system, to cover 75 per cent of projected benefits.

What we really need to be asking ourselves is: what type of social insurance system do we want, and is the current system worth saving. Before we answer

that question, we should take a hard look at the alternatives.

Under the current system, benefits are payable to retirees, spouses, children, widows, disabled workers, and dependent parents. Benefits are guaranteed, for life, through the payroll deductions of current workers (FICA tax). It is an insurance plan.

Private accounts, on the other hand, would be more like the 401k plans or IRAs that people are familiar with. The size of your private account would depend on the amount you could afford to deposit into it while you were working, and what type of investment you chose. It would be subject to the whims of the market. The risk is that it will not be large enough to last through your retirement, or that the monthly annuity will be very small. If it does run out, it's your problem.

It seems to me that the 6.2 per cent FICA tax, which is deducted from every worker's paycheck under the current system, is a small price to pay to guarantee lifetime retirement security for every worker in America.

What about the solvency issue, you ask? I believe we could solve that problem by eliminating the \$90,000 cap on earnings subject to the FICA tax. If all earnings from work were subject to the FICA tax, we could replenish the trust fund and make it solvent, for generations to come, without ever having to increase the actual FICA tax rate.

MARTIN C. STARK
Bridgewater

Search for cure needs more help

To The Editor:

On June 18 to the 22 we will be in Washington, DC, representing the children of Central Jersey who have type 1 diabetes at the Juvenile Diabetes Research Foundation Children's Congress 2005.

We will have a unique and empowering opportunity to help members of Congress understand what life with juvenile diabetes is like and why research to find a cure for diabetes and its complications is so critical. We will join 150 other kids from across the United States to ask our senators and congressman for their support and funding of research to help find a cure.

Our family has been living with juvenile diabetes for six years. Diabetes affects the family as a whole. It is very time consuming for everyone, difficult to manage, and emotionally trying — doubly so in our family since we both have it. If we are in the middle of a family function, we have to stop and check blood sugars or go into the bathroom to inject insulin.

If there is a low or high blood sugar reading in either or both of us, we might even have to cancel the rest of the function so our parents can take care of our "little emergency." If it falls too low, Aaron can have a seizure.

The emotional stress of this disease is horrible on our family. If one of our blood sugars is out of control it seems like everyone is holding their breath until we get it back to normal. If we misplace one of our meters, our mom gets upset and frazzled because our numbers will get messed up for the doctor.

It can be difficult because in addition to the usual responsibilities of other children, we are stressed out all the time worrying about whether or not we have everything we need relating to our diabetes. We also

worry that our brother and sister might get this disease, as well.

We live with this disease, because we do not have a choice. Like the millions of other children afflicted, we did not do anything to cause it. Our mom does not know how or why we got it because no one else in the family has ever had it. We do not like checking our blood sugar, pricking our fingers 2,000 times a year, or giving ourselves a needle with insulin over 1,100 times a year.

It is painful; sometimes we just do not feel like doing it, but it is our lifeline.

Insulin is not a cure; it just keeps us alive until a cure can be found. That is why we are going to Washington, DC. We are very supportive of finding a cure. That's what keeps us smiling and our spirits up everyday.

A cure would not only benefit us, but other children and adults with type 1 diabetes. But we do not just want a cure because this disease makes us feel miserable and tired and prevents us from doing everything we want to do. We want it for our mom, and the other moms and dads and husbands and wives who are devastated by this disease, as well. We want a cure so our mom will not have to cry so much and worry about us everyday. This burden is too heavy for a child's shoulders. We hope our stories will touch the hearts of Congress and that they give us the help we need. We hope you will help, as well.

Please, call today and ask your congressmen to support diabetes research funding. Thank you from the children of New Jersey with diabetes.

SHAYNAH AND AARON JONES

Piscataway
Both are delegates in the Mid-Jersey Chapter Juvenile Diabetes Research Foundation Children's Congress 2005

Edison losing leaders

To The Editor:

We, in Edison, are losing, through retirement, many wonderful, talented and caring educators.

This is a fact of life. These educators have done a noble job in touching children's lives and creating good contributing citizens and it is time for them to "smell the roses."

It is fitting, however, that we say a sincere thank you to

Principal Ross Capaccio — Thomas Jefferson Middle School, Shirley Ikeda — assistant superintendent, Special Services, Principal Kathy Peterson — James Madison Primary and Principal Fred Riccio — John P. Stevens High School.

GLORIA S. DITTMAN
President & CEO
Edison Chamber of Commerce

Quotable

"I feel like we skipped over the 'teenage invincibility' mentality. We realized how precious life really is."

Peter Fu

"By all accounts this project is a winner for Somerville. We have support for this project from all aspects of our borough, unanimous consent from two different borough councils, unanimous consent from our Planning Board after hearing testimony from all sides including Pathmark, support from our Architectural Review Board, support from our District Management Corporation, and most importantly support from our citizens. We have even had public support for the overall concept of redevelopment of the site from Pathmark itself."

Brian Gallagher

"The patients are so grateful and thankful for the littlest thing. I feel happy that I can be a part of it."

Marie Abate

The Chronicle

NJN Publishing © 2005
A Penn Jersey Advance, Inc. Newspaper

Publisher	David Tomasini	908-575-6731
Executive Editor	Rod Hirsch	908-575-6684
Editor	Craig Turpin	908-575-6698
Advertising Director	Robin Chandler	908-782-4747
Circulation Manager	Ted Wnoroski	908-575-6670
Production Manager	Linda Zetterberg	908-575-6710



44 Veterans Memorial Drive East, Somerville, NJ 08876

The Chronicle (U.S.P.S. 061-800) ISSN 1047-3351 is published Saturday by NJN Publishing, 44 Veterans Memorial Drive East, Somerville, NJ 08876. 908-575-6660 Periodicals postage paid at Somerville and additional mailing offices. POSTMASTER: Send address changes to NJN Publishing, Fulfillment Office, PO Box 679 Somerville, NJ 08876. Subscription rates \$28 per year in advance. \$33 out of Middlesex County and Somerset County, \$36 per year out of New Jersey. To subscribe call 1-800-300-9321.

Circulation: 1-800-300-9321 ■ News: 908-575-6698
Advertising: 908-575-6660 ■ Classified: 1-800-559-9495

The Chronicle is here for you

The following information will help you get your ideas and community news into The Chronicle:

Call editor Craig Turpin at (908) 575-6698 with story suggestions, questions or comments. Information can be e-mailed to middlesex@njnpublishing.com.

The sports editor is Dave Allena. He can be reached at (908) 575-6690.

Our address: The Chronicle, PO Box 699, Somerville, NJ 08876. Our fax number is (908) 575-6683.

Correction policy

The Chronicle will correct errors of fact, context or presentation and clarify any news content that confuses or misleads readers. Please report errors to editor Craig Turpin at (908) 575-6698.

Elks' pancake breakfast raises funds to help injured Marines

Two members of the Marine Reserves 6th Motor Transport Battalion from the Red Bank Reserve Center suffered severe injuries when they came under attack just a few weeks after arriving in Iraq earlier this year.

Lance Cpl. Chris Lewis, married and the father of two, and Sgt. Jared Luce, married and the father of three, have since returned to the United States, where they are undergoing rehabilitation at Walter Reed Hospital in Washington.

The Red Bank Elks, Lodge 233, are holding a pancake breakfast June 26, from 9 a.m.-noon at the lodge building on Front Street in Red Bank to help raise funds for the critically-injured Marines. The Elks have already raised \$60,000 towards their goal of \$100,000 to purchase a handicapped-equipped van.

The menu includes pancakes, scrambled eggs, home fries, bacon, sausage, orange juice, coffee and tea, all for \$8. Donations are asked for children under 10.

Monster truck

Bill Braukmann will trundle out his 4x4 monster truck this weekend to help raise money for Operation Shoebox New Jersey 2005.

You can visit him and Shockwave today at the Manville Carnival on Duke Parkway East in Manville from 6-11 p.m. each of the three days. Bill and his wife Kim, big supporters of OPSHBX, ask that you bring a donation for the soldiers, and they'll gladly trade an auto-

Rod Hirsch
Executive
Editor



graphed picture. They'll also be selling OPSHBX t-shirts for \$10. All proceeds go to support the troops in Iraq.

On Sunday, Father's Day, the big yellow truck with purple trim will be parked at the staging area for the 10th Kelsey's Run charity motorcycle event Bridgewater collecting donations for OPSHBX, and the following Saturday, June 25, from noon-4 p.m. Shockwave will be on display in front of Midway Transmissions, 49 Old York Road in Bridgewater to help publicize OPSHBX. Visitors can have their picture taken alongside the truck in return for a donation to OPSHBX, according to "Midway Joe" Timmes.

To show support his support for this charitable cause, Shockwave flies the OPSHBX flag in the bed of the truck when it competes against other 4x4 monster trucks like Big Foot and Gravedigger.

Essay contest

Students in Somerset County are invited to enter an essay contest sponsored by The Chronicle, Operation Shoebox New Jersey 2005 and the Somerset Patriots, and in 200 words or less define

"What is a Patriot?"

Essays may reflect past, present, or even future examples. The entries will be evaluated by a committee whose members are from the educational, civic and business sectors, and judged according to grade level: Primary, Grades 1-5; Middle, Grades 6-8; Secondary, Grades 9-12.

First prize winners will each receive a \$100 U.S. Savings Bond and tickets for four to the Aug. 14 Patriots game at Commerce Bank Ballpark in Bridgewater. They will also be asked to read their award-winning essays prior to the singing of the National Anthem. Second and third place winners will receive a \$50 and \$25 U.S. Savings Bond.

Veterans from WWII, the Korean and Vietnam Wars, the Persian Gulf War and Operation Iraqi Freedom will be honored at the ballpark in the Parade of Patriots.

All entries must be postmarked by July 5, 2005; include the child's name and grade as of September, 2004, address and telephone number. Send entries to: The Reporter, Patriot Essay Contest, 44 Veterans Memorial Drive East, Somerville, N.J. 08876. Contest winners will be notified by phone.

Champagne Open

The 5th annual Champagne Open Charity Golf Tournament held June 7th at Beaver Brook Country Club in Annandale was a huge success; preliminary estimates

show that Operation Shoebox New Jersey 2005 will receive upwards of \$10,000 thanks to the efforts of promoter Tony D'Angelo, who was assisted by Frank Valanzola, vice president of Morgan Stanley at the Main Street Somerville office.

We're already making plans for the 2006 Champagne Open!

Kelsey Charity Run

OPSHBX will be on hand for the annual Kelsey Charity Run on Father's Day, a Bridgewater motorcycle event that continues to grow each year. The staging area is at 350 Woodside Lane; we'll collect donations and contributions from participants and spectators. Now in its 10th year, Kelsey's Run has raised over \$750,000. If you're planning to go or participate - and we would encourage you to do so - please bring along a bag of groceries for the troops.

Thanks, Alan

Alan Latanzio, a fourth-grader at the Copper Hill School in Raritan Township, is to be commended for his efforts to help the troops overseas. He coordinated a drive for grocery items at his school after reading an ad about OPSHBX in our sister publication, The Hunterdon County Democrat, and along with his mom, Denise; dad, Alan and grandparents Bob and Maryann Stumpf, delivered a truckload of goods to The Reporter office. Thanks to Alan, his family, fourth-grade classmates and teachers at the



The Reporter/CRAIG TURPIN

Alan Latanzio, a fourth-grade student at Copper Hill School in Raritan Township, has a look at some of the donated items he delivered to The Chronicle office that were sent to U.S. troops in Iraq.

school for their generosity and compassion.

T-shirts for sale

Quality t-shirts with the handsome Operation Shoebox New Jersey 2005 poster and logo are available.

Several stores on Main Street in Somerville are selling the shirts, which feature the distinctive red, white and blue Operation Shoebox New Jersey 2005 logo, and a full-color reproduction of the Operation Shoebox New Jersey 2005 poster.

The shirts cost \$10 and are also available at The Chronicle office, 44 Veterans

Memorial Drive East, and at several stores on Main Street in Metuchen. All proceeds from sale of the shirts directly benefit OPSHBX.

Buy one for yourself, buy a few as gifts. We can also reproduce the shirts in quantity for veterans' groups, corporations, or other sponsors, and include the name of your company or organization on the shirt. Call and ask for details.

Rod Hirsch is executive editor of The Chronicle. He can be reached at (908) 575-6684 or email rhirsch@njnpublishing.com.

Calendar of Events

June 16-18: Manville Carnival, Duke Parkway East, Manville, 6-11 p.m. each day, visit Bill Braukmann and his 4x4 monster truck Shockwave. Bring a donation for the soldiers in exchange for an autographed picture.

June 17: Classic Cruisers car show on Main Street, Somerville, every Friday night through Labor Day, Operation Shoebox New Jersey 2005 volunteers will collect donations and contributions in front of the United Reform Church, 6-9 p.m.

June 18: Soldiers' Shopping Spree, Pathmark Supermarket, 242 Lincoln Blvd., Middlesex, volunteers from the South Bound Brook Rescue Squad will collect items from shoppers as they exit the store.

June 19: 10th annual Ride for Kelsey, charity bike run, staging area, The Eagles, 350 Woodside Lane, Bridgewater, 9-11:30 a.m. Donations and contributions accepted for Operation Shoebox New Jersey 2005. Parking at Adamsville School, courtesy shuttle provided. Live music featuring The Razorbacks and Johnny Charles, Chinese auction, vendors, refreshments, Shockwave 4x4 Monster Truck, \$15 donation. (908) 252-4545.

June 19: Commerce Bank Ballpark, Bridgewater, Somerset Patriots vs. Bridgeport Bluefish, 7:05 p.m., fans bringing items for the soldiers will be given a voucher good for one free ticket to a game during the season. (908) 252-0700.

June 22: Raritan Classic Car Cruise, Somerset Street, downtown Raritan, 6:30-8:30 p.m., Operation Shoebox New Jersey 2005 volunteers will collect donations and contributions in front of Dorell & Sons Locksmith, 20 W. Somerset St. (908) 725-2096

June 24: Classic Cruisers car show on Main Street, Somerville, every Friday night through Labor Day, Operation Shoebox New Jersey 2005 volunteers will collect donations and contributions in front of the United Reform Church, 6-9 p.m.

June 25: Midway Transmissions, 49 Old York Road, Bridgewater, noon-4 p.m. Monster truck Shockwave will be on display to help publicize OPSHBX. Have your picture taken alongside the truck, and autographed by owner and driver Bill Braukmann in exchange for a \$5 donation.

June 27: Clinton Station Diner, Route 173 & Bank Street, Clinton (off Route 78), 15 percent of the

dinner receipts from 4-9 p.m. will be donated to Operation Shoebox. (908) 713-0012.

June 29: Raritan Classic Car Cruise, Somerset Street, downtown Raritan, 6:30-8:30 p.m., Operation Shoebox New Jersey 2005 volunteers will collect donations and contributions in front of Dorell & Sons Locksmith, 20 W. Somerset St. (908) 725-2096

July 1: Classic Cruisers car show on Main Street, Somerville, every Friday night through Labor Day, Operation Shoebox New Jersey 2005 volunteers will collect donations and contributions in front of the United Reform Church, 6-9 p.m.

July 4: Clinton Station Diner, Route 173 & Bank Street, Clinton (off Route 78), 15 percent of the dinner receipts from 4-9 p.m. will be donated to Operation Shoebox. (908) 713-0012.

July 9: Soldiers' Shopping Spree, Pathmark Supermarket, Veterans Memorial Drive, Somerville, volunteers will hand out a shopping list and collect items from shoppers as they exit the store. (908) 526-8868.

July 14: Multi-estate auction, Bodnar's Auction, Ukrainian Cultural Center, 135 Davidson Ave., Franklin. Donations and

contributions accepted for Operation Shoebox New Jersey 2005. Box lots, 11:30 p.m., main sale, 4:30 p.m. (732) 545-1700.

July 17: Sort, pick, box and ship. Volunteers gather at the 42nd Infantry Armory, Hamilton Avenue, Franklin, to prepare packages for shipment to soldiers, 1-5 p.m. Volunteers are needed. Call (908) 575-6684 for further

information.

July 18: Clinton Station Diner, Route 173 & Bank Street, Clinton (off Route 78), 15 percent of the dinner receipts from 4-9 p.m. will be donated to Operation Shoebox. (908) 713-0012.

Aug. 1: 6th annual Somerset Patriots Charity Golf Classic, Neshanic Valley Golf Course, Neshanic Station, shotgun start,

12:30 p.m. Operation Shoebox New Jersey 2005 is the spotlight charity for this event, which last year raised \$57,000 for Somerset Patriots Charities. Buffet lunch, putting contest, driving range, cocktail reception, four-course dinner, awards banquet. Each group will be paired with a Somerset Patriot player. Registration deadline is July 22. (908) 252-0700.

Operation: Shoebox New Jersey 2005 Drop-off sites:

Somerset County

The Chronicle office, 44 Veterans Memorial Drive East, Somerville

Commerce Bank Ballpark, 1 Patriots Way, Bridgewater
The 250th Signal Battalion, 42nd Infantry Armory on Hamilton Street in Franklin

The Somerville U.S. Postal Service office at 39 Division St., Somerville

Somerset County Sheriff's Office, County Administration Building, Grove Street, Somerville

Morgan Stanley, 166 West Main St., Somerville

Mannion's Pub & Restaurant, 150 West Main St., Somerville
Alfonso's Italian Restaurant, 99-101 West Main St., Somerville

Beneath It All, 72 West Main St., Somerville

Wachovia Bank, 1 West Main St., Somerville

Dr. William Moskowitz, 205 West Main St., third floor, Somerville

Somerville Center Antiques, 33 West Main St., Somerville

Dorell & Sons Locksmith, 20 W. Somerset St., Raritan (908) 725-2096

Shop-Rite Supermarket, 611 West Union Ave., Bound Brook

Girl Scouts of Rolling Hills Council, 1171 Route 28, North Branch

Nan Romano Fine

Apparel/Distinctive Gifts, 432 Main St., Bedminster

Somerset County Park

Commission main office, North Branch Park, Milltown Road, Bridgewater

Somerset County

Environmental Education Center, 190 Lord Stirling Road, Basking Ridge

Leonard J. Buck Garden, 11 Layton Road, Far Hills

Warrenbrook Golf Course, Warrenville Road, Warren

Spooky Brook Golf Course, Colonial Park, Amwell Road, Franklin

Raritan Valley Community College Theater and Student Activities office, Route 28, North Branch

Learning Express Toys, 315 Route 206, Hillsborough

Test Sports Club, 1982 Washington Valley Road, Martinsville

US Bicycle Hall of Fame, Main Street, Bridgewater

Powerhouse Gym, Route 22, Bridgewater

Felix #9 Diner, Route 22, Bridgewater

Bedminster Post Office, 251 Somerville Road, Bedminster

Attic Treasures Antiques, Sansone Plaza, Route 22 East, Green Brook

Country Manor Furniture, 272 Route 22 West, Green Brook

Dr. Steven C. Balestracci, 154 Adamsville Road North, Bridgewater

Soprano's, 154 Adamsville

Route North, Bridgewater

The Cricket, 408 Elizabeth Ave., Somerset

Morgan Stanley, 15 Independence Blvd., Warren

Baja Fresh Mexican Grill, 1595 Route 22 West, Watchung

Attic Treasures, 319 Route 22 East, Sansone Plaza, Green Brook

AAA Vac, 1515 Route 22 West, Watchung Square Mall, Watchung

Borough Hall, Route 22 and Grove Street, Somerville

Gladstone Cleaners, 258 Main St., Peapack-Gladstone

North Branch Post Office, Route 22, North Branch

Somerset Medical Center main lobby, 110 Rehill Ave., Somerville

Capelli Salon, 1171 Route 202 North, Branchburg

Natural Medicine and Rehabilitation, 745 Routes 202/206 South, Bridgewater

Sal's Talk of the Town, 1987 Washington Valley Road, Martinsville

Bucky's/The Closet, 45 So. Main St., Manville

Sherman & Son Jewelers, Bridgewater Commons Mall (second level), Bridgewater

Sherman & Son Jewelers, Somerset Shopping Center, Route 202/206, Bridgewater

Exercise Woman, Route 206 South, Raritan

**SALUTE
THEIR
SACRIFICE**

**OPERATION
SHOEBOX
NEW JERSEY 2005**
Support Our Troops

Salute the sacrifice of our troops deployed around the world by donating care package items through OPERATION SHOEBOX: NEW JERSEY 2005.

The Reporter, along with our community & corporate partners, are collecting small, personal items that will be packaged and shipped to the brave men and women serving overseas.

Look for our drop-off boxes at a store or business near you! Pick up The Reporter each week for updates and information. For details on becoming a drop off location, contact The Reporter's Executive Editor, Rod Hirsch at (908) 575-6684. Send your message of support today!

We're collecting the following items to be sent to our troops overseas:

- | | |
|---|---|
| <input type="checkbox"/> Suntan lotion | <input type="checkbox"/> Coffee |
| <input type="checkbox"/> Bug spray | <input type="checkbox"/> Small drink mixes |
| <input type="checkbox"/> Lip balm | <input type="checkbox"/> Socks |
| <input type="checkbox"/> Feminine products | <input type="checkbox"/> Clothesline/pins |
| <input type="checkbox"/> Ear swabs | <input type="checkbox"/> Snack food |
| <input type="checkbox"/> Laundry detergent | <input type="checkbox"/> Cereal/protein bars |
| <input type="checkbox"/> Bug wipes/bug strips | <input type="checkbox"/> Fleece blankets |
| <input type="checkbox"/> Wipes (travel size) | <input type="checkbox"/> Microwaveable foods |
| <input type="checkbox"/> Razors | <input type="checkbox"/> Hard candy/gum |
| <input type="checkbox"/> Toilet paper | <input type="checkbox"/> Writing materials |
| <input type="checkbox"/> Eye drops | <input type="checkbox"/> Batteries (any size) |
| <input type="checkbox"/> Spices/Tea bags | <input type="checkbox"/> Calling cards |

*Donated items must be in their original packaging.

Visit us on the web: www.NJ.com/shoebboxnj



Photos: Jon Naso/The Star-Ledger. Used by permission



The Reporter



UNITED STATES
MARINE CORPS RESERVE

A.R.M.S.
AMERICAN RECREATIONAL
MILITARY SERVICES

UNITED STATES
ARMY NATIONAL GUARD



Everything Jersey

Oh, say can you see by the dawn's early light . . .

The Chronicle is sponsoring a contest to test our readers' familiarity with landmarks, buildings, monuments and roadways throughout Somerset County graced by the American flag. Take a close look at the photos on this page; most have clues to help you identify the

location of the American flag in the picture.

Use the form at the bottom of the page to list the location of the flag in each picture, including the image on Page A1. There are a total of nine flags displayed. Be sure to specify the loca-

tion and the town. Deadline for entries is July 8.

If there is more than one entry with all nine locations identified correctly, there will be a drawing to determine the winner of the contest. The winner will be notified July 11, and a story

printed in The Reporter identifying the locations and the winner of the contest.

Prizes include four tickets to a Somerset Patriots game; Patriots' souvenirs; dinner at Mannion's in Somerville, a U.S. Savings Bond and other prizes.

Greenbrook Memorials
MONUMENTS, MARKERS AND BRONZE PLAQUES

Visit Our Large Indoor & Outdoor Display

Order Now for Summer Installation

GREENBROOK MEMORIALS

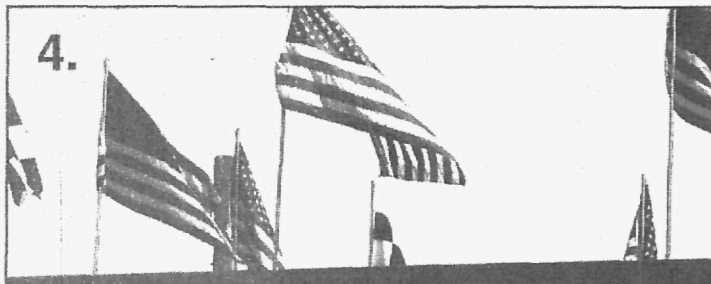
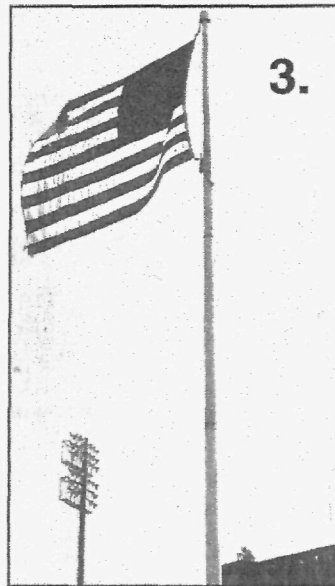
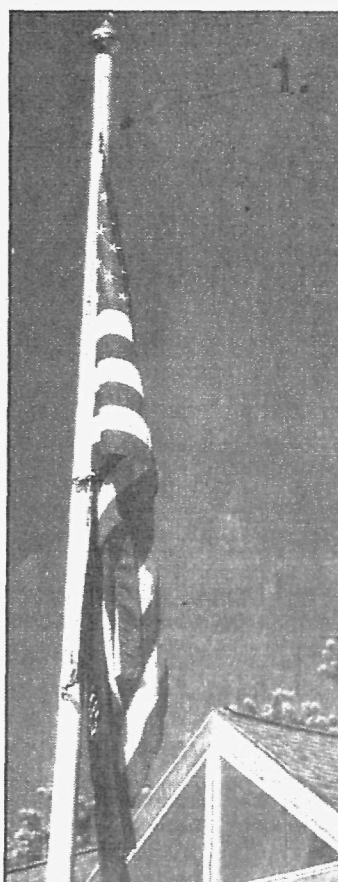
4 Generations of Memorialists

IMPORTANT NOTICE
Do **NOT** order your Memorial at the time of the Funeral.

Why purchase a Memorial from an inexperienced high priced salesperson - when you can make your purchase from a 4th generation memorialist whose only business is Memorial Sales.

SAVE 20% - 50%

103 Bound Brook Road (Rt. 28 near Acme)
Middlesex, N.J.
Open 7 Days
Evenings by Appt. **732-968-2543**



Photos by Henry Kielblock

Mail the entry form to:
The Chronicle American Flag Contest
44 Veterans Memorial Drive East
Somerville, N.J. 08876

Please include your name, address, telephone number and email address.

List flag locations below that correspond to the number alongside each photo:

Front Page

1 _____
2 _____
3 _____
4 _____

Name: _____

Address: _____

Town: _____

Zip Code: _____

Email: _____

The Reporter Somerset Messenger-Gazette • The Chronicle

Home Improvement

To place your ad call: Christine (908) 894-1082
cdulk@express-times.com

Deadline is Noon on Thursday prior to publication

ADDITIONS
VP WOODWORKING INC.
"SPECIALIZING IN EUROPEAN & ARCHITECTURAL DESIGN"
• KITCHENS • BATHROOMS • DORMERS
• DECKS • BSMTS • PORCHES • PAINTING • GRANITE
• MARBLE • CORIAN • RENOVATIONS • ADDITIONS
Free Est. • Fully Insured
908-289-0991

CARPENTRY
FULLY INSURED • FREE ESTIMATES
CB CARPENTRY LLC
REPLACEMENT WINDOWS & DOORS
DECKS
KITCHENS • BATHROOMS • GARAGES • SMALL ADDITIONS
AUTHORIZED ATRIUM DEALER ATRIUM
TEL: 908-322-2471 • CELL: 908-296-1704

DRIVEWAY
Driveway Sealcoating
FREE ESTIMATES
PRECISION PATCHING
AND
CRACK FILLING
Fully Insured
973-723-8442

LANDSCAPE
WATCHUNG HILLS LANDSCAPING
Lawn Maintenance • Landscaping
Mulch & Fertilizer Program
Brick Pavers • Retaining Walls
908-707-4527

PAINTING
Billee's Painting Co.
"When Only The Best Will Do!"
Interior / Exterior
Painting, Power Washing,
Staining, Wall Papering, Spackling
Fully Ins. with 23 Years Experience
Estimates Free
732-752-9245

ADDITIONS
CIRCELLI CONSTRUCTION, INC.
Additions • Renovations
Roofing • Siding
Masonry • Foundations
Retaining Walls • Patios
Free Est. Fully Bonded & Ins.
Established 1969
908-647-6251

CARPENTRY
Advanced Carpentry Services, LLC
FREE EST. FULLY INS. 20 YRS EXP.
Alterations • Attics • Basements • Painting
Custom Decks / Restorations
Int./Ext. Doors • Garages
Kitchens • Baths • Replacement Windows
732-424-8200 • 800-710-1151

ELECTRIC
Destiny Electric, Inc.
732-563-4734
Fully Bonded & Insured • Over 10 Yrs. Exp.
Evenings & Weekends Available
Resid / Comm. • Industrial
No Job Too Small • FREE Estimates
NJ License / Business Permit No. 14799

MASON
Bravo Construction
Steps • Sidewalks • Patios
Brick/Block Pavers
All Stucco Work
Concrete/Asphalt Driveways
Free Est. Ref. Avail. Fully Ins.
908-387-9810

PAINTING
By Murawski Properties LLC
Interior & Exterior Painting
Deck & Fence Staining
Free Estimates Fully Insured
908-927-0232

AIR CONDITIONING
RETIRED H. V. A. C Contractor
35 YEARS EXPERIENCE IN BUSINESS
A/C SPRING & SUMMER
STARTUP SPECIAL
1 ZONE: \$49.99 • 2 ZONE: \$79.00
FREE FILTER CHANGE IF UNIT NEEDS REPAIR •
HUGE DISCOUNT ON PARTS & LABOR
WE CAN ALSO PROVIDE SERVICE ON:
FURNACE • A/C UNITS • HUMIDIFIERS
DUCT CLEANING • HOT WATER HEATERS
ELECTRONIC AIR CLEANERS
FULLY INSURED FREE ESTIMATE
PHONE: **908-719-9684**

CARPENTRY
PROFESSIONAL CARPENTRY
Roofing • Siding • Windows
Doors • Porches • Decks
Most Repairs • Free Est
35 Yrs Exp. Call Len
908-561-4073

EXCAVATING
Vince DeFilippis
Excavating and Landscape Contractor
Quality Top Soil & Mulch Delivered
Loader • Backhoe • Bulldozer Service
Free Est. Fully Ins.
732-469-1270

MASONRY
SUNSET PINES 2001 MASONRY
BASEMENT WATERPROOFING • FRENCH DRAIN
ALL TYPES OF CEMENT WORK
STEPS • PAVING BRICK • STONE WALLS
PATIOS • SIDEWALKS • BLUESTONE ETC.
CARPENTRY AVAILABLE
908-522-1544

PAVING
DOUGHERTY PAVING
Driveways • Parking Lots
Concrete & Masonry
Excavation •
Paving Stone • Walkways • Curbing
Free Est. Fully Ins.
908-561-6452

To Advertise
Call Christine
908-894-1082

FLOORING
SPARKLE
Hardwood Floor Specialists
Installed • Refinished • Sanded
Carpet, Upholstery & On Site Drapery Care
Oriental & Area Rugs Cleaned & Restored
800-307-4494 • 908-464-2653

MULCH BY
MULCH Supply.com
Landscape Mulch • Screened Topsoil
Playground Mulch • Free Delivery
1-800-89-MULCH

To place your ad call:
Christine
(908) 894-1082

BUILDING & REMODELING
AMERICAN HOME REMODELING
100% FINANCING
Interior/Exterior Improvements
NY/NJ Licensed & Insured
Vinyl Siding • Roofing • Windows
Doors • Masonry • Stones & Steps
10% OFF w/Ad
800-942-5541 • Fax: 973-374-9446
E-mail: AmericanHome1@aol.com
Web: www.improvetoday.com

CLEANUP SERVICES
AL CLEAN UP
Yards • Cellars • Garages • Etc.
Estate Clean Outs
"We Are The Cheapest"
10% Off w/Ad
732-257-7197 • 800-888-0929

GUTTERS
GUTTERS & LEADERS
Expertly Cleaned & Flushed
From \$50-\$70
• Repairs •
Quality Gutter Screening Installed
Call Glen Stevens
973-398-1485

OIL TANKS
MIKE WATERS
OIL TANKS & BOILERS
FILLED/REMOVED
DEP APPROVED • ENVIRONMENTALLY SAFE
908-964-4860

TREE SERVICE
COUNTRYSIDE TREE EXPERTS
www.countryside-treeexperts.com
• Pruning & Trimming •
• Land Clearing •
• Stump Removal •
• Crane Services •
• Tree Removal •
• Landscaping •
• Snow Plowing •
• Firewood •
Fully Insured • Free Estimates!!
20 Years Experience • Residential / Commercial
CALL THE EXPERTS
1-888-638-9405

CLEAN-UP/REMOVAL
TIRED OF THE CLUTTER?
• Cellars • Garages • Attics • Estates
ARTIE'S Clean-Up
LOWEST PRICES!
Fully Insured • Reliable Service
732-238-6111 or 908-221-1123
\$25 Off With AD!

JTM LAWN CARE
JTM Lawn Care
Residential - Commercial
Lawn Maintenance
Fertilizer & Weed Control
Shrub Care & Yard Clean-Ups
Free Est. Avail 7 Days Fully Ins.
10% Off w/AD
732-968-3646 • 732-277-7390

OIL TANKS
PRO TANK OIL TANK SERVICES
REMOVED • FILLED • INSTALLED
NJ APPROVED • 16 YRS EXPERIENCE
908-851-0057
www.protankservices.com

BUILDING • REMODELING
DECKS UNLIMITED

We build all sizes and shapes
10 year guarantee

All our wolmanized & cedar lumber guaranteed
Free Estimates - Fully Guaranteed
908-707-4447

CLEAN-UP SERVICE
DANCE
Demolition & Clean-Up
"We Clean-Up - Not Your Pockets"
All Types of Debris Removed
Attics • Basements • Garages
Demolition-All Phases of Interior • Exterior
Bathroom • Kitchen Specialists
908-759-1463

LAWN SERVICE
Johns Lawn Service
Affordable Lawn care
Affordable Prices • Owner Operated
Free Est. No Job Too Small
908-872-7150

PAINTING
J&B Painting LLC
"WHEN QUALITY COUNTS"
INTERIOR/EXTERIOR
POWERWASHING • DECKS
Free Est. Fully Ins.
732-469-7097

DISPOSAL
D. Banks
Disposal Company
Waste Removal & Disposal Service
All Types of Debris Removed
908-756-6557
908-447-7117 Cell

To place your ad call:
Christine
(908) 894-1082

PAINTING
M.T.M. Painting Co.
Interior & Exterior Painting
Power Washing
Fully Insured Free Estimates
Todd Mata
732-690-0429

To place your ad call:
Christine
(908) 894-1082

Middlesex Briefs

Support offered to those with low vision

EDISON — The Jewish Family and Vocational Service of Middlesex County has a support group for anyone with low vision.

This support group meets from 10:30 a.m.-noon Tuesday in the agency's office at 515 Plainfield Ave. The group will bring together people to exchange helpful information and learn practical solutions while meeting, talking and giving emotional support.

Transportation can be arranged. Insurance may be accepted in lieu of a fee.

For registration, call Fran Starr at (732) 777-1940, Ext. 113.

Women in Song series presents Dar Williams

METUCHEN — Critically acclaimed singer-songwriter Dar Williams will perform as part of the "Women in Song" benefit con-

cert series at 8 p.m. June 25 at the Forum Theatre, 314 Main St. The evening's special guest will be Suzanne Buirgy.

"Women in Song" benefits Women Helping Women, a non-profit organization with offices in Metuchen and Franklin Township. The organization provides affordable therapy and support services for women and girls throughout Central Jersey.

Tickets are \$40, \$35 and \$30. For reservations, call (732) 548-0582.

For full information on Women Helping Women, visit www.whwnj.com or call (732) 549-6000.

Middlesex pool still has openings available

MIDDLESEX — The Middlesex Community Pool has a few memberships available for its 2005 season.

Applications are available at the

Municipal Building and Middlesex Public Library, both on Mountain Avenue. Proof of residency and proof of identity are required. Photo ID is required for admission to the pool.

Swimming lessons are in two sessions, June 27-July 8 and July 11-22. Registration for the first session is from 10 a.m.-noon June 25 at the pool. Registration for the second session is from 10 a.m.-noon July 9 also at the pool. For more information, call (732) 537-1362.

Venue changed for Piscataway concert

PISCATAWAY — In a change of venue, the Piscataway High School Concert Choir and Notables will perform at 7:30 p.m. Saturday, June 18 at Christ United Methodist Church, 485 Hoes Lane.

This is the final concert for Anthony Maglione, the choir direc-

tor and a longtime resident who leaves Piscataway this month for graduate studies at East Carolina University.

The program will present the human experience through music — life, love, death, the triumph of the human spirit. Tickets are \$10 and may be purchased at the door.

The Concert Choir and Notables have won many music awards and have been invited twice to perform at Carnegie Hall.

Teams being sought for slow-pitch games

Teams are being sought for the Middlesex County Parks and Recreation Department's fall slow-pitch softball leagues.

Opening Day is scheduled for late August. The season runs through October but may be extended into November.

The men's single-game league plays at 6:45 p.m. Monday and

Wednesday. The men's double-header league plays at 6:45 p.m. Tuesday and Thursday. Men's league games are at Thomas Edison Park in Edison and Warren Park in Woodbridge. Entry fee is \$330 plus a \$75 refundable forfeit fee. Umpire fees are \$18 per team per game.

The women's league, which is limited to eight teams, plays at 10:30 a.m. and 11:45 a.m.

Sunday at Warren Park. Entry fee is \$155 plus a \$75 refundable forfeit fee. Umpire fees are \$18 per team per game.

Teams are accepted on a first-come, first-served basis. Up to 5 players on any roster may be non-county residents. Rosters and payment must be submitted by Aug. 5. For more information, call (732) 745-4222 or (732) 745-3900.

NEED A NEW COMPUTER - BUT NO CASH?

You're APPROVED - Guaranteed!

- No Credit Check
- Bad Credit
- Bankruptcy OK

8AM-10PM EST. M-F

1-800-419-8479

*Checking Account Required

www.PCS4ALL.com

Obituaries

Fern M. Millet

BOUND BROOK — Fern M. Millet, 90, died June 2, 2005 at Newton Memorial Hospital.

Born in Tamaqua, Pa., she lived in Bound Brook and Florence before moving to

Cream Ridge.

Mrs. Millet was a former member of St. John Lutheran Church.

Her husband, William C., is deceased.

Surviving are two sons, William and wife Michele of New Egypt and Jeffrey and wife Mary Beth of Lafayette; seven grandchildren and five great-grandchildren.

Harry Whittington

BOUND BROOK — Harry R. Whittington, 76, died June 7, 2005 at Brandywine Assisted Living at Middlebrook Crossing, in Bridgewater.

Mr. Whittington was born in Plainfield. He lived in Bound Brook and Myrtle Beach, S.C.,

before moving to Bridgewater. Mr. Whittington retired in 1996 after 35 years as the owner of Harry Whitt's Floor Covering in Middlesex. He was a member of the Elks in Bound Brook and the American Legion in

Middlesex. Surviving are his wife, Mildred P. Schafer Whittington; a daughter, Patrice P. Greaney of Bound Brook; three sisters, Agnes, Clare and Rose; a grandchild; and several nieces and nephews.

Freda Bonesteale

BOUND BROOK — Freda L. Bonesteale, 81, died June 11, 2005 at the New Jersey Eastern Star Home in Bridgewater.

Born Sept. 16, 1923 in South Bound Brook, she was a daughter of the late Frederick and Emma Ulmer.

Mrs. Bonesteale lived in South Bound Brook and Edgewater Park before moving to Bound Brook. She retired in the early 1970s after 20 years as a production worker with Burroughs Corp. in Warren.

She was a member of the Edgewater Park Senior Citizens Club and St. Joseph Roman Catholic Church in Beverly.

Deceased are her husband, Andrew; two brothers, Donald Ulmer in 1984 and Robert Ulmer on June 2, 2005; and a sister, June O'Connor in 1998.

Surviving are two brothers, Harry Weston of Warren and Lewis Ulmer of Neshanic; and two sisters, Marion Schuster of East Brunswick and Shirley Birkchak of Bridgewater.

Services were held Wednesday at the Hagan-Chamberlain Funeral Home. Burial was in Odd Fellows Cemetery, Burlington.

Louis LoCollo

DUNELLEN — Louis Romulus LoCollo, 49, died June 10, 2005.

Born April 25, 1956 in Plainfield, he lived in Raritan and Dunellen before moving to Manville. Mr. LoCollo held a bachelor's degree in economics and was an accountant. He was a fourth-degree knight with Knights of Columbus Council 1432. He also was a member of the George Washington Assembly and the chess club at the Manville Public Library.

A sister, Louise Isabella, died in 1970. Surviving are his companion of 25 years, Deborah Banco of Manville; his parents, Romulas and Gladys Louise Dodd LoCollo of Raritan; three brothers, Romulus of Phillipsburg, Vincent and Anthony, both of Raritan; two aunts, Ilda Gutholm of Brick and Rose Ray of Texas; an uncle, Idealo; and several nieces, nephews and cousins.

Thank You!
For Voting Us*
"Best Oil Change"



*Readers' Choice 2004

BRIDGEWATER | GREEN BROOK
1316 Route 22 East | 195 Route 22 East
908-231-9800 | 732-424-7300

NEW HOPE BAPTIST CHURCH

45 Hampton Street, Metuchen, NJ 08840

(732) 549-8941

Rev. Ronald L. Owens, Sr. Pastor

Sunday Worship Services at 8am & 11am

1st & 5th Sundays at 9:30 am

Wednesday Bible Study 12noon & 7pm

Wednesday Prayer Meeting 6pm

Saturday Church School 9am

"Where worship is joy and joy is worship"

www.nhbchurch.com

INFO LINE of Middlesex County

HELP IS ONLY A PHONE CALL AWAY.

Now also The Homeless Hotline of Middlesex County.

Info Line of Middlesex County can help you locate services for:

Financial Assistance Counseling Healthcare
Housing Food/Clothing Support groups
Addiction Services Senior Services HIV/AIDS

... and much more.

24 Hours A Day ... 7 Days A Week.

Dial Toll Free 2-1-1 or 1-888-908-4636

Visit our on-line directory at: www.info-line.org

COME VISIT OUR TWO LOCATIONS

OAK TREE DISCOUNT
WINES & SPIRITS

902 Oak Tree Rd., South Plainfield
908-561-0051

(across from A&P Shopping Center)

OPEN: Mon. - Wed. 9am - 9pm, Thurs. - Sat. 9am - 10pm, Sun. 10am - 7pm

PLAZA DISCOUNT
WINES & SPIRITS

561 Route 1, Edison
732-572-WINE

(in Wick Shopping Plaza)

OPEN: Mon. - Sat. 9am - 10pm, Sun. 12 noon - 8pm

BUY RITE LIQUOR
"The place for people of great taste"

HAPPY FATHER'S DAY!
EXCEPTIONAL VALUES

ARBOR VALLEY Chard., Merlot, Cabernet 7.99	ARBOR VALLEY Chard., Merlot, Cabernet 4.99
---	---

BEST BUYS AND GREAT WINE VALUES

BERINGER STONE CELLARS Chardonnay 9.99	BERINGER FOUNDER'S ESTATE Chardonnay 7.99	ROSEMOUNT Chardonnay 7.99	RANCHO ZABACO DANCING BULL Zinfandel 7.99
---	--	--	--

BERINGER STONE CELLARS Chardonnay 9.99	ROBERT MONDAVI WOODBRIDGE Cabernet Merlot 7.99	VENDANGE Chard., Cabernet Merlot, White Zinf. 6.99	BOLLA Pinot Grigio, Cabernet Merlot, Chardonnay, Valpolicella 10.99	JINDALEE Cabernet Merlot, Chardonnay, Shiraz 10.99	BRANCOTT Cabernet Merlot, Chardonnay, Shiraz 8.99
BERINGER FOUNDER'S Cabernet Merlot 7.99	KENDALL JACKSON VINTNER'S RESERVE Cabernet Merlot 12.99	SUTTER HOME Cabernet, Chardonnay, Merlot, Pinot Grigio 4.99	SANTA RITA RISERVA Cab., Merlot, Chard. 8.99	ROSEMOUNT Cabernet Merlot, Shiraz 9.99	ECCO DOMANI Pinot Grigio, Chard. 7.99
RODNEY STRONG SONOMA Cabernet Merlot 12.99	SMOKING LOON All Types 7.99	FISH EYE All Types 6.99	KORBEL Brut, Extra Dry 10.99	COOKS Brut, Extra Dry 5.99	MOET & CHANDON White Star Extra Dry 28.99

FATHER'S DAY GIFT SELECTIONS (ALL GIFTS 750 ML)

RUFFINO RISERVA Duke's 1st 16.99	MAKER'S MARK Bourbon 21.99	CROWN ROYAL Canadian Whisky 19.99	GLENLIVET 12 Year Old Premium Scotch Whisky 29.99	BOMBAY Sapphire Gin. 18.99	CABO WABO Rum 39.99	BELVEDERE Vodka 80 25.99	COURVOISIER VSOP Cognac 28.99
FRANZIA Chard., Cab., Merlot, Pinot, Burgundy, Rhine 9.99	PETER VELLA Cabernet, Chard., Merlot, White Zinf. 11.99	LIVINGSTON CELLARS Cabernet, Chard., Merlot, White Zinf. 8.99	BEER SPECIALS	BUD, SELECT, BUD LIGHT, BUD ICE & BUD ICE LIGHT 12 oz. Cans 13.99	MILLER HIGH LIFE & HIGH LIFE LIGHT 12 oz. Cans 11.99	NATURAL LIGHT & ICE 12 oz. Cans 10.99	YUENGLING TRADITIONAL LAGER OR BLACK & TAN 23.3 oz. Bottles 15.99

LIQUOR AND SPIRITS

SEAGRAM 7 CROWN Whisky 14.99	STOLICHNAYA Vodka 80° 29.99	BACARDI Rum 18.99	JOSE CUERVO Tequila 16.99
BLACK VELVET Canadian Whisky 12.99	FLEISCHMANN Dry or SKYY 11.99	E & J GALLO VS Brandy 7.99	ROMANA SANCUBA Rum 17.99
OLD SMUGGLER Scotch Whisky 15.99	SMIRNOFF Vodka 80° 18.99	B & B Liquor 25.99	T.G.I. FRIDAY Liquor 12.99
CUTTY SARK Scotch Whisky 26.99	GORDON'S Vodka 80° 13.99	STOCK Dry or Sweet Vermouth 4.99	
MACALLAN 12 Year Old Single Malt Whisky 35.99	RON RICO Silver or Gold Rum 26.99		
BEEFEATER Gin 26.99			

PRICES EFFECTIVE WEDNESDAY, JUNE 15 THRU TUESDAY, JUNE 21, 2005

*We reserve the right to limit quantities. *Not responsible for typographical errors. *The specific prices and products within this ad are available at this store.

Smile. You're home now.

At Summit Federal, we know it's your family that counts. Giving them a great home really matters, too. So we make it easier to buy your home and help you feel more secure in your decision. To find out more about the mortgage plans shown here, just give us a call. We'll be glad to show you how we've been making buying a home easier for families since 1891. Because your family is what counts.

10-YEAR CONVENTIONAL No Points!	15-YEAR CONVENTIONAL No Points!
4.875% Rate	5.125% Rate
4.965% Annual Percentage Rate	5.191% Annual Percentage Rate

CALL OUR MORTGAGE HOTLINE FOR OTHER COMPETITIVE RATES AND TERMS
732-968-0665
www.summitfsb.com

Summit Federal Savings Bank
Where customers count.

441 Springfield Ave. Berkeley Heights 908-464-0860	55 Highway 22 Clinton 908-735-7000	393 Springfield Ave. Summit 908-273-8150	388 Route 57 West Washington Twp. 908-689-0700
--	--	--	--

Dunellen Office: 205 North Washington Ave. • 732-968-2864

Senior NOW Account holders, come in and see what's new for you!

For example, for every \$1,000 borrowed at a rate of 4.875%, your monthly principal and interest payment would be \$10.55. For every \$1,000 borrowed at a rate of 5.125%, your monthly principal and interest payment would be \$7.98. Monthly payments do not include property taxes, mortgage insurance or any other additional costs that may apply. 20% down payment is required. Rates subject to change.

Member FDIC

Senior Citizens Calendar

2005
Sandcastle Contest
www.visitbelmar.com

Bound Brook

The Bound Brook Seniors meet 7 p.m. the first Wednesday of each month in Asbury Hall of the Bound Brook United Methodist Church, 150 W. Union Ave.

Upcoming Trips and Events:
Atlantic City trips are held the third Tuesday of each month, leaving 9:45 a.m. from El

Imperial. Call Ed Kimmel at (732) 469-1263.

Aug. 9 — Hawaiian Luau - \$64

Sept. 25 to Oct. 1 — Golden Isles of Georgia - \$513 - details to follow.

Oct. 12 — Oktoberfest at Hunts Landing, details to come. For detailed information, call President Frank Gilly at (732) 356-6310.

Senior Leisure Club of St. Mary's Bound Brook club sponsors bus trips to Atlantic City Casino Taj Mahal every fourth Tuesday of each month. Bus departs from St. Mary's Church Parking Lot at 10:15 a.m.

The Senior Leisure Club of St. Mary's meets at 1 p.m. every second Monday in the cafeteria of Holy Family Academy School located at 201 Voesseller Ave. in Bound Brook. For further information, call club president Sal Barbat (908) 725-5444.

Dunellen

The Dunellen Senior Citizen Club is open to all

Dunellen residents 60 years and older. Meetings are held each Friday at 10 a.m. at the new seniors building on Orange Street in Columbia Park. Bingo is played each Friday after the meeting. Bus transportation is provided. We are currently looking for new members, come out and enjoy! Why stay home, we serve coffee and tea, bring your own sandwich, and enjoy the company of your peers.

For information, call (732) 968-1285; President of Dunellen Senior Citizen Club, Ida Cihanowicz.

Metuchen

The Metuchen Chapter 3208, AARP, holds a monthly meeting at St. Luke's Episcopal Church, 17 Oak Ave. and Middlesex Ave. (Route 27). The monthly board meeting is at noon and the general meeting starts at 1:15 p.m. The chapter is currently accepting new members; call Thomas Costello for further information at (732) 548-7901.

Middlesex
Borough

Middlesex: Bus transportation is available for borough seniors. Sign up by calling (732) 356-0414. Wednesdays are Senior Day at the club.

South Bound
Brook

The South Bound Brook Senior Citizens Community Club meets 2 p.m. July 6 at Our Lady of Mercy Church Hall, 122 High St. Bingo is played every Wednesday and refreshments are served. A box of pasta per member will be collected at the meeting for the food bank. The club is open to all seniors, 55 years and older residing in South Bound Brook. For information, call Catherine (732) 356-4080.

Coming Events/Trips:

July 20 — Picnic
Aug. 18 — Three Little Bakers - "Bye, Bye Birdie." Call Catherine.

June 27 to August 5
Martinsville, New Jersey



Open House
Sunday, June 26, 1:00 pm

PINGRY

**Day Camps
2005**

Boys and Girls, Ages 3 to 14

Swimming • Ceramics • Crafts • Computers • Games
Sports Clinics • Outdoor Activities • Healthy Lunch Included
Staffed by Professional Teachers

Ask About Our Academic and Lacrosse Camps

For registration information, call 908-647-5555
or visit our Web site at www.pingry.org

BODY, MIND AND SOUL

**Sacred Spaces
Yoga Center**

www.mysacredyoga.com

We Offer:

Yoga • Children's Yoga
Senior's Yoga • Massage
Danskineetics® • Meditation
Voice Dialogue • Prenatal • Reiki
Juice Bar & Unique Retail

Yoga Is For Everyone - All Levels Welcome



1119 Inman Ave. Edison, NJ
In The Inman Grove Shopping Center
908-222-3534

To
Advertise
Call
Christine

908-894-1082

E-mail

cdulk@express-times.com

TRANQUILITY
ACUPUNCTURE

349 Doctors Way - Rt 206
Hillsborough, NJ
908-874-8344

Discover The Power of:

Natural Healing
Pain Management
Allergies & Sinus
Menopausal Issues
PMS • IBS
Fatigue • Stress
Smoking Cessation

To Place Your Ad, Please Christine @ (908) 894-1082

Kutztown
Pennsylvania German
Festival

Revisit Your Past at America's
Premier Folklife Festival

July 2~ July 10

- ♥ 200 Demonstrating Craftsmen
- ♥ 2,000 Local Handmade Quilts
- ♥ 6 Entertainment Stages
- ♥ Folklife Demonstrations
- ♥ Children's Farmyard & Theatre
- ♥ PA-Dutch Food & Dinners

GREAT DAY TRIP!
Located off of I-78
near Allentown, PA
12 & under - FREE
Hours: 9 a.m. - 6 p.m.

KUTZTOWN, PA ♥ 888-674-6136 ♥ www.kutztownfestival.com
CONVENIENTLY LOCATED OFF I-78 BETWEEN READING & ALLENTOWN

SAVE \$2 OFF ADMISSION!

Festival Hours: 9 a.m. - 6 p.m.

Limit 1 discount admission per coupon.

Weekend
Calendar

Saturday, June 18

PISCATAWAY - Raritan Valley Radio Club: "HAMFEST" 2005 FLEAMARKET 7 a.m. to 2 p.m. at Piscataway H.S. Buyers: \$5, Sellers \$5 plus \$5 each additional space. Call (732) 968-7789 before 8 p.m. or W2QW website www.W2QW.ORG.
EDISON - Toy Sale: 9 a.m. to 3 p.m. at Community Presbyterian Church, 75 Glenville Road. Proceeds for church renovation. Priced to sell! Call (732) 287-1666 for details.

Tuesday, June 21

SOUTH PLAINFIELD - Summer Solstice Celebration. Meet at the Sylvania Place gate of the Highland Avenue Woods Nature Reserve at 7:30 p.m. Storytelling and an evening nature walk.

THE
EYE
CENTER

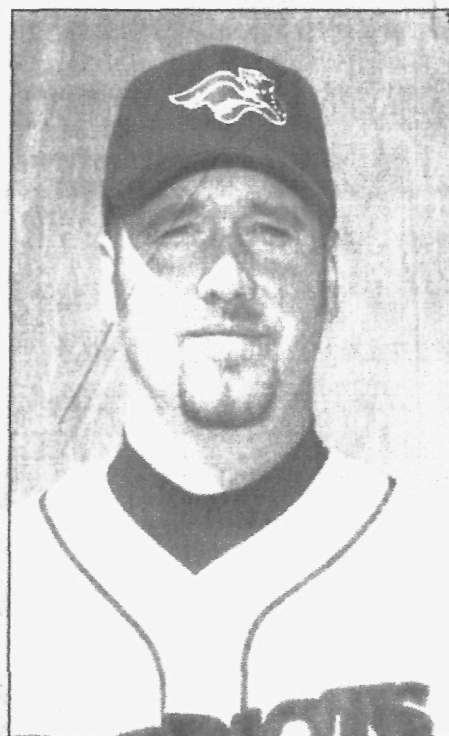
WE'VE MOVED
From South Plainfield

Come in to See

We are now located at
3900 Park Avenue
Suite 106
Edison, NJ 08820
732-603-2101

Mark J Krawitz, MD
John F. Lane, MD
Lekha H. Gopal, MD
Susan R. Carter, MD

Vincent J. Giuseffi, MD
Debra A. Firestone, MD
Jasvinder Singh, MD
Arthur R. Siegel, OD

PATRIOTS
PLAYER
Of The Week

TODD BETTS
First Baseman

Betts hit .692 with nine hits, eight runs scored, two home runs, and four RBIs during a three-game series against the Lancaster Barnstormers. He had a .393 batting average over an eight-game stretch, with 10 runs, 11 hits, two home runs, and five RBI in 28 at bats.

PLAY BALL!



See You At The Game. - Commerce Bank Ballpark - I Patriots Park, Bridgewater

Senz lifts South Plainfield past Northern Burlington

Jessica Senz, outstanding defense and a little offense went a long way for the Tigers Saturday with everything on the line.

With Senz pitching a two-hitter, the defense turning in a flawless performance and the offense providing a comfortable working margin right off the bat, the South Plainfield High softball squad captured the state Group III championship with a 3-0 conquest of South Jersey champion Northern Burlington at Toms River East High School.

Entering the final Senz had been outstanding in state play, having allowed one run in four games and was riding a stretch of three consecutive shutouts.

In her final appearance for the Tigers the senior right-hander went out as a champion.

Senz, once again exhibiting great control, fanned seven without allowing a walk, pushing single-season school record for strikeouts to 240, while allowing two singles and never allowed more than one base-runner in an inning and neither advanced beyond second base.

The victory gave South Plainfield a final record of 25-5 with Senz recording each decision. The triumph was the 79th of Senz's career, while the Tigers captured their first group title since 2000.

A lot of the pressure of pitching for a championship was taken away when the Tiger offense struck for two runs in the top of the first inning. After that it was all

GROUP III SOFTBALL

Senz, especially after the second inning as she retired the final 16 batters she faced.

With one out Stephanie Falzarano legged out an infield grounder to get South Plainfield started. Lacey Santone, (2-for-3) a key member of the lineup who had failed to get a hit in three straight games, then delivered the biggest hit of the game and her career with a drive to the right-center field gap for an RBI triple.

Charlie Kazimir followed with another infield hit but Santone held third on the play, leaving runners at the corner. Lauren Fry, however, picked up a big hit for a quick insurance run with a single to right knocking in Santone to make it a 2-0 contest.

Northern Burlington hurler Amanda Morgan (27-3) settled down after that and limited the Tigers to one hit over the next five innings, but South Plainfield tacked on another run in the seventh.

Singles by Jessica Miller and Kelly Downes with one out got the inning started, while an error loaded the bases for pinch-hitter Megan Boyle, who plated courtesy-runner Christina Schuetz with a fly ball.

South Plainfield 2, Sparta 0 — In a game in which it failed to get a hit the Tigers parlayed another excellent show-

ing from Senz and the defense and took advantage of an injury to edge North Jersey 1 champion Sparta in the semifinals June 7.

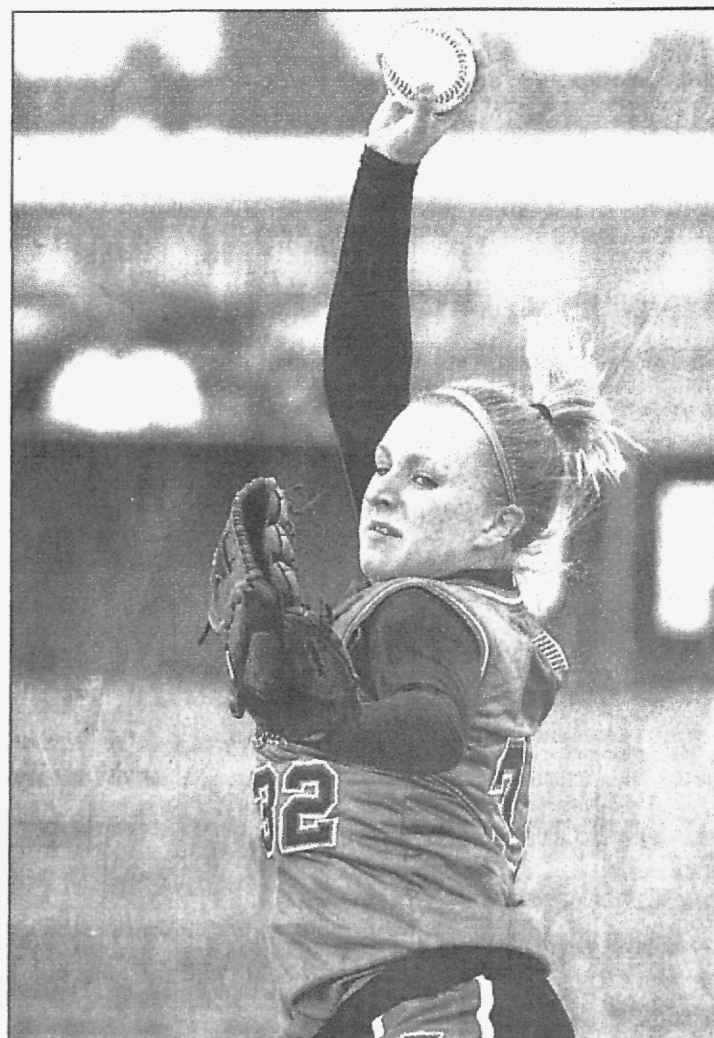
Senz allowed three infield hits and pitched out of one major jam after the first inning to out-duel Sparta's Kristie Pellicani as Sparta dropped to 25-4 on the season.

Sparta saw their starting catcher go out with a thumb injury in the bottom of the sixth inning, and that proved to turn around the scoreless contest. With one down Falzarano stood at second after reaching on an error and moving to second on a sacrifice bunt by Santone.

Kazimir then fouled a ball off the catcher, who had the leave the game, and everything fell apart for Sparta. Kazimir and Fry both struck out but both reached first base when the catcher couldn't handle the pitches to load the bases.

With Miller at the plate a passed ball allowed the first run to score and with runners at second and third Miller hit a popup to second. Kazimir, however, went home on the play and scored when the tag at the plate was applied too late.

The scoring came moments after Falzarano had come with the defensive play of the game. Sparta had runners at second and first with no outs when the second baseman turned a sharply hit ball into a double-play. Senz' then struck out the final batter to keep it scoreless entering the bottom of the inning.

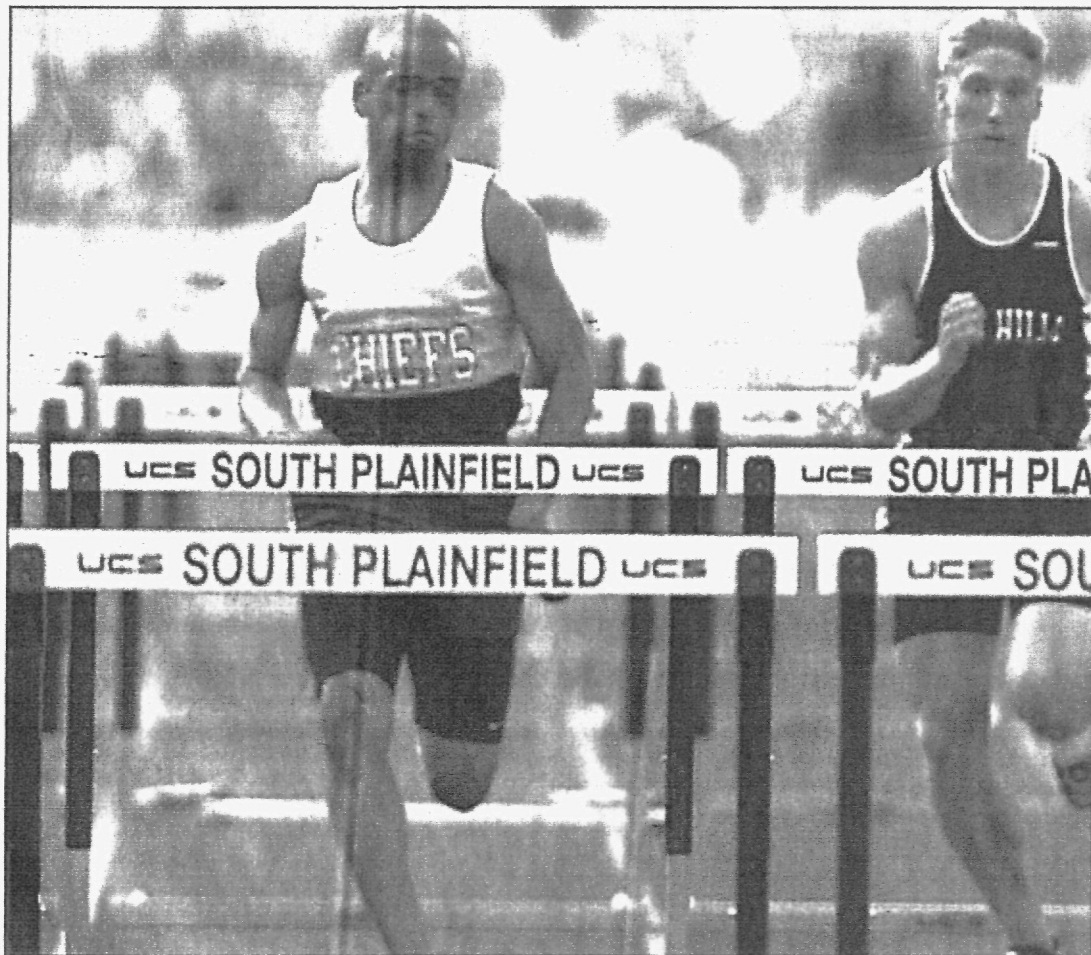


LARRY MURPHY/CORRESPONDENT

South Plainfield High's Jessica Senz, seen here pitching earlier this season, tossed a two-hitter for her fourth straight shutout as the Tigers captured the state Group III softball championship Saturday with a 3-0 decision over Northern Burlington.

Washington anchors Piscataway to gold in relay

Chiefs come away with six top-six finishes



GEORGE PACCIELLO/STAFF PHOTOGRAPHER

Piscataway High's Jon Francois runs the 110-meter high hurdles at the Meet of Champions June 8. Francois finished 14th overall with a time of 15.06 seconds.

SOUTH PLAINFIELD — Asia Washington showed she could carry her speed all the way to the end.

After placing in two other events the Piscataway High junior anchored the Chiefs' 4 X 400-meter relay squad to the Meet of Champions title in county record time in the final event of the day at South Plainfield High's Frank Jost Field June 8.

Washington produced an impressive 53.9-second split to bring home the gold in the final leg after Michelle Losey (55.9), Colleen Cumberbatch (58.8) and Ayana West (59.6) had put her in a great position with second place heading into the last 400 meters.

Despite a problem on the handoff when another team cut in front of the Chiefs' pass Washington took the lead with 250 meters left and pulled away from there for a clocking of 3:48.42, which bettered Piscataway's Middlesex County standard. Cross-river rival Franklin took the silver medals in 3:50.04.

Washington also added a fourth-place finish in the long jump and a fifth in the 400. Her jump of 18 feet was good enough for fourth in an event that went to Parsippany's Celeste Holder, who soared 19-2½ for the gold.

In the 400 Washington finished in 55.56, while Ocean's Tiffany Grant shocked the star-studded field by blazing to the top spot in 54.34, easily beating Franklin's Simone O'Connor, who finished second in 55.06.

Cumberbatch also posted a top-six finish to claim a medal, which went to the top eight performers in each event, by taking sixth in the triple jump with a top effort of 36-6. West

Deptford's Jessica Mills, however, shattered the meet record of 38-8 with a jump of 39-6 to take the gold.

Malcolm Jenkins and Rob Damon turned in fine performances in their final competition for the Piscataway boys as both logged top-four efforts while helping the Chiefs' relay squad place 10th.

Jenkins earned a bronze medal for taking third in the 400 intermediate hurdles in 53.88, just ahead of J.P. Stevens' Brian Sutherland, who took fourth in 54.11. Phillipsburg's Justin Gaymon, who was a double-winner in the hurdles, earned the gold in the 400s in 51.55.

Damon claimed fourth place in the 800 with a 1:54.06 clocking as Bordentown's Rob Novak won in 1:50.36. Damon also anchored the relay team, which included Jenkins, Matt Fasano and Robert Williams, to a time of 3:21.44.

South Plainfield's Krystal Williams didn't miss a medal by much as her time of 12.49 in the 100-meter trials left her .13 of a second out of eighth place as her time was 11th overall.

The Metuchen boys relay team and Ryan Malloy of Bound Brook also fell a bit short of reach the medal stand as each came away with 12th-place finishes.

Metuchen turned in an outstanding effort in the relay with as 3:22.63 clocking as Jeff Ostermueller, Thomas Stevens, Dan Zizniewski and Marcus Farris finished less than a second behind Piscataway. Malloy, meanwhile, ran a 49.85 in the 400.

Piscataway's Jon Francois finished 14th in the preliminaries of the 11 high hurdles with a time of 15.06 seconds.

MEET OF CHAMPIONS TRACK & FIELD

Hawks go down swinging against awesome Sweeney

It's been said to be the best you have to beat the best. The Hawks weren't able to do that Saturday with a state title on the line.

Rancocas Valley senior Lisa Sweeney, the state's all-time leader in strikeouts, proved almost un-hittable as the J.P. Stevens High softball squad failed in its bid for the state Group IV championship when it bowed 2-0 at Toms River North High School.

Sweeney, who fanned 520 batters this spring to give her 1,263 for her career, allowed only two Hawks to hit the ball fairly as she fanned 18 batters while walking only one, extending her scoreless innings streak to 85 in the process.

Sweeney threw 91 pitches against Stevens and 61 were for strikes as she dominated a solid-hitting lineup. Jackie Almasi opened the first inning with a walk for Stevens but was thrown out stealing for the final out of the session following two strikeouts.

After that Sweeney allowed ground balls to Iris Delgado and Brittany Lobell in the fourth and fifth innings, respectively, and fanned the final seven batters of the game.

For Rancocas Valley, which claimed the Central Jersey crown, the group title was its second but first in Group IV as they closed out their season at 31-2. Stevens, the North 2 champion that was seeking its first group crown since capturing the 2000 championship, closed out its season at 25-4-1.

The Red Devils spotted their pitcher a 1-0 lead in the top of the first and Sweeney took it from there. Heidi Smith (3-for-3) followed a strikeout with a double off the fence, and after

GROUP IV SOFTBALL

another strikeout later Sheri Bieniek looped a ball over the out-stretched glove of shortstop Kim Shjarback. Rancocas Valley added its other run in the third.

Unfortunately for Becky Garibotto her career ended on a losing note as she pitched an eight-hitter with three strikeouts and one walk. That first inning run was the first Garibotto allowed in five state tournament games.

J.P. Stevens 4, Clifton 0 — After surviving a first-inning jam Garibotto allowed only one other base-runner the rest of the way in pitching the Hawks past North Jersey I champion Clifton in the semifinals June 7.

Giving up the only two hits she allowed and hitting a batter in the first inning Garibotto retired the next 17 batters behind some solid defensive play before an error in the seventh inning interrupted the streak as she posted her 21st shutout of the year, striking out four and walking none.

Stevens gave its pitcher all the runs she would need in the second inning when the Hawks struck for a pair against Amanda Moore with the first two of four extra-base hits among the seven hits they collected. Lobell opened with a triple and strolled home on a double by Kristina Feltz, while Feltz later scored on a ground ball by Kristin Loux.

Lobell then provided the clinching blow in the third inning when she followed a walk to Caitlin Seamster with a shot over the left-field fence for her fourth home run of the season. Garibotto also had a triple, but was left stranded.

Camden's late-game surge halts Pats' winning streak

Scoring the game's final four runs in its last two at-bats Tuesday night, Camden topped Somerset 6-2 to snap the Patriots' four-game winning streak as 4249 fans looked on at Bridgewater's Commerce Bank Park.

Despite the loss the Pats (27-18) remained comfortably ahead in the South Division standings of the Atlantic League of Professional Baseball, holding a 5.5-game cushion over runnerup Camden (21-23).

The Patriots gave starting pitcher Derek Lee (3-2) a 2-0 lead but the Riversharks pulled even in the fifth inning and broke up the tie with two more runs in the eighth.

Victor Gutierrez began the go-ahead surge when he lined a leadoff double to right-center field as Ryan Radmanovich missed a sliding catch, and Jason Dellaero ripped another double to right-center to put the Sharks in front.

Lee, a lefthander, was then replaced by Shane Heams, who immediately uncorked a wild pitch to advance Dellaero to third. With the Pats' infield playing in, Brian Hunter's otherwise-routine bouncer went



over shortstop Kevin Nicholson's head for an RBI single and a 4-2 Camden lead. Rich Barrett grounded into a force play for the second out and then was thrown out stealing by catcher Ryan Kellner, his fourth assist of the night.

Lipso Nava's two-run homer off Nick Stocks in the ninth capped the scoring for the Sharks.

Tony Gsell's ground-rule double drove in the Pats' first run in the second and the lefty-swinging Radmanovich walked his fourth home run, a long-distance shot past the scoreboard in right field leading off the fourth, for a 2-0 margin.

Patriots 10, Lancaster 0 — Scott Sobkowiak delivered another dominating pitching performance and etts sparked a 15-hit attack by going 4 for 5, including his fifth home run of the year, when the Pats completed a sweep of last

weekend's three-game series at Lancaster Sunday afternoon in front of 5391 fans at Clipper Magazine Stadium.

Sobkowiak went the distance on the hill, allowing three hits and one walk while striking out 11 batters to secure his fourth triumph in six decisions. It was the second straight complete game for Sobkowiak, who hasn't yielded more than one earned run in four of his past five starts.

Betts blasted a two-out homer to right in the second inning for the game's first run and also doubled and drove in three runs. Reserve catcher Chris Eickhorst, an Immaculata High graduate and South Bound Brook resident, went 3 for 4 with a double and four RBI and Emiliano Escandon and Ray Navarrete had two hits apiece.

Correction

The photo on B-1 of last week's *Chronicle* was misidentified. Lacey Santone is actually scoring on the play at the plate against Carteret.

In The Classifieds

PLACE YOUR AD 24 HOURS A DAY, 7 DAYS A WEEK AT:

800.559.9495



Count on us Classifieds

Somerset County

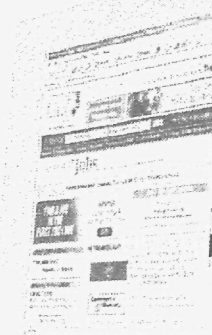
From across the street to across the state, The Reporter & nj.com has what you're looking for!

We're powered by New Jersey's largest web site for local news & information - nj.com!



Everything Jersey

www.nj.com/placead



Auto Classification 1385

Employment Classification 201

Merchandise Classification 550

Classified in-column deadline: Monday at 5 p.m.

Announcements

Adoption 105
ADOPTION: A beautiful life awaits your baby in a home filled with love and happiness. Expenses Paid. Please call Green and Ed 1-800-941-0121

ADOPT: World Travel, ball games, beaches, financial security, love, hugs and devotion awaits your baby! Expenses Paid. 1-800-558-9771

ADOPT: World travel, ball games, beaches, financial security, love, hugs and devotion awaits your baby! Expense paid. 1-800-558-9771

Announcements 110

Disclaimer: The Reporter, Messenger-Gazette and The Chronicle reserves the right to edit, reclassify or reject any classified advertising at any time and without being responsible for errors after the first day of publication. The Reporter, Messenger-Gazette and The Chronicle liability shall be limited to an adjustment for the cost of the space occupied by the error and will not be liable for failure to publish an ad.

Notices 115

Auction - Partnership, Investment Capital Reallocation. 1488+ acres offered divided: Timberland, hunting, recreational, homesites, Lincoln Wilkes Counties, GA, June 18, 10 a.m. Rowell Auctions, Inc. 800-232-8368. www.rowellauctions.com. 10% buyer's premium. GAL AU0002594

BUY NEW JERSEY FOR \$399
The New Jersey Press Association can place your 25 word classified ad in over 150 NJ newspapers throughout the state's combined circulation of over 2 million households. Call Diane Trent at NJPA at 609-406-0600 ext. 24, email dntrent@njpa.org or visit www.njpa.org for more information. (Nationwide placement available)

Each week hundred of Public Notices are published in New Jersey's daily and weekly newspapers! The New Jersey Press Association has created a Internet database where these notices are posted, njpublicnotices.com.

You have access 24 hours a day, 7 days a week to statewide sheriff sales, foreclosures, RFP, bids for schools, town meetings, variances, plus many other types. Search for notices manually or subscribe to Smart Search and have notices sent to your email address automatically. Go to: www.njpublicnotices.com for more information and to subscribe.

Notices 115

REACH OVER 1.5 MILLION HOUSEHOLDS!
The New Jersey Press Association can place your 25 word classified ad in over 150 NJ newspapers for ONLY \$1099. Call Diane Trent at NJPA at 609-406-0600 ext. 24 or email dntrent@njpa.org for more information. Regional Rated Now Available in New Jersey! (Nationwide placement available)

Employment

Education 201

PRESCHOOL DIRECTOR

FT: Must have a BA degree in Early Childhood Development and 2 yrs experience in managing and overseeing staff. Call Pastor Ozlie Pursell Frenchtown Community Fellowship Learning Center 908-996-2370

Employment Agencies

205

Immediate Job Openings! STAFFING ALTERNATIVES
Call 732-246-1687

Drivers 230

DRIVER

CDL Bus Driver for Summer Day Camp. Competitive salary and fun environment. Jun 27th - Aug 15th. Call for interview 908-876-3429

DRIVER

LowBoy and tandem drivers. experienced only with CDL-A clean record a must. Call 908-874-3980

DRIVERS

40 cpm starting pay for 3 mos. exp. Been driving longer? Start up to 42 cpm with full benefits. monthly bonus your Freightliner goes home with you every 14 days. Own a truck? Avg. over \$1 per mile - 90 cpm + fuel surcharge, paid plates permits. 1-877-452-5627. Ask about lease/purchase options. 3 mos. class A exp. required.

DRIVERS

COVENANT TRANSPORT. Regional Runs Available. Home Weekly. Excellent Pay & Benefits. Experienced Drivers. O/O & Students Welcome. Equal Opportunity Employer. 888-MOREPAY (888-667-5729)

DRIVERS

DUMP TRUCKS

Tandem dump truck. Must have valid CDL. Be experienced and have refs. RDR CONTRACTING (908)996-6856

Drivers 230

DRIVERS

REGIONAL: No NYC, EZ Pass, CDL A/Hazmat w/ 1 year experience. Immediate approval. Co. Pay: 42 cpm, O/O pay: \$1.16 pm. CALL NOW! (800)476-2070 www.arnoldtrans.com

DRIVER

Wanted for Auto parts store. Ask for Dean or Darryl. 908-782-4440

DRIVER/WAREHOUSE

For plastic distributor in Branchburg. Some Heavy lifting. Good pay & bnfts. No CDL. 908-534-6111

TRUCK DRIVERS

In New Jersey Heartland drivers earned an average of \$54,410.76 more in 2004! With our pay raise they'll earn even more! Do you make this much AND get home most week-ends? HEARTLAND EXPRESS 1-866-262-5861. www.heartlandexpress.com

General Help 240

ACCESS A NEW CAREER IN HEALTHCARE

Training in Massage Therapy, Medical Assistant, Medical Billing Coding, Surgical Technologist, The Chubb Institute! Call 1-888-956-7777.NOW!

General Help 240

DELIVERY DRIVER

FT counter position. Monday-Friday 5:30am-3:30pm. No week-ends. Bring home approx. \$500/wk. Flemington 908-788-7117

ELECTRICIAN

Exp'd Res. Comm. & Ind. Benefits avail. immen. Ace Elec Serv. 908-534-2404

GRANITE FABRICATOR

87 year old company seeks experienced granite countertop installer, fabricator, and bridge saw operator. Excellent pay and benefits. OT, bonuses, medical, 401k. Flemington, NJ. EOE 908-782-7773

HAIR STYLIST

Salon for kids looking for PT/FT cutter for always busy salon. Incredible pay, great tips. 2 weeks vacation, bonuses, health insurance available. Call Tony 908-598-0900

PAINTERS

Min 5 yrs exp. own trans., good pay, long term. 908-284-9008

General Help 240

AMERICA'S AIR FORCE

Jobs available in over 150 careers, plus:

- * Enlistment Bonuses for certain careers
- * Up to \$10,000 Student Loan Repayment
- * Up to 100% Tuition assistance
- * High Tech training

High school grads age 17-27 call 1-800-423-USA or visit AIRFORCE.COM

U.S. AIR FORCE CROSS INTO THE BLUE

CARPENTERS

Experienced carpenters & helpers needed for busy framing crew. Own trans. Call 908-788-7203

CHILD CARE

Work in your own home. Apply at Monday-Morning Inc. 908/526-4884

CLERICAL

PT, 10-5, 5 days/wk. Duties include answering phones, filing, some paperwork. 908-534-6024

COLLEGE STUDENTS & '05 HS GRAD'S

Exc. pay, flex. schedules, will train, scholarships avail. Call now! All ages 17 & older may apply. Sales/service & comm. exp. Please call 908-575-1007

RECEPTIONIST

FT/PT to work in very busy day/beauty spa. Computer & sales skills preferred. New Providence. Call Susan at: 908-542-9282

Receptionist/Office Assistant

Pt with potential for FT. Cheerleading Academy in Bridgewater seeks energetic and positive person for immediate opening. Good phone pay & basic computer skills a must. Email resume to njatl1@aol.com or fax to 732-568-1771. Att: Matt

SALES REPRESENTATIVES

WE ARE SO CONFIDENT IN OUR LEADS WE PAY YOU TO RUN THEM EVEN IF YOU DON'T SELL. Are you a self-motivated positive person? Are you presently earning \$1,000 - \$1,500 per week? Qualified guaranteed income during training period. Qualified \$2000 SIGN-ON BONUS. We offer a solid training program with 23 Pre-set qualified confirmed leads daily. With our "NEW" credit process means all leads are pre-approved before you run the appointments. Management opportunities. Unlimited income potential. Call: ERIC 888-566-9144

NEW DERMATOLOGY PRACTICE

Opening in Flemington in the Fair-EC. Accepting Applications for FRONT DESK BILLING MEDICAL ASSISTANTS OFFICE MANAGER. Send Resumes to: 32-70 36th Street, LONG ISLAND CITY, NY 11106

SECRETARY/DISPATCHER

PT. Will train. Call 908-256-4220

General Help 240

INSULATION INSTALLER

FT for Hunterdon City Co. Drivers license req. Benefits avail. No exp. necessary. 908-534-2108

LANDSCAPE DESIGNER

Full-Time/Part-Time: Self motivated individual with field experience, computer & drafting skills. 908-371-1291

LANDSCAPE MAINTENANCE LABORER

FT. \$11 per hour. Benefits including medical. Call: 908-782-9181 or 908-319-3646

MECHANIC ASSISTANT

Must have valid DL & experience driving small dump trucks. Some repair experience required. 908-371-1291

OFFICE ASSISTANT

Self motivated individual with clerical and computer skills. 908-371-1291

RECEPTIONIST

FT/PT to work in very busy day/beauty spa. Computer & sales skills preferred. New Providence. Call Susan at: 908-542-9282

Receptionist/Office Assistant

Pt with potential for FT. Cheerleading Academy in Bridgewater seeks energetic and positive person for immediate opening. Good phone pay & basic computer skills a must. Email resume to njatl1@aol.com or fax to 732-568-1771. Att: Matt

SALES REPRESENTATIVES

WE ARE SO CONFIDENT IN OUR LEADS WE PAY YOU TO RUN THEM EVEN IF YOU DON'T SELL. Are you a self-motivated positive person? Are you presently earning \$1,000 - \$1,500 per week? Qualified guaranteed income during training period. Qualified \$2000 SIGN-ON BONUS. We offer a solid training program with 23 Pre-set qualified confirmed leads daily. With our "NEW" credit process means all leads are pre-approved before you run the appointments. Management opportunities. Unlimited income potential. Call: ERIC 888-566-9144

NEW DERMATOLOGY PRACTICE

Opening in Flemington in the Fair-EC. Accepting Applications for FRONT DESK BILLING MEDICAL ASSISTANTS OFFICE MANAGER. Send Resumes to: 32-70 36th Street, LONG ISLAND CITY, NY 11106

SECRETARY/DISPATCHER

PT. Will train. Call 908-256-4220

General Help 240

SALES TRAINING MANAGER

Easton Publishing Company and NJN Publishing Company, with 18 community newspapers and two of the area's leading websites, has an immediate opening for a Sales Training Manager in our Asbury, NJ telecenter.

Our Sales Training Manager will be responsible for all aspects of sales, product, market and system training for our inside sales and support teams. Training programs for both new employees orientation as well as ongoing professional development programs for existing employees will be part of the Sales Training Manager's responsibility. The development and continuous updating of all training materials, scheduling, feedback and follow up are all part of this exciting position.

Send your resume to: Sherry M. Ferello NJN Publishing Company PO Box 32 Flemington, NJ 08822

TELLER

FT. Immediate opening at Regent FCU, Milford Office. Competitive wages & benefits. Please call Deb at 908-995-2326 ext. 232

VAN/FLATBED DRIVER

FT/PT for very busy towing company. Will train. Call 908-256-4220

Medical Help 250

DENTAL ASSISTANT/RECEPTIONIST

PT for dental office in Somerville. X-ray certification a plus. 973-584-8363

MEDICAL ASSISTANT

FT. Busy Haddonfield practice. Great staff, compensation and benefits. Fax resume to 908-895-0013

NEW DERMATOLOGY PRACTICE

Opening in Flemington in the Fair-EC. Accepting Applications for FRONT DESK BILLING MEDICAL ASSISTANTS OFFICE MANAGER. Send Resumes to: 32-70 36th Street, LONG ISLAND CITY, NY 11106

SECRETARY/DISPATCHER

PT. Will train. Call 908-256-4220

General Help 240

SUMMER CAMP COUNSELORS (5)

Needed to work with Pre-K, K, and 1st grades, or with 4 & 5th grades. Send resume to: PO Box 2255, Flemington, NJ 08822 or email to: flemingtonparks@earthlink.net. No phone inquiries please.

SWIMMING POOL SERVICE

FT: experience preferred. 908-638-9393

SWIM TEACHERS WSI

With experience \$15.50 to start begin September in Berkeley Heights. 908-464-1995

TEACHER NATURALISTS

To conduct summer day camps in Badminton/Hillsborough. More info: rovingnature.com Apply: Roving Nature Center PO Box 28, Oldwick, NJ 08858. Or Call: 908-439-1201

TELLER

FT. Immediate opening at Regent FCU, Milford Office. Competitive wages & benefits. Please call Deb at 908-995-2326 ext. 232

VAN/FLATBED DRIVER

FT/PT for very busy towing company. Will train. Call 908-256-4220

Medical Help 250

DENTAL ASSISTANT/RECEPTIONIST

PT for dental office in Somerville. X-ray certification a plus. 973-584-8363

MEDICAL ASSISTANT

FT. Busy Haddonfield practice. Great staff, compensation and benefits. Fax resume to 908-895-0013

NEW DERMATOLOGY PRACTICE

Opening in Flemington in the Fair-EC. Accepting Applications for FRONT DESK BILLING MEDICAL ASSISTANTS OFFICE MANAGER. Send Resumes to: 32-70 36th Street, LONG ISLAND CITY, NY 11106

SECRETARY/DISPATCHER

PT. Will train. Call 908-256-4220

Medical Help 250

PHYSICAL THERAPIST

Immediate opening for FT/PT physical therapist to work in the school system in Warren County. Offering \$30-\$40/Hour + benefits. Fax resume to: Sam's Kids Physical Therapy 908-454-6279

RNs/LPNs/CNAs

Rolling Hills Care Center. Become an integral part of our team. All FT and PT Shifts available.

Competitive Salary/Benefits

- *Shift Differential
- *Paid Holiday's
- *Vacation
- *Weekend Bonus
- *Paid Sick Time
- *Personal Day's
- *Uniform Allowance

Please call the DON for 908-236-2011 ext. 14

Part Time Help 255

CUSTODIAN

Weekend & Evening Hours. Liberty Village Premium Outlets. Management of floor, cleaning, Apply in person, 10am-4pm, daily. EOE Fax to: 908-782-2994

OFFICE HELP

20hrs per week. Quick. Bilingual. Call 908-823-9393

OFFICE HELP

In German, French, Spanish, Polish 908-526-1717

P/T OFFICE HELP

A.P. some purchasing, answering phones. Computer experience a must. Year-round position. Call 908-377-9508 in Madison.

SECURITY

Weekend & Evening Hrs. Liberty Village Premium Outlets Mgmt office, Flemington. Apply in person, 10am-4pm. EOE Fax 908-782-2994

* SUMMER * PART-TIME DELIVERY DRIVERS

Approximately 8 hours on Wednesday afternoons and evenings for the summer months delivering newspapers to states, machines and fleet offices. Ideal applicant knows Hunterdon County towns and surrounding areas, and has a full size van with able to carry 1,500 pounds.

Interested?

Call John at (908) 782-4747 x607 Hunterdon County Democrat 8 Minneaking Rd Flemington, NJ

SUMMER POSITIONS AVAILABLE Part Time in Circulation

We are seeking for two individuals with outgoing personalities to take over the circulation duties for the Hunterdon County Democrat. Working Thursday-Sunday, 25 and a week later morning & afternoon hours. \$4.50 per hour plus commission. It was after the talent, drive and strong sales and customer service skills are met, then we may have a perfect match, and we are interested in talking to you.

Send resumes to: Sherry Ferello at: Sferello@njnpublishing.com or reference PT Circulation or fax to: 908-782-5409

TEMPORARY Part Time DELIVERY DRIVERS

Drive delivery van with delivery newspapers to homes and businesses. Must be 21 years old, have a valid driver's license, and be able to carry 1,500 pounds. Working Thursday-Sunday, 25 and a week later morning & afternoon hours. \$4.50 per hour plus commission. It was after the talent, drive and strong sales and customer service skills are met, then we may have a perfect match, and we are interested in talking to you.

Send your resume with salary requirements to: SHERRY M. FERELLO NJN PUBLISHING COMPANY 8 MINNEAKING ROAD PO BOX 32 FLEMINGTON, NJ 08822

Or Email to: sferello@njnpublishing.com

LUGGAGE FACTORY

NJ's Largest Luggage and Travel Goods Store is now hiring for the following positions: Sales Associates Full or Part Time Key Holder's Full or Part Time Receiving/Shipping Clerks Full or Part Time Apply in person: 76 Rt.202 Fingoes NJ 08551 or Fax resume to 908-788-2832 or email to: jobs@luggagefactory.com

SALES

New Mortgage Banker in Flemington has 2 openings for motivated L.O's. Ground floor capty. Aggressive comp up to 50K. As well as rel. bonuses. Call Adam 908-788-0707

SALES

Seeking sales professional 189K plus first year potential. 800-359-4336 x4021

SALES

Seeking sales professional 189K plus first year potential. 800-359-4336 x4021

Real Estate Sales

Acreage & Lots 305

COASTAL CAROLINA BUY NOW - READY. Winding River Plantation offers the best in coastal living with unparalleled amenities: private oceanfront beach clubhouse, riverhouse with marina, pools, tennis courts, walking/biking trails, 27-hole Fred Couples signature Carolina National Golf Course. Between Wilmington, NC and Myrtle Beach, SC. "Priced to Sell" homesites from \$30,000's. Deepwater homesites with intra-coastal access \$385K + Homes also available. Stacks Realty, Inc. 866-585-2885. www.stacksrealestate.com

Commercial Property

For Sale 315

DELAWARE TWP-SHOPPING CENTER/STRIP MALL FOR SALE - Vacant 5 stores, 8990 sq ft, situated on 3.46 acres, State Highway 12. Must Be Seen! Asking \$1,600,000. Century 21 Barroo Realtors 1-800-310-7902

Condos & Townhouses

320

All real estate advertising in this newspaper is subject to the Federal Fair Housing Amendments Act and the New Jersey Civil Rights Law, which make it illegal to advertise any preference, limitation or discrimination based on race, color, religion, sex, national origin, handicap, familial status, creed, ancestry, marital status, or sexual orientation, or on intention to make any such preference, limitation or discrimination. Familial status includes children under the age of 18 living with parents or legal custodians, pregnant women and people securing custody of children under 18. This newspaper will not knowingly accept any advertising for real estate which is in violation of the law. To report discrimination, call the Office of Fair Housing and Equal Opportunity of the U.S. Department of Housing and Urban Development (HUD) at 1-800-669-9777. The HUD TTY telephone number for the hearing impaired is 212-708-1455.

FLEMINGTON - Sunridge, 3 BR, 2.5 Bath, Asking \$329K. Great investment, rents for \$2K/mo. 908-328-1515 or 908-788-7169

Glen Gardner - Fresh, Open, Bright. Describes this move in condition, 1 BR cond w/ many brand new appl., Beaut. wood flrs, 3 decks, 1 car gar., FP, den, 5 min. from historic downtown Clinton and Interstate 78. Call Now Loretta Murphy, REMAX, direct 908-507-7352

Condos & Townhouses

320

GREEN BROOK - End unit, 2/3BR, 3.5 BA, Cherry Hard wood flrs, \$421,900. 908-419-0671

LEBANON BOROUGH - Grist Mill Village Condos, 55+ for sale by owner, 1st floor, 1BR, den, 1.5BA, kit., LR, A/C, gas heat, 300 square foot bsmt, small deck, newly painted, all appliances incl, pets allowed. \$187,500. Call for an appt 908-238-4193

Homes For Sale 330

A NO DOWN PMT LOAN Call Today To Qualify For A Special NO-Money Down Low Closing Cost Conventional mortgage. Act Now While Funding Lastest Call **Arnie Joffe** at Ivanhoe Financial, Inc. 7 days/24 hrs. Toll Free 1-877-209-9495

EAST AMWELL TWP F580 - Cottage Cape, Hopewell mailing add, ex. loc. 9 mi. Princeton & 4 mi. Hopewell Boro. Sourdland Mt. loc. East Amwell Twp. School Dist. HOHRS., 2 BR, 1 BA, LR/FR, all appl. incl. \$330,000. MUST SEE!! 609-466-2353

HACKETTSTOWN 2 FAM. INVESTMENT DUPLEX, 2 BR, LR, DR, BA, spaciuous kit., each side, porch, lg. yard. \$339K. 908-876-4373

HAMPTON - Colonial 3BR, 2BA, central A/C, finished bsmt, easy access to route 33/178. 908-537-6308

QUAKERTOWN - Charming, Country, Primitive, Quaker town Rd. Historical 6 room colonial, 2 bedroom, beam ceilings and pine floors, cottage and barn. Must be seen. Asking \$329,900. Century 21 Barroo Realtors, Call 1-800-310-7902

WIND GAP, PA - small private adult community on a beautiful mountain lake. 2 lakefront ranch homes, 3BR, 2BA, decks, C/A/C, etc. A fabulous loc., live the life you deserve, \$115K & \$129K. Call Bob 610-381-6024

Open Houses 331

Open House - Sun. 1-5pm, Lebanon Twp. - 4 BR, 2 BA, pool, patio, deck, pvt. parking, \$438,000. 302 JEFFREY LANE, GLEN GARDNER, NJ 908-537-4197

New Construction 332

HOLLAND TWP - Custom homes to be built to your specs. Available in new 7 lot subdivision, 5+ acres, lot + home starting at \$600,000+. 908-996-3183

Investment Properties 342

DUPLEX in Lewisburg, PA near Bucknell University rented for 2005-2006. \$209,000. Call Linda Treese at 570-523-2344

Out of State Property

355

CATSKILL Mtn SACRIFICIAL 6 acres - \$21,900. Woods, fields, views, stone wall! Beautiful blg site less than 3 hours NYC! Terms avail! Won't last! 866-262-9608

COASTAL GEORGIA - Water access, marshfront homesites. Gated community, tennis, golf, kayaking, canoeing. Preconstruction discounts, limited time. From the mid - \$70's. 1-877-268-7376. www.cooperspoint.com

Vacation Property For Sale 380

LAKE ANNA, Virginia's Best Kept Secret exclusive waterfront properties, great vacation or investment homes, Call Docksider Realty for more information 800-242-LAKE. Visit us at www.docksiderrealty.com

"MAKE THIS SUMMER THE BEST" E Tennessee's Norris Lake and Golf properties will make every year special. Starting at only \$24,300 - Call Lakesider Realty 432-626-5820. www.lakesiderrealty.com

Real Estate Rentals

Apartments 405

ALPHA - 2 bedroom, quiet, washer, dryer hookup, new carpeting, \$850. Call 908-310-2408

Clinton area charming 2 BR apt. on beautiful horse farm. Eat in kit. \$1200/mo. Call 908-735-9498

CLINTON GARDENS - Spacious 1br apt. DW, AC, patio, balcony, laundry, ample parking. Junction of 22, 31 & 78. Walk to town. 973-635-1163 or 908-735-2994

FLEMINGTON - 1 BD, 1 bath, kitchen, pvt entrance, w/d hkp, newly remod. Victorian, year \$825/mo. 908-735-6991

FLEMINGTON BORO - bright and cheery 2 BR apt, 1.5BA in town, all appliances, safe & secure, off street parking, Credit chk & refs required. Avail 7/31. Owner is licensed NJ Realtor. \$1500/mo Call Angela 908-310-3946

FLEMINGTON/Regional Court Apts - 2 Br garden, LR, DP, BA, Kit., hardwood flrs, appl., ht, cook gas, & bsmt stor. inc. Exc. Location w/off site pkg. & LINK pickups. No PETS! 1 yr lse, \$950/mo + 1 1/2 mo. sec. Ref's req'd. 908-806-5383

GLEN GARDNER - 3 bedroom Row Home, end unit, porch, yard, park, Clinton School district. Nice neighborhood. Required ref. Prefer non-smoking. Avail July 1. \$1000/Mo. + 1 month security plus heat/utility. 908-537-4722

MILFORD - 2BR, 1 Bath, Living Room, Eat In Kitchen, Walk to Town, W/D Hook Up, Yard, Off Street Parking, Heat and HW inc., Pets Welcome. Avail 7/15. 9950. 908-246-9019.

Piscataway - 2 BR, \$900/mo, 1 1/2 mo sec. 732-424-9351

Real Estate Rentals

Apartments 405

NEW HAMPTON - 2 bedroom 1st floor apartment, located along Musconetcong River. No children or pets. dryer hookup only. \$925 per month. Call 908-537-2778 or 908-453-3710 for details.

NORTH PLAINFIELD - 4 rooms, \$815 + utils, prtg. laundry. NO PETS. Ref's. 908-561-5085 aft. 6pm.

RARITAN - Lovely Spacious 1BR, private entrance, Single dwelling, no smoking & no pets \$1000/mo 908-526-4399 5pm-9pm

SO. BOUND BROOK - 3 BR., new paint/carpet, looks great, \$1550/mo + utils. 973-632-2306

SOMERVILLE available immediately. Lovely 1 & 2 BR apts, many extras. A must see! 973-857-5979

Commercial Property

For Rent 410

Westfield Retail/Office 525 Central Ave. Up to 5500 sq. ft. avail. 908-789-2562

Houses For Rent 430

FLEMINGTON BORO - 3BR, 2BA, EIK, LR, DR, Fam. Rm, w/d, new carpet & appl., swr/wtr/garbage incl. Off St. Pkg. close to NYC trans. \$1650+utils. 609-397-8379

NEW PROVIDENCE - 3 large BR, 2.5 BA, LR, D's, Kitchen A/C, W/D, Refridg., \$2100/mo. Avail 7/1, no pets. 908-322-3843

RINGOES - Newly renovated large 3BR, 2 full BA, LR w/FP, DR, den, W/D in utility room, D/W, full fin. basement w/ bar. A/C, \$1950/mo. 215-397-6852

WHITEHOUSE - Cottage on private estate, \$900/mo. incl. utils., avail 7/1, no pets. 908-534-5118

FLEMINGTON - 3 BR ranch, C/A gar., rec rm, screened porch, avail Aug. 1st \$1500/mo + utils. 1 1/2 mo sec., ref's. 908-806-0566

Housing To Share 435

GREENBROOK - Shared Housing in Greenbrook, townhome BR w/ private bath, kit, utilities included, no smoking, ref., employ verif. Call 908-419-6978

SOUTH BOUND BROOK - share spaciuous apt., off st. pkg., quiet neighborhood, \$600 + 1/2 utils. 908-656-4275

Townhouses/Condos

For Rent 475

CLINTON - Beaver Brook, 1BR, 1BA upper end unit, backs to golf course, all appl, \$1250/mo. + utils. 1 1/2 mo. sec. dep. 908-534-4472

CLINTON - Beaver Brook, Lovely 1 BR. All appl. incl. Close to 78 & 22. \$1150/mo. call 908-534-6905

READINGTON HUNTERS CROSSING - 3 BR, 1ST FL end unit, lg. LV, 2 BA, EIK, spaciuous unit, peaceful setting, \$1625 908-303-3862

READINGTON HUNTERS CROSSING - 1 BR/DEN/PL, lg LV & DR, sleeps 4 w/pullout designer colors, beautifully finished, quiet area, \$1295 908-303-3862

Townhouses/Condos

For Rent 475

BRIDGEWATER 3 BR, 1.5 bath condo, kit., LR, DR, lower end unit, backs to woods. Near Rts 22, 78, 287 & 202/206. Pets ok! \$1850/mo. + utils. 1.5 mo sec. 908-572-4317.

Vacation Property For Rent 480

LAVALLETTE - 3 BR home, outside closed shower, 1 bkg ocean, A/C. Avail w/dy 8/5 thru Labor day 908-233-1122

LEI NORTH BEACH, Bay Side contemporary, 4 BR, 2 1/2 baths, AC, 2 decks, si amenities. Avail August weeks, \$2600/week. Call 908-788-9410

Long Beach Island 2nd off beach, sleeps 8 Call 908-464-5374

SEASIDE PARK - 300 ft. to beach, 4 BR, June & Sept. \$1000. July & Aug. \$1400. 732-530-0848

SOMERSET & MIDDLESEX MORTGAGE RATES

Program	Rate	pts	%dn	lip	APR
Absolute Mortgage Co. 877-606-RATE					
30-yr. Fixed	5.125	0.00	5%	30	5.155
20-yr. Fixed	5.000	0.00	5%	30	5.030
15-yr. Fixed	4.875	0.00	5%	30	4.895
30-yr. Jumbo	5.625	0.00	10%	30	5.655
5/1 ARM	4.625	0.00	5%	30	4.655
15-yr. Jumbo	5.250	0.00	10%	30	5.280
Lowest Rates! Free Float-Downs! Fees are Only \$399. www.absolute-mortgage.com					
Aapex Mortgage 800-344-2739					
30-yr. Fixed	4.875	2.00	5%	30	5.129
15-yr. Fixed	4.500	2.00	5%	30	4.955
30-yr. Jumbo	5.000	2.00	5%	30	5.209
15-yr. Jumbo	4.625	2.00	5%	30	4.980
1.25% loans, 100% financing, Jumbo Loan specialists, weekend loans, 100% stated, 100% investment.					
AHM Mortgage 800-924-9091					
30-yr. Fixed	5.375	0.00	5%	60	5.390
30-yr. Jumbo	5.625	0.00	5%	45	5.660
15-yr. Fixed	5.000	0.00	5%	45	5.040
5/1 ARM	4.750	0.00	5%	45	4.610
5/1 Jbo. ARM	4.875	0.00	5%	45	4.730
Direct Lender! No Income Loans! No Broker fee, Orig. or App. Fee! No Cost Refi Avail! Close at Home! Princeton					
Equalloan.com 877-877-6364					
30-yr. ARM	5.250	0.00	5%	30	5.250
15-yr. Fixed	5.000	0.00	5%	30	5.000
30-yr. Jumbo	5.625	0.00	5%	30	5.625
3/1 ARM	4.500	0.00	5%	30	5.301
Never Pay A Lender Fee.					
ditech.com 800-616-8208					
30-yr. Fixed	5.375	2.00	20%	60	5.677
15-yr. Fixed	4.750	2.00	20%	60	5.256
30-yr. Jumbo	5.625	2.00	20%	60	5.874
15-yr. Jumbo	5.125	2.00	20%	60	5.541
Se habla Espanol. Your mortgage solution. Delivered! Apply now at ditech.com					
Lighthouse Mortgage 800-784-1331					
30-yr. Fixed	5.250	0.00	5%	30	5.338
15-yr. Fixed	4.875	0.00	5%	30	4.963
20-yr. Fixed	5.125	0.00	5%	30	5.239
30-yr. Jumbo	5.625	0.00	10%	30	5.739
5/1 conf. ARM	4.500	0.00	5%	30	4.588
Consistently Low Rates. Open 7 Days a week 9-9.					
Loan Search 800-591-3279					
30-yr. Fixed	5.500	0.00	5%	60	5.552
15-yr. Fixed	5.000	0.00	10%	70	5.032
10/1 arm Jumbo	5.125	0.00	10%	90	5.440
5/1 arm Jumbo	4.625	0.00	10%	90	5.573
www.LoanSearch.com NJ's Lowest Mortgage Rates! Jumbo Specialists					
Partners Mortgage 888-RATE-SALE					
30-yr. Fixed	4.875	2.00	5%	60	4.920
15-yr. Fixed	4.375	2.00	5%	60	4.410
30-yr. Jumbo	5.250	2.00	5%	60	5.290
15-yr. Jumbo	4.750	2.00	5%	60	4.790
Zero Points, Zero Fee Loans Available, Free Refinance forever. Partners-Mortgage.com. Hablamos Espanol.					
Peapack-Gladstone Bank 908-719-6555					
30-yr. Fixed	5.750	0.00	5%	45	5.859
30-yr. Jumbo	6.000	0.00	5%	45	6.074
15-yr. Fixed	5.375	0.00	5%	90	5.501
15/30 balloon	5.750	0.00	5%	90	5.845
3/1 libor int. only	4.875	0.00	5%	90	5.809
Call for Low Doc Loans					
Penn Federal Savings Bank 908-719-2468					
30-yr. mod inc.	5.375	0.00	5%	60	5.380
30-yr. Jbo bi-wkly	5.375	0.00	10%	60	5.380
20-yr. Jumbo	5.500	0.00	10%	60	5.520
15-yr. Jumbo	5.125	0.00	10%	60	5.150
5/1 Jumbo arm	4.750	0.00	10%	60	5.600
12-month rate locks available. The lowest Jumbo rates!					
RSI-The Raway Savings Institution 866-259-6884					
15-yr. Fixed	5.125	1.00	5%	-	5.185
3/30 ARM	4.500	1.00	5%	-	5.428
5/1/30 ARM	4.750	1.00	5%	-	5.620
5/5/30 ARM	4.750	1.00	5%	-	5.504
7/1/30 ARM	5.000	1.00	5%	-	5.525
ARM Loan Limits up to \$600,000. Float down options available on ARM programs.					
Summit Federal Savings 732-968-0665					
30-yr. Fixed	6.125	0.00	20%	75	6.174
15-yr. Fixed	5.125	0.00	20%	75	5.191
10-yr. Fixed	4.875	0.00	20%	75	4.965
10-yr. Fixed	4.250	2.00	20%	75	4.764
30-yr. ARM	3.000	0.00	20%	75	5.390
10-yr, 15-yr and 1-yr. ARM to \$500,000 depending on downpayment. 60 day commitment. Lock-in at application.					

The Reporter |

Experienced. Motivated.
Excellent people skills.
Available immediately.

You can count on us to handle all
of your recruitment advertising needs!

Call 800-559-9495 or click: www.NJ.com/placead

for more information on our recruitment advertising programs

QUALIFIED. RESULTS-ORIENTED.

Reach new hires from across the street or across the state with a recruitment ad in The Reporter and NJ.com. Your ad will be seen by over 1.1 million* potential hires every month. Another bonus - the affordable price won't blow your budget. Call or click for more information.

Source: Advance Internet 2004 Monthly Statistics

Vacation Property for Rent 480

VIRGINIA BEACH, VA - Deluxe studio off, on beach @ 16th St., in the Boardwalk Resorts, sleeps 2 w/ kitchenette, on-site pkg. & all amenities, Sat. 7/23/05, \$1200/week 973-703-2919 ask for Tom

West Coast Vacation Cabin - Rental mile from entrance to Mt. Rainier National Park, Washington State. Sleeps 4 people, fully furnished incl. TV, VCR/DVD and satellite radio. Rental includes national Park Admission pass, use of snowshoes, mountain bikes, and hiking equipment. Easy walking distance to terrific restaurant. Avail. by the week (\$735) or weekends (Fri-Sun \$935). Call owner at: (541)760-1261. Leave e-mail address. Photos available.

Acres for Rent 483

FARM LAND FOR RENT Monmouth County. Please call to discuss terms. 732-262-4448

Wanted To Rent 485

UNITED STATES POSTAL SERVICE
REQUEST FOR PROPOSALS
STEWARTSVILLE, NJ
The United States Postal Service is soliciting proposals in STEWARTSVILLE, NJ in Warren County for new leased construction, OR existing space for lease and renovation, OR vacant land for new Main Post Office. New Construction should be approximately 5,075 net square feet. Vacant land should be no less than 43,560 Sq. Ft. or more, 60,000 Sq. Ft. A description of the projects contained in the USPS "Solicitation for Proposals" available at the STEWARTSVILLE, NJ Post Office, or by request at the address below. The preferred area of consideration should be within the following boundaries: NORTH RTE 57; SOUTH RTE. 79; EAST-STEWARTSVILLE ROAD- RTE 519. Requests for construction, Postal Plans, and specifications for new construction (only) must include a certified check or money order for \$15,000 made out to "USPS District Office". Offers made on behalf of an owner, must include an exclusive brokerage or letter of agreement from the owner to represent the property. All offers must be received by the close of business, July 15, 2005. Solicitation Packages can be obtained from: Gregory Lackey, Real Estate Specialist, US Postal Service, 2 Hudson Place 6th Floor, Haddonfield, NJ 07930 or order on the Internet: http://www.1eps.gov/spe/USPS/FP/NYFSD/pos/latePreDays_1.html

Merchandise

Building Material & Equipment 520

FIAT ALLIS FDS - 6 way 8' blade, recent engine & undercarriage, JD 750ELC w/thumb, Kobelco LK600 4.25 yd wheel loader. 908-755-4431

Furniture 560

6 PC CRIB SET - Simmons White washed, 3&4 drawer dressers w/dishable chg. table, glider & Ottoman, exc. cond. \$1100 908-788-5770

Beautiful Sofa Set - Light blue w/white flowers. Paid \$2400 asking \$495. obo 908-369-4137

BEDROOM SET - 7 pcs., sleigh bed, dresser, mirror, chest & nite stand. List \$2200. Sell \$975. New in box, can deliver. Call 732-259-6690

BEDROOM SET - Boys 4 pc. Loft, from this End Up. \$400. 908-284-4747

DINING ROOM - Antique Pine Table, 8 upholstered chairs, French Country \$2000. Will E-mail Picture 908-598-7443

Dining Room - double pedestal table, 8 chairs, lighted hutch. Still in box. Value \$3000 - sacrifice \$1500 call 732-259-6690

Dining Room Set - cherry table, 5 chairs, china cabinet, good cond. \$350. 732-356-2974 after 6pm.

DINING ROOM SET - Thomasville 8 pcs, solid mahogany graced in a chip pendant style, 80x45 glass top table, seat 8 comfortably. 60" LX 60" china cabinet. New set with lighted interior, ample storage & silver drawer, 4 side & 2 arm chairs can pick this extraordinary set perfect for traditional formal room. New roof over \$10,000 asking \$4800. Call email photos 908-730-6803

Dining Room Set - Thomasville, cherry wood, cor. hutch, 8 chairs, 20" table, \$2900. Call 908-534-2273 after 4:30pm.

FAMILY ROOM FURN. - Sofa & love seat, dual reclining, rm/bdr, 5 yrs. old, exc. cond., 80x60 table, \$300. 908-604-9239

LIVING RM NEW \$299 incl sofa, wash/dry. Also model house furniture. Can deliver 908-281-7117

Mattress & Box Sets New \$139 New table chairs \$149 Also model house furn. Can deliver 908-281-7117

Furniture 560

MATTRESS SET - King plush pillow top, new in plastic w/warranty sell \$250 732-259-6690

MATTRESS SET - Queen pillow top, brand name new w/warranty, \$135 732-259-6690

PATIO FURNITURE - 54 in. round table, w/wooden glass top, umbrella w/stand, 4 arm chairs, end table w/ glass top, chrome lounge, \$300 obo exc. cond. 908-234-0213

PATIO FURNITURE - white wrought iron, love seat, 2 chrs. 2 coffee table, set, cushions incl. \$275 exc. cond. 732-968-5480 w. msg.

TABLE - BLACK MARBLE - simple elegant, 35"x70"x27" great for rm/office/outdoors. \$800 908-522-1909

Bargain Basement 573

COFFEE TABLE & 2 matching end tables, dark wood, \$75, good cond. 732-356-2974 after 6pm

Items Under \$100 575

Barn Cats - Outdoor cats all spayed/neutered, tested, up to date on vaccs, and dewormed. Call 732-572-7405

General Merchandise 580

ABSOLUTELY NO COST TO YOU! BRAND NEW POWER WHEELCHAIRS, SCOOTERS, HOSPITAL BEDS AND DIALYTIC SUPPLIES CALL 1-800-843-9199 OR SEE IF YOU QUALIFY. NJ LOCATION.

BATHROOM OAK VANITY - w/corbin top, and moon faucet, 36 in. W x 21 in. D x 34 in. H. \$125 908-221-9337

CHINA - Lenox/Kingston, 6 pc. dinnerware, service for 12 rarely used, sold as set, \$950 908-730-6807

LUMBER FOR SALE - Walnut, Cherry, Oak, Poplar, Maple, 2" per board ft. 908-797-0583

POWER WHEEL CHAIR - P5 Ras cal Turnabout, paid \$6,000, willing to sacrifice call w/offer 908-534-4996 After 7pm.

Snow Blower Ariens 824 - 24" 8HP. Elec. start, 8 spd, new, w/8 hrs use. \$699. 908-534-2513

******* SPA & HOT TUB COVERS** \$99 & UP. Cover lifts \$169. 888-772-7810

Lawn & Garden 581

DARK RICH SCREENED TOP SOIL - 10 yds. \$250. Fill Dirt, \$150. Leave Message. 908-534-4766

HONDA 454 TRACTOR - 14 hp, hydro trans., 42" snow blower, 38" deck, exc. cond., \$2100. 908-534-8242

Musical Instruments 585

GEMMEHARDT FLUTE FOR SALE - Just 1 year old paid \$600. BO. 2 cases incl. 908-782-7892

Piano - Baldwin Acrosonic Spinet with bench, was \$1584. - Asking \$1100. Call 732-748-1771

PIANO - Hammond Spinet walnut cabinet, w/bench, good cond. \$600. Call 908-996-7295

PIANO - Hardman, Baby Grand, Exc. Cond., newly refinished and tuned. \$7500/obo 732-356-6178

SPINET PIANO - with bench, 35 yrs +, Kohler & Campbell, very good cond., \$895 908-874-0982

VIOLIN - Full size, exc. cond. Rich, full sound, case incl. \$900/080 Call 908-534-5775

WURLITZER SPINET PIANO - w/ bench, walnut finish, needs tuning, \$700 908-889-8947

Wanted To Buy 625

AAA LIBERTY ANTIQUES Highest cash prices paid for anything of value. House calls to tri-state area. Free expert appraisals. Buying furniture, cupboards, lamps, rugs, clocks, paintings, mirrors, cut glass, art glass, depression and carnival glass, coins, silver, gold, all jewelry, stamps, postcards, china, porcelain, all pottery including Rockwood, Fulton, Roseville, Stangl, steins, crocks, jugs, doorknobs, banks, toys, trains, dolls, advertising tobacco tins, swords, canes, ingots, quilts, music boxes, holiday decorations & more! Charlie 908-237-1340 Natalie 908-507-4749

ALL LIONEL FLYER & OTHER TRAINS Top cash prices paid! 800-464-4671 or 973-426-1538

YOU TOO CAN BE A BIG WINNER!

But not if you answer ads that promise easy riches. Call 1-800-876-7060 and learn how to spot telemarketing fraud. It's easy, it's free, and you can do it at home.

Partnership for Consumer Education

Apply for a free copy of the book "How to Spot Telemarketing Fraud" by the Federal Trade Commission.

Wanted To Buy 625

ANTIQUES & COLLECTIBLES One item to entire estate. Call Mike 908-619-7023

Pets & Animals

Horses 620

BARN FOR RENT with Indoor/Outdoor arenas exercise track, X-country course 908-454-6994

BOARDING - \$250 mo., Hillsborough, NJ. Top of the line feed, exc. care, trails, riding ring, wash stall, free trailer parking. 908-359-3880

Boarding/Training Stable, needs regular part-time help, exc. preferred. 609-468-0720

RINGOES HORSEBACK RIDING LESSONS AND TRAINING Beginner To Hunter/Jumper Show Level 908-752-1472

TWO GENTLE People loving, well trained 4 yr. old mares, part of family since 10 months old, each with 4 months professional training, sadly must sell, 1 Buckskin & 1 Grullo, 15H APHA Breeding Stock, asking \$4,800 each. Call 973-252-7399

Livestock 631

ADORABLE GOAT KIDS bottle fed, friendly, Alpine. Pigmy, chickens, peacocks & lambs. 215-862-5686

Pets 640

\$150 BUYS ANY PUP in #1 Puppy House only. All Types and Sizes. NJ's Largest Selection and lowest prices. Open June 11-12, Hours 10:5-10:55. O'Neill Kennels 3637 US Highway #1 Princeton, NJ

GOLDEN RETRIEVER PUPS - AKC, exceptional quality, genetics & temperament a priority. 215-752-6969

LAB PUPPIES AKC

Gorgeous Yellow/Black/Choc. written guarantee. 908-246-8509 or 732-469-5685.

Financial & Business Opportunities

Business Opportunities 650

30 NEW CANDY MACHINES Must sell Candy or nuts included, will train. \$4995. Call 908-806-2319

ALL CASH CANDY ROUTE. Do you earn up to \$800/day? Your own local candy route. Includes 30 machines and Candy. All for \$5995. Call 1-800-814-6443

Are you making \$1,700 per week? All cash vending routes with prime locations available now! Under \$9,000 investment required. Call Toll Free (24-7) 800-363-2654

Home Health Services 762

Embracing Quality Home Care Are you concerned about a parent or loved one being home alone? We provide companions, Care Aides & HHA's. Let us help and give you peace of mind. We offer quality staff with a deep commitment to others. Our caregivers are pre-screened, bonded & insured. Let us work for you! 908-832-0659

Financial & Business Opportunities

Business Opportunities 650

AMERICA'S HOTTEST OPPORTUNITY-OWN YOUR OWN-DOLLAR STORES (www.dollarstoreservices.com) • DISCOUNT PARTY STORES (www.dollarstores.com) • JEWELRY BOUTIQUE (www.19jewelryboutique.com) • MAILBOX STORES (www.themailboxstores.com) Think Christmas, Start Now. FROM \$45,800 1-800-829-2915 OR 1-800-518-3064

SSCASHSS Immediate Cash for structured settlements, annuities, Life Settlements. Mortgage Notes, Cash Flows. J.G. Wentworth - #1 1-800-794-7310

MAKE UP TO \$4000 Weekly! Exciting weekly paycheck! Written guarantee! 11 year Nationwide Company Now Hiring! Easy Work, sending out our simple one page brochure! Free postage, Supplies! Free information. Call Now! 1-800-242-0363, Ext. 3400

SUCCESSFUL MILLIONAIRE looking for 5 self starters. Money motivated, Business Builders. \$500 start up. 1-888-201-3788

Financial Services 655

TOO MUCH DEBT??? Don't choose the wrong way-out. Our services have helped millions. Stick to a plan, get out of debt & save thousands. Free consultation. 1-866-410-0965. CareOne Credit Counseling

Professional Services

Child Care/Nursery Schools 734

CHILD CARE, Somerville area, infants to 5 yrs, old, fenced in yard, hot lunches and snacks incl., lots of TLC. 908-541-1259

Home Health Services 762

Embracing Quality Home Care Are you concerned about a parent or loved one being home alone? We provide companions, Care Aides & HHA's. Let us help and give you peace of mind. We offer quality staff with a deep commitment to others. Our caregivers are pre-screened, bonded & insured. Let us work for you! 908-832-0659

Boats & Motors 1330

TRACKER 16 FT '97 - deep V w/bass kit, asking \$6500. 908-868-5532. 908-234-9152

Transportation

Autos For Sale 1385

AUDI A6 '01, Quattro, 2.8L, loaded, 61K, leather, sun roof, mint cond. \$15,900/obo. Call 732-946-9689

AUDI A6 2.8 '99, Quattro, AWD, black w/black inter. 99K mi., good cond. \$9500. Call 908-782-2077

BMW 1981 733i four door sedan, Pistone Restoration. Over \$45,000 invested. Email hovard@pammedia.net for photos & restoration list. \$17,000 Call 908-782-2557

BMW 328i 1 Convertible, 98, 5 spd, manual, sports and cold weather package, HD sound, black & beige interior, 107K miles. \$11,500. OBO 908-832-0966

BMW 330i '01 - prem & sport pkg, titanium silver, 47K mi., exc. cond., \$24,000 obo 908-647-2075

BMW 525i '01 Black w/black int., exc. cond. in & out, very low mi., \$19,500. 908-769-1701

Miscellaneous 777

AFFORDABLE HEALTHCARE - Family Medical/Dental from \$39.95 to \$149.95 entire family, \$35. Office visits \$10/\$20/\$40, prescription card. Pre-conditions accepted. Will Beat competitors! 1-800-714-1525

AFFORDABLE HEALTHCARE - Family Medical/Dental from \$39.95 to \$149.95 entire family, \$35. Office visits \$10/\$20/\$40, prescription card. Pre-conditions accepted. Will Beat competitors! 1-800-714-1525

Senior Citizens Services 795

POLISH REFERRAL SERVICE INC. providing live-in/out housekeeper for elderly, Lic. & Bonded 908-689-9140

Recreational Vehicles

Campers & RVs 1320

NEW JERSEY'S LARGEST RV DEALER - Scott MotorCoach representing "Nation's #1 Selling RV brands" Hundreds of RV's on Sale. SCOTT MOTORCOACH, Toll Free 1-866-340-0650 www.scottmotorcoach.com

HONDA ACCORD '04 2 door, ex. V6, 144K, loaded, 34K mi., moon roof, one owner, \$22,995. 12K/15000 908-806-3663

HONDA ACCORD LX 4DR '98 - auto, 87,000 mi, New Batt and Tires, Very Clean, \$5300. Call 906-392-1772

HONDA S2000 '02, only 5,500 miles, garaged, never out in rain or snow. Serious inquiries only. \$23,995. 908-534-3855

ISUZU RODEO 97' - 119K, \$2500. 080 Fair Cond. 908-892-7521

Autos For Sale 1385

Mercedes 1987 560 SEC Stunning 2 door Coupe. Over \$33,000 invested. Email hovard@pammedia.net for photos & restoration list. \$17,000. 908-782-2557

MERCEDES BENZ 86' 560 SL light ivory on palomino leather, both hard and soft tops. Perfect Cond. Always garaged. \$24,251.500 OBO 973-226-2077

Mercedes C230 '98, loaded, 110K, sunroof, leather, CD, exc. cond. \$9,150/obo 732-946-9689

Mercedes CLK 430 '02, very nice cond. convertible silver w/black top, V8, \$37,995. 908-782-2077

MERCEDES CLK 500 2004 Convertible, very nice, V8 eng., leather int., auto, white w/blue top, less than 13K, \$57,500. Please call Nick 908-782-2077.

MERCEDES ML320 '02, Fully equipped, 4 wheel drive, leather int., mint, low, 35,5K, \$23,500. Call Nick 908-782-2077

SAAB 900S '95 - 2 Avail. Greer 2 dr. \$3350, silver 4dr. \$4300, both exc. cond. *908-832-3624*

BMW 525i '01 Black w/black int., exc. cond. in & out, very low mi., \$19,500. 908-769-1701

Somerset County Classified

Sell your car, furniture, or no longer needed items

\$19.95

Run it 'til you sell it!

The Reporter **nj**

4 Line Ad. Additional lines \$4.90. Private party only. For up to six months. Seller responsible for renewing ad.

Call **800.559.9495** to place your ad

Vans & Jeeps 1410

CHRYSLER TOWN & COUNTRY LXI '98 - Fully loaded, all leather, excellent condition. \$6500/OBO. 908-735-0556 or 732-489-0004

Ford E150 '02 Silver V6, Auto trans, a/c. 51K mi. \$11,500. 908-596-6525

GMC SAFARI '00 AWD, 72K, exc. cond, fully loaded, one cr., all records, KBB rated \$9600. 908-229-2028

MERCURY VILLAGER 1997 - 55,500 mi, very good cond, par steering, A/C, power windows, A/C, power seats, AM/FM cassette, 7 passenger, asking \$5200 908-797-8070

Four Wheel Drive 1400

CHEVY SUBURBAN LT '99 - AWD, 77K, Htr, exc. cond., must see! \$12,900. OBO 732-382-1544 Colonia

CHEVY TRACKER '02 - AWD, 15K, auto, V6, all pwr, \$13,300 call 908-276-7544

Trucks & Trailers 1405

FORD F-350 4X4 86" - crew cab, 6.9 diesel, auto, A/C, 181K, \$3,500 OBO. 609-466-1283

GMC 6500 '78 - 5 yd dump with 10' plow. Work ready. \$3500. 908-531-7896

PRICED TO SELL INTERNATIONAL BOOM TRUCK 81' w/10' lift! 52 Kiloade hour, 454 hp, 8000 lbs! Asking \$30,000 609-209-1742

FREE ADVICE. BE WARY OF ADS THAT PROMISE EASY \$\$\$

Yes! Absolutely free advice about fraudulent contests and get-rich quick schemes. Call 1-800-676-7060 today for free info.

PARTNERSHIP FOR CONSUMER EDUCATION Apply for a free copy of the book "How to Spot Telemarketing Fraud" by the Federal Trade Commission.

SELL IT HERE! 1-800-559-9495

SELL IT HERE! 1-800-559-9495

SELL IT HERE! 1-800-559-9495

SELL IT HERE! 1-800-559-9495

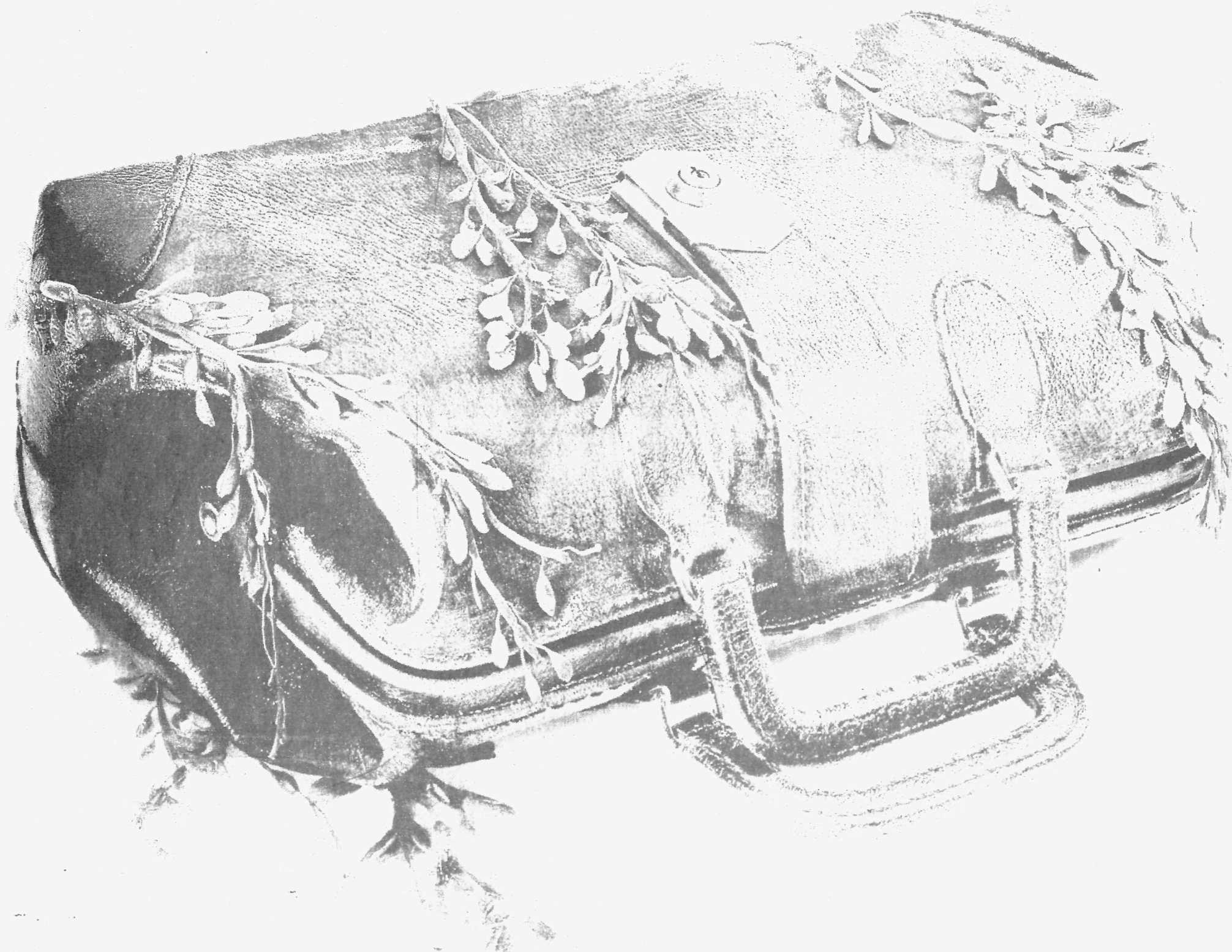
SELL IT HERE! 1-800-559-9495

SELL IT HERE! 1-800-559-949



Horizon Blue Cross Blue Shield of New Jersey

Making Healthcare Work.



Everyone agrees that the health care system has gotten more and more complicated, confusing and impersonal since the days when doctors made housecalls.

The Bag is back.

At Horizon Blue Cross Blue Shield of New Jersey, we think it's about time somebody stepped in to, in a sense, turn back the clock. Not to a time of less-advanced health care. But to a time when the health care system was a lot less complicated.

That's why we're borrowing one of medicine's most revered icons—the doctor's medical bag—as the inspiration for everything we do. You'll be seeing it a lot in the months to come.

It stands as our promise to you, our members, that New Jersey's largest health insurance company is committed to using its technology, information, experience and knowledge to simplify the system. To make it easier for you to access. And to make you feel a lot more like a person and a lot less like paperwork.

But it's not just about a promise. It's also about real initiatives like All About You. A personal summary of all your medical activity as a Horizon Blue Cross Blue Shield of New Jersey member. It's intended to help you and your doctor have more meaningful and productive dialogues. Then there's E-Prescribe. It lets your doctor send your prescriptions electronically to your pharmacy to ensure accuracy. And Preventive Care Call Program, an automated, interactive system that actually calls you at home to remind you to get important health screenings.

The Bag is back. And with it, a return to a simpler, more common-sense approach to health care. Because making health care work the way you want it to is what we're all about.

To find out more, visit www.thebagisback.com.

HEALTH | DENTAL | PHARMACY | DISEASE MANAGEMENT