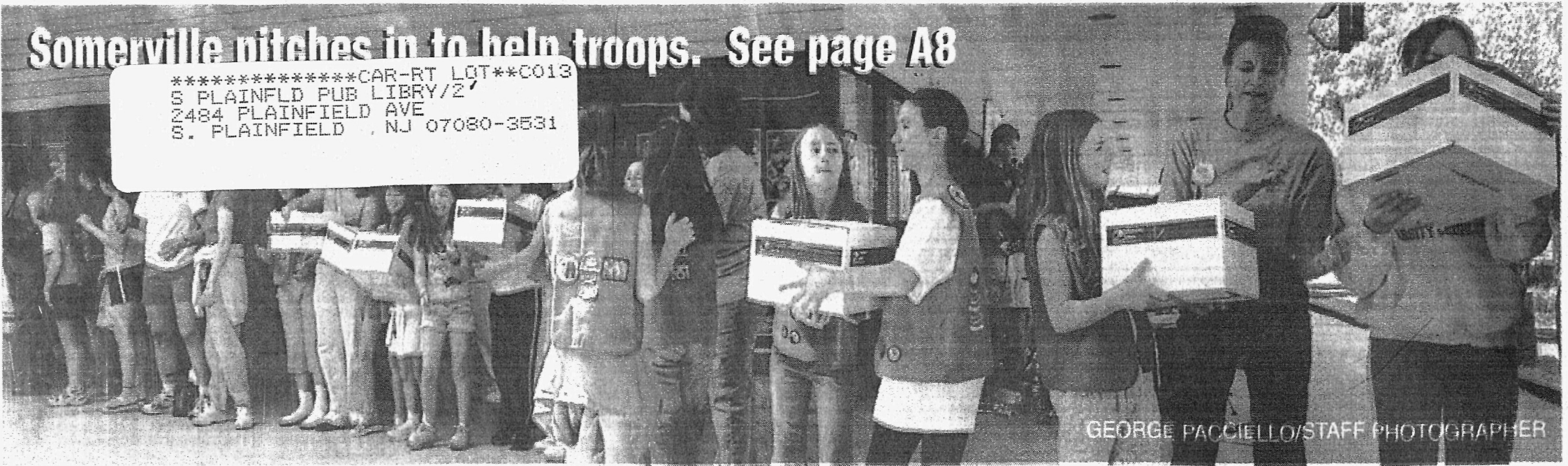


Somerville nitches in to help troops. See page A8

*****CAR-RT LQT**C013
S PLAINFLD PUB LIBRY/2
2484 PLAINFIELD AVE
S. PLAINFIELD, NJ 07080-3531



GEORGE PACCIELLO/STAFF PHOTOGRAPHER

The Chronicle

Since 1862

Vol. 144, No. 21

Saturday, May 21, 2005

50 cents

Reverse-911 costs to be shared

By JIM WHITE
Staff Writer

An April 8 water main break in Bound Brook left hundreds of thousands of residents across Somerset, Middlesex and Union counties without water or low pressure, prompting authorities to use a reverse-911 system alerting people to boil their water and when it was safe to stop.

The pre-recorded messages, at 30 cents a call, cost Elizabethtown Water Company \$12,000 — the kind of telephone bills the Somerset County Board of Freeholders is hoping to avoid when its reverse-911 system is up and running, by the end of the year, according to officials.

Through a reverse-911 system, residents are informed by phone of nat-

ural disasters, extremely dangerous weather conditions, chemical spills and acts of terrorism, among other events. Officials said the pre-recorded messages could also be used to put residents on the look-out for missing children, similar to the Amber Alert system.

Back in March, Rep. Rodney Frelinghuysen, R-11th, announced

he had secured \$300,000 to modernize the county's emergency communications plan with a reverse-911 system, which was earmarked in the Fiscal Year 2005 Commerce-Justice-State Appropriations bill, included in a larger spending package passed by Congress and signed into law last

Continued on page A2



Edison Beats Rival Teams

Edison trimmed rival J.P. Stevens 6-3 and South Plainfield thumped Metuchen 14-4 Saturday to advance to the quarter-finals of the GMC Tournament. For a recap of tournament games involving area squads, Page B1.

Memorial Day

A Memorial Day Parade will be held in Dunellen 10 a.m. May 30. A Memorial Ceremony, with Assemblyman Jerry Green as guest speaker, will immediately follow the parade at Washington Memorial Park.

How to Help OPSHBX

Operation: Shoebox New Jersey 2005, in partnership with American Recreational Military Services is seeking cash donations in support of their ongoing effort to supply American forces overseas with a steady supply of personal items, toiletries and snacks. ARMS is a registered 501(c)(3) non-profit organization under the Internal Revenue Service code. All contributions are tax-deductible. All contributions are dedicated to the purchase of supplies and costs of shipping. ARMS/Operation: Shoebox New Jersey 2005 is an all-volunteer operation. Depending on weight, it costs between \$8 and \$15 to ship each box overseas. Checks should be made out to ARMS, with the instructions "Operation Shoebox NJ 2005" written on the memo line. Checks should be mailed to: Operation: Shoebox New Jersey 2005, c/o The Reporter, 44 Veterans Memorial Drive East, Somerville, N.J. 08876. For more on Operation Shoebox, see Page A5 and A8.

\$40,000 restores Justice

Coming next week:
How Lady Justice got back her "shine"

By JIM WHITE
Staff Writer

SOMERVILLE — She's back. Lady Justice was returned to the top of the historic Somerset County Courthouse yesterday after undergoing a \$40,000 makeover.

"Like raising the flag at Iwo Jima," said James Marshie, of Paragon Restoration, who, along with fellow employee Tom Triano, lifted the statue to its feet, giving Lady Justice her first blindfolded look at all of Somerville since being taken down for the county-funded refurbishing about half a year ago.

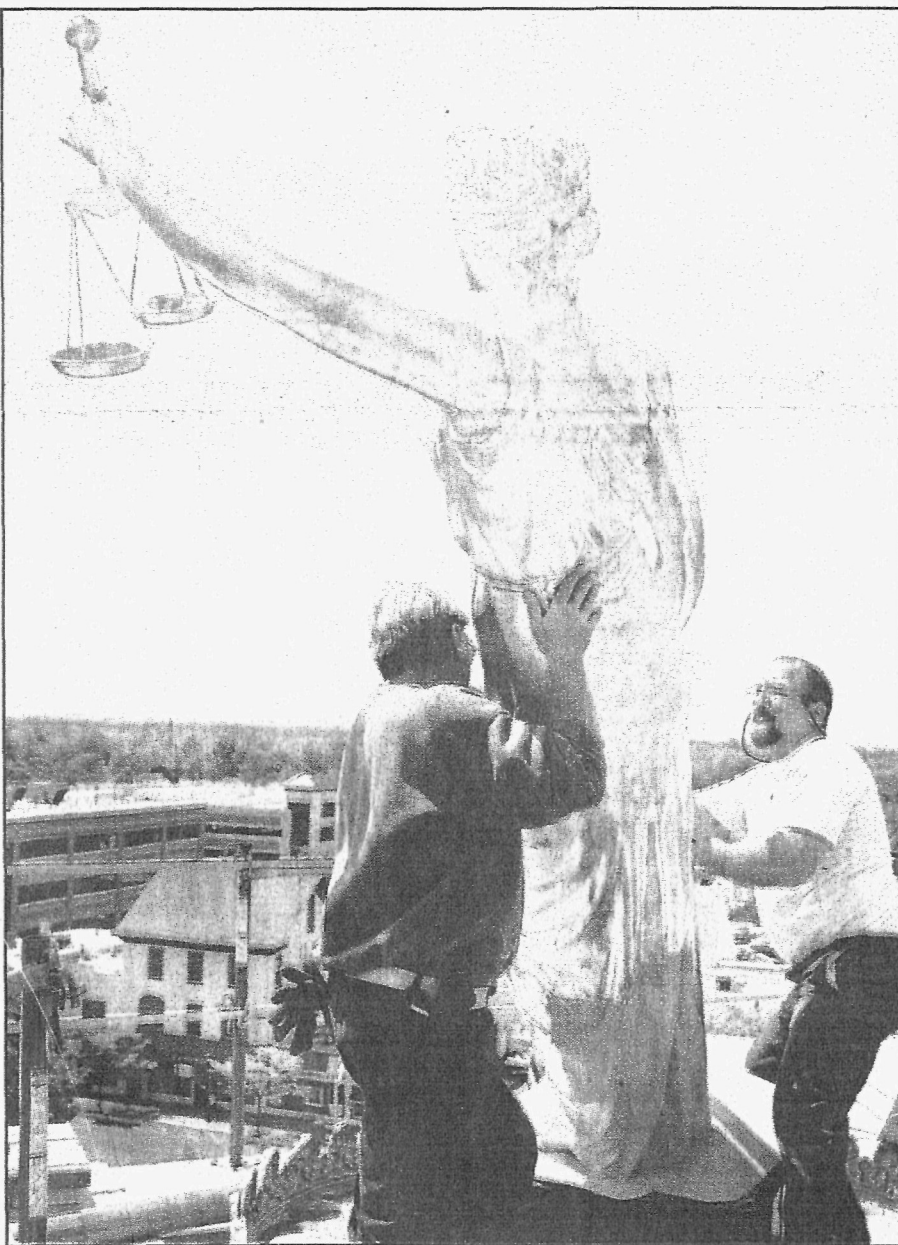
Earlier in the day, Kenilworth-based Paragon Restoration lifted the statue to the main roof of the courthouse with a cherry picker, hoisted it to the top of the cupola and eventually set it upright.

And, man, how she shone in the sun.

Freshly coated in 24-karat gold leaf, she sparkled against yesterday's brilliant sky.

"It only comes in 4-inch by 4-inch

Continued on page A2



James Marshie and Tom Triano lift Lady Justice to her position on top of the historic Somerset County Courthouse in Somerville Wednesday.

Improvement authority gets \$200K grant

MIDDLESEX COUNTY — The Federal Environmental Protection Agency notified the Middlesex County Improvement Authority that the authority would receive a \$200,000 grant to conduct environmental assessments at abandoned sites where petroleum products might be found.

The authority, which works with municipal officials on funding, planning, permitting, legal and administrative issues for economic development projects, has asked Middlesex County's 25 municipalities to list sites, such as former gas stations and auto repair shops, that need to be assessed to be brought back to beneficial use.

With the grant money, the authority will update its brownfields database and begin assessing the abandoned sites for environmental and economic viability.

"With the EPA's Community Wide Petroleum Assessment Grant money, the MCIA hopes to turn abandoned sites that are having a negative impact on the surrounding neighborhoods into community assets," said MCIA Chairman Leonard J. Roseman. "The sites have the potential to become greenways and walkways, community gardens and parks — whatever the municipality envisions for the area."

The MCIA has drawn up guidelines for sites to be considered for grant money. The site must be a detriment to the surrounding neighborhood and the municipality must be able to

Continued on page A2

Piscataway video takes top honors in contest

PISCATAWAY — A team of students from Piscataway High School took top honors in the sixth annual Public Service Announcement Video Contest for a video they produced warning their peers of the dangers of drinking and driving.

The contest is sponsored by the Middlesex County Board of Chosen Freeholders, the County Superintendent of Schools and the Injury Prevention Program, Level One Trauma Center at Robert Wood Johnson University Hospital and enlists teams from the county's high schools to help spread the message that drinking and driving don't mix.

"Every year we've been overwhelmed by the compelling, thought-provoking work each team produces, and this year is certainly no different," said Freeholder H. James Polos, chairman of the county's Public Works and Transportation Committee. "These teens get to the heart of the message and present it in such a way that is always stunning, always timely."

The winners were announced during

a reception at RWJUH in New Brunswick. All 15 30-second public service announcements submitted for the contest, 12 in English, three in Spanish, were aired for public viewing for the first time before the winners were announced.

The PSAs have been posted to a local news Web-site and have been sent to 14 local cable stations. They also will be used in other drinking and driving awareness programs.

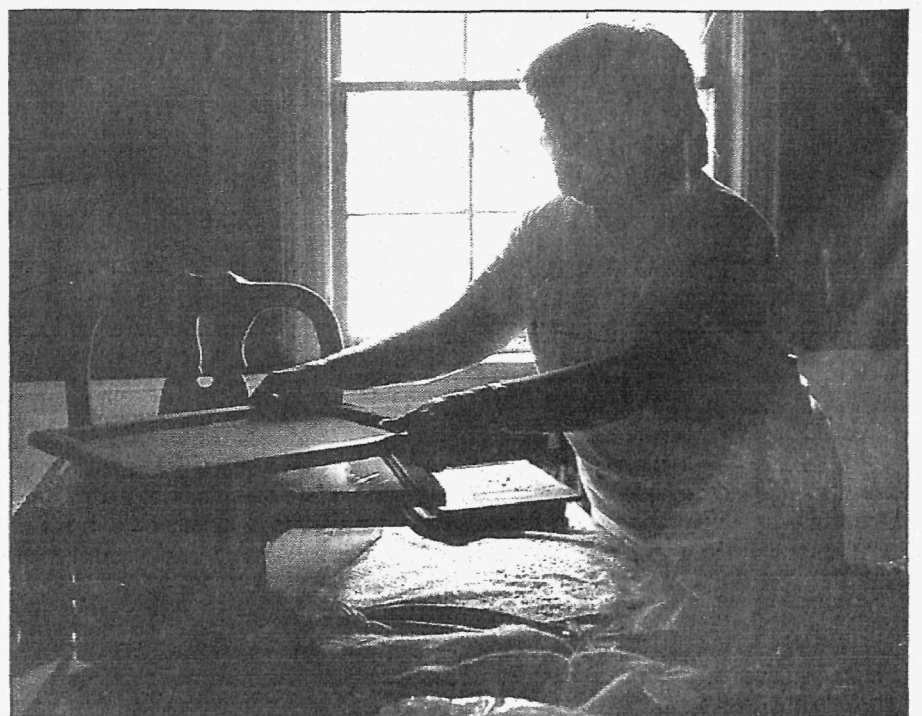
Piscataway High School students Melissa Przyborowski, Ryan Lynch, Chris Novak and Lauren Fisher and their teacher Dawne Dionisio received first prize for their video titled "Loneliness." The winners received \$1,000 for their school to be used for their Project Graduation or other driver safety and awareness program.

Student Rick Wallace and Physical Education teacher Andy Eng from J.P. Stevens High School in Edison took second place and \$750 for their video "Don't Drink and Drive."

The message in each of these videos

Continued on page A2

Rocky road to recovery



Fawnda Genovese-Garcia tries to save as many pictures as she can from her Green Brook home, heavily damaged in a fire earlier this year. In this, the third week of a series that look at how a family recovers from a fire, see how she and her husband, Felix Garcia, try to pick up the pieces of their lives. Page B2.

Commentary.....A4
Community Life.....B2
Sports.....B1

nj.com

Everything Jersey



Beatlemania Now

As Seen On Broadway!

Friday May 20, 2005, 8:00 PM
ONE 2 HOUR SHOW

Featuring four professional musicians who capture the spirit, look and sound of the Beatles in 35 renditions of the hits we all know and love.

South Plainfield High School Auditorium

TICKETS ONLY \$15.00

Available at the door

Call 908-412-6559

12 & Under Admitted Free

Sponsored By

South Plainfield Volunteer Fire Dept.

SOMERSET PATRIOTS

FAN OF THE WEEK!

Fawnda Genovese-Garcia & Felix Garcia

Newly married, Fawnda Genovese-Garcia has been a longtime Somerset Patriots fan; she recently brought her husband Felix, a native of Ecuador, to his first-ever ballgame at Commerce Bank Ballpark. The Green Brook couple suffered a devastating loss earlier this year when they were burned out of their house. The Somerset Patriots were happy to present the couple with several gifts, including t-shirts and team memorabilia which were lost in the fire.

Sponsored By

Flemington
CAR & TRUCK COUNTRY
Family Of Dealerships

Rts. 202 & 31
or at: flemington.com

©2005 F&B Inc.

Get Patriotic!

OVER 100 LINES OF QUALITY FURNITURE AT REASONABLE PRICES

Readers Choice AWARDS
Voted Best Furniture Store in Somerset County!

Reverse-911 costs

Continued from page A1

year by President Bush.

Michael J. Amorosa, county engineer and director of public works, said his people are still investigating the costs of such a system.

"We're very hopeful to get the reverse-911 system up and running and that it will be covered by the grant," he said.

Amorosa said the county is looking to purchase reverse-911 hardware, which would significantly cut the cost of making the calls, to about 4 cents by some estimates.

LeRoy Gunzelman, the county's director of Emergency Management, said in the case of the Bound Brook water main break, the New Jersey State Police — who put out the alert on behalf of the Department of Environmental Protection for Elizabethtown Water Company — do not own the hardware, and therefore the cost of the calls was higher.

Gunzelman said he assumed the water company would likely pass the \$12,000 bill on to its customers.

Elizabethtown Water officials were not available for comment.

When the county's system is operating, Gunzelman said it is up to the freeholders but he assumes the county would cover the cost of county-wide calls, adding a municipality would likely be charged for messages requested by and specific to that municipality.

County Sheriff Frank Provenzano had said a reverse 911 system could be used in a way similar to Amber Alerts. He said it could also be used to seek the public's help in finding a vehicle used in a burglary or other crimes.

In law enforcement, officials said, the system could be used for investigations; crime prevention alerts; abductions and hostage situations; bomb threat; prison escapes; gang activity reports; arson investi-

gations; sex offender and predator notices; parolee and juvenile check-ups; search and rescue operations and jury call-offs.

Public safety agencies could use it for emergency notification; evacuation and safe-return notifications; natural disasters; hazardous material releases and inclement weather.

State and local governments could use it for road closing announcements; disaster preparation for forecasted weather; citizen and business surveys and community event reminders.

Health-care facilities could use it for staff call-ins; appointment reminders; program announcements; outpatient health verification and emergency blood donation requests.

Utility companies could use it for emergency notifications; service availability announcements; work crew call-ins and employee bulletin boards.

Improvement authority gets \$200K

Continued from page A1

secure access to it.

The MCIA has begun preliminary work on sites in Old Bridge and Metuchen and plans to reach out to the municipalities once again to determine other areas to assess.

The grant money also may be used in towns using the state's abandoned property rehabilitation law, which speeds the process for towns

seeking to obtain access and control over abandoned properties.

The EPA funds would be available in the fall. About 600 applications were submitted to the EPA from throughout the country. About 200 are being funded.

This is the third EPA assessment grant the MCIA has received. Two previous grants, totaling \$550,000, have been used to assist projects such as the South

Amboy Intermodal Transportation Center and the Milltown-Ford Avenue Redevelopment project.

The MCIA also would offer towns assistance in neighborhood planning and project management, as well as paying for the site assessment on the town's behalf.

"The EPA funds could help our towns take eyesores and transform them into viable recreational and open space areas," Roseman said.

Piscataway video takes top honors

Continued from page A1

is very clear and speaks directly to the kids," said contest judge Diana Doherty, injury prevention coordinator for the Level One Trauma Center at Robert Wood Johnson University Hospital in New Brunswick. "These winning videos will grab kids and the kids will watch — not turn them off or tune them out."

The National Council on Alcoholism and Drug Dependence of Middlesex County also will award gift certificates for Borders Bookstores to each member of the three winning groups. NCADD also works with the County Prosecutor's Office on prom and graduation programs to raise awareness.

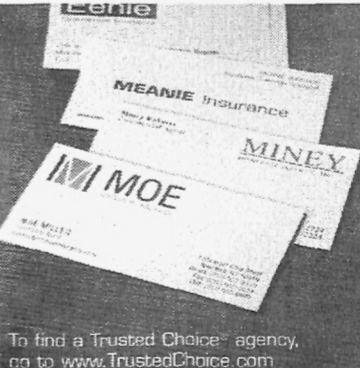
The PSA contest intentionally coincides with prom and

graduation season in hopes of reminding all students of the seriousness of drinking and driving, Polos said. "It is vitally important to get teenagers thinking — to get them involved in keeping themselves and their friends safe," he said. "The most effective 'Don't Drink and Drive' message is one in which teens speak to teens. This contest is the perfect example of that."

ROOFING

Cape Cod	\$2,500	\$100 Off Any Roofing Job
Bi-Level	\$2,700	
Split Level	\$2,900	
CARLSON BROS. 908-272-1266		

Picking an insurance agent shouldn't be left to chance. Instead, use a Trusted Choice agency that offers choice of insurance companies. They can help you get protection for everything that's important to you. Don't play the guessing game. Make the right choice. Trusted Choice.



To find a Trusted Choice agency, go to www.TrustedChoice.com

Justice

Continued from page A1

sheets," said Triano, who seemed at home atop the rickety scaffolding as he offered a sample of the leaf and explained the delicate process of applying it.

"Feel it," he said. "See, it smears in your hand."

Lady Justice was last gilded in 1994 when the county made major renovations to the courthouse, but constant exposure to the elements since then had taken its toll. She also had a few dents, holes and dings that needed repairing, and her scales of justice had to be replaced.

First erected around 1909 and listed on both the state and national historic registers, Lady Justice stands 8 feet tall, and about 10 feet at the tip of her raised left hand. Despite her size, she only weighs a little more than 100 pounds because her copper frame is hollow.

"But she's bulky, she's eight foot," said Triano, who offered leverage holding down the statue's base as Marshie pushed it up from the back.

"Good thing about her, she's quiet," Marshie joked.

For years Lady Justice stood quietly over the borough, her gold peeling off to reveal a grayish-blue base, only to vanish for months, and then return yesterday in all her glory, filling the void in the Somerville skyline.

The Chronicle

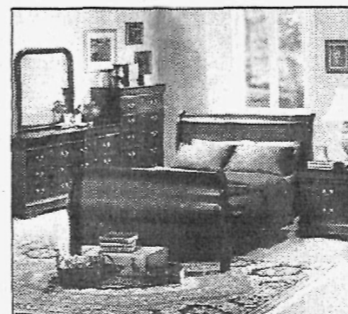
◆ Since 1862 ◆

A Penn Jersey Advance, Inc. newspaper
NJN Publishing © 2003

The Chronicle (U.S.P.S. 061-800) ISSN 1047-3351 is published Saturday by NJN Publishing, 44 Veterans Memorial Drive East, Somerville, N.J. 08876. 908-575-6860. Periodicals postage paid at Somerville and additional mailing offices. POSTMASTER: Send address changes to NJN Publishing, Fulfillment Office, P.O. Box 699 Somerville, NJ 08876. Subscription rates per year: \$28 in Somerset & Middlesex County; \$38 in NJ; \$36 out of state. To subscribe call 1-800-300-9321.

YOUR CHOICE \$1899!

List Price \$2899 Reg. Price \$2599



Martin's Furniture

432 Route 31
Washington, NJ

908-537-0075

Mon.-Fri: 10-9; Sat.: 10-6; Sun 12-5

350 Route 22
Green Brook, NJ

732-356-8388

Sat., Mon. Tues.: 10-6; Thurs., Fri.: 10-9
Sun, 12-5; Closed Weds

EST149



Members of the Junior Girl Scout Troop 73 of Middlesex hold up donations delivered to the Somerset Regional Animal Shelter in Bridgewater. Pictured from left (top row) are Haley Kisly, Chelsea McCallen and Nicole Chinn. Bottom row, from left, are Kimberly Schueler, Chelsea Devaney, Sara Yesalavich and Zoe Fonte. Kneeling is Stephanie Phang. Members of the troop won a Bronze Award for their efforts.

PHOTO COURTESY GIRL SCOUT TROOP 73

Girl Scouts earn Bronze Award

MIDDLESEX — Junior Girl Scout Troop 73 successfully completed the requirements necessary to receive the highest honor in junior girl scouting, the Bronze Award.

To earn this award, the girls were required to demonstrate the leadership skills learned as a junior girl scout through a project that makes a positive impact on their community.

Junior Troop 73 chose to sup-

port the efforts of the Somerset Regional Animal Shelter in Bridgewater by collecting items on the shelter's wish list and raising funds for the shelter's Cupid Fund, which provides medical care to animals not supported by the shelter's budget.

By creating and executing a detailed fundraising campaign, which included distributing flyers to shoppers enter-

ing Pathmark and Acme supermarkets, the girls were able to collect over 50 bags of needed animal items and raise over \$400 for the fund.

The members of Junior Troop 73 are Nicole Chinn, Chelsea Devaney, Zoe Fonte, Haley Kisly, Chelsea McCallen, Stephanie Phang, Kimberly Schueler and Sara Yesalavich. The troop is led by Cheryl Devaney and Cathy Fonte.

Briefs

Highland Park holding street fair on Sunday

HIGHLAND PARK — The 16th annual Highland Park Chamber of Commerce Downtown Street Fair and Craft Show 11:30 a.m. to 4:30 p.m. Sunday rain or shine.

Admission and parking are free.

The fair is sponsored by the Highland Park Chamber in partnership with Main Street Highland Park, which manages the borough's business improvement district, and the Borough of Highland Park.

The fair is expected to draw 5,000 to 7,000 guests.

Raritan Avenue, the local leg of Route 27, will be closed to vehic-

ular traffic between Second Avenue and Fifth Avenue for the festivities. The day of family fun will also include food, inflatable rides, pony rides, a petting zoo, games, and continuous live musical entertainment.

Look for appearances by New Jersey 101.5 FM and Central Jersey 1450 WCTC.

Vendor space is offered on a first-come, first-served basis. For more information, contact the Office of Street Fairs at (908) 654-1400 or info@streetfairs.org.

A full listing of events in Highland Park is available at www.highlandparkchamber.com.

Girl Scout's yard sale helps tsunami victims

MIDDLESEX — The Girl Scouts of Middlesex Borough will be hosting a special fundraising

Yard Sale 8 a.m. to noon June 4 at Mountainview Park.

Multiple troops and families will be participating in the sale, selling a wide variety of used and nearly new items, such as children's toys, clothing and home decor.

All proceeds from the sale will be donated to the Tsunami Relief Fund established by the World Association of Girl Guides and Girl Scouts to fund specific projects of Girl Scouting and Girl Guiding organizations in the areas impacted by the tsunami.

These may be projects to support affected communities, or to re-start and/or re-equip guide units.

For more information, contact Sherley Penrose at (732) 752-5595 or Linda Buhler at (732) 424-7315.

Police News

MIDDLESEX BOROUGH
Charles Dahms, owner of Hercules Industrial Equipment LLC 129 Lincoln Boulevard, reported a theft of tools from a company vehicle 8:41 a.m. May 9, police said.

Cpl. Francis Sweeney investigated.

William Ruiz, 34, of Middlesex was arrested and charged with theft and pos-

session of heroin 4:01 p.m. May 9, police said.

Ruiz allegedly attempted to remove a Toro lawnmower, valued at \$569, from Middlesex Power Equipment.

During the course of the arrest William Ruiz was found to be in possession of heroin. He was processed and transported to the MCACC in lieu of \$10,000 bail. Officer Daniel O'Connor investigated.



GIRLS: 3 to 28 BOYS: 3 to 12
BABY DIVISION: Under 3
Baby Girl ★ Baby Boy (2 mo. - 35 mos.)
Petite (girls 3-5) ★ Little Miss (6-9)
Jr. & Older Boys (3-6) ★ (7-12)
Jr Miss (10-12) ★ Teen (13-17) ★ Miss (18-28)

**ALL AMERICAN
GIRL & BOY PAGEANT**

NYC TALENT SCOUT WILL BE AT THIS CONTEST
SCOUTING FOR TV COMMERCIALS & MOVIES

EVERY CONTESTANT RECEIVES A TROPHY!!!

Winners in each division become eligible to compete for the NATIONAL TITLE and over \$60,000 in SAVINGS BONDS, GIFTS and PRIZES!!!

TO ENTER: www.pageantwin.com

or Call 1-800-488-8851

PAGEANT HEADQUARTERS
P.O. Box 431, No. Salem, NY 10560

**Pageant will be held:
Sunday, June 12 in
East Brunswick, NJ**

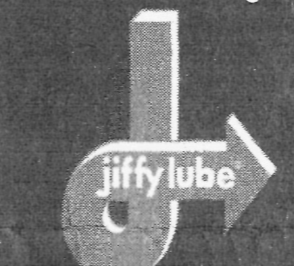
Silver Creek Landscaping
SOUTH PLAINFIELD
LANDSCAPING AT AFFORDABLE PRICES
• LANDSCAPE PLANTINGS
• HYDRO SEEDING & SOD
• MULCH / STONE / TOPSOIL
• RETAINING WALLS
• BRICK PAVERS - PATIOS & WALKS
• RESIDENTIAL & COMMERCIAL
• FREE ESTIMATES -
908-756-7272

MIDDLESEX ARMY • NAVY

The only place to shop
for work clothes,
boots and jeans!

315 Bound Brook Rd., Middlesex
732-968-2848

Thank You!
For Voting Us*
"Best Oil Change"



*Readers' Choice 2004

BRIDGEWATER **GREEN BROOK**
1316 Route 22 East 195 Route 22 East
908-231-9800 732-424-7300

Why do smart kids fail?

If your child has struggled with schoolwork this year, take action now to make his or her grades better. **Huntington Learning Center** can help. Our certified teachers can pinpoint your child's strengths and weaknesses and tailor a program of instruction to meet his or her needs. Just a few hours a week can improve your child's skills, confidence, and motivation. Call Huntington today. Your child can learn.

Huntington LEARNING CENTER 1-800-CAN LEARN

Bridgewater 908-725-3900	Livingston 973-994-2900	Springfield 973-258-0100
East Brunswick 732-257-7500	Manalapan 732-431-5400	West Long Branch 732-935-1131
Edison 732-906-0900	Middletown 732-671-0200	
Ledgewood 973-232-8300	Morristown 973-292-9500	

SINCE 1972 Independently owned and operated. ©2005 Huntington Learning Centers, Inc.

COME VISIT OUR TWO LOCATIONS

OAK TREE DISCOUNT WINES & SPIRITS

902 Oak Tree Rd., South Plainfield
908-561-0051
(across from A&P Shopping Center)



NJ LOTTERY

Custom Gift Baskets

PLAZA DISCOUNT WINES & SPIRITS

561 Route 1, Edison
732-572-WINE
(in Wick Shopping Plaza)

OPEN: Mon. - Wed. 9am - 9pm, Thurs. - Sat. 9am - 10pm Sun. 10am - 7pm OPEN: Mon. - Sat. 9am - 10pm, Sun. 12 noon - 8pm

BUY RITE LIQUOR

"The place for people of great taste"

EXCEPTIONAL VALUES

ARBOR VALLEY Chablis, Riesling, Burgundy **7.99** 1.5 liter
ARBOR VALLEY Chardonnay, Merlot, White Zinfandel **4.99** 1.5 liter

BEST BUYS AND GREAT WINE VALUES

COLUMBIA CREST Two Vines Cabernet **5.99** 750 ml
This Cabernet is light and lifting, a pretty red with blackberry and raspberry flavors, that finishes silky. - Chosen by the Wine Spectator among the top 30 red wine values from around the world. **BATED 85**

SMOKING LOON Chardonnay **7.99** 750 ml
This Chardonnay is smooth and round, with balanced butter, citrus, apple, spice and sweet cream flavors that linger nicely on the finish. - Rated by the Wine Spectator as a Best Value. **BATED 85**

J. LOHR SEVEN OAKS Cabernet **11.99** 750 ml
This Cabernet is ripe and juicy, with fleshy plum, blackberry and wild berry fruit that's well centered and supple in texture, with a touch of leather and mineral. Rated by the Wine Spectator on December 15, 2004. **BATED 85**

BRANCOTT Sauvignon Blanc Classic **8.99** 750 ml
This wine delivers real fun and energy. The fresh citrus aromas draw you in, with pineapple and citrus nuances adding further interest. A well-balanced wine with the body, zip and subtle associated with the style. Goes well with oysters, grilled or barbecued prawns or salmon, and roasted whole fish with fresh green salads containing parsley, paprika or lemon. - Chosen by the Wine Spectator as a Best Value. **BATED 88**

ROBERT MONDAVI WOODBRIDGE Cab. Chard., Merlot **10.99** 1.5 liter
ROBERT MONDAVI WOODBRIDGE White Zinfandel **7.99** 1.5 liter
GALLO TWIN VALLEY All Types **6.99** 1.5 liter

SMOKING LOON All Types **7.99** 750 ml
ESTANCIA Chardonnay Pinnacles **8.99** 750 ml
RAVENWOOD VINTNERS BLEND Zinfandel **8.99** 750 ml

J. LOHR LOS OSOS Merlot **11.99** 750 ml
COLUMBIA CREST Two Vines Shiraz, Merlot **5.99** 750 ml
KENDALL JACKSON VINTNER'S RESERVE Chardonnay, Pinot Noir **10.99** 750 ml

FRANZIA Chablis, Chianti, Burgundy, Rhine **9.99** 5 liter box
PETER VELLA Cabernet, Chard., Merlot, White Zinf. **11.99** 1.5 liter
LIVINGSTON CELLARS Cabernet, Chard., Merlot, White Zinf. **8.99** 3 liter box

SEAGRAM 7 CROWN Whiskey **14.99** 1.75 liter
CANADIAN CLUB 80 Canadian Whiskey **15.99** 1.75 liter
CLAN MACGREGOR Scotch Whiskey **15.99** 1.75 liter
MACALLAN 12 Year Old Single Malt Whisky **35.99** 750 ml
SEAGRAM Extra Dry Gin **15.99** 1.75 liter

V.O.X. Vodka All Types **24.99** 1.75 liter
SKYY Vodka 90° **23.99** 1.75 liter
WOLFSCHMIDT Vodka 90° **13.99** 1.75 liter
RON RICO Silver or Gold Rum **14.99** 1.75 liter
E & J GALLO VS Brandy **7.99** 750 ml
LICOR 43 Cinnamon Liqueur **18.99** 750 ml
KAHLUA Coffee Liqueur **14.99** 750 ml
SMIRNOFF SIGNATURES Grape Cordon or Strawberry Cooler **12.99** 1 liter
TRIBUTO Dry or Sweet Vermouth **3.99** 1 liter

PRICES EFFECTIVE WEDNESDAY, MAY 18 THRU TUESDAY, MAY 24, 2005

• We reserve the right to limit quantities • Not responsible for typographical errors
• The specific prices and products within this ad are available at this store.

BEER SPECIALS

MILLER LITE & MGD REGULAR OR LIGHT **14.99** 24 pack
12 oz. N.R. Bottles

FOSTER'S LAGER **19.99** 24 pack
12 oz. N.R. Bottles or Cans

O'DOUL'S NON-ALCOHOLIC LAGER OR AMBER **12.99** 24 pack
12 oz. N.R. Bottles or Cans

ROLLING ROCK PREMIUM OR GREEN LIGHT **14.99** 24 pack
12 oz. N.R. Bottles

BECK'S & BECK'S PREMIER LIGHT **22.99** 24 pack
12 oz. N.R. Bottles

MILWAUKEES BEST REGULAR, LIGHT OR ICE **10.99** 24 pack
12 oz. Cans

BASS ALE **22.99** 24 pack
12 oz. N.R. Bottles

ALL CASES REPRESENT 24 PACK UNLESS OTHERWISE NOTED.

Great rates start here. Get more from your money with one of our special CDs!

10 MONTH	3.00% ^{APY}
15 MONTH	3.75% ^{APY}
60 MONTH	4.20% ^{APY}
MINIMUM DEPOSIT \$500	

Our people make the difference...

SOMERSET SAVINGS BANK
SIA

BOUND BROOK 732-560-1700 FLEMINGTON 908-782-4737 MANVILLE 908-722-0265 MIDDLESEX 732-356-2431 RARITAN 908-725-9150 SOMERVILLE 908-725-1957 WHITEHOUSE 908-534-4167

somersetsavings.com

*Annual Percentage Yield (APY) is effective as of publication date and subject to change without notice. Bank policy requires a substantial penalty for early withdrawal. Member FDIC.

Commentary

Please, have some respect

It was a touching scene Saturday at the Downtown Somerville Shopping Center where hundreds of volunteers spent the afternoon sorting and packing supplies that will be sent to U.S. soldiers and Marines serving in Iraq.

The energy was contagious — noticeable in the faces of passersby who continuously stopped to observe the bustling of activity taking place inside a vacant Main Street storefront. Some Good Samaritans jumped right into the shuffle, while others just stood and stared, perhaps trying to get up the nerve to join a bunch of strangers who appeared to be having such a good time stuffing 600 boxes, on the weekend no less.

This newspaper's Operation: Shoebox New Jersey 2005 program has grown in leaps and bounds since its creation back in February. So far 2,100 boxes of personal supplies have been shipped to our troops overseas. A total of \$30,000 has been raised to cover shipping costs and there are close to 100 drop-off sites in the region where people can donate goods to the cause.

However, it was a sad scene recently inside the Somerville Post Office — another Operation: Shoebox drop-off site — where the big, blue box with the OPSHBX logo on it had been filled with old newspapers and fliers, as if it was a recycling bin.

Similarly, a former drop-off box at the Bound Brook ShopRite more or less became a garbage can.

It is unlikely that this happens due to some kind of ill will toward Operation: Shoebox.

After all, who would want to dirty something meant to hold items for our servicemen and women, regardless of how he or she might feel about the war? Who would want to discourage others from chipping in?

The more likely explanation is that we, as a society, are, more times than not, in a hurry, rushing, on deadline or just plain impatient.

We want what we want now, and that includes a place to dispose of our soiled tissues and sticky soda cans. And if we can't find the proper place immediately, we justify our actions with our ignorance and our self-importance.

Some see a big open box in the middle of a lobby and think, "Oh, how convenient, a place where I can lose this banana peel," without ever noticing the Operation: Shoebox New Jersey 2005 poster on the side.

Others see 200 people buzzing around a vacant storefront. And what they see is contagious, and they want to know more. They want to get involved. And all they have to do is ask.

Security funds must reflect risk

By REP. RODNEY FRELINGHUYSEN

"Homeland security assistance should be based strictly on an assessment of risks and vulnerabilities... (F)ederal homeland security assistance should not remain a program for general revenue sharing. It should supplement state and local resources based on the risks or vulnerabilities that merit additional support. Congress should not use this money as a pork barrel."

— Page 396, The 9/11 Commission Report

Since Sept. 11, 2001 U.S. Intelligence reports have indicated that the New Jersey/New York region is still among the most attractive targets for terrorists. Because of our state's comprehensive critical infrastructure system of trans-Hudson bridges, tunnels, airports, seaports, oil refineries, and close relationship with New York City, anti-terrorism experts continue to acknowledge that the risk of terrorism remains.

Yet, despite my best efforts, and those of the 9/11 Commission and my New Jersey colleagues, federal homeland security funds continue to be distributed to states based upon population, rather than risk and vulnerability.

Fortunately, the House of Representatives recently passed legislation that addresses our concerns and follows the Commission's recommendations for sending more federal homeland security resources to New Jersey and other high-threat areas where risk is greatest and critical infrastructure must be better protected against terrorism.

The Faster and Smarter Funding for First Responders Act, H.R. 1544, which I have sponsored, includes similar language to legislation I introduced earlier this year that would change the homeland security state grant formula to be based primarily on threat assessment, critical infrastructure, and population density.

Currently, each state automatically receives an equal share of roughly 40 percent of all federal homeland security funding available in a given fiscal year. The remaining 60 percent is distributed strictly on a population based formula, with no consideration for vulnerability or population density.

This means that rural states like Wyoming and North Dakota receive a disproportionately large portion of homeland funding, while New Jersey, despite its heightened security concerns, receives less than its fair share.

H.R. 1544 establishes a more rational approach to distributing homeland security funding by sending more resources to where they are needed most. As we learned on Sept. 11, 2001, terrorists do not arbitrarily select their targets. Therefore, homeland security funding cannot continue to be distributed without regard for risk.

This legislation would ensure that homeland security grants are awarded according to an assessment of vulnerability and threat, not just population.

Here in New Jersey we are acutely aware of the threat of terrorism.

— New Jersey is the most densely populated state

in the nation, with at least a dozen sites placed on the FBI's "National Critical Infrastructure" list.

— Terrorism experts call the corridor of refineries, rail lines, and highways between Newark Airport and Port Newark and Port Elizabeth "the most dangerous two miles in America."

— Each year, 212 million vehicles traverse our tunnels, bridges and ferries, each of which must be protected by New Jersey and New York officials, including the Port Authority of New York and New Jersey, State Police law enforcement, and other homeland security officials.

— According to the Environmental Protection Agency (EPA), an attack on a chemical plant in northern New Jersey producing chlorine gas could pose a dangerous threat to 12 million people who live within a 14-mile radius.

— Of the Port Authority of New York and New Jersey's three airports the busiest by far is Newark International Airport.

— Nearly 60 percent of all containerized maritime cargo handled by all North Atlantic ports goes through the Port of New York and New Jersey, and the vast majority of the cargo flows through New Jersey's docks onto our rails, tunnels and roads.

— New Jersey and New York first responders mutually aid and rely on each other to protect the entire metropolitan region.

Without critical funds and stronger security measures, each of these sites runs the risk of being vulnerable to terrorism.

If we are to continue advocating for more federal funds on behalf of New Jersey, the state must demonstrate that they are spending taxpayer dollars wisely and quickly. H.R. 1544 would streamline the grant formula by moving planning to the front end of the process.

For the first time, states would be required to develop homeland security plans indicating how they will spend the funds before they receive them.

To prevent funds from being stuck in a bureaucratic pipeline or left unspent, states would also be required to award 80 percent of federal monies to local governments and first responders within 45 days of receiving the funds. Failure to meet this deadline would result in penalties, including a reduction or suspension of grants.

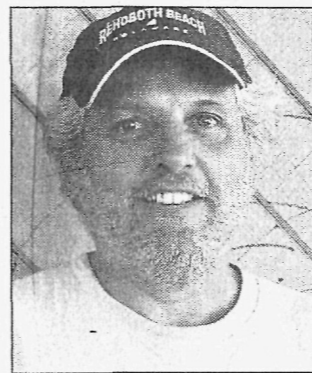
Since Sept. 11, 2001 the nature of terrorism has made the potential locations of attacks on our homeland very difficult to predict or, in some cases, prevent. But given what is at stake and the current the war we are fighting against terrorism, government at all levels has an obligation to do everything in their power to prevent further attacks here at home.

The Senate now needs to enact a similar bill that prioritizes federal resources according to risk and that will ultimately increase security here in New Jersey and across the nation.

Rep. Rodney Frelinghuysen (NJ-11) represents all of Morris County, and portions of Sussex, Essex, Passaic and Somerset counties.

Question of the week:

Has enough been done to preserve the region's historic sites?



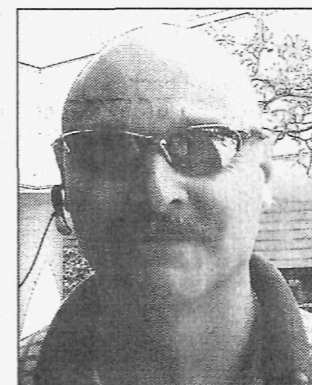
ARTHUR ROTHSCILD
Somerville

"I think they're working hard at it, but they need to proceed properly in order to keep it up."



DANIEL DILAROSA
Somerville

"No, because most of the money is going to Iraq! What about this country?"



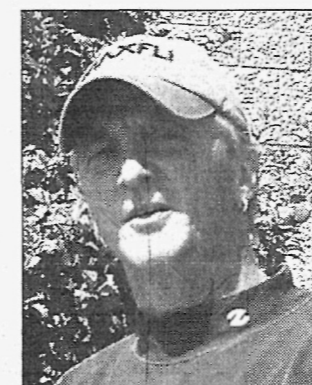
FREDERICK COLE
South Bound Brook

"No, I feel we have a lot that needs to be preserved, but projects have been pushed back in favor of development."



ERIN BURNS
Somerville

"I think there is a lot of history here, buildings and monuments. I don't think enough is being done because Somerville is changing so much."



STEVE BANFITCH
Manville

"There's never enough being done. There could always be more, we need to preserve our past to ensure our future."

Letters to the Editor

Company comments on portrayal in story

To The Editor:

We were disappointed in your recent story, "You still have to pay the mortgage, even when your house burns down" (which appeared in the May 12 edition of The Reporter), which provides an excellent example of a journalist and a publication deciding that the facts shouldn't get in the way of a chosen theme.

As we explained to your reporter, Amy Bobrowski, Cablevision does not charge customers for set-top boxes and other equipment that is lost or damaged as a result of fire. Since we provide service in more than 3 million homes in three states, it is important to have a policy in place to handle these kinds of difficult situations in the same fair way, so we require customers to provide a police report, fire report or insurance claim as documentation of such an incident before gladly crediting an account for lost or damaged equipment.

Clearly we are as concerned as anyone about the difficult circumstances Mrs. Genovese-Garcia confronted as a result of this fire.

Our records show that she did

call to report the loss of her cable set-top box, but did not provide even one of the records mentioned above, which is why she was charged a replacement fee for the equipment.

These charges can always be reversed when the proper documentation is provided, and earlier this week we contacted Mrs. Genovese-Garcia and again asked for a police or fire report. She faxed us copies and was immediately issued a credit for the cost of the destroyed equipment.

Your reporter was made aware of our policy, and these recent events, well before her deadline, but for some reason opted to largely ignore this information in favor of the misleading and highly prejudicial version of events that instead topped this story. She had chosen her theme and was clearly determined to run with it, notwithstanding the facts. We hope the approach, and the result, is as distressing to your readers as it was to us.

ADAM FALK
Vice President, Government and Public Affairs, New Jersey Cablevision Systems Corporation

Memorial Day still has meaning

To The Editor:

America will soon observe Memorial Day and our citizens will engage in various activities that have become associated with this holiday over the years.

Some view the Memorial Day weekend as the beginning of the Jersey Shore season. Others take advantage of the sales that abound while others will kick off the summer with backyard picnics with family and friends.

Whatever we choose to do on Memorial Day we must be mindful of the fact that we have the liberty to participate in such activities because we live in the greatest democracy yet created.

During the course of history our freedom has been threat-

ened by the evil forces of tyranny. But Americans have always held the rights of life, liberty and the pursuit of happiness to be so precious that they are willing to die to protect them.

The true meaning of Memorial Day is to remember the men and women who have made the supreme sacrifice. They died so that we may continue to enjoy the many liberties afforded us by our Constitution and I urge all citizens to remember them on this Memorial Day.

JAMES VIALARD
Commander, Department of New Jersey American Legion Trenton

Association thanks nursing community

To The Editor:

The executive board of the Somerset County School Nurse Association wishes to thank the Somerset County school nurses for their contributions to the health and well-being of their school communities. May 11 was National School Nurse Day. School nurses are healthcare specialists who are the child health experts in our schools. The caring, collaborative coordination of services and compassion of school nurses are at the heart of every school. The Somerset County school nurses conduct ongoing educational seminars and are active in local public health matters. Twenty of the Somerset County school nurses participated in the New

Jersey disaster drill on April 7.

Special congratulations are extended as Marilyn Moynihan, a school nurse from Franklin Township, who has been selected as Outstanding Somerset County School Nurse of the Year. Marilyn is an exemplary role model for her students and colleagues. Her sense of humor, knowledge and caring have enriched many lives. She has held many leadership roles in the Somerset County School Nurse Association and is always willing to lend a helping hand.

CATHERINE A. CHOBOT
Mendham

The writer is the nurse at Bedminster Township School and president of the Somerset County School Nurse Association.

Realty transfer fee increase opposed

To The Editor:

Amid the discussions of Acting Gov. Richard Codey's proposal to reduce or eliminate NJ SAVER rebates, there is another proposal that will affect NJ homeowners that is often overlooked — the proposal to increase the realty transfer fee for the third year in a row.

As president of the Hunterdon/Somerset Association of Realtors, I encourage anyone thinking about buying or selling a home to learn more at www.StoptheRTF.com.

Codey's proposal will raise the RTF on real property sold for \$150,000 to \$350,000. Homes above \$350,000 are already charged a higher fee thanks to last year's increase. What this means is that someone selling an existing home in New Jersey for the average

price of \$330,717 would go from paying \$1,955 to paying \$2,492. Sellers of lower priced homes will also pay several hundred dollars more.

The transfer fee on a home selling for \$200,000 would go from \$935 to \$1,250.

For the third year in a row, New Jersey's Realtors are vigorously opposed to an RTF increase.

We encourage everyone who might someday buy or sell a home to share their thoughts on this issue with the Acting Governor and state legislators by:

— Sending a letter via www.StoptheRTF.com

— Calling Codey and State Treasurer John E. McCormac at (609) 292-6000

LUANN KIDD
2005 President, Hunterdon/Somerset Association of Realtors

The Chronicle

NJN Publishing © 2005
A Penn Jersey Advance, Inc. Newspaper

Publisher	David Tomasini	908-575-6731
Executive Editor	Rod Hirsch	908-575-6684
Editor	Craig Turpin	908-575-6698
Advertising Director	Robin Chandler	908-782-4747
Circulation Manager	Ted Wnoroski	908-575-6670
Production Manager	Linda Zetterberg	908-575-6710



44 Veterans Memorial Drive East, Somerville, NJ 08876

The Chronicle (U.S.P.S. 061-800) ISSN 1047-3351 is published Saturday by NJN Publishing, 44 Veterans Memorial Drive East, Somerville, NJ 08876. 908-575-6660 Periodicals postage paid at Somerville and additional mailing offices. POSTMASTER: Send address changes to NJN Publishing, Fulfillment Office, PO Box 699 Somerville, NJ 08876. Subscriptions rates \$36 per year in advance. \$33 out of Middlesex County and Somerset County, \$36 per year out of New Jersey. To subscribe call 1-800-300-9321.

Circulation: 1-800-300-9321 ■ News: 908-575-6698
Advertising: 908-575-6660 ■ Classified: 1-800-559-9495

The Chronicle is here for you

The following information will help you get your ideas and community news into The Chronicle:

Call editor Craig Turpin at (908) 575-6698 with story suggestions, questions or comments. Information can be e-mailed to middlesex@njnpublishing.com.

The sports editor is Dave Allena. He can be reached at (908) 575-6690.

Our address: The Chronicle, PO Box 699, Somerville, NJ 08876. Our fax number is (908) 575-6683.

Correction policy

The Chronicle will correct errors of fact, context or presentation and clarify any news content that confuses or misleads readers. Please report errors to editor Craig Turpin at (908) 575-6698.

OPSHBX volunteers make it happen

We're only mid-way according to the calendar, but already May has been a banner month for Operation: Shoebox New Jersey 2005.

OPSHBX has been involved in several high-profile events, starting with the hamburger eating contest at the Clinton Station Diner last week, and Saturday's Somerville Operation Supply Line.

About 200 volunteers pitched in to help pack, wrap and ship 600 boxes for U.S. troops deployed in Iraq, including Somerville Mayor Brian Gallagher, troopers from the State Police barracks in Somerville, soldiers from the Armed Services recruitment center in downtown Somerville, dozens of Girl Scouts from the Rolling Hills Council, families and passersby who stopped in at the former home of the U.S. Bicycling Hall of Fame on West Main Street to see what was going on.

Parked out front was Bill and Kim Bruakmann's 4x4 Monster truck "Shockwave," and providing entertainment all day was the Somerville High School Jazz Band.

News 12 New Jersey featured the event on their evening newscast, and Steve Kaiser of Channel 22, host of "On the Loose," filmed for most of the day, and will produce a 30-minute show that will be shown on Cablevision all next month.

We sold several dozen Operation: Shoebox New Jersey 2005 T-shirts, received over \$600 in contributions, made some new friends, and impressed several people who have promised to join the ever-growing circle of OPSHBX volunteers.

Special thanks to Frank Valanzola, vice president of Morgan Stanley for making it all happen, and his fellow brokers from the Somerville office, who pitched in to move bins, boxes and bags from The Chronicle office to the downtown location.

Good kids

A special thanks to Sister Mary Birster, principal of Immaculata High School, and

Rod Hirsch
Executive
Editor



English teacher Veronica LaVista for their willingness to involve the Somerville campus in a 10-day campaign to collect for the troops deployed overseas.

"Our efforts are humanitarian," LaVista said. "That's what Operation: Shoebox is for me."

And, she said, the students got it.

They collected sunscreen, hand sanitizer, toiletries, books and magazines, Pop Tarts, stationary, holy cards, crucifixes, backpacks, crossword puzzles, batteries, phone cards and beef jerky as well as Beanie Babies for the Iraqi children.

"Schools are a phenomenal resource for Operation: Shoebox, and more schools should take advantage of involving students. ... Give them an awareness of the other side of war. That's what community is all about," LaVista said.

"They (the students) were very happy to be involved because their community is directly affected (by the war)," she said.

It might be too late this school year, but principals, teachers and students take note - OPSHBX is an open-ended project, and will continue for as long as there is a need to provide comfort for U.S. troops overseas.

Come September, we'd encourage you to follow Immaculata's example of charity and compassion.

Classic Cruisers

In the past few weeks, we've hooked up with the Classic Cruisers, whose members and their vintage cars take over downtown Somerville every Friday night beginning Memorial Day weekend through Labor Day. Thousands of people walk the streets to ogle the cars, and we're pleased to



GEORGE PACCIELLO/STAFF PHOTOGRAPHER

Immaculata English teacher Veronica LaVista, kneeling at center of photo, helps students at her school sort through bags of supplies destined for shipment to soldiers and Marines in Iraq. The school sponsored a 10-day drive, organized by LaVista, to gather personal items for the soldiers, as well as write letters which were placed in each of the packages that were shipped.

become a part of this Friday night classic, sponsored by Fullerton Ford. We'll be on West Main Street in the center of town with a booth to pass out information about OPSHBX every Friday night beginning next week, as well as collect donations of grocery items and financial contributions to help defray the costs of shipping.

Kelsey Charity Run

OPSHBX has also joined with the organizers of the Kelsey Charity Run, a Bridgewater motorcycle event that continues to grow each year. Held on Father's Day, June 19th, OPSHBX will be on hand for the start of the run at 350 Woodside Lane to collect donations and contributions from participants and spectators. Now in its 10th year, Kelsey's Run has raised over \$750,000. If you're planning to go or participate - and we would encourage you to do so - please bring along a bag of groceries for the troops.

Champagne Open

The 5th annual Champagne Open Charity Golf Tournament June 7th at Beaver Brook Country Club in Annandale promises to be the biggest event yet for OPSHBX, with 150 golfers expected on hand for this charity event. OPSHBX will get a piece of each entry fee - \$800 for a foursome - and a portion of each hole sponsorship at \$250 each.

Former Saturday Night Live comic Joe Piscopo will be on hand, as will Somerset Patriots manager Sparky Lyle and Miss New Jersey USA 2002 Robin Williams and Miss New Jersey USA 2004 Jenaye Ingram.

There will be a hole-in-one contest for a chance to win a Porsche Boxter, courtesy of Ray Catena, as well as raffle gifts. Proceeds will be shared by OPSHBX and the American Heart Association.

Shotgun start is 1 p.m. Further information is available on the website at www.champagneopen.com

Art benefits OPSHBX

Raritan Antique Village is hosting an art sale and silent auction to benefit Operation:

Shoebox New Jersey 2005, a five-day event featuring presentations and demonstrations by the artists that began yesterday.

A portion of the silent auction proceeds raised by the sale of the artwork will be donated to Operation: Shoebox New Jersey 2005.

The antique store is located at 44 West Somerset St. in downtown Raritan.

The show will run for several days with multiple special events throughout the week:

Art Show and Auction Schedule of Events:

Today, 10 a.m.-5 p.m., artwork preview; tomorrow, 6-9 p.m., wine and cheese reception; Saturday, 11 a.m.-2 p.m., refreshments, 1-3 p.m., artist demonstration; Sunday, noon-2 p.m., pastries, coffee, and tea, 3-5 p.m., Silent Auction results will be announced.

This is a great way to find the perfect piece for a home, an office, or even a hotel lobby and help our troops at the same time. To get directions or more information, call Raritan Antique Village at 908-526-7920.

T-shirts for sale

Quality T-shirts with the handsome Operation: Shoebox New Jersey 2005 poster and logo are available.

Several stores on Main Street in Somerville are selling the shirts, which feature the dis-

tinctive red, white and blue Operation Shoebox New Jersey 2005 logo, and a full-color reproduction of the Operation: Shoebox New Jersey 2005 poster.

The shirts cost \$10 and are also available at The Chronicle office, 44 Veterans Memorial Drive East, and at several stores on Main Street in Metuchen. All proceeds from sale of the shirts directly benefit OPSHBX.

Help is on the way

More than 300 employees from the Merrill Lynch corporate offices in Plainsboro will attend tonight's Somerset Patriots game at Commerce Bank Ballpark, and they'll deliver piles of groceries they've been collecting at their office the past several weeks.

Joe Ciulla, a teacher at Bedwell Elementary School in Bernardsville who serves as the community service coordinator, continues to oversee a drive at the school that will continue through May 27 to gather supplies for the soldiers; he's also reaching out to parents for their financial support.

Rod Hirsch is executive editor of The Chronicle. He can be reached at (908) 575-6684 or email rhirsch@njnpublishing.com

Calendar of Events

Through May 21: Special Collection for U.S. soldiers deployed in the Mideast in commemoration of Armed Forces Day (May 21), Wachovia Bank, 758 Route 202 south, Bridgewater (Wegman's Shopping Center), Thursday, 9 a.m.-6 p.m., Friday, 9 a.m.-3 p.m., Saturday, 9 a.m.-noon.

May 19: Commerce Bank Ballpark, Bridgewater, Somerset Patriots vs. Bridgeport Bluefish, 7:05 p.m., fans bringing items for the soldiers will be given a voucher good for one free ticket to a game during the season. (908) 252-0700.

May 21: Volunteers from the South Bound Brook Rescue Squad will collect donated items for the soldiers and Marines outside the Rite Aid Pharmacy, Route 28, Bound Brook.

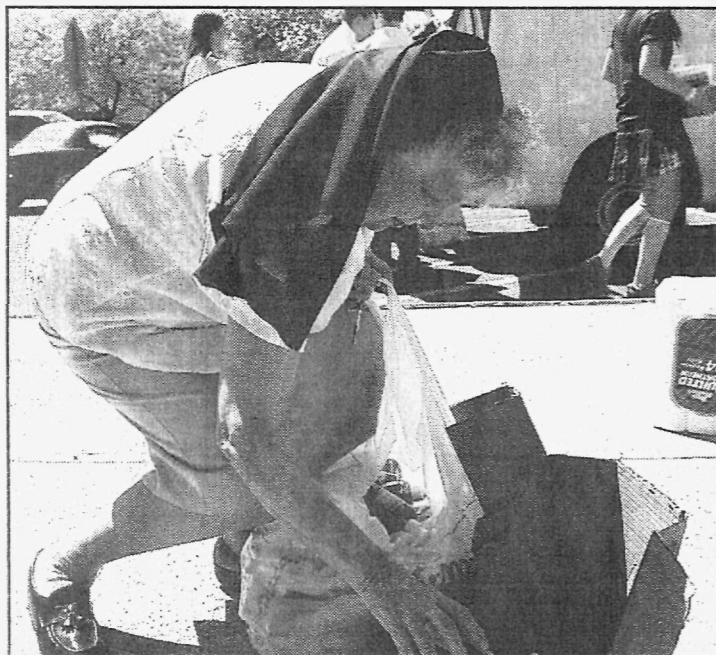
May 27: Classic Cruisers car show on Main Street, Somerville, every Friday night through Labor Day, Operation Shoebox New Jersey 2005 volunteers will collect donations and contributions in front of the United Reform Church, 6-9 p.m.

May 30: Clinton Station Diner, Route 173 & Bank Street, Clinton (off Route 78), 15 percent of the dinner receipts from 4-9 p.m. will be donated to Operation Shoebox. (908) 713-0012.

June 3: Commerce Bank Ballpark, Bridgewater, Somerset Patriots vs. Bridgeport Bluefish, 7:05 p.m., fans bringing items for the soldiers will be given a voucher good for one free ticket to a game during the season. (908) 252-0700.

June 4: Soldiers' Shopping Spree, A&P supermarket, Mountain Boulevard, Warren, volunteers from the South Bound Brook Rescue Squad will collect items from shoppers as they exit the store.

June 7: 5th annual Champagne Open, benefit golf tournament, Beaver Brook Country Club, 25 Country Club Drive, Annandale, 11 a.m. includes 18 holes of golf, hole-in-one contest, hole sponsorships, celebrities, raffles, open bar, buffet. A portion of each entry fee will be donated to Operation Shoebox New Jersey 2005. (973) 514-5219. Visit the website at www.champagneopen.com for more information.



GEORGE PACCIELLO/STAFF PHOTOGRAPHER

Sister Mary Birster, principal of Immaculata High School in Somerville, gathers up bottles of hand lotion from a case that split open last Thursday when students were loading items for shipment to U.S. troops in Iraq.

Operation: Shoebox New Jersey 2005 Drop-off sites:

Somerset County

The Chronicle, 44 Veterans Memorial Drive East, Somerville
Commerce Bank Ballpark, 1 Patriots Way, Bridgewater
The 250th Signal Battalion, 42nd Infantry Armory on Hamilton Street in Franklin
The Somerville U.S. Postal Service office at 39 Division St., Somerville
Somerset County Sheriff's Office, County Administration Building, Grove Street, Somerville
Morgan Stanley, 166 West Main St., Somerville
Mannion's Pub & Restaurant, 150 West Main St., Somerville
Alfonso's Italian Restaurant, 99-101 West Main St., Somerville
Beneath It All, 72 West Main St., Somerville
Wachovia Bank, 1 West Main St., Somerville
Dr. William Moskowitz, 205 West Main St., third floor, Somerville
Somerville Center Antiques, 33 West Main St., Somerville
Shop-Rite Supermarket, 611 West Union Ave., Bound Brook
Girl Scouts of Rolling Hills Council, 1171 Route 28, North Branch
Somerset County Park Commission main office, North Branch Park, Milltown Road, Bridgewater
Somerset County Environmental Education Center, 190 Lord Stirling Road, Basking Ridge
Leonard J. Buck Garden, 11 Layton Road, Far Hills
Warrenbrook Golf Course, Warrenville Road, Warren
Spooky Brook Golf Course, Colonial Park, Amwell Road, Franklin
Raritan Valley Community College Theater and Student Activities office, Route 28, North Branch
Learning Express Toys, 315 Route 206, Hillsborough
Test Sports Club, 1982 Washington Valley Road, Martinsville
US Bicycle Hall of Fame, Main Street, Bridgewater



Powerhouse Gym, Route 22, Bridgewater
Felix #9 Diner, Route 22, Bridgewater
Bedminster Post Office, 251 Somerville Road, Bedminster
Attic Treasures Antiques, Sansone Plaza, Route 22 East, Green Brook

Country Manor Furniture, 272 Route 22 West, Green Brook
Executive Fitness Club, 292 Route 22 West, Green Brook
Shop Rite Supermarket, Route 28, Bound Brook
Dr. Steven C. Balestracci, 154 Adamsville Road North, Bridgewater
Soprano's, 154 Adamsville Road North, Bridgewater
The Cricket, 408 Elizabeth Ave., Somerset
Morgan Stanley, 15 Independence Blvd., Warren
Baja Fresh Mexican Grill, 1595 Route 22 West, Watchung
Attic Treasures, 319 Route 22 East, Sansone Plaza, Green Brook
AAA Vac, 1515 Route 22 West, Watchung Square Mall, Watchung
Borough Hall, Route 22 and Grove Street, Somerville
Gladstone Cleaners, 258 Main St., Peapack-Gladstone
North Branch Post Office, Route 22, North Branch
Somerset Medical Center main lobby, 110 Rehill Ave., Somerville
Capelli Salon, 1171 Route 202 North, Branchburg
Natural Medicine and Rehabilitation, 745 Routes 202/206 South, Bridgewater
Sal's Talk of the Town, 1987 Washington Valley Road, Martinsville
Bucky's/The Closet, 45 So. Main St., Manville
Sherman & Son Jewelers, Bridgewater Commons Mall (second level), Bridgewater
Sherman & Son Jewelers, Somerset Shopping Center, Route 202/206, Bridgewater
Exercise Woman, Route 206 South, Raritan

SALUTE THEIR SACRIFICE

OPERATION SHOEBOX NEW JERSEY 2005

Support Our Troops

Salute the sacrifice of our troops deployed around the world by donating care package items through OPERATION SHOEBOX: NEW JERSEY 2005.

The Reporter, along with our community & corporate partners, are collecting small, personal items that will be packaged and shipped to the brave men and women serving overseas.

Look for our drop-off boxes at a store or business near you! Pick up The Reporter each week for updates and information. For details on becoming a drop off location, contact The Reporter's Executive Editor, Rod Hirsch at (908) 575-6684. Send your message of support today!

We're collecting the following items to be sent to our troops overseas:

<input type="checkbox"/> Suntan lotion	<input type="checkbox"/> Coffee
<input type="checkbox"/> Bug spray	<input type="checkbox"/> Small drink mixes
<input type="checkbox"/> Lip balm	<input type="checkbox"/> Socks
<input type="checkbox"/> Feminine products	<input type="checkbox"/> Clothesline/pins
<input type="checkbox"/> Ear swabs	<input type="checkbox"/> Snack food
<input type="checkbox"/> Laundry detergent	<input type="checkbox"/> Cereal/protein bars
<input type="checkbox"/> Bug wipes/bug strips	<input type="checkbox"/> Fleece blankets
<input type="checkbox"/> Wipes (travel size)	<input type="checkbox"/> Microwaveable foods
<input type="checkbox"/> Razors	<input type="checkbox"/> Hard candy/gum
<input type="checkbox"/> Toilet paper	<input type="checkbox"/> Writing materials
<input type="checkbox"/> Eye drops	<input type="checkbox"/> Batteries (any size)
<input type="checkbox"/> Spices/Tea bags	<input type="checkbox"/> Calling cards

*Donated items must be in their original packaging.

Visit us on the web: www.NJ.com/shoebxj

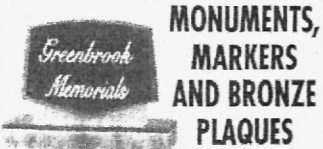
The Reporter | |

UNITED STATES MARINE CORPS RESERVE | A.R.M.S. AMERICAN RECREATIONAL MILITARY SERVICES | UNITED STATES ARMY NATIONAL GUARD

Photo: Jon Neso/The StarLedge. Used by permission



Everything Jersey



**MONUMENTS,
MARKERS
AND BRONZE
PLAQUES**

**Visit Our Large Indoor
& Outdoor Display**

Order Now for
Summer Installation
GREENBROOK MEMORIALS

4 Generations of Memorialists

IMPORTANT NOTICE

Do **NOT** order your Memorial
at the time of the Funeral.

Why purchase a Memorial from
an inexperienced high priced
salesperson - when you can
make your purchase from a 4th
generation memorialist whose
only business is Memorial Sales.

SAVE 20% - 50%

103 Bound Brook Road (Rt. 28 near Ave.)
Middlesex, N.J.

Open 7 Days
Evenings by Appt. **732-968-2543**

Anna Malinowski

SOUTH PLAINFIELD — Anna H. Starzinski Malinowski, 84, died May 9, 2005 at Muhlenberg Regional Medical Center in Plainfield.

Born May 3, 1921 in Sayreville, she was a daughter of the late Frank and Helen Starzinski. Mrs. Malinowski lived in Manville before moving to South Plainfield in 1960. She had resided in Warren since 1998.

She retired in 1975 after more than 25 years as a seamstress with the Robert Manufacturing Co. in Manville. A member of the Amalgamated Clothing and Textile Workers Union, Mrs. Malinowski was also a member of the Warrenbrook Senior Citizens club in Warren.

She was a former member of

the South Plainfield Senior Citizens Club and Sacred Heart Roman Catholic Church.

Her husband, Thomas F. Sr., died in 1974.

Surviving are a daughter, Joanne B. Gallo and husband William of Warren; a son, Thomas F. Jr. and wife Linda of Martinsville; a sister, Edwina Pepsin of South River; a brother, Benjamin Starzinski of Parlin; two grandchildren and three great-grandchildren.

A funeral Mass was held May 13 at Sacred Heart Church, following services at the McCriscin Home for Funerals. Burial was in Holy Redeemer Cemetery.

Donations may be sent to American Heart Association, 2550 Route 1, North Brunswick, NJ 08902.

Minnie Testa

BOUND BROOK — Minnie H. Benedetti Testa, 91, died May 10, 2005.

She was born in Bound Brook and lived in the borough before moving to Manville in 2000.

Mrs. Testa was a homemaker.

Her husband, John J., died in 2001. Three brothers, Anthony Benedetti, Gus Pitoscia and Michael Pitoscia, are deceased.

Surviving are two daughters, Connie L. Adamo and husband Sal of Manville and Madeline A. Bryan and husband Scott of Los Altos Hills,

Calif.; two brothers, Thomas Benedetto of Summit and Salvatore Pitoscia and wife Patricia of Holmdel; a sister, Connie Rotolo and husband Larry of San Diego, Calif.; six grandchildren and four great-grandchildren.

A funeral Mass was held May 13 at St. Mary of Czesochowa Roman Catholic Church, of which Mrs. Testa was a member. Burial was in St. Joseph Cemetery, Bridgewater.

Arrangements were by the Bridgewater Funeral Home. Donations may be sent to St. Mary of Czesochowa Church.

Anthony Daur

MIDDLESEX — Anthony Michael Daur, 56, died May 16, 2005 at the Haven Hospice of JFK Medical Center in Edison.

Mr. Daur was born in Hollis, Queens. He lived in Port Chester, N.Y., before moving to Middlesex.

He was a history teacher for 30 years, first at Montclair Kimberly Academy and more recently at the Morristown-Beard School. Mr. Daur held a bachelor's degree from Fairfield University and studied graduate courses at the University of North Carolina at Chapel Hill.

A member of the Knights of Columbus in Middlesex, Mr. Daur participated in community service projects with Habitat for Humanity and the Newark-based Life Camp.

Surviving are his wife of 30 years, Sharon; a son, Erik; and two daughters, Heather and Kristin.

Services were held yesterday at the Sheenan Funeral Home, Dunellen, followed by a funeral Mass at Our Lady of Mount Virgin Roman Catholic Church. Donations may be sent to Anthony Daur Life Camp Memorial Fund, c/o Sharon L. Daur, 16 Marlborough Ave., Middlesex, NJ 08846.

Robert A. Stefus

SOUTH BOUND BROOK — Robert Angelo Stefus, 50, died March 25, 2005 at his home in Manville.

Born in Somerville, he was a son of the late George Joseph and Theresa Rose Albanese Stefus.

Mr. Stefus lived in South Bound Brook before moving to Manville. He was a porter for more than 20 years at the

Tampa Greyhound Track in Tampa, Fla.

Surviving is a brother, George Michael Stefus of South Bound Brook.

Private arrangements were by the Bridgewater Funeral Home. Donations may be sent to Food Bank Network of Somerset County, P.O. Box 149, Bound Brook, NJ 08805-0149.

Maria P. Mott

MIDDLESEX — Maria P. Popiel Mott, 90, died May 10, 2005 at the Francis E. Parker Memorial Home in Piscataway.

She was born in Carteret and had lived in Middlesex since 1955.

Mrs. Mott was a retired administrative assistant with General Motors Corp. in Linden.

Surviving are a sister, Sophie Anzivino of Chicago, Ill.; a nephew; and many nieces, great-nieces and great-nephews.

Services were held Friday at the Middlesex Funeral Home. Burial was in Bound Brook Cemetery.

In lieu of flowers, donations may be sent to the Alzheimer's Association.

Olga Shemansky

MIDDLESEX — Olga A. Shemansky, 83, died May 15, 2005 at Somerset Medical Center in Somerville.

Born in the Bronx, she lived in Middlesex before moving to Hillsborough in 1981.

Mrs. Shemansky retired in 1992 as an office manager with Gutman Brothers Clothing in Somerville. She was a member of St. Peter and Paul Orthodox Church in Manville.

Surviving are a son, Andrew J. and wife Karen of Middlesex; a brother, Nicholas Babich of Fort Myers, Fla.; and a granddaughter, Stephanie of Middlesex.

Services were held Thursday at the Higgins Home for Funerals, Watchung, followed by a Divine Liturgy at St. Peter and Paul Church. Burial was in St. Vladimir Cemetery, Jackson.

The Reporter
Home Improvement

Somerset Messenger-Gazette • The Chronicle

Home Improvement

Deadline is Noon on Thursday prior to publication

To place your ad call: Christine (908) 894-1082
cdulk@express-times.com

ADDITIONS
VP WOODWORKING INC.
SPECIALIZING IN EUROPEAN & ARCHITECTURAL DESIGN
• KITCHENS • BATHROOMS • DORMERS
• DECKS • BSMTS • PORCHES • PAINTING • GRANITE
• MARBLE • CORIAN • RENOVATIONS • ADDITIONS
Free Est. • Fully Insured
908-289-0991

CARPENTRY
FULLY INSURED • FREE ESTIMATES
CB CARPENTRY LLC
REPLACEMENT WINDOWS & DOORS
DECKS
KITCHENS • BATHROOMS • GARAGES • SMALL ADDITIONS
AUTHORIZED ATRIUM DEALER
TEL: 908-322-2471 • CELL: 908-296-1704

DRIVEWAY
Driveway Sealcoating
FREE ESTIMATES
PRECISION PATCHING
AND
CRACK FILLING
Fully Insured
973-723-8442

LAWN SERVICE
Johns Lawn Service
Affordable Lawn care
Affordable Prices • Owner Operated
Free Est. No Job To Small
908-872-7150

PAVING
DOUGHERTY PAVING
Driveways • Parking Lots
Concrete & Masonry
• Excavation •
Paving Stone • Walkways • Curbing
Free Est. Fully Ins.
908-561-6452

ADDITIONS
CIRCELLI CONSTRUCTION INC.
Additions • Renovations
Roofing • Siding
Masonry • Foundations
Retaining Walls • Patios
Free Est. Fully Bonded & Ins.
Established 1969
908-647-6251

CARPENTRY
Advanced Carpentry Services, LLC
FREE EST. FULLY INS. 20 YRS. EXP.
Alterations • Attics • Bas'ts • Painting
Custom Decks / Restorations
Int/Ext Doors • Garages
Kitchens • Baths • Replacement Windows
732-424-8200 • 800-710-1151

ELECTRIC
Destiny Electric, Inc.
732-563-4734
Fully Bonded & Insured • Over 10 Yrs. Exp.
Evenings & Weekends Available
Resid / Comm. • Industrial
No Job Too Small • FREE Estimates
NJ License / Business Permit No. 14799

MASON
Bravo Construction
Steps • Sidewalks • Patios
Brick/Block Pavers
All Stucco Work
Concrete/Asphalt Driveways
Free Est. Ref. Avail. Fully Ins
908-387-9810

PLUMBING
Your Local PLUMBER!
Specializing in New Installations.
Replacements, Repairs & Emergency Service
24 hours / 7 days Fast & Reliable
Master Plumber for over 20 years. Lic#6862
Call **908-359-1766**
ALL WORK GUARANTEED! FULLY INSURED

AIR CONDITIONING
RETIRED H. V. A. C Contractor
35 YEARS EXPERIENCE IN BUSINESS
A/C SPRING & SUMMER
STARTUP SPECIAL
1 ZONE: \$49.99 • 2 ZONE: \$79.00
FREE FILTER CHANGE: IF UNIT NEEDS REPAIR.
HUGE DISCOUNT ON PARTS & LABOR
WE CAN ALSO PROVIDE SERVICE ON:
FURNACE • A/C UNITS • HUMIDIFIERS
DUCT CLEANING • HOT WATER HEATERS
ELECTRONIC AIR CLEANERS
FULLY INSURED FREE ESTIMATE
PHONE: **908-719-9684**

CARPENTRY
PROFESSIONAL CARPENTRY
Roofing • Siding • Windows
Doors • Porches • Decks
Most Repairs • Free Est
35 Yrs Exp. Call Len
908-561-4073

EXCAVATING
Vince DeFilippis
Excavating and Landscape Contractor
Quality Top Soil & Mulch Delivered
Loader • Backhoe • Bulldozer Service
Free Est. Fully Ins.
732-469-1270

MASONRY
SUNSET PINES 2001 MASONRY
BASEMENT WATERPROOFING • FRENCH DRAIN
ALL TYPES OF CEMENT WORK
STEPS • PAVING BRICK • STONE WALLS
PATIOS • SIDEWALKS • BLUESTONE ETC.
CARPENTRY AVAILABLE
908-522-1544

POOLS
ST. NICK POOLS
Family Owned and Operated For 20 Years
Renovations • Paver Decks • Repairs •
Swim Spa Dealer • Fiberglass Pools • Waterfalls
Offices in:
Berkeley Heights, Plainsboro and Long Beach Island
Call Nick (908) 464-3323

BUILDING & REMODELING
AMERICAN HOME REMODELING
100% FINANCING
Interior/Exterior Improvements
NY/NJ Licensed & Insured
Vinyl Siding • Roofing • Windows
Doors • Masonry • Stones & Steps
10% OFF w/Ad
800-942-5541 • Fax: 973-374-9446
E-mail: AmericanHome1@aol.com
Web: www.Improvetoday.com

CLEANUP SERVICES
AL CLEAN UP
Yards • Cellars • Garages • Etc.
Estate Clean Outs
"We Are The Cheapest"
10% Off w/Ad
732-257-7197 • 800-888-0929

GUTTERS
GUTTERS & LEADERS
Expertly Cleaned & Flushed
From \$50-\$70
• Repairs •
Quality Gutter Screening Installed
Call Glen Stevens
973-398-1485

OIL TANKS
MIKE WATERS
OIL TANKS & BOILERS
FILLED/REMOVED
DEP APPROVED • ENVIRONMENTALLY SAFE
908-964-4860

TREE SERVICE
COUNTRYSIDE TREE EXPERTS
www.countrysidetreeexperts.com
• Pruning & Trimming •
• Land Clearing •
• Stump Removal •
• Crane Services •
• Tree Removal •
• Landscaping •
• Snow Plowing •
• Firewood •
Fully Insured - Free Estimates!!
20 Years Experience • Residential / Commercial
CALL THE EXPERTS
1-888-638-9405

BUILDING • REMODELING
DECKS UNLIMITED

We build all sizes and shapes
10 year guarantee

All our workmanized &
cedar lumber guaranteed
Free Estimates - Fully Guaranteed
908-707-4447

CLEAN-UP SERVICE
DANCE
Demolition & Clean-Up
"We Clean-Up • Not Your Pockets"
All Types of Debris Removed
Attics • Basements • Garages
Demolition-All Phases of Interior • Exterior
Bathroom • Kitchen Specialists
908-759-1463

LANDSCAPE
WATCHUNG HILLS LANDSCAPING
Lawn Maintenance • Landscaping
Mulch & Fertilizer Program
Brick Pavers • Retaining Walls
908-707-4527

PAINTING
M.T.M. Painting Co.
Interior & Exterior Painting
Power Washing
Fully Insured Free Estimates
Todd Mata
732-690-0429

To place your
ad call:
Christine
(908) 894-1082

DISPOSAL
D. Banks
Disposal Company
Waste Removal & Disposal Service
All Types of Debris Removed
908-756-6557
908-447-7117 Cell

To Advertise
Call Christine
908-894-1082
or E-mail:
cdulk@express-times.com

PAINTING
Billee's Painting Co.
"When Only The Best Will Do!"
Interior / Exterior
Painting, Power Washing,
Staining, Wall Papering, Spackling
Fully Ins. with 23 Years Experience
Estimates Free
732-752-9245

Campus Notes

Two area students have received scholarships of \$2,500 each from the National Merit Scholarship Corp.

The students are among more than 2,500 National Merit finalists whose names were released this week. Among the recipients are: **Leon Bergen** of Highland Park, a senior at the Peddie School in Hightstown. He plans a career in education. Also receiving a scholarship is **Yintao Sun** of Edison, a senior at John P. Stevens High School who plans a career in financial analysis.

Each recipient qualified as a finalist through the PSAT/National Merit Scholarship Qualifying Test taken in 2003 and selection as a semifinalist in the fall.

Selection is based on academic record, school activity, community activities, an essay on his goals and a recommendation from a high school official.

Stacy Beth Ellen of Metuchen was a dancer in the Franklin & Marshall College production of "Sugar." The musical played from March 24-26 in the Roschel Performing Arts Center, located on the college's campus in Lancaster, Pa.

Ellen is a senior majoring in Spanish and biology at Franklin & Marshall College. The daughter of Joan and Barry Ellen is a 2001 alumna of Metuchen High School.

Four area students were named to the dean's list for the

winter 2005 term at Johnson & Wales University in Providence, R.I. They are:

Shade Coleman of South Plainfield, studying for an associate's degree in restaurant management.

Jeremy DaSilva of Edison, studying for an associate's degree in hotel management.

Melissa MacNicoll of Piscataway, studying for a bachelor's degree in management.

Jossue Salazar of Middlesex, studying for an associate's degree in marketing.

Dory Chamoun of Bound Brook spent a week in Europe studying the continent's hospitality industry. She is a senior majoring in hotel and restaurant management at Fairleigh

Dickinson University, which has campuses in Teaneck and Madison.

Michael A. Perinelli was named to the dean's list for the fall 2004 semester at Dickinson College in Carlisle, Pa. He is a sophomore majoring in political science and religion.

An alumnus of Bishop George Ahr High School in Edison, Perinelli is the son of Philip and Elizabeth Perinelli of North Plainfield.

Five area students were named to the dean's list for the fall 2004 semester at Syracuse University in Syracuse, N.Y. They are:

James Garcia of South Plainfield, a sophomore major-

ing in architecture.

Eleazer Gorenstein of Metuchen, a sophomore majoring in newspaper journalism at the S.I. Newhouse School of Public Communications.

Stefanie Lampf of Edison, a senior majoring in psychology and television, radio & film at the S.I. Newhouse School of Public Communications.

Joshua Seidner of Edison, a senior majoring in architecture.

Laura Victor of Edison, a sophomore majoring in advertising at the S.I. Newhouse School of Public Communications.

Gregory Louis Publik of South Plainfield was named to

the dean's list for the fall 2004 semester at the University of South Carolina in Columbia, S.C.

Twelve area students were named to the dean's list for the fall 2004 semester at Quinnipiac University in Hamden, Conn. They are **Kristina Armer** and **Caitlin Macaulay**, both of Middlesex; **Stephanie Caiella**, **Jonathan Licciardi** and **William Zullo**, all of Piscataway; **Shannon Conniff** and **Daniel Palumbo**, both of Metuchen; **Megan Fitzpatrick**, of Dunellen; **Christina Furka**, of South Plainfield; **Scott Kliff**, of Highland Park; **Kristin Savulich** and **Kathryn Ur**, both of Edison.

Senior Citizens Calendar

Bound Brook

The Bound Brook Seniors meet 7 p.m. the first Wednesday of each month in Asbury Hall of the Bound Brook United Methodist Church, 150 W. Union Ave.

Upcoming Trips and Events:

For information, call President Frank Gilly at (732) 356-6310. Non members are welcome.

May 31-June 2 — The Hamptons — \$375 (non-members welcome), Call Frank (732) 356-6310 for details.

Senior Leisure Club of St. Mary's

Event Schedule:

May 22 — Spring Social, 4 p.m. school cafeteria.

Middlesex Borough

Our Lady of Mount Virgin Seniors meet the second Tuesday of the month, at 1 p.m. in the church hall.

Members are asked to bring boxes of pasta for F.I.S.H. For information on trips call Ellie Procacci (732) 752-3093 or Mary Jane Stoddard (732) 356-2093.

Trips and Events:

May 27 — Hunterdon Hills Playhouse, "Best of Branson" (bus is filled)

Piscataway

The Piscataway Senior Center has announced its schedule of upcoming events at the center, located at 700 Buena Vista Ave., behind the J. F. Kennedy Library on Hoes Lane (Rt. 18). Sign up at reception desk.

May 24 — 1 p.m. Health and Fitness Fair.

May 25 — 1 p.m. Spotlight on Fun Fitness.

May 26 — 10 a.m.

Competition Day.

Lunch will be served each day (May 24 to 26) at 11:30 a.m. for those who register at least one day in advance.

South Bound Brook

The South Bound Brook Senior Citizens Community Club meets at 2 p.m. June 1 at Our Lady of Mercy Church Hall, 122 High St.

Bingo is played every Wednesday and refreshments are served.

A box of pasta per member will be collected at the meeting for the food bank.

The club is open to all seniors, 55 years and older residing in South Bound Brook. Open enrollment to the club for non-residents of South Bound Brook will be May 1 through May 31. For information, call Catherine (732) 356-4080.

Coming Events/Trips:

June 7 — Atlantic City, Showboat

July 20 — Picnic

August 18 — Three Little Bakers-Bye, Bye Birdie

South Plainfield South Plainfield Chapter AARP, # 4144 held its last meeting May 16 at 12:30 p.m. at the Senior Center on Plainfield Avenue. Election of officers was held and the officer's installation will take place June 17 at a luncheon at the Willows.

Event Schedule:

May 24 — The Villa —

"Broadway in Concert" featuring live songs from "Cabaret" and Chicago." Leave PAL building 10:15 a.m. For reservations, call Lee (732) 968-6613 and leave a message.

DON'T REPLACE YOUR OLD BATHTUB... REGLAZE IT! \$279

We also do Sinks, Tile, Tub Surrounds & Color Travel Charge May Apply

W/Coupon regularly \$355 **SAVE \$76**

Now serving Southern, NJ www.easternrefinishing.com

EASTERN REFINISHING CO. • 800-463-1879

COUPON EXPIRES 5/25/05

DONATE A CAR

Support NJ Animal Rescue

Tax Deductible 1-800-293-7490

Tax Forms & Receipts Produced

FREE Pick-up within 24 hours

Email info@autosalvation.com • www.autosalvation.com

SERVING ALL YOUR DAY CAMP NEEDS FOR 27 YEARS!

For Boys and Girls ages 3 - 12 June 20 - August 26 • 7 am - 6:30pm

DRAMA

FUN TRIPS

ARTS & CRAFTS

GAMES & GYMNASTICS

SPORTS

WEEKLY THEMES

AND MUCH MUCH MORE!!

SWIMMING

KING GEORGES DAY CAMP

Located at Helping Hands Learning Center

1017 King Georges Post Road, Edison • (732)738-0600 or (732)225-7400

www.helpinghandspepperminttree.com

LOWEST RATES UNDER THE SUN

NEW HOPE BAPTIST CHURCH

45 Hampton Street, Metuchen, NJ 08840

(732) 549-8941

Rev. Ronald L. Owens, Sr. Pastor

Sunday Worship Services at 8am & 11am

1st & 5th Sundays at 9:30 am

Wednesday Bible Study 12noon & 7pm

Wednesday Prayer Meeting 6pm

Saturday Church School 9am

"Where worship is joy and joy is worship"

www.nhbchurch.com

TRUE COMMUNITY BANKING. COOL.

UNITY BANK

800.618.BANK

unitybank.com

Wood Gym Outlet

100% Redwood

Prices Starting \$879

Call For Free Catalogue 1-800-321-4967

199 Rt. 22 East (Between Warrenville & Washington Ave) Green Brook

INFO LINE of Middlesex County

HELP IS ONLY A PHONE CALL AWAY.

Now also The Homeless Hotline of Middlesex County.

Info Line of Middlesex County can help you locate services for:

Financial Assistance	Counseling	Healthcare
Housing	Food/Clothing	Support groups
Addiction Services	Senior Services	HIV/AIDS

... and much more.

24 Hours A Day ... 7 Days A Week.

Dial Toll Free 2-1-1 or 1-888-908-4636

Visit our on-line directory at: www.info-line.org

Spring Into Action

ideal tile of edison

"Our Name Says It All"

- Genial Staff
- Great Showroom
- Gorgeous Selection
- Guaranteed Installations Available

Now Open Sundays

WICK PLAZA • EDISON

RTE. 1 at PLAINFIELD AVE.

(732) 819-8000

NURSERY • GARDEN • STONE • LANDSCAPE CENTER

Complete Landscaping Services

- Patios
- Driveways
- Walkways
- Retaining Systems
- Custom Plantings
- Drainage Systems

Family Owned and Operated for over 30 Years. Guaranteed Workmanship

FOUR SEASONS NURSERY

STONE & LANDSCAPE CENTER

Visit Our New South Plainfield Location (Formerly Moore's Stone & Garden Center)

430 Hamilton Blvd., South Plainfield

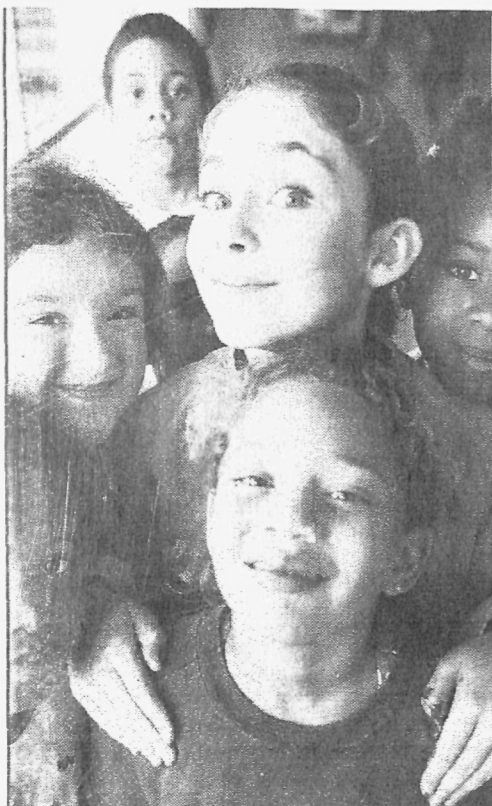
Nursery 908-757-4646 Construction 908-272-5422

ONE STOP CALL FOR ALL YOUR NEEDS • NOW OPEN 7 DAYS A WEEK

BULK SALES: Top Soil, Mulch, Stone

All Landscape Materials

Delivery Available



CAMP LENAPE

Run by Metuchen Branch YMCA at Christ United Methodist Church 485 Hoes Lane, Piscataway, NJ

• Traditional Day Camp • Specialty Camp
Ages 5-15

Camp Hours: 8:30 a.m. - 4:30 p.m.
Extended Hours: 7:30 - 8:30 a.m. • 4:30 - 6:00 p.m.
FEE: \$20 per week FEE: \$25 per week

\$180 for 5 days
\$150 for 4 days
\$130 for 3 days
FEES GO UP AFTER JUNE 1ST,
REGISTER TODAY!

Call 732-548-2044 for details
or register online at
www.metuchen-edisonymca.org

EVERYBODY PLAYS, EVERYBODY WINS



We build strong kids,
strong families, strong
communities

Operation: Somerville Supply Line delivers the goods to U.S. troops

By ROD HIRSCH
Staff Writer

SOMERVILLE - Mayor Brian Gallagher was there with two of his sons, poking through the bins, grabbing granola bars, sticks of gum, hard candy and beef jerky.

Two State Troopers from the Somerville barracks joined in, filling their boxes with bars of

soap, shampoo, razors and shaving cream.

Outside, the Somerville High School Jazz Band entertained passersby, and Bill and Kim Braukmann showed off "Shockwave," their bright yellow 4x4 monster truck.

Dozens of Girl Scouts from the Rolling Hills Council scurried about, joining the long

line inside that snaked around the tables holding the oversized bins, standing on their toes to reach in and select toothbrushes, toothpaste, eye drops, wipes and mouthwash.

Students from Immaculate High School wrote out address labels and Army Sgt. Philip Martir from the downtown recruiting station led several

more soldiers in camouflage fatigues around the tables to pack boxes for their fellow soldiers deployed in Iraq.

More than 200 volunteers responded to the call from the District Management Corp., local merchants, The Chronicle newspaper and other organizations that have come together to support Operation: Shoebox New Jersey 2005, a broad-

based grass roots effort that has been sending supplies to U.S. troops overseas since February.

"It was truly a worthwhile event," said organizer Frank Valanzola, a vice president with Morgan Stanley in the Somerville branch office. "In preparing for this event, there were often times when exhaustion and fatigue set in; my first

thought at each point of resistance was that our soldiers don't have the luxury of pausing when they're tired, or leaving the battlefield.

"I was inspired by the number of volunteers," he added, "and the way in which they cooperated and willingly gave of themselves and their time to accomplish the goal of packing 600 boxes."

Mayor George A. Spadaro
& The Edison Council

Invite you to the 8th Annual

Experience
Edison

Sunday
May 22, 2005
Rain or Shine

Bike Tour

Begins At:

Edison Municipal Complex

Registration begins at 8:00 am • Tour begins at 9:00 am

SHORT STOPS INCLUDE:

- Minnie B. Veal Community Center
- Thomas Edison Tower & Museum
- The Commons

ALL Participants **MUST**
wear a helmet
Children under 14
MUST be accompanied
by an adult
SAG VEHICLE AVAILABLE

FOR MORE INFORMATION

Central Jersey Bike Club
Mike Krulmer: 732-287-9447
Email: tandem2@erols.com

Middlesex Greenway Coalition
Walt Stochel: 732-906-0529
Email: wstochel@earthlink.net

Edison Recreation Department
Denise Halliwell, Director
732-248-7309
Email: DHalliwell@edisonnj.org

PRE-ARRANGED
SPOTS FOR
FAMILIES TO
ENTER AND EXIT
THE TOUR

INVESTORS HIGH YIELD CHECKING 3.00%^{APY*}

Investors High Yield Checking lets your money make more money. Enjoy the flexibility of a checking account, the high rates of a money market account, unlimited check writing, plus free Online Banking with Bill Pay and much more. The bigger your balance the higher your rate of return—3.00%^{APY*} on balances greater than \$100,000. Make the most of your money today.



Call or visit one of our 46 conveniently located branches near you today.
1.800.252.8119 www.isbnj.com

*Annual Percentage Yields (APYs) are effective as of 5/11/05 and are subject to change without notice. Please call for current rates. Funds transferred from other Investors Savings Bank accounts not eligible. \$2,500 minimum balance requirement to avoid \$10 monthly fee. Fees could reduce earnings.

Member FDIC

Sister Mary gives her blessing

By JIM WHITE
Staff Writer

SOMERVILLE — When it's all over, people like Sister Mary Birster and her staff will find gratification in knowing they sought no reward or

recognition in making things a bit more comfortable for the American men and women who were sent to Iraq.

"It's not about who is doing it, but what is being done. It's about the net result, not the recognition," Immaculate High School's humble principal said last week as an army of ninth- through 12th-graders packed a full-size Chevy cargo van — front to back, top to bottom — with what seemed like an endless supply of personal items, snacks, letters and other supplies appreciated by the troops and collected by the students, their families, school faculty and area businesses, including Ethicon. The day was another highlight of the Operation:

Shoebox New Jersey 2005 program, a team effort between The Chronicle newspaper and numerous organizations, companies, families, veterans and volunteers to maintain a supply line to U.S. soldiers and Marines serving in Iraq and the Mideast region.

Sister Mary gave the program her blessing after Veronica LaVista, a ninth- and 10th-grade English teacher at the school, received an e-mail from the father of one of her students thanking her and her classes for praying for him while he is in Iraq.

A modest LaVista said the e-mail touched her, and she wanted to find a way to support the troops in addition to prayer.

"I don't think people should be pew-potatoes," she said.

"I had gotten this beautiful e-mail on Dec. 17 from (Army) Major Sal Abano. At first I thought it was a joke because the dateline said Iraq/Kuwait," she said. "He had heard from his daughter that my classes had prayed for him. What struck me was the picture he presented of the war. It was so different from the news. I was moved to take a more active role in raising the spirits of our young men and women in the service. ... So I contacted this newspaper."

LaVista said she learned from Abano that a large part of the war involves humanitarian work on the part of U.S. troops, but it's the insurgency that makes headlines and television news stories.

She said the supplies they had collected since the end of last month can aid the troops in getting the Iraqis back on their feet.

"Our efforts are humanitarian," LaVista said. "That's what Operation: Shoebox is for me."

And, she said, the students got it.

They collected sunscreen, hand sanitizer, toiletries, books and magazines, Pop Tarts, stationary, holy cards, crucifixes, backpacks, crossword puzzles, batteries, phone cards and beef jerky as well as Beanie Babies for the Iraqi children.

"Schools are a phenomenal resource for Operation: Shoebox, and more schools should take advantage of involving students. ... Give them an awareness of the other side of war. That's what community is all about," LaVista said.

"They (the students) were very happy to be involved because their community is directly affected (by the war)," she said.

Jennifer Bright Dismukes, a 1990 graduate of Immaculate High School is currently serving in Iraq.

So is James Bunting, a 2003 grad.

Dennis T. Burke, the nephew of a nun at the school, is over there, as are Jonathan Seiter and Eugene Seiter III, the cousins of a student at Immaculate High School.

And, of course, Sal Abano, who has been in Iraq for about seven months now with the New Jersey Army National Guard 250th Signal Battalion as an operations and training officer.

"I feel proud of him," said his daughter, Jackie Abano, a sophomore. "But it's different. It's sad. At night we sit down for dinner and he's not there. ... It's been very difficult for my family, but we're taking it one step at a time and are very fortunate to have each other."

She added: "My mom has been doing better than I could ever expect. Mom's been strong. She's hanging in there."

To get involved with Operation: Shoebox, call Rod Hirsch, executive editor of The Chronicle, (908) 575-6684 or e-mail rhirsch@njnpublishing.com.

**PARTY
SPA**
\$2499⁰⁰
www.pelicanpool.com
(908) 534-6603

GORGEOUS INGROUND POOLS • 1.800.298-2658
POOLS
superbpoools.com
ALSO LINER REPLACEMENTS
2000 OFF

**POOLS • GRILLS
PATIO SETS • SPAS**
LOWEST PRICES IN NEW JERSEY

We guarantee, in writing, to be AT LEAST
10% LOWER ON ALL IN-STOCK ITEMS than any
competitor within a 30 mile radius

Over 150 sets on display by:
Woodard - Winston - Hemecrest - Tropitone - Lloyd Flanders
- Telescope - Cast Classics - Jensen Jarrah - Lane Ventura
- Hanamint - Lifetime Teak - Weber - D.C.S. - Ducane - Cal Spa

Area's Largest Selection of Gas Grills, Bar Stools,
Patio Furniture, Wicker ALWAYS DISCOUNTED
25-60% OFF MFG. LIST EVERY DAY.

GRILLS • GRILLS • GRILLS
FREE ASSEMBLY & DELIVERY ON ALL WEBER & DUCANE & DCS GRILLS...

Silver A	\$399
Silver B	\$499
Silver C	\$549
Gold B	\$699/\$599
Gold C	\$749/\$669
Gold B4	\$1200/\$1099
Gold B6	\$1500/\$1499
Gold A5	\$1100/\$999

**Pelican POOLS, SPAS, GRILLS
& PATIO FURNITURE**
LOWEST PRICES IN NEW JERSEY!

5 miles West of
Bridgewater Commons Mall
WHITEHOUSE • RT 22 EAST (908) 534-2534
Hours: Mon-Fri 9-8 Sat & Sun 10-5
Check Out pelicanpool.com for great coupon savings

Smile. You're home now.

At Summit Federal, we know it's your family that counts. Giving them a great home really matters, too. So we make it easier to buy your home and help you feel more secure in your decision. To find out more about the mortgage plans shown here, just give us a call. We'll be glad to show you how we've been making buying a home easier for families since 1891. Because your family is what counts.

**10-YEAR CONVENTIONAL
No Points!**
4.875% Rate
4.965% Annual
Percentage
Rate

**15-YEAR CONVENTIONAL
No Points!**
5.125% Rate
5.191% Annual
Percentage
Rate

CALL OUR MORTGAGE HOTLINE FOR OTHER COMPETITIVE RATES AND TERMS
732-968-0665

www.summitfsb.com
**Summit
Federal Savings Bank**
Where customers count.

441 Springfield Ave.
Berkeley Heights
908-464-0860

55 Highway 22
Clinton
908-735-7000

393 Springfield Ave.
Summit
908-273-8150

388 Route 57 West
Washington Twp.
908-689-0700

Dunellen Office: 205 North Washington Ave. • 732-968-2864

Senior NOW Account holders, come in and see what's new for you!

For example, for every \$1,000 borrowed at a rate of 4.875%, your monthly principal and interest payment would be \$10.55. For every \$1,000 borrowed at a rate of 5.125%, your monthly principal and interest payment would be \$7.98. Monthly payments do not include property taxes, mortgage insurance or any other additional costs that may apply. 20% down payment is required. Rates subject to change.



Member FDIC

Sports

Saturday, May 21, 2005

Washington leads Piscataway to crown

SOUTH PLAINFIELD — While entering Saturday Greater Middlesex Conference Track & Field Championships as one of the top sprinters around, Piscataway High's Asia Washington left her mark as few have done in the past.

Competing in the 200 and 400-meter dashes, the long jump and 1600 relay Washington came through with four gold medals to lead the Chiefs to the team championship by a 90-83 over Old Bridge as Piscataway defended its crown and avenged a one-point loss in the last week's GMC relays to the Knights.

Washington owned the meet with her jaw-dropping performance that included a meet- and county-record shattering efforts in the 400 meters and an anchor leg on the relay squad that broke another meet standard.

In the 400 Washington raced to a 55.83-second clocking that destroyed the 56.54 mark produced by Bishop Ahr's Natasha

Norville in 2003, while she followed Michelle Losey, Collene Cumberbatch and Ayana West in the relay with a 55.6 split as Piscataway claimed the top spot in 3:54.79 to surpass erase the 3:59.2 standard the Chiefs set last spring.

Washington narrowly missed a third record when her 18-foot, 2-inch leap in the long jump fell an inch shy of the meet standard, while she also captured the 200, winning in a fast 25.1 seconds.

Along with her leg on the relay Losey contributed a pair of runnerup finishes behind Washington, taking second in the 200 (25.6) and in the 400 (57.25) while adding a fourth in the 100 (12.76).

Nike Isajola chipped in with 22 points for the champions with two second places — running a 15.55 in the high hurdles and 1:06.75 in the 400 intermediate hurdles — and a third in the high jump (5-0).

Latoya Dixon of J.P. Stevens and South Plainfield's Nicole

GMC TRACK & FIELD

Miglis won two events apiece to pace their respective teams, which shared fourth place with 45 points apiece.

Dixon captured the high jump at 5-2 and the high hurdles with a 15.24-second showing while adding a third in the intermediate hurdles on 1:07.26. Miglis posted her double in the middle distance events, taking the 800 in 2:21.4 and the 1600 in 5:17.65.

Kristen Edmonds of Metuchen finished second to Washington in the long jump with a 16-10 effort, while taking thirds were South Plainfield's Krystal Williams in 100 (12.66), Latoya Johnson in the shot put (35-9) and Jen Okuzuki in the pole vault (8-0) and Kathryn Ruhno of J.P. Stevens in the javelin (111-1).

On the boys side Rob Damon delivered the top individual performance by an area

athlete as he claimed gold medals in the high jump at 6-4 and 800 in 1:59.00 while anchoring the 1600 relay team, which included Malcolm Jenkins, Rob Williams and Jon Francois, to first place in 3:22.86.

Jenkins had strong showing for the Chiefs, who tied for third in the team standings with East Brunswick at 53 behind Old Bridge (91) and South Brunswick (82), but fell short in a pair of record-breaking races by Old Bridge's Bryant McCombs, who won the 200 in 21.25 as Jenkins took second in 21.87 and the 400 in 47.27 as Jenkins was second in 48.56.

J.P. Stevens swept the hurdles for all 20 of its points as Brian Sutherland captured the intermediates in a torrid 53.96 and Alex Lerner earned the gold in the highs in 14.80.

Metuchen, which finished six with 29 points, got a second in pole vault from Greg Lewis, who cleared 12-0, a second in the relay in 3:26.57 and a third in 400 hurdles from Kyle Edmonds (56.67).

Albert Carter produced Middlesex's 10 points when he established a new meet standard in taking the triple jump. Carter went 43-3 to better the 42-1/4 put up a year ago.

MVC MEET

Ryan Malloy turned in a meet-best three individual victories to lead the way and the Bound Brook boys won six events in all in finishing second in the Valley Division at the Mountain Valley Conference championship May 11.

Setting three personal-best in the process Malloy captured the 200 in 23.0, the 400 in 49.6 and the 800 in 1:58.7 to earn 30 of the Crusaders' 100 points, which placed them behind New Providence (141) in the seven-team field.

Tommy Matalenas took the 400 hurdles in 58.7, Julio Rodriguez cleared 5-8 to win the high jump and Chris Villeda grabbed top honors in the 1600 in 4:38.9. Villeda added thirds in the 800 (2:02.1) and the 3200 (10:54.5), while Jordan Barrett finished third in the 100 (11.3) and the 200 (23.6) as did the relay.

The Bound Brook girls also placed second, finishing with 113 points behind New Providence (213) with Holley Kline jumping 4-6 to take the high jump as the Crusaders' only first place.

Sammy Parades was the top scorer with 22 points as she took second in both the 100 (13.5) and the 400 (1:03.5) and third in the 200 (28.1). Lynn Le finished second in the 1600 (6:02.3) and third in the 3200 (14:08.8), while Sailyma Houston had a second in the 800 (2:33.2) and Katherine Ruddy took second in the 400 hurdles (1:12.5). The relay squad also took a third.

Edison, South Plainfield reach quarters

Squaring off with their township rival for the third time this spring the fourth-seeded Edison High baseball squad used a strong performance from Nate Fabretti on the mound and some timely hits in the third round of the Greater Middlesex Conference Tournament to trim 11th-rated J.P. Stevens 6-3 Saturday.

Fabretti worked the first six innings and allowed one hit for his fifth victory to remain unbeaten as the Eagles improved to 13-9 and earned a berth in the quarter-finals, which were scheduled Wednesday, against Old Bridge.

Edison notched singles runs in the first and second innings against Hawk starter Doug Wallner, and then iced the game in the fifth with a four-run outburst. Phil Okner singled in the first run and John Mendez belted a two-run homer to highlight it. Fabretti also had two of the six Eagle hits.

Stevens, which dipped to 11-11 with the setback, wasted a triple by Gary Turner in the third but made interesting in the top of the seventh when John Book delivered a two-run triple. Nick Reider, however, struck out the final batter to escape a bases-loaded situation.

South Plainfield 14, Metuchen 4 — Bill Merkler hit his fifth and sixth home runs of the season to open and close an eight-run outburst in the bottom of the fifth inning as the sixth-ranked Tigers overcame a 4-2 deficit to put away 22nd-seeded Metuchen in six innings in the third round of the GMCT Saturday.

Merkler, who broke the 27-year school mark of Al Moran for home runs in a season with his sixth, finished with six RBI, with four coming on a grand

GMCT BASEBALL

slam. Chris Bakazan also homered for South Plainfield, going back-to-back with Merkler to start the fifth.

Mike Stallone and Mike Downes (4-2), who also earned the pitching decision, had doubles for the Tigers, who moved to 15-6 on the season and gained a berth in the quarter-finals opposite John F. Kennedy.

Gerard Mongiardini sparked the early sure for the 10-10 Bulldogs, who took an early lead with three runs in the second, by going 3-for-3 and scoring twice.

J.P. Stevens 9, Woodbridge 8 — Anthony Montalbano singled home the winning run after Jason Callender and Adam Kramen had belted back-to-back opposite field homers as Stevens rallied for three runs in the bottom of the seventh to out 20th-rated Woodbridge (6-16) May 12.

Kramen (2-1), who finished 4-for-4, also had a three-run homer, and also earned the pitching victory for the Hawks, who had five of their 13 hits go for extra-bases, including a pair of doubles by Gary Turner. Callender also had a pair of hits for the winners.

Metuchen 3, South Amboy 2 — Squaring off with 11th-seeded South Amboy (16-4) in the second May 12 the Bulldogs posted the upset and gained a state tournament berth in the process as Mike Huntress allowed four hits over five innings and Mike Karsia two scoreless innings of hitless relief.

Metuchen managed only three hits in the game but two came at the right time as Lenny



LARRY MURPHY/CORRESPONDENT

Edison High shortstop Dave Zavistoski is upended by Doug Zemeckis of J.P. Stevens during a game earlier this season. The Eagles and Hawks met in the GMC Tournament Saturday with Edison building a 6-0 lead and holding on for a 6-3 victory to reach the quarterfinals.

Bing followed two walks and an error with a bases-loaded two-run single and Chris Callas knocked in a run with a single as the Bulldogs grabbed a 3-1 lead in the third and held on for a third straight one-run triumph.

Bishop Ahr 6, Piscataway 4 — After scoring two runs in the fourth third and another in the fifth for a 4-2 lead the 17th-seeded Chiefs surrendered a grand slam in the bottom of the

fifth and couldn't recover in falling to 16th-ranked Bishop Ahr (11-5) May 12.

Ken Walker singled in a run in the fourth, while Russ Hopkins beat out an infield roller to score a run in the fourth for the Piscataway, which was eliminated from the conference tourney and also fell a victory shy of qualifying for the state tournament as it fell to 10-11. Matt Skoczylas drove in two runs with a single and a ground ball.

Old Bridge 10, Middlesex 0 — The 21st-seeded Blue Jays managed only four singles against Old Bridge's Anthony Angarano and were knocked from the tourney in the second round May 12 in a six-inning game, falling to 7-11 in the process.

Metuchen 3, East Brunswick Vo-Tech 2 — Kevin Rush fanned 16 and tossed a three-hitter as Metuchen edged 27th-rated East Brunswick Vo-Tech in the first round May 10. Jack Rems and Cory Preston both collected a triple and a single and Chris Callas added a triple for the Bulldogs.

Middlesex 4, North Brunswick 2 — Matt Campanella singled in the tying run and Dennis Rivera followed with a two-run homer to lift the Blue Jays past 28th-seeded North Brunswick (0-16) in the opening round May 10. Campanella (5 innings, 6 strikeouts) and Rob Tolomeo combined on a two-hitter and 10 strikeouts.

Perth Amboy 10, Dunellen 5 — Matt Grasso keyed a four-run first inning with a three-run homer and Mike Bartolotti later hit a solo shot for a 5-1 edge but the 25th-ranked Destroyers could not hold the lead in bowing to 24th-seeded Perth Amboy May 10 in first-round action.



Pats win with two in 8th

Scoring both their runs in the eighth inning Tuesday night, the Somerset Patriots turned the superb pitching of Derek Lee and Dave Elder into a victory as they nipped Bridgeport 2-1 in Atlantic League of Professional Baseball action.

With 4060 fans looking on at Bridgewater's Commerce Bank Park, the Bluefish (12-7) broke up a scoreless duel in the seventh when Jamie Gann belted his second home run of the season before the Patriots (9-10) came back an inning later to snap a two-game skid.

Ryan Radmanovich, who had three of Somerset's seven hits for the night, began the uprising with a one-out single off reliever Terry Rosengren and raced home on a double by designated hitter Tony Gsell, the former Immaculata High standout. Gsell later came in on third baseman George Sandle's fly ball for a 2-1 cushion.

Lee went the first seven innings, yielding four hits and two walks while striking out nine. Elder, who's been the league's most dominant reliever thus far, came in for the last two stanzas, allowing no hits and one walk while fanning four to earn his second triumph. Pats' catcher Ryan Kellner went 2 for 2, including a double.

Bridgeport 14, Patriots 5 — The Blues jumped all over starter Scott Sobkowiak for six first-inning runs Monday night en route to victory in front of 3374 fans at Commerce Bank Park.

Sobkowiak (1-1) gave up five hits — including a grand slam to Brady Williams — and seven runs in three innings before being replaced by Phil Akens.

The Pats did come back with five runs in the fourth, cutting their deficit to 7-5, as Gsell ripped his third homer of the year, a three-run shot, Kevin Nicholson doubled in another run and Todd Betts rapped an RBI single.

But the Blues, who totaled 17 hits, got a run back in the sixth, another in the eighth and five in the ninth. Radmanovich went 2 for 4.

AC 6, Patriots 2 — Brett Jodie had another rough outing on the mound for the Patriots, giving up six earned runs in three-plus innings during Sunday's loss to Atlantic City (8-6) in front of 1772 fans at Sandcastle Stadium.

Jodie (1-3) permitted seven hits, including successive home runs by Dario Delgado and Michael Rivera in the third for a 5-2 lead.

Radmanovich had two of the Pats' five hits and Jeff Nettles led off the second inning with his second home run of the season.

Stevens garners first seed for GMCT softball

J.P. Stevens High was awarded the top seed in the Greater Middlesex Conference Softball Tournament, which started Wednesday, while area squads Middlesex (fifth) and South Plainfield (sixth) also had byes into today's second round by virtue of top seven seeds.

With a 17-2-1 mark at the start of the week and the unbeaten Red Division champion, Stevens will face the winner of the No. 16 Monroe/No. 17 Sayreville contest when today's eight games are played Saturday at South Plainfield.

Middlesex, which fell to 15-2 with a loss to North Brunswick Monday, will open against either 12-ranked Edison or 21st-seeded Piscataway, while South Plainfield will get the survivor of the game between 22nd-rated Cardinal McCarrick and 11th-ranked Dunellen.

The tournament quarter-finals will be held Wednesday at South Plainfield with double-headers at 3 and 5 p.m., while the semifinals are set for 11 a.m. and 1 p.m. Sunday, May 29, again at South Plainfield. The championship game is set for 11 a.m. Memorial Day, May 30 at Middlesex County College.

South Plainfield 4, Old Bridge 0 — Jessica Senz tossed a four-hitter and the Tigers broke open a scoreless duel in the fifth inning when Charlie Kazimir belted a two-run homer and Dorothy Cameron hit a solo shot as South Plainfield improved to 18-4 on the season with its eighth straight victory in a GMC crossover matchup against Old Bridge (11-11) Monday.

North Brunswick 3, Middlesex 0 — Erica Lordi allowed just three hits, struck out 10 and walked none but it wasn't enough to beat North Brunswick (7-10) in GMC inter-divisional play Monday. Meghan Reilly and Danielle Veilleux had two hits apiece for the Blue Jays with Veilleux stroking a triple.

South Plainfield 2, John F. Kennedy 1 — Jessica Miller doubled and scored on a squeeze bunt by

Caitlin English in the seventh inning to force extra innings and Dorothy Cameron, who had thrown out two runners at the plate from center field, singled and later scored on Stephanie Falzarano's single as the Tigers nipped Kennedy in 10 innings Saturday.

Mother Seton 4, Dunellen 1 — With an opportunity to capture the Gold Division title outright the Destroyers had to settle for a three-way tie with Mother Seton and South Amboy when they lost Saturday. Dunellen, which fell to 13-6, out-hit Mother Seton (15-3) 5-2, but Cassie Shotwell surrendered a three-run double in the sixth.

South Plainfield 5, Somerville 0 — Jessica Senz fired a two-hitter, fanning nine and walking none, while Melissa Szeliga (triple, double), Lacey Santone (double) and Caitlin English sparked a 10-hit attack as the Tigers handled Somerville (12-5) in a non-league clash May 13.

J.P. Stevens 0, Caldwell 0 — Hooking up with the state's all-time winningest pitcher May 12 the Hawks' Becky Garibotto matched pitch for pitch with Caldwell's Christine Schindler as the teams battled to a scoreless deadlock in 17-inning clash. Garibotto finished with a five-hitter and Schindler allowed three, while neither hurler walked anyone.

Middlesex 7, Old Bridge 0 — Erica Lordi tossed a four-hitter with nine strikeouts and no walks and drove in a pair of runs with two hits as Middlesex spanked Old Bridge in a GMC crossover test May 13. Adie Capozzalo sparked the offense with a 3-for-4 showing that including a double and two runs scored.

South Brunswick 6, Edison 3 — Rachel Rush's two-run triple to highlight a three-run first inning but the Eagles failed to score again as South Brunswick (11-6) rallied for a Red Division triumph May 12. Krissy Lacik had a pair of hits for Edison, which slipped to 12-10).

BASEBALL

Anthony Montalbano delivered a two-run double and Mike Chupka singled home the winning run as J.P. Stevens came from 7-5 down to edge Colonia (13-10) 8-7 in the bottom of the 12th inning in a GMC crossover game Monday to improve to 12-10 on the year.

Gary Turner helped stake the Hawks to a 5-1 lead with a pair of hits and four RBI, while James Zinno finished with two doubles and a single. Colonia tied the game with two runs in the seventh and went up by a pair in the 12th before Stevens answered.

South Plainfield 5, Perth Amboy 3 — Trailing 3-1 the Tigers scored four times in the top of the sixth to rally past Perth Amboy (3-18) in a GMC crossover game Monday. Nick Cesare drove in two runs with a triple and a single, while Bill Merkler doubled twice and had one RBI to help South Plainfield improve to 17-5.

Bound Brook 23, St. Peter's 15 — Jimmy Pemberton led a 24-hit attack with a 4-for-5 performance that included a triple and two RBI as the Crusaders out-slugged St. Peter's Monday in a non-league game to improve to 9-8 on the year. John Ibarra, who had a double, scored four times and drove in three for Bound Brook, which iced the game with a seven-run seventh.

Sayreville 5, Edison 3 — In their final tuneup before beginning GMC Tournament play the Eagles (12-9) could not overcome an early 3-0 deficit and fell to co-White Division champion Sayreville (12-7) in a crossover game May 12. Nick Reider had a triple and Mark Greder had a double among Edison's five hits.

GOLF

Metuchen's David Kolter cared a 10-over par 81 for the layout at Quail Brook to gain a share of fifth place in the Central-South Jersey Group I championships Monday and earn a spot in the Tournament of Championships. Kolter, who led the Bulldogs to a tie for fourth with a 389, is the only area golfer to advance.

'The best thing to do is pick up and go'

Editor's note: This article is third part of a continuing series that will look closely at how a family picks up the pieces, rebuilds and goes on with their life in the aftermath of a fire that destroyed their home.

By AMY S. BOBROWSKI
Staff Writer

GREEN BROOK — Fawnda Genovese-Garcia and Felix Garcia love their work, even though each has to wake up before 6 a.m. every day and travel nearly an hour to work and back.

Fawnda teaches math to sixth graders at Ann Street School in Newark, while Felix is a bi-lingual teacher at George Washington Elementary School



in Elizabeth.

But when a fire ruined Fawnda and Felix's Williamsburg Colonial saltbox style house in Green Brook on March 26, the two knew they wouldn't make it into work that Monday.

"At first you're just so devastated, you can't even think about anything else," said Fawnda. "Teaching is a very specialized job. You can't go in there being sad every day.

You're mentally just stuck in that moment."

For the couple, things got worse before they got better. Fawnda and Felix, only married for three months, spent nearly two weeks in a Howard Johnson motel room. They waited almost a month before finally receiving word that a settlement had been reached with their homeowners' insurance company.

Fawnda compared the fire to a death.

"You know eventually you have to move on, but you're mentally stuck in mourning," she noted. "I had to force myself to go out and buy clothes. I would go to the house and just sit in the driveway and cry."

Dr. Henry Odunlami, medical director of in-patient services at Somerset Medical Center said if the damage is extensive, a fire can very much be like a death.

"If the person has experienced a lot of trauma and has a history of stressful events, it's going to be a lot worse than someone who has no history of these events," he said. "If they are rich and didn't lose a lot, it's not going to be a stressful as it would be if they whole house was damaged. In that case, it can be like a death."

Despite the heartache, the couple knew they had to achieve some degree of normalcy in their lives; Felix returned to work a week after the fire. Fawnda returned to school two weeks after the fire.

"The wonderful thing about teaching is that the co-workers and kids really care," said Fawnda, who noted that several families from their school communities sent gift cards and notes. Both schools took up a collection and presented the couple with about \$2,500.

Odunlami said that people involved in traumatic events, such as a fire, should not put their lives on hold.

"The best thing to do is pick up and go," he said. "Anything that reduces the amount of stress is good. If work is a good place then it will be a positive thing."

But it wasn't all smiles and gifts when Fawnda went back to her school.

"It was really tough," said Fawnda. "People come up to you and say they're sorry and ask you questions. It's like living through it again when you talk about it."

She was also surprised by her students' reaction.

"The first morning, the kids all stare at you, but within one hour, they were back to being kids," she said.

Odunlami noted that while talking about the stressful event is a good thing, going into detail might trigger more trauma.

"If you talk about it, talk in a safe situation, like therapy. The therapy doesn't have to be with a professional. It can be with a priest, a close friend or family," he said. "But when people come up to you and ask questions, be general. People are just being nice."

For Felix, going back to work was a chance to get his mind off the fire.

"It was so much better to come back and to work with the kids," he said. "I was very stressed. Being back is good. I missed the school."

The good mood he gets from working with children stays with him for the entire day. Although both he and his wife feel cooped up in the small, two-bedroom apartment they'll call home until their new house is built, Felix said,

"We're alive. We have each other. We'll make the best of it."

The completely furnished, two-bedroom, two-bathroom apartment is slowly coming to reflect Felix and Fawnda's personalities. They've purchased their own bright green bathroom mats, brought home their cat, have several framed pictures of their families on a living room dresser (since all their own pictures burned, family members sent them duplicates) and have plush pillows and throw covers on the sofa just waiting for someone to snuggle in.

"My co-teacher sent me those," said Fawnda of the pillows and throws. "She said, 'Fawnda, I know you. You need pillows and a throw to wrap yourself up in.'"

Even though this apartment can never be like their home — which is now scorched and ruined from the fire, smoke and water damage — the couple is grateful to be out of the motel room.

"I can finally cook instead of going out all of the time," said Fawnda, who before teaching math was a home economics instructor.

Besides going back to work, the couple has also returned to participating in some of the activities they enjoyed before the fire. Three weeks ago they attended an art exhibit of a friend where they purchased a beautiful purple and teal vase to replace one damaged in the fire. Fawnda has returned to her bi-weekly aerobics class and the couple even signed up for a dance class.

They have other things to look forward to, like building a new house. Two weeks ago the insurance company finally reached a settlement, and will pay for total replacement of the house

and the entire contents.

"I was surprised, but relieved. After hearing that, it was the first day I went to school with a smile on my face," said Fawnda, who's already planning the layout of the new house in her mind.

But receiving a settlement doesn't mean the end of worry for the couple.

Odunlami said rebuilding the house can be a time of heightened stress for the couple. Since they weren't present during the fire "all they have now is a sense of loss," he said. Seeing the house demolished in order to rebuild is sure to bring a mix of feelings to the couple.

With the money from the insurance company, Fawnda and Felix will have the money to purchase the items they lost to the fire, but they know they can never replace things of sentimental value.

Fawnda was glad to have found a few things unharmed.

"I said to myself, if I can have nothing else I want these," she said referring to her children's first books, which contain child-like crayoned words and pictures on the pages. "These are what they first learned to read."

But she knows she won't be so lucky as to find everything of meaning.

"Fire is the worst thief. My mother told that to me," said Fawnda. "A thief can never take everything, but a fire can."

In Part IV, appearing in next week's edition of The Reporter, Fawnda and Felix rummage through the house trying to save as much as possible before it is leveled and relate their experiences with the insurance company and public adjuster.



Rutgers Community Music Program

Private and Group Music Instruction for all ages and levels by a faculty of professional and active musicians

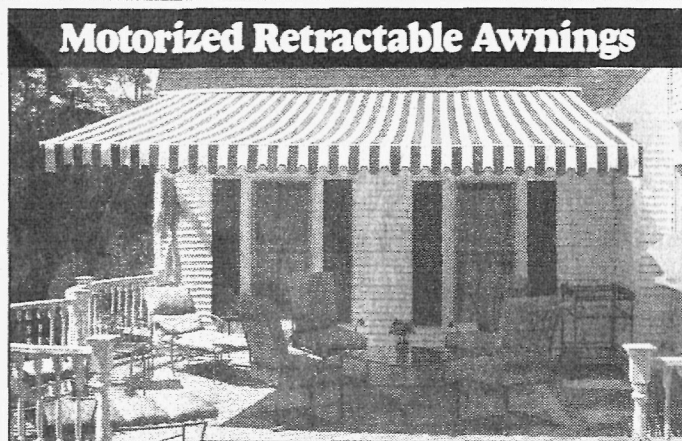
- ◆ Music lessons on all instruments and voice and Kindermusik for newborns to age 7
- ◆ Call about our Summer Camps for grades 7-12
- ◆ Jazz Combo Workshop July 18-23
- ◆ Opera Workshop July 25-30 (Grades 9-12 only)
- ◆ Woodwind Workshop August 1-6

Ask about our free Kindermusik demo

Call for a brochure 732-932-8618

125 Hamilton Street, New Brunswick, College Ave. Campus

THE STATE UNIVERSITY OF NEW JERSEY
RUTGERS



Cool Your Deck Or Patio With A Touch Of A Button!

Present This Ad For A
FREE MOTOR
With The Purchase Of A Retractable Deck Or Patio Awning
Retail Value Up To \$500!
Ask for details. Coupons cannot be combined. Expires May 31, 2005

- Create Additional Outdoor Living Space
- Reduce Air Conditioning Cost By Up To 25%
- Block Up To 98% Of Harmful UV Rays
- Protect Furniture, Drapes And Carpet From Fading

Residential • Commercial

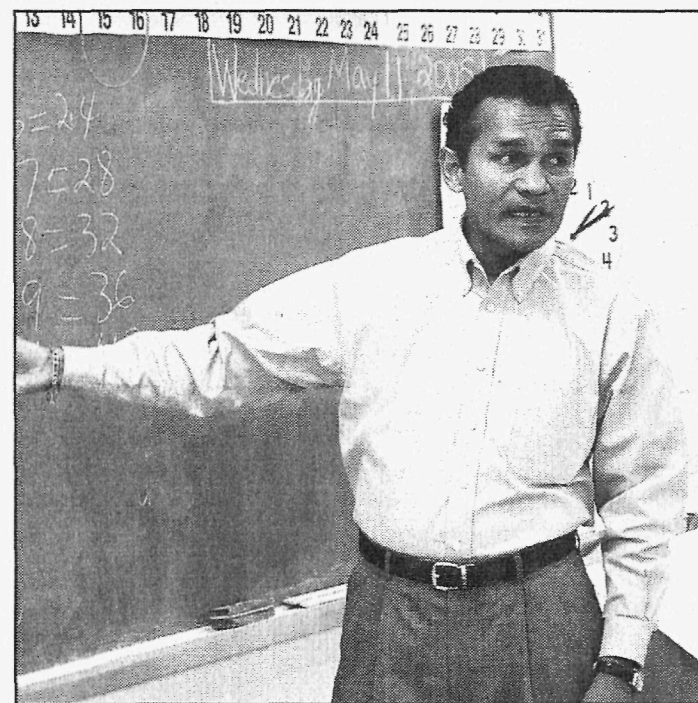
MAJESTIC AWNING, INC.

SOMFY

New Showroom Open Now!

sunbrella

FREE ESTIMATE: 1-866-8-AWNING
www.majesticawning.com • 1-866-8-2-9-6-4-6-4



One week after a fire wrecked the house he lived in with his new wife, Felix Garcia returned to teaching in Elizabeth, at left. He and his wife, Fawnda Genovese-Garcia, at right, have begun to put the pieces of their lives back together, living in an apartment until they are ready to rebuild their Green Brook home.

GEORGE PACCIOLLO/
STAFF PHOTOGRAPHER



Legal Notices

NOTICE OF SALE OF PROPERTY FOR NON-PAYMENT OF TAXES, ASSESSMENTS AND/OR OTHER MUNICIPAL LIENS

Public notice is hereby given that I, Tonya Hutocsky, Collector of Taxes of the Borough of Middlesex, in the County of Middlesex, will sell as public auction on June 7, 2005, at the Borough Hall, 1200 Mountain Avenue, Middlesex, New Jersey, at 10:00 a.m. or at such time and place to which said sale may then be adjourned, all of the several lots and parcels of land assessed to the respective persons whose names are set opposite each respective parcel as the owner hereof for the total amount of municipal liens chargeable against said lands respectively, in accordance with N.J.S.A. 54:5-1, et seq., as computed to the 7th day of June 2005. Industrial properties may be subject to spill compensation and control act (N.J.S.A. 58:10A-1 et seq.) and the industrial site recovery act (N.J.S.A. 13K-6 et seq.). Take further notice that the hereinbefore described lands will be sold for the amount of the municipal liens chargeable against each parcel of said land assessed as one parcel, together with interest and costs to the date of the sale. Said lands will be sold at the lowest rate of interest bid, not to exceed 18%. Payment for said parcels shall be made prior to the conclusion of the sale in the form of cash, certified check, money order, or prearranged wire transfer, or parcels will be resold. Properties for which there are no other purchasers shall be struck off and sold to the Borough of Middlesex at an interest rate of 18%. In addition, the municipality is precluded from issuing a tax sale certificate to any prospective purchaser who is or may be in any way connected to the prior owner or operator of the site.

At any time before the sale I will accept payment of the amount due on any property with interest and costs. Payment must be in the form of cash, certified check or money order.

The lands to be sold are described in accordance with the last tax duplicate as follows:

BLOCK	LOT	NAME	ADDRESS	TYPE	AMOUNT
25	5.6	Hoette, Ted V	98 Conover Pl	Tax	1945.86
40	31,32-34	Pollarak, Rudi J & M Pollarak	351 High Street	Tax	6277.11
55	20,21	Hawynio, John S Jr	1229 Bound Brook Rd	Tax	4549.78
88	6.01/C002A	G P Realty Inc	495 Union Ave	Tax	4024.99
86	6.01/C002B	G P Realty Inc	495 Union Ave	Tax	4024.99
100	5	Kravitz, A & S	405 Beechwood Ave	Tax	5011.26
129	1	Physique LLC % Joseph Martinelli	Lincoln Blvd	Tax	675.83
150	67-69	Brach-McClash, Teri	635 Ashland Rd	Tax	4377.65
153	24	Pittman, Janet M & Gloria	291 Lincoln Blvd	Tax	3547.99
244	5	Whitcomb, Howard J & Deborah L	606 Denton Place	Tax	3885.84
245	10,11	Chionis, Thelma G	189 So Lincoln Ave	Tax	3123.30
254	1,1A	Benson, Glenn T	500 Bound Brook Rd	Tax	7151.16
258	11,12-13	Ellery, Maryanne	328 Runyon Ave	Tax	4323.83
259	2	Embroidery Concept & Design Inc	201 Pond Ave	Sewer	355.25
259	2	Waterside LLC	201 Pond Ave	Tax	18163.53
266	2	Ronitz, Anna	88 Hanover Sq	Tax	890.48
267	2	Union Foundry Co Inc % A Kadish	750 South Ave	Tax	2875.12
270	3,4	Artistic Architectural Sculpture	Wilton Ave	Tax	851.15
270	5,6-8	Artistic Architectural Sculpture	Wilton Ave	Tax	2636.67
270	9, 10-12	Artistic Architectural Sculpture	201 Wilton Ave	Tax	20408.15
271	1,2	Artistic Architectural Sculpture	Wilton Ave	Tax	851.15
271	3,4	Artistic Architectural Sculpture	Wilton Ave	Tax	851.15
271	7,8	Artistic Architectural Sculpture	Wilton Ave	Tax	1276.74
271	9,10-15	Artistic Architectural Sculpture	Michell St	Tax	2284.32
271	16, 17-22	Artistic Architectural Sculpture	Wilton Ave	Tax	1276.74
282	20,27	Census, Samuel L & Mary Ann	751 Drake Ave	Tax	4645.04
290	12,10,42-46	K & L Corporation % Test Fabrics Inc	200 Blackford Ave	Sewer	7004.81
295	51,52-54	Disceenza Enterprises LLC	421 Lincoln Blvd	Tax	5352.54
304	20,21	Belis, Ronald J & Elizabeth C	659 Lorraine Ave	Tax	1152.46
309	28,29	Bell, William N & Ann E	701 Mountain Ave	Tax	2720.77
312	4,5	Short, Allan D	607 Voorhees Ave	Tax	47.66
348	1	Physique LLC % Joseph Martinelli	150 Lincoln Blvd	Tax	1525.47
348	7	Physique LLC % Joseph Martinelli	CPR NJ	Tax	624.35
348	3	Physique LLC % Joseph Martinelli	Lincoln Blvd	Tax	435.14
349	10A	Sub-Joe, Inc	232 Lincoln Blvd	Tax	5241.18
352	1,2	Bakeland, Inc	84 Bakeland Ave	Tax	44032.83
352	1,3	B & H Metal	84 Bakeland Ave	Sewer	411.48

SUMMARY OF SYNOPSIS OF 2004 AUDIT REPORT OF THE BOROUGH OF DUNELLEN, MIDDLESEX COUNTY, NEW JERSEY AS REQUIRED BY N.J.S.A. 40A:5-7

COMBINED COMPARATIVE BALANCE SHEET

ASSETS	BALANCE JUNE 30, 2004	BALANCE JUNE 30, 2003
Cash and Investments	\$2,804,747.39	\$2,530,828.79
Accounts Receivable:		
State and Federal Grants	2,821,499.00	2,959,015.65
Due from State of N.J.	48,855.28	52,072.74
Taxes, Assmts, and Liens		
Interfund Loans	1,946,721.88	1,524,849.90
Delinquent Property Tax Receivable	80,141.58	11,880.35
Other Accounts Receivable	144,061.66	142,830.66
Deferred Charges to Revenue of Succeeding Years	27,750.15	
Deferred Charges to Future Taxation: General Capital	3,686,782.02	3,647,677.60
Total Assets	\$11,480,419.61	\$10,869,035.69
LIABILITIES, RESERVES AND FUND BALANCE		
Bonds and Notes Payable	\$2,785,606.42	\$2,774,475.00
Lease Payable	50,279.00	100,556.00
Prepaid Taxes		
Tax and Other Overpayments	475,493.04	686,277.24
Appropriation Reserves		
Reserve for Encumbrances	60,141.58	120,467.81
Amounts Pledged to Specific Purposes	287,954.59	1,243,951.77
Developers Deposits and Escrow Funds		
Improvement Authorizations	4,647,181.01	3,000,458.00
Interfund Loans	1,946,721.88	1,524,849.90
Other Liabilities	34,595.39	70,418.03
Reserve for Certain Assets Receivable	254,064.90	431,145.30
Fund Balance	948,402.02	916,635.64
Total Liabilities, Reserves		

COMPARATIVE STATEMENT OF OPERATIONS AND CHANGE IN FUND BALANCE - CURRENT FUND

	SFY 2004	%	SFY 2003	%
Revenue and Other Income Realized				
Fund Balance Utilized	\$768,000.00	5.54	\$665,000.00	4.94
Miscellaneous - From Other Than Local Property Tax Levies	1,788,782.47	12.90	1,983,676.31	14.74
Collection of Delinquent Taxes and Tax Title Liens	11,860.35	0.09	40,030.57	0.30
Collection of Current Tax Levy	11,046,187.59	79.66	10,508,270.73	78.06
Non-Budget Revenue	19,848.17	0.14	7,475.18	0.06
Other Credits	231,448.80	1.72	257,107.52	1.91
Total Income	13,866,107.38	100.00	13,461,560.31	100.01
Expenditures				
Budget Expenditures: Municipal Purposes	4,863,743.61	37.22	4,791,913.07	37.77
County Taxes	1,510,869.32	11.56	1,457,577.70	11.49
Due County for Added & Omitted Taxes	2,727.96	0.02	1,809.39	0.01
Local School Taxes	6,886,440.00	51.17	6,288,149.00	49.56
Other Expenditures	2,950.11	0.02	148,854.19	1.17
Total Expenditures	13,056,341.00	100.00	12,668,303.35	100.00
Excess (Deficit) in Revenue	799,766.38		773,256.96	
Adj. To Income Before Fund Balance: Expend. Included Above Which are by Statute Deferred Charges to Budget of Succeeding Years	10,000.00			
Statutory Excess to Fund Balance	809,766.38		773,256.96	
Fund Balance - Beginning	898,434.55		790,177.59	
Less: Utilized as Anticipated Revenue	788,000.00		665,000.00	
Fund Balance - Ending	\$940,200.93		\$898,434.55	

RECOMMENDATIONS

- We recommend the following:
- That the minutes of every meeting of the Borough Council be bound as a permanent record.
 - That the Borough establish oversight of the Developer's escrow account activity within the treasurer/finance office function.
 - That all surety bonds be available for audit review.
 - That all officials handling municipal funds deposit or remit all receipts within 48 hours of receipt in compliance with N.J.S.A. 40A:5-15; that officials issue duplicate receipt forms for all fees collected; that monthly financial reports be prepared; and that officials record in their books of original entry all monies collected.
 - That the Borough review its procedures regarding the maintenance of the detail of payroll deductions payable.
 - That the Borough establish a Fixed Asset Accounting System.

The above summary or synopsis was prepared from the Report of Audit of the Borough of Dunellen, Middlesex County, New Jersey for the fiscal year 2004. The financial data included in the summary or synopsis is presented in the form prescribed by the Local Finance Board, Department of Community Affairs, State of New Jersey. Readers are cautioned that the summary or synopsis was prepared solely for the purpose of compliance with the public disclosure provisions of N.J.S.A. 40A:5-7, and accordingly, the summary or synopsis should not be relied upon for any other purpose. The Report of Audit, submitted by Andrew G. Hudzik, Registered Municipal Accountant, is on file at the Borough Clerk's office and may be inspected by any interested person.

William Robins
Borough Clerk
\$98.40

B107.1T.5/21/05

Borough of Middlesex Board of Health NOTICE OF FINAL PASSAGE OF ORDINANCE NO. 131-BH

AN ORDINANCE TO AMEND CHAPTER 4, ENTITLED, LICENSES AND PERMITS. The ordinance was read and considered for final passage and passed on the second reading at a public meeting of the Board of Health, Borough of Middlesex, in the County of Middlesex, State of New Jersey, held on May 3, 2005 at the Middlesex Public Library.

Attest:
Genevieve Ross

Secretary
May 3, 2005
\$8.80

BOROUGH OF BOUND BROOK PLANNING BOARD

The Bound Brook Planning Board approved an application (#23-04) International Check Cashing Service, LLC (also referred to as Ocailis Ramirez and Barnett), with respect to property located at 337 Telemage Avenue (Lot 18, Block 19). The property is located in the BR (business residential) zone. The relief sought was a site plan for change of occupant and change of use of store front from barber shop to check cashing. The application was approved as to substance on March 10, 2005 and approved as to form on May 12, 2005.

The Bound Brook Planning Board approved an application (#23-04) International Check Cashing Service, LLC (also referred to as Ocailis Ramirez and Barnett), with respect to property located at 337 Telemage Avenue (Lot 18, Block 19). The property is located in the BR (business residential) zone. The relief sought was a site plan for change of occupant and change of use of store front from barber shop to check cashing. The application was approved as to substance on March 10, 2005 and approved as to form on May 12, 2005.

B108.1T.5/21/05

PLACE YOUR AD 24 HOURS A DAY, 7 DAYS A WEEK AT:

800.559.9495



Count on us Classifieds

Somerset County

From across the street to across the state, The Reporter & nj.com has what you're looking for!

We're powered by New Jersey's largest web site for local news & information - nj.com!



Everything Jersey

www.nj.com/placead



Auto Classification 1385

Employment Classification 201

Merchandise Classification 550

Classified In-column deadline: Monday at 5 p.m.

Memorial Day Publishing Deadlines

Somerset Reporter

NJN In-column Classified Fri., May 27 at 5pm
NJN Classified Display Thurs., May 26 at 5pm

Announcements

Adoption 105

ADOPT: Loving Family wishes to adopt newborn. We offer a nurturing home filled with joy and happiness. Expenses paid. Contact Nancy/Doug, 1-800-484-1292, Pin 1212

Announcements 110

Disclaimer: The Reporter, Messenger-Gazette & The Chronicle reserves the right to edit, reclassify or reject any classified advertising at any time and will not be responsible for errors after the first day of publication. The Reporter, Messenger-Gazette & The Chronicle liability shall be limited to an adjustment for the cost of the space occupied by the error and will not be liable for failure to publish an ad.

Notices 115

BUY NEW JERSEY FOR \$399 The New Jersey Press Association can place your 25 word classified ad in over 150 NJ newspapers throughout the state combined circulation of over 2 million households. Call Diane Trent at NPA at 609-409-0300 ext. 24, email drent@njpa.org or visit www.njpa.org for more information. (Nationwide placement available)

Notices 115

BUY NEW JERSEY FOR \$399 The New Jersey Press Association can place your 25 word classified ad in over 150 NJ newspapers throughout the state combined circulation of over 2 million households. Call Diane Trent at NPA at 609-409-0300 ext. 24, email drent@njpa.org or visit www.njpa.org for more information. (Nationwide placement available)

Each week hundred of Public Notices are published in New Jersey's daily and weekly newspapers! The New Jersey Press Association has created a Internet database where these notices are posted, njpublicnotices.com.

You have access 24 hours a day, 7 days a week, to statewide sheriff sales, foreclosures, RFP, bids for schools, town meetings, variances, plus many other types. Search for notices manually or subscribe to Smart Search and have notices sent to your email address automatically. Go to: www.njpublicnotices.com for more information and to subscribe.

Notices 115

REACH OVER 1.5 MILLION HOUSEHOLDS! The New Jersey Press Association can place your 25 word classified ad in over 150 NJ newspapers throughout the state combined circulation of over 2 million households. Call Diane Trent at NPA at 609-409-0300 ext. 24, email drent@njpa.org or visit www.njpa.org for more information. (Nationwide placement available)

Notices 115

REACH OVER 1.5 MILLION HOUSEHOLDS! The New Jersey Press Association can place your 25 word classified ad in over 150 NJ newspapers throughout the state combined circulation of over 2 million households. Call Diane Trent at NPA at 609-409-0300 ext. 24, email drent@njpa.org or visit www.njpa.org for more information. (Nationwide placement available)

Notices 115

REACH OVER 1.5 MILLION HOUSEHOLDS! The New Jersey Press Association can place your 25 word classified ad in over 150 NJ newspapers throughout the state combined circulation of over 2 million households. Call Diane Trent at NPA at 609-409-0300 ext. 24, email drent@njpa.org or visit www.njpa.org for more information. (Nationwide placement available)

Notices 115

REACH OVER 1.5 MILLION HOUSEHOLDS! The New Jersey Press Association can place your 25 word classified ad in over 150 NJ newspapers throughout the state combined circulation of over 2 million households. Call Diane Trent at NPA at 609-409-0300 ext. 24, email drent@njpa.org or visit www.njpa.org for more information. (Nationwide placement available)

Notices 115

REACH OVER 1.5 MILLION HOUSEHOLDS! The New Jersey Press Association can place your 25 word classified ad in over 150 NJ newspapers throughout the state combined circulation of over 2 million households. Call Diane Trent at NPA at 609-409-0300 ext. 24, email drent@njpa.org or visit www.njpa.org for more information. (Nationwide placement available)

Notices 115

REACH OVER 1.5 MILLION HOUSEHOLDS! The New Jersey Press Association can place your 25 word classified ad in over 150 NJ newspapers throughout the state combined circulation of over 2 million households. Call Diane Trent at NPA at 609-409-0300 ext. 24, email drent@njpa.org or visit www.njpa.org for more information. (Nationwide placement available)

Employment

Education 201

THE PRINCETON REVIEW IS LOOKING FOR BRIGHT, ENTHUSIASTIC PEOPLE TO TEACH SAT, GMAT, MCAT, LSAT COURSES. Flexible, part-time schedules. No experience necessary. \$18-23/hr. Apply online at www.princetonreview.com/employment. Questions? Call (609) 683-0082

Child Care 202

Do you love working with children? Then Kiddie Academy is the place for you. Infant Program Call The Lebanon location at 908-236-0226

Employment Agencies

205

Immediate Job Openings! STAFFING ALTERNATIVES Call 732-246-1687

Drivers 230

COVEANT TRANSPORT. Regional Runs Available. Home Weekly. Excellent Pay & Benefits. Experienced Drivers. O/O & Students Welcome. Equal Opportunity Employer. 888-MOREPAY (888-667-3729)

Drivers

COVEANT TRANSPORT. Regional Runs Available. Home Weekly. Excellent Pay & Benefits. Experienced Drivers. O/O & Students Welcome. Equal Opportunity Employer. 888-MOREPAY (888-667-3729)

Drivers

COVEANT TRANSPORT. Regional Runs Available. Home Weekly. Excellent Pay & Benefits. Experienced Drivers. O/O & Students Welcome. Equal Opportunity Employer. 888-MOREPAY (888-667-3729)

Employment

Education 201

THE PRINCETON REVIEW IS LOOKING FOR BRIGHT, ENTHUSIASTIC PEOPLE TO TEACH SAT, GMAT, MCAT, LSAT COURSES. Flexible, part-time schedules. No experience necessary. \$18-23/hr. Apply online at www.princetonreview.com/employment. Questions? Call (609) 683-0082

Teachers/Assistants

Part Time

A leader in early childhood care and education has immediate openings for teaching positions available at our Summit school locations. 3pm-7pm, Mon-Fri. No certification needed. Training provided.

Interested candidates

please call (908) 273-7040 x204 or Fax Resume 908-277-0559

Employment

Education 201

THE PRINCETON REVIEW IS LOOKING FOR BRIGHT, ENTHUSIASTIC PEOPLE TO TEACH SAT, GMAT, MCAT, LSAT COURSES. Flexible, part-time schedules. No experience necessary. \$18-23/hr. Apply online at www.princetonreview.com/employment. Questions? Call (609) 683-0082

Employment

Drivers 230

DRIVER Wanted now. CDL preferred, but not necessary. Dependable with solid work ethic. Call 908-782-8595

Truck Drivers

Drivers: 40cpm to start? you got it! With only three months experience, you can land America's best driving job - start at whopping 40 cpm! And with more experience you qualify for a higher starting wage: 41 cpm for 1-3 experience, 42 cpm for 3 years or more! In addition to top mileage pay, we offer monthly bonuses, paid vacations, and a "create-your-own" benefits package that allows you to select the benefits you value most: medical, dental, vision, 401K are just a few of our most popular offerings. And with our flexible time-off programs, you can choose a schedule to fit your lifestyle. You can even take your assigned truck home with you in most locations. Plus with J.B. Hunt, the miles will be there; we have an immense share of America's freight to keep you moving! This premium OTR position is only available in select states; call now to learn more or apply by phone: 1-800-252-4868, EOE. Subject to d/s, 3 mos. exp. req.

General Help 240

AMERICA'S AIR FORCE

Jobs available in over 150 careers, plus:

- * Enlistment Bonuses for certain careers
- * Up to \$10,000 Student Loan Repayment
- * Up to 100% Tuition assistance
- * High Tech training

High school grads age 17-27 call 1-800-423-USA or visit AIRFORCE.COM

U.S. AIR FORCE CROSS INTO THE BLUE

BOROUGH OF SOMERVILLE

"POSITION AVAILABLE"

LICENSED CONSTRUCTION OFFICIAL

Part-Time position without benefits, approximately 8-12 hrs/wk; Hours must be between 9:00am and 4:30 pm. Requirements: HS Graduate, valid NJ Driver's license, valid construction official license and HHS subcode license; Must have a minimum of five (5) years experience in a class 1 municipality; Must be willing to start June 8, 2005.

Candidates should submit to a Police Background check, pass a drug/alcohol screening test and a physical examination.

Submit Resumes to: Ralph D. Stenrod, Clerk/Administrator, Somerville Borough Hall, 25 West End Avenue, Somerville, NJ 08876

The Borough of Somerville is an Equal Opportunity Employer

TRUCK DRIVERS

Heard of Heartland's "GREEN MILE PROGRAM"? They're worth an unprecedented \$0.50 per mile for company drivers! Weekly Home! E2 Pass/ Toll Cards! Blue Cross/ Blue Shield! New equipment! Everything! HEARTLAND EXPRESS 1-866-282-5861. www.heartlandexpress.com

TRUCK DRIVERS

Heard of Heartland's "GREEN MILE PROGRAM"? They're worth an unprecedented \$0.50 per mile for company drivers! Weekly Home! E2 Pass/ Toll Cards! Blue Cross/ Blue Shield! New equipment! Everything! HEARTLAND EXPRESS 1-866-282-5861. www.heartlandexpress.com

General Help 240

ACCESS A NEW CAREER IN HEALTHCARE

Training in Massage Therapy, Medical Assistant, Medical Billing Coding, Surgical Technologist. The Chubb Institute! Call 1-888-966-7777.NOW!

ACCESS A NEW CAREER IN HEALTHCARE

Training in Massage Therapy, Medical Assistant, Medical Billing Coding, Surgical Technologist. The Chubb Institute! Call 1-888-966-7777.NOW!

General Help 240

ACCESS A NEW CAREER IN HEALTHCARE

Training in Massage Therapy, Medical Assistant, Medical Billing Coding, Surgical Technologist. The Chubb Institute! Call 1-888-966-7777.NOW!

General Help 240

ACCESS A NEW CAREER IN HEALTHCARE

Training in Massage Therapy, Medical Assistant, Medical Billing Coding, Surgical Technologist. The Chubb Institute! Call 1-888-966-7777.NOW!

General Help 240

ACCESS A NEW CAREER IN HEALTHCARE

Training in Massage Therapy, Medical Assistant, Medical Billing Coding, Surgical Technologist. The Chubb Institute! Call 1-888-966-7777.NOW!

General Help 240

ACCESS A NEW CAREER IN HEALTHCARE

Training in Massage Therapy, Medical Assistant, Medical Billing Coding, Surgical Technologist. The Chubb Institute! Call 1-888-966-7777.NOW!

General Help 240

ACCESS A NEW CAREER IN HEALTHCARE

Training in Massage Therapy, Medical Assistant, Medical Billing Coding, Surgical Technologist. The Chubb Institute! Call 1-888-966-7777.NOW!

General Help 240

ACCESS A NEW CAREER IN HEALTHCARE

Training in Massage Therapy, Medical Assistant, Medical Billing Coding, Surgical Technologist. The Chubb Institute! Call 1-888-966-7777.NOW!

General Help 240

COUNTER PERSON

FT/PT. Stanley Cleaners, Lambertville, Exp. pref. will train. 609-397-0343

Curves

FITNESS TECHS

Seeking pleasant, energetic people to join our Branchburg, Flemington & Whitehouse Curves team. Training provided for right candidate. Most shifts available. Some early morning, evening and/or some Saturdays required.

Call Karen: (908) 735-6151 For interview appt

General Help 240

JAMES TOYOTA

Has many positions available in the automotive field. Dealership is preparing for huge growth; opportunities for Technicians UP TO \$2,000 SIGN ON BONUS, and Service Receptionist available. Sign on bonus available for certain positions. Please call Chris Thom 908-788-6700 or fax resume to: 908-237-0544

General Help 240

LANDSCAPE FOREPERSON

L/S constr firm seeks ambitious & motivated indiv to lead & manage crew. On job daily, resp. for coordinating employees, equipment, materials, paperwork etc. Knowledge of design, installing walls, patios, grading & drainage, plants & walkways. Min 3 yrs foreperson exp. DL req'd. CDL a+. Competitive comp package based on exp. Call Ed 908-413-0874

General Help 240

GET PAID TO SHOP!

Eat out, Watch Movies and Evaluate. Local Stores, Restaurants, Theaters. Flexible hours. Training provided. Email required. 1-800-585-9024 ext. 6252

General Help 240

GLAZIER

Immediate opening for entry level position available at glass and mirror company located in Ne-shanic Station, NJ. Mechanically inclined candidate will be trained in all facets of commercial glazing. Excellent salary and benefits. Valid driver's license required. Call Scott at 908-782-0812.

General Help 240

GROOMER

FT/PT. For Mobile/shop. Benefits, vacation. Exp. req. Call Janet: 908-359-1959

General Help 240

Hair Stylist

Nail Tech & Assistant FT/PT professional and experienced. Bridgewater. 732-356-1311

General Help 240

KENNEL HELP

Reliable, DL required. Call Club Canine 908-735-7404

General Help 240

MANAGER

FT/PT Managerial position available. No exp. necessary. PLAZA CLEANERS Whitehouse Station 908-303-9037 or 201-264-6858

General Help 240

MOVIE EXTRAS, ACTORS, MODELS!

Make \$100 - \$300/day. No experience necessary. FT/PT. All looks needed! call 1-800-799-6151

General Help 240

RECEPTIONIST

Wild & Crazy Company Start now no experience 732-764-6868

General Help 240

ROOFER'S HELPER NEEDED

Full Time: Driver's License required, \$15/hr. Call 908-217-5859-Anytime

General Help 240

CUSTOMER & SALES SUPPORT

for Branchburg Distributor, to 25 hours weekly @ \$15.16/50/hr plus benefits. Degree, 2+ yrs. exp., excellent skills. Send resume & salary history to: Chris@topsales.com or Fax 908-707-8326

General Help 240

GIRL FRIDAY

Mom w/school aged children encouraged to apply. 10-2pm. Computer skills, typing, and filing \$20 per hr net. Call 908-719-9684

General Help 240

OFFICE HELP

in German, French, Spanish, Polish 908-526-1717

General Help 240

PART TIME DRIVERS

Needed for luxury sedans. No CDL required. Must have clean driving record. Daytime hours. Weekends available. 908-236-7422 for an interview.

General Help 240

PONY WALKER

To walk Ponies at children's parties. 908-371-1808

General Help 240

RECEPTIONIST

Looking for enthusiastic person in a busy Chiropractic Office. FT 4-7pm Mo-Fr. Computer skills a plus. 908-781-9600

General Help 240

FREE ADVICE. BE WARY OF ADS THAT PROMISE EASY \$\$\$

Yes! Absolutely free advice about fraudulent contests and get-rich quick schemes. Call 1-800-876-7060 today for free info.

General Help 240

PARTNERSHIP FOR CONSUMER EDUCATION

A public service message brought to you by this publication and the Federal Trade Commission

General Help 240

SALES

\$5,500 Weekly Goal Potential. If someone did it, so can you! 23 confirmed appointments daily! Benefits Available...Call Catherine McFarland 888-566-9144

General Help 240

SALES

Plastic pipe distributor in Branchburg seeks inside sales person with good customer relations skills. Proven knowledge preferred. Salary plus commission. Excellent benefits. Fax resume to: 908-534-1428

General Help 240

SALES

PT make your own hours, easy sale. 732-764-0542

General Help 240

SALES

PT make your own hours, easy sale. 732-764-0542

General Help 240

SALES

PT make your own hours, easy sale. 732-764-0542

General Help 240

SALES

PT make your own hours, easy sale. 732-764-0542

General Help 240

SALES

PT make your own hours, easy sale. 732-764-0542

General Help 240

SALES

PT make your own hours, easy sale. 732-764-0542

General Help 240

Sales Help 265 SALES RETAIL FI/PT. For swing set warehouse in Flemington & Bridgewater NJ. Experience a plus. Training provided. Fast paced work environment. Benefits. 1 week-end day required. Call Lisa in Flemington @ 888-788-4232 or Shannon in Bridgewater @ 732-868-0306 Classifieds Get Results!	Trades 275 CARPENTER & CARPENTER'S APPRENTICE We are looking for an individual willing to learn and grow with local company in all phases of residential remodeling. Reliability and work ethic essential. Valid drivers license necessary. Wage based upon skill level. Call 609-466-9717 or fax resume to 609-466-4381.	Trades 275 MASON/LABORER Must have own transportation. Good starting salary. 908-832-2076 Situations Wanted 280 HOUSEKEEPERS, NANNIES, COMPANIONS All nationalities/Lic. Bonded AURORA AGENCY 170 Morris Ave. L. Br. NJ 732-222-3369 WANTED Work From Home Data Entry, Law and Pharmaceutical Exp. 120 Words Per Minute. 732-805-9411	Situations Wanted 280 Senior Home Care by Angels Reliable caregivers provide up to 24 hr. non medical care in your home. Hygiene assistance, meal preparation, light housekeeping & companionship. Affordable rates. Top background checks. Call: Visiting Angels 1-888-495-3600 Legals on Line www.njpublicnotices.com Your online source for public notices in New Jersey	Real Estate Sales Acresage & Lots 305 ADIRONDACK RIVERFRONT SALE 16 Acres - Was \$34,900, NOW \$29,900. 468' water front, woods, great trout fishing! Ideal for cabin or year round home! Terms! Hurry! 800-260-2876. www.moosriverland.com FARM FORECLOSURE 22 Acres - \$49,900 Woods, views, stone walls, subdivided! Country setting! Survey, good title, owner terms avail! Call Now! 865-262-9608. www.upstateNYland.com	Real Estate Sales Acresage & Lots 305 FORGOTTEN FARM 14 acres - Maple woods, view \$29,900 25 acres - Tall Pines, Stream - \$44,900 7 acres - Old house, views - \$39,900 Superb hilltop setting overlooking a river valley! EDC access off I-90. Build camp, hunt or invest! Terms avail! Hurry! 877-860-5283. www.mohawkhighlands.com FRANKLIN TWP. WARREN CITY BUILDING LOT • Revised, soil logged, well permit. • 1.5 ac on country lane, part wooded/open • Upscale area. Homes resell \$600,000. • One of N.J.'s most beautiful valleys • Preserved farmland much of area • 1/2 mi Musconetcong R. (trout) • 1/4 mi babbling brook (spawn) • 1/4 mi State game lands • Fine Schools. \$295,000 by OWNER (908)537-4299	Homes For Sale 330 HIGH BRIDGE Affordable contemporary 4 BR, \$349,900, desirable Hunterdon neighborhood, 3/4BR, 1BA, EIK, deck, new appl., carpeting, CAC. Community pool. Move-in condition. Qualified buyers by appt. 908-638-8862 HOLLAND TWP Custom built contemporary home, 11.6 secluded, wooded acres w/Views. Low taxes. BR, 3 full baths, large kit, DR, LR w/woodstove, cathedral ceiling, fam rm w/woodstove, 3 decks, 3 car garage. Has potential, many extras. Must be seen to appreciate. \$699,900. 908-995-9619 OPEN HOUSE HOLLAND TWP SUN. 5/15 & 5/22 12PM-4PM It's bigger than it looks! 3 BR, 2 BA, BRICK CAPE on 1 acre. 2 car det. gar., bsmt, everything updated. Beautiful move in condition, must see! On Milford/Mt. Pleasant Rd. 7 min. to Rt. 78. \$384,900 by owner. 908-303-9825 LEI BEACH HAVEN TER. 4BR, 1.5BA, Cape, new roof/carp/win, gas fpl, bay beach, can email pictures \$625,000 908-832-9147 NAPLES, FLORIDA - Luxury Homes Live On Golf Course, Beach or Bay. Mid 200's to \$1,000,000. Call Sue Myhelic, Gulf Breeze RE. 239-216-6444.	Vacation Property For Sale 380 OCEAN FRONT PROPERTY 41 Spectacular 3+ acre lots overlooking Chincoteague and Assateague Islands on E. Shore of VA. 30 miles S of Ocean City, MD. Private paved roads, community pier, underground utilities, and on-site caretaker within 475 acres. Prices from \$130,000 - \$500,000. Prefer the Chesapeake Bay? 10 private waterfront lots on the Bay starting at \$350,000. Bay or Seaside, sun, sail, fish, clam on the water by day; dine in the quaint village restaurants by night. Call Amy @ (757) 709-9525 or e-mail: Amy@corbinhall.com Real Estate Rentals Apartments 405 ALPHA - 2 bedroom, quiet, washer/dryer, \$1100/mo. some utilities included. \$850. Call 908-310-2408 CLINTON GARDENS - Spacious 1 & 2 BR apts. DW, AC, patio, balcony, laundry, parking. Junction of 22 St & 78. Walk to town. 973-635-1163 or 908-735-2994 FLEMINGTON 1 BR APT. Kit, new, remodeled Victorian home, \$975 per mo. Short term, avail. 732-735-6645 FLEMINGTON - 2 BR apt on 1st flr of Victorian home on Park Ave. \$975 + utils. mo. Available 7/1 (earlier if nec.) 908-874-6242 FRENCHTOWN 2 Bdr., near shops, W/D, \$1100/mo. heat incl., 1.5 mo. sec. no pets, parking. 908-347-3766 or 908-237-9748 GARWOOD - Two 1BR apts. in sm. friendly complex. Heat & hot water incl. No pets. Workout & laundry room onsite. \$970 - \$1115/mo. 908-789-9196 GLEN GARDNER 2 Bdr. w/hardwood flrs., W/D, private parking, newly remodeled, \$1150. + utils. Next to park, 5 min. to I-78, 1.5 mo. sec. No pets. Call 908-347-3766 or 908-237-9748 Lebanon Boro Immac. 1BR, 1 bath, W/D, walk-in closets, new W/D & refrig. \$1,100 incl elec 570-965-9048 *MILFORD* Spacious 1st flr. in Historic Milford Opera House. 2200 sq.ft. Newly renov. \$1400/mo. + util. 908-995-2800 NORTH PLAINFIELD - Victorian 5 ms., 1 BR, formal DR, den, \$850 + utils. NO PETS. 908-561-5085 after 6. PHILLIPSBURG - (2) 1BR. Spac. Victorian apts, renovated. No pets \$725 & \$650/mo. + utils + 1.5 sec. 908-859-2580 RINGOES/LAMB AREA- 4Rm private country 1/2 house, lg. yd., W/D, hookup. \$850/mo. ht and cable paid. Sec/1 yr. lease, cat OK. avail 7/15 609-397-3076 ROSELLE PARK - Bright, airy, 1BR, 2nd flr., w/oc., new EIK in small friendly bldg., laundry incl., close to all trans. \$1025/mo. avail. 908-233-8868 evenings SOMERVILLE - 1&2 BR. Garden apts. from \$850 - \$1050. 1 to 1.5 mo. free rent on all 1 BRs. Mon-Fri, 8-5, 908-725-2909. www.brooksidegardens.net SOMERVILLE - Lovely one bedroom, Garden Apartments close to NYC Trains! Spring Move-in Special! Call for details! 908-725-2596 & Spanish Speaking SUMMIT- 4Rms, 1BR, 1st fl. heat & hot water incl. No pets, nonsmoking. \$1000/mo. 1 1/2 sec. 908-273-5513 after 6pm. WESTFIELD- 4 Rooms, 2nd floor, no pets, \$850+utils. 908-928-1110 Westfield New 1-3BR apt. w/d, refrigerator, o/a, intercom. Starting at \$1300/mo. 908-928-1110	Commercial Property For Rent 410 AUTO AUTOMOTIVE BODY SHOP With spray booths and frame machine looking for ideal person to lease business from owner. 8 days ready for business with established clientele. Call: 908-806-0184 AUTO AUTOMOTIVE REPAIR SHOP 3 Bays w/ lifts, 1 w/ front end alignment machine, A/C in office & shop. Looking for ideal person to lease shop from owner. Call: 908-806-0184 BERKELEY HEIGHTS DOWNTOWN - 2 units avail., retail / office 730 & 745 sq. ft. avail. immmed. Call Landlord for appt. 908-507-6980 Competitive Pricing Must See! FLEMINGTON: PLAZA I Commerce St Various Sizes 1 st Class Space 600-2200 s.f. 908-782-7043 FLEMINGTON MAIN STREET Prof office 1500sf, Off St. prg., Exc. Cond also avail 1500sf w/ise 908-832-0276 Gasoline/Convenient Store available. Located at 1237 Rt. 31 Lebanon, NJ. For info please call Dan 908-782-5218, ext. 14. Somerville - Davenport St. 2500 SF. A deal for professional or medical office packages. Excellent retail package. Call Ted 732-418-1777 WATCHING - Prof. Bldg. approx. 550-1100 sq. ft., avail. immmed. 908-232-9190 Westfield Rental/Office 625 Central Ave. Up to 5500 sq. ft. avail. 908-928-1110 Houses For Rent 430 ALEXANDRIA TWP. Beautiful Setting 2-3 BR, 1 1/2 BA, renov kit w/ new appls, LR, DR, HW flrs., freshly painted, Walk out basement, W/D 5 min. to 78, \$1600/mo. pets negotiable 908-996-3764 CLINTON TOWNSHIP - Wooded lot, 3 BRs, Lg 2 car gar, close to routes 28, 22, 287. \$1700/mo. 908-236-0240 FLEMINGTON BORO - 3BR, 2BA, closed porch, EIK LV, DR, fam. rm, ORC, new carpet & spt., sw/w/ger/nd close to NYC trans. w/d \$1650 + utils. 609-397-6379 FLEMINGTON/RARITAN TWP 4 BR, 2 1/2 BA, EIK, DR, LR, FP, HW flrs, bsmt, storage, pool, pets welcome. \$2030/mo+utils. 4/1 mo sec. Avail 6/5/05 215-862-0245 FLEMINGTON (RT 202) - TWO (2) BEDROOM HOUSES full basement, plenty of parking and play area Each \$1200/mo. + utils. + sec. deposit. Avail. NOW! Also Motel Rooms avail on a weekly rental 908-797-4333 or 908-792-9500 ext 103 HOLLAND TWP 1st flr, 7 Rm, 4 BR, 1 Bath, Full Basement, Par. Fin. N/P, N/S. \$1800/mo. + utils. incl. Avail immmed. HUD ok. Also 2 BR - 2nd flr, 1 Bath, n/p & n/s \$1100/mo. incl. utils. 1.5 sec. avail 6/1 CALL 908-246-7690 MOUNTAINSIDE 1 Bedroom, kitchen, new stove & fridge, new bath w/ W/D, LR, porch, new a/c units, all new blinds, priv drive way, \$1200/mo. call after 6pm. 908-233-4396 SERGEANTSVILLE in scenic village, 3BR, 1.5 BA, single family home. 4th BR or office on first floor. One car garage, off-street parking. Fenced yard overlooks preserved land. Immediate occupancy, one year lease or longer. \$1600/mo. plus utilities N.T. Callway Real Estate. 609-397-1974 Housing To Share 435 FLEMINGTON - Female/ Male working to share 2 bedroom townhouse. \$700/month plus half utilities. 908-284-1490 Rooms 460 Branchburg - 22 W. near Bridgewater - rooms & kitchenette, weekly & monthly rates. Free HBO, TV, Microwave, Refrid. call 908-303-9517 Somerset 1 Room in 4 Bdr. ranch, kitchen, LR, private parking, \$395 per month, 1 yr. lease 908-244-7875 Townhouses/condos For Rent 475 CLINTON - BEAVER BROOK Large 1 BR 2 nd flr., all appl., exc. cond., \$1225 + utils. Avail. immmed. 908-399-7452 CLINTON - Beaver Brook, Lovely 1 BR. All appl. incl. Close to 78 & 22. \$1200/mo. to rent 908-534-6905 FLEMINGTON - CONCORD RIDGE 2 Master suites, 2.5 BA, large rooms/closets, appliances incl., EIK, DR, LR w/FP, fin bsmt, garage, 2 decks, backs to woods, pool/tennis inc., Av. 06/15 \$1695/mo + util. 908-788-6967 FRENCHTOWN - Townhouse 2BR New eat in Kitchen W/D hook up, \$975 per month. Call 908-782-6263 Westfield 2 BEDROOM TOWN- HOME. 1 CAR GARAGE, WASH DRIER, CENTRAL AIR 1650+UTILS. 908-928-1110 908-377-8655 LAVALLETTE - 3 BR house, LR, DR, Kit, full BA, outside closed shower, 1 block ocean, A/C. Avail wky. 908-233-1122 LEI NORTH BEACH, Bay Side contemporary, 4 BR, 2.5 baths, AC, 2 decks, all amenities. Avail August weekly, \$2200/week. Call 908-789-9410 ORLANDO, FLORIDA Luxurious 4 Bedrm, Private home, 2 Bath, Private Pool, Tennis, Laundry, Walk to Golf. Minutes to Disney. \$1200/week. (732) 238-4840 or (732) 581-3589 Seaside Hts. Beautiful large 2 family, close to beach, Avail. for seasonal or wily rental. Call 908-229-9025 WEST COAST VACATION CABIN RENTAL - Mile from entrance to Mt. Rainier National Park, Washington State. Sleeps 4 people, fully furnished including TV, VCR/DVD and Satellite Radio. Rental includes National Park Admission Pass, use of snowshoes, mountain bikes, and hiking equipment. Easy walking distance to terrific restaurant. Available by the week (\$735) or weekends (Fri-Sun, \$235). Call owner at (541) 760-1261. Leave email address. Photos available. WEST COAST VACATION CABIN RENTAL - Mile from entrance to Mt. Rainier National Park, Washington State. Sleeps 4 people, fully furnished including TV/VCR/DVD and Satellite Radio. Rental includes National Park Admission Pass, use of snowshoes, mountain bikes, and hiking equipment. Easy walking distance to terrific restaurant. Available by the week (\$735) or weekends (Fri-Sun, \$235). Call owner at (541) 760-1261. Leave email address. Photos available. Acresage For Rent 483 FARM LAND FOR RENT Monmouth County, Please call to discuss terms. 732-262-4448 Merchandise Building Material & Equipment 520 BUILDING MATERIALS: Metal Roofing, Siding, Buy Direct. We Manufacture for Residential, Commercial, Agriculture in Galvanized, Galvalume, Aluminum. Painted #1, #2, Seconds, Rejects, etc. LOW PRICES! FREE Literature. 1-800-373-3703 FIAT ALLIS FD5 - 6 way 8' blade, rear PTO, engine, L&C undercarriage, J-D 790ELC w/thumb, Kobelco LK600 425 yd wheel loader. 908-755-4431 Clothing 530 WEDDING GOWN FOR SALE Hand made by professional seamstress, cleaned and vacuum packed, incl detachable train, veil, head piece & card bag, size 10-12 \$200 908-755-1186 Computers & Electronic Equipment 537 A NEW COMPUTER - BUT NO CASH? You're APPROVED - Guaranteed! NO CREDIT CHECK - Bad Credit - Bankruptcy OK. 1-800-420-0326 10A-9P EST - Mon-Fri *Checking Account Required. www.pcs4all.com A NEW COMPUTER - BUT NO CASH? You're APPROVED - Guaranteed! NO CREDIT CHECK - Bad Credit - Bankruptcy OK. 1-800-420-0326 10A-9P EST - Mon-Fri *Checking Account Required. www.pcs4all.com COMPAQ - Presario PC, Pentium 3, 64 MB of Ram, Windows ME, 10 GB HD, DVD rom, 17 inch monitor, 2 speakers, \$250 or best offer. 973-888-7499 Furniture 560 5 PIECE LR SET- Sofa, love seat, Chair & ottoman, blk/gray, ivory end table & coffee table, exc. cond. \$305 for all. 908-725-9363 Beautiful 3 Yr old Sofa Set - Light blue w/white flowers. Paid \$2400 asking \$600. 908-369-4137 BEDROOM SET 7 pc's, Single bed, dresser, mirror chest & nite stand. Lill 2200, Set 975. New in box, can deliver. Call 732-259-6690 Bedroom Set - Girls, 3 pc. Honey pine Canopy bed, triple dresser, desk, hutch \$600 908-598-9872 BEDROOM SET - Solid oak, dresser w/ 12 mirror/desk & cannonal hutch/bed. \$500 CBC. 908-534-0099 DINING ROOM Antique Pine Table, 8 upholstered chairs, French Country \$2000. Will Email Picture 908-598-7443 Dining Room - double end table, 8 chairs, lighted hutch. Still in box. Value \$3000 - sacrifice \$1500 call 732-285-6690 Dining Room Set- Thomas- ville, cherry wood, cor. hutch, 6 chairs, 108" table. \$2500. Call 908-534-2273 after 4:30pm. FAMILY ROOM FURN. - Sofa & love seat, dual recliner, 2 yds old, exc. cond., fl lamp & table incl. \$800. 908-604-9239 LIVING RM NEW \$299 incl: sofa, loveseat. Also model house furniture. Call deliver 908-281-7117 MATTRESS SET- King plush pillow top, new in plastic w/warranty set \$250 732-259-6690 MATTRESS SET- Queen pillow top, brand name new w/warranty. \$135 732-259-6690 Sofa & Love seat, new cond., off white w/floral pattern, \$400. 908-526-1941 TABLE - BLACK MARBLE, simple elegant, 36" x 70" x 27" great for rmy/offices/outdoors. \$800 908-522-1909
-----------------------------------------------------------------------------------------------------------------------------------------------------------------------------------------------------------------------------------------------------------------------------------------------------------------------------------------	---------------------------------------------------------------------------------------------------------------------------------------------------------------------------------------------------------------------------------------------------------------------------------------------------------------------------------------------------	------------------------------------------------------------------------------------------------------------------------------------------------------------------------------------------------------------------------------------------------------------------------------------------------------------------------------------------------------------------------------------------------------------	------------------------------------------------------------------------------------------------------------------------------------------------------------------------------------------------------------------------------------------------------------------------------------------------------------------------------------------------------------------------------------------------------------------------	------------------------------------------------------------------------------------------------------------------------------------------------------------------------------------------------------------------------------------------------------------------------------------------------------------------------------------------------------------------------------------------------------------------------------------------------------------------------------	--------------------------------------------------------------------------------------------------------------------------------------------------------------------------------------------------------------------------------------------------------------------------------------------------------------------------------------------------------------------------------------------------------------------------------------------------------------------------------------------------------------------------------------------------------------------------------------------------------------------------------------------------------------------------------------------------------------------------------------------------------------------------------------------------------------------------	-----------------------------------------------------------------------------------------------------------------------------------------------------------------------------------------------------------------------------------------------------------------------------------------------------------------------------------------------------------------------------------------------------------------------------------------------------------------------------------------------------------------------------------------------------------------------------------------------------------------------------------------------------------------------------------------------------------------------------------------------------------------------------------------------------------------------------------------------------------------------------------------------------------------------------------------------------------------------------------------------------------------------------------------------------------------------------------------------------------------------------------------------------------------	-------------------------------------------------------------------------------------------------------------------------------------------------------------------------------------------------------------------------------------------------------------------------------------------------------------------------------------------------------------------------------------------------------------------------------------------------------------------------------------------------------------------------------------------------------------------------------------------------------------------------------------------------------------------------------------------------------------------------------------------------------------------------------------------------------------------------------------------------------------------------------------------------------------------------------------------------------------------------------------------------------------------------------------------------------------------------------------------------------------------------------------------------------------------------------------------------------------------------------------------------------------------------------------------------------------------------------------------------------------------------------------------------------------------------------------------------------------------------------------------------------------------------------------------------------------------------------------------------------------------------------------------------------------------------------------------------------------------------------------------------------------------------------------------------------------------------------------------------------------------------------------------------------------------------------------------------------------------------------------------------------------------------------------------------------------------------------------------------------------------------------------------------------------------------------------------------------------------------------------------------------------------------------------------------------------------------------------------------------------------------------------------------------------------------------------------------------------------------------------------------------------------------------------------------------------------------------------------------------------------------------------------------------------------------------------------------------------------------------------------------------------------------------------------------------------------------------------------------------------------------------------------------------------------------------------------------------------------------------------------------------------------------------------------------------------------------------------------------------------------------------------------------------------------------------------------------------------------	----------------------------------------------------------------------------------------------------------------------------------------------------------------------------------------------------------------------------------------------------------------------------------------------------------------------------------------------------------------------------------------------------------------------------------------------------------------------------------------------------------------------------------------------------------------------------------------------------------------------------------------------------------------------------------------------------------------------------------------------------------------------------------------------------------------------------------------------------------------------------------------------------------------------------------------------------------------------------------------------------------------------------------------------------------------------------------------------------------------------------------------------------------------------------------------------------------------------------------------------------------------------------------------------------------------------------------------------------------------------------------------------------------------------------------------------------------------------------------------------------------------------------------------------------------------------------------------------------------------------------------------------------------------------------------------------------------------------------------------------------------------------------------------------------------------------------------------------------------------------------------------------------------------------------------------------------------------------------------------------------------------------------------------------------------------------------------------------------------------------------------------------------------------------------------------------------------------------------------------------------------------------------------------------------------------------------------------------------------------------------------------------------------------------------------------------------------------------------------------------------------------------------------------------------------------------------------------------------------------------------------------------------------------------------------------------------------------------------------------------------------------------------------------------------------------------------------------------------------------------------------------------------------------------------------------------------------------------------------------------------------------------------------------------------------------------------------------------------------------------------------------------------------------------------------------------------------------------------------------------------------------------------------------------------------------------------------------------------------------------------------------------------------------------------------------------------------------------------------------------------------------------------------------------------------------------------------------------------------------------------------------------------------------------------------------------------------------------------------------------------------------------------------------------------------------------------------------------------------------------------------------------------------------------------------------------------------------------------------------------------------------------------------------------------------------------------------------------------------------------------------------------------------------------------------------------------------------------------------------------------------------------------------------------------------------------------------------------------------------------------------------------------------------------------------------------------------------------------------------------------------------------------------------------------------------------------------------------------------------------------------------------------------------------------------------------------------------------------------------------------------------------------------------------------------------------------------------------------------------------------------------------------------------------------------------------------------------------------------------------------------------------------------------------------------------------------------------------------------------------------------------------------------------------------------------------------------------------------------------------------------------------------------------------------------------------------------------------------------------------------------------------------------------------------------------------------------------------------------------------------------------------------------------------------------------------------------------------------------------------------------------------------------------------------------------------------------------------------------------------------------------------------------------------------------------------------------------------------------------------------------------------------------------------------------------------------------------------------------------------------------------------------------------------------------------------------------------------------------------------------------------------------------------------------------------------------------------------------------------------------------------------------------------------------------------------------------------------------------------------------------------------------------------------------------------------------------------------------------------------------------------------------------------------------------------------------------------------------------------------------------------------------------------------------------------------------------------------------------------------------------------------------------------------------------------------------------------------------------------------------------------------------------------------------------------------------------------------------------------------------------------------------------------------------------------------------------------------------------------------------------------------------------------------------------------------------------------------------------------------------------------------------------------------------------------------------------------------------------------------------------------------------------------------------------------------------------------------------------------------------------------------------------------------------------------------------------------------------------------------------------------------------------------------------------------------------------------------------------------------------------------------------------------------------------------------------------------------------------------------------------------------------------------------------------------------------------------------------------------------------------------------------------------------------------------------------------------------------------------------------------------------------------------------------------------------------------------------------------------------------------------------------------------------------------------------------------------------------------------------------------------------------------------------------------------------------------------------------------------------------------------------------------------------------------------------------------------------------------------------------------------------------------------------------------------------------------------------------------------------------------------------------------------------------------------------------------------------------------------------------------------------------------------------------------------------------------------

Somerset County Classified

Sell your car, furniture, or no longer needed items

\$19.95

Run it 'til you sell it!

The Reporter **nj**

4 Line Ad. Additional lines \$4.90. Private party only. For up to six months. Seller responsible for renewing ad.

618278

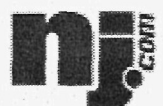
Call 800.559.9495 to place your ad

SOMERSET & MIDDLESEX MORTGAGE RATES									
Program	Rate	pts	%dn	lip	APR	Program	Rate	pts	%dn
Absolute Mortgage Co. 877-606-RATE						Equaloan.com 877-877-6364			
30-yr. Fixed	5.375	0.00	5%	30	5.390	30-yr. ARM	5.500	0.00	5%
15-yr. Fixed	5.000	0.00	5%	30	5.040	15-yr. ARM	5.125	0.00	5%
30-yr. Jumbo	5.625	0.13	10%	30	5.670	30-yr. Jumbo	5.750	0.00	5%
5/1 ARM	4.625	0.00	5%	30	4.660	3/1 ARM	4.125	0.00	5%
3/1 ARM	4.250	0.00	5%	30	4.290	Never Pay A Lender Fee.			
15-yr. Jumbo	5.125	0.00	10%	30	5.160	ditech.com 800-616-8208			
Lowest Rates! Free Float-Downs! Fees are Only \$399. www.absolute-mortgage.com e-mail: Support@AbsoluteMortgageCo.com						30-yr. Fixed	5.250	2.00	20%
						15-yr. Fixed	4.875	2.00	20%
						30-yr. Jumbo	5.625	2.00	20%
						15-yr. Jumbo	5.125	2.00	20%
						Se habla Espanol. Your mortgage solution. Delivered! Apply now at ditech.com			
						Lighthouse Mortgage 800-784-1331			
						30-yr. Fixed	5.500	0.00	5%
						15-yr. Fixed	5.000	0.00	5%
						20-yr. Fixed	5.375	0.00	5%
						30-yr. Jumbo	5.875	0.00	10%
						5/1 conf. ARM	4.750	0.00	5%
						Consistently Low Rates. Open 7 Days a week 9-9.			
						A Custom Mortgage Sol. 800-259-9510			
						30-yr. Fixed	5.000	2.00	5%
						15-yr. Fixed	5.250	1.00	5%
						30-yr. Jumbo	5.250	2.00	5%
						15-yr. Fixed	4.500	2.00	5%
						5/1 ARM	1.000	0.00	5%
						A-D Credit. 80/20 Purchase. No Doc to \$1m. Loans to \$4m.			
						AHM Mortgage 800-924-9091			
						30-yr. Fixed	5.500	0.00	5%
						30-yr. Jumbo	5.750	0.00	5%
						15-yr. Fixed	5.250	0.00	5%
						30-yr. Jumbo	4.750	0.00	5%
						5/1 Jbo. ARM	5.000	0.00	5%
						Direct Lender! No Income Loans! No Broker fee, Orig. or Appl. Fee! No Cost Refi Avail! Close at Home! Princeton.			
						Partners Mortgage 888-RATE-SALE			
						30-yr. Fixed	4.875	2.00	5%
						15-yr. Fixed	4.375	2.00	5%
						30-yr. Jumbo	5.250	2.00	5%
						15-yr. Jumbo	4.750	2.00	5%
						Zero Points, Zero Fee Loans Available. Free Refinance forever. PartnersM@aol.com. Hablamos Espanol.			

Information provided by The National Financial News Services. Rates are valid as of May 13, 2005. Contact lenders directly for APR's, additional fees and services. Conforming quotes based on \$130,000 loan with 20% down with no PMI; Jumbo quotes based on \$360,000 all applicable loan fees included. Loan amounts may affect rates. Lock-in period in days. Borrowers should compare the specifics of various loan arrangements. Check rates daily on the Internet at www.nj.com.

© 2003 NFNS.

Check mortgage rates daily at:



Everything Jersey

Updated 3:00pm Monday thru Friday



EQUAL OPPORTUNITY

EQUAL OPPORTUNITY

EQUAL OPPORTUNITY

EQUAL OPPORTUNITY

EQUAL OPPORTUNITY

EQUAL OPPORTUNITY

EQUAL OPPORTUNITY

EQUAL OPPORTUNITY

EQUAL OPPORTUNITY

EQUAL OPPORTUNITY

EQUAL OPPORTUNITY

EQUAL OPPORTUNITY

EQUAL OPPORTUNITY

EQUAL OPPORTUNITY

EQUAL OPPORTUNITY

EQUAL OPPORTUNITY

EQUAL OPPORTUNITY

EQUAL OPPORTUNITY

EQUAL OPPORTUNITY

EQUAL OPPORTUNITY

EQUAL OPPORTUNITY

EQUAL OPPORTUNITY

EQUAL OPPORTUNITY

EQUAL OPPORTUNITY

EQUAL OPP

Merchandise
For the Farm 565
IH/CASE 244 TRACTOR 4WD, diesel, w/ 240 original hrs, like new, exc. tires, h/w rear frame Pto, asking \$7200. Implement available. Cement mixer, York rake, JD 7 blower, part note digger, best offer. 908-280-0507

General Merchandise 580
Above ground pool only, 21 x 52 round, new still in boxes, \$900. 201-945-5206 or 201-935-3251

Garage & Yard Sales 600
PLAINFIELD FRIENDS OF SLEEPY HOLLOW 12th ANNUAL NEIGHBORHOOD GARAGE SALE: Sunday, May 22nd 9-4pm Over 120 homes. Rain or Shine. Contact Kathleen 908-668-1595

Wanted To Buy 625
ALL LIONEL, FLYER & OTHER TRAINS. Top cash prices paid. 800-943-0471 or 973-425-1538

Antiques & Collectibles
One item to enter estate. Call Mike 906-615-7023

Liberty Antiques
Highest cash prices paid for anything of value. House calls to tri-state area. Free appraisals. Buying furniture, cupboards, lamps, rugs, clocks, paintings, prints, cut glass, art glass, depression and carnival glass, coins, silver, gold, all jewelry, stamps, postcards, china, porcelain, all pottery including Rockwood, Fulper, Rosville, Stangl, steins, crocks, jugs, doorknobs, banks, toys, trains, dolls, advertising tobacco tins, swords, canes, linens, quilts, music boxes, holiday decorations & more. Call Charlie 908-237-3430 or Natalie 908-507-4749

Pets & Animals
Horses 630
BOMB PROOF - indoor/outdoor arena or trail, lg 14 yr., old Bay/Whit sock pony mare, Super 1" pony Solid and quiet enough for a beginner but will hunt around a 3 ft. course, been shown locally, mini tour children. Saddle, outgrown, \$6500. 908-300-3220

Pets 640
GOLDEN RETRIEVER PUPS: AKC, exceptional quality, genetics & temperament a priority. 215-752-9969

Himalayan Kittens: CFA Reg. Adorable. Home raised w/ parents. 1st shot. \$525. 908-832-9188

LAB PUPPIES AKC
Int'l. champion sire. 908-246-8509 or 732-469-8655

PUP SALE!!!
\$50 Up on older puppies & 113 younger pups. All Types and Sizes. Open Saturday and Sunday. Hours 10-5. J.P. O'Neill Kennels 3637 US Highway #1 Princeton, NJ

FREE 4-ROOM DIRECTV SYSTEM
INCLUDES STANDARD INSTALLATION. Plus 140+ Channels. \$29.99/mo for 3 months. Access over 225 channels! Limited time offer. SH, restrictions apply. 1-800-208-3961

GE MONOGRAM COOKTOP
4 Burners, plus grill. 36" LP gas, new, never installed \$1,000. 908-996-3966

GUN SHOW
AT THE DAYS INN 1946 Soranton-Carbondale Hwy., Soranton, PA Open to the public May 21, 95, May 22, 95. For info 717-397-3038

HOT TUB - VICTORIAN
First 5750 takes it.... 732-271-0272

Orlando Disney Area 7 day family vacation (good for 1 year), paid \$600 will sell for \$199! 732-884-0982

Snow Blower Ariens 824
3" 8HP, Elec. start, 8 spd, new, w/8 hrs. use. \$699. 903-834-2513

SPA & HOT TUB COVERS
\$99 & Up. Cover lifters \$169. 988-772-7810

WOODEN SAVING SET - Slide and Glider, for room. Aged 2 1/2. Hardly used. \$350. Call 908-595-1333

Lawn & Garden 581
DARK RICH SCREENED TOP SOIL - 10 yds. \$250. Fill Dirt. \$150. Leave Message. 908-634-4766

LAWN TRACTOR 20 HP, Simplicity Sun Star, w/60" mower deck, 32500 obo. 908-806-2199

PRIVACY HEDGE - SPRING SALE - Leyland Cypress "Cedar" Fast Grower 3'4" high. Free Delivery. Regularly \$29.95. Only \$12.95 each. Also, Red Maple, Dogwood, Cryptomeria. 434-949-9550. www.nightchiam.com

COOL STUFF
Toro 650 w/ Acuator 3.5 HP Toro 24" Snow Blower, Parker Dethatcher 5 HP. Little Wonder Leafblower SHP. Tree & Shrub hand truck w/6" wheels, Scotts Drop Spreader, Truck ramps (wood), Backpack Sprayer. Call for info. 908-236-9339

Trees For Sale
Mostly Evergreens And Flowering Trees Services Available 908-995-0784

Musical Instruments 585
PRICED TO SELL
BALDWIN PIANO - oak, good condition \$350 908-782-4686

Garage & Yard Sales 600
LAMBERTVILLE Sat., Sun. 5/21 & 5/22, 9am-3pm. 139 Vellver Ave. Household items, 200+ square feet of ceramic tile, lots of baby items & toys.

Financial & Business Opportunities 650
Are you making \$1,710 per week? All cash vending routes with prime locations available now! Under \$9,000 investment required. Call Toll Free (247) 800-276-5584.

EARN \$\$\$ @ HOME!
Home based online biz. Ex. \$\$\$ potential. Full training & support. Free info! Visit www.workathomewealthgo.com

SSSEAN INSTANT CASHSS
Receive \$12,000! Never Repay! For Personal Bills, School, Business. \$49 BILLION Left Unclaimed from 2004. Live Operators! 1-800-806-6081 Ext.65

SSSEAN INSTANT CASHSS
Receive \$12,000! Never Repay! For Personal Bills, School, Business. \$49 BILLION Left Unclaimed from 2004. Live Operators! 1-800-806-6081 Ext.65

SSSEAN INSTANT CASHSS
Receive \$12,000! Never Repay! For Personal Bills, School, Business. \$49 BILLION Left Unclaimed from 2004. Live Operators! 1-800-806-6081 Ext.65

SSSEAN INSTANT CASHSS
Receive \$12,000! Never Repay! For Personal Bills, School, Business. \$49 BILLION Left Unclaimed from 2004. Live Operators! 1-800-806-6081 Ext.65

SSSEAN INSTANT CASHSS
Receive \$12,000! Never Repay! For Personal Bills, School, Business. \$49 BILLION Left Unclaimed from 2004. Live Operators! 1-800-806-6081 Ext.65

SSSEAN INSTANT CASHSS
Receive \$12,000! Never Repay! For Personal Bills, School, Business. \$49 BILLION Left Unclaimed from 2004. Live Operators! 1-800-806-6081 Ext.65

SSSEAN INSTANT CASHSS
Receive \$12,000! Never Repay! For Personal Bills, School, Business. \$49 BILLION Left Unclaimed from 2004. Live Operators! 1-800-806-6081 Ext.65

SSSEAN INSTANT CASHSS
Receive \$12,000! Never Repay! For Personal Bills, School, Business. \$49 BILLION Left Unclaimed from 2004. Live Operators! 1-800-806-6081 Ext.65

SSSEAN INSTANT CASHSS
Receive \$12,000! Never Repay! For Personal Bills, School, Business. \$49 BILLION Left Unclaimed from 2004. Live Operators! 1-800-806-6081 Ext.65

SSSEAN INSTANT CASHSS
Receive \$12,000! Never Repay! For Personal Bills, School, Business. \$49 BILLION Left Unclaimed from 2004. Live Operators! 1-800-806-6081 Ext.65

SSSEAN INSTANT CASHSS
Receive \$12,000! Never Repay! For Personal Bills, School, Business. \$49 BILLION Left Unclaimed from 2004. Live Operators! 1-800-806-6081 Ext.65

SSSEAN INSTANT CASHSS
Receive \$12,000! Never Repay! For Personal Bills, School, Business. \$49 BILLION Left Unclaimed from 2004. Live Operators! 1-800-806-6081 Ext.65

SSSEAN INSTANT CASHSS
Receive \$12,000! Never Repay! For Personal Bills, School, Business. \$49 BILLION Left Unclaimed from 2004. Live Operators! 1-800-806-6081 Ext.65

SSSEAN INSTANT CASHSS
Receive \$12,000! Never Repay! For Personal Bills, School, Business. \$49 BILLION Left Unclaimed from 2004. Live Operators! 1-800-806-6081 Ext.65

SSSEAN INSTANT CASHSS
Receive \$12,000! Never Repay! For Personal Bills, School, Business. \$49 BILLION Left Unclaimed from 2004. Live Operators! 1-800-806-6081 Ext.65

SSSEAN INSTANT CASHSS
Receive \$12,000! Never Repay! For Personal Bills, School, Business. \$49 BILLION Left Unclaimed from 2004. Live Operators! 1-800-806-6081 Ext.65

SSSEAN INSTANT CASHSS
Receive \$12,000! Never Repay! For Personal Bills, School, Business. \$49 BILLION Left Unclaimed from 2004. Live Operators! 1-800-806-6081 Ext.65

SSSEAN INSTANT CASHSS
Receive \$12,000! Never Repay! For Personal Bills, School, Business. \$49 BILLION Left Unclaimed from 2004. Live Operators! 1-800-806-6081 Ext.65

SSSEAN INSTANT CASHSS
Receive \$12,000! Never Repay! For Personal Bills, School, Business. \$49 BILLION Left Unclaimed from 2004. Live Operators! 1-800-806-6081 Ext.65

SSSEAN INSTANT CASHSS
Receive \$12,000! Never Repay! For Personal Bills, School, Business. \$49 BILLION Left Unclaimed from 2004. Live Operators! 1-800-806-6081 Ext.65

SSSEAN INSTANT CASHSS
Receive \$12,000! Never Repay! For Personal Bills, School, Business. \$49 BILLION Left Unclaimed from 2004. Live Operators! 1-800-806-6081 Ext.65

SSSEAN INSTANT CASHSS
Receive \$12,000! Never Repay! For Personal Bills, School, Business. \$49 BILLION Left Unclaimed from 2004. Live Operators! 1-800-806-6081 Ext.65

SSSEAN INSTANT CASHSS
Receive \$12,000! Never Repay! For Personal Bills, School, Business. \$49 BILLION Left Unclaimed from 2004. Live Operators! 1-800-806-6081 Ext.65

Financial & Business Opportunities 650
Are you making \$1,710 per week? All cash vending routes with prime locations available now! Under \$9,000 investment required. Call Toll Free (247) 800-276-5584.

EARN \$\$\$ @ HOME!
Home based online biz. Ex. \$\$\$ potential. Full training & support. Free info! Visit www.workathomewealthgo.com

SSSEAN INSTANT CASHSS
Receive \$12,000! Never Repay! For Personal Bills, School, Business. \$49 BILLION Left Unclaimed from 2004. Live Operators! 1-800-806-6081 Ext.65

SSSEAN INSTANT CASHSS
Receive \$12,000! Never Repay! For Personal Bills, School, Business. \$49 BILLION Left Unclaimed from 2004. Live Operators! 1-800-806-6081 Ext.65

SSSEAN INSTANT CASHSS
Receive \$12,000! Never Repay! For Personal Bills, School, Business. \$49 BILLION Left Unclaimed from 2004. Live Operators! 1-800-806-6081 Ext.65

SSSEAN INSTANT CASHSS
Receive \$12,000! Never Repay! For Personal Bills, School, Business. \$49 BILLION Left Unclaimed from 2004. Live Operators! 1-800-806-6081 Ext.65

SSSEAN INSTANT CASHSS
Receive \$12,000! Never Repay! For Personal Bills, School, Business. \$49 BILLION Left Unclaimed from 2004. Live Operators! 1-800-806-6081 Ext.65

SSSEAN INSTANT CASHSS
Receive \$12,000! Never Repay! For Personal Bills, School, Business. \$49 BILLION Left Unclaimed from 2004. Live Operators! 1-800-806-6081 Ext.65

SSSEAN INSTANT CASHSS
Receive \$12,000! Never Repay! For Personal Bills, School, Business. \$49 BILLION Left Unclaimed from 2004. Live Operators! 1-800-806-6081 Ext.65

SSSEAN INSTANT CASHSS
Receive \$12,000! Never Repay! For Personal Bills, School, Business. \$49 BILLION Left Unclaimed from 2004. Live Operators! 1-800-806-6081 Ext.65

SSSEAN INSTANT CASHSS
Receive \$12,000! Never Repay! For Personal Bills, School, Business. \$49 BILLION Left Unclaimed from 2004. Live Operators! 1-800-806-6081 Ext.65

SSSEAN INSTANT CASHSS
Receive \$12,000! Never Repay! For Personal Bills, School, Business. \$49 BILLION Left Unclaimed from 2004. Live Operators! 1-800-806-6081 Ext.65

SSSEAN INSTANT CASHSS
Receive \$12,000! Never Repay! For Personal Bills, School, Business. \$49 BILLION Left Unclaimed from 2004. Live Operators! 1-800-806-6081 Ext.65

SSSEAN INSTANT CASHSS
Receive \$12,000! Never Repay! For Personal Bills, School, Business. \$49 BILLION Left Unclaimed from 2004. Live Operators! 1-800-806-6081 Ext.65

SSSEAN INSTANT CASHSS
Receive \$12,000! Never Repay! For Personal Bills, School, Business. \$49 BILLION Left Unclaimed from 2004. Live Operators! 1-800-806-6081 Ext.65

SSSEAN INSTANT CASHSS
Receive \$12,000! Never Repay! For Personal Bills, School, Business. \$49 BILLION Left Unclaimed from 2004. Live Operators! 1-800-806-6081 Ext.65

SSSEAN INSTANT CASHSS
Receive \$12,000! Never Repay! For Personal Bills, School, Business. \$49 BILLION Left Unclaimed from 2004. Live Operators! 1-800-806-6081 Ext.65

SSSEAN INSTANT CASHSS
Receive \$12,000! Never Repay! For Personal Bills, School, Business. \$49 BILLION Left Unclaimed from 2004. Live Operators! 1-800-806-6081 Ext.65

SSSEAN INSTANT CASHSS
Receive \$12,000! Never Repay! For Personal Bills, School, Business. \$49 BILLION Left Unclaimed from 2004. Live Operators! 1-800-806-6081 Ext.65

SSSEAN INSTANT CASHSS
Receive \$12,000! Never Repay! For Personal Bills, School, Business. \$49 BILLION Left Unclaimed from 2004. Live Operators! 1-800-806-6081 Ext.65

SSSEAN INSTANT CASHSS
Receive \$12,000! Never Repay! For Personal Bills, School, Business. \$49 BILLION Left Unclaimed from 2004. Live Operators! 1-800-806-6081 Ext.65

SSSEAN INSTANT CASHSS
Receive \$12,000! Never Repay! For Personal Bills, School, Business. \$49 BILLION Left Unclaimed from 2004. Live Operators! 1-800-806-6081 Ext.65

SSSEAN INSTANT CASHSS
Receive \$12,000! Never Repay! For Personal Bills, School, Business. \$49 BILLION Left Unclaimed from 2004. Live Operators! 1-800-806-6081 Ext.65

SSSEAN INSTANT CASHSS
Receive \$12,000! Never Repay! For Personal Bills, School, Business. \$49 BILLION Left Unclaimed from 2004. Live Operators! 1-800-806-6081 Ext.65

SSSEAN INSTANT CASHSS
Receive \$12,000! Never Repay! For Personal Bills, School, Business. \$49 BILLION Left Unclaimed from 2004. Live Operators! 1-800-806-6081 Ext.65

Financial & Business Opportunities 650
Are you making \$1,710 per week? All cash vending routes with prime locations available now! Under \$9,000 investment required. Call Toll Free (247) 800-276-5584.

EARN \$\$\$ @ HOME!
Home based online biz. Ex. \$\$\$ potential. Full training & support. Free info! Visit www.workathomewealthgo.com

SSSEAN INSTANT CASHSS
Receive \$12,000! Never Repay! For Personal Bills, School, Business. \$49 BILLION Left Unclaimed from 2004. Live Operators! 1-800-806-6081 Ext.65

SSSEAN INSTANT CASHSS
Receive \$12,000! Never Repay! For Personal Bills, School, Business. \$49 BILLION Left Unclaimed from 2004. Live Operators! 1-800-806-6081 Ext.65

SSSEAN INSTANT CASHSS
Receive \$12,000! Never Repay! For Personal Bills, School, Business. \$49 BILLION Left Unclaimed from 2004. Live Operators! 1-800-806-6081 Ext.65

SSSEAN INSTANT CASHSS
Receive \$12,000! Never Repay! For Personal Bills, School, Business. \$49 BILLION Left Unclaimed from 2004. Live Operators! 1-800-806-6081 Ext.65

SSSEAN INSTANT CASHSS
Receive \$12,000! Never Repay! For Personal Bills, School, Business. \$49 BILLION Left Unclaimed from 2004. Live Operators! 1-800-806-6081 Ext.65

SSSEAN INSTANT CASHSS
Receive \$12,000! Never Repay! For Personal Bills, School, Business. \$49 BILLION Left Unclaimed from 2004. Live Operators! 1-800-806-6081 Ext.65

SSSEAN INSTANT CASHSS
Receive \$12,000! Never Repay! For Personal Bills, School, Business. \$49 BILLION Left Unclaimed from 2004. Live Operators! 1-800-806-6081 Ext.65

SSSEAN INSTANT CASHSS
Receive \$12,000! Never Repay! For Personal Bills, School, Business. \$49 BILLION Left Unclaimed from 2004. Live Operators! 1-800-806-6081 Ext.65

SSSEAN INSTANT CASHSS
Receive \$12,000! Never Repay! For Personal Bills, School, Business. \$49 BILLION Left Unclaimed from 2004. Live Operators! 1-800-806-6081 Ext.65

SSSEAN INSTANT CASHSS
Receive \$12,000! Never Repay! For Personal Bills, School, Business. \$49 BILLION Left Unclaimed from 2004. Live Operators! 1-800-806-6081 Ext.65

SSSEAN INSTANT CASHSS
Receive \$12,000! Never Repay! For Personal Bills, School, Business. \$49 BILLION Left Unclaimed from 2004. Live Operators! 1-800-806-6081 Ext.65

SSSEAN INSTANT CASHSS
Receive \$12,000! Never Repay! For Personal Bills, School, Business. \$49 BILLION Left Unclaimed from 2004. Live Operators! 1-800-806-6081 Ext.65

SSSEAN INSTANT CASHSS
Receive \$12,000! Never Repay! For Personal Bills, School, Business. \$49 BILLION Left Unclaimed from 2004. Live Operators! 1-800-806-6081 Ext.65

SSSEAN INSTANT CASHSS
Receive \$12,000! Never Repay! For Personal Bills, School, Business. \$49 BILLION Left Unclaimed from 2004. Live Operators! 1-800-806-6081 Ext.65

SSSEAN INSTANT CASHSS
Receive \$12,000! Never Repay! For Personal Bills, School, Business. \$49 BILLION Left Unclaimed from 2004. Live Operators! 1-800-806-6081 Ext.65

SSSEAN INSTANT CASHSS
Receive \$12,000! Never Repay! For Personal Bills, School, Business. \$49 BILLION Left Unclaimed from 2004. Live Operators! 1-800-806-6081 Ext.65

SSSEAN INSTANT CASHSS
Receive \$12,000! Never Repay! For Personal Bills, School, Business. \$49 BILLION Left Unclaimed from 2004. Live Operators! 1-800-806-6081 Ext.65

SSSEAN INSTANT CASHSS
Receive \$12,000! Never Repay! For Personal Bills, School, Business. \$49 BILLION Left Unclaimed from 2004. Live Operators! 1-800-806-6081 Ext.65

SSSEAN INSTANT CASHSS
Receive \$12,000! Never Repay! For Personal Bills, School, Business. \$49 BILLION Left Unclaimed from 2004. Live Operators! 1-800-806-6081 Ext.65

SSSEAN INSTANT CASHSS
Receive \$12,000! Never Repay! For Personal Bills, School, Business. \$49 BILLION Left Unclaimed from 2004. Live Operators! 1-800-806-6081 Ext.65

SSSEAN INSTANT CASHSS
Receive \$12,000! Never Repay! For Personal Bills, School, Business. \$49 BILLION Left Unclaimed from 2004. Live Operators! 1-800-806-6081 Ext.65

SSSEAN INSTANT CASHSS
Receive \$12,000! Never Repay! For Personal Bills, School, Business. \$49 BILLION Left Unclaimed from 2004. Live Operators! 1-800-806-6081 Ext.65

SSSEAN INSTANT CASHSS
Receive \$12,000! Never Repay! For Personal Bills, School, Business. \$49 BILLION Left Unclaimed from 2004. Live Operators! 1-800-806-6081 Ext.65

Financial Services 655
SAVE UP TO 57% ON MONTHLY BILLS! FREE consultation. Debt help. Be treated with honesty, understanding and respect. CareOne Credit Counseling. 1-866-410-0905(toll-free). For a list of CareOne providers and licensing information visit: www.careonecredit.com

STOP FORECLOSURE GUARANTEED. THIS IS NOT BANKRUPTCY. WE DO NOT BUY HOUSES. 800-771-4453 ext. 2525. www.house911.com

STOP FORECLOSURE GUARANTEED. THIS IS NOT BANKRUPTCY. WE DO NOT BUY HOUSES. 800-771-4453 ext. 2525. www.house911.com

Professional Services
Child Care/Nursery Schools 734
MONDAY MORNING INC. Reliable, insured care for infants & toddlers. 908/526-4854

Entertainment Services 755
WWW.PONYSHAR.COM is coming to Town! Offering exciting Pony Horseman-ship Summer Programs for 4 year old - 14 year old. Visit our Web Site or call for nearest locations. (908) 439-3901

Home Health Services 762
Open Arms Embracing Quality Home Care Are you concerned about a parent or loved one being home alone? Do you wonder how you will get your parent to an appointment? Let us help and give you peace of mind. We offer quality staff with a deep commitment to others. Our caregivers are pre-screened, bonded & insured. Let us work for you! 908-823-0659

SSCASH NOWSS
AS SEEN ON TV! Never Repay! Gov't Grants for Personal Bills, School, Business. \$47 billion left unclaimed. Live Operators! 1-800-574-1804 ext. 209

SSCASH NOWSS
AS SEEN ON TV! Never Repay! Gov't Grants for Personal Bills, School, Business. \$47 billion left unclaimed. Live Operators! 1-800-574-1804 ext. 209

SSCASH NOWSS
AS SEEN ON TV! Never Repay! Gov't Grants for Personal Bills, School, Business. \$47 billion left unclaimed. Live Operators! 1-800-574-1804 ext. 209

SSCASH NOWSS
AS SEEN ON TV! Never Repay! Gov't Grants for Personal Bills, School, Business. \$47 billion left unclaimed. Live Operators! 1-800-574-1804 ext. 209

SSCASH NOWSS
AS SEEN ON TV! Never Repay! Gov't Grants for Personal Bills, School, Business. \$47 billion left unclaimed. Live Operators! 1-800-574-1804 ext. 209

SSCASH NOWSS
AS SEEN ON TV! Never Repay! Gov't Grants for Personal Bills, School, Business. \$47 billion left unclaimed. Live Operators! 1-800-574-1804 ext. 209

SSCASH NOWSS
AS SEEN ON TV! Never Repay! Gov't Grants for Personal Bills, School, Business. \$47 billion left unclaimed. Live Operators! 1-800-574-1804 ext. 209

SSCASH NOWSS
AS SEEN ON TV! Never Repay



**WELCOME TO
THE AGE OF
INDEPENDENCE®**

**Introducing our new
“Just Because,
Not a Grand Opening,
Not a Holiday” special
Edison offers.**



Independence
Community Bank®

New Independence RewardsPlus Checking.™

Get 5000 automatic Bonus Points from Visa® Extras
when you sign up today.*

Unlimited check writing.

First order of checks free.

3.05%
APY

with a balance of \$15,000 and over,**
Plus many other free services included.

Free Business Checking For Life***

Open an account today and never pay to
write a check again.

FREE first order of checks

FREE Independence VISA® Business CheckCard

FREE online banking

NO monthly maintenance fees

NO deposit charges

Limited time offer

Home Equity Loan

No fees, points, closing costs or appraisal fees.†

Tax-deductible interest.††

HOME EQUITY LOAN

5.25%
APR†††
15 YEAR FIXED RATE

get a \$100 gift card
for the Home Depot®†††
when you close on
your loan

Home Equity Line

No fees, points, closing costs or appraisal fees.†

Tax-deductible interest.††

HOME EQUITY LINE

3.74%
APR[§]
FIXED FOR 6 MONTHS

13 Month CD

Your money will work harder with this great rate.

3.56%
APY^{§§}
13 MONTH CD

Stop in our new Edison branch, or call **732-287-0648.**

These offers available only at our Edison Branch, 3876 Route 27, Edison, NJ, from 4/10/05 through 5/31/05, excluding Free Business Checking For Life. *Bonus rewards points will be issued upon the opening of an Independence RewardsPlus Checking® account, retaining an Independence Visa First Visa-Card and opening a new First Independence Community Bank account. **You must deposit a minimum of \$100 to open this account. This is a variable rate account—the Bonus Plus interest rate and Annual Percentage Rate (APR) may change at any time. Annual Percentage Rate (APR) is 3.05% (APR) applied on accounts with a minimum balance of \$15,000 and greater. Accounts with a balance of \$5,000 to \$14,999.99 will earn 1.00% APY. Accounts with less than \$5,000 do not earn interest. \$15.00 service fee will be assessed if the average daily balance for the month falls below \$5,000. Other fees and services charges may apply. Funds may be withdrawn from the account. ***Offer expires 6/30/05. New accounts must be opened by 6/30/05, and will be considered a "Free Small Business Checking Account" as long as the account is open, active and in good standing. This offer applies to small business checking accounts only. Personal accounts are not eligible. Rewards Plus Checking accounts do not qualify. Other restrictions may apply. Offer may be withdrawn at any time. Free check offer applies to Intepack. †Hazard insurance required and first advance may be required. Minimum loan size is \$25,000. Maximum loan size is \$200,000. This offer is applicable only to qualifying and family owned companies that have been established for at least 1 year. ††Tax-deductible interest. †††Offer subject to credit and property approval. The amount we can lend you depends on the value of your home, your income, amount of debt and credit history. This offer is not available for the refinancing of existing Independence Home Equity Loans or Home Equity Lines of Credit. Closing costs and recording fees apply to your loan. Independence Community Bank representative for additional important details, limitations or alternative options. Offer subject to change or withdrawal at any time without prior notice. †††Consult your tax advisor regarding the deductibility of interest and potential tax savings. 131 APR (Annual Percentage Rate) Independence Home Equity Line is for a 15-year fixed-rate home equity loan with automatic payment from an Independence Checking Account. For a 15-year loan, the monthly payment is \$6.74 per \$1,000 borrowed. Rates are variable as of 4/1/05 and are subject to change. Additional terms available. Independence Community Bank is not affiliated with The Home Depot. The Home Depot® is a registered trademark of Home Depot, Inc. Applications must be received by 5/31/05 and subsequently approved and closed—available only for Home Equity loans. Loan \$100,000.00 to The Home Depot® will be applied to your loan and close on your loan. After 30 days from the date of closing to receive your \$100 gift card. See the Home Depot® Rate. The introductory rate of 3.74% is fixed for six (6) complete billing cycles and is not based on any index. This rate requires automatic payment from an Independence Checking account and a \$25.00 value draw or transfer of funds at account opening. After the first six (6) billing cycles, the APR is variable monthly, and based on the Prime Rate plus 1.00% and may reduce the earnings on the account. The rate is effective as of 4/10/05 and is subject to change.